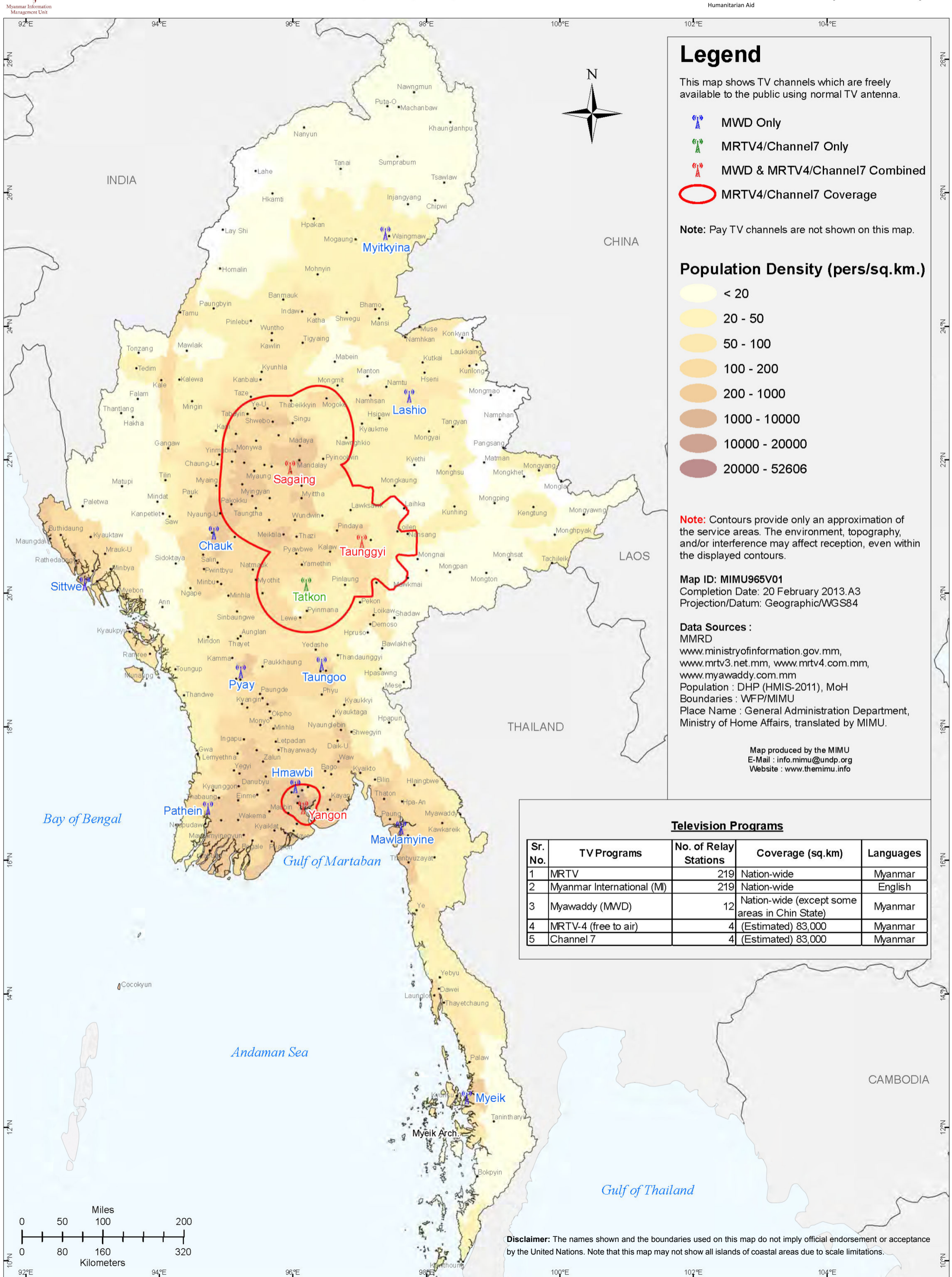




Coverage of Myanmar Free-to-air Television Media

(February 2013)



Legend

This map shows TV channels which are freely available to the public using normal TV antenna.

- MWD Only
- MRTV4/Channel7 Only
- MWD & MRTV4/Channel7 Combined
- MRTV4/Channel7 Coverage

Note: Pay TV channels are not shown on this map.

Population Density (pers/sq.km.)

- < 20
- 20 - 50
- 50 - 100
- 100 - 200
- 200 - 1000
- 1000 - 10000
- 10000 - 20000
- 20000 - 52606

Note: Contours provide only an approximation of the service areas. The environment, topography, and/or interference may affect reception, even within the displayed contours.

Map ID: MIMU965V01
Completion Date: 20 February 2013.A3
Projection/Datum: Geographic/WGS84

Data Sources :
MMRD
www.ministryofinformation.gov.mm,
www.mrtv3.net.mm, www.mrtv4.com.mm,
www.myawaddy.com.mm
Population : DHP (HMIS-2011), MoH
Boundaries : WFP/MIMU
Place Name : General Administration Department,
Ministry of Home Affairs, translated by MIMU.

Map produced by the MIMU
E-Mail : info.mimu@undp.org
Website : www.themimu.info

Television Programs

Sr. No.	TV Programs	No. of Relay Stations	Coverage (sq.km)	Languages
1	MRTV	219	Nation-wide	Myanmar
2	Myanmar International (MI)	219	Nation-wide	English
3	Myawaddy (MWD)	12	Nation-wide (except some areas in Chin State)	Myanmar
4	MRTV-4 (free to air)	4	(Estimated) 83,000	Myanmar
5	Channel 7	4	(Estimated) 83,000	Myanmar

Disclaimer: The names shown and the boundaries used on this map do not imply official endorsement or acceptance by the United Nations. Note that this map may not show all islands of coastal areas due to scale limitations.