

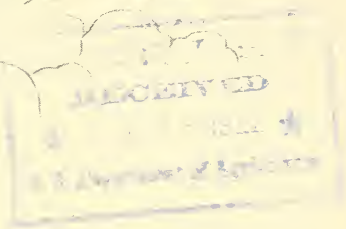
## **Historic, Archive Document**

Do not assume content reflects current scientific knowledge, policies, or practices.



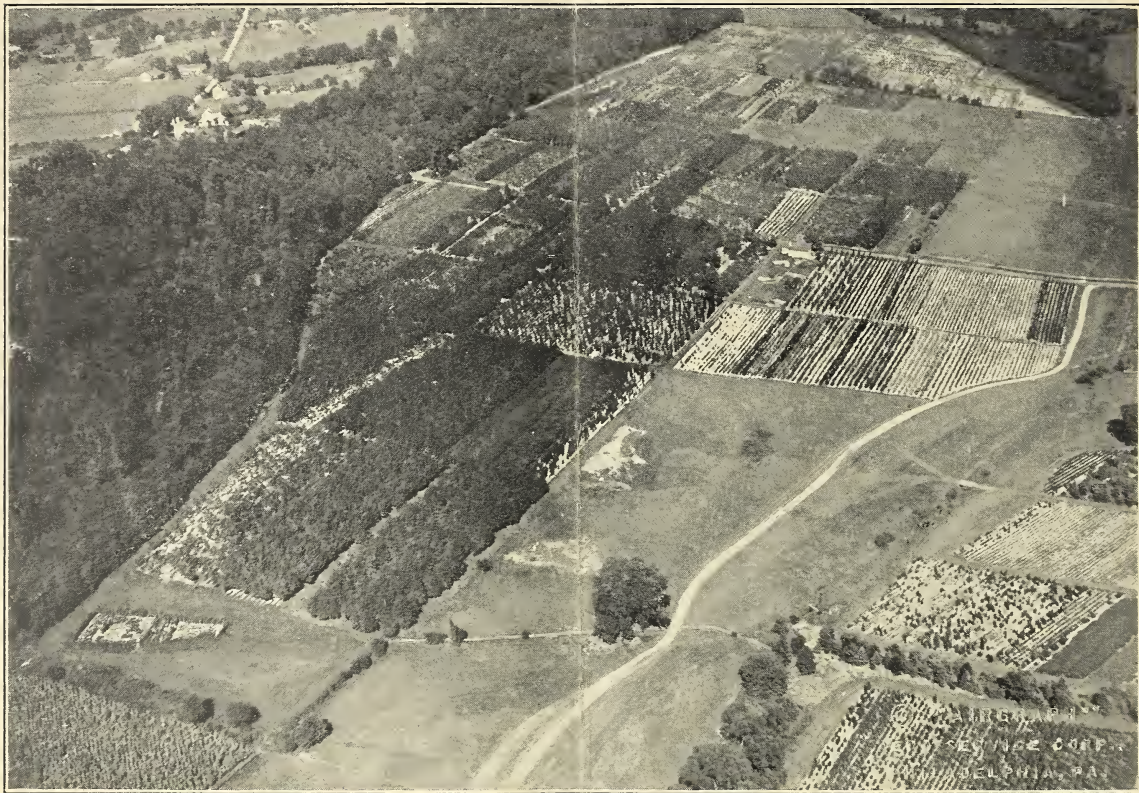
6273

1934



*Andorra  
Nurseries  
from the  
Clouds*

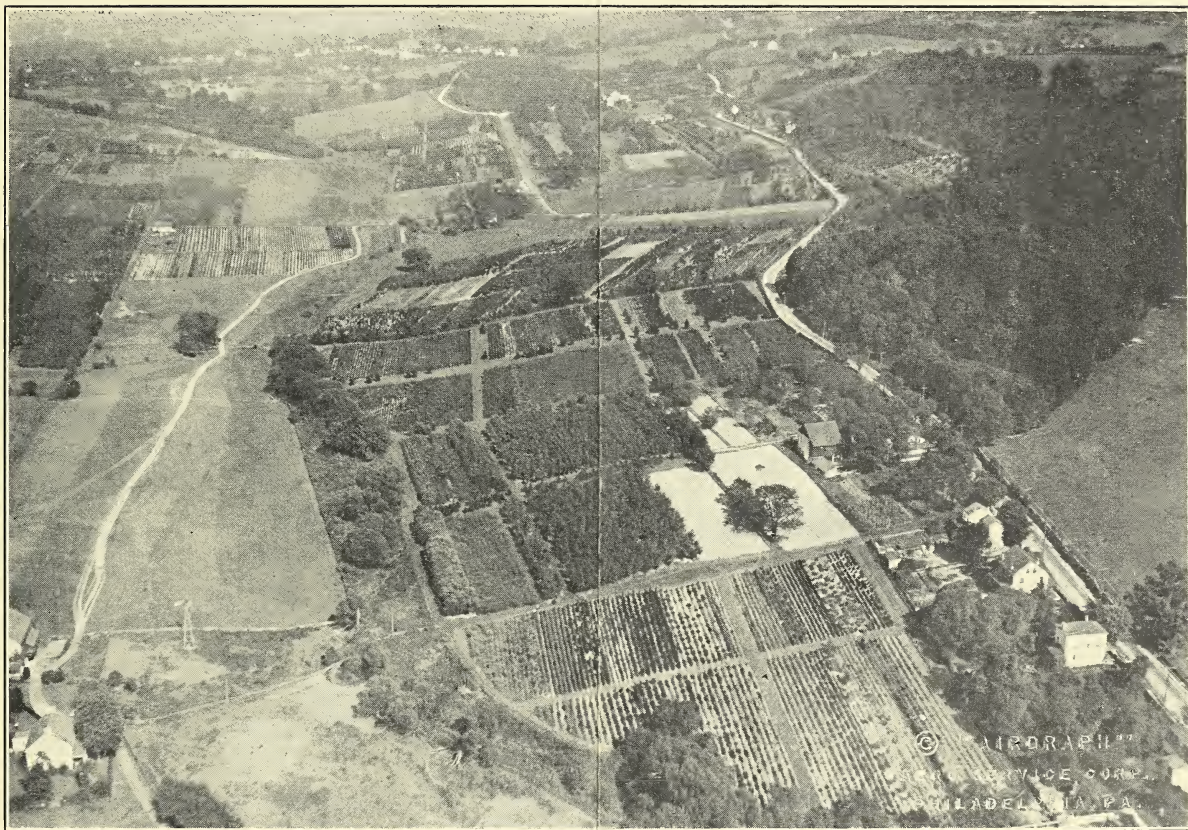




*ANDORRA NURSERIES, SPRING MILL VALLEY SECTION, NORTH*

View extending up the Spring Mill Valley, east from the Schuylkill River. It was down this valley that the Colonial Army under the Marquis Lafayette moved September 14, 1777, crossing the river at Spring Mill, after skirmishes with the British under General Howe at Barren Hill, preparatory to encampment at Valley Forge.

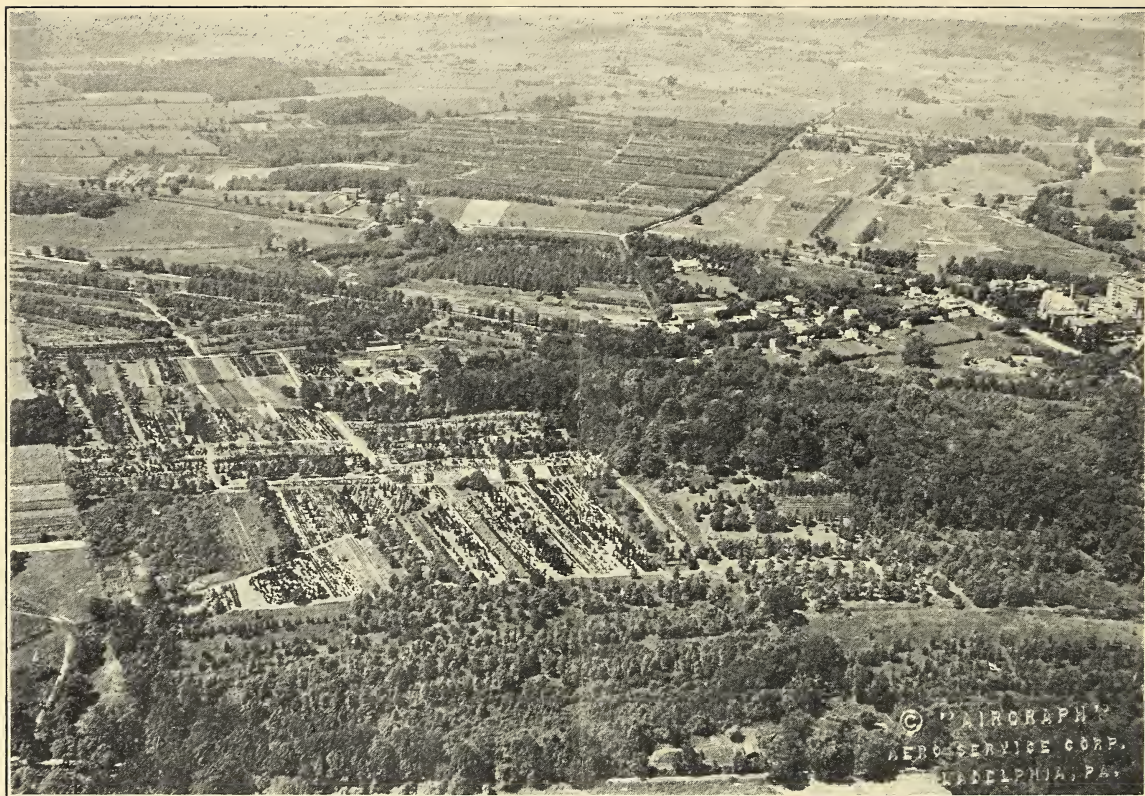




*ANDORRA NURSERIES, SPRING MILL VALLEY SECTION, SOUTH*

The Spring Mill Section is located on the Ridge Road, the direct highway between Philadelphia and Reading, and can be reached from the Main Line residential section of Philadelphia over the newly completed bridge at Conshohocken, or from Germantown and Chestnut Hill, via Stenton Avenue and West on City Line to the Wissahickon Drive.





ANDORRA AND WHITEMARSH SECTIONS, ANDORRA NURSERIES (Established 1886)

Fourteen miles from the center of Philadelphia, in the Whitemarsh and Spring Mill Valleys and stretching from the northern entrance of the Wissahickon Drive west to the Schuylkill River at Spring Mill, extend the eleven hundred acres of the Andorra Nurseries.



Office and Entrance to Andorra

## AN INVITATION TO ANDORRA

THOSE who are interested in landscape art and the beauty of trees and plants out-of-doors are always cordially welcome at Andorra. Excellent highways through this beautiful rolling section of Pennsylvania, with its charm of Colonial manor house and country-place, offer inviting roads from every direction to visitors in motor cars. From Philadelphia by the River Drive (Fairmount Park) continuing up the Wissahickon Drive and Lincoln Drive to Chestnut Hill, thence by Stenton Avenue to City Line, turning left to Andorra.

Train connections over the Chestnut Hill branches of both the Pennsylvania and Reading railroads make Andorra a two-hour run out of New York and a half-hour from the heart of Philadelphia; from Chestnut Hill stations a ten-minute ride on the City Line trolley cars brings one to the gates of the Nurseries.

Situated at the northern entrance of the far-famed Wissahickon Drive through Fairmount Park to Philadelphia, Andorra Nurseries are located in a rolling country offering a great variety of soils and exposures; with this great advantage of soils is coupled a range of temperature from the 20-below zero days of the winter of 1917 to the hot, dry summers of this latitude, so that Hardy Trees, Evergreens and Shrubs, grown at Andorra, assure their success in every part of this country of varied climatic conditions to which their habit of growth fits them.





Sweet Magnolia (*Magnolia glauca*)

## The Sweet Magnolia

**A** BEAUTIFUL, small, shrubby tree, thriving in any good soil or situation and useful for positions too damp for many trees. The rich, glossy green foliage is glaucous beneath, giving the whole a silvery sheen. The cream-white, waxlike flowers are highly fragrant and the seed-pods which follow open to show brilliant coral seeds.

Used in masses with Evergreens, in the shrub border, as hedges or for specimens it gives added pleasure in any planting.

### Recently Transplanted Stock

	Each	10	100
2 to 3 ft.....	\$2 50	\$20 00	\$160 00
3 to 4 ft.....	3 00	25 00	200 00
4 to 5 ft. with ball of soil.	4 00	30 00	
5 to 6 ft. with ball of soil.	5 00	40 00	
6 to 7 ft. with ball of soil.	6 50		

## ANDORRA NURSERIES

WM. WARNER HARPER, Prop.

Chestnut Hill, Philadelphia, Pa.