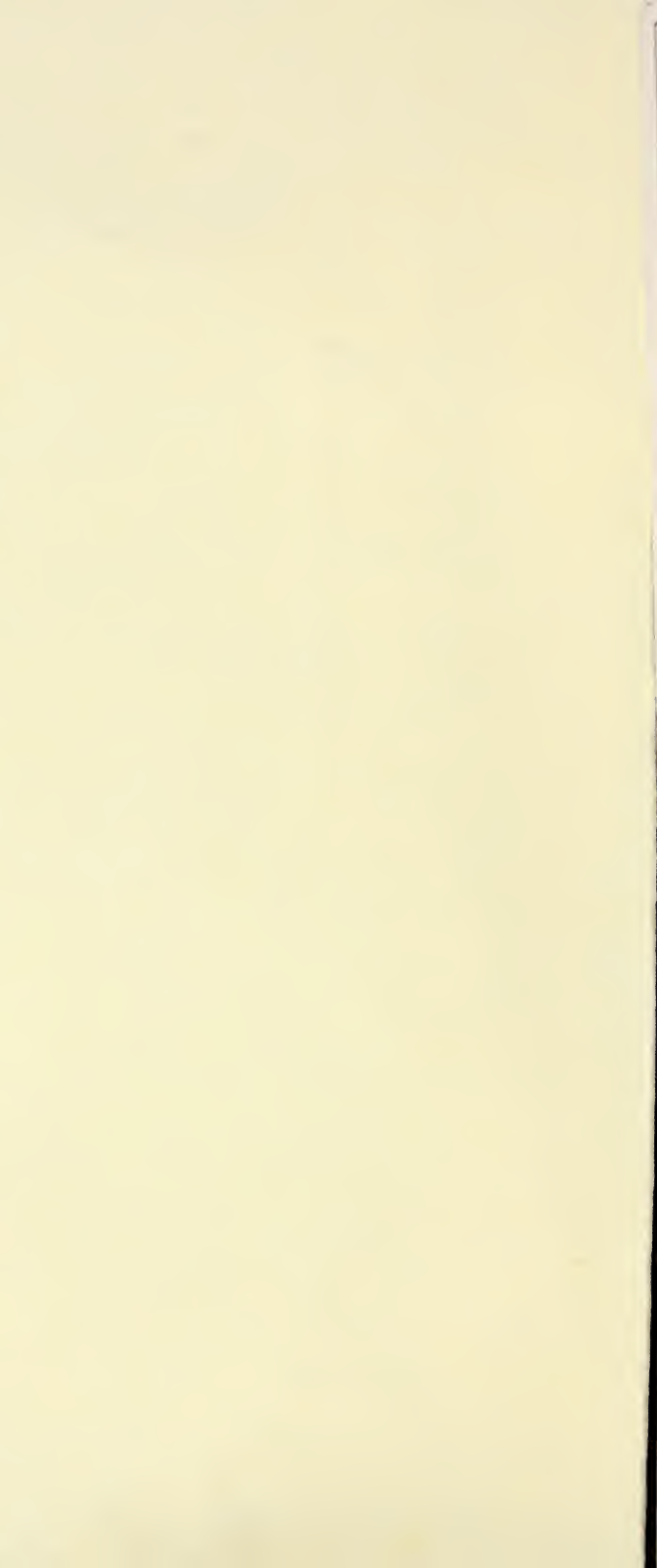


Historic, archived document

Do not assume content reflects current scientific knowledge, policies, or practices.



62,25 RECEIVED
LIBRARY
JAN 20 1926

BARGAINS

IN
QUALITY

FRUIT TREES
BERRY PLANTS
GRAPE VINES
EVERGREENS
HARDY SHRUBS
FIELD GROWN ROSES
PERENNIALS



Hardy Northern Grown, True to
Name

NURSERY STOCK

Spring of 1926

THE KRIDER NURSERIES INC.

Middlebury, Indiana

Plant Your Trees and Shrubs This Fall and
Save a Year

FOREWORD

We take pleasure in sending you our Spring bargains of Hardy Northern Grown, True to Name, fruits and shrubs. Never before were we able to offer you such quality stock. Never before were we able to give you such low prices.

Quality is Krider's first aim as always. Big, hardy plants, Northern grown, vigorous, sure to grow, and sure to bear.

Prices. We have cut to the limit to meet the prices of farm products. Every farmer needs an orchard, a berry patch and a vineyard. Now, here he can get it. No excuse to wait longer. Never again will prices be lower. Perhaps never as low on such quality stock. Suppose you had set five years ago. What fruit you might have now. How beautiful your shrubbery would be.

LOCATION

Middlebury is in the extreme North of Indiana. Season long enough to produce big plants. Cool enough to produce hardy vigorous stock.

DELIVERY

We prepay all mail and express charges on orders over \$10.00.

FALL PLANTING

A number of our customers have written us that they have found fall setting more satisfactory than spring. We have found it at least fully as satisfactory since the dirt gets full packed around the roots in the winter. Then when warm days come the roots start first, furnishing nourishment to the trees when the leaves put forth.

GUARANTEE

We exercise the greatest care to avoid errors but in the rush of the packing season one will creep in occasionally. Should such occur it is expressly agreed between our customer and us that we will replace original order or refund the purchase price. Except for such liability and in respect to all nursery stock sold by us we give no warranty express or implied as to descriptions, quality, growth, productiveness or any other matter.

EARLY ORDERS

Owing to the disappointment caused many of our customers each year from the fact that we are sold out before their orders are filled we here wish to state clearly that orders are filled in rotation. Any other method would be unfair, you can see. So to avoid disappointment to you and regret to us it is wise to order early.

For all fall orders received before Oct. 1st or spring orders before March 15th we offer a rambler rose as a premium.

KRIDER NURSERY CO.

INDEX

	Page		Page
Althea	18	Juniperus	38
Aquilegia	32	Jonquils	32
Apples	3-4	Larkspur	32
Apricot	8	Landscape Dept.	15
Arbor Vitae	38	Mulberry	17
Asparagus	9	Narcissus, Paper White..	32
Asters	32	Peonies	29-30
Bleeding Heart	32	Plums	7
Blackberres	11	Privet	26
Boston Ivy	27	Pears	7
Clematis	28	Pines	39
Cherries	6-7	Phlox, hardy	33
Currants	9	Philadelphus	22
Crab, Double Flowering	19	Peaches	5-6
Crocus	31	Quince	8
Coreopsis	32	Raspberries	12-13
Dahlias	32	Rhus, Sumac	23
Deutzia	20	Retinispora	39
Dutchman's Pipe Vine..	27	Roses	33-35
Evergreens	37-39	Roses, Climbing	36-37
Elm	17	Ramblers	35-36
Foreword	2	Hybrid Perpetual	34
Flower Plants	32-33	Spirea, 12 varieties.....	24
General Information.....	2	Shade Trees	16-17
Gooseberries	8	Shrubs, Hardy	18-25
Grapes	10	Spruces	39
Gladiola	33	Snowballs	25
Hollyhocks	33	Tamarix	24
Hedge, Ornamental.....	26	Trumpet Vine	27
Hibiscus	33	Tulips	30-31
Honeysuckle	28	Tulips, Darwin	31
Hyacinths	31	Vines	27-28
Hydrangea	21	Wisteria	28
Iris	33	Weigela	20
		Xanthorrhiza	25



Wealthy

APPLES

Apples should be planted in early Spring or late Fall. We recommend April and May for Spring planting; October and November for Fall planting throughout Indiana. The varieties we are offering cover the season from early to late. All of the varieties have been tested and we know that they will prove satisfactory.

Almost any soil will suit the trees; however, best results will be obtained by planting in a rich, loamy soil. Clean cultivation, careful pruning and spraying will pay big dividends. Trees should be planted thirty-five feet apart each way, and for the first year or two the trunks of the trees should be protected from rabbits.

NOTE. We propagate our Apples from scions cut from trees that are bearing fruit. Many nurseries use scions from the nursery rows and trees raised in this manner will not bear fruit until very old. Be sure you get trees that have bearing wood grafted on them.

Apples are going to be valuable in the near future, they bring a handsome price now and when the old orchards are gone they will nearly double the price received now and a good Apple orchard will be more valuable than an orange grove. True, some of us will not live to reap the benefits, but our children can not have a greater inheritance than a thrifty, bearing orchard, which will guarantee them a fine income annually.

We grow forty varieties of Apple, each one having certain characteristics which render them valuable. Those marked with an asterisk (*) are such as are most valuable in Indiana.

We can furnish Dwarf Apples at the same price as standard.

Price of Apples and Crab Apples	Each	10	100
No. 1, 3 yr., 5 to 7 ft.-----	\$0.75	\$7.00	\$60.00
No. 1, 2 yr., 4 to 6 ft. -----	.60	5.00	40.00
No. 1, 3 yr., 3 to 4 ft. -----	.50	4.00	30.00

We can furnish the following varieties:

SUMMER

Benoni, *Early Harvest, Golden Sweet, *Liveland, *Red Astrachan, *Red June, *Yellow Transparent.

AUTUMN

Chenango Strawberry, *Duchess, *Fameuse (Snow), Fall Pippin, *Maiden Blush, *Wealthy.

WINTER

*Black Ben, Ben Davis, *Yellow Belleflower, *Baldwin, *Delicious, *Grimes Golden, Gano, Golden Russett, Hubbardson, *Jonathan, King, *Mammoth Black Twig, *McIntosh Red, *Northern Spy, Northwestern Greening, Pewaukee, Rambo, Rome Beauty, Rhode Island Greening, Spitzenburg, Stark, Stayman, Tolman Sweet, Wagner, Wolf River, Winter Banana, York Imperial, Hyslop Crab Apple, Siberian Crab Apple.

MODEL APPLE ORCHARDS

Many customers ask us what to plant. For those who want an apple orchard for home use we can recommend the following for we know they can be depended on. They are staples and old standbys.

EARLY SUMMER

Yellow Transparent—July, smooth, yellow, eating and cooking. Bears young -----	4
Early Harvest—August, yellow, smooth, fine flavor. Excellent for cooking-----	4

AUTUMN

Maiden Blush—September, yellow, red cheek. Fine for pies	4
Wealthy—September, red striped. Good bearer. Very fine	4
Snow—October, medium size, juicy, red striped. Good eating	4

WINTER

Delicious—Red, large, good eating. Keeps until April----	8
Grimes Golden—Yellow, fine flavor, good market apple. Keeps until January-----	8
Winter Banana—Yellow with red cheek. Fine for dessert. Keeps until February-----	8
Jonathan—Red, medium size, fine flavor. Keeps until March	8
Northern Spy—Green, mottled, best cooker. Keeps until February-----	8
Northwestern Greening—Green, large. Keeps until March	8
Stayman Winesap—Red, good yielder, good for market. Keeps until April-----	8
Baldwin—Red, fine eating and market. Keeps until March	8
Winter Rambo—Good eating, good yielder. Keeps until February-----	8
Talman Sweet—Sweet, excellent for apple butter. Keeps until March-----	8

Total Trees-----100

Total 100 trees, Regular Price \$60.00, Special Price--\$50.00
 This will set an orchard of nearly two acres. 32 feet between trees.

SMALLER ORCHARDS

	3 yr.	2 yr.	1 yr.
50 trees of above varieties -----	\$26.00	\$18.00	\$14.00
25 trees of above varieties -----	14.00	10.00	8.00

Any other varieties may be substituted but 25 trees or multiples of 25 must be taken.

WHY NOT BUY MORE FRUIT TREES?

How many dollars a year do you spend for fruit—either fresh or in cans?

Did you ever stop to think that one-tenth that sum invested in a few trees, would give you many times the amount of fruit you buy—and keep on giving it to you, year after year?

If you have ground enough for a fair-sized garden, you have room enough for fruit. A single tree will yield from 50 to 150 quarts of fruit. We have seen 20 16-quart baskets taken from a single tree, under regular commercial culture. A good young apple tree will give from two to four barrels of fruit.

Fruit trees require so little care, as compared to vegetables, that your whole home orchard will not take many hours work during the entire year.

You can grow as fine peaches and apples as sold anywhere.



PEACHES

The Peach holds a place second only to the apple in the United States. It ripens over a long period and with proper selection of varieties a succession of fruit may be had throughout the Summer and early Fall. In a general way it may be said that the standard varieties of Peaches have a wider range of adaptability than the majority of apples and thrive on thinner soils; for example: Elberta is the leading variety in all the peach growing sections of the country—but no single variety of apple tree occupies the same position in its class as does Elberta. This fact is ample proof of the adaptability of the Peach.

Paradichlorobenzine. A sure cure for the peach borer. This remedy can be purchased from your druggist. If applied in September the following directions should be followed.

Remove the dirt from about the trees in a circle of 12-inch radius, apply paradichlorobenzine in a circle about 4



J. H. Hale

inches from tree using a tablespoonful to a 5-year old tree, cover by mounding the dirt about the tree. The gas resulting from this preparation is a sure cure for the borer and will prolong the life of a peach tree 5' years.

Price of Peach Trees	Each	10	100
No. 1, 4-6 ft. -----	.55	\$5.00	\$40.00
No. 2, 3-4 ft -----	.40	3.50	25.00
No. 3, 2-3 ft. -----	.25	2.20	20.00

KRIDER'S LATEST JAPAN DREAM

This is the earliest free stone Peach grown in Indiana. Very sweet, tender and excellent flavor; ripens before Champion. Brought to Northern Indiana by Mr. D. A. Davis. We only have a limited number and offer them at 75c each; 5 for \$3.50.

Not more than 5 to a customer.

We can furnish the following varieties of peach trees:

Alexander, Admiral Dewey, Bell of Georgia, Chinese Cling, Captain Ede, Champion, Carmon, Crosby, Late Crawford, Early Crawford, Fitzgerald, Elberta, J. H. Hale, Old Mixon, Triumph, Kalamazoo, Engels Mammoth, Matthews Beauty, Salway, Gold Drop.

EXTRA SPECIAL FOR MODEL ORCHARD

On all orders received before Oct. 15 we will allow you to substitute five Japan Dream for any five single variety in model orchard on page 6. Only five to one customer.

MODEL ORCHARD OF 25 PEACH TREES

When planting an apple orchard peaches should be set between the rows for fillers. It does not cost any more to raise them in care and cultivation and one crop of peaches will pay for the land. We recommend the following selection:

- 5 **Champion**—White, best flavor of any peach grown, good size, free stone. Ripens in August.
- 5 **Early Crawford**—Yellow, early peach, good quality, free stone. Ripens September 1st.
- 5 **Elberta**—September 20, free stone, large and very productive. One of the best market sorts.
- 5 **Gold Drop**—September 20, best canning peach grown. Flavor delicious.
- 5 **Salway**—Free stone, October 10. Large as Elberta, excellent canning peach.

Above 25 trees (No substitutions allowed):

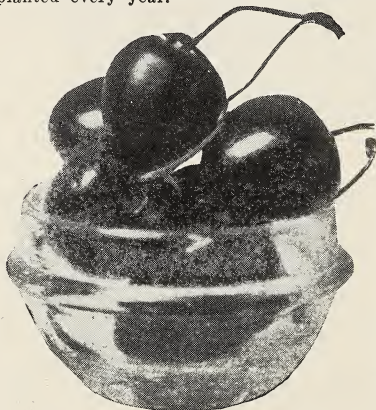
No. 1, 4-6 ft. -----	\$9.00
3-4 ft. -----	5.00
2-3 ft. -----	4.00



CHERRIES

Not a case of can you afford them, but a case of you cannot afford to be without them.

How the birds and children love Cherry time! And where is the man who doesn't relish a big juicy Cherry pie? Truly one of the most popular and healthful of all fruits, how easily the cherry has come to the front and is being more widely planted every year.



Bing

The tree alone is ornamental, and can be planted without hesitation as a lawn tree—it is as much of a home tree as an orchard tree. For commercial purposes there are few orchards quite as profitable as a Cherry orchard, because there is perhaps, no fruit always so much in demand and always bringing good prices.

Easy to plant, it will thrive on any kind of soil but a wet one, and they are infected with fewer diseases and insects than any other fruit trees. The San Jose scale

never bothers cherry trees.

Our trees are hardy, vigorous and frost-resistant, easily grown wherever the apple succeeds, and are late bloomers. Few fruit trees will bear such an abundant amount of luscious fruit year after year with as little attention and expense.

Price of cherry trees	Each	10	100
First Class, 5 to 7 ft. $\frac{3}{4}$ to 1 inch----	1.25	10.00	90.00
Second Class, 4 to 6 ft. $\frac{1}{2}$ to $\frac{5}{8}$ inch--	1.00	8.50	80.00
Third Class, 3 to 4 ft. $\frac{3}{8}$ to $\frac{1}{2}$ inch--	.75	6.50	55.00

SWEET VARIETIES

BING—This grand new black Cherry was originated by Seth Luelling of Milwaukee, Ore. Almost as large again as the Black Republican; flesh very solid, flavor of the highest quality; tree thrifty, upright grower, very hardy and productive; a fine shipping and market variety. First of July.

BLACK TARTARIAN—Very large, bright, glossy black; half tender, juicy rich and fine. Tree a rapid grower and good bearer. Last of June and first of July.

GOVERNOR WOOD—Large; light yellow and bright red; nearly tender, juicy, sweet, rich and delicious. Tree vigorous and productive. Middle to last of June.

WINDSOR—The fruit is large, flesh remarkably firm, sweet and of fine quality. Tree hardy and prolific July 1st Best late Sweet Cherry grown.

DUKE AND MORELLO (Sour) CHERRIES

DYEHOUSE—This variety partakes both of the Morello and Duke wood and fruit. A very early and sure bearer; ripens a week before Early Richmond, is of better quality and productive. Free. May and June.

EARLY RICHMOND—Everywhere the most popular. Tree strong, thrifty grower, making a large symmetrical head; fruit medium size, dark red, melting, juicy; sprightly acid flavor and especially valuable for cooking purposes; tree an early and abundant bearer. Season last of May and first of June.

LARGE MONTMORENCY—A fine, large, light red cherry of the Richmond class, but larger and more upright grower. Equally hardy and productive. Second only to Early Richmond in value. Ripens ten days later.

For home use we recommend as follows:

Sweet—1 Bing, 1 Windsor. Sour—2 Early Richmond, 2 Montmorency.

	Regular price	Our special
Total 6 Trees all No. 1, 5-7 ft. -----	7.50	6.00
6 Trees all No. 2, 4-6 ft. -----	6.00	4.90

PLUMS

Plums are an addition to any home orchard. Easy to grow and almost sure bearers. Why not have a few in your orchard. Variety? Big blue, red, yellow and purple.

Our plums all propagated from bearing stock. This is essential to secure trees that will bear fruit.

Price of plum trees	Each	10	100
No. 1, 5-7 ft -----	1.50	12.50	100.00
No. 1, 4-5 ft. -----	1.00	9.00	80.00

We have a large stock of Lombard, Damson, Bradshaw, Burbank, Abundance, Red June, and Green Gage.

SPECIAL

For home use we recommend the following:

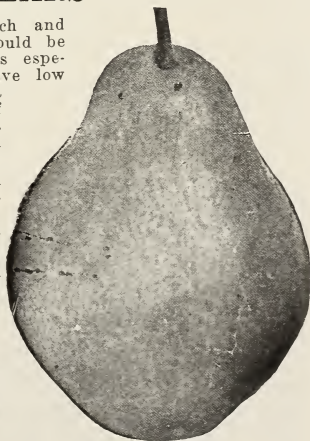
- 2 Abundance No. 1, 5-7 ft.
- 2 Burbank No. 1, 5-7 ft.
- 2 Monarch No. 1, 5-7 ft.

	Reg. price	Our special
6 trees all No. 1, 5-7 ft. -----	9.00	6.25
6 trees all No. 1, 3-4 ft. -----	6.00	4.90

PEARS

The soil should be rich and well cultivated. They should be pruned every year, dwarfs especially. Dwarfs should have low heads and be trained in a pyramidal form, one-half of the previous season's growth being cut off each Spring.

Pears succeed best on rather steep hillsides. Plant Pears midway on the slope, putting something else on the upper and lower sections. Cultivate sparingly, so as to induce very slow growth, and let blue grass take the land before the trees come into fruitage. When blight appears cut off the affected parts at once and burn them; cut six inches below the lowest blight, to insure taking all infected sap.



Price of pear trees	Each	10	100
Select, 5-7 ft. -----	1.50	12.50	100.00
Select, 4-5 ft. -----	1.25	10.00	80.00

BARTLETT—Large yellow pear; fine flavor. Very popular.

CLAPP'S FAVORITE—Light yellow with brown dots; fruit large, good flavor.

PEARS—Continued

DUCHESS—One of the largest and best. Greenish yellow with russet spots.

KIEFFER—This is the well known canning Pear, hardy, prolific; fruit large and yellow in color with touches of carmine.

SECKEL—A small variety but of excellent quality. Very productive.

FLEMISH BEAUTY—Sweet, very productive, excellent for canning.

For home use we recommend the following:

- 2 Bartlett No. 1, 5 to 7 ft.
- 2 Duchess No. 1, 5 to 7 ft.
- 2 Flemish Beauty No. 1, 5 to 7 ft.

Total 6 trees all No. 1, 5 to 7 ft.	Reg. price	Our special
	9.00	7.50

APRICOT TREES

Ripening as it does between Cherries and Peaches, usually about the month before the early peaches, the Apricot is a most welcome fruit, both tempting and delicious. No garden should be without a few trees. In addition to its value as fresh fruit it is a superior fruit for canning and drying, vast quantities being used for these purposes every year. There is always a market for Apricots at good prices, and the planter need have no fear of over production.

Prices of all varieties of Apricot trees	Each	10
Largest size 2 yr. 4 to 5 ft.	1.50	12.50
Medium size 2 yr. 3 to 4 ft.	1.25	10.00

Our stock of the following is especially fine: Moorepark, Early Golden, Superb, Royal, Alexander.

QUINCE

Prices	Each	10
No. 1, 4 to 6 ft.	1.50	12.50
No. 1, 3 to 4 ft.	1.20	10.00

Champion is largest of all, yellow orange, round, very good.

Quince Honey? Yum! Why not, when the cost is so little at Kriders?

SPECIAL BARGAIN FOR CITY LOT

or new home. The following is an ideal planting.

1 Yellow Transparent Apple, No. 1, 5-7 ft.	.75
1 Delicious Apple, No. 1, 5-7 ft.	.75
1 Montmorency Sour Cherry, No. 1, 5-6 ft.	1.50
1 Windsor Sweet Cherry, No. 1, 5-6 ft.	1.50
1 Bartlett Pear, No. 1, 4-6 ft.	1.25
1 Burbank Plum No. 1, 4-6 ft.	1.25
1 Elberta Peach, No. 1, 4-6 ft.	.55
1 Gold Drop Peach, No. 1, 4-6 ft.	.55
1 Crimson Rambler Rose	.50

Total ----- 8.60

Special Price \$7.25.

GOOSEBERRIES

CHAUTAUQUA—Light yellow, largest size. 1 to 1½ inch in diameter; very sweet and delicious. 50c each.

DOWNING—The Business Gooseberry. Pale green; juicy, sprightly and sweet. Strong grower, very productive. 35c each, \$25.00 per 100.

HOUGHTON—The best of the American sorts, as large as the largest English variety. Strong, vigorous grower, hardy, wonderful cropper.

Berry, rich, juicy, highest quality.
35c each,
\$3.00 per dozen.



NOTE — If by parcel post add 2 cents per plant.

Downing Gooseberry

CURRENTS

The Currant is an indispensable garden fruit. It is very largely planted all over the North, and owing to its early



ripening season it is grown successfully as a commercial fruit in all sections. An acre of Currants properly cared for will produce from one thousand to twelve hundred dollars worth of fruit annually. Currants are more easily handled than other small fruits, as they hang on the bushes from ten days to two weeks after they become ripe, without injury.

Price of Currants	Large first-class bushes		
	Each	dozen	100
Perfection -----	.35	3.75	20.00
Boskoop Giant and Red Cross -----	.25	2.75	15.00
Filler and Diploma -----	.25	2.75	15.00
London Market and Fay's Prolific ---	.25	2.75	15.00
Black Naples and Wilder -----	.25	2.75	15.00
White Imperial and Cherry -----	.25	2.75	15.00

We will furnish 6 at dozen, 50 at 100, and 500 at 1000 rates.

All our currants have the same mass of fibrous roots that our fruit trees have.

RHUBARB

VICTORIA—The old standard variety, large stalks; medium season. Per dozen \$1.00; per 100 \$5.00.

LINNEAUS—One of the leading varieties grown here. Stalks not as large as Victoria, but earlier. Per dozen \$1.00; per 100 \$5.00.

NOTE—For many years an old market gardener near Bristol had the early trade of Elkhart on pie plant, he had the largest, earliest and the best flavored pie plant that came to the city. Pies made from it had the flavor of peaches and it was called peach flavored. Since his death we have succeeded in obtaining the entire stock and have at this time 10,000 stalks. We are offering this to our customers at the same price as the common kind, \$1.00 per dozen, \$5.00 per 100. Be sure and send for a dozen of this variety in your order. We call it "Miller's Cream" and will give \$25.00 for a dozen stalks that will excell it in size, season and quality.

ASPARAGUS

The first garden vegetable of Spring; it is a great delicacy and comes in just when it is most needed. One hundred roots will supply a small family and will last for years. Set the plants about eighteen inches apart in the row. Spread the roots out in the bottom of the hole or furrow and gradually fill in as the plant grows, so that the roots will be about four inches deep.

Two years old	Doz.	100	1000
Buckbee's Perfection -----	.50	1.25	7.00
Bonvalet's Giant -----	.40	1.00	6.00
Early French Giant Argenteuil-----	.40	1.00	6.00
Improved Palmetto -----	.40	1.00	6.00
Columbian Mammoth White -----	.40	1.00	6.00
Conover's Colossal -----	.40	1.00	6.00

GRAPES

Why not set a vineyard this Spring? No fruit yields greater returns on the investment than Grapes. Prices the past year have been from 5 to 6 cents per pound and returns have been as high as \$600.00 per acre. Give that boy a chance. Set 8 feet apart in rows 10 to 14 feet wide. About 600 vines will set an acre. We grow ten varieties of Grapes, but only four are profitable market sorts.

Price, No. 1 vines, each 20c, per dozen \$2.00, per 100 \$15.00. All vines heavy, two years old.

BLACK VARIETIES

CAMPBELL'S EARLY—

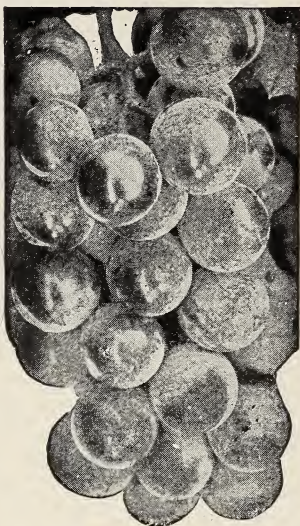
A new, very large and fine early black grape. Strong, vigorous, hardy vine with thick, healthy leaves; clusters very large, usually shouldered, compact and handsome; berries large, nearly round, black, rich, sweet, very good; skin thin; seeds few and small, parting easily from the pulp; a good shipper. Ripens very early, but remains sound on the vines for many weeks. This makes it one of the most satisfactory and profitable market sorts to grow.

CHAMPION — Bunches large and compact; berries large, covered with a rich bloom; poor in quality; vine a strong and healthy grower and a good bearer; profitable for market on account of its earliness.

***CONCORD**—One of the most popular and reliable varieties we possess; bunch large, compact and shouldered; berry large, round, almost black with blue bloom, juicy, buttery and very sweet.

MOORE'S EARLY—A large Grape, ripening a week earlier than Concord; good grower; berries large, good quality, and makes a moderate yield; very valuable as an early Grape.

WORDEN—Seedling of the Concord, which it greatly resembles in appearance and flavor, but the berries are larger. The fruit is said to be better flavored and to ripen several days earlier. These qualities will give it the foremost rank among native Grapes.



Moore's Early

RED VARIETIES

***AGAWAM**—Bunch large, shouldered; berry large, reddish brown, tender, vinous and of excellent flavor. Very vigorous and productive. Vine hardy and one of the best of its class.

DELAWARE—The bunches are small, compact, and sometimes shouldered; berries are small with thin but firm skin; flesh juicy, very sweet and refreshing and of the best quality for both table use and for wine. Ripens with Concord or a little before; vine is hardy, productive and a moderate grower.

VERGENNES—Berries large, holding firmly to the stem; light amber, rich and delicious. Is an excellent late keeper.

WHITE VARIETIES

***NIAGARA**—Occupies the same position among the white varieties as Concord among the black. Bunch and berries large, greenish white, changing to pale yellow when fully ripe. Skin thin but tough; quality much like the Concord.

***POCKLINGTON**. Seedling from the Concord. The vine is thoroughly hardy both in wood and foliage; it is a strong grower, never mildews in vine or foliage. The fruit is a light golden yellow, clear, juicy and sweet to the center, with little or no pulp; bunches very large, sometimes shouldered; berries round, very large and thickly set. Ripens with the Concord.

SPECIAL ON CONCORD GRAPES

	Per 100	Per 1000
2-yr., No. 1 -----	\$12.00	\$80.00
1-yr., No. 1 -----	8.00	50.00

SPECIAL VARIETIES

6 GRAPES ALL NO. 1

2 Concord Blue, 1 Moores Early Blue, 1 Agawam Red, 1 Delaware Red, 1 Pocklington.

6 Regular Price \$1.20. Bargain Price ----- \$1.00

12 GRAPES ALL NO. 1

4 Concord, 3 Niagara, 1 Pocklington, 1 Delaware, 3 Agawam. 12 total.

Regular Price \$2.40. Bargain Price ----- \$2.00



BLACKBERRIES

Blackberries do best on good soil, clay and sand mixture preferred, set in rows 6 feet apart and 2 feet in the rows. 3500 are required per acre. Blackberries are in great demand now at 20c per quart. Give the boy a chance to try his mettle by letting him start a patch. He won't have any desire to leave the farm if he is successful in raising fruit. The varieties here given are perfectly hardy and will prove a source of profit. Beware of the Erie, Wilson Jr., Lawton and their like; they will not stand our Winters.

SNYDER—The leading variety here; needs no protection, is rust proof and will stand more neglect than any other variety. In fact it is at its best in sod or shade. Per doz., 75c; per 100, \$3.00; per 1000, \$20.00.

ELDORADO—Largest hardy Blackberry grown. Free from rust and the best money maker here. Berries of the Eldorado bring 50c per crate more than Snyder on the local market. Per doz., 75c; per 100, \$3.00; per 1000, \$20.00.

RASPBERRIES

Loose soils produce the best Raspberries. Partial shade is no hindrance to productiveness, as the natural habitat of the Raspberries is in lower ground, filled with leaf mold and partly shaded. For this reason along higher fences and in between the young orchard trees, Raspberries are likely to thrive. Allow not more than five good canes to develop to the plant, and pinch out the tops of these when they attain a height of 2½ to 3 feet in order to encourage laterals.

Both pink and black Raspberries are sold only in bunches of 25 plants. Less than this number is hardly worth the trial.



BLACK VARIETIES

Per 12, 50c; per 100, \$4.00; per 1000, \$25.00.

CUMBERLAND—Largest black Raspberry known; unusually strong grower, perfectly hardy. The most profitable Raspberry grown.

GREGG—Extra big, enormously productive. Hardy; firm black meaty berries. Late ripening and firm for shipping.

KANSAS—Originated at Lawrence, Kan. Healthy, vigorous grower; early; berry is as large as Gregg and as good a shipper. Very productive and valuable for early market.

QUILLEN—This variety originated a few miles south of Indianapolis and has proven to be more disease proof than other varieties of blackcaps. The largest and most prolific of all blackcap varieties; a cross between Cumberland and Hopkins. Ripens a little later than Cumberland, Kansas and Gregg. We highly recommend this variety. Per doz., \$1.00; per 100, \$5.00.

RED VARIETIES

Per 25, \$1.25; per 100, \$4.00; per 1000, \$25.00.

By parcel post, 15c per 50 additional.

CUTHBERT—Crimson, large, conical, firm and juicy. The canes are upright, strong and vigorous. Hardy. The standard late red market and home variety that is popular and unsurpassed.

KING RED—Bright scarlet, sweet and melting. This early red is the best of its season because of hardiness, productiveness and general good qualities. Ripens two weeks before Cuthbert.

ST. REGIS—The so-called everbearing. It does produce some berries throughout the Summer, and in the Spring is an excellent producer. Quality very good.

COLUMBIAN—The Columbian is a new variety of the Shaffer type, of remarkable vigor and productiveness. Not very hardy and propagates from tips. Fruit very large, often an inch in diameter, shape somewhat conical color dark red bordering on purple; adheres firmly to the stem and will dry on the bush if not picked; seeds small and deeply imbedded in a rich juicy pulp with a distinct flavor of its own. Succeeds wherever red sorts do well and promises to become the leading variety. A most delicious table berry. Per doz., \$1.00; per 100, \$5.00.

RASPBERRIES—Continued

YELLOW VARIETIES

GOLDEN QUEEN—Large, beautiful translucent amber color and exceptionally firm; very productive. The canes are of the strongest growth and quite hardy. Per doz., \$1.00; per 100, \$5.00.

SPECIALS FOR SMALL FAMILY

25 King Raspberries, 25 Quillen Raspberries, 25 Cumberland, 12 Golden Queen. Regular Value \$5.50. Bargain \$4.00.

All No. 1 plants.

NOTE—These will supply berries for table use for a family of five. If your family is smaller we will sell one dozen each King, Quillen, Cumberland, and Golden Queen for \$2.00.



STRAWBERRIES

THE QUALITY OF STRAWBERRY PLANTS

In looking through the many catalogs you receive you will notice that many claim to be the largest growers of plants, and their plants are the best grown. We do not claim to be the largest grower of plants or that they are better than some others, but we have bought plants from some that make such claims in different parts of the country and have never received any better than we send out. In some cases we had to throw away half of the plants as they had the crowns broken or were so small that they were not worth planting. We guarantee the plants we send out to be as large and as fine as you get anywhere (no matter what you pay), and to be put up in as good condition and if grown side by side, under like conditions, that they will produce as much and as good fruit.

PRICES OF STRAWBERRIES
\$1.00 per 100; \$8.00 per 1000.

SPRING BEARING VARIETIES

AROMA (P)—Large; dark red; uniformly roundish, heart-shaped; flesh firm and of very good quality. Stands shipping well; plants vigorous and very productive; blossoms rich in pollen and is good fertilizer for imperfect varieties. Late.

BUBACH (P)—Very prolific, excellent flavor and large size. A number of new varieties have been pitted against it, claiming superiority in one way or another, but Bubach is among the best, and continues to grow in favor.

CHARLES I—Probably the largest and most productive Strawberry grown. Quite dark red color. A very firm fruit and for delicacy of flavor it has no equal.

DR. BURRILL (P)—Fruit is large, beautiful, dark red in color, and of excellent flavor. Shape similar to the Senator Dunlap and ripens at the same time as the Dunlap; great canning berry. It is an excellent berry for the home garden or for the market. No better.

GANDY (P)—Large, light crimson; flesh of firm, good quality. Plants vigorous but should be planted in swamp or moist, clay soils. Perfect. Late.

GIBSON—This is the most popular Strawberry extant today. Best for market and best for the home garden. Berry large; dark glossy, red, nearly round, very productive. Plant Gibson and success will be yours.

SENATOR DUNLAP (P)—This berry is of the Warfield type, has a perfect blossom, is hardy, productive, a splendid keeper and able to hold its own under any "rough and tumble" methods of culture to which it is likely to be subjected. It is a very heavy bearer of good size, even fruit, of a very beautiful dark red color. It is a berry to grow for either home use or market.

WARFIELD (P)—There is probably no better or more profitable berry grown for market. It is in greater demand than any other berry for canning purposes, which also creates a good market for it. Care should be taken to use the right berries as fertilizers. It needs a strong pollinizer.

PREMIER

25c doz., \$2.00 per 100; \$12.00 per 1000.

(Per). This new variety has in the space of a few short years, become the most popular early Strawberry known.

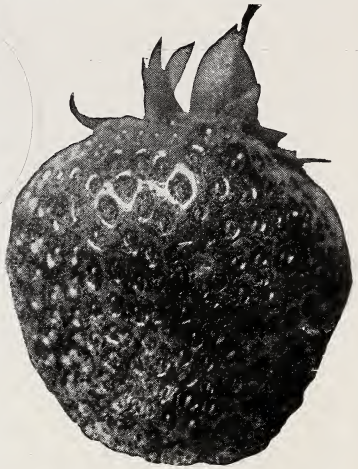
Until the advent of the Premier it seemed almost impossible to find an extra early Strawberry that was satisfactory in every way. The main qualifications for a good profitable Strawberry were lacking. Either they were too soft, ripened with green tips, or were poor color and quality; or the berries became small in size after two or three pickings.

All of these faults are now eliminated in the Premier. While it is the first variety to ripen it is of long fruiting season, and holds its size and uniformity to the last picking.

Berry has a rich, glossy appearance, being of a bright red clear through to the heart. It

is slightly tart in taste and of such firm texture that it carries well to the most distant markets. Added to these qualifications its large and generally attractive appearance makes Premier a variety sought after in all markets.

It is a strong pollinizer, vigorous grower and heavy producer. Being easy to grow it is one of the safest and most profitable Strawberries to plant, assuring one of success.



EVERBEARING STRAWBERRIES

We have been growing Everbearing Strawberries for 12 years and have tried 12 varieties. We have eliminated all but three. These have given excellent results. They will yield as much as the common varieties in June and will produce well all Summer and Fall.

Many people make a mistake in growing only one variety. Like the common varieties, Fall bearers do best if two varieties are planted together.

Try Champion and Indiana. Money back if not satisfied.

CHAMPION (Per)—This berry is a seedling of the Dunlap. Dark red in color and immensely productive. Bears thirty days after planting and continues to bear until the ground is frozen up in the Fall. All through August, September and October the vines are filled with one mass of ripe berries. Per doz., 75c; per 100, \$3.00; per 1000, \$20.00.

INDIANA (Per)—One of the largest of the Everbearers—bears the same season and ripens earlier than Champion. Is dark red with bright yellow seeds, making a fine showy appearance. Very productive. Per doz., 75c; per 100, \$3.00; per 1000, \$25.00.

PROGRESSIVE AND SUPERB—\$2.00 per 100; \$18.00 per 1000.

EXTRA SPECIAL. FRUIT FOR ENTIRE FAMILY

52 Apples. Varieties as given on page 4.
 45 Peach. Used as fillers for apple. Same as model peach orchard page 5.
 12 Pears. See varieties on page 6.
 24 Cherries. See varieties on page 5.
 12 Plums. See varieties on page 7.
 2 Apricots. Alexander and Moore Park. Special
 1 Quince. Champion. Price

148 Trees all No. 1. Regular Price	-----	\$138.00	\$118.20
100 Black Raspberries. St. Regis	-----	4.00	
100 Black Raspberries. Kansas	-----	4.00	
100 Blackberries. Eldorado	-----	3.00	
250 Everbearing Strawberries. Indiana	---	7.50	
250 Early Strawberries. Premier	-----	5.00	
12 Currants. Perfection	-----	4.20	
12 Gooseberries. Downing	-----	3.00	
3 Grapes. Blue Concord	-----	.60	
3 Grapes. White Niagara	-----	.60	

Total 830 berry plants and small fruit \$31.90 \$21.80

Grand Total for 148 trees, all No. 1 and 830

berry plants and small fruit----- \$140.00

Nothing like it ever before offered. Order early so as to be sure our stock will not be exhausted.

This assortment of fruit will supply all the needs of any family. Look at the cost! If you had set such an orchard five years ago what profit and enjoyment you could have now.

MAKING THE HOME BEAUTIFUL



More attractive homes! Homes larger, better built, more convenient, more attractive. Not only for more heat, more light, more comfort, but also for more beauty.

When God made this country it was a place of trees, shrubs and flowers. Today men are beginning to realize that God's way is the best and everywhere men and women are striving to retain as much of that former beauty as they can. Parks and reserves for everybody, playgrounds for children, green lawns and shrubs and trees and flowers. Civic centers for making better citizens.

Your own home, too, may be likewise a center of beauty at how small a cost many people do not realize. A little loving care is the largest item. Making the desert blossom like the rose is figurative, but making the home grounds more attractive is one step in the process.

A TWO-FOLD OBJECT

Landscaping has a two-fold object—beauty and utility. The plan must provide for pleasing views, beautiful foliage and charming flowers, the whole making a harmonious picture. It must also provide for convenient walks and drives, ease of handling, and, not the least important, economy of space.

Everyone has noticed the common way of breaking up the open, grassy spaces, and spotting them with individual shrubs and flowers of all kinds, of laying out drives and walks with useless crooks and turns, with no attempt to shut out unsightly objects. These common errors will be avoided by the use of a well defined plan. As a matter of fact, it is just as bad to set out grounds without a plan as to begin building the same way. It is not necessary to do all the planting at one time, or in one season; the owner may complete the plan at his own convenience.

FREE LANDSCAPE SERVICE

You may say that you do not know what to plant, that you would like to do something if you only knew what. One purpose of our landscape department is to meet just such emergencies. We are pleased to offer you the services of trained men to advise what to plant to best bring out the full beauty of your house and grounds. No job too small for our attention, no job too large for our facilities to handle.

Some one has said that as we pass through this world only once, each one of us should leave the world a better place in which to live. Certainly planting a tree, setting a shrub or making flowers bloom in a harmony of color is one way to make the world a better and more beautiful place in which to live.

Write us today for your needs.

Send in a drawing of your house and yard showing walks and drives and we will submit you a plan. For this service you send us \$2.00 and when you order this will be deducted from the amount of your bill.

SHADE TREES

ASH (Fraxinus)

EUROPEAN, MOUNTAIN—A fine, hardy tree; heads dense and regular, covered from July till Winter with great clusters of bright red berries. 6 to 8 ft., \$2.00 each; 8 to 10 ft., \$3.00 each.

BEECH (Fagus)

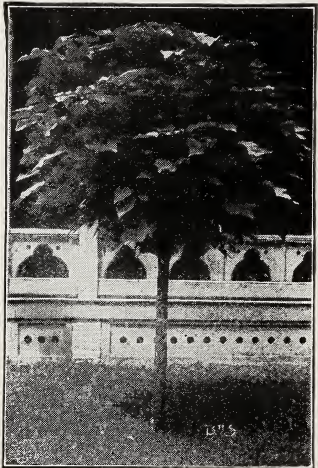
PURPLE-LEAVED—Discovered in a German forest. An elegant tree, growing 20 to 30 feet high. Foliage a deep purple, changing to crimson. Like all varieties of the Beech, this is difficult to transplant, hence small trees 3 feet high are preferable. 3 to 4 ft., \$8.00 each; 6 to 8 ft., \$12.00.

BIRCH (Betula)

WHITE—A fine tree of moderate size, with silvery bark and slender branches. 6 to 8 ft., \$5.00 each; 8 to 10 ft., \$6.00 each.

CUT-LEAVED WEEPING

—One of the most elegant of all weeping or pendulous trees. Its tall, slender, yet vigorous growth, graceful, drooping habit, silvery white bark and delicately cut foliage present a combination of attractive characteristics rarely met with in a single tree. 6 to 8 ft., \$5.00 each; 8 to 10 ft., \$6.00 each.



Catalpa Bungei

6 to 8 ft., \$5.00 each; 8 to 10 ft., \$6.00 each.

THE CATALPAS

BUNGEI (Chinese Catalpa)—Umbrella-like head only three or four feet high and twice as broad, forming a pretty dome-shaped head of great, soft, leathery leaves. It is very desirable when grafted on stems five to six feet high for border along drive, walk or around a park where you do not desire tall trees. 3-yr. head, \$3.50; 2-yr., \$2.50.

ELM (Ulmus)

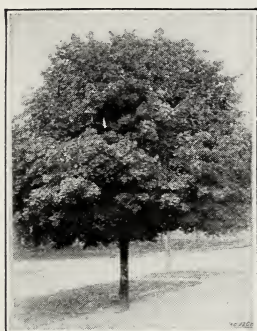
AMERICAN—A noble native tree of large size, wide-spreading head and graceful, drooping branches. One of the grandest park and street trees. 8 to 10 ft., \$2.00 each; 2 in., \$5.00 each; 3 to 4 in., \$10.00 each.

MULBERRY (Morus)

TEA'S WEEPING RUSSIAN—A weeping variety of the now well-known Russian Mulberry; perfectly hardy in Summer and Winter; withstands extreme heat and cold and grows naturally in a very graceful form. 2 yr. 4 ft. \$2.50.

MAPLE (Acer)

NORWAY—A native of Europe; a large, handsome tree, with broad, deep green, shining foliage. The handsomest and one of the most desirable trees for street, park or lawn. 6-8 ft., \$2.00; 2 in. \$3.50.



Norway Maple

hardy; desirable for street planting, and succeeds in many sections where other varieties of Maple will not thrive. 6 to 8 ft., \$1.00; 8 to 10 ft., \$1.50.

JAPAN—Foremost among ornamental stock are the Japanese Maples which, for beauty of coloring, are unsurpassed. They are yearly gaining in favor, and for effective grouping in landscape gardening are invaluable and unrivaled. Strong plants in fine assortment, including varieties with finely cut, bright and dark red, yellow and green and variegated leaves. 2 to 3 ft., \$10.00.

WIER'S CUT-LEAVED MAPLE

A beautiful tree of graceful, half drooping habits. Leaves finely cut and luxuriant. One of the best of the ornamental trees. 6-8 ft., \$1.00; 8-10 ft., \$2.50.

POPLAR (Populus)

LOMBARDY—Well known for its erect, rapid growth and commanding form; very desirable in large grounds and along roads to break the average height and forms of other trees. 6 to 8 ft., \$1.50.

ORIENTAL PLANE—A lofty, wide-spreading tree; heart-shaped leaves; valuable for its handsome foliage and free growth; not so subject to disease as our native species. Entirely free from worms and insects. One of the oldest cultivated trees known. One of the best and most popular for street and avenue planting. 6 to 8 ft., \$1.50.

WILLOW (Salix)

WISCONSIN WEEPING—A large tree with long, drooping branches, similar to the Babylonica, but much hardier. 6 to 8 ft., \$1.50.

WEEPING BABYLONICA—A well-known and most graceful tree of large size. Its fresh, bright green tint and long, wavy branches make it very attractive. 6 to 8 ft., \$2.00.

KILMARNOCK WEEPING—An exceedingly graceful tree, with large, glossy leaves; very hardy. 6 to 8 ft., \$2.00.

SPECIAL

HEAVY ELM AND MAPLE—2-in., \$5.00 each; 3 in., \$8.00 each; 4 in., \$10.00 each. Special prices on larger sizes.



HARDY ORNAMENTAL SHRUBS

Its not a home until its planted. Just a little shrubbery adds a touch of beauty. It has been said that one may doubtless live as long without beauty around the home but just as doubtless not as happily.

By carefully selecting different varieties of shrubs a succession of bloom may be had throughout the season. Shrubs give you not only the cool green of foliage but the flash of colorful blossoms.

ALMOND

DOUBLE-FLOWERING—A most desirable early-flowering shrub, with white and pink flowers. 2-3 ft. 50c; 3-4 ft., 75c.

ALTHEA (Rose of Sharon)

Unsurpassed by anything in the hardy shrub line for freedom of blossom or range of color. From midsummer until frost, when few other shrubs are in bloom, the Althea is most handsome, with its large camellia-like flowers of the most varied and beautiful shades. 2-3 ft., 45c; 3-4 ft., 75c.

DOUBLE WHITE—White, with crimson center.

DOUBLE VARIEGATED—Pink and white.

DOUBLE PURPLE.

DOUBLE BLUE—Deep blue.

DOUBLE RED—An excellent striped variety, nicely marked white and deep rose.

ARALIA

ARALIA PENTAPHYLLA—A pretty medium sized shrub. Holds leaves until late in Fall. Valuable for screen planting. Flowers inconspicuous. 18-24 in., 50c; 3-4, ft., 75c.

SPINOSA (Hercules Club)—A large shrub with stout prickly stems and compound leaves, flowers creamy white in huge panicles sometimes 2 feet long, followed by dark purple berries, giving a tropical appearance to landscape planting. Very good. 3-4 ft., \$1.00; 4-6 ft., \$1.50.

AZALEA

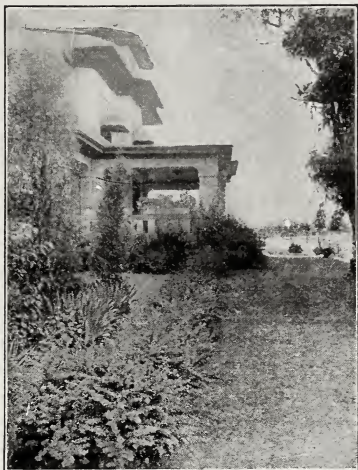
MOLLIS—A beautiful species recently brought from Japan; It has fine, large trusses of flowers in shades of pink and yellow; requires some protection. 12-18 in., \$2.00; 18-24 in., \$3.00; 2-3 ft., \$4.00.

BUDDLEIA (Butterfly Bush)

BUDDLEIA VEITCHI MAGNIFICA—A very attractive new addition to the flowering plants. While a perennial in habit, yet because of its vigor and size, it is used largely in shrub plantings. The tops in severe Winter will freeze back, but it pushes with such renewed vigor this is not harmful. The flowers are borne on the tips of every bit of new growth, and in August the plants are masses of purple and violet flowers, very conspicuous that attract butterflies. 2-3 ft., 75c.

BARBERRY THUNBERGII OR JAPANESE BARBERRY

Perfectly hardy, will make a dense hedge from three to four feet high that will always remain symmetrical without pruning. However, it may be pruned to almost any form. It bears large nearly round crimson berries which remain on nearly all winter. The foliage colors beautifully in autumn. It is perfectly safe to plant this Barberry as it has no connection with the rust that affects other Barberry and the grain. 12-18 in., 25c; 18-24 in., 50c.



Barberry Thunbergii

BECHTEL'S DOUBLE FLOWERING CRAB

A sturdy grower, hardy and of medium size, flowers large, double, resembling double pink roses; are very fragrant when in bloom, looks like mammoth rose bush, blooms young. 2-3 ft., \$2.50.

CALYCANTHUS (Sweet Scented Shrub)

FLORIDUS—A native shrub attaining a height of from 6 to 8 feet. The flowers, springing from the axis to the leaf, are double and very fragrant, and of a chocolate-red color; foliage is quite large and glossy green. Wood also has a spicy odor. 12-18 in., 50c; 18-24 in., 75c.

CLETHRA

ALNIFOLIA (Sweet Pepper Bush)—A very valuable shrub for border planting on account of abundance of sweet-scented white flowers. Adapted to wet and shady places. 18-24 in., 50c.

COLUTEA

ARBORESCENS (Bladder Senna)—A rapid-growing large shrub with light green foliage. Yellow flowers in June followed by showy red pods. 18-24 in., 50c.



Cornus

CHIONANTHUS (Fringe Tree)

VIRGINICA (White Fringe Tree)—10 to 20 feet. In favorable locations this develops into tree-like proportions. The contrast between its large, deep green, thick, leathery leaves and the loose drooping bunches of white flowers resembling silken fringe is fine; blossom May or June. 2-3 ft., \$1.00.

CORNUS (Dogwood)

This group of shrubs is adaptable to use in border and screen plantings. Attractive flowers. Abundance of berries and highly-colored foliage in Autumn. The twigs are a bright color in Winter time.



PANICULATA (Gray Dogwood)—A very useful variety for screening purposes. Flowers white, fruit white on bright red stems. 3-4 ft., 75c; 2-3 ft., 50c.

SIBIRICA (Red Twigged Dogwood)—With small clusters of white flowers, its blue berries and its dark red bark, this yellow twigs. Makes an attractive combination with red- is one of the most attractive shrubs. 2-3 ft., 50c; 3-4 ft., 75c.

STOLONIFERA VAR. AUREA (Golden-barked Osier)—Bright yellow twigs. Makes an attractive combination with red- twigged dogwood. 2-3 ft., 50c; 3-4 ft., 75c.

VAR. FLORIDA (White Flowering Dogwood)—Grows from 20 to 25 feet high. Flowers before leaves appear, 3½ inches in diameter. Very durable, lasting two weeks; foliage grayish green, glossy and handsome, turning to a deep red in the Fall. A valuable tree for ornamental planting. 2-3 ft. 50c; 3-4 ft., 75c.

CRATAEGUS (Hawthorn)

OXYACANTHA VAR. COCCINEA FLORE PLENO (Paul's Double Scarlet Thorn)—The best of the double varieties. A small ornamental tree. Flowers a bright carmine-red superior to any of its color. 2-3 ft., 50c.

CYDONIA (Japan Quince)

JAPONICA—Brilliant flowering shrub covered with scarlet flowers early in the Spring. Good for massing. 18-24 in., 50c; 2-3 ft., 75c.

DEUTZIA

One of the finest of shrubs for abundance of pretty blossoms which cover the plants in early Spring. Can be used in borders, mass or specimen planting. Very good.

CRENATA FLORE PLENO—Flowers double, white, tinged with rose, blooming in late June. Very hardy. 2-3 ft., 50c; 3-4 ft., 75c.

GRACILIS—Of dwarf habit. Flowers pure white. One of the first to bloom. Fine for edging in front of taller shrubs. 12-18 in., 50c.

LEMOINEI—Flowers pure white, shrub medium and free-flowering. Excellent for forcing. 2-3 ft., 50c; 3-4 ft., 75c.

PRIDE OF ROCHESTER—Produces large double white flowers tinged with rose. Profuse bloomer. One of the best. Flowers early. 2-3 ft., 50c; 3-4 ft., 75c.

DIERVILLA (Weigela)

VARIEGATED-LEAVED—Leaves bordered with yellowish white, finely marked; flowers bright pink. 12-18 in., 35c; 18-24 in., 50c; 2-3 ft., 75c.

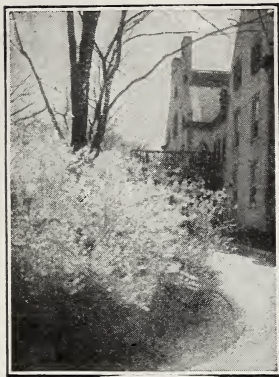
ROSEA—An elegant shrub, with fine, rose-colored flowers. Introduced from China, and considered one of the finest plants ever discovered. Quite hardy; blooms in May. 12 to 18 in., 50c; 18-24 in., 50c; 2-3 ft., 75c.

EVA RATHKE—This is the winner over all. It is one of the best dark red shrubs that is known in existence. It comes on and off throughout the summer, blooming more abundantly some summers than others. Dwarf in habit. I have three in my own yard and they are indeed wonderful. You cannot go wrong in planting Eva Rathke. 12 to 18 in., 50c; 18 to 24 in., 70c; 2 to 3 ft., \$1.00.

EXOCHORDA GRANDIFLORA

PEARL BUSH—It grows vigorously to a height of 6 to 10 feet. The early buds look like pearls strung on slender threads. May opening them up to long, gleaming sprays of pure white. 2-3 ft., 75c.

ELAEAGNUS (Oleaster)



Euonymus

Euonymus—Very attractive in Autumn when full of bright colored fruit and brilliant crimson foliage. Bark very corky. 2-3 ft., 75c; 3-4 ft., \$1.00.

ANGUSTIFOLIA (Russian Olive)—15 to 25 feet. A very large shrub or small tree; the leaves are narrow and silvery white in color; blossoms are small; yellow and very fragrant; perfectly hardy. 2-3 ft., 50c; 3-4 ft., 75c.

LONGIPES (Silver Thorn)—4 to 6 feet. Of dwarf, spreading habit; foliage dark green above, silvery white beneath; small yellow flowers; fruit oblong, bright red, covered with small white dots, and is edible. Valuable on account of ornamental character of the fruit. 2-3 ft., 50c; 3-4 ft., 75c.

EUONYMUS (Strawberry Tree)

ALATUS — (Cork-barked

FORSYTHIA (Golden Bell)

This is the first shrub to blossom in the Spring, the golden yellow flowers appearing in great profusion before leaves form. 2-3 ft., 50c; 3-4 ft., 75c.

HAMAMELIS

VIRGINIANA (Witch Hazel)—Has a wealth of delicate yellow flowers appearing in the late Fall. Exceptionally beautiful at the edge of a wood or along woodland paths. 2-3 ft., 50c.

HYDRANGEA

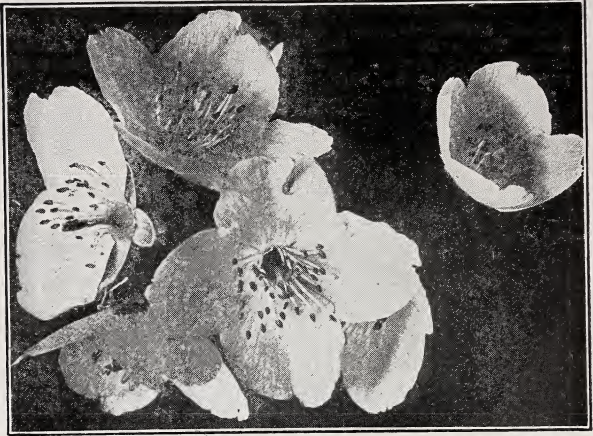
ARBORESCENS (Snowball Hydrangea)—Has the appearance of a low-growing snowball with its large clusters of white flowers. Particularly desirable on account of coming into bloom before the *H. paniculata*. Its blooming period is from early June until middle of August. A very desirable shrub. 12-18 in., 40c; 18-24 in., 60c; 3-4 ft., 75c.

PANICULATA GRANDIFLORA—One of the most popular shrubs in cultivation, blooming at a time when few shrubs are in bloom. Flowers borne in huge panicles from 8 to 12 inches long, delicate pink changing to brown. Very desirable. 12-18 in., 50c; 18-24 in., 60c; 3-4 ft., 75c.

TREE HYDRANGEA—This is the *Paniculata Grandiflora* with all its beauty of great clusters of blooms in tree shape. Will grow 10 to 12 feet high. 2-3 ft., \$1.50; 3-4 ft., \$2.50.



Hydrangea



Syringa

KERRIA (Corchorus; Globe Flower)

An attractive shrub with slender green branches and showy yellow flowers. It thrives in almost any well-drained soil. Hardy, but benefited by protection from cold winds in severe climates.

JAPONICA—A slender green-branched shrub covered with single yellow flowers from July to October. 2-3 ft., 50c.

LONICERA (Honeysuckle)

TATARICA RUBRA (Red Tartarian)—A beautiful shrub. Vigorous and producing large, bright red flowers, striped with white, in June. Very desirable. 2-3 ft., 50c; 3-4 ft., 75c.

TATARICA ALBA—A large shrub having white flowers in May and June. 2-3 ft., 50c; 3-4 ft., 75c.

MORROWI (Japanese Bush Honeysuckle)—A spreading variety growing 4 to 6 feet tall; blooms early in spring, pure white, followed by pretty red berries. 3-4 ft., 75c.

MAHONIA (Ashberry)

AQUIFOLIA (Holly-leaved Mahonia)—A native shrub; very handsome, with purplish shining prickly leaves and bright yellow flowers in May, followed by bluish berries. Very ornamental. 12-18 in., \$2.50 each.

PHILADELPHUS (Mock Orange or Syringa)

This old-fashioned shrub with creamy white flowers borne in clusters is found in many plantings. There are many varieties that offer a wide range of size and blooms. All varieties are strong growers and are suitable for border, screen or specimen planting. We have a few new varieties that are exceptionally fine and you will be highly pleased with them. 2-3 ft., 50c; 3-4 ft., 75c.

AVALANCHE—A graceful shrub with slender arching branches covered with white flowers. One of the best.

CORONARIUS (Garland Syringa)—Pure white; very fragrant flowers. One of the first to bloom.

CORONARIUS VAR. AUREUS (Golden-leaved Syringa)—A beautiful shrub with golden yellow foliage. Keeps its color the entire season. Splendid for grouping with other shrubs in border planting.

GORDONIANUS (Gordon's Syringa)—A vigorous grower and profuse bloomer. White flowers; fragrant and late.

GRANDIFLORUS (Large-flowered Syringa)—Has large showy flowers, somewhat fragrant. Bark reddish. A rapid grower.

LEMOINEI (Lemoine's Syringa)—A graceful shrub with very rich foliage and large pure white fragrant flowers in June.

MONT BLANC—A charming variety; dwarf in habit with very large fragrant flowers produced in great abundance.

PHILADELPHUS VIRGINAL—The newest and loveliest of the Syringaeas. Blossoms are as large as a dollar, waxy white and continue all summer. Nothing before ever like it. Special one to a customer, 2-3 ft., \$1.25 each



RHAMNUS (Buckthorn)

CATHARTICUS (Common Buckthorn)—8 to 10 feet. A very useful hedge plant. Foliage dense and dark green. Has attractive white flowers in June and July. 18-24 in., 50c; 3-4 ft., 75c.

RHUS (Sumac)

The Sumacs as a class appeal to the planter most for the wonderful Fall coloring of the foliage.

COTINUS (Purple Fringe)—Better known as Smoke Tree. Flowers in loose panicles which become purple and give tree a smoky appearance in early Fall. Foliage of bright green and glossy color. 2-3 ft., \$1.00.

GLABRA (Smooth Sumac)—10-15 ft. One of the best of the Sumacs to produce natural effects. 3-4 ft., 75c.

LACINIATA—8-10 ft. A cut-leaf form of the above that looks like a fern, tropical in appearance and showy. 2-3 ft., 75c.

TYPHINA (Staghorn Sumac)—10-12 ft. A large shrub or tree much used in landscape background work. Brilliant red foliage in the Fall. 2-3 ft., 75c.

PRUNUS (Plum)

TRILOBA (Double-flowered Plum)—A very desirable addition to the hardy shrubs. Flowers double, delicate pink and thickly set on long slender branches. Blooms in May. 2-3 ft., \$1.50 each.

PISSARDI (Purple-leaved Plum)—This is the finest purple-leaved tree or shrub. In the Spring the leaves are crimson, changing to dark purple as the season advances. This splendid color is maintained until the leaves drop in the Fall. 3 to 4 ft., \$2.50 each.

RHODOTYPOS

KERRIOIDES (White Kerria)—White. May and June. Very ornamental shrub with bright green, pleated leaves and large white flowers one-half to one inch across. These are produced in the ends of the branchlets and are followed by conspicuous shining black fruits that adhere practically all Winter. A desirable shrub. 18-24 in., 50c; 3-4 ft., 75c.

ROSA RUGOSA (Japan Rose)

RUGOSA (Single Japan Rose)—Pink and white. May to September. Upright, hardy shrubs with very thorny branches. Leaves are dark green, pubescent and pleated. Flowers are frequently two inches across and very showy. The fruits (hips) that follow are also bright red and very ornamental. The plant is very desirable for massing and to get the best blossoms occasionally cut out the old wood to encourage new growth. 18-24 in., 50c; 2-3 ft., 75c.

SAMBUCUS (Elder)

NIGRA VAR. AUREA (Golden-leaved Elder)—One of the best yellow foliage plants. Retains its color the entire season and is very conspicuous in every planting. Quick to establish itself, robust grower and attractive. 2-3 ft., 50c.

SPIREA (Meadow Sweet)

The Spirea is one of the best shrubs grown. Very attractive for garden or shrub border.

ARGUTA—Of dwarf habit, spreading head, flowers pure white. The best of the very early flowering white varieties. Blooms in May. 18-24 in., 50c; 2-3 ft., 60c.

ANTHONY WATERER—A fine dwarf Spirea with dark crimson flowers. 12-18 in., 40c; 18-24 in., 60c.

BILLIARDI (Billiard's Spirea)—Flowers are rose-colored. Blooms nearly all Summer. 2-3 ft., 50c; 3-4 ft., 60c.

BILLIARDI ALBA—Similar in foliage to Billiard except it has a white blossom. Hardy. 2-3 ft., 50c; 3-4 ft., 60c.

BUMALDA—A handsome variety from Japan. Dwarf in habit and of vigorous growth. Foliage narrow; flowers rose-colored and borne in great profusion. Blooms a long time. 18-24 in., 35c; 2-3 ft., 50c.

CALLOSA (Fortune's Spirea)—Has large panicles of deep rosy blooms. Grows freely and blooms nearly all Summer. Excellent. 18-24 in., 35c; 2-3 ft., 50c.

CALLOSA ALBA—One of the best dwarf white-flowering shrubs. Very symmetrical. 18-24 in., 35c; 2-3 ft., 50c.

DOUGLASI (Douglas's Spirea)—A beautiful variety with spikes of deep rose-colored flowers in July and August. 18-24 in., 35c; 2-3 ft., 50c.

FROEBEL SPIREA (S. Froebeli)—Of the Anthony Waterer type, but more sturdy in habit. Canes distinctly reddish; young foliage tinged red; flowers rose color. Brilliantly colored in autumn. 12-18 in., 40c; 2-3 ft., 60c.

OPULIFOLIA (Ninebark)—Grows upright, attaining 8 to 10 feet. Bears white flowers in June. Old flower heads turn to a dark red and make a striking variety of colors at different stages of maturity. 2 to 3 ft., 40c; 3 to 4 ft., 60c.

THUNBERGII—Forms a dense feathery bush; 3 to 5 feet high. Foliage changes to bright scarlet shades in autumn. 18-24 in., 35c; 2-3 ft., 60c.

VAN HOUTTEI—This is undoubtedly the most charming and beautiful of all the varieties having pure white flowers in clusters, the branches drooping to the ground. Foliage a rich green. Very profuse in bloom and plants remarkably hardy. An indispensable ornament for lawn or hedges. The variety most commonly planted. Commonly called Bridal Wreath. 2-3 ft., 35c; 3-4 ft., 60c.

SYMPHORICARPOS

RACEMOSUS (Snowberry)—(F) 4-5 ft. This shrub has small pinkish flowers in July, followed by white berries which remain on well into the winter, 2-3 ft., 35c; 3-4 ft., 60c.

VULGARIS (Coralberry, Buck Bush, Indian Currant)—4-5 ft. A very hardy, tough shrub that can be established where others fail. Its wealth of coral-like red berries are quite showy during Winter. This and the Snowberry go well together. 2-3 ft., 35c; 3-4 ft., 60c.

SYRINGA (Lilac)

Lilacs are such old and intimate friends that it seems they would not need to be described. Yet the intrinsic worth of these flowers with their white, pink, blue, purple, and lilac tints in May and a perfume that permeates the very air for quite a distance beyond the tips of the heart-shaped leaves, is something the enjoyment of which will not cloy, even while other flowers come and go on waves of popular favor. It is a very upright shrub, easily grown at home in any soil.

PERSIAN—Small foliage and bright purple flowers. 75c each.

PURPLE—The well-known old-fashioned variety with purple fragrant flowers in May. 2 to 3 ft., 60c; 3 to 4 ft., 75c.

CHAS X—Red. \$1.00 each.

SOUVENIR DE LUDWIG SPAETH—Dark purplish red flowers, large, and in long panicles. A distinct, superb sort that will give great satisfaction. \$1.00 each.

TAMARIX

Shrubs of strong but slender, delicate growth similar to the asparagus. Their pink flowers, filmy foliage and gracefulness make them one of the most desirable shrubs for background or inter-planting. Will grow in poor, dry soil where other shrubs fail.

AESTIVALIS (F) 6-7 ft.—Pink. June. This species has bluish gray foliage, carmine pink flowers, and also blooms late in the Summer. 2-3 ft., 50c; 3-4 ft., 75c.

AFRICANA—7-10 ft. Deep pink. April and May. This is the most vigorous of any. Sea green foliage and pink flowers; bloom early. 2-3 ft., 50c; 3-4 ft., 75c.

VIBURNUM (The Snowballs)

3 ft., \$1.00; 2 ft., 75c; 18 in., 50c.

In this group are some of the most conspicuous shrubs for blossoms, berries or autumnal foliage we have. They are all hardy, vigorous and healthy. For individual specimens or shrubbery borders they are desirable. Most of them will grow in partial shade but do better in the sun.



Plicatum

LANTANA (Wayfaring Tree)—(F.) 10-12 ft. White. June. A large, vigorous shrub with soft, heavy lantana-like leaves and large clusters of white flowers in May, succeeded by red berries which turn black as they ripen.

OPULUS (High Bush Cranberry)—8-10 ft. White. May. Strong, rather spreading habit with single white flowers borne in flat clusters. The very showy red fruit which follows and the beautiful coloring in the Fall go to make it one of the best.

PLICATUM (Japanese Snowball)—6-8 ft. White. May. This species is one of the most satisfactory shrubs grown. Its pure white double blossoms with a setting of dark pleated leaves and perfect form make it one of the best. Fine for an individual specimen or in groups.

STERILE (Old-fashioned Snowball)—10-12 ft. White. May. This old-fashioned variety is well known to every lover of plants. Its balls of pure white literally cover the bush when in bloom.

XANTHORRHIZA

SORBIFOLIA (Ash-leaved Spirea)—Cream. July. Blooms in July in long white spikes. Foliage resembles an ash somewhat. Valued for shady, moist locations. \$1.00 each.



ORNAMENTAL HEDGE

A small amount of money invested in beautiful hedges will add more value to a country or town home property, dollar for dollar, than any other similar investment without exception. A hedge planted about the borders of a lawn will transform a heretofore bare looking spot into a place of beauty; and you can keep it low or let it go high, as a screen. City lots may be divided by hedging with fine effect. In dozens of different ways, which suggest themselves to the property owner, hedging may be used with great profit. A hedge is easily set, a little care will keep it in perfect condition, and it is a wonder that more are not planted.



Privet Hedge

LIGUSTRUM (Privet)

AMURENSE (Amoor River Privet)—A valuable ornamental shrub for hedging and borders. Very hardy foliage; glossy green, and holds its color almost the entire year. Will stand clipping to any extent. 1-yr., \$8.00 per 100; 2-yr., \$12.00 per 100; 3-yr., \$20.00 per 100.

IBOTA (Chinese Privet)—A native of China and Japan. Foliage long and shining; flowers large, white and fragrant. Valuable for its flowers and foliage. 1-yr., \$8.00 per 100; 2-yr., \$12.00 per 100; 3-yr., \$20.00 per 100.

CALIFORNIA PRIVET—2-year, well-branched. 10c each; 80c per 10; \$6.00 per 100. 1-yr., \$50.00 per 1000.

BERBERIS (Barberry)

For illustration see page 19.

1-yr., \$10.00 per 100; 2-yr., \$25.00 per 100; 3-yr., \$40.00 per 100.

THUNBERGI (Japanese Barberry)—This is a low shrub, with brown, horizontal branches growing so thick and matted that, even though the leaves fall in Winter, the hedge still is dense. Add to that the appearance of the bright scarlet berries growing almost as thick as leaves and fresh till Spring and you have an idea of its Winter garb. In the Summer there are hosts of little pale yellow flowers among small, round foliage. It grows 3 feet high only.

NORWAY SPRUCE—12 to 15 inch. \$5.00 per 10; \$40.00 per 100.

ARBOR-VITAE—12 to 15 in. \$4.00 per 10; \$35.00 per 100.

VINES AND CREEPERS

Nothing lends such pleasing effect to wall or veranda as the judicious use of vines. The hardy vine is best adapted for covering an unsightly wall or for furnishing shade and ornament to verandas. Hardy vines practically take care of themselves after they are once established and are much more desirable and less trouble than annual or tender varieties.



AMPELOPSIS VEITCHI (Boston Ivy)

A beautiful hardy climbing plant. This is one of the finest climbers we have for covering walls, as it clings firmly to the smoothest surface, covering it smoothly with overlapping foliage, giving it the appearance of being shingled with green leaves. The color is a fresh deep green in Summer, changing to the brightest shade of crimson and yellow in Autumn. It is quite hardy and becomes more popular every year. 2-yr., 60c.

AMPELOPSIS ENGELMANNI (Engelmann's Ivy)—A type of the Virginia Creeper, but different in growth as well as foliage. It has much shorter joints, and very much smaller and thicker foliage. This is the only ampelopsis that is hardy and that will cling to brick, stone or plaster. It is a fast grower. Each 2 yrs., 60c.

AMPELOPSIS QUINQUEFOLIA (Virginia Creeper)—Deeply cut leaves which turn to a beautiful crimson in fall; fine for covering trees, rocky slopes, walls etc. Very hardy. Each, 50c.

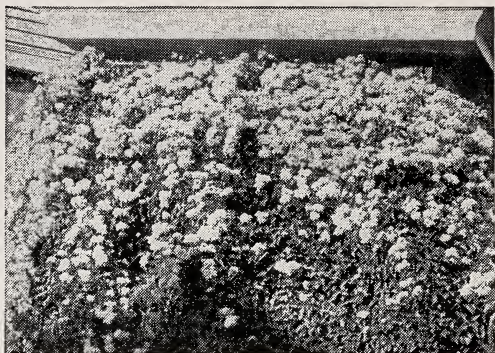
ARISTOLOCHIA SIPHO (Dutchman's Pipe Vine)

A vigorous and rapid-growing climber, bearing singular brownish-colored flowers, resembling in shape a pipe. Its flowers, however, are of little value compared to its light green leaves, which are of very large size, and retain their color from early spring to late fall. Perfectly hardy. Strong plants, each 60c.

BIGNONIA (Trumpet Vine)

For covering unsightly places, stumps, rockwork, or wherever a showy flowering vine is desired, the Bignonias will be found very useful. The flowers are large, attractive, and borne profusely when the plants attain a fair size. 50c each.

BITTERSWEET (*Celastrus Scandens*)—A perfectly hardy vine of rapid growth. Handsome, glossy foliage. Large clusters of beautiful orange-crimson berries that are retained all winter. The berries are in great demand for inside winter decorations. We do not know of any vine that is more satisfactory than the Bittersweet. It is exceptionally fine for trellises and porches. 50c each.



Clematis Paniculata

CLEMATIS

A beautiful class of climbers, many of the varieties with flowers 5 to 7 inches in diameter. Excellent for pillars or trellises; or when used for bedding, running over rock work or an old tree or stump, they make an excellent show. They delight in a rich soil, a sunny situation; perfectly hardy.

DUCHESS OF EDINBURGH—A free-flowering, double white variety, with medium-sized flowers. \$1.00.

HENRYI—Fine large, creamy white flowers. A strong grower and very hardy, one of the best of the white varieties; a perpetual bloomer. \$1.00.

JACKMANI—The flowers, when fully expanded, are from 4 to 6 inches in diameter; intense violet-purple, with a rich velvety appearance, distinctly veined. It flowers continually from July until cut off by frost. \$1.00 each.

JACKMANI ALBA—Fine, large, pure white flowers. \$1.00 each.

MME. EDOUARD ANDRE—This is the nearest approach to a bright red Clematis and has been called the Crimson Jackman. The plant is a strong, vigorous grower and very free in bloom. Color a distinct crimson-red; a very pleasing shade and entirely distinct from all other varieties. \$1.00 each.

PANICULATA, or SWEET-SCENTED JAPAN CLEMATIS—A Japanese plant possessing unusually attractive merit. A vine of very rapid growth, quickly covering trellises and arbors with handsome, clean, glossy green foliage. The flowers are of medium size, pure white, borne in immense sheets and of a most delicious and penetrating fragrance. The flowers appear in September, at a season when very few other vines are in bloom. 60 each.

HONEYSUCKLE (Lonicera)

CHINESE TWINING (Lonicera Japonica)—A well-known vine, holding its foliage nearly all Winter. Blooms in July and September, and is very sweet. 50c each.

COMMON WOODBINE (Lonicera periclymenum)—A strong, rapid grower, with very showy flowers, red outside, buff within. June and July. 50c each.

HALL'S JAPAN (Lonicera Halliana)—A strong, vigorous evergreen variety, with pure white flowers, changing to yellow. Very fragrant; covered with flowers from June to November. 50c each.

WISTERIA

CHINESE PURPLE (Wisteria Sinensis)—A most beautiful climber of rapid growth, and producing long, pendulous clusters of pale blue flowers. When well established it makes an enormous growth; it is very hardy; and one of the most superb vines ever introduced. The very best vine to grow when it is desired to have it shade the upper part of the house, as its heaviest growth is at the top. 50c each.

CHINESE WHITE (Wisteria sinensis alba)—Introduced from China, and regarded as one of the greatest acquisitions; a rather slow grower. 50c each.

PEONIES

The finest list in Indiana to choose from. Peonies may be planted in the Spring or Fall with equally good results. We planted an acre last Spring that were in full bloom on June 5th to 10th. They will not bloom quite as early the same season they are planted as they will the second year.

We offer the following varieties at prices offered in good 3 to 5 eyes that will bloom the first season. We purchased our original plantings from the best Peony experts and we paid much more than we ask for same.



HUMEI PEONY

ALICE ROOSEVELT (Terry)—White, large and fragrant, center petals rosy purple, center cream, shading white. 50c each.

DUCHESS OF ORLEANS—Deep pink, standard for mid-season. Very fine. 50c each.

DELICATISSIMA—Fine pink for cutting. 50c each.

EDOUARD ANDRE—Dark red, early, fine. 75c each.

EDULIS SUPERBA—Best early pink, fine for decoration, good commercial sort. 50c each.

EMPEROR WILLIAM—Best of all reds, very fine, blooms profusely, superior to Felix. \$1.00 each.

FELIX CROUSSE—Red, a leader for cut flowers, very showy. 75c each.

FESTIVA MAXIMA—White, the best of all early white for cut flowers. 50c each.

ESTHER (Terry)—White, outer petals rose, very fragrant, like a rose, one of Terry's best. \$1.00 each.

ELSIE LAPWORTH (Terry)—White, large, globular, outer petals tinted rose tipped white, base straw color, very fragrant. 75c each.

GROVER CLEVELAND—Deep crimson, large globular type, fringed. 50c each.

GOLDEN HARVEST (Rosenfield)—Medium size, pale pink to creamy white, rather dwarf, but A-1 in every respect. 75c each.

GENERAL SHERIDAN (Terry)—Globe; deep pink, tip white; vigorous and free. A-1. 75c each.

GENERAL MILES (Terry)—Brilliant red, large, globular and robust. 75c each.

HELENA LESLIE—Very good type. 50c each.

HELLO CENTRAL—Fine, early sort. 50c each.

HUMEI (Cornell)—Large, pink, strong and late; also called Humei Carnea. 50c each.

LOUIS VAN HOUTTE—Dark red, very free, tall, good for cutting. 75c each.

KARL ROSENFELD—Dark red, very fine. midseason. \$1.00 each.

MME. DUCEL—Salmon, rose, midseason, very fine. 50c each.

MONS JULES ELIE—Pale rose, very fine early sort. 75c each.

PAPIVAFLORE—Cream, center white. 75c each.

PURPLE RED—Red, similar to Felix Crousse. 75c each.

RUBRA TRIUMPHANS—Dark crimson, early midseason. 75c each.

RUBRA SUPERBA (Richardson)—Rich, red, free, large flower; superior in every way; midseason. 50c each.

VICTOR HUGO—We consider this the handsomest Peony on our list; dark red, very dazzling and changeable colors. \$1.00 each.

UNNAMED—Red, pink, white, flesh or mixed at 35c each; 3 for \$1.00.

SPECIAL BARGAIN OFFER

We sell 12 of any 50c varieties for \$5.00.

We sell 12 of any 75c varieties for \$7.50.

We sell 12 of any \$1.00 varieties for \$10.00.

BULBS

We can list here only a very limited number of our bulbs. If you are interested in bulbs and perennials send for our catalogue.



May Flowering Tulips

TULIPS

There are no bulbs which make such a rich and gorgeous display of blossoms with so little care and cultivation as do Tulips. Their early blooming, pretty cup-like flowers, gay colors, and brilliant effects make them spring favorites. They can be cultivated very easily, only requiring good, common garden soil to grow them to perfection. Set out any time after September 1st till ground freezes too hard, 4 inches apart. After being once started Tulips will continue to bloom every spring without further attention.

SINGLE EARLY TULIPS

Ten different colors. Very showy, each 6c, doz., 60c.

DOUBLE EARLY TULIPS

Double Tulips have mammoth peony-like flowers of brilliant and varied colors, shades and markings, and being double, the flowers last much longer in bloom than single varieties; in consequence, when single and doubles are planted in conjunction "the time of the Tulips" is greatly prolonged. Double Tulips are beautifully adapted for beds on lawn in the garden, and for mingling in clumps of a dozen or more around the edges of shrubbery. Each 6c, 60c doz.

SINGLE LATE OR SHOW TULIPS

This class of Tulips is becoming more popular each year. They deserve a wide and general planting as their stateliness has a beauty that no other class attains. We have sold large quantities and everyone speaks very highly of their merits. In masses or in shrubbery borders they are very striking and effective, bearing their large, brilliant flowers on long stems and lasting a long time. They bloom from the middle of May until June, according to weather conditions. The stems are from 18 to 24 inches long.

Late or Show Tulips make one of the best, brightest and most attractive and satisfactory flowers for the table that

can be used. They will also last as long or longer than any cut-flowers which are used for decorations. A bed of assorted Tulips used for this purpose will furnish a continuous feast for weeks during the spring. Each 6c, 60c dozen.

DARWIN TULIPS

"The Tulip Aristocrats"

The flowers of this superb class have well been called "The Tulip Aristocrats." The remarkably brilliant coloring and splendid substance of their distinctly globular or cup-shaped flowers of large size, their long, strong stems, and robust growth of plant make them unsurpassed for May blooming in the garden. Darwins are not only very desirable for outdoor bedding and last a long time after cutting, but have an advantage over other classes of Tulips in that they may be forced in pots provided it is done slowly. Another remarkable characteristic of Darwins is that the color inside the flower is just as bright and sometimes even brighter than the outside. The varieties we offer have been selected from a very large list after careful trials, and we believe they are the most sat-



isfactory that are obtainable Each 7c; doz., 75c.
Very Special—6 each of above kinds—2 dozen—\$1.25.

DUTCH HYACINTHS

Hyacinths are among the most popular and satisfactory flower bulbs grown. Their wax-like bell-formed flowers, borne in buxom trusses, are of matchless beauty and also delightfully fragrant. The colors, shades, and tints are wonderfully varied, ranging from purest white, through blush, pink, and rose, to deepest red, from daintiest porcelain through blues to black purple, and from cream through yellows to orange and rosy apricot. Hyacinths may be had in flower throughout the winter, grown either in pots of soil or glasses of water, while for garden or beds on the lawn they are gorgeously effective when in flower during the spring. The bulbs of different varieties of Hyacinths vary greatly in size and shape, some making very large, smooth bulbs; others smaller, irregular shaped bulbs. The latter, however, throw equally as fine trusses of bloom—sometimes better, than the larger bulbing varieties. In every case we send out the largest and best bulbs that the variety produces.

First size bulbs of named Hyacinths produce fine trusses of bloom and should always be selected for specimens in pots or glasses, one bulb in a 5-inch pot or three bulbs in a 7-inch pot, or six bulbs in an 8-inch pot or pan of soil or fiber are favorite ways of growing Hyacinths for exhibition or for winter flowering in the house. We strongly advise, however, that only one variety be used to each pot or pan so the development from the different bulbs will be uniform and more effective. Set about 7 inches apart and 4 inches deep. Each 20c; per dozen \$2.00.



CROCUS

Among the earliest to blossom in spring is this beautiful little flower, lifting its head almost before the snow has disappeared. Absolutely hardy for outdoor culture and may be used for pot culture. Each 5c, dozen 50c.

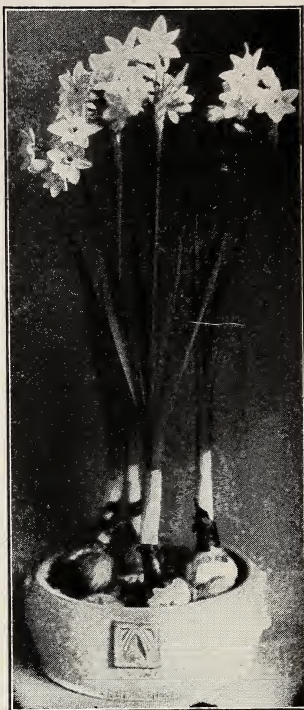
JONQUILS

(Miniature Narcissus)

A slender and graceful species with rather small, bright yellow, sweet-scented flowers, abundantly produced on stems about a foot long, each bearing a cluster of florets. One for indoor or outdoor planting. Each 5c; doz., 50c; 100, \$4.00.

PAPER WHITE NARCISSUS

The most satisfactory flower that can be grown in the house for winter blooming. They will bloom in water and rocks from six to eight weeks from time of planting. The beautiful flowers are pure white, very fragrant and borne in clusters. A very unique, simple and novel way to grow this variety six or eight bulbs in a shallow glass or china bowl with water; support the bulbs with pebbles or gravel as you would the Chinese Lily, and place the bowl in the dark until the roots have started, when you bring it to the light. The water requires changing occasionally to keep it pure. Planted any time in September or October it can be easily brought to flower by Christmas. Each, 10c; doz. \$1.00; 100, \$8.00.



HARDY FLOWERING PLANTS

Perennial flowers give the satisfaction that comes from permanency. Year after year without any special care they bloom for you. If varieties are selected with regard to time of blossom flowers from early spring to late fall may be had. Krider's choice two year old clumps are only 15c each; 12 for \$1.50. What excuse for not having flowers?

ANCHUSA—Unsurpassed for mass effect of brilliant blue.

AQUILEGIA (Columbine)—Blue, white, yellow. Very dainty.

ASTERS—Very showy, late flowering, Sept. and Oct.

CAMPANULA (Bell Flower)—Very beautiful.

CAMPANULA MEDIUM (Canterbury Bell)—Large bell shaped flower. June.

All season.

COREOPSIS—Large yellow flowers, fine for cutting. All summer.

CRYSANTHEMUM MAXIMUM (Shasta Daisy)—Very showy.

DAHLIAS—We grow only the finest. All shades, cactus and peony flowered

DICENTRA (Bleeding Heart)—Choicest member of old-fashioned garden.

DELPHINIUM (Larkspur)—Immense spires of every shade of blue. Long season.

DIANTHUS (Hardy Pink)—Another of the old fashioned garden flowers.

DIGITALIS (Fox Glove)—Stately and picturesque. Long season.

DIANTHUS BARBATA (Sweet William)—All brilliant colors. Lovely.

GAILARDIA (Blanket Flower)—Gay blossoms. Very desirable. June to November.

GLADIOLIA—Only choice kinds.

GYPSOPHILA (Baby Breath)—Delicate misty bloom. Easy culture. All season.

HIBISCUS (Mallow)—Intense color. Flowers 10 to 12 in. across. Fall.

HOLLYHOCKS—Like grandmother grew. All doubles. Lavish bloom.

HARDY PHLOX—The newest colors. All shades. Long season.

IRIS, JAPANESE—Very gorgeous and striking. New and fine.

IRIS—One of the finest hardy plants. Marvelous colorings.

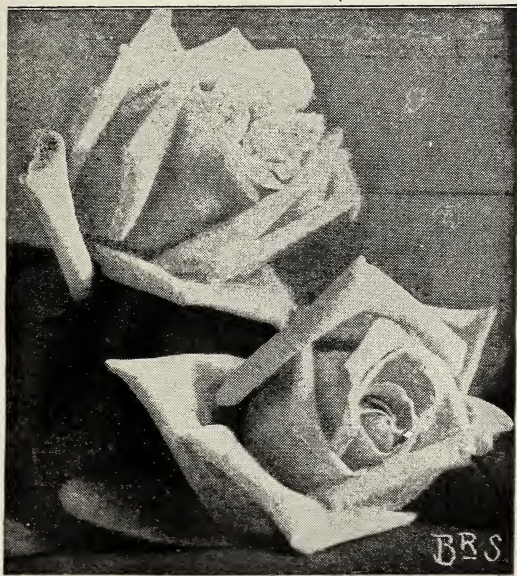
ICELAND POPPY—Very neat and brilliant. All season.

PLATYCODON (Balloon Flower)—June to October. Large showy blue.

RUDBECKIA (Cone Flower)—Golden Glow. Golden yellow.

TRITOMA (Flame Flower or Red Hot Poker)—Very showy.

KRIDER'S HARDY NORTHERN GROWN ROSES



ALL THE NEWEST—ALL THE FINEST

ALL PRICES ON 2 YR. OLD, FIELD GROWN STOCK

Roses are undoubtedly the richest and most luxurious of all flowers. No garden or greenhouse is complete without them, on account of their loveliness. Many people think that it requires a southern climate to make them grow successfully. Not so. Hardy field-grown Roses such as Krider's will be a riot of luxurious loveliness if only a little care is used in choosing the soil and keeping off the Rose pests.

A clay soil is needed for the best success. Spraying with Black Leaf 40 in an ordinary hand sprayer is usually sufficient.

Krider's northern field-grown Roses are exceptionally hardy. From the list given here any Rose connoisseur will know that only the rarest and most beautiful kinds are offered. The kinds that bring a thrill to you when the blossoms open. The kinds that bring envy to your neighbors and the never-omitted query, "where did you get it?" Send us a sketch of your yard and let our landscape department plan a Rose Garden for you.

HYBRID PERPETUAL ROSES

AMERICAN BEAUTY—

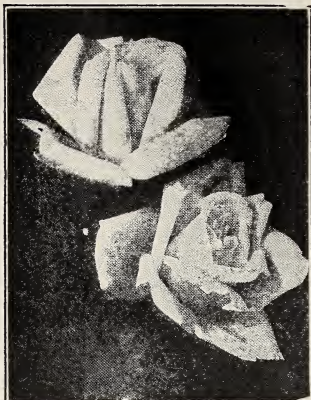
An everblooming Hybrid Perpetual. The flowers are very large, of beautiful form and very double; color a deep, rich rose. This is the Rose which is grown by the million for cut flowers. The fragrance is delightful, resembling La France. 75c each.

BETTY—Glorious coppery rose, overspread with golden yellow. \$1 each.

BRIDESMAID—Clear, bright pink; a constant bloomer; large, full and globular; one of the finest Teas. Very fragrant. 75c each.

CLIO—Flesh color, very fine Rose. 75c each.

COLUMBIA—A new Rose. A large fully double Rose. Pink. Of lasting qualities. Very vigorous grower. \$1.00 each.



Columbia

FRAU KARL DRUSCHKI—Snow white, very large, perfect form. A vigorous grower and free bloomer. Bright, heavy foliage. 75c each.

GENERAL JACQUEMINOT—Bright crimson; perfect; medium-size flowers, very much perfumed and very handsome and brilliant in the bud. General Jack blooms early and profusely; grows vigorously, with a compact habit and has handsome pointed leaves. An old favorite. 75c each.

GOLDEN GATE—A beautiful yellow Rose, very double and full; fragrant; rich cream-white tinged with golden yellow; constant bloomer. 75c each.

GRUSS AN TEPLITZ—Flowers dark, rich crimson, passing to fiery-red as they mature; one of the brightest colored Roses, large, full and sweet; vigorous grower and very hardy. Each 75c.

KILLARNEY—Carmine pink marbled in creamy white. 75c each.

MAD. CAROLINE TESTOUT—Seldom out of bloom, beautiful, light salmon-pink, edged silvery rose. Each 75c.

MAMAN COCHET (Cochet, 1893)—This is the famous Pink Cochet. Light pink shaded with salmon-yellow, outer petals splashed with bright rose; extremely large and full. Each \$1.00.

LADY HILLINGDON—Another very fine Rose, needs some protection in the north, but on account of its great beauty is well worth special care. Flowers are deep, apricot-yellow, with long, pointed buds and stems of good length. \$1.00 each.

MARSHALL P. WILDER—Extra large, full deep red; a free bloomer and very handsome. 75c each.

MRS. JOHN LAING—This Rose is a silky pink, which shows different in varying lights. Finely formed, large, double,



Ophelia

very sweet flowers, on long stems. The quick growing bush blooms nearly equal to the monthly Roses. One of the best Hybrid Perpetuals for all outside purposes, also desirable for forcing. 75c each.

OPHELIA—(Wm. Paul & Son, 1913)—A rose that is admired by everyone; its flowers are held erect on long, stiff stems, are of perfect form, good size, and of a most pleasing delicate tint of salmon-flesh, shaded with rose; very floriferous. \$1.00 each; \$9.00 per dozen.

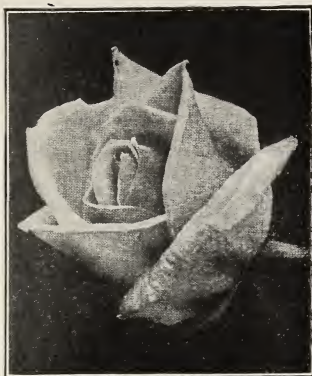
PAUL NEYRON—The largest Rose in cultivation. Sometimes called the Peony Rose. Color light, smoky rose; flowers are very double and full, delightfully fragrant. The plant makes a strong, healthy growth and has clean, glossy foliage. Blooms very good from June until late October. 75c each.

RADIANCE (Cook, 1909)—A brilliant rosy-carmine, displaying rich and opaline-pink tints in the open flower. \$1 each.

SOLEIL D'OR (Sun of Gold)—A strong, hardy Rose; large, full and double; golden orange yellow tinged with red and rosy pink; a magnificent Rose. \$1.00 each.

SUNBURST—Magnificent giant yellow Rose, suffused with orange-copper, all intense shades, giving an extremely brilliant effect. Buds long and pointed on long stout stems, opening full and double. \$1.00 each.

ULRICH BRUNNER—Seedling from Paul Neyron. Extra large, bold flowers; full and globular, very fragrant; petals large and of good substance; color rich, glowing cherry, elegantly mingled with scarlet. Vigorous, healthy and blooms freely. One of the best and finest hardy Roses. 75c each.



Sunburst

BABY RAMBLERS AND POLYANTHA ROSES

A type of Rose which is very popular for bedding purposes. They form shapely, compact, bushy specimens about 18 inches high, producing in great profusion from early in the season until severe frost, immense trusses of small flowers. Pruning is not necessary; simply remove the past season's flower stems. Each 60c; 3 for \$1.50.

BABY RAMBLER—This is the original Baby Rambler, daddy of them all. It is in bloom all the time, flowers in large clusters of brightest crimson. It grows to a height of eighteen inches and hides the plant with its bloom. A most wonderful Rose.

ORLEANS ROSE—The best Polyantha Rose ever raised. Color brilliant geranium-red, suffused with rose, center white, making a charming combination. Awarded a gold medal.

TIP TOP, "BABY DOLL" (Lambert, 1915)—This delightful little "Sweetheart" Rose is a wonder. The color is absolutely new and quite startling in its brilliancy, golden yellow tipped with clear, bright cerise. The foliage is narrow, long and sharply pointed, a deep glossy green—a very beautiful setting for the lovely little doll Roses, a bench of "Baby Doll" being an even parterre of delicious color.



Baby Rambler

BABY TAUSENDSCHOEN—We have nothing lovelier in Roses than this Dwarf Polyantha with its beautiful bouquets of creamy white, saucer shaped flowers, every petal edged with lovely rosy pink. One of the most beautiful of pot Roses.

GEORGE ELGER—A lovely little yellow Polyantha Rose with a good mixture of Tea blood. Like all of its class, it is free in growth, free in bloom, with small glossy foliage produced in profusion. The dainty little pointed yellow buds open into pretty little symmetrical Roses. Will prove a very popular corsage variety.

CATHERINE ZEIMET—This is the new White Baby Rambler. A continuous blooming Rose of great merit. Fine for bedding.

JESSIE—This new Baby Rambler is an ideal Rose for massing, bedding or for pot culture. The flowers, which are produced in huge clusters, are of a bright cherry-crimson color which does not fade.

MILLE. CECILE BRUNNER—Rosy pink on rich creamy white ground; a great bloomer; very satisfactory for bedding.

ERNA TESCHENDORFF—The much-heralded variety from Holland. Color, brilliant dark carmine-red, and is darker than Red Baby Rambler. Very free flowering.

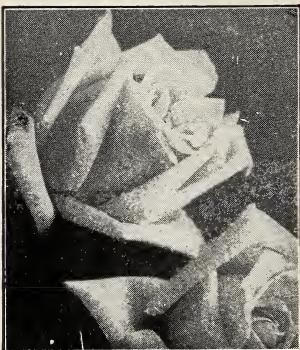
ELLEN POULSEN—Dark, brilliant pink; large, full; sweet-scented; vigorous bushy habit, most floriferous; very fine.

HARDY CLIMBING ROSES

CLIMBING AMERICAN BEAUTY—Flowers of large size, good form, of rich, red color passing to crimson. Very fragrant. Good foliage and absolutely hardy. 2-yr., 60c.

DOROTHY PERKINS—Beautiful shell-pink, which holds for a long time, shading to a lovely deep rose. Very sweetly scented, hardy and a strong grower. 2-yr., 50c.

DR. W. VAN FLEET—This new Rose has a great future. In flower and foliage it is all that could be expected of a climbing Rose. Blossoms extra large resembling the tender Hybrid Tea Roses in shape and size. Its strong stems are 12 to 18 inches long, making it valuable for cutting. In color a delicate flesh pink changing when full blown to a flesh white shade. 2-yr., 50c.



Dr. W. Van Fleet

EXCELSA or RED DOROTHY PERKINS—Intense crimson scarlet. Double flowers in brilliant clusters set in glossy green foliage. Extremely vigorous and one of the handsomest of all climbers. 2-yr., 60c.

PAUL'S SCARLET CLIMBER—An entirely new variety, combining vigorous growth, wonderful foliage and absolute hardiness, together with flowers almost as large as those produced on bush Roses; in color a brilliant scarlet which lasts well. 2-yr., 75c.

FLOWER OF FAIRFIELD (Everblooming Crimson Rambler)—Brilliant crimson. Flowers almost continually in brilliant clusters from early Summer until frost. 2-yr., 60c.

CRIMSON RAMBLER—One of the most popular of the climbers. A rapid grower and perfectly hardy; flowers in rich clusters of vivid crimson. One year plants will attain a height of 10 to 20 feet in a single season and the second year they will produce a marvelous profusion of their rich glowing crimson flowers. 2-yr., 60c.

TAUSENDSCHOEN (Thousand Beauties)—Varying in shade from a delicately flushed white to a deep pink or reddish crimson, in bright clusters, almost covering the handsome green foliage. A climbing Rose that comes to us from Germany. It gets its name from its many flowers and from their variation in coloring. 2-yr., 60c.

WHITE DOROTHY PERKINS—A pure white sport from Dorothy Perkins, with which it is identical in variety and habits. A valuable addition to the hardy climbing class. The plant is a strong, rampant grower, covering a large porch or trellis in a remarkably short time. 2-yr., 60c.

ROSE SPECIAL

One each of following:

- | | |
|----------------------|----------------------|
| 1 American Beauty | 1 Gruss An Teplitz |
| 1 Betty | 1 Mrs. John Laing |
| 1 Clio | 1 Ulrich Brunner |
| 1 Columbia | 1 Baby Tausendschoen |
| 1 Frau Karl Druschki | 1 Excella |

10 for \$5.85 while they last.

You cannot afford to be without roses at this price.



A Pleasing Evergreen Group

CONIFEROUS EVERGREENS

Evergreens are always in favor for landscape work, their different colored foliage making a strong background for the brilliant colors of Summer, but it is in Winter, when the Northern landscape is barren of color and foliage, and the beauty of the Southern greatly lessened, that they are most appreciated, the absence of other colors tending to bring out their beauty of form in a most striking manner.

Our Conifers are grown in the most careful and scientific manner. We transplant them several times before allowing them to go out to our customers, insuring a strong fibrous root growth. Trees that have not been several times transplanted and become acclimated to our climate are almost sure to die.

Caution. Do not buy cheap Evergreens. Unless they have been treated as above stated you will be disappointed with results.

Do not let the sun or wind strike the roots of Evergreens even for a few minutes; you will kill them if you do. Every Conifer offered in this catalog, unless otherwise stated, is taken from the field with the roots securely closed in a ball of earth and this bound on with a piece of burlap. The roots are never exposed. When you receive the plants, have hole ready, remove burlap (but not dirt), plant immediately, water thoroughly, but do not apply over foliage.

ABIES (The Firs)

3 ft., \$5.00; 5 ft., \$10.00.

Trees are generally pyramidal in shape and hardy everywhere. The needles are short and generally bright on the under side. They transplant kindly and should be more generally used. They are nearly all native of the northern country and more handsome in cultivation than in their native soil.

CONCOLOR (White Fir)—A very beautiful species with yellow bark on the young branches; leaves green, arranged in double rows; equal in color and beauty to the Colorado Blue Spruce.

DOUGLASI (Douglas Fir)—A cone-shaped tree of very light bluish green foliage, even lighter on under side. Very desirable.

ARBOR-VITAE

AMERICAN—One of the finest Evergreens for hedges. It grows rapidly and soon forms a most beautiful hedge; very dense. Of course it is never adapted to turn stock, but it forms a most desirable and ornamental screen to divide the lawn from other parts of the ground. 2 ft., \$3.00; 3 ft., \$5.00.

GOLDEN—A beautiful variety of Chinese Arbor-Vitae; compact and globular; color a lively yellowish green; not quite hardy in the North, should be planted in a shady situation, where it will give a brilliant touch of color like sunshine. 2 ft., \$3.00.

PYRAMIDALIS—An exceedingly beautiful, bright variety, resembling the Irish Juniper in form; foliage a deep green, color well retained in Winter; perfectly hardy. Should have a place in every collection. 2 ft., \$3.00; 3 ft., \$5.00.

COMPACTA—Foliage light green; habit dwarf and compact. Fine for small places. 2 ft., \$3.00.

PEABODY GOLDEN—Very beautiful globe shaped, attaining size of a bushel basket. 12-18 in., \$3.00.

TOM THUMB—Small compact, with feathery foliage. A beautiful ornament for small yard or cemetery lot or low hedge. 12-15 in., \$1.75; 15-18 in., \$2.00; 18-24 in., \$3.00.

GLOBOSA—Forms a dense, low, globe shape. A beautiful Evergreen. Particularly fine for formal plantings. 2 ft., \$3.00.

HOVEY'S GOLDEN—A small tree, globular in form; foliage light green with a golden tinge and very compact; hardy. 2 ft., \$4.00.



JUNIPERUS (Junipers of Cedars)

This family embraces many different forms and characters. They are pyramidal, erect and spreading; foliage varying in color from light to dark green, to gold and blue. They possess the vigor to establish themselves in any type of soil and will thrive in clay, stony and poorer soils where some Evergreens may fail. Seem to withstand the soot and dust of our cities better than the general Evergreen family. They make a sparse root system requiring extra care in planting and until established. The needles are short and slightly prickly.

VIRGINIANA (Red Cedar)—A well known native tree; varies much in habit and color of foliage; very attractive in Winter when the golden bronze of the young growth contrasts with the dark green of the older 3 ft., \$5.00; 5 ft., \$8.00.

GLAUCA (Grey Cedar)—Similar to Red Cedar in form and of a soft gray-blue-green color; closely columnar. 3 ft., \$5.00.

HIBERNICA (Irish Juniper)—Of slender columnar habit with glaucous green foliage. Useful for formal plantings. 2 ft., \$3.00; 3 ft., \$5.00

PFITZERIANA (Pfitzer Juniper)—A graceful, broad, pyramidal Evergreen with sweeping fronds of gray-green foliage, making in time a distinctive, beautiful tree 3 ft., \$5.00.

PROCUMBENS (Trailing Juniper)—One of the most attractive of the low-growing Junipers, with its long trailing branches covered with numerous short branchlets of glaucous green foliage; admirably adapted for rocky planting or edging about foundation of house or corners. 2 ft., \$5.00.

SABINA (Savin Juniper)—Especially suitable for hillside planting or among rocks; like a prostrate shrub in habit, and useful for all low planting. The foliage is deep green and unchanging in its color. 1 ft., \$2.50; 2 ft., \$5.00.

PICEA (The Spruces)

These are all easy to transplant, and the most popular of the Evergreen family. They are perfectly hardy and grow rapidly and are pyramidal in shape, used for specimens, in groups or for foundation adornment, and as screens, wind-breaks or hedges they are equally appropriate. Needles are uniformly short. We have a fine stock of sheared plants that will please every purchaser.

COLORADO BLUE (*Picea pungens glauca*)—This species has been tested at various points on the prairies of the West and Northwest with perfect success, enduring a temperature of 30 degrees below zero in exposed situations, entirely uninjured. This is not only one of the hardiest, but the most beautiful in color and outline; foliage of a rich blue or sage color; it is a valuable acquisition. 2 ft., \$6.00; 3 ft., \$10.00.



Colorado Spruce

HEMLOCK (*Tsuga canadensis*)—An elegant pyramidal tree, with drooping branches and delicate dark foliage, like that of the yew. Distinct from all other trees. It is a beautiful lawn tree, and makes a highly ornamental hedge. 2 ft., \$8.00.

NORWAY—A lofty, elegant tree of perfect pyramidal habit, remarkably elegant and rich, and as it gets age, has fine, graceful, pendulous branches; it is exceedingly picturesque and beautiful. Very popular, and deservedly so. One of the best Evergreens for hedges and windbreaks. 1 ft., \$1.00; 2 ft. \$2.00; 3 ft., \$3.00; 4 ft \$6.00; 5 ft., \$7.00.

PINUS (Pines)

Pines seem to grow anywhere, high or low ground, exposed or shaded position, in rich or poor soils, they are at home. After established they grow rapidly and when given space quickly raise their heads and spread their great branches, soon making a wonderful tree. The needles are invariably long and with age droop gracefully. Plant any kind and be assured of getting quick results.

AUSTRIAN OR BLACK (*Pinus austriaca*)—A remarkably robust, hardy, spreading tree, leaves long, stiff and dark green; growth rapid; valuable for this country. 2 ft., \$3.00.

SCOTCH (*Pinus sylvestris*)—A fine, robust, rapidly growing tree, with stout, erect shoots and silver green foliage. 2 ft., \$3.00.

WHITE (*Pinus Strobus*)—The most ornamental of all native Pines; foliage light, delicate or silvery green 2 ft., \$3.00.

MUGHO (*P. Mugho*)—This is an excellent dwarf Pine, being globe shaped and erect branching when the new growth which seems like miniature candles completely covers the bush. 1½ to 2 ft., \$4.00; 2 to 3 ft., \$8.00.

RETINISPORA

FILIFERA (Thread-branched *Retinispora*)—Of unique and showy habit, always noticeable. The leading shoot grows upright, the branches are nearly horizontal, with long, drooping, tasseled ends; pyramidal in outline, bright green. 2 ft., \$5.00.

PISIFERA (Pea-fruited *Retinispora*)—Erect branches, pendulous at the tips; foliage feathery, light green, glaucous beneath. 2 ft., \$5.00.

PLUMOSA (Green *Retinispora*)—Densely conical, with fern-like leaves of bright green, carried on erect, plumy branches. 2 ft., \$6.00.

PLUMOSA AUREA (Golden *Retinispora*)—One of the few really golden Evergreens. The color of the young growth contrasts strongly with the darker shade of the older foliage. Striking and useful in many ways. 2 ft., \$6.00.

EXTRA SPECIALS

We have a surplus of White Pine, Norway Spruce, and American Arbor-Vitae in 12 to 18 in. grade. Extra special at 60c each. \$55.00 per 100. Now is the time to put in that hedge.

Landscape Your Home



Bargains!! Bargains!! Bargains!!

ADVERTISING SPECIAL

Hardy Northern Grown, True to Name

For the purpose of introducing our landscape service more widely we are offering a limited number of settings in a selected variety of shrubs to give a pleasing effect in color harmony.

24 Shrubs for \$10.00

- 2 Rhodotyphos, 2-3 ft
- 2 Hydrangea P. G., 2-3 ft.
- 2 Buddleia, 2-3 ft.
- 3 Red Snowberry, 3-4 ft.
- 3 White Snowberry, 3-4 ft.
- 2 Philadelphus Lemonine, 2-3 ft.
- 6 Spirea Van Houttei, 3-4 ft.
- 2 Barberry Thungergi, 10-12 in.
- 2 Tartarian Rubra, 3-4 ft.

Above planting suitable for any home, and will be sent packed, charges paid to your door.

Do you enjoy nature's beauty?

"We go through this world only once, why not leave it a little more beautiful for those who come after us?"

From

THE KRIDER NURSERIES INC.
Middlebury, Indiana