

PL. XIV

圖
版
一
四



密明虫 鉢子菜 笹雪
(照參頁四六一)

PL. XV

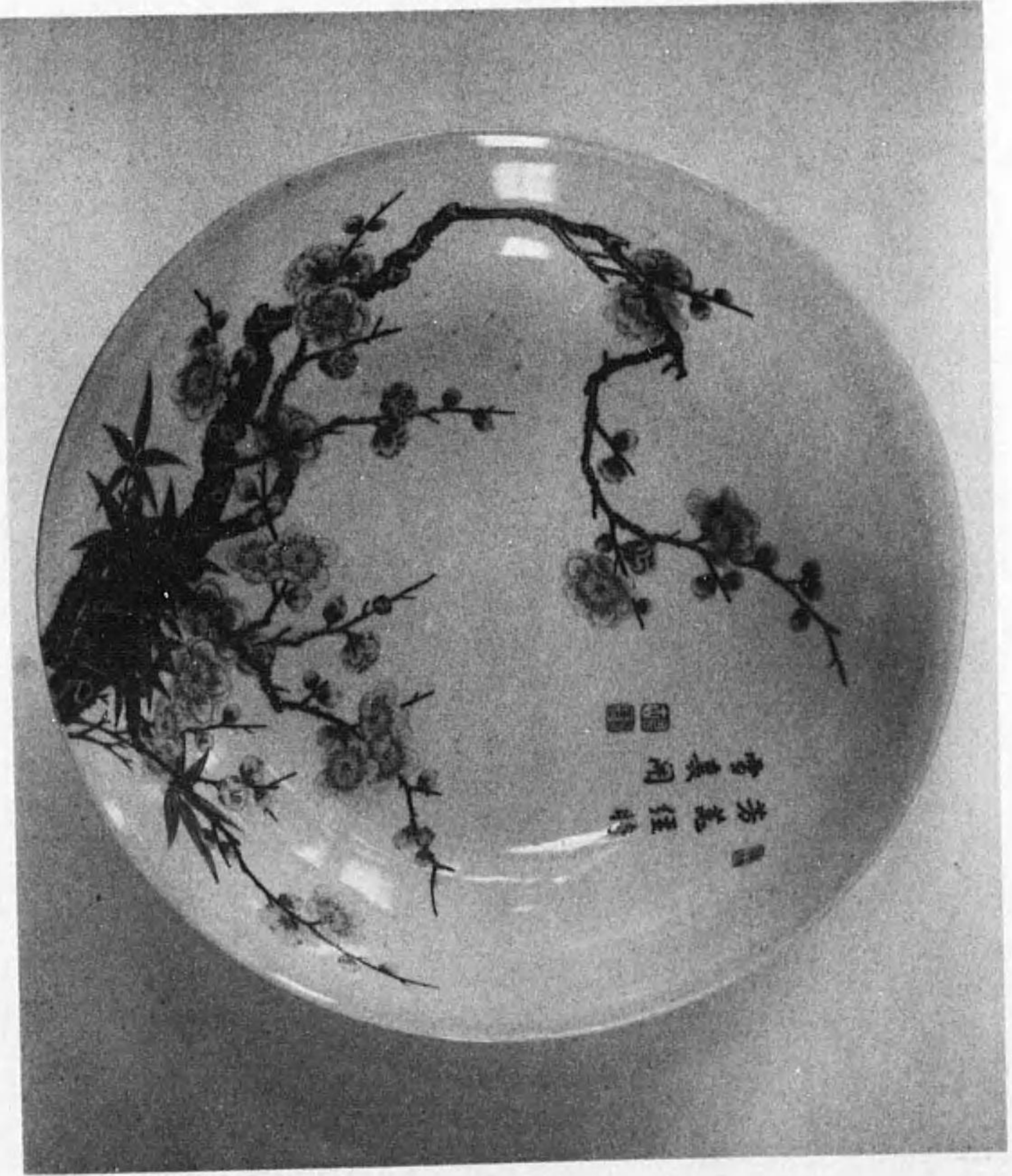
圖
版
一
五



三島寫水指萬古窯
(照參頁五八一)

PL. XVI

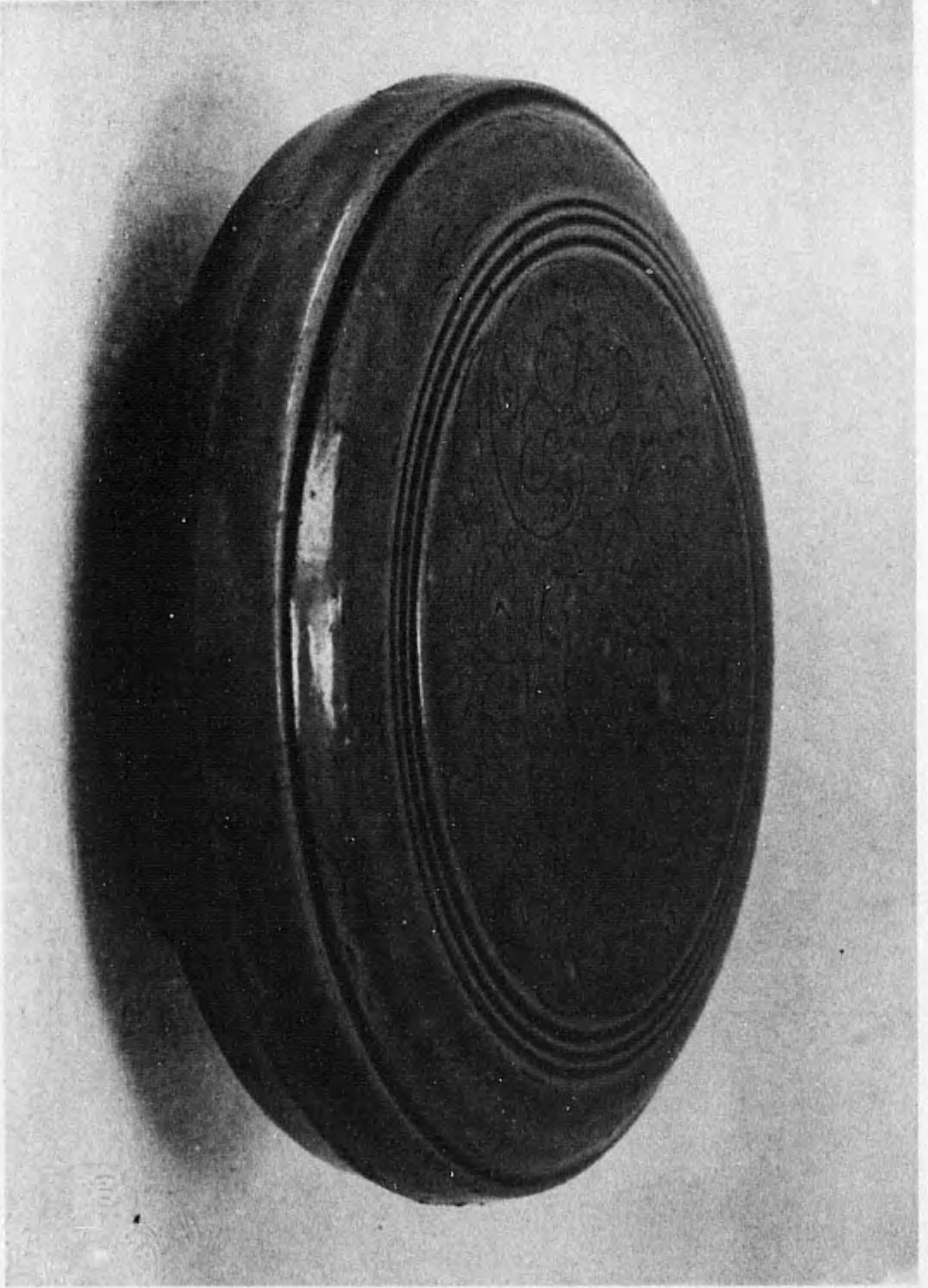
圖
版
一
六



製 那 女 盤 彩 粉
(照參頁九一二)

PL. XVII

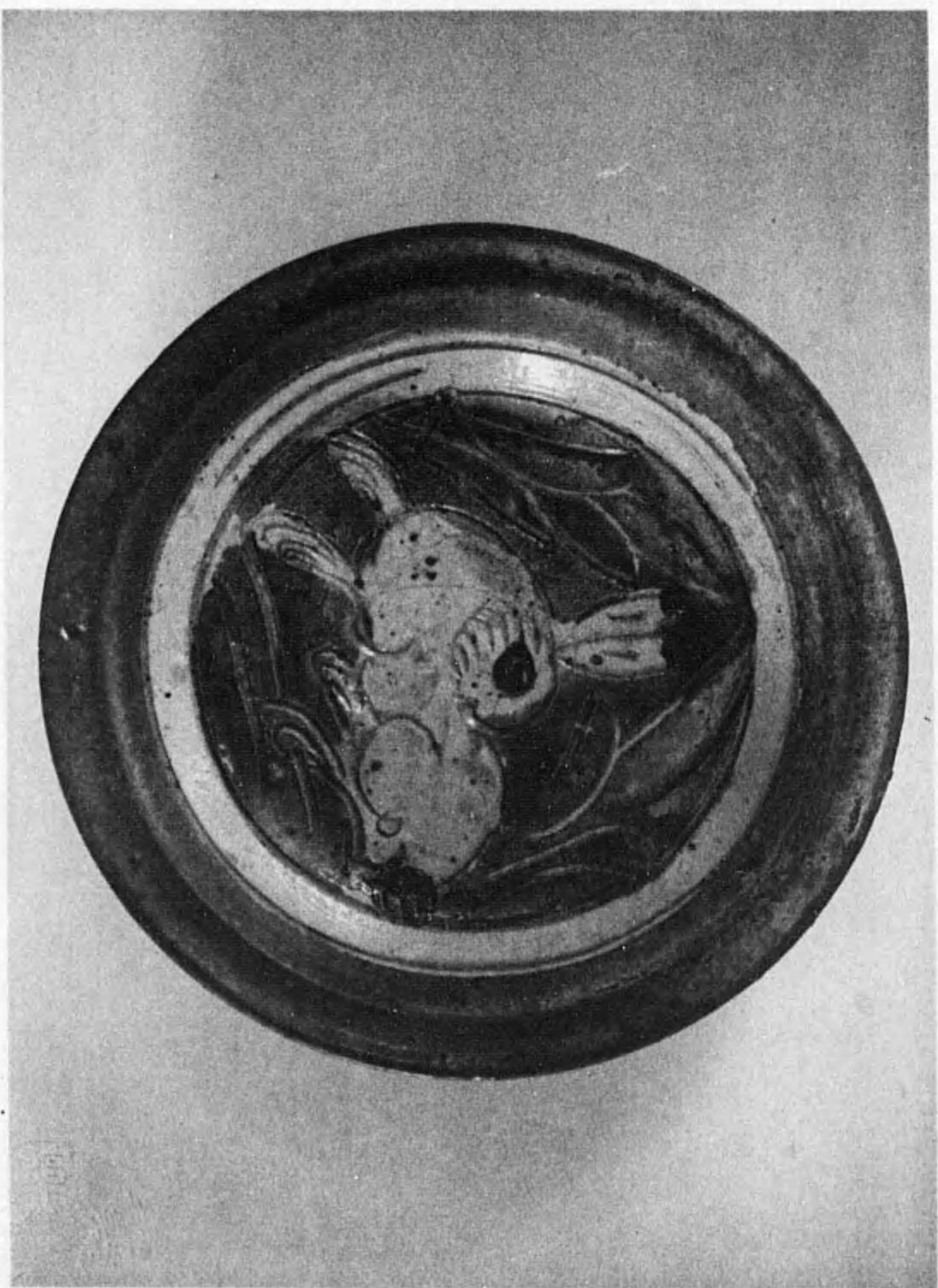
圖
版
一
七



密州越
子盒花剔磁青
(照參頁〇二二)

PL. XVIII

圖
版
一
八



製那文 碟文兔花劃彩三
(照參頁七二二)

PL. XIX

圖
版
一
九

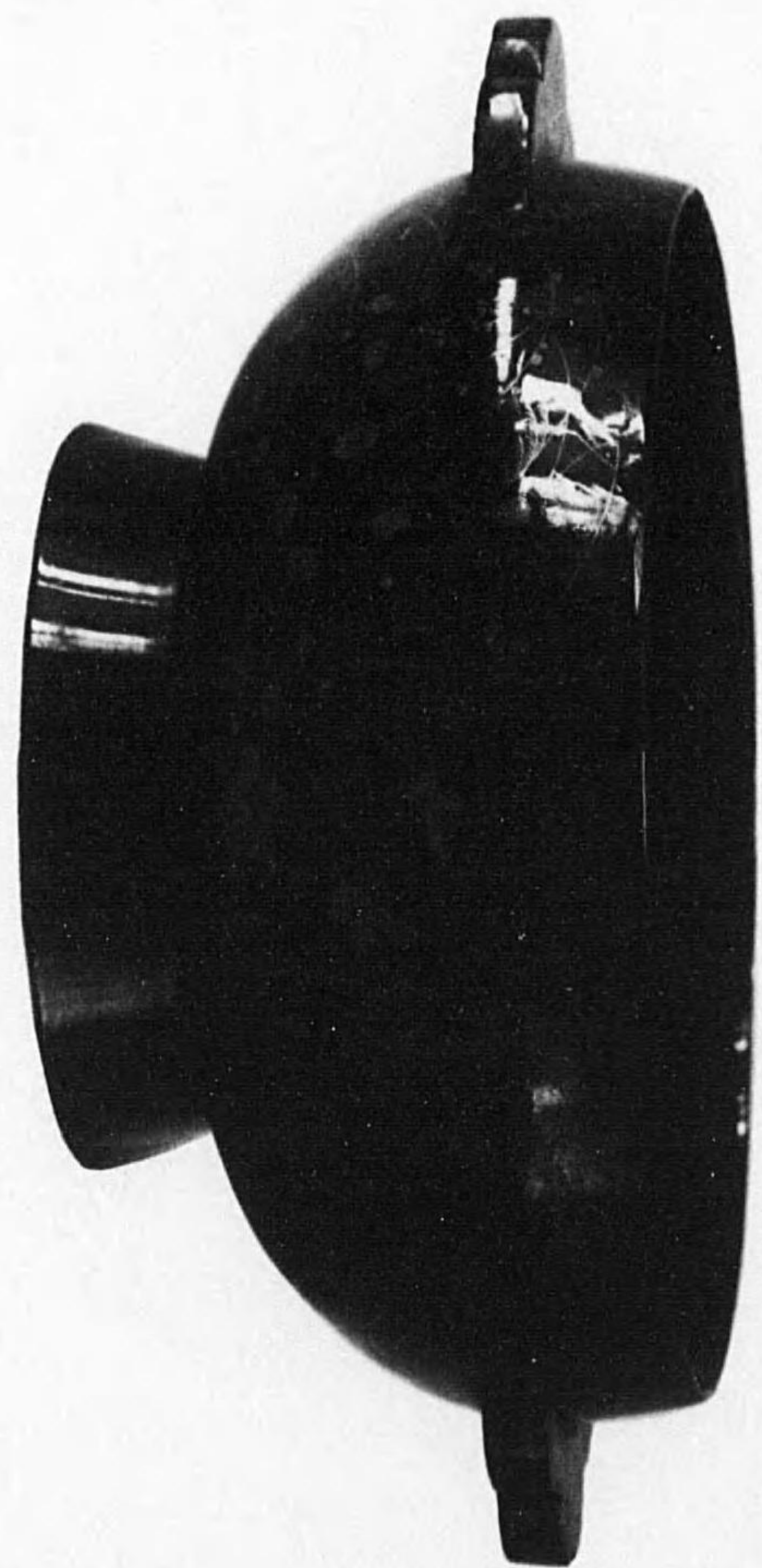


圖
版
一
九
照
參
頁
六
八
一

PL. XX

圖
版
二
〇



横飯繪時鳥小に櫻
(照參頁七六—)

PL. XXI

圖
版
二
一



傳繪狀行薩善基行寶國
(照參頁七八二)

PL. XXII

圖
版
二
二



像音觀面一十寶國
(照參頁八八二)

PL. XXIII

圖
版
二
三



像 天 門 沙 毘 寶國
(照參頁九八二)

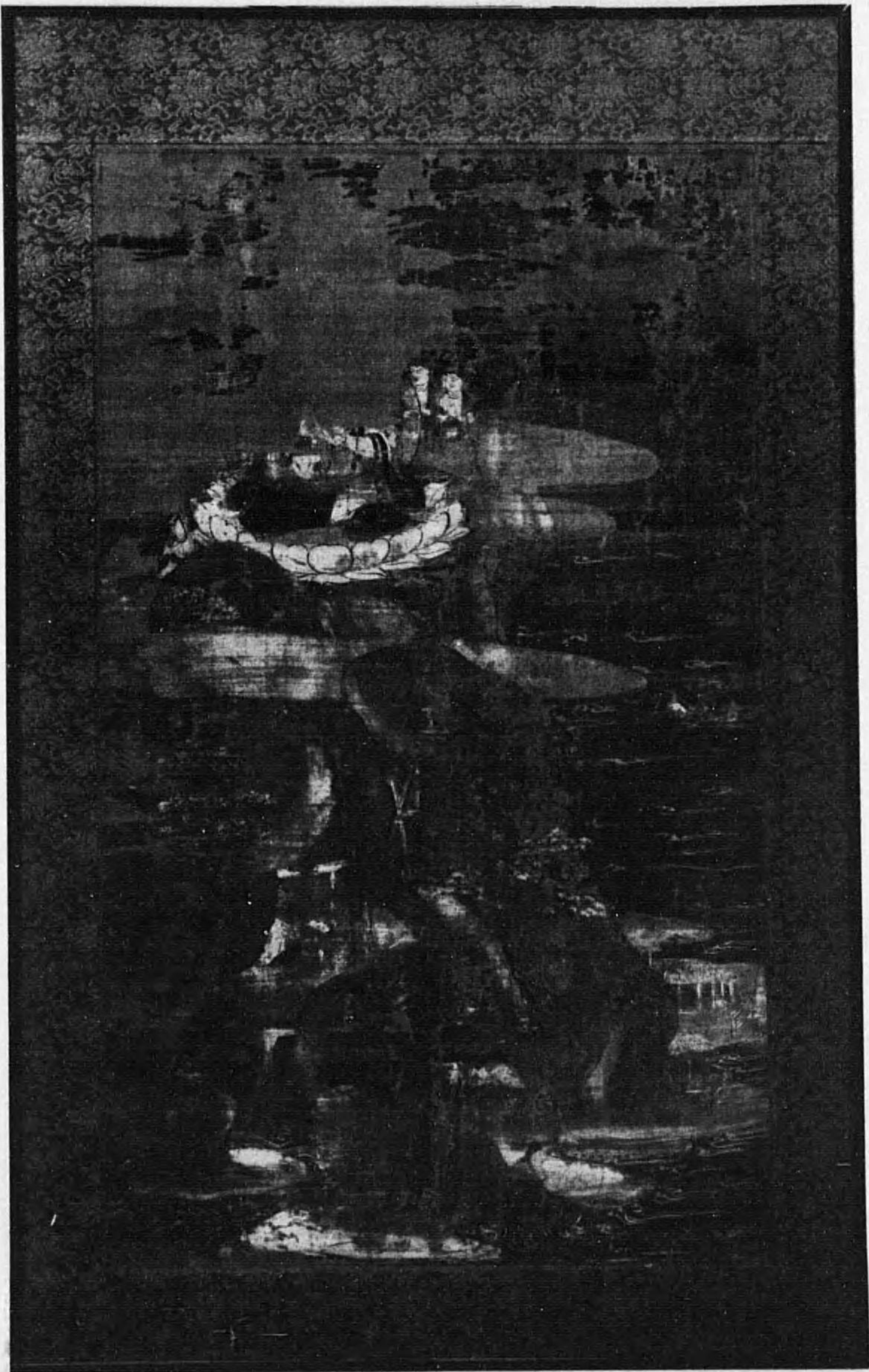
PL. XXVI

圖

版

二

四



繪所五十五嚴華
(照參頁七八二)

PL. XXV

圖
版
二
五



國寶文珠菩薩像
(照參頁〇九二)

ANNUAL REPORT
OF THE
IMPERIAL HOUSEHOLD MUSEUMS
TOKYO & NARA
FOR THE YEAR
1937

IMPERIAL HOUSEHOLD MUSEUM
TOKYO, JAPAN.

CONTENTS

GENERAL—

1. A Brief Report for 1937..... 1
2. Visit of the Empress Dowager..... 2
3. Changes in the Museum Regulations..... 2
4. Changes in the Staff..... 5

IMPERIAL HOUSEHOLD MUSEUM, TOKYO—

A. Accessions and Loans :

5. Aquisitions 9
 - (a) Historical Department
 - Purchase
 - Donation
 - Succession
 - (b) Fine Art Department
 - Purchase
 - Donation
 - Succession
 - (c) Applied Art Department
 - Purchase
 - Donation
6. Loan Exhibits 229

7. Return of Loan Exhibits to Owners.....	253
8. Accession to the Museum Library.....	257
B. Installation of Exhibits and Number of Visitors :	
9. Display of Exhibits.....	263
10. Visitors	264
11. Objects loaned out.....	265
C. Activities :	
12. Distribution of Money among Temples and Shrines exhibiting	270
13. Publications	270
14. Repair of National Treasures.....	272
15. Field Inspection and Tours.....	272
16. Curators' Meetings.....	277
IMPERIAL HOUSEHOLD MUSEUM, NARA—	
A. Accessions and Loans :	
17. Acquisitions.....	279
18. Loans from Temples and Shrines and their Return	285
19. Private Loans and their Return	291
20. Accessions to the Museum Library.....	294
B. Installation of Exhibits and Number of Visitors :	
21. Display of Exhibits.....	296
22. Special Exhibitions.....	298

Exhibition of the Art of the Fujiwara Period	
23. Visitors	303
24. Exhibits: Temporal Return, etc.....	304
C. Activities :	
25. Distribution of Money among Temples and Shrines Exhibiting	308
26. Lectur s	309
27. A Series of Gallery Talks.....	309
28. Buddhistic Ceremonies for Buddhistic Sculptures and Paintings exhibited.....	310
29. Publications.....	311
30. Repairs of National Treasures.....	312
31. Field Inspection and Tours.....	312
32. A new Warehouse for Exhibits.....	314

THE SHŌSŌ-IN AND SHŌGO-ZŌ

APPENDICE

(a) Rules governing Visitors.....	323
(b) Rules governing Special Inspection of Objects	324
(c) Rules governing Exhibits.....	330
(d) Classification of Objects in the Museum.....	333
(e) The Museum Staff (April 1, 1938).....	334

LIST OF PLATES

(Some of the Principal Accessions and Loans in the Year 1937)

IMPERIAL HOUSEHOLD MUSEUM, TOKYO—

- I. **CYLINDRICAL CLAY OBJECTS.** Left: height, 478 mm.; across mouth, 300 mm. Right: height, 568 mm.; across mouth, 380 mm. Place of discovery, Tokyo-fu.
- II. **HANIWA.** Excavated in Gumma Prefecture. (1) Shield. Height, 888 mm. (2) Quiver. Height, 926 mm. (3) Quiver. Height, 922 mm. (4) Long-handled Fan. Height, 985 mm.
- III. **HANIWA.** Excavated in nara prefecture.
(1) House. Height, 1.135 m. (2) Shield. Height, 1.152 m.
- IV. **SUTRA CYLINDER.** White glazed ceramic.
With lid. Excavated in Ehime Prefecture. Height, 262 mm.
- V. **DAGGERS.** (1) Signed "Takahira." Carving on either side of the blade. Length, 333 mm. (2) Signed "Hankei." Carving on either side of the blade. Length, 275 mm.
- VI. **EMBROIDERED DRESS.** Design of paulownia, phoenix, etc. Height, 1.333 m.
- VII. **BRONZE WEAPONS.** (1) Dagger. Length, 315 mm.
(2) Handle in dragon design. Length, 235 mm.
- VIII. **CROSSBAR.** Two views. Excavated from an old tomb in Heian Nando, Chosen: Length, 605 mm.

IX. **SILVER MASK.** Place of discovery, Manchoukuo. Height, 295 mm.; width, 205 mm.

X. **SIX-PANELLED SCREEN WITH YUZEN DESIGN.**

Genre subject. Two panels reproduced. Height, 590 mm. Entire length, 2.697 m.

XI. **LAOTSE.** Drawn on paper in sumi. By Kimura Nagamitsu. Height, 1.109 m.

XII. **ILLUSTRATED SCROLL** (Takekurabe-Sōshi).

Painted on paper in colour. Height, 327 mm.; entire length, 7.109 m. Detail reproduced.

XIII. **PORTRAIT OF OSHIMA SHINWO.** Painted on silk in colour. By Tanomura Chikuden (1777—1835). Height, 897 mm.

XIV. **CERAMIC BOWL WITH DESIGN OF BAMBOO IN SNOW.** Mushiage kiln. Edo period (1603—1867). Height, 170 mm.

XV. **WATER JAR.** Banko kiln; after Mishima style. Edo period. Height, 147 mm.

XVI. **PORCELAIN PLATE.** Polychrome. Design of plum blossoms and bamboo. Ch'ing dynasty, China (1644—1912). Diameter, 173 mm.

XVII. **CELADON BOWL WITH LID.** With incised design. Across mouth, 122 mm. Sung dynasty, China (960—1279).

- XVIII. **CERAMIC DISH.** With rabbit design. Width, 124 mm.
Yüan dynasty, China.
- XIX. **LACQUERED TUB WITH HANDLES.** Decorated
with autumnal grass design. Height, 135 mm.; across mouth,
265 mm. Momoyama period (1573-1602).
- XX. **LACQUERED RICE RECEPTACLE.** Decorated with
flowers and bird design. Height, 136 mm.; across mouth, 297
mm. Early Edo period (1603-1680).
- XXI. **LIFE OF GYOGI BOSATSU.** Painted on silk in
colour. "National Treasure," owned by Iyehara-dera temple in
Osaka. One of the triptych is reproduced. Height, 1.657 m.
- XXII. **ELEVEN-FACED KWANNON.** Sculpture in wood,
coloured. Height of figure, 1.969 m. "National Treasure" owned
by Shin Yakushiji temple in Nara.
- XXIII. **BISHAMON-TEN.** Sculpture in wood. "National Treas-
ure" owned by Dōjōji temple in Wakayama Prefecture. Height,
1.3 m.
- XXIV. **KEGON GOJUGOSHO-YE.** Painted on silk in colour.
Owned by the Todōji temple in Nara. Height, 754 mm.
- XXV. **MONJU BOSATSU.** Sculpture in wood. "National
Treasure" owned by the Kofukuji temple in Nara. Height of
sitting image, 969 mm.

昭和十三年六月二十日印刷
昭和十三年六月二十四日發行

【定價金八拾錢】

帝 室 博 物 館

印刷者 東京市麴町區麴町五丁目
杉 田 彌 太 郎

印刷所 東京市麴町區麴町五丁目
杉 田 屋 印 刷 所

145
177

ANNUAL REPORT
OF THE
IMPERIAL HOUSEHOLD MUSEUMS
TOKYO & NARA
FOR THE YEAR
1937

IMPERIAL HOUSEHOLD MUSEUM
TOKYO, JAPAN.

14.5
177

終

