

Madagascar | Tropical Cyclone BATSIRAI



IMPACT IN MADAGASCAR
Source: DG ECHO, BNGRC

- 21** Fatalities
- 62,096** Displaced people
- 72,275** Affected people
- 211** Affected schools
- 9,271** Affected students

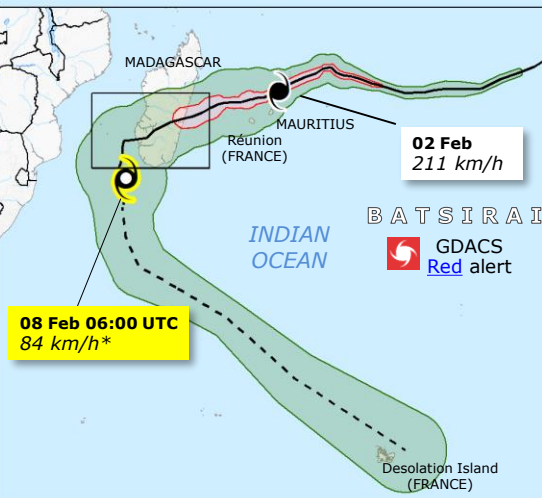
EU RESPONSE
Situation as of 8 February 16:00 CET

TC BATSIRAI made landfall on the eastern coast of Madagascar on 5 February 2022.

An EU regional rapid response coordinator has been deployed.

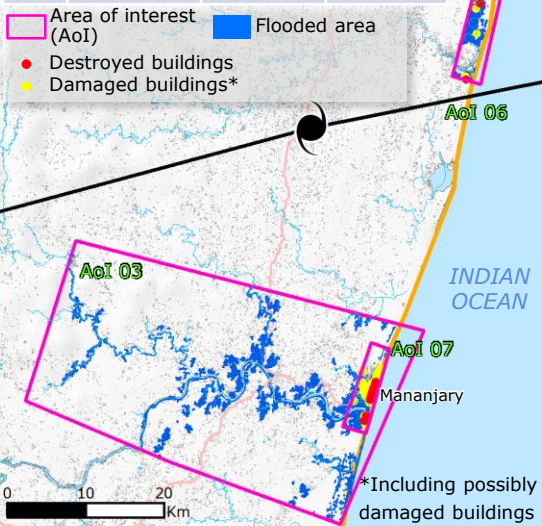
On 9 and 10 February a team of experts dedicated to humanitarian response: ECHO technical experts, humanitarian organisations staff, and 13 UCPM experts (FR, SE, FI, IT, NL) with an ERCC liaison officer are expected to arrive in Madagascar through 2 EU Humanitarian Airbridge (HAB) flights organised from Nairobi.

UCPM accepted offers:
FR - Aerial Drone module and Water Purification module.
DE - Water Purification module.



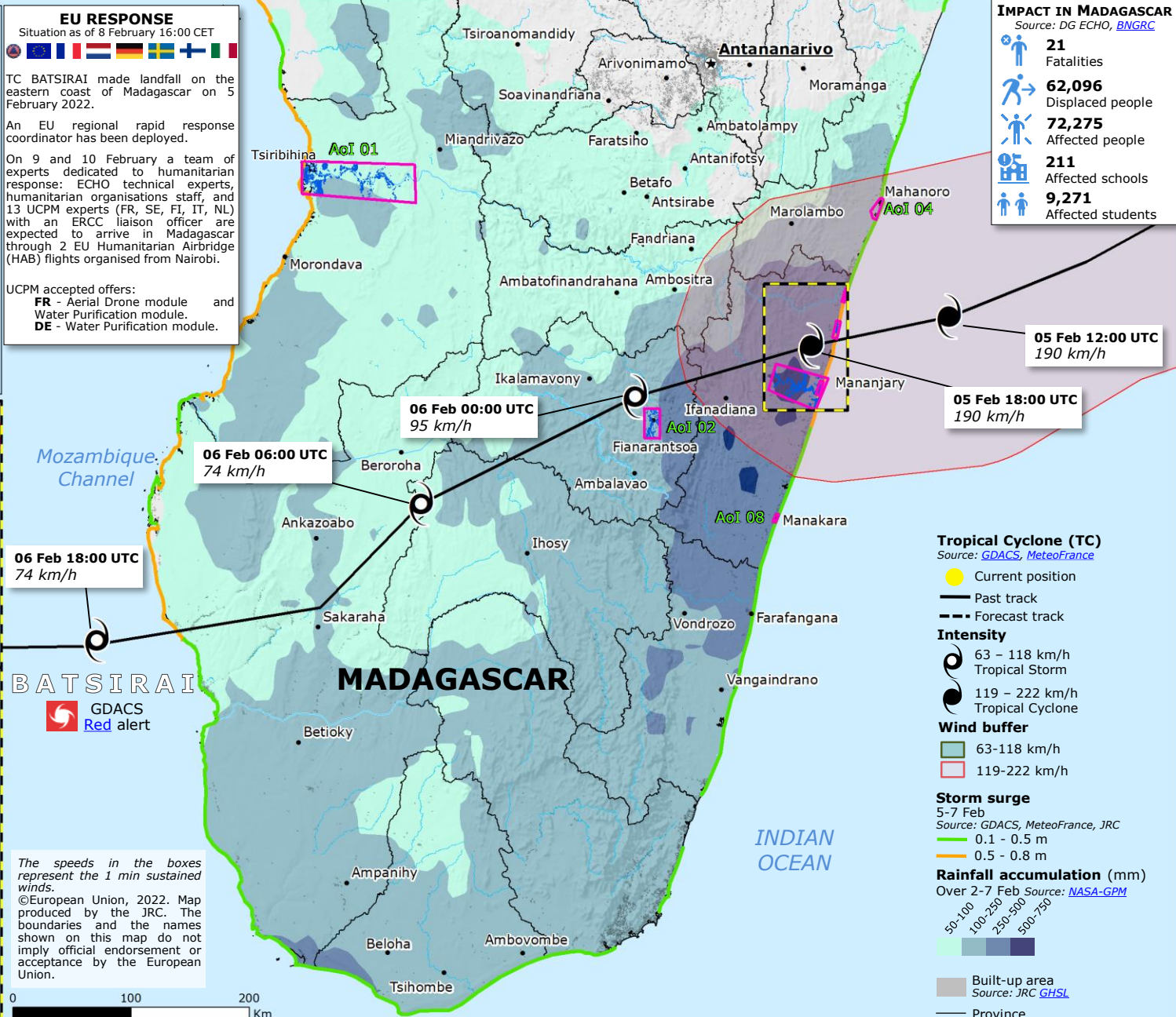
Copernicus EMSR564 Activation

AoI	ESTIMATED POPULATION	ESTIMATED AFFECTED POPULATION	DESTROYED/DAMAGED BUILDINGS*
03	81,207	18,543	no data
05	29,915	3,727	1,890
06	33,929	607	43
07	46,623	10,287	3,983



The speeds in the boxes represent the 1 min sustained winds.

©European Union, 2022. Map produced by the JRC. The boundaries and the names shown on this map do not imply official endorsement or acceptance by the European Union.



Tropical Cyclone (TC)
Source: GDACS, MeteoFrance

- Current position
- Past track
- Forecast track

Intensity

- 63 – 118 km/h Tropical Storm
- 119 – 222 km/h Tropical Cyclone

Wind buffer

- 63-118 km/h
- 119-222 km/h

Storm surge
5-7 Feb
Source: GDACS, MeteoFrance, JRC

- 0.1 - 0.5 m
- 0.5 - 0.8 m

Rainfall accumulation (mm)
Over 2-7 Feb Source: NASA-GPM

- 50-100
- 100-250
- 250-500
- 500-750

Built-up area Source: JRC GHSL

Province