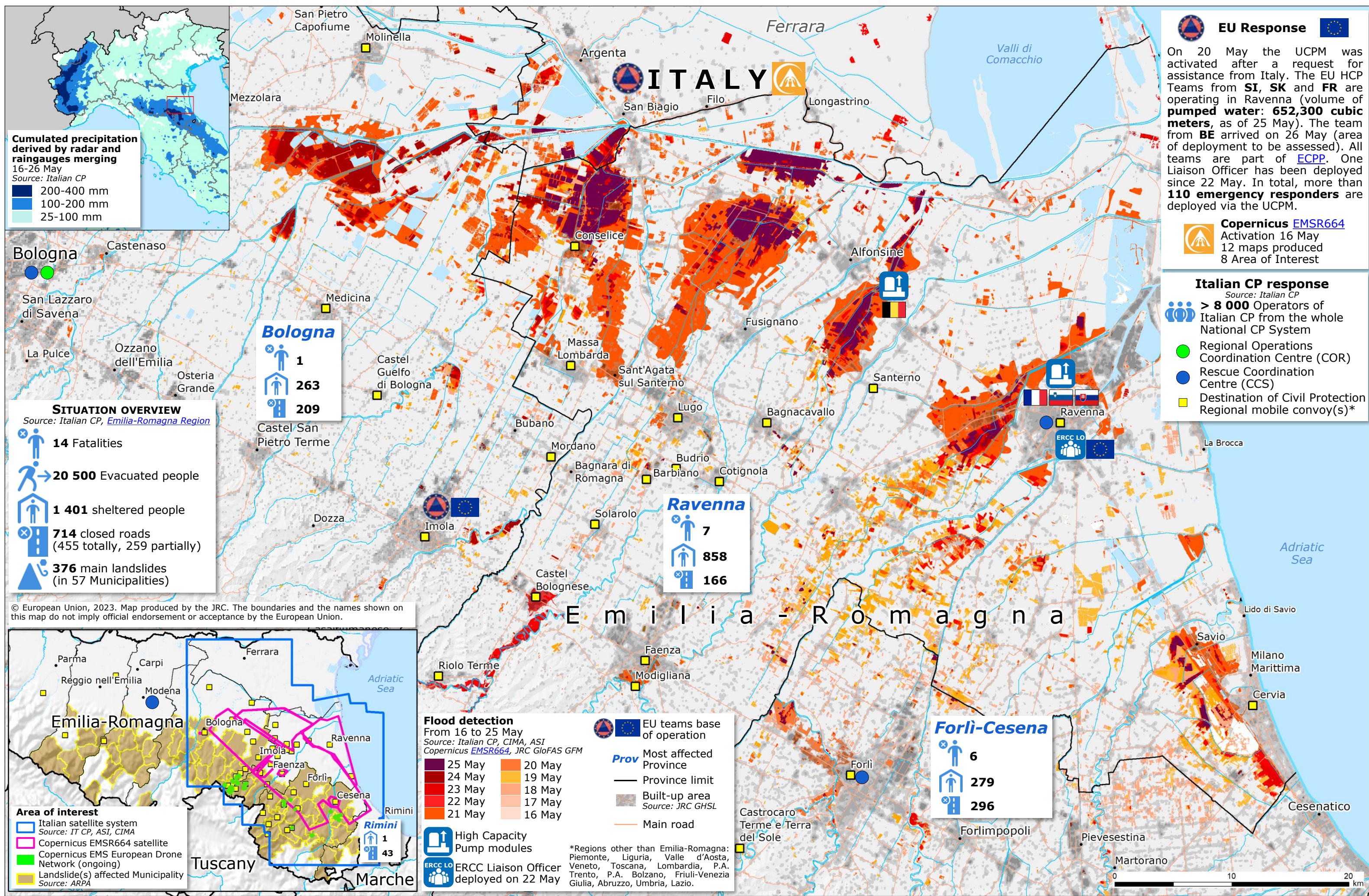


Italy | Floods and landslides – EU response



EU Response

On 20 May the UCPM was activated after a request for assistance from Italy. The EU HCP Teams from **SI**, **SK** and **FR** are operating in Ravenna (volume of pumped water: **652,300 cubic meters**, as of 25 May). The team from **BE** arrived on 26 May (area of deployment to be assessed). All teams are part of **ECPP**. One Liaison Officer has been deployed since 22 May. In total, more than **110 emergency responders** are deployed via the UCPM.

Copernicus EMSR664
 Activation 16 May
 12 maps produced
 8 Area of Interest

Italian CP response
 Source: Italian CP

> 8 000 Operators of Italian CP from the whole National CP System

- Regional Operations Coordination Centre (COR)
- Rescue Coordination Centre (CCS)
- Destination of Civil Protection Regional mobile convoy(s)*

Cumulated precipitation derived by radar and raingauges merging
 16-26 May
 Source: Italian CP

- 200-400 mm
- 100-200 mm
- 25-100 mm

SITUATION OVERVIEW
 Source: Italian CP, Emilia-Romagna Region

- 14 Fatalities
- 20 500 Evacuated people
- 1 401 sheltered people
- 714 closed roads (455 totally, 259 partially)
- 376 main landslides (in 57 Municipalities)

Bologna

- 1
- 263
- 209

Ravenna

- 7
- 858
- 166

Forlì-Cesena

- 6
- 279
- 296

Area of interest

- Italian satellite system (Source: IT CP, ASI, CIMA)
- Copernicus EMSR664 satellite
- Copernicus EMS European Drone Network (ongoing)
- Landslide(s) affected Municipality (Source: ARPA)

Flood detection
 From 16 to 25 May
 Source: Italian CP, CIMA, ASI
 Copernicus EMSR664, JRC GloFAS GFM

25 May	20 May
24 May	19 May
23 May	18 May
22 May	17 May
21 May	16 May

EU teams base of operation
 Most affected Province
 Province limit
 Built-up area (Source: JRC GHSL)
 Main road

High Capacity Pump modules
 ERCC Liaison Officer deployed on 22 May

*Regions other than Emilia-Romagna: Piemonte, Liguria, Valle d'Aosta, Veneto, Toscana, Lombardia, P.A. Trento, P.A. Bolzano, Friuli-Venezia Giulia, Abruzzo, Umbria, Lazio.

© European Union, 2023. Map produced by the JRC. The boundaries and the names shown on this map do not imply official endorsement or acceptance by the European Union.

