

# January 2022 Wikimedia movement metrics



**WIKIMEDIA**  
FOUNDATION

# Key Metrics Dashboard URL change

readers

editors

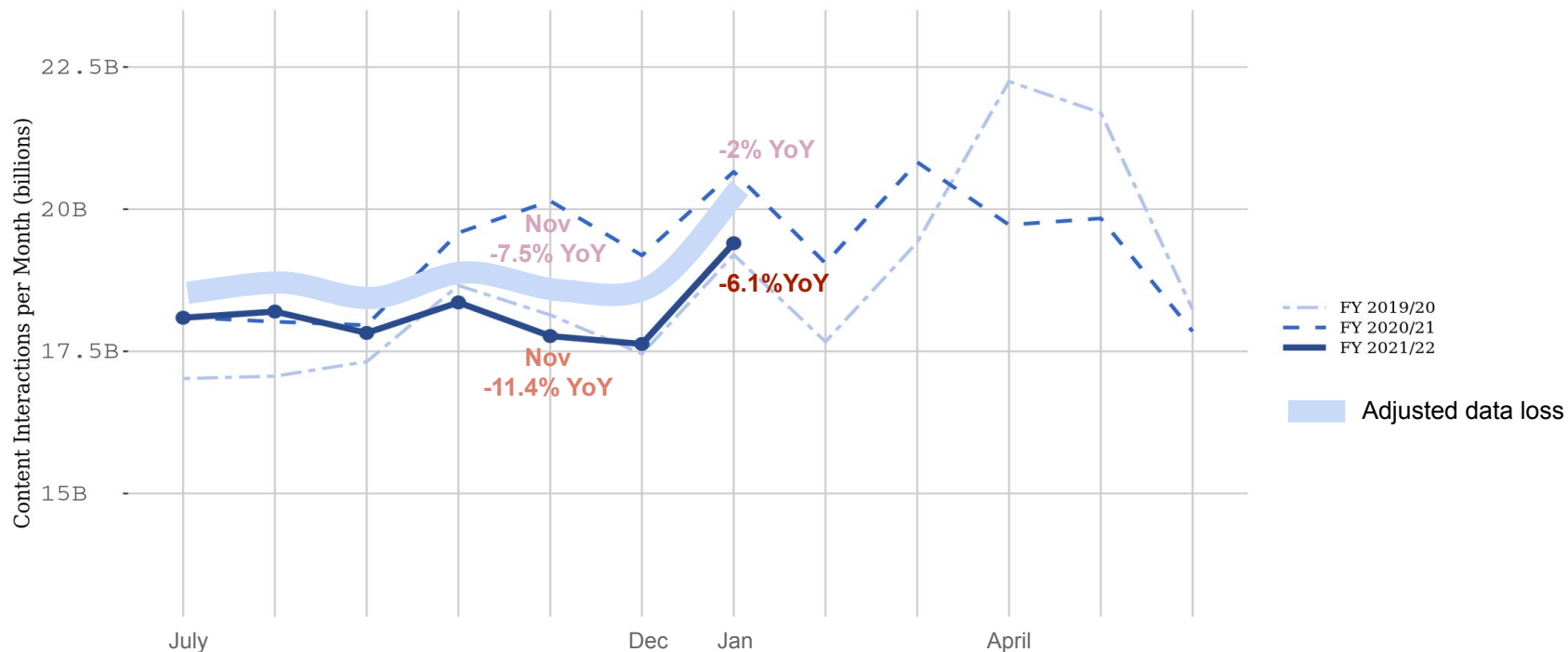
content



**WIKIMEDIA**  
FOUNDATION

# January Metrics Summary: Content Interactions

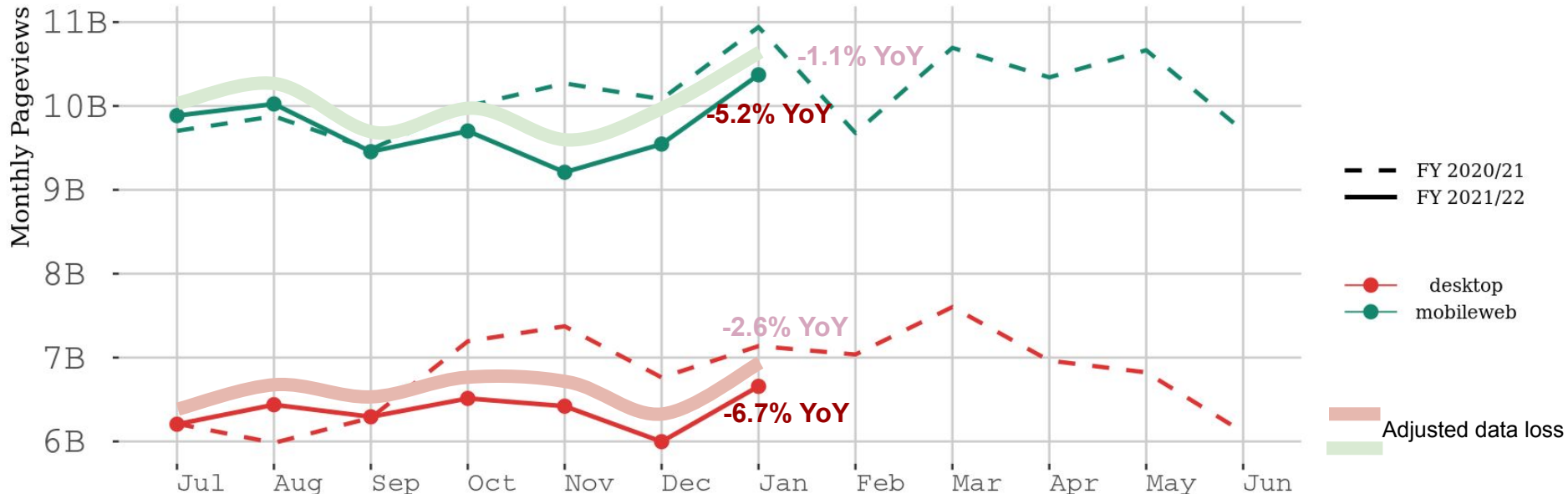
Content interactions : 19.4B



# January Metrics Summary

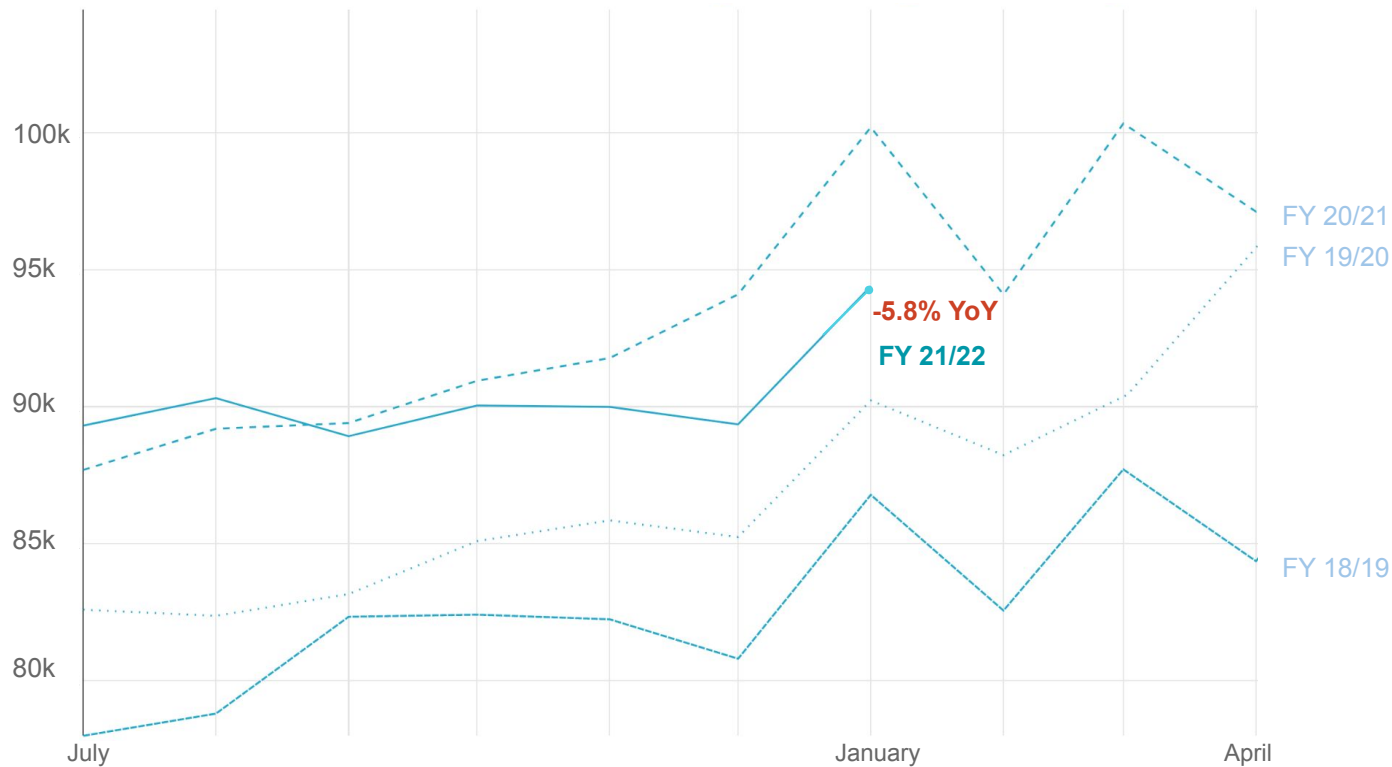
Desktop pageviews (6.6B) Mobile web pageviews (10.4B)

## Desktop and Mobile Web pageviews



# January Metrics Summary for Product People Managers

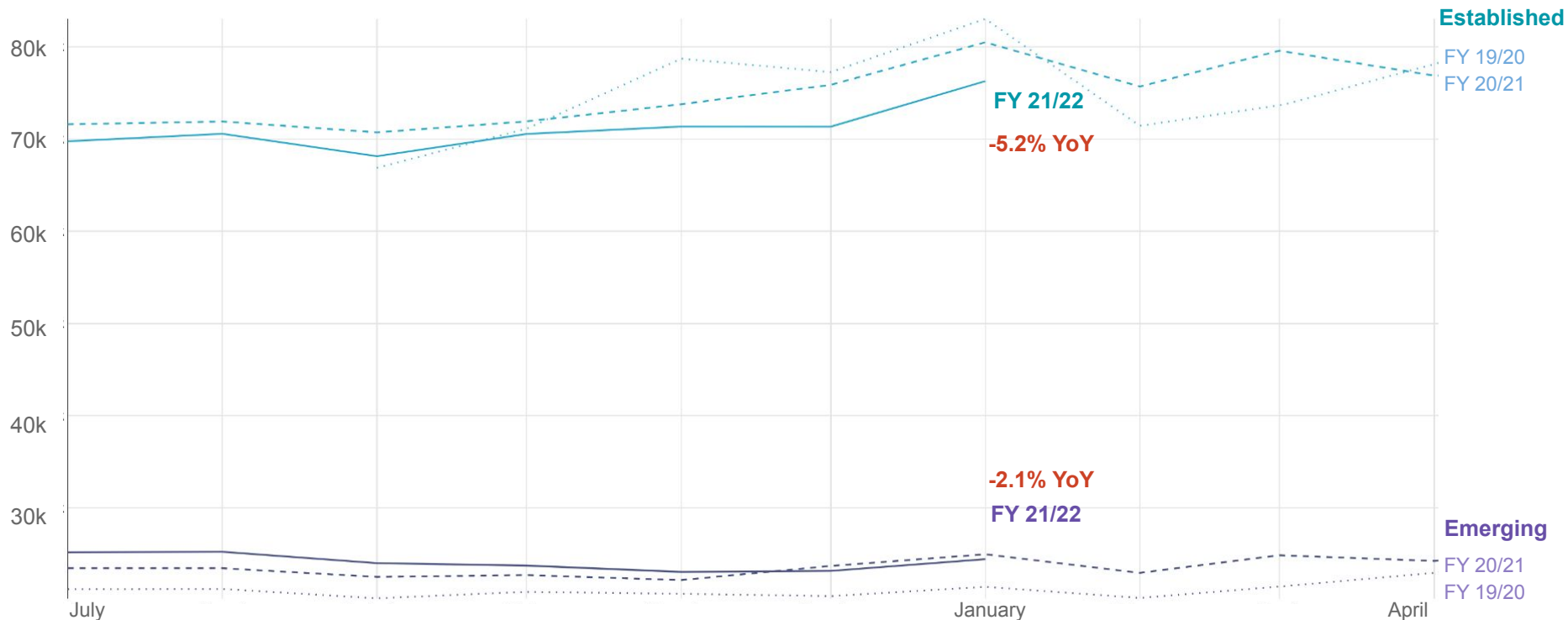
Active Editors



Explore [Content Metrics](#), [Readers Metrics](#) and [Editors Metrics](#) in Superset. Monthly aggregates are also available in Sheets: [Editors & Content](#) and [Readers](#). For metric definitions, see the [Product data glossary](#). For questions: [#product-analytics](#) or [email](#)

# January Metrics Summary for Product People Managers

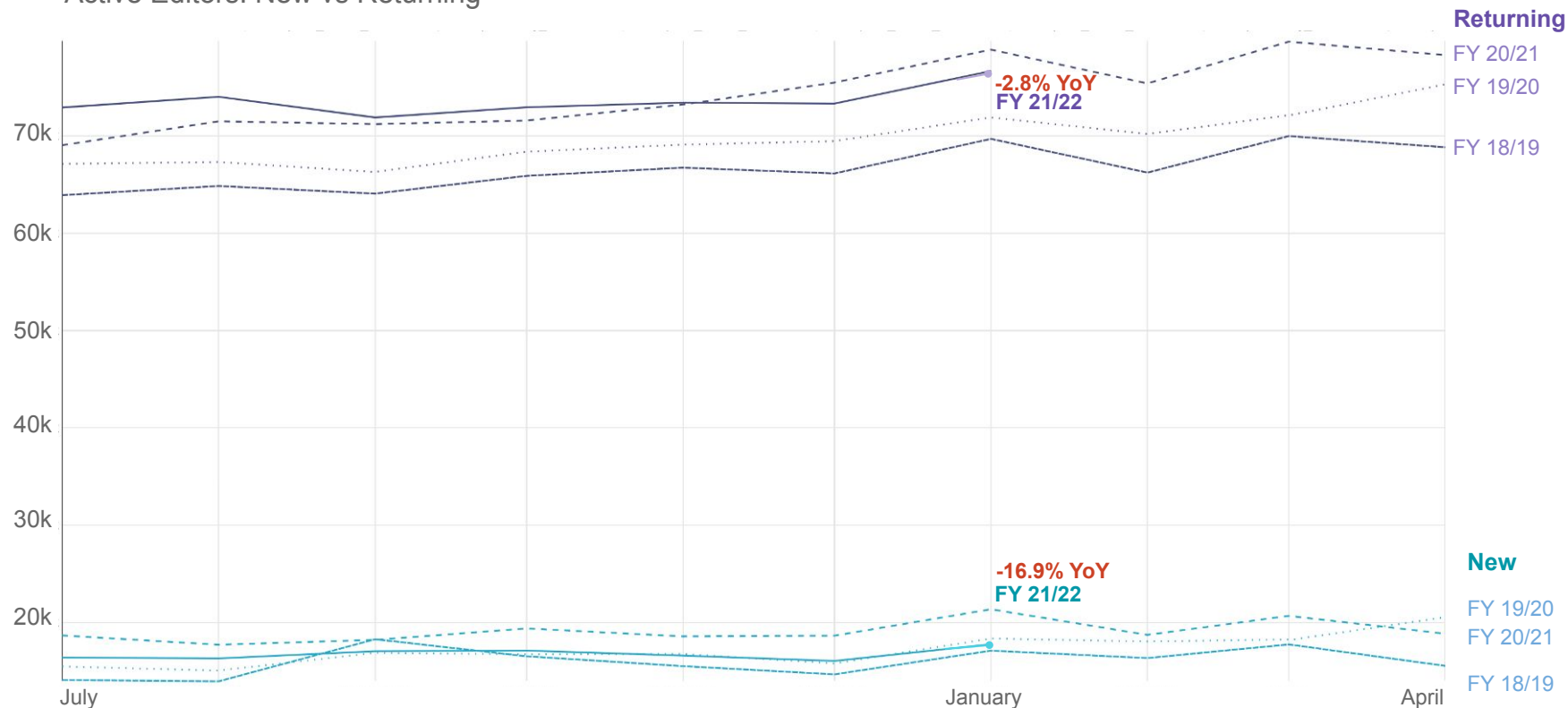
Active Editors by Market



Explore [Content Metrics](#), [Readers Metrics](#) and [Editors Metrics](#) in Superset. Monthly aggregates are also available in Sheets: [Editors & Content](#) and [Readers](#). For metric definitions, see the [Product data glossary](#). For questions: [#product-analytics](#) or [email](#)

# January Metrics Summary for Product People Managers

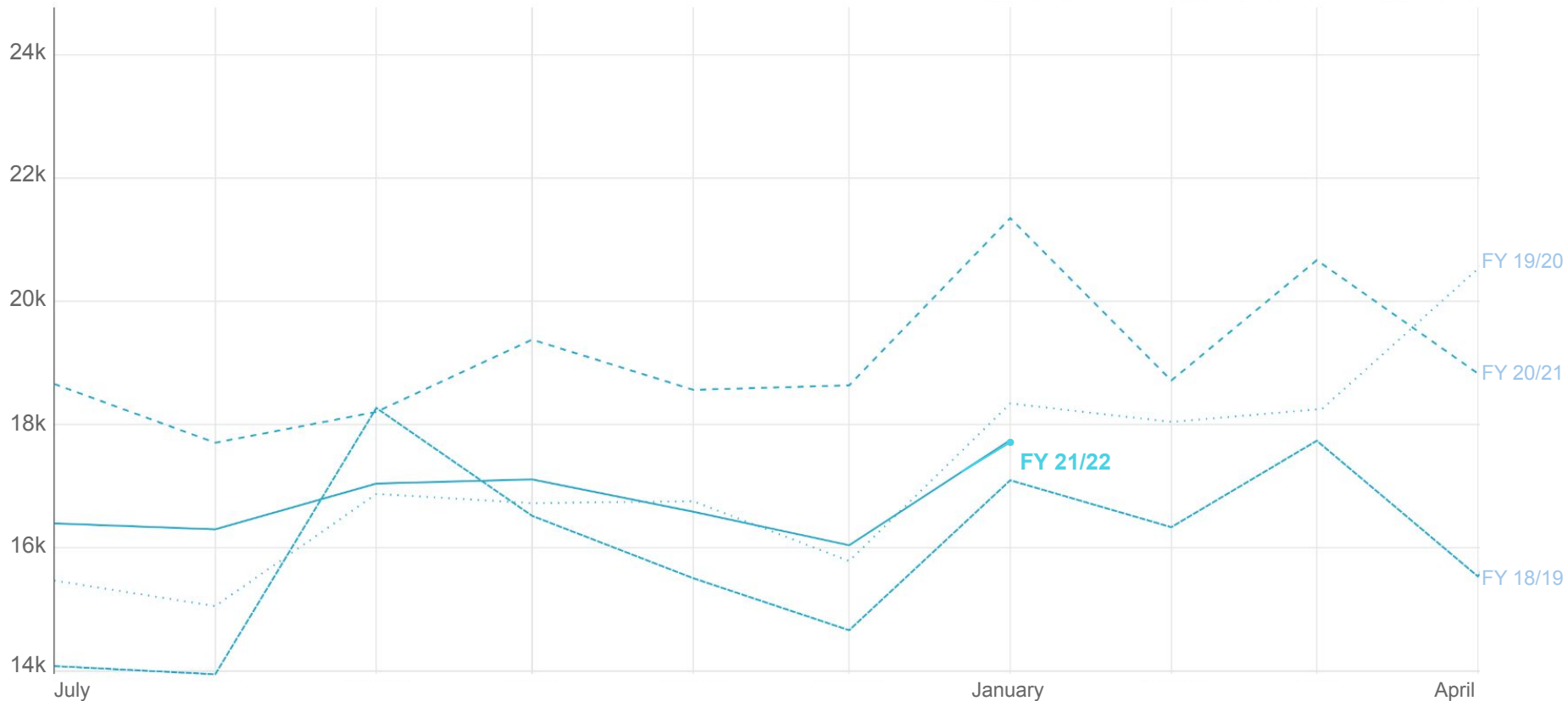
Active Editors: New vs Returning



Explore [Content Metrics](#), [Readers Metrics](#) and [Editors Metrics](#) in Superset. Monthly aggregates are also available in Sheets: [Editors & Content](#) and [Readers](#). For metric definitions, see the [Product data glossary](#). For questions: [#product-analytics](#) or [email](#)

# January Metrics Summary for Product People Managers

New Active Editors: dropped to below 2019 level



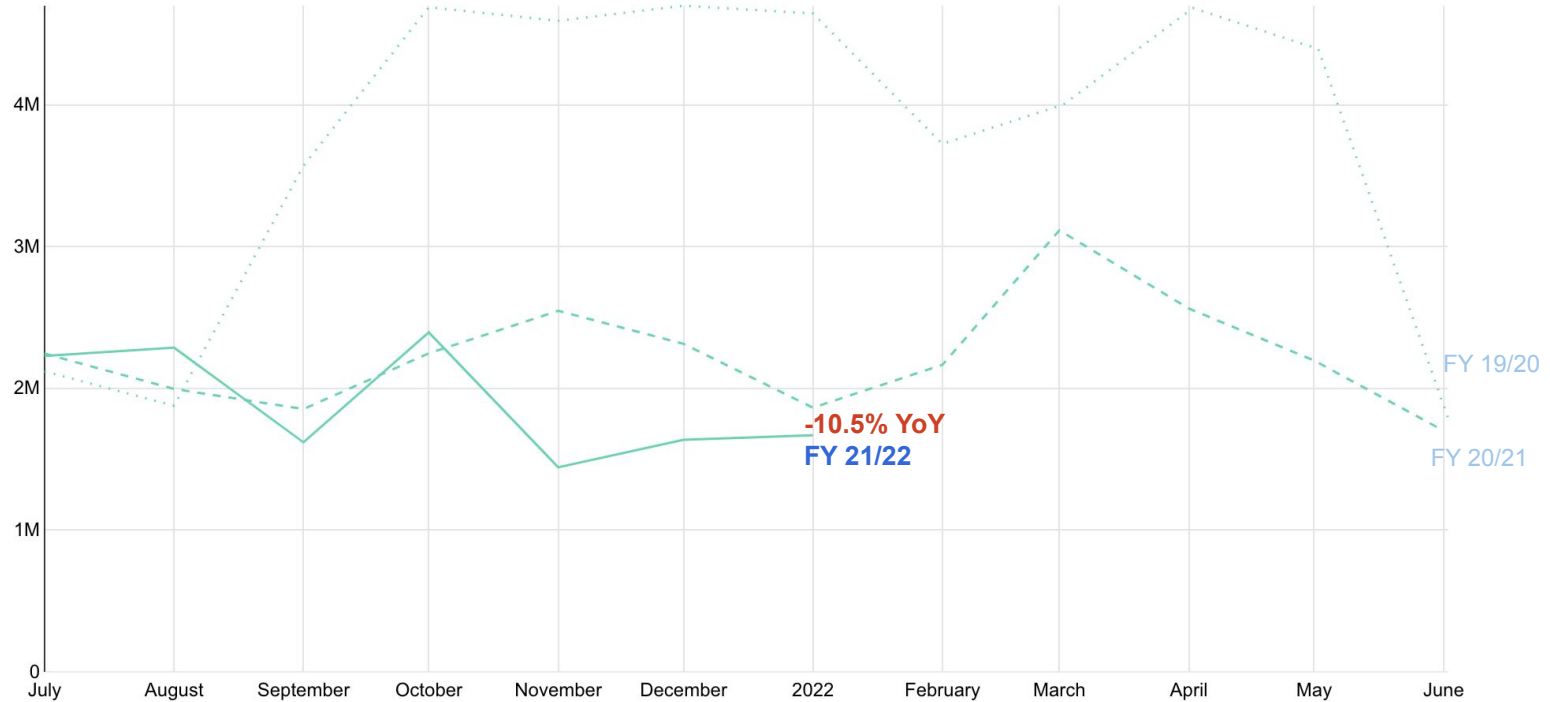
Explore [Content Metrics](#), [Readers Metrics](#) and [Editors Metrics](#) in Superset. Monthly aggregates are also available in Sheets: [Editors & Content](#) and [Readers](#).

For metric definitions, see the [Product data glossary](#). For questions: [#product-analytics](#) or [email](#)



# January Metrics Summary for Product People Managers

Net new content



Explore [Content Metrics](#), [Readers Metrics](#) and [Editors Metrics](#) in Superset. Monthly aggregates are also available in Sheets: [Editors & Content](#) and [Readers](#). For metric definitions, see the [Product data glossary](#). For questions: [#product-analytics](#) or [email](#)

# January Metrics Summary for Product People Managers

Mobile edits

