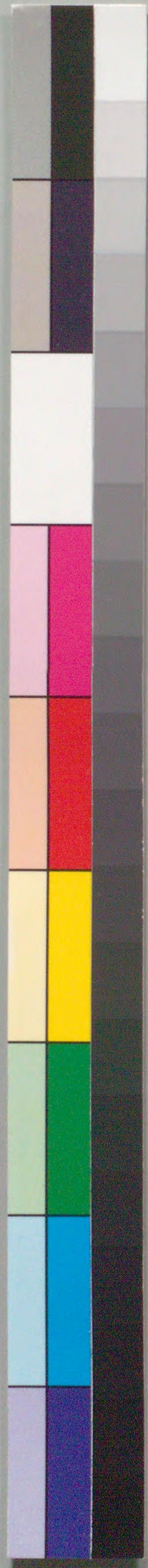


国立国会図書館 重衣草紙 4巻 207-1620



ガラス使用





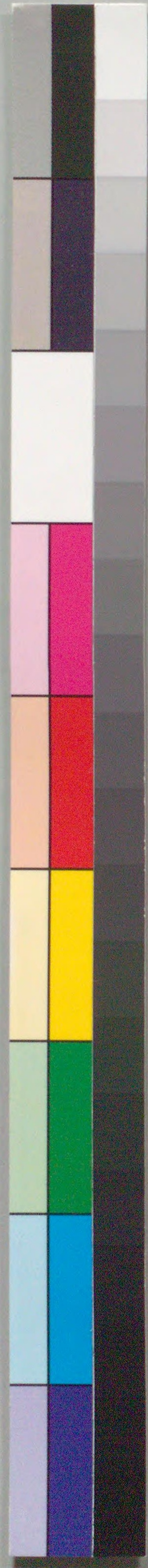
重三小夜草紙

女八百八番

207  
1620









一亭万丸作

湖春亭景松画

重伏小夜衣草紙

酉の春

紅英堂上様

女美貌より唯心のうらみとて貴しきと誓言を述べ清げなり  
 心の濁りたるん糞土を錦ふ包きたらう如くされ彼  
 嬪嬪も無塩宿瘤が賢き如く遠く神代めたる守命  
 神樂拍子の太神の御心と和らげ近き美久の頃おの  
 後鳥羽の朝を乱れと願心の曲直ありて何ぞ容貌の醜美  
 よるやかた老実あやうての心子様方お耳遠く解し難きを  
 説かぬ如くを思ふものくら和らげて齒お合せりも老婆心  
 いもあたる縁糸お結ぶまで昔話と今様のあたる趣向  
 緒玉巻まうなる何と種とて藻の花が根なく草丈植つて  
 の初春のお草紙の斤手間お聊勸懲の端とも成らん事と  
 希ふに

天保八丁酉孟春

一亭万丸題



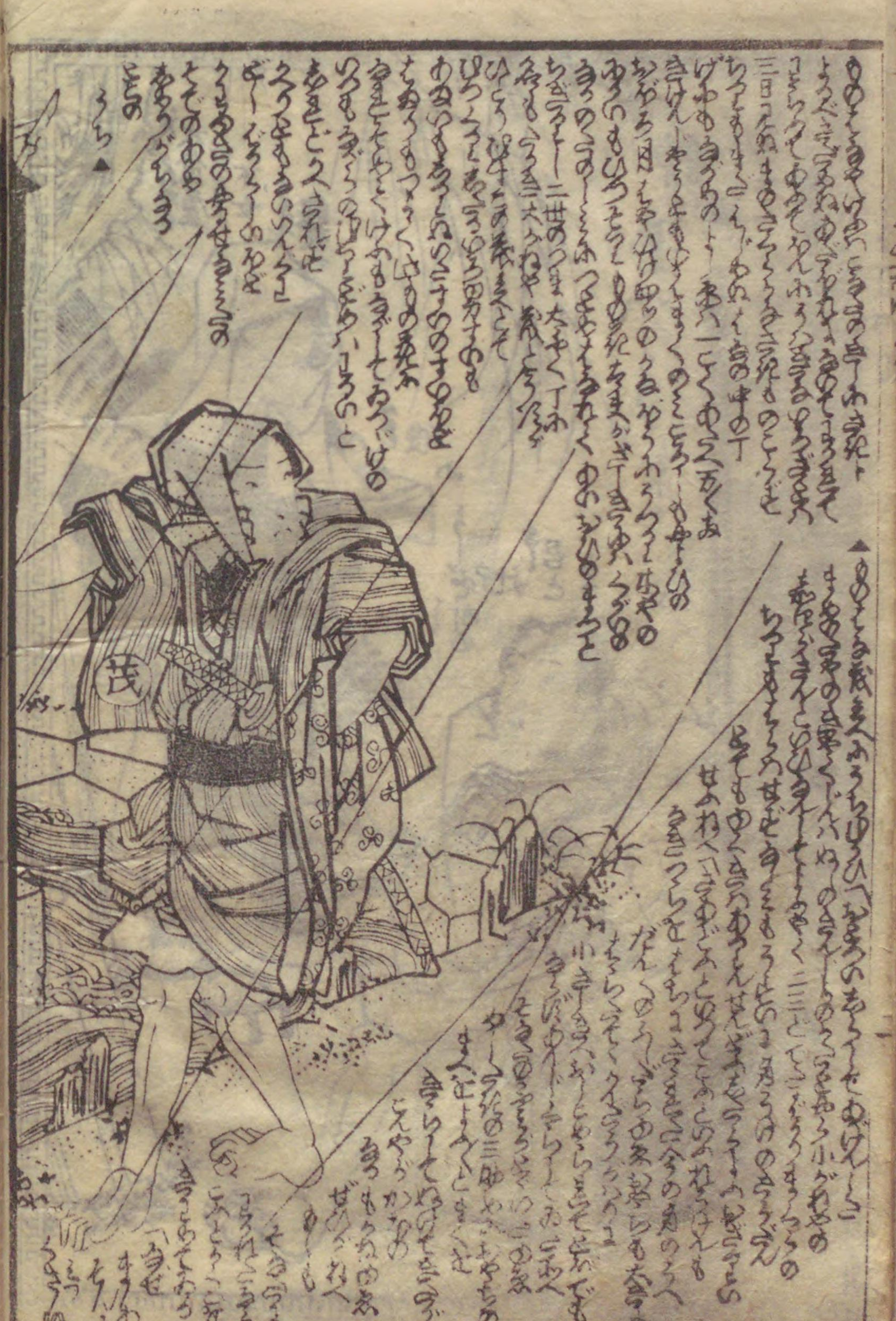






三

此の庭は  
 竹の垣に  
 松の樹に  
 石の径に  
 草花の  
 散りて  
 春の光に  
 照らされ  
 けり



此の庭は  
 竹の垣に  
 松の樹に  
 石の径に  
 草花の  
 散りて  
 春の光に  
 照らされ  
 けり

此の庭は  
 竹の垣に  
 松の樹に  
 石の径に  
 草花の  
 散りて  
 春の光に  
 照らされ  
 けり













11

Handwritten text in a cursive script, likely a form of Japanese calligraphy (kuzushiji), arranged in vertical columns. The text is densely packed and covers most of the page area.



Handwritten text in a cursive script, arranged in vertical columns. The text is densely packed and covers most of the page area.

















Handwritten Japanese text in vertical columns, likely a play script or commentary, located on the left page of the manuscript.



Handwritten Japanese text in vertical columns, likely a play script or commentary, located on the right page of the manuscript.



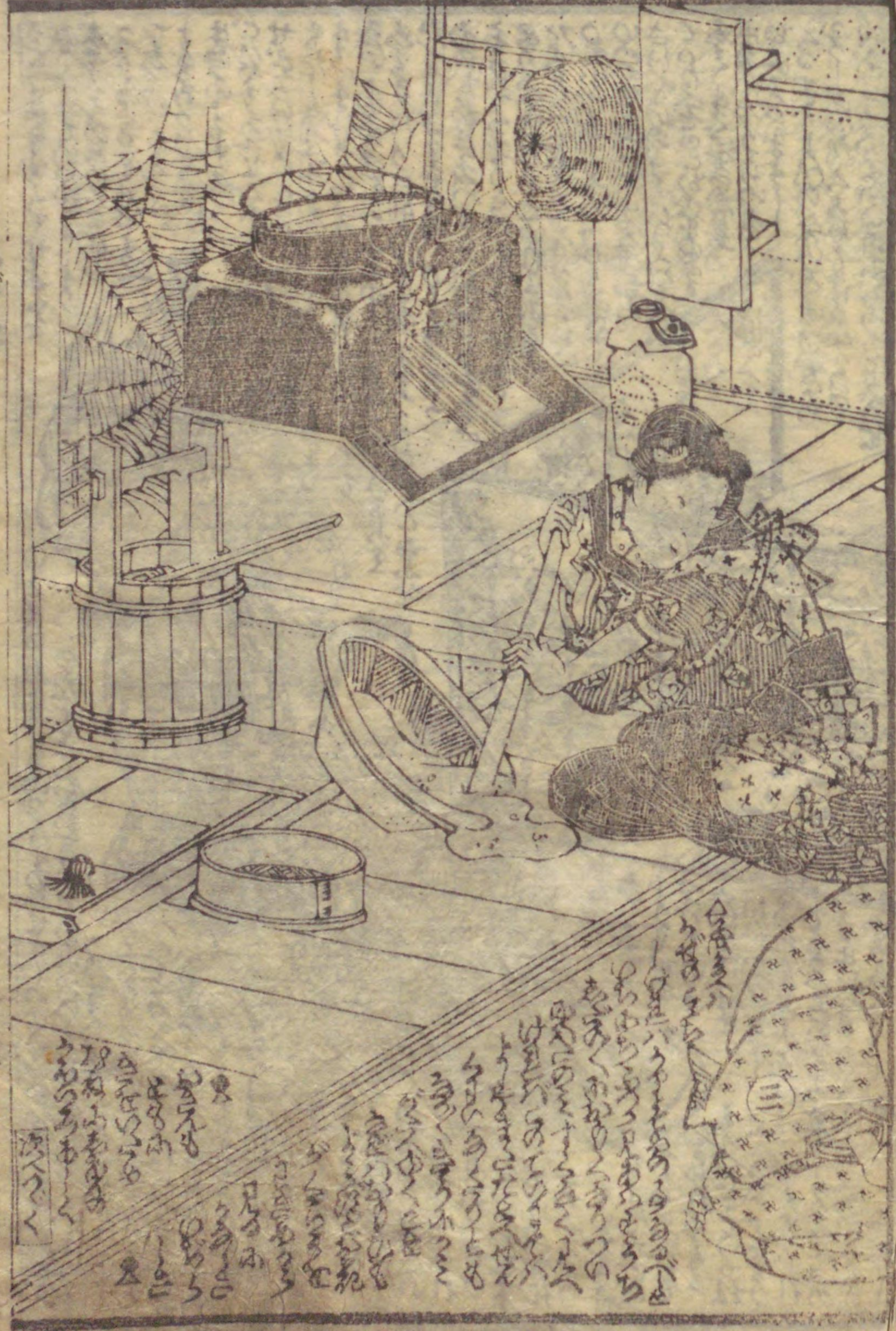












Handwritten Japanese text in the bottom left corner of the left page, including the characters '入る' (enter) and '出る' (exit).



Handwritten Japanese text in the top right corner of the right page, including the characters '顔' (face) and '見' (see).













Handwritten text in Japanese, likely a play script, located at the top and bottom of the left page. The text is written in a cursive style (sōsho) and includes stage directions and dialogue.



Handwritten text in Japanese, likely a play script, located at the top and bottom of the right page. The text is written in a cursive style (sōsho) and includes stage directions and dialogue.









Handwritten text in vertical columns, likely a play script or commentary, written in a cursive style.



Small handwritten notes or signatures at the bottom left of the page.

Handwritten text in vertical columns, continuing the script or commentary from the left page.



Small handwritten notes or signatures at the bottom of the page.









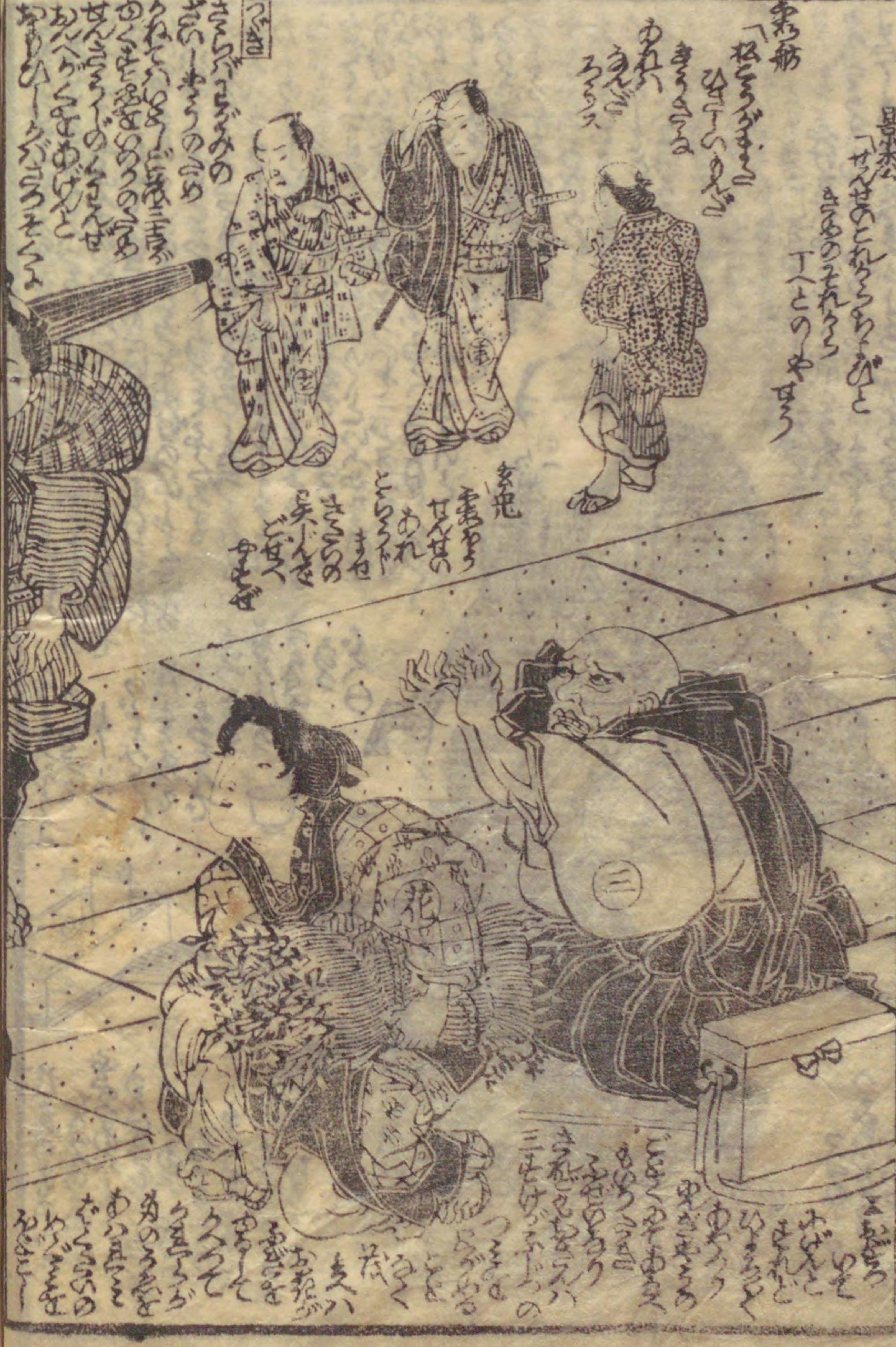
Handwritten text in Japanese kuzushiji script, arranged in vertical columns. The text is densely packed and covers most of the page area.



Handwritten text in Japanese kuzushiji script, arranged in vertical columns. The text is densely packed and covers most of the page area.









207  
1620

天保八年西新刊史類

<p>香 下包 坂本氏製 取次所 紅英堂鳥屋藏版</p>	<p>臣藏替伊呂波 五渡亭國貞画</p>	<p>怡代月 五雲亭貞秀画</p>	<p>化絶對之舞風流 全四冊 五渡亭國貞画</p>	<p>十二段四季繪合 全六冊 香蝶樓國貞画</p>	<p>鏡 萬錦繪 全四冊 香蝶樓國貞画</p>	<p>合鏡 萬錦繪 全四冊 松山</p>	<p>鏡池面影草履打 全四冊 湖春亭景小画</p>	<p>重伏小夜衣草紙 全四冊 湖春亭景小画</p>	<p>春之駒小栗雜談 全四冊 湖春亭梅磨作</p>	<p>昼夜帶雪与播墨土 全四冊 湖春亭梅磨作</p>
--	--------------------------	-----------------------	-----------------------------------	-----------------------------------	---------------------------------	------------------------------	-----------------------------------	-----------------------------------	-----------------------------------	------------------------------------

一亭万丸作の歌川景松画



美艶仙女香  
京橋南傳馬町三丁目  
坂本氏製

黒油美玄香

歌川景松画

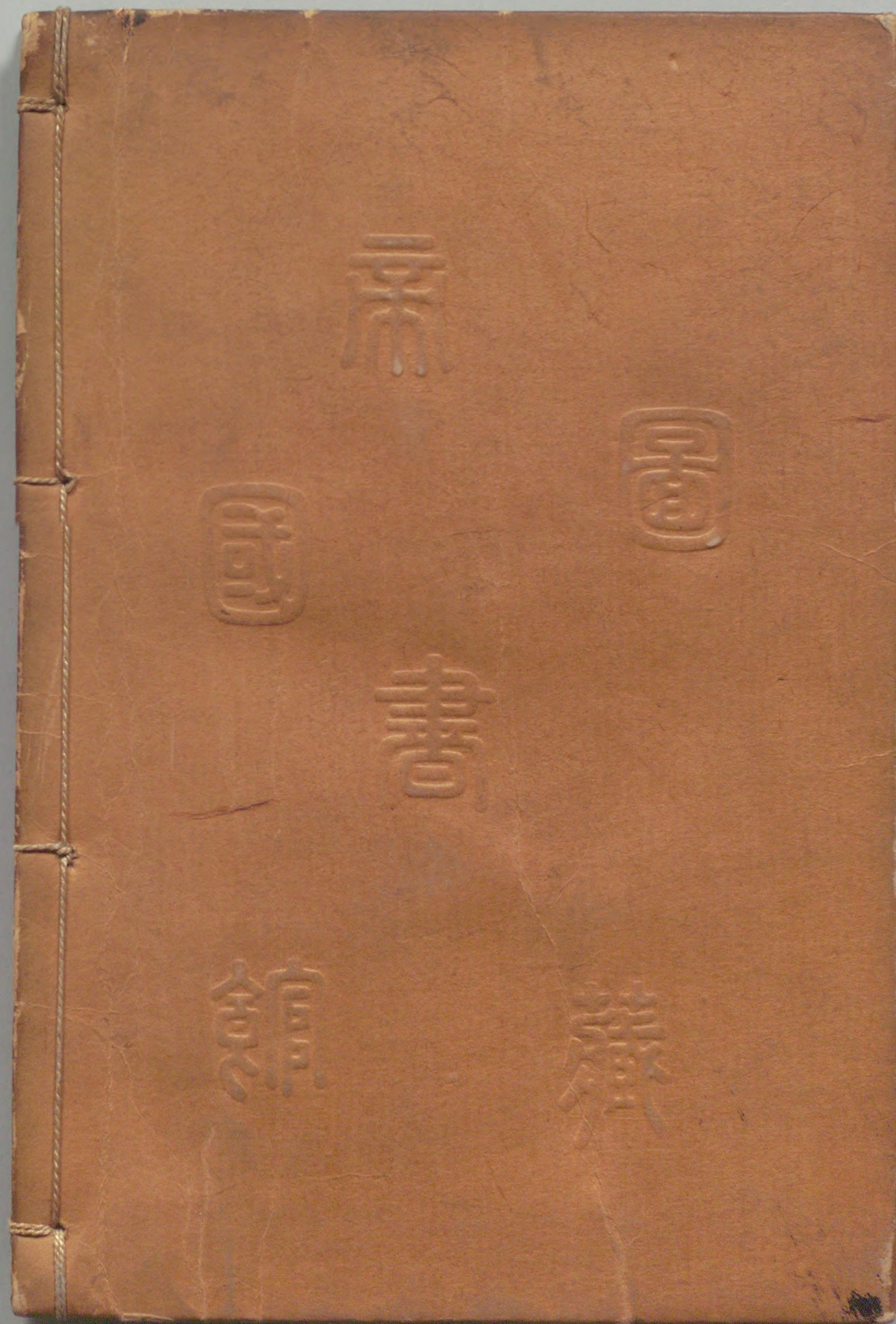
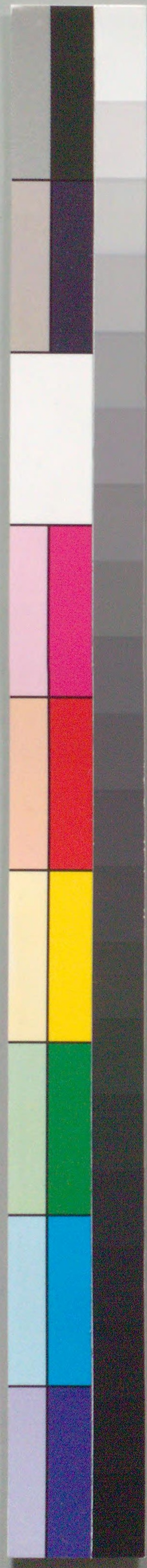




207  
1620







国立国会図書館 重扶小夜衣草紙 4巻 207-1620

ガラス使用