





*400.7038P*  
*29/China*

G-4 ROUTING #	
A C/S G-4	_____
D AC/S G-4	_____
EXECUTIVE	_____
PLANS & POLICY	_____
OPERATIONS	_____
CONST & FAC	_____
TRANSPORTATION	_____
SUPPLY	_____
PROPERTY	_____
PERSONNEL	_____
ADMINISTRATION	_____

*SP* *ED* *SP* *W* *M*

**15 FEB 1949**

*151003*

GENERAL HEADQUARTERS  
FAR EAST COMMAND  
OUTGOING MESSAGE

FROM: CINCFE  
TO: CG PHILCOM.....ROUTINE

**C-67857** Reurnsmsg C 65470, 17 Nov 48 and C 67045, 13 Jan 49.

1. Dept of Army has directed that equipment, presently being held pending receipt of shipping instructions, will be outloaded to China in accordance with provisions of Dept of Army Memo 700-5-6, 27 Oct 48.

2. Dept of Army furnishes specific fund citations and marking instructions for transfer in Dept of Army letter, subject "Requisition Number CH-11-901" dated 1 Feb 49. CINCFE is forwarding Dept of Army letter with inclosure listing the items and quantities to be shipped.

OFFICIAL:

APPROVED:

R. M. LEVY  
Colonel, AGD  
Adjutant General

*Mfor*  
H. E. EASTWOOD  
Colonel, GSC  
Assistant Chief of Staff, G-4

Copy furnished: Ordnance Section

**RETURN**

DISPATCHED  
15 FEB 49  
G-4 CHD

RESTRICTED

*Sup*  
**77387**

G4 File

G4 File





RESTRICTED

MEMORANDUM FOR RECORD:

CWF/EHM/lg 15 Feb 49

SUBJECT: Requisition Number CH-15-901"

1. By letter AGAO-C 091.3 China (28 Jan 49)CSGLD, subject "Requisition Number CH-15-901" dated 1 Feb 49, D/A advised CINCFE that supplies presently being held in PHILCOM for possible shipment to China will be outloaded in accordance with the procedure established in D/A Memo 700-5-6, 27 Oct 48. Letter further furnished the fund citations to which the shipping costs would be charged for the transfer of this equipment to the Republic of China. In addition, letter also furnished the marking instructions to be utilized in the delivery of the equipment. D/A requires that, in addition to the documents and manifests normally furnished, that two copies of Ocean Manifests be furnished by airmail to the Foreign Military Aid Branch, Logistics Division, Dept of Army.

2. In view of the length of time it takes for a letter to be received in PHILCOM, the indicated action is to furnish the information cited in para 1 above to PHILCOM as soon as possible. This action is indicated in view of the fact that several rads have been received requesting information regarding the 5,000 M/T of Ordnance supplies presently being held pending D/A instructions. Latest of these was D/A rad WAR 82412, 8 Jan 49 and CINCFE rad C 67045, 13 Jan 49.

3. By instant rad to PHILCOM, CG PHILCOM is advised that the quantities involved in the 5,000 M/T of Ordnance supplies and equipment will be shipped to China.

4. Interim action on G-4 Journal 77387.

5. Supply Division suspense date - 18 February 49.

CWF CX 26-6045

(Div Chief)

EHM W 26-6043

RESTRICTED

RESTRICTED

MEMORANDUM FOR RECORD:

CWT/ENR/12 12 Feb 49

SUBJECT: Registration Number CH-15-901"

1. By letter AGAO-C 001, 3 China (28 Jan 49) (CSGID), subject "Registration Number CH-15-901" dated 1 Feb 49, D/A advised GINCFE that supplies presently being held in PHILCOM for possible shipment to China will be unloaded in accordance with the procedure established in D/A Memo 700-5-6, 27 Oct 48. Letter further furnished the fund citations to which the shipping costs would be charged for the transfer of this equipment to the Republic of China. In addition, letter also furnished the marking instructions to be utilized in the delivery of the equipment. D/A replies that, in addition to the documents and manifests normally furnished, that two copies of Ocean Manifests be furnished by airmail to the Foreign Military Aid Branch, Logistics Division, Dept of Army.

2. In view of the length of time it takes for a letter to be received in PHILCOM, the indicated action is to furnish the information cited in para 1 above to PHILCOM as soon as possible. This action is indicated in view of the fact that several tabs have been received requesting information regarding the 5,000 M/T of Ordnance supplies presently being held pending D/A instructions. Latest of these was D/A tab WAR 82412, 8 Jan 49 and GINCFE tab G 67045, 13 Jan 49.

3. By instant tab to PHILCOM, CG PHILCOM is advised that the quantities involved in the 5,000 M/T of Ordnance supplies and equipment will be shipped to China.

4. Interim action on G-4 Journal 77387.

5. Supply Division suspense date - 18 February 49.

CWT/ENR/12 28-6015

MM 28-6013

(Div Chief)



RESTRICTED



GENERAL HEADQUARTERS  
FAR EAST COMMAND

OUTGOING MESSAGE

GD SP HAH/EHM/jep

400.703  
EP

7 FEB 1949

*Secret*

070617

FROM: CINCFE  
TO: CG PHILCOM.....PRIORITY

*G-67653* Reurad S 40945 GSDS, 2 Feb 49. MANED excesses will be retained per instructions DC/S GHQ. Upon receipt of info of property excess to PHILCOM in sufficient detail to take proper disposal action, disposition instructions will be furnished without delay.

CINCFE rad Z 35217, 4 Jan 49, provided you with plan for the provision of shipping to meet your requirements for outloading of known and potential excesses exclusive of MANED excesses and DA has provided funds to move these excesses in accordance with this plan. CINCFE has taken action to provide this shipping. Therefore, in the event cargo exclusive of MANED cannot be made available for the lift, CINCFE will be advised immediately indicating the amount of cargo that can be made available and the phasing by month for the outloading to complete the rollup.

OFFICIAL:

APPROVED:

R. M. LEVY  
Colonel, AGD  
Adjutant General

*om ES*  
H. E. EASTWOOD  
Colonel, GSC  
Assistant Chief of Staff, G-4

- Copies to:
- C-in-C
- C/S
- G-3
- Cml
- Eng
- Fiscal
- Med
- Ord
- QM
- Sig
- SS
- TI&E
- Trans

G-4 ROUTING

A C/S G-4	
AC/S G-4	
EXECUTIVE	
PLANS & POLICY	
OPERATIONS	
CONST & FAC	
TRANSPORTATION	
SUPPLY	
PETROLEUM	
BUDGET	
PERSONNEL	
ADMINISTRATION	



Handling and transmission of literal plain text of this message as correspondence of the War Department with the pro-

*Secret*

SECRET

RETURN COPY

*Sup 76758*

G-4 FILE

SECRET

HAH/EHM/jep

MEMO FOR RECORD:

1. Problem: Disposition instructions to PHILCOM for excesses to be moved to other commands.

2. References:

a. For prior history see M/R to CX 67461 (29 Jan 49) which stated that previous instructions for disposition of all tech svcs excesses in Manila area may be applied to Eng supplies in Nichols Field only. Did not concur in extension of this authority to Eng excesses in Stotsenberg area. Pointed out necessity for complete info here on all excesses for coordinated disposition instructions in order to avoid "dumping" on to other commands. Did state that, in determining whether items for out-shipment are repairable, the cost of packing, crating and shipping will be considered.

b. PHILCOM S 40945 GSDS (2 Feb 49) acknowledges receipt of CX 67461 and states directions therein will produce adequate tonnage for Feb scheduled ships. However, for loading of ships scheduled in March disposition instructions will be required on excesses in Stotsenberg area. States lists of MANED excesses at Stotsenberg area will be submitted and asks that these excesses be used to fill in as much as possible in order to load scheduled shipping. Asks specific authority to use Class A (Serviceable) Stotsenberg excesses to build up port backlog.

3. Additional Data:

a. Lt. Col. Rehman, Trans Sec, states

(1) Approx \$2.5 million has been made available to move PHILCOM excesses except MANED excesses. Shipping has been scheduled according to plan approved by G-4. Total tonnage involved approximates 658,200 MT, exclusive of the MANED excesses (150,000 MT) in the Stotsenberg area.

(2) That General Almond, while visiting in PHILCOM in December, made definite statements that the MANED excesses were to remain in PHILCOM as an FEC reserve.

(3) The last report from PHILCOM indicates only 6,000 measured excesses available at port as a loading backlog.

b. Col. Sturman, G-4 Operations, states that General Almond was definite in his instructions to PHILCOM that the MANED excesses would not be moved out at this time.

c. PHILCOM "Problems Arising Out of Plan String" written by Col. M. S. Cralle and submitted to G-4 as an inclosure to G-4 c/n (1), 27 Jan 49, subj, "Problem String" corroborates the MANED tonnages at Stotsenberg and states, "Instructions by General Almond were to leave at Stotsenberg MANED supplies and equipment turned over to PHILCOM, with the Army to be responsible for their security."

SECRET



SECRET

MEMO FOR RECORD (Contd):

d. PHILCOM radio S40910 GSDS (27 Jan 49) indicates that disposition instructions have been received on the above subj excesses except Lists 1 and 9 of Eng Materials. Eng Sec, Mr. Steffes, indicates that these two lists were incomplete and materials being classed by Federal classes only, and until further information is received disposition instructions cannot be given.

4. Decision: G-4 does not concur in blanket authority to PHILCOM for movement of the MANED excesses in the Stotsenberg area. This action informs PHILCOM that disposition instructions on all property except MANED excesses can be issued promptly after receipt here of complete information which has been previously requested.

*Trans Col Miller concurs* *EM*

5. SPSD - None.

6. Action complete on G-4 Journal 76758.

HAH 26-6044

EHM *EM*

SECRET

**SECRET**

D R A F T

GENERAL HEADQUARTERS  
FAR EAST COMMAND

D R A F T

OUTGOING MESSAGE

GD SP HAH/EHM/jep-ra

FROM: CINCFE

TO: CG PHILCOM . . . . . PRIORITY

Reurad S 40945 GS<sup>2 Feb 49.</sup>DS, MANED excesses will be retained per instructions D C/S GHQ. Upon receipt of information of property excess to PHILCOM in sufficient detail to take proper disposal action, disposition instructions will be furnished without delay.

CINCFE rad Z 35217, dated 4 Jan 49, provided you with plan for the provision of shipping to meet your requirements for outloading of known and potential excesses exclusive of MANED excesses and D/A has provided ~~additional~~ funds to move these excesses in accordance with this plan. CINCFE has taken action to provide this shipping. Therefore, in the event cargo exclusive of MANED cannot be made available for the lift, CINCFE will be advised immediately indicating the amount of cargo that can be made available and the phasing by month for the outloading to complete the rollout.

OFFICIAL:

APPROVED:

Copies to:

- |        |       |
|--------|-------|
| C-in-C | Ord   |
| C/S    | QM    |
| G-3    | Sig   |
| Chem   | SS    |
| Eng    | TI&E  |
| Fiscal | Trans |
| Med    |       |

<b>G-4 DRAFT</b>	APP'D BY <u>2/9/49</u>
FOR FORMAL CONCURRENCE AND	Submission to C/S
AND	Sig & Dispat <u>4</u> ✓
	Sig & Dispat DIV.

D R A F T

**SECRET**

D R A F T

GENERAL HEADQUARTERS, FAR EAST COMMAND  
ADJUTANT GENERAL'S OFFICE  
RADIO AND CABLE CENTER

G-4 ROUTING

A C/S G-4	_____
D AC/S G-4	_____
EXECUTIVE	_____ ✓
PLANS & POLICY	_____
OPERATIONS	_____
CONST & FAC	_____ ✓
TRANSPORTATION	_____
SUPPLY	_____
PETROLEUM	_____
BUDGET	_____
GPM PERSONNEL	_____
ADMINISTRATION	_____ <i>Edw</i>

# INCOMING MESSAGE

**ACTION COPY**  
*Handwritten signature*  
**PRIORITY**

2 Feb 49

FROM : CG PHILCOM

TO : CINCPAC

NR : S 40945 GSDS

Reurad CX 67461. Subj is disposition instrs. RECTACK. Directions contained therein will produce adequate tonnage Feb. However for month Mar disposition instrs will be reqd on Stotsenberg excesses.

Re MANED excesses, Stotsenberg has been directed to submit lists of MANED excesses to CINCPAC and if bottoms are avail to plan on filling in with this mat and sup as much as possible. Earliest disposition instrs imperative in order that this comd can meet shipping space projected for both Feb and Mar. Request auth to ship class A Stotsenberg excesses, engr and others during Month Feb if necessary to build up backlog at port area due to distances between port and Stotsenberg.

NO SIG

ACTION: G-4

**ACTION COPY**

INFORMATION: COMMANDER IN CHIEF, CHIEF OF STAFF, G-3, AG, SIGNAL, ENGINEER, ORDNANCE, QUARTERMASTER, SPECIAL SERVICES, SURGEON, FISCAL, T I & E, TRANSP

34950

PRIORITY

TOO : 020746 Z  
MCN : 92643

*Secret*

*Handwritten note:*  
Handed to Lt. Stotsenberg

8

Paraphrase not required. Handle as correspondence of classification carried hereon per paragraphs 51i and 60a, AR 380-5.

76758



400.703 EP

AG 400.703(27 Oct 49) GD 4th Ind

GENERAL HEADQUARTERS, FAR EAST COMMAND, APO 500 24 JAN 1949

TO: Commanding General, Philippines Command, APO 707

*cy*  
*htw*

1. The turn-in of Item 1, basic letter (tools and accessories for Set #13, Signal Tower, Topo DA) is not favorably considered, since subject unit is currently at full strength and since the equipment is authorized the unit by T/O&E 5-188 with Changes 1 and 2.

2. The turn-in of Item 2 (Tower) and Item 3 (Trailer, 2-wheel, utility pole type 2 1/2 ton type III) is a matter pertaining to your command. CINCPAC radio CX 59847, 12 April 1948, delegated to major commanders, Far East Command, the responsibility for issue of equipment which is qualified in appropriate T/O&E with the remark "Outside continental limits of the United States as authorized by Theater of Operations commander".

BY COMMAND OF GENERAL MacARTHUR:

MAILED 24 49 AG. GHO

*after*  
J. M. EBBITT,  
Captain, AGD,  
Asst Adj Gen.

G-4 ROUTING	
A C/S G-4	_____
D AC/S G-4	_____
EXECUTIVE	_____
PLANS & POLICY	_____
OPERATIONS	_____
CONST & FAC	_____
TRANSPORTATION	_____
① SUPPLY	_____ <i>am</i>
PETROLEUM	_____
BUDGET	_____
PERSONNEL	_____
② ADMINISTRATION	_____

DISPATCHED  
22 JAN 49  
G-4 AGD

*Sup*

75827

G 4 File

G 4 File

MEMORANDUM FOR RECORD:

CWF/RHV/EHM/lg 21 Jan 49

1. By ltr, 549th Engr Base Survey Company, Philippine Scouts, subj "Equipment Not Needed to Accomplish Mission" dtd 27 Oct 48, this Engr Company requested that tools and accessories for Signal Tower, Topo DA, Set #13, Tower, Section B, and Trailer, 2 wheel, utility pole type, 2½ ton, were not required by the organization to perform its assigned mission.

2. In view of this it was requested that the organization be permitted to turn in the equipment outlined in par 1 above.

3. 1st, 2nd and 3rd Inds fwded this basic communication thru ~~the various administrative~~ channels to CINCFE. In each case inds recommended approval.

4. Incident to the receipt of the correspondence in GHQ, it was considered desirable to ascertain the comments and/or recommendations of the Engr Section, GHQ. This was accomplished by C/N (1), subj as above, dtd 6 Jan 49.

5. By C/N (2), Engr to G-4, 19 Jan 49, the Engr Section stated that the 549th Engr Base Survey Company was at the present time up to full strength and that the equipment authorized under T/O&E 5-188, with changes 1 and 2, were required by that organization and therefore the Engr Section did not concur in the turn-in of Item 1 (Tools and Accessories for Signal Tower, Topo DA). Investigation into the problem revealed that Items 2 (Tower) and Item 3 (Trailer, 2 wheel, utility pole type, 2½ ton) were issued to the organization based upon authority delegated to the major commanders to issue individual and organization equipment when it was considered desirable when the notation in the T/O&E was "outside the continental United States when authorized by Theater of Operations commander". This authority was redelegated to the major commands of the FEC in CINCFE rad CX 59847, 12 April 48.

6. In view of the above, the indicated action is to inform CG PHILCOM that the turn-in of tools and accessories for Set 13, Signal Tower, Topo DA, is not favorably considered since the organization is at full strength and the equipment is authorized under T/O&E 5-188 as amended. Further, to advise CG PHILCOM that the turn-in of Items 2 and 3 is a matter pertaining to his command in view of the delegation of responsibility for the issue of equipment qualified by the remark "outside continental limits of the United States as authorized by Theater of Operations commander".

7. By 4th Ind, the above indicated action is accomplished.

8. Action completed on G-4 Journal 75877.

9. Concurrence: Col. Herberts (G-3).

CWF CWF 26-6045 RHV RHV EHM EHM

**GENERAL HEADQUARTERS  
FAR EAST COMMAND**

**CHECK SHEET**

(Do not remove from attached sheets)

*A*  
*SUP*

File No:

Subject: Equipment Not Needed to Accomplish Mission

Note  
No.

From: G-4

To: Engr Section

Major C. W. Fuller, 26-6045

Date:

6 JAN 1949

(1)

Pursuant to telephone conversation (Col Van Atta, Engr Section and Lt. Col. Van Volkenburgh, G-4) the attached correspondence is forwarded for comments and recommendations upon which G-4 can base a reply to CG PHILCOM.

1 Incl  
as indicated

*Mfar*  
H. E. E.

74901

(2)

Engr

G-4

Major Keane, 26-8561

19 JAN 1949

1. Reference Item 1 of attached basic letter, the turn-in of tools and accessories is not favorably considered by this office. The 549th Engineer Base Survey Company at the present time is up to full strength in personnel; and these items are properly authorized in T/O&E 5-188, w/change 1 and 2.

2. Reference items 2 and 3 of attached basic letter, these items may be turned in provided Commanding General, PHILCOM, approves request. These items are issued as authorized by Theater of Operations Commander; authority for such decisions has been delegated to major commanders by CINCPAC.

1 Incl  
n/c

*[Signature]*  
for H. J. C.





400.70381  
400.2

GENERAL HEADQUARTERS  
FAR EAST COMMAND  
APO 500

OUTGOING MESSAGE

UNCLASSIFIED

G-4 ROUTING	
G-4 ROUTING	
A C/S G-4	_____
D AC/S G-4	_____
EXECUTIVE	_____
PLANS & POLICY	_____
OPERATIONS	_____
CONST & FAC	_____
GD SP	_____
SUPPLY	_____
PETROLEUM	17 JAN 1949
BUDGET	_____
PERSONNEL	_____
ADMINISTRATION	_____

FROM: CINCFE

TO : DEPT OF ARMY . . . . ROUTINE

( **2-36637** ) For CSGLD/D5. Reurad WCL 35798, 12 January 49.

1. The problem in the FEC is not one of determination of excesses but rather is one of identification, classification, segregation and inventorying of property including correction and completion of accurate stock records and repair of certain critical items of Class C group to make them serviceable.

2. The major portion of the disposal of surplus property program having been completed and the withdrawal of property from Korea finished, the initiation of a program to accomplish the task outlined in paragraph 1 is the next step and has been directed. Copy of this directive is being forwarded by airmail for your information.

3. Needed here in the way of temporary assistance is personnel of such technical qualifications that they can conduct on the job training of personnel available to FEC but deficient in these qualifications. Such personnel should be placed on TDY with FEC for six months and be available for movement within FEC as needed. Needed further is selection of personnel, both military and civilian, more experienced and better qualified to meet the MOS and position requirements of current and future requisitions as applied particularly to depot personnel for Engineers.

4. Eng, Trans, Med, and Sig teams desired. Trans personnel should be qualified to identify and classify marine spare parts particularly for General Motors, Fairbanks-Morse, Superior, and Buda engines. Sig personnel furnished should be specialists trained in packing and repair. Cml and QM teams not required. Ord reqmt will be met by anticipated visit of Colonels Webb and Campbell from Office, Chief of Ordnance.

5. Personnel offered in WCL 35798 for four services considered sufficient except the Eng should furnish eight civilians to provide for one team in each of four command areas.

6. Offer by DA of assistance in solving this problem is appreciated.

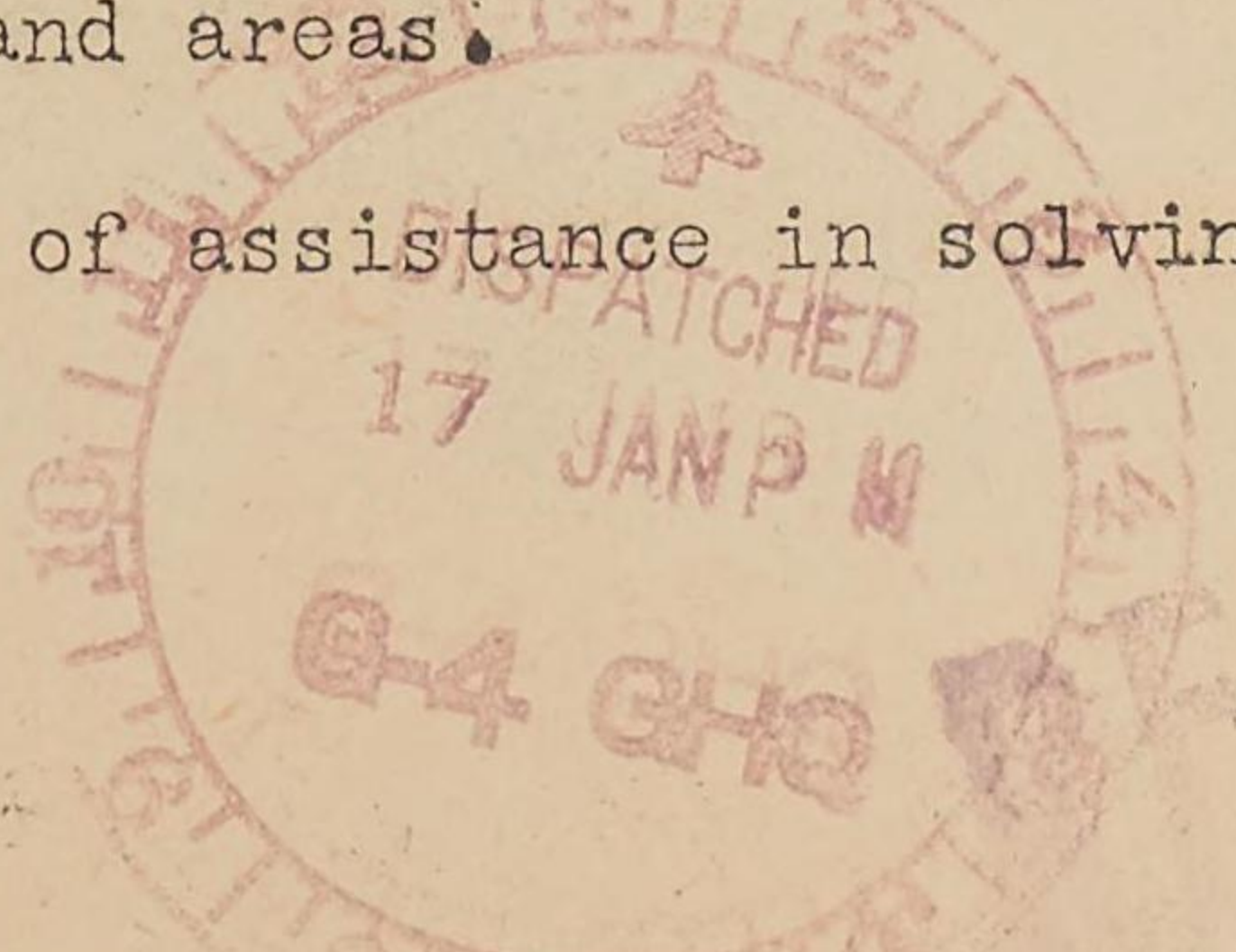
OFFICIAL:

R. M. LEVY  
Colonel, AGD  
Adjutant General

APPROVED BY:

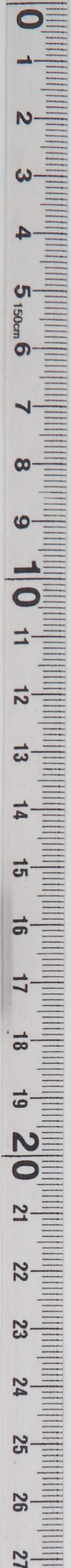
H. E. EASTWOOD  
Colonel, GSC  
Assistant Chief of Staff, G-4

Copies: C-in-C; C/S; G-1; G-2; Sig; Eng; Ord; QM; Cml; Med; Trans



175433

G-4 FILE



*[Faint, mostly illegible text and markings on aged paper, including a blue scribble and a circular stamp.]*



CONFIDENTIAL

MEMO FOR RECORD:

15 Jan 49 GD SP ALD/elh

1. Memo from DC/S, FEC, presently in Wash, to C/S, FEC, 12 Jan 49, stated that as a result of Gen Almond's discussions of difficulties encountered in securing qualified personnel for activities connected with the disposal of our excess property and equip particularly in Okinawa and Guam, Logistics Div, DA, proposes to assist FEC by sending qualified teams from the DA to this comd for use in inspection, classification, and assistance in other problems. Gen Almond states in this memo that this recommendation was made by him in conference with Gen Aurand and his assistants due to Gen Almond's visit thru the islands where he found the greatest problem in disposal and classification of FEC property would be that of lack of technically qualified personnel. Gen Aurand agreed to allow these teams to assist ~~in~~ <sup>not</sup> only in inspection but also in the process of classification of depot stocks. Gen Aurand also agreed to allow these teams to remain long enough to conduct some on-the-job ~~training~~ instruction for our personnel now engaged. Gen Almond states that the forthcoming rad which is to be received here indicates ~~that~~ merely the basis on which the tech services feel capable of providing the indicated help. The DC/S recommends that FEC tech service chiefs conform as nearly as possible to the indicated assistance but where it seems to be greatly inadequate to do us any real good that they not hesitate to ask for what they feel is needed. Gen Almond further recommends that we give this problem immediate attention and accept the offer of the DA.

2. DA rad, WCL 35798, 12 Jan 49 (referred to by Gen Almond in memo, par 1 above), states that the matter of sending technically qualified personnel to the FEC to inspect and classify depot stocks to determine materials in excess to FEC needs has been considered by chiefs of tech services. Chiefs of tech services made recommendations for the contents of their teams as follows:

- a. Chief, Engrs, recommended a team of 6 civilians.
- b. Chief, Ord, recommended a team of 1 officer and 3 civilians but stated that personnel presently on duty in the FEC were considered qualified to make necessary determination without assistance.
- c. Chief, Trans, recommended team of 1 officer and 4 civilians ~~if~~ if required.
- d. QMG, recommended 3 teams of 1 officer and 3 civilians each, and stated that this recommended personnel is not available ~~but~~ will be hired if desired.
- e. Surg Gen, recommended team of 1 officer only inasmuch as quantity of property is considered to be too small to warrant additional personnel.
- f. Chief, Cml Corps, recommended 1 team of 2 officers and stated that officers are on duty in Korea and Hawaii. Further stated that very little property is considered to be excess to FEC needs.

CONFIDENTIAL

G4 File

CONFIDENTIAL

M/R: (cont'd)

g. Chief, Signal Officer, recommended team of 2 officers and stated that climatic conditions are such as to render materials of little value unless adequately stored and protected. The 2 recommended officers are to consist of 1 to work on plant type equip and the other on general Sig supplies.

DA rad further requested comments and recommendations.

3. At a conference conducted by G-4 on 14 Jan attended by Chiefs of tech services or their representatives, the content of DA rad was discussed and a reply prepared which was concurred in by the following representatives of tech services in attendance: Ord (Gen Niblo), QM (Gen Hopping), Eng (Col Garges), Cml (Col King), Trans (Lt Col Brown and Lt Col Albaugh), Med (Capt Watson), Sig (Lt Col Phipps). Subsequent to the conference, Chief Signal Officer (Gen Back) indicated his concurrence in the rad.

4. The rad proposed and concurred at the above referenced conference contained the following comments and recommendations:

a. The problem in the FEC is not one of a determination of excess but rather one of identification, classification, segregation, and inventorying of property including correction and completion of accurate stock records and repair of certain critical items of Class C group to make them serviceable.

b. Large portion of the disposal of surplus property program having been completed and the withdrawal of property from Korea finished, the initiation of a program to accomplish the task outlined in par a above is the next step and has been directed. Proposed rad states that this directive is being fwded by airmail for DA info.

c. Proposed rad states that required in the FEC in the way of temporary assistance is personnel of such technical qualifications that they can conduct on-the-job training of personnel available here but deficient in these qualifications. Such personnel should be placed on TDY with FEC for 6 months and be available for movement within FEC as needed. Required further is selection of personnel both military and civilian, more experienced and better qualified to meet the MOS and position reqmts of current and future reqs as applied particularly to depot personnel for Engr.

d. Eng, Trans, Med, and Sig, teams are desired. Trans team should be qualified to identify and classify marine spare parts particularly for GM, Fairbanks-Morse, Superior, and Buda engines. Sig personnel should be specialists trained in packing and repair. Cml and QM teams are not required. Ord reqmt will be met by anticipated visit of Col's Webb and Campbell from Ofc, Chief Ord.

e. The personnel offered in WCL 35798 (par 2 above) considered sufficient except that the Eng should be furnished 8 civilians in order to provide for one team in each of the four commands areas.

CONFIDENTIAL

CONFIDENTIAL

M/R: (cont'd)

g. Chief, Signal Officer, recommended team of 2 officers and stated that climatic conditions are such as to render materials of little value unless adequately stored and protected. The 2 recommended officers are to consist of 1 to work on plant type equip and the other on general sig supplies.

DA rad further requested comments and recommendations.

3. At a conference conducted by G-4 on 14 Jan attended by Chiefs of Tech services or their representatives, the content of DA rad was discussed and a reply prepared which was concurred in by the following representatives of Tech services in attendance: G-4 (Gen Noble), GM (Gen Hopping), Eng (Col Garges), Cml (Col King), Trans (Lt Col Brown and Lt Col Albaugh), Med (Capt Watson), Sig (Lt Col Phipps). Subsequent to the conference, Chief Signal Officer (Gen Beck) indicated his concurrence in the rad.

4. The rad proposed and concurred at the above referenced conference contained the following comments and recommendations:

a. The problem in the FBC is not one of a determination of excess but rather one of identification, classification, segregation, and inventorying of property including correction and completion of accurate stock records and repair of certain critical items of Class C group to make them serviceable.

b. Large portion of the disposal of surplus property program having been completed and the withdrawal of property from Korea finished, the initiation of a program to accomplish the task outlined in par a above is the next step and has been directed. Proposed rad states that this directive is being fided by airmail for DA info.

c. Proposed rad states that required in the FBC in the way of temporary assistance is personnel of such technical qualifications that they can conduct on-the-job training of personnel available here but deficient in these qualifications. Such personnel should be placed on TDY with FBC for 6 months and be available for movement within FBC as needed. Required further perfection of personnel both military and civilian, more experienced and skilled to meet the MOS and position reports of current and future as applied particularly to depot personnel for Eng.

d. Eng, Trans, Med, and Sig teams are desired. Teams should be qualified to identify and classify marine spare parts primarily for repair. Sigs personnel should be specialists in packing and repair. Cml and GM teams are not required. Chief of Ordnance will be met by anticipated visit of Col's Webb and Campbell.

e. The personnel offered in WOL 35788 (par 2 above) considered sufficient except that the Eng should be furnished 8 civilians in order to provide for one team in each of the four commands areas.



CONFIDENTIAL

GA File



CONFIDENTIAL

M/R: (cont'd)

f. Proposed rad indicates appreciation for the DA offer of assistance.

5. Proposed rad as outlined in par 4 above is concurred in by G-1 (Gen Beiderlinden) and approved by the C/S and has therefore been dispatched to the DA. No further G-4 action required.

6. This completes action on G-4 Journal #75433.

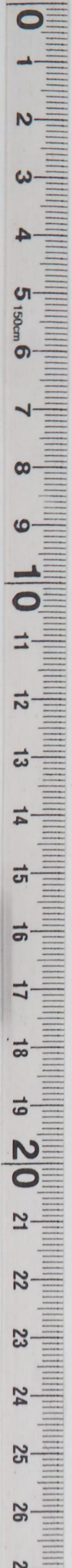
ALD WJ (26-6432)

HAH

EHM 70



CONFIDENTIAL



CONFIDENTIAL

M/R: (cont'd)

1. Proposed rad indicates appreciation for the DA offer of assistance.

2. Proposed rad as outlined in par 4 above is concurred in by G-1 (Gen Beiderlinden) and approved by the G/S and has therefore been dispatched to the DA. No further G-4 action required.

3. This completes action on G-4 Journal #75433

AJD (56-6435)

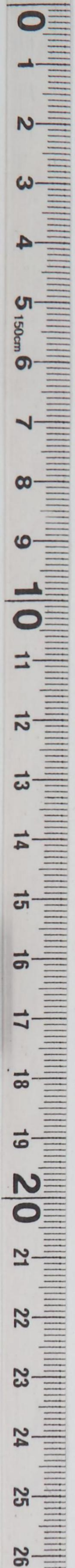
HAH

FHM



CONFIDENTIAL

64710



1. The problem in the FEC is not one of determination of excesses but rather is one of identification, classification, *segregation and inventorying of property including* correction and completion of accurate stock records and repair of certain critical items of Class C group to make them ~~RFL~~ *serviceable*

2. The major portion of the disposal of surplus property program having been completed and the withdrawal of property from Korea finished the initiation of a program to accomplish the task outlined in paragraph 1 is the next step and has been directed. Copy of this directive is being forwarded by air mail for your information.

3. Needed here in the way of <sup>*Temporary*</sup> assistance is personnel of such technical qualifications that they can conduct on the job training of personnel available to FEC ~~which personnel are~~ deficient in these qualifications. Such personnel should be placed on TDY with FEC for six months and be available for movement within FEC as needed. *Needed further is selection of personnel, both military and civilian, more experienced and better qualified to*

4. Engineer, Transportation, Medical and Signal teams desired. Transportation personnel should be qualified to identify and classify ~~General Motors and Buda marine engine~~ *parts*, <sup>*particularly for\**</sup> Signal personnel <sup>*furnished*</sup> should be specialists trained in packing and repairs. Chemical and Quartermaster teams not required. Ordnance requirement <sup>*will*</sup> can be met by <sup>*anticipated*</sup> visit of <sup>*Colonels*</sup> ~~Webb and Campbell for office Chief of Ordnance, officers in Washington.~~ *Webb and Campbell for office Chief of Ordnance.*

*and position.*  
The MOS requirements of current and future requisitions as apply particularly to depot personnel for Engineers.



General Motors, Fairbanks, Superior  
and Buda engines.



5. Personnel offered in WCL 35798  
for four services considered sufficient  
except the Engineer should provide  
eight civilians to provide for one  
team in each of four command  
areas.

6. Offer of ~~assistance~~ by DA in  
~~this apparent problem~~ is appreciated.  
of assistance in solving this problem  
is appreciated.

DECLASSIFIED

Authority NND 975029

1 Clear this item

DAD office

Clear of CS at 1230 - 16 Jan

GENERAL HEADQUARTERS  
FAR EAST COMMAND

CHECK SHEET

(Do not remove from attached sheets) Dean  
Maj ~~XXXX~~ (26-6432)

File No: Subject: Proposed Visit of Inspection Teams  
To Far East Command.

Note  
No.

From: G-4

To: C/S

Date:

(1)

1. At the request of DC/S (TAB A), the Department of the Army by radio WCL 35798, 12 January 49 (TAB B), outlined assistance that Chiefs of Technical Services could render Far East Command in identifying and classifying stocks being retained pursuant to Department of the Army policy.

2. A conference was held at 1600, 14 January 49, attended by GHQ Chiefs of Technical Services concerned or their representatives, to determine the specific aid required by Technical Services. Each representative made specific requests which were incorporated into a reply to the Department of the Army radio (TAB C).

3. Recommend approval of the attached radio in reply to WCL 35798 (TAB C), and return to G-4 for action.

4. Concurrence: G-1 *wu py*

3 Incls  
a/s

*HSE*  
H. E. E.

*16/5*

GENERAL HEADQUARTERS  
FAR EAST COMMAND  
CHECK SHEET

Dear  
Maj KIKEN (38-2482) (Do not remove from attached sheets)

Subject: Proposed Visit of Inspection Team  
To Far East Command.

File No:

Note  
No.

1. As the request of DC/S (TAB A), the Department of the Army by radio WOL 35798, 12 January 49 (TAB B), outlined assistance that Chiefs of Technical Services could render Far East Command in identifying and classifying stocks being retained pursuant to Department of the Army policy.

2. A conference was held at ISOG, 14 January 49, attended by GIG Chiefs of Technical Services concerned or their representatives, to determine the specific aid required by Technical Services. Each representative made specific requests which were incorporated into a reply to the Department of the Army radio (TAB C).

3. Recommend approval of the attached radio in reply to WOL 35798 (TAB C), and return to G-4 for action.

4. Concurrence: G-1 WLN

3 Incls  
a/s



GENERAL HEADQUARTERS, FAR EAST COM AND  
ADJUTANT GENERAL'S OFFICE  
RADIO AND CABLE CENTER

G-4 ROUTING

A C/S G-4	_____
D AC/S G-4	_____
EXECUTIVE	AEM ✓
PLANS & POL	okc ✓
OPERATIONS	<del>_____</del>
CONST & FAC	_____
TRANSPORTATION	_____
SUPPLY	X
PETROLEUM	_____
BUDGET	_____
PERSONNEL	_____
ADMINISTRATION	W ✓

# INCOMING MESSAGE

UNCLASSIFIED  
ROUTINE

12 Jan 49

FROM : DA (CSGLD/D 5)

TO : CINCFE

NR : WCL 35798

Subj insp teams. Matter of sending technically quald pers to FEC to insp and clas dep stocks to determine mats in excess to your needs has been considered by Chiefs of Tech Svs. Matter also discussed with your representative here who favors this action.

C of Engrs recms team of 6 civs. States has made preliminary survey and is anxious to start action.

C of Ord recms team of 1 off and 3 civs but pers presently on dy in FEC considered quald to make nec determination w/o assistance.

C of T recms team of 1 off and 4 civs if reqd.

QMG recms 3 teams of 1 off and 3 civs ea. Does not have pers avail but will hire if desired.

SG recms team of 1 off only in as much as quantity of prop considered to be too small to warrant add pers.

C CmlC recms 1 team of 2 offs. Off said to be on dy in Korea and Hawaii. Very little prop considered to be in theater excess to your needs.

C Sig C recms team of 2 offs. States climatic conditions such as to render mats of little value unless adequately stored and protected. 1 off to work on plant type equip, other on gen sig sups.

Comments and recms requested.

NO SIG

ACTION : G-4

INFORMATION : COMMANDER IN CHIEF, CHIEF OF STAFF, G-1, G-2, AG, SIGNAL, ENGINEER, ORDNANCE, QUARTERMASTER, CHEMICAL, SURGEON, TRANSP

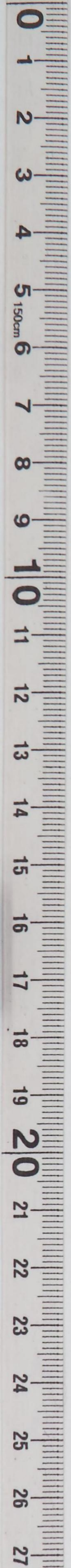
27145

ROUTINE  
UNCLASSIFIED

TOO : 112043 Z  
MCN : AUD 117/11

26-6053

75433



DECLASSIFIED  
Authority NND 975029

SECRET

SECRET

