



Cite this article: Lindeberg H, Burchmore RJS, Kennedy MW. 2017 Pulse of inflammatory proteins in the pregnant uterus of European polecats (*Mustela putorius*) leading to the time of implantation. *R. Soc. open sci.* **4**: 161085. <http://dx.doi.org/10.1098/rsos.161085>

Received: 4 January 2017

Accepted: 22 February 2017

Subject Category:

Biology (whole organism)

Subject Areas:

biochemistry/developmental biology

Keywords:

Mustela putorius, ferret, uterine secretions, pregnancy, α_2 -macroglobulin, lipocalin-1

Author for correspondence:

Malcolm W. Kennedy

e-mail: malcolm.kennedy@glasgow.ac.uk

Electronic supplementary material is available online at <https://dx.doi.org/10.6084/m9.figshare.c.3711982>.

Pulse of inflammatory proteins in the pregnant uterus of European polecats (*Mustela putorius*) leading to the time of implantation

Heli Lindeberg¹, Richard J. S. Burchmore² and Malcolm W. Kennedy³

¹Natural Resources Institute Finland (Luke), Green Technology, Halolantie 31 A, 71750 Maaninka, Finland

²Institute of Infection, Immunity and Inflammation, and Glasgow Polyomics, College of Medical, Veterinary and Life Sciences, University of Glasgow, Garscube Campus, Glasgow G61 1QH, Scotland, UK

³Institute of Biodiversity, Animal Health and Comparative Medicine, and the Institute of Molecular, Cell and Systems Biology, College of Medical, Veterinary and Life Sciences, University of Glasgow, Graham Kerr Building, Glasgow G12 8QQ, Scotland, UK

MWK, 0000-0002-0970-5264

Uterine secretory proteins protect the uterus and conceptuses against infection, facilitate implantation, control cellular damage resulting from implantation, and supply pre-implantation embryos with nutrients. Unlike in humans, the early conceptus of the European polecat (*Mustela putorius*; ferret) grows and develops free in the uterus until implanting at about 12 days after mating. We found that the proteins appearing in polecat uteri changed dramatically with time leading to implantation. Several of these proteins have also been found in pregnant uteri of other eutherian mammals. However, we found a combination of two increasingly abundant proteins that have not been recorded before in pre-placentation uteri. First, the broad-spectrum proteinase inhibitor α_2 -macroglobulin rose to dominate the protein profile by the time of implantation. Its functions may be to limit damage caused by the release of proteinases during implantation or infection, and to control other processes around sites of implantation. Second, lipocalin-1 (also known as tear lipocalin) also increased substantially in concentration. This protein has not previously been recorded as a uterine secretion in pregnancy in any species. If polecat lipocalin-1 has similar biological properties to that of humans, then it may have a combined function in antimicrobial protection and transporting or scavenging lipids. The changes in the uterine

secretory protein repertoire of European polecats is therefore unusual, and may be representative of pre-placentation supportive uterine secretions in mustelids (otters, weasels, badgers, mink, wolverines) in general.

1. Introduction

A conceptus may implant soon after its arrival in the uterus (as in humans and muroid rodents), or may remain free in the uterus for several weeks before implanting (as in equids) [1]. Intermediate to these extremes are the conceptuses of many Carnivora and Artiodactyla which implant 10–20 days after mating. The delay is attributed to time required for mating-induced ovulation, travel through the fallopian tubes, and a variable period during which the blastocyst develops without close cellular contact with maternal tissues [1]. In some species of mustelid, ursids, phocids and roe deer, implantation is postponed for several months, during which time the conceptus enters obligatory diapause at the blastocyst stage and must be maintained and protected until reactivation is permitted by the mother [2–5]. The European polecat, *Mustela putorius* [6], fits into the intermediate group, with an embryonic development period (without embryonic diapause) of approximately 12 days preceding implantation.

Proteins secreted into the non-pregnant uteri of eutherian mammals have a range of presumptive functions such as maintenance of the mucocutaneous surface of the endometrium, antimicrobial protection, receptivity to sperm and the subsequent conceptus, and nutrition of an embryo. Distinct differences have been found among mammal groups in the proteins secreted into the uterus before placentation, although there are commonalities [7–12]. These proteins have been divided mainly into those involved in nutritional support for the conceptus, or in facilitating and controlling implantation events. Perhaps, the most notable example of the nutritional function is the uterocalin/P19 protein in horses. This protein appears to deliver essential lipids such as retinol and polyunsaturated fatty acids across the glycoprotein capsule to the equine conceptus [13–15]. Lipids present a problem in their transfer from mother to conceptus because they tend to be insoluble, and in some cases susceptible to oxidation damage unless protected within a protein binding site. Uterocalin is also notable in that its primary structure is enriched in essential amino acids, which doubles its function as a nutrient source for the developing embryo [15]. Other examples of lipid carriers in uterine secretions include a modified form of plasma retinol binding protein, and serum albumin which binds a range of small molecules, fatty acids in particular [11,16,17]. Of those proteins considered to influence implantation events, the broad-spectrum proteinase inhibitor α_2 -macroglobulin (α_2 M) is secreted into the pregnant uterus around the time of implantation in several species, and, among other roles, is thought to limit tissue damage during implantation and to control local inflammatory responses [7–12,18,19].

Overall, there is considerable diversity in the suite of proteins secreted into pre-placentation uteri by different clades of mammals, as exemplified by equids, artiodactyles and Carnivora, all of which exhibit distinctive repertoires [7–10,12]. We investigated the proteins found in uterine secretions of pregnant European polecats (domesticated as ferrets) in order to explore the preparatory events that lead up to, and at, implantation. Analysis of chronological samples indicated that progressive and dramatic changes in the protein profile occur as the time at which implantation would occur approaches. Some of the proteins have been found in pre-implantation uterine flushes of other species (notable among which is α_2 -macroglobulin), although not in the same combination or relative concentrations. At least one protein, lipocalin-1, which we found to peak in abundance at implantation, has previously not been reported as a uterine secretory protein. Not only does this study demonstrate that mustelids exhibit a different repertoire of implantation-related uterine secretions from other species groups, but it may also provide a general framework for investigation of what happens during embryonic quiescence and subsequent reactivation in species that engage in prolonged embryonic diapause.

2. Material and methods

2.1. Animals and sample collection

The subjects used in this study descended from a population of 70 wild European polecats (*Mustela putorius*) captured in the 1970s and interbred with 200 captive imported domestic ferrets (subspecies *Mustela putorius furo*). The resulting population forms the basis for all polecats farmed for the fur industry and research in Finland. The animals were maintained at the Kannus Research Farm

Luova Ltd., in Kannus, Finland. They were held in individual cages measuring $70 \times 30 \times 38$ cm (length \times width \times height) with nest-boxes measuring $40 \times 29 \times 32$ cm which were accessible to the females but external to the main cage areas. During the breeding season, the animals were exposed to outdoor temperatures and light conditions: mean 2°C and 15 h light in April, 9°C and 16 h light in May, 14°C , and 20 h light in June. The animals were fed according to standards for breeding farmed polecats in Finland (prepared to provide at least $1150\text{--}1250$ kcal kg^{-1} , 40–50% protein, 30–32% fats and 15–25% carbohydrates, supplemented with vitamins and minerals), and had water provided ad libitum.

The time of oestrus was estimated by the physical appearance of the vulva. Males used for mating were known to have been fertile the previous year, and matings were visually confirmed (a tie observed). Animals were selected for sample collection on days 4, 6, 7, 9, 12 and 14 after mating. Those sampled on days 4 and 14 proved not to have become pregnant but were nevertheless included because they acted as mated but non-pregnant controls. Each animal was anaesthetized with medetomidine (Dorbene[®]; Laboratorios syva s.a., León, Spain) and ketamine (Ketalar[®]; Pfizer Oy, Helsinki, Finland), and the uterus removed under sterile surgical conditions. The animals were subsequently euthanized with T-61 (Intervet International B.V., Boxmeer, The Netherlands) while still under anaesthesia. Once the uterus was removed, the tips of each horn were opened, and the cut ends cleared of blood. The cervix was closed with forceps, and the uterus flushed with 5 ml sterile physiological saline through one horn and out the other, with care to avoid blood contamination. The flush fluid was filter-sterilized and frozen at -20°C in approximately 2 ml aliquots. Pregnancy was confirmed by the presence of developing embryos in uterine flushes. Samples were collected from a total of 14 animals, protein gel analysis from all of which is shown in electronic supplementary material, figure S1, and those that were selected for further analysis are indicated in electronic supplementary material, figure S1.

2.2. Protein electrophoresis

One-dimensional vertical sodium dodecyl sulfate polyacrylamide gel electrophoresis (SDS-PAGE) was carried out using the Invitrogen (Thermo Scientific, Paisley, UK) NuPAGE system using precast 4–12% gradient acrylamide gels, with β 2-mercaptoethanol (25 μl added to 1 ml sample buffer) as reducing agent when required. Gels were stained for protein using colloidal Coomassie Blue (InstantBlue, Expedeon, Harston, UK) and images of gels were recorded using a Kodak imager. Electronic images were modified only for adjustment of contrast and brightness. Pre-stained molecular mass/relative mobility (M_r) standard proteins were obtained from New England Biolabs, Ipswich, MA, USA (cat. number P7708S). Samples were run under non-reducing and reducing conditions using β -2 mercaptoethanol as reducing agent. Selected gel slices were taken from non-reduced, Coomassie Blue-stained gels and processed for application to fresh gels under reducing conditions. Samples were concentrated where required using a Vivaspin 3,000 MWCO PES (Sartorius, Epsom, Surrey, UK) centrifugal concentrator device operated according to the manufacturer's instructions.

2.3. Proteomics

Stained protein bands were excised from preparative one-dimensional gels and analysed by liquid chromatography–mass spectrometry as previously described [20]. Protein identifications were assigned using the MASCOT search engine to interrogate protein and gene sequences in the NCBI databases and the *Mustela putorius* genome database [21] and linked resources, allowing a mass tolerance of 0.4 Da for both single and tandem mass spectrometry analyses. BLAST searches, or searches of genome databases of other Carnivora (e.g. dog and giant panda), were carried out to check the annotations. Prediction of secretory leader peptides and their cleavage sites was carried out using SignalP software (<http://www.cbs.dtu.dk/services/SignalP/>; [22]), and molecular masses calculated using ProtParam (<http://web.expasy.org/protparam/>).

3. Results

3.1. Sequential changes in the protein profile of pre-implantation uterine secretions

The protein profiles of all the uterine flush samples collected from days 4 to 14 after mating are shown in the SDS-PAGE analysis in electronic supplementary material, figure S1. The disparities between overall protein concentrations among the samples could be due to differences in efficiency of flushing, changes in the total tissue volume, differences between individual animals' secretion volumes or changes in

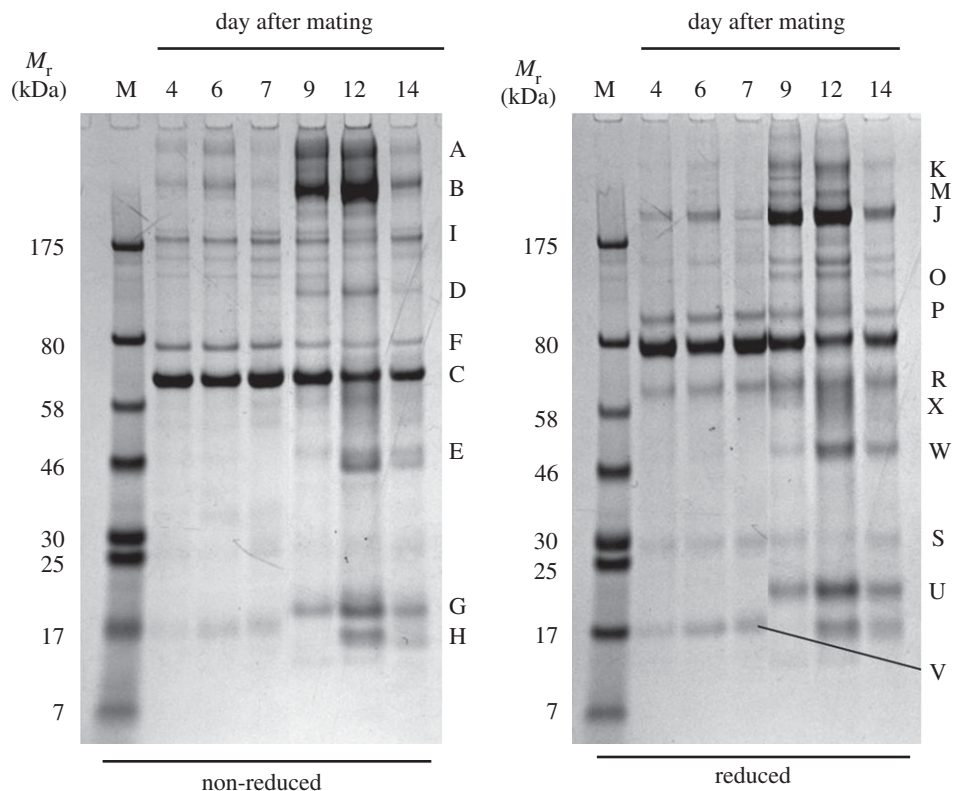


Figure 1. Changes in European polecat uterine secretory proteins with time after mating. Animals sampled on days 4 and 14 were non-pregnant. The sample volumes were adjusted to normalize the intensity of the strong band at approximately 65 kDa (serum albumin). See electronic supplementary material, figure S1, for SDS-PAGE of all of the samples collected and upon which the adjustments were based. Gel band codes are indicated by letters and are referred to in the text and in table 1. The proteins that most clearly increased in concentration with time were α_2 -macroglobulin (uniquely identified in bands A, B, J and K) and lipocalin-1 (uniquely identified in bands G and U). M, marker/calibration proteins with relative mobilities (M_r) as indicated in kilodaltons (kDa).

secretory activity. In order to improve comparability, selected samples were concentrated as described above and/or the volume of loaded sample adjusted to approximately equalize the intensity of the band at *ca* 65 kDa M_r (band C; figure 1), suspected (and subsequently confirmed by mass spectrometry), to be serum albumin from its size and slower migration under reduction.

Standardization of protein concentration to serum albumin revealed dramatic changes in the chronological protein profile of pregnant uterine flushes, in particular the proteins in bands A, B, D, E, G, U and W (figure 1). The pregnant animals on days 6 and 7 showed few, if any, differences from the mated but non-pregnant animal at day 4, but by day 9 considerable differences were evident between pregnant and non-pregnant individuals.

In order to explore relationships between some of the proteins in the most intense bands, gel slices were excised from a non-reduced gel, and the proteins in them subjected to electrophoresis under reducing conditions. This showed that bands A and B reduced to a similar set of proteins, suggesting that they were related or identical (figure 2). The sizes of the resulting fragments were not commensurate with post-reduction cleavage products of large multi-chain immunoglobulins (IgM and IgA) which might be expected to appear in uterine secretions. Protein band C, which was used to standardize the loading protein concentrations of samples for figure 1, migrated more slowly when reduced, which is typical of serum albumin. The change in its migration is usually attributed to cleavage of its intramolecular disulfide bond such that the unfolded protein is retarded in its migration. Similar behaviour was exhibited by band G protein, but the others separated as under non-reducing conditions. The reduction of band C protein uncovered a different protein that was subjected separately to proteomic analysis (band R).

3.2. Proteomics

Protein bands whose concentrations changed dramatically with time after mating, or whose concentrations remained constant, were selected for proteomic analysis from both reducing and

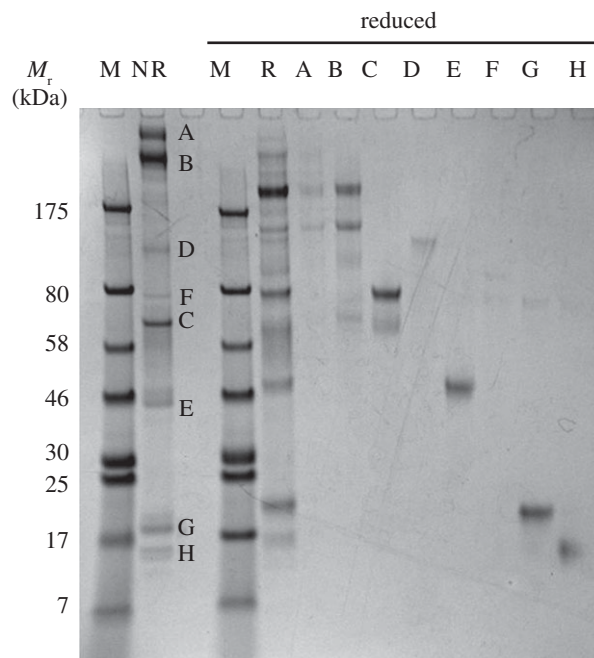


Figure 2. Subunit composition of major proteins in European polecat uterine flush following protein reduction. The labelled bands were excised from a non-reducing preparative SDS-PAGE gel of a uterine flush sample taken from a pregnant animal on day 12 after mating and re-run under reducing conditions. The letter codes for each band are consistent with those in figure 1. The two proteins that most notably increased in concentration with time were α_2 -macroglobulin (bands A and B) and lipocalin-1 (band G). The original protein samples were run under reducing (R) or non-reducing (NR) conditions. M, marker/calibration proteins with relative mobilities (M_r) indicated in kilodaltons (kDa).

non-reducing gels (figure 1). The separation between the bands in the SDS-PAGE gels was sufficient to allow proteomic identification of the proteins with high confidence, all directly from the *M. putorius* genome-derived protein sequence database. The deductions were unchanged upon checking by BLAST searching of genomic and other databases for other Carnivora. Table 1 lists the identifications and also the MASCOT scores and peptide matches of the proteins, and illustrates the high quality of the matches.

The two bands with the highest M_r , bands A and B, were both identified as α_2 -macroglobulin (α_2 M), as was their reduced form in band J. These sizes are larger than expected from the protein's polypeptide mass with its predicted secretory signal peptide removed, and may be due to glycosylation and/or covalent linkage with other entities. The other proteins that appeared at high relative amounts around the time of implantation included lipocalin-1 (bands G, U; also known as tear lipocalin, and an enzyme of the ectonucleotide pyrophosphatase family, also represented in bands D, O), cathepsin L1 (bands E, W), uteroferrin (bands E, H, W) and zinc- α -2-glycoprotein (band W). Transferrin (bands F, P), α 1-antitrypsin (bands C, R, X) and lactoferrin (bands F, P) remained at constant levels relative to serum albumin throughout the sampling period.

4. Discussion

The proteins secreted into the uteri of pregnant European polecats changed dramatically in abundance over the approximately 12 days between mating and the time of implantation by the embryo. The repertoire of proteins shows some similarities with that found in other groups of mammals, presumably reflecting a theme inherited from a common ancestor, or convergent evolution in order to satisfy similar functional requirements. In European polecats, however, the appearance of α_2 M was particularly pronounced, and the appearance of lipocalin-1 has not previously been found.

4.1. α_2 -macroglobulin

α_2 M was the most notable protein to appear in abundance shortly before the time of implantation. It is closely related to pregnancy zone protein (PZP) and three members of the complement system [23]. It is the largest non-immunoglobulin protein in circulation in mammalian blood, comprises an approximately

Table 1. Identification of the proteins isolated from bands excised from the protein electrophoresis gels indicated in figures 1 and 2.

band ^a	protein ^b	mass of protein ^c	database accession code ^d	MASCOT score ^e	number of peptides (unique peptide matches) ^f	function, association, synonyms and comments ^g
A, B, H, I, J, K, M, O	α_2 -macroglobulin	163781.5 (161296.4)	XP_004779762	3502	215 (127)	inhibitor of all classes of proteinase. Bait and trap mechanism triggers enclosure of target proteinase. Thio-ester bond-mediated covalent binding of proteinases. Largest major non-immunoglobulin protein complex in plasma. Acute-phase protein in rats, minor acute phase reactant in other species. Elevated in pregnancy in humans and mice. Controls fetal positioning. Functionally distinct isoforms
C, R, X	α_1 -antitrypsin	46521.2 (44096.2)	XP_004754815	663	51 (26)	serine proteinase inhibitor. Acute-phase reactant
G, U	lipocalin-1	19342.0 (17491.7)	XP_004757035	317	23 (11)	syn. tear lipocalin, von Ebner's gland protein. Lipid transport. Bacterial siderophore-binding. Endonuclease. Cystatin-cysteineyl proteinase inhibitor
W	zinc- α_2 -glycoprotein	36407.5 (34360.9)	XP_004781894	310	22(9)	lipid metabolism signal; adipokine
C	serum albumin	68597.4 (66474.9)	XP_004766346	1425	99 (52)	carrier of fatty acids and other small lipids; other small molecules and drugs; osmotic regulation in circulatory system
F, P	serotransferrin	78378.1 (76408.6)	XP_004762537	849	59 (27)	syn. transferrin. Iron transporter
F, P	lactotransferrin	77327.0 (75354.4)	XP_004761226	509	37 (20)	syn. lactoferrin. Iron capture, antimicrobial, negative regulator in inflammation. Synthesized and stored in neutrophil granules
E, H, W	cathepsin L1	37047.3 (35338.2)	XP_004782389	343	34 (17)	lysosomal. Antigen processing in MHC II pathway. Extracellular matrix modification. Endometrial remodelling
E, H, W	uteroferrin	37645.9 (35353.2)	XP_004748428	464	24 (13)	tartrate-resistant acid phosphatase type 5 (ACP5). Pregnancy-associated acid phosphatase. Synthesized in response to progesterone. Widely conserved uterine protein in mammals. Appears to function in transplacental iron transport and stimulation of erythropoiesis. Human-bone building and remodelling, negative regulator of inflammatory signals
D, O	ectonucleotide pyrophosphatase	109707.5 (none)	XP_004743546	443	60 (19)	ectoenzyme. Bone mineralization and soft tissue calcification. Appears to modulate insulin sensitivity and function; insulin receptor binding
R	legumain	49280.8 (47556.7)	XP_004759089	276	16 (7)	hydrolyses proteins at -Asn-Xaa- site. Multifunctional. Processing of proteins for MHC class II antigen presentation in the lysosomal/endosomal system
V	haemoglobin β	15994.3 (none)	XP_004779082	430	24 (13)	O ₂ /CO ₂ transport and exchange

(Continued.)

Table 1. (Continued.).

band ^a	protein ^b	mass of protein ^c	database accession code ^d	MASCOT score ^e	number of peptides (unique peptide matches) ^f	function, association, synonyms and comments ^g
D, O	galactin-3-binding protein	62371.8 (60418.3)	XP_004748843	281	22 (9)	galectin is a galactose-specific lectin required for terminal differentiation of colunar epithelial cells during early embryogenesis; involved in acute inflammatory responses. Promotes integrin-mediated cell adhesion. May stimulate host defence against viruses and tumour cells
D, O	complement C2	82486.9 (80560.4)	XP_012905650	267	23 (11)	component of the complement system. Cell lysis. Inflammation
S	apolipoprotein A-1	30179.2 (28334.9)	XP_004749957	458	31 (13)	lipid binding. Cholesterol transport. Major protein component of high density lipoprotein (HDL) in plasma. Constituent of milk
I, P	alkaline phosphatase, tissue-non-specific isozyme isoform XI	57449.3 (55717.2)	XP_004741321	135	12 (3)	non-specific phosphomonoesterases possibly involved in cell signalling and bone mineralization. Enzymes of this class found widely in liver, bile duct, kidney, bone, intestinal mucosa and placenta
I	aminopeptidase N	110639.6	XP_012917463	127	12 (4)	broad spectrum aminopeptidase. May be involved in the metabolism of regulatory peptides of diverse cell types. Responsible for the processing of peptide hormones
K, M	IgG Fc-binding protein	234543.3	XP_012918171	401	57 (16)	binds Fc fragment of immunoglobulin G (IgG). May be involved in the maintenance of mucosa structure as a gel-like component of the mucosa
X	cathepsin D	44455.3 (42483.8)	XP_004759751	718	54 (25)	acid protease active in intracellular protein breakdown. Oestrogen-regulated transcript in breast cancer cells
X	uteroferrin-associated basic protein 2	48617.4 (45884.0)	XP_004754814	307	68 (17)	serine proteinase inhibitor

^aGel band codes as indicated in figures 1 and 2.

^bProtein identifications. Peptides matching to keratin were excluded.

^cThe predicted molecular masses, as calculated by ProtParam (<http://web.expasy.org/protparam/>), are of the complete polypeptides encoded before removal of any leader/signal peptides for secretion. The predicted masses following removal of such leader peptides at positions predicted by SignalP is listed in brackets [22]. Note that posttranslational modifications, principally glycosylation, will alter mobility in protein electrophoresis gels.

^dAccession number/reference sequence from NCBI GenBank database for *Mustela putorius* genome database and checked by BLAST searching.

^eMASCOT (MOWSE) search score where scores greater than 38 are taken to be significant. The MASCOT score is the highest value obtained where the protein was identified in more than one band, as were the peptide match values.

^fNumber of peptides found to match with number of peptides unique to this identification in parentheses.

^gPutative functions and comments are drawn from literature cited, or NCBI and UniProtKB/Swiss-Prot databases.

160 kDa polypeptide that is glycosylated, and usually occurs in circulation as a tetramer comprising a pair of non-covalently associated disulfide-linked dimers [23]. It is synthesized mainly in the liver, but also in the decidua and endometrium in mice and possibly also in humans, and is thought to be important for implantation [12,24–27].

$\alpha_2\text{M}$ is a minor acute-phase inflammation reactant in several species [28]. It operates via two mechanisms as a broad-spectrum proteinase inhibitor [23]. In one mechanism, an active proteinase cleaves a bait peptide that causes $\alpha_2\text{M}$ to fold around and encapsulate the target enzyme. In the other, the target proteinase is covalently bound via a thioester bond. These mechanisms trap proteinases of all classes but do not necessarily inactivate them, instead removing them from access to intact proteins.

In acute-phase and inflammatory responses, the proteinases targeted by $\alpha_2\text{M}$ are thought to be those of pathogens, but, significantly, also those released by granulocytes and other immune cells in potentially damaging inflammatory reactions [23]. This function could be directly relevant to placentation, given that the sites of placentation in some mammals exhibit local inflammation-like maternal responses [29–31]. The inflammatory response may be amplified by localized apoptosis of epithelial cells, and proteinase inhibition by $\alpha_2\text{M}$ may minimize damage caused by released enzymes [27,32–37]. $\alpha_2\text{M}$ also binds several hormones, growth factors and cytokines involved in inflammatory responses, and can modify the biological activity of these signalling molecules [19,23]. In pregnancy, $\alpha_2\text{M}$ is found in uterine secretions of several species, and has been described to control trophoblast positioning and overgrowth in the mouse [7–12,18,19].

Several bands in the gels of polecat uterine flushes contained $\alpha_2\text{M}$, ranging in size from close to that of the monomeric glycoprotein (band J) to higher-order structures (dimer, tetramer; bands A and B). Some that did not conform to simple monomers, dimers or tetramers of the protein may be covalent $\alpha_2\text{M}$:proteinase complexes that were not dissembled by the reducing agent (figure 2). The presence of $\alpha_2\text{M}$ in the uterine lumen could be due to increased permeability of the uterine vessels to plasma proteins or tissue disruption. If plasma leakage were to have contributed to the presence of $\alpha_2\text{M}$, as would also be the case for blood contamination during sampling, then other major plasma proteins, such as immunoglobulins and complement C3, would be present in proportionately high amounts. None of these were observed, although serum albumin was clearly present at all times. While this is the most abundant plasma protein in terms of relative molarity, it is found in uterine secretions of other species in the absence of other plasma proteins [8,12]. Moreover, $\alpha_2\text{M}$ is known to be synthesized by uterine tissues in humans and mice (see above).

$\alpha_2\text{M}$ and PZP are closely related proteins. The plasma concentration of PZP increases dramatically in the course of human pregnancy. Its functions are not understood [38], although it is known to have proteinase inhibitory activities similar to those of $\alpha_2\text{M}$ [38,39]. Despite PZP's documented synthesis in several reproductive tissues [38], and that a gene encoding a PZP homologue has been predicted in the European polecat genome (NCBI accession XP_012906269.1), our analysis identified no protein that might be identified as PZP in the uterine flushes.

4.2. Lipocalin-1

The appearance of lipocalin-1 was unexpected, as it has not previously been described as a component of uterine secretions. Moreover, while other lipocalins have been described in the reproductive tissues of other species, only lipocalin-1 was found in this study of polecat uterine secretions. Also known as tear lipocalin and von Ebner's gland protein, lipocalin-1 is a member of a large family of proteins that operates predominately extracellularly. In addition to its eponymous presence in tears, lipocalin-1 has been found in a wide range of tissues [40], albeit not in uterine secretions.

Most lipocalins bind small hydrophobic ligands such as retinol, fatty acids, odorants or pheromones, and some are enzymatic [40,41]. Others are involved in infection defence, such as α_1 -acid glycoprotein (orosomucoid), which is an acute-phase protein in humans that binds a range of small lipophilic molecules and drugs. Lipocalin-2 (neutrophil gelatinase-associated lipocalin) is also an acute-phase protein and binds bacterial siderophores [42,43]. Lipocalins associated with reproduction include progesterone-associated endometrial protein (glycodelin, pregnancy-associated endometrial α_2 -globulin, placental protein 14) secreted by the human endometrium from mid-luteal phase of the menstrual cycle and during the first trimester of pregnancy; a salivary lipocalin found in pigs is secreted into their uteri at the time of implantation [44]; and equine uterocalin is secreted by the endometrium of mares in the pre-placentation period, during which the equine conceptus is confined within a glycoprotein capsule [13,14]. Despite all these examples of lipocalins found in reproductive tissues in other species, lipocalin-1 was the only one found in our European polecat samples.

The biochemical properties of lipocalin-1 are known only from the human form, which binds small lipids such as fatty acids and sterols [40]. The protein may therefore be involved in delivering or scavenging lipids at a time when there is significant tissue reorganization and potential for cellular disruption at implantation, as is speculated for the role of porcine salivary lipocalin [8]. Lipocalin-1, like lipocalin-2, is known to bind bacterial siderophores, so it may function as part of the innate immune system in an anti-bacterial role [40,45]. Human lipocalin-1 also has been recorded as having cysteinyl proteinase inhibitory activity [46], and nuclease activity that can operate against viral genomes [47,48]. The polecat protein may therefore have multiple protective roles in the uterus, as is thought for its function in tears and epithelia in humans [40,49].

Taken together, these observations suggest that lipocalin-1 may work alongside α_2M to protect the uterine environment against infections, and its lipid-binding may involve sequestration of toxic lipid peroxidation products created under condition of oxidative stress [50].

4.3. Tissue-protective and embryo support proteins

In addition to α_2M and lipocalin-1, we identified several additional proteins that may protect the uterus against infection and tissue damage associated with implantation. These include the iron-binding proteins lactoferrin (lactotransferrin) and transferrin (serotransferrin), both of which were present at fairly constant levels throughout the sampling period. Lactoferrin in particular is associated with antimicrobial activity by sequestering iron in milk, it is also synthesized and stored in neutrophil granules [51], and it directly attacks bacterial membranes and has anti-viral activity [52–56].

α_1 -antitrypsin was also present throughout, and increased in concentration slightly with time. This is an inhibitor of serine proteinases, is a major acute-phase reactant in humans, and is increasingly recognized as an anti-inflammatory mediator [57]. Its primary function appears to be protection against excessive proteolysis of tissues (e.g. in the lower respiratory tract) by neutrophil elastase in inflammation [58,59]. It has been observed in pregnant uteri of other species, possibly to control proteinases released during tissue remodelling, trophoblast invasion, apoptosis or inflammatory processes that may accompany placentation [60,61].

Other proteins increased with time. Cathepsin L1, a cysteinyl proteinase, is usually confined to lysosomes and is involved in MHC class II antigen processing. Its expression level in uterine tissues is progesterone-dependent, and its importance in placentation has been recognized [60,62,63]. Other progesterone-dependent proteins that appeared in the polecat uterine fluid included a member of the ectonucleotide pyrophosphatase family (a lysophospholipase that may be involved in the production of pharmacologically active lipid mediators), and uteroferrin (pregnancy-associated acid phosphatase, which appears to function in transplacental iron transport and stimulation of erythropoiesis) [16,64–70].

Curiously, we did not find any dedicated nutrient carrier protein similar to equine uterocalin that might act to support a developing conceptus during a pre-placentation period. Equine uterocalin may, however, be a special adaptation in equids to provide resources for a large, capsule-enclosed conceptus during a prolonged pre-placentation period. Nothing like it has been found in non-equids. Mustelid blastocysts do have extended placentation periods, and they can even distend the uterus before they implant, but they have no glycoprotein capsule intervening between their surfaces and the endometrial surface [6]. Moreover, the surface to volume ratios of mustelid conceptuses are substantially smaller than in equids at maximum growth such that they may not need a specialized nutrient carrier. Equine uterocalin and lipocalin-1 bind a similar set of small lipids [15,40], but the former is atypically enriched in essential amino acids [15], a feature that is not true of lipocalin-1. We did, however, find other lipid carriers that may supply the polecat conceptus with lipids, such as serum albumin and apolipoprotein A-I.

4.4. Conclusion

The protein secretory response of the pre-implantation phase of pregnancy that we observed in European polecats appears primarily to prevent infection, facilitate implantation and protect against release of deleterious cellular components associated with the tissue trauma of implantation. Some of the lipid-binding proteins we found may also be involved in maternal:embryo communication by transporting insoluble signalling molecules such as progesterone, prostaglandins and leukotrienes, or their precursors (as postulated for equine uterocalin; [13,15]). It has recently been argued that embryonic diapause is phylogenetically conserved and not secondarily acquired by embryos of diapausing species [2]. It is therefore conceivable that a common ancestor of mustelids that includes European polecats engaged in

embryonic diapause. It would therefore now be interesting to establish whether species of mustelid that exhibit prolonged obligatory embryonic diapause (e.g. stoats, otters, badgers) show a similar protein secretory response as European polecats during the period when diapausing blastocysts are free in the lumen and devoid of haemotrophic support, or when reactivation of blastocysts occurs and implantation is imminent.

Ethics. The sample collections from animals were approved by the National Animal Experiment Board (Eläinkoelautakunta, ELLA) of Finland. Importation of uterine secretions from European polecats into Scotland was approved under a licence from the Environment and Rural Affairs Department of the Scottish Executive.

Data accessibility. Our data are deposited in the Dryad Digital Repository at <http://dx.doi.org/10.5061/dryad.45p94> [71].

Authors' contributions. M.W.K. and H.L. conceived, designed and organized the study. H.L. collected the samples. M.W.K. and R.J.S.B. carried out or oversaw the experiments, collected and analysed the data. M.W.K. wrote the manuscript in consultation with the other authors. All authors saw and approved the final submitted version.

Competing interests. The authors declare that they have no competing interests.

Funding. This study was supported by the Department of Biosciences, University of Eastern Finland (H.L.) and the University of Glasgow (M.W.K. and R.J.S.B.).

Acknowledgements. We are most grateful to Anitta Helin who took care of the polecats, checked on mating success, and assisted with sample collection, and also to Suzanne McGill for expert technical assistance with the proteomics analysis. Particular thanks go to Dr Kati Loeffler of the International Fund for Animal Welfare, who critically reviewed the manuscript and contributed a considerable number of excellent suggestions and changes.

References

- Wooding FBP, Burton GJ. 2008 *Comparative placentation: structures, functions and evolution*. Berlin, Germany: Springer.
- Ptak GE, Tacconi E, Czernik M, Toschi P, Modlinski JA, Loi P. 2012 Embryonic diapause is conserved across mammals. *PLoS ONE* **7**, e33027. (doi:10.1371/journal.pone.0033027)
- Murphy BD. 2012 Embryonic diapause: advances in understanding the enigma of seasonal delayed implantation. *Reprod. Domest. Anim.* **47**, 121–124. (doi:10.1111/rda.12046)
- Lopes FL, Desmarais JA, Murphy BD. 2004 Embryonic diapause and its regulation. *Reproduction* **128**, 669–678. (doi:10.1530/rep.1.00444)
- Fenelon JC, Banerjee A, Murphy BD. 2014 Embryonic diapause: development on hold. *Int. J. Dev. Biol.* **58**, 163–174. (doi:10.1387/ijdb.140074bm)
- Enders AC, Schlafke S. 1972 Implantation in the ferret: epithelial penetration. *Am. J. Anat.* **133**, 291–315. (doi:10.1002/aja.1001330305)
- Ye T-M, Pang RTK, Leung CON, Chiu J-F, Yeung WSB. 2015 Two-dimensional liquid chromatography with tandem mass spectrometry-based proteomic characterization of endometrial luminal epithelial surface proteins responsible for embryo implantation. *Fertil. Steril.* **103**, 853–861. (doi:10.1016/j.fertnstert.2014.12.110)
- Kayser JPR, Kim JG, Cerny RL, Vallet JL. 2006 Global characterization of porcine intrauterine proteins during early pregnancy. *Reproduction* **131**, 379–388. (doi:10.1530/rep.1.00882)
- Smits K *et al.* 2016 Proteome of equine oviducal fluid: effects of ovulation and pregnancy. *Reprod. Fertil. Dev.* Epub ahead of print. (doi:10.1071/RD15481)
- Hayes MA *et al.* 2012 Changes in various endometrial proteins during cloprostenol-induced failure of early pregnancy in mares. *Anim. Reprod.* **9**, 723–741.
- Soleilhavou C *et al.* 2016 Proteomes of the female genital tract during the oestrous cycle. *Mol. Cell. Proteomics* **15**, 93–108. (doi:10.1074/mcp.M115.052332)
- Hannan NJ, Stephens AN, Rainczuk A, Hincks C, Rombauts LJF, Salamonsen LA. 2010 2D-DiGE analysis of the human endometrial secretome reveals differences between receptive and non-receptive states in fertile and infertile women. *J. Proteome Res.* **9**, 6256–6264. (doi:10.1021/pr1004828)
- Suire S, Stewart F, Beauchamp J, Kennedy MW. 2001 Uterocalin, a lipocalin provisioning the preattachment equine conceptus: fatty acid and retinol binding properties, and structural characterization. *Biochem. J.* **356**, 369–376. (doi:10.1042/bj3560369)
- Stewart F, Kennedy MW, Suire S. 2000 A novel uterine lipocalin supporting pregnancy in equids. *Cell. Mol. Life Sci.* **57**, 1373–1378. (doi:10.1007/PL00000622)
- Kennedy MW. 2005 Uterocalin—provider of essential lipids and amino acids to the pre-implantation equine conceptus. *Havemeyer Foundation Monogr. Series* **16**, 53–56.
- Vallet JL, Christenson RK, McGuire WJ. 1996 Association between uteroferrin, retinol-binding protein, and transferrin within the uterine and conceptus compartments during pregnancy in swine. *Biol. Reprod.* **55**, 1172–1178. (doi:10.1095/biolreprod55.5.1172)
- Vallet JL, Christenson RK. 1996 The effect of estrone and estradiol treatment on endometrial total protein, uteroferrin, and retinol-binding protein secretion during midpregnancy or midpseudopregnancy in swine. *J. Anim. Sci.* **74**, 2765–2772. (doi:10.2527/1996.7412765x)
- Croy BA *et al.* 2003 Update on pathways regulating the activation of uterine Natural Killer cells, their interactions with decidual spiral arteries and homing of their precursors to the uterus. *J. Reprod. Immunol.* **59**, 175–191. (doi:10.1016/S0165-0378(03)00046-9)
- Esadeg S, He H, Pijnenborg R, Van Leuven F, Croy BA. 2003 Alpha-2 macroglobulin controls trophoblast positioning in mouse implantation sites. *Placenta* **24**, 912–921. (doi:10.1016/S0143-4004(03)00148-6)
- Griffiths K *et al.* 2015 Prolonged transition time between colostrum and mature milk in a bear, the giant panda, *Ailuropoda melanoleuca*. *R. Soc. Open Sci.* **2**, 150395. (doi:10.1098/rsos.150395)
- Peng X *et al.* 2014 The draft genome sequence of the ferret (*Mustela putorius furo*) facilitates study of human respiratory disease. *Nat. Biotechnol.* **32**, 1250. (doi:10.1038/nbt.3079)
- Petersen TN, Brunak S, von Heijne G, Nielsen H. 2011 SignalP 4.0: discriminating signal peptides from transmembrane regions. *Nat. Methods* **8**, 785–786. (doi:10.1038/nmeth.1701)
- Rehman AA, Ahsan H, Khan FH. 2013 Alpha-2-macroglobulin: A physiological guardian. *J. Cell. Physiol.* **228**, 1665–1675. (doi:10.1002/jcp.24266)
- Bao L, Devi S, Bowen-Shauver J, Ferguson-Gottschall S, Robb L, Gibori G. 2006 The role of interleukin-11 in pregnancy involves up-regulation of alpha(2)-macroglobulin gene through janus kinase 2-signal transducer and activator of transcription 3 pathway in the decidua. *Mol. Endocrinol.* **20**, 3240–3250. (doi:10.1210/me.2006-0296)
- Siu S-SN *et al.* 2006 Lack of site-specific production of decidual alpha-2 macroglobulin in human pregnancy. *J. Soc. Gynecol. Invest.* **13**, 491–496. (doi:10.1016/j.jsjg.2006.06.003)
- Sayegh RA *et al.* 1997 Endometrial alpha-2 macroglobulin; localization by in situ hybridization and effect on mouse embryo development in vitro. *J. Clin. Endocrinol. Metab.* **82**, 4189–4195.
- Gu Y *et al.* 1992 Alpha-2-macroglobulin expression in the mesometrial decidua and its regulation by decidual luteotropin and prolactin. *Endocrinology* **131**, 1321–1328.
- Kuribayashi T, Seita T, Momotani E, Yamazaki S, Hagimori K, Yamamoto S. 2015 Elimination

- half-lives of acute phase proteins in rats and beagle dogs during acute inflammation. *Inflammation* **38**, 1401–1405. (doi:10.1007/s10753-015-0114-4)
29. Dekel N, Gnainsky Y, Granot I, Racicot K, Mor G. 2014 The role of inflammation for a successful implantation. *Am. J. Reprod. Immunol.* **72**, 141–147. (doi:10.1111/aji.12266)
 30. Ott TL *et al.* 2014 Maternal immune responses to conceptus signals during early pregnancy in ruminants. *Anim. Reprod.* **11**, 237–245.
 31. van Mourik MSM, Macklon NS, Heijnen CJ. 2009 Embryonic implantation: cytokines, adhesion molecules, and immune cells in establishing an implantation environment. *J. Leukoc. Biol.* **85**, 4–19. (doi:10.1189/jlb.0708395)
 32. Siwetz M, Blaschitz A, El-Heliebi A, Hiden U, Desoye G, Huppertz B, Gauster M. 2016 TNF- α alters the inflammatory secretion profile of human first trimester placenta. *Lab. Invest.* **96**, 428–438. (doi:10.1038/labinvest.2015.159)
 33. Prabhudas M *et al.* 2015 Immune mechanisms at the maternal-fetal interface: perspectives and challenges. *Nat. Immunol.* **16**, 328–334. (doi:10.1038/ni.3131)
 34. Koets AP. 1995 The equine endometrial cup reaction—a review. *Veter. Q.* **17**, 21–29. (doi:10.1080/01652176.1995.9694525)
 35. Noronha LE, Antczak DF. 2010 Maternal immune responses to trophoblast: the contribution of the horse to pregnancy immunology. *Am. J. Reprod. Immunol.* **64**, 231–244. (doi:10.1111/j.1600-0897.2010.00895.x)
 36. Noronha LE, Huggler KE, de Mestre AM, Miller DC, Antczak DF. 2012 Molecular evidence for natural killer-like cells in equine endometrial cups. *Placenta* **33**, 379–386. (doi:10.1016/j.placenta.2012.01.018)
 37. Pampfer S, Donnay I. 1999 Apoptosis at the time of embryo implantation in mouse and rat. *Cell Death Differ.* **6**, 533–545. (doi:10.1038/sj.cdd.4400516)
 38. Tayade C, Esadeg S, Fang Y, Croy BA. 2005 Functions of alpha 2 macroglobulins in pregnancy. *Mol. Cell. Endocrinol.* **245**, 60–66. (doi:10.1016/j.mce.2005.10.004)
 39. Chiabrando GA, Vides MA, Sanchez MC. 2002 Differential binding properties of human pregnancy zone protein- and alpha(2)-macroglobulin-proteinase complexes to low-density lipoprotein receptor-related protein. *Arch. Biochem. Biophys.* **398**, 73–78. (doi:10.1006/abbi.2001.2659)
 40. Dartt DA. 2011 Tear lipocalin: structure and function. *Ocul. Surf.* **9**, 126–138. (doi:10.1016/S1542-0124(11)70022-2)
 41. Flower DR, North ACT, Sansom CE. 2000 The lipocalin protein family: structural and sequence overview. *Biochim. Biophys. Acta Protein Struct. Mol. Enzymol.* **1482**, 9–24. (doi:10.1016/S0167-4838(00)00148-5)
 42. Flo TH *et al.* 2004 Lipocalin 2 mediates an innate immune response to bacterial infection by sequestering iron. *Nature* **432**, 917–921. (doi:10.1038/nature03104)
 43. Berger T, Togawa A, Duncan GS, Elia AJ, You-Ten A, Wakeham A, Fong HEH, Cheung CC, Mak TW. 2006 Lipocalin 2-deficient mice exhibit increased sensitivity to *Escherichia coli* infection but not to ischemia-reperfusion injury. *Proc. Natl Acad. Sci. USA* **103**, 1834–1839. (doi:10.1073/pnas.0510847103)
 44. Seo H, Kim M, Choi Y, Ka H. 2011 Salivary lipocalin is uniquely expressed in the uterine endometrial glands at the time of conceptus implantation and induced by interleukin-1 β in pigs. *Biol. Reprod.* **84**, 279–287. (doi:10.1095/biolreprod.110.086934)
 45. Fluckinger M, Haas H, Merschak P, Glasgow BJ, Redl B. 2004 Human tear lipocalin exhibits antimicrobial activity by scavenging microbial siderophores. *Antimicrob. Agents Chemother.* **48**, 3367–3372. (doi:10.1128/AAC.48.9.3367-3372.2004)
 46. Hof WVT, Blankenvoorde MFJ, Veerman ECI, Amerongen AVN. 1997 The salivary lipocalin von Ebner's gland protein is a cysteine proteinase inhibitor. *J. Biol. Chem.* **272**, 1837–1841. (doi:10.1074/jbc.272.3.1837)
 47. Yusifov TN, Abduragimov AR, Gasmov OK, Glasgow BJ. 2000 Endonuclease activity in lipocalins. *Biochem. J.* **347**, 815–819. (doi:10.1042/bj3470815)
 48. Yusifov TN *et al.* 2008 Tear lipocalin is the major endonuclease in tears. *Mol. Vis.* **14**, 180–188.
 49. Redl B *et al.* 1998 Identification of a lipocalin in mucosal glands of the human tracheobronchial tree and its enhanced secretion in cystic fibrosis. *Lab. Invest.* **78**, 1121–1129.
 50. Lechner M, Wojnar P, Redl B. 2001 Human tear lipocalin acts as an oxidative-stress-induced scavenger of potentially harmful lipid peroxidation products in a cell culture system. *Biochem. J.* **356**, 129–135. (doi:10.1042/bj3560129)
 51. Martin L, Meegern A, Doemming S, Schuerholz T. 2015 Antimicrobial peptides in human sepsis. *Front. Immunol.* **6**, 404. (doi:10.3389/fimmu.2015.00404)
 52. Brouwer CPJM, Rahman M, Welling MM. 2011 Discovery and development of a synthetic peptide derived from lactoferrin for clinical use. *Peptides* **32**, 1953–1963. (doi:10.1016/j.peptides.2011.07.017)
 53. Wada Y, Lönnerdal B. 2014 Bioactive peptides derived from human milk proteins—mechanisms of action. *J. Nutr. Biochem.* **25**, 503–514. (doi:10.1016/j.jnutbio.2013.10.012)
 54. Vogel HJ. 2012 Lactoferrin, a bird's eye view. *Biochem. Cell Biol.* **90**, 233–244. (doi:10.1139/o2012-016)
 55. Abril Garcia-Montoya I, Cendón TS, Arévalo-Gallegos S, Rascón-Cruz Q. 2012 Lactoferrin a multiple bioactive protein: An overview. *Biochim. Biophys. Acta General Subjects* **1820**, 226–236. (doi:10.1016/j.bbagen.2011.06.018)
 56. Valenti P, Antonini G. 2005 Lactoferrin: an important host defence against microbial and viral attack. *Cell. Mol. Life Sci.* **62**, 2576–2587. (doi:10.1007/s00118-005-5372-0)
 57. Bergin DA, Reeves EP, Hurley K, Wolfe R, Jameel R, Fitzgerald S, McEvaney NG. 2014 The circulating proteinase inhibitor alpha-1 antitrypsin regulates neutrophil degranulation and autoimmunity. *Sci. Transl. Med.* **6**, 217ra1. (doi:10.1126/scitranslmed.3007116)
 58. McEvaney NG, Hubbard RC, Birrer P, Crystal RG, Chernick MS, Frank MM, Caplan DB. 1991 Aerosol alpha-1-antitrypsin treatment for cystic-fibrosis. *Lancet* **337**, 392–394. (doi:10.1016/0140-6736(91)91167-5)
 59. Birrer P, McEvaney NG, Rådeberg A, Sommer CW, Liechti-Gallati S, Kraemer R, Hubbard R, Crystal RG. 1994 Protease-antiprotease imbalance in the lungs of children with cystic-fibrosis. *Am. J. Respir. Crit. Care Med.* **150**, 207–213. (doi:10.1164/ajrccm.150.1.7912987)
 60. Li WG, Jaffe RC, Fazleabas AT, Verhage HG. 1991 Progesterone-dependent cathepsin L proteolytic activity in cat uterine flushings. *Biol. Reprod.* **44**, 625–631. (doi:10.1095/biolreprod44.4.625)
 61. Geisert RD, Blair RM, Pratt T, Zavy MT. 1997 Characterization and proteolytic activity of a cathepsin L-like polypeptide in endometrium and uterine flushings of cycling, pregnant and steroid-treated ovariectomized gilts. *Reprod. Fertility Dev.* **9**, 395–402. (doi:10.1071/R96106)
 62. Varanou A, Withington SL, Lakasing L, Williamson C, Burton GJ, Hemberger M. 2006 The importance of cysteine cathepsin proteases for placental development. *J. Mol. Med.* **84**, 305–317. (doi:10.1007/s00109-005-0032-2)
 63. Screen M, Dean W, Cross JC, Hemberger M. 2008 Cathepsin proteases have distinct roles in trophoblast function and vascular remodelling. *Development* **135**, 3311–3320. (doi:10.1242/dev.025627)
 64. Ahn HJ, Jeung EB. 2011 Distinct expression and regulation of ectonucleotide pyrophosphatase/phosphodiesterase 2 and its potential role(s) in the uterus of rats during estrous cycle. *Reprod. Fertility Dev.* **23**, 191. (doi:10.1071/RDv23n1Ab178)
 65. Ahn H-J, Yang H, An B-S, Choi K-C, Jeung E-B. 2011 Expression and regulation of Enpp2 in rat uterus during the estrous cycle. *J. Vet. Sci.* **124**, 379–385. (doi:10.4142/jvs.2011.12.4.379)
 66. Ahn H-J, Yang H, An B-S, Choi K-C, Jeung E-B. 2011 Expression and regulation of Enpp2 in rat uterus during the estrous cycle. *J. Vet. Sci.* **12**, 379–385. (doi:10.4142/jvs.2011.12.4.379)
 67. Hood BL *et al.* 2015 Proteomics of the human endometrial glandular epithelium and stroma from the proliferative and secretory phases of the menstrual cycle. *Biol. Reprod.* **92**, 106. (doi:10.1095/biolreprod.114.12717)
 68. Carter AM, Enders AC. 2013 The evolution of epitheliochorial placentation. In *Annual review of animal biosciences*, vol. 1 (eds HA Lewin, RM Roberts), pp. 443–467. Palo Alto, CA: Annual Reviews. (doi:10.1146/annurev-animal-031412-103653)
 69. Ellenberger C, Wilsher S, Allen WR, Hoffmann C, Kölling M, Bazer FW, Klug J, Schoon D, Schoon H-A. 2008 Immunolocalisation of the uterine secretory proteins uterocalin, uteroferrin and uteroglobulin in the mare's uterus and placenta throughout pregnancy. *Theriogenology* **70**, 746–757. (doi:10.1016/j.theriogenology.2008.04.050)
 70. Ying W, Wang H, Bazer FW, Zhou B. 2014 Pregnancy-secreted acid phosphatase, uteroferrin, enhances fetal erythropoiesis. *Endocrinology* **155**, 4521–4530. (doi:10.1210/en.2014-1397)
 71. Lindeberg H, Burchmore RJS, Kennedy MW. 2017 Pulse of inflammatory proteins in the pregnant uterus of European polecats (*Mustela putorius*) leading to the time of implantation. Dryad Digital Repository. (<http://dx.doi.org/10.5061/dryad.45p94>)