

DETROIT POLICE DEPARTMENT

ANNUAL REPORT

1974



29163



Prepared and compiled by;

Analysis and Planning Division

Special assistance by:

General Information Section

Photos: Detroit Free Press.....DFP
 Detroit News..... DN
 Detroit Police Department DPD

TABLE OF CONTENTS

	<u>Page</u>
Board of Police Commissioners - photograph	1
Board of Commissioners' Letter to Mayor of Detroit . . .	2
Organizational Chart	3
City Map	4
Chief of Police and Staff - photograph	5
Division Commanders - photograph	6
Highlights of 1974	7
Police Chief's Letter to Board of Commissioners	8
Bureau Descriptions	9 - 11
. The Front Line Police	
. Citizen Expectations of Police Performance	
. Services to Members	
. Fact Finders and Their Support	
. Tomorrow's Participants	
. Interpreters of the Police Scene	
Department Activities - 1974	12 - 23
. Homicide	
. Assault	
. Rape	
. Robbery	
. Burglary	
. Larceny	
. Auto Theft	
. Narcotics	
. Aviation	
. Canine	
. Crime Lab	
. Organized Crime	
. Juveniles	
. Traffic	
. Communications	
. Personnel	
. Internal Controls	
"We All Remember"	24
In Memoriam	25 - 26
Department Honor Medal Awards	27
Operating Statement	28
Police Personnel - Age & Seniority	29
Police Department - Personnel & Assignment	30
Selected Statistics	31

Work Accomplished & Miles Traveled - By Precinct	32
Number & Disposition of Offenses Known - Part I	33
Number & Disposition of Offenses Known - Part II	34
Criminal Offenses - 5 year Comparison	35
Offenses Reported in Detail - 3 year period	36
Disposition of Offenses - Month, Day, Hour	37 - 39
Major Offenses by Precinct - Part I	40
Major Offenses by Precinct - Part I (continued)	41
Major Offenses by Precinct - Part II	42
Robbery - Object of Attack	43
Burglary - Object of Attack	44
Larceny - Object of Attack	45
Persons Charged - Age, Sex, Race	46
Arrest Dispositions - 3 year period	47
Arrests Resulting in Prosecution	48
25 Year Comparison - Crime/Prosecution Arrests	49
Traffic Violations by Precinct & Section of Office	50
Ordinance Violations Other than Traffic	51
Youth Services Bureau - Offenses by Precinct	52
Youth Services Bureau - Offenses (continued)	53



DOUGLAS FRASER
Chairman

Board of Police Commissioners



CHARLES W. BUTLER
Vice Chairman



EDWARD J. LITTLEJOHN



SUSAN COOPER



ALEXANDER B. RITCHIE



TONI JONES
Executive Secretary



LLOYD POWELL
Chief Investigator



*Department of Police
Detroit, Michigan 48226*

*Coleman A. Young, Mayor
City of Detroit*

March 21, 1975

The Honorable
Mayor Coleman A. Young
City Council
City-County Building
Detroit, Michigan 48226

Ladies and Gentlemen:

The Board of Police Commissioners herewith submits the Annual Report of the Detroit Police Department for 1974.

The report contains information relating to the operations of this department and describes the most important activities occurring during 1974. As you will note, the men and women of the Detroit Police Department continue to render an invaluable service to the citizens of this great city.

The Board of Police Commissioners wishes to extend its sincere thanks to you and all the people of the City of Detroit for the assistance and cooperation given us during the past year.

Respectfully yours,

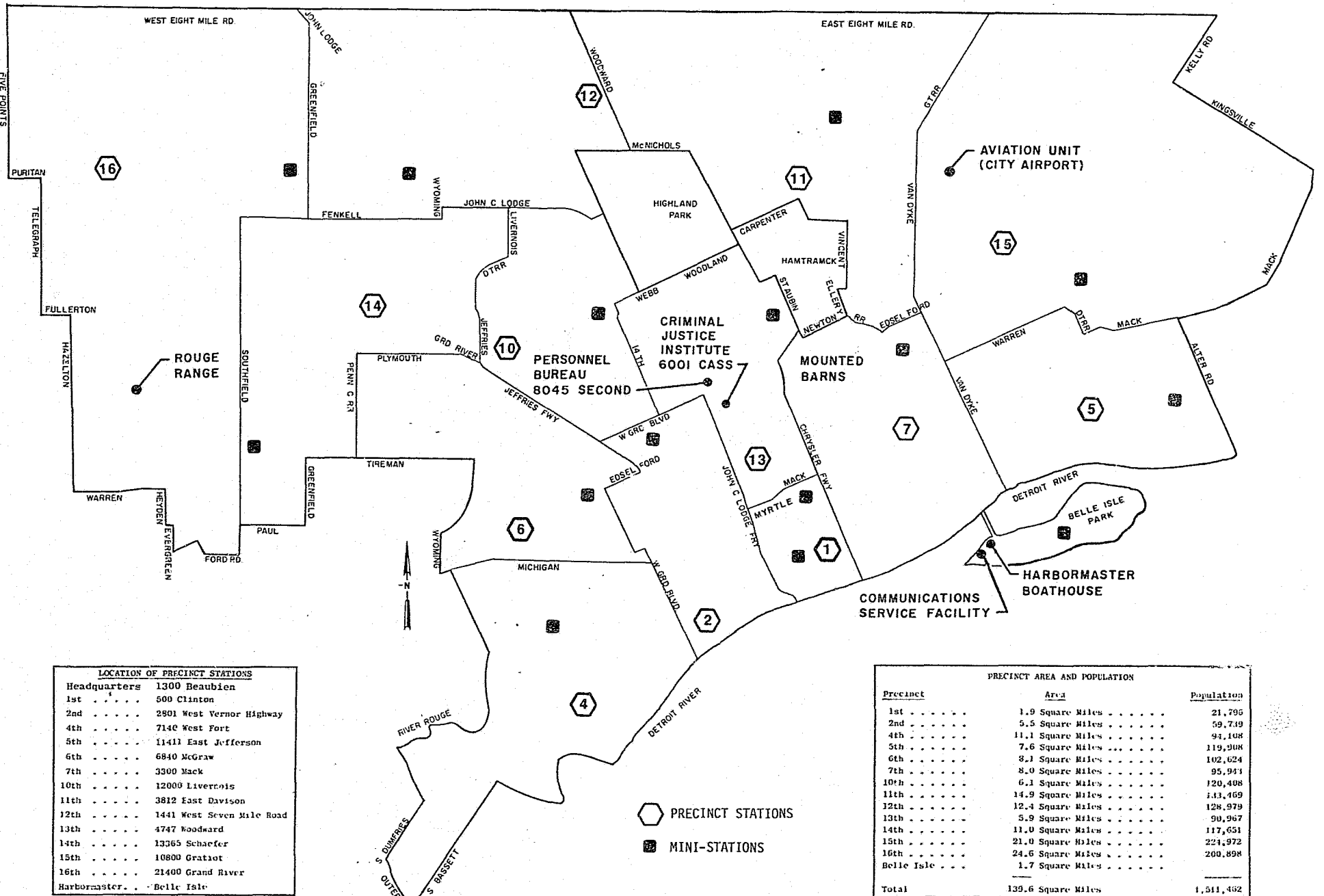
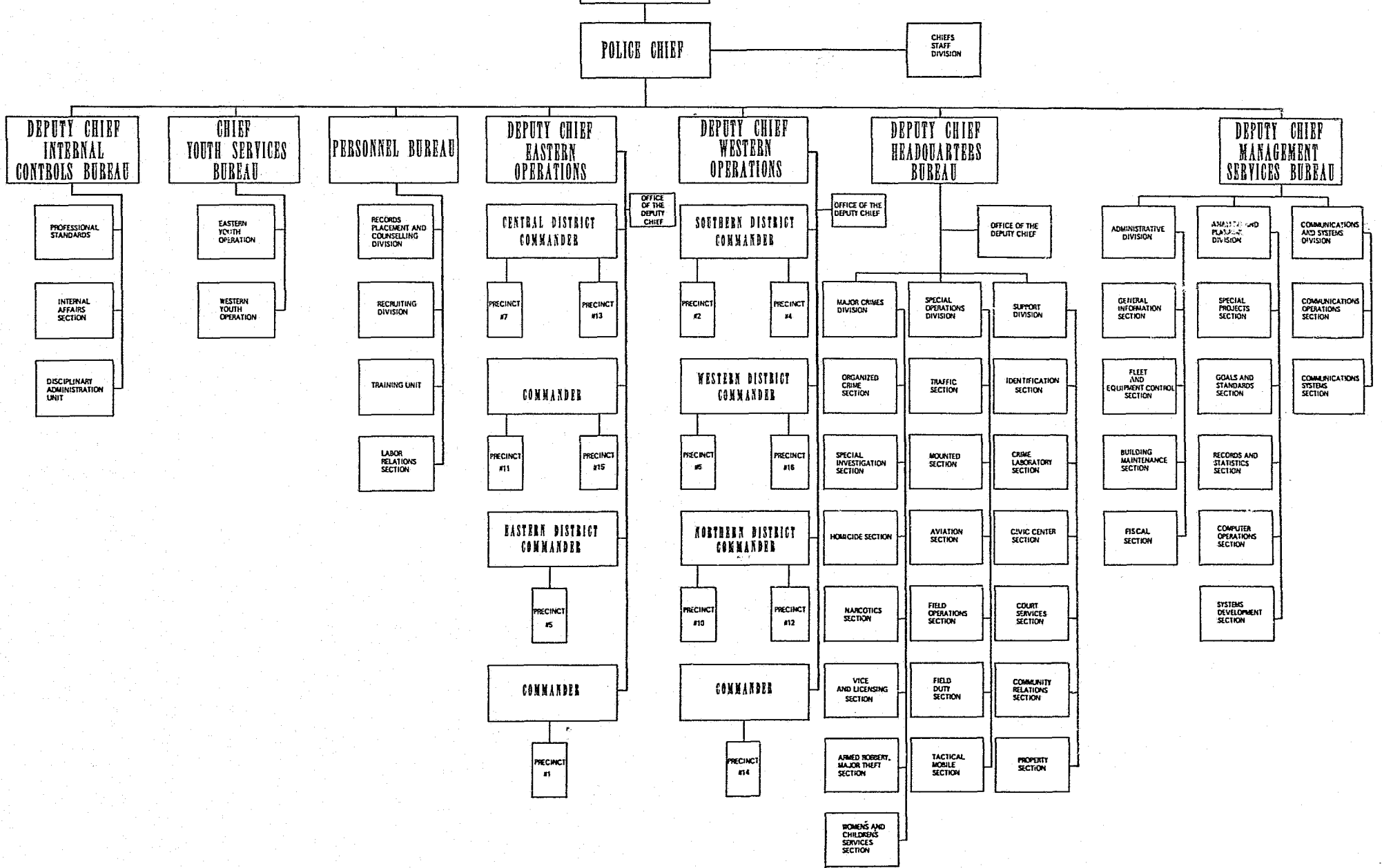
BOARD OF POLICE COMMISSIONERS

Toni Jones
TONI JONES
Executive Secretary

Detroit Police Department

BOARD OF POLICE COMMISSIONERS

Organizational Interim Chart





DEPUTY CHIEF
GEORGE BENNETT



EXECUTIVE ASSISTANT
WALTER DOUGLAS



DEPUTY CHIEF
GORDON SMITH

Department Executives



DEPUTY CHIEF
EDWARD WALSH



CHIEF
PHILIP G. TANNIAN



DEPUTY CHIEF
WILLIAM HART



DEPUTY CHIEF
FRANK BLOUNT



DEPUTY CHIEF
THEODORE SIENSKI



JOSEPH AREEDA
5th Precinct



CLIFTON CASEY
7th Precinct



FREDERICK AUNER
15th Precinct



JAMES BANNON
2nd Precinct



CHARLES JACKSON
12th Precinct



WILLIAM CORBETT
14th Precinct

Department Commanders



GEORGE JACKSON
11th Precinct



RUSSELL GALLAWAY
Support Division



GERALD HALE
MAJOR CRIMES DIVISION



HENRY MAJESKI
1st Precinct



JACOB MARTIN
16th Precinct



CLIFFORD RYAN
Communications and Systems
Division



JOHN TSAMPIKOU
Analysis and Planning



GILBERT TRUAX
Special Operations



MARTIN MITTON
Administrative Division



THOMAS FERREE
Recruiting Division

Retired Executives

ANTHONY BERTONI	Superintendent
WILLIAM MORRIS	Chief
JOHN BOWYER	Chief
ROLAND ROBERTS	Chief
STANLEY RICH	Chief

SYLVESTER LINGEMAN	Commander
HENRY JASON	Commander
FRANCIS ARBANAS	Commander
EDWARD ROHN	Commander

THE DETROIT POLICE DEPARTMENT - 1974

The Facts as Recorded . . .

received 1,880,839 calls for service
dispatched 769,630 response units
recovered 19,147 stolen cars
confiscated 6,664 handguns and destroyed 6,292 hand and long guns with a street value of \$290,350
processed 131,662 fingerprint records
flew 6,341 hours and responded to 11,431 radio runs and special assignments
issued 545,846 tickets
contributed \$29,873.19 to the Goodfellow Fund and pledged \$50,963.68 to the United Foundation Torch Drive
received 126,262 hours of volunteer service from the Police Reserves
recorded a 20% decrease in traffic fatalities; 183 lives lost in 1974 compared to 226 in 1973 . . .

. . . The Special Event . . .



Two years of security planning preceded the 1974 World Energy Conference hosted by the City of Detroit. 4,500 participants from 69 nations attended the one week conference which occurred without any record of incident.



Department of Police
Detroit, Michigan 48226

Coleman A. Young, Mayor
City of Detroit

March 21, 1975

The Honorable Board of Police Commissioners
1300 Beaubien
Detroit, Michigan 48226

Gentlemen:

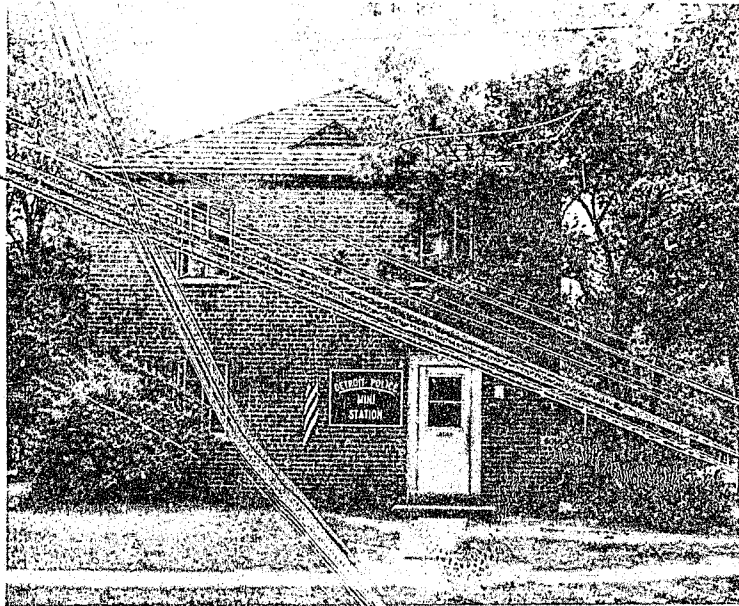
This is the first annual report prepared for the Board of Police Commissioners, created by mandate of Detroit's new City Charter on July 1, 1974. The five member board acts as the policy making body of the department. The following report outlines the police services and activities provided and performed for Detroit's citizens in 1974.

During the year, a large scale reorganization of the department structure was begun with the emphasis on greater service to the citizen. Decentralization of specialized bureaus, greater responsibility at the precinct command level, and the transfer of 1,000 police officers to precinct duties were the goals of the reorganization. As of December 31, 1974, these goals were well on their way to accomplishment.

Seven Department Bureaus (Internal Controls, Youth Services, Personnel, Eastern and Western Operations, Headquarters and Management Services) each deal with a specialized area of concern.

THE FRONT LINE POLICE

Eastern Operations
Western Operations



DPD



DN

Thirteen police precincts, combined geographically into two operational districts, provide initial response service to citizens through patrol, investigative, and special operations functions. The precinct is the principal target of the reorganization, and three precincts were reorganized during the year to reflect the decentralized, citizen service orientation of the department. The precinct command structure has been altered, allowing for specialized reaction to the particular needs of that precinct community. Investigative Operations teams speed to crime scenes, quickly freeing the patrol response cars for other emergency calls. This new concept has cut police response time in half in some precincts. Fifteen mini-stations were opened in 1974, at least one in each precinct, and they act as extensions of the mother precinct. The first female rookies assigned to routine street patrol work in precincts seven and twelve.

CITIZEN EXPECTATIONS OF POLICE PERFORMANCE

Internal Controls Bureau

A restructured and renamed Professional Standards Section (formerly Citizens Complaint) affords citizens greater flexibility in the registering of complaints of improper police officer conduct and a faster investigation time frame than ever before. The Internal Affairs Section works to assure the integrity of the department, and the Disciplinary Administration Unit acts as the coordination point for disciplinary procedures.

SERVICES TO THE MEMBERS

Personnel Bureau

This Bureau is a new concept located in new quarters. Coordination of recruiting, training and placement functions for both police and civilian personnel offers prospective, active and retired employees comprehensive personnel services and information. Now in the developmental stage is a career counseling phase to assure growth potential and skill recognition for employees. In 1974 . . . a firm commitment was made to affirmative action in recruitment, placement and promotion practices.

FACT FINDERS AND THEIR SUPPORT

Headquarters Bureau

The squad concept is now utilized in the investigation of major crimes, utilizing collective expertise for investigations of Rapes, Robberies and Homicides. The operation is supported by forensic scientists, identification and fingerprint experts, in some instances, prosecuting attorneys specifically assigned to cases, and the investigative tools of the Grand Jury. Specialized police response forces are part of this bureau and can react with aircraft, special motorized forces, the mounted patrol, and a special canine unit.



DFP

TOMORROW'S PARTICIPANTS

Youth Services Bureau

The once separate Youth Bureau and Women's Division are now consolidated male-female action teams responding to the needs of troubled youth. Civilian Youth Advisors work to prevent delinquency.



DPD

INTERPRETERS OF THE POLICE SCENE

Management Services Bureau

The Management Services Bureau is a consolidation of previously fragmented or non-existent department management services. All fiscal management and policy emanates from the Administrative Division, where an annual police budget of almost \$158 million is handled on a full-time basis. A new Fleet and Equipment Control Section inventories and allocates all department equipment and office space. The Analysis and Planning Division responds to the needs of management in three separate areas: Goals and Standards, Special Projects, and Systems Development. The Communications and Systems Division is responsible for the operation of the 911 emergency telephone system. Installation and servicing of all city electronic equipment is done at the division's Belle Isle Radio facility.

DPD



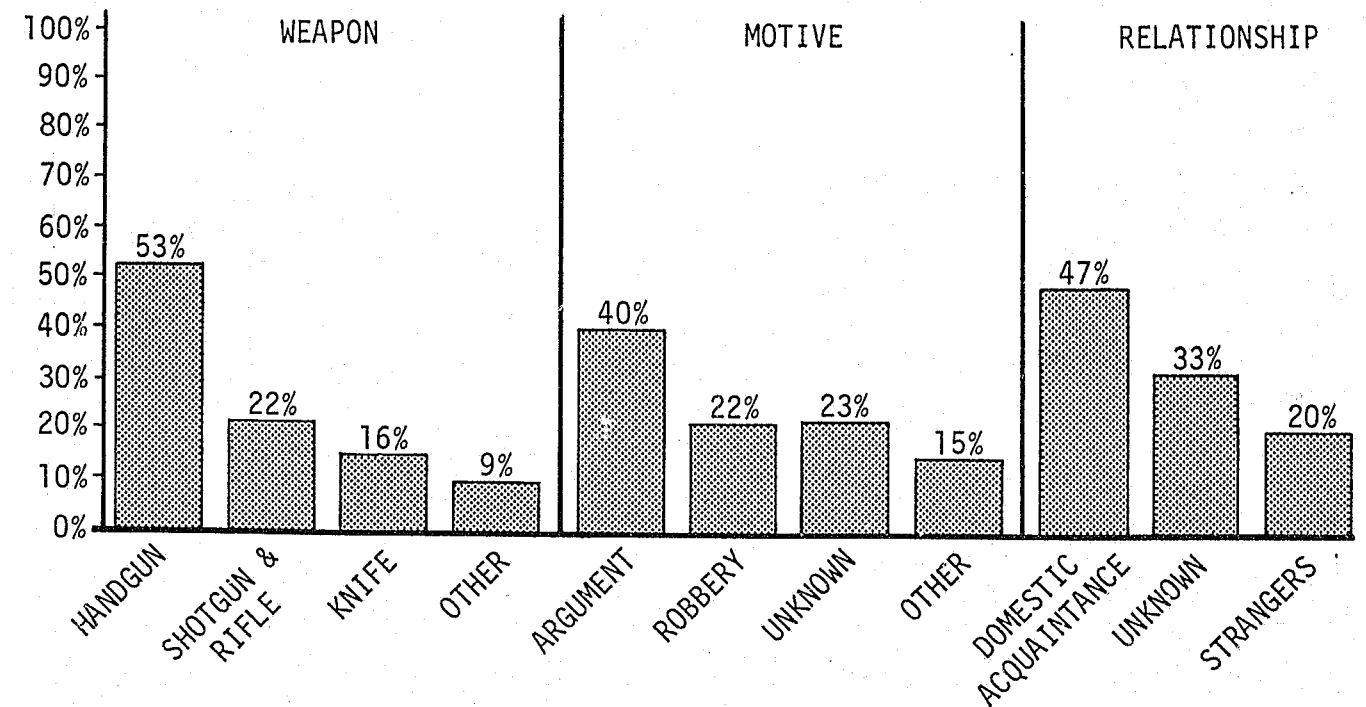
DEPARTMENT ACTIVITIES - 1974

-Homicide-

Toward the aim of consolidation of investigative efforts for similar or related types of criminal acts, an organization concept grouping the "person" crimes and the "property" crimes is being developed. Armed robberies, sex crimes, and homicides will be processed by teams of specialists. The new program became operational in investigations of homicides.

Under a squad concept, the members concentrate on a certain type of homicide and incorporate the expertise of investigators from various fields into their procedures. All members of the squad are familiarized with all cases assigned to the squad. Input from each individual investigator is encouraged. For example, Squad 6 concerns itself with narcotics-related and "execution style" homicides, while Squad 7 investigates felony-related homicides.

1974 DETROIT HOMICIDES



-Assaults-

As the crime of homicide rose 6.3 percent, the crime of assault rose 5.9 percent. Frequently the only difference between homicide and assault is the lack of fatality due to intervention, medical care, or lack of a lethal weapon, and it is reasonable to assume that the factors affecting one should affect the other.

Members of the department participated in the Social Conflict Task Force, a community - criminal justice - city government work group attempting to develop an effective crisis intervention training program for local law enforcement personnel.

-Rape-

Members of the department assisted in the development and implementation of new sex crime legislation which redefined sex crimes to strengthen prosecutions and afford better protection for victims. Crime analysts from the Women's and Children's Services Section provided abundant data for the developers of the new legislative package. More and more frequently, rape is a crime occurring in relation to other crimes, such as homicide and robbery.

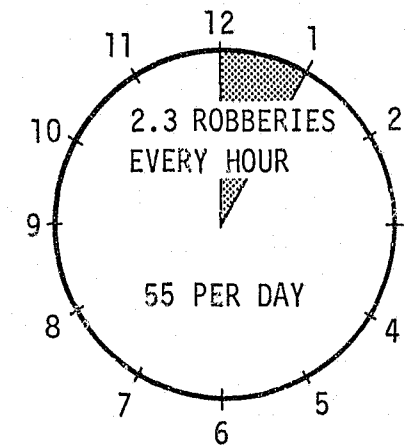
1974 RAPE ANALYSIS		MN-3AM	3AM-6	6AM-9	9AM-12	12PM-3	3PM-6	6PM-9	9PM-MN
B&E RAPE ROB IN HOME	107	27	32	16	1	7	10	8	6
B&E RAPE IN HOME	118	35	36	11	5	4	12	6	9
RAPE IN HOME NO B&E	257	54	31	14	7	28	43	33	47
STREET RAPE & ROBBERY	110	29	11	15	2	3	6	15	29
STREET RAPE/NO ROBBERY	236	54	11	23	14	16	19	34	65
KIDNAP/RAPE, FORCED IN CAR	283	95	37	16	10	10	11	26	78
RAPE IN BUSINESS PLACE	37	5	0	0	3	7	11	4	7
RAPE ACCEPTED RIDE, ETC.	125	50	21	2	3	5	9	11	24
TOTALS	1273*	349	179	97	45	80	121	137	265

A particular M.O. of a Detroit crime gang, recognized by a team of rape analysts, led to the apprehension of eleven men responsible for 60 rapes, over 200 burglaries, 41 robberies and 11 homicides.

* Differs from official Uniform Crime reporting figure due to some offenses initially being reported as other types of crimes -- a reporting difficulty now being brought to the attention of the public by rape crisis action groups.

-Robbery-

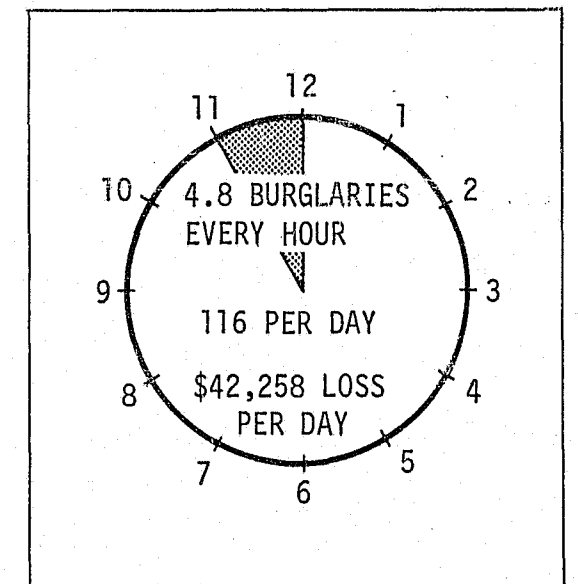
The majority of robberies are armed and are committed against individuals. It is the "person" crime that occurs with the most frequency within the city, and the one which terrorizes individuals to the same degree, regardless of whether the weapon is real, threatened, or in the form of bodily force. It is a 24-hour a day crime that occurs in any alley, on any street or in any business place.



Neighborhood groups and business alliances are developing programs to assist in the prevention of the "person" crime. Some groups, such as the Associated Food Dealers, work with the direction of police experts. Others, such as the Citizen's Crusade Against Crime, are independent organizations that offer services to citizens on how to prevent certain crimes, and in instances where crimes are committed, advise citizens on how to best assist authorities in the apprehension of the perpetrator.

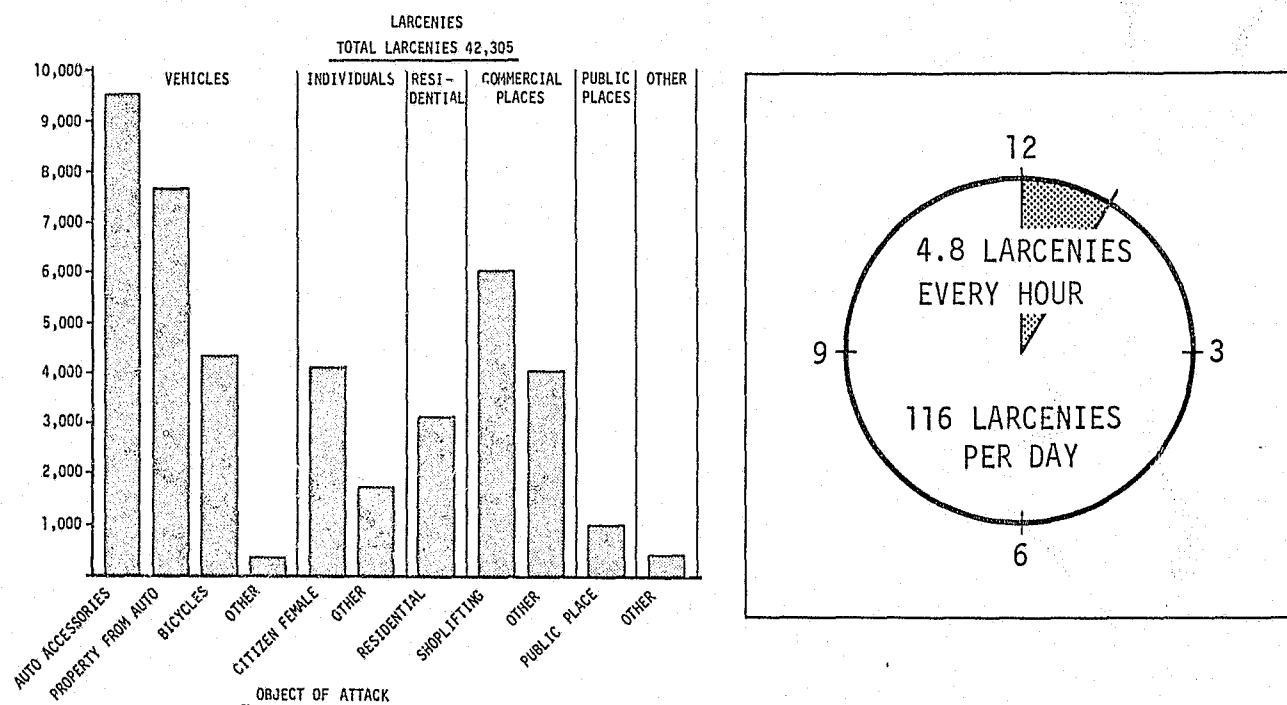
-Burglary-

"B & E", the "property" crime that affects many citizens, is one that is also being attacked by the citizens. Department representatives regularly talk to citizen groups on matters of home security, personal article identification and other crime prevention topics. The department is committed to a massive investigative/surveillance effort to reduce the incidence of B&E in the city. Hundreds of hours of stake-out, pattern analysis and interrogation brought one "fence" to court -- closing the million dollar operation he ran by buying and selling the "hot" burglary loot.

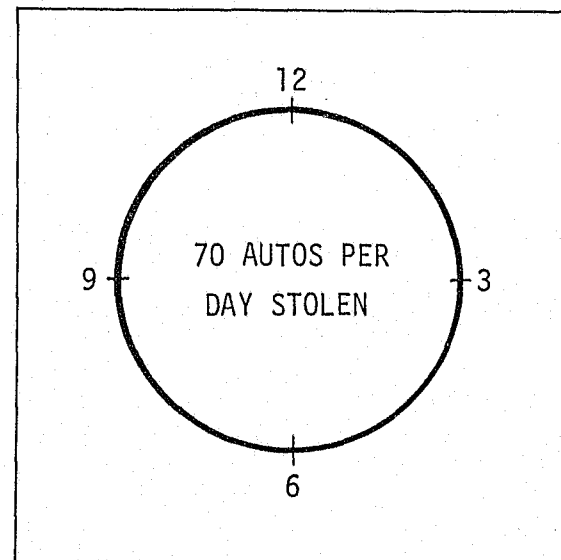


-Larceny-

The number of reported larcenies increased 25.2 percent over 1973. This category of crime, however, is one that would be expected to show an increase with easier access to the police through the 911 emergency telephone system. The largest category of larcenies is theft from inside automobiles or of auto accessories and items from the car itself. Nearly half of the reported larcenies fall into this category. The theft of bicycles accounts for nearly 12 percent of the larcenies, and larceny from a person - female (purse-snatching, etc.) accounts for an additional 11 percent.



-Auto Theft-



A newly created Auto Theft Unit emphasizes more thorough investigation and follow-up. For instance, every auto theft complainant was called by an investigator 30 days after the initial report was made. This resulted in more complaints being closed than in previous years, since owners often fail to report that they've recovered their own vehicles. 25,583 cars were reported stolen in 1974, and 19,147 were recovered. Files are now maintained with information on persons with a record of, or suspected of, auto theft activities.

-Narcotics-

This year also was marked by a new emphasis placed on the enforcement of narcotics laws in Detroit. In order to have greater impact on the problems of narcotic abuse, the Narcotic Section altered its enforcement policy from low level dealers to the middle and upper echelon of the drug hierarchy. As the result of this policy, joint enforcement actions were entered into with the Drug Enforcement Administration of the U. S. Department of Justice. In one such joint action, which was originated by our Narcotic Section, thirteen violators were arrested and twelve pounds of heroin and four pounds of cocaine were confiscated. This cooperation also resulted in an increase in the number of court cases and in better intelligence information gathered on key figures involved in drug transactions. There has been a significant increase in the number of court cases and convictions, in the amount of heroin and cocaine confiscated, in the amount of narcotic proceeds seized, and at the same time, there has been a marked reduction in the number of cases dismissed in court.

NARCOTICS
PERSONS ARRESTED BY TYPE OF DRUG USED

DRUG USED	UNDER 16	17-24	25-32	33-40	40 PLUS	1974	1973	1972
HEROIN	1	724	750	227	111	1813	2058	2112
METHADONE	0	47	45	9	10	111	164	168
MARIHUANA	13	1135	333	57	29	1567	1268	1004
AMPHETAMINES	0	6	5	2	0	13	34	34
BARBITURATES	0	28	7	7	1	43	33	36
COCAINE	0	27	32	4	9	72	89	83
OTHER OPIATES	0	1	5	0	0	6	3	12
HALLUCINOGENS	0	20	0	0	0	20	13	16
QUAALUDE	0	0	0	0	0	0	8	0
...NON-USERS	2	368	228	61	55	714	2803	5856
UNK...IF USER	648	2231	949	273	131	4232	2964
1974 TOTAL	664	4587	2354	640	346	8591
1973 TOTAL	682	5234	2426	691	404	9437
1972 TOTAL	517	5214	2476	717	397	9321

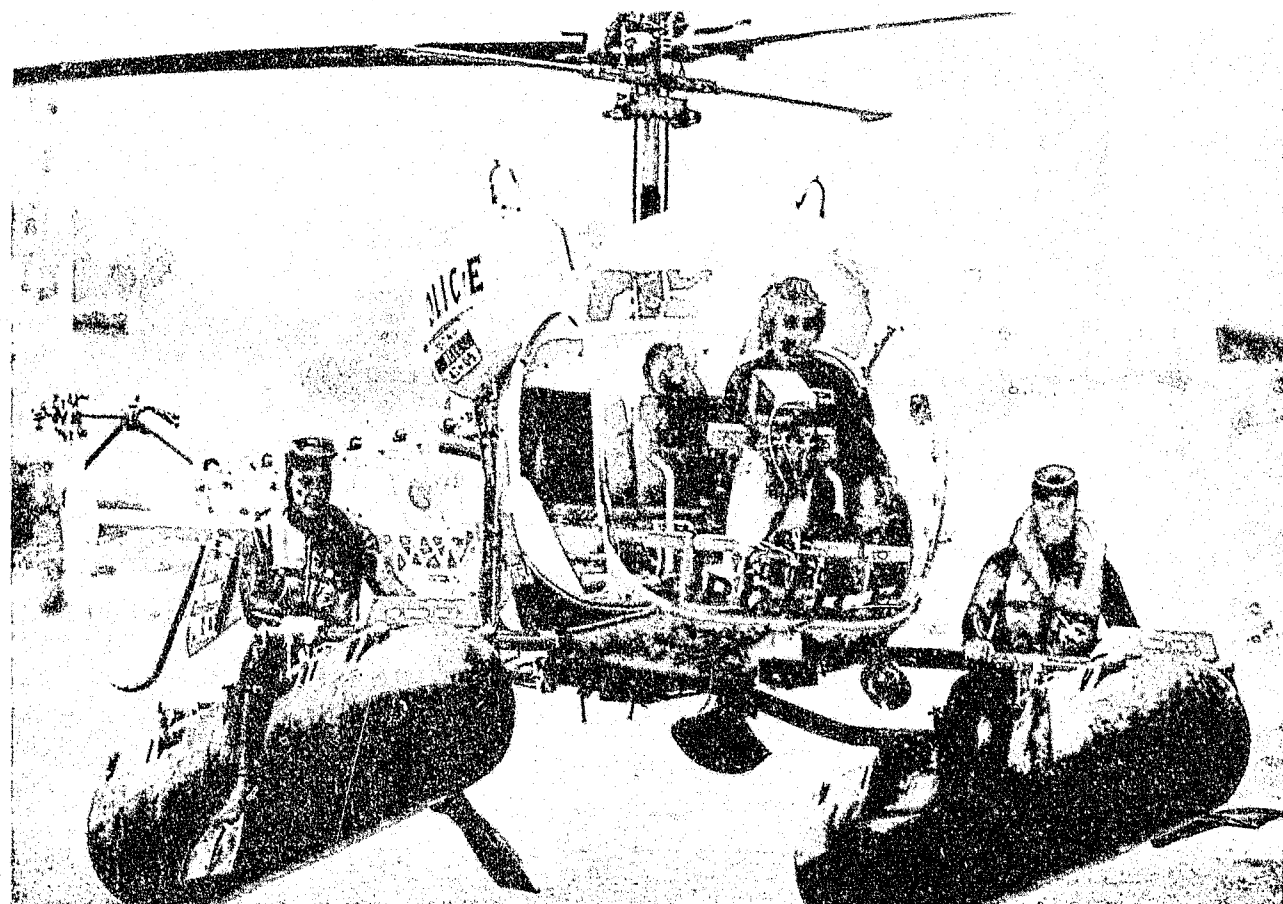
ARRESTS OF DRUG USERS DIMINISHED AS EFFORTS WERE CONCENTRATED ON UPPER-LEVEL, DRUG SUPPLY ACTIVITIES.

A new procedure under which violations involving minimal amounts of marijuana are handled in Traffic Court was implemented during 1974. This greatly alleviated the caseload in Recorder's Court and substantially reduced department man-hours required for court appearances.

-Aviation-

The Detroit Police Department Aviation Section grew in size during 1974 with the acquisition of four additional helicopters. This allowed the section to divide the city into four air patrol sectors and to provide additional support to ground patrol units on a city-wide basis. In addition, the Aviation Section flies regularly scheduled traffic patrols over the city's freeways and reports traffic conditions directly to area broadcast stations over the newly-established Police Information Network (P.I.N.).

DPP



In the Spring of 1974, a float-equipped helicopter began regular patrol of the Detroit riverfront and since that time, seven persons have been rescued by the helicopter crews.

DPP

Airborne officers responded to 894 robbery runs, 2,036 B&E locations, 2,295 alarms, and 1,271 other runs, with an average of one arrest for every 4.55 runs.

-Canine-

Specially trained department dogs track humans from crime scenes, sniff for narcotics and search buildings for explosives. They tracked in 49 cases of armed robbery resulting in 15 arrests.



-Crime Lab-

Utilizing the expertise of both police and civilian employees, the Crime Lab provides the forensic services essential in any police operation. Not only does the Lab have the capability to strengthen cases, but frequently provides the only evidence linking a suspect to a crime. A glove print, perspiration from a shoe left at a murder scene, and saliva from a sealed envelope provided the serology-trace evidence technicians with some of their more unusual and challenging clues this year.

DPP



DPP



EVIDENCE TECHNICIANS ARE SPECIALLY TRAINED, THEN ASSIGNED TO INVESTIGATION SECTIONS OF THE DEPARTMENT. THEY RESPOND IN FULLY-EQUIPPED MOBILE CRIMES VANS AND PROVIDE IMMEDIATE CRIME SCENE EVIDENCE SEARCH.

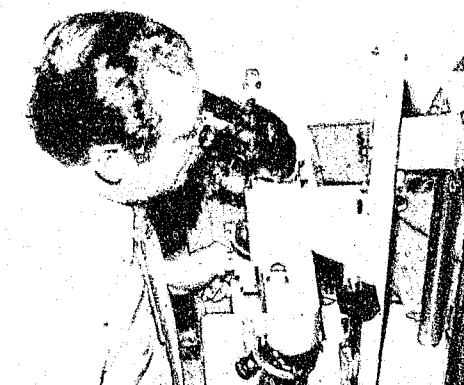
DPP

As a matter of routine, 2,845 suspected seminal stains, 9,036 articles of evidence with possible blood stains, and 3,100 microscopic examinations of hair and fiber were conducted.

DPP



A TOTAL ANALYSIS OF A SUSPECTED NARCOTIC, INCLUDING A WRITTEN REPORT OF THE FINDINGS, IS PRODUCED IN TWO MINUTES.



COMPARISONS OF TEST SHOTS FROM ROUTINELY CONFISCATED WEAPONS CLOSED 13 OPEN FILE CASES.

Narcotic analysis, now performed for Detroit as well as for other local communities, will be processed faster since a mass spectrometer/gas chromatograph combination with an automatic data retrieval system arrived in December.

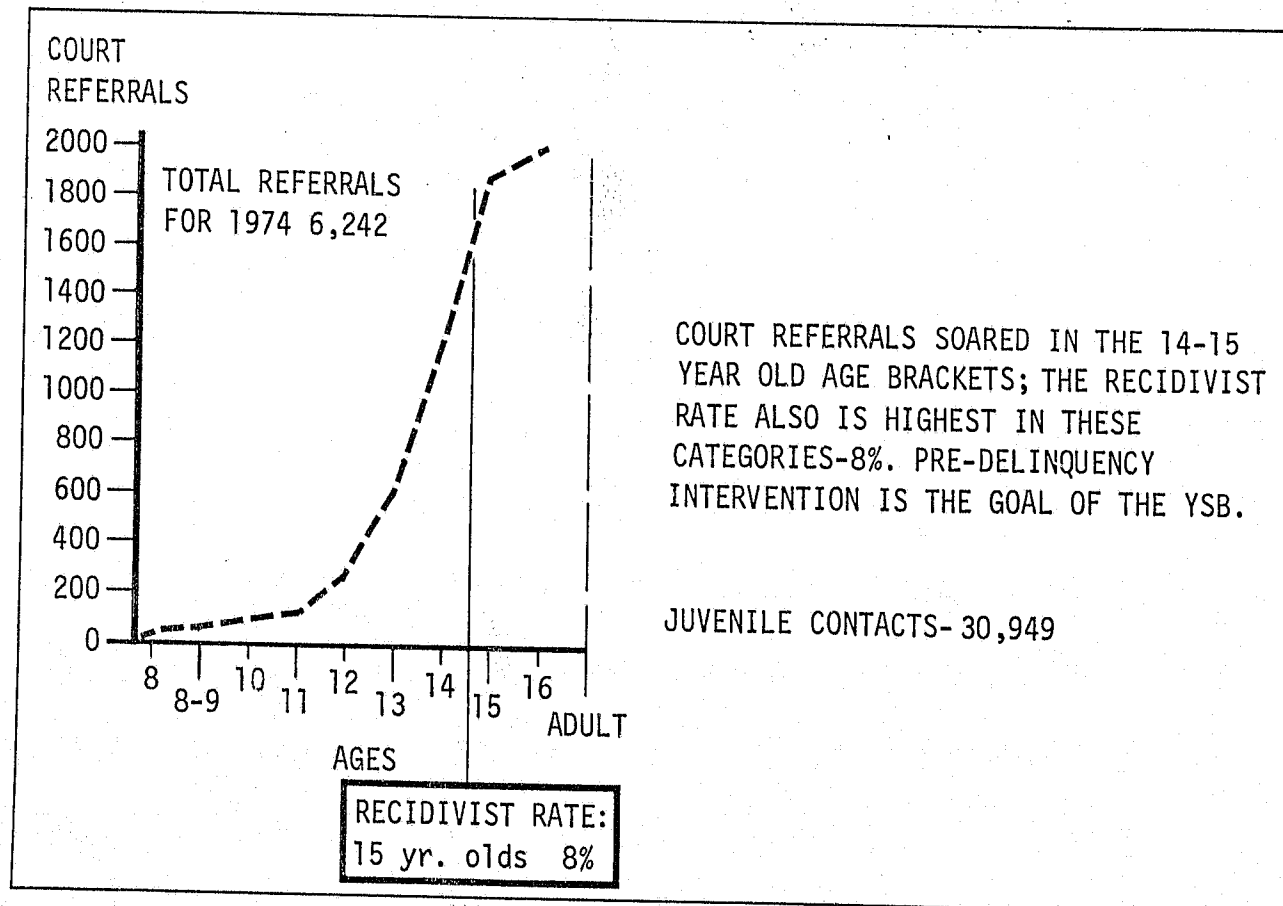
Every month firearms technicians inspect and test fire an average of 600 guns seized as evidence in criminal cases and 600 handguns for registration. Other specialists from the section responded to 104 locations for threats of, or for actual bombs; examined 909 handwriting samples (93 for other agencies); conducted polygraph examinations for 465 individuals (resulting in 103 admissions or confessions), and processed 17 voiceprint cases.

-Organized Crime-

Organized crime investigations also received a different emphasis during 1974 with the creation of the Organized Crime Section. This was accomplished by combining elements of the Intelligence Section, the Racket Conspiracy Section, the Vice Section, and the Tactical Reconnaissance Section. The result of this amalgamation is a greater overview of the scope and influence of organized crime and a more concentrated and coordinated effort against the many forms of organized crime.

-Juveniles-

Our department has continued to set national trends in the processing of juvenile offenders. The juvenile's right to receive treatment as opposed to the traditional concept of "punishment" is an operational objective of the Youth Services Bureau. Police officers and civilian youth advisors concentrate on the pre-delinquent or first offender. This past year in Detroit, the actual number of juvenile contacts increased while the number referred to the juvenile court decreased. The civilian youth advisors handled 4,481 direct referrals from officers, playing an important part in the process of treatment of the potential delinquent.



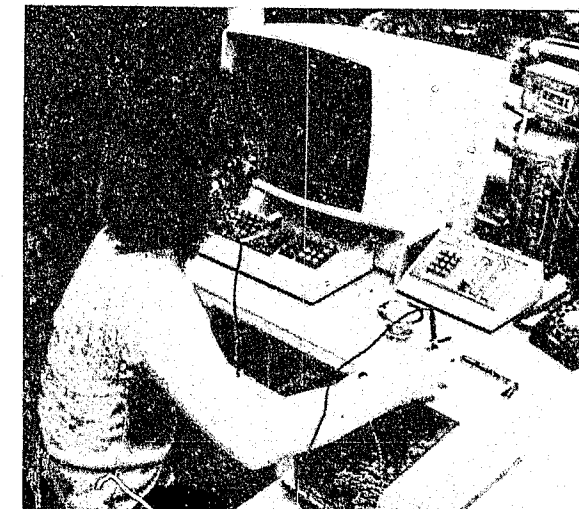
-Traffic-

During 1974, the Traffic Section was organized to administer and perform certain duties formerly the responsibility of the Traffic Division and its various sections. As constituted, the Traffic Section consists of three units: the Freeway Unit (responsible for patrolling the city's freeways with an emphasis on traffic enforcement); the Special Traffic Unit (comprised of motorcycle officers, and used for traffic enforcement and patrol of the main arteries of the city); and, the Administration Unit.

-Communications-

The Detroit Police Department has the finest police communications system in the world; the efforts and accomplishments of 1974 contributed to this distinction.

THE REDESIGN OF THE DISPATCH CENTER, BEGUN IN 1973, WAS COMPLETED. THIS INCLUDED FULL CONVERSION TO THE 450MHZ BROADCAST BAND NECESSARY FOR FULL UTILIZATION OF THE 12-CHANNEL MOBILE RADIOS NOW INSTALLED IN SOME 800 POLICE VEHICLES.



CIVILIAN EMERGENCY SERVICE OPERATORS NOW HANDLE ALL INCOMING 911 CALLS.

POLICE DISPATCHERS RECEIVING ELECTRO-WRITTEN MESSAGES FROM 911 OPERATORS CAN HAVE RESPONSE CARS ON THE WAY WHILE THE CITIZEN CALLING FOR SERVICE IS STILL ON THE LINE.



The 911 telephone response system saw its first full calendar year of operation in 1974, with the result being a 67.6 percent increase in calls for service over the pre-911 data base. An average of 5,100 calls on 911 are received daily, resulting in the dispatch of some 2,100 vehicles during a 24-hour period.

The 911 system demonstrates the adaptability and progressive nature of the department administration. A complaint rate of one for every 10,935 calls received, although minute, is of concern and is being addressed in regular in-service instruction.

The Police Information Network (P.I.N.) was established during 1974. Coordinated through the Communications Section and the General Information Section of the department, the system disseminates information to Detroit area radio and television stations from the scene of traffic situations or from any other incident, which may have an effect on the safety and well-being of the public.

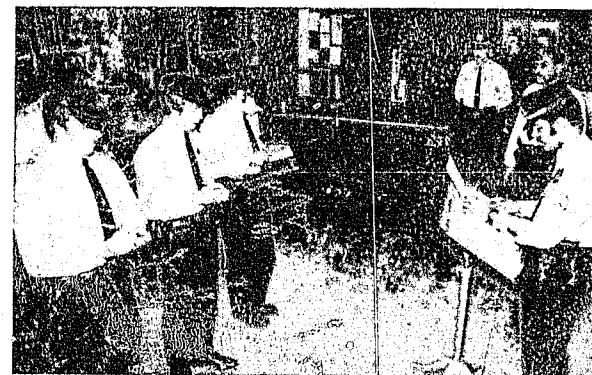


OFFICERS FLYING REGULAR TRAFFIC PATROLS KEEP THE NEWS MEDIA DIRECTLY INFORMED OF TRAFFIC PROBLEMS THROUGH THE COMMUNICATIONS P.I.N.

DPD

-Personnel-

This year the activities of the Personnel Bureau centered around three major themes: affirmative action policy, civilianization of several department functions, and advances in training programs.



During 1974, a minority recruitment goal was established that aims for a 50/50 Black-White ratio of department personnel by 1978. This policy resulted in the number of blacks in supervisory positions more than doubling.

DPD

Promotions for women were made on the levels of Sergeant, Lieutenant, and Inspector for the first time without regard to the traditional "existing vacancy" policy within the female ranks. In October, the department embarked on a program to assign women to regular street patrol activities. Thirty-seven females were placed in two pilot precincts during the year.

Civilianization is another trend in the department. Civilians are employed to perform certain tasks in order to make more police officers available for street duty. For example, a number of civilian Service Guards now replace sworn officers in the prisoner handling function. In the same way, the Emergency Service Operators now handle all calls on the 911 emergency lines. Other positions demonstrating the civilianization trend are research and information specialists, budget analysts, computer systems analysts, administrative assistants, and crime laboratory personnel.

The emphasis on training for police officers was never greater than in 1974. It was this year that the Criminal Justice Institute became fully functional and capable of providing the widest range of basic and advanced training for all criminal justice personnel.

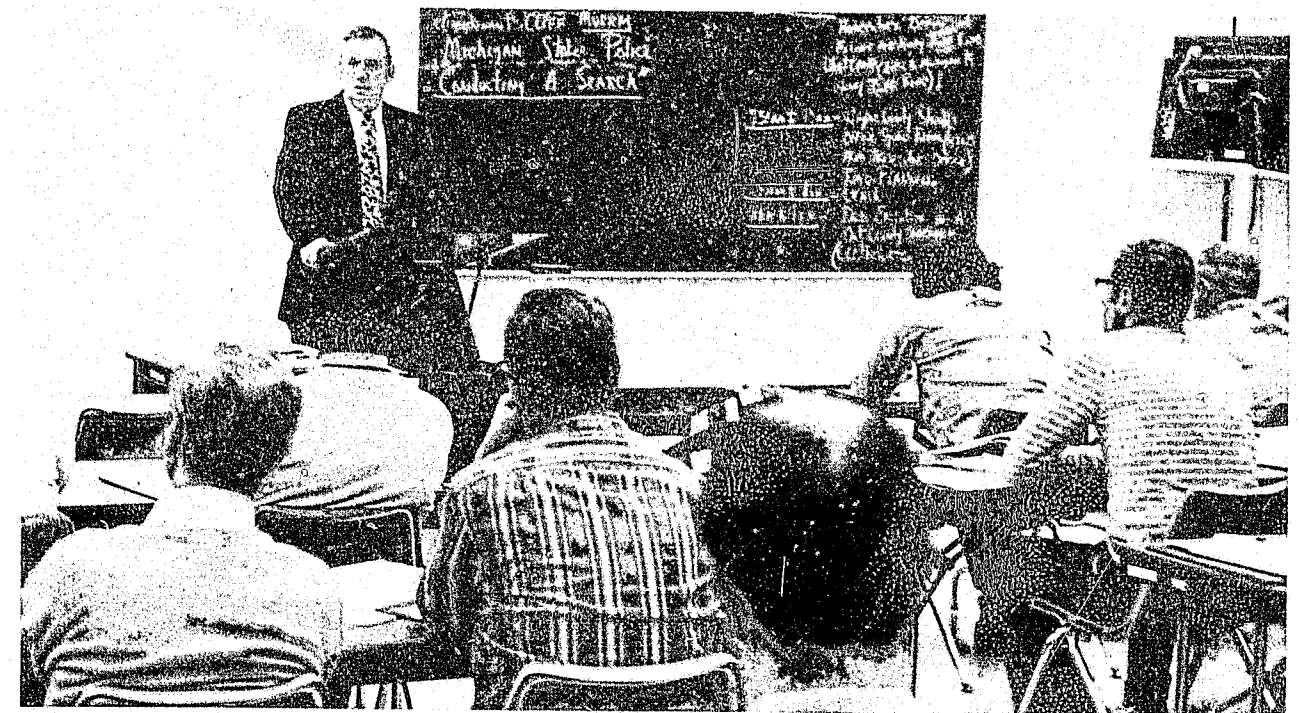
DPD

DPD



A total of 2,787 police officers and supervisors underwent some form of training through the C. J. I. during 1974. Twenty-five advanced training sessions were held which featured an integrated rank-team approach wherein officers and their supervisors received training as a unit. This program focuses on patrol techniques and assignments.

DPD



Also during 1974, an officer candidate school was created which serves those officers of lower ranks in preparation for promotions to the next higher ranks. The requirements for promotion now include the earning of college credits. A total of 374 members of the department attended Officer Candidate School in 1974.

The Chaplaincy Corps, expanded from 2 to 24 persons (including two females) provides religious and spiritual assistance to members of the department and the persons who come into contact with the department.

-Internal Controls-


The ethical and moral character of the department continues as a strong fiber within the police network. The Internal Affairs Section, charged with the discovery, investigation and prosecution of criminal misconduct on the part of police officers, handled 206 investigations in 1974. The Professional Standards Section received 1,348 complaints made by citizens regarding misconduct, mistreatment or inadequate or improper police service. The Ombudsman's office, established during the year under the new city charter, forwarded ten complaints to the Professional Standards Section. Eleven police officers were brought before the Trial Board in 1974; one was found not guilty and others were found guilty with dispositions ranging from suspension to dismissal.

* * * * *

The activities described here represent only a small part of the many and varied activities occurring in the department during the year. Once again, the men and women of the Detroit Police Department were a credit to the fine traditions of the police service. Sadly, seven officers gave their lives in the performance of duty during 1974.

On behalf of the men and women of the Detroit Police Department, I want to thank Mayor Coleman Young, the Board of Commissioners, and the City Council for their material and moral support.

Sincerely,


 PHILIP G. TANNIAN
 Chief of Police



IN MEMORIAM



Sergeant
LEONARD M. TODD
Badge #S-1084
Appointed 2-11-63
Died 1-16-74

Sergeant Todd was fatally wounded at the scene of a barricaded gunman incident.



Police Officer
EDWARD PAKULA
Badge #1906
Appointed 10-27-69
Died 1-16-74

Officer Pakula was fatally wounded at the scene of a barricaded gunman incident.



Police Officer
GERALD A. MORRISON
Badge #2207
Appointed 12-27-71
Died 3-11-74

Officer Morrison was fatally shot as he entered a bar in pursuit of a wanted man.



Police Officer
BRENDT L. STEPHENS
Badge #4284
Appointed 8-2-71
Died 5-25-74

Officer Stephens died protecting a woman from an armed gunman.

IN MEMORIAM



Police Officer
JON A. RYCKMAN
Badge #4169
Appointed 5-10-71
Died 6-28-74

Officer Ryckman died as a result of a collision between a police helicopter and a private airplane.



Police Officer
BYRON B. SOULE, JR.
Badge #3571
Appointed 1-25-65
Died 6-28-74

Officer Soule died as a result of a collision between a police helicopter and a private airplane.



Police Officer
ROBERT J. HOGUE
Badge #4301
Appointed 8-23-71
Died 12-21-74

Officer Hogue was killed when a prisoner produced a hidden gun and fired a fatal shot.

DEPARTMENT HONOR MEDAL AWARDS

DETROIT * POLICE
 Memorial Medal of Honor
 -posthumously-
 SERGEANT LEONARD TODD
 POLICE OFFICER JAMES WATTS
 POLICE OFFICER EDWARD PAKULA
 POLICE OFFICER BRENDT STEPHENS
 POLICE OFFICER GERALD MORRISON

DETROIT * POLICE
 Memorial Medal
 -posthumously-
 POLICE OFFICER ROBERT HOGUE
 POLICE OFFICER BYRON SOULE
 POLICE OFFICER JON RYCKMAN

THE WALKER SCOTT
 Distinguished Service Medal
 POLICE OFFICER LEONARD DZIUK

DETROIT NEWS
 Medal for Valor
 SERGEANT BERNARD CHABOT

<u>Citations Awarded in 1974</u>	
Departmental Citations	90
Merit Citations	1078
Chief's Citations	4
Civilian Citations	82
Police Reserves	14

<u>Marksmanship Awards</u>	
Chief's Trophy	Court Section
Edward R. Sash Trophy	Inspector Laurence R. VanAlstine
Distinguished Expert Trophy:	
Sergeant and above	Sergeant Charles F. Kohls
Police Officer	Officer Jeffrey M. Walker
High Unit Plaque:	
Under 50 members	Field Operations Section
Over 50 members	Fourteenth Precinct

DETROIT * POLICE
 Distinguished Medal of Valor
 SERGEANT ROBERT HAYES
 POLICE OFFICER JAMES LASHBROOK
 POLICE OFFICER HECTOR MADRIGAL
 POLICE OFFICER KENNETH PELTIER

WESSON SEYBURN
 Distinguished Service Cross
 POLICE OFFICER RUFUS MOORE, JR.

OPERATING STATEMENT FOR FISCAL YEAR ENDING JUNE 30, 1974

I. - OPERATION, MAINTENANCE, CONTRIBUTION TO POLICE & FIRE RETIREMENT,
 AND POLICE PENSION-OLD PLAN:

Personnel Service (Salaries and Wages) :

Executive	\$ 885,595.01	
Administration	5,957,096.68	
Field Services	66,609,807.94	
Inspectional Services	5,714,597.05	
Technical Services	7,039,893.60	
Police Cadet Training Program	700,507.93	
Personnel Assigned - Data Processing	363,384.38	
		\$ 87,270,882.59

Maintenance:

Supplies and Repairs	2,389,988.54	
Replacements	658,651.76	
		3,048,640.30
Non-Pay Personnel Costs - Civilians		2,728,432.99
Police and Fire Retirement System		40,195,758.00
Group Insurance - Death		88,856.88
Group Insurance - Hospitalization		4,327,699.49
Group Life Insurance		218,743.51
Police Pension-Old Plan		1,312,277.25
		<u>139,191,292.01</u>

II. - POLICE CONTRIBUTION TOWARD GRANTS 12,490.00

III. - CAPITAL COSTS:

Building Program	-----
	<u>139,203,782.01</u>

IV. - CREDITS:

Revenue from Various Sources	-29,373,120.17
	<u>\$ 109,830,661.84</u>

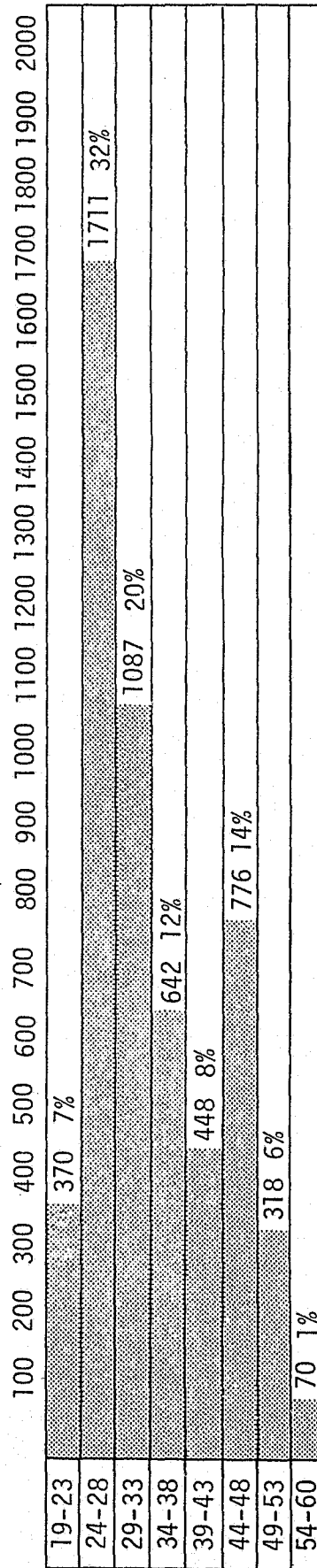
1974 DEPARTMENT AGE AND SENIORITY

Average Age By Rank

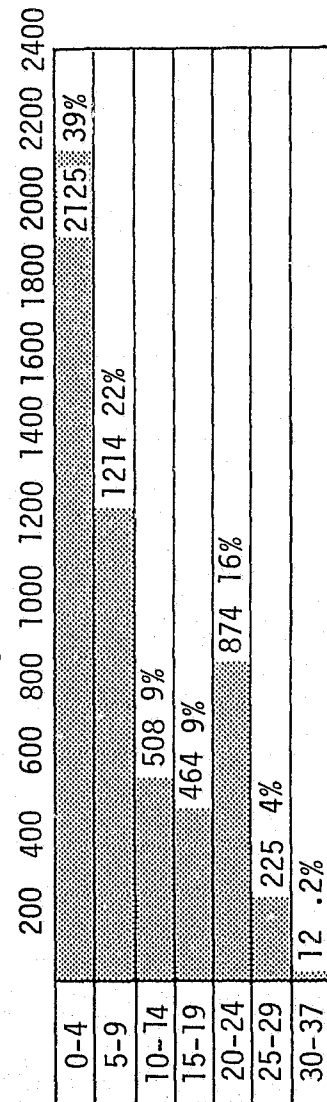
RANK	20	25	30	35	40	45	50	55
Deputy Chief							52	
Commander							48	
Inspector							47	
Lieutenant							45	
Sergeant							42	
Police Officer							31	

RANK	5 yrs.	10 yrs.	15 yrs.	20 yrs.	25 yrs.
Deputy Chief					25
Commander					25
Inspector				23	
Lieutenant				22	
Sergeant					17
Police Officer					6

Age Distribution



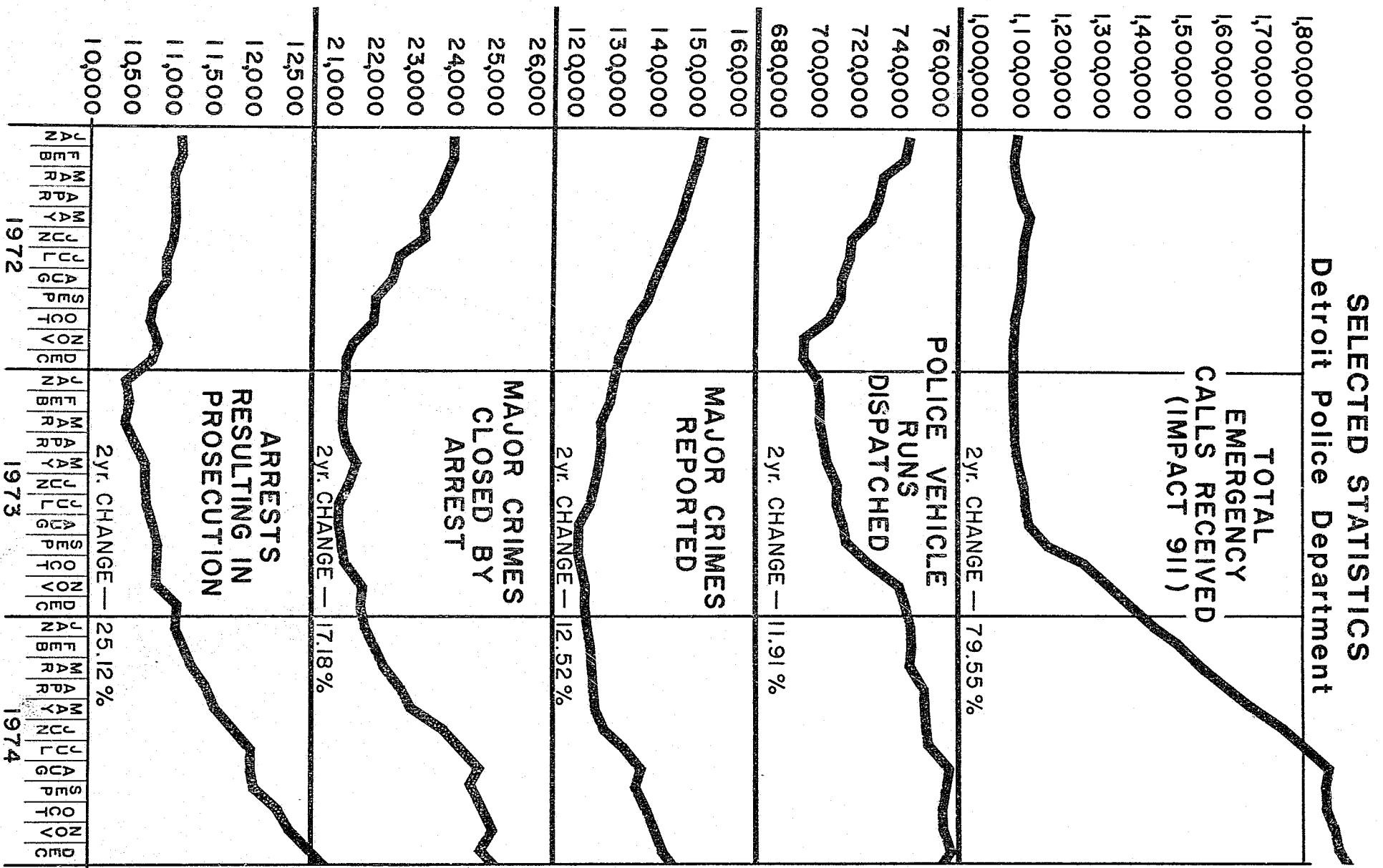
Seniority Distribution



STATUS OF POLICE PERSONNEL	SALARY BY POLICE RANK
IN SERVICE, JANUARY 1, 1974.....5570	CHIEF.....\$39,800
CHANGES IN 1974:	DEPUTY CHIEF..... 31,000
ADDITIONS.....296	COMMANDER..... 26,900
SEPARATIONS:	INSPECTOR..... 24,300
KILLED..... 7	LIEUTENANT..... 21,766
DIED..... 12	SERGEANT..... 19,403
DROPPED OR DISMISSED..... 9	POLICE OFFICER..... 15,000
MILITARY OR MATERNITY LEAVE..... 7	
RESIGNED VOLUNTARILY.....126	
RESIGNED UNDER CHARGES..... 9	
RETIRED SERVICE, 25 YEARS	
OR OVER.....233	
DUTY DISABILITY..... 32	
NON SERVICE CONNECTED	
DISABILITY..... 9	
IN SERVICE, DECEMBER 31, 1974....5422	

CIVILIAN PERSONNEL CATEGORIES	
PROFESSIONALS.....	36
TECHNICAL.....	44
CLERICAL.....	359
SERVICE MAINTENANCE.....	211
POLICE OFFICER TRAINEES.....	81
CADETS.....	53
SCHOOL CROSSING GUARDS.....	273

ASSIGNMENT OF DEPARTMENT PERSONNEL-DECEMBER 31, 1974																	
	EXECUTIVE	INSPECTOR	LIEUTENANT	SERGEANT	POLICE OFFICER-MALE	POLICE OFFICER-TECHNICIAN	POLICE OFFICER- FEMALE	PROBATIONARY OFFICER-MALE	PROBATIONARY OFFICER-FEMALE	STUDENT OFFICER-MALE	STUDENT OFFICER-FEMALE	TOTAL POLICE FORCE	CIVILIANS			GRAND TOTAL	
													POLICE CADET	TRAINEE POLICE OFFICER	CIVILIANS		
ADMINISTRATION	1	1	1	3	10		1					17	1	7	8	25	
INTERNAL CONTROLS BUREAU	1	2	3	51	16							73		7	7	80	
YOUTH SERVICES BUREAU	1	2	9	31	87		41					171	15	35	50	221	
PERSONNEL BUREAU	3	2	14	45	119	1	3	3	2	48	55	295	3	6	25	34	329
EASTERN OPERATIONS	6	10	59	324	1219	6	1	77	9			1711	9	19	57	85	1796
WESTERN OPERATIONS	4	9	62	309	1084		1	69	8			1546	6	21	40	67	1613
HEADQUARTERS BUREAU	4	25	62	361	781	25	33	1				1292	12	27	159	198	1490
MANAGEMENT SERVICES BUREAU	3	9	17	54	152	80	2					317	8	7	268	283	600
TOTAL PERSONNEL	23	60	227	1178	3468	112	82	150	19	48	55	5422	53	81	598	732	6154
													ADDITIONAL CIVILIAN PERSONNEL				
													SCHOOL CROSSING GUARDS		273		
													CETA PERSONNEL		52		
													1057	6479			



WORK ACCOMPLISHED AND MILES TRAVELED - BY PRECINCT

Duties Performed	P R E C I N C T														TMS	TOTAL
	1	2	4	5	6	7	10	11	12	13	14	15	16			
P O L I C E A C T I V I T I E S																
Police Runs	27564	42479	44441	58712	49237	56056	56646	60186	51674	55067	57263	67795	56565	6915	690600	
Felony Arrests	3856	2891	1923	4100	2081	4245	4803	2852	2526	4039	3855	3375	1785	3133	45464	
Misdemeanor Arrests	2477	3484	2773	4484	2526	4912	3591	3095	2231	4585	4194	3982	2315	4172	48821	
Juveniles Detained	86	821	1243	1411	848	1074	856	1192	917	507	1910	333	1269	444	12911	
Ordinance Complaints	14829	17709	15742	24233	13446	26773	28273	19775	16444	42512	19694	19256	12262	18452	289400	
Persons Investigated	51049	62546	54498	89728	69853	101231	99817	91625	71459	95569	95433	93436	73616	71329	1131189	
Autos Investigated	23500	32635	31887	42915	30478	52108	49388	43151	34599	63763	50519	42668	29037	51200	577848	
Autos Recovered	584	1371	1730	1372	1708	1816	2372	1631	1795	1652	2177	1787	1060	1098	22153	
Missing Reports	61	161	175	208	231	269	207	217	251	79	154	64	116	4	2197	
Missings Recovered	63	210	204	245	206	267	240	189	170	223	281	300	259	32	2889	
Preliminary Complaint Reports	9511	12785	14951	19299	16816	19458	20193	20372	17061	16297	21220	21264	16989	9978	236194	
Fire Reports	48	345	182	88	34	29	40	50	41	160	315	---	62	539	1933	
Motor Vehicle Accident Reports	1117	1752	2142	1840	2224	2579	2455	2902	2112	2467	2349	3143	3132	188	30402	
Value of Property Recovered .. \$	924,739	2,711,563	2,807,792	2,296,569	3,134,023	2,808,716	4,332,466	2,424,287	3,888,525	3,172,510	3,319,549	2,453,316	1,395,544	1,866,456	37,536,055	
Prisoners Transferred	24144	2492	2117	4149	2353	4099	3005	2583	2090	5295	3301	3219	1786	452	61085	
S I C K O R I N J U R Y A C T I V I T I E S																
Sick or Injury Runs	159	76	59	114	105	266	105	66	81	84	136	54	64	34	1403	
Miscellaneous Accident Reports	9	3	4	7	14	11	23	10	9	41	11	10	230	---	382	
First Aid Rendered	---	3	7	11	3	12	3	2	3	4	---	2	552	4	606	
Sick or Injured Conveyed	309	209	104	263	183	379	235	207	207	371	202	137	256	64	3127	
Miles-Sick or Injury Runs	340	451	772	1905	952	994	1323	906	1449	562	1754	568	1350	378	13704	
M I S C E L L A N E O U S H O U R S																
Time Spent-Sick or Injury Runs	134	1276	242	220	87	262	142	50	115	102	166	48	165	58	3067	
Time Spent-Special Details	13234	12177	10244	15280	6390	16073	11860	17054	7820	11500	10724	4829	14241	12391	158817	
Total Hours-Demonstration Detail	451	1238	1198	3	4539	3930	1745	1297	3103	2871	3556	1608	3722	2962	32223	
Total Hours-In Service Training	3461	3860	6361	7623	5664	4430	5897	5006	4480	6255	6514	6938	4498	9348	80335	
Total Hours-Sports Detail	1079	11407	596	760	1207	115	844	522	502	244	251	280	462	321	18590	
Total Hours-Special Assignments	9584	4434	11644	4732	5621	14799	13828	5955	8134	7380	10366	10169	7760	33230	147986	
Total Hours-Traffic Detail	1615	862	690	2438	2061	113	472	257	462	4052	553	16	93	99	13723	
Total Hours-Entertainment Detail	3586	5161	1130	58	1362	829	680	2231	2294	1874	2967	2728	1691	1730	28321	
Time Spent on Police Runs	14318	28496	23179	37003	25607	33970	31781	33509	30274	30626	33478	35626	54941	4897	417705	
Time Spent on Patrol	26312	45670	36313	47211	37110	62679	41541	47103	39157	50079	45383	51732	65737	58211	654243	
Time Out of Service	6014	12127	6833	10798	9106	16569	11774	11236	12301	19426	13575	15270	22425	11905	179359	
GRAND TOTAL - RUNS	27723	42555	44500	58826	49342	56322	56751	60252	51755	55151	57399	67849	56629	6949	692003	
GRAND TOTAL - MILES TRAVELED ..	279375	654714	806787	706168	631828	885303	688691	898588	762277	664267	1055028	951034	1190686	759137	10934283	

CRIMINAL OFFENSES
Five Year Comparison

PERCENTAGE
INCREASE OR DECREASE

TOTAL CRIME

Classification

	1974	1973	1972	1971	1970	1974/73	1974/72	1974/71	1974/70
Homicide	714	672	601	577	495	+ 6.3	+ 18.8	+ 23.7	+ 44.2
Negligent Manslaughter	18	16	14	16	22	+ 12.5	+ 28.6	+ 12.5	- 18.2
Manslaughter - Traffic	30	31	36	30	*	- 3.2	- 16.7	-----	-----
Rape	1260	1148	818	853	819	+ 9.8	+ 54.0	+ 47.7	+ 53.8
Robbery	20190	16249	17170	20752	23038	+ 24.3	+ 17.6	- 2.7	- 12.4
Assault	10319	9748	9218	8486	8514	+ 5.9	+ 11.9	+ 21.6	+ 21.2
Burglary	42299	36537	42563	51528	50868	+ 15.8	- 0.6	- 17.9	- 16.9
Larceny	42305	33789	38705	51171	56721	+ 25.2	+ 9.3	- 17.3	- 25.4
Auto Theft	25583	23148	20522	22770	20864	+ 10.5	+ 24.7	+ 12.4	+ 22.6
Total Part I Offenses	142718	121338	129647	156183	161341	+ 17.6	+ 10.1	- 8.6	= 11.6
Total Part II Offenses	35335	32384	28984	29759	31545	+ 9.1	+ 21.9	+ 18.7	+ 12.0
GRAND TOTAL	178053	153722	158631	185942	192886	+ 15.8	+ 12.2	- 4.3	- 7.7

*Included in Negligent Manslaughter prior to 1971

OFFENSES REPORTED (IN DETAIL) - THREE YEAR PERIOD

Uniform Classification of Offenses	1974	1973	1972
HOMICIDE AND NON-NEGLIGENT MANSLAUGHTER:			
Murder (1, 2, and Manslaughter)	652	617	528
Non-Criminal (Self Defense)	62	55	73
Total	714	672	601
RAPE - FORCIBLE:			
Rape	814	692	522
Statutory Rape	160	160	90
Attempt Rape	286	296	203
Total	1260	1148	818
ROBBERY:			
Robbery - Armed	12467	9934	10598
Robbery - Not Armed	5871	4895	5062
Attempt Robbery	1852	1420	1510
Total	20190	16249	17170
AGGRAVATED ASSAULT:			
Felonious Assault	6928	6571	6067
Attempt Homicide	28	37	52
Mayhem	1	--	1
Total	6957	6608	6120
BURGLARY - BREAKING OR ENTERING:			
Breaking or Entering Business	9820	7672	7535
Breaking or Entering Dwelling	22247	21154	26562
Breaking or Entering Others	6657	4603	5274
Attempt Break or Enter Business	1151	891	727
Attempt Break or Enter Dwelling	2157	1998	2239
Attempt Break or Enter Others	267	219	226
Total	42299	36537	42563
LARCENY - THEFT:			
\$50.00 and Over in Value:			
Larceny	12386	9058	8309
Larceny from Motor Vehicle	9033	7160	10078
Larceny from Person	1164	946	1018
Total	22583	17163	19405
AUTO THEFT	25583	23148	20522
* CRIME INDEX TREND	139308	118151	126499
MANSLAUGHTER BY NEGLIGENCE			
	18	16	14
MANSLAUGHTER - TRAFFIC			
	30	31	36
OTHER ASSAULTS			
	3362	3140	3098
LARCENY - THEFT:			
Under \$50.00 in Value:			
Larceny	14228	11600	12834
Larceny from Motor Vehicle	2596	2531	3556
Larceny from Person	2054	1804	2089
Attempt Larceny	406	284	290
Attempt Larceny from Motor Vehicle	350	345	460
Attempt Larceny from Person	88	62	71
Total	19722	16626	19300
TOTAL PART I CLASSES	142718	121338	129647

* Figure used by Federal Bureau of Investigation in establishing City Crime Trends

DISTRIBUTION OF CERTAIN OFFENSES: BY MONTHS

Uniform Classification of Offenses	JANUARY	FEBRUARY	MARCH	APRIL	MAY	JUNE	JULY	AUGUST	SEPTEMBER	OCTOBER	NOVEMBER	DECEMBER	TOTAL
HOMICIDE AND NON-NEGLIGENT MANSLAUGHTER:													
Murder (1, 2, and Manslaughter)	57	35	49	73	51	51	42	69	56	53	61	55	652
Non-Criminal (Self Defense)	2	2	8	10	4	3	5	5	6	6	8	3	62
Total	59	37	57	83	55	54	47	74	62	59	69	58	714
MANSLAUGHTER BY NEGLIGENCE	3	1	5	2	1	1	1	--	1	1	1	1	18
MANSLAUGHTER - TRAFFIC	4	1	--	3	3	3	2	1	--	6	2	5	30
RAPE - FORCIBLE:													
Rape	58	48	53	71	61	73	66	88	84	73	74	65	814
Statutory Rape	22	8	8	9	12	17	17	21	10	8	12	16	160
Attempt Rape	16	9	22	24	26	34	29	34	25	26	20	19	286
Total	96	65	83	104	99	126	112	143	119	107	106	100	1260
ROBBERY:													
Robbery - Armed	886	747	847	899	941	933	1096	1163	1032	1304	1318	1281	12467
Robbery - Not Armed	373	272	404	384	435	606	690	628	521	540	531	487	5871
Attempt Robbery	144	112	121	131	153	146	172	125	160	202	193	193	1852
Total	1403	1131	1372	1414	1529	1705	1958	1916	1713	2046	2042	1961	20190
AGGRAVATED ASSAULT:													
Felonious Assault	517	380	561	629	599	629	710	632	583	649	550	489	6928
Attempt Murder	6	1	2	4	6	1	--	3	1	1	3	--	28
Mayhem	--	--	--	--	--	--	--	--	--	--	1	--	1
Other Assaults	239	247	282	296	286	307	308	283	322	350	233	209	3362
Total	762	628	845	929	891	937	1018	918	906	1000	787	698	10319
BURGLARY - BREAKING OR ENTERING:													
Breaking or Entering Business	652	645	736	754	801	895	1004	929	829	806	834	935	9820
Breaking or Entering Dwelling	1752	1421	1595	1588	1620	1609	1951	2079	2006	2230	2353	2043	22247
Breaking or Entering Others	789	316	419	535	676	822	973	709	511	607	467	333	6657
Attempt Break or Enter Business	65	63	76	92	93	88	137	101	94	108	112	122	1151
Attempt Break or Enter Dwelling	207	143	159	150	158	157	150	184	173	231	230	215	2157
Attempt Break or Enter Others	11	8	21	27	21	34	36	30	15	30	19	15	267
Total	2976	2596	3006	3146	3369	3605	4251	3628	4012	4015	3663	42299	
LARCENY - THEFT:													
a. \$50.00 & Over in Value:													
Grand Larceny	706	526	664	916	1063	1489	1814	1566	1120	1033	774	715	12386
Larceny from Motor Vehicle	460	477	630	663	741	696	834	830	1074	1011	892	892	9033
Larceny from Person	68	60	71	91	99	102	114	132	112	88	120	107	1164
Total	1234	1063	1365	1670	1903	2287	2653	2532	2062	2195	1905	1714	22583
b. Under \$50.00 in Value:													
Simple Larceny	813	735	820	1665	1106	1557	1399	1269	1178	1293	1192	1201	14228
Larceny from Motor Vehicle	150	197	208	198	203	232	226	229	234	254	256	209	2596
Larceny from Person	141	104	147	151	149	143	180	166	187	256	244	2054	
Attempt Larceny	28	18	17	35	34	48	51	45	36	45	24	25	406
Attempt Larceny from Motor Vehicle	28	22	24	31	29	20	28	41	37	28	30	39	350
Attempt Larceny from Person	3	4	7	9	5	3	5	14	9	10	8	11	88
Total	1156	1086	1223	2089	1526	2003	1889	1784	1660	1817	1766	1729	19722
TOTAL LARCENY - THEFT	2390	2143	2588	3759	3429	4290	4542	4316	3722	4012	3671	3443	42305
AUTO THEFT	1672	1593	1555	1755	2033	2064	2836	2431	2436	2706	2543	1959	25583
TOTAL PART I CLASSES	9365	8195	9511	11195	11409	12785	14767	13831	12587	13949	13236	11888	142718
TOTAL PART II CLASSES	2560	2057	2974	3030	2916	2798	2950	3008	3029	4034	3341	2638	35335
GRAND TOTAL	11925	10252	12485	14225	14325	15583	17717	16839	15616	17983	16577	14526	178053

DISTRIBUTION OF CERTAIN OFFENSES: BY DAY OF WEEK

Uniform Classification of Offenses	MONDAY	TUESDAY	WEDNESDAY	THURSDAY	FRIDAY	SATURDAY	SUNDAY	UNKNOWN	TOTAL
HOMICIDE AND NON-NEGLIGENT MANSLAUGHTER:									
Murder (1, 2, and Manslaughter)	92	87	75	80	91	121	85	21	652
Non-Criminal (Self Defense)	9	10	3	6	14	10	10	--	62
Total	101	97	78	86	105	131	95	21	714
MANSLAUGHTER BY NEGLIGENCE	1	1	3	2	--	2	9	--	18
MANSLAUGHTER - TRAFFIC	6	4	3	3	5	4	5	--	30
RAPE - FORCIBLE:									
Rape	121	119	104	91	111	131	136	1	814
Statutory Rape	24	30	19	19	18	25	18	7	160
Attempt Rape	36	38	36	40	45	46	44	1	286
Total	181	187	159	150	174	202	198	9	1260
ROBBERY:									
Robbery - Armed	1737	1563	1573	1714	2308	2089	1479	4	12467
Robbery - Not Armed	806	760	785	793	1065	1052	605	5	5871
Attempt Robbery	244	278	273	252	345	283	175	2	1852
Total	2787	2601	2631	2759	3718	3424	2259	11	20190
AGGRAVATED ASSAULT:									
Felonious Assault	767	891	888	896	1125	1300	1052	9	6928
Attempt Murder	4	3	5	3	6	5	2	--	28
Mayhem	--	--	--	--	1	--	--	--	1
Other Assaults	444	472	516	495	518	465	444	8	3362
Total	1215	1366	1409	1394	1650	1770	1498	17	10319
BURGLARY - BREAKING OR ENTERING:									
Breaking or Entering Business	1386	1267	1170	1212	1198	1140	1317	1130	9820
Breaking or Entering Dwelling	3033	3033	3026	2994	3391	2796	2410	1564	22247
Breaking or Entering Others	737	779	721	752	700	711	822	1435	6657
Attempt Break or Enter Business	157	152	154	163	121	126	173	105	1151
Attempt Break or Enter Dwelling	330	286	351	296	316	274	261	43	2157
Attempt Break or Enter Others	41	35	32	33	42	32	35	17	267
Total	5684	5552	5454	5450	5768	5079	5018	4294	42299
LARCENY - THEFT:									
a. \$50.00 and Over in Value:									
Grand Larceny	1598	1610	1714	1677	1756	1500	1150	1381	12386
Larceny from Motor Vehicle	1274	1262	1250	1210	1179	1140	1132	586	9033
Larceny from Person	165	172	139	167	241	188	91	1	1164
Total	3037	3044	3103	3054	3176	2828	2373	1968	22583
b. Under \$50.00 in Value:									
Simple Larceny	1915	1975	2003	1885	2087	2043	1352	968	14228
Larceny from Motor Vehicle	391	354	363	345	327	344	373	99	2596
Larceny from Person	310	284	287	293	376	290	212	2	2054
Attempt Larceny	54	62	78	60	60	44	39	9	406
Attempt Larceny from Motor Vehicle	47	69	57	49	39	50	31	8	350
Attempt Larceny from Person	15	11	7	14	18	11	12	--	88
Total	2732	2755	2795	2646	2907	2782	2019	1086	19722
TOTAL LARCENY - THEFT	5769	5799	5898	5700	6083	5610	4392	3054	42305
AUTO THEFT	3504	3368	3422	3382	3918	3628	3192	1169	25583
TOTAL PART I CLASSES	19248	18975	19057	18926	21421	19850	16666	8575	142718
TOTAL PART II CLASSES	4618	4883	5025	4892	5231	4892	4179	1615	35335
GRAND TOTAL	23866	23858	24082	23818	26652	24742	20845	10190	178053

DISTRIBUTION OF CERTAIN OFFENSES - BY HOUR OF DAY

Uniform Classification Of Offenses	12 AM to 1:59 AM		2 AM to 3:59 AM		4 AM to 5:59 AM		6 AM to 7:59 AM		8 AM to 9:59 AM		10 AM to 11:59 AM		12 noon to 1:59 PM		2 PM to 3:59 PM		4 PM to 5:59 PM		6 PM to 7:59 PM		8 PM to 9:59 PM		10 PM to 11:59 PM		Day Time - Hour Unknown	Night Time - Hour Unknown	Time Unknown	TOTAL
HOMICIDE AND NON-NEGLIGENT MANSLAUGHTER:																												
Murder (1, 2, & Manslaughter)	75	58	36	24	14	24	26	46	54	50	74	80	2	10	79	652												
Non-Criminal (Self Defense)	12	1	4	--	1	2	6	5	6	7	8	9	--	--	1	62												
Total	87	59	40	24	15	26	32	51	60	57	82	89	2	10	80	714												
MANSLAUGHTER BY NEGLIGENCE																												
	3	3	--	--	1	--	2	2	2	1	4	--	--	--	18													
MANSLAUGHTER - TRAFFIC																												
	2	2	--	2	1	2	1	4	4	1	3	8	--	--	30													
RAPE - FORCIBLE:																												
Rape	153	139	70	57	15	14	12	35	36	36	90	114	2	16	25	814												
Statutory Rape	12	10	10	4	5	3	7	12	23	17	18	22	2	--	15	160												
Attempt Rape	38	30	29	30	10	9	14	21	18	11	27	43	--	1	5	286												
Total	203	179	109	91	30	26	33	68	77	64	135	179	4	17	45	1260												
ROBBERY:																												
Robbery - Armed	1264	887	425	310	333	689	967	1335	1446	1495	1600	1636	6	10	64	12467												
Robbery - Not Armed	363	236	50	87	182	396	628	804	955	798	752	587	4	2	27	5871												
Attempt Robbery	145	113	33	41	84	121	200	223	220	216	252	197	--	--	7	1852												
Total	1772	1236	508	438	599	1206	1795	2362	2621	2509	2604	2420	10	12	98	20190												
AGGRAVATED ASSAULT:																												
Felonious Assault	801	596	209	127	157	271	406	638	709	881	1051	1015	1	5	61	6928												
Attempt Murder	4	4	--	2	1	--	1	6	3	3	1	2	--	--	1	28												
Mayhem	--	--	--	--	--	--	--	--	1	--	--	--	--	--	--	1												
Other Assaults	307	234	88	67	168	188	284	440	389	420	398	352	3	2	22	3362												
Total	1112	834	297	196	326	459	691	1084	1102	1304	1450	1369	4	7	84	10319												
BURGLARY - BREAK OR ENTER:																												
Break or Enter Business	622	683	390	148	70	59	91	90	159	207	337	478	46	789	5651	9820												
Break or Enter Dwelling	537	374	262	176	444	781	1073	1097	972	1356	1347	938	3159	1976	7755	22247												
Break or Enter Others	179	140	72	64	120	174	189	244	267	296	301	291	169	340	3811	6657												
Att B & E Business	130	127	77	17	8	10	12	17	20	37	54	106	2	54	480	1151												
Att B & E Dwelling	184	129	61	43	72	115	139	123	116	159	220	240	151	59	346	2157												
Att B & E Others	20	19	7	6	5	7	15	19	17	17	22	23	6	10	74	267												
Total	1672	1472	869	454	719	1146	1519	1590	1551	2072	2281	2076	3533	3228	18117	42299												
LARCENY - THEFT:																												
a. \$50.00 & Over in Value:																												
Grand Larceny	279	171	112	109	307	589	1015	1333	1435	1133	878	525	419	395	3686	12386												
Larceny from Mtr. Vehicle	353	170	109	94	162	273	400	459	459	596	628	424	647	815	3444	9033												
Larceny from Person	57	44	20	15	34	89	163	180	187	151	127	73	--	6	18	1164												
Total	689	385	241	218	503	951	1578	1972	2081	1880	1633	1022	1066	1216	7148	22583												
b. Under \$50.00 in Value:																												
Simple Larceny	361	196	107	95	343	767	1397	1700	2026	1502	1057	577	458	347	3299	14228												
Larceny from Mtr. Vehicle	115	80	46	30	56	114	126	145	159	232	220	184	131	163	795	2596												
Larceny from Person	83	45	25	45	82	170	266	329	324	267	239	167	2	4	6	2054												
Attempt Larceny	28	24	16	7	12	24	33	38	42	45	34	32	7	--	64	406												
Att Larc fr Mtr. Vehicle	20	24	15	9	15	16	27	19	19	31	33	39	11	14	58	350												
Att Larc fr Person	6	1	1	--	2	11	7	15	17	17	8	3	--	--	88													
Total	613	370	210	186	510	1102	1856	2246	2587	2094	1591	1002	609	524	4222	19722												
TOTAL LARCENY - THEFT	1302	755	451	404	1013	2053	3434	4218	4668	3974	3224	2024	1675	1740	11370	42305												
AUTO THEFT	1120	514	306	248	507	701	982	1044	1145	1526	1868	1654	2010	2809	9149	25583												
TOTAL PART I CLASSES	7273	5054	2580	1857	3211	5619	8489	10423	11230	11508	11651	9819	7238	7823	38943	142718												
TOTAL PART II CLASSES	2627	1877	791	425	748	1339	1800	2393	2403	3005	4040	3745	725	1084	8333	35335												
GRAND TOTAL	9900	6931	3371	2282	3959	6958	10289	12816	13633	14513	15691	13564	7963	8907	47276	178053												

MAJOR OFFENSES BY PRECINCT HAPPENED - YEAR 1974
Also Three Year Comparison of Group Totals

Uniform Classification of Offenses (Part I Classes)	P R E C I N C T S																TOTALS
	1	2	3	4	5	6	7	10	11	12	13	14	15	16			
HOMICIDE AND NON-NEGLIGENT MANSLAUGHTER:																	
Murder (1, 2, and Manslaughter)	29	48	31	31	46	37	93	83	43	43	81	54	40	24	652		
Non-Criminal (Self Defense)	2	3	3	3	8	8	6	4	2	5	15	3	3	--	62		
Total Year 1974	31	51	34	34	54	45	99	87	45	48	96	57	43	24	714		
Total Year 1973	39	60	24	24	80	41	75	87	29	36	108	43	34	16	672		
Total Year 1972	32	54	26	26	78	55	69	71	27	25	74	34	43	13	601		
MANSLAUGHTER BY NEGLIGENCE:																	
Year 1974	--	1	1	1	3	1	--	2	2	1	3	4	--	--	18		
Year 1973	--	3	--	--	4	1	--	2	1	2	1	--	--	2	16		
Year 1972	--	--	--	2	3	--	1	2	1	--	--	2	3	--	14		
MANSLAUGHTER - TRAFFIC:																	
Year 1974	2	1	2	2	1	1	5	--	3	3	1	4	4	3	30		
Year 1973	5	2	2	2	1	2	2	1	2	1	1	6	3	3	31		
Year 1972	4	3	3	3	--	2	3	--	8	--	5	1	4	3	36		
RAPE - FORCIBLE:																	
Rape	30	50	20	20	84	58	106	97	49	67	85	62	71	35	814		
Statutory Rape	2	12	2	2	14	7	23	20	15	6	14	22	19	4	160		
Attempt Rape	23	16	10	10	30	21	31	26	18	23	29	11	35	13	286		
Total Year 1974	55	78	32	32	128	86	160	143	82	96	128	95	125	52	1260		
Total Year 1973	49	87	42	42	113	74	107	166	78	84	134	100	64	50	1148		
Total Year 1972	37	63	33	33	76	49	106	89	54	48	91	80	65	27	818		
ROBBERY:																	
Robbery - Armed	804	958	372	372	1213	821	1102	1439	1011	886	1443	929	918	571	12467		
Robbery - Not Armed	477	428	191	191	855	387	569	414	424	328	572	439	575	212	5871		
Attempt Robbery	140	135	56	56	210	124	184	195	156	119	195	116	145	77	1882		
Total Year 1974	1421	1521	619	619	2278	1332	1855	2048	1591	1333	2210	1484	1638	860	20190		
Total Year 1973	1191	1142	479	479	1781	1067	1587	1800	1184	1217	1837	1270	1121	573	16249		
Total Year 1972	1103	1291	585	585	1713	1324	1663	1839	1045	1280	2084	1423	1193	627	17170		
AGGRAVATED ASSAULT:																	
Felonious Assault	403	583	407	407	900	624	651	542	337	303	898	543	550	187	6928		
Attempt Homicide	--	2	2	2	2	2	1	4	4	2	5	1	--	3	28		
Mayhem	--	--	--	--	--	--	--	--	--	--	--	--	--	--	1		
Other Assaults	246	221	175	175	291	236	208	177	332	194	241	300	425	316	3362		
Total Year 1974	649	806	584	584	1193	862	860	723	673	499	1144	845	975	506	10319		
Total Year 1973	701	750	502	502	1175	779	745	868	656	583	986	809	790	404	3748		
Total Year 1972	658	696	493	493	1059	689	1006	874	561	542	819	741	709	371	9218		

MAJOR OFFENSES BY PRECINCT HAPPENED - YEAR 1974 (continued)

Uniform Classification of Offenses (Part I Classes)	P R E C I N C T														TOTALS
	1	2	4	5	6	7	10	11	12	13	14	15	16		
BURGLARY-BREAKING OR ENTERING:															
Breaking or Entering Business	495	645	609	724	805	774	652	919	694	521	953	1158	871	9820	
Breaking or Entering Dwelling	641	1082	1105	2035	1853	1631	2105	1755	2494	1507	2094	2043	1902	22247	
Breaking or Entering Others	81	311	608	647	556	450	287	730	526	234	608	754	865	6657	
Attempt Break or Enter Business	50	76	63	82	90	112	85	96	77	53	118	145	104	1151	
Attempt Break or Enter Dwelling	27	77	89	211	181	120	208	180	280	100	232	230	222	2157	
Attempt Break or Enter Others	4	16	21	29	21	30	18	25	15	4	25	36	23	267	
Total Year 1974	1298	2207	2495	3728	3506	3117	3355	3705	4086	2419	4030	4366	3987	42299	
Total Year 1973	1181	1870	2010	3064	2721	2821	3154	3338	3619	2511	3345	3314	3589	36537	
Total Year 1972	963	2481	2297	4486	3267	3248	3455	4220	4054	2800	3520	4182	3590	42563	
LARCENY - THEFT:															
a. \$50.00 and Over in Value:															
Larceny	1220	530	648	783	557	903	596	935	947	855	936	2268	1208	12386	
Larceny from Motor Vehicle	558	861	628	394	398	750	458	841	740	559	606	1102	1138	9033	
Larceny from Person	193	70	37	134	52	103	70	88	70	113	86	116	32	1164	
Total Year 1974	1971	1461	1313	1311	1007	1756	1124	1864	1757	1527	1628	3486	2378	22583	
Total Year 1973	1604	1033	968	1097	660	1452	814	1431	1477	1337	1206	2752	1332	17163	
Total Year 1972	1714	1369	1071	1260	953	1406	952	1561	1647	1633	1447	2802	1590	19405	
b. Under \$50.00 in Value:															
Larceny	1716	600	691	1114	791	784	808	1241	787	735	1738	1791	1432	14228	
Larceny from Motor Vehicle	143	309	187	133	196	201	165	232	203	159	159	200	309	2596	
Larceny from Person	283	148	73	314	94	173	143	126	72	196	123	206	103	2054	
Attempt Larceny	27	31	16	37	38	36	28	31	22	39	32	41	28	406	
Attempt Larceny from Motor Vehicle	17	36	32	20	22	33	23	41	13	19	25	26	43	350	
Attempt Larceny from Person	13	3	5	13	6	6	8	2	7	4	7	7	7	88	
Total Year 1974	2199	1127	1004	1631	1147	1233	1175	1673	1104	1152	2084	2271	1922	19722	
Total Year 1973	1628	841	817	1088	890	1098	997	1390	934	1066	1608	1946	2323	16626	
Total Year 1972	1969	958	1173	1121	1150	1113	1200	1660	1299	1435	1658	2230	2334	19300	
TOTAL LARCENY - THEFT:															
Total Year 1974	4170	2588	2317	2942	2154	2989	2299	3537	2861	2679	3712	5757	4300	42305	
Total Year 1973	3232	1874	1785	2185	1550	2550	1811	2821	2411	2403	2814	4698	3655	33789	
Total Year 1972	3683	2327	2244	2381	2103	2519	2152	3221	2946	3068	3105	5032	3924	38705	
AUTO THEFT:															
Total Year 1974	1137	1666	1495	1602	1826	1956	2376	2504	2522	2123	1964	2441	1971	25583	
Total Year 1973	1217	1320	1331	1663	1756	1921	2160	2339	2186	1960	1789	2243	1272	23148	
Total Year 1972	1106	1253	970	1543	1492	1568	2271	1944	1895	1883	1365	2048	1184	20522	
TOTAL PART I CLASSES:															
Total Year 1974	8763	8919	7579	11929	9813	11041	11033	12142	11449	10803	12195	15349	11703	142718	
Total Year 1973	7615	7108	6175	10066	7991	9808	10049	10448	10139	9941	10167	12267	9564	121338	
Total Year 1972	7586	8168	6653	11339	8981	10183	10753	11081	10790	10824	10271	13279	9739	129647	

CERTAIN PART II OFFENSES BY PRECINCT HAPPENED - YEAR 1974
Also Three Year Comparison of Group Totals

Uniform Classification of Offenses (Certain Part II Offenses)	P R E C I N C T														TOTAL
	1	2	4	5	6	7	10	11	12	13	14	15	16		
FORGERY AND COUNTERFEITING:															
Year 1974	235	80	72	143	134	93	141	112	244	107	200	243	184	1988	
Year 1973	212	90	93	91	116	119	128	85	112	87	196	155	91	1575	
Year 1972	180	67	107	91	94	79	122	102	104	109	95	95	87	1333	
EMBEZZLEMENT AND FRAUD:															
Larceny by Conversion	25	11	10	11	19	16	17	6	20	31	38	26	15	245	
Larceny by Trick	145	33	16	40	93	40	69	29	98	75	90	58	49	835	
"No Account" Check	79	6	14	13	7	13	8	31	35	41	68	61	55	431	
"Insufficient Funds" Check	29	11	11	13	6	17	7	30	25	22	39	57	33	300	
Miscellaneous	164	157	36	74	44	39	54	63	56	70	86	39	91	1012	
Total Year 1974	442	218	87	151	169	125	155	159	234	239	321	280	243	2823	
Total Year 1973	437	143	76	180	129	233	189	178	199	170	398	349	292	2973	
Total Year 1972	432	117	81	178	121	169	174	203	275	180	294	261	163	2648	
WEAPONS: CARRY, POSSESS, ETC. :															
Year 1974	224	202	126	279	112	251	375	171	142	348	176	181	73	2660	
Year 1973	270	252	84	330	155	236	371	156	162	412	200	192	41	2821	
Year 1972	249	327	86	304	123	215	363	164	127	415	157	137	36	2703	
SEX OFFENSES (ex. Rape-Forcible, Prost., Com'l Vice):															
Accosting a Child	1	--	5	3	1	1	2	1	--	1	1	2	2	20	
Crime Against Nature	1	3	3	5	1	7	3	2	5	3	2	--	2	36	
Gross Indecency Between Males	1	--	1	2	1	1	--	1	3	2	1	4	4	20	
Gross Indecency Between Males and Females	2	6	5	4	5	9	6	10	3	8	3	7	7	75	
Indecent Exposure	20	16	21	21	23	11	25	51	16	61	28	78	92	463	
Indecent Liberties with Male Child	--	1	1	1	2	--	--	1	1	1	3	1	1	13	
Indecent Liberties with Female Child	2	4	10	9	5	1	6	7	5	1	11	9	15	85	
Statutory Rape	2	9	7	18	10	18	7	7	5	8	10	9	10	120	
Miscellaneous	--	--	--	1	--	--	--	--	1	--	--	--	--	2	
Total Year 1974	29	39	53	64	47	48	49	79	37	86	60	110	133	834	
Total Year 1973	25	58	47	76	54	62	46	81	54	62	84	98	137	884	
Total Year 1972	29	39	56	76	56	72	62	85	48	75	74	128	131	931	
DISORDERLY CONDUCT:															
Disturbing the Peace	--	--	--	--	1	1	--	--	--	--	--	1	--	3	
Indecent and Obscene Conduct	5	--	1	2	1	--	--	3	1	--	1	1	1	14	
Indecent and Obscene Language	--	1	--	--	--	--	--	--	--	--	1	1	4	7	
Miscellaneous	5	1	1	3	2	1	--	3	3	2	2	3	5	31	
Total Year 1974	8	4	2	4	5	3	1	5	2	1	4	4	14	60	
Total Year 1973	10	3	2	4	9	3	3	5	2	9	6	9	13	76	
ARSON:															
Year 1974	65	69	104	174	77	95	104	125	71	88	90	125	56	1243	
Year 1973	32	72	65	164	87	104	95	116	71	78	91	83	70	1128	
Year 1972	50	94	75	188	90	113	76	136	65	59	115	88	54	1203	
MALICIOUS DESTRUCTION OF PROPERTY:															
Year 1974	493	966	1645	1442	1362	1126	1025	1967	1233	826	1465	2221	2214	17985	
Year 1973	492	822	1300	1233	1076	971	896	1638	1225	731	1265	1967	1915	15531	
Year 1972	400	687	1272	1016	956	854	764	1792	1072	665	1142	1607	1587	13814	
OTHER MISCELLANEOUS OFFENSES:															
Year 1974	540	421	402	840	489	631	790	444	767	601	691	620	535	7771	
Year 1973	709	503	425	819	408	528	743	426	512	603	775	581	380	7412	
Year 1972	545	438	315	801	381	430	644	512	400	612	463	473	262	6276	
TOTAL PART II CLASSES:															
Year 1974	2033	1996	2490	3096	2392	2370	2639	3060	2731	2297	3005	3783	3443	35335	
Year 1973	2185	1944	2092	2897	1990	2256	2469	2685	2340	2144	3013	3429	2940	32384	
Year 1972	1895	1772	1994	2658	1830	1935	2209	2997	2093	2124	2346	2798	2333	28984	

ROBBERY - OBJECT OF ATTACK

COMMERCIAL PLACES		RESIDENCE	
Restaurant	590	Private Residence - Single	555
Grocery/Supermarket	518	Apartment	286
Gas Station	506	Private Residence - Multiple	81
Bar	347	Hotel Room	11
Beer/Party Store	317	Motel Room	6
Misc. Merchandising Establishment	317	Boarding/Rooming House	4
Bank/Financial Institution	183	TOTAL	943
Service Related Business	161		
Cleaner/Laundry	149	INDIVIDUAL	
Drug Store	104	Citizen/Male	9331
Hotel/Motel	83	Citizen/Female	4708
Building/Auto Supplies	60	Newsboy	947
Professional Office	43	Taxi Driver	318
Recreation	29	Delivery/Truck Driver	247
Other	98	Student	121
TOTAL	3485	Vendor	38
		Collector/Insurance	13
		Salesman	4
		Bus Driver	4
		Collector/Rent	2
		Miscellaneous Individual	2
		Apartment Manager	1
		Collector/Miscellaneous	1
		TOTAL	15737
PUBLIC PLACES			
Church	13		
Public School/Library	7		
Government Office/Property	4		
Post Office	1		
TOTAL	25		
GRAND TOTAL	20190		
MONEY VALUE	\$ 5,370,484		

ROBBERIES - THREE YEAR ANALYZATION
(Including Attempts)

	NUMBER OF ROBBERIES			PERCENT OF TOTAL		
	1974	1973	1972	1974	1973	1972
TOTAL ROBBERIES	20190	16249	17170	100.0	100.0	100.0
METHOD OF ATTACK - WEAPON						
Hand Gun	7946	6199	6629	39.4	38.2	38.6
Bodily Force	5701	4701	4885	28.2	29.0	28.5
Knife, Razor, Dirk	2509	2037	2295	12.4	12.5	13.4
Fear	2185	1868	2116	10.8	11.5	12.3
Blunt Instrument	728	687	590	3.6	4.2	3.4
Rifle or Shotgun	700	579	464	3.5	3.6	2.7
Other Sharp Instrument	365	137	158	1.8	0.8	0.9
Missile	30	17	18	0.1	0.1	0.1
Blackjack	22	18	11	0.1	0.1	0.1
Unknown	4	6	4	---	---	---
METHOD OF ESCAPE						
On Foot	12826	7307	8507	63.5	45.0	49.5
Automobile	3001	2343	2280	14.9	14.4	13.3
Bicycle	1185	654	404	5.9	4.0	2.4
Apprehended at Scene	235	194	67	1.2	1.2	0.4
Taxi Cab	64	34	44	0.3	0.2	0.3
Truck	24	22	15	0.1	0.1	0.1
Bus	8	8	7	---	---	---
Motor Bike	7	11	4	---	0.1	---
Others	2	---	---	---	---	---
Unknown	2838	5676	5842	14.1	34.9	34.0
PERSON COMMITTING OFFENSE						
White	1151	943	1062	5.7	5.8	6.2
Non-White	18582	14414	14870	92.0	88.7	86.6
Mixed Group	159	136	124	0.8	0.8	0.7
Unknown	298	756	1114	1.5	4.7	6.5
PRECINCT HAPPENED						
1st Precinct	1421	1191	1103	7.0	7.3	6.4
2nd Precinct	1521	1142	1291	7.5	7.0	7.5
4th Precinct	619	479	585	3.1	2.9	3.4
5th Precinct	2278	1781	1713	11.3	10.9	10.0
6th Precinct	1332	1067	1324	6.6	6.5	7.7
7th Precinct	1855	1587	1663	9.2	10.0	9.7
10th Precinct	2048	1800	1839	10.1	11.1	10.7
11th Precinct	1591	1184	1045	7.9	7.3	6.1
12th Precinct	1333	1217	1280	6.6	7.5	7.5
13th Precinct	2210	1837	2084	10.9	11.3	12.1
14th Precinct	1484	1270	1423	7.4	7.7	8.3
15th Precinct	1638	1121	1193	8.1	6.9	6.9
16th Precinct	860	573	627	4.3	3.5	3.7

BURGLARY - OBJECT OF ATTACK

COMMERCIAL PLACES		PUBLIC PLACES	
Miscellaneous Merchandising Establishment	1657	Schools/Public	1548
Service Related Business	1289	Church	368
Grocery/Supermarket	1121	Government Office/Property	269
Bar	1019	Library	14
Gas Station	895	Fire Station	9
Factory	742	Post Office	8
Restaurant	674	Police Station	1
Miscellaneous Business	500	Miscellaneous Public Places	11
Building/Auto Supply	461	TOTAL	2228
Professional Office	396		
Beer/Party Store	395		
Warehouse	318		
Cleaner/Laundry	302		
Business Office	301		
Shed, etc.	247		
Drug Store	199		
Recreation	136		
Vacant Building	127		
Bank/Financial Institution	45		
Hotel/Motel	46		
Other	497		
TOTAL	11367		
TRANSPORTATION			
Box Car	208		
Boat	38		
TOTAL	246		
GRAND TOTAL	42299		
MONEY VALUE	\$ 15,424,332		

BURGLARIES - THREE YEAR ANALYZATION
(Including Attempts)

	NUMBER OF BURGLARIES			PERCENT OF TOTAL		
	1974	1973	1972	1974	1973	1972
TOTAL BURGLARIES	42299	36537	42563	100.0	100.0	100.0
METHOD OF ENTRY						
Door	23994	20970	24187	56.7	57.4	56.8
Window	14499	12565	15404	34.3	34.4	36.2
Roof or Skylight	809	559	523	1.9	1.5	1.2
Milk Chute	264	296	418	0.6	0.8	1.0
Display Window	364	107	109	0.9	0.3	0.3
Coal Chute	20	12	10	---	---	---
Transom	73	35	43	0.2	0.1	0.1
Others	433	362	362	1.0	1.0	0.9
Unknown	1843	1631	1507	4.4	4.5	3.5
PRECINCT HAPPENED						
1st Precinct	1298	1181	963	3.1	3.2	2.3
2nd Precinct	2207	1870	2481	5.2	5.2	5.8
4th Precinct	2495	2010	2297	5.9	5.5	5.4
5th Precinct	3728	3064	4486	8.8	8.4	10.5
6th Precinct	3506	2721	3267	8.3	7.4	7.7
7th Precinct	3117	2821	3248	7.4	7.7	7.6
10th Precinct	3355	3154	3455	7.9	8.6	8.2
11th Precinct	3705	3338	4220	8.8	9.1	9.9
12th Precinct	3986	3619	4054	9.4	9.9	9.5
13th Precinct	2419	2511	2800	5.7	6.9	6.6
14th Precinct	4030	3345	3520	9.5	9.2	8.3
15th Precinct	4366	3314	4182	10.3	9.1	9.8
16th Precinct	4087	3589	3590	9.7	9.8	8.4

ARREST DISPOSITIONS
Three Year Period

47

Precinct/Section of Arresting Officer	Part I Prosecutions			Part II Prosecutions			Dismissed By Police			State Traffic Prosecutions			Golden Rule Drunk			Turned Over To Other Authorities			TOTAL ARRESTS		
	1974	1973	1972	1974	1973	1972	1974	1973	1972	1974	1973	1972	1974	1973	1972	1974	1973	1972	1974	1973	1972
First Precinct	2330	1633	1520	3140	2269	3076	2329	2058	2102	3203	3184	2422	378	349	294	388	374	432	11768	9867	9846
Second Precinct	612	635	664	1081	1120	1346	1312	1573	1800	2459	3037	3050	316	333	235	145	157	215	5925	6855	7310
Fourth Precinct	452	399	358	828	721	692	993	944	943	1991	2426	2374	268	312	250	253	168	199	4785	4970	4816
Fifth Precinct	1210	874	760	1784	1587	1517	2040	2000	1944	3545	3374	2332	302	388	193	166	186	242	9047	8409	6988
Sixth Precinct	490	406	508	789	864	783	1049	931	1096	1937	1844	1545	148	153	159	96	114	141	4509	4312	4233
Seventh Precinct	809	609	642	1310	1240	1132	1732	1752	1439	3213	2649	2025	231	324	163	130	126	161	7425	6700	5562
Tenth Precinct	738	774	699	1467	1344	1304	1711	1688	1899	2764	4119	3191	171	165	170	181	228	300	7032	8318	7563
Eleventh Precinct	815	700	641	1259	1080	976	944	1017	1003	2419	2496	1511	142	148	116	192	161	164	5771	5602	4411
Twelfth Precinct	590	505	543	939	870	756	872	842	1026	1774	1831	1344	94	130	82	109	127	158	4378	4305	3909
Thirteenth Precinct	638	552	491	1494	1763	1718	1548	1534	1512	3696	3303	2479	328	285	215	187	171	199	7891	7608	6614
Fourteenth Precinct	1273	946	800	1020	953	723	1610	1578	1274	3758	3418	2065	126	178	88	200	210	176	7987	7283	5126
Fifteenth Precinct	1124	984	905	1150	1141	979	1298	1296	1155	3108	3416	2738	207	247	104	225	232	262	7112	7316	6143
Sixteenth Precinct	629	466	455	571	582	533	836	783	682	1370	1571	1146	278	312	182	135	122	155	3819	3836	3153
PRECINCT TOTAL	11710	9483	8986	16832	15534	15535	18274	17996	17875	35237	36668	28223	2989	3324	2251	2407	2376	2804	87449	85381	75674
Stationary Traffic Section	8	14	31	6	17	83	5	11	22	26	64	59	--	--	--	--	1	6	45	107	201
Accident Prevention Section	19	32	19	11	33	47	16	43	39	133	389	324	--	--	4	5	6	17	184	503	450
Motor Traffic Section	48	68	74	89	207	208	79	133	145	1460	3532	3530	--	--	2	48	114	145	1724	4054	4104
Traffic Safety Section	--	--	1	1	1	--	--	--	2	3	5	10	--	--	--	--	1	1	4	7	14
Public Vehicle Section	--	--	1	--	3	8	1	1	1	5	9	31	--	--	--	--	--	1	6	13	42
Harbormaster Section	4	6	20	2	14	9	10	14	21	47	47	41	--	--	--	1	2	3	64	83	94
Mounted Section	2	3	23	4	57	280	3	46	52	17	131	186	--	--	--	1	3	9	27	240	550
TRAFFIC TOTAL	81	123	169	113	332	635	114	248	282	1691	4177	4181	--	--	6	55	127	182	2054	5007	5455
Criminal Investigation Section ..	464	539	479	631	945	943	249	401	474	66	79	85	--	--	--	49	54	63	1459	2018	2044
Court Section	11	11	25	34	64	85	3	4	21	18	41	67	--	--	--	6	10	31	72	130	229
Traffic Court Unit	--	2	2	10	20	48	3	2	6	40	91	108	--	--	--	9	10	11	62	125	175
Youth Services Section	2	7	3	2	2	5	--	3	3	1	3	2	--	--	--	--	--	1	5	15	14
Tactical Mobile Section	275	362	354	764	1280	1207	862	1587	1710	2590	4107	3526	--	--	--	113	200	705	4604	7536	7002
Felony Prevention Section	44	166	253	85	742	642	58	853	1091	38	213	231	--	--	--	8	49	74	241	2023	2291
Community Oriented Patrol	2	13	24	7	26	47	1	20	53	4	40	87	--	--	--	--	3	10	14	102	221
Vice Section	21	23	19	1991	3000	2782	223	567	581	43	65	90	--	--	--	17	14	30	2295	3669	3502
Women & Children Section	170	129	82	471	167	100	123	50	42	128	34	11	207	273	168	17	6	5	1116	659	408
Miscellaneous Units	25	36	141	57	195	2872	47	52	656	95	132	218	--	--	--	3	8	59	227	423	3946
SECTION TOTAL	1014	1288	1382	4052	6441	8731	1577	3539	4637	3023	4805	4425	207	273	168	222	354	489	10095	16700	19832
OUT CITY TOTAL	74	87	136	150	220	327	161	157	276	411	471	699	--	--	--	267	372	529	1065	1307	1967
GRAND TOTAL	12879	10981	10673	21147	22527	25228	20126	21940	23070	40362	46121	37528	3196	3597	2425	2951	3229	4004	100663	108395	102928

ARRESTS RESULTING IN PROSECUTION

UNIFORM CLASSIFICATION OF OFFENSES	CURRENT YEAR			1973		1972		PROSECUTIONS		
	Prosecutions	Convictions	Pending	Prosecutions	Convictions	Prosecutions	Convictions	PERCENT OF INCREASE OR DECREASE		
								1974-73	1973-72	1974-72
Homicide and Non-Negligent Manslaughter	474	130	269	438	159	338	129	+ 8.2	+29.6	+40.2
Manslaughter by Negligence	21	4	15	21	8	19	6	-----	+10.5	+10.5
Rape - Forcible	251	81	111	225	70	143	53	+11.6	+57.3	+75.5
Robbery	1543	527	712	1332	521	1308	589	+15.8	+ 1.8	+18.0
Assaults	3118	1127	810	3071	996	2642	1098	+ 1.5	+16.2	+18.0
Burglary - Breaking or Entering	1939	812	726	1521	677	1654	830	+27.5	- 8.1	+17.2
Larceny - Theft (except Auto Theft)	5256	2645	911	3990	1862	4233	2918	+31.7	- 5.7	+24.2
* Auto Theft	277	106	99	383	155	336	152	-27.7	+14.0	-17.6
Total Part I Classes	12879	5432	3653	10981	4448	10673	5775	+17.3	+ 2.9	+20.7
Forgery and Counterfeiting	370	172	116	332	169	323	196	+11.4	+ 2.8	+14.6
Embezzlement and Fraud	695	292	224	673	247	737	394	+ 3.3	- 8.7	- 5.7
Stolen Property; Buy, Receive, Possess	995	363	368	1102	381	732	317	- 9.7	+50.5	+35.9
Weapons; Carrying, Possessing, etc.	3226	1407	1060	3574	1466	3500	1572	- 9.7	+ 2.1	- 7.8
Prostitution and Commercialized Vice	3219	1023	938	3857	1438	3428	1520	-16.6	+12.5	- 6.1
Sex Offenses (ex. Rape-Prost., Com'l Vice) ..	147	44	68	154	69	80	38	- 4.6	+92.5	+83.7
Offenses Against the Family and Children	170	36	34	341	114	639	377	-50.1	-46.6	-73.4
Narcotic Drug Laws	3978	1327	1524	3881	1383	4169	1770	+ 2.5	- 6.9	- 4.6
Liquor Laws	1061	517	285	1310	633	1691	1041	-19.0	-22.5	-37.3
Drunkenness	314	149	75	770	442	4180	3544	-59.2	-81.6	-92.5
Disorderly Conduct	582	261	161	461	231	469	338	+26.2	- 1.7	+24.1
Vagrancy	18	4	6	48	27	294	229	-62.5	-83.7	-93.9
Gambling	253	82	103	344	134	349	217	-26.5	- 1.4	-27.5
Driving While Intoxicated	5160	2936	1467	5520	2838	3488	1900	- 6.5	+58.3	+47.9
** All Other Offenses	41321	19259	17235	45807	27115	38677	30308	- 9.8	+18.4	+ 6.3
Total Part II Classes	61509	27872	23664	68174	36687	62756	43761	- 9.8	+ 8.6	- 2.0
GRAND TOTAL	74388	33304	27317	79155	41135	73429	49536	- 6.0	+ 7.8	+ 1.3

NOTE: This report does not include Juveniles age 16 and under.

* Many Auto Thefts prosecuted as Larcenies

** Includes Registered Traffic Arrests

48

TOTAL CRIME AND PROSECUTION ARRESTS
TWENTY-FIVE YEAR COMPARISON

YEAR	MURDER	RAPE	ROBBERY	ASSAULT	BURGLARY	LARCENY OVER \$50.00	LARCENY UNDER \$50.00	AUTO THEFT	TOTAL PART I	TOTAL PART II	TOTAL CRIME	PROSECUTION ARRESTS
1950	113	728	2320	3640	9474	3021	23367	3757	46452	17975	64427	32586
1951	129	856	2500	3599	9213	3624	26742	4754	51457	17518	68975	30299
1952	109	775	2253	3614	8770	3045	22715	5355	46667	15782	62449	28798
1953	130	671	2841	3870	9131	3415	22672	6988	49762	18604	68366	33278
1954	108	704	3540	3760	11029	3368	26042	7140	55725	20019	75744	33178
1955	140	686	2905	4011	9365	3123	24158	6865	51282	20721	72003	34426
1956	105	555	3260	4160	10326	3269	26451	6685	54938	21872	76810	33128
1957	119	* 159	3041	4084	11568	3388	25405	6940	54730	22316	77046	30147
1958	110	237	3367	4173	14187	3703	29455	6029	61275	24802	86077	30729
1959	106	278	3196	4706	14274	3816	28310	6068	60782	25689	86471	28704
1960	150	332	3988	5012	16500	4800	31658	6018	68480	30499	98979	32731
1961	136	315	3397	5052	15300	4364	29973	6164	64723	29630	94353	36242
1962	131	333	4206	5134	16636	5575	33418	7289	72753	32230	104983	36332
1963	125	393	4608	4496	16963	5724	34086	8418	74846	29927	104773	36420
1964	125	475	4739	7804	15839	6169	30206	9610	75000	20457	95457	47971
1965	188	648	5498	6410	18460	7416	25083	12661	76397	17869	94266	53035
1966	214	744	9102	7493	30077	11497	29341	13260	101773	30004	131777	64591
1967	281	733	11973	8400	38307	14801	27725	16215	118469	35732	154201	68385
1968	389	954	13774	8172	37932	17660	24130	19303	122351	33068	155419	60067
1969	439	913	17414	8751	41264	22236	25970	22438	139468	31753	171221	60217
1970	495	819	23038	8514	50868	26665	30056	20864	161341	31545	192886	61732
1971	577	853	20752	8486	51528	25340	25831	22770	156183	29759	185942	68933
1972	601	818	17170	9218	42563	19405	19300	20522	129647	28984	158631	73429
1973	672	1148	16249	9748	36537	17163	16626	23148	121338	32384	153722	79155
1974	714	1260	20190	10319	42299	22583	19722	25583	142718	35335	178053	74388

* Certain categories changed from Part I Classes to Part II Classes.

TRAFFIC VIOLATIONS - BY PRECINCT AND SECTION OF OFFICER

VIOLATION GROUPS	- P R E C I N C T S -																Tactical Mobile Sect.	Harbormaster	Accident Prevention	Public Vehicle	Stationary Traffic	Motor Traffic	Mounted	Traffic Safety	Youth	Other Units	TOTAL
	1	2	4	5	6	7	10	11	12	13	14	15	16														
VIOLATION OF ROAD & DRIVING LAWS:																											
Reckless Driving	539	479	479	727	490	788	845	711	698	961	724	934	445	771	3	2928	36	57	7063	41	50	2	28	19799			
Extremely Hazardous Traffic Violations	311	392	499	661	426	668	582	678	518	757	615	858	529	438	5	3058	5	13	1364	7	10	--	2	12396			
Speeding Violations	258	1067	2917	2601	1657	1857	1577	2571	1885	1717	2347	3350	1723	1889	55	882	3	8	17190	8	149	2	7	45720			
Over 55 mph on Expressway	59	132	361	5	47	43	92	66	20	143	163	45	122	109	--	180	1	3	7193	--	62	--	1	8847			
Speeding-Intersection or Alley	2	1	15	19	3	7	11	1	1	19	13	10	2	9	--	3	--	1	23	--	--	--	--	140			
Exceed Stipulated Speed-20 mph	2	1	--	1	2	97	--	--	--	--	--	1	--	1	20	--	1	--	1	--	--	--	--	127			
Truck Speeding on Expressway	--	--	2	--	1	--	--	--	--	--	--	--	--	--	--	1	--	--	1	--	--	--	--	5			
Slow Moving Vehicle on Expressway	--	3	1	--	--	3	1	1	--	3	2	3	1	7	--	9	--	--	425	--	4	--	--	463			
Backing Violations	92	139	94	270	168	149	192	77	88	131	65	120	46	130	1	172	2	11	193	9	--	--	--	2149			
Blockading Violations	305	141	84	403	63	257	728	230	174	562	250	171	50	595	13	4	9	159	997	121	9	--	18	5343			
Driving - Prohibited Areas	20	57	83	54	159	215	173	199	146	74	123	128	85	67	41	23	--	16	1924	11	15	--	5	3618			
Driver and Passenger Violations	12	9	17	13	6	30	11	20	9	9	22	35	32	29	7	--	1	1	85	4	3	--	12	367			
Misc. (regarding accidents)	4	8	35	32	17	22	14	27	8	8	19	46	35	--	305	--	--	--	--	--	--	--	--	580			
Signal Violations	1419	1563	999	1949	1716	2153	2110	1410	1470	2627	1476	1781	745	1692	2	718	44	82	4232	16	57	5	46	28312			
Failure to Stop	689	489	542	760	566	767	1159	912	964	900	631	1078	490	554	9	208	4	2	1836	35	24	--	8	12627			
Turning Violations	2435	3125	442	622	1785	1535	2749	1019	1735	4259	3170	2583	974	721	5	466	213	1261	13403	413	216	3	220	43354			
Other Misc. Traffic Violations	144	66	181	150	101	656	454	316	77	175	268	586	63	1104	2	46	9	3	2320	18	10	--	2	6751			
Pedestrian-Motorist Ordinance	18	7	8	7	4	9	19	9	9	23	11	14	9	12	--	46	1	47	153	13	--	--	--	419			
TOTAL	6309	7679	6759	8274	7211	9256	10717	8247	7802	12368	9899	11743	5351	8128	163	9049	329	1664	58403	696	609	12	349	191017			
PARKING VIOLATIONS	15967	10960	5997	14788	5197	11030	13477	10762	12142	28762	7231	7529	5062	1314	399	385	2397	20290	16161	41664	259	7	3860	235640			
OTHER TRAFFIC AND MOTOR VEHICLE LAWS:																											
Fail to Observe Misc. Regulations	692	274	196	189	156	370	213	189	114	392	106	128	55	599	26	59	14	107	1219	70	4	--	13	5185			
Other Misc. Moving Violations	11	9	33	12	2	21	16	10	14	38	16	23	10	44	--	10	--	--	800	1	3	--	2	1075			
Driver License Violations	198	218	298	455	221	401	266	309	269	523	532	448	373	526	6	546	19	10	1333	45	10	--	7	7013			
License Plate Violations	814	397	559	1164	731	1492	973	918	574	1746	1340	1302	870	1921	26	207	29	91	2665	154	25	--	68	18066			
Equipment Violations	980	1066	1063	1794	1231	4303	1717	2137	781	3120	2181	2618	1119	5027	19	168	23	46	7338	146	43	1	52	36973			
Pedestrian Ordinance	958	365	300	183	164	641	313	317	172	433	360	1034	250	275	1	224	16	4127	5988	706	91	3	131	17052			
Misc. Violations (non-moving)	2	3	1	9	2	10	2	6	1	2	1	8	10	5	1	1	--	1	10	--	--	--	--	75			
Bicycle Violations	4	2	--	8	3	33	--	8	4	16	11	38	3	11	1	3	--	1	80	--	6	2	2	236			
TOTAL	3659	2334	2450	3814	2510	7271	3500	3894	1929	6270	4547	5599	2690	8408	80	1218	101	4383	19433	1122	182	6	275	85675			
GRAND TOTAL	25935	20973	15206	26876	14918	27557	27694	22903	21873	47400	21677	24871	13103	17850	642	10652	2827	26337	93997	43482	1050	25	4484	512332			

ORDINANCE VIOLATIONS - OTHER THAN TRAFFIC

VIOLATIONS	TOTAL FOR YEAR		
	1974	1973	1972
Taxi Violations	3462	2630	2278
Taxi - No Public Vehicle License	558	689	521
Taxi - No Bond Plate	36	144	75
Taxi - Improper Trip Sheet	226	232	83
Curfew - Adult	75	134	129
Curfew - Juvenile	765	883	781
Juvenile in Theatre After Hours	1	--	2
Disorderly Person	7296	7526	11306
Accost and Solicit	3152	1963 *	--
Other Sex Related Violations	1368	384 *	--
Swimming in Prohibited Area	7	32	24
Possess Gambling Equipment	7	9	5
Falsifying Age to Obtain Liquor	21	117	405
Alcohol Related Violations	3548	1432 *	--
Fire Ordinance	--	3	2
Fireworks and Firearms	91	146	190
Smoking in Theatre or Public Building	12	19	11
Cap Pistol and Air Gun	122	121	107
Loitering - Adult	2180	1477	1648
Loitering - Juvenile	911	825	627
Minor in Poolroom	11	29	37
Nuisance	4326	3091	4950
Obstruct Sidewalk	8	13	7
Playing Ball in Street	7	8	15
Switch-blade on Person	343	336	319
Cigarettes to Minor	2	3	2
Juvenile Possessing Cigarettes	1264	1174	1051
Hotel Register - Fail to Keep	17	22	82
Poolroom - Allow Minors or Gambling	8	40	32
Littering	729	826	693
Dogs at Large	78	41	189
Dog Bite	9	8	11
Street Trades Ordinance	16	32	20
Peddling in Loop Area	106	160	318
Parking Lot	41	85	103
Railroad Delay Crossing	229	224	183
Throwing Objects at Moving Vehicles	20	8	8
Glue Sniffing or Possession by Minor	122	184	253
Selling Glue to Minor	--	--	6
Possess Narcotic Paraphernalia	722	651	897
Excessive Smoke (Rubbish)	47	46	21
Reckless Operation of a Boat	2	6	3
Snow and Ice (Fail to Remove)	9	9	11
Miscellaneous Violations	869	885	822
Failure of Business to Obtain License:			
Beverage Establishment	1	--	--
Billiard Room	1	7	--
Bulk Food and Meat Establishment	2	4	9
Cigarette Dealer	2	1	--
Cleaners	1	1	--
Contraceptive Device	4	21	2
Dance Hall and Cabaret	19	43	33
Dirt	7	--	--
Gas Station and Operator	3	5	3
Hotel	4	7	17
Junk Dealer	4	3	6
Junk Peddler	10	5	17
Mechanical Amusement Device	10	31	12
Parking Lot and Attendant	269	451	567
Picture Theatre	4	7	4
Restaurant	4	6	6
Second-Hand Auto	--	--	8
Used Auto Parts and Wreckers	30	26	16
Vendor	209	207	260
No Bicycle License	25	21	9
No Boat License	1	50	6
No Dog License	2	--	2
Miscellaneous Licenses	62	149	38
TOTAL VIOLATIONS	35514	27692	29242

* Violations became effective June 5, 1973.

YOUTH SERVICES BUREAU
Apprehensions made for Offenses, Boys and Girls Detained, in Youth Home and not Detained Combined
By Charge and Resident Precinct

Uniform Classification of Offenses	RESIDENCE PRECINCT																TOTAL
	1	2	4	5	6	7	10	11	12	13	14	15	16				
PART I CLASSES																	
CRIMINAL HOMICIDE:																	
Murder	1	5	1	3	--	3	1	1	1	2	6	1	1	26			
Manslaughter	--	--	--	--	1	--	--	--	--	--	--	--	--	1			
Negligent Homicide	--	--	--	--	--	--	--	--	--	--	1	--	--	1			
Total	1	5	1	3	1	3	1	1	1	2	7	1	1	28			
RAPE:																	
Rape	1	2	--	3	1	2	--	2	--	2	6	1	--	20			
Statutory Rape	--	--	--	--	2	--	--	--	--	--	--	1	--	3			
Assault with Intent to Rape	--	--	1	2	2	--	--	2	1	--	3	1	1	13			
Total	1	2	1	5	5	2	--	4	1	2	9	3	1	36			
ROBBERY:																	
Robbery Armed	8	19	8	45	16	21	18	33	27	14	30	28	12	279			
Robbery Not Armed	5	17	8	40	10	21	25	34	14	21	20	37	8	260			
Assault with Intent to Rob - Armed	1	6	2	5	1	2	6	6	5	2	1	3	--	40			
Assault with Intent to Rob - Not Armed	2	1	--	6	1	4	4	1	1	--	4	7	--	31			
Total	16	43	18	96	28	48	53	74	47	37	55	75	20	610			
ASSAULTS:																	
Felonious Assault	9	17	27	50	17	35	36	41	34	13	34	56	10	379			
Assault with intent to do Great Bodily Harm	--	--	1	1	--	--	5	1	1	1	--	3	--	13			
Attempt Felonious Assault	--	--	--	1	--	1	--	--	1	--	--	--	--	3			
Firearms, Discharge and Injury w/o Malice	--	1	--	--	--	--	--	--	--	--	--	--	--	1			
Assault with intent to Murder	1	--	--	4	5	5	3	1	--	--	2	3	--	24			
Assault and Battery	4	4	17	30	12	14	16	27	23	8	25	43	23	246			
Assault with Sex Intent	--	4	--	1	1	--	1	1	--	--	--	1	1	10			
Firearms, Discharge, No Malice, No Injury	--	--	--	--	--	--	--	--	--	--	--	1	--	1			
Total	14	26	45	87	35	55	61	71	59	22	61	107	34	677			
BURGLARY:																	
Break or Enter Business Place	10	24	23	27	28	15	13	21	24	7	25	49	47	313			
Break or Enter Dwelling	3	8	20	35	27	20	24	28	26	11	59	42	51	354			
Break or Enter School	2	13	16	19	9	11	16	2	4	5	6	8	18	129			
Break or Enter Others	3	7	33	11	4	6	4	3	3	1	3	12	11	101			
Break or Enter Coin Box	1	--	--	--	--	--	--	--	--	2	1	--	2	6			
Enter without Breaking, Business	2	--	2	--	5	--	--	--	--	1	3	--	1	14			
Enter without Breaking, Dwelling	3	2	--	2	1	2	--	1	--	--	1	--	2	14			
Attempt Break or Enter Business	4	2	2	1	2	4	1	1	--	2	7	2	6	34			
Attempt Break or Enter Dwelling	--	4	1	5	2	1	4	1	2	--	3	3	3	29			
Attempt Break or Enter Others	2	2	3	2	--	2	2	3	2	--	--	1	--	20			
Attempt Break or Enter Coin Box	1	--	--	1	--	--	--	--	--	--	--	--	--	2			
Total	31	62	100	103	78	61	64	60	61	29	108	117	142	1016			
LARCENY-THEFT (except Auto Theft):																	
Grand Larceny	--	--	--	--	--	--	--	--	--	--	--	6	1	7			
Larceny from Person	9	10	2	17	--	8	2	1	1	3	10	5	3	71			
Simple Larceny	2	7	5	3	2	5	3	2	6	2	4	6	10	57			
Larceny from Building	70	19	26	61	18	27	16	28	27	21	61	94	22	490			
Break into Motor Vehicle to steal Property	7	5	13	18	1	7	5	12	3	3	4	10	7	95			
Larceny from Motor Vehicle	--	1	1	--	--	1	--	2	--	1	--	2	2	10			
Attempt Larceny from Building	2	--	--	--	--	--	2	1	--	--	--	2	--	7			
Attempt Larceny from Motor Vehicle	--	3	3	--	1	2	--	1	--	--	1	1	--	12			
Attempt Larceny from Person	--	--	--	--	--	--	--	--	--	--	1	--	--	1			
Total	90	45	50	99	22	50	28	47	37	30	81	126	45	750			
AUTO THEFT:																	
Unlawfully Drive Away Motor Vehicle	14	39	49	72	39	62	59	30	76	41	46	68	24	619			
Attempt UDAA	--	--	--	1	--	1	1	1	2	--	3	2	4	15			
Total	14	39	49	73	39	63	60	31	78	41	49	70	28	634			
TOTAL PART I CLASSES	167	222	264	466	208	282	267	288	284	163	370	499	271	3751			

YOUTH SERVICES BUREAU (continued)

Apprehensions made for Offenses, Boys and Girls Detained in Youth Home and not Detained Combined
By Charge and Resident Precinct

Uniform Classification of Offenses	RESIDENCE PRECINCT															
	1	2	4	5	6	7	10	11	12	13	14	15	16	TOTAL		
PART II CLASSES																
STOLEN PROPERTY; BUY, RECEIVE, POSSESS:																
Possession Stolen Motor Vehicle	1	5	4	--	5	--	7	1	1	3	8	1	3	39		
Receiving Stolen Property	18	27	58	29	26	22	33	49	31	31	37	48	34	443		
Total	19	32	62	29	31	22	40	50	32	34	45	49	37	482		
LARCENY BY TRICK	1	--	--	2	--	2	--	--	--	--	--	--	1	6		
UTTERING & PUBLISHING	1	--	--	1	--	--	1	--	--	--	1	2	--	6		
WEAPONS; CARRYING, POSSESSING, ETC. :																
Carrying Concealed Weapon	3	6	2	21	7	12	17	9	8	11	12	8	9	125		
Carrying Weapon with Unlawful Intent	--	--	1	--	--	--	--	--	--	--	1	--	--	2		
Weapon, Possess, Sell any Unlawfully	--	1	1	3	3	2	1	2	1	--	2	1	--	17		
Total	3	7	4	24	10	14	18	11	9	11	15	9	9	144		
SEX OFFENSES:																
Accosting and Soliciting	1	2	1	1	1	--	3	--	2	3	2	--	1	17		
Attempt Gross Indecency between Males	1	--	--	--	--	--	--	--	--	--	--	--	--	1		
Crime Against Nature	--	--	2	--	--	--	--	2	2	1	--	--	--	7		
Gross Indecency between Males	--	--	--	--	--	--	--	1	--	--	--	1	--	2		
Gross Indecency between Males and Females ..	2	1	1	--	--	--	--	--	1	2	--	--	--	7		
Indecent Exposure of Person	--	--	1	--	--	--	--	--	1	--	1	1	--	4		
Indecent Liberties with Male Child	--	--	--	1	--	--	--	--	1	--	--	--	--	2		
Indecent Liberties with Female Child	--	2	--	1	--	--	1	--	1	--	1	--	--	6		
Statutory Rape	--	1	--	1	2	1	2	4	2	4	--	3	3	23		
Total	4	6	5	3	4	1	7	6	9	9	3	5	4	69		
NARCOTIC DRUG LAWS (VCSA)	2	7	5	7	7	2	6	5	6	10	9	12	12	90		
DISORDERLY CONDUCT:																
Drunk Juvenile	--	--	--	1	--	1	--	--	--	--	--	1	1	4		
Disturb the Peace and Create Improper Disturbance Around School	1	4	2	18	5	18	2	1	5	5	4	18	5	88		
Indecent and Obscene Language	--	--	--	--	--	--	--	--	--	--	--	--	2	2		
Total	1	4	2	19	5	19	2	1	5	5	4	19	8	94		
VAGRANCY - LODGER	--	--	--	--	1	--	--	--	--	--	--	--	--	1		
GAMBLING - VIOLATION STATE LAW	--	--	--	--	--	--	--	--	--	1	--	--	--	1		
TRAFFIC VIOLATION - CITY ORDINANCE	1	--	1	--	--	1	--	--	--	--	--	--	--	3		
ALL OTHER OFFENSES:																
Arson	--	--	1	3	1	5	1	6	2	1	3	10	3	36		
Carless Use of Firearms	--	--	1	3	2	--	1	1	1	1	2	3	--	15		
Violation City Ordinance, Miscellaneous	1	1	4	9	--	3	3	1	3	1	3	6	4	39		
Cruelty to Animals	--	--	7	--	--	--	--	--	--	--	--	--	--	7		
Explosives, Stench Bombs	--	--	--	--	--	--	--	--	1	--	--	--	--	1		
Extortion, Malicious Threats	--	--	--	1	--	1	2	1	1	--	--	1	--	7		
False Report of Felony	--	1	--	--	--	1	--	--	--	--	--	1	--	3		
Malicious Destruction of Property	1	9	16	23	8	14	11	13	11	3	13	29	19	170		
Tampering with Motor Vehicle	1	4	7	4	1	5	5	2	12	11	--	6	5	63		
Unlawfully Taking and Using Motor Vehicle ..	2	8	2	--	2	--	1	2	3	4	5	3	6	38		
Violation U. S. Code	1	--	--	2	--	1	2	3	--	--	1	--	--	10		
Police Witness	--	--	1	--	--	--	--	--	--	--	--	--	--	1		
Truant from Home	21	61	84	88	92	82	107	102	97	73	106	117	109	1139		
Knife Ordinance	--	--	--	1	--	--	--	--	--	1	1	--	--	3		
All Others	2	4	7	5	6	5	1	2	5	1	6	14	5	63		
Total	29	88	130	139	112	117	134	133	136	96	140	190	151	1595		
TOTAL PART II CLASSES	61	144	209	224	170	178	208	206	197	166	220	286	222	2491		
GRAND TOTAL	228	366	473	690	378	460	475	494	481	329	590	785	493	6242		

END