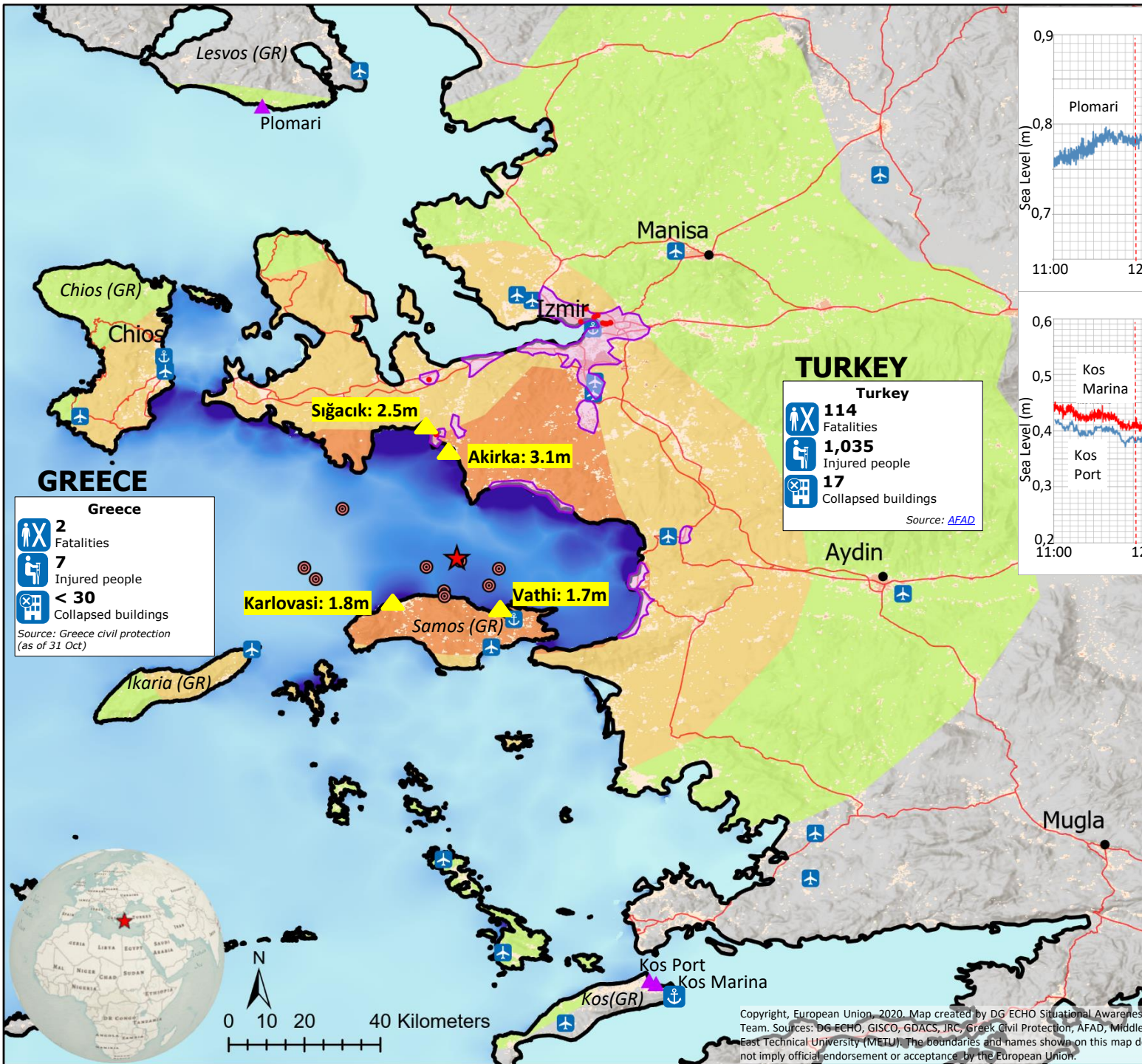


Earthquake and Tsunami in the Aegean Sea of 30 October 2020



GREECE

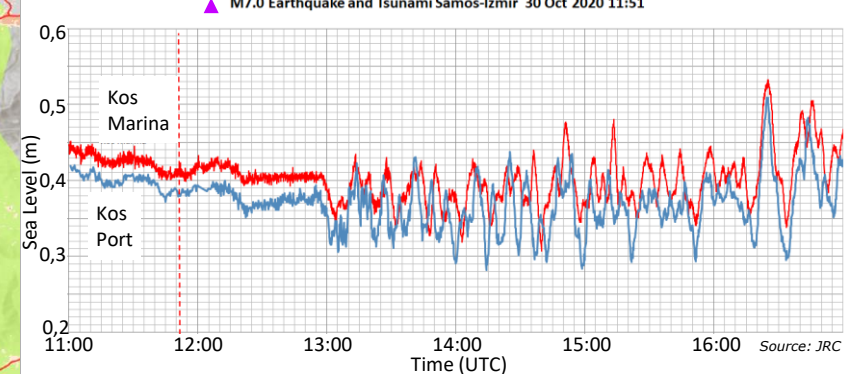
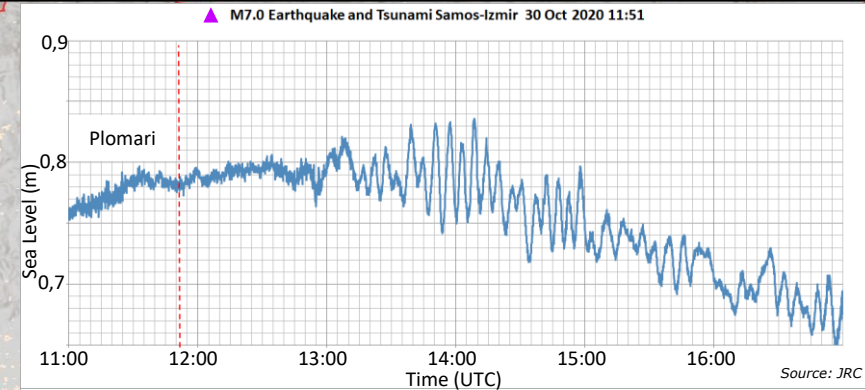
- 2 Fatalities
- 7 Injured people
- < 30 Collapsed buildings

Source: Greece civil protection (as of 31 Oct)

TURKEY

- 114 Fatalities
- 1,035 Injured people
- 17 Collapsed buildings

Source: AFAD



Exposed population

| | |
|------|--------------------|
| V | 3,900 people |
| VI | 2.1 million people |
| VII | 1.7 million people |
| VIII | 2.2 million people |

Main event

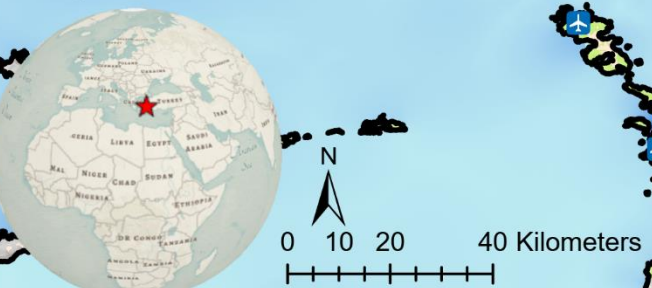
Magnitude: **7.0 M**

Moment tensor:

fault plane solution

Depth: **21 km**

- City
- Populated area
- Country border
- Earthquake intensity
 - V (Moderate)
 - VI (Strong)
 - VII (Very strong)
 - VIII (Severe)
- Area of interest
- Damaged / destroyed building
- ⊙ Aftershock (>Mw 4.0)
- ⚓ Main port
- ✈ Main airport
- ▲ Measured maximum tsunami height Source: METU university
- ▲ Operational inexpensive device for sea-level measurement (IDSL)
- Tsunami maximum height (meter)
 - High : 1,74
 - Low : -0,02 Source: JRC



Copyright, European Union, 2020. Map created by DG ECHO Situational Awareness Team. Sources: DG ECHO, GISCO, GDACS, JRC, Greek Civil Protection, AFAD, Middle-East Technical University (METU). The boundaries and names shown on this map do not imply official endorsement or acceptance by the European Union.