

Historic, Archive Document

Do not assume content reflects current scientific knowledge, policies, or practices.

4.23
JAN 20 1921

HILL'S EVERGREENS

Home Trees Ever Beautiful

1921



Our Guarantee

We guarantee that all goods purchased from us will reach you safely and in good condition; be found true to name and prove entirely satisfactory, or we cheerfully refund money paid.

THE D. HILL NURSERY CO., Inc.

D. Hill
President



CHAS. H. BIRDELL, President
WILLIAM S. BIRDELL, Cashier
DUNDEE SQUARE BANK
DUNDEE, ILLINOIS
FOUNDED 1854

Elgin National Bank

CAPITAL \$ 100,000.00
EDWARD SCHMIDT, President
WM. HURKARD, Vice-President
C. P. O'HARA, Cashier
C. A. DAVID, Asst. Cashier

ELGIN, ILL.

TO WHOM IT MAY CONCERN:

I am glad to recommend the D. Hill Nursery Company Inc. to anyone desiring to purchase evergreens etc. I have known Mr. David Hill for over thirty years, and his sons all their lives, and all have the highest reputation of square dealing.

By careful attention to the quality of their stock, they have gradually built up an immense big business, and are shipping stock to all parts of the world.

F. W. Rice President,

TO WHOM IT MAY CONCERN:

D. Hill, and successor, The D. Hill Nursery Co. Inc., of Dundee, Ills., have for many years been valued depositors and customers of this Bank.

They have at Dundee one of the largest evergreen nurseries in the world and the high quality of their goods has brought them a very large business.

They have the highest reputation for honesty and fair dealing and we cheerfully recommend them to anyone desiring goods in their line.

THE ELGIN NATIONAL BANK,

E. W. Keane
Cashier.

What Others Say

I am more than satisfied with my Evergreens. Have had considerable experience in Arboriculture and Horticulture, and I have never seen such value given.

GEORGE G. PABON,
Indianapolis, Ind.

Evergreens upon my grounds are very attractive and greatly admired. The state tree specialist tells me that he has never seen finer specimens.

W. G. PENGELLY,
Reynoldsburg, Ohio.

The Evergreens arrived in first-class condition a few days ago, and I am well pleased with them.

G. H. SPENCER,
Duluth, Minn.

Evergreens just received. The packing and care you take is worth a good deal to those who want the best in nursery goods.

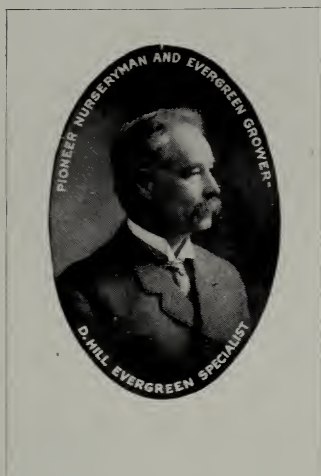
LOUIS D. TRUDEAU,
Woburn, Mass.

Permit me to congratulate you upon the excellent condition in which I received the last shipment of Evergreens. I am very much pleased.

MARVIN B. POOL,
Midlothian, Ill.

I desire to compliment you on the manner in which Evergreens arrived. Am surely more than pleased with their excellent quality.

FRANK C. KLODE,
Milwaukee, Wis.



A Personal Greeting

To Old Friends and New: Each year I realize more and more that any catalog can give no more than a *suggestion* of the grandeur of Evergreens, as I have learned to know them through the association of a lifetime.

When you know Evergreens, you feel in their presence the hush of the vast forest—you see the silent

sentinels, Evergreens, typifying permanency—defying time and the elements.

The Evergreen is something nature has given man to typify eternal promise—the promise that Spring shall always come again. In snowy Winter, it gives the only note of comforting color in the bleak landscape. In summer it adds serenity to the riot of colors that the smiling sun coaxes forth from nature.

An Evergreen is like an old friend—the storms of years—the strife of a life-time only make richer his noble character. So is a home surrounded by Evergreens like a man with many true friends. As the poet says:

"A toss of my cap to the Cedars!
The lovingest trees that be,
The time tides roll and the seasons veer,
Yet tender, sweeter, year by year,
My Cedars are true to me."

In the store house of nature are many things beyond your power to possess, but any lover of nature can surround his home with Evergreens. In their manner is grace—in their color is rest—in their presence is inspiration—their influence is perpetual. An Evergreen is truly a tree with a great and noble character.

D. Hill
President

Hill's Evergreens



Cultivating

In order to provide Specimen Evergreens in uniform quality that come up to the Hill standard, a process of careful individual selection is rigidly followed. When Hill Evergreens are four or five years old, we go through our immense blocks and select out the very best trees of uniform color, symmetry and habit of growth to transplant and grow into individual specimens. Out of our blocks of thousands, only a few hundred Evergreens are selected that come up to our **specimen standards**. This accounts for the perfection of each individual Hill Specimen Evergreen.

Transplanting and Root-Pruning

Frequent transplanting and root-pruning gives Hill Specimen Evergreens masses of fine, fibrous feeding roots. This, together with annual shearing, results in heavy, bushy, symmetrical tops.

Hill's Evergreens Are Balled and Burlapped and Hand Dug

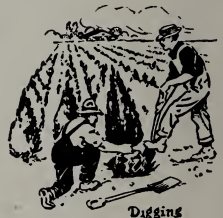
Every Hill Specimen Evergreen is carefully hand dug, leaving a large earth ball about the roots, which is securely burlapped. Our soil contains just enough clay so that earth ball remains intact. This method of digging leaves the roots undisturbed in a ball of rich nursery soil, and insures the success of Hill Specimen Evergreens in the hands of the planter. As additional protection, each earth ball is securely burlapped.

Careful Packing

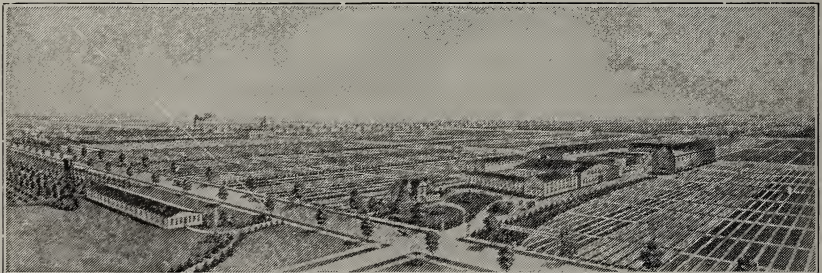
Seeing that your Evergreens are carefully packed is of equal importance. Our over sixty-five years' expert knowledge in properly packing Evergreens for long distance shipments, is your guarantee of safe arrival.

Landscape Service

Should you desire the service of a competent Landscape Architect to assist you in the proper arrangement of your trees, we will gladly put you in touch with some one in your immediate locality. We are in direct communication with all the leading Landscape Architects and can easily refer you to some one best qualified to handle your problems.



Digging



A Bird's Eye View of the Hill Nursery.



No one with an appreciation of the beautiful can fail to find inspiration in such as these.



Next to beholding such an imposing winter picture in a Hemlock is the desire to possess it on your grounds. Let us make your ambition a reality.

Hemlock

(*Abies Tsuga Canadensis*)

A Graceful Native Conifer

The Hemlock is native to a large area of the United States, types from various localities being somewhat different in their habit. Many years experimenting has taught us to collect seed from the true Northern type. Our own collectors in the northern forests of Wisconsin—select seed from none but the most magnificent specimens—which reproduce trees of a superior type.

Hill's best efforts are embodied in the culture of the Hemlock. The Evergreens in this catalog are native to various localities of America and foreign shores. Some varieties are purely the product of the nursery-men's skill, while others, like the Hemlock can never be improved upon as Nature has given them to us.

Careful shearing of the branchlets while growing in the nursery, gives Hill Hemlocks a compactness not found in the native trees. Because of the dense growth an ideal hedge, as the one photographed below, can be maintained by shearing, and still the individuality of the Hemlock is not lost.

Have you a shady nook—or a prominent corner whose beauty would be brought out by these "the most graceful of Evergreens"?

Price, Extra Selected Specimens, Balled and Burlapped

		Each	10
2 to 3 feet XXX*	B&B†	\$ 7.50	\$ 67.50
3 to 4 feet XXX	B&B	10.50	95.00
4 to 5 feet XXXX	B&B	12.50	112.50
5 to 6 feet XXXX	B&B	16.00	145.00

5 of same variety and size at 10 rate. *Each x indicates one transplanting.

†B&B signifies Balled and Burlapped



After a strenuous day as you enter such a drive, bordered with rich, soft beauty of the Hemlocks, you forget the stress of business and turn to the beauty of nature.

Colorado Douglas Fir

(*Abies Douglassi*)

The Douglas Firs in their primeval home offer a study for any student of tree life. Here is a group in rich dark green—side by side with those of lovely glaucous blue foliage. Trees that we grow here in the nursery are principally the green type, although frequently those of bluish cast make an appearance.

Any traveler through the Pacific coast region has doubtless admired and marvelled at the towering monarchs, 300 feet tall—the *Pacific* coast Douglas Fir a most important timber tree. The type from the Rockies of Colorado, the variety we propagate for landscape planting, is the little brother of the Coast Fir, 70 to 100 feet being the extreme in height for the Colorado type.

Especially in winter is the richness of the green color noticeable. While some varieties of Evergreens feel the withering hand of Jack Frost—the sturdy Douglas Fir remains unchanged.

In the sweeping boughs is expressed both grace and dignity. On account of its wide spreading branches and large size it is well suited for planting as a screen—a shelterbelt—or as an outline to an opening vista.

Price, Extra Selected Specimens, Balled and Burlapped

		Each	10
2 to 3 feet	xxx*	B&B†	\$ 6.25 \$ 50.00
3 to 4 feet	xxx	B&B	8.00 67.50
4 to 5 feet	xxxx	B&B	10.50 95.00
5 to 6 feet	xxxx	B&B	18.50 162.50
6 to 7 feet	xxxxx	B&B	21.00 187.50
7 to 8 feet	xxxxx	B&B	26.00 225.00
8 to 9 feet	xxxxx	B&B	31.00 275.00

5 of same variety and size at 10 rate. *Each x indicates one transplanting.
†B&B signifies Balled and Burlapped.



Specimen Evergreens ready for shipment, showing Hill method of balling and burlapping. Note the large balls securely wrapped and tied in burlap. This precaution in handling insures the success of Hill stock,



There is joy to behold such magnificence! The Colorado Douglas Fir (*Abies Douglassi*).



The Concolor or Silver Fir (*Abies Concolor*).

Concolor Fir

(*Abies Concolor*)

Queen of the Firs

Color varies from glaucous blue to dark green. The needles are long and soft, and have the typical fragrant Fir odor.

More than 30 years ago Mr. D. Hill, while on a visit to the Colorado Rockies was keenly impressed with the distinctive attractiveness of the Concolor Silver Fir. A handful of seed gathered on that trip was the nucleus of our stock which is chiefly responsible for the introduction of Concolor Silver Fir into general landscape planting.

The Concolor Silver Fir has that mountain freshness, which characterizes so many of the Evergreens from the Rockies—beautiful silvery blue color and tall, sturdy habit—so seldom combined in any tree.

Price, Extra Selected Specimens, Balled and Burlapped

		Each	10
1½ to 2 feet xxx*	B&B†	\$ 5.00	\$ 45.00
2 to 3 feet xxx	B&B	9.50	87.50
3 to 4 feet xxx	B&B	13.50	125.00
4 to 5 feet xxxx	B&B	16.00	150.00
5 to 6 feet xxxx	B&B	22.00	200.00
6 to 7 feet xxxxx	B&B	30.00	275.00
7 to 8 feet xxxxx	B&B	40.00	375.00



The Fragrant Balsam Fir

Balsam Fir

(*Abies Balsamea*)

Most Fragrant of all Evergreens

The characteristic odor of the northern woods is chiefly if not solely due to this Fir. The foliage is very fragrant, young growths often being used for making the favorite "Balsam Pillows." Makes a handsome lawn specimen, rarely growing over 30 to 40 feet high.

Price, Extra Selected Specimens, Balled and Burlapped

		Each	10
2 to 3 feet xxx*	B&B†	\$ 6.25	\$ 50.00
3 to 4 feet xxx	B&B	7.50	62.50
4 to 5 feet xxxx	B&B	10.50	85.00

5 of same variety and size at 10 rate

*Each x indicates one transplanting

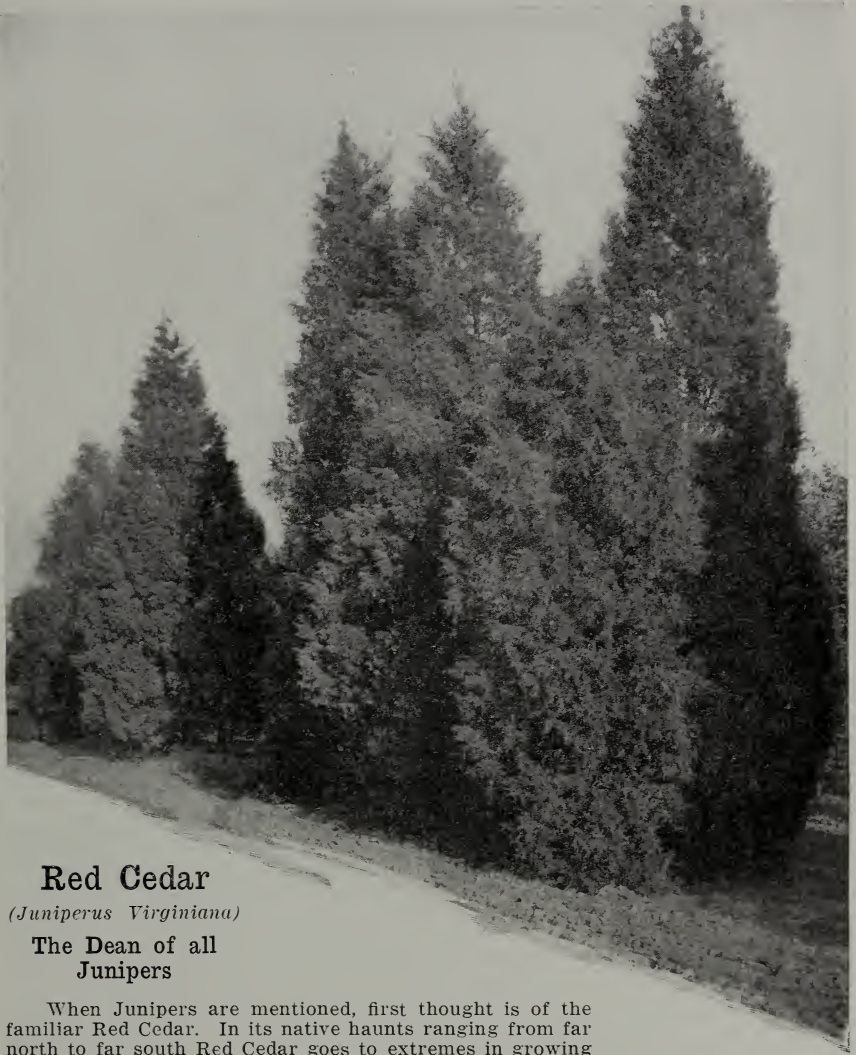
†B&B signifies Balled and Burlapped



What flower garden bears more beautiful coloring in continuous blooming—
than this group of Evergreens?



Red Cedar (*Juniperus Virginiana*).



Red Cedar

(*Juniperus Virginiana*)

The Dean of all Junipers

When Junipers are mentioned, first thought is of the familiar Red Cedar. In its native haunts ranging from far north to far south Red Cedar goes to extremes in growing habit, and varies from a low shrub to a towering tree 200 feet high. Years ago after careful experiment we selected a type uniform in habit and today propagate only tall, narrow trees that give a vertical note to the landscape.

In summer Red Cedar is a soft light green, in winter turning to purplish bronze color. The foliage and wood emits that pleasing, spicy, fragrant, woody, cedrus odor. In season the tree is covered with bright blue and silver berries. Red Cedar can also be trimmed into any shape, excellent for hedges and topiary work. (See page 51.)

Oh, here's a glee to the cedars,
 Our stanch old friends and true!
 What boots the snow, when the wild
 winds blow;
 For never a change do the cedars know
 All the long years through.

Price, Extra Selected Specimens, Balled and Burlapped

	Each	10
2 to 3 feet xxx*...B&B†	\$ 7.00	\$ 55.00
3 to 4 feet xxx ...B&B	8.50	75.00
4 to 5 feet xxx ...B&B	13.50	125.00

5 of same variety and size at 10 rate.

*Each x indicates one transplanting.

†B&B signifies Balled and Burlapped.



Juniper Glauca (*Juniperus Glauca*). Upright—symmetrical, fine blue color.

Juniper Glauca

(*Juniperus Glauca*)

A Distinct Blue Variety

Juniper Glauca is foremost among the interesting group of Junipers that have been developed from the *Juniperus Virginiana* (Red Cedar). Its great popularity is probably due to the beautiful silvery blue color. An added attraction is the purple and silver colored berries often borne abundantly.

A glance at the picture on opposite page will give a very good idea of its general appearance and habit. All of our Juniper Glauca's have been trimmed each year and individually staked, an operation which is costly, but which produces specimens of unusual symmetry and grace.

Juniper Glauca never grows very large, not over 15 to 20 feet and it can be kept even smaller if desired. Formerly the supply of stock came from Europe, and while it is not a common tree, we have a large and interesting stock.

Price, Extra Selected Specimens, Balled and Burlapped

		Each	10
2 to 3 feet xxx*	B&B†	\$ 8.50	\$ 75.00
3 to 4 feet xxx	B&B	12.50	100.00
4 to 5 feet xxxx	B&B	17.50	162.50

Counarti Juniper

(*Juniperus Counarti*)

Handsome, Dark Green

In outline and general habit Counarti Juniper is almost identical to Juniper Glauca. The foliage is somewhat heavier and of a deep, rich green. It also bears blue and silver colored berries, which alone often sell the tree at sight.

It is really a companion tree to Juniper Glauca, Juniper Schotti and Juniper Elegants Lee and is very often planted in such groups. Among the upright green Junipers, we have found it the most popular, and the heavy demand makes it increasingly difficult to keep an adequate stock.

Juniper Counarti seems to fill a place all of its own among Evergreens. It creates a stateliness and certain rich atmosphere, and still it is a tree that can be kept within any bounds desired. It also makes one of the best Evergreens for planting in tubs.

Price, Extra Selected Specimens, Balled and Burlapped

		Each	10
2 to 3 feet xxx*	B&B†	\$10.00	\$ 87.50
3 to 4 feet xxx	B&B	13.00	110.00
5 to 6 feet xxxx	B&B	27.00	250.00

5 of same variety and size at 10 rate. *Each x indicates one transplanting.
†B&B signifies Balled and Burlapped.



An example of irregular border skirted with Juniper Sabina Prostrata with taller Evergreens in background.

Lee's Elegants Juniper

(*Juniperus Elegantissima* Lee)

Foliage Bright Golden Tipped

This is our best upright golden Juniper. The tips of the branches are a brilliant golden color while the inner branches are green. It keeps the golden coloring through all seasons.

Lee's Elegants Juniper belongs to the Red Cedar (*Juniperus Virginiana*) family and has the same general characteristics as Juniper Glauca, Juniper Counarti and Juniper Schotti. In landscape work it is usually combined with these varieties.

The growth is not large, height at maturity 8 to 10 feet. The habit is graceful, the branches being delicate and flexible. Foliage is fine and soft and can be trimmed if desired.

Price, Extra Selected Specimens,
Balled and Burlapped

	Each	10
2 to 3 feet xxx*.B&B†	\$12.50	\$115.00
3 to 4 feet xxx..B&B	13.50	125.00

Juniper Schotti

(*Juniperus Schotti*)

To the casual observer Juniperus Schotti looks almost like Juniperus Counarti. (See picture on page 14). The general habit is very similar. Foliage, however is not quite as heavy and the color is somewhat lighter green. It grows 15 to 20 feet at maturity, but can be trimmed and kept at any height desired.

Price, Extra Selected Specimens,
Balled and Burlapped

	Each	10
2 to 3 feet xxx*...B&B†	\$ 8.50	\$ 80.00
3 to 4 feet xxx....B&B	12.50	112.50

5 of same variety and size at 10 rate. *Each x indicates one transplanting.
†B&B signifies Balled and Burlapped.



Lee's Elegants Juniper, a Glimpse of Golden Beauty.

Juniperus Pyramidalis

Tall Spire Shaped Habit

This is a distinct pyramidal type, narrow and upright. Foliage deep green in contrast to purplish red of Red Cedar. Its spirelike shape makes it excellent for formal gardens and entrances. While not a well-known tree, this variety is in increasing demand.

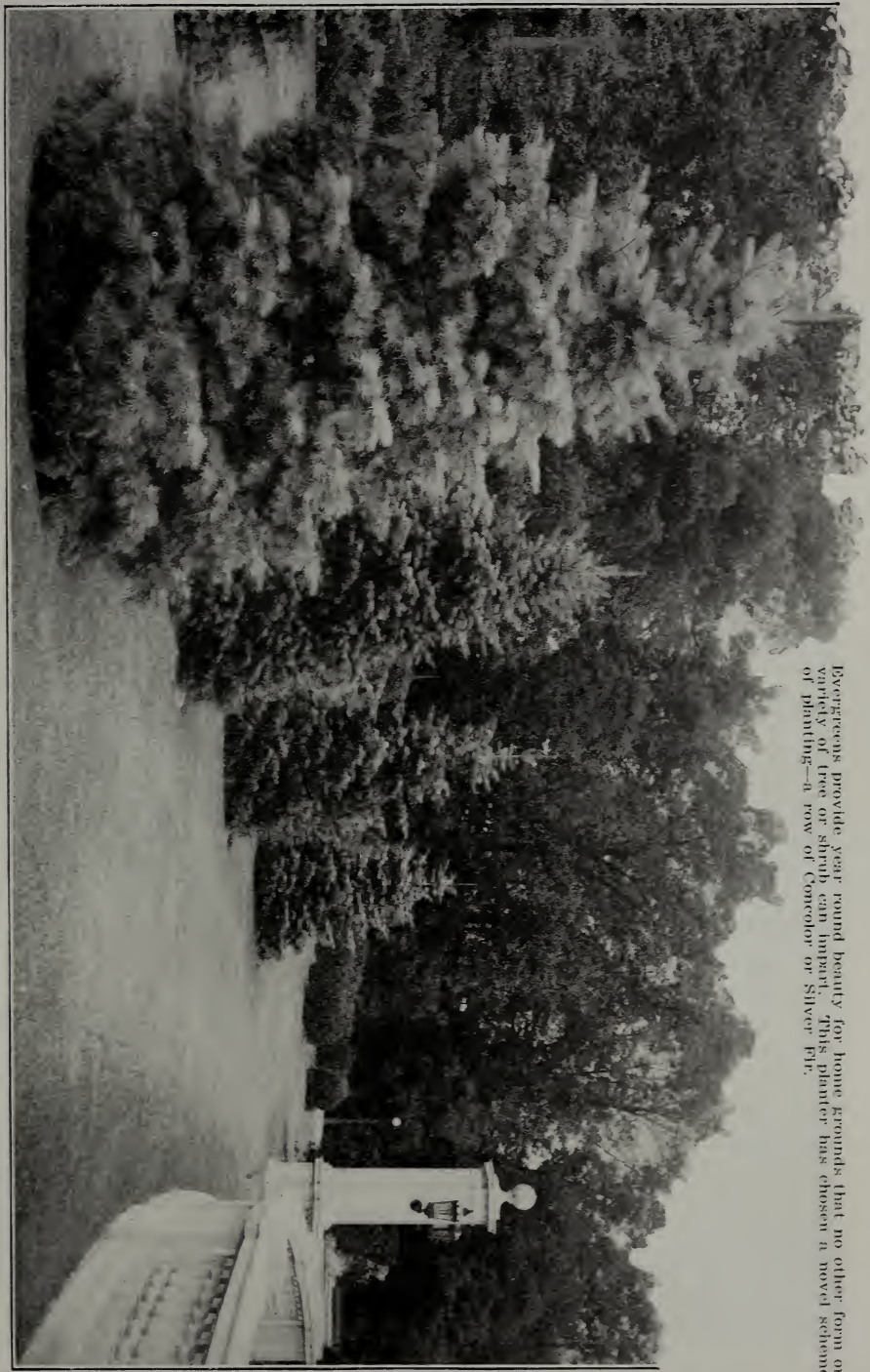
Price, Extra Selected Specimens,
Balled and Burlapped

	Each	10
2 to 3 feet xxx*...B&B†	\$11.00	\$100.00
3 to 4 feet xxx....B&B	13.50	125.00



Broad extensive grounds are always improved by such groups of Evergreens.

Evergreens provide year round beauty for home grounds that no other form or variety of tree or shrub can impart. This planter has chosen a novel scheme of planting—a row of Concolor or Silver Fir.



Juniperus Canadensis

(*Juniperus Communis*) (*J. Communis Depressa*)

Juniperus Canadensis is distinct from any other Evergreen in habit of growth, having no main stem, but with numerous short spreading branches, half prostrate, but not a creeper. Foliage is gray green, very dense. We also have the golden type similar except in color, which is bright gold. Excellent for ground cover, foundation plantings, borders and underplanting larger Evergreens. Grows three to six feet in diameter and never over two feet high.

Price, Extra Selected Specimens, Balled and Burlapped

			Each	10
Green type 1	to 1½ feet xxx*B&B†	\$ 6.50	\$ 60.00
Golden type 1	to 1½ feet xxxB&B	7.00	62.50
Golden type 1½	to 2 feet xxxB&B	8.00	75.00

Japanese Trailing Juniper

(*Juniperus Chinensis Procumbens*)

Japanese Trailing Juniper grows flat on the ground, and its long slender branches often reach ten or fifteen feet in every direction. It never grows over one or two feet high. The branches are covered with short sharp needles of a light grayish green color. The growth of foliage is very dense. In late autumn it is covered with small, shining purplish berries. For ground cover, terraces, etc., even under unfavorable conditions it is excellent.

Price, Extra Selected Specimens, Balled and Burlapped

			Each	10
1	to 1½ feet xxx*B&B†	\$ 8.50	\$ 75.00
1½	to 2 feet xxxB&B	10.50	100.00
2	to 2½ feet xxxB&B	17.00	162.50

5 of same variety and size at 10 rate. *Each x indicates one transplanting.
†B&B signifies Balled and Burlapped.



The soft spreading foliage of Juniper Canadensis reminds us of a bubbling fountain.



Imagine this home without Evergreens! Take them away and all the charm of its surroundings is gone.



Juniperus Canadensis is at home on sandy or gravelly hillsides where single plants often reach 15 feet or more in diameter.

Juniperus Sabina Tamariscifolia

One of the Best Creeping Junipers

A very vigorous grower forming a compact and perfect mat of bluish or gray green. The foliage is fine in texture. Grows very dense and never changes in color. Average height is one foot, with a spread of six to eight feet or more when full grown.

While the trees of this type are largely used for ground cover, rockeries, terraces, etc., they are also frequently planted singly, where they best emphasize the extremes of character in Evergreens. Other names including Gray Carpet Juniper and Tamarisk Leaved Juniper are also applied to it. This is one of the best low growing Junipers.

Price, Extra Selected Specimens, Balled and Burlapped

		Each	10
1 to 1½ feet (Spread) xxx*	B&B†	\$7.50	\$67.50
1½ to 2 feet (Spread) xxx	B&B	8.50	80.00
5 of same variety and size at 10 rate. *Each x indicates one transplanting.			
†B&B signifies Balled and Burlapped.			



Juniperus Tamariscifolia—Taxus Canadensis (American Yew) in background.

CREEPING OR SPREADING JUNIPERS

The list of prostrate Junipers is large and varied. We have selected the two types listed below, which seem to make the best trees under all conditions.

Prostrate Junipers create a carpet-like effect 6 to 8 inches high. They are appropriate for ground cover over rocky, sandy banks, in rock gardens, Japanese gardens, etc., or in situations where a low border is needed. In foundation plantings and in massing, prostrate Junipers are also used.

Juniperus Sabina Prostrata

Hill's Blue Type

This blue variety is one introduced by Hill's nursery and which appears to be one of the most attractive and best growers. We offer two sizes spreading up to 2½ feet. At maturity they spread over a wide area sometimes 15 to 25 feet.

Price, Extra Selected Specimens,
Balled and Burlapped

	Each	10
1½ to 2 ft. (Spread) xxx* B&B†	\$10.00	\$ 80.00
2 to 2½ ft. (Spread) xxx B&B	11.00	100.00

Juniperus Sabina Horizontalis

Coast of Maine Type

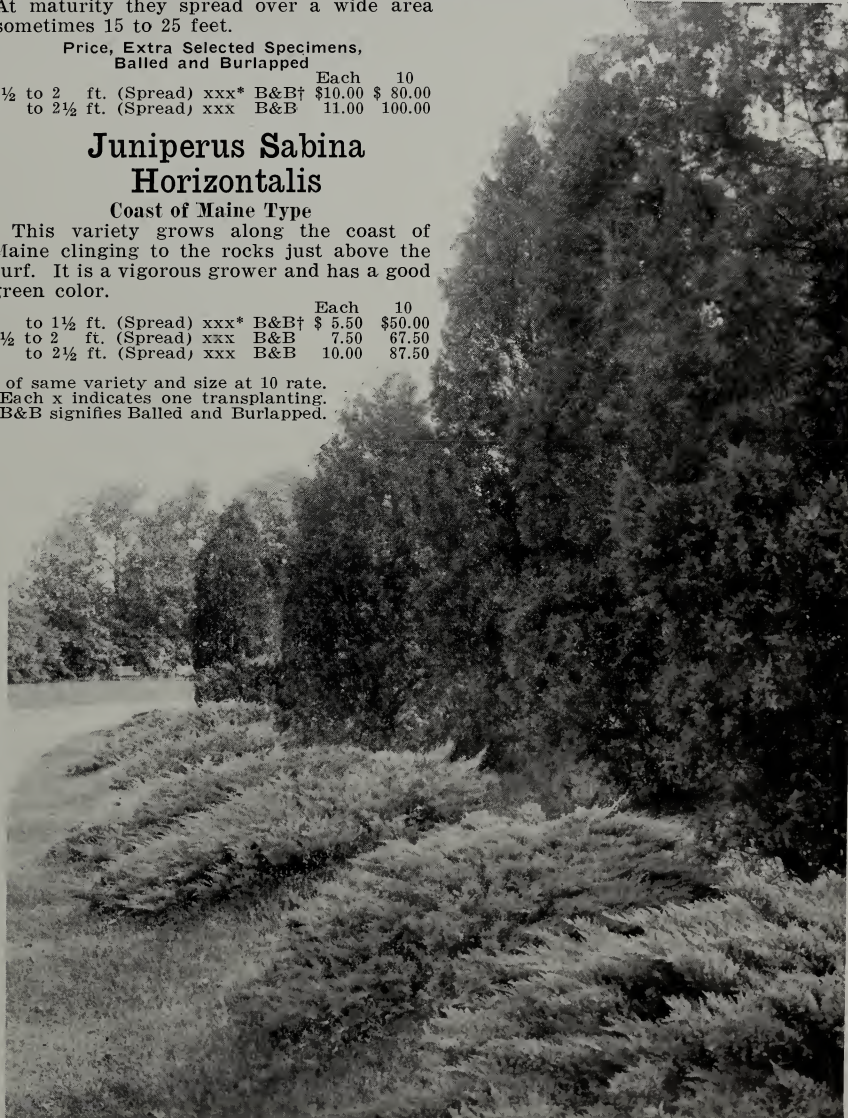
This variety grows along the coast of Maine clinging to the rocks just above the surf. It is a vigorous grower and has a good green color.

	Each	10
1 to 1½ ft. (Spread) xxx* B&B†	\$ 5.50	\$50.00
1½ to 2 ft. (Spread) xxx B&B	7.50	67.50
2 to 2½ ft. (Spread) xxx B&B	10.00	87.50

5 of same variety and size at 10 rate.

*Each x indicates one transplanting.

†B&B signifies Balled and Burlapped.



Juniperus Sabina Prostrata

HILL'S SILVER JUNIPER

(*Juniperus Scopolorum*)

A comparatively new introduction from the Rocky Mountains by D. Hill, which we have during the past few years thoroughly tested in various sections of the country and found entirely satisfactory. It is absolutely hardy in the North and also well adapted to Southern conditions. Many testimonials from leading firms and individuals confirm its worth. It is a beautiful, symmetrical, narrow pyramidal Juniper with the silvery blue color of the Blue Spruce. Secure a few of these trees now and learn more about the coming Silver Juniper.

Price, Extra Selected Specimens, Balled and Burlapped

		Each	10
1½ to 2 feet xxx*	B&B†	\$6.00	\$50.00
2 to 3 feet xxx	B&B	8.00	70.00

5 of same variety and size at 10 rate. *Each x indicates one transplanting.

†B&B signifies Balled and Burlapped.

A NEW
VARIETY



A pair of the new Hill's Silver Juniper growing in the Hill Nursery. It has the admiration of all who have seen it.



You can duplicate this planting with Dwarf Mountain Pine, Juniper Gaucha, Juniper Pfitzeriana, American Arbor Vitae and Woodward's Globe Arbor Vitae at a cost of only \$75 to \$100. Think of what this planting would mean around your home.



An unusual but fascinating treatment—*Juniperus Pfitzeriana* punctuated with *Pyramidal Arbor Vitae* (*Thuja Pyramidalis*).

Juniperus Pfitzeriana

A Fine, New, Hardy Juniper

This Juniper is sort of a connecting link between the upright and prostrate Junipers. The habit of growth is distinct from any other Evergreen. (See picture on opposite page). The spreading branches form a flat top and irregular outline. The habit of growth varies considerably according to the training they have received in the nursery. This variety has only recently been introduced into general cultivation and it is still a rare tree. We have an excellent stock, which we have spent several years in propagating, so we can supply some very choice specimens.

Price, Extra Selected Specimens, Balled and Burlapped

		Each	10
2 to 3 feet xxx*	B&B†	\$11.00	\$100.00
3 to 4 feet xxx	B&B	16.00	150.00

Savin Juniper (*Juniperus Sabina*)

Savin Juniper is a dwarf form with semi-upright branches, rarely attaining a height of over three feet and forming a flat crown, several feet in diameter. On account of its dwarf habit and fine color it is in great demand for foundation plantings, for borders and underplanting. *Juniperus Sabina* is particularly well suited for planting on rocky banks, etc. It has a growing habit resembling a shrub rather than an Evergreen.

Price, Extra Selected Specimens, Balled and Burlapped

		Each	10
1 to 1½ feet xxx*	B&B†	\$5.50	\$50.00
1½ to 2 feet xxx	B&B	7.50	67.50

Juniperus Virginialis Globosa

It is perfectly round, very dense in growth—its many short branchlets covered with soft foliage of light green, dark green and gold. Excellent for planting among perennials, in rock gardens, Japanese gardens and in situations requiring Evergreens that will remain small. The trees we offer were imported direct from Japan and have been growing in our nursery several years.

Price, Extra Selected Specimens, Balled and Burlapped

		Each	10
Green type 12 to 15 inch (Broad) xxx*	B&B†	\$ 9.50	\$87.50
Golden type 12 to 15 inch (Broad) xxx	B&B	10.00	92.50

5 of same variety and size at 10 rate. *Each x indicates one transplanting.
†B&B signifies Balled and Burlapped.



Savin Juniper (*Juniperus Sabina*)

American White Spruce

(*Picea Alba*)

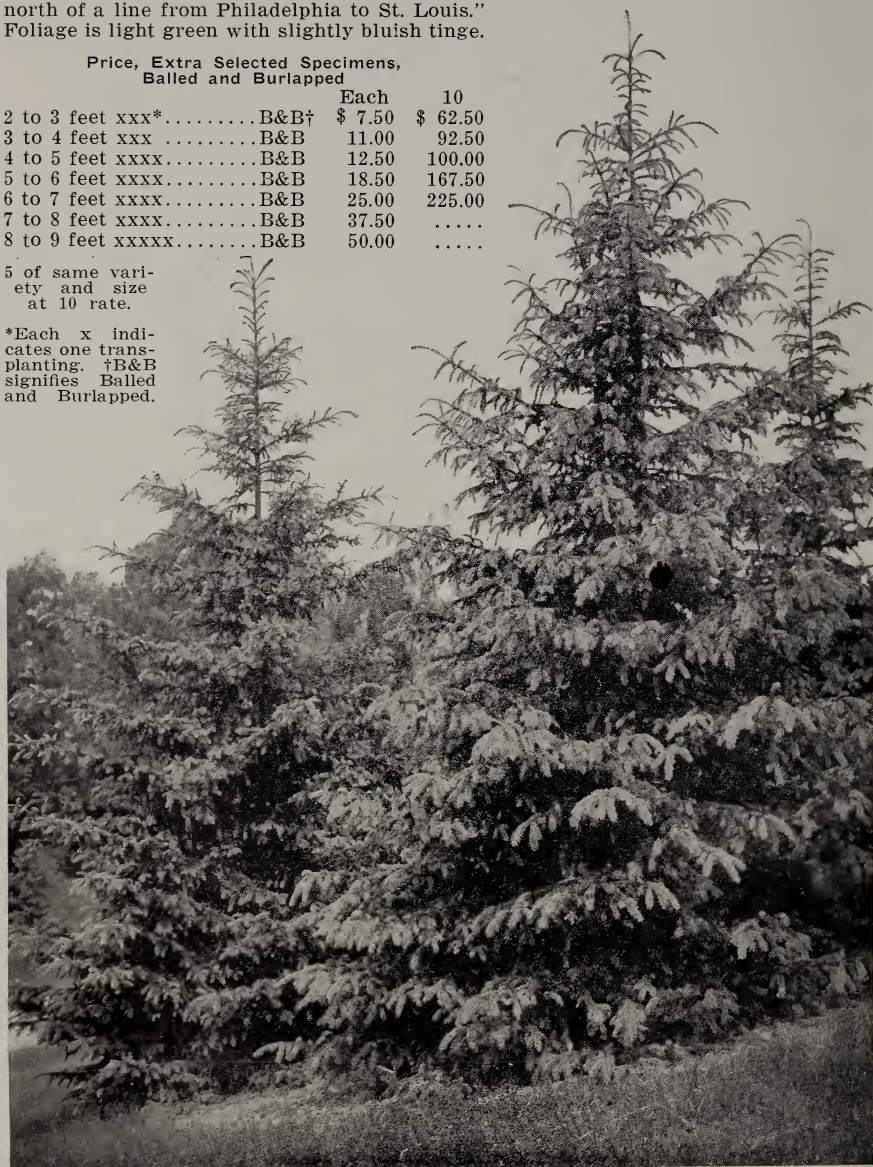
Described by Bailey, the eminent horticulturist, as: "A native of the northern parts of America and justly thought to be one of our best Evergreens. A compact and upright grower of great longevity. Trees over fifty years old remain well branched at bottom, retain their pyramidal form and annually make an upward growth. It will grow on a great variety of soils, bear crowding well and also stand severe trimming. A good tree for windbreaks and shelter-belts. Being a native of cold climates it grows most successfully when planted north of a line from Philadelphia to St. Louis." Foliage is light green with slightly bluish tinge.

Price, Extra Selected Specimens,
Balled and Burlapped

	Each	10
2 to 3 feet xxx*.....B&B†	\$ 7.50	\$ 62.50
3 to 4 feet xxxB&B	11.00	92.50
4 to 5 feet xxxx.....B&B	12.50	100.00
5 to 6 feet xxxx.....B&B	18.50	167.50
6 to 7 feet xxxx.....B&B	25.00	225.00
7 to 8 feet xxxx.....B&B	37.50
8 to 9 feet xxxxx.....B&B	50.00

5 of same variety and size at 10 rate.

*Each x indicates one transplanting. †B&B signifies Balled and Burlapped.



White Spruce (*Picea Alba*)

Colorado Blue Spruce

(*Picea Pungens Glauca*)

Glistening, Silvery Blue in Color

Other trees there are of almost every imaginable form and color, but here is truly the culmination of nature's highest effort to produce the beautiful. Picture in your mind a perfectly shaped tree with an abundance of heavy foliage of a rich glistening blue, which flashes and sparkles in the sunlight and you can form only a faint idea of the magnificent beauty of this truly marvelous tree.

The glory of the Blue Spruce is in its foliage, which is an intense steel-blue. It has created a sensation throughout the United States and Europe and is indeed a triumph in Evergreen growing.

Hill's Blue Spruce are selected specimens grown from seed collected from the very bluest of the native Colorado Blue Spruce. In this way is produced blue trees of the finest and brightest color possible.

Although we have specialized in this variety for a number of years and have grown it in large quantities, we have never had enough stock to fill the demand.



Colorado Blue Spruce (*Picea Pungens Glauca*)

Price, Extra Selected Specimens, Balled and Burlapped

		Each	10
2 to 3 feet XXX*B&B†	\$25.00	\$240.00
3 to 4 feet XXXB&B	37.50	360.00
4 to 5 feet XXXB&B	50.00

5 of same variety and size at 10 rate. *Each x indicates one transplanting.
†B&B signifies Balled and Burlapped.



Truly nature's highest effort to produce the beautiful is embodied in these glistening Blue Spruces.

Black Hill Spruce

(*Picea Canadensis*)

In describing to our patrons the different varieties of spruces, we wish to call particular attention to the Black Hill Spruce. The very smallest trees of this variety soon form round, sturdy, compact bodies. As the tree grows and develops it adds to this particular style of growth and in most cases is found to be the most compact growing Evergreen belonging to the Spruce family. It is native to the Black Hills of South Dakota. The color of its foliage varies—some trees are light green, some are dark, while still others have a dull blue color.

Mr. D. Hill, many years ago, recognized in the native Black Hill Spruce, a tree of unusual merit, and several trees were tried out here in our nursery. This experiment led to the propagation of Black Hill Spruce on a large scale and was largely responsible for its introduction and present popularity in landscape plantings.

Price, Extra Selected Specimens,
Balled and Burlapped

	Each	10
2 to 3 feet xxx*.....B&B†	\$ 9.50	\$ 87.50
3 to 4 feet xxx.....B&B	12.50	112.50
4 to 5 feet xxxx.....B&B	14.50	130.00
5 to 6 feet xxxx.....B&B	19.50	175.00
6 to 7 feet xxxx.....B&B	27.50	250.00
7 to 8 feet xxxx.....B&B	43.50
8 to 9 feet xxxxx.....B&B	62.50
9 to 10 feet xxxxx.....B&B	75.00

Hill's Norway Spruce

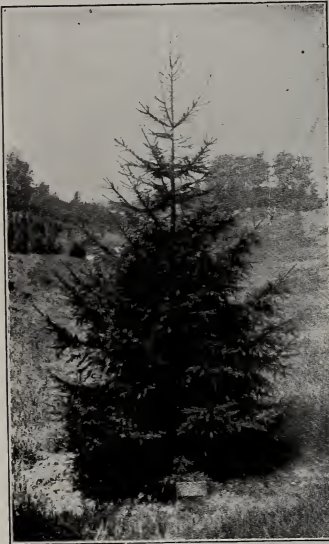
(*Picea Excelsa*)

This popular Evergreen is so well known that a description is hardly necessary. Probably 75% of all Evergreens planted in the country towns and around farm homes the last 50 years have been Norway Spruce, and many people have formed a liking for it through long association. It is a fast, vigorous grower that develops into a large tree.

Price, Extra Selected Specimens,
Balled and Burlapped

	Each	10
2 to 3 feet xxx*.....B&B†	\$ 5.00	\$ 42.50
3 to 4 feet xxx.....B&B	7.50	62.50
4 to 5 feet xxxx.....B&B	10.00	87.50
5 to 6 feet xxxxx.....B&B	13.50	118.50

5 of same variety and size at 10 rate. *Each x indicates one transplanting.
†B&B signifies Balled and Burlapped.



Norway Spruce the popular Evergreen of the old farm homes.



The stress of winter only adds to the beauty of the home surrounded by Evergreens.



Emblem of health and sturdiness—Black Hill Spruce (*Picea Canadensis*).



Austrian Pine (*Pinus Austriaca*)

Austrian Pine

(*Pinus Austriaca*)

Few Evergreens among the Pines form such a fine, broad, bushy tree as Austrian Pine. Its long heavy, stiff, spine-like needles, deep green in color easily distinguish it.

Where large, coarse needled Evergreens are wanted for background, masses, shelter belts, etc. Austrian Pine is one of the best. As shown in illustration opposite, it always makes a choice tree when planted alone. For planting in cities, in smoky locations and at the sea or lake shore it is exceptionally good.

Price, Extra Selected Specimens, Balled and Burlapped

		Each	10
2 to 3 feet XXX*B&B†	\$ 7.00	\$ 62.50
3 to 4 feet XXXB&B	10.00	87.50

Red Pine

(*Pinus Resinosa*)

Red or Norway Pine, although not much used in ornamental planting usually develops into a fine, round bodied tree. Needles are soft green in color, 4 to 6 inches long. Grows 40 to 50 feet, spreading 10 to 12 feet. On older trees, the bark is reddish brown, from which it derives its name.

Price, Extra Selected Specimens, Balled and Burlapped

		Each	10
2 to 3 feet XXX*B&B†	\$ 6.00	\$ 50.00
3 to 4 feet XXXB&B	7.50	62.50

Jack Pine

(*Pinus Banksiana*)

Jack Pine is principally known for its enduring constitution. There are other Pines such as Austrian and White Pine better suited to ornamental effects. Jack Pine makes the fastest growth of any Evergreen and will establish itself in dry sandy soil. If you have a barren hillside you wish to cover write us for prices on quantity lots.

Price, Extra Selected Specimens, Balled and Burlapped

		Each	10
2 to 3 feet XXX*B&B†	\$ 4.50	\$ 37.50
3 to 4 feet XXXB&B	6.25	50.00
4 to 5 feet XXXB&B	7.50	62.50

5 of same variety and size at 10 rate. *Each x indicates one transplanting.
†B&B signifies Balled and Burlapped.



An entrance made beautiful with Evergreens presents a warm and constant welcome.



Swiss Stone Pine (*Pinus Cembra*)

Swiss Stone Pine

(*Pinus Cembra*)

Swiss Stone Pine is a stocky, bushy tree with long, soft needles. The foliage has a good green color, bluish white beneath. It grows to a medium size and makes an almost perfect shaped tree. It is a native of central Europe and specimens are quite rare in this country. We have a limited stock this year in two sizes offered below.

Price, Extra Selected Specimens,
Balled and Burlapped

		Each	10
1	to 1½ feet xxx*.B&B†	\$6.25	\$55.00
1½	to 2 feet xxx..B&B	7.50	67.50

Ponderosa Pine

(*Pinus Ponderosa*)

Its most striking characteristic is the long glossy needles, about the size of a darning needle, often measuring six inches in length. This tree has the longest needles of any Evergreen grown in our nursery, and this characteristic attracts the attention of most everyone who sees it. It reaches 40 to 50 feet in height, spreading 12 to 15 feet at the base.

Price, Extra Selected Specimens,
Balled and Burlapped

		Each	10
2	to 3 feet xxx*...B&B†	\$6.00	\$50.00
3	to 4 feet xxx ...B&B	7.50	62.50

Flexilis Pine

(*Pinus Flexilis*)

A tree of medium size with stout horizontal branches, forming a narrow pyramid. The foliage is bluish white beneath. On older trees the bark is creamy white, corky and porous. Fine for rocky slopes.

Price, Extra Selected Specimens, Balled and Burlapped

		Each	10
2	to 3 feet xxx*.....B&B†	\$6.00	\$50.00
3	to 4 feet xxxB&B	8.00	67.50
5 of same variety and size at 10 rate. *Each x indicates one transplanting.			
†B&B signifies Balled and Burlapped.			



Limited space is no bar to the possibilities of Evergreens, even a city lot offers opportunities for beautiful surroundings.

In all weather here stand two constant sentinels with a cheery welcome to all who enter.





On corners and curves along drives, where a view of approaching vehicles is essential, such a group of low growing Dwarf Mountain Pine is well chosen.



Dwarf Mountain Pine. A grand Dwarf Variety from Switzerland.

Dwarf Mountain Pine

(*Pinus Mugho*)

Dwarf Mountain Pine is our best, low growing Pine. It does not have a single or main trunk, but is composed of many short stems, which grow outward, then slightly upward spreading twice as broad as it grows tall.

The new growth, when first appearing in the Spring, closely resembles tiny candle sticks. The tree illustrated above shows this interesting characteristic.

The Dwarf Mountain Pine was originally discovered in the Alps of Switzerland, high up on the mountain peaks, where practically no other vegetation was found. Seed is hard to obtain, but we have made a special effort to keep a good stock of choice trees.

There are various types of trees sold as Dwarf Mountain Pine, many of which grow more or less open and upright. All of our trees are the true compact type.

Price, Extra Selected Specimens, Balled and Burlapped

1	to 1½ feet xxx*B&B†	Each	10
				\$5.00
1½	to 2 feet xxxB&B		\$40.00
				5.50
	5 of same variety and size at 10 rate.	*Each x indicates one transplanting.		
		†B&B signifies Balled and Burlapped.		



All Hill Specimen Evergreens are hand dug, leaving a solid ball of our rich, prairie loam about the roots. Evergreens handled in this manner scarcely know they have been moved.



White Pine (*Pinus Strobus*) Each tier of branches is one year's growth.

White Pine

(*Pinus Strobus*)

King of the Forest

White Pine is by far the best known and has been more generally planted than any of our other Pines. The tufts of whitish, green needles in clusters of five, makes it stand out among other trees. In the native forests White Pine rises head and shoulders over varieties around it.

When it is desired to reproduce natural wooded effects and extensive shelter belts, screens, etc., White Pine is often used.

It grows rapidly, each season's growth is plainly noticeable, as shown in this picture.

Price, Extra Selected Specimens, Balled and Burlapped

	Each	10
2 to 3 feet xxx* . .B&B†	\$ 4.50	\$ 37.50
3 to 4 feet xxx . .B&B	6.25	50.00
4 to 5 feet xxx . .B&B	7.50	62.50
5 to 6 feet xxx . .B&B	11.50	92.50
6 to 7 feet xxx . .B&B	16.50	137.50
7 to 8 feet xxx . .B&B	19.50	162.50
8 to 9 feet xxx . .B&B	23.50	200.00

Scotch Pine

(*Pinus Sylvestris*)

Scotch Pine in old age develops a most picturesque outline, often taking very irregular shapes. Younger trees are well formed, and make one of the best ornamental Pines.

The needles are long and heavy—a good green color. Grows to a large size and does well everywhere.

Price, Extra Selected Specimens, Balled and Burlapped

	Each	10
2 to 3 feet xxx* B&B†	\$5.00	\$43.50
3 to 4 feet xxx B&B	7.00	56.50
4 to 5 feet xxx B&B	8.00	68.50

Japanese Table Pine

(*Pinus Tanyosha Globosa*)

This rare Pine comes from Japan. It gets its name from its habit of growth, which is perfectly flat on top. The tree is a dwarf, low and round, forming a table top.

Price, Extra Selected Specimens, Balled and Burlapped

Feet	Each	10
1½ to 2 xxx* B&B†	\$13.50	\$125.00

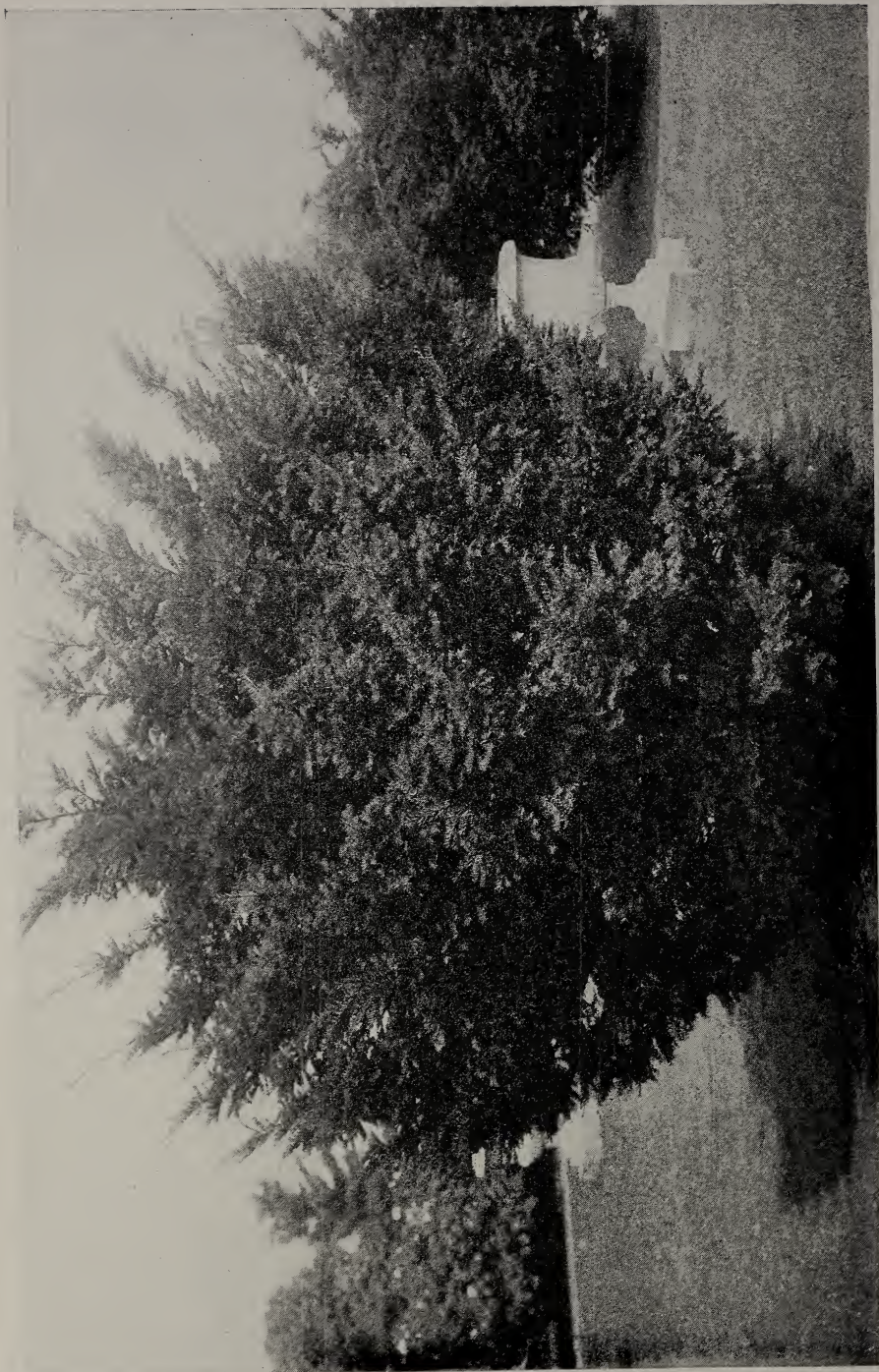
5 of same variety and size at 10 rate.
*Each x indicates one transplanting.
†B&B signifies Balled and Burlapped.



Scotch Pine (*Pinus Sylvestris*) A fast upright grower with strong, heavy branches.

A unique mass planting, good to look upon from the outside, and guarding the privacy of the garden within.





A magnificent specimen of Japanese Yew (*Taxus Cuspidata*)

The Yews

In the old world the Yew tree is a tradition. Its history is interwoven with the growth of civilization, and it is often regarded as a symbol of immortality. The Fortinghall Yew in England, 57 feet in circumference, proved by the rings of its stump that it had lived almost 3000 years. Not all varieties of Yew will stand the rigour of our climate, but the three selected types described on this page are among the best for American gardens.

American Yew

Note: There is a typographical error on the first line of the description under **American Yew**. The first line should read as follows:

The American Yew is a dwarf bushy shaped tree as shown in picture of matured

1 to 1½ feet xxx*.....B&B† \$7.00 \$62.50

Japanese Yew

(*Taxus Cuspidata*)

The Japanese Yew is naturally a pyramidal upright grower reaching 15 to 20 feet in height. In cultivation it sometimes grows with many stems, as the tree shown in picture opposite this page. The foliage is a deep, shining green. Tiny scarlet colored berries hang on the trees nearly all winter. Adapted for rock gardens, Japanese gardens, low growing Evergreen beds and borders. On account of its hardiness, this Yew is destined to occupy the place in this country that the English Yew does in England.

Price, Extra Selected Specimens, Balled and Burlapped

		Each	10
1 to 1½ feet xxx*B&B†	\$7.00	\$62.50
1½ to 2 feet xxxB&B	7.50	67.50

Dwarf Japanese Yew

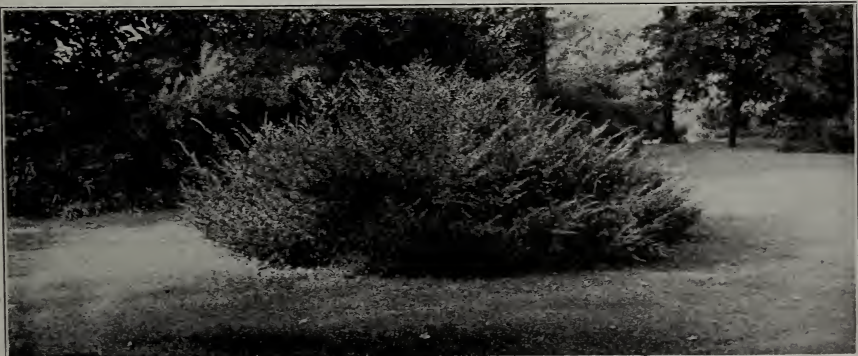
(*Taxus Cuspidata Brevifolia*)

Few Japanese Evergreens better reflect the atmosphere of their native land, than this little Yew. It grows only three or four feet high and spreads irregularly. The deep, dark green foliage has a heavy, velvety appearance. Can be trimmed into a round dome or allowed to grow in the picturesque Japanese style. It is one of the best for foundation plantings. Trees next to the house are subject to the closest scrutiny. They should be of fine texture, dark and rich in foliage, and not grow too large. The Dwarf Japanese Yew exactly fills this need **permanently**.

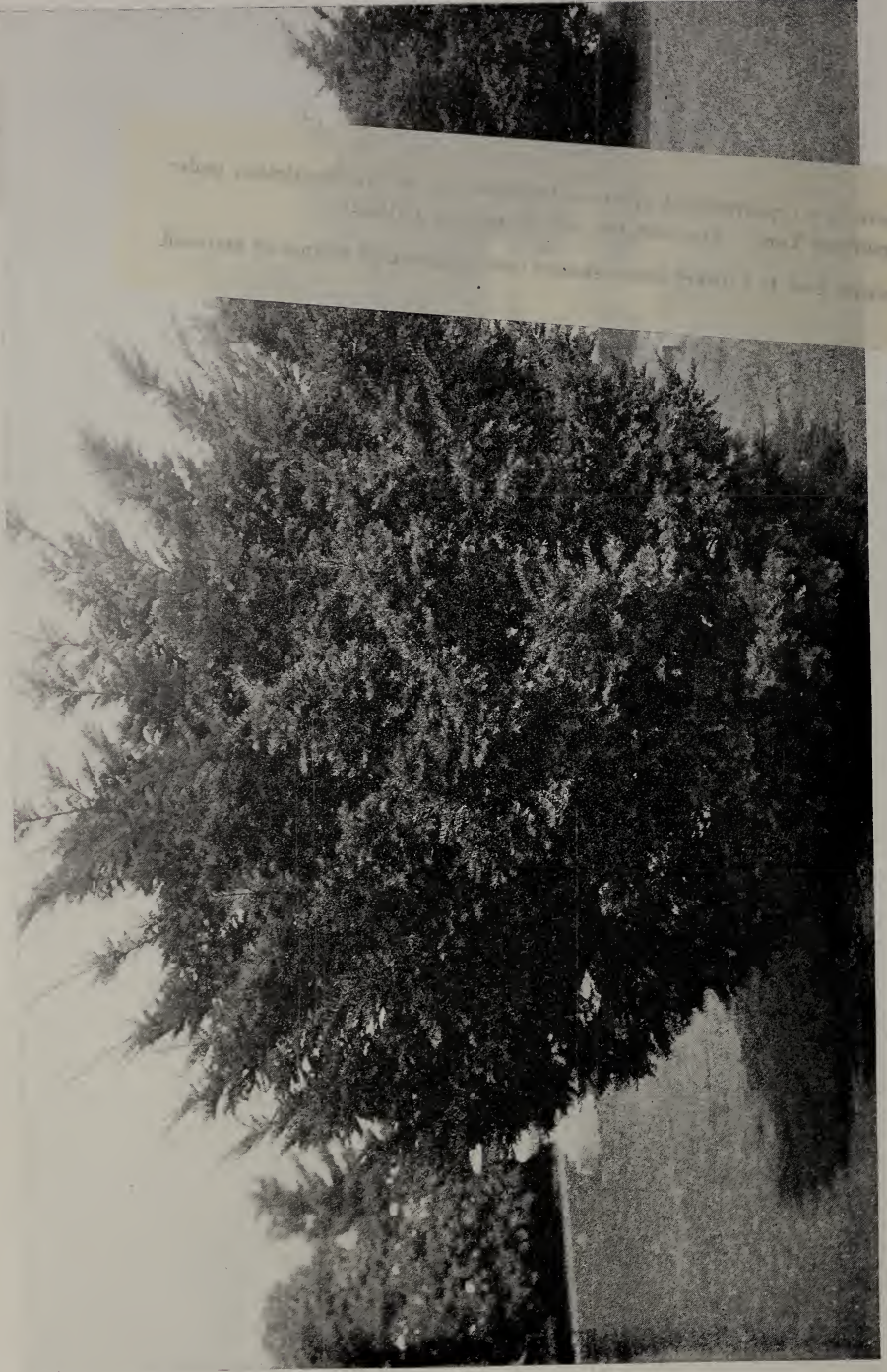
Price, Extra Selected Specimens, Balled and Burlapped

		Each	10
1 to 1½ feet xxx*B&B†	\$ 8.00	\$ 75.00
1½ to 2 feet xxxB&B	10.50	100.00

5 of same variety and size at 10 rate. *Each x indicates one transplanting.
†B&B signifies Balled and Burlapped.



American Yew (*Taxus Canadensis*)—Don't forget the Yew for a shady corner—it will do well there.



A magnificent specimen of Japanese Yew (*Taxus Cuspidata*)

The Yews

In the old world the Yew tree is a tradition. Its history is interwoven with the growth of civilization, and it is often regarded as a symbol of immortality. The Fortinghall Yew in England, 57 feet in circumference, proved by the rings of its stump that it had lived almost 3000 years. Not all varieties of Yew will stand the rigour of our climate, but the three selected types described on this page are among the best for American gardens.

American Yew

(*Taxus Canadensis*)

The Japanese Yew is naturally a pyramidal upright grower reaching 15 to 20 feet tree below. The foliage is a deep, dark verdant green, changing to a bronze color in winter. Its certain richness and stiff formality of growth, gives it a distinction apart from any other Evergreen. It rarely grows over five or six feet tall and about twice as broad, almost fan shaped. In late summer and fall bright red berries of waxy, almost artificial appearance, cover the tree. Excellent for shady locations.

Price, Extra Selected Specimens, Balled and Burlapped

	Each	10
1 to 1½ feet xxx*.....B&B†	\$7.00	\$62.50

Japanese Yew

(*Taxus Cuspidata*)

The Japanese Yew is naturally a pyramidal upright grower reaching 15 to 20 feet in height. In cultivation it sometimes grows with many stems, as the tree shown in picture opposite this page. The foliage is a deep, shining green. Tiny scarlet colored berries hang on the trees nearly all winter. Adapted for rock gardens, Japanese gardens, low growing Evergreen beds and borders. On account of its hardness, this Yew is destined to occupy the place in this country that the English Yew does in England.

Price, Extra Selected Specimens, Balled and Burlapped

	Each	10
1 to 1½ feet xxx*.....B&B†	\$7.00	\$62.50
1½ to 2 feet xxx.....B&B	7.50	67.50

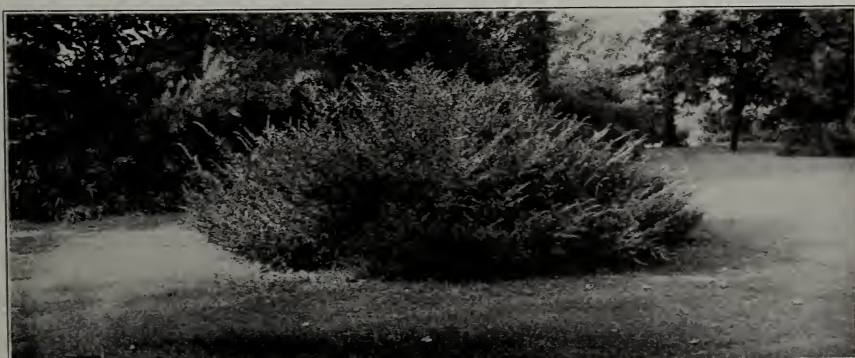
Dwarf Japanese Yew

(*Taxus Cuspidata Brevifolia*)

Few Japanese Evergreens better reflect the atmosphere of their native land, than this little Yew. It grows only three or four feet high and spreads irregularly. The deep, dark green foliage has a heavy, velvety appearance. Can be trimmed into a round dome or allowed to grow in the picturesque Japanese style. It is one of the best for foundation plantings. Trees next to the house are subject to the closest scrutiny. They should be of fine texture, dark and rich in foliage, and not grow too large. The Dwarf Japanese Yew exactly fills this need permanently.

Price, Extra Selected Specimens, Balled and Burlapped

	Each	10
1 to 1½ feet xxx*.....B&B†	\$ 8.00	\$ 75.00
1½ to 2 feet xxx.....B&B	10.50	100.00
5 of same variety and size at 10 rate. *Each x indicates one transplanting.		
†B&B signifies Balled and Burlapped.		



American Yew (*Taxus Canadensis*)—Don't forget the Yew for a shady corner—it will do well there.



A little colony of American Arbor Vitae nestled among the Pines and Spruces.



American Arbor Vitae

(*Thuja Occidentalis*)

There is probably no other Evergreen in the entire Evergreen family, that can be used in so many different ways as the American Arbor Vitae. Illustrations on pages 40 and 41 also hedge on page 55 suggests the various forms it takes. Special information about hedges on page 54. Our trees are full round specimens that have been sheared each season. Arbor Vitae will do well in cool moist soil, also in partial shade as well as in the open.

Price, Extra Selected Specimens, Balled and Burlapped

	Each	10	Sheared Globe Shape	
2 to 3 feet xxx*...B&B†	\$ 5.00	\$ 42.50		
3 to 4 feet xxx ...B&B	7.00	55.00		
4 to 5 feet xxx ...B&B	13.00	125.00	1 by 1 foot xxx*...B&B†	Each 10 \$6.25 \$55.00
5 to 6 feet xxxx...B&B	22.00	200.00	15 by 15 inch xxx ..B&B	7.50 62.50
6 to 7 feet xxxxx..B&B	27.50	250.00	18 by 18 inch xxx ..B&B	8.50 75.00
7 to 8 feet xxxxx..B&B	33.50	300.00		

5 of same variety and size at 10 rate. *Each x indicates one transplanting.
†B&B signifies Balled and Burlapped.

Peabody's Golden Arbor Vitae

(*Thuja Occidentalis Lutea*)

A very distinct golden type. The bright golden color does not change with the seasons, but always remains the same. It is rather slender in habit and grows 10 to 12 feet in height. Plant Peabody's Golden among darker colored plants and it will add life and brightness to its entire surroundings. Such an abundance of golden color is seldom borne upon a single tree.

Price, Extra Selected Specimens, Balled and Burlapped

			Each	10	
1	to 1½	feet xxx*	B&B†	\$5.00	\$42.50
1½	to 2	feet xxx	B&B	5.50	50.00
2	to 3	feet xxx	B&B	7.00	62.50

Siberian Arbor Vitae

(*Thuja Wareana Siberica*)

Matures at 6 to 8 feet in height. Conical in outline and covered with dark green foliage. It was originated in the famous royal gardens of England, but named Siberian because of its rugged constitution. The foliage is somewhat different from American Arbor Vitae being much heavier and thicker. The branches are short and stiff. It is much used for foundation planting and frequently for hedges.

Price, Extra Selected Specimens, Balled and Burlapped

			Each	10	
1½	to 2	feet xxx*	B&B†	\$ 7.50	\$ 62.50
2	to 3	feet xxx	B&B	8.50	75.00
3	to 4	feet xxx	B&B	11.00	100.00

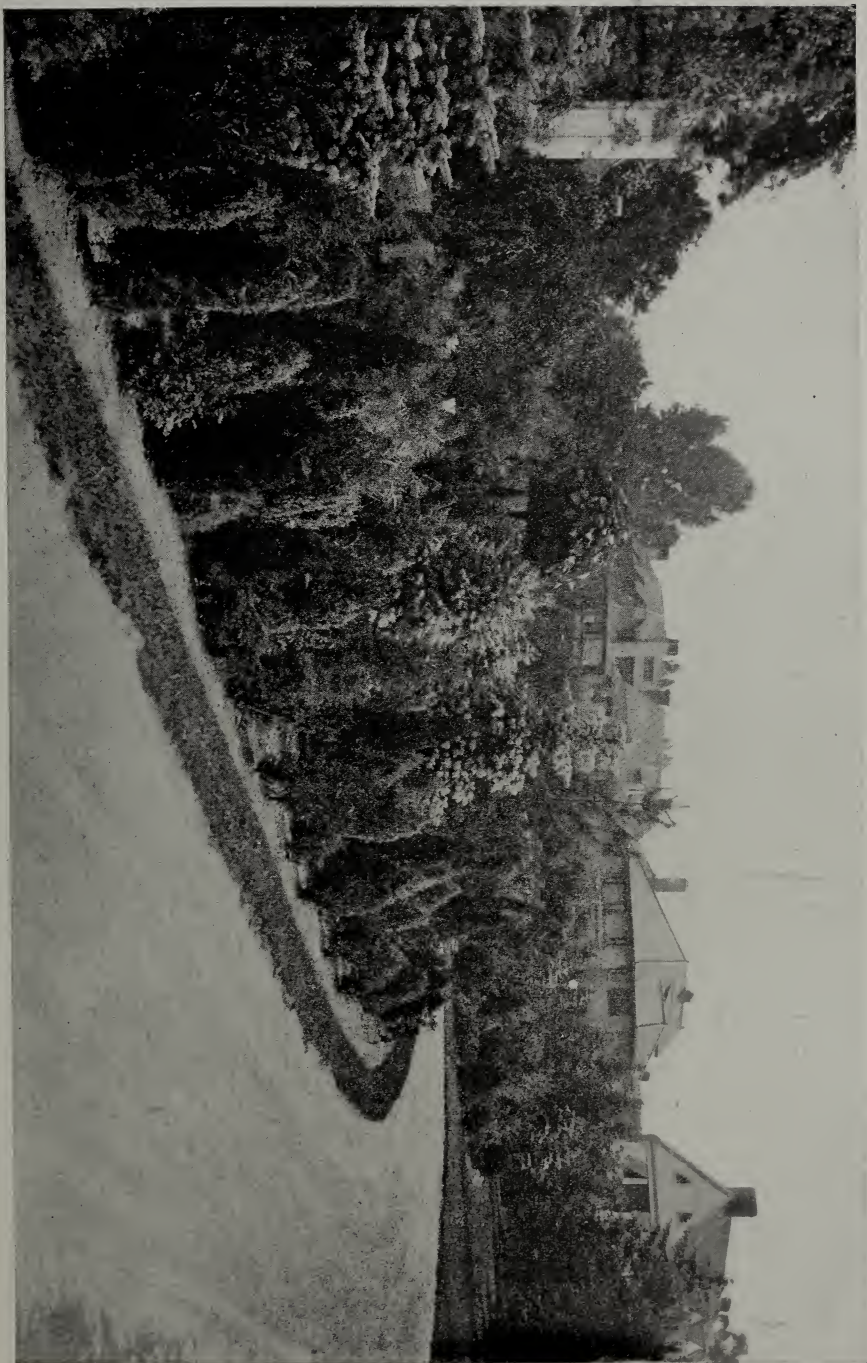
5 of same variety and size at 10 rate. *Each x indicates one transplanting.

†B&B signifies Balled and Burlapped.



Siberian Arbor Vitae (*Thuja Wareana Siberica*)

A miscellaneous mass planting—interesting because of the large variety—partially screening the side entrance.





Pyramidal Arbor Vitae (*Thuja Pyramidalis*)

Pyramidal Arbor Vitae

(*Thuja Pyramidalis*)

Very Formal Habit

Whether you behold the erect sentinel-like trees of mature years, or see the rows of neat, even specimens in the nursery blocks, your admiration is the same.

To a great many people the Pyramidal Arbor Vitae has a sentimental attachment. It is a common occurrence at the nursery for visitors to point out this tree as their first recollection of an Evergreen, due, no doubt, to the large sale of Pyramidal Arbor Vitae in all parts of the country for many years.

There is almost no end to its use in landscaping. For markers, entrances, formal gardens and tubing, it probably is used more than any other Evergreen. It is also used in thick mass groups to break the monotony of a continuous sky line.

The growth is very upright and narrow, trees spreading not over 2 feet at the base. Matured trees seldom grow over 15 feet high.

Its characteristic flat, open-spray foliage grows thick on the branches and keeps its rich, green color in the coldest winter.

Price, Extra Selected Specimens, Balled and Burlapped

		Each	10
2 to 3 feet XXX*	B&B†	\$6.00	\$50.00
3 to 4 feet XXX	B&B	7.50	62.50

5 of same variety and size at 10 rate. *Each x indicates one transplanting.
†B&B signifies Balled and Burlapped.



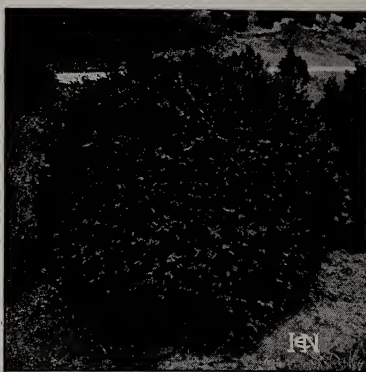
Low growing Evergreens have been extended along each side of a curved entrance path. A departure from the usual style of entrance planting, but certainly a harmonious arrangement.

Woodward's Globe Arbor Vitae (*Thuja Woodwardi*)

Its shape is round or globular, very dense in growth, and it does not require shearing to maintain its ball form. It seldom grows over 3 to 3½ feet in diameter. The foliage is similar to the other Arbor Vitae, being soft and flat. Woodward's Globe Arbor Vitae fills the need of a small ball shaped Evergreen for tubing, foundation planting and for small areas, where larger trees would be out of place. In formal gardens these little Evergreens are always in harmony with their surroundings.

Price, Extra Selected Specimens,
Balled and Burlapped

	Each	10
1 by 1 foot xxx*.....B&B†	\$6.25	\$56.50
15 by 15 inch xxxB&B	7.50	68.50



Woodwards Globe Arbor Vitae, a perfect ball of green.

Douglas Golden Arbor Vitae

(*Thuja Douglassi Aurea*)

A Distinct Golden Green

The flat, open spray leaves in summer are golden tipped and change to yellowish brown color in early winter. It is rather broad, spreading three or four feet at the base and reaching a height of 15 to 18 feet. Its unusual bright golden color adds contrast and a novel touch when planted with other Evergreens. Can be easily sheared and kept at any height or form desired.

Price, Extra Selected Specimens,
Balled and Burlapped

	Each	10
1½ to 2 feet xxx* B&B†	\$5.50	\$50.00
2 to 3 feet xxx B&B	7.50	68.50

Douglas Pyramidal Arbor Vitae

(*Thuja Douglassi Pyramidalis*)

Its foliage is feathery, somewhat crested and of a good dark green color. Its habit is pyramidal resembling the well known Pyramidal Arbor Vitae. It grows 12 to 15 feet in height. This illustration shows the unusual formation of foliage and the symmetrical outline. A comparatively new variety.

Price, Extra Selected Specimens,
Balled and Burlapped

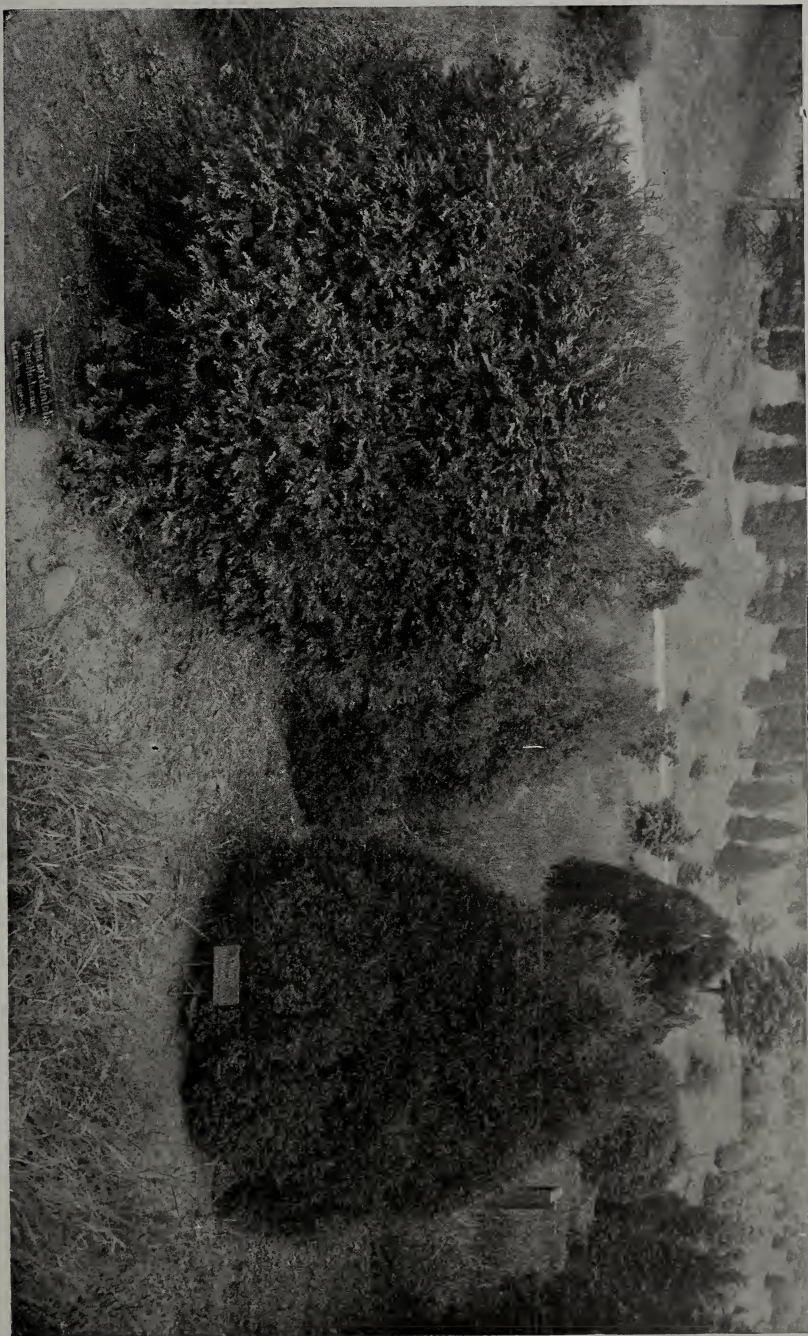
	Each	10
1½ to 2 feet xxx* B&B†	\$6.25	\$56.50
2 to 3 feet xxx B&B	7.50	68.50

5 of same variety and size at 10 rate.
*Each x indicates one transplanting.
†B&B signifies Balled and Burlapped.



Douglas Pyramidal Arbor Vitae (*Thuja Douglassi Pyramidalis*)

Assorted varieties of Arbor Vitae. This family varies from the tall, narrow pyramids to the little balled shape trees pictured here.



Hill's Dwarf Evergreens

New, Rare and Choice Varieties of Dwarf Evergreens Suitable for Japanese Gardens, Tea Gardens, Rock Gardens, Foundation Plantings, Terraces, Etc.

		Price, Extra Selected Specimens, Balled and Burlapped	
Variety		Each	10
Juniperus Canadensis Aurea (J. Communis Aurea) (J. C. Depressa Aurea)			
1-1½ feet xxx Heavy Specimens—Solid Balls—B&B	Broad Heavy Plants	\$7.00	\$ 62.50
1½-2 " " " " " " " "	" " " " " " " "	8.00	75.00
Juniperus Chinensis Pfitzeriana			
2-3 feet (Spread) xxx Heavy Specimens—Solid Balls—B&B	11.00	100.00
3-4 " " " " " " " "	16.00	150.00
Juniperus Chinensis Procumbens			
1-1½ feet xxx Heavy Specimens—Solid Balls—B&B	8.50	75.00
1½-2 " " " " " " " "	10.50	100.00
2-2½ " " " " " " " "	17.00	162.50
Juniperus Sabina Horizontalis			
1-1½ feet (Spread) xxx Heavy Specimens—Solid Balls—B&B	5.50	50.00
1½-2 " " " " " " " "	7.50	67.50
2-2½ " " " " " " " "	10.00	87.50
Juniperus Sabina Prostrata (Hill's Blue Type)			
1½-2 feet (Spread) xxx Heavy Specimens—Solid Balls—B&B	10.00	80.00
2-2½ " " " " " " " "	11.00	100.00
Juniperus Sabina Tamariscifolia			
1½-2 feet (Spread) xxx Heavy Specimens—Solid Balls—B&B	10.00	80.00
Juniperus Virginialis Globosa (Light Green)			
12-15 inch xxx Heavy Specimens—Solid Balls—B&B	9.50	87.50
Juniperus Virginialis Globosa Aurea Golden			
12-15 inch xxx Heavy Specimens—Solid Balls—B&B	10.00	92.50
Pinus Mugho (Dwarf Mountain Pine)			
1-1½ feet xxx Heavy Specimens—Solid Balls—B&B	5.00	40.00
1½-2 " " " " " " " "	5.50	50.00
Pinus Tanyosha (Table Pine)			
1½-2 feet xxx Heavy Specimens—Solid Balls—B&B	13.50	125.00
Taxus Canadensis (American Yew)			
1-1½ feet xxx Heavy Specimens—Solid Balls—B&B	7.00	62.50
Taxus Cuspidata Brevifolia (Dwarf Japanese Yew)			
1-1½ feet xxx Heavy Specimens—Solid Balls—B&B	8.00	75.00
1½-2 " " " " " " " "	10.50	100.00
Thuja Occidentalis Woodwardi (Woodward's Globe Arbor Vitae)			
1x1 foot xxx Heavy Specimens—Solid Balls—B&B	6.25	55.00
15x15 inch xxx " " " " " " " "	7.50	67.50

5 of same variety and size at 10 rate. *Each x indicates one transplanting.
 †B&B signifies Balled and Burlapped.



Although each tree in this arrangement seems to stand out alone, notice how harmoniously they blend into one picture.



The windows here were low, naturally low growing Evergreens were used. A dozen Woodwards Globe Arbor Vine forms the outer row.

Select Your Evergreens From This Page

For the convenience of those not so familiar with Evergreens in their different habits, we have divided the important varieties into groups—Very Dwarf, Dwarf, Medium and Tall.

TRAILING, CREEPING, OR VERY DWARF

Fine for Rockeries, Borders, Edging or Ground Covers. All Prostrate or Creeping Forms, 1 to 2 feet high at maturity, spread 8 to 15 feet in diameter.

	Page		Page
Juniperus Canadensis	18	Juniperus Sabina Prostrata	21
Juniperus Canadensis Aurea	18	Juniperus Virginiana Globosa	25
Juniperus Procumbens	18	Taxus Cuspidata Brevifolia	39
Juniperus Tamariscifolia	20		

DWARF OR LOW GROWING VARIETIES

Excellent for Foundation Plantings, Low Groups, Terraces, and Conifer Beds. Splendid where permanent effects are wanted without obstructing the view. Average height, 4 to 6 feet at maturity.

	Page		Page
Juniperus Pfitzeriana	25	Thuja Occidentalis (Globes)	41
Juniperus Sabina	25	Thuja Douglassi Aurea	46
Pinus Tanyosha	36	Thuja Lutea	42
Taxus Canadensis	39	Thuja Wareana Siberica	42
Pinus Mugho	35	Thuja Woodwardi	46

MEDIUM HEIGHT VARIETIES

Excellent for borders to add contrast to flowering shrubs. Fine for corners to give accent and add height to plantings of creeping or low growing Evergreens. Good for sentinels or markers at each side of entrance steps, windows, or in garden. Average height, 8 to 15 feet at maturity.

	Page		Page
Abies Balsamea	11	Juniperus Schottii	16
Abies Tsuga Canadensis	7	Juniperus Scopulorum	22
Juniperus Virginiana	13	Pinus Cembra	32
Juniperus Counarti	15	Pinus Flexilis	32
Juniperus Elegants Lee	16	Taxus Cuspidata	39
Juniperus Glauca	15	Thuja Occidentalis	41
Juniperus Virginiana Pyramidalis... 16		Thuja Douglassi Pyramidalis	46

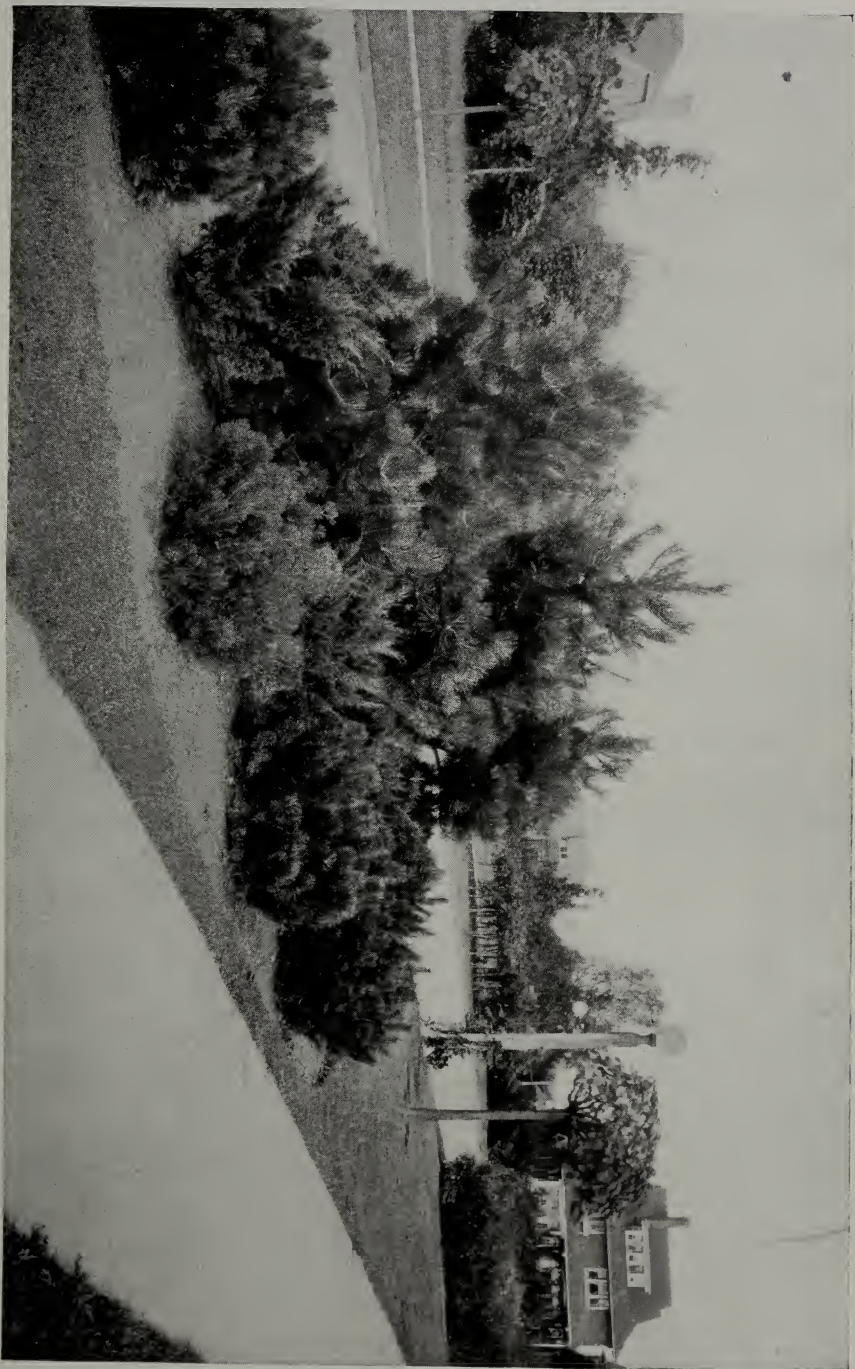
TALL GROWING VARIETIES

For planting in Masses, Heavy Screens, Windbreaks, or High Hedges; Small Groups to frame a vista; Single Specimens where an imposing specimen is wanted to carry out some special effect. Average height 30 to 60 feet at maturity.

	Page		Page
Abies Concolor	11	Pinus Austriaca	31
Abies Douglassi	8	Pinus Ponderosa	32
Picea Alba	26	Pinus Resinosa	31
Picea Canadensis	28	Pinus Strobus	36
Picea Excelsa	28	Pinus Sylvestris	36
Picea Pungens	27	Thuja Pyramidalis	45



The owner of the bed of Evergreens shown here used to spend half the price of the Evergreens each year in bedding plants and perennials—now he avoids replacing and expensive upkeep and enjoys the year around beauty of Evergreens.



Here is a suggestion that can well be copied for parkway plantings. Austrian Pine surrounded by Dwarf Mountain Pine and Savin Junipers were used in this instance.

EVERGREEN WINDBREAKS

The comforting influence of an Evergreen windbreak can scarcely be realized unless you have stepped behind a row of sturdy Evergreens on a blustering winter's day. In farming sections especially in the prairie states, the Evergreen windbreak has long been recognized as an important factor in protecting the home, stock and buildings. We have a special catalog with many suggestions and illustrations in regard to Evergreen windbreaks. Should you be unable to reach a decision in regard to your windbreak needs from information contained here, we will gladly send you a copy of our special windbreak catalog on request.

If you are interested in farm property you will find an Evergreen windbreak a wonderful investment. We have in our files letters from farm owners all over the country testifying they have received one to five thousand dollars more for their farms when planted with the Hill Evergreen Windbreaks.

Any farm or home exposed to winds will find Evergreen windbreaks a remarkable source of comfort.

How to Build Evergreen Windbreaks

There are three best ways to build an Evergreen Windbreak. The same results are accomplished with each method; the only difference is in the time it takes. You will not be disappointed in any of these planting arrangements. Just look over the plans submitted and choose the plan best suited to your needs.

Plan No. 1, (Plant 10 feet apart), Results in Only Six Years' Time

A popular and economical plan is to space the trees 10 feet apart in a single row, which gives a windbreak in six years' time. This spacing gives the correct amount of room for the trees to develop. At the end of six years the branches will touch, and no thinning will ever be required. On this basis figure 100 trees to each 1000 feet.

Plan No. 2, (Plant 5 feet apart), Results in Only Four Years' Time

If you desire quicker results, space the trees 5 feet apart in a single row. At the end of five years take out every other tree and plant elsewhere. After this no further thinning will be required. On this basis 100 trees will plant 500 feet.

Plan No. 3, (Plant 2½ feet apart), Results in Two Years' Time

Where almost immediate results are wanted, space the trees in a single row, 2½ feet apart. This gives a Windbreak in the shortest possible space of time. At the end of three years take out every other tree, leaving trees 5 feet apart. After four years more, thin trees to 10 feet apart. After this no further thinning will be required. On this basis figure 100 trees to each 250 feet.



Here we have the combined beauty of an Evergreen windbreak and protecting influence from cold winter winds.



The Farm Home Before It Was Given the Protection of a Hill's Evergreen Windbreak—
The Whim of the Blizzard Winds—Bleak—"Cold as an Abandoned Barn"

PRICES

Windbreak Evergreens

Price: Twice Transplanted—Twice Root-Pruned Stock

			25	50	75	100	
Medium Size,	10	to 12	inch.....	\$10.00	\$19.50	\$27.50	\$35.00
Large Size,	1	to 1½	feet	11.50	22.00	31.00	40.00
Extra Large,	1½	to 2	feet	16.50	32.00	46.50	60.00
Super Size,	2	to 3	feet	21.50	42.00	61.00	80.00

Varieties

Norway Spruce is the variety generally used, although any of the following varieties make excellent windbreaks.

Red Cedar
Scotch Pine
White Pine

Colorado Douglas Fir
Ponderosa Pine

NOTE: These trees are not dug with earth ball or burlapped, but are packed in damp moss, so they reach you in excellent planting condition. Do not confuse these trees with Specimens (Balled and Burlapped) Evergreens, as they are grown in quantities for windbreak purposes.



The Same Farm Home After Given the Blanket-like Protection of a Hill's Evergreen
Windbreak—Warm—Free From Sweep of Wind—Worth Hundreds of
Dollars More to Owner—or Buyer

EVERGREEN HEDGES



Evergreen Hedges serve a practical as well as ornamental value. They make a barrier equal to a tight wire fence.

Hill's Evergreen Hedges

Attractive, Durable, Inexpensive

The wide variety of uses an Evergreen hedge will serve on your grounds is almost without end. The various shapes and sizes into which an Evergreen hedge may be trimmed makes it possible to grow a hedge in almost any situation. It will be found that an Arbor Vitae hedge is just as effective in keeping out intruders as a fence. The branches soon form an almost impenetrable barrier.

Varieties to Use

Evergreens with soft, flexible foliage make the best hedges. The Hemlock, various Junipers and the Arbor Vitae are the most satisfactory among the Evergreens. In most situations the American Arbor Vitae forms the best hedge, although other varieties, such as the Hemlock, shown on page 8 can be sheared into beautiful hedges. Where a hedge is desired for immediate effect the specimen sizes can be used. See sizes and prices of large trees on page 41. Where an economical hedge is wanted, we recommend American Arbor Vitae offered below.

Planting and Cultural Care

Smaller sized Arbor Vitae one to three feet such as those offered below ought to be planted about 1 foot apart. Such an arrangement provides plenty of room for development and still gives the hedge a compact appearance right from the start. In trimming the hedge, the item of first importance is to see that the bottom part has access to air and sunlight. In other words trim in an oval shape or in some manner so that the bottom of the hedge is wider and tapers toward the top.

American Arbor Vitae

(Thuja Occidentalis)

The National Hedge of America

What the Yew hedges are to old English gardens the Arbor Vitae is to America. It forms a most beautiful, compact hedge in a remarkably short time. Its superiority over deciduous (leaf bearing) hedges lies in its deep green color all seasons and the fact it can be kept at any desired height or form. This point is easily seen by comparing the three foot hedge shown on this page and the 8 or 10 foot wall pictured on page 55. We offer three sizes of American Arbor Vitae twice transplanted and twice root pruned for hedge planting.

		Price, Extra Selected Specimens, Balled and Burlapped			
		25	50	75	100
10	to 12 inch xx*	\$10.00	\$19.50	\$27.50	\$35.00
1	to 1½ feet xx	11.50	22.00	31.50	40.00
1½	to 2 feet xx	16.50	32.00	46.50	60.00
2	to 3 feet xx	21.50	42.00	61.50	80.00

If interested in larger trees for immediate effects turn to page 41 for sizes and prices.

Carefully laid walks, trim plots of grass, symmetrical trained Evergreens, all help make up this charming bit of landscape—but the tall graceful curved hedge of American Arbor Vitae is just the finishing touch.





We could not resist using this picture even though it does not particularly concern Evergreens. In even such a detail as the terrace steps the garden atmosphere is remarkably apparent.



HILL'S FOREST AND TIMBER TREES

There has been a widespread interest in Forestry and Woodlot planting and an enormously increased demand for our valuable native timber trees. We have made a speciality of growing this class of stock for many years and have an immense supply always on hand. All are strong, healthy and well rooted, freshly dug, plainly labeled and tied twice in bundles of fifty.

Hill's Evergreen Seedlings

Variety	Size	Per	Per
		100	1000
Abies Douglassi (Douglas Fir)	4 to 6 inches	\$14.00	\$ 80.00
“ “ “ “	6 to 8 “	16.00	100.00
Juniperus Virginiana (Red Cedar)	4 to 6 “	12.00	80.00
“ “ “ “	6 to 8 “	16.00	100.00
“ “ “ “	8 to 10 “	20.00	140.00
Larix Europea (European Larch)	10 to 12 “	14.00	80.00
Picea Alba (White Spruce)	4 to 6 “	16.00	100.00
Picea Canadensis (Black Hill Spruce)	4 to 6 “	20.00	140.00
Picea Excelsa (Norway Spruce)	4 to 6 “	11.00	50.00
“ “ “ “	6 to 8 “	12.50	65.00
“ “ “ “	8 to 10 “	14.00	80.00
Pinus Austriaca (Austrian Pine)	4 to 6 “	18.00	120.00
Pinus Banksiana (Jack Pine)	4 to 6 “	9.00	45.00
“ “ “ “	10 to 12 “	11.00	70.00
Pinus Ponderosa (Bull Pine)	4 to 6 “	10.00	60.00
Pinus Strobus (White Pine)	4 to 6 “	10.00	60.00
“ “ “ “	6 to 8 “	13.00	70.00
Pinus Sylvestris (Scotch Pine)	4 to 6 “	10.00	60.00
“ “ “ “	6 to 8 “	12.00	65.00
Thuja Occidentalis (American Arbor Vitae)	6 to 8 “	14.00	70.00
“ “ “ “	8 to 10 “	12.00	100.00

Hill's Deciduous Seedlings—(Leaf Bearing)

Variety	Size	Per	Per
		100	1000
Acer Saccharum (Hard Maple)	10 to 12 inches	\$15.00	\$ 90.00
“ “ “ “	12 to 18 “	17.00	110.00
Fraxinus Americana (American White Ash)	6 to 12 “	10.00	60.00
“ “ “ “	12 to 18 “	12.00	80.00
“ “ “ “	18 to 24 “	16.00	120.00
Juglans Nigra (Black Walnut)	12 to 18 “	16.00	120.00
Quercus Rubra (Red Oak)	10 to 12 “	20.00	160.00
Tilia Americana (American Linden)	8 to 10 “	20.00	160.00
“ “ “ “	12 to 18 “	25.00	200.00
Ulmus Americana (American White Elm)	2 to 3 feet	30.00	250.00
“ “ “ “	3 to 4 “	38.00
“ “ “ “	4 to 6 “	55.00

50 of same variety and size at 100 rate; 500 of same variety and size at 1000 rate.

Orders for Seedlings must call for at least 50 of any one variety and size.

The Hill Nursery, growers of forestry trees since 1855, maintain the largest Evergreen propagation nursery in America. Our years of experience in growing, packing and handling leave their distinct mark of superiority on every shipment that leaves our nursery. If you have any problems to handle in connection with your forestation or reforestation, our advice is free for the asking.





The garden—the pool—the pergola are all beautiful—but isn't it the Evergreens in tubs that give the finished touch?



One of the Many Uses of Hill's Hardy Evergreens.

Hill's Evergreens for Window Boxes

See to it, during the winter months, that your window-boxes, urns, etc., are filled with hardy Evergreens, just as you see to it that Geraniums and Vincas are there for Decoration Day. A window-box planted with growing Evergreens of different varieties and colors will add much to the appearance of the porch, windows or any room in the house. For winter decoration, Hill's Hardy Evergreens are indispensable. The charming foliage effects and rare fragrance of Evergreens are remarkable, adding color, warmth and cheerfulness, while their rugged hardiness permits outdoor or indoor use all the year around.

Prompt and careful delivery, high quality and courteous attention insure your being pleased with your purchase.

50 Window Box Evergreens assorted varieties 12 to 18 inches, \$45.00
 25 Window Box Evergreens assorted varieties 12 to 18 inches, 23.00

Variety	Size	10	50
Picea Alba (White Spruce)	10 to 12 inches	\$ 8.00	\$36.00
" " " "	12 to 18 "	10.00	45.00
Picea Canadensis (Black Hill Spruce)	10 to 12 "	8.00	36.00
" " " "	12 to 18 "	10.00	45.00
Picea Excelsa (Norway Spruce)	12 to 18 "	10.00	45.00
Pinus Mugho (Dwarf Mountain Pine)	6 to 10 "	8.00	36.00
" " " "	10 to 12 "	10.00	45.00
Thuja Occidentalis (American Arbor Vitae)	10 to 12 "	8.00	36.00
" " " "	12 to 18 "	10.00	45.00
" " " "	18 to 24 "	12.00	54.00
" " " "	2 to 3 feet	15.00	67.50



A Favorite Style for Planting in Front of Window. This box is planted entirely with American Arbor Vitae.

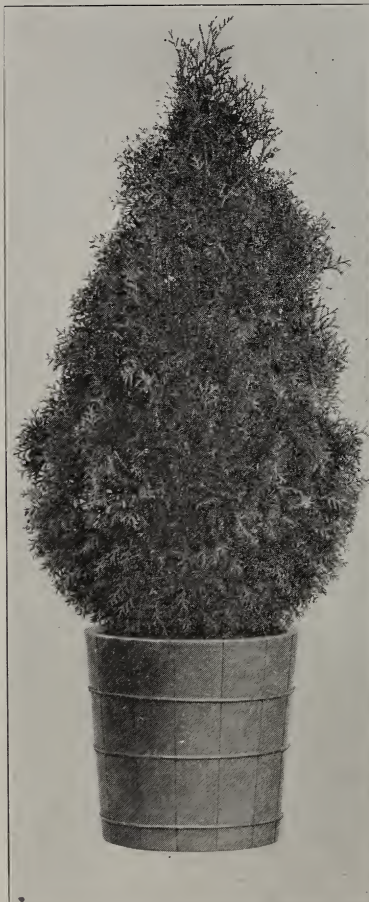


Arbor Vitae

Spruce

Thuya (Globe)

Red Cedar



Thuya Pyramidalis (Pyramidal Arbor Vitae). One of the most satisfactory Evergreens for tubbing.

Hill's Evergreens for Tubbing Clipped Specimens, Bushy Trees

Hill's Evergreens for tubbing stand at the head of the list of hardy plants suitable for outside decoration both summer and winter. They are easily moved from place to place, require little attention, are always green and are never injured by continued cold or freezing.

Can be used in hallways, entrances, balconies or sun parlors and will remain a permanent decoration wherever placed. In summer or winter they attractively add to their surroundings.

Your selection is not limited. The varieties listed below will be ample for your requirements.

	Size Feet	Each	Matched Pairs
Hemlock	2	\$ 8.00	\$15.00
"	3	11.00	21.00
Juniperus Counarti	3	14.00	26.00
Juniperus Glauca	3	13.50	25.00
"	4	18.00	35.00
*Red Cedar	3	9.00	17.00
"	4	14.00	27.00
Black Hill Spruce	3	13.00	25.00
"	4	15.00	29.00
American Arbor Vitae	3	7.50	14.00
"	4	13.50	27.00
"	5	22.50	44.00
"	6	28.00	55.00
Thuya (Sheared Globes) ... 1¼x1¼		8.00	15.00
Pyramidal Arbor Vitae	2	6.50	12.00
"	3	8.00	16.00

*Starred sorts denote leaders.

The trees will reach you with roots balled and securely tied in burlap. We do not furnish tubs. In warm weather the trees should be watered frequently at least once a day.



These grotesque and novel stumps (skipped Topiary work) in Esplanade were trained in the Italian Garden on the
Himmewell Estate, Wellesley, Massachusetts.

Hill's Ornamental Flowering Shrubs

The beauty of shrubs lies in their beautiful flowers, highly colored berries and bark and twigs of various hues. It is our aim to produce only the useful and hardy types, worthy of general cultivation in our climate. A careful study of these short descriptions will make it possible to plan a succession of bloom from early Spring until late in the Fall.

Berberis Thunbergii

(Japanese Barberry)

Small foliage, bright green in color, turning to orange and red in autumn. Scarlet berries hang on the branches all winter. Valuable for low hedges. May be pruned to any form or height. Grows 4 to 6 feet high.

Price	10	100
1 to 1½ feet.....	\$5.00	\$35.00
1½ to 2 feet.....	6.25	50.00
2 to 3 feet.....	7.50	60.00

Cornus Amomum

(Silky Dogwood)

A spreading shrub with reddish purple twigs. Leaves dark green, pale or whitened beneath. Flowers creamy white, early Summer. Fruit bluish white. Grows 6 to 10 feet tall.

Price	10	100
2 to 3 feet.....	\$7.50	\$62.50

Cornus Mascula

(Cornelian Cherry)

A large dense shrub with handsome glossy foliage. Flowers yellow, appearing before leaves in early Spring. Fruit bright scarlet.

Price	10	100
1½ to 2 feet.....	\$7.50	\$62.50

Cornus Paniculata

(Panicked Dogwood)

A free flowering shrub with gray branches. Leaves dull green whitened underneath. Flowers white. Fruit white, borne on deep red stems. Grows 6 to 10 feet tall.

Price	10	100
2 to 3 feet.....	\$7.50	\$62.50

Cornus Siberica

(Siberian Red Osier)

An upright shrub, with bright blood red branches. Leaves dark green, pale underneath. Flowers creamy white in flat top clusters. Fruit light blue or bluish white.

Price	10	100
2 to 3 feet.....	\$7.50	\$62.50

Forsythia Intermedia

(Hybrid Golden Bell)

A tall shrub with slender arching branches. Leaves dark green and lustrous; flowers golden yellow, borne in great profusion.

Price	10	100
2 to 3 feet.....	\$7.50	\$62.50

Ligustrum Amurens

(Amoor River Privet—North)

Hardy. Leaves small and nearly Evergreen. Valuable for hedges. Grows 8 to 12 feet tall.

Price	10	100
2 to 3 feet.....	\$7.50	\$62.50

Lonicera Morrowi

(Japanese Bush Honeysuckle)

Leaves dark green. White flowers bloom in May, followed by red fruit in August. Grows 8 to 12 feet tall.

Price	10	100
2 to 3 feet.....	\$7.50	\$62.50

Lonicera Tatarica

(Tartarian Honeysuckle)

Small, bright red flowers are followed by tiny attractive red or orange berries.

Price	10	100
2 to 3 feet.....	\$7.50	\$62.50



Weigela, Coralberry, Snowberry.

Philadelphus Coronarius
(Sweet Scented Mock Orange)

White flowers in May. Grows 10 feet tall.

Price 10 100
2 to 3 feet\$7.50 \$62.50

Philadelphus Coronarius Grandiflora
(Large Flowering Mock Orange)

Large, white flowers, May and June. Grows 8 to 12 feet tall.

Price 10 100
2 to 3 feet\$7.50 \$62.50

Rhamnus Cathartica
(Common Buckthorn)

Large shrub with spiny branches. Leaves oval dark green and lustrous. Black berries in abundance. Used for hedges.

Price 10 100
1½ to 2 feet\$7.50 \$62.50

Sambucus Canadensis Aurea
(Golden Elder)

Foliage a golden yellow all summer. Flowers white followed by purplish red berries. Grows 6 to 8 feet tall.

Price 10 100
3 to 4 feet\$8.00 \$70.00

Spirea Opulifolia
(Ninebark Spirea)

A large vigorous shrub, bearing an abundance of white flowers in flat clusters, followed by interesting seed pods.

Price 10 100
2 to 3 feet\$7.50 \$62.50

Spirea Van Houttei
(Bridal Wreath)

Of graceful habit. Snow white flowers in panicles appear in May and June. Grows 5 to 6 feet tall.

Price 10 100
2 to 3 feet\$7.00 \$56.00



Philadelphus Grandiflora

Symphoricarpos Racemosus
(Snowberry)

Small pink flowers in July followed by large white berries in the late summer and fall. Grows 4 to 5 feet high.

Price 10 100
2 to 3 feet\$7.00 \$56.00

Symphoricarpos Rubra
(Coral Berry)

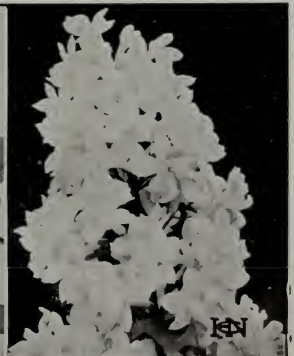
Produces a wealth of red or purplish berries, remaining on the branches all winter. Flowers greenish red in summer. Very showy in early winter.

Price 10 100
2 to 3 feet\$7.50 \$62.50

Viburnum Opulus
(Highbush Cranberry)

Has flat clusters of white flowers in May, followed by red berries which remain on bushes until late in winter. Grows 8 to 12 feet tall.

Price 10 100
1½ to 2 feet\$7.00 \$56.00



Philadelphus, Barberry, Lilac.

An Ideal Combination

For porch corners, to hide low foundation walls, and as a border or underplanting for taller trees and shrubs, the Japanese Barberry and Japanese Spurge (*Pachysandra*) are ideal. They add a finished touch to your home, and are inexpensive.

Japanese Barberry

(*Berberis Thunbergii*)

Dwarfish habit, low, regular and compact. It has small, round green leaves, and fine thorns. In the spring it blooms profusely with pretty drooping yellow flowers, followed by bright red berries, which hang in clusters until late in winter. In the early fall the leaves turn to a brilliant fiery crimson. Barberry hedges have long been great favorites every where. Can be sheared and kept low. Also excellent for border groups, foundation plantings, etc., combined with *Pachysandra*.

Price	10	100
1 to 1½ feet	\$5.00	\$35.00
1½ to 2 feet	6.25	50.00
2 to 3 feet	7.50	60.00



A cheery note in winter, red berried Barberry.

Japanese Spurge

(*Pachysandra Terminalis*)

Japanese Spurge is an Evergreen creeping vine, having dark, glossy green leaves. Can be used as shown below, with Barberry or alone as a low border. Also makes excellent ground cover for shady places. Grows 9 inches tall.

Price	50	100
4 to 6 inch (Transplanted)	\$7.50	\$15.00



Let the nooks and corners around your home abound with cheer. Only a little corner, but it reflects its owner.



再

Specimen *Ilex* in nursery row.

A Word of Appreciation

We wish here to express sincere thanks to our many friends and patrons who have written kind words relative to the quality of stock and treatment they have received from us the past season. We greatly appreciate these expressions of confidence and shall endeavor to maintain the reputation they have so kindly given us.

Hill Quality

The name of D. Hill has come to be synonymous with "High Quality" in Evergreens. Over half a century of conscientious effort, unbounded enthusiasm, a close study of the value of every new specie introduced; and above all, an ambition to make new friends and keep the old, has been the method by which this high position has been reached.

Your Success With Our Stock

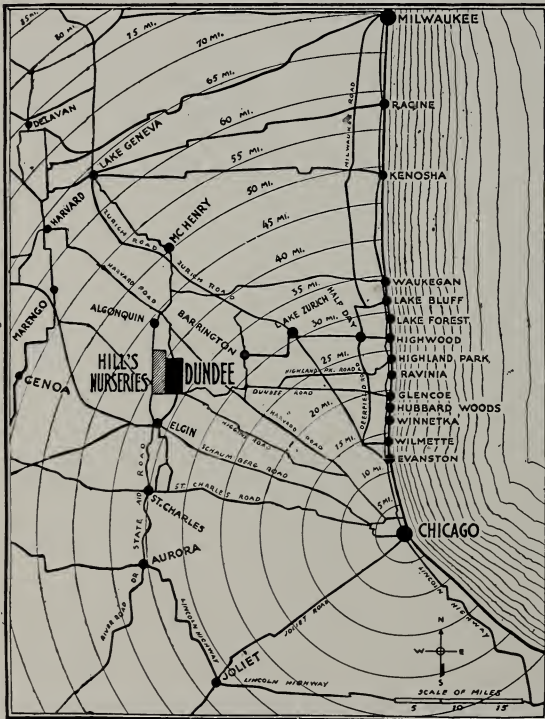
is a matter in which we are mightily interested. Therefore, we endeavor to do everything reasonable within our power to help you succeed with the stock we send you, because we love trees and want you to enjoy them also. No firm is more careful in filling orders; we use every reasonable means to learn the customer's wishes without delaying the shipment. Your interests are our interests and we present you this 1921 catalog, confident that we merit your trade, and assure you of the best treatment, whether the order is large or small.

How to Reach Our Nursery

Visitors are always welcome. We are conveniently located only 42 miles northwest of Chicago.

When coming by the way of Chicago, you are directed to the C. & N. W. Depot on Madison Street, from where it is an interesting ride of one hour and thirty minutes direct to Dundee.

For an hourly service from Chicago, take the A., E. & C. Electric Line at Wells Street and Jackson Boulevard, direct to Elgin, transferring to the Dundee-Carpentersville car, getting off at Stop No. 4, from where it is but a two-minute walk direct to our office, which is located right on the nursery grounds.



Paved road from Chicago brings you direct to our Nursery

Business Terms

Prices. Prices in this catalog are F. O. B. Dundee, Illinois. There are no charges for packing or delivery to the railroad station. This catalog cancels all previous catalogs and price lists.

Terms. Cash should accompany orders from all unknown customers. Charge account service will be extended to those who furnish satisfactory references.

Rates. Five trees of same variety and size will be furnished at 10 rate, 50 of same variety and size at 100 rate.

Our Responsibility. We exercise the greatest care to have all stock genuine and reliable and hold ourselves prepared to replace on proper proof all that proves untrue. In case of any error on our part, it is mutually agreed between the purchaser and ourselves, that we shall not at any time be held responsible for a greater amount than the original price of goods.

Guarantee. We guarantee that all Evergreens purchased from us will reach you safely and in good condition, be found true to name and prove entirely satisfactory or we cheerfully refund money paid.

Adjustments. Any errors or omissions in execution of orders will be satisfactorily adjusted if we are notified immediately upon receipt of goods.

Our Shipping Facilities. On account of our close proximity to Chicago, (the great railway center), we have direct access to all the leading railroads. In most cases specimen Evergreens dug with solid earth balls are shipped by freight.

Your Correspondence is Invited

The Home of Evergreens

In 1855 the Hill nursery, with only a few acres, devoted exclusively to Evergreens, was started at Dundee, Illinois, thirty-five miles north-west of Chicago. The nursery has now expanded until at the present time it covers an area of 500 acres with an annual output of hundreds of thousands of trees.

Selection Almost Unlimited

There is a wide range of varieties and sizes to choose from. Sorts of every shape from the tall and stately to the half erect and prostrate forms for every purpose. The straight rows of symmetrical Evergreens and well cultivated clean blocks of trees, suggest to any visitor the great care given to all Hill Evergreens.

Soil and Location Ideal

Nature could not have provided a more fertile, soil-perfect country for growing Evergreens. We are located in the famous Fox River Valley, in a prosperous farming district just far enough north to insure hardiness and just far enough south for good substantial growth. We extend to all a hearty invitation to visit the Home of Evergreens. Map of auto roads leading to nursery is shown on page 66.

The D. Hill Nursery Company, Inc.
Dundee, Ill.

