

Historic, archived document

Do not assume content reflects current scientific knowledge, policies, or practices.

6.21/3

5-19-52



Rhododendron.

—•••] CATALOG OF [•••—

Better and Rarer

SHRUBS
 TREES, EVERGREENS
 HEDGE PLANTS and VINES



R. Marshall Jr., Prop.

BRIMFIELD GARDENS NURSERY
 245 BRIMFIELD ROAD
 WETHERSFIELD, CONNECTICUT

FOREWORD



LOCATED four miles south of Hartford on Brimfield Road, just west of Wolcott Hill Road. Visitors are always welcome. We have listed a limited number of varieties, mainly the newer, rarer and better types of plants, also standard or "every day" varieties may be had at the Nursery. We have fine, large specimen evergreens for immediate effect and where larger trees are required, we are in a position to procure these.

We will gladly plan and execute the entire landscaping of your home or follow out the plans of your own architect. We have fine old weatherbeaten picturesque lime rock for the making of rock gardens and pools. We shall be glad to have your inquiries for prices and quantities of stock as prices fluctuate more or less on some items. Prompt service and personal attention given all orders and we shall be glad to give expert advice on any landscaping problems you may have.

Our stock is well grown, dug freshly and carefully and supplied with a fibrous root system which is of vital importance to the healthy growth of a plant. On receiving stock from the nursery always keep roots moist and covered until planted and keep from sun and wind. Our Evergreens are sheared several times a season keeping them bushy and healthy.

ROBERT MARSHALL, JR.,
Proprietor.

*Better and Rarer Varieties of***SHRUBS AND TREES**

Azalea Louisa
Hunnewell Hybrids.

- AZALEA Schlippenbachii**—Large, beautiful shell pink. One of the best. 12 in. \$2.00; 18 in. \$3.00.
- AZALEA Poukhanense**—Dwarf, bushy rose-lavender. Fine for the rock garden. 12 in. \$1.50; 15 to 18 in. \$2.50.
- AZALEA Hinamayo**—Clear soft pink. Fine for sheltered spot. 10 in. \$1.50.
- ARONIA ARBUTIFOLIA Brilliantissima**—A fine red-berried neat shrub. 75c.
- BERBERIS Verruculosus**—Beautiful dwarf holly-like evergreen. Lustrous green leaves with silvery-white reverse. 10 to 12 in. 75c.
- FOTHERGILLA Major**—The white bottle brush shrub. 2 to 3 ft. \$3.00.
- COTONEASTER Apiculata**—Far superior to Cotoneaster Horizontalis, with much larger red berries throughout the winter. 2 to 3 ft. spread \$2.50; 15 to 18 in. 75c.
- COTONEASTER Salicifolia Floccosa**—Graceful arching branches, long shiny evergreen leaves and loaded with bright red berries, grows up to 7 ft. 2 ft. \$1.00 each.
- COTONEASTER Racemiflora Soongarica**—A large growing shrub covered with large red berries early in the fall. 3 to 4 ft. \$1.00.
- HYBISCUS Syriacus Coelestis**—Beautiful large single hollyhock-like blue flowers from July until frost. 3 to 4 ft. \$1.00 each.
- AMYGDALIS Persica Pendula Rubroplena**—Double, red, flowering weeping peach. 5 to 6 ft. \$2.00 each.
- HYBISCUS Syriacus W. R. Smith**—A fine contrast for the above with large saucer-like white flowers. 3 to 4 ft. 75c.

*Exochorda.*

EXOCHORDA Grandiflora Wilsoni—With white flowers much larger than the type and buds like large pearls. 2 to 3 ft. \$1.50.

PYRACANTHA Coccinea—Evergreen Firethorn—Covered with clusters of orange berries well into the winter. A most magnificent shrub. Ours is a hardy strain. 2 to 3 ft. \$2.00.

EUONYMUS Americana—The strawberry shrub—the finest of the shrub Bittersweet, covered with showy strawberry-like orange-scarlet fruits. 2 to 3 ft. 75c.

CORNUS Kousa—The Japanese Dogwood—Should be in every collection, blooms a month later than the American and has more perfect flowers. 4 to 5 ft. \$2.50; 2 ft. \$1.00.

VIBURNUM Carlesii—The daintiest of shrubs—blush pink arbutus-like flowers with fragrance similar to the Daphne. Our plants are grown on their own roots—the most satisfactory way. 50c and up.

VIBURNUM Dilitatum—White flowers and bright red berries in fall. 75c.

PRUNUS Serrulata Pendula—The double weeping Japanese Cherry—slower growing than the common single type and covered with garlands of pink rose-like blooms. 6 ft. standards \$3.50.

PRUNUS Subhirtella Pendula—A double form of the well-known weeping cherry. 6 ft. standards \$2.50.

ILEX Verticillata (Deciduous Holly)—Still one of the best red-berried shrubs. 3 to 4 ft. 75c each.

MAGNOLIA Stellata—The white star Magnolia. One of the prettiest small flowering trees. 2 to 3 ft. \$5.00 each.

SPIREA Prunifolia—The old-fashioned white Button Variety Spirea—very lovely. 3 to 4 ft. 75c.

STYRAX Obassia—Shrub with large round leaves and clusters of white flowers. \$1.50.



Pyracantha Coccinea.

ROSA Hugonis—One of the earliest shrub roses to bloom—just a mass of golden yellow single blooms. 2 yr. plants 60c.

ILEX Opaca—The American Holly, with its evergreen leaves and red berries should be more widely planted. Plants \$1.00 and up.

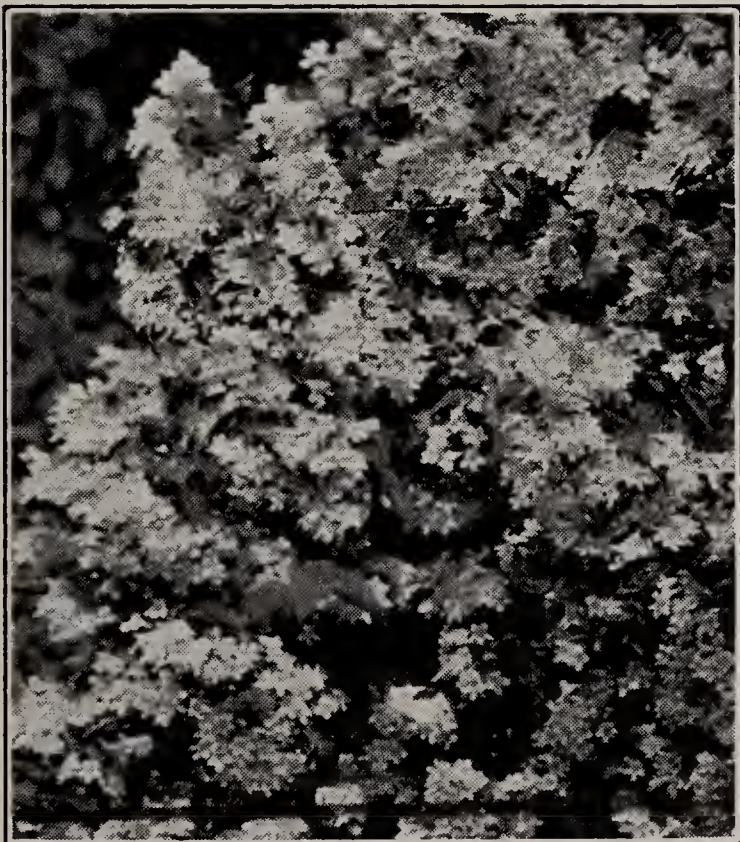
ILEX Opaca Fructo-luteo—A variety of the American Holly with yellow fruits. \$2.50.

ANDROMEDA Floribunda—A compact growing evergreen shrub with lily-of-the-valley like flowers—in early spring. 15 to 18 in. plants \$2.00.

ENKIANTHUS Companulata—The Japanese bell shrub—with dainty clusters of cream colored bells striped red or pink. 2 to 2½ ft. \$1.00 each.

ENKIANTHUS Cernua Rubra—A red flowered form—very lovely—18 in. plants \$1.50.

KOLKWITZIA Amabilis—The Beauty Bush—A lovely shrub with pink flowers which has at last received the attention it merits. 75c and up.



Kolkwitzia Amabilis.



Cornus Florida or Rubra.

- BUDDLEIA Ile de France**—Its dark violet flowers are very attractive from July until fall. Nice plants, 75c.
- CORNUS Florida Rubra**—The pink flowered Dogwood. 5 to 6 ft. \$3.00; 2 ft. \$1.00.
- WISTARIA Chinensis, Lavender**—Trained tree-shape. 5 to 6 ft. \$5.00 each.
- WISTARIA Chinensis**—As a shrub or vine. 8 yr. heavy plants which have bloomed. \$3.50 to \$5.00.
- WISTARIA Multijuga**—The long clustered Japanese form. 3 to 4 ft. \$1.00 each.
- SALIX Multinervis**—The large type Pussy Willow. 75c to \$1.00 each.
- CHIONANTHUS Virginica**—The white fringe. 4 to 5 ft. \$1.50 each.
- DAPHNE Cneorum**—For the rock garden. Very fragrant pink flowers. 10 to 12 in. 60c.
- AESCULIS Octandra**—Showy orange flowers. May be grown as a shrub in the North. 2 to 3 ft. 75c.
- LABURNUM Alpinum**—Golden Chain, golden wistaria-like flowers. This type has proved hardy in New England. 4 to 5 ft. \$1.50.
- LEPTODERMIS Oblonga**—A small shrub with clusters of purple flowers in summer. \$1.50.
- CYTISSUS Scoparius Suecica**—A hardy type of Scotch Broom—with golden yellow pea-like flowers. 75c.
- MAHONIA Bealii**—A Japanese evergreen shrub with impressive long Holly-like leaves. \$1.00 each.
- OXYDENDRON Arboreum**—4 to 5 ft., the Sorrel Tree, Lily-of-the-Valley-like flowers in August and the Fall coloring surpasses any other tree. 4 to 5 ft. \$2.00.
- FORSYTHIA Spectabilis**—The finest of the Forsythias. 4 ft. 75c.

We have a good assortment of the commoner varieties of flowering shrubs priced from 35c to \$1.00.

*Picea Excelsa.*

EVERGREENS

- PINUS Sylvestris**—The Scotch Pine, a fast growing hardy tree for screens and wind-breaks. 3 to 4 ft. \$1.00.
- PINUS Flexilis**—The Limber Pine, a pretty bluish western pine. 3 to 4 ft. \$1.50.
- PINUS Nigra Austriaca**—3 ft. \$1.00; 6 to 8 ft. \$3.00 to \$10.00.
- PINUS Strobus**—The White Pine. 6 to 7 ft. \$4.50; 7 to 8 ft. \$8.00 to \$10.00.
- PINUS Jeffreyi**—A western pine which has the longest needles of any pine hardy in this locality 2 to 3 ft. \$2.00.
- PINUS Mughus**—Dense slow-growing cushions for foundation, hedge or rock garden planting. This is the finest block of trees in our Nursery. 15 to 18 in. 75c; 18 to 24 in. \$1.00; 2 to 2½ ft. spread \$2.50.
- PICEA Excelsa**—Norway Spruce. 2 to 3 ft. \$1.00; 1½ to 2 ft. 75c.
- PICEA Glauca**—White Spruce. 2 to 3 ft. \$1.00; 1½ to 2 ft. 75c.
- PICEA Pungens Glauca**—Colorado Blue Spruce. 12 to 18 in. \$1.00 each.
- PICEA Pungens Kosteri**—Koster's Blue Spruce. 4 ft. specimens \$7.00.
- PICEA Pungens Kosteri Pendula**. 3 ft. \$8.00.
- ABIES Veitchi**—Japanese Silver Fir. 1½ to 2 ft. \$1.00.
- ABIES Homolepis**—Japanese Fir. 18 in. \$1.00.
- ABIES Nordmanniana**. 5 to 6 ft. \$15.00 each.
- JUNIPERUS Excelsa Stricta**—The Greek Juniper. 15 to 18 in. 75c.
- JUNIPERUS Chinensis Columnaris**—The best narrow column-shape tree for spire effects. 4 to 5 ft. \$2.50 each.
- JUNIPERUS Chinensis Pfitzeriana**. 3 to 4 ft. \$3.00; 2 to 3 ft. \$2.00.



Tsuga Canadensis Hemlock.

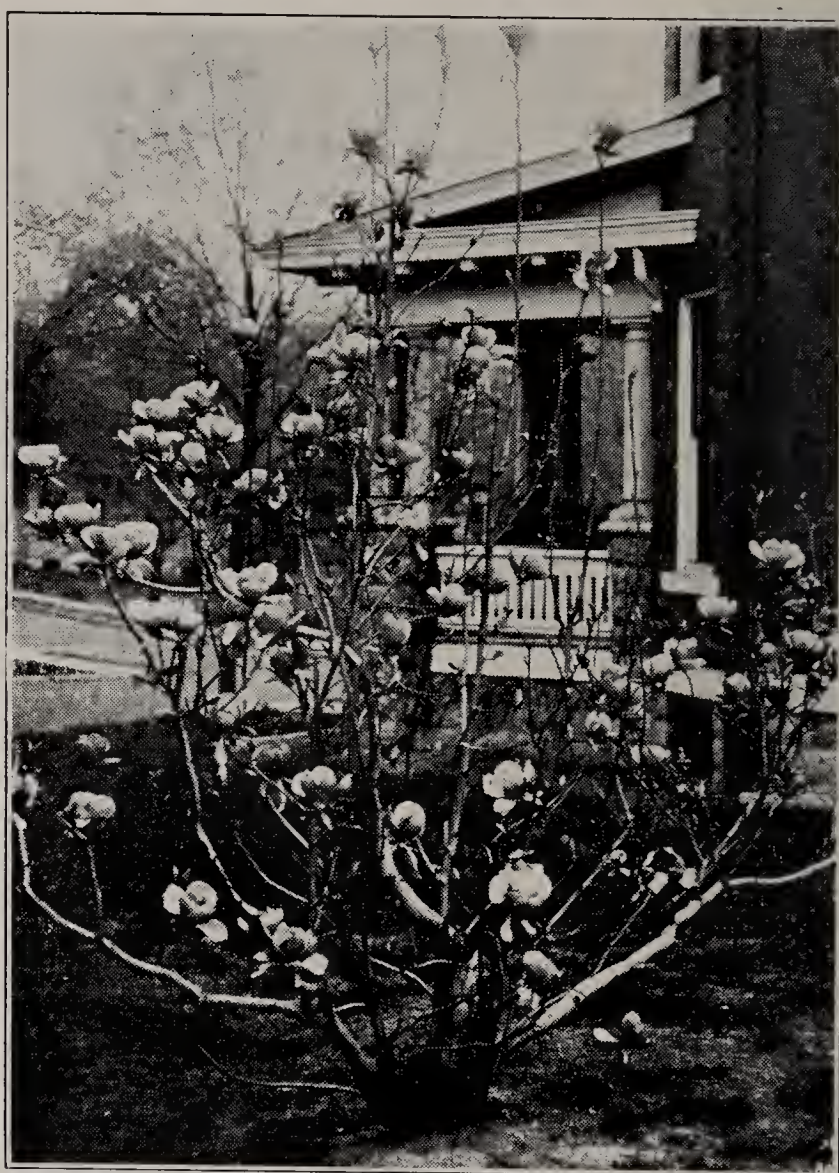
- CHAMAECYPARIS Pisifera.** 2 to 3 ft. \$1.50; 18 to 24 in. 75c.
- CHAMAECYPARIS Pisifera Aurea**—2 to 3 ft. \$1.50; 18 to 24 in. 75c.
- CHAMAECYPARIS Pisifera Plumosa**—Plume Cypress. 3 to 4 ft. \$2.50; 4 to 5 ft. \$5.00; 5 to 6 ft. \$7.00.
- CHAMAECYPARIS Pisifera Plumosa Aurea**—3 to 4 ft. \$2.50; 4 to 5 ft. \$5.00; 4 to 5 ft. \$7.00.
- CHAMAECYPARIS Pisifera Filifera**—The Thread-branched Cypress. 4 to 5 ft. \$5.00.
- THUYA Occidentalis**—American Arbor Vitae. 3 to 4 ft. \$1.25; 2 to 3 ft. \$1.00; 6 to 8 ft. \$7.00.
- THUYA Occidentalis Pyramidalis**—4 to 5 ft. \$2.50; 6 to 8 ft. \$5.00 each.
- TAXUS Cuspidata**—Japanese Upright Yew. 2 to 3 ft. \$5.00 each; 1½ to 2 ft. \$1.50 each.
- TAXUS Cuspidata**—Spreading type. 2 to 2½ ft. \$2.00 each.
- TAXUS Cuspidata Aurescens**—8 to 12 in. \$1.00 each.
- TAXUS Cuspidata Nana**—Slow growing type. 15 to 18 in. \$2.00 each.
- TAXUS Cuspidata Nana Erecta**—Slow growing upright type. 2 ft. \$2.50 each.
- TAXUS Media Hicksi**—2 to 3 ft. \$3.00 each; 3 to 4 ft. \$4.00 each.
- TSUGA Canadensis**—5 to 6 ft. \$3.00; 2 to 3 ft. \$1.50.



Norway Maple.

SHADE TREES

- ACER Platanoides**—Norway Maple. 8 to 10 ft. \$2.00; 10 to 12 ft. \$3.00; 12 to 15 ft. \$4.50.
- ACER Platanoides**—Schwedleri, a purple leaf form. 8 to 10 ft. \$3.00.
- ACER Saccharinum**—Sugar Maple. 12 to 15 ft. \$4.50.
- ACER Dasycarpum**—Silver Maple. 12 to 15 ft. \$3.00.
- ACER Rubra**—8 to 10 ft. (Red Maple), \$2.00.
- QUERCUS Palustris**—Pin Oak. 8 to 10 ft. \$4.00 up.
- QUERCUS Rubra** (Red Oak). 8 to 10 ft. \$3.50.
- FAGUS Americana**—American Beech. 10 to 14 ft. \$5.00 and up.
- BETULA Alba Laciniata**—The European cut-leaf weeping birch. 12 to 14 ft. \$4.50; 8 to 10 ft. \$2.00.
- PLATANUS Orientalis**—Button Ball or Plane Tree. 12 ft. \$3.00.
- TILIA Americana**—American Linden. 10 to 12 ft. \$4.00; 8 to 10 ft. \$3.00.
- ULMUS Americana**—American Elm. 14 to 16 ft. \$4.50 each.
- ULMUS Americana**—Moline type. 12 ft. \$3.00.
- POPULUS Italica**—The Lombardy Poplar. 8 to 10 ft. 75c; 10 to 12 ft. \$1.00.
- GYMNOCLADUS Dioicus**—Kentucky Coffee Tree. 8 to 9 ft. \$3.00 each.
- ARALIA Spinosa** (Devil's Walking Stick)—6 to 8 ft. \$1.00 each.
- SALIX Babylonica**—Weeping Willow. 7 to 9 ft. \$1.00 to \$2.00 each.



Magnolia Soulangeana.

FLOWERING TREES

- PRUNUS Subhirtella Pendula**—Japanese Weeping Cherry. Early Pink. 6 ft. \$2.50.
- PRUNUS Subhirtella Pendula, Var. Plena**—A double form of above. 6 ft. \$3.00.
- PRUNUS Subhirtella Autumnalis**—A form that blooms again in the Fall. 6 ft. \$3.00.
- PRUNUS Serrulata**—Double flowering Japanese Cherries in variety. \$2.00 and up.
- SORBUS Aucuparia**—European Mountain Ash. 10 to 14 ft. \$2.50 and up.
- MALUS Arnoldiana**—Pink Flowering Crab Apple. 4 to 6 ft. \$1.50 up.
- MALUS Sargentii**—White flowers and red berries that hang on until late in the Winter. 4 to 6 ft. \$1.50 up.
- MALUS Bechteli**—Bechtel's double flowering pink crab apple. 6 to 7 ft. \$2.00.
- MALUS Neidswetziana**—Deep pink flowers. 6 to 8 ft. \$2.50.
- MALUS Eleyi**—Deep rose large flowers. 5 to 6 ft. \$1.50 up.
- MALUS Eva Rathke**—Weeping Crab Apple. 3 to 4 ft. \$5.00.
- SYRINGA Japonica**—Japanese Tree Lilac. Large white flowers. 6 to 8 ft. \$3.50.



White Dogwood.

MAGNOLIA Soulangeana—Chinese Magnolia with Pink flowers. 4 to 5 ft. \$3.00; 6 to 8 ft. \$10.00.

MAGNOLIA Glauca—Late. Cream colored flowers. 3 to 4 ft. \$1.50.

CORNUS Florida—White Dogwood. 8 to 10 ft. \$5.00; 6 to 8 ft. \$2.50.

AESCULIS Hippocastanum—White flowering Horse Chestnut. 6 to 8 ft. \$2.00.

AESCULIS Hippocastanum, Var. Rubicunda—Pink Horse Chestnut. 9 to 10 ft. \$8.00.

HALESIA Tetraptera—Silver Bell Shrub. 4 to 5 ft. \$1.00.

AMYGDALUS Rubra Plena—Beautiful double red flowering Peach. 6 ft. \$2.50.

KOELREUTERIA Paniculata—The Golden Rain Tree. 4 to 5 ft. \$1.75.

MALUS Halliana Parkmani—Parkman's Crab Apple. Dainty pink flowers. One of the best. 4 to 5 ft. \$2.00.

SORBUS Aucuparia Pendula—Weeping Mountain Ash. 6 ft. \$4.00.

CERCIS Canadensis—American Red Bud or Judas Tree. 6 ft. \$1.50.

CRATAEGUS Oxycantha Splendens—Paul's Double Hawthorne. 6 to 8 ft. \$2.00.

SYMPLOCOS Paniculata—Asiatic Torquoise Berry. 4 to 5 ft. \$2.25.

DWARF SLOW GROWING EVERGREENS AND UNUSUAL TREES

*For Specimen, Rock Garden and
Foundation Plantings*

- CHAMAECYPARIS** *Obtusa Gracilis Compacta*—Slow growing Japanese Cypress. 18 to 24 in. \$3.50 each.
- CHAMAECYPARIS** *Obtusa Nana*—Very slow growing type. 15 in. \$3.50; 2 to 3 ft. \$7.50.
- CHAMAECYPARIS** *Obtusa Crippsi*—Beautiful golden foliage. 2 ft. \$3.00.
- CHAMAECYPARIS** *Obtusa Lycopodoides*—Rare moss-like leaves. 12 to 15 in. \$2.50.
- CHAMAECYPARIS** *Obtusa Filicoides*—Fern-leaved cypress. 12 to 15 in. \$2.50.
- CHAMAECYPARIS** *Pisifera Plumosa Nana*—Dwarf Plume Cypress. 8 to 12 in. \$2.00.
- CHAMAECYPARIS** *Pisifera Squarrosa Nana*—Dwarf Moss Cypress. 8 to 12 in. \$2.00.
- CHAMAECYPARIS** *Pisifera Filifera Nana*—Dwarf Thread-branched Cypress. 8 to 12 in. \$2.50.
- THUYA**, *Little Gem, Pygmy Arbor Vitae*—8 to 12 in. \$1.50.
- THUYA**, *Occidentalis, Var. Rheingold*—8 to 12 in. 75c.
- THUYA**, *Occidentalis, Var. Filiformis*—2 to 2½ ft. \$2.50.
- THUYA**, *Occidentalis, Var. Ohlendorfi*—10 to 12 in. \$1.50.
- PICEA** *Excelsa Maxwelli*—Handsome Dwarf Spruce. 3 ft. spread \$30.00 each.
- PICEA** *Excelsa Pygmea*—2 to 4 ft. spread \$5 to \$12 each.
- PICEA** *Excelsa Inverta*—2½ to 3 ft. \$8.00.
- JUNIPERUS** *Virginia Glauca*—Blue Cedar. 2 to 3 ft. \$2.50.
- JUNIPERUS** *Virginia Inverta*—New Weeping Cedar. 18 to 24 in. \$5.00.
- JUNIPERUS** *Virginia Vegetus*—A beautiful blue-berried type. 2 to 3 ft. \$4.00.
- CRYPTOMERIA** *Japonica Lobbi*—A picturesque redwood-like evergreen which should be more widely planted. 2½ to 3 ft. \$2.50 each; 6 to 8 ft. \$10.00.
- PICEA** *Glauca Conica*—Dwarf Alberta Spruce. 2 to 10 in. \$1.00 each; 15 to 18 in. \$3.00.
- PINUS** *Sylvestris Fastigiata*—Perhaps the rarest of evergreens—a narrow gray shaft. 2 to 3 ft. \$10.00; 3 to 4 ft. \$15.00.
- PINUS** *Strobus Umbraculifera*—A dwarf globose white pine with beautiful bluish needles. 18 in. \$5.00 each.
- PINUS** *Strobus Pumila*—A scarce variety with short green needles. 15 to 18 in. \$5.00.
- LIBOCEDRUS** *Decurrens*—The incense cedar of California. 4 to 5 ft. \$7.50.
- CEDRUS** *Libani*—Ours is the true hardy Cedar of Lebanon. 2 to 2½ ft. \$5.00 each.
- SCIADOPITYS** *Verticillata*—The Japanese Umbrella Pine. 4 to 5 ft. \$15.00.
- TAXODIUM** *Distichum*—The Bald Cypress, feathery fern-like foliage. 5 to 6 ft. \$5.00.
- TSUGA** *Canadensis Pendula*—The weeping Hemlock. 18 in. \$2.00 each.
- TSUGA** *Canadensis Hussi*—One of the smallest evergreens. 6 to 8 in. \$2.00 each.
- PICEA** *Omorika*—Serbian Spruce. 2 ft. \$2.00 each.
- PICEA** *Jezoensis*—Beautiful Japanese Spruce with green and blue needles. 3 ft. \$5.00.

*Rhododendron.*

RHODODENDRONS AND AZALEAS

RHODODENDRON Catawbiense Native—Pink to light purple. 18 to 24 in. \$2.25; 2 to 2½ ft. \$3.00.

RHODODENDRON Caroliniana—Fine small pink flowered species. 18 to 24 in. \$2.50.

RHODODENDRON Caroliniana Alba—White flowered form. 12 to 18 in. \$1.50.

RHODODENDRON Hybrids:

Boule de Neige—Very hardy slow growing white. 18 in. \$4.50; 2 ft. \$6.00.

Atrosanguinea—Good dark red. 18 in. \$5.00.

Lee's Dark Purple—18 to 24 in. \$4.50.

Catawbiense Alba—One of the best whites. 18 to 24 in. \$4.50.

Kettledrum—Bright red. 2 to 3 ft. \$7.50.

Mrs. C. S. Sargent—Good pink. 18 in. \$4.50.

RHODODENDRON Smirnowi—A fine Caucasian specie with clear pink flowers. 10 to 12 in. \$2.00.

RHODODENDRONS—Our own hybrids in mixed colors. 18 to 24 in. \$2.50 and up.

AZALEA Poukhanense—Dwarf compact lavender. 10 to 12 in. spread \$1.00; 12 to 15 in. \$1.50; 15 to 18 in. \$2.00; 18 to 24 in. \$3.00.

AZALEA Schlippenbachii—Clear large shell pink. 10 to 12 in. \$1.50; 12 to 15 in. \$2.00; 15 to 18 in. \$3.00; 18 to 24 in. \$3.50.

AZALEA Vaseyi—Light pink. 15 to 18 in. \$1.25; 18 to 24 in. \$1.75.

AZALEA Kaempferi—Salmon-colored Torch Azalea. 15 to 18 in. \$1.50; 18 to 24 in. \$2.00; 2 to 2½ ft. \$3.50.

AZALEA Mucronulatum—Rose colored, blooms with Forsythia. 18 to 24 in. \$2.00; 2 to 2½ ft. \$2.50.

AZALEA Louisa Hunnewell Hybrids—Shades of orange. 12 to 15 in. \$1.50; 15 to 18 in. \$2.00.

AZALEA Calendulacea—18 to 24 in. \$2.00; 5 ft. specimens \$10.00.

SOME GOOD SUBJECTS*For the Rock Garden*

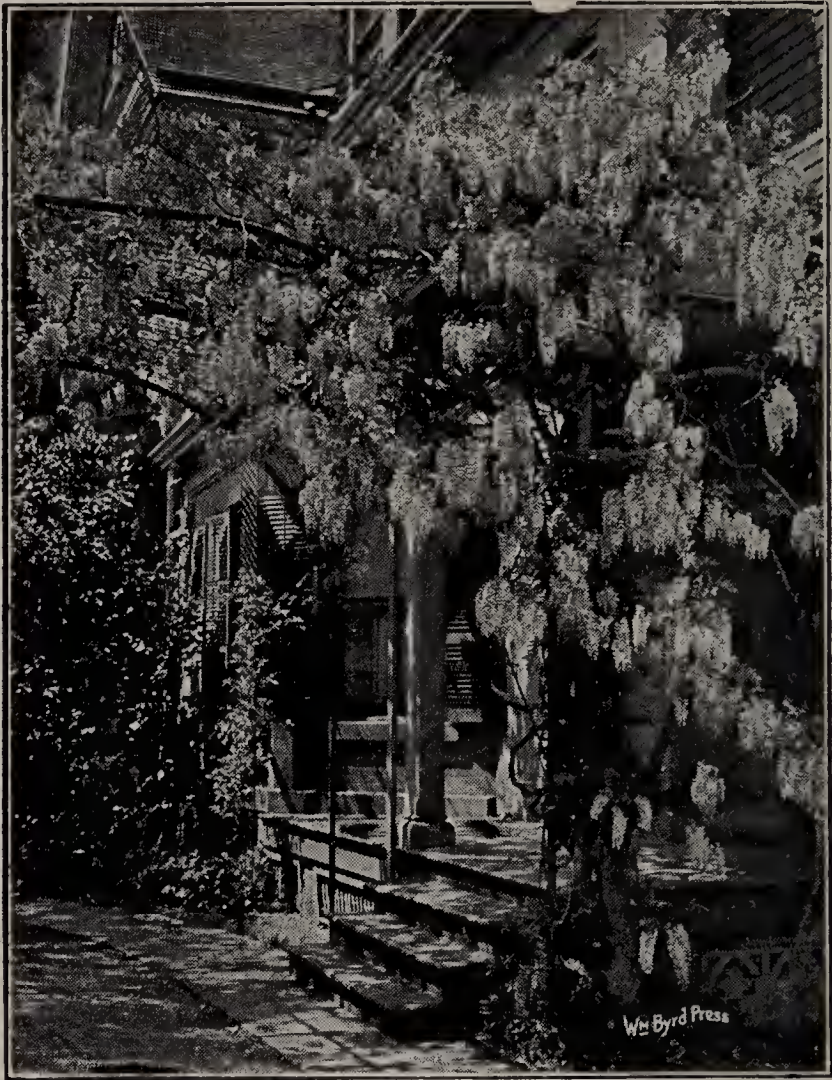
- SKIMMIA Japonica**—With rich laurel like leaves and red berries. 4 to 6 in. 75c; 6 to 8 in. \$1.00.
- ERICA Carnea**—A hardy heath with rose colored flowers in early spring. 6 to 8 in. 75c.
- AZALEA Macrantha**—Late salmon colored flowers. 4 to 6 in. 75c.
- SHORTIA Galacifolia**—Oconee Bells, with shiny evergreen leaves and dainty nodding pink flowers. 35c.
- GALAX Aphylla**—Shiny bronze evergreen leaves with spikes of white flowers. 30c.
- AQUILEGIA Flabellata Nana**—A dwarf white columbine with rich bluish foliage—a gem. 25c.
- IRIS Gracilipes**—The daintiest of Irises with lavender flowers. 30c.
- PHLOX Divaricata Laphami**—Pure lavender, about one foot high. 30c.
- PHLOX Vivid**—Creeping, clear pink. 25c.
- PULMONARIA Angustifolia Azurea**—Deep sky blue flowers. 35c.
- COTONEASTER Adpressa**—Very slow growing, large red berries. 8 to 10 in. \$1.00.
- EUONYMUS Radicans Minimus**—Forms a dense green mat. 35c to 75c.
- COTONEASTER Humifusa**—A real creeper. 50c.
- THYMUS Serpyllum Coccineus & Albus**—A fine leafed creeper. 20c.
- THYMUS Serpyllum Aureum**—A golden leafed type. 25c.
- ASTER Mauve Cushion**—Grows 10 inches, blooming in October. 20c.
- ROSA Rouletti**—A miniature rose, strong plants. 75c.
- VIOLA Jersey Gem**—Dark purple. an old favorite. 15c.
- KOREAN Hybrid Chrysanthemums**—Mars, Ceres, Apollo, Diana. 35c.
- POTENTILLA Tridentata**—Almost evergreen with white blossoms. 25c.
- VACCINEUM Buxifolium**—Neat little evergreen shrub with nodding pink bells and red berries. 50c.
- GEUM Borisi**—With showy red-orange flowers in spring. 30c.
- HEUCHERA Pluie de Feu**—A fine red flowered type. 25c.
- VERONICA Rupestris**—Creeping blue. 20c.
- VERONICA Filiformis**—Creeping lavender blue, saucer shaped flowers. 20c.
- VERONICA Pectinata Rosea**—Gray foliage, pink flowers, creeping. 25c.
- VIOLA Rosina**—Pink fragrant violet. 25c.
- VINCA Minor Bowles Variety**. 20c.
- VINCA Minor Alba**—20c.
- VINCA Minor Alpina**—25c.
- PACHYSANDRA Terminalis**—Forms a heavy ground cover. 20c.
- GENISTA Sagittalis**—Prostrate, yellow flowers. 30c.
- HELLEBORUS Niger**—Xmas Rose—Nice plants. \$1.00.
- INDIGOFERA Decora**—With pink or white pea like flowers. 50c.



Barberry.

HEDGE PLANTS

- LIGUSTRUM Ivolium**—Same glossy leaves as California Privet, but much hardier. 1½ to 2 ft. \$4.00 per 100; 2 to 2½ ft. \$6.00 per 100; 2½ to 3½ ft. \$8.00 per 100.
- PINUS Mughus**—Forms the finest of low evergreen hedges. 15 to 18 in. \$50.00 per 100; 1½ to 2 ft. \$65.00 per 100.
- TAXUS Cuspidata, Jap. Yew**—Another fine evergreen hedge. 12 to 18 in. \$45.00 per 100.
- BERBERIS Thunbergi Jap. Barberry**—1 to 2 ft. \$10.00 per 100.
- PICEA Glauca, White Spruce**—Makes a very dense hedge. 15 to 18 in. \$35.00 per 100.
- MALUS Sargenti**—Makes a high hedge. 5 ft. \$60.00 per 100.
- AZALEA Kaempferi**—A magnificent sight with salmon flowers. 12 to 15 in. \$60.00 per 100; 15 to 18 in. \$75.00 per 100.
- TSUGA Canadensis**—A rich feathery hedge. 18 in. \$40.00 per 100; 2 ft. \$60.00 per 100.
- ILEX Crenata**—Rich like boxwood. 1½ to 2 ft. \$100.00 per 100.
- JUNIPERUS Rigida**—The needle Juniper makes an unusual golden bronze hedge. 1½ to 2 ft. \$75.00 per 100.
- ILEX Verticillata**—With its red berries makes one of the finest and requires hardly any clipping. 3 ft. \$55.00 per 100.
- PINUS Flexilis (the Limber Pine)**—Makes a fine large evergreen hedge. 3 to 3½ ft. \$55.00 per 100.



Wistaria.

VINES

- HYDRANGEA Scandens** (Climbing Hydrangea). \$1.00.
HEDERA Helix—English Ivy for walls and ground cover. 20c.
AMPELOPSIS Veitchi, Boston or Jap. Ivy. 35c.
EUONYMUS Radicans—Strong plants. 50c.
EUONYMUS Radicans Vegetus—3-year plants, berried type. 35c.
EUONYMUS Radicans Carrieri—3-year plants, glossy leaves. 35c.
CLEMATIS Paniculata—Feathery flowers in fall. 35c.
CLEMATIS Jackmanni—Large purple. 75c.
CLEMATIS Ramona—Large lavender. 75c.
CLEMATIS Mme. Edouard Andre—Large red. 75c.
POLYGONUM Auberti—The silver lace vine. 75c.
CELASTRUS Scandens & Orbiculatus (Bitter-sweet). 75c.
WISTARIA Chinensis. \$1.00.
WISTARIA Multijuga—Large clustered type. \$1.00.
WISTARIA Multijuga Rosea—A beautiful pink form. \$3.00.
LONICERA Halliana (Honey-suckle). 35c.

WE have a fine selection of Hybrid Tea or Monthly Roses as well as Climbing and Baby Ramblers, and Perennials, Rock Plants, Fruit Trees.