
Agency Information

AGENCY : FBI
RECORD NUMBER : 124-10284-10028
RECORD SERIES : HQ
AGENCY FILE NUMBER : CR 62-9-39-381, 365, 348

Document Information

ORIGINATOR : FBI
FROM : FISCHER, DONALD G.
TO : DIRECTOR, FBI
TITLE :
DATE : 11/10/1964
PAGES : 24
SUBJECTS :
SMO, GM, REL, ASSOC, ORGANIZED CRIMINAL ACT,
GAMBLING, LOTTERY, NUMBERS OPERATION, FBI INVEST,
CRIME CONDITIONS
DOCUMENT TYPE : PAPER, TEXTUAL DOCUMENT
CLASSIFICATION : Unclassified
RESTRICTIONS : 4
CURRENT STATUS : Redact
DATE OF LAST REVIEW : 05/19/1998
OPENING CRITERIA : INDEFINITE
COMMENTS : INC 2 RPT

PG 92-539

to the Bureau by May 1, 1964.

ADMINISTRATIVE

The Pittsburgh Office is submitting two reports covering crime conditions within the Pittsburgh Division. A report covering crime conditions in West Virginia was submitted on 10/30/63, and this report covers the Western Judicial District of Pennsylvania. Information is reported by counties set forth alphabetically, and information is set forth regarding all counties in the Western District of Pennsylvania, wherein criminal activity is reported.

Information that was developed concerning violations of local, State and Federal laws not within the investigative jurisdiction of the FBI has been disseminated, where appropriate, to the proper agency.

The Pittsburgh Office currently is or has conducted investigation concerning criminal activity mentioned herein which is within FBI investigative jurisdiction.

INFORMANTS

T symbols utilized in this report are the same, where applicable, as those used in previous reports.

OTHER 4

PG T-3 is Trooper PAUL DORNER, Pennsylvania State Police, Bedford, Pa., contacted by SA J. EDWARD KERN.

PG T-5 is PG 604-C, contacted by SA HOBART C. LOVETT.

PG T-6 is PCI contacted by SA J. EDWARD KERN.

PG T-7 is PG 526-C, contacted by SA J. EDWARD KERN.

PG T-8 is PG 695-C, contacted by SA J. EDWARD KERN.

B
COVER PAGE

PG 92-539

PG T-9 is former PCI [REDACTED] contacted by SA RICHARD N. RANDLEMAN.

PG T-11 is PCI [REDACTED] contacted by SA EDWARD T. ZIMMERMAN.

PG T-15 is PG 613-C, contacted by SA OLIVER H. HUNTER, III.

PG T-21 is PG 630-C, contacted by SA ROBERT T. KELLY.

PG T-24 is PG 615-C, contacted by SA THOMAS G. FORSYTH, III.

PG T-25 is PG 621-C, contacted by SA THOMAS G. FORSYTH, III.

PG T-30 is PG 658-C, contacted by SA NORMAN T. THOMPSON.

PG T-31 is PG 665-CTE, contacted by SA W. B. ANDERSON, JR.

PG T-33 is PG 657-CTE, contacted by SA JAMES B. FANNING.

PG T-35 is PG 653-CTE, contacted by SA W. B. ANDERSON, JR.

PG T-36 is PG 620-C, contacted by SA SAMUEL A. MILLER.

PG T-37 is PG 687-C, contacted by SA W. B. ANDERSON, JR.

PG T-39 is PG 661-C, contacted by SA SAMUEL A. MILLER.

PG T-40 is PCI [REDACTED] contacted by SA NORMAN T. THOMPSON.

PG T-46 is PCI [REDACTED] contacted by SA DONALD G. FISCHER.

PG T-48 is PG 650-C, contacted by SA JOHN S. PORTELLA.

OTHER 4

OTHER 4

C
COVER PAGE

PG 92-539

PG T-63 is PG 600-C, contacted by
SA JAMES V. KINNANE.

PG T-66 is PG 605-C, contacted by SA OLIVER
H. HUNTER, III.

PG T-68 is PG 654-C, contacted by SA NORMAN
T. THOMPSON.

PG T-71 is PG 574-C, contacted by SA CHAD A.
JOHN.

PG T-77 is PCI [REDACTED] contacted by
SA J. EDWARD MADVAY.

PG T-81 is PCI [REDACTED] contacted by
SA THOMAS A. MAKI.

PG T-83 is PCI [REDACTED] contacted by
SA SAMUEL A. MILLER.

PG T-85 is PG 609-C, contacted by SA NORMAN
T. THOMPSON.

PG T-86 is PG 608-C, contacted by SA HAROLD
L. STEVENS.

PG T-87 is PG 663-C, contacted by SA ROBERT
A. VOEGE.

PG T-89 is PG 573-C, contacted by SA JOHN S.
PORTELLA.

PG T-94 is NICK VIGNOVIC, contacted by
SA SAMUEL A. MILLER.

PG T-98 is PCI [REDACTED] contacted by
SA CHARLES A. DECKER, JR.

PG T-100 is PCI [REDACTED] contacted by
SA J. EDWARD KERN.

PG T-101 is Corporal THOMAS STERNER, Pennsyl-
vania State Police, Somerset, Pa., contacted by SA
J. EDWARD KERN.

D
COVER PAGE

OTHER 4

OTHER 4

PG 92-539

PG T-103 is PCI [REDACTED] con-
tacted by SA CHAD A. JOHN.

PG T-104 is PCI [REDACTED] con-
tacted by SA SAMUEL A. MILLER.

PG T-105 is PCI [REDACTED], contacted
by SA JOHN R. ACKERLY.

PG T-106 is former PCI [REDACTED] contacted
by SA JAMES A. SWENSON.

PG T-107 is PCI [REDACTED] contacted
by SA JAMES B. FANNING.

PG T-108 is PCI [REDACTED] contacted by
SA NORMAN T. THOMPSON.

OTHER 4

PG T-109 is PCI [REDACTED] contacted by
SA DAMON W. PITCHER.

PG T-110 is former PCI [REDACTED]
contacted by SA THOMAS G. FORSYTH, III.

PG T-111 is PG 685-C, contacted by SA W. B.
ANDERSON, JR.

PG T-112 is PCI [REDACTED] contacted
by SAS M. JAMES KRUSCHKE and SAMUEL A. MILLER.

PG T-113 is former PCI [REDACTED]
contacted by SAS M. JAMES KRUSCHKE and SAMUEL A. MILLER.

PG T-114 is PG 692-C, contacted by SA W. B.
ANDERSON, JR.

PG T-115 is EVERETT R. COTTOM, Security
Officer, U. S. Steel Corp., Homestead, Pa., and a former
Agent of the FBI, contacted by SA THOMAS G. FORSYTH, III,
on May 14, 1963, and by SA SAMUEL A. MILLER on
October 24, 1963.

PG T-116 is PCI [REDACTED] contacted by
SA SAMUEL A. MILLER.

E
COVER PAGE

PG 92-539

PG T-117 is PCI [REDACTED] contacted
by SA M. JAMES KRUSCHKE.

PG T-118 is PCI [REDACTED] contacted by
SA CHAD A. JOHN.

PG T-119 is PCI [REDACTED]
contacted by SA DONALD G. FISCHER.

PG T-120 is Chief of Police EARL MC GILL,
Bedford, Pa., contacted by SA J. EDWARD KERN.

PG T-121 is CARMEN OLIVO, Bartender,
Boulevard Hotel, Logan Boulevard, Altoona, Pa., con-
tacted by SA J. EDWARD KERN.

PG T-122 is PATRICK COLARY, Capital Press,
Duncansville, Pa., contacted by SA J. EDWARD KERN.

OTHER 4

PG T-123 is JAY H. BURNS, 804 North Second
Street, Bellwood, Pa., contacted by SA J. EDWARD
KERN.

PG T-124 is WILLIAM DUERR, Credit Association
of Western Pennsylvania, 701 Commonwealth Annex,
Pittsburgh, Pa., contacted by SA HAROLD L. STEVENS
and SA WILLIAM B. ANDERSON, JR.

PG T-125 is PCI [REDACTED] contacted
by SA HOBART C. LOVETT.

PG T-126 is former PCI [REDACTED]
contacted by SA FRANK H. GEIERMANN.

PG T-127 is PG 596-C, contacted by SA
FRANK H. GEIERMANN.

PG T-128 is PG 690-C, contacted by SA ROBERT
T. KELLY.

F*

COVER PAGE

FEDERAL BUREAU OF INVESTIGATION

100

OFFICE OF ORIGIN PITTSBURGH	OFFICE OF ORIGIN PITTSBURGH	DATE 11/10/64	INVESTIGATIVE PERIOD 4/1/64 - 11/9/64
TITLE OF CASE SAME CONDITIONS IN OTHER DISTRICTS OF PENNSYLVANIA Top Hoodlum Program		REPORT MADE BY DONALD G. FISCHER	TYPED BY DJW
		CHARACTER OF CASE ANTI-RACKETEERING - Pittsburgh	

REFERENCE Report of SA DONALD G. FISCHER, Pittsburgh, 5/2/64.

- P* -

ENCLOSURES TO THE BUREAU (2)

Original and one copy of a letterhead memorandum characterizing informants used in this report.

FILE

PITTSBURGH

at Pittsburgh, Pa. (Allegheny County)

Will prepare a report concerning crime conditions in the Western District of Pennsylvania for submission to the Bureau by 11/10/64.

ALL INFORMATION CONTAINED
 HEREIN IS UNCLASSIFIED 284,655
 DATE 10/13/88 BY SP5Ciloms

1 COPIES MADE DATE 6/15/78 BY
 GWC RE MANNING
 FOR REVIEW AT FBIHQ AND/OR DELIVERY
 TO HSCA RE REQUEST DATED 4/28/78
 (SEE BUFILE 62-117-80)
 DO NOT WRITE IN SPACES BELOW

APPROVED

SPECIAL AGENT IN CHARGE

62-9-39-381
 Bureau (62-9-39) (Travel)
 SA Pittsburgh, Pa.
 Pittsburgh (92-530)

62-9-39-381

PG 92-539

INFORMANTS

T symbols utilized in this report are the same, where applicable, as those used in previous reports.

PG T-5 is PG 604-C, contacted by SA HOBART C. LOVETT.

PG T-6 is [redacted] contacted by SA J. EDWARD KERN, a PCI of the Pittsburgh Office.

PG T-7 is PG 526-C, contacted by SA J. EDWARD KERN.

PG T-9 is former PCI [redacted] contacted by SA JOHN S. HUGHES.

PG T-10 is PG 603-C, contacted by SA JOHN S. HUGHES.

PG T-11 is PG 698-C, contacted by SA EDWARD T. ZIMMERMAN.

PG T-15 is PG 613-C, contacted by SA OLIVER H. HUNTER, III.

PG T-21 is PG 630-C, contacted by SA ROBERT T. KELLY.

PG T-27 is former PCI [redacted] contacted by SA THOMAS G. FORSYTH, III.

PG T-30 is PG 658-C, contacted by SAS NORMAN T. THOMPSON and JOHN R. ACKERLY.

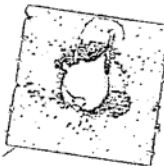
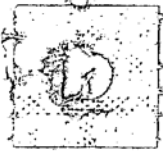
PG T-31 is PG 665-CTE, contacted by SA W. B. ANDERSON, JR.

PG T-33 is PG 657-CTE, contacted by SA JAMES B. FANNING.

PG T-36 is PG 620-C, contacted by SA SAMUEL A. MILLER.

OTHER 4

- C -
COVER PAGE



ANDERSON, JR. PG T-37 is PG 687-C, contacted by SA W. B.

A. MILLER. PG T-39 is PG 661-C, contacted by SA SAMUEL

DONALD G. FISCHER. PG T-46 is PCI [redacted] contacted by SA

PORTELLA. PG T-48 is PG 650-C, contacted by SA JOHN S.

KINNANE. PG T-63 is PG 600-C, contacted by SA JAMESVV.

H. HUNTER, III. PG T-66 is PG 605-C, contacted by SA OLIVER

THOMPSON. PG T-68 is PG 654-C, contacted by SA NORMAN T.

EDWARD MADVAY. PG T-77 is PCI [redacted] contacted by SA J.

A. MILLER. PG T-83 is PCI [redacted] contacted by SA SAMUEL

THOMPSON. PG T-84 is PG 581-C, contacted by SA NORMAN T.

THOMPSON. PG T-85 is PG 609-C, contacted by SA NORMAN T.

L. STEVENS. PG T-86 is PG 608-C, contacted by SA HAROLD

VOEGE. PG T-87 is PG 663-C, contacted by SA ROBERT A.

ORTELLA. PG T-88 is PG 623-C, contacted by SA JOHN S.

PG T-89 is PG 573-C, contacted by SA JOHN S. PORTELLA.

- D -
COVER PAGE

92-539

PG T-93 is PCI [redacted] contacted by
SA SAMUEL A. MILLER.

PG T-94 is PCI [redacted] contacted by
SA SAMUEL A. MILLER.

PG T-100 is PCI [redacted] contacted by
SA J. EDWARD KERN.

PG T-104 is PCI [redacted] contacted
by SA SAMUEL A. MILLER.

PG T-105 is PCI [redacted] contacted by
SA JOHN S. PORTELLA.

PG T-112 is PCI [redacted] by SA M. JAMES
KRUSCHKE.

PG T-114 is PG 692-C, contacted by SA W. B.
ANDERSON, JR.

PG T-116 is PCI [redacted] contacted by
SA SAMUEL A. MILLER.

PG T-117 is PCI [redacted] contacted by
SA M. JAMES KRUSCHKE.

PG T-118 is PCI [redacted] contacted by SA
CHAD A. JOHN.

PG T-119 is PG 725-C, contacted by SA DONALD G.
FISCHER.

PG T-127 is PG 596-C, contacted by SA FRANK H.
GEIERMANN.

PG T-130 is PG 704-CTE, contacted by SA W. B.
ANDERSON, JR.

PG T-131 is PG 715-C, contacted by SA ROBERT
A. VOEGE.

PG T-137 is PCI [redacted] contacted by SA
M. JAMES KRUSCHKE.

- E -
COVER PAGE

PG T-139 is PCI [redacted] contacted by SA SAMUEL A. MILLER.

PG T-140 is PCI [redacted] contacted by SA SAMUEL A. MILLER.

PG T-142 is PG 723-C, contacted by SA EUGENE F. CABLE.

PG T-143 is former PCI [redacted] contacted by SA JAMES V. KINNANE.

PG T-145 is PG 711-C, contacted by SA JAMES V. KINNANE.

PG T-146 is former PCI [redacted] contacted by SA JAMES V. KINNANE.

PG T-148 is PCI [redacted] contacted by SA EUGENE F. CABLE.

PG T-149 is TED ICKES, who requested that his identity be kept confidential, contacted by SA J. EDWARD KERN.

PG T-152 is PG 731-C, contacted by SA ROBERT T. KELLY.

PG T-153 is PCI [redacted] contacted by SA ROBERT T. KELLY.

PG T-154 is HOWARD DUNN, gypsy car dealer, Somerset, Pa., who requested that his identity be kept confidential, contacted by SA J. EDWARD KERN.

PG T-155 is PCI [redacted] contacted by SA EUGENE F. CABLE.

PG T-156 is Dr. THOMAS F. TODD, 2001 McLean St., Aliquippa, Pa., who requested that his identity be kept confidential, contacted by former SA CHARLES A. DECKER, JR.

PG T-157 is PCI [redacted] contacted by SA MARVIN A. REYNOLDS.

- F -
COVER PAGE

PG 92-539

PG T-158 is Trooper JOSEPH VALENTE, Gambling and Vice Squad, Pennsylvania State Police, Beaver Falls, Pa., who requested that his identity be kept confidential, contacted by SA EUGENE F. CABLE.

PG T-159 is Fayette County Detective WILLIAM TULICH, Uniontown, Pa., who requested that his identity be kept confidential, contacted by SA JOHN B. RUCKER, JR. OTHER 4

PG T-160 is PCI [REDACTED] contacted by SA JAMES V. KINNANE.

PG T-161 is PG 683-PC, contacted by SA W. B. ANDERSON, JR.

PG T-162 is PCI [REDACTED] contacted by SAS JOHN S. PORTELLA and FRANK E. ALLISON.

PG T-163 is PG 722-PC, contacted by SA JAMES B. FANNING.

PG T-164 is PCI [REDACTED] contacted by SA NORMAN T. THOMPSON.

PG T-165 is PCI [REDACTED] contacted by SA ROBERT A. VOEGE.

PG T-166 is LOGAN C. EWING, 217 E. 10th Ave., City Councilman, Homestead, Pa., who requested that his identity be kept confidential, contacted by SA W. B. ANDERSON, JR.

PG T-167 is PCI [REDACTED] contacted by SA WILLIAM J. COGGIN.

PG T-168 is Mrs. SARAH CALIG, owner of the Monroeville Beer Distributing Company, Miracle Mile Shopping Center, Monroeville, Pa., who requested that her identity be kept confidential, contacted by SA SAMUEL A. MILLER.

PG T-169 is PG 699-C, contacted by SA NORMAN T. THOMPSON.

- G -
COVER PAGE

PG 92-539

OTHER 4

PG T-170 is PG 679-C, contacted by SA CLIVE
G. MATTHEWS.

PG T-171 is PG 724-C, contacted by SA WILLIAM
J. COGGIN.

PG T-172 is MAYNARD L. BAKER, Proprietor, La Jose
Hotel, La Jose, Pa., who requested that his identity be
kept confidential, contacted by SA JOHN S. HUGHES.

PG 173-C is PCI , contacted by
SA ROBERT T. KELLY.

- H* -
COVER PAGE