

Historic, archived document

Do not assume content reflects current scientific knowledge, policies, or practices.

62.25

1925

LIBRARY
FEB 14 1925
U.S. Department of Agriculture

New
Illustrated
and
Descriptive
Catalog

Jonathan
Apples
(See Page 6)



Fruit and Ornamental

Trees, Small Fruit Plants

Shrubs, Vines and Roses



THE KRIDER NURSERIES

(INCORPORATED)

Capital Stock, \$100,000.00

MIDDLEBURY, INDIANA

225 ACRES—MOST COMPLETE LINE IN NORTHERN INDIANA

INDEX

	Page		Page
Althea	20	Larkspur, see Perennials	
Apples	4, 5 and 6	Landscape Dept.	18
Apricots	10	Maple	19
Almond, Flowering	20	Mulberries	19
Aralia	20	Mahonia	22
Arbor-Vitae	24, 30	Norway Spruce	24, 31
Ash	19	Ornamental Shrubs	20
Asparagus	17	Peaches	8, 9 and 10
Azalia	20, 24	Pears	7
Baby Rambler Roses	29	Plums	12
Barberry	24	Perennials	25
Beech	19	Poplar	19
Birch	19	Prunus Pissardi	22
Blackberry	16	Privet	24
Boston Ivy	25	Peonies	27
Catalpa	19	Pines	31
Cherries, Sour	11	Philadelphus	22
Cherries, Sweet	11	Quinces	13
Clematis	20	Raspberries, Black	16
Calycanthus	20	Raspberries, Red	16
Crab Apples	6	Raspberries, Yellow	16
Currants	13	Rhubarb	17
Cornus	20	Rhodotypos	22
Climbing Roses	29	Roses	28
Dahlia	26	Retinispora	31
Deutzia	21	Rosa Rugosa	22
Elder, Golden	22	Rhododendrons	24
Evergreens	30	Strawberry, Summer	14, 15
Elm	19	Strawberry, Everbearing	15
Elaeagnus	21	Shrubs, Ornamental	20
Euonymus	21	Shade Trees	19
Firs	30	Spirea, 12 Varieties	23
Forsythia	21	Spruce	24, 31
General Information	3	Snowball	23
Gooseberries	15	Snowberry	23
Grapes	17	Sumac	22
Guarantee	13	Syringa	22
Hemlock	31	Special Bargain Offer	2
Honeysuckle, Bush	21	Tulip Bulbs, see Perennials	25
Honeysuckle, Vining	25	Tulip Tree	19
Hedges	24	Tamarix	23
Hyacinths, See Perennials	25	Terms	3
Hydrangea	21	Umbrella Tree	19
Introductory	3	Viburnum	23
Ivy	25	Vines	25
Junipers	31	Willow	19
Japan Quince	21	Wisteria	25
Kerria Japonica	21	Weigela	21
Lilacs	23	Xanthorrhiza	23

Special Bargain Offer

We make you the best offer in these specials that we or any other have ever made you. We sold hundreds of these specials last Spring. As many want to plant something each Spring and do not know just what, we fix up these specials to please, with the best varieties of fruits and flowers. Many say they are better than if they selected them themselves. Let us have your order with one or more of these specials, as you get two for one here.

Remember, at these prices the selection of varieties must be left entirely with us. For your selection see prices elsewhere given in catalog on what you want.

NO. 1. \$10.00.

- 15 Apple trees, 3 to 4 feet.
- 15 Peach trees, 2 to 3 feet.
- 3 Cherry trees, 3 to 4 feet.
- 3 Pear trees, 3 to 4 feet.
- 3 Plum trees, 3 to 4 feet.
- 1 Quince tree, 2 to 3 feet.

40 trees \$10.00

NO. 2. \$5.00.

- 7 Apple trees, 3 to 4 feet.
- 7 Peach trees, 2 to 3 feet.
- 1 Cherry tree, 3 to 4 feet.
- 1 Quince tree, 2 to 3 feet.
- 2 Pear trees, 3 to 4 feet.
- 1 Rose.

18 trees and 1 rose \$5.00



FOREWORD



OR more than twenty years, or ever since the Krider Nurseries were established, it has been our wish that we might show our customers the parent garden of the flowering and fruiting stock that is being sent out under our labels.

Such a trip being impractical, we are doing the next best thing; we are sending you fac-similes of the fruit and flowers we grow. We are presenting you a catalog which not only brings form and color to your vision, but those more subtle qualities—the appetizing plumpness of the apple, the luscious quality of the peach, the juiciness of the berry, the glorious coloring of the rose. In all respects save perfume—and by the grace of imagination even that is conveyed to you through its pages—you have in this catalog a literal presentation of what your garden and orchard may produce from our stock.

We offer you sound, healthy stock, potential in bloom and fruitage, and by reason of special training and long experience, we can aid you in your choice. Yours, however, is the privilege of selecting, planting, caring for and garnering that most delightful and responsible of vocations.

Our greenhouse and propagating department is in charge of an expert Hollander who has had years of experience in budding and grafting evergreens, roses, fruit trees, etc. Our packing, storage and shipping facilities are the best in the state and equal to any modern equipment throughout the country. Our frost-proof packing house, covering nearly an acre of ground, and into which runs our private railroad siding that connects with the New York Central railroad, enables us to handle our entire output under cover at all seasons of the year.

Order abundantly today, with eye to future needs, that you and yours may harvest with both pleasure and profit.

THE KRIDER NURSERIES, INC.

General Information

LOCATION. Our Goshen plant is located 5 miles northeast of Goshen near the Michigan branch of the L. S. & M. S. Ry. We have 96½ acres of land at this packing house.

Our Middlebury branch is located within the corporate limits of the town of Middlebury and consists of 128½ acres. All shipments will be made from our new plant at Middlebury, Indiana. All mail should be addressed to Middlebury, Indiana.

ORDERING. In ordering be sure to state how you want your orders sent and give your express office. Order early. On all orders of one dollar or more received before March 10, we will add a Rambler Rose as a premium, providing you mention it in your order.

SUBSTITUTION. We do not substitute unless requested. When you place your order here you get what you want or money back.

REFERENCES. First State Bank, Middlebury, Indiana; Elkhart County Trust Company, Goshen, Indiana, or any bank or business house in Elkhart County.

SHIPMENT. We commence to ship about March 10, weather being favorable and shipping season lasts until May 25th. Will ship order any week you designate in your

letter, weather being favorable. We have every means at hand to have your stock reach you in the best condition.

TERMS. Cash before order is shipped. We will book orders when one-fourth cash accompanies the order, balance to be paid before stock is shipped.

CLAIMS. All claims for shortage must be made inside of ten days after goods are received. If stock is not satisfactory complaint must be made at once. No attention will be paid to claims received months after the goods have been received. We sell 50 at 100 rate; 500 at 1000 rate.

PARCEL POST. Strawberry plants can be sent by Parcel Post. If you wish them sent in this manner add 15c per 100, or we can send them Parcel Post collect, whichever is preferred. Rural carriers collect postage and it is cheaper than express and brings plants to your door.

REMITTANCES. Make same by express money order, post office order, draft or registered letter. Checks from responsible persons are also taken.

CONCLUSION. We offer our customers three essentials necessary to success and embodied in stock grown by us. 1st, extreme hardiness; 2nd, power to bear early; 3rd, true to name. Think it over.

FRUIT DEPARTMENT

Apples

Apples should be planted in early Spring or late Fall. We recommend April and May for Spring planting; October and November for Fall planting throughout Indiana. The varieties we are offering cover the season from early to late and are listed in their order of ripening. All of the varieties have been tested and we know that they will prove satisfactory for planting almost anywhere in the South.

Almost any soil will suit the trees; however, best results will be obtained by planting in a rich, loamy soil. Clean cultivation, careful pruning and spraying will pay big dividends. Trees should be planted thirty feet apart each way, and for the first year or two the trunks of the trees should be protected from rabbits.

Note. We propagate our Apples from cions cut from trees that are bearing fruit. Many nurseries use cions from the nursery rows and trees raised in this manner will not bear fruit until very old. Be sure you get trees that have bearing wood grafted on them.

Apples are going to be valuable in the near future, they bring a handsome price now and when the old orchards are



Yellow Transparent Apple.

gone they will nearly double the price received now and a good Apple orchard will be more valuable than an orange grove. True, some of us will not live to reap the benefits, but our children can not have a greater inheritance than a thrifty, bearing orchard, which will guarantee them a fine income annually.

We grow forty varieties of Apples, each one having certain characteristics which render them valuable. Those marked with an asterisk (*) are such as are most valuable in Indiana.

We can furnish Dwarf Apples at the same price as standard.

PRICE OF APPLES AND CRAB APPLES.

		Each	10	100
No. 1, 3-yr.,	5 to 7 ft.	\$0.75	\$7.00	\$60.00
No. 1, 2-yr.,	4 to 6 ft.60	5.00	40.00
No. 1, 1-yr.,	3 to 4 ft.50	4.00	30.00



Stayman's Winesap Apple.

Summer Varieties

BENONI. Medium; roundish; pale yellow, shaded with crimson, juicy, tender, sub-acid. August.

***EARLY HARVEST.** Tree healthy, vigorous and a good bearer. Fruit medium size, nearly round, somewhat flattened; surface smooth, clear waxy yellow, rarely blushed; flesh tender, juicy, acid to sub-acid, flavor good. July.

GOLDEN SWEET. Large, pale yellow, very sweet and good; good bearer; free. August.

***LIVELAND (Liveland Raspberry).** Color orange yellow, striped, splashed and shaded with red, showing gray dots through the color, flesh light yellow, often stained with red; fine, tender, juicy; core medium open; flavor sub-acid, good.

***RED ASTRACHAN.** Tree vigorous, upright, hardy and productive. Fruit medium to large; surface smooth, marbled and striped on greenish yellow; flavor acid.

***RED JUNE.** Medium, red; flesh white, tender; juicy, good flavor. Abundant bearer. Last of June.

***YELLOW TRANSPARENT.** Medium, white, changing to lemon-yellow, smooth waxy surface; of good quality, with crisp flesh; very early, and, for an early Apple, an unusually good keeper. Valuable for market. July and August.



Northwestern Greening Apple.

THRIFTY TREES OR WEAK ONES, WHICH WILL YOU BUY?



DELICIOUS - The Grandest Fancy Apple yet Produced.

Autumn Varieties

CHENANGO STRAWBERRY (Sherwood's Favorite). Large, roundish, bright red and yellow; very beautiful and a pleasant Apple. A good and early bearer. September and October.

***DUCHESS OF OLDENBURG.** The best known of the Russian Apples. Succeeds everywhere, even in the Northwest where most varieties fail, and yields well in all sections. Fruit large, rounded, striped with red and yellow; tender, juicy, of the best quality for cooking and esteemed for dessert. Trees bear young, abundantly; very hardy. August and September.

FAMEUSE (Snow Apple). One of our finest dessert fruits. Of medium size, smooth, regular, deep crimson; tender, melting, delightful flavor. The tree is vigorous and hardy, succeeds especially well in the North. November to January.

FALL PIPPIN. Large, and when fully ripe, a beautiful yellow. Flesh is tender, rich and of good quality; especially good for culinary purposes. Tree is hardy and long-lived. September to December. 10c extra.

***MAIDEN'S BLUSH.** Of uniformly large size, smooth, round, beautifully flushed with red on creamy yellow ground; flesh tender, of pleasant, but not high flavor. A good market sort because of its attractiveness and the tree's heavy crops. September and October.

***WEALTHY.** Hardy, thrifty and good bearer. Fruit medium, roundish, smooth, mostly covered with dark red; flesh white, fine grained, juicy; sub-acid; good quality. January. For market, dessert and cooking. See cut page 6.

Winter Varieties

***BLACK BEN.** Fall. A beautiful Apple resembling Jonathan although larger and a deeper red; good quality and a good keeper. Tree bears young and carries full crops. This variety often bears at four years of age.

BEN DAVIS (American). Late; fruit round, medium to large; skin yellow, with red stripes; flesh white, tender, juicy, sub-acid. Highly valued market variety.

***BELLFLOWER, YELLOW.** Large, yellow; with blush cheek; very tender, juicy, sub-acid. In use all Winter. Very valuable. A moderate grower and good bearer.

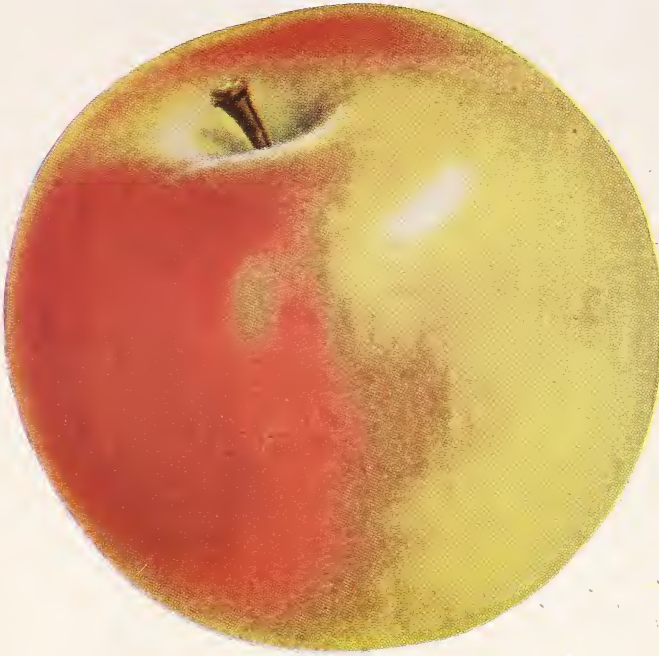
***BALDWIN.** What the Bartlett pear is to pears the Baldwin is to Apples for the eastern and middle states. No variety yields larger crops or bears shipment better, or is more attractive in color, size and shape than the Baldwin. It is esteemed as an eating Apple, and for cooking. For commercial orchard it can be relied upon. Large, bright red, crisp, juicy and rich; tree vigorous, upright and productive. In New England, New York, Ontario and Michigan, this is one of the most popular and profitable sorts for table or market. Keeps until April.

***DELICIOUS.** This Apple is all that the name suggests. It originated in the state of Iowa, and has made its way to every section of the country. It is a splendid Apple everywhere, and the peculiar hardness of the tree makes it an especially valuable variety to grow. Large, with surface almost covered with a brilliant, beautiful dark red, blending to golden yellow at the blossom end. In quality it is unsurpassed. In flavor it is sweet, slightly touched with acid, but only enough to make it all the more pleasing, with aroma delightfully fragrant. Flesh fine grained, crisp, juicy, melting, and withal delicious. In keeping qualities it ranks with the best, coming out of storage in March and April in perfect condition. It is one of the strongest, hardiest, and most vigorous growers. Rapidly taking first rank both for commercial and home orchards. (See cut).

***GRIMES GOLDEN.** A medium to large Apple of beautiful golden color, and of the very highest quality. Hardy and vigorous. A quality Apple in every way. Can be packed in boxes for fanciest trade. Brings highest prices. January to April.

GANO. An improved Ben Davis, adding to the good qualities of that variety a much handsomer fruit of deep, dark red, that brings a ready sale in market. December to March.

GOLDEN RUSSET. Of medium size, round-ovate; clear golden russet, with slight blush; tender, crisp, juicy and high-flavored. Tree robust and hardy, bearing large crops. November to April. 10c extra.



Winter Banana Apple.

WINTER VARIETIES—Continued.

HUBBARDSTON NONESUCH. Large, handsome, yellow, overlaid with red; tender fleshed, with distinct flavor. Strong grower and heavy bearer. November to January.

***JONATHAN.** Late. Fruit of medium size, round, oblate; skin yellow, nearly covered with red; flesh white stained, very juicy and tender, of mild sub-acid flavor. Quality very good. Excellent market sort. One of the best, see cover page.

KING. Very large, fairly hardy, round, oblate, yellow striped and clouded; an abundant annual bearer. December to April.

***MAMMOTH BLACK TWIG.** Extra large size, round, skin smooth, yellowish, covered with deep red, the general effect being dark red; flesh tender, tinged with yellow, crisp, sub-acid, aromatic, of excellent quality in every way. Tree vigorous, healthy and bears when quite young; very prolific.

***MCINTOSH RED.** Large, dark red; flesh white, very tender, splendid quality. A prolific bearer, but inclined to drop. November to February. 10c extra.

***NORTHERN SPY.** Crisp, tender, high quality; fine shaped beautiful coloring; red, usually striped; sub-acid; very productive. November to March. 10c extra.

***NORTHWESTERN GREENING.** The best of the Greenings. Tree a splendid, vigorous grower; hardy; fruit large, green, becoming yellowish green when ripe; flesh yellow, fine grained and firm; flavor a good sub-acid. Very smooth and attractive; second only to the Delicious as an all-round late market Apple. December to April.

PEWAUKEE. Large, round-oblate, bright yellow, flushed with dull red; white, tender flesh of good quality; hardy and robust. January to May.

RAMBO. Greenish yellow, mottled and striped red. An old well-known sort of good quality. A favorite in many localities. Rambo has served long and faithfully as many people's ideal of what a delicious Apple should be. October to January.

ROME BEAUTY. Uniformly large, smooth; shaded and striped with bright red. Bears each year and is a splendid commercial variety as well as for home use. Flesh tender, crisp. Should be planted commercially. December to March.

***RHODE ISLAND GREENING.** Large; green turning yellow, becoming dull blush when ripe; flesh yellow, fine grained, tender, with rich, rather acid flavor. Tree vigorous, spreading and productive. November to March. 10c extra.

***SPITZENBURG (Esopus).** Medium to large; deep red, high flavored; valuable for commercial purposes. November to April.

STARK. Large; red; juicy; sub-acid; mild flavor. November to March.

***STAYMAN'S WINESAP.** A favorite for all purposes. Medium size, conical; red on yellow; flesh fine, crisp, high flavored. November to May. (See cut on page 4).

***TOLMAN SWEET.** Medium size, pale yellow, tinged with red; firm, rich, sweet. November to April.

***WAGENER.** Deep red; medium to large; flesh firm; sub-acid, well flavored. Bears young and yields good annual crops. December to March. More suitable for southern than northern Michigan.

WOLF RIVER. Very large; red on yellow; strong grower, good bearer. October to January.

***WINTER BANANA.** Large, very showy, roundish; deep yellow with red cheek. November till Spring. Has a banana perfume; tender and delicious.

YORK IMPERIAL. Tree moderate grower and productive, fruit large, lop-sided; surface smooth; color mixed bright red on yellow ground; flesh yellowish, tender, juicy, flavor mild sub-acid; quality very good; for market, table, kitchen. November till Spring.

Crab Apples

Prices of all varieties same as standard Apples.

For preserves, jelly, flavoring, canning, Crab Apples are very good. Also their tartness is agreeable once in a while when they are eaten fresh. The trees themselves are beautiful, and when loaded with the bright colored fruit, are striking. They are an ornament to any grounds and look well beside the finest ornamentals.

HYSLOP. Large; dark crimson, with bloom; very showy. Tree very hardy; late.

TRANSCENDENT. The largest Crab Apple. Red; showy; excellent. September to October.

***RED SIBERIAN.** Large, red-striped. Fine for cooking; very hardy.

***YELLOW SIBERIAN.** Beautiful glossy yellow, shaded bright red; good size, mild, clear, tart. October.

WE PROPAGATE FROM BEARING TREES.
THEY BEAR YOUNGER.



Wealthy Apple.

Pears

The soil should be rich and well cultivated. They should be pruned every year, dwarfs especially. Dwarfs should have low heads and be trained in a pyramidal form, one-half of the previous season's growth being cut off each Spring.

Pears succeed best on rather steep hillsides. Plant Pears midway on the slope, putting something else on the upper and lower sections. Cultivate sparingly, so as to induce a very slow growth, and let blue grass take the land before the trees come into fruitage. When blight appears, cut off the affected parts at once and burn them; cut six inches below the lowest blight, to insure taking all infected sap.

PRICE OF PEAR TREES.

	Each	10	100
No. 1, 3-yr., 5 to 7 ft.	\$1.50	\$14.00	\$125.00
No. 1, 2-yr., 4 to 6 ft.	1.25	11.00	100.00
No. 1, 1-yr., 3 to 4 ft.	1.00	9.00	80.00

Early Varieties

BARTLETT. Large size, with beautiful blush next to the sun; buttery, very juicy and high flavored; bears early. August and September.

CLAPP'S FAVORITE. Large obovate, ovate; skin thin, pale yellow, marked with crimson and fawn colored dots, flesh white, fine grained, juicy, buttery, rich, melting and sweet. Very vigorous, upright grower. August and early September.

KOONCE. Medium to large, very handsome; yellow, one side covered with bright red; flesh juicy, sweet, spicy, good; very earliest. Trees very vigorous, hardy and productive. August.

LE CONTE. Tree very vigorous and productive, fruit large, skin smooth and pale yellow; quality fair; ripens about with Bartlett.

MANNING ELIZABETH. Medium; yellow, red cheek; juicy, melting. No other Pear less subject to blight.

WILDER EARLY. One of the very earliest Pears. Size medium, greenish yellow, with a brownish red cheek and numerous dots; flesh white, fine grained, melting, excellent. Always find a ready sale in market. Largely grown by commercial orchardists. Tree bears good crops early and annually. September and December.

SECKEL. Small, short pear-form; yellowish brown, with russet-red cheek; rich, juicy and melting, with a distinct flavor. August.

FLEMISH BEAUTY. Large; greenish yellow, russeted; sweet and rich, excellent flavor; productive. July.

HOWELL. A fine large Pear, sweet and melting; pale yellow, with a red cheek and patches of russet. June and July.

BEURRE D'ANJOU. Rather large, obtuse form; greenish yellow; dull red cheek; rich, melting and buttery. A splendid Pear and a great favorite of all who grow it. Succeeds best as a dwarf. October.

TYSON. Medium or large; bright yellow, with a reddish brown, softly shaded cheek, sometimes russeted; flesh of fine texture, buttery, very melting, juicy; flavor nearly sweet, aromatic, slightly perfumed, excellent. August.

MACKLEROY. This wonderful Pear was brought to Franklin County, Tenn., by Mr.

Davis Mackleroy, from South Carolina, over one hundred years ago (he was the first settler in this county). The tree has not failed to bear a single crop in its history. Ripens here about June 15. The tree is still bearing.



Bartlett Pear.

Winter Pears

LAWRENCE. Medium; short; pear-shaped; pale yellow; rich, juicy and excellent. Early Winter.

VICAR OF WAKEFIELD. Large; long pyriform; pale green. Keeps well. DUCHESS. Medium; yellow with some russet; rich, juicy and very good. Season, October to November.

LINCOLN CORELESS. Originated in Lincoln County, Tenn. Fruit very large, handsome appearance, good quality and very few, if any, seeds. Almost clear of core and seeds, whence its name. One of the best keepers among Winter Pears. Golden yellow; tree a good grower and very productive. Has never been known to blight.

KIEFFER'S HYBRID. Originated near Philadelphia. Supposed to be a seedling of a Chinese Sand Pear crossed with the Bartlett. Size large, very handsome; skin yellow with a bright vermilion cheek; very juicy, with a musky aroma; quality good when ripened to perfection. Rather coarse grained, but one of the best Pears for canning or preserving. A very young and prolific bearer. As near blight-proof as a Pear can be called.

GARBER. Equally as hardy as Le Conte or Kieffer; of same class of Pears. The growth and appearance are very much like Kieffer; ripens one month sooner and of better quality.

MAGNOLIA. Origin, South Georgia. Large to very large, broad to roundish pyriform; surface smooth, yellowish russet, tinged with red and brown on the sunny side; dots numerous, irregular; flesh white, crisp, tender, juicy, mild sub-acid; quality good. Valuable for canning and preserving. Season three or four weeks later than the Kieffer. Very valuable on account of its lateness, coming after the Kieffer is gone. It belongs to the Oriental class of Pears, and is equal in quality to the best of that class. Being the largest and latest of the Oriental class its value is apparent. A prolific bearer; a thrifty, dwarfish grower.



Seckel Pear.



Elberta Peaches.
Standard for Size and Beauty.

Peaches

The Peach holds a place second only to the apple in the United States. It ripens over a long period and with proper selection of varieties a succession of fruit may be had throughout the Summer and early Fall. In a general way it may be said that the standard varieties of Peaches have a wider range of adaptability than the majority of apples and thrive on thinner soils; for example: Elberta is the leading variety in all the Peach growing sections of the country—but no single variety of apple tree occupies the same position in its class as does Elberta. This fact is ample proof of the adaptability of the Peach.

Paradichlorobenzine. A sure cure for the peach borer. This remedy can be purchased from your druggist. If applied in September the following directions should be followed.

Remove the dirt from about the trees in a circle of 12-inch radius, apply paradichlorobenzine in a circle about 4 inches from tree using a tablespoonful to a 5-year tree, cover by mounding the dirt about the tree. The gas resulting from this preparation is a sure cure for the borer and will prolong the life of a peach tree 5 years.

PRICE OF PEACH TREES.

	Each	10	100
No. 1, 4 to 6 ft.	\$0.55	\$5.00	\$40.00
No. 2, 3 to 4 ft.40	3.50	25.00
No. 3, 2 to 3 ft.25	2.20	20.00

ALEXANDER. One of the earliest Peaches. Fruit medium size, nearly covered with crimson; flesh white and good; valuable market variety South; bears very young. June.

ADMIRAL DEWEY. We consider this the most valuable early Peach yet introduced. It has all the grand qualities of the Triumph, without its defects; it ripens with the Triumph, is an early and abundant bearer, a vigorous and symmetrical grower, with hardy wood, and a perfect freestone, with a small stone. Flesh of uniform yellow to the stone and of excellent quality, round, very firm; color beautiful yellow ground, with lively red on the sunny side; as large as the Triumph and is an excellent shipper. No one can afford to be without this new variety.

BILYEU. Large; nearly covered with dark red; flesh white, rich, juicy and firm. A good shipper; rather late. Middle to last of October.

BELLE OF GEORGIA. Very large; skin white, with red cheek; flesh white, firm and of excellent flavor; the fruit is uniformly large and showy; prolific. Chinese Cling seedling. Free.

CHINESE CLING. Large; skin transparent cream color, with marble of red next the sun; flesh creamy white; juicy and melting. July 25.

CHINESE FREE. Seedling of Chinese Cling; size large, roundish, oblong; skin white, with red cheek; flesh red, firm and well flavored; desirable for market. Ripens with Chinese Cling.

CAPTAIN EDE. A large freestone Peach—a seedling of Chinese Cling. Originated in Southern Illinois. Very prolific and hardy; a large, beautifully colored yellow-fleshed Peach of finest quality, ripening with Early Crawford.

CHAMPION. A Western Peach of very large size and good quality, also noticeable for the regularity of its bearing. Skin is of a rich creamy white, with a red cheek; flesh creamy white, sweet and delicious, rich and juicy. A most profitable market Peach. July 20.



J. H. Hale. Equal to Elberta in Beauty. Superior in Quality.



Carman. The Most Profitable Peach for the Planter.

PEACHES—Continued

CARMAN. In this new, hardy, rot-proof Peach, ripening at the same time as Rivers, and yet almost as large and fine as the Elberta itself, we have a Peach of great market value; a large, roundish Peach, with pale yellow skin, red blush on sunny side; white flesh, tender and melting; rich, sweet and superior flavor; by far the finest of any Peach ripening ahead of the Mountain Rose. A big, early, yellow-skinned Peach of high quality is sure to be in great demand. June 20.

CROSBY. Originated near Billerica, Mass., and noted on account of its hardiness. Fruit medium size, roundish, slightly flattened, with a distinct seam; color bright orange-yellow, with a very bright red cheek, very handsome; flesh yellow, mild and pleasant. August 1.

CRAWFORD'S LATE. Large, yellow, with red cheek; fine quality; very popular old variety for market and canning purposes. An old standby which always brings good prices in market, and always in demand. Freestone. August 10.

CRAWFORD'S EARLY. Large, oblong; skin yellow, with red cheek; flesh yellow, melting, sweet and rich. July 10.

FITZGERALD. Freestone. An improved Early Crawford, being fully equal to it in size, quality and color. The tree commences bearing young, is productive and one of the hardiest. Fruit large, brilliant color, bright yellow, suffused with red; flesh deep yellow, best quality. Early September.

ELBERTA. Large; yellow with red cheek; flesh yellow, firm, juicy, of high quality. Exceedingly prolific, sure

bearer and hardy. Is doing well in all Peach sections North and South. One of the leading market varieties. August 1.

J. H. HALE. Originated by J. H. Hale, of Georgia, and is heralded throughout that section as one of the greatest Peaches ever discovered. The tree is a very strong and vigorous grower, having much the appearance of the Elberta. The fruit is of a deep golden color, overspread with bright red; has a smooth thick skin and compares very favorably with the Elberta in shape. The flesh is firm, fine grained, and deep yellow in color.

HEATH CLING. Large, oblong, white, slightly tinged with red in the sun. Fruit tender, rich, melting, luscious. September 15.

OLDMIXON. Cling. One of the old standard sorts. Strong, upright grower, needing heavy annual shortening. Fruit large, round, somewhat elongated. Flesh firm and of good quality. August.

SNEED (S. C.). Fruit medium to large, greenish white, blush on sunny side; juicy and good. July. Not reliable North, though desirable as a very early bearer.

TRIUMPH. Freestone. Earliest yellow fleshed, with good eating and shipping qualities. Sure and abundant bearer; strong, vigorous grower. Fruit good size, yellow, with red and crimson cheek.

WONDERFUL. Freestone. Originated in New Jersey. Very large, yellow with red cheek; flesh yellow, highly flavored and firm; bright red at the pit, which is small and parts freely from the flesh. Good keeper. October.

PEACHES—Continued

MATTHEW'S BEAUTY. Originated in Georgia; extra large in size, some specimens having weighed 17 ounces; color yellow, with a faint blush next the sun; clear freestone; very showy, and is one of the fine southern market Peaches following Emma. It is thought to be of the Smock strain, crossed with the Elberta. Ripe August 20.

SALWAY. A large, late yellow freestone, of English origin; handsomely mottled, with a brownish red cheek; flesh deep yellow, juicy, melting, rich; very productive; growing more and more in favor with the orchardist See cut.

IMPROVED GOLD DROP. The almost translucent golden colored flesh of this Peach renders it exceedingly attractive in market. The tree is hardy, bears early and profitably. Late September.

Krider's Latest Japan Dream

This is the earliest freestone Peach grown in Indiana. Very sweet, tender and excellent flavor; ripens before Champion. Brought to northern Indiana by Mr. D. A. Davis. We only have a limited number and offer them at 75c each; 5 for \$3.50. Not more than 5 to a customer.



Salway Peach.

Apricot Trees

Ripening as it does between Cherries and Peaches, usually about the month before the early peaches, the Apricot is a most welcome fruit, both tempting and delicious. No garden should be without a few trees. In addition to its value as fresh fruit it is a superior fruit for canning and drying, vast quantities being used for these purposes every year. There is always a market for Apricots at good prices, and the planter need have no fear of over production.

PRICES OF ALL VARIETIES OF APRICOT TREES.

	Each	Doz.
Largest size, 2-yr., 4 to 5 ft.	\$1.50	\$16.00
Medium size, 2-yr., 3 to 4 ft.	1.25	12.00

ALEXANDER. Russian, an immense bearer. Fruit large, oblong, yellow, flecked with red; sweet and delicious.

BUDD. Russian. Large, white with red cheek; sweet and juicy; strong grower, good bearer. Late.

GIBB. Russian. Medium, yellow, sub-acid, rich and juicy, the best early sort.

MOORPARK. One of the largest and finest Apricots. Yellow with red cheek. Flesh orange, sweet, juicy and rich; parts from the stone. Very productive.

ROYAL. Large, roundish oval; pale orange with faintly tinged red cheek; flesh yellow, firm, sweet, highly flavored, slightly sub-acid and good quality, ripens a week earlier than Moorpark; a good market variety.

SUPERB. Russian. Medium, roundish oval, smooth, light salmon with numerous red or russet dots, flesh yellow, firm, sub-acid and good; tree hardy and productive; middle of July.



Moorpark Apricot.

If you are not sure what varieties will do well in your section, write us; we are always glad to give the benefit of our experience in selecting varieties that will do well.



Bing Cherries.

Cherries

In planting a Cherry orchard care should be taken not to plant the trees too close together; select a dry soil for the Cherry, as a rule, although it is so hardy a tree that it will thrive in a great variety of soils, yet a good sandy, or gravelly loam is best. Use same care in planting as other trees.

Orchardists are resorting more and more to the planting of varieties of Cherries that are strong pollenizers. Experience seems to demonstrate that such varieties as Black Tartarian, Black Republican, and Long Stemmed Waterhouse, are the best varieties to use for this purpose. Usually about one in every ten trees has proven to be the right proportion to use of these pollenizers.

PRICES ON SOUR AND SWEET CHERRIES.

	Each	10	100
First Class, 5 to 7 ft., $\frac{3}{4}$ to 1 inch	\$1.50	\$12.50	\$100.00
Second Class, 4 to 5 ft., $\frac{1}{2}$ to $\frac{5}{8}$ inch	1.25	10.00	90.00
Third Class, 3 to 4 ft., $\frac{3}{8}$ to $\frac{1}{2}$ inch90	8.00	70.00

Sweet Varieties

BING. This grand new black Cherry was originated by Seth Luelling, of Milwaukee, Ore. Almost as large again as the Black Republican; flesh very solid, flavor of the highest quality; tree thrifty, upright grower, very hardy and productive; a fine shipping and market variety. First of July.

BLACK TARTARIAN. Very large, bright, glossy black; half tender, juicy, rich and fine. Tree a rapid grower and good bearer. Last of June and first of July.

GOVERNOR WOOD. Large; light yellow and bright red; nearly tender, juicy, sweet, rich and delicious. Tree vigorous and productive. Middle to last of June.

WINDSOR. The fruit is large, flesh remarkably firm, sweet and of fine quality. Tree hardy and prolific. July 1st. Best late Sweet Cherry grown.

Duke and Morello (Sour)

DYEHOUSE. This variety partakes both of the Morello and Duke wood and fruit. A very early and sure bearer; ripens a week before Early Richmond, is of better quality and productive. Free. May and June.

EARLY RICHMOND. Everywhere the most popular. Tree strong, thrifty grower, making a large, symmetrical head; fruit medium size, dark red, melting, juicy; sprightly acid flavor and especially valuable for cooking purposes; tree an early and abundant bearer. Season last of May and first of June.

LARGE MONTMORENCY. A fine, large, light red Cherry of the Richmond class, but larger and more upright grower, equally hardy and productive. Second only to Early Richmond in value. Ripens ten days later.



Large Montmorency Cherries.



Burbank Plums.

Plums

The Plum delights in a cool, not too dry situation, and good rich soil. Plant trees 10 to 15 feet apart, in rows. The varieties we offer have been thoroughly tested, and are standbys. These may be relied upon to furnish crops of this profitable and delicious fruit.

Again we wish to impress upon you that Plums should be propagated from bearing trees, to give best results. We have the kind that will bear good crops. Guaranteed to be buds from bearing trees.

PRICE OF PLUM TREES.

	Each	10	100
No. 1, 2-yr., 4 to 6 ft.	\$1.50	\$12.50	\$100.00
No. 2, 2-yr., 3 to 4 ft.	1.00	9.00	80.00

European Varieties

- BLUE DAMSON.** Small, dark purple; much used for preserves; productive. September.
- BRADSHAW.** Very large, dark violet red. Flesh yellow, juicy; good quality. August.
- GERMAN PRUNE.** Medium size; purplish blue; rich, juicy and of high flavor; tree vigorous and productive.
- GREEN GAGE.** A fine, handsome Plum of exceptionally large size. Very desirable in many ways; for home use or market. Fruit greenish in color.
- GUEII.** Large bluish purple; flesh yellowish green, rather coarse; sweet, pleasant. One of the best market varieties. September.
- IMPERIAL GAGE.** Large, pale green, juicy, sweet, rich and excellent. August.
- LOMBARD.** Medium; violet-red; juicy, pleasant; adheres to stone; valuable market sort; hardy. productive.
- MONARCH.** Fruit dark purple, covered with a thin bloom; large size specimens measuring six inches in circumference; flesh pale greenish yellow, parting freely from the stone; juicy, with a pleasant flavor. A leading market sort, Vigorous grower. September.
- MOORE'S ARCTIC.** Small, purplish black, juicy, sweet, immense bearer; one of the hardest in bud and bloom. September.
- REINE CLAUDE.** Small; yellow-green; flesh pale green, melting, luscious and of best quality. Mid-August.
- SHIPPER'S PRIDE.** Large, nearly round, dark purple or blue; firm, good. Early September.

SHROPSHIRE DAMSON. Large for a Damson; dark blue, cling; flesh greenish; esteemed for preserving; late September; vigorous, very productive.

YELLOW EGG. Very large, egg-shape. Color creamy yellow, flesh yellow and of fine quality. A good variety for the Middle West. Ripens end of August.

Japanese Varieties

- ABUNDANCE.** A nearly pinkish red Plum; ripens in mid-season. Thrives everywhere. A regular and heavy bearer.
- BURBANK.** Adapted to any soil and climate where any other Plum is grown. A profitable commercial Plum. Requires little care. Ripens in midseason. See illustration.
- OCTOBER PURPLE.** Strong, vigorous grower; one of the hardest of the Japan varieties. Productive, of good quality, a large, round, late purple Plum, especially recommended for late market.
- RED JUNE.** An early market Plum of large size, with deep vermilion red color, with light lemon-yellow flesh, very firm, slightly sub-acid. Free from rot. August.
- WICKSON.** Large, heart-shaped; dark red, thick bluish bloom; flesh yellow, solid, meaty, sweet, cling; growth upright.

Fort, Dodge, Iowa, April 25.

Gentlemen:—Your plants and vines received Friday, April 21. They came up to all expectations of quality so was very pleased. Have started planting them now and am hoping for all success with them. Thanking you I am,

CARL F. QUADE.

Currants

The Currant is an indispensable garden fruit. It is very largely planted all over the North, and owing to its early ripening season it is grown successfully as a commercial fruit in all sections. An acre of Currants properly cared for will produce from one thousand to twelve hundred dollars worth of fruit annually. Currants are more easily handled than other small fruits, as they hang on the bushes from ten days to two weeks after they become ripe, without injury.

PRICE OF CURRANTS. LARGE FIRST-CLASS BUSHES.

	Each	Doz.	100
Perfection	\$.035	\$3.75	\$20.00
Boskoop Giant and Red Cross25	2.75	15.00
Filler and Diploma25	2.75	15.00
London Market and Fay's Prolific25	2.75	15.00
Black Naples and Wilder25	2.75	15.00
White Imperial and Cherry25	2.75	15.00

We will furnish 6 at doz., 50 at 100, and 500 at 1000 rates.

All our Currants have the same mass of fibrous roots that our fruit trees have.

BLACK CHAMPION. A variety from England. One of the best black Currants yet introduced. Bunches very large, excellent flavor, strong grower and very productive.

CHERRY. Bush vigorous, stocky and compact; cluster rather short, fruit medium large; color bright red; very thin skin; juicy and fine flavor; one of the most productive.

FAY'S PROLIFIC. Berry averages large, juicy and less acid than Cherry; bush not quite so strong a grower.

LONDON MARKET. Bush vigorous, upright; fruit medium to large; color dark red, with sprightly acid flavor; very productive.

PERFECTION. The latest introduction, being a cross between Fay's Prolific and White Grape, combining the best qualities of both. Berry bright red and large. The clusters average longer and the size of berry is maintained to the end of bunch. In quality it is said to be superior to anything in the market today, being of a rich, mild sub-acid flavor with plenty of pulp and few seeds.

RED CROSS. One of the later introductions. A strong growing variety with long clusters. Berry medium to large, bright red. Of mild and pleasant quality and fine flavor.

WILDER. A remarkable variety. One of the best grown. Very productive; bunches and berries large; splendid quality. Superior in every way to the common sorts. Should be largely planted for home and commercial purposes.

WHITE GRAPE. Bush vigorous, somewhat spreading, productive; clusters long; berries large; of very attractive color, mild flavor and good quality; a good table variety.



Perfection Currants.

Quinces

Quince trees can be planted on low, damp, heavy soils where other fruits do not thrive. They require very little attention and are very profitable for market. No home garden is complete without a few Quince trees.

PRICES OF QUINCE TREES.

	Each	Doz.
Champion and Orange, 2-yr., 4 to 5 ft.	\$1.50	\$15.00
Champion and Orange, 2-yr., 3 to 4 ft.	1.00	10.00

CHAMPION. Good bearer; very large; good keeper; very productive. Bears extremely young.

ORANGE (Apple). Large; bright golden yellow; excellent flavor. Fine for domestic use. October.



Champion Quince.

GUARANTEE

The Krider Nursery Co., Inc., guarantee that each plant, shrub and tree shall be of a size and quality as shown in this catalog and that it will reach customer in good growing condition. The company will replace free of charge any stock not in good condition when it reaches customer upon receipt of freight or express bill properly signed by the agent with a notation of the loss or damage entered thereon. This offer does not apply to parcel post shipments.

The company further agrees to replace at one-half regular catalog price any shrub or tree dying during the first year after planting provided written report is made before October 1st following date of purchase.

The company further guarantees that every plant, shrub or tree is true to name and will replace free of charge or refund purchase price of any proven not to be so, but this guarantee shall not be construed to cover any other loss or damage or liability than is here set forth.



Gibson
Strawberries.

POCOMOKE. Good variety. Hardy and productive. Berries beautiful bright red, very large and firm. Flavor good. Stands shipping well. A fine market berry.

SENATOR DUNLAP (P). This berry is of the Warfield type, has a perfect blossom, is hardy, productive, a splendid keeper and able to hold its own under any "tough and tumble" methods of culture to which it is likely to be subjected. It is a very heavy bearer of good size, even fruit, of a very beautiful dark red color. It is a berry to grow for either home use or market.

WARFIELD (P). There is probably no better or more profitable berry grown for market. It is in greater demand than any other berry for canning purposes, which also creates a good market for it. Care should be taken to use the right berries as fertilizers. It needs a strong pollinizer.

Premier

(Per). This new variety has in the space of a few short years, become the most popular early Strawberry known.

Until the advent of the Premier it seemed almost impossible to find an extra early Strawberry that was satisfactory in every way. The main qualifications for a good profitable Strawberry were lacking. Either they were too soft, ripened with green tips, were of poor color and quality, or the berries became small in size after two or three pickings.

All of these faults are now eliminated in the Premier. While it is the first variety to ripen it is of long fruiting season, and holds its size and uniformity to the last picking.

Berry has a rich, glossy appearance, being of a bright red clear through to the heart. It is slightly tart in taste and of such firm texture that it carries well to the most distant markets. Added to these qualifications its large and generally attractive appearance make Premier a variety sought after in all markets.

It is a strong pollinizer, vigorous grower and heavy producer. Being easy to grow it is one of the safest and most profitable Strawberries to the plant, assuring one of success.

Strawberries

THE QUALITY OF STRAWBERRY PLANTS

In looking through the many catalogs you receive you will notice that many claim to be the largest growers of plants, and their plants are the best grown. We do not claim to be the largest grower of plants or that they are better than some others, but we have bought plants from some that make such claims in different parts of the country and have never received any better than we send out. In some cases we had to throw away half of the plants as they had the crowns broken or were so small that they were not worth planting. We guarantee the plants we send out to be as large and as fine as you get anywhere (no matter what you pay), and to be put up in as good condition and if grown side by side, under like conditions, that they will produce as much and as good fruit.

\$1.00 per 100; \$8.00 per 1000.

Color System. We use a different color of wrap for each variety of Strawberry plants, thus assuring you an easy way of keeping the varieties separate when they are unpacked.

Spring Bearing Varieties

AROMA (P). Large; dark red; uniformly roundish, heart-shaped; flesh firm and of very good quality. Stands shipping well; plants vigorous and very productive; blossoms rich in pollen and is good fertilizer for imperfect varieties. Late.

BUBACH (P). Very prolific, excellent flavor and large size. A number of new varieties have been pitted against it, claiming superiority in one way or another, but Bubach is among the best, and continues to grow in favor.

CHARLES I. Probably the largest and most productive Strawberry grown. Quite dark red color. A very firm fruit and for delicacy of flavor it has no equal.

DR. BURRILL (P). Fruit is large, beautiful, dark red in color, and of excellent flavor. Shape similar to the Senator Dunlap and ripens at the same time as the Dunlap; great canning berry. It is an excellent berry for the home garden or for the market. No better.

GANDY (P). Large, light crimson; flesh of firm, good quality. Plants vigorous but should be planted in swamp or moist, clay soils. Perfect. Late.

GIBSON. This is the most popular Strawberry extant today. Best for market and best for the home garden. Berry large; dark glossy, red, nearly round, very productive. Plant Gibson and success will be yours.

HAVERLAND (P). Profitable by reason of its productiveness and earliness; requires deep, heavy soil; plant exceedingly vigorous and healthy; fruit large, handsome and good, rather long in shape and of a bright, glossy crimson; early.

KLONDIKE (P). Large; red; flesh firm, red to the core, with a mild and delicious flavor, unlike any other variety. Is very popular with southern growers who ship. Plant tall, compact, vigorous grower; resists frosts well and yields good crops. Perfect. Midseason.

Premier Strawberry.



Champion
Everbearing
Strawberries.



Everbearing Strawberries

We have been growing Everbearing Strawberries for 12 years and have tried 12 varieties. We have eliminated all but three. These have given excellent results. They will yield as much as the common varieties in June and will produce well all Summer and Fall.

Many people make a mistake in growing only one variety. Like the common varieties, Fall bearers do best if two varieties are planted together.

Try Champion and Indiana. Money back if not satisfied.

CHAMPION (Per.) This berry is a seedling of the Dunlap. Dark red in color and immensely productive. Bears thirty days after planting and continues to bear until the ground is frozen up in the Fall. All through August, September and October the vines are filled with one mass of ripe berries. Per doz., 75c; per 100, \$3.00; per 1000, \$20.00.

INDIANA (Per.) One of the largest of the Everbearers—bears the same season and ripens earlier than Champion. Is dark red with bright yellow seeds, making a fine showy appearance. Very productive. Per doz., 75c; per 100, \$3.00; per 1000, \$25.00.

PROGRESSIVE AND SUPERB \$2.00 per 100; \$18.00 per 1000.

Gooseberries

Strong 2- and 3-year plants.



Downing Gooseberries.

CHAUTAUQUA. Light yellow, largest size, 1 to 1½ inch in diameter; very sweet and delicious. 50c each.

DOWNING. The Business Gooseberry. Pale green; juicy, sprightly and sweet. Strong grower, very productive. 35c each; \$3.00 per doz.

HOUGHTON. The best of the American sorts, as large as the largest English variety. Strong, vigorous grower, hardy, wonderful cropper. Berry rich, juicy, highest quality. 35c each; \$3.00 per doz. Note.—If by parcel post add 2 cents per plant.

King
Raspberries.

grower; early; berry is as large as Gregg and as good a shipper. Very productive, and valuable for early market.

OLDER. Originated in Iowa and has stood the severest Winters well. Coal black, as large as Gregg and five days earlier. From its size, quality, hardiness and great productiveness it promises to head the list.

PALMER. A new early blackcap variety; ripens its fruits just before the Gregg, but ripens it in shorter time. Good quality; vine is a strong grower and one of iron clad firmness.

QUILLEN. This variety originated a few miles south of Indianapolis and has proven to be more disease proof than other varieties of blackcaps. The largest and most prolific of all blackcap varieties; a cross between Cumberland and Hopkins. Ripens a little later than the Cumberland, Kansas and Gregg. We highly recommend this variety. Per doz., \$1.00; per 100, \$5.00.

Red Varieties

Per 25, \$1.25; per 100, \$4.00; per 1000, \$22.50.

By parcel post, 15c per 50 additional.

CUTHBERT. Crimson, large, conical, firm and juicy. The canes are upright, strong and vigorous. Hardy. The standard late red market and home variety that is popular and unsurpassed.

KING RED. Bright scarlet, sweet and melting. This early red is the best of its season because of hardiness, productiveness and general good qualities. Ripens two weeks before Cuthbert.

ST. REGIS. The so-called everbearing. It does produce some berries throughout the Summer, and in the Spring is an excellent producer. Quality very good.

COLUMBIAN. The Columbian is a new variety of the Shaffer type, of remarkable vigor and productiveness. Not very hardy and propagates from tips. Fruit very large, often an inch in diameter, shape somewhat conical, color dark red bordering on purple; adheres firmly to the stem and will dry on the bush if not picked; seeds small and deeply imbedded in a rich juicy pulp with a distinct flavor of its own. Succeeds wherever red sorts do well and promises to become the leading variety. A most delicious table berry. Per doz., \$1.00; per 100, \$5.00.

Yellow Varieties

GOLDEN QUEEN. Large, beautiful translucent amber color and exceptionally firm; very productive. The canes are of the strongest growth and quite hardy. Per doz., \$1.00; per 100, \$5.00.

Blackberries

Blackberries do best on good soil, clay and sand mixture preferred, set in rows 6 feet apart and 2 feet in the rows, 3500 are required per acre. Blackberries are in great demand now at 20c per quart. Give that boy a chance to try his metal by letting him start a patch. He won't have any desire to leave the farm if he is successful in raising fruit. The varieties here given are perfectly hardy and will prove a source of profit. Beware of the Eric, Wilson Jr., Lawton and their like; they will not stand our Winters.

SNYDER. The leading variety here; needs no protection, is rust proof and will stand more neglect than any other variety. In fact it is at its best in sod or shade. Per doz., 75c; per 100, \$5.00; per 1000, \$30.00.

ELDORADO. Largest hardy Blackberry grown. Free from rust and the best money maker here. Berries of the Eldorado bring 50c per crate more than Snyder on the local market. Per doz., 75c; per 100, \$5.00; per 1000, \$35.00.

RATHBUN. This berry is immense a little way south of Indianapolis. It is a good berry for the South and West. It is not quite hardy here. Per doz., 50c; per 100, \$3.00.

BLOWERS. Immensely productive, but berries are not as large as Eldorado and other hardy kinds. Per doz., 50c; per 100, \$3.50; per 1000, \$30.00.

Raspberries

Loose soils produce the best Raspberries. Partial shade is no hindrance to productiveness, as the natural habitat of the Raspberries is in lower ground, filled with leaf mold and partly shaded. For this reason along higher fences and in between the young orchard trees, Raspberries are likely to thrive. Allow not more than five good canes to develop to the plant, and pinch out the tops of these when they attain a height of 2½ to 3 feet in order to encourage laterals.

Both pink and black Raspberries are sold only in bunches of 25 plants. Less than this number is hardly worth the trial.

Black Varieties

Per 25, 75c; per 100, \$4.00; per 1000, \$25.00.

CUMBERLAND. Largest black Raspberry known; unusually strong grower, perfectly hardy. The most profitable Raspberry grown.

GREGG. Extra big, enormously productive. Hardy; firm black meaty berries. Late ripening and firm for shipping.

KANSAS. Originated at Lawrence, Kan. Healthy, vigorous

Quillen Black
Raspberries.

Eldorado Blackberries.

Grapes

Why not set a vineyard this Spring? No fruit yields greater returns on the investment than Grapes. Prices the past year have been from 5 to 6 cents per pound and returns have been as high as \$600.00 per acre. Give that boy a chance. Set 8 feet apart in rows 10 to 14 feet wide. About 600 vines will set an acre. We grow ten varieties of Grapes, but only four are profitable market sorts.
 Price, No. 1 vines, each, 25c; per doz., \$2.00; per 100, \$15.00. All vines heavy, two years old.

Black Varieties

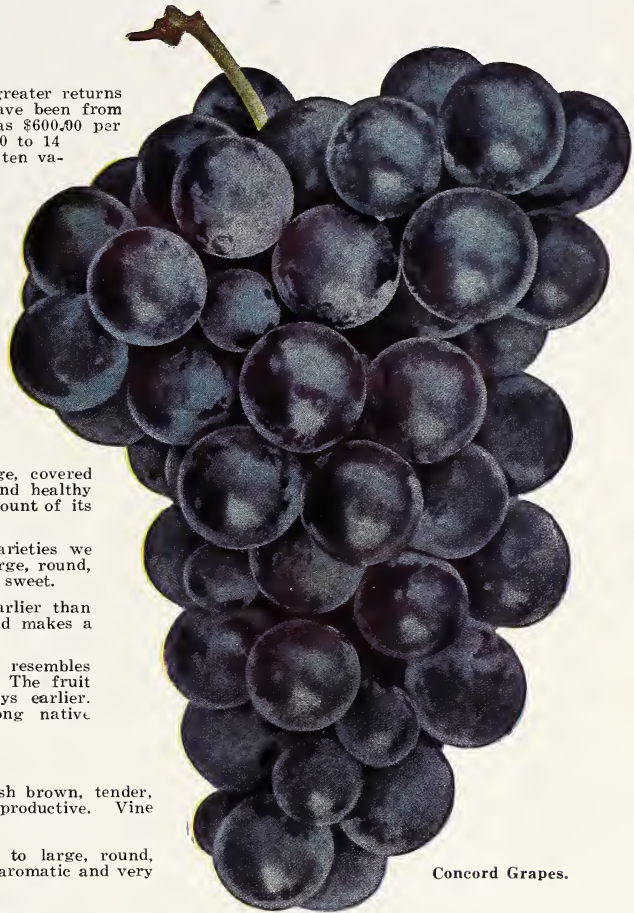
- BETA.** A small desirable Grape that will prosper as far North as North Dakota, often making a growth of 15 to 30 feet in a single season.
- CAMPBELL'S EARLY.** A new, very large and fine early black Grape. Strong, vigorous, hardy vine with thick, healthy leaves; clusters very large, usually shouldered, compact and handsome; berries large, nearly round, black, rich, sweet, very good; skin thin; seeds few and small, parting easily from the pulp; a good shipper. Ripens very early, but remains sound on the vines for many weeks. This makes it one of the most satisfactory and profitable market sorts to grow.
- CHAMPION.** Bunches large and compact; berries large, covered with a rich bloom; poor in quality; vine a strong and healthy grower and a good bearer; profitable for market on account of its earliness.
- *CONCORD.** One of the most popular and reliable varieties we possess; bunch large, compact and shouldered; berry large, round, almost black with blue bloom, juicy, buttery and very sweet.
- MOORE'S EARLY.** A large Grape, ripening a week earlier than Concord; good grower; berries large, good quality, and makes a moderate yield; very valuable as an early Grape.
- WORDEN.** Seedling of the Concord, which it greatly resembles in appearance and flavor, but the berries are larger. The fruit is said to be better flavored and to ripen several days earlier. These qualities will give it the foremost rank among native Grapes.

Red Varieties

- *AGAWAM.** Bunch large, shouldered; berry large, reddish brown, tender, vinous and of excellent flavor. Very vigorous and productive. Vine hardy and one of the best of its class.
- BRIGHTON.** Bunch large, shouldered; berries medium to large, round, dark red, tender, very little pulp, sweet, juicy, slightly aromatic and very good. Ripens early.
- DELAWARE.** The bunches are small, compact, and sometimes shouldered; berries are small with thin but firm skin; flesh juicy, very sweet and refreshing and of the best quality for both table use and for wine. Ripens with Concord or a little before; vine is hardy, productive and a moderate grower.
- SALEM.** Bunch large and compact; berry large, of a light chestnut or Catawba color, thick skin, perfectly free from hard pulp; very sweet and sprightly with a most exquisite aromatic flavor; as early as Worden; keeps well.
- VERGENES.** Berries large, holding firmly to the stem; light amber, rich and delicious. Is an excellent late keeper.

White Varieties

- MARTHA.** Bunches and berries of medium size, greenish white, with a thin bloom; flesh tender, with very little pulp, juicy, sweet and rich, hardy and productive. Ripens with Concord.
- *NIAGARA.** Occupies the same position among the white varieties as Concord among the black. Bunch and berries large, greenish white, changing to pale yellow when fully ripe. Skin thin but tough; quality much like the Concord.
- *POCKLINGTON.** Seedling from the Concord. The vine is thoroughly hardy both in wood and foliage; it is a strong grower, never mildews in vine or foliage. The fruit is a light golden yellow, clear, juicy and sweet to the center, with little or no pulp; bunches very large, sometimes shouldered; berries round, very large and thickly set. Ripens with the Concord.



Concord Grapes.

Rhubarb

- VICTORIA.** The old standard variety, large stalks; medium season. Per doz., \$1.00; per 100, \$5.00.
- LINNEAUS.** One of the leading varieties grown here. Stalks not as large as Victoria, but earlier. Per doz., \$1.00; per 100, \$5.00.

Note.—For many years an old market gardener near Bristol had the early trade of Elkhart on pie plant; he had the largest, earliest and the best flavored pie plant that came to the city. Pies made from it had the flavor of peaches and it was called peach flavored. Since his death we have succeeded in obtaining the entire stock and have at this time 10,000 stalks. We are offering this to our customers at the same price as the common kind. \$1.00 per doz., \$5.00 per 100. Be sure and send for a dozen of this variety in your order. We call it "Miller's Cream" and will give \$25.00 for a dozen stalks that will excel it in size, season and quality.

Asparagus

The first garden vegetable of Spring; it is a great delicacy and comes in just when it is most needed. One hundred roots will supply a small family and will last for years. Set the plants about eighteen inches apart in the row. Spread the roots out in the bottom of the hole or furrow and gradually fill in as the plant grows, so that the roots will be about four inches deep.

Two Years Old.

	Doz.	100	1000
Buckbee's Perfection	\$.50	\$1.25	\$7.00
Bonvalet's Giant	.40	1.00	6.00
Early French Giant Argenteuil	.40	1.00	6.00
Improved Palmetto	.40	1.00	6.00
Columbian Mammoth White	.40	1.00	6.00
Conover's Colossal	.40	1.00	6.00

SPECIAL ON CONCORD GRAPES.		
	Per 100	Per 1000
2-yr., No. 1	\$12.00	\$80.00
1-yr., No. 1	8.00	50.00



Making the Home Beautiful

More attractive homes! Homes larger, better built, more convenient, more attractive. Not only for more heat, more light, more comfort, but also for more beauty.

When God made this country it was a place of trees, shrubs and flowers. Today men are beginning to realize that God's way is the best and everywhere men and women are striving to retain as much of that former beauty as they can. Parks and reserves for everybody, playgrounds for children, green lawns and shrubs and trees and flowers. Civic centers for making better citizens.

Your own home, too, may be likewise a center of beauty at how small a cost many people do not realize. A little loving care is the largest item. Making the desert blossom like the rose is figurative, but making the home grounds more attractive is one step in the process.

A Two-Fold Object

Landscaping has a two-fold object—beauty and utility. The plan must provide for pleasing views, beautiful foliage and charming flowers, the whole making a harmonious picture. It must also provide for convenient walks and drives, ease of handling, and, not the least important, economy of space.

Everyone has noticed the common way of breaking up the open, grassy spaces, and spotting them with individual shrubs

and flowers of all kinds, of laying out drives and walks with useless crooks and turns, with no attempt to shut out unsightly objects. These common errors will be avoided by the use of a well defined plan. As a matter of fact, it is just as bad to set out grounds without a plan as to begin building the same way. It is not necessary to do all the planting at one time, or in one season; the owner may complete the plan at his own convenience.

Free Landscape Service

You may say that you do not know what to plant, that you would like to do something if you only knew what. One purpose of our landscape department is to meet just such emergencies. We are pleased to offer you the services of trained men to advise what to plant to best bring out the full beauty of your house and grounds. No job too small for our attention, no job too large for our facilities to handle.

Some one has said that as we pass through this world only once, each one of us should leave the world a better place in which to live. Certainly planting a tree, setting a shrub or making flowers bloom in a harmony of color is one way to make the world a better and more beautiful place in which to live.

Write us today for your needs.

Shade Trees

ASH - Fraxinus

EUROPEAN, MOUNTAIN. A fine, hardy tree; heads dense and regular, covered from July till Winter with great clusters of bright red berries. 6 to 8 ft., \$2.00 each; 8 to 10 ft., \$3.00 each.

BEECH - Fagus

PURPLE-LEAVED. Discovered in a German forest. An elegant tree, growing 20 to 30 feet high. Foliage a deep purple, changing to crimson; like all varieties of the Beech, this is difficult to transplant, hence small trees 3 feet high are preferable. 3 to 4 ft., \$8.00 each; 6 to 8 ft., \$12.00.

BIRCH - Betula

WHITE. A fine tree of moderate size, with silvery bark and slender branches. 6 to 8 ft., \$5.00 each; 8 to 10 ft., \$6.00 each.

CUT-LEAVED WEEPING. One of the most elegant of all weeping or pendulous trees. Its tall, slender, yet vigorous growth, graceful, drooping habit, silvery white bark and delicately cut foliage present a combination of attractive characteristics rarely met with in a single tree. 6 to 8 ft., \$5.00 each; 8 to 10 ft., \$6.00 each.

THE CATALPAS

BUNGEI (Chinese Catalpa). Umbrella-like head only three or four feet high and twice as broad, forming a pretty dome-shaped head of great, soft, leathery leaves. It is very desirable when grafted on stems five to six feet high for border along drive, walk or around a park where you do not desire tall trees. 3-yr. head, \$3.50; 2-yr., \$2.50.

ELM - Ulmus

AMERICAN. A noble native tree of large size, wide-spreading head and graceful, drooping branches. One of the grandest park and street trees. 8 to 10 ft., \$2.00 each; 2 in., \$5.00 each; 3 to 4 in., \$10.00 each.

MAPLE - Acer

NORWAY. A native of Europe; a large, handsome tree, with broad, deep green, shining foliage. The handsomest and one of the most desirable trees for street, park or lawn. 2 in., \$5.00 each; 3 to 4 in., \$10.00 each.

SUGAR OR ROCK. A very popular American tree, and for its stately form and fine foliage justly ranked among the very best, both for the lawn and the avenue. 8 to 10 ft., \$2.00 each.

SCARLET. A rapid-growing tree with red flowers which appear very early in the Spring. 8 to 10 ft., \$2.00 each.



Silver Maple.

SILVER. A hardy, rapid-growing native tree of large size. Valuable for producing a quick shade. Excellent for street planting. 8 to 10 ft., \$2.00 each.

ASH-LEAVED (Box Elder). A fine, rapid-growing variety with handsome light green foliage and spreading head; very hardy; desirable for street planting, and succeeds in many sections where other varieties of Maple will not thrive. 6 to 8 ft., \$1.50.

JAPAN. Foremost among ornamental stock are the Japanese Maples which, for beauty of coloring, are unsurpassed. They are yearly gaining in favor, and for effective grouping in landscape gardening are invaluable and unrivaled. Strong plants in fine assortment, including varieties with finely cut, bright and dark red, yellow and green and variegated leaves. 2 to 3 ft., \$10.00 each.

MULBERRY - Morus

TEA'S WEEPING RUSSIAN. A weeping variety of the now well-known Russian Mulberry; perfectly hardy in Summer and Winter; withstands extreme heat and cold, and grows naturally in a very graceful form. \$3.00 each.

POPLAR - Populus

LOMBARDY. Well known for its erect, rapid growth and commanding form; very desirable in large grounds and along roads to break the average height and forms of other trees. 6 to 8 ft., \$1.50.

SYCAMORE - Platanus

ORIENTAL PLANE. A lofty, wide-spreading tree; heart-shaped leaves: valuable for its handsome foliage and free growth; not so subject to disease as our native species. Entirely free from worms and insects. One of the oldest cultivated trees known. One of the best and most popular for street and avenue planting. 6 to 8 ft., \$1.50.

WILLOW - Salix

WISCONSIN WEEPING. A large tree, with long, drooping branches, similar to the Babylonia, but much hardier. 6 to 8 ft., \$1.50.

WEEPING BABYLONICA. A well-known and most graceful tree of large size. Its fresh, bright green tint and long, wavy branches make it very attractive. 6 to 8 ft., \$2.00.

KILMARNOCK WEEPING. An exceedingly graceful tree, with large, glossy leaves; very hardy. 6 to 8 ft., \$2.00.

Heavy Elm and Maple, 2-in., \$5.00 each; 3-in., \$8.00 each; 4-in., \$10.00 each. Special prices on larger sizes.



Catalpa Bungei.



Cut-Leaved Weeping Birch.



Althea—Rose of Sharon.



Buddleia—Butterfly Bush.

Hardy Ornamental Shrubs

PRICES ON ALL SHRUBS UNLESS OTHERWISE SPECIFIED.

Heavy, 3 to 4 ft. Clumps\$1.00
 Heavy, 3 to 4 ft. Medium75
 Heavy, 2 to 3 ft.50

Special, 2 to 3 ft.\$0.25
 Special, 3 to 4 ft.50
 Special, 4 to 5 ft. 1.00

ALMOND

DOUBLE-FLOWERING. A most desirable early-flowering shrub, with white and pink flowers.

ALTHEA - Rose of Sharon

Unsurpassed by anything in the hardy shrub line for freedom of bloom or range of color. From midsummer until frost, when few other shrubs are in bloom, the Althea is most handsome, with its large camellia-like flowers of the most varied and beautiful shades.

DOUBLE WHITE. White, with crimson center.

DOUBLE VARIEGATED. Pink and white.

DOUBLE PURPLE.

DOUBLE BLUE. Deep blue.

DOUBLE RED. An excellent striped variety, nicely marked white and deep rose.

ARALIA

ARALIA PENTAPHYLLA. A pretty medium sized shrub. Holds leaves until late in Fall. Valuable for screen planting. Flowers inconspicuous.

SPINOSA (Hercules Club.) A large shrub with stout prickly stems and compound leaves, flowers creamy white in huge panicles sometimes 2 feet long, followed by dark purple berries, giving a tropical appearance to landscape planting. Very good.

AZALEA

MOLLIS. A beautiful species recently brought from Japan; it has fine, large trusses of flowers in shades of pink and yellow; requires some protection.

BUDDLEIA - Butterfly Bush

BUDDLEIA VEITCHI MAGNIFICA. A very attractive new addition to the flowering plants. While a perennial in habit, yet because of its vigor and size, it is used largely in shrub plantings. The tops in severe Winter will freeze back, but it pushes with such renewed vigor this is not harmful. The flowers are borne on the tips of every bit of new growth, and in August the plants are masses of purple and violet flowers, very conspicuous, that attract butterflies.



Forsythia—Golden Bell.

CALYCANTHUS - Sweet Scented Shrub

FLORIDUS. A native shrub attaining a height of from 6 to 8 feet. The flowers, springing from the axis of the leaf, are double and very fragrant, and of a chocolate-red color; foliage is quite large and glossy green. Wood also has a spicy color.

CLETHRA

ALNIFOLIA (Sweet Pepper Bush). A very valuable shrub for border planting on account of abundance of sweet-scented white flowers. Adapted to wet and shady places.

COLUTEA

ARBORESCENS (Bladder Senna). A rapid-growing large shrub with light green foliage. Yellow flowers in June followed by showy red pods.

CHIONANTHUS - Fringe Tree

VIRGINICA (White Fringe Tree). 10 to 20 feet. In favorable locations this develops into tree-like proportions. The contrast between its large, deep green, thick, leathery leaves and the loose drooping bunches of white flowers resembling silken fringe is fine; blossoms May or June.

CORNUS - Dogwood

This group of shrubs is adaptable to use in border and screen plantings. Attractive flowers. Abundance of berries and highly-colored foliage in Autumn. The twigs are a bright color in Winter time.

PANICULATA (Gray Dogwood). A very useful variety for screening purposes. Flowers white, fruit white on bright red stems.

SIBIRICA (Red Twigg'd Dogwood). With small clusters of white flowers, its blue berries and its dark red bark, this is one of the most attractive shrubs.

STOLONIFERA VAR. AUREA (Golden-barked Osier). Bright yellow twigs. Makes an attractive combination with red-twigg'd dogwood.

VAR. FLORIDA (White Flowering Dogwood). Grows from 20 to 25 feet high. Flowers before leaves appear, 3½ inches in diameter. Very durable, lasting two weeks; foliage grayish green, glossy and handsome, turning to a deep red in the Fall. A valuable tree for ornamental planting.

WE WILL BE GLAD TO HELP YOU PLAN YOUR PLANTING.

SHRUBS—Continued

CRATAEGUS - Hawthorn

OXYACANTHA VAR. COCCINEA FLORE PLENO (Paul's Double Scarlet Thorn). The best of the double varieties. A small ornamental tree. Flowers a bright carmine-red superior to any of its color.

CYDONIA - Japan Quince

JAPONICA. Brilliant flowering shrub covered with scarlet flowers early in the Spring. Good for massing.

DEUTZIA

One of the finest of shrubs for abundance of pretty blossoms which cover the plants in early Spring. Can be used in borders, mass or specimen planting. Very good.

CRENATA FLORE PLENO. Flowers double, white, tinged with rose, blooming in late June. Very hardy.

GRACILIS. Of dwarf habit. Flowers pure white. One of the first to bloom. Fine for edging in front of taller shrubs.

GRACILIS VAR. AUREA (Golden-leaved Deutzia). Foliage beautiful yellow. Flowers white and showy.

LEMOINEI. Flowers pure white, shrub medium and free-flowering. Excellent for forcing.

PRIDE OF ROCHESTER. Produces large double white flowers tinged with rose. Profuse bloomer. One of the best. Flowers early.

SCABRA (Rough-leaved Deutzia). A tall shrub with bell-shaped flowers of pure white.



Diervilla Rosea—Weigela.



EUONYMUS - Strawberry Tree

ALATUS (Cork-barked Euonymus). Very attractive in Autumn when full of bright colored fruit and brilliant crimson foliage. Bark very corky.

AMERICANA (Strawberry Tree). Yellowish or reddish green flowers followed by rough crimson pods that burst, showing bright scarlet seeds.

FORSYTHIA - Golden Bell

This is the first shrub to blossom in the Spring, the golden yellow flowers appearing in great profusion before leaves form.

HAMAMELIS

VIRGINIANA (Witch Hazel). Has a wealth of delicate yellow flowers appearing in late Fall. Exceptionally beautiful at the edge of a wood or along woodland paths.

HYDRANGEA

ARBORESCENS (Snowball Hydrangea). Has the appearance of a low-growing snowball with its large clusters of white flowers. Particularly desirable on account of coming into bloom before the *H. paniculata*. Its blooming period is from early June until middle of August. A very desirable shrub.

PANICULATA GRANDIFLORA. One of the most popular shrubs in cultivation, blooming at a time when few shrubs are in bloom. Flowers borne in huge panicles from 8 to 12 inches long, delicate pink changing to brown. Very desirable.

KERRIA - Corchorus; Globe Flower

An attractive shrub with slender green branches and showy yellow flowers. It thrives in almost any well-drained soil. Hardy, but benefited by protection from cold winds in severe climates.

JAPONICA. A slender green-branched shrub covered with single yellow flowers from July to October.

LONICERA - Honeysuckle

TATARICA RUBRA (Red Tartarian). A beautiful shrub. Vigorous and producing large, bright red flowers, striped with white, in June. Very desirable.

TATARICA ALBA. A large shrub having white flowers in May and June.

We will be glad to help you plan your planting.

DIERVILLA - Weigela

AMABILIS, OR SPLENDENS. Of robust habit; large foliage and pink flowers; blooms freely in Autumn. A great acquisition.

VARIEGATED-LEAVED. Leaves bordered with yellowish white, finely marked; flowers bright pink.

ROSEA. An elegant shrub, with fine, rose-colored flowers. Introduced from China, and considered one of the finest plants ever discovered. Quite hardy; blooms in May.

ELAEAGNUS - Oleaster

ANGUSTIFOLIA (Russian Olive). 15 to 25 feet. A very large shrub or small tree; the leaves are narrow and silvery white in color; blossoms are small; yellow and very fragrant; perfectly hardy.

LONGIPES (Silver Thorn). 4 to 6 feet. Of dwarf, spreading habit; foliage dark green above, silvery white beneath; small yellow flowers; fruit oblong, bright red, covered with small white dots, and is edible. Valuable on account of ornamental character of the fruit.



Deutzia, Pride of Rochester.



Hydrangea Paniculata Grandiflora.



Spirea Van Houttei.

MAHONIA - Ashberry

AQUIFOLIA (Holly-leaved Mahonia). A native shrub; very handsome, with purplish shining prickly leaves and bright yellow flowers in May, followed by bluish berries. Very ornamental. 18 to 24 inch, \$2.00 each.

PHILADELPHUS - Mock Orange or Syringa

This old-fashioned shrub with creamy white flowers borne in clusters is found in many plantings. There are many varieties that offer a wide range of size and blooms. All varieties are strong growers and are suitable for border, screen or specimen planting. We have a few new varieties that are exceptionally fine and you will be highly pleased with them.

AVALANCHE. A graceful shrub with slender arching branches covered with white flowers. One of the best.

CORONARIUS (Garland Syringa). Pure white; very fragrant flowers. One of the first to bloom.

CORONARIUS VAR. AUREUS (Golden-leaved Syringa). A beautiful shrub with golden yellow foliage. Keeps its color the entire season. Splendid for grouping with other shrubs in border planting.

GORDONIANUS (Gordon's Syringa). A vigorous grower and profuse bloomer. White flowers; fragrant and late.

GRANDIFLORUS (Large-flowered Syringa). Has large showy flowers, somewhat fragrant. Bark reddish. A rapid grower.

LEMOINEI (Lemoine's Syringa). A graceful shrub with very rich foliage and large pure white fragrant flowers in June.

MONT BLANC. A charming variety; dwarf in habit with very large fragrant flowers produced in great abundance.

PRUNUS - Plum

TRILOBA (Double-flowered Plum). A very desirable addition to the hardy shrubs. Flowers double, delicate pink and thickly set on long slender branches. Blooms in May. 2 to 3 ft., \$1.50 each.

PISSARDI (Purple-leaved Plum). This is the finest purple-leaved tree or shrub. In the Spring the leaves are crimson, changing to dark purple as the season advances. This splendid color is maintained until the leaves drop in the Fall. 3 to 4 ft., \$2.50 each.

RHODOTYPOS

KERRIOIDES (White Kerioides). (F) 4-5 ft. White. May and June. Very ornamental shrub with bright green, pleated leaves and large white flowers one-half to one inch across. These are produced in the ends of the branchlets and are followed by conspicuous shining black fruits that adhere practically all Winter. A desirable shrub.



Spirea Anthony Waterer.

RHAMNUS - Buck-thorn

CATHARTICUS (Common Buckthorn). 8 to 10 feet. A very useful hedge plant. Foliage dense and dark green. Has attractive white flowers in June and July.

RHUS - Sumac

The Sumacs as a class appeal to the planter most for the wonderful Fall coloring of the foliage.

COTINUS (Purple Fringe). 12-16 ft. Better known as Smoke Tree. Flowers in loose panicles which become purple and give tree a smoky appearance in early Fall. Foliage of bright green and glossy color.

GLABRA (Smooth Sumac). 10-15 ft. One of the best of the Sumacs to produce natural effects.

LACINIATA. 8-10 ft. A cut-leaf form of the above that looks like a fern, tropical in appearance and showy.

TYPHINA (Staghorn Sumac). 10-12 ft. A large

shrub or tree much used in landscape background work. Brilliant red foliage in the Fall.

ROSA RUGOSA - Japan Rose

RUGOSA (Single Japan Rose). Pink and white. May to September. Upright, hardy shrubs with very thorny branches. Leaves are dark green, pubescent and plicated. Flowers are frequently two inches across and very showy. The fruits (hips) that follow are also bright red and very ornamental. The plant is very desirable for massing and to get the best blossoms occasionally cut out the old wood to encourage new growth.

SAMBUCUS - Elder

NIGRA VAR. AUREA (Golden-leaved Elder). One of the best yellow foliage plants. Retains its color the entire season and is very conspicuous in every planting. Quick to establish itself, robust grower and attractive. 35c each.

IT'S NOT A HOME UNLESS IT'S PLANTED.



Symphoricarpos Racemosus—Snowberry.

SPIREA - Meadow Sweet

The Spirea is one of the best shrubs grown. Very attractive for garden or shrub border.

ARGUTA. Of dwarf habit, spreading head, flowers pure white. The best of the very early flowering white varieties. Blooms in May.

ANTHONY WATERER. A fine dwarf Spirea with dark crimson flowers.

BILLIARDI (Billiard's Spirea). Flowers are rose-colored. Blooms nearly all Summer.

BUMALDA. A handsome variety from Japan. Dwarf in habit and of vigorous growth. Foliage narrow; flowers rose-colored and borne in great profusion. Blooms a long time.

CALLOSA (Fortune's Spirea). Has large panicles of deep rosy blooms. Grows freely and blooms nearly all Summer. Excellent.

CALLOSA ALBA. One of the best dwarf white-flowering shrubs. Very symmetrical.

DOUGLASI (Douglas's Spirea). A beautiful variety with spikes of deep rose-colored flowers in July and August.

VAN HOUTTEL. This is undoubtedly the most charming and beautiful of all the varieties having pure white flowers in clusters, the branches drooping to the ground. Foliage a rich green. Very profuse in bloom and plants remarkably hardy. An indispensable ornament for lawn or hedges. The variety most commonly planted. Commonly called Bridal Wreath.

"SYMPHORICARPOS

RACEMOSUS (Snowberry). (F) 4-5 ft. This shrub has small pinkish flowers in July, followed by white berries which remain on well into the Winter.

VULGARIS (Coralberry, Buck Bush, Indian Currant). 4-5 ft. A very hardy, tough shrub that can be established where others fail. Its wealth of coral-like red berries are quite showy during Winter. This and the Snowberry go well together.

SYRINGA - Lilac

Lilacs are such old and intimate friends that it seems they would not need to be described. Yet the intrinsic worth of these flowers with their white, pink, blue, purple, and lilac tints in May and a perfume that permeates the very air for quite a distance beyond the tips of the heart-shaped leaves, is something the enjoyment of which will not cloy, even while other flowers come and go on waves of popular favor. It is a very upright shrub, easily grown at home in any soil.

PERSIAN. Small foliage and bright purple flowers. 75c each.

PURPLE. The well-known old-fashioned variety with purple fragrant flowers in May. 2 to 3 ft., 50c; 3 to 4 ft., 60c.

CHAS. X. Red. \$1.00 each.

SOUVENIR DE LUDWIG SPAETH. Dark purplish red flowers, large, and in long panicles. A distinct, superb sort that will give great satisfaction. \$1.00 each.

TAMARIX

Shrubs of strong but slender, delicate growth similar to the asparagus. Their pink flowers, filmy foliage and gracefulness make them one of the most desirable shrubs for background or inter-planting. Will grow in poor, dry soil where other shrubs fail.

AESTIVALIS. (F) 6-7 ft. Pink. June. This species has bluish gray foliage, carmine pink flowers, and also blooms late in the Summer.

AFRICANA. 7-10 ft. Deep pink. April and May. This is the most vigorous of any. Sea green foliage and pink flowers; blooms early. 3 to 4 ft., \$1.00 each.



Persian Lilac.



Japanese Snowball.

VIBURNUM - The Snowballs

3 ft., \$1.00; 2 ft., 75c; 18 in., 50c.

In this group are some of the most conspicuous shrubs for blossoms, berries or autumnal foliage we have. They are all hardy, vigorous and healthy. For individual specimens or shrubbery borders they are desirable. Most of them will grow in partial shade but do better in the sun.

LANTANA (Wayfaring Tree). (F) 10-12 ft. White. June. A large, vigorous shrub with soft, heavy lantana-like leaves and large clusters of white flowers in May, succeeded by red berries which turn black as they ripen.

OPULUS (High Bush Cranberry). 8-10 ft. White. May. Strong, rather spreading habit with single white flowers borne in flat clusters. The very showy red fruit which follows and the beautiful coloring in the Fall go to make it one of the best.

PPLICATUM (Japanese Snowball). 6-8 ft. White. May. This species is one of the most satisfactory shrubs grown. Its pure white double blossoms with a setting of dark pleated leaves and perfect form make it one of the best. Fine for an individual specimen or in groups.

STERILE (Old-fashioned Snowball). 10-12 ft. White. May. This old-fashioned variety is well known to every lover of plants. Its balls of pure white literally cover the bush when in bloom.

XANTHORRHIZA

SORBIFOLIA (Ash-leaved Spirea). Cream. July. Blooms in July in long white spikes. Foliage resembles an ash somewhat. Valued for shady, moist locations. \$1.00 each.

IT'S NOT A HOME UNLESS
IT'S PLANTED.

The Krider Nurseries, Inc.

Middlebury, Indiana.

Gentlemen:—The 11,000 Strawberry plants purchased in the Spring were received in fine condition. I have never seen any stronger, better rooted plants.

On account of not being able to have my ground plowed in the Fall I had to set these plants in fresh turned sod, which I know is not advisable.

In spite of such conditions I have a patch which old strawberry growers who have seen it will hardly believe is a first-year patch. You may look for another order from me in the Spring.

Yours truly, C. N. CRISWELL.

Evergreen Flowering Shrubs

Azalea

MOLLIS. We import all the leading varieties. The colors include pure white, all shades of crimson, scarlet, purple, salmon, and variegations. 12 inch, \$2.00.

Camellia

JAPONICA. Our importations of this fine shrub are increasing each year. We can supply all colors, white, red, pink, and variegated. Our plants are stocky and well grown. \$2.00.

Gardenia

FLORIDA (Cape Jasmine). Flowers large, white and fragrant; foliage glossy.

FORTUNEI. Flowers larger than Florida.

RADICANS. Dwarf; trailing; foliage smaller than above; flowers white, very fragrant. \$2.00 each.

Rhododendron

This, wherever known, is universally acknowledged to be the most showy, magnificent, hardy evergreen shrub that grows. It will thrive in any good soil without any special preparation, and in the full blaze of the sun; but it is more luxuriant in good, well-prepared soil of leaf-mold and muck and peat mixed, and in partial shade. The broad, thick evergreen foliage, with its glossy richness, would alone entitle it to a place foremost in the rank of evergreen shrubs; but when in June this mass of luxuriant foliage is almost hidden by the magnificent array of beautiful flowers in clusters, it is simply grand. A protection of leaves and brush during the first Winter will be beneficial. The plants we offer are strong and bushy, well set with flower-buds, and will flower nicely the first year. Red, pink, white and variegated. 12 inch, \$6.00; 18 inch, \$8.00 each.

Ornamental Hedge

A small amount of money invested in beautiful hedges will add more value to a country or town home property, dollar for dollar, than any other similar investment without exception. A hedge planted about the borders of a lawn will transform a heretofore bare looking spot into a place of beauty; and you can keep it low or let it go high, as a screen. City lots may be divided by hedging with fine effect. In dozens of different ways, which suggest themselves to the property owner, hedging may be used with great profit. A hedge is easily set, a little care will keep it in perfect condition, and it is a wonder that more are not planted.

Ligustrum - Privet

AMURENSE (Amoor River Privet). A valuable ornamental shrub for hedging and borders. Very hardy foliage; glossy green, and holds its color almost the entire year. Will stand clipping to any extent. 1-yr., \$10.00 per 100; 2-yr., \$20.00 per 100; 3-yr., \$30.00 per 100.

IBOTA (Chinese Privet). A native of China and Japan. Foliage long and shining; flowers large, white and fragrant. Valuable for its flowers and foliage. 1-yr., \$10.00 per 100; 2-yr., \$20.00 per 100.

CALIFORNIA PRIVET. 2-year, well-branched. 15c each; \$1.00 per 10; \$8.00 per 100. 1-yr., \$5.00 per 100.

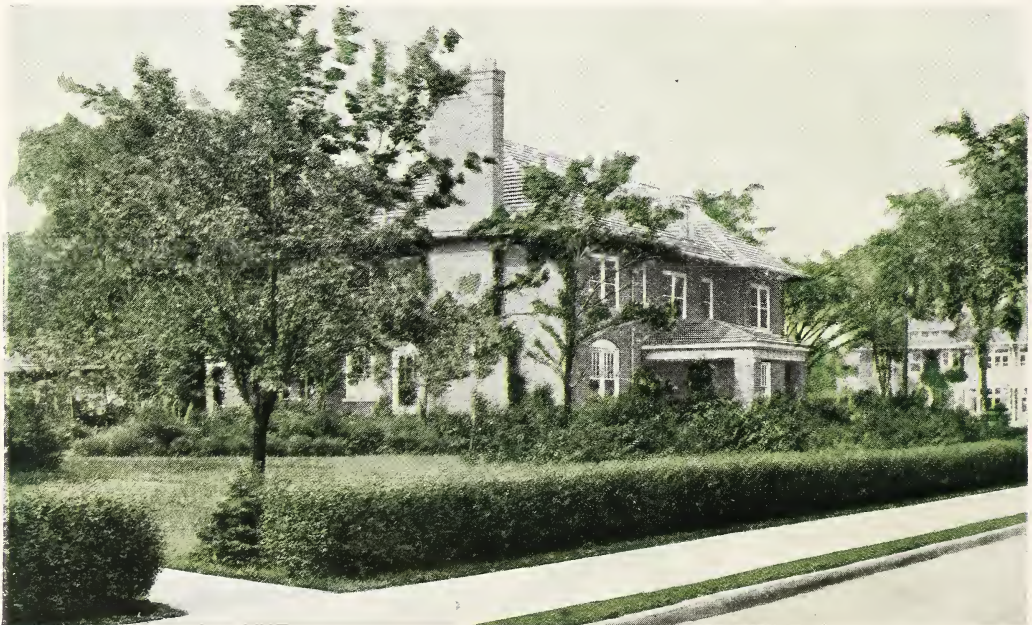
Berberis - Barberry

1-yr., \$10.00 per 100; 2-yr., \$25.00 per 100; 3-yr., \$40.00 per 100.

THUNBERGI (Japanese Barberry). This is a low shrub, with brown, horizontal branches growing so thick and matted that, even though the leaves fall in Winter, the hedge still is dense. Add to that the appearance of the bright scarlet berries growing almost as thick as leaves and fresh till Spring and you have an idea of its Winter garb. In the Summer there are hosts of little pale yellow flowers among small, round foliage. It grows 3 feet high only.

NORWAY SPRUCE. 12 to 15 inch. \$5.00 per 10; \$40.00 per 100.

ARBOR-VITAE. 12 to 15 in. \$4.00 per 10; \$35.00 per 100.



Amoor River Privet Hedge.

Vines and Creepers

Nothing lends such pleasing effect to wall or veranda as the judicious use of vines. The hardy vine is best adapted for covering an unsightly wall or for furnishing shade and ornament to verandas. Hardy vines practically take care of themselves after they are once established and are much more desirable and less trouble than annual or tender varieties.

Ampelopsis Veitchi - Boston Ivy

A beautiful hardy climbing plant. This is one of the finest climbers we have for covering walls, as it clings firmly to the smoothest surface, covering it smoothly with overlapping foliage, giving it the appearance of being shingled with green leaves. The color is a fresh deep green in Summer, changing to the brightest shade of crimson and yellow in Autumn. It is quite hardy and becomes more popular every year. 2-yr., 50c.

Clematis

A beautiful class of climbers, many of the varieties with flowers 5 to 7 inches in diameter. Excellent for pillars or trellises; or when used for bedding, running over rock work or an old tree or stump, they make an excellent show. They delight in a rich soil, a sunny situation; perfectly hardy.



Boston Ivy.

DUCHESS OF EDINBURGH. A free-flowering, double white variety, with medium-sized flowers. \$1.00.

HENRYL. Fine large, creamy white flowers. A strong grower and very hardy, one of the best of the white varieties; a perpetual bloomer. \$1.00.

JACKMANI. The flowers, when fully expanded, are from 4 to 6 inches in diameter; intense violet-purple, with a rich velvety appearance, distinctly veined. It flowers continually from July until cut off by frost. \$1.00 each.

JACKMANI ALBA. Fine, large, pure white flowers. \$1.00 each.

MME. EDOUARD ANDRE. This is the nearest approach to a bright red Clematis and has been called the Crimson Jackmani. The plant is a strong, vigorous grower and very free in bloom. Color a distinct crimson-red; a very pleasing shade and entirely distinct from all other varieties. \$1.00 each.

PANICULATA, or SWEET-SCENTED JAPAN CLEMATIS. A Japanese plant possessing unusually attractive merit. A vine of very rapid growth, quickly covering trellises and arbors with handsome, clean, glossy green foliage. The flowers are of medium size, pure white, borne in immense sheets and of a most delicious and penetrating fragrance. The flowers appear in September, at a season when very few other vines are in bloom. 75c each.

Honeysuckle - Lonicera

CHINESE TWINING (Lonicera Japonica). A well-known vine, holding its foliage nearly all Winter. Blooms in July and September, and is very sweet. 50c each.

COMMON WOODBINE (Lonicera periclymenum). A strong, rapid grower, with very showy flowers, red outside, buff within. June and July. 50c each.

HALL'S JAPAN (Lonicera Halliana). A strong, vigorous evergreen variety, with pure white flowers, changing to yellow. Very fragrant; covered with flowers from June to November. 50c each.

JAPAN GOLD-LEAVED (Lonicera aurea reticulata). A handsome variety, having foliage beautifully netted or variegated with yellow. 75c each.

Wisteria

CHINESE PURPLE (Wisteria sinensis). A most beautiful climber of rapid growth, and producing long, pendulous clusters of pale blue flowers. When well established it makes an enormous growth; it is very hardy; and one of the most superb vines ever introduced. The very best vine to grow when it is desired to have it shade the upper part of the house, as its heaviest growth is at the top. 50c each.

CHINESE WHITE (Wisteria sinensis alba). Introduced from China, and regarded as one of the greatest acquisitions; a rather slow grower. 50c each.

Hardy Perennial Garden Plants

Will Add Old-Fashioned Loveliness to Your Lawn and Driveways

As we are one of the few general nursery companies that grow perennials in our own greenhouses, we are able to offer an extensive list of varieties at a very low price to both our retail and wholesale trade. Write us for our illustrated bulb and perennial catalog. We have an exceptionally large stock of the following:

Hardy Phlox, Delphinium, Aquilegia, Coreopsis, Digitalis, Dianthus, Gail-lardia, Iris, Gladioli, Dahlias and Peonies. Besides these we are headquarters for Tulip, Narcissus, Hyacinth, Crocus and Jonquil bulbs. Our stock of other varieties of perennials is fairly large. Why not let us plan a perennial garden or border for you, so that you may have cut flowers from early Spring to late Fall?



Delphinium.



Dahlias

Well known Autumn flowering plants, growing from two to five feet high, and producing a profusion of flowers of the most perfect and beautiful form, varying in color from the purest white to the darkest maroon.

Cactus Dahlias

J. H. JACKSON. The largest and finest dark Cactus; brilliant crimson-maroon; flowers very large and of fine form.
WODAN. Bold, large, but not coarse flower, frequently 7 inches in diameter. A graceful arrangement of semi-incurved petals of a pleasing delicate salmon-rose color, shading to old gold in center. Unusually free blooming variety. 50c each.

MME. HENRI CAYEUX (Straight). The flowers are of the largest size with long, narrow florets, forming a bloom of magnificent form. The color is a beautiful rich pink, daintily tipped white. 50c each.

ELSIE BURGESS. Color delicate white ground tipped and suffused with a beautiful lavender and faint light pink. Free bloomer; fine for cut flowers.

GOLDEN EAGLE (Straight). One of the finest golden yellow Cactus Dahlias. It is first-class in every way.

FRANCIS WILSON. A large deep flower, composed of long curled and twisted narrow petals of a pure snowy white.

Finest Peony-Flowered Dahlias

DAY BREAK. This is claimed to be the largest white Peony Dahlia in cultivation. A very fine exhibition variety. 50c each.

LE GRAND MANITOU. Pure white, artistically striped, splashed, and blotched deep violet-purple. The plants occasionally bear a solid purple colored flower.

JACK ROSE. This is a brilliant crimson-red. Is fine for the garden and for cutting.

JAN OLIESLAGER. Deep primrose-yellow; rich and effective. Flowers are large and full; very upright stems; free bloomer.

HAMPTON. Flowers are of good size, standing well above the foliage. A charming bright pink, suffused with lavender pink. A well known cut flower variety.

AMERICAN BEAUTY. A seedling from the well known French variety, *Le Colosse*, being almost identical in form, shape and size. The flowers are of gigantic size and are produced on long, heavy stems, well above the foliage. The color is a gorgeous wine-crimson.

W. N. RAWSON. Very large, semi-quilled petals, good stem, color white, overlaid mauve. 50c each.

PENELOPE. White, flaked rosy lake; beautiful and chaste. 50c each.

QUEEN OF HEARTS. Pure yellow. The petals are deeply serrated, giving the flower a fluffy appearance which is most attractive.

KING ALBERT. Rich, glowing purple.

PAPA CHARMER. This is a California variety, producing large blooms on good stem. Color is of the deepest shade of red or maroon, and green; in slight shade are nearly black.

JEANNE CHARMER. Color deep rose-pink. Good stem.

All Dahlias unless otherwise marked, 25c each; 5 for \$1.00.



The Various Types of Dahlias.

The Krider Nurseries,
Middlebury, Indiana.

Dear Sirs:—When you run across a good thing hold on to it. Krider Nurseries surely is it when it comes to quality, quantity and right prices. We are coming back for another order and hope you are not sold out as you happened to be last Spring. Please send me your catalog, also a catalog of your Fall bulbs. Respectfully,
Mrs. Dassie S. Goldsberry.
Galveston, Indiana.

Peonies

The finest list in Indiana to choose from. Peonies may be planted in the Spring or Fall with equally good results. We planted an acre last Spring that were in full bloom on June 5th to 10th. They will not bloom quite as early the same season they are planted as they will the second year.

We offer the following varieties at prices offered in good 3 to 5 eyes that will bloom the first season. We purchased our original plantings from the best Peony experts and we paid much more than we ask for same.

ALICE ROOSEVELT (Terry). White, large and fragrant, center petals rosy purple, center cream, shading white. 50c each.

DUCHESS OF ORLEANS. Deep pink, standard for midseason, very fine. 50c each.

DELICATISSIMA. Fine pink for cutting. 50c each.

EDOUARD ANDRE. Dark red, early, fine. 75c each.

EDULIS SUPERBA. Best early pink, fine for decoration, good commercial sort. 50c each.

EMPEROR WILLIAM. Best of all reds, very fine, blooms profusely, superior to Felix. \$1.00 each.

FELIX CROUSSE. Red, a leader for cut flowers, very showy. 75c each.

FESTIVA MAXIMA. White, the best of all early white for cut flowers.

ESTHER (Terry). White, outer petals rose, very fragrant, like a rose, one of Terry's best. \$1.00 each.

ELSIE LAPWORTH (Terry). White, large, globular, outer petals tinted rose tipped white, base straw color, very fragrant. 75c each.

GROVER CLEVELAND. Deep crimson, large globular type, fringed. 50c each.

GOLDEN HARVEST (Rosenfield). Medium size, pale pink to creamy white, rather dwarf, but A-1 in every respect. 75c each.

GENERAL SHERIDAN (Terry). Globe; deep pink, tip white; vigorous and free, A-1. 75c each.

GENERAL MILES (Terry). Brilliant red, large, globular and robust. 75c each.

HELENA LESLIE. Very good type. 50c each.

HELLO CENTRAL. Fine, early sort. 50c each.

HUMEL (Cornell). Large, pink, strong and late; also called Humei Carnea. 50c each.

LOUIS VAN HOUTTE. Dark red, very free, tall, good for cutting. 75c each.

KARL ROSENFELD. Dark red, very fine, midseason. \$1.00 each.

MME. DUCEL. Salmon, rose, midseason, very fine. 50c each.

MONS. JULES ELIE. Pale rose, very fine early sort. 75c each.

PAPIVAFLORA. Cream, center white. 75c each.

PURPLE RED. Red, similar to Felix Crousse. 75c each.

RUBRA TRIUMPHANS. Dark crimson, early midseason.

RUBRA SUPERBA (Richardson). Rich, red, free, large flower; superior in every way; midseason. 50c each.

VICTOR HUGO. We consider this the handsomest Peony on our list; dark red, very dazzling and changeable colors. \$1.00 ea.

UNNAMED. Red, pink, white, flesh or mixed at 35c each; 3 for \$1.00.

We sell 12 of any 50c varieties for \$5.00.

We sell 12 of any 75c varieties for \$7.50.

We sell 12 of any \$1.00 varieties for \$10.00.



White—Festiva Maxima.

Pink—Edulis Superba.

Red—Emperor William.

Krider's Hardy Northern Grown Roses

All the Newest—All the Finest

Roses are undoubtedly the richest and most luxurious of all flowers. No garden or greenhouse is complete without them, on account of their loveliness. Many people think that it requires a southern climate to make them grow successfully. Not so. Hardy field-grown Roses such as Krider's will be a riot of luxurious loveliness if only a little care is used in choosing the soil and keeping off the Rose pests.

A clay soil is needed for the best success. Spraying with Black Leaf 40 in an ordinary hand sprayer is usually sufficient. Krider's northern field-grown Roses are exceptionally hardy. From the list given here any Rose connoisseur will know that only the rarest and most beautiful kinds are offered. The kinds that bring a thrill to you when the blossoms open, the kinds that bring envy to your neighbors and the never-omitted query, "where did you get it?" Send us a sketch of your yard and let our landscape department plan a Rose garden for you.

Hybrid Perpetual

AMERICAN BEAUTY. An everblooming Hybrid Perpetual. The flowers are very large, of beautiful form and very double; color a deep, rich rose. This is the Rose which is grown by the million for cut flowers. The fragrance is delightful, resembling La France. 75c each.

BETTY. Glorious coppery rose, overspread with golden yellow. \$1.00 each.

BRIDESMAID. Clear, bright pink; a constant bloomer; large, full and globular; one of the finest Teas. Very fragrant. 75c each.

CLIO. Flesh color, very fine Rose. 75c each.

COLUMBIA. A new Rose. A large fully double Rose. Pink. Of lasting qualities. Very vigorous grower. \$1.00 each.

FRAU KARL DRUSCHKI. Snow white, very large, perfect form. A vigorous grower and free bloomer. Bright, heavy foliage. 75c each.

GENERAL MacARTHUR. A new everblooming Rose, flowers and buds are extra large, bright glowing crimson-scarlet; a vigorous grower; every shoot producing a flower of brilliant color. 75c each.

GENERAL JACQUEMINOT. Bright crimson; perfect; medium-size flowers, very much perfumed and very handsome and brilliant in the bud. General Jack blooms early and profusely; grows vigorously, with a compact habit and has handsome pointed leaves. An old favorite. 75c each.

GOLDEN GATE. A beautiful yellow Rose, very double and full; fragrant; rich cream-white tinged with golden yellow; constant bloomer. 75c each.

GRUSS AN TEPLITZ. Flowers dark, rich crimson, passing to fiery-red as they mature; one of the brightest colored Roses, large, full and sweet; vigorous grower and very hardy. 75c each.

LADY HILLINGDON. Another very fine Rose, not recommended for outdoor growing, but on account of its great beauty is well worth special care. Flowers are deep, apricot-yellow, with long, pointed buds and stems of good length. \$1.00 each.

LOS ANGELES. Of very vigorous growth; color flame pink toned with coral, with lighter shadings at the base. Buds are long and pointed, and expanding to a flower of mammoth size. \$1.50 each; \$15.00 per doz.

MARSHALL P. WILDER. Extra large, full deep red; a free bloomer and very handsome. 85c each.

MRS. JOHN LAING. This Rose is a silky pink, which shows different in varying lights. Finely formed, large, double, very sweet flowers, on long stems. The quick growing bush blooms nearly equal to the monthly Roses. One of the best Hybrid Perpetuals for all outside purposes, also desirable for forcing. 85c each.

OPHELIA (Wm. Paul & Son, 1913). A Rose that is admired by everyone; its flowers are held erect on long, stiff stems, are of perfect form, good size, and of a most pleasing delicate tint of salmon-flesh, shaded with rose, very prolific. \$1.00 each; \$9.00 per doz.

PAUL NEYRON. The largest Rose in cultivation. Sometimes called the Peony Rose. Color light, smoky Rose; flowers are very double and full, delightfully fragrant. The plant makes a strong, healthy growth, and has clean, glossy foliage. Blooms very good from June until late October. 75c each.

PRINCE CAMILLE DE ROHAN. A deep blood red and maroon; the very darkest of all Roses, appearing almost black at a little distance. As flowers mature they take on a smoky tinge—certainly a splendid coloring. Blooms double, fragrant and of medium size. Bush free grower with spreading habit; hardy and generous bearer. 85c each.

SOLEIL D'OR (Sun of Gold). A strong, hardy Rose; large, full and double; golden orange yellow tinged with red and rosy pink; a magnificent Rose. \$1.00 each.

SUNBURST. Magnificent giant yellow Rose, suffused with orange-copper, all intense shades, giving an extremely brilliant effect. Buds long and pointed on long stout stems, opening full and double. \$1.00 each.

ULRICH BRUNNER. Seedling from Paul Neyron. Extra large, bold flowers; full and globular, very fragrant; petals large and of good substance; color rich, glowing cherry, elegantly mingled with scarlet. Vigorous, healthy and blooms freely. One of the best and finest hardy Roses. 85c each.



Columbia Rose.

CERTIFICATE OF NURSERY INSPECTION NO. 68.

Indianapolis, Ind., Sept. 12th, 1924.
This is to certify that the nursery stock grown by The Krider Nurseries, Inc., located at Middlebury, Indiana, consisting of 225 acres, has been inspected by the undersigned or his authorized representative on September 12th, 1924, in compliance with Chapter 177, page 291, Indiana Acts of 1907, and has been found apparently free from destructively injurious insects and plant diseases.

This certificate covers general nursery stock and is valid, unless revoked for cause until June 1, 1925.

Signed, FRANK N. WALLACE,
State Entomologist.

Baby Ramblers and Polyantha Roses

A type of Rose which is very popular for bedding purposes. They form shapely, compact, bushy specimens about 18 inches high, producing in great profusion from early in the season until severe frost, immense trusses of small flowers. Pruning is not necessary; simply remove the past season's flower stems. Each 75c; 3 for \$2.00.

BABY RAMBLER. This is the original Baby Rambler, daddy of them all. It is in bloom all the time, flowers in large clusters of brightest crimson. It grows to a height of eighteen inches and hides the plant with its bloom. A most wonderful Rose.

ORLEANS ROSE. The best Polyantha Rose ever raised. Color brilliant geranium-red, suffused with rose, center white, making a charming combination. Awarded a gold medal.

TIP TOP, "BABY DOLL" (Lambert, 1915). This delightful little "Sweetheart" Rose is a wonder. The color is absolutely new and quite startling in its brilliancy, golden yellow tipped with clear, bright cerise. The foliage is narrow, long and sharply pointed, a deep glossy green—a very beautiful setting for the lovely little doll Roses, a bench of "Baby Doll" being an even parterre of delicious color.

BABY TAUSENDSCHOEN. We have nothing lovelier in Roses than this Dwarf Polyantha with its beautiful bouquets of creamy white, saucer shaped flowers, every petal edged with lovely rosy pink. One of the most beautiful of pot Roses.

GEORGE ELGER. A lovely little yellow Polyantha Rose with a good mixture of Tea blood. Like all of its class. It is free in growth, free in bloom, with small glossy foliage produced in profusion. The dainty little pointed yellow buds open into pretty little symmetrical Roses. Will prove a very popular corsage variety.

CATHERINE ZEIMET. This is the new White Baby Rambler. A continuous blooming Rose of great merit. Fine for bedding.

JESSIE. This new Baby Rambler is an ideal Rose for massing, bedding or for pot culture. The flowers, which are produced in huge clusters, are of a bright cherry-crimson color which does not fade.

Mlle. CECILE BRUNNER. Rosy pink on rich creamy white ground; a great bloomer; very satisfactory for bedding.

ERNA TESCHENDORFF. The much-heralded variety from Holland. Color, brilliant dark carmine-red, and is darker than Red Baby Rambler. Very free flowering.

ELLEN POULSEN. Dark, brilliant pink; large, full; sweet-scented; vigorous bushy habit, most floriferous; very fine.

Hardy Climbing Roses

CLIMBING AMERICAN BEAUTY. Flowers of large size, good form, of rich, red color passing to crimson. Very fragrant. Good foliage and absolutely hardy. 2-yr., 60c.

DOROTHY PERKINS. Beautiful shell-pink, which holds for a long time, shading to a lovely deep rose. Very sweetly scented, hardy and a strong grower. 2-yr., 60c.

DR. W. VAN FLEET. This new Rose has a great future. In flower and foliage it is all that could be expected of a climbing Rose. Blossoms extra large, resembling the tender Hybrid Tea Roses in shape and size. Its strong stems are 12 to 18 inches long, making it valuable for cutting. In color a delicate flesh pink changing when full blown to a flesh white shade. 2-yr., 60c.

EXCELSA or RED DOROTHY PERKINS. Intense crimson scarlet. Double flowers in brilliant clusters set in glossy green foliage. Extremely vigorous and one of the handsomest of all climbers. 2-yr., 60c.

PAUL'S SCARLET CLIMBER. An entirely new variety, combining vigorous growth, wonderful foliage and absolute hardiness, together with flowers almost as large as those produced on bush Roses; in color a brilliant scarlet which lasts well. 2-yr., 75c.

FLOWER OF FAIRFIELD (Everblooming Crimson Rambler). Brilliant crimson. Flowers almost continually in brilliant clusters from early Summer until frost. 2-yr., 60c.

CRIMSON RAMBLER. One of the most popular of the climbers. A rapid grower and perfectly hardy; flowers in rich clusters of vivid crimson. One year plants will attain a height of 10 to 20 feet in a single season and the second year they will produce a marvelous profusion of their rich glowing crimson flowers. 2-yr., 60c.

TAUSENDSCHOEN (Thousand Beauties). Varying in shade from a delicately flushed white to a deep pink or reddish crimson, in bright clusters, almost covering the handsome green foliage. A climbing Rose that comes to us from Germany. It gets its name from its many flowers and from their variation in coloring. 2-yr., 60c.

WHITE DOROTHY PERKINS. A pure white sport from Dorothy Perkins, with which it is identical in variety and habits. A valuable addition to the hardy climbing class. The plant is a strong, rampant grower, covering a large porch or trellis in a remarkably short time. 2-yr., 60c.



Baby
Crimson
Rambler.



Clio.

Soleil d'Or.



No. 1—Pyramidal Arbor-Vitae. No. 2—Mugho Pine. No. 3—Colorado Blue Spruce. No. 4—Koster's Blue Spruce. No. 5—American Arbor-Vitae. No. 6—Concolor Fir.

Coniferous Evergreens

Evergreens are always in favor for landscape work, their different colored foliage making a strong background for the brilliant colors of Summer, but it is in Winter, when the Northern landscape is barren of color and foliage, and the beauty of the Southern greatly lessened, that they are most appreciated, the absence of other colors tending to bring out their beauty of form in a most striking manner.

Our Conifers are grown in the most careful and scientific manner. We transplant them several times before allowing them to go out to our customers, insuring a strong fibrous root growth. Trees that have not been several times transplanted and become acclimated to our climate are almost sure to die.

Caution. Do not buy cheap Evergreens. Unless they have been treated as above stated you will be disappointed with results.

Do not let the sun or wind strike the roots of Evergreens even for a few minutes; you will kill them if you do. Every Conifer offered in this catalog, unless otherwise stated, is taken from the field with the roots securely closed in a ball of earth and this bound on with a piece of burlap. The roots are never exposed. When you receive the plants, have hole ready, remove burlap (but not dirt), plant immediately, water thoroughly, but do not apply over foliage.

Abies - The Firs

3 ft., \$5.00; 5 ft., \$10.00.

Trees are generally pyramidal in shape and hardy everywhere. The needles are short and generally bright on the under side. They transplant kindly and should be more generally used. They are nearly all native of the northern country and more handsome in cultivation than in their native soil.

CONCOLOR (White Fir). A very beautiful species with yellow bark on the young branches; leaves green, arranged in double rows; equal in color and beauty to the Colorado Blue Spruce.

DOUGLASI (Douglas Fir). A cone-shaped tree of very light bluish green foliage, even lighter on under side. Very desirable.

Arbor-Vitae

AMERICAN. One of the finest Evergreens for hedges. It grows rapidly and soon forms a most beautiful hedge; very dense. Of course it is never adapted to turn stock, but it forms a most desirable and ornamental screen to divide the lawn from other parts of the ground. 2 ft., \$3.00; 3 ft., \$5.00.

GOLDEN. A beautiful variety of Chinese Arbor-Vitae; compact and globular; color a lively yellowish green; not quite hardy in the North; should be planted in a shady situation, where it will give a brilliant touch of color like sunshine. 2 ft., \$3.00.

PYRAMIDALIS. An exceedingly beautiful, bright variety, resembling the Irish Juniper in form; foliage a deep green, color well retained in Winter; perfectly hardy. Should have a place in every collection. 2 ft., \$3.00; 3 ft., \$5.00.

COMPACTA. Foliage light green; habit dwarf and compact. Fine for small places. 2 ft., \$3.00.

ROSEDALE HYBRID. By far the finest of all Evergreens of this class. A true hybrid between the Golden Arbor-Vitae (*Biota aurea*) and *Retinispora squarrosa*, bearing a striking resemblance to both, as it possesses the fine, feathery foliage of *Retinispora* and the dense, compact, sugarloaf shape of *Biota aurea*. It is a vigorous grower and perfectly hardy; somewhat dwarfish. 2 ft., \$3.00.

GLOBOSA. Forms a dense, low, globe shape. A beautiful Evergreen. Particularly fine for formal plantings. 2 ft., \$3.00.

HOVEY'S GOLDEN. A small tree, globular in form; foliage light green with a golden tinge and very compact; hardy. 2 ft., \$3.00.



Norway Spruce.



Golden Arbor-Vitae.

Juniperus - Junipers or Cedars

This family embraces many different forms and characters. They are pyramidal, erect and spreading; foliage varying in color from light to dark green, to gold and blue. They possess the vigor to establish themselves in any type of soil and will thrive in clay, stony and poorer soils where some Evergreens may fail. Seem to withstand the soot and dust of our cities better than the general Evergreen family. They make a sparse root system requiring extra care in planting and until established. The needles are short and slightly prickly.

VIRGINIANA (Red Cedar). A well known native tree; varies much in habit and color of foliage; very attractive in Winter when the golden bronze of the young growth contrasts with the dark green of the older. 3 ft., \$5.00; 5 ft., \$8.00.

GLAUCA (Grey Cedar). Similar to Red Cedar in form and of a soft gray-blue-green color; closely columnar. 3 ft., \$5.00.

HIBERNICA (Irish Juniper). Of slender columnar habit with glaucous green foliage. Useful for formal plantings. 2 ft., \$3.00; 3 ft., \$5.00.

PITZERIANA (Pfitzer Juniper). A graceful, broad, pyramidal Evergreen with sweeping fronds of gray-green foliage, making in time a distinctive, beautiful tree. 3 ft., \$5.00.

PROCUMBENS (Trailing Juniper). One of the most attractive of the low-growing Junipers, with its long trailing branches covered with numerous short branchlets of glaucous green foliage; admirably adapted for rocky planting or edging about foundation of house or corners. 2 ft., \$5.00.

SABINA (Savin Juniper). Especially suitable for hillside planting or among rocks; like a prostrate shrub in habit, and useful for all low planting. The foliage is deep green and unchanging in its color. 1 ft., \$2.50; 2 ft., \$5.00.

Picea - The Spruces

These are all easy to transplant, and the most popular of the Evergreen family. They are perfectly hardy and grow rapidly and are pyramidal in shape, used for specimens, in groups or for foundation adornment, and as screens, windbreaks or hedges they are equally appropriate. Needles are uniformly short. We have a fine stock of sheared plants that will please every purchaser.

COLORADO BLUE (*Picea pungens glauca*). This species has been tested at various points on the prairies of the West and Northwest with perfect success, enduring a temperature of 30 degrees below zero, in exposed situations, entirely uninjured. This is not only one of the hardiest, but the most beautiful in color and outline; foliage of a rich blue or sage color; it is a valuable acquisition. 2 ft., \$5.00; 3 ft., \$8.00.

HEMLOCK (*Tsuga canadensis*). An elegant pyramidal tree, with drooping branches and delicate dark foliage, like that of the yew. Distinct from all other trees. It is a beautiful lawn tree, and makes a highly ornamental hedge. 2 ft., \$8.00.

NORWAY. A lofty, elegant tree of perfect pyramidal habit, remarkably elegant and rich, and as it gets age, has fine, graceful, pendulous branches; it is exceedingly picturesque and beautiful. Very popular, and deservedly so. One of the best Evergreens for hedges and windbreaks. 1 ft., \$1.00; 2 ft., \$2.00; 3 ft., \$3.00; 4 ft., \$4.00; 5 ft., \$5.00.

Pinus - Pines

Pines seem to grow anywhere, high or low ground, exposed or shaded position, in rich or poor soils, they are at home. After established they grow rapidly and when given space quickly raise their heads and spread their great branches, soon making a wonderful tree. The needles are invariably long and with age droop gracefully. Plant any kind and be assured of getting quick results.

AUSTRIAN OR BLACK (*Pinus austriaca*). A remarkably robust, hardy, spreading tree, leaves long, stiff and dark green; growth rapid; valuable for this country. 2 ft., \$3.00.

SCOTCH (*Pinus sylvestris*). A fine, robust, rapidly growing tree, with stout, erect shoots and silver green foliage. 2 ft., \$3.00.

WHITE (*Pinus Strobus*). The most ornamental of all native Pines; foliage light, delicate or silvery green. 2 ft., \$3.00.

MUGHO (*P. Mugho*). This is an excellent dwarf Pine, being globe shaped and erect branching when the new growth which seems like miniature candles completely covers the bush. 1½ to 2 ft., \$3.00; 2 to 3 ft., \$6.00.

Retinispora

FILIFERA (Thread-branched *Retinispora*). Of unique and showy habit, always noticeable. The leading shoot grows upright, the branches are nearly horizontal, with long, drooping, tasseled ends; pyramidal in outline, bright green.

PISIFERA (Pea-fruited *Retinispora*). Erect branches, pendulous at the tips; foliage feathery, light green, glaucous beneath. 2 ft., \$5.00.

PLUMOSA (Green *Retinispora*). Densely conical, with fern-like leaves of bright green, carried on erect, plummy branches. 2 ft., \$5.00.

PLUMOSA AUREA (Golden *Retinispora*). One of the few really golden Evergreens. The color of the young growth contrasts strongly with the darker shade of the older foliage. Striking and useful in many ways. 2 ft., \$5.00.



Pyramidal Arbor-Vitae.



- | | |
|----------------------------|------------------------------|
| 1 <i>Magna Charta</i> | 6 <i>John Hopper</i> |
| 2 <i>Los Angeles</i> | 7 <i>Marshall P. Wilder</i> |
| 3 <i>Coquette Des Alps</i> | 8 <i>Anna de Diesbach</i> |
| 4 <i>Lady Hillingdon</i> | 9 <i>General Jack</i> |
| 5 <i>Mrs. John Laing</i> | 10 <i>Frau Karl Druschki</i> |