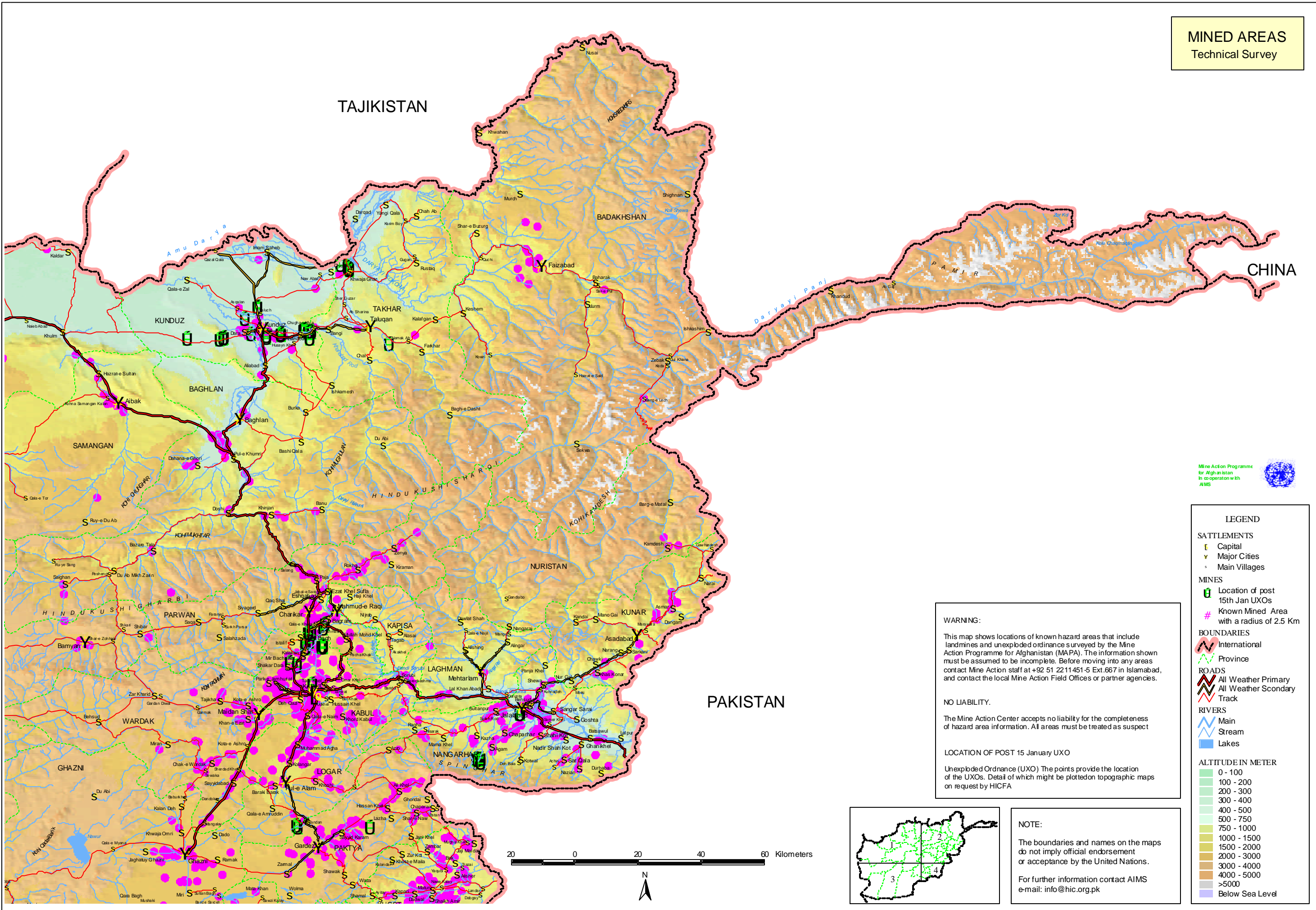


MINED AREAS
Technical Survey



Mine Action Programme for Afghanistan
In co-operation with
AIMS



LEGEND

SATTELMENTS

- Capital
- Major Cities
- Main Villages

MINES

- Location of post 15th Jan UXOs
- Known Mined Area with a radius of 2.5 Km

BOUNDARIES

- International
- Province

ROADS

- All Weather Primary
- All Weather Secondary
- Track

RIVERS

- Main
- Stream
- Lakes

ALTITUDE IN METER

- 0 - 100
- 100 - 200
- 200 - 300
- 300 - 400
- 400 - 500
- 500 - 750
- 750 - 1000
- 1000 - 1500
- 1500 - 2000
- 2000 - 3000
- 3000 - 4000
- 4000 - 5000
- >5000
- Below Sea Level

WARNING:

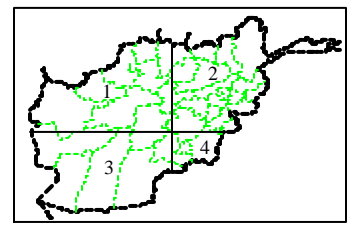
This map shows locations of known hazard areas that include landmines and unexploded ordnance surveyed by the Mine Action Programme for Afghanistan (MAPA). The information shown must be assumed to be incomplete. Before moving into any areas contact Mine Action staff at +92 51 2211451-5 Ext.667 in Islamabad, and contact the local Mine Action Field Offices or partner agencies.

NO LIABILITY.

The Mine Action Center accepts no liability for the completeness of hazard area information. All areas must be treated as suspect

LOCATION OF POST 15 January UXO

Unexploded Ordnance (UXO) The points provide the location of the UXOs. Detail of which might be plotted on topographic maps on request by HICFA



NOTE:

The boundaries and names on the maps do not imply official endorsement or acceptance by the United Nations.

For further information contact AIMS
e-mail: info@hic.org.pk

