

GHQ/SCAP Records (RG 331, National Archives and Records Service)

Description of contents

- (1) Box no. 2916
- (2) Folder title/number: (2)
Hirakata Arsenal (Amanokawa Plant) - Report on
Evaluation of Arsenal
- (3) Date: July 1948
- (4) Subject:
- | Classification | Type of record |
|----------------|----------------|
| 9212, 9230 | k, r |
- (5) Item description and comment:
Osaka
- (6) Reproduction: Yes No
- (7) Film no. Sheet no.

(Compiled by National Diet Library)

REPORT
ON
EVALUATION OF ARSENAL

CODE No 32-31 (A)
NAME OF PLANT AMANOKAWA PLANT HIRAKATA ARSENAL
NAME OF BRANCH _____
ADDRESS NO. 29. OKA. HIRAKATA-SHI OSAKA PREFECTURE

CERTIFICATION

We hereby certify that the evaluation report for this plant has been examined by the undersigned and found to be complete and correct.

DATE 11 JULY, 1951
COPY NUMBER 1

REPORT
ON
INSPECTION OF ARSENALS

32-31 (A)

YOKAWA PLANT HIRAKATA ARSENAL

29. OKA. HIRAKATA-SHI OSAKA PREFECTURE

DESCRIPTION

This is an evaluation report for this
plant by the undersigned and found
correct.

775013

DATE 11 JULY, 1948
COPY NUMBER 4

SENALS

SENAL

EFECTURE

r this
nd found

775013

We
pla
to

HAJIME IKEDA

CHAIRMAN, WORKING EVALUATION COM

AKIRA KURABAYASHI

CHAIRMAN, REGIONAL EVALUATION CO

CHAIRMAN, NATIONAL EVALUATION C

CODE NO

32-31 (A)

NAME OF PLANT

AMANOKAWA PLANT HIRAKATA

NAME OF BRANCH

ADDRESS

NO. 29. OKA. HIRAKATA-SHI

CERTIFICATION

We hereby certify that the evaluation report of the plant has been examined by the undersigned and found to be complete and correct

JI ME IKEDA

MAN, WORKING EVALUATION COMMITTEE

IRA KURABAYASHI

MAN, REGIONAL EVALUATION COMMITTEE

AN, NATIONAL EVALUATION COMMITTEE

PLANT HIRAKATA ARSENAL

HIRAKATA-SHI OSAKA PREFECTURE

tion report for this
undersigned and found

DIRECTOR, STATE PROPERTY BUREAU
MINISTRY OF FINANCE

DIRECTOR, REPARATIONS BOARD

Integrated Facilities	Authorized Use			Special	
	Pages	No. of Machines	Value	Pages	No.
Machine Shop					
Forging Shop					
Heat Treating Shop					
Total					

GENERAL
SUMMARY SHEET

Date 11th July, 1948

A. Plant Code No. 32-31(A)

B. Name of plant Amanokawa Plant Hirakata Arsenal Branch

C. Address No. 29, Oka, Hirakata-shi, Osaka Prefecture Branch

D. Industrial Group Military Arsenal

Major Classification No.	No. of Items	Purchase Price in 1939 Yen	Evaluated Price
<u>I. Available Equipment</u>			
<u>A. Integrated Facilities</u>			
1. Machine Shop	359	1,546,811	656,821
2. Forging Shop	7	20,381	8,386
3. Heat Treating Shop	3	10,480	7,500
B. Miscellaneous Equipment	258	537,572	147,094
C. General Supplies	None	None	None
<u>Total Value of</u>			
<u>Available Equipment</u>	627	2,115,244	819,804

GENERAL
SUMMARY SHEET

Date 11th July, 1948

A. Plant Code No. 32-31(A)
 B. Name of plant Ananokawa Plant Hirakata Arsenal Branch
 C. Address No. 29, Oka, Hirakata-shi, Osaka Prefecture Branch
 D. Industrial Group Military Arsenal

Major Classification No.	No. of Items	Purchase Price in 1939 Yen	Evaluated Price
--------------------------	--------------	----------------------------	-----------------

II. Non-removable Equipment and Value

D. Authorized Use	None	None	None
E. Special Purpose	None	None	None
F. Restitution Items	19	43,995	11,972
G. Exempted Facilities	15	16,218	7,434
H. Equipment Use			
by Occupation Forces	None	None	None
I. Non-removable Equipment		---	21,412
J. Non-removable Value		---	16,595
<u>Total Value of</u>			
<u>Non-removable Equipment</u>	34	60,213	57,413
<u>GRAND TOTAL VALUE</u>	661	2,175,457	877,581

SUMMARY SHEET

Date 11th July, 1948

A. Plant Code No. 32-34(A)
 B. Name of Plant Amanokawa Plant Hirakata Arsenal Branch
 C. Address No. 29, Oka, Hirakata-shi, Osaka Prefecture Branch
 D. Industrial Group Military Arsenal

Major Classification No.	No. of Items	Purchase Price in 1939 Yen	Evaluated Price
<u>I. Available Equipment</u>			
A. Integrated Facilities Section	369	1,577,677	672,716
1. Machine Shop	359	1,546,811	656,824
a. Mechanical Press	(8)	(11,497)	(4,738)
b. Boring Machine	(1)	(35,520)	(27,036)
c. Drilling Machine	(20)	(14,487)	(9,161)
d. Gear Hobber	(3)	(21,400)	(16,683)
e. Grinder	(31)	(140,772)	(94,128)
f. Lathe	(216)	(99,901)	(349,691)
g. Milling Machine	(43)	(230,495)	(167,230)
h. Planer	(1)	(5,960)	(1,044)
i. Shaper	(2)	(7,600)	(4,386)
j. Slotter	(1)	(3,400)	(1,824)
k. Polishing Machine	(1)	(400)	(318)
l. Sawing and Cut-off	(3)	(3,902)	(1,787)
m. Line Shafting	(18)	(50,907)	(33,056)
n. Others	(11)	(12,070)	(7,002)
2. Forging Shop	7	20,861	8,386
a. Forging Machine	(1)	(7,500)	(4,940)
b. Mechanical Press	(1)	(8,499)	(1,274)
c. Welding Machine	(1)	(2,500)	(1,715)
d. Furnace	(1)	(1,277)	(87)
e. Line Shafting	(1)	(1,341)	(230)

SUMMARY SHEET

Date 11th July, 1948

A. Plant Code No. 32-31(A)
 B. Name of Plant Amakawa Plant Hirakata Arsenal Branch
 C. Address No. 29, Oka, Hirakata-shi, Osaka Prefecture Branch
 D. Industrial Group Military Arsenal

Major Classification No.	No. of Items	Purchase Price in 1939 Yen	Evaluated Price
<u>I. Available Equipment (Cont.)</u>			
A. Integrated Facilities Section (Cont.)			
2. Forging Shop (Cont.)			
c. Others	(2)	(264)	(140)
3. Heat Treating Shop			
a. Furnace	(3)	(10,480)	(7,500)
B. Miscellaneous Equipment Section	258	537,572	147,094
1. Machine Tools and			
Metal Working Equipment			
a. Manual Press	(24)	(976)	(249)
b. Drilling Machine	(10)	(3,208)	(477)
c. Shearing Machine	(1)	(124)	(69)
d. Grinder	(1)	(31,000)	(15,854)
e. Lathe	(137)	(420,357)	(93,606)
f. Milling Machine	(26)	(37,282)	(15,392)
g. Shaper	(1)	(2,271)	(340)
h. Others	(56)	(42,354)	(21,107)
C. Supplies Section	None	None	None
Total Value of			
Available Equipment			
	627	2,115,244	819,804

SUMMARY SHEET

Date 11th July, 1948

A. Plant Code No. 32-31(A)
 B. Name of Plant Amanokawa Plant Hirakata Arsenal Branch _____
 C. Address No. 29, Oka, Hirakata, shi, Osaka Prefecture Branch _____
 D. Industrial Group Military Arsenal

Major Classification No.	No. of Items	Purchase Price in 1939 Yen	Evaluated Price
--------------------------	--------------	----------------------------	-----------------

II. Removable Equipment for Future Disposition

D. Authorized Use Section	None	None	None
E. Special Purpose Section	None	None	None
F. Rectitution Items Section	19	47,995	14,972
G. Exempted Equipment Section	15	12,216	7,438
H. Used by the Occupation Forces Section	None	None	None

Total Value of Removable Equipment for Future Disposition 34 60,211 19,410

III. Non-removable Equipment Section

I. Non-removable Equipment
 Total Non-removable Equipment --- 21,412

IV. Non-removable Value

J. Non-removable Value --- 16,959

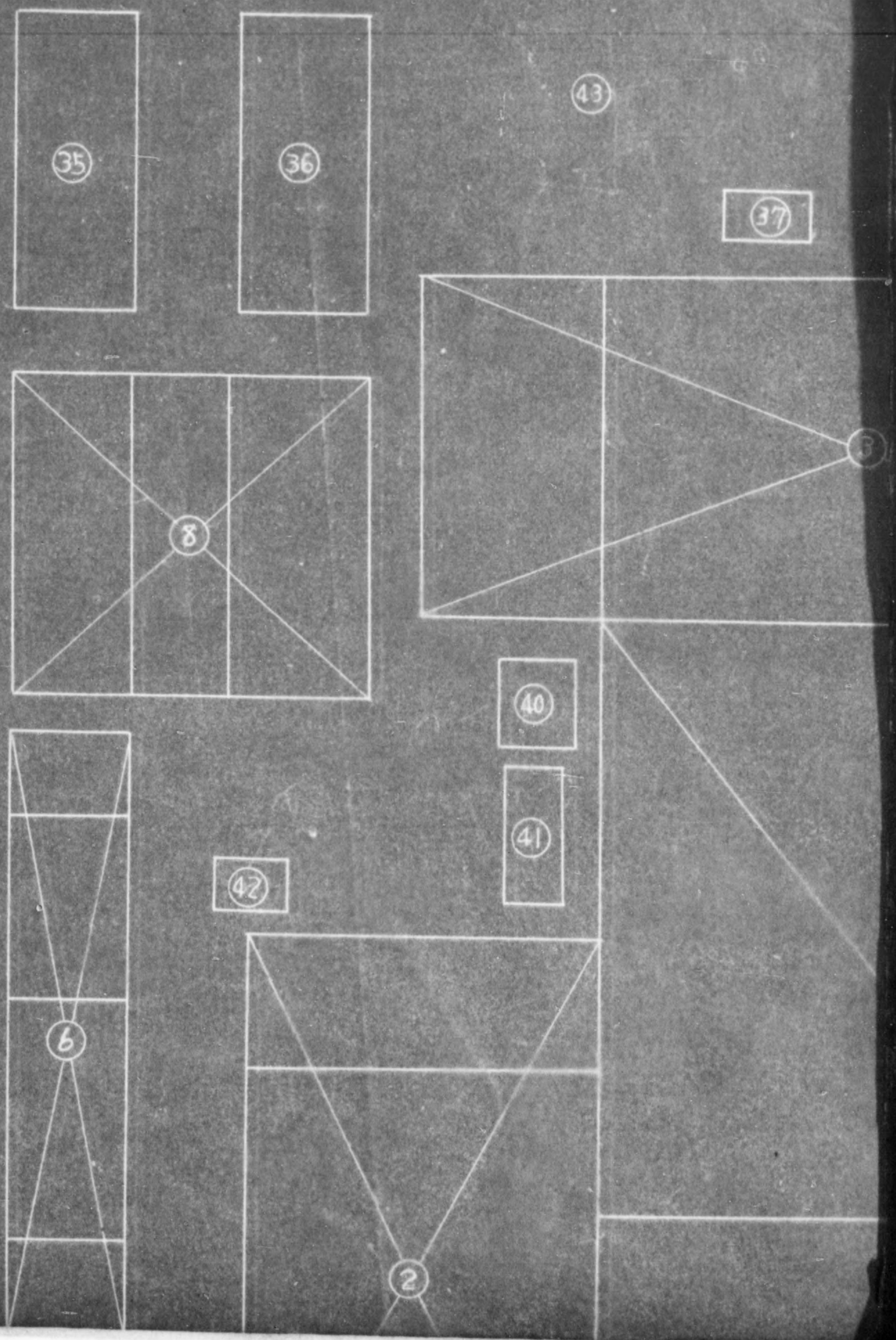
V. Total Others

K. Office Furniture and Equipment in Authorized Use	None	None
L. Building	None	None
M. Civil Engineering Works	None	None
N. Improvements	None	None
Total Value V.	None	None

GRAND TOTAL VALUE

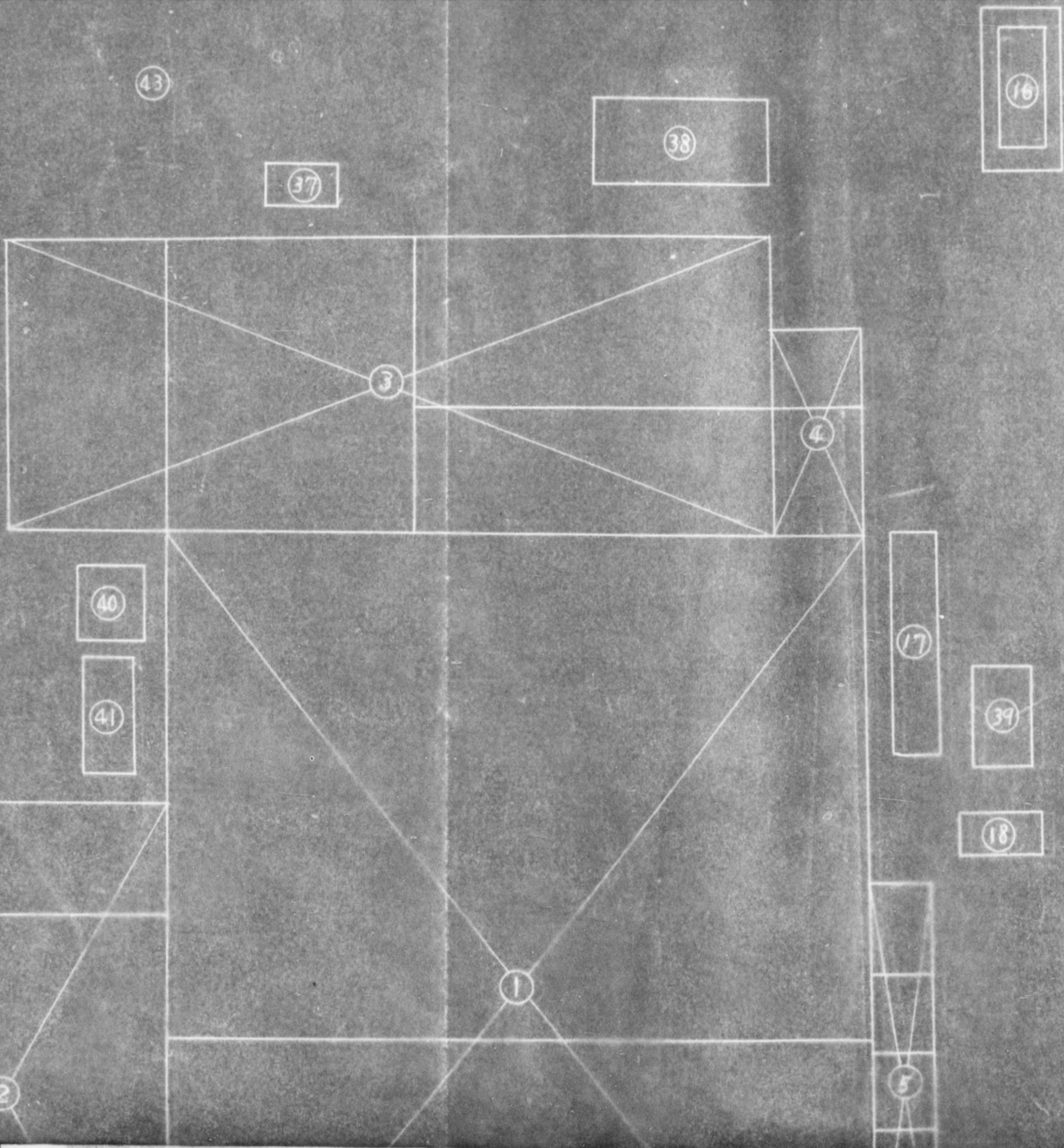
775013

32-31(A) AMANOKAWA PL

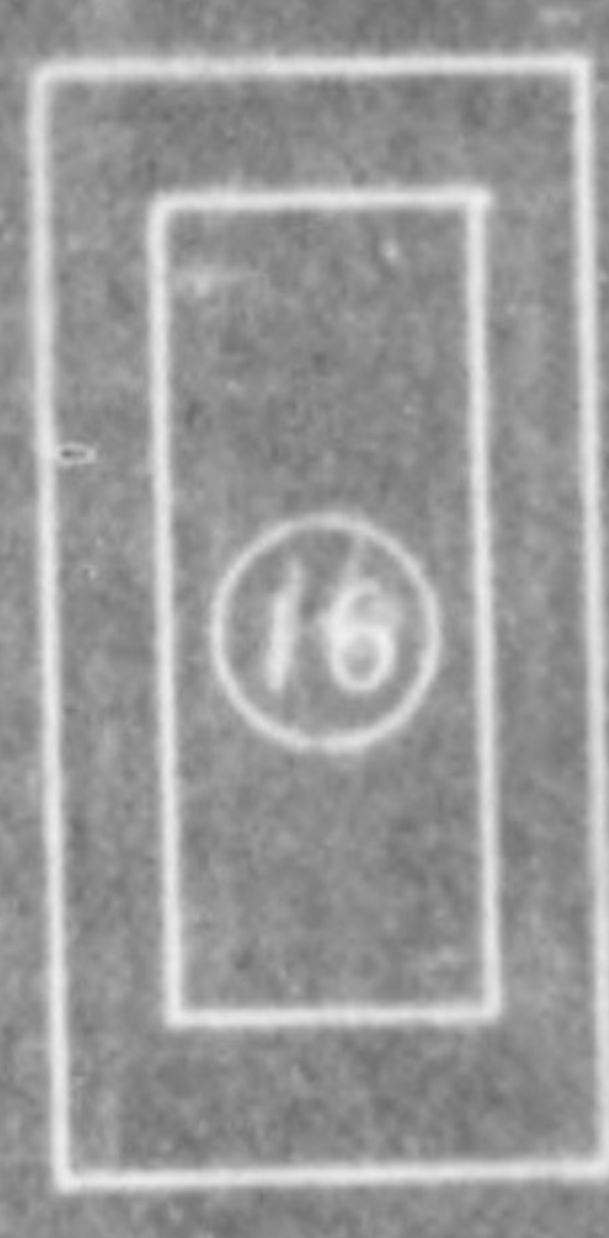


A) AMANOKAWA PLANT HIRAKATA ARSENAL.

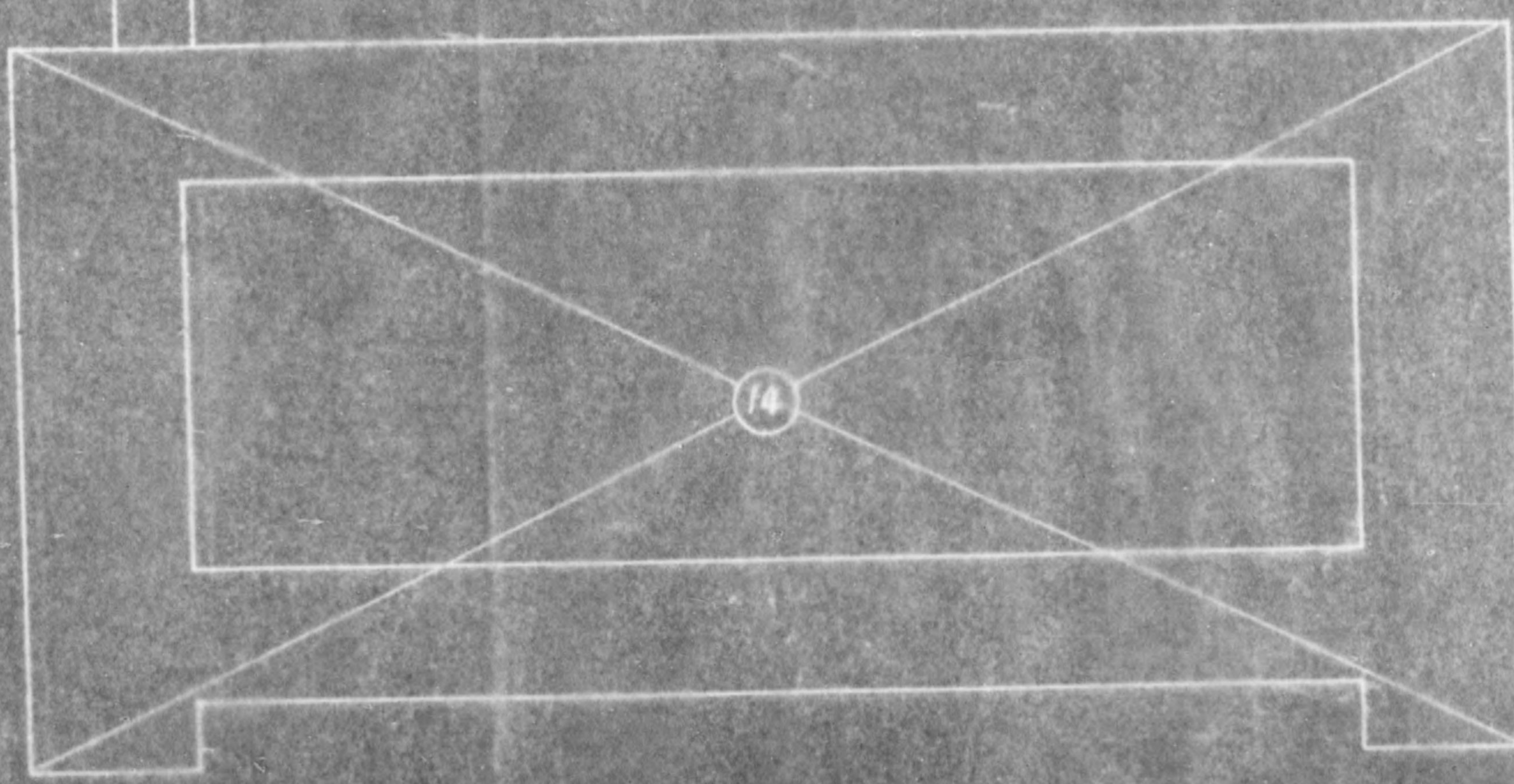
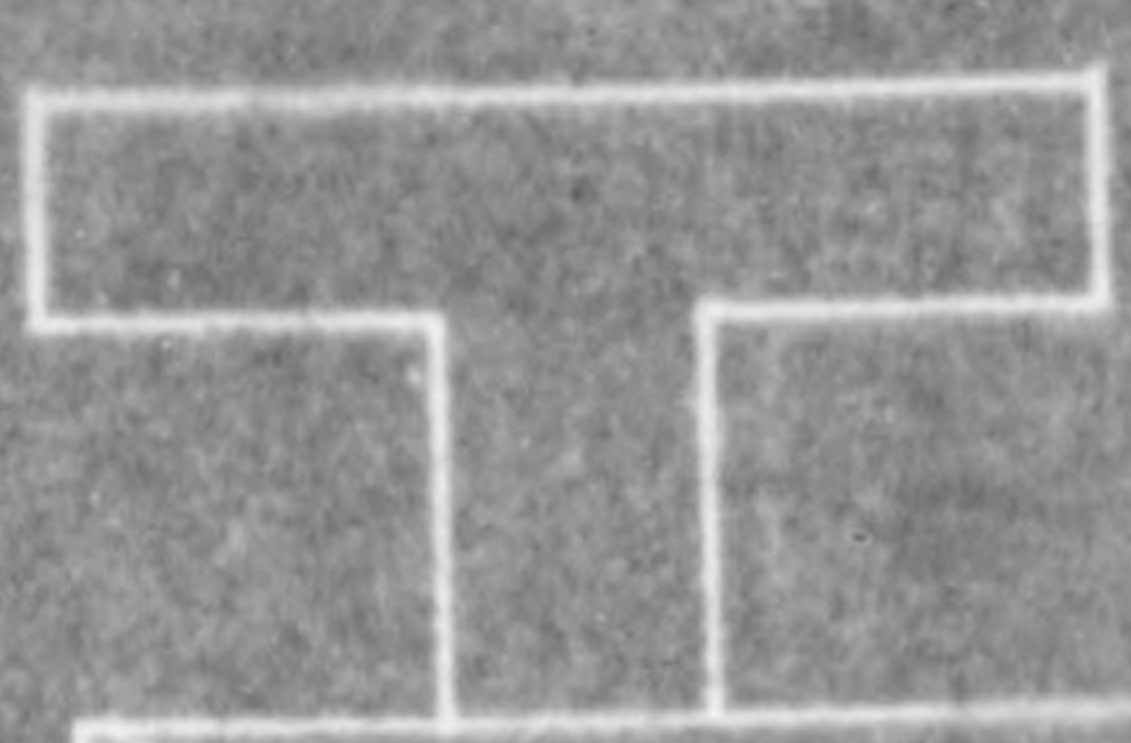
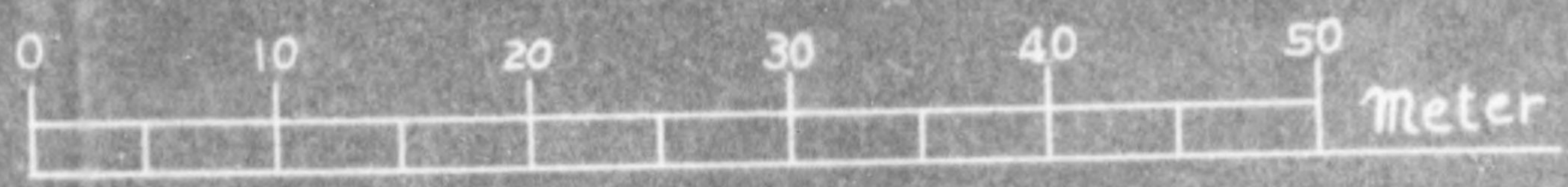
Located



Located No. 29, OKA, HIRAKATA-SHI, OSAKA PREFECTURE,



$\frac{1}{500}$



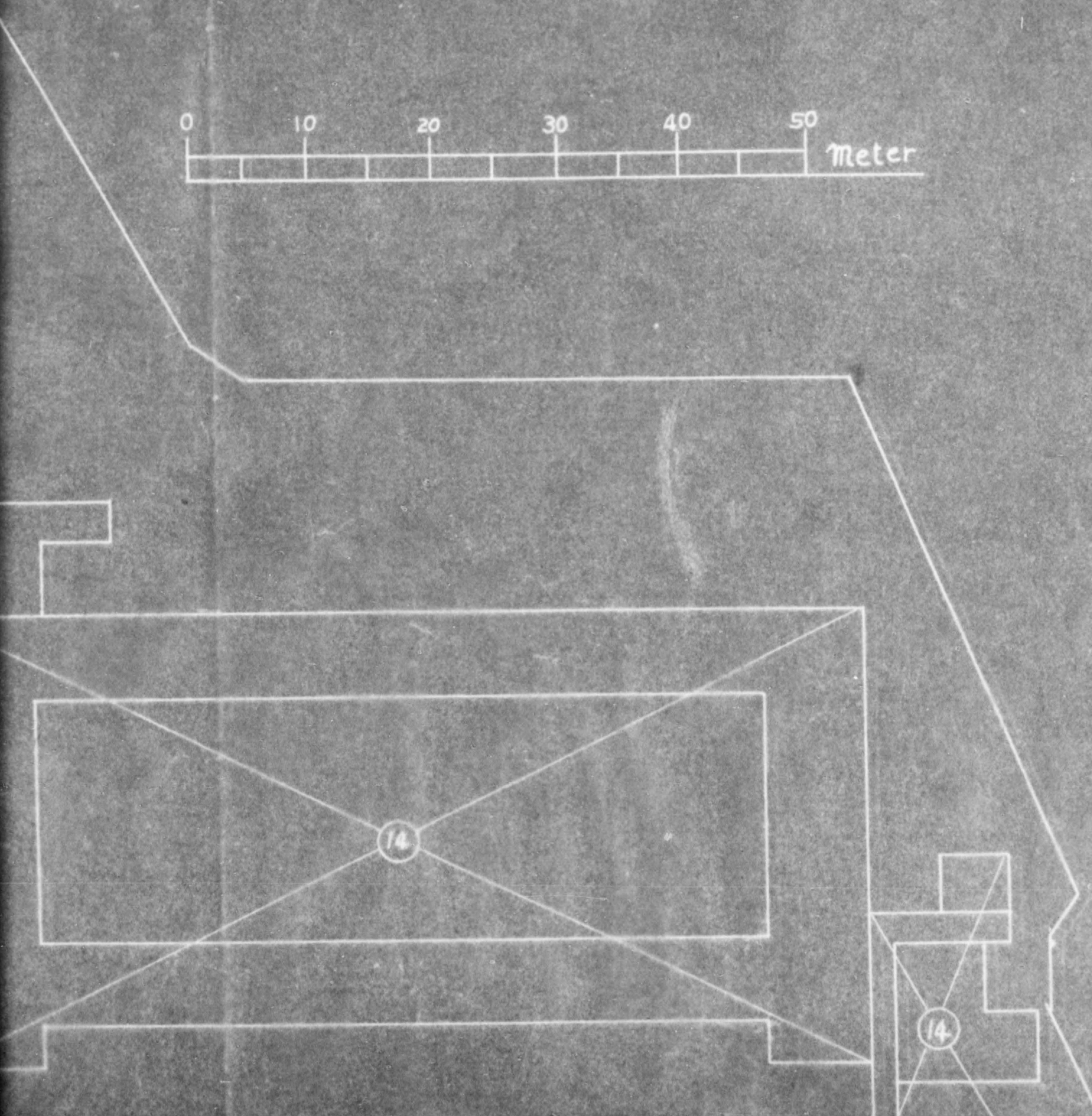
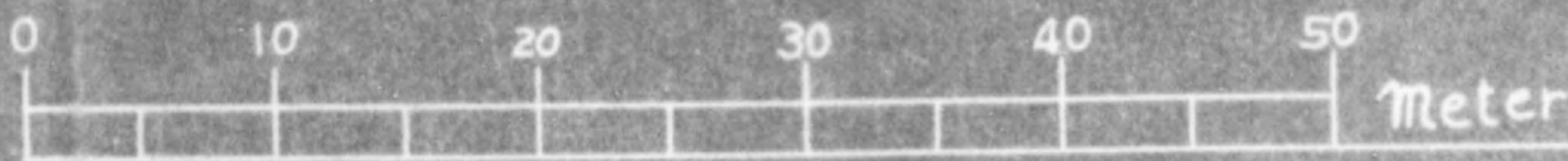
17

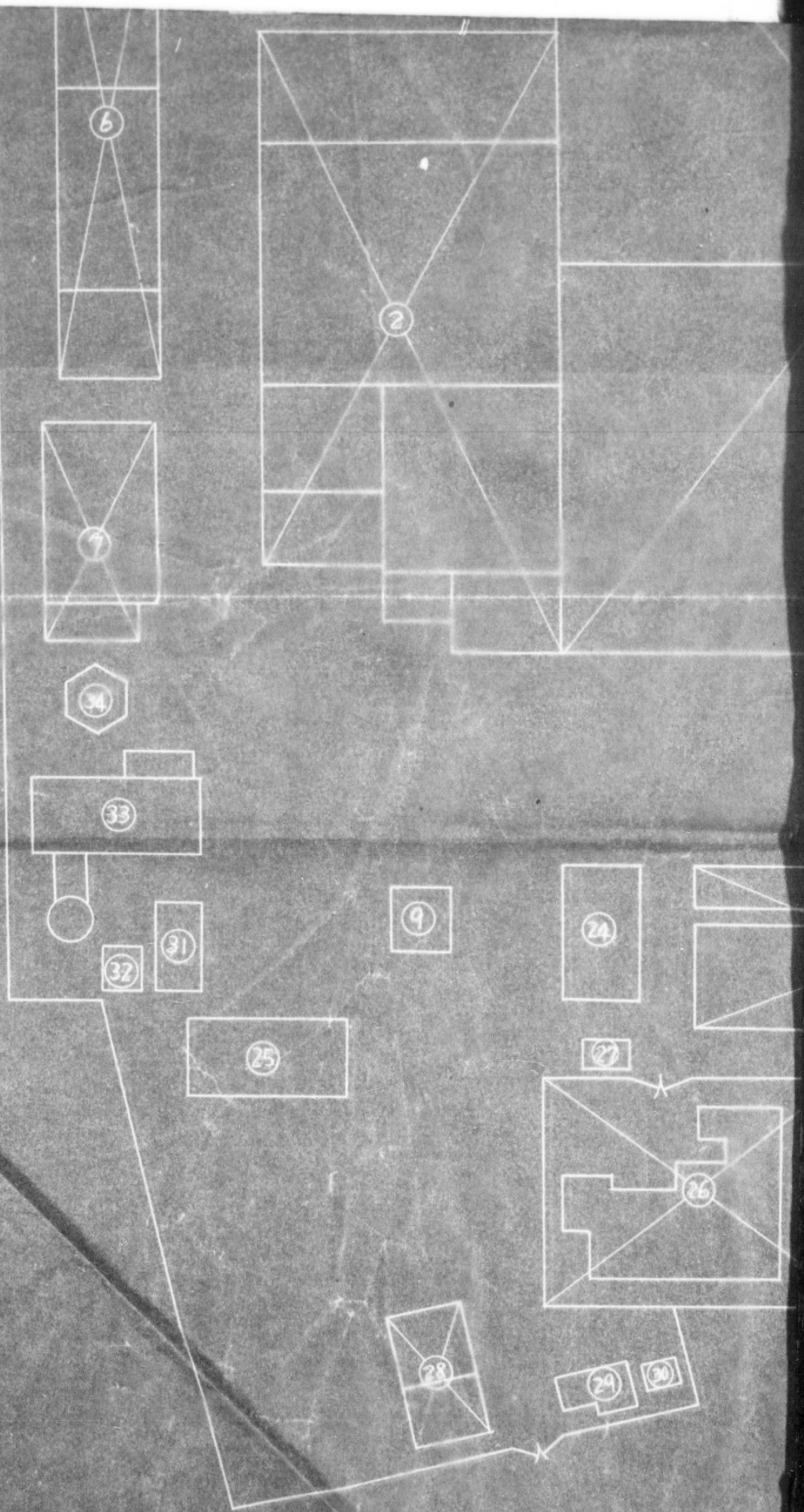


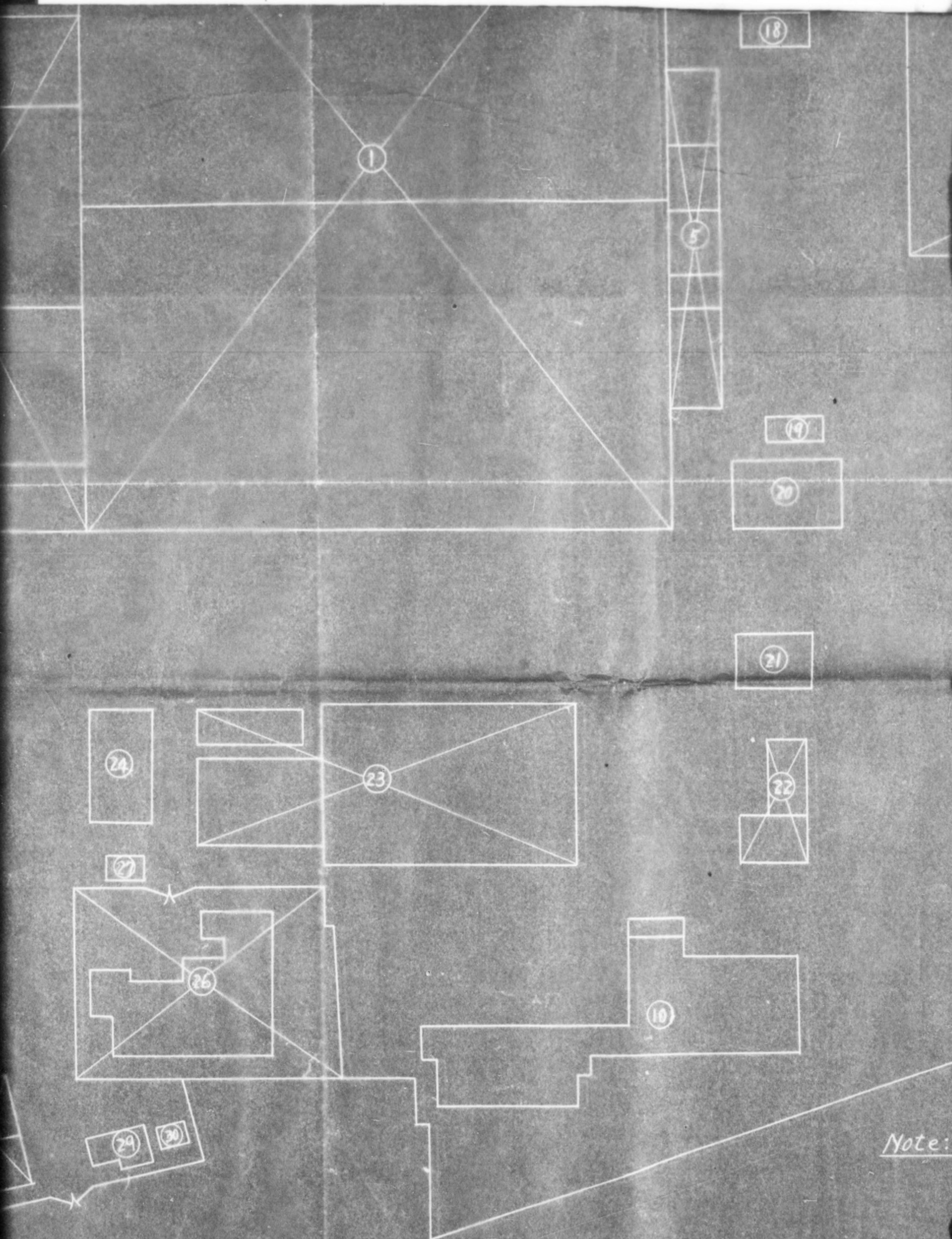
HIRAKATA-SHI, OSAKA PREFECTURE,
OKA, HIRAKATA-SHI, OSAKA PREFECTURE,

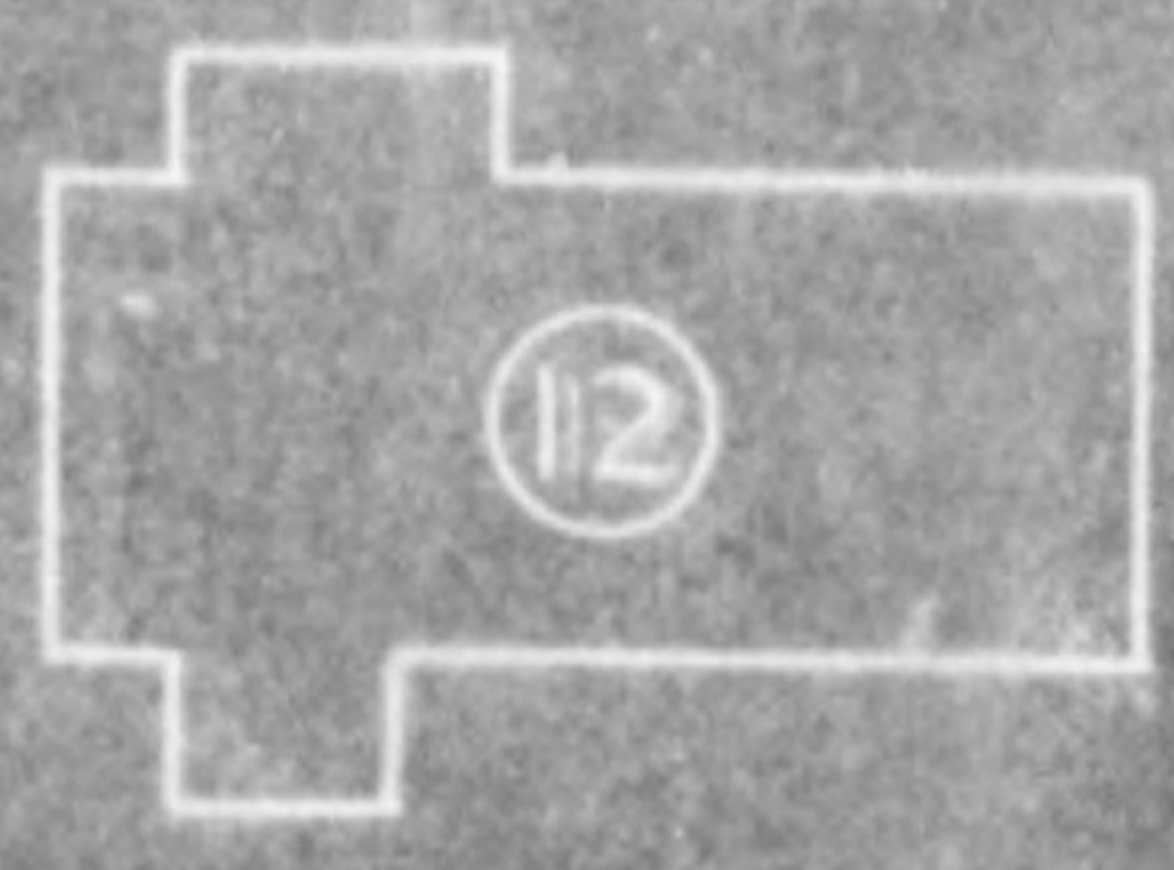
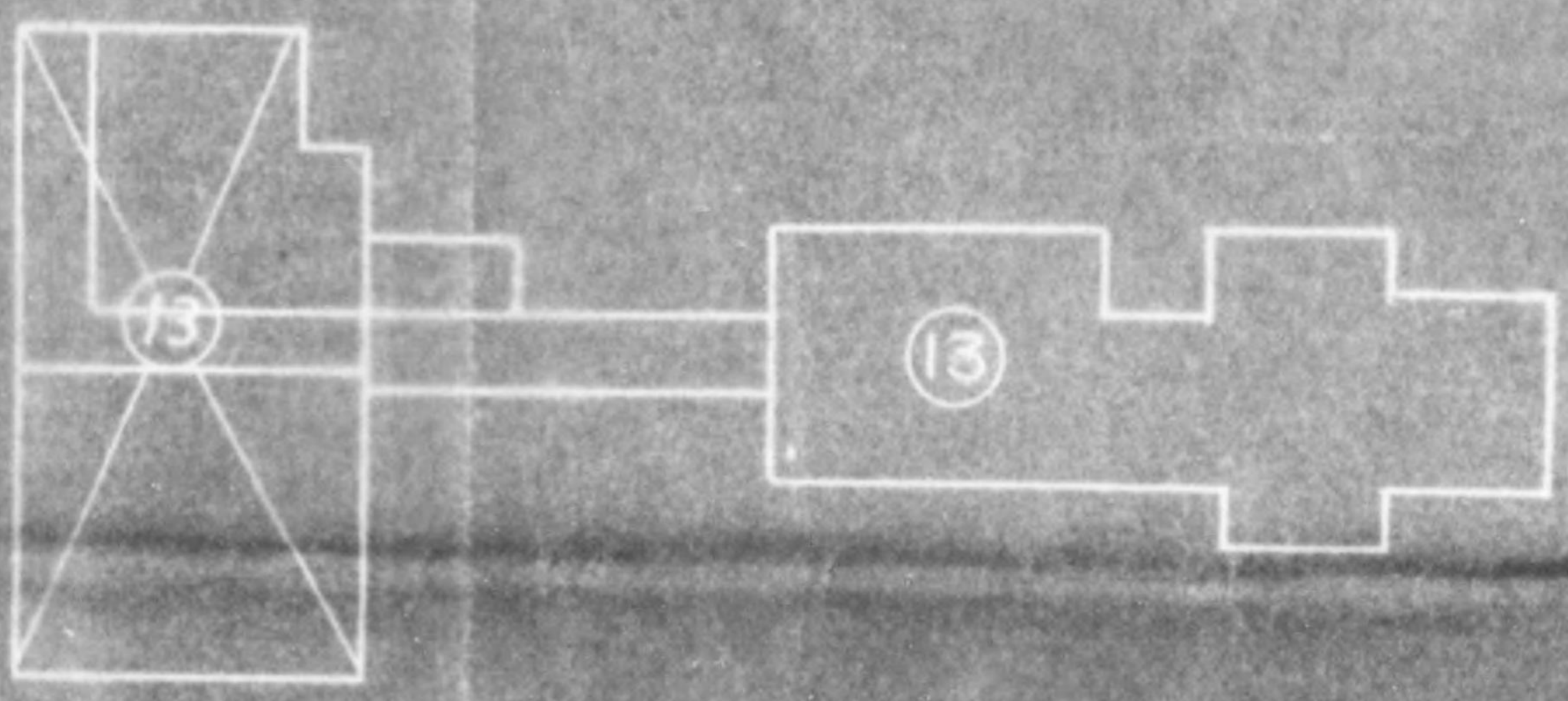
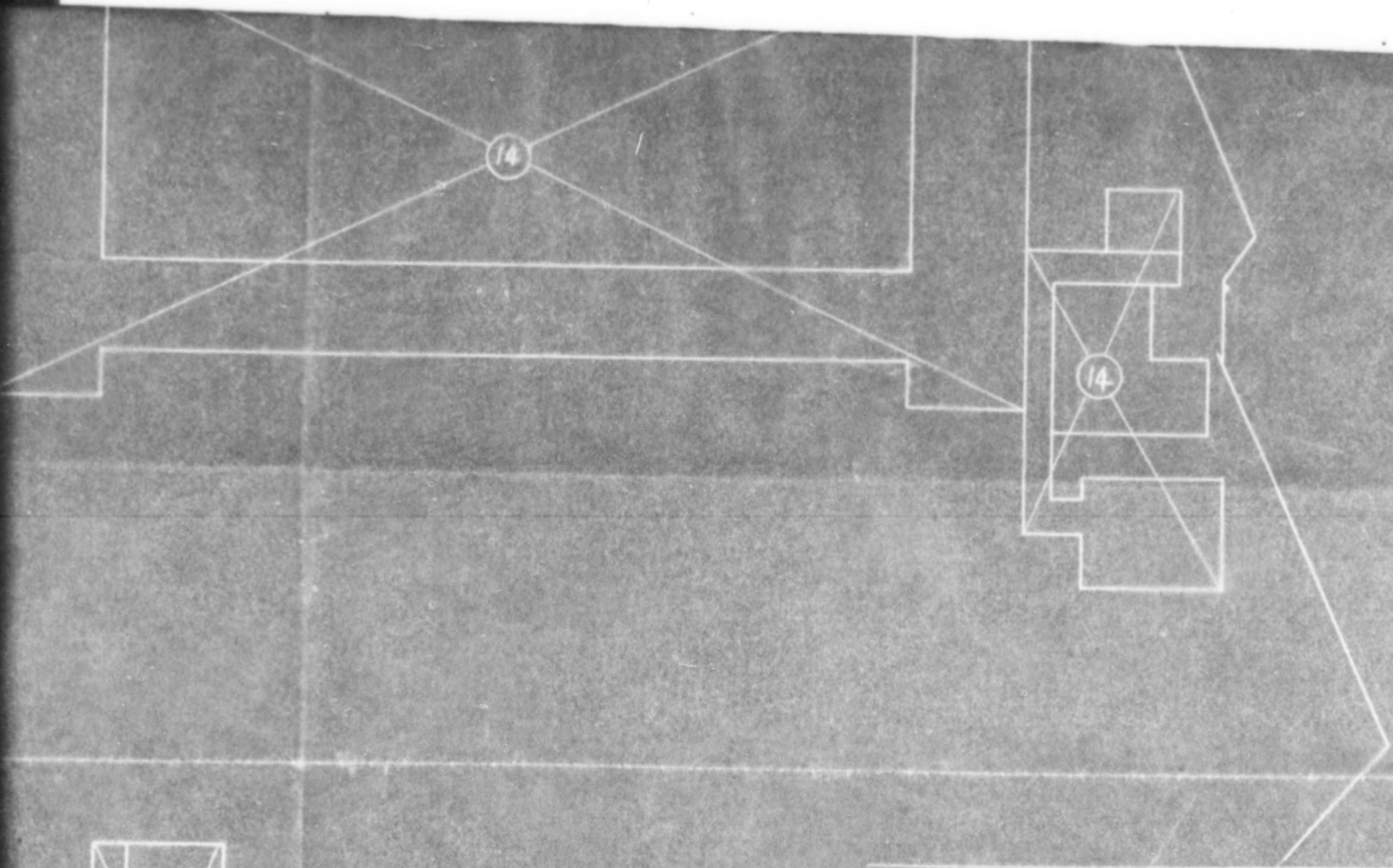


$\frac{1}{500}$









NO.	Name	NO.	Name
1	Machine Shop	26	Boarding House
2	Machine Shop & Tool Room	27	W. C.
3	Press Works & Assembly Shop	28	Garage
4	Painting Room	29	Guard Room
5	Machine Shop	30	W. C.
6	Folding Shop & Heat Treating Shop	31	Ware House
7	Wood Working Shop	32	Ware House
8	Material Store	33	Boiler Room
9	Oil House	34	Water Tank
10	Study Hall	35	Material Store
11	Guard Room	36	Material Store
12	Boarding House	37	W. C.
13	Office	38	Ware House
14	Boarding House	39	Transformer Stand
15	Oil Room	40	Transformer Stand
16	Ware House	41	W. C.
17	W. C.	42	Office
18	W. C.	43	Field
19	W. C.		
20	Ware House		
21	Office		
22	Ware House		
23	Dining Hall		
24	Cooking Office		
25	Moulding Shop		

e: The Buildings in the Layout are in the possession of Kurashiki Spinning Co. Ltd., and in war time were lent to the military arsenal.

A CODE NUMBER 32 - 31 (A)
 B NAME OF PLANT AMANOKAWA PLANT HIRAKATA ARSENAL
 C LOCATION NO 29, OKA, HIRAKATA-SHI, OSAKA PREFECTURE
 D INDUSTRIAL GROUP MILITARY ARSENAL
 E SECTION OF EVALUATION INTEGRATED FACILITY
 F TYPE OF FACILITY MACHINE SHOP

Item No.	Qty	Inventory No.	Name-Type-Specifications Accessories & Spare parts	Weight (Kg)	Packing Size Length Width Height (cm)
BROUGHT FORWARD					
1	1	37	Lathe Swing Over Bed 420mm Swing Over Carriage 306mm Engine Distance Between Centers 840mm Bed Length 2000mm Feed Change System Quick Head No. of Spindle Speeds 8 I.M.D. A.C. 3HP 60 ~ 220V 1,720 R.P.M.	1,250	L 220 W 90 H 120
2	1	38	Lathe Swing O. B. 420mm Swing O. C. 306mm Engine Distance B. C. 840mm Bed L. 2000mm Feed C. S. Quick H. No. of S.S. 8 I.M.D. A.C. 3HP 60 ~ 220V 1,720 R.P.M.	1,250	L 220 W 90 H 120
3	1	39	Lathe Swing O. B. 430mm Swing O. C. 280mm Engine Distance B. C. 760mm Bed L. 1,950mm Feed C. S. Quick H. No. of S.S. 12 I.M.D. A.C. 5HP 60 ~ 220V 1,730 R.P.M.	1,300	L 215 W 110 H 130
4	1	47	Lathe Swing O. B. 280mm Swing O. C. 160mm Engine Distance B. C. 420mm Bed L. 1,100mm Feed C. S. Quick H. No. of S.S. 8 I.M.D. A.C. 1HP 60 ~ 220V 940 R.P.M.	550	L 140 W 50 H 120
5	1	48	Lathe Swing O. B. 280mm Swing O. C. 160mm Engine Distance B. C. 420mm Bed L. 1,100mm Feed C. S. Quick H. No. of S.S. 8 I.M.D. A.C. 1HP 60 ~ 220V 940 R.P.M.	550	L 140 W 50 H 120
6	1	49	Lathe Swing O. B. 280mm Swing O. C. 160mm Engine Distance B. C. 420mm Bed L. 1,100mm Feed C. S. Quick H. No. of S.S. 8 I.M.D. A.C. 1HP 60 ~ 220V 940 R.P.M.	550	L 140 W 50 H 120
7	1	50	Lathe Swing O. B. 280mm Swing O. C. 160mm Engine Distance B. C. 420mm Bed L. 1,100mm Feed C. S. Quick H. No. of S.S. 8 I.M.D. A.C. 1HP 60 ~ 220V 940 R.P.M.	550	L 140 W 50 H 120

ARSENAL
REFECTURE

PLANT EVALUATION

ITY

R E M O V A B L E

5	6	7	8	9	9A	10	11	12	13	14	15	D	
Weight (Kg)	Packing Size Length Width Height (cm)	Maker and Country	Year-Made-or Installed	DON'T USE	Original Cost	Purchase Price of Removable Equipment	Conversion Factor	Purchase Price 1939 Yen	Life Expectancy	Future Life	Salvage Value	Depreciation Factor	D
0					0	0		0					
1,250	L 220 W 90 H 120	OKUMA JAPAN	1938		⑤ 6,321	6,020	95.8	5,767	25	15	15	66.0	
1,250	L 220 W 90 H 120	OKUMA JAPAN	1938		⑤ 6,321	6,020	95.8	5,767	25	15	15	66.0	
1,300	L 215 W 110 H 130	OSAKA KIKO JAPAN	1939		⑤ 6,982	6,650	100.0	6,650	25	16	15	69.4	4
550	L 140 W 50 H 120	RIKEN JAPAN	1942		⑤ 3,769	3,590	81.5	2,925	25	19	15	79.6	2
550	L 140 W 50 H 120	RIKEN JAPAN	1942		⑤ 3,769	3,590	81.5	2,925	25	19	15	79.6	2
550	L 140 W 50 H 120	RIKEN JAPAN	1942		⑤ 3,769	3,590	81.5	2,925	25	19	15	79.6	2
550	L 140 W 50 H 120	RIKEN JAPAN	1942		⑤ 3,769	3,590	81.5	2,925	25	19	15	79.6	2

SHEET / OF 68 SHEETS

DATE // JULY 1948

13 Life	14 Salvage Value	15 Depreciation Factor	16 Depreciated Value	17 Other Deductions	18 Reason-For Other Deductions	19 Deduction Yen	20 Total Extra Deduction Yen	21 Total Depreciated Value	NON-REMOVABLE	
									22 Non-Removable Equipment	23 Non-Removable Value
			0					0	0	0
15	15	66.0	3,806	Steady Rest	Missing	80	193	3,613	114	76
				Chuck	Missing	63				
				Small Parts	Missing	50				
15	15	66.0	3,806	Steady Rest	Missing	80	193	3,613	114	76
				Chuck	Missing	63				
				Small Parts	Missing	50				
16	15	69.4	4,615	Motor	Missing	200	410	4,205	138	92
				16 Change Gears	Missing	110				
				Face Plate	Missing	50				
				Small Parts	Missing	50				
19	15	79.6	2,328	Chuck	Missing	52	104	2,224	69	46
				6 Change Gears	Missing	48				
				Chuck Handle	Missing	2				
				Small Parts	Missing	2				
19	15	79.6	2,328	Clutch	Damaged	15	72	2,256	69	46
				Clutch Handle	Missing	5				
				6 Change Gears	Missing	50				
				Small Parts	Missing	2				
19	15	79.6	2,328	Chuck	Missing	52	86	2,242	69	46
				Handle	Missing	2				
				Feed Change System	Damaged	30				
				Clutch	Missing	2				
19	15	79.6	2,328	Chuck	Missing	52	99	2,229	69	46
				Spindle Metal	Missing	15				
				Clutch	Missing	2				
				Feed Change System	Damaged	30				

4	1	47	Lathe Swing O. B. 280mm. Swing O. C. 160mm. Engine Distance B. C. 420mm Bed L. 1,100mm. Feed C. S. Quick H. No. of S.S. 8 IMD. A.C. 1HP 60 ~ 220V 940 R.P.M.	L 140 550 W 50 H 120
5	1	48	Lathe Swing O. B. 280mm. Swing O. C. 160mm. Engine Distance B. C. 420mm Bed L. 1,100mm. Feed C. S. Quick H. No. of S.S. 8 IMD. A.C. 1HP 60 ~ 220V 940 R.P.M.	L 140 550 W 50 H 120
6	1	49	Lathe Swing O. B. 280mm. Swing O. C. 160mm. Engine Distance B. C. 420mm Bed L. 1,100mm. Feed C. S. Quick H. No. of S.S. 8 IMD. A.C. 1HP 60 ~ 220V 940 R.P.M.	L 140 550 W 50 H 120
7	1	50	Lathe Swing O. B. 280mm. Swing O. C. 160mm. Engine Distance B. C. 420mm Bed L. 1,100mm. Feed C. S. Quick H. No. of S.S. 8 IMD. A.C. 1HP 60 ~ 220V 940 R.P.M.	L 140 550 W 50 H 120
8	1	51	Lathe Swing O. B. 280mm. Swing O. C. 160mm. Engine Distance B. C. 420mm Bed L. 1,100mm. Feed C. S. Quick H. No. of S.S. 8 IMD. A.C. 1HP 60 ~ 220V 940 R.P.M.	L 140 550 W 50 H 120
9	1	52	Lathe Swing O. B. 280mm. Swing O. C. 160mm. Engine Distance B. C. 420mm Bed L. 1,100mm. Feed C. S. Quick H. No. of S.S. 8 IMD. A.C. 1HP 60 ~ 220V 940 R.P.M.	L 140 550 W 50 H 120
10	1	53	Lathe Swing O. B. 280mm. Swing O. C. 160mm. Engine Distance B. C. 420mm Bed L. 1,100mm. Feed C. S. Quick H. No. of S.S. 8 IMD. A.C. 1HP 60 ~ 220V 940 R.P.M.	L 140 550 W 50 H 120

NOTES: NO DATES Allowed in Spaces

Crossing All Spaces Not Used (As Shown Above)

Page-Total

Cumulative-Total

7850

7650

550	L 140 W 50 H 120	RIKEN JAPAN 1942	ⓔ 3,769	3,590	81.5	2,925	25	19	15	79.6
550	L 140 W 50 H 120	RIKEN JAPAN 1942	ⓔ 3,769	3,590	81.5	2,925	25	19	15	79.6
550	L 140 W 50 H 120	RIKEN JAPAN 1942	ⓔ 3,769	3,590	81.5	2,925	25	19	15	79.6
550	L 140 W 50 H 120	RIKEN JAPAN 1942	ⓔ 3,769	3,590	81.5	2,925	25	19	15	79.6
550	L 140 W 50 H 120	RIKEN JAPAN 1942	ⓔ 3,769	3,590	81.5	2,925	25	19	15	79.6
550	L 140 W 50 H 120	RIKEN JAPAN 1942	ⓔ 3,769	3,590	81.5	2,925	25	19	15	79.6
550	L 140 W 50 H 120	RIKEN JAPAN 1942	ⓔ 3,769	3,590	81.5	2,925	25	19	15	79.6
7650			46,007	43,820		38,659				
7650			46,007	43,820		38,659				

19	15	79.6	2,328	Small Parts Missing	50				
				Chuck Missing	52				
				6 Change Gears Missing	48	104	2,224	69	46
				Chuck Handle Missing	2				
				Small Parts Missing	2				
19	15	79.6	2,328	Clutch Damaged	15				
				Clutch Handle Missing	5	72	2,256	69	46
				6 Change Gears Missing	50				
				Small Parts Missing	2				
19	15	79.6	2,328	Chuck Missing	52				
				Handle Missing	2	86	2,242	69	46
				Feed Change System Damaged	30				
				Clutch Missing	2				
19	15	79.6	2,328	Chuck Missing	52				
				Spindle Metal Missing	15	99	2,229	69	46
				Clutch Missing	2				
				Feed Change System Damaged	30				
				Clutch Damaged	15				
19	15	79.6	2,328	Small Parts Missing	2	17	2,311	69	46
19	15	79.6	2,328	Chuck Missing	52				
				1 Change Gears Missing	88	142	2,186	69	46
				Clutch Missing	2				
19	15	79.6	2,328	Clutch Damaged	30				
				Clutch Handle Missing	5	78	2,250	69	46
				5 Change Gears Missing	40				
				Small Parts Missing	3				
			28,523				27,129	849	566
			28,523				27,129	849	566

A CODE NUMBER 32 - 31 (A)
 B NAME OF PLANT AMANOKAWA PLANT HIRAKATA ARSENAL
 C LOCATION NO 29, OKA, HIRAKATA-SHI, OSAKA PREFECTURE
 D INDUSTRIAL GROUP MILITARY ARSENAL
 E SECTION OF EVALUATION INTEGRATED FACILITY
 F TYPE OF FACILITY MACHINE SHOP

1	2	3	4	5	6
Item No.	Bldg. No.	Inventory No.	Name-Type-Specifications Accessories & Spare parts	Weight (Kg)	Packing Size Length Width Height (cm)
BROUGHT FORWARD				7.650	
11	1	54	Lathe Swing Over Bed 280mm Swing over Carriage 160mm Engine Distance Between Centers 420mm Bed Length 1100mm Feed change System Quick Hand No. of Spindle Speeds I.M.D. A.C. 1HP 60 ~ 220V 940 R.P.M.	550	L 140 W 50 H 120
12	1	55	Lathe Swing O.B. 280mm Swing O.C. 160mm Engine Distance B.C. 420mm Bed L. 1100mm Feed C.S. Quick H. No. of S.S. 8 I.M.D. A.C. 1HP 60 ~ 220V 940 R.P.M.	550	L 140 W 50 H 120
13	1	56	Lathe Swing O.B. 280mm Swing O.C. 160mm Engine Distance B.C. 420mm Bed L. 1100mm Feed C.S. Quick H. No. of S.S. 8 I.M.D. A.C. 1HP 60 ~ 220V 940 R.P.M.	550	L 140 W 50 H 120
14	1	57	Lathe Swing O.B. 280mm Swing O.C. 160mm Engine Distance B.C. 420mm Bed L. 1100mm Feed C.S. Quick H. No. of S.S. 8 I.M.D. A.C. 1HP 60 ~ 220V 940 R.P.M.	550	L 140 W 50 H 120
15	1	58	Lathe Swing O.B. 280mm Swing O.C. 160mm Engine Distance B.C. 420mm Bed L. 1100mm Feed C.S. Quick H. No. of S.S. 8 I.M.D. A.C. 1HP 60 ~ 220V 940 R.P.M.	550	L 140 W 50 H 120
16	1	59	Lathe Swing O.B. 280mm Swing O.C. 160mm Engine Distance B.C. 420mm Bed L. 1100mm Feed C.S. Quick H. No. of S.S. 8 I.M.D. A.C. 1HP 60 ~ 220V 940 R.P.M.	550	L 140 W 50 H 120
17	1	75	Lathe Swing O.B. 420mm Swing O.C. 240mm Engine Distance B.C. 780mm Bed L. 1900mm Feed C.S. Quick H. No. of S.S. 8 I.M.D. A.C. 3HP 60 ~ 220V 1720 R.P.M.	1.350	L 220 W 90 H 90
		74	Lathe Swing O.B. 420mm Swing O.C. 240mm Engine Distance B.C. 780mm Bed L. 1900mm Feed C.S. Quick H. No. of S.S. 8 I.M.D. A.C. 3HP 60 ~ 220V 1720 R.P.M.	1.350	L 220 W 90 H 90

ARSENAL
PREFECTURE

PLANT EVALUATION

CITY

R E M O V A B L E

5	6	7	8	9	9A	10	11	12	13	14	15	
Weight (Kg)	Packing Size Length Width Height (cm)	Maker and Country	Year-Made-or Installed	DONT USE	Original Cost	Purchase Price of Removable Equipment	Conversion Factor	Purchase Price 1939 Yen	Life Expectancy	Future Life	Salvage Value	Depreciation Factor
7.650					46,007	43,820		38,659				
550	L 140 W 50 H 120	RIKEN JAPAN	1942		⑤ 3,769	3,590	81.5	2,925	25	19	15	79.6
550	L 140 W 50 H 120	RIKEN JAPAN	1942		⑤ 3,769	3,590	81.5	2,925	25	19	15	79.6
550	L 140 W 50 H 120	RIKEN JAPAN	1942		⑤ 3,769	3,590	81.5	2,925	25	19	15	79.6
550	L 140 W 50 H 120	RIKEN JAPAN	1942		⑤ 3,769	3,590	81.5	2,925	25	19	15	79.6
550	L 140 W 50 H 120	RIKEN JAPAN	1942		⑤ 3,769	3,590	81.5	2,925	25	19	15	79.6
550	L 140 W 50 H 120	RIKEN JAPAN	1942		⑤ 3,769	3,590	81.5	2,925	25	19	15	79.6
550	L 140 W 50 H 120	RIKEN JAPAN	1942		⑤ 3,769	3,590	81.5	2,925	25	19	15	79.6
1.350	L 220 W 90 H 90	HIROSE JAPAN	1942		⑤ 8,284	7,890	81.5	6,430	25	19	15	79.6
1.350	L 220 W 90	HIROSE JAPAN	1942		⑤ 8,284	7,890	81.5	6,430	25	19	15	79.6

SHEET 2 OF 68 SHEETS

DATE 11 JULY 1948

										NON-REMOVABLE	
14	15	16	17	18	19	20	21	22	23		
Salvage Value	Depreciation Factor	Depreciated Value	Other Deductions	Reasons For Other Deductions	Deduction Yen	Total Extra Deduction Yen	Total Depreciated Value	Non-Removable Equipment	Non-Removable Value		
		28,523					27,129	849	566		
7	15	79.6	2,328	Chuck Missing	52	187	2,141	69	47		
				Head Stock Broken	20						
				11 Change Gears Missing	110						
				Handle Missing	5						
9	15	79.6	2,328	Chuck Missing	52	197	2,131	69	47		
				9 Change Gears Missing	90						
				Feed Change System Broken	50						
				Small parts Missing	5						
9	15	79.6	2,328	Chuck Missing	52	257	2,071	69	47		
				Feed Change System Broken	50						
				Tail Stock Broken	150						
				Small parts Missing	5						
9	15	79.6	2,328	Small parts Missing	5	5	2,323	69	47		
9	15	79.6	2,328	Chuck Missing	52	115	2,213	69	47		
				6 Change Gears Missing	48						
				2 Handles Missing	10						
				Small parts Missing	5						
9	15	79.6	2,328	Chuck Missing	58	184	2,144	69	47		
				7 Change Gears Missing	56						
				Feed Change System Missing	50						
				Tool post Missing	20						
19	15	79.6	5,118	Standy Rest Missing	40	75	5,043	153	102		
				Face plate Missing	20						
				Cooling pipe Set Missing	10						
				Small parts Missing	5						
19	15	79.6	5,718	Standy Rest Missing	40	80	5,038	153	102		
				Face plate Missing	20						
				Center Plate Missing	15						

14	1	57	Lathe Swing O.B. 280mm Swing O.C. 160mm Engine Distance B.C. 420mm Bed L. 1,100mm Feed C.S. Quick H. No. of S.S. 8 I.M.D. A.C. 1HP 60 220V 940 R.P.M.	550	L 140 W 50 H 120
15	1	58	Lathe Swing O.B. 280mm Swing O.C. 160mm Engine Distance B.C. 420mm Bed L. 1,100mm Feed C.S. Quick H. No. of S.S. 8 I.M.D. A.C. 1HP 60 220V 940 R.P.M.	550	L 140 W 50 H 120
16	1	59	Lathe Swing O.B. 280mm Swing O.C. 160mm Engine Distance B.C. 420mm Bed L. 1,100mm Feed C.S. Quick H. No. of S.S. 8 I.M.D. A.C. 1HP 60 220V 940 R.P.M.	550	L 140 W 50 H 120
17	1	75	Lathe Swing O.B. 420mm Swing O.C. 240mm Engine Distance B.C. 780mm Bed L. 1,900mm Feed C.S. Quick H. No. of S.S. 8 I.M.D. A.C. 3HP 60 220V 1720 R.P.M.	1,350	L 220 W 90 H 90
18	1	76	Lathe Swing O.B. 420mm Swing O.C. 240mm Engine Distance B.C. 780mm Bed L. 1,900mm Feed C.S. Quick H. No. of S.S. 8 I.M.D. A.C. 3HP 60 220V 1720 R.P.M.	1,350	L 220 W 90 H 90
19	1	77	Lathe Swing O.B. 420mm Swing O.C. 240mm Engine Distance B.C. 780mm Bed L. 1,900mm Feed C.S. Quick H. No. of S.S. 8 I.M.D. A.C. 3HP 60 220V 1720 R.P.M.	1,350	L 220 W 90 H 90
20	1	78	Lathe Swing O.B. 420mm Swing O.C. 240mm Engine Distance B.C. 780mm Bed L. 1,900mm Feed C.S. Quick H. No. of S.S. 8 I.M.D. A.C. 3HP 60 220V 1720 R.P.M.	1,350	L 200 W 90 H 90

NOTES : NO Dittos Allowed in Spaces
Crossline All Spaces Not Used (As Shown Above)

Page-Total
Cumulative-Total

8,700
16,350

550	L 140 W 50 H 120	RIKEN JAPAN 1942	(E) 3,769	3,590	815	2,925	25	19	15	79.6	2
550	L 140 W 50 H 120	RIKEN JAPAN 1942	(E) 3,769	3,590	815	2,925	25	19	15	79.6	2
550	L 140 W 50 H 120	RIKEN JAPAN 1942	(E) 3,769	3,590	815	2,925	25	19	15	79.6	2
1,350	L 220 W 90 H 90	HIROSE JAPAN 1942	(E) 8,284	7,890	815	6,430	25	19	15	79.6	5
1,350	L 220 W 90 H 90	HIROSE JAPAN 1942	(E) 8,284	7,890	815	6,430	25	19	15	79.6	5
1,350	L 220 W 90 H 90	HIROSE JAPAN 1942	(E) 8,284	7,890	815	6,430	25	19	15	79.6	5
1,350	L 200 W 90 H 90	HIROSE JAPAN 1942	(E) 8,284	7,890	815	6,430	25	19	15	79.6	5
8,700			55,750	53,700		43,270					
16,350			101,757	96,920		81,929					

9	15	796	2,328	Small parts	Missing	5	5	2,323	69	47
9	15	796	2,328	Chuck	Missing	52				
				6 Change Gears	Missing	48	115	2,213	69	47
				2 Handles	Missing	10				
				Small parts	Missing	5				
9	15	796	2,328	Chuck	Missing	58				
				7 Change Gears	Missing	56	184	2,144	69	47
				Feed Change System	Missing	50				
				Tool post	Missing	20				
9	15	796	5,118	Steady Rest	Missing	40				
				Face plate	Missing	20	75	5,043	153	102
				Cooling Pipe Set	Missing	10				
				Small parts	Missing	5				
9	15	796	5,118	Steady Rest	Missing	40				
				Face plate	Missing	20	80	5,038	153	102
				Center Plate	Missing	15				
				Small parts	Missing	5				
9	15	796	5,118	Chuck	Missing	76				
				Steady Rest	Missing	50	141	4,977	153	102
				Cooling Set	Missing	10				
				Small parts	Missing	5				
9	15	796	5,118	Steady Rest	Missing	50				
				Face plate	Missing	20	85	5,033	153	102
				Cooling Pipe	Missing	10				
				Small parts	Missing	5				
			34,490					33,114	1,026	670
			62,963					60,243	1,879	1,256

A CODE NUMBER 32 - 31 (A)
 B NAME OF PLANT AMANOKAWA PLANT HIRAKATA ARSENAL
 C LOCATION NO.29, OKA, HIRAKATA-SHI, OSAKA PREFECTURE
 D INDUSTRIAL GROUP MILITARY ARSENAL
 E SECTION OF EVALUATION INTEGRATED FACILITY
 F TYPE OF FACILITY MACHINE SHOP

1	2	3	4	5	6
Item No.	Bldg. No.	Inventory No.	Name-Type Specifications Accessories & Spare parts	Weight (Kg)	Packing Size Length Width Height (cm)
			BROUGHT FORWARD	16,350	
21	1	79	Lathe Swing over Bed 420mm Swing Over Carriage 240mm Engine Distance Between Centers 180mm Bed Length 1900mm Feed Change System Quick Hand No. of Spindle Speeds 8, I.M.D.A.C. 3HP 60 ~ 220V. 1720 R.P.M.	11350	L 220 W 90 H 90
22	1	80	Lathe Swing O.B. 430mm Swing O.C. 280mm. Engine Distance B.C. 760mm Bed L. 1950mm. Feed C.S. Quick H. No. of S.S. 12 I.M.D.A.C. 5HP 60 ~ 220V. 1720 R.P.M.	11300	L 215 W 100 H 130
23	1	81	Lathe Swing O.B. 430mm Swing O.C. 280mm. Engine Distance B.C. 760mm Bed L. 1950mm. Feed C.S. Quick H. No. of S.S. 12 I.M.D.A.C. 5HP 60 ~ 220V. 1720 R.P.M.	11300	L 215 W 100 H 130
24	1	82	Lathe Swing O.B. 280mm Swing O.C. 120mm. Screw Distance B.C. 280mm Bed L. 950mm. No. of S.S. 4 I.M.D.A.C. 1/2 HP 60 ~ 220V 1120 R.P.M.	620	L 135 W 85 H 260
25	1	83	Lathe Swing O.B. 280mm Swing O.C. 120mm. Screw Distance B.C. 280mm Bed L. 950mm. No. of S.S. 4 I.M.D.A.C. 1/2 HP 60 ~ 220V. 1120 R.P.M.	620	L 135 W 85 H 260
26	1	84	Lathe Swing O.B. 280mm Swing O.C. 120mm. Screw Distance B.C. 280mm Bed L. 950mm. No. of S.S. 4 I.M.D.A.C. 1/2 HP 60 ~ 220V. 1120 R.P.M.	620	L 135 W 85 H 260
27	1	85	Lathe Swing O.B. 280mm Swing O.C. 120mm Screw Distance B.C. 230mm Bed L. 850mm C.S.D. 3 Steps	250	L 135 W 85 H 260
28	1	86	Lathe Swing O.B. 300mm Swing O.C. 160mm Relieving Distance B.C. 300mm Bed L. 1000mm. C.S.D. 3 Steps Motor A.C. 1/4 HP 60 ~ 220V. 1725 R.P.M.	650	L 130 W 60 H 110
29	1	87	Lathe Swing O.B. 300mm Swing O.C. 160mm Relieving Distance B.C. 300mm Bed L. 1000mm. C.S.D. 3 Steps Motor A.C. 1/4 HP 60 ~ 220V. 1725 R.P.M.	650	L 130 W 60 H 110

ARSENAL
REFECTURE

PLANT EVALUATION

LITY

R E M O V A B L E

5	6	7	8	9	9A	10	11	12	13	14	15	
Weight (Kg)	Packing Size Length Width Height (cm)	Maker and Country	Year-Made-or Installed	DONT USE	Original Cost	Purchase Price of Removable Equipment	Conversion Factor	Purchase Price 1939 Yen	Life Expectancy	Future Life	Salvage Value	Depreciation Factor
16,350					151,757	86,920		86,929				
1,350	L 220 W 90 H 90	HIROSE JAPAN	1942		8,284	7,890	815	6,430	25	19	15	796
1,300	L 215 W 100 H 130	OSAKAKIKO JAPAN	1939		6,982	6,650	100.0	6,650	25	16	15	69.4
1,300	L 215 W 100 H 130	OSAKAKIKO JAPAN	1939		6,982	6,650	100.0	6,650	25	16	15	69.4
620	L 135 W 85 H 260	TOYOSEIKI JAPAN	1941		12,321	11,735	88.8	10,420	25	18	15	76.2
620	L 135 W 85 H 260	TOYOSEIKI JAPAN	1941		12,321	11,735	88.8	10,420	25	18	15	76.2
620	L 135 W 85 H 260	TOYOSEIKI JAPAN	1941		12,321	11,735	88.8	10,420	25	18	15	76.2
250	L 135 W 85 H 260	FUJII JAPAN	1941		7,859	7,485	88.8	6,646	25	18	15	76.2
650	L 130 W 60 H 110	TOYOSEIKI JAPAN	1941		16,800	16,000	88.8	14,208	25	18	15	76.2
650	L 130 W 60 H 110	TOYOSEIKI JAPAN	1941		16,800	16,000	88.8	14,208	25	18	15	76.2

SHEET 3 OF 48 SHEETS

DATE 11 JULY 1948

3	14	15	16	17	18	19	20	21	NON-REMOVABLE	
									22	23
Life	Salvage Value	Depreciation Factor	Depreciated Value	Other Deductions	Reason-For Other Deductions	Deduction Yen	Total Extra Deduction Yen	Total Depreciated Value	Non-Removable Equipment	Non-Removable Value
			62,963					60,243	1,875	1256
9	15	79.6	5,118	Steady Rest	Missing	50	85	5,033	153	102
				Face plate	Missing	20				
				Center Plate	Missing	10				
				Small parts	Missing	5				
				Motor	Missing	200				
16	15	69.4	4,615	16 change gears	Missing	120	345	4,270	138	92
				Face Plate	Missing	20				
				Small parts	Missing	5				
				Face Plate	Missing	20				
16	15	69.4	4,615	Small Parts	Missing	5	25	4,590	138	92
				Stud for change gear	Missing	2	7	7,933	238	158
18	15	76.2	7,940	Small parts	Missing	5				
				Switch Cover	Missing	2				
18	15	76.2	7,940	Small Parts	Missing	5	7	7,933	238	158
								7,940	238	158
				Countershaft	Missing	200				
18	15	76.2	5,064	Small parts	Missing	5	205	4,859	150	102
3	18	15	76.2	Small parts of attachment	Missing	30	30	10,796	324	217
5	18	15	76.2	Motor (shroud grinder)	Missing	40	40	10,786	324	217

24	1	82	Lathe Swing O.B. 280 mm. Swing O.C. 120 mm. Screw Distance B.C. 280 mm. Bed L. 950 mm. No. of S.S. 4 I.M.D. A.C. 1/2 H.P. 60 ~ 220V. 1120 R.P.M.	620	L 135 W 85 H 260
25	1	83	Lathe Swing O.B. 280 mm. Swing O.C. 120 mm. Screw Distance B.C. 280 mm. Bed L. 950 mm. No. of S.S. 4 I.M.D. A.C. 1/2 H.P. 60 ~ 220V. 1120 R.P.M.	620	L 135 W 85 H 260
26	1	84	Lathe Swing O.B. 280 mm. Swing O.C. 120 mm. Screw Distance B.C. 280 mm. Bed L. 950 mm. No. of S.S. 4 I.M.D. A.C. 1/2 H.P. 60 ~ 220V. 1120 R.P.M.	620	L 135 W 85 H 260
27	1	85	Lathe Swing O.B. 280 mm. Swing O.C. 120 mm. Screw Distance B.C. 230 mm. Bed L. 850 mm. C.S.D. 3 Steps	250	L 135 W 85 H 260
28	1	86	Lathe Swing O.B. 300 mm. Swing O.C. 160 mm. Relieving Distance B.C. 300 mm. Bed L. 1000 mm. C.S.D. 3 Steps Motor A.C. 1/4 H.P. 60 ~ 220V. 1725 R.P.M.	650	L 130 W 60 H 110
29	1	87	Lathe Swing O.B. 300 mm. Swing O.C. 160 mm. Relieving Distance B.C. 300 mm. Bed L. 1000 mm. C.S.D. 3 Steps Motor A.C. 1/4 H.P. 60 ~ 220V. 1725 R.P.M.	650	L 130 W 60 H 110
30	1	88	Lathe Swing O.B. 210 mm. Swing O.C. 110 mm. Bench Distance B.C. 560 mm. Bed L. 1020 mm. Feed C.S. Gear C.S.D. 3 Steps No. of S.S. 6	120	L 140 W 40 H 40

NOTES : NO Dittos Allowed in Spaces
Crossline All Spaces Not Used (As Shown Above)

Page-Total
Cumulative-Total

7480

23,830

620	L 135 W 85 H 260	TOYOSEIKI JAPAN 1941	ⓔ 12,321	11,735	88.8	10,420	25	18	15	76.2	7.9
620	L 135 W 85 H 260	TOYOSEIKI JAPAN 1941	ⓔ 12,321	11,735	88.8	10,420	25	18	15	76.2	7.9
620	L 135 W 85 H 260	TOYOSEIKI JAPAN 1941	ⓔ 12,321	11,735	88.8	10,420	25	18	15	76.2	7.9
250	L 135 W 85 H 260	FUJII JAPAN 1941	ⓔ 7,859	7,485	88.8	6,646	25	18	15	76.2	5.0
650	L 130 W 60 H 110	TOYOSEIKI JAPAN 1941	ⓔ 16,800	16,000	88.8	14,208	25	18	15	76.2	10
650	L 130 W 60 H 110	TOYOSEIKI JAPAN 1941	ⓔ 16,800	16,000	88.8	14,208	25	18	15	76.2	10
120	L 140 W 40 H 40	SANSEI JAPAN 1941	ⓔ 2,730	2,600	88.8	2,308	25	18	15	76.2	1
7,480			103,400	98,480		88,360					
23,830			205,157	195,400		170,289					1.2

15	76.2	7,940	Stud for change gear	Missing	2	7	7,933	238	158
			Small parts	Missing	5				
15	76.2	7,940	Switch Cover	Missing	2	7	7,933	238	158
			Small Parts	Missing	5				
15	76.2	7,940					7,940	238	158
15	76.2	5,064	Countershaft	Missing	200	205	4,859	150	102
			Small parts	Missing	5				
15	76.2	10,826	Small parts of attachment	Missing	30	30	10,796	324	217
15	76.2	10,826	Motor (thread grinder)	Missing	40	40	10,786	324	217
15	76.2	1,758	Chuck	Missing	40	85	1,673	52	35
			Collot attachment	Missing	10				
			Feed system	Broken	30				
			Small parts	Missing	5				
		66,642					65,813	1,993	1,331
		129,605					126,056	3,868	2,587

A CODE NUMBER 32-31(A)
 B NAME OF PLANT AMANOKAWA PLANT HIRAKATA ARSENAL
 C LOCATION NO 29, OKA, HIRAKATA-SHI, OSAKA PREFECTURE
 D INDUSTRIAL GROUP MILITARY ARSENAL
 E SECTION OF EVALUATION INTEGRATED FACILITY
 F TYPE OF FACILITY MACHINE SHOP

1	2	3	4	5	6
Item No.	Bldg. No.	Inventory No.	Name-Type-Specifications Accessories & Spare parts	Weight (Kg)	Packing Size Length Width Height (cm)
BROUGHT FORWARD				23.830	
31	1	89	Lathe Swing Over Bed 210mm Swing Over Carriage 110mm. Bench Distance Between Centers 60mm Bed Length 1020mm. Feed Change System. Gear	120	L 110 W 40 H 40
			C.S.D 3Steps No. of Spindle Speeds 6		
32	1	90	Lathe Swing O.B. 210mm Swing O.C. 110mm. Bench Distance B.C. 560mm Bed L. 1020mm. Feed C.S. Gear	120	L 110 W 40 H 40
			C.S.D 3Steps No. of S.S. 6		
33	1	91	Lathe Swing O.B. 210mm Swing O.C. 110mm. Bench Distance B.C. 560mm Bed L. 1020mm. Feed C.S. Gear	120	L 110 W 40 H 40
			C.S.D 3Steps No. of S.S. 6		
34	1	92	Lathe Swing O.B. 210mm Swing O.C. 110mm. Bench Distance B.C. 560mm Bed L. 1020mm. Feed C.S. Gear	120	L 110 W 40 H 40
			C.S.D 3Steps No. of S.S. 6		
35	1	93	Lathe Swing O.B. 210mm Swing O.C. 110mm. Bench Distance B.C. 560mm Bed L. 1020mm. Feed C.S. Gear	120	L 110 W 40 H 40
			C.S.D 3Steps No. of S.S. 6		
36	1	94	Lathe Swing O.B. 210mm Swing O.C. 110mm. Bench Distance B.C. 560mm Bed L. 1020mm. Feed C.S. Gear	120	L 110 W 40 H 40
			C.S.D 3Steps No. of S.S. 6		
37	1	95	Lathe Swing O.B. 210mm Swing O.C. 110mm. Bench Distance B.C. 560mm Bed L. 1020mm. Feed C.S. Gear	120	L 110 W 40 H 40
			C.S.D 3Steps No. of S.S. 6		
38	1	96	Lathe Swing O.B. 210mm Swing O.C. 110mm. Bench Distance B.C. 560mm Bed L. 1020mm. Feed C.S. Gear	120	L 110 W 40 H 40

SHEET 4 OF 68 SHEETS

DATE 11 JULY 1948

Life	NON-REMOVABLE										
	14	15	16	17	18	19	20	21	22	23	
	Salvage Value	Depreciation Factor	Depreciated Value	Other Deductions	Reason-For Other Deductions	Deduction Yen	Total Extra Deduction Yen	Total Depreciated Value	Non-Removable Equipment	Non-Removable Value	
			129,605					126,056	7,868	2,587	
8	15	76.2	1,758	Chuck	Missing	40		6,678	52	35	
				Collet Attachment	Missing	10	80				
				2 Covers	Missing	10					
				Feed System	Damaged	20					
				Chuck	Missing	40					
8	15	76.2	6,758	Collet	Missing	10	80	1,678	52	35	
				Back Gear System	Missing	20					
				Small Parts	Missing	10					
				Chuck	Missing	40					
18	15	76.2	1,758	Collet	Missing	10	80	1,678	52	35	
				Feed System	Damaged	20					
				Small Parts	Missing	10					
				Chuck	Missing	40					
18	15	76.2	1,758	Collet	Missing	10	80	1,678	52	35	
				Feed System	Damaged	20					
				Half Nut System	Damaged	10					
				Chuck	Missing	40					
18	15	76.2	1,758	Collet	Missing	10	80	1,678	52	35	
				Feed System	Damaged	20					
				Small Parts	Missing	10					
				Chuck	Missing	40					
18	15	76.2	1,758	Collet Attachment	Missing	10	80	1,678	52	35	
				Back Gear	Missing	20					
				Small Parts	Missing	10					
				Chuck	Missing	40					
18	15	76.2	1,758	Collet	Missing	10	85	1,693	52	35	
				Handle	Missing	5					
				Small Parts	Missing	10					
				Chuck	Missing	40					
18	15	76.2	1,758	Collet	Missing	10	110	6,488	52	35	
				Tail Stock	Damaged	50					
				Small Parts	Missing	10					

34	1	92	Lathe	Swing O.B. 210 m.m. Swing O.C. 110 m.m.		L	110
			Bench	Distance B.C. 560 m.m. Bed L. 1020 m.m.	120	W	40
				Feed C.S. Gear		H	40
			C.S.D	3Steps No. of S.S. 6			
35	1	93	Lathe	Swing O.B. 210 m.m. Swing O.C. 110 m.m.		L	110
			Bench	Distance B.C. 560 m.m. Bed L. 1020 m.m.	120	W	40
				Feed C.S. Gear		H	40
			C.S.D	3Steps No. of S.S. 6			
36	1	94	Lathe	Swing O.B. 210 m.m. Swing O.C. 110 m.m.		L	110
			Bench	Distance B.C. 560 m.m. Bed L. 1020 m.m.	120	W	40
				Feed C.S. Gear		H	40
			C.S.D	3Steps No. of S.S. 6			
37	1	95	Lathe	Swing O.B. 210 m.m. Swing O.C. 110 m.m.		L	110
			Bench	Distance B.C. 560 m.m. Bed L. 1020 m.m.	120	W	40
				Feed C.S. Gear		H	40
			C.S.D	3Steps No. of S.S. 6			
38	1	96	Lathe	Swing O.B. 210 m.m. Swing O.C. 110 m.m.		L	110
			Bench	Distance B.C. 560 m.m. Bed L. 1020 m.m.	120	W	40
				Feed C.S. Gear		H	40
			C.S.D	3Steps No. of S.S. 6			
39	1	97	Lathe	Swing O.B. 210 m.m. Swing O.C. 110 m.m.		L	110
			Bench	Distance B.C. 560 m.m. Bed L. 1020 m.m.	120	W	40
				Feed C.S. Gear		H	40
			C.S.D	3Steps No. of S.S. 6			
40	1	98	Lathe	Swing O.B. 210 m.m. Swing O.C. 110 m.m.		L	110
			Bench	Distance B.C. 560 m.m. Bed L. 1020 m.m.	120	W	40
				Feed C.S. Gear		H	40
			C.S.D	3Steps No. of S.S. 6			

NOTES : NO Dittos Allowed in Spaces

Crossline All Spaces Not Used (As Shown Above)

Page-Total

Cumulative-Total

1,200

25,030

120	L	110	SANSHO	(E)	2,730	2,600	88.8	2,308	25	18	15	76.2
	W	40	JAPAN 1941									
	H	40										
120	L	110	SANSHO	(E)	2,730	2,600	88.8	2,308	25	18	15	76.2
	W	40	JAPAN 1941									
	H	40										
120	L	110	SANSHO	(E)	2,730	2,600	88.8	2,308	25	18	15	76.2
	W	40	JAPAN 1941									
	H	40										
120	L	110	SANSHO	(E)	2,730	2,600	88.8	2,308	25	18	15	76.2
	W	40	JAPAN 1941									
	H	40										
120	L	110	SANSHO	(E)	2,730	2,600	88.8	2,308	25	18	15	76.2
	W	40	JAPAN 1941									
	H	40										
120	L	110	SANSHO	(E)	2,730	2,600	88.8	2,308	25	18	15	76.2
	W	40	JAPAN 1941									
	H	40										
1,200					27,300	26,000		23,080				
25.030					232,457	221,400		192,369				

18	15	76.2	1,758	Chuck	Missing	40				
				Collet	Missing	10	80	1,678	52	35
				Feed System	Damaged	20				
				Half Nut System	Damaged	10				
				Chuck	Missing	40				
18	15	76.2	1,758	Collet	Missing	10	80	1,678	52	35
				Feed System	Damaged	20				
				Small Parts	Missing	10				
				Chuck	Missing	40				
18	15	76.2	1,758	Collet Attachment	Missing	10	80	1,678	52	35
				Back Gear	Missing	20				
				Small Parts	Missing	10				
				Chuck	Missing	40				
18	15	76.2	1,758	Collet	Missing	10	85	1,693	52	35
				Handle	Missing	5				
				Small Parts	Missing	10				
				Chuck	Missing	40				
18	15	76.2	1,758	Collet	Missing	10	110	1,648	52	35
				Tail Stock	Damaged	50				
				Small Parts	Missing	10				
				Chuck	Missing	40				
18	15	76.2	1,758	Collet	Missing	10	65	1,693	52	35
				Handle	Missing	5				
				Small Parts	Missing	10				
				Cover	Damaged	5				
18	15	76.2	1,758	Small Parts	Missing	10	15	1,743	52	35
			17,580					16,845	520	350
			147,185					142,901	4,388	2,937

A CODE NUMBER 32-31(A)
 B NAME OF PLANT AMANOKAWA PLANT HIRAKATA ARSENAL
 C LOCATION NO.29, OKA, HIRAKATA-SHI, OSAKA PREFECTURE
 D INDUSTRIAL GROUP MILITARY ARSENAL
 E SECTION OF EVALUATION INTEGRATED FACILITY
 F TYPE OF FACILITY MACHINE SHOP

1	2	3	4	5	6
Item No.	Bldg. No.	Inventory No.	Name-Type-Specifications Accessories & Spare parts	Weight (Kg)	Packing Size Length Width Height (cm)
BROUGHT FORWARD				25,030	
41	1	99	Lathe Swing Over Bed 210mm Swing Over Carriage 110mm Bench Distance Between Centers 560mm Bed Length 1020mm Feed Change System Gear C.S.D. 3 Steps No. of Spindle Speeds 6	120	L 110 W 40 H 40
42	1	100	Lathe Swing O.B. 210mm Swing O.C. 110mm Bench Distance B.C. 560mm Bed L. 1020mm Feed C.S. Gear C.S.D. 3 Steps No. of S.S. 6	120	L 110 W 40 H 40
43	1	101	Lathe Swing O.B. 300mm Swing O.C. 150mm Engine Distance B.C. 700mm Bed L. 1600mm Feed C.S. Cone Pulley C.S.D. 4 Steps No. of S.S. 8	850	L 210 W 80 H 110
44	1	102	Lathe Swing O.B. 300mm Swing O.C. 200mm Engine Distance B.C. 850mm Bed L. 1840mm Feed C.S. Cone Pulley C.S.D. 4 Steps No. of S.S. 8	980	L 210 W 85 H 110
45	1	103	Lathe Swing O.B. 300mm Swing O.C. 180mm Engine Distance B.C. 900mm Bed L. 1910mm Feed C.S. Cone Pulley C.S.D. 4 Steps No. of S.S. 8	1,000	L 210 W 80 H 110
46	1	104	Lathe Swing O.B. 300mm Swing O.C. 180mm Engine Distance B.C. 900mm Bed L. 1910mm Feed C.S. Cone Pulley C.S.D. 4 Steps No. of S.S. 8	1,000	L 210 W 80 H 110
47	1	105	Lathe Swing O.B. 360mm Swing O.C. 220mm Engine Distance B.C. 800mm Bed L. 1920mm Feed C.S. Cone Pulley C.S.D. 4 Steps No. of S.S. 8	1,000	L 200 W 90 H 120
48	1	106	Lathe Swing O.B. 420mm Swing O.C. 250mm Engine Distance B.C. 800mm Bed L. 1840mm Feed C.S. Gear	980	L 200 W 90 H 120

TA ARSENAL
 REFECTURE
 LITY

PLANT EVALUATION

R E M O V A B L E

5	6	7	8	9	9A	10	11	12	13	14	15	D	
Weight (Kg)	Packing Size Length Width Height (cm)	Maker and Country	Year-Made-or-Installed	DON'T USE	Original Cost	Purchase Price of Removable Equipment	Conversion Factor	Purchase Price 1989 Yen	Life Expectancy	Future Life	Salvage Value	Depreciation Factor	
25,030	L 110 W 40 H 40	SANSHO JAPAN	1941		232,457	221,400 221,400		193,369					1
120	L 110 W 40 H 40	SANSHO JAPAN	1941		2,730	2,600	888	2,308	25	18	15	76.2	
120	L 110 W 40 H 40	SANSHO JAPAN	1941		2,730	2,600	888	2,308	25	18	15	76.2	
850	L 210 W 80 H 110	NILES BEMENT U.S.A.	1907		729	693	370.6	2,568	25	0	15	15.0	
980	L 210 W 85 H 110	FE. REED U.S.A.	1906		1,381	1,316	401.4	5,282	25	0	15	15.0	
1,000	L 210 W 80 H 110	NILES BEMENT U.S.A.	1907		711	678	370.6	2,512	25	0	15	15.0	
1,000	L 210 W 80 H 110	NILES BEMENT U.S.A.	1907		714	678	370.6	2,512	25	0	15	15.0	
1,000	L 200 W 90 H 120	NILES BEMENT U.S.A.	1907		869	828	370.6	3,068	25	0	15	15.0	
980	L 200 W 90 H 120	NILES BEMENT	1906		1,142	6,088	401.4	4,367	25	0	15	15.0	

SHEET 5 OF 68 SHEETS

DATE 11 JULY 1948

14	15	16	17	18	19	20	21	NON-REMOVABLE	
								22	23
Salvage Value	Depreciation Factor	Depreciated Value	Other Deductions	Reason For Other Deductions	Deduction Yen	Total Extra Deduction Yen	Total Depreciated Value	Non-Removable Equipment	Non-Removable Value
		147,185					142,901	4,388	2,917
8	15	76.2	1,758	Feed System Broken Handle Missing Small Parts Missing	30 5 10	45	1,713	52	35
8	15	76.2	1,758	Feed System Missing Small Parts Missing	50 10	60	1,678	52	35
0	15	15.0	385	chuck Missing Handle Missing Small Parts Missing	(40) (5) (10)	(55)	385	11	7
0	15	15.0	792	Small Parts Missing	(10)	(10)	792	24	15
0	15	15.0	376	Cone Pulley of Counter Shaft Missing Small Parts Missing	(40) (10)	(50)	376	11	7
0	15	15.0	376	Counter Shaft Missing Small Parts Missing	(100) (10)	(110)	376	11	7
0	15	15.0	460	Handle Missing Small Parts Missing	(0) (10)	(20)	460	13	9
0	15	15.0	655	Small Parts Missing	(0)	(0)	655	19	13

44	1	102	Lathe Swing O.B. 300mm Swing O.C. 200mm Engine Distance B.C. 850mm Bed L. 1840mm Feed C.S. Cone Pulley C.S.D. 4 Steps No. of S.S. 8	980	L 210 W 85 H 110	FE L
45	1	103	Lathe Swing O.B. 300mm Swing O.C. 180mm Engine Distance B.C. 900mm Bed L. 1910mm Feed C.S. Cone Pulley C.S.D. 4 Steps No. of S.S. 8	1.000	L 210 W 80 H 110	NI B L
46	1	104	Lathe Swing O.B. 300mm Swing O.C. 180mm Engine Distance B.C. 900mm Bed L. 1910mm Feed C.S. Cone Pulley C.S.D. 4 Steps No. of S.S. 8	1.000	L 210 W 80 H 110	NI B L
47	1	105	Lathe Swing O.B. 360mm Swing O.C. 220mm Engine Distance B.C. 800mm Bed L. 1920mm Feed C.S. Cone Pulley C.S.D. 4 Steps No. of S.S. 8	1.000	L 200 W 90 H 120	NI B L
48	1	106	Lathe Swing O.B. 420mm Swing O.C. 250mm Engine Distance B.C. 800mm Bed L. 1840mm Feed C.S. Gear C.S.D. 4 Steps No. of S.S. 8	980	L 200 W 90 H 120	NI B L
49	1	109	Lathe Swing O.B. 400mm Swing O.C. 250mm Engine Distance B.C. 1300mm Bed L. 2260mm Feed C.S. Cone Pulley C.S.D. 3 Steps No. of S.S. 6	1.450	L 280 W 90 H 120	NI B L
50	1	110	Lathe Swing O.B. 410mm Swing O.C. 250mm Engine Distance B.C. 900mm Bed L. 1970mm Feed C.S. Cone Pulley C.S.D. 5 Steps No. of S.S. 10	1.100	L 210 W 85 H 110	F
NOTES : NO Dittos Allowed in Spaces				Page-Total	8,600	
Crossline All Spaces Not Used (As Shown Above)				Cumulative-Total	8,600 33,630	

0	15	15.0	792	Small Parts Missing	(10)	(10)	792	24	15
0	15	15.0	376	Cone Pulley of Counter Shaft Missing Small Parts Missing	(40) (10)	(50)	376	11	7
0	15	15.0	376	Counter Shaft Missing Small Parts Missing	(100) (40)	(110)	376	11	7
0	15	15.0	460	Handle Missing Small Parts Missing	(40) (10)	(20)	460	13	9
0	15	15.0	655	Small Parts Missing	(40)	(10)	655	19	13
0	15	15.0	565	Chuck Missing Handle Missing Small Parts Missing	(40) (10) (10)	(60)	565	16	11
0	15	15.0	460	Chuck Missing Small Parts Missing	(40) (10)	(50)	460	13	9
			7585				7480	222	148
			154,770				150,381	4,610	3,085

A CODE NUMBER 32 - 31 (A)
 B NAME OF PLANT AMANOKAWA PLANT HIRAKATA ARSENAL
 C LOCATION NO.29, OKA, HIRAKATA-SHI, OSAKA PREFECTURE
 D INDUSTRIAL GROUP MILITARY ARSENAL
 E SECTION OF EVALUATION INTEGRATED FACILITY
 F TYPE OF FACILITY MACHINE SHOP

1	2	3	4	5	6
Item No.	Bldg. No.	Inventory No.	Name-Type-Specifications Accessories & Spare parts	Weight (Kg)	Packing Size Length Width Height (cm)
BROUGHT FORWARD				33,830	
51	1	111	Lathe Swing Over Bed 410mm Swing Over Casing 250mm Engine Distance Between Centers 900mm Bed Length 1970mm Feed Change System Cone Pulley C.S.D. 5 Steps No. of Spindle Speeds 10	1,100	L 210 W 85 H 110
52	1	112	Lathe Swing O.B. 410mm Swing O.C. 250mm Engine Distance B.C. 900mm Bed L. 1970mm Feed C.S. Cone Pulley C.S.D. 5 Steps No. of S.S. 10	1,100	L 220 W 90 H 110
53	1	113	Lathe Swing O.B. 410mm Swing O.C. 250mm Engine Distance B.C. 900mm Bed L. 1970mm Feed C.S. Cone Pulley C.S.D. 5 Steps No. of S.S. 10	1,100	L 210 W 85 H 110
54	1	114	Lathe Swing O.B. 410mm Swing O.C. 250mm Engine Distance B.C. 900mm Bed L. 1970mm Feed C.S. Cone Pulley C.S.D. 5 Steps No. of S.S. 10	1,100	L 210 W 85 H 110
55	-1	115	Lathe Swing O.B. 410mm Swing O.C. 250mm Engine Distance B.C. 900mm Bed L. 1970mm Feed C.S. Cone Pulley C.S.D. 5 Steps No. of S.S. 10	1,100	L 210 W 85 H 110
56	1	116	Lathe Swing O.B. 410mm Swing O.C. 250mm Engine Distance B.C. 900mm Bed L. 1970mm Feed C.S. Cone Pulley C.S.D. 5 Steps No. of S.S. 10	1,100	L 210 W 85 H 110
57	1	117	Lathe Swing O.B. 210mm Swing O.C. 110mm Bench Distance B.C. 560mm Bed L. 1020mm Feed C.S. Gear C.S.D. 3 Steps No. of S.S. 6	120	L 110 W 40 H 40
58	1	118	Lathe Swing O.B. 210mm Swing O.C. 110mm Bench Distance B.C. 560mm Bed L. 1020mm Feed C.S. Gear	120	L 110 W 40 H 40

SHEET 6 OF 68 SHEETS

DATE 11 JULY 1948

3	14	15	16	17	18	19	20	21	NON-REMOVABLE	
									22	23
Life	Salvage Value	Depreciation Factor	Depreciated Value	Other Deductions	Reason-For Other Deductions	Deduction Yen	Total Extra Deduction Yen	Total Depreciated Value	Non-Removable Equipment	Non-Removable Value
			154,770					150,381	4,619	3,085
0	15	15.0	460	Chuck	Missing	(40)	(60)	460	14	8
				Half Nut	Damaged	(10)				
				Small Parts	Missing	(10)				
0	15	15.0	460	Chuck	Missing	(40)	(45)	460	14	8
				Back Gear Cover	Missing	(5)				
0	15	15.0	460	Chuck	Missing	(40)	(50)	460	14	8
				Small Parts	Missing	(10)				
0	15	15.0	460	Chuck	Missing	(40)	(50)	460	14	8
				Small Parts	Missing	(10)				
0	15	15.0	460	Chuck	Missing	(40)	(50)	460	14	8
				Small Parts	Missing	(10)				
0	15	15.0	460	Chuck	Missing	(40)	(50)	460	14	8
				Small Parts	Missing	(10)				
0	15	15.0	460	Chuck	Missing	(40)	(50)	460	14	8
				Tool Post Handle	Missing	(10)				
0	15	15.0	1,394	Feed System	Damaged	25	32	1,362	41	28
				Center	Missing	2				
				Small Parts	Missing	5				
15	15	59.2	1,394	Feed System	Damaged	40	70	1,324	41	28
				Collar	Missing	10				

54	1	114	Lathe Swing O.B. 410mm. Swing O.C. 250mm. Engine Distance B.C. 900mm. Bed L. 1970mm. Feed C.S. Cone Pulley C.S.D. 5 Steps No. of S.S. 10	1,100	L 210 W 85 H 110
55	-1	115	Lathe Swing O.B. 410mm. Swing O.C. 250mm. Engine Distance B.C. 900mm. Bed L. 1970mm. Feed C.S. Cone Pulley C.S.D. 5 Steps No. of S.S. 10	1,100	L 210 W 85 H 110
56	1	116	Lathe Swing O.B. 410mm. Swing O.C. 250mm. Engine Distance B.C. 900mm. Bed L. 1970mm. Feed C.S. Cone Pulley C.S.D. 5 Steps No. of S.S. 10	1,100	L 210 W 85 H 110
57	1	117	Lathe Swing O.B. 270mm. Swing O.C. 110mm. Bench Distance B.C. 560mm. Bed L. 1020mm. Feed C.S. Gear C.S.D. 3 Steps No. of S.S. 6	120	L 110 W 40 H 40
58	1	118	Lathe Swing O.B. 210mm. Swing O.C. 110mm. Bench Distance B.C. 560mm. Bed L. 1020mm. Feed C.S. Gear C.S.D. 3 Steps No. of S.S. 6	120	L 110 W 40 H 40
59	1	119	Lathe Swing O.B. 240mm. Swing O.C. 150mm. Bench Distance B.C. 300mm. Bed L. 750mm. C.S.D. 2 Steps No. of S.S. 2	250	L 90 W 40 H 70
60	1	120	Lathe Swing O.B. 240mm. Swing O.C. 150mm. Bench Distance B.C. 300mm. Bed L. 750mm. C.S.D. 2 Steps No. of S.S. 2	250	L 90 W 40 H 70

NOTES: NO Digits Allowed in Spaces
Crossing All Spaces Not Used (As Shown Above)

Page Total 7,340
Cumulative Total 40,970
~~54,740~~

100	L	210	F.E. REED	(E)	869	828	370.6	3,068	25	0	15	15.0
	W	85	U.S.A. 1907									
	H	110										
100	L	210	F.E. REED	(E)	869	828	370.6	3,068	25	0	15	15.0
	W	85	U.S.A. 1907									
	H	110										
100	L	210	F.E. REED	(E)	869	828	370.6	3,068	25	0	15	15.0
	W	85	U.S.A. 1907									
	H	110										
120	L	110	SANSHO	(E)	1,680	1,600	1473	2,356	25	0	15	15.0
	W	40	JAPAN 1936									
	H	40										
120	L	110	SANSHO	(E)	1,680	1,600	1473	2,356	25	13	15	59.2
	W	40	JAPAN 1936									
	H	40										
250	L	90	WAKAYAMA	(E)	970	924	975	900	25	14	15	62.6
	W	40	JAPAN 1937									
	H	70										
250	L	90	WAKAYAMA	(E)	970	924	975	900	25	14	15	62.6
	W	40	JAPAN 1937									
	H	70										
7,340					10,514	10,016		24,920				
40,970						243,743						
4,940					255,914	238,743		250,050				

0	15	15.0	460	Chuck Small Parts	Missing Missing	(10) (10)	(50) (50)	460	14	8
0	15	15.0	460	Chuck Small Parts	Missing Missing	(40) (10)	(50) (50)	460	14	8
0	15	15.0	460	Chuck Tool Post Handle	Missing Missing	(40) (10)	(50) (50)	460	14	8
0	15	15.0	1,394	Feed System Center Small Parts	Damaged Missing Missing	25 2 5	32	1,362	41	28
13	15	59.2	1,394	Feed System Collar 2 Handles Small Parts V Bolt	Damaged Missing Missing Missing Missing	40 10 10 10 9	70	1,324	41	28
14	15	62.6	563	Handle Collar Small Parts V Belt	Missing Missing Missing Missing	5 10 10 9	34	529	16	11
14	15	62.6	563	Handle Collar Small Parts	Missing Missing Missing	5 10 10	34	529	16	11
			6,674					6,504	198	126
			18,444					156,885	4,808	3,211

A CODE NUMBER 32 - 31 (A)
 B NAME OF PLANT AMANOKAWA PLANT HIRAKATA ARSENAL
 C LOCATION NO 29, OKA, HIRAKATA-SHI, OSAKA PREFECTURE
 D INDUSTRIAL GROUP MILITARY ARSENAL
 E SECTION OF EVALUATION INTEGRATED FACILITY
 F TYPE OF FACILITY MACHINE SHOP

1	2	3	4	5	6
Item No.	Bldg. No.	Inventory No.	Name-Type-Specifications Accessories & Spare parts	Weight (Kg)	Packing Size Length Width Height (cm)
			BROUGHT FORWARD	40,970 40,970	
61	1	121	Lathe Swing Over Bed 240 mm Swing Over Carriage 150 mm Bench Distance Between Centers 300 mm Bed Length 750 mm. Feed Change System None C.S.D. 2 Steps No. of Spindle Speeds 2	250	L 90 W 40 H 70
62	1	122	Lathe Swing O.B. 240 mm Swing O.C. 150 mm. Bench Distance B.C. 300 mm Bed L. 750 mm. Feed C.S. None C.S.D. 2 Steps No. of S.S. 2	250	L 90 W 40 H 70
63	1	123	Lathe Swing O.B. 400 mm Swing O.C. 322 mm. Engine Distance B.C. 750 mm Bed L. 1920 mm. Feed C.S. Cone Pulley C.S.D. 5 Steps No. of S.S. 10	1,000	L 210 W 50 H 120
64	1	124	Lathe Swing O.B. 350 mm Swing O.C. 280 mm. Engine Distance B.C. 750 mm Bed L. 1900 mm. Feed C.S. Cone pulley C.S.D. 5 Steps No. of S.S. 10	1,000	L 200 W 90 H 120
65	1	125	Lathe Swing O.B. 180 mm Swing O.C. 160 mm. Engine Distance B.C. 430 mm Bed L. 900 mm. Feed C.S. Gear No. of S.S. 12 I.M.D. A.C. 3/4 HP 60 ~ 220V 1750 R.P.M.	380	L 110 W 50 H 110
66	1	126	Lathe Swing O.B. 180 mm Swing O.C. 160 mm. Engine Distance B.C. 430 mm Bed L. 900 mm. Feed C.S. Gear No. of S.S. 12 I.M.D. A.C. 3/4 HP 60 ~ 220V 1750 R.P.M.	380	L 110 W 50 H 110
67	1	127	Lathe Swing O.B. 350 mm Swing O.C. 270 mm. Engine Distance B.C. 750 mm Bed L. 1950 mm. Feed C.S. Cone Pulley	1,100	L 220 W 65 H 115

ARSENAL
REFECTURE
ILITY

PLANT EVALUATION

R E M O V A B L E

5	6	7	8	9	9A	10	11	12	13	14	15	16	
Weight (Kg)	Packing Size Length Width Height (cm)	Maker and Country	Year-Made-or Installed	DONT USE	Original Cost	Purchase Price of Removable Equipment	Conversion Factor	Purchase Price 1989 Yen	Life Expectancy	Future Life	Salvage Value	Depreciation Factor	Dep
40,970 40,980						243,703 255,714		250,050					16
250	L 90 W 40 H 70	WAKAYAMA JAPAN	1937		(E) 970	924	97.5	900	25	14	15	62.6	5
250	L 90 W 40 H 70	WAKAYAMA JAPAN	1937		(E) 970	924	97.5	900	25	14	15	62.6	5
1,000	L 210 W 50 H 120	NILES BEMENT U.S.A.	1907		(E) 987	940	370.6	3,483	25	0	15	15.0	5
1,000	L 200 W 90 H 120	NILES BEMENT U.S.A.	1907		(E) 745	710	370.6	2,631	25	0	15	15.0	1.3
380	L 110 W 50 H 110	TOA JAPAN	1943		(E) 3,104	2,957	76.4	2,259	25	20	15	83.0	1.0
380	L 110 W 50 H 110	TOA JAPAN	1943		(E) 3,104	2,957	76.4	2,259	25	20	15	83.0	1.0
1,100	L 220 W 65	NILES BEMENT	1907		(E) 869	828	370.6	3,068	25	0	15	15.0	4

SHEET 7 OF 68 SHEETS

DATE 11 JULY 1948

										NON-REMOVABLE	
14	15	16	17	18	19	20	21	22	23		
Salvage Value	Depreciation Factor	Depreciated Value	Other Deductions	Reason-For Other Deductions	Deduction Yen	Total Extra Deduction Yen	Total Depreciated Value	Non-Removable Equipment	Non-Removable Value		
		161,444					156,885	4,808	3,211		
4	15	62.6	563	V Belt Lever Small parts	Missing Missing Missing	9 3 10	22	541	16	11	
4	15	62.6	563	Tool Post V Belt Small parts	Missing Missing Missing	25 9 10	44	519	16	11	
0	15	15.0	522	Change Gears	Missing	(60)	(60)	522	16	10	
0	15	15.0	394	Chuck Center Change Gears	Missing Missing Missing	(40) (5) (40)	(85)	394	12	7	
20	15	83.0	1,874	Center	Missing	5	5	1,869	56	36	
20	15	83.0	1,874	Center Tool post Handle	Missing Missing	5 5	10	1,864	56	36	
0	15	15.0	460	Chuck Center Handle	Missing Missing	(40) (5)	(60)	460	13	9	

64	1	124	Lathe Swing O.B. 350mm. Swing O.C. 280mm. Engine Distance B.C. 750mm. Bed L. 1900mm. Feed C.S. Cone pulley C.S.D. 5 Steps No. of S.S. 10	1.000	L 200 W 90 H 120	NIL BE U
65	1	125	Lathe Swing O.B. 180mm. Swing O.C. 160mm. Engine Distance B.C. 430mm. Bed L. 900mm. Feed C.S. Gear No. of S.S. 12 I.M.D. A.C. 3/4 HP 60 ~ 220V 1750 R.P.M.	380	L 110 W 50 H 110	TO J
66	1	126	Lathe Swing O.B. 180mm. Swing O.C. 160mm. Engine Distance B.C. 430mm. Bed L. 900mm. Feed C.S. Gear No. of S.S. 12 I.M.D. A.C. 3/4 HP 60 ~ 220V 1750 R.P.M.	380	L 110 W 50 H 110	TO J
67	1	127	Lathe Swing O.B. 350mm. Swing O.C. 270mm. Engine Distance B.C. 750mm. Bed L. 1950mm. Feed C.S. Cone Pulley C.S.D. 5 Steps No. of S.S. 10	1.100	L 220 W 65 H 115	NIL BE U
68	1	128	Lathe Swing O.B. 300mm. Swing O.C. 240mm. Engine Distance B.C. 900mm. Bed L. 1900mm. Feed C.S. Cone pulley C.S.D. 4 Steps No. of S.S. 8	1.000	L 210 W 70 H 100	NIL BE U
69	1	129	Lathe Swing O.B. 300mm. Swing O.C. 240mm. Engine Distance B.C. 900mm. Bed L. 1900mm. Feed C.S. Cone Pulley C.S.D. 4 Steps No. of S.S. 8	1.000	L 200 W 90 H 120	NIL BE U
70	1	130	Lathe Swing O.B. 350mm. Swing O.C. 220mm. Engine Distance B.C. 875mm. Bed L. 1680mm. Feed C.S. Cone Pulley C.S.D. 4 Steps No. of S.S. 8	850	L 210 W 80 H 120	NIL BE U

NOTES : NO Dittos Allowed in Spaces
Crossline All Spaces Not Used (As Shown Above)

Page Total
Cumulative Total
7,210
48,180
~~40,970~~

1,000	L 200 W 90 H 120	NILES BEMENT 1907 U.S.A.	(E) 745	710	370.6	2,631	25	0	15	15.0	1.3
380	L 110 W 50 H 110	TOA JAPAN 1943	(E) 3,104	2,957	76.4	2,259	25	20	15	83.0	1.8
380	L 110 W 50 H 110	TOA JAPAN 1943	(E) 3,104	2,957	76.4	2,259	25	20	15	83.0	1.8
1,100	L 220 W 65 H 115	NILES BEMENT 1907 U.S.A.	(E) 869	828	370.6	3,068	25	0	15	15.0	4
1,000	L 210 W 70 H 100	NILES BEMENT 1907 U.S.A.	(E) 854	814	370.6	3,016	25	0	15	15.0	4
1,000	L 200 W 90 H 120	NILES BEMENT 1907 U.S.A.	(E) 745	710	370.6	2,631	25	0	15	15.0	3
850	L 210 W 80 H 120	NILES BEMENT 1907 U.S.A.	(E) 890	848	370.6	3,142	25	0	15	15.0	4
7,210 48,180 48,150			13,238	12,612		24,289					
			269,152	256,355		274,343					

0	15	15.0	394	Chuck Center Change Gears	Missing Missing Missing	(40) (5) (40)	(85)	394	12	7
20	15	83.0	1,874	Center	Missing	5	5	1,869	56	36
20	15	83.0	1,874	Center Tool post Handle	Missing Missing	5 5	10	1,864	56	36
0	15	15.0	460	Chuck Center Handle	Missing Missing Missing	(40) (5) (10)	(60)	460	13	9
0	15	15.0	452	Chuck Center Change Gears	Missing Missing Missing	(40) (1) (40)	(81)	452	13	9
0	15	15.0	394	Chuck Center Gear Covers Change Gears	Missing Missing Missing Missing	(40) (1) (5) (40)	(86)	394	11	8
0	15	15.0	471	Chuck Tool post Handle Small parts	Missing Missing Missing	(40) (1) (5)	(46)	471	14	9
			2567					7,486	223	146
			169,021					164,391	5,021	3,359

A CODE NUMBER 32 - 31 (A)
 B NAME OF PLANT AMANOKAWA PLANT HIRAKATA ARSENAL
 C LOCATION NO 29, OKA, HIRAKATA-SHI, OSAKA PREFECTURE
 D INDUSTRIAL GROUP MILITARY ARSENAL
 E SECTION OF EVALUATION INTEGRATED FACILITY
 F TYPE OF FACILITY MACHINE SHOP

1	2	3	4	5	6
Item No.	Bldg. No.	Inventory No.	Name-Type Specifications Accessories & Spare parts	Weight (Kp)	Packing Size Length Width Height (cm)
			BROUGHT FORWARD	48.180 48.750	
71	1	131	Lathe Swing Over Bed 350mm Swing Over Carriage 220mm Engine Distance Between Centers 975mm Bed Length 1680mm Feed Change System Cone Pulley C.S.D. 4 Steps No. of Spindle Speeds 8	850	L 210 W 80 H 120
72	1	132	Lathe Swing O. B. 420mm Swing O. C. 250mm Engine Distance B. C. 1042mm Bed L. 1970mm Feed C. S. Cone Pulley C.S.D. 5 Steps No. of S. S. 10	1.000	L 210 W 80 H 135
73	1	133	Lathe Swing O. B. 420mm Swing O. C. 250mm Engine Distance B. C. 1042mm Bed L. 1970mm Feed C. S. Cone Pulley C.S.D. 5 Steps No. of S. S. 10	1.000	L 210 W 80 H 135
74	1	134	Lathe Swing O. B. 400mm Swing O. C. 270mm Engine Distance B. C. 750mm Bed L. 1830mm Feed C. S. Quick Hand C.S.D. 4 Steps No. of S. S. 8	950	L 210 W 90 H 120
75	1	135	Lathe Swing O. B. 400mm Swing O. C. 270mm Engine Distance B. C. 750mm Bed L. 1830mm Feed C. S. Quick Hand C.S.D. 4 Steps No. of S. S. 8	950	L 210 W 90 H 120
76	1	136	Lathe Swing O. B. 300mm Swing O. C. 240mm Engine Distance B. C. 750mm Bed L. 1900mm Feed C. S. Cone Pulley C.S.D. 4 Steps No. of S. S. 8	980	L 210 W 70 H 110
77	1	137	Lathe Swing O. B. 300mm Swing O. C. 240mm Engine Distance B. C. 750mm Bed L. 1900mm Feed C. S. Cone Pulley C.S.D. 4 Steps No. of S. S. 8	980	L 210 W 70 H 110
78	1	138	Lathe Swing O. B. 300mm Swing O. C. 220mm Engine Distance B. C. 750mm Bed L. 1680mm Feed C. S. Cone Pulley	850	L 210 W 80 H 120

ARSENAL
REFLECTURE

PLANT EVALUATION

R E M O V A B L E

5	6	7	8	9	9A	10	11	12	13	14	15	16	
Weight (Kg)	Packing Size Length Width Height (cm)	Maker and Country	Year-Made-or Installed	DONT USE	Original Cost	Purchase Price of Removable Equipment	Conversion Factor	Purchase Price 1930 Yen	Life Expectancy	Future Life	Salvage Value	Depreciation Factor	Dep
48.180 48.180					269,152	256,355 257,355		270,343					16
850	L 210 W 80 H 120	Niles Bement U.S.A.	1907	(E)	890	848	370.6	3,142	25	0	15	15.0	4
1,000	L 210 W 80 H 135	F.E. Reed U.S.A.	1907	(E)	868	827	370.6	3,064	25	0	15	15.0	4
1,000	L 210 W 80 H 135	F.E. Reed U.S.A.	1907	(E)	868	827	370.6	3,064	25	0	15	15.0	4
950	L 210 W 90 H 120	J. Hendry U.S.A.	1907	(F)	1,142	1,088	370.6	4,032	25	0	15	15.0	6
950	L 210 W 90 H 120	J. Hendry U.S.A.	1907	(E)	1,142	1,088	370.6	4,032	25	0	15	15.0	6
980	L 210 W 70 H 110	Niles Bement U.S.A.	1907	(E)	745	710	370.6	2,631	25	0	15	15.0	5
980	L 210 W 70 H 110	Niles Bement U.S.A.	1907	(E)	745	710	370.6	2,631	25	0	15	15.0	5
850	L 210 W 80	Niles Bement U.S.A.	1907	(E)	890	848	370.6	3,142	25	0	15	15.0	4

SHEET 8 OF 68 SHEETS

DATE 11 JULY 1948

								NON-REMOVABLE	
14	15	16	17	18	19	20	21	22	23
Salvage Value	Depreciation Factor	Depreciated Value	Other Deductions	Reason-For Other Deductions	Deduction Yen	Total Extra Deduction Yen	Total Depreciated Value	Non-Removable Equipment	Non-Removable Value
		169.011					164.371	5,071	3,757
15	15.0	471	Back Gear Handle	Missing	(5)		471	14	9
			Chuck	Missing	(30)	(27)			
			Tool Post Handle	Broken	(2)				
			Small Parts	Missing	(10)				
15	15.0	459	Feed Change Cone	Missing	(10)		459	14	8
			Chuck	Missing	(30)	(50)			
			Small Parts	Missing	(10)				
15	15.0	459	Tool Post Handle	Missing	(2)		459	14	8
			Chuck	Missing	(30)	(42)			
			Small Parts	Missing	(10)				
15	15.0	604	Tool Post Handle	Missing	(2)		604	18	12
			Chuck	Missing	(30)	(42)			
			Small Parts	Missing	(10)				
15	15.0	604	Chuck	Missing	(30)		604	18	12
			Tool Post	Missing	(2)	(38)			
			Back Gear Cover	Missing	(1)				
			Small Parts	Missing	(5)				
0	15	15.0	Chuck	Missing	(30)		394	12	7
			2 Handles	Missing	(6)	(62)			
			Counter Shaft	Missing	(20)				
			Small Parts	Missing	(6)				
0	15	15.0	Chuck	Missing	(30)		394	12	7
			change Gears	Missing	(20)	(51)			
			Center	Missing	(1)				
0	15	15.0	Counter Shaft	Missing	(20)		471	14	9
			Small Parts	Missing	(6)	(26)			

74	1	134	Lathe Swing O. B. 400 mm Swing O. C. 270 mm Engine Distance B. C. 750 mm Bed L. 1,830 mm Feed C. S. Quick Hand C. S. D. 4 Steps No. of S. S. 8	950	L 210 W 90 H 120
75	1	135	Lathe Swing O. B. 400 mm Swing O. C. 270 mm Engine Distance B. C. 750 mm Bed L. 1,830 mm Feed C. S. Quick Hand C. S. D. 4 Steps No. of S. S. 8	950	L 210 W 90 H 120
76	1	136	Lathe Swing O. B. 300 mm Swing O. C. 240 mm Engine Distance B. C. 750 mm Bed L. 1,900 mm Feed C. S. Cone Pulley C. S. D. 4 Steps No. of S. S. 8	980	L 210 W 70 H 110
77	1	137	Lathe Swing O. B. 300 mm Swing O. C. 240 mm Engine Distance B. C. 750 mm Bed L. 1,900 mm Feed C. S. Cone Pulley C. S. D. 4 Steps No. of S. S. 8	980	L 210 W 70 H 110
78	1	138	Lathe Swing O. B. 300 mm Swing O. C. 220 mm Engine Distance B. C. 750 mm Bed L. 1,680 mm Feed C. S. Cone Pulley C. S. D. 4 Steps No. of S. S. 8	850	L 210 W 80 H 120
79	1	139	Lathe Swing O. B. 300 mm Swing O. C. 220 mm Engine Distance B. C. 750 mm Bed L. 1,680 mm Feed C. S. Cone Pulley C. S. D. 4 Steps No. of S. S. 8	850	L 220 W 85 H 121
80	1	140	Lathe Swing O. B. 300 mm Swing O. C. 220 mm Engine Distance B. C. 750 mm Bed L. 1,680 mm Feed C. S. Cone Pulley C. S. D. 4 Steps No. of S. S. 8	850	L 210 W 80 H 120

NOTES: NO Dittos Allowed in Spaces
Crossline All Spaces Not Used (As Shown Above)

Page-Total 9260
Cumulative-Total 57,440
~~57,440~~

950	L 210 W 90 H 120	J. Hendgy U.S.A. 1907	(D) 1.142	1.088	370.6	4,032	25.0	15	15.0	6
950	L 210 W 90 H 120	J. Hendgy U.S.A. 1907	(E) 1.142	1.088	370.6	4,032	25.0	15	15.0	6
980	L 210 W 70 H 110	Niles Bement U.S.A. 1907	(E) 745	710	370.6	2,631	25.0	15	15.0	3
980	L 210 W 70 H 110	Niles Bement U.S.A. 1907	(F) 745	710	370.6	2,631	25.0	15	15.0	3
850	L 210 W 80 H 120	Niles Bement U.S.A. 1907	(E) 890	848	370.6	3,142	25.0	15	15.0	4
850	L 220 W 80 H 121	Niles Bement U.S.A. 1907	(E) 890	848	370.6	3,142	25.0	15	15.0	4
850	L 210 W 80 H 120	Niles Bement U.S.A. 1907	(E) 890	848	370.6	3,142	25.0	15	15.0	4
9260			9,070	8,642		32,022				8
57,440			278,222	264,997		306,365				17
57,470				259,997						

15	15.0	604	Chuck	Missing	(30)	(42)	604	18	12
			Small Parts	Missing	(10)				
15	15.0	604	Chuck	Missing	(30)		604	18	12
			Tool Post	Missing	(2)	(38)			
			Back Gear Cover	Missing	(1)				
			Small Parts	Missing	(5)				
15	15.0	394	Chuck	Missing	(30)		394	12	7
			2 Handles	Missing	(6)	(62)			
			Counter Shaft	Missing	(20)				
			Small Parts	Missing	(6)				
15	15.0	394	Chuck	Missing	(30)		394	12	7
			change Gears	Missing	(20)	(51)			
			Center	Missing	(1)				
15	15.0	471	Counter Shaft	Missing	(20)		471	14	9
			Small Parts	Missing	(6)	(26)			
15	15.0	471	Back Gear Handle	Broken	(3)	(9)	471	14	9
			Small Parts	Missing	(6)				
15	15.0	471	Tool Post Handle	Missing	(2)		471	14	9
			Small Parts	Missing	(6)	(8)			
		4778					4798	144	90
		173,809					169,169	5,175	3,447

A CODE NUMBER 32 - 31 (A)
 B NAME OF PLANT AMANOKAWA PLANT HIRAKATA ARSENAL
 C LOCATION NO 29, OKA, HIRAKATA-SHI, OSAKA PREFECTURE
 D INDUSTRIAL GROUP MILITARY ARSENAL
 E SECTION OF EVALUATION INTEGRATED FACILITY
 F TYPE OF FACILITY MACHINE SHOP

1	2	3	4	5	6
Item No.	Bldg. No.	Inventory No.	Name-Type-Specifications Accessories & Spare parts	Weight (Kg)	Packing Size Length Width Height (cm)
			BROUGHT FORWARD	57,440 58,410	
81	1	141	Lathe Swing Over Bed 325mm Swing Over Carriage 220mm Engine Distance Between Centers 750mm Bed Length 1680mm Feed Change System Cone Pulley C.S.D. 4 Steps No. of Spindle speeds 8	850	L 220 W 65 H 115
82	1	142	Lathe Swing O.B. 420mm Swing O.C. 250mm Engine Distance B.C. 840mm Bed L. 1650mm Feed C.S. Cone Pulley C.S.D. 5 Steps No. of S.S. 10	850	L 210 W 90 H 130
83	1	143	Lathe Swing O.B. 420mm Swing O.C. 250mm Engine Distance B.C. 840mm Bed L. 1650mm Feed C.S. Cone Pulley C.S.D. 5 Steps No. of S.S. 10	850	L 210 W 90 H 130
84	1	144	Lathe Swing O.B. 420mm Swing O.C. 250mm Engine Distance B.C. 840mm Bed L. 1650mm Feed C.S. Cone Pulley C.S.D. 5 Steps No. of S.S. 10	850	L 210 W 90 H 180
85	1	145	Lathe Swing O.B. 300mm Swing O.C. 240mm Engine Distance B.C. 900mm Bed L. 1640mm Feed C.S. Cone Pulley C.S.D. 4 Steps No. of S.S. 8	850	L 210 W 70 H 100
86	1	146	Lathe Swing O.B. 350mm Swing O.C. 300mm Engine Distance B.C. 750mm Bed L. 1600mm Feed G.S. Cone Pulley C.S.D. 4 Steps No. of S.S. 8	850	L 210 W 90 H 110
87	1	147	Lathe Swing O.B. 480mm Swing O.C. 250mm Engine Distance B.C. 1,125mm Bed L. 2,470mm	1,450	L 280 W 100

A ARSENAL
REFECTURE

PLANT EVALUATION

ILITY

R E M O V A B L E

5	6	7	8	9	9A	10	11	12	13	14	15	
Weight (Kg)	Packing Size Length Width Height (cm)	Maker and Country	Year-Made or Installed	DON'T USE	Original Cost	Purchase Price of Removable Equipment	Conversion Factor	Purchase Price 1989 Yen	Life Expectancy	Future Life	Salvage Value	Depreciation Factor
57,440 57,440					278,222	264,997 277,997		306,365				
850	L 220 W 65 H 115	NILES BEMENT 1907 U.S.A.			890	848	370.6	3,142	25	0	15	15.0
850	L 210 W 90 H 130	NILES BEMENT 1907 U.S.A.			987	940	370.6	3,483	25	0	15	15.0
850	L 210 W 90 H 130	NILES BEMENT 1907 U.S.A.			987	940	370.6	3,483	25	0	15	15.0
850	L 210 W 90 H 180	NILES BEMENT 1907 U.S.A.			987	940	370.6	3,483	25	0	15	15.0
850	L 210 W 70 H 100	NILES BEMENT 1907 U.S.A.			745	710	370.6	2,631	25	0	15	15.0
850	L 210 W 90 H 110	NILES BEMENT 1907 U.S.A.			727	693	370.6	2,568	25	0	15	15.0
1,445	L 280 W 100	NILES BEMENT 1907			674	642	370.6	2,379	25	0	15	15.0

SHEET 9 OF 68 SHEETS

DATE 11 JULY, 1948

											NON-REMOVABLE	
3	14	15	16	17	18	19	20	21	22	23		
Life	Salvage Value	Depreciation Factor	Depreciated Value	Other Deductions	Reason-For Other Deductions	Deduction Yen	Total Extra Deduction Yen	Total Depreciated Value	Non-Removable Equipment	Non-Removable Value		
			173807					162169	5,175	3,447		
0	15	15.0	471	Change Gear	Missing	(36)		471	14	9		
				Small parts	Missing	(6)	(42)					
0	15	15.0	522	Small parts	Missing	(6)	(6)	522	16	10		
								522	16	10		
0	15	15.0	522	Back Gear Handle	Missing	(1)	(1)	522	16	10		
0	15	15.0	394	Tool Post Handle	Missing	(1)		394	12	7		
				Back Gear Handle	Missing	(2)	(9)					
				Small parts	Missing	(6)						
0	15	15.0	385	Tool Post Handle	Missing	(2)		385	10	8		
				Chuck	Missing	(10)	(18)					
				Small parts	Missing	(6)						
0	15	15.0	356	Chuck Gear Covers	Missing	(15)		356	10	7		
				Center	Missing	(1)	(21)					
				Feed Worm	Missing	(12)						

84	/	144	C.S.D. 5 Steps No. of S.S. 10 Lathe Swing O.B. 420mm. Swing O.C. 250mm. Engine Distance B.C. 840mm. Bed L. 1650mm. Feed C.S. Cone Pulley	850	L 210 W 90 H 180	NIL BE U.
85	/	145	C.S.D. 5 Steps No. of S.S. 10 Lathe Swing O.B. 300mm. Swing O.C. 240mm. Engine Distance B.C. 900mm. Bed L. 1640mm. Feed C.S. Cone Pulley	850	L 210 W 70 H 100	NIL BE U.
86	/	146	C.S.D. 4 Steps No. of S.S. 8 Lathe Swing O.B. 350mm. Swing O.C. 300mm. Engine Distance B.C. 750mm. Bed L. 1600mm. Feed G.S. Cone Pulley	850	L 210 W 90 H 110	NIL BE U.
87	/	147	C.S.D. 4 Steps No. of S.S. 8 Lathe Swing O.B. 480mm. Swing O.C. 250mm. Engine Distance B.C. 1,125mm. Bed L. 2470mm. Feed C.S. Quick Hand	1450	L 280 W 100 H 150	NIL BE U.
88	/	148	C.S.D. 4 Steps No. of S.S. 8 Lathe Swing O.B. 440mm. Swing O.C. 260mm. Engine Distance B.C. 1,050mm. Bed L. 2500mm. Feed C.S. Cone Pulley	1450	L 285 W 90 H 120	NIL BE U.
89	/	149	C.S.D. 3 Steps No. of S.S. 6 Lathe Swing O.B. 400mm. Swing O.C. 260mm. Engine Distance B.C. 1,150mm. Bed L. 2500mm. Feed C.S. Cone Pulley	1450	L 285 W 90 H 120	NIL BE U.
90	/	150	C.S.D. 3 Steps No. of S.S. 6 Lathe Swing O.B. 420mm. Swing O.C. 260mm. Engine Distance B.C. 840mm. Bed L. 1650mm. Feed C.S. Cone Pulley	850	L 210 W 90 H 120	NIL BE U.

NOTES : NO Dittos Allowed in Spaces

Crossline All Spaces Not Used (As Shown Above)

Page-Total

Cumulative-Total

10300
67,740
57,440

850	L	270	NILES	(E)	987	940	370.6	3,483	25	0	15	15.0	5
	W	90	BEMENT 1907										
	H	180	U.S.A.										
850	L	210	NILES	(E)	745	710	370.6	2,631	25	0	15	15.0	3
	W	70	BEMENT 1907										
	H	100	U.S.A.										
850	L	270	NILES	(E)	727	693	370.6	2,568	25	0	15	15.0	3
	W	90	BEMENT 1907										
	H	110	U.S.A.										
1.450	L	280	NILES	(E)	674	642	370.6	2,379	25	0	15	15.0	3
	W	100	BEMENT 1907										
	H	150	U.S.A.										
1.450	L	285	NILES	(E)	1,068	1,018	370.6	3,772	25	0	15	15.0	5
	W	90	BEMENT 1907										
	H	120	U.S.A.										
1.450	L	285	NILES	(E)	1,068	1,018	370.6	3,772	25	0	15	15.0	5
	W	90	BEMENT 1907										
	H	120	U.S.A.										
850	L	210	NILES	(E)	987	940	370.6	3,483	25	0	15	15.0	5
	W	90	BEMENT 1907										
	H	120	U.S.A.										
10,300					9,120	8,687		32,196					
67,740						273,686							
69,710					287,342	262,686		338,561					12

0	15	15.0	522	Back Gear Handle Missing	(1)	(1)	522	16	10
0	15	75.0	394	Tool Post Handle Missing Back Gear Handle Missing Small Parts Missing	(1) (2) (6)	(9)	394	12	7
0	15	15.0	385	Tool Post Handle Missing Chuck Missing Small Parts Missing	(2) (10) (6)	(18)	385	10	8
0	15	75.0	356	Chuck Missing Gear Covers Missing Center Missing Feed Worm Missing fits spindle Missing	(15) (1) (1) (2) (2)	(21)	356	10	7
0	15	15.0	565	Chuck Missing Change Gears Missing Center Missing	(15) (24) (1)	(40)	565	16	11
0	15	15.0	565	Change Gears Missing	(20)	(20)	565	16	11
0	15	15.0	522	Chuck Missing Feed Shaft Broken Small Parts Missing	(15) (15) (6)	(36)	522	16	10
			4824				4,824	142	93
			178.633				173,993	138 5,317 5,213	3,540

A CODE NUMBER 32 - 31 (A)
 B NAME OF PLANT AMANOKAWA PLANT HIRAKATA ARSENAL
 C LOCATION NO 29, OKA, HIRAKATA-SHI, OSAKA PREFECTURE
 D INDUSTRIAL GROUP MILITARY ARSENAL
 E SECTION OF EVALUATION INTEGRATED FACILITY
 F TYPE OF FACILITY MACHINE SHOP

1	2	3	4	5	6
Item No.	Bldg. No.	Inventory No.	Name-Type-Specifications Accessories & Spare parts	Weight (Kg)	Packing Size Length Width Height (cm)
BROUGHT FORWARD				27,940 69,770	
91	1	151	Lathe Swing Over Bed 440mm. Swing Over Carriage 260 m.m. Engine Distance Between Centers 840mm. Bed Length 1,650 m.m. Feed Change System Cone Pulley C.S.D. 5 Steps No. of Spindle Speeds 10	850	L 210 NILA W 90 U. H 120
92	1	152	Lathe Swing O.B. 440 m.m. Swing O.C. 260 m.m. Engine Distance B.C. 840 m.m. Bed L. 1,680 m.m. Feed C.S. Cone Pulley C.S.D. 5 Steps No. of S.S. 10	850	L 200 NILES W 80 U. H 120
93	1	153	Lathe Swing O.B. 440 m.m. Swing O.C. 260 m.m. Engine Distance B.C. 840 m.m. Bed L. 1,680 m.m. Feed C.S. Cone Pulley C.S.D. 5 Steps No. of S.S. 10	850	L 200 NILES W 80 U. H 120
94	1	154	Lathe Swing O.B. 440 m.m. Swing O.C. 260 m.m. Engine Distance B.C. 760 m.m. Bed L. 1,680 m.m. Feed C.S. Cone Pulley C.S.D. 5 Steps No. of S.S. 10	850	L 200 NILES W 80 U. H 120
95	1	155	Lathe Swing O.B. 440 m.m. Swing O.C. 260 m.m. Engine Distance B.C. 760 m.m. Bed L. 1,680 m.m. Feed C.S. Cone Pulley C.S.D. 5 Steps No. of S.S. 10	850	L 200 NILES W 80 U. H 120
96	1	156	Lathe Swing O.B. 400 m.m. Swing O.C. 260 m.m. Engine Distance B.C. 750 m.m. Bed L. 1,650 m.m. Feed C.S. Cone Pulley C.S.D. 5 Steps No. of S.S. 10	850	L 210 NILES W 90 U. H 120
97	1	157	Lathe Swing O.B. 440 m.m. Swing O.C. 260 m.m. Engine Distance B.C. 760 m.m. Bed L. 1,680 m.m. Feed C.S. Cone Pulley C.S.D. 5 Steps No. of S.S. 10	850	L 200 NILES W 80 U. H 120
98	1	158	Lathe Swing O.B. 400 m.m. Swing O.C. 220 m.m. Engine Distance B.C. 750 m.m. Bed L. 1,680 m.m. Feed C.S. Cone Pulley C.S.D. 4 Steps No. of S.S. 8	850	L 200 NILES W 80 U. H 120

775013

ARSENAL
PREFECTURE
FACILITY

PLANT EVALUATION

R E M O V A B L E

5	6	7	8	9	9A	10	11	12	13	14	15	
Weight (Kg)	Packing Size Length Width Height (cm)	Maker and Country	Year-Made-or Installed	DON'T USE	Original Cost	Purchase Price of Removable Equipment	Conversion Factor	Purchase Price 1988 Yen	Life Expectancy	Future Life	Salvage Value	Depreciation Factor
67,940 67,710						273,688 215,658		338,561				
850	L 210 W 90 H 120	NILES BEMENT U.S.A.	1907		987	940	370.6	3,483	25	0	15	15.0
850	L 200 W 80 H 120	NILES BEMENT U.S.A.	1907		745	710	370.6	2,631	25	0	15	15.0
850	L 200 W 80 H 120	NILES BEMENT U.S.A.	1907		745	710	370.6	2,631	25	0	15	15.0
850	L 200 W 80 H 120	NILES BEMENT U.S.A.	1907		745	710	370.6	2,631	25	0	15	15.0
850	L 210 W 90 H 120	NILES BEMENT U.S.A.	1907		987	940	370.6	3,483	25	0	15	15.0
850	L 200 W 80 H 120	NILES BEMENT U.S.A.	1907		745	710	370.6	2,631	25	0	15	15.0
850	L 200 W 80 H 120	NILES BEMENT U.S.A.	1907		745	710	370.6	2,631	25	0	15	15.0
850	L 200 W 80 H 120	NILES BEMENT U.S.A.	1907		890	848	370.6	3,142	25	0	15	15.0

SHEET 10 OF 68 SHEETS

DATE 11 JULY 1948

											NON-REMOVABLE	
13	14	15	16	17	18	19	20	21	22	23		
Life	Salvage Value	Depreciation Factor	Depreciated Value	Other Deductions	Reason-For Other Deductions	Deduction Year	Total Extra Deduction Year	Total Depreciated Value	Non-Removable Equipment	Non-Removable Value		
			178.633					173,993	5,317	13,540		
0	15	15.0	522	Chuck	Missing	(15)	(15)	522	16	10		
0	15	15.0	394	Chuck Back Gear Handle	Missing Damaged	(15) (2)	(17)	394	11	8		
0	15	15.0	394	Chuck Small Parts	Missing Missing	(15) (6)	(21)	394	11	8		
0	15	15.0	394	Tool Post Handle Chuck Small Parts	Missing Missing Missing	(1) (15) (6)	(22)	394	11	8		
0	15	15.0	394	Tool Post Handle Chuck Small Parts	Missing Missing Missing	(4) (15) (6)	(22)	394	11	8		
0	15	15.0	522	Back Gear Handle Chuck Small Parts	Damaged Missing Missing	(1) (15) (6)	(22)	522	16	10		
5	0	15	394	Chuck Tool Post Handle	Missing Missing	(15) (1)	(16)	394	11	8		
5	0	15	471	Chuck Small Parts	Missing Missing	(15) (6)	(21)	471	14	9		

94	1	154	Lathe Swing O.B. 440 m.m. Swing O.C. 260 m.m. Engine Distance B.C. 760 m.m. Bed L. 1,680 m.m. Feed C.S. Cone Pulley C.S.D. 5 Steps No. of S.S. 10	850	L 200 W 80 H 120	NIL U
95	1	155	Lathe Swing O.B. 440 m.m. Swing O.C. 260 m.m. Engine Distance B.C. 760 m.m. Bed L. 1,680 m.m. Feed C.S. Cone Pulley C.S.D. 5 Steps No. of S.S. 10	850	L 200 W 80 H 120	NIL U
96	1	156	Lathe Swing O.B. 400 m.m. Swing O.C. 260 m.m. Engine Distance B.C. 750 m.m. Bed L. 1,650 m.m. Feed C.S. Cone Pulley C.S.D. 5 Steps No. of S.S. 10	850	L 210 W 90 H 120	NIL L
97	1	157	Lathe Swing O.B. 440 m.m. Swing O.C. 260 m.m. Engine Distance B.C. 760 m.m. Bed L. 1,680 m.m. Feed C.S. Cone Pulley C.S.D. 5 Steps No. of S.S. 10	850	L 200 W 80 H 120	NIL L
98	1	158	Lathe Swing O.B. 400 m.m. Swing O.C. 220 m.m. Engine Distance B.C. 750 m.m. Bed L. 1,680 m.m. Feed C.S. Cone Pulley C.S.D. 4 Steps No. of S.S. 8	850	L 200 W 80 H 120	NIL
99	1	159	Lathe Swing O.B. 440 m.m. Swing O.C. 260 m.m. Engine Distance B.C. 750 m.m. Bed L. 1,650 m.m. Feed C.S. Cone Pulley C.S.D. 5 Steps No. of S.S. 10	850	L 210 W 90 H 120	NIL
100	1	160	Lathe Swing O.B. 440 m.m. Swing O.C. 260 m.m. Engine Distance B.C. 750 m.m. Bed L. 1,650 m.m. Feed C.S. Cone Pulley C.S.D. 5 Steps No. of S.S. 10	850	L 210 W 90 H 120	NIL

NOTES : NO Dittos Allowed in Spaces
Crossline All Spaces Not Used (As Shown Above)

Page-Total 8,500
Cumulative-Total 76,240
~~76,710~~

850	L 200 W 80 H 120	NILES BEMENT U.S.A. 1907	(E) 745	710 370.6	2,631	25	0	15	15.0
850	L 200 W 80 H 120	NILES BEMENT U.S.A. 1907	(E) 745	710 370.6	2,631	25	0	15	15.0
850	L 210 W 90 H 120	NILES BEMENT U.S.A. 1907	(E) 987	940 370.6	3,483	25	0	15	15.0
850	L 200 W 80 H 120	NILES BEMENT U.S.A. 1907	(E) 745	710 370.6	2,631	25	0	15	15.0
850	L 200 W 80 H 120	NILES BEMENT U.S.A. 1907	(E) 890	848 370.6	3,142	25	0	15	15.0
850	L 210 W 90 H 120	NILES BEMENT U.S.A. 1907	(E) 987	940 370.6	3,483	25	0	15	15.0
850	L 210 W 90 H 120	NILES BEMENT U.S.A. 1907	(E) 987	940 370.6	3,483	25	0	15	15.0
8,500			8,563	8,158	30,229				
76,240			295,905	281,844	368,790				
26,740				276,844					

0	15	15.0	394	Tool Post Handle Missing (1)			394	11	8
				Chuck Missing (15)	(22)				
				Small Parts Missing (6)					
0	15	15.0	394	Tool Post Handle Missing (1)			394	11	8
				Chuck Missing (15)	(22)				
				Small Parts Missing (6)					
0	15	15.0	522	Back Gear Handle Damaged (1)			522	16	10
				Chuck Missing (15)	(22)				
				Small Parts Missing (6)					
0	15	15.0	394	Chuck Missing (15)			394	11	8
				Tool Post Handle Missing (1)	(16)				
0	15	15.0	471	Chuck Missing (15)			471	14	9
				Small Parts Missing (6)	(21)				
0	15	15.0	522	Chuck Missing (15)			522	16	10
					(15)				
0	15	15.0	522	Chuck Missing (15)			522	16	10
				Small Parts Missing (6)	(21)				
			4,529				4,529	133	89
			183,162				178,522	5,450	36,29
								5,446	

A CODE NUMBER 32 - 31(A)
 B. NAME OF PLANT AMANOKAWA PLANT HIRAKATA ARSENAL
 C LOCATION NO 29, OKA, HIRAKATA-SHI, OSAKA PREFECTURE
 D INDUSTRIAL GROUP MILITARY ARSENAL
 E SECTION OF EVALUATION INTEGRATED FACILITY
 F TYPE OF FACILITY MACHINE SHOP

1	2	3	4	5	6	
Item No.	Bldg. No.	Inventory No.	Name-Type-Specifications Accessories & Spare parts	Weight (Kg)	Packing Size Length Width Height (cm)	
			BROUGHT FORWARD	76,200 76,210		
101	1	161	Lathe Swing Over Bed 440 m.m. Swing Over Carriage 260 m.m. Engine Distance Between Centers 840 m.m. Bed Length 1,650 m.m. Feed Change System Case Pulley C.S.D. 5 Steps No. of Spindle Speeds 10	900	L 220 W 120 H 80	MILES
102	1	162	Lathe Swing O.B. 440 m.m. Swing O.C. 260 m.m. Engine Distance B.C. 840 m.m. Bed L. 1,650 m.m. Feed C.S. Case Pulley C.S.D. 5 Steps No. of S.S. 10	900	L 220 W 120 H 80	MILES
103	1	163	Lathe Swing O.B. 520 m.m. Swing O.C. 280 m.m. Engine Distance B.C. 1,850 m.m. Bed L. 2,760 m.m. Feed C.S. Quick Hand No. of S.S. 12 I.M.D. A.C. 7.5 HP 60 ~ 220V 1200 R.P.M.	2,700	L 370 W 130 H 160	SPRING
104	1	164	Lathe Swing O.B. 520 m.m. Swing O.C. 280 m.m. Engine Distance B.C. 1,850 m.m. Bed L. 2,760 m.m. Feed C.S. Quick Hand No. of S.S. 12 I.M.D. A.C. 7.5 HP 60 ~ 220V 1200 R.P.M.	2,700	L 330 W 110 H 140	SPRING
105	1	165	Lathe Swing O.B. 480 m.m. Swing O.C. 280 m.m. Engine Distance B.C. 1,370 m.m. Bed L. 2,300 m.m. Feed C.S. Quick Hand No. of S.S. 8 I.M.D. A.C. 7.5 HP 60 ~ 220V 1200 R.P.M.	2,000	L 290 W 95 H 110	MONA
106	1	166	Lathe Swing O.B. 480 m.m. Swing O.C. 280 m.m. Engine Distance B.C. 1,370 m.m. Bed L. 2,300 m.m. Feed C.S. Quick Hand No. of S.S. 8 I.M.D. A.C. 7.5 HP 60 ~ 220V 1200 R.P.M.	2,000	L 290 W 95 H 110	MONA
107	1	167	Lathe Swing O.B. 480 m.m. Swing O.C. 280 m.m. Engine Distance B.C. 1,970 m.m. Bed L. 2,910 m.m. Feed C.S. Quick Hand No. of S.S. 8 I.M.D. A.C. 10 HP 60 ~ 220V 1200 R.P.M.	3,000	L 330 W 110 H 140	MONA
108	1	168	Lathe Swing O.B. 480 m.m. Swing O.C. 280 m.m. Engine Distance B.C. 1,970 m.m. Bed L. 2,910 m.m. Feed C.S. Quick Hand No. of S.S. 8 I.M.D. A.C. 10 HP 60 ~ 220V 1200 R.P.M.	3,000	L 330 W 110 H 140	MONA
109	1	169	Lathe Swing O.B. 480 m.m. Swing O.C. 280 m.m. Engine Distance B.C. 1,970 m.m. Bed L. 2,910 m.m. Feed C.S. Quick Hand No. of S.S. 8 I.M.D. A.C. 10 HP 60 ~ 220V 1200 R.P.M.	2,000	L 290 W 95	MONA

TA ARSENAL
REFECTURE

CILITY

PLANT EVALUATION

R E M O V A B L E													
5	6	7	8	9	9A	10	11	12	13	14	15	D	
Weight (Kg)	Packing Size Length Width Height (cm)	Maker and Country	Year-Made-or Installed	DONT USE	Original Cost	Purchase Price of Removable Equipment	Conversion Factor	Purchase Price 1930 Yen	Life Expectancy	Future Life	Salvage Value	Depreciation Factor	D
76,200 76,210						281,840 295,894		368,790					
900	L 220 W 120 H 80	MILES BEMENT U.S.A.	1907		(E) 988	940	370.6	3,483	25	0	15	15.0	
900	L 220 W 120 H 80	MILES BEMENT U.S.A.	1907		(E) 987	940	370.6	3,483	25	0	15	15.0	
2,700	L 370 W 130 H 160	SPRING FIELD U.S.A.	1938		(E) 12,942	12,326	95.8	11,808	25	15	15	66.0	7
2,700	L 330 W 110 H 140	SPRING FIELD U.S.A.	1938		(E) 12,942	12,326	95.8	11,808	25	15	15	66.0	7
2,000	L 290 W 95 H 110	MONARCH U.S.A.	1938		(E) 11,413	10,870	95.8	10,413	25	15	15	66.0	
2,000	L 290 W 95 H 110	MONARCH U.S.A.	1938		(E) 11,413	10,870	95.8	10,413	25	15	15	66.0	
3,000	L 330 W 110 H 140	MONARCH U.S.A.	1938		(E) 12,112	11,536	95.8	11,051	25	15	15	66.0	
3,000	L 330 W 110 H 140	MONARCH U.S.A.	1938		(E) 12,112	11,536	95.8	11,051	25	15	15	66.0	
2,000	L 290 W 95	MONARCH U.S.A.	1938		(E) 12,112	11,536	95.8	11,051	25	15	15	66.0	

SHEET 11 OF 48 SHEETS

DATE 71 JULY 1948

											NON-REMOVABLE	
13	14	15	16	17	18	19	20	21	22	23		
Future Life	Salvage Value	Depreciation Factor	Depreciated Value	Other Deductions	Reason-For Other Deductions	Deduction Yen	Total Extra Deduction Yen	Total Depreciated Value	Non-Removable Equipment	Non-Removable Value		
			183,162					170,522	5,450	3,629		
0	15	15.0	522	Chuck Tool Post Handle	Missing	(75)	(15)	522	16	10		
0	15	15.0	522	Chuck Small Parts	Missing	(15)	(21)	522	16	10		
15	15	66.0	7,793	Oil Pipe Taper Attachment Steady Rest	Damaged	30	830	7,163	234	155		
15	15	66.0	7,793		Missing	400		7,793	234	155		
15	15	66.0	6,872		Damaged	200		6,872	205	138		
15	15	66.0	6,872	Taper Attachment Set	Missing	50	50	6,822	205	138		
5	15	15	7,293	Cooling Piping Taper Attachment Set	Damaged	30	50	7,213	218	145		
25	15	15	7,293	Taper Attachment	Missing	50	50	7,243	218	145		
25	15	15	7,293	Cooling Piping Taper Attachment Set	Damaged	30	120	7,173	218	145		

104	1	164	Engine Distance B.C. 1850 m.m. Bed L. 2760 m.m. Feed C.S. Quick Hand No. of S.S. 12 I.M.D. A.C. 7.5HP 60 220V 1200R.P.M. Lathe Swing O.B. 520 m.m. Swing O.C. 280 m.m.	2,700	H 160 L 330 W 110	SPRING
105	1	165	Engine Distance B.C. 1370 m.m. Bed L. 2300 m.m. Feed C.S. Quick Hand No. of S.S. 12 I.M.D. A.C. 7.5HP 60 220V 1200R.P.M. Lathe Swing O.B. 480 m.m. Swing O.C. 280 m.m.	2,000	H 140 L 290 W 95	MON
106	1	166	Engine Distance B.C. 1370 m.m. Bed L. 2300 m.m. Feed C.S. Quick Hand No. of S.S. 8 I.M.D. A.C. 7.5HP 60 220V 1200R.P.M. Lathe Swing O.B. 480 m.m. Swing O.C. 280 m.m.	2,000	H 110 L 290 W 95	MON
107	1	167	Engine Distance B.C. 1970 m.m. Bed L. 2910 m.m. Feed C.S. Quick Hand No. of S.S. 8 I.M.D. A.C. 10HP 60 220V 1200R.P.M. Lathe Swing O.B. 480 m.m. Swing O.C. 280 m.m.	3,000	H 140 L 330 W 110	MON
108	1	168	Engine Distance B.C. 1970 m.m. Bed L. 2910 m.m. Feed C.S. Quick Hand No. of S.S. 8 I.M.D. A.C. 10HP 60 220V 1200R.P.M. Lathe Swing O.B. 480 m.m. Swing O.C. 280 m.m.	3,000	H 140 L 330 W 110	MON
109	1	169	Engine Distance B.C. 1970 m.m. Bed L. 2910 m.m. Feed C.S. Quick Hand No. of S.S. 8 I.M.D. A.C. 7.5HP 60 220V 1200R.P.M. Lathe Swing O.B. 480 m.m. Swing O.C. 280 m.m.	2,000	H 110 L 290 W 95	MON
110	1	170	Engine Distance B.C. 1450 m.m. Bed L. 2175 m.m. Feed C.S. Quick Hand No. of S.S. 12 I.M.D. A.C. 7.5HP 60 220V 1200R.P.M. Lathe Swing O.B. 480 m.m. Swing O.C. 340 m.m.	2,000	H 110 L 290 W 95	SIL

NOTES : NO Dittos Allowed in Spaces
 Crossline All Spaces Not Used (As Shown Above)

Page-Total 21,200
 Cumulative-Total 97,440
 97,440

				Steady Rest	Damaged						
15	15	66.0	7,793					7,793	234	155	
15	15	66.0	6,872					6,872	205	138	
15	15	66.0	6,872	Taper Attachment Set	Missing	50	50	6,822	205	138	
15	15	66.0	7,293	Cooling Piping Taper Attachment Set	Damaged Missing	30 50	80	7,213	218	145	
15	15	66.0	7,293	Taper Attachment	Missing	50	50	7,243	218	145	
15	15	66.0	7,293	Cooling Piping Taper Attachment Set Steady Rest	Damaged Missing Damaged	30 50 40	120	7,173	218	145	
15	15	66.0	7,337	Cooling Piping Taper Attachment Set Center	Damaged Missing Missing	30 50 2	82	7,255	219	147	
			59,590						58,578	1,783	1,188
			52,576								
			242,752						237,100	7,233	
			235,730							7,227	4,817

A CODE NUMBER 32-31(A)
 B NAME OF PLANT AMANOKAWA PLANT HIRAKATA ARSENAL
 C LOCATION NO.29, OKA, HIRAKATA-SHI, OSAKA PREFECTURE
 D INDUSTRIAL GROUP MILITARY ARSENAL
 E SECTION OF EVALUATION INTEGRATED FACILITY
 F TYPE OF FACILITY MACHINE SHOP

1	2	3	4	5	6
Item No.	Bldg. No.	Inventory No.	Name-Type-Specifications Accessories & Spare parts	Weight (Kg)	Packing Size Length Width Height (cm)
			BROUGHT FORWARD	97,240 47,440	
111	1	171	Lathe Swing Over Bed 480mm. Swing Over Carriage 340mm. Engine Distance Between Centers 1450mm. Bed Length 2175mm. Feed Change System Quick Hand No. of Spindle Speeds 12 I.M.D. A.C. 7.5 H.P. 60 ~ 220V 1200 R.P.M.	2000	L 290 W 95 H 110
112	1	172	Lathe Swing O. B. 480mm. Swing O. C. 340mm. Engine Distance B. C. 1450mm. Bed L. 2175mm. Feed C. S. Quick Hand. No. of S.S. 12 I.M.D. A.C. 7.5 H.P. 60 ~ 220V 1200 R.P.M.	2000	L 290 W 95 H 110
113	1	173	Lathe Swing O. B. 670mm. Swing O. C. 440mm. Swing Over Gap 100mm. Engine Distance B.C. 2000mm. Bed L. 2800mm. Gap Feed C. S. Quick Hand. No. of S.S. 12 I.M.D. A.C. 10 H.P. 60 ~ 220V 1200 R.P.M.	3000	L 320 W 150 H 130
114	1	237	Lathe Swing O. B. 240mm. Swing O. C. 190mm. Bench Distance B.C. 300mm. Bed L. 1200mm. C.S.D. 2 Steps	250	L 106 W 45 H 65
115	1	274	Lathe Swing O. B. 320mm. Swing O.C. 210mm. Engine Distance B.C. 150mm. Bed L. 750mm. C.S.D. 3 Steps No. of S.S. 6	350	L 100 W 65 H 75
116	1	297	Lathe Swing O. B. 350mm. Swing O.C. 190mm. Turret Bed L. 1310mm. No. of S.S. 6 Ram Chucking Capacity 43mm. I.M.D. A.C. 2 H.P. 60 ~ 220V 1800 R.P.M.	900	L 180 W 60 H 30
117	1	299	Lathe Swing O. B. 330mm. Swing O.C. 192mm. Turret Bed L. 1300mm. No. of S.S. 6 Ram Chucking C. 43mm. I.M.D. A.C. 3 H.P. 60 ~ 220V 1700 R.P.M.	900	L 160 W 70 H 120
118	1	300	Lathe Swing O. B. 330mm. Swing O.C. 192mm. Turret Bed L. 1300mm. No. of S.S. 6 Ram Chucking C. 43mm.	900	L 160 W 70 H 120

A ARSENAL
REFECTURE

PLANT EVALUATION

ILITY

R E M O V A B L E

5	6	7	8	9	9A	10	11	12	13	14	15	
Weight (Kg)	Packing Size Length Width Height (cm)	Maker and Country	Year-Made-or Installed	DONT USE	Original Cost	Purchase Price of Removable Equipment	Conversion Factor	Purchase Price 1939 Yen	Life Expectancy	Future Life	Salvage Value	Depreciation Factor
97,440 97,440					395,110	376,329 371,329		464,468				
2000	L 290 W 95 H 110	SIDNI U.S.A.	1938		12,185	11,605	95.8	11,117	25	15	15	66.0
2000	L 290 W 95 H 110	SIDNI U.S.A.	1938		12,185	11,605	95.8	11,117	25	15	15	66.0
3000	L 320 W 150 H 130	YAMATO JAPAN	1941		9,975	9,500	89.8	9,436	25	18	15	76.2
250	L 106 W 45 H 65	WAKAYAMA JAPAN	1937		970	924	97.5	900	25	14	15	62.6
350	L 100 W 65 H 75	OSAKA HO -HEIKOSHOU JAPAN	1914		525	500	347.5	1,737	25	0	15	15.0
900	L 180 W 60 H 30	KIKUGAWA JAPAN	1933		1,359	1,295	144.9	1,376	25	10	15	49.0
900	L 160 W 70 H 120	KYOTOKOSA -KU JAPAN	1942		4,357	4,150	81.5	3,382	25	19	15	79.6
900	L 160 W 70 H 120	KYOTOKOSA -KU JAPAN	1942		4,357	4,150	81.5	3,382	25	19	15	79.6

SHEET 12 OF 68 SHEETS

DATE 11 JULY 1948

13 Vintage Life	14 Salvage Value	15 Depreciation Factor	16 Depreciated Value	17 Other Deductions	18 Reason-For Other Deductions	19 Deduction Yen	20 Total Extra Deduction Yen	21 Total Depreciated Value	NON-REMOVABLE	
									22 Non- Removable Equipment	23 Non- Removable Value
			242,952 235,738					237,100	7,233 7,233	4,817
15	15	66.0	7,337					7,337	219	147
15	15	66.0	7,337	Cooling Piping Taper Attachment Set Center 2 Tail Stock Duff Tail Stock Fixture	Broken Missing Missing Missing Missing	30 50 2 1 5	82	7,255	219	147
18	15	76.2	6,428					6,422	192	128
14	15	62.6	563	Y Belt Small Parts	Missing Missing	6 10	16	547	16	11
0	15	15.0	260	Tail Stock Carriage Chuck	Missing Missing Missing	(39) (52) (15)	(106)	260	7	5
10	15	49.0	919	Carriage Chuck Gear Box Small Parts Bar Feed Mechanism	Missing Missing Missing Missing Damaged	90 25 5 15 45	135	784	27	18
5	19	79.6	2,692	Tool Post Gear Box Weight Small Parts Bar Feed Mechanism	Missing Missing Missing Missing Damaged	40 3 6 11 45	105	2,587	80	53
5	19	79.6	2,692	Chuck Tool Post	Missing Missing	40 20	136	2,556	80	53

			Gap Feed C. S. Quick Hand No. of S.S. 12		H	130	
			I.M.D. A.C. 10HP 60~220V 1200 R.P.M.				
114	1	237	Lathe Swing O. B. 240mm Swing O. C. 190mm.	250	L	106	WA
			Bench Distance B.C. 300mm. Bed L. 1200mm.		W	45	JA
			C.S.D. 2 Steps		H	65	
115	1	274	Lathe Swing O. B. 320mm Swing O. C. 210mm.	350	L	100	OSA
			Engine Distance B.C. 150mm. Bed L. 750mm.		W	65	HEI
			C.S.D. 3 Steps		H	75	JA
			No. of S.S. 6				
116	1	297	Lathe Swing O. B. 350mm. Swing O. C. 190mm.	900	L	180	KIKU
			Turret Bed L. 1310mm. No. of S.S. 6		W	60	JA
			Ram Chucking Capacity 43mm.		H	30	
			I.M.D. A.C. 2HP 60~220V 1800 R.P.M.				
117	1	299	Lathe Swing O. B. 330mm. Swing O. C. 192mm.	900	L	160	KYOT
			Turret Bed L. 1300mm. No. of S.S. 6		W	70	KU
			Ram Chucking C. 43mm.		H	120	JA
			I.M.D. A.C. 3HP 60~220V 1700 R.P.M.				
118	1	300	Lathe Swing O. B. 330mm. Swing O. C. 192mm.	900	L	160	KYOT
			Turret Bed L. 1300mm. No. of S.S. 6		W	70	KU
			Ram Chucking C. 43mm.		H	120	JA
			I.M.D. A.C. 3HP 60~220V 1700 R.P.M.				
119	1	301	Lathe Swing O. B. 330mm. Swing O. C. 192mm.	900	L	160	KYO
			Turret Bed L. 1300mm. No. of S.S. 6		W	70	KU
			Ram Chucking C. 43mm.		H	120	JA
			I.M.D. A.C. 3HP 60~220V 1700 R.P.M.				
120	1	302	Lathe Swing O. B. 190mm. Swing O. C. 120mm.	800	L	150	TO
			Turret Bed L. 1020mm. No. of S.S. 8		W	80	JAP
			Ram Chucking C. 34mm.		H	130	
			I.M.D. A.C. 3HP 60~220V 750 R.P.M.				

NOTES : NO Dittos Allowed in Spaces
 Crossline All Spaces Not Used (As Shown Above)

Page Total 12960
 Cumulative Total 8450
 112300
 105450

250	H 130 L 106 W 45 H 65	WAKAYAMA - JAPAN 1937	ⓔ	970	924	975	900	25	14	15	62.6
350	L 100 W 65 H 75	OSAKA HO - HEIKOSHO 1914 JAPAN	ⓔ	525	500	347.5	1,737	25	0	15	15.0
900	L 180 W 60 H 30	KIKUGAWA - JAPAN 1933	ⓔ	1,359	1,295	144.9	1,876	25	10	15	49.0
900	L 160 W 70 H 120	KYOTOKOSA - KU 1942 JAPAN	ⓔ	4,357	4,150	81.5	3,382	25	19	15	79.6
900	L 160 W 70 H 120	KYOTOKOSA - KU 1942 JAPAN	ⓔ	4,357	4,150	81.5	3,382	25	19	15	79.6
900	L 160 W 70 H 120	KYOTOKOSA - KU 1942 JAPAN	ⓔ	4,357	4,150	81.5	3,382	25	19	15	79.6
800	L 150 W 80 H 130	TōA - JAPAN 1942	ⓔ	7,932	7,555	81.5	6,157	25	19	15	79.6
12900 8050 110,340 45,460				50,202	55,234 55,834		51,486				
				453,312	431,763 426,763		515,954				
					431,763						

5	14	15	62.6	563	V Belt Small Parts	Missing Missing	6 10	16	547	16	11
5	0	15	15.0	260	Tail Stock Carriage Chuck	Missing Missing Missing	(39) (52) (15)	(106)	260	7	5
5	10	15	49.0	919	Carriage Chuck Gear Box Small Parts	Missing Missing Missing Missing	90 25 5 15	135	784	27	18
5	19	15	79.6	2,692	Bar Feed Mechanism Tool Post Gear Box Weight Small Parts	Damaged Missing Missing Missing Missing	45 40 3 6 11	105	2,597	80	53
5	19	15	79.6	2,692	Bar Feed Mechanism Chuck Tool Post Gear Box Small Parts	Damaged Missing Missing Missing Missing	45 40 20 3 28	136	2,556	80	53
5	19	15	79.6	2,692	Gear Box Tool Slide Tool Post Feed Mechanism Weight Small Parts	Missing Missing Missing Damaged Missing Missing	13 10 20 45 6 9	93	2,599	80	53
5	19	15	79.6	4,900	Lead Screw Stud Sleeve Gear Box Chuck Head Small Parts	Missing Missing Missing Missing Missing Missing	4 2 3 40 30 10	89	4,811	146	98
				35,820					35,158	1,066	713
				278,572					8,294		
				291,558					272,258	8,294	5,530

A CODE NUMBER 32 - 31(A)
 B NAME OF PLANT AMANOKAWA PLANT HIRAKATA ARSENAL
 C LOCATION NO 29, OKA, HIRAKATA-SHI, OSAKA PREFECTURE
 D INDUSTRIAL GROUP MILITARY ARSENAL
 E SECTION OF EVALUATION INTEGRATED FACILITY
 F TYPE OF FACILITY MACHINE SHOP

1	2	3	4	5	6	
Item No.	Bldg. No.	Inventor. No.	Name-Type-Specifications Accessories & Spare parts	Weight (Kg)	Packing Size Length Width Height (cm)	
			BROUGHT FORWARD	110,340 ##,##0		
121	1	308	Lathe Swing over Bed 370 mm Swing over Carriage 200 mm Turret Bed Length 1,300 mm No. of Spindle Speeds 6 Ram Chucking Capacity 40 mm I.M.D. A.C. 2HP 60 or 220V 1700 R.P.M.	950	L 180 W 70 H 140	SAN JAP
122	1	321	Lathe Swing O.B. 360 mm Swing O.C. 200 mm Turret Bed L. 1,300 mm No. of S.S. 3 Ram Chucking C. 40 mm C.S.D. 3 steps	700	L 170 W 60 H 120	EMI -AN FR
123	1	324	Lathe Swing O.B. 360 mm Swing O.C. 200 mm Turret Bed L. 1,300 mm Ram Chucking C. 40 mm C.S.D. 3 steps No. of S.S. 3	700	L 170 W 60 H 120	EMI -AN FR
124	1	326	Lathe Swing O.B. 360 mm Swing O.C. 200 mm Turret Bed L. 1,300 mm Ram Chucking C. 40 mm C.S.D. 3 steps No. of S.S. 3	700	L 170 W 60 H 120	EMI -AN FR
125	1	327	Lathe Swing O.B. 360 mm Swing O.C. 200 mm Turret Bed L. 1,300 mm Ram chucking C. 40 mm C.S.D. 3 steps No. of S.S. 3	700	L 170 W 60 H 120	EMI -NA FR
126	1	329	Lathe Swing O.B. 360 mm Swing O.C. 200 mm Turret Bed L. 1,300 mm Ram Chucking C. 40 mm C.S.D. 3 steps No. of S.S. 3	700	L 170 W 60 H 120	EMI NA FR
127	1	331	Lathe Swing O.B. 360 mm Swing O.C. 200 mm Turret Bed L. 1,300 mm	700	L 170 W 60	EMI -NA

ATA ARSENAL
PREFECTURE

PLANT EVALUATION

ACILITY

R E M O V A B L E

5	6	7	8	9	9A	10	11	12	13	14	15	
Weight (Kg)	Packing Size Length Width Height (cm)	Maker and Country	Year Made-of Installed	DONT USE	Original Cost	Purchase Price of Removable Equipment	Conversion Factor	Purchase Price 1989 Yen	Life Expectancy	Future Life	Salvage Value	Depreciation Factor
110,300 113,400					453,721	431,763 421,763		515,954				
950	L 180 W 70 H 140	SANSHO JAPAN	1933		⑤ 1,391	1,325	1442.9	1,919	25	10	15	49.0
700	L 170 W 60 H 120	EMIL SHU -ANARD FRANCE	1911		⑤ 1,911	1,820	356.9	6,495	25	10	15	15.0
700	L 170 W 60 H 120	EMIL SHU -ANARD FRANCE	1911		⑤ 1,911	1,820	356.9	6,495	25	0	15	15.0
700	L 170 W 60 H 120	EMIL SHU -ANARD FRANCE	1911		⑤ 1,911	1,820	356.9	6,495	25	0	15	15.0
700	L 170 W 60 H 120	EMIL SHUA -NARD FRANCE	1911		⑤ 1,911	1,820	356.9	6,495	25	0	15	15.0
700	L 170 W 60 H 120	EMIL SHUA NARD FRANCE	1911		⑤ 1,911	1,820	356.9	6,495	25	0	15	15.0
700	L 170 W 60 H 120	EMIL SHUA -NARD FRANCE	1911		⑤ 1,911	1,820	356.9	6,495	25	0	15	15.0

SHEET 13 OF 68 SHEETS

DATE 11 JULY 1948

											NON-REMOVABLE	
13	14	15	16	17	18	19	20	21	22	23		
Future Life	Salvage Value	Depreciation Factor	Depreciated Value	Other Deductions	Reason For Other Deductions	Deduction Yen	Total Extra Deduction Yen	Total Depreciated Value	Non-Removable Equipment	Non-Removable Value		
			278,572 271,558					272,258	3,299 3,295	5,530		
10	15	49.0	940	Collet Chuck	Missing	15	00	900	28	18		
				Oil pump	Missing	10						
				Weight	Missing	5						
				Small parts	Missing	10						
10	15	15.0	974	Weight	Missing	(5)		974	29	19		
				Bar Feed Mech.	Damaged	(6)	(21)					
				Small parts	Missing	(10)						
5	0	15	15.0	Bar Feed Mech.	Damaged	(6)		974	29	19		
				Weight	Missing	(5)	(21)					
				Small parts	Missing	(10)						
5	0	15	15.0	Bar Feed Mech.	Damaged	(6)		974	29	19		
				Weight	Missing	(5)	(21)					
				Small parts	Missing	(10)						
5	0	15	15.0	Tool post	Missing	(8)		974	29	19		
				Weight	Missing	(5)	(29)					
				Bar Feed Mech.	Damaged	(6)						
				Small parts	Missing	(10)						
25	0	15	15.0	Bar Feed Mech.	Damaged	(6)		974	29	19		
				Small parts	Missing	(10)	(16)					
25	0	15	15.0	Small parts	Missing	(10)	(10)	974	29	19		

124	1	326	Lathe Turret Ram C.S.D.	Swing O.B. 360mm Bed L. 1300mm Chucking C. 40mm 3steps No. of S.S. 3	700	L 170 W 60 H 120	EMIL -ANA FRA
125	1	327	Lathe Turret Ram C.S.D.	Swing O.B. 360mm Bed L. 1300mm Chucking C. 40mm 3steps No. of S.S. 3	700	L 170 W 60 H 120	EMIL -NAF FRA
126	1	329	Lathe Turret Ram C.S.D.	Swing O.B. 360mm Bed L. 1300mm Chucking C. 40mm 3steps No. of S.S. 3	700	L 170 W 60 H 120	EMIL NAF FRA
127	1	331	Lathe Turret Ram C.S.D.	Swing O.B. 360mm Bed L. 1300mm Chucking C. 40mm 3steps No. of S.S. 3	700	L 170 W 60 H 120	EMIL -NAF FRA
128	1	336	Lathe Turret Ram C.S.D.	Swing O.B. 380mm Bed L. 1350mm Chucking C. 20mm 3steps No. of S.S. 3	900	L 180 W 70 H 120	SAE GER
129	1	339	Lathe Turret Ram C.S.D.	Swing O.B. 350mm Bed L. 1350mm Chucking C. 38mm 3steps No. of S.S. 3	700	L 180 W 60 H 130	GOP U.S.
130	1	348	Lathe Turret Ram C.S.D.	Swing O.B. 350mm Bed L. 1350mm Chucking C. 38mm 3steps No. of S.S. 3	700	L 180 W 60 H 130	GOP U.S.

NOTES : NO Dittos Allowed in Spaces

Crossline All Spaces Not Used (As Shown Above)

Page-Total

Cumulative-Total

7450
117,790
~~112,910~~

700	L 170 W 60 H 120	EMIL SHU -NARD 1911 FRANCE	(E) 1,911	1,820	356.9	6,495	25	0	15	15.0	
700	L 170 W 60 H 120	EMIL SHUA -NARD 1911 FRANCE	(E) 1,911	1,820	356.9	6,495	25	0	15	15.0	9
700	L 170 W 60 H 120	EMIL SHUA NARD 1911 FRANCE	(E) 1,911	1,820	356.9	6,495	25	0	15	15.0	9
700	L 170 W 60 H 120	EMIL SHUA -NARD 1911 FRANCE	(E) 1,911	1,820	356.9	6,495	25	0	15	15.0	9
900	L 180 W 70 H 120	SAECHS GERMANY 1906	(E) 1,176	1,120	401.4	4,495	25	0	15	15.0	6
700	L 180 W 60 H 130	GORVIN U.S.A. 1907	(E) 1,694	1,614	370.6	5,981	25	0	15	15.0	8
700	L 180 W 60 H 130	GORVIN U.S.A. 1907	(E) 1,694	1,614	370.6	5,981	25	0	15	15.0	8
7,450			17,421	16,593		57,346					925
7,790			470,733	448,756		573,800					287
2,910				448,356							280

				Small parts	MISSING	(10)			
0	15	15.0	974	Bed Feed Mech	Damaged	(6)			
				Weight	MISSING	(5)	(21)	974	29
				Smallparts	MISSING	(10)			19
0	15	15.0	974	Tool post	MISSING	(8)			
				Weight	MISSING	(5)	(29)	974	29
				Bar Feed Mech	Damaged	(6)			
				Smallparts	MISSING	(10)			
0	15	15.0	974	Bar Feed Mech	Damaged	(6)			
				Smallparts	MISSING	(10)	(16)	974	29
									19
0	15	15.0	974	Smallparts	MISSING	(10)	(10)	974	29
									19
0	15	15.0	674	Bell chuck	MISSING	(15)			
				Tool Sliding	MISSING	(10)	(40)	674	30
				Weight	MISSING	(5)			13
				Small parts	MISSING	(10)			
0	15	15.0	897	Smallparts	MISSING	(10)	(10)	897	27
									17
0	15	15.0	897	Smallparts	MISSING	(10)	(10)	897	27
									17
			9252					9212	276
			287,824					281,470	2,575
			280,870						5,709