



QUA 6204

HARVARD UNIVERSITY



LIBRARY

OF THE

MUSEUM OF COMPARATIVE ZOOLOGY

---









New Series, No. 145 (Vol. 37, Part 1).

Price 10s.

7527

NOVEMBER, 1894.

THE  
QUARTERLY JOURNAL  
OF  
MICROSCOPICAL SCIENCE.

EDITED BY

E. RAY LANKESTER, M.A., LL.D., F.R.S.,

*Linacre Professor of Comparative Anatomy, Fellow of Merton College, and Honorary  
Fellow of Exeter College, Oxford.*

WITH THE CO-OPERATION OF

ADAM SEDGWICK, M.A., F.R.S.,

*Fellow and Lecturer of Trinity College, Cambridge;*

AND

W. F. R. WELDON, M.A., F.R.S.,

*Jodrell Professor of Zoology and Comparative Anatomy in University College, London;  
Fellow of St. John's College, Cambridge.*

WITH LITHOGRAPHIC PLATES AND ENGRAVINGS ON WOOD.



LONDON:

J. & A. CHURCHILL, 11, NEW BURLINGTON STREET.

1894.

ag. 9

## CONTENTS OF No. 145.—New Series.

### MEMOIRS:

	PAGE
On <i>Julinia</i> ; a New Genus of Compound Ascidians from the Antarctic Ocean. By W. T. CALMAN, University College, Dundee. (With Plates 1—3) . . . . .	1
Hermaphroditism in Mollusca. By Dr. PAUL PELSENEER (Ghent). (With Plates 4—6) . . . . .	19
A Description of the Cerebral Convolutions of the Chimpanzee known as "Sally;" with Notes on the Convolutions of other Chimpanzees and of two Orangs. By W. BLAXLAND BENHAM, D.Sc.Lond., Hon. M.A.Oxon., Aldrichian Demonstrator of Comparative Anatomy in the University of Oxford; Lecturer on Biology at Bedford College, London. (With Plates 7—11) . . . . .	47
On the Inadequacy of the Cellular Theory of Development, and on the Early Development of Nerves, particularly of the Third Nerve and of the Sympathetic in Elasmobranchii. By ADAM SEDGWICK, F.R.S.	87
On <i>Benhamia cœcifera</i> , n. sp., from the Gold Coast. By W. BLAXLAND BENHAM, D.Sc.Lond., Hon. M.A.Oxon., Aldrichian Demonstrator in Comparative Anatomy in the University of Oxford, &c. (With Plate 12) . . . . .	103

197  
4-4



3AN 81 1895

New Series, No. 146 (Vol. 37, Part 2).

Price 10s.

7527

DECEMBER, 1894.

THE  
 QUARTERLY JOURNAL  
 OF  
 MICROSCOPICAL SCIENCE.

EDITED BY

E. RAY LANKESTER, M.A., LL.D., F.R.S.,  
*Linacre Professor of Comparative Anatomy, Fellow of Merton College, and Honorary  
 Fellow of Exeter College, Oxford.*

WITH THE CO-OPERATION OF

ADAM SEDGWICK, M.A., F.R.S.,  
*Fellow and Lecturer of Trinity College, Cambridge;*

AND

W. F. R. WELDON, M.A., F.R.S.,  
*Jodrell Professor of Zoology and Comparative Anatomy in University College, London;  
 Fellow of St. John's College, Cambridge.*

WITH LITHOGRAPHIC PLATES AND ENGRAVINGS ON WOOD.



LONDON:

J. & A. CHURCHILL, 11, NEW BURLINGTON STREET.  
 1894.

**CONTENTS OF No. 146.—New Series.**

---

**MEMOIRS:**

	PAGE
A Re-investigation into the Early Stages of the Development of the Rabbit. By RICHARD ASSHETON, M.A. (With Plates 13—17) .	113
On the Phenomenon of the Fusion of the Epiblastic Layers in the Rabbit and in the Frog. By RICHARD ASSHETON, M.A. (With Plate 18) . . . . .	165
On the Causes which lead to the Attachment of the Mammalian Embryo to the Walls of the Uterus. By RICHARD ASSHETON, M.A. (With Plate 19) . . . . .	173
The Primitive Streak of the Rabbit; the Causes which may determine its Shape, and the Part of the Embryo formed by its Activity. By RICHARD ASSHETON, M.A. (With Plates 20—22) . . . . .	191
On the Growth in Length of the Frog Embryo. By RICHARD ASSHETON, M.A. (With Plates 23 and 24) . . . . .	223

7527  
New Series, No. 147 (Vol. 37, Part 3).

2/5.3  
Price 10s.

MARCH, 1895.

THE  
QUARTERLY JOURNAL  
OF  
MICROSCOPICAL SCIENCE.

EDITED BY

E. RAY LANKESTER, M.A., LL.D., F.R.S.,

*Linacre Professor of Comparative Anatomy, Fellow of Merton College, and Honorary  
Fellow of Exeter College, Oxford.*

WITH THE CO-OPERATION OF

ADAM SEDGWICK, M.A., F.R.S.,

*Fellow and Lecturer of Trinity College, Cambridge;*

AND

W. F. R. WELDON, M.A., F.R.S.,

*Jodrell Professor of Zoology and Comparative Anatomy in University College, London;  
Fellow of St. John's College, Cambridge.*

WITH LITHOGRAPHIC PLATES AND ENGRAVINGS ON WOOD.



LONDON :

J. & A. CHURCHILL, 11, NEW BURLINGTON STREET.

1895.

CONTENTS OF No. 147.—New Series.

---

MEMOIRS:

	PAGE
On the Variation of the Tentaculocysts of <i>Aurelia aurita</i> . By EDWARD T. BROWNE, B.A., University College, London. (With Plate 25) . . . . .	245
On the Structure of <i>Vermiculus pilosus</i> . By E. S. GOODRICH, F.L.S., Assistant to the Linacre Professor, Oxford. (With Plates 26—28) . . . . .	253
On the Mouth-parts of the Cypris-stage of <i>Balanus</i> . By THEO. T. GROOM, F.Z.S., late Scholar of St. John's College, Cambridge. (With Plate 29) . . . . .	269
A Study of <i>Coccidia</i> met with in Mice. By J. JACKSON CLARKE, M.B. Lond. (With Plate 30) . . . . .	277
Observations on Various Sporozoa. By J. JACKSON CLARKE, M.B. Lond. (With Plates 31—33) . . . . .	287
A Revision of the Genera and Species of the Branchiostomidæ. By J. W. KIRKALDY. (With Plates 34 and 35) . . . . .	303
Sedgwick's Theory of the Embryonic Phase of Ontogeny as an Aid to Phylogenetic Theory. By E. W. MACBRIDE, B.A., Fellow of St. John's College, Cambridge; Demonstrator in Animal Morphology to the University of Cambridge . . . . .	325

JUL 23 1855

202, 3

New Series, No. 148 (Vol. 37, Part 4).

Price 10s.

7527

JUNE, 1895.

THE  
 QUARTERLY JOURNAL  
 OF  
 MICROSCOPICAL SCIENCE.

EDITED BY

E. RAY LANKESTER, M.A., LL.D., F.R.S.,  
*Linacre Professor of Comparative Anatomy, Fellow of Merton College, and Honorary  
 Fellow of Exeter College, Oxford.*

WITH THE CO-OPERATION OF

ADAM SEDGWICK, M.A., F.R.S.,  
*Fellow and Lecturer of Trinity College, Cambridge;*

AND

W. F. R. WELDON, M.A., F.R.S.,  
*Jodrell Professor of Zoology and Comparative Anatomy in University College, London;  
 Fellow of St. John's College, Cambridge.*

WITH LITHOGRAPHIC PLATES AND ENGRAVINGS ON WOOD.



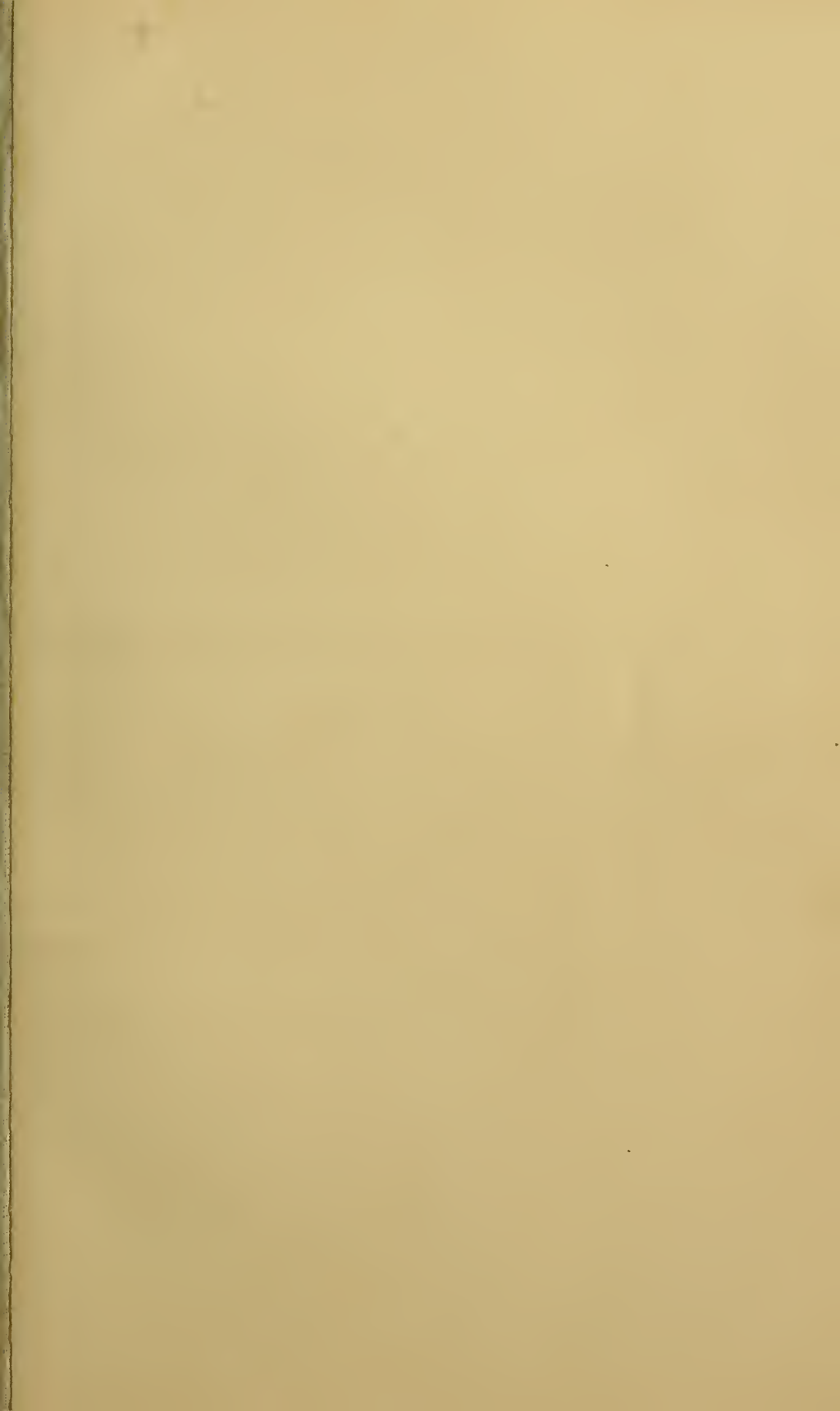
LONDON:  
 J. & A. CHURCHILL, 11, NEW BURLINGTON STREET.  
 1895.

CONTENTS OF No. 148.—New Series.

---

MEMOIRS:

	PAGE
The Anatomy of <i>Alcyonium digitatum</i> . By SYDNEY J. HICKSON, M.A., D.Sc., Beyer Professor of Zoology in the Owens College, Manchester; Fellow of Downing College, Cambridge. (With Plates 36—39) . . . . .	343
Note on the Chemical Constitution of the Mesogloea of <i>Alcyonium digitatum</i> . By W. LANGDON BROWN, B.A., late Hutchinson Research Student, St. John's College, Cambridge . . . . .	389
A Study of Metamerism. By T. H. MORGAN, Ph.D., Associate Professor of Biology, Bryn Mawr College, U.S.A. (With Plates 40—43) . . . . .	395
On the Cœlom, Genital Ducts, and Nephridia. By EDWIN S. GOODRICH, F.L.S., Assistant to the Linacre Professor of Comparative Anatomy, Oxford. (With Plates 44 and 45). . . . .	477









Figs 1 & 2 L.B. 3-11 W.T.C. ad rat. dd.













Fig. 26.



Fig. 27.

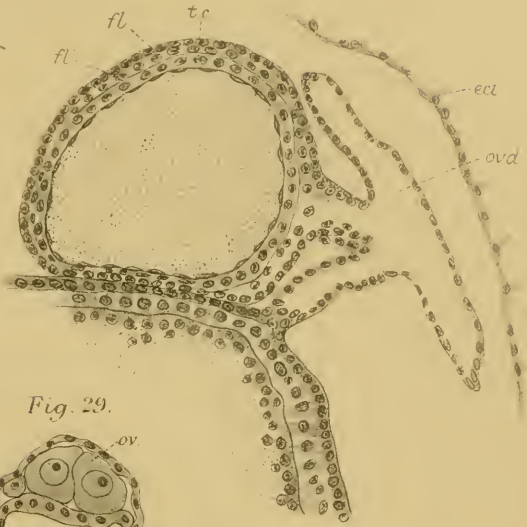


Fig. 29.



Fig. 30.

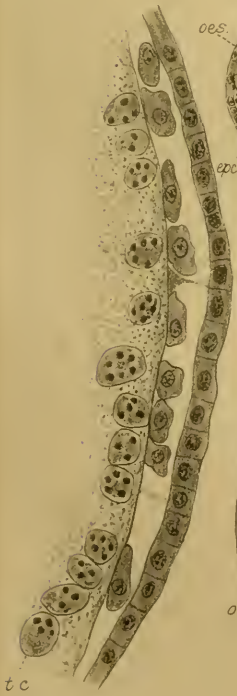


Fig. 28.

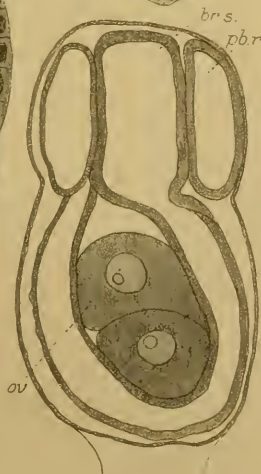


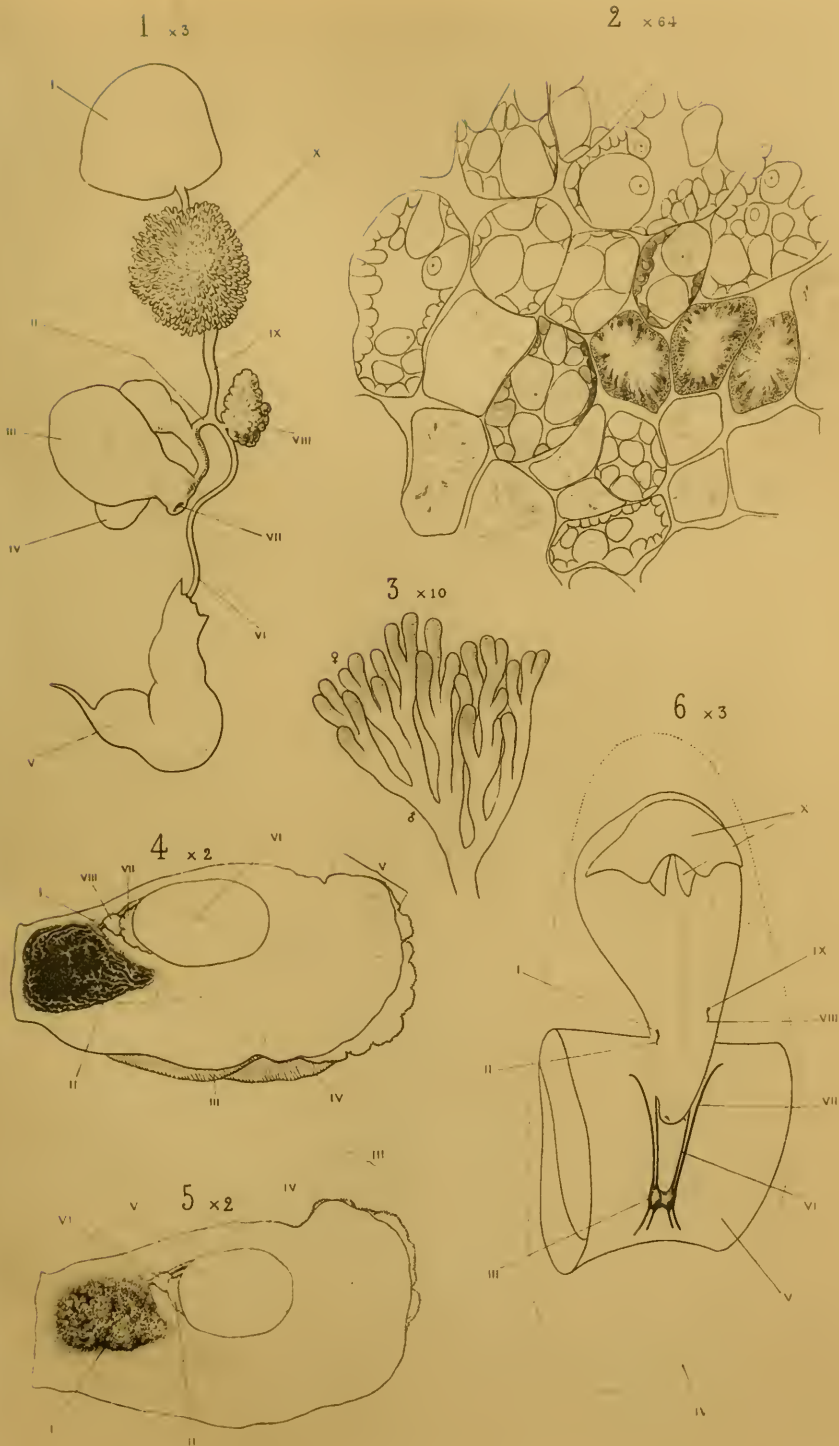
Fig. 31.



Fig. 32.









7 x 16



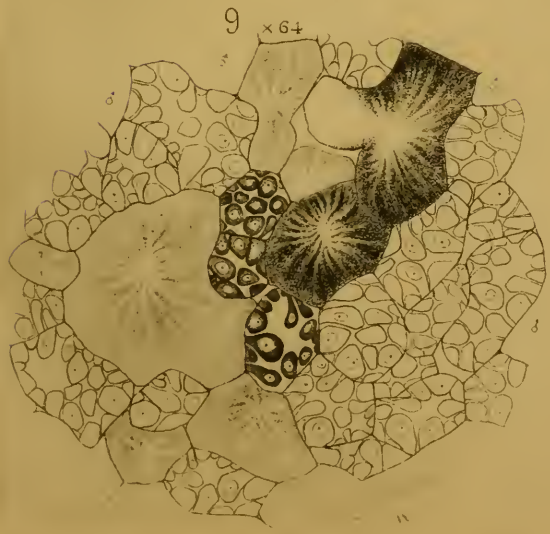
8 x 16



10 x 15



9 x 64





11 x 85



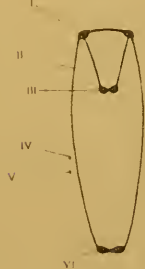
12 x 9



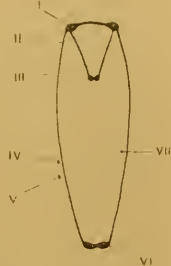
15 x 20



13



14



16 x 20



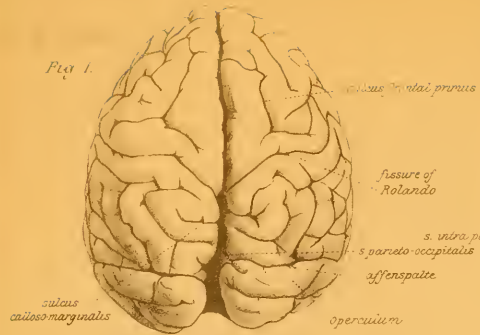








Fig. 1.



CHIMPANZEE (Oxford Museum)

Fig. 2.

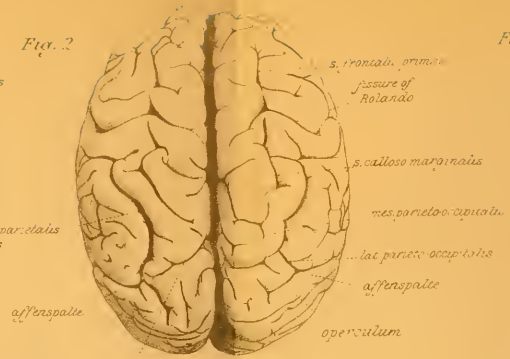
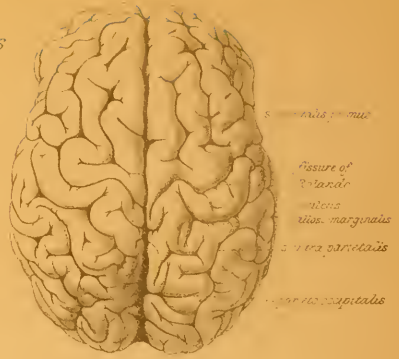


Fig. 3.



HOTTENTOT.

Fig. 8.



Fig. 4.



Fig. 9.



Fig. 5.

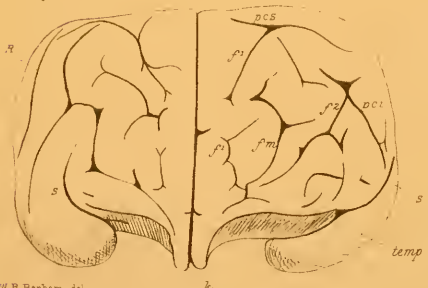


Fig. 6.

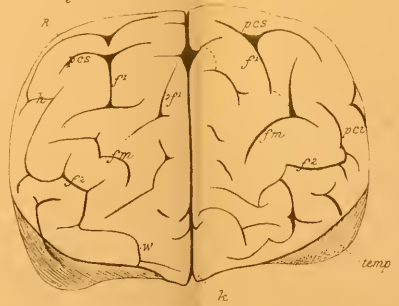


Fig. 7.

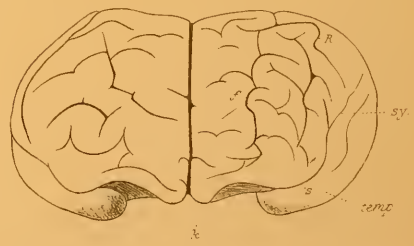


















Fig. 19.

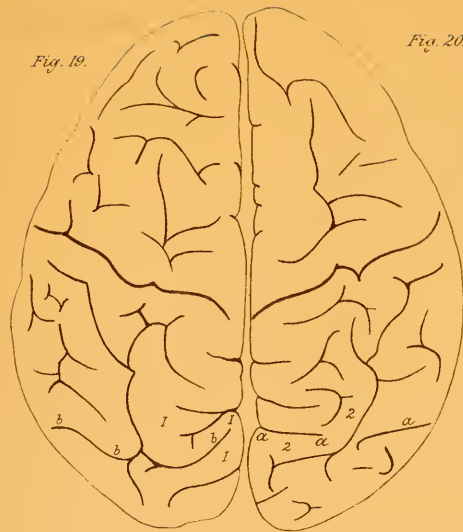


Fig. 20.



Fig. 21.

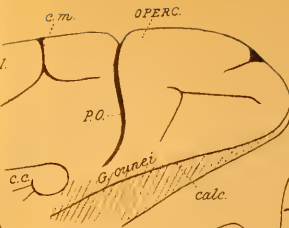


Fig. 25.

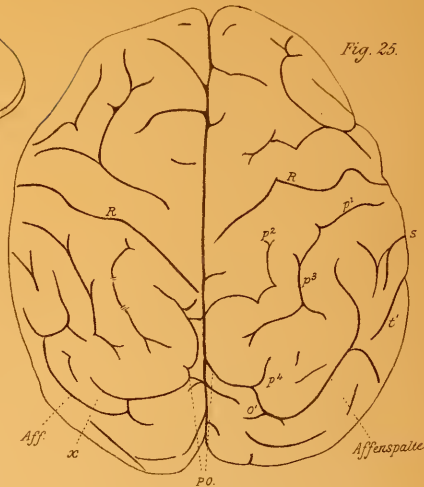


Fig. 22.



Fig. 26.

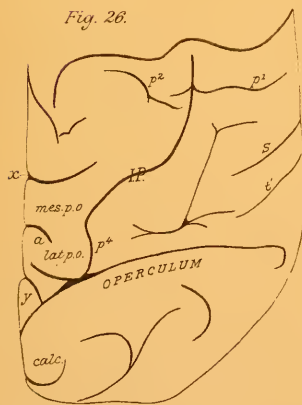


Fig. 28.

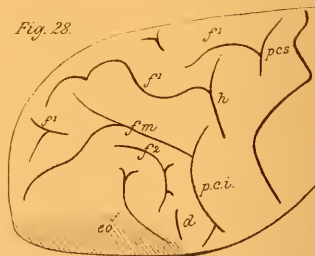


Fig. 27.

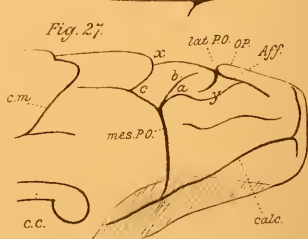


Fig. 23.

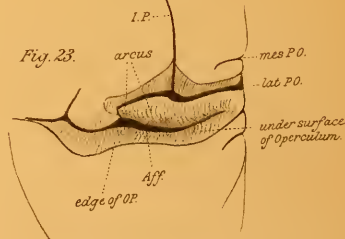


Fig. 29.

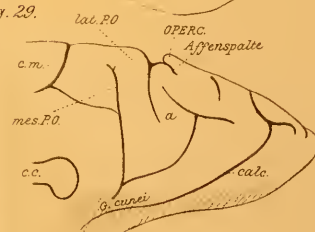
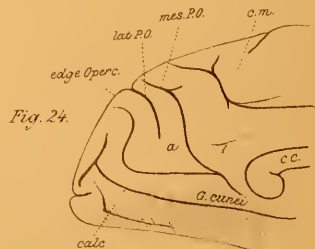


Fig. 24.









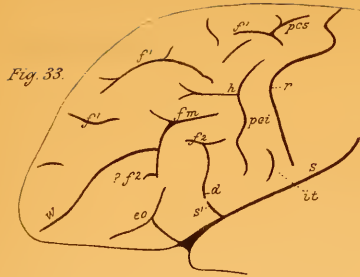


Fig. 33.

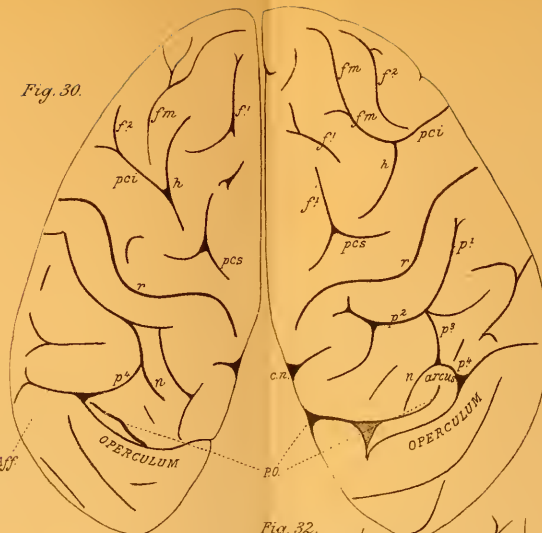


Fig. 30.



Fig. 34.

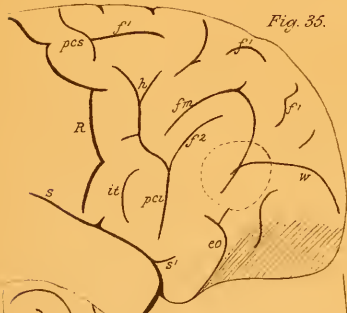


Fig. 35.

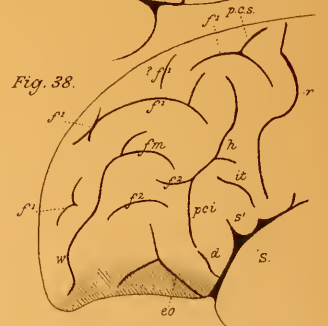


Fig. 38.

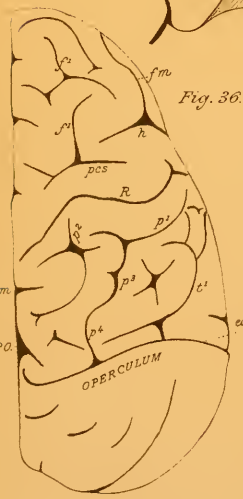


Fig. 36.

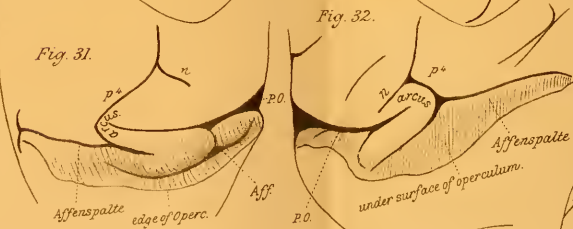


Fig. 31.

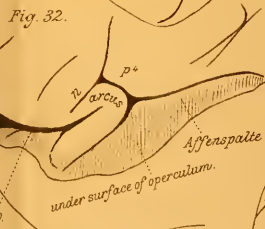


Fig. 32.

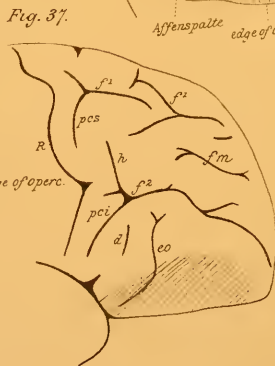


Fig. 37.

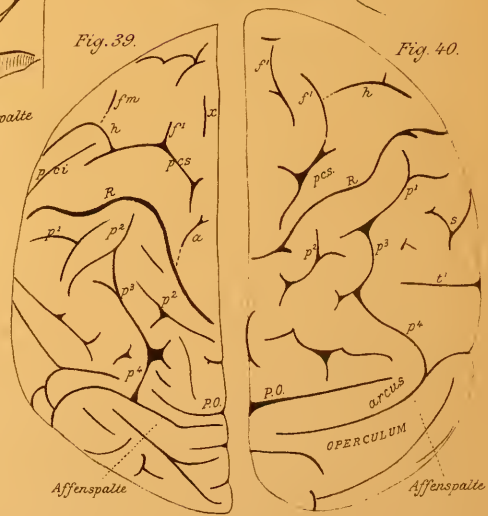


Fig. 39.

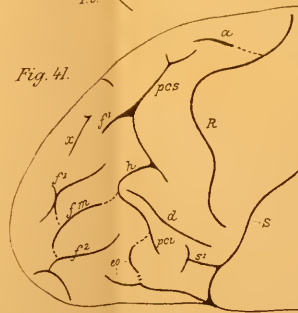


Fig. 41.

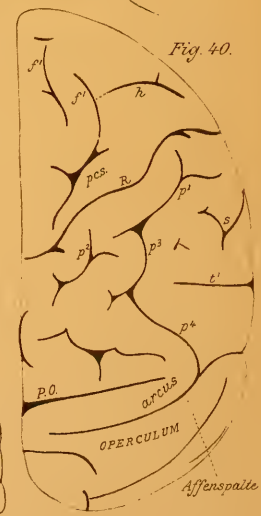


Fig. 40.



Fig. 42.

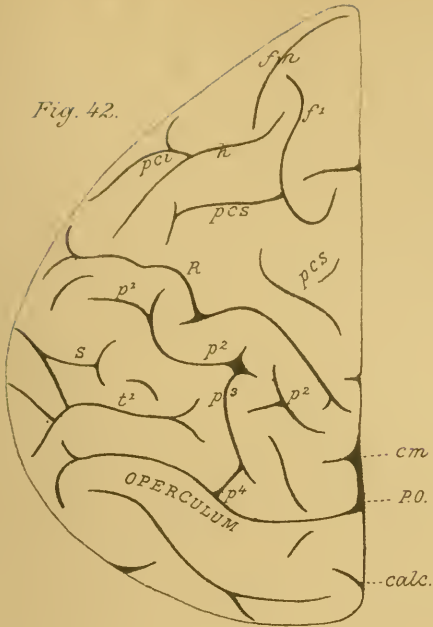


Fig. 43.

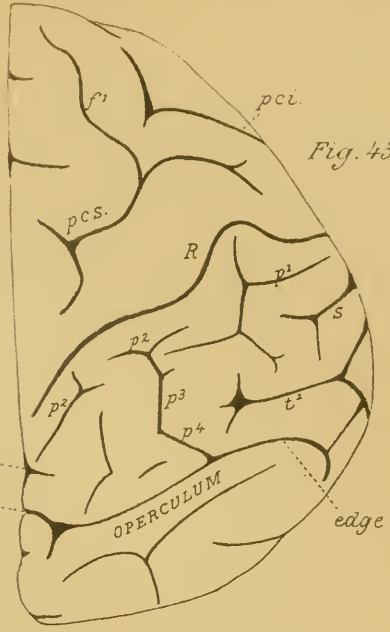


Fig. 44.

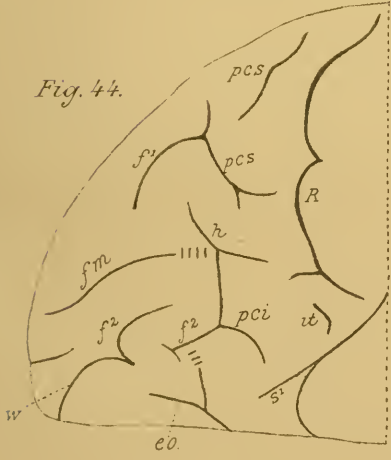


Fig. 45.

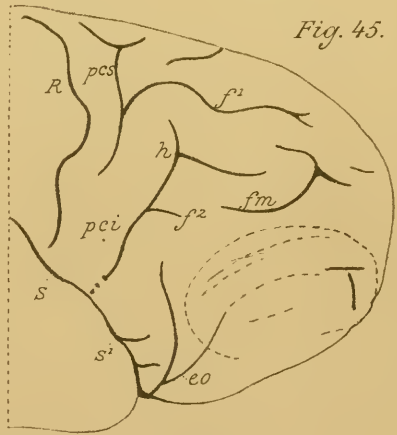


Fig. 46.







Fig. 1.

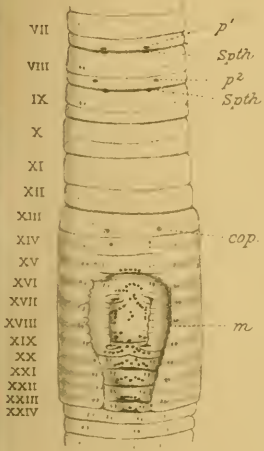


Fig. 2.

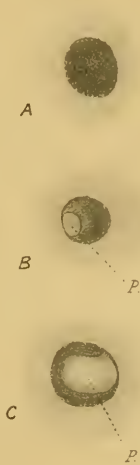


Fig. 6.



Fig. 3.

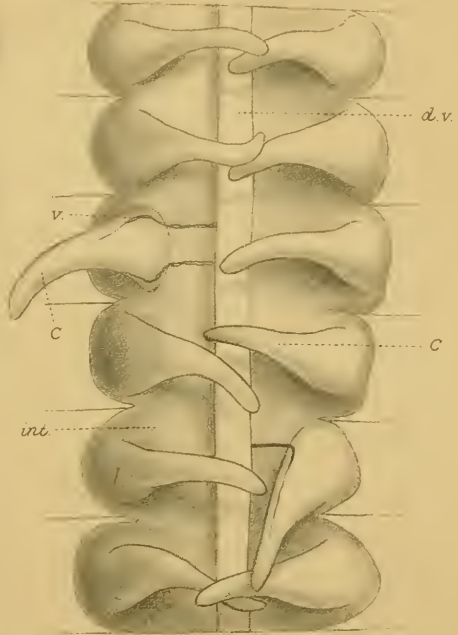


Fig. 4.

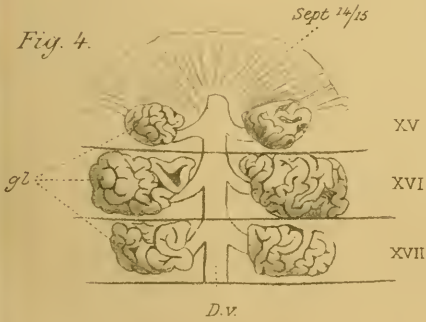


Fig. 9.

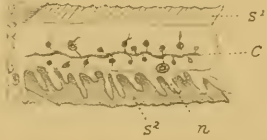


Fig. 7.

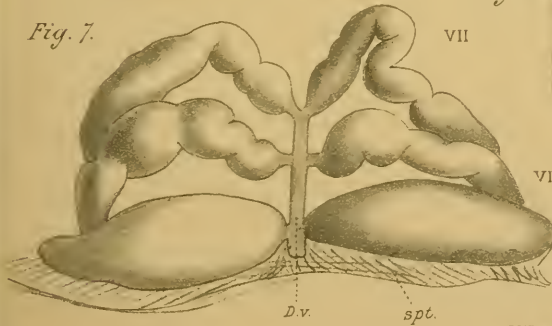


Fig. 5.

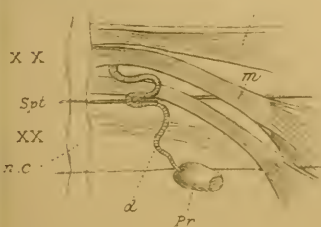
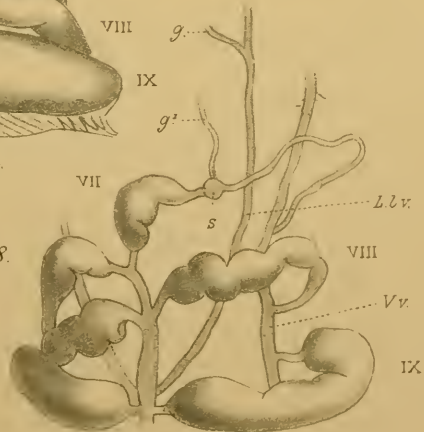


Fig. 8.









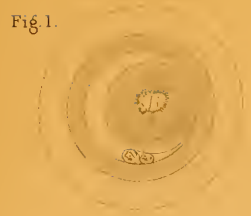


Fig. 1.

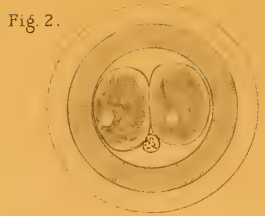


Fig. 2.

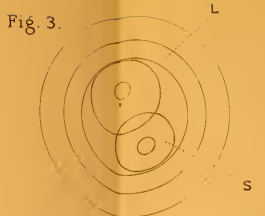


Fig. 3.

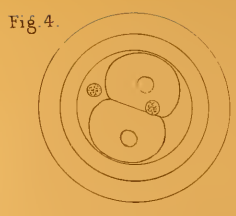


Fig. 4.

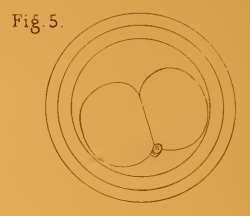


Fig. 5.

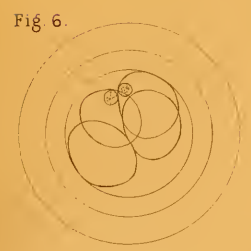


Fig. 6.

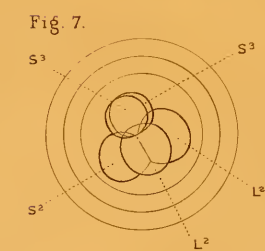


Fig. 7.

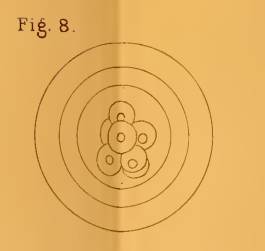


Fig. 8.



Fig. 9.

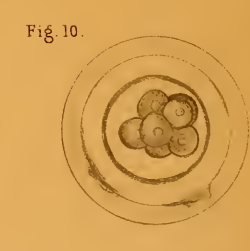


Fig. 10.

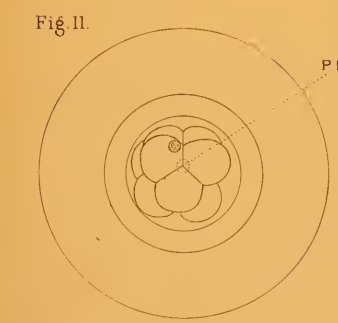


Fig. 11.

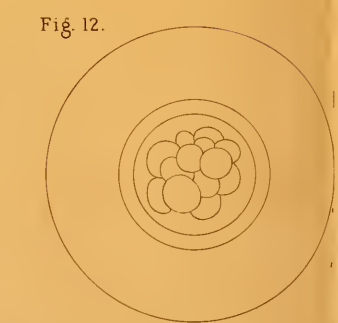


Fig. 12.



Fig. 13.

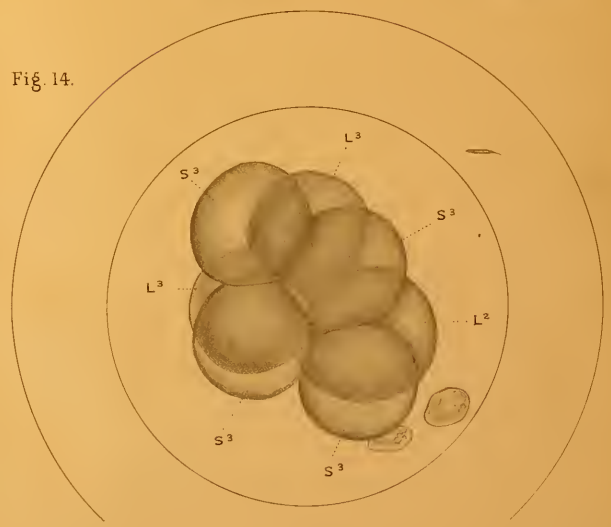


Fig. 14.









Fig. 15.

ALB

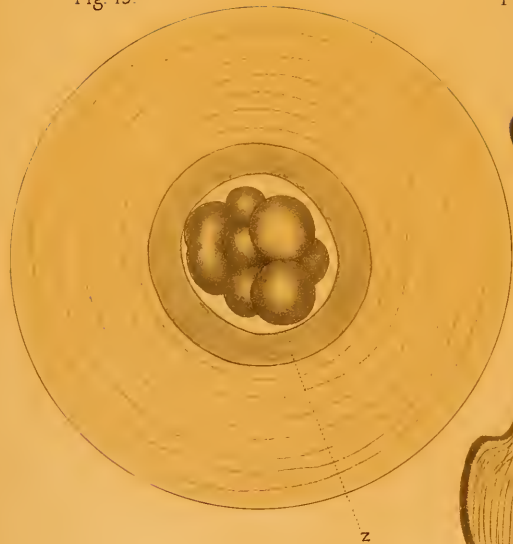


Fig. 18.

x



Fig. 16.

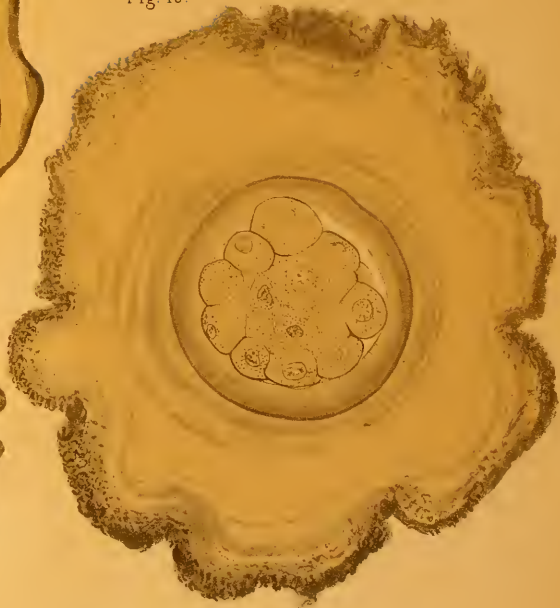


Fig. 19.

x'



Fig. 17.

ALB

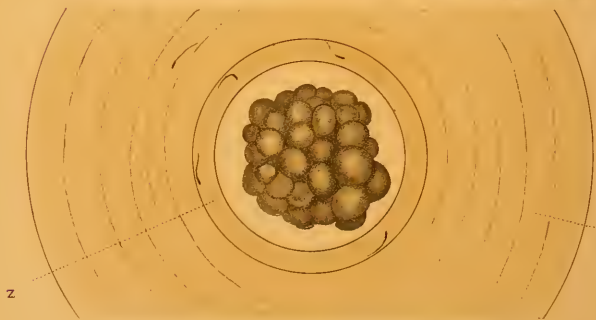


Fig. 20.

ALB

x 465









Fig. 21.



Fig. 23.  
x 465



Fig. 22.



Fig. 24.

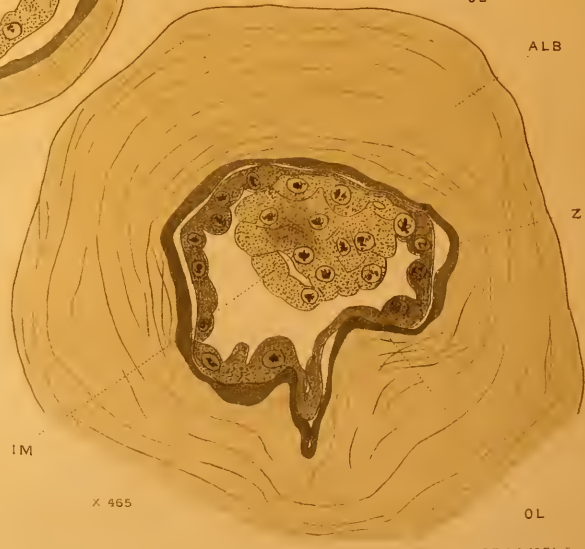


Fig. 25.











Fig. 26.



Fig. 27.



Fig. 28.



Fig. 29.



Fig. 30.



Fig. 31.

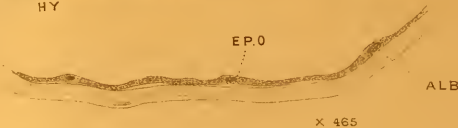


Fig. 32.



Fig. 33.

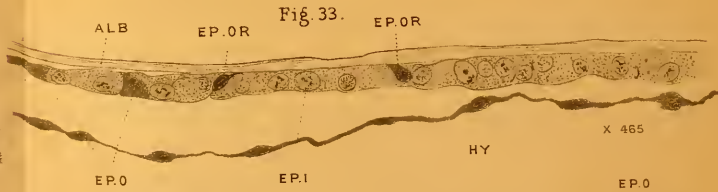
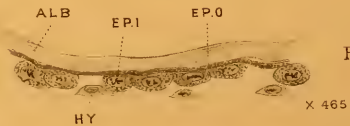


Fig. 34.



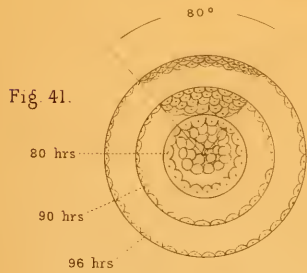
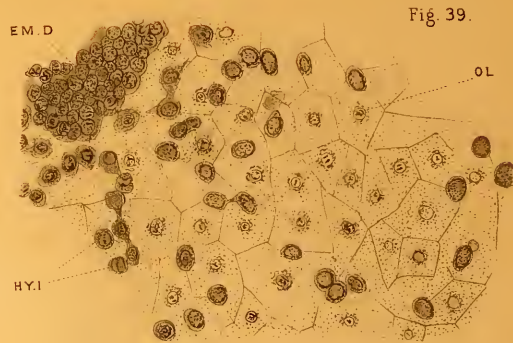
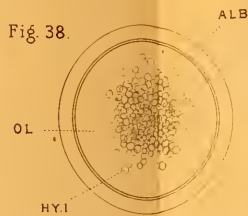
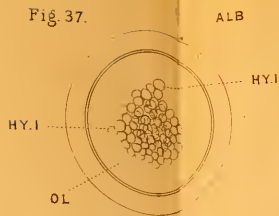
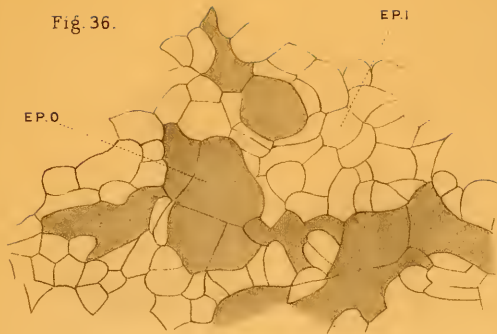
Fig. 35.











Area of most rapid growth of epiblast  
— trager?



Area of rapid growth since 160<sup>th</sup> hour  
— Primitive Streak

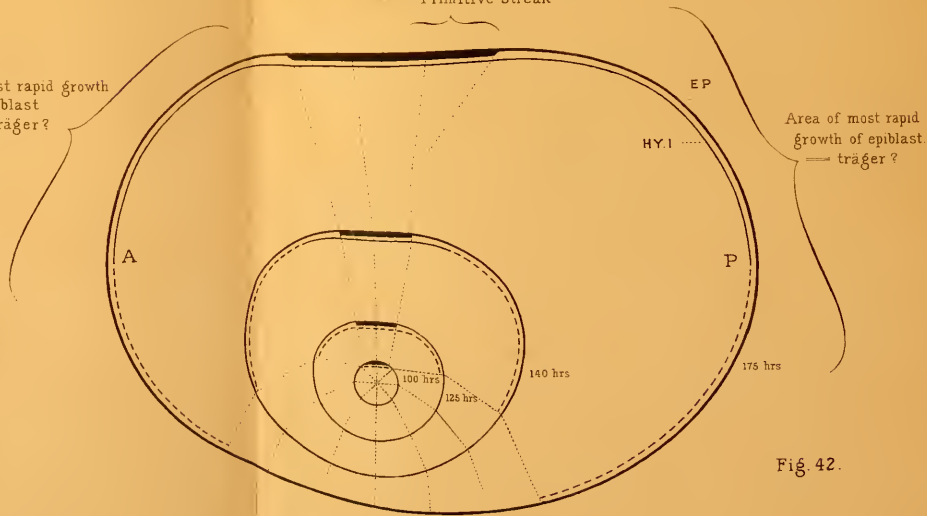




Fig. 1.



Fig. 3.



Fig. 2.

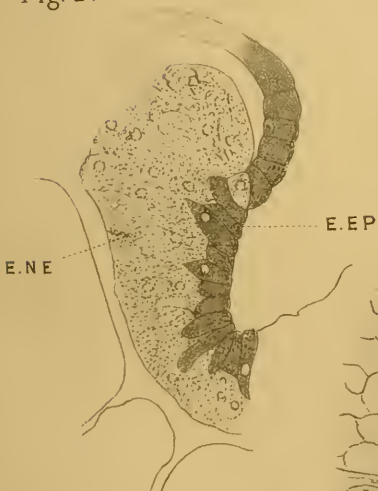


Fig. 5.

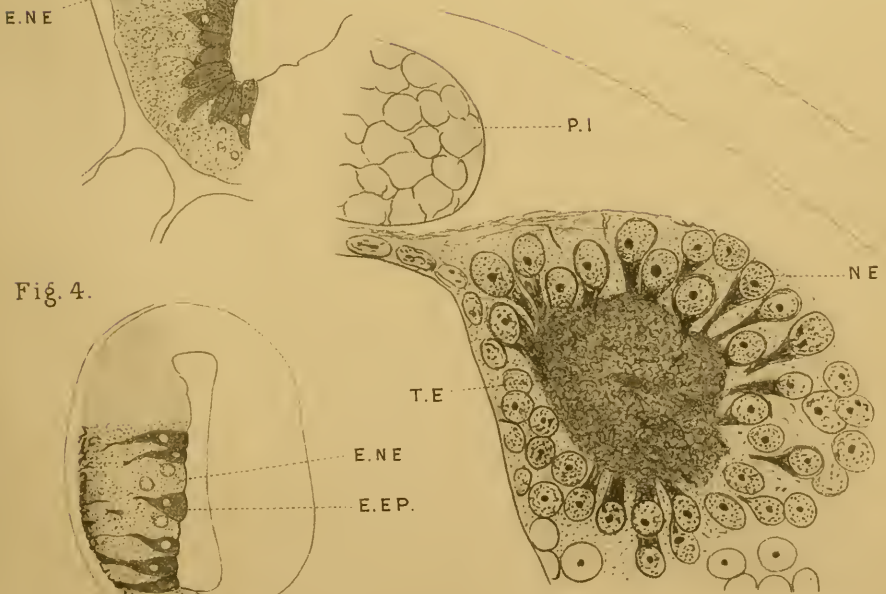
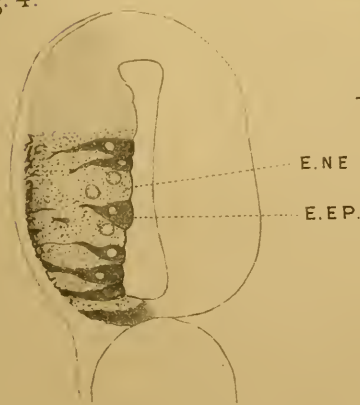


Fig. 4.











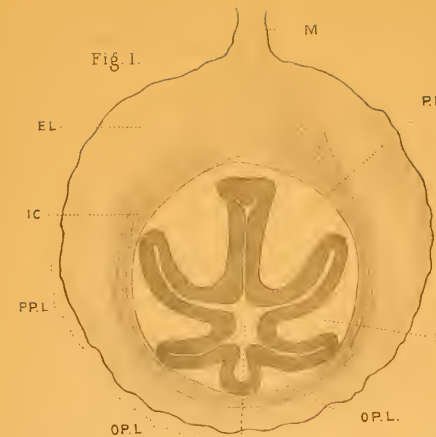


Fig. 1.



Fig. 6.



Fig. 5.



Fig. 7.

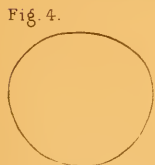


Fig. 4.

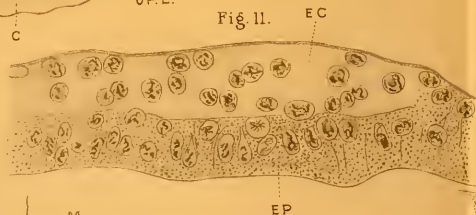


Fig. 11.



Fig. 8.

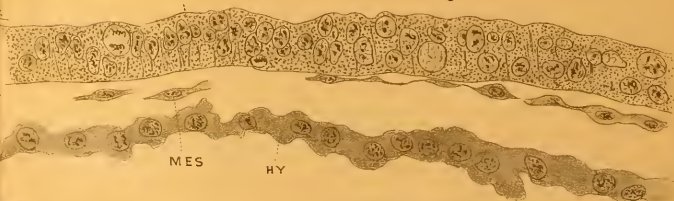


Fig. 9.

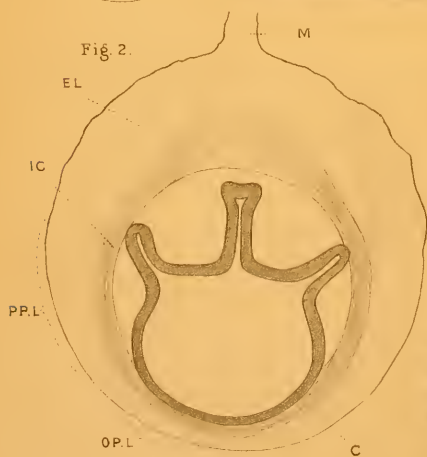


Fig. 2.

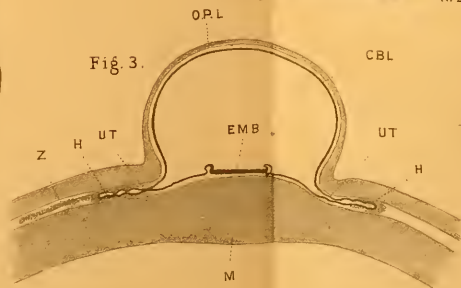


Fig. 3.

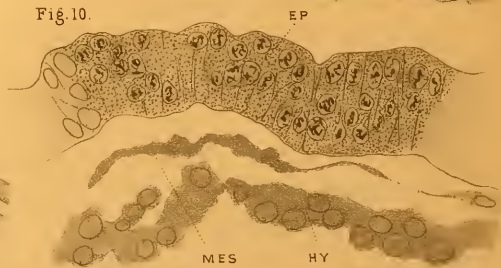


Fig. 10.







Fig. 1.



Fig. 2.



Fig. 3.



Fig. 4.

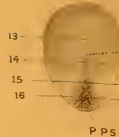


Fig. 4A.

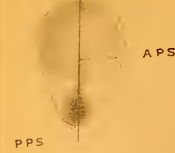


Fig. 7.



Fig. 11.

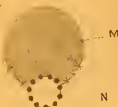


Fig. 12.

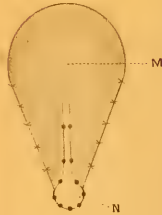


Fig. 39.

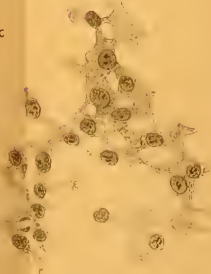


Fig. 5.

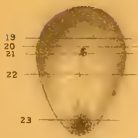


Fig. 6.

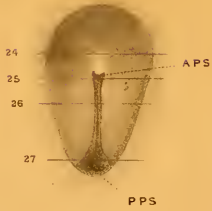


Fig. 8.

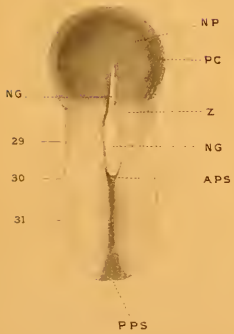


Fig. 9.

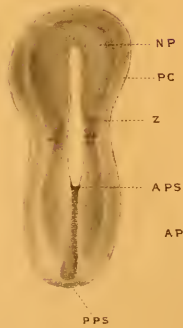


Fig. 10.

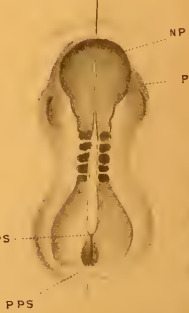


Fig. 17.



Fig. 18.



Fig. 28.

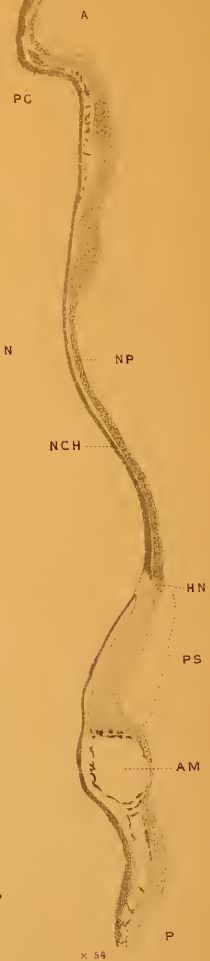










Fig. 13.



Fig. 13 A.



Fig. 14.



Fig. 15.



Fig. 16.



Fig. 19.



Fig. 20.



Fig. 21.



Fig. 22.



Fig. 23.



Fig. 24.



Fig. 25.

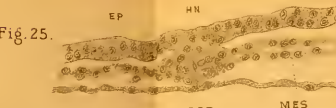


Fig. 26.



Fig. 27.

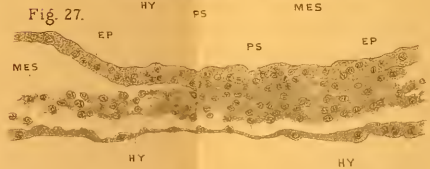


Fig. 29.

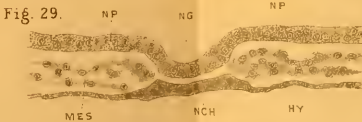


Fig. 30.



Fig. 31.

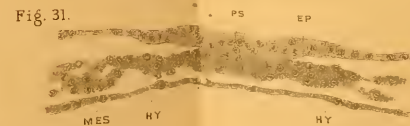


Fig. 32.



Fig. 33.

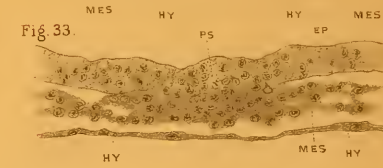


Fig. 34.

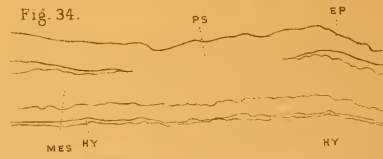


Fig. 35.



Fig. 36.

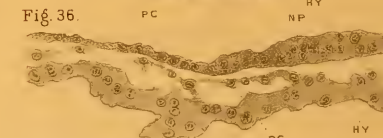


Fig. 37.

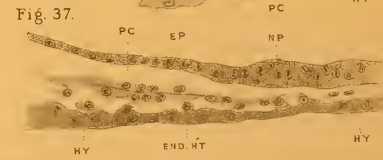


Fig. 38.









Fig. 40.

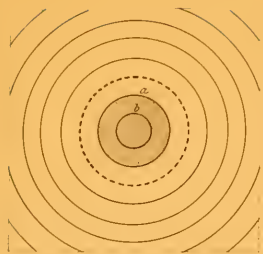


Fig. 41.

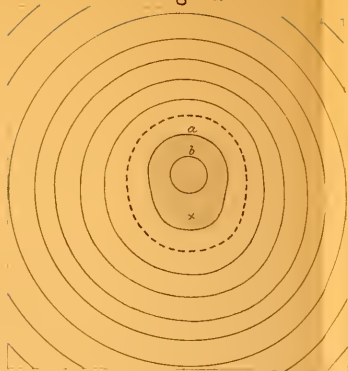


Fig. 44.



Fig. 42.

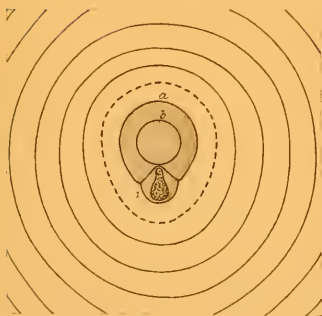


Fig. 43.

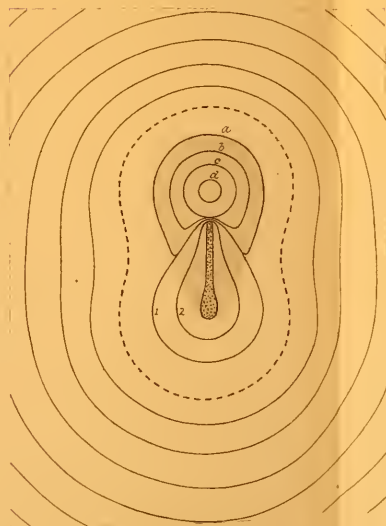


Fig. 45.

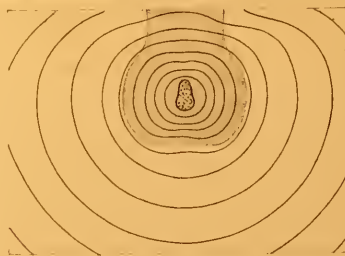






Fig. 1 a



1 b



1 c



1 d



Fig. 2 a



2 b



2 c



2 d



Fig. 3 a



3 b



3 c



3 d



3 e



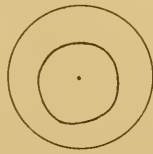
3 f



3 g



Fig. 4 a



4 b



Fig. 5 a



5 b



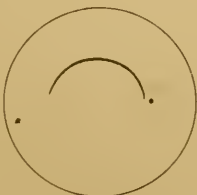
EXO 5 c



5 d



Fig. 6 a



6 b

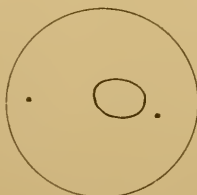








Fig. 7.

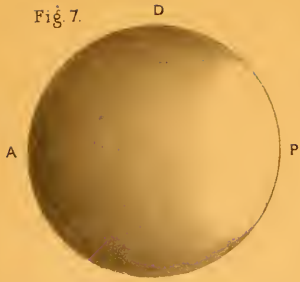


Fig. 8.

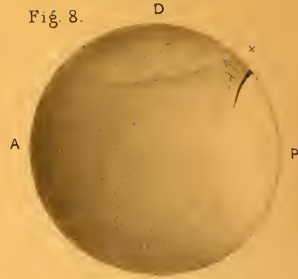


Fig. 9.

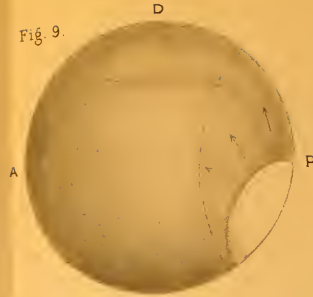


Fig. 10.

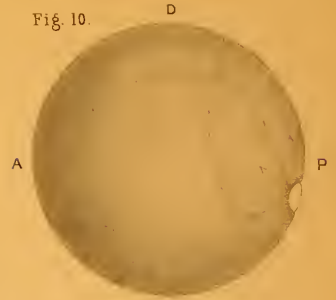


Fig. 12.

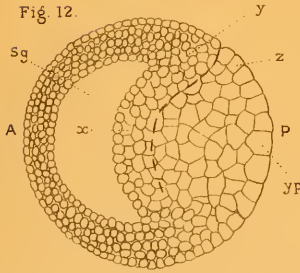


Fig. 13.

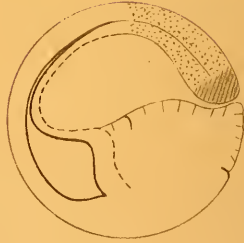


Fig. 15.



Fig. 11.



Fig. 21.

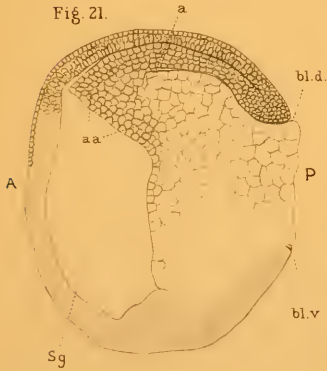


Fig. 16.



Fig. 14.

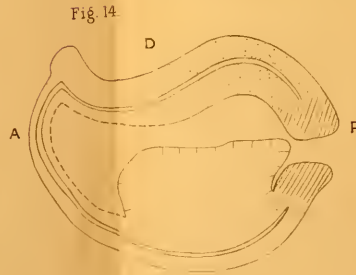


Fig. 17.



Fig. 18.



Fig. 19.



Fig. 20.





Fig. 1.

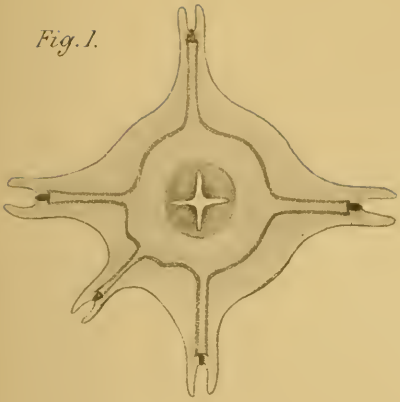


Fig. 2.



Fig. 3.

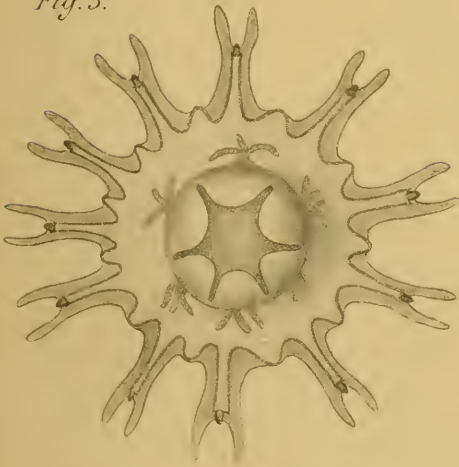


Fig. 4.



Fig. 5.



Fig. 6.

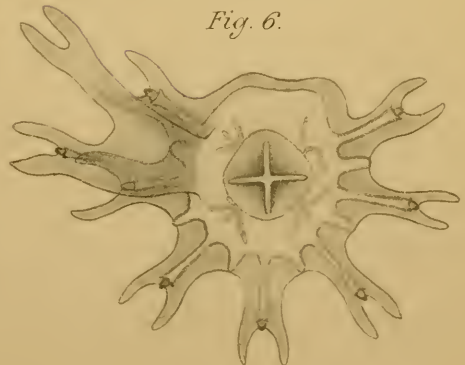


Fig. 7.







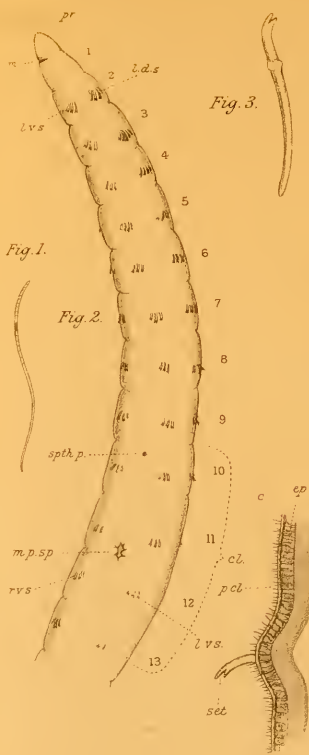


Fig. 3.

Fig. 1.

Fig. 2.

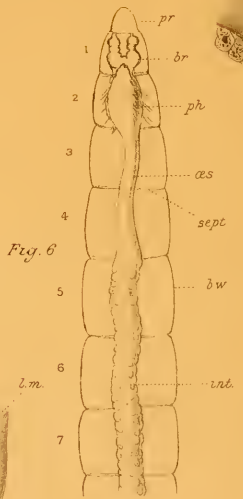


Fig. 6.

Fig. 8.



Fig. 7.

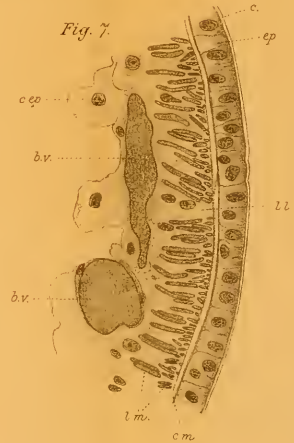


Fig. 9.

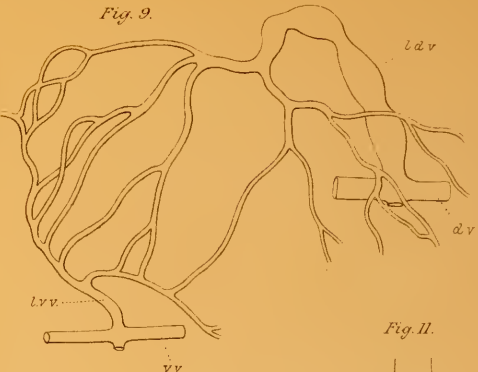


Fig. 11.

Fig. 10.

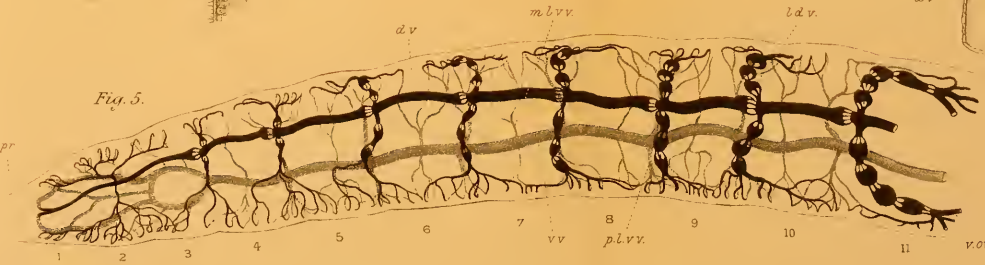
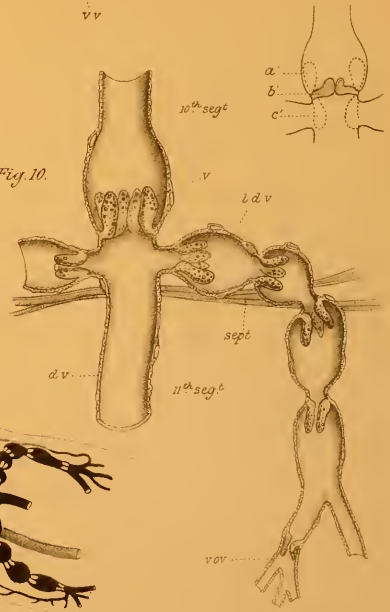
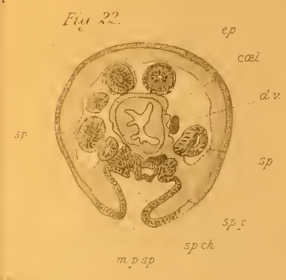
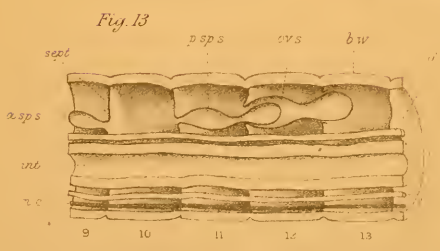
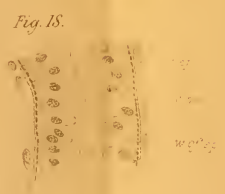
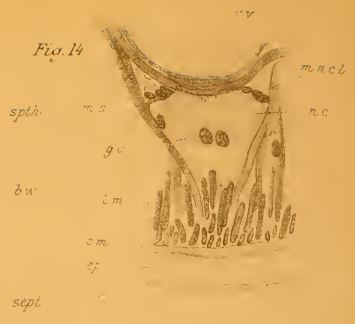
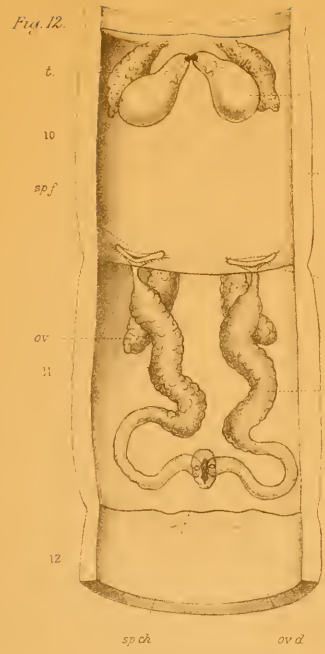


Fig. 5.











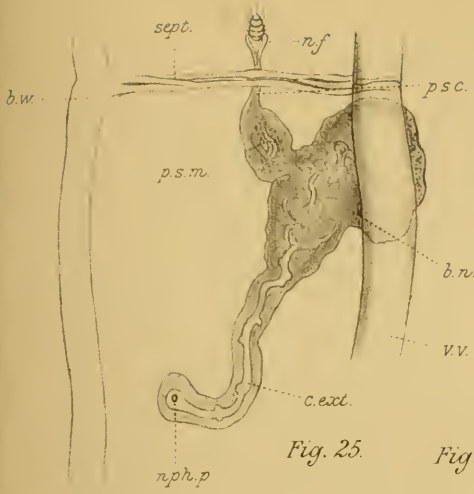


Fig. 25.

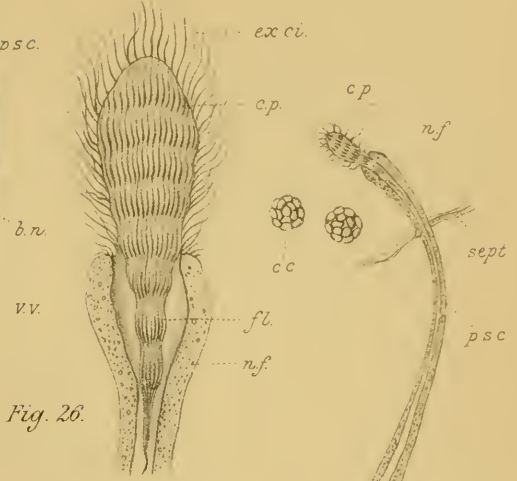


Fig. 26.

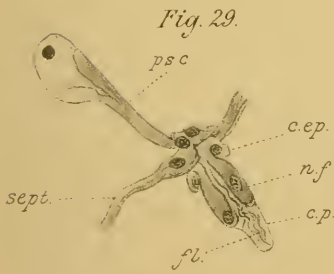


Fig. 29.

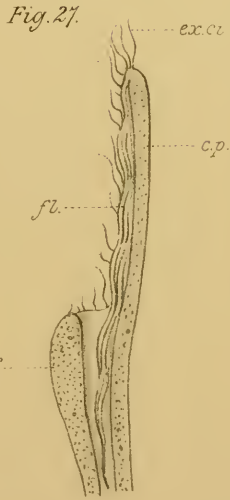


Fig. 27.

Fig. 28.

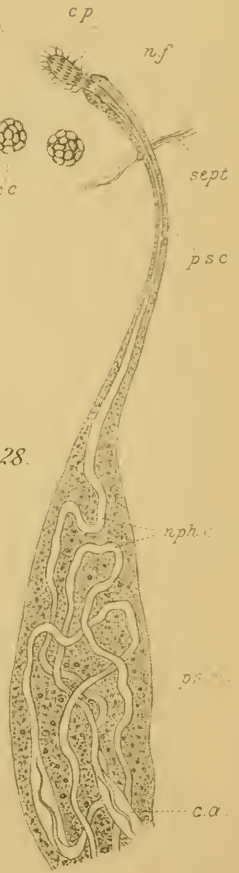


Fig. 30.

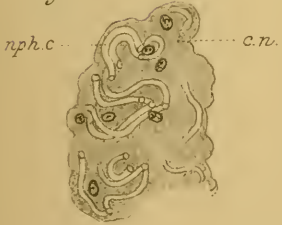


Fig. 31.

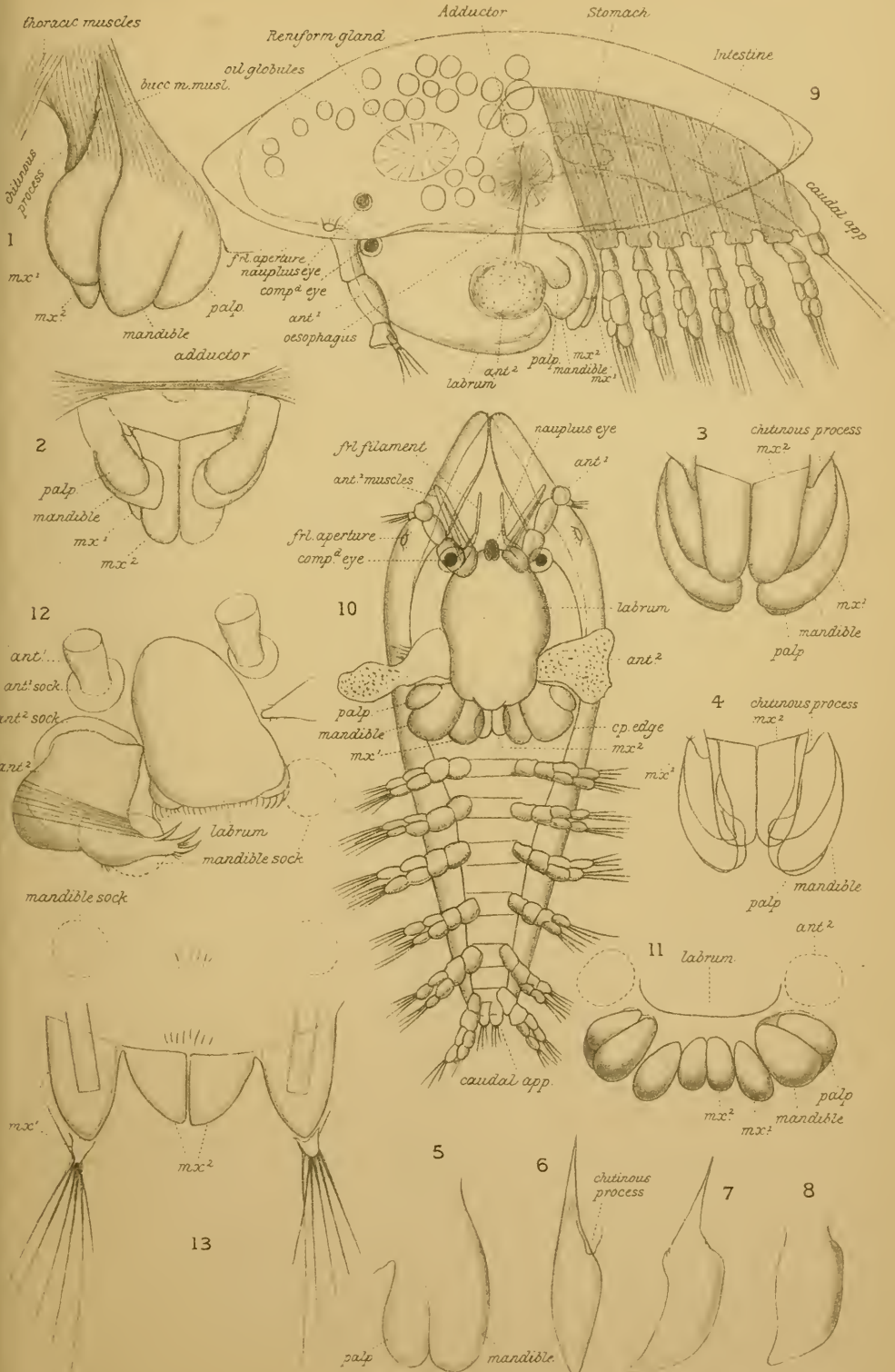


Fig. 32.













1



2



3.



4



5



6



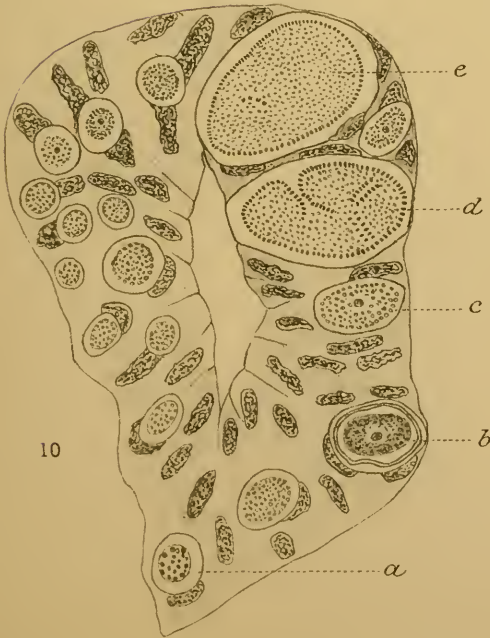
8



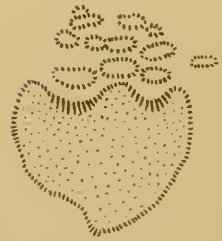
9



7



10



12

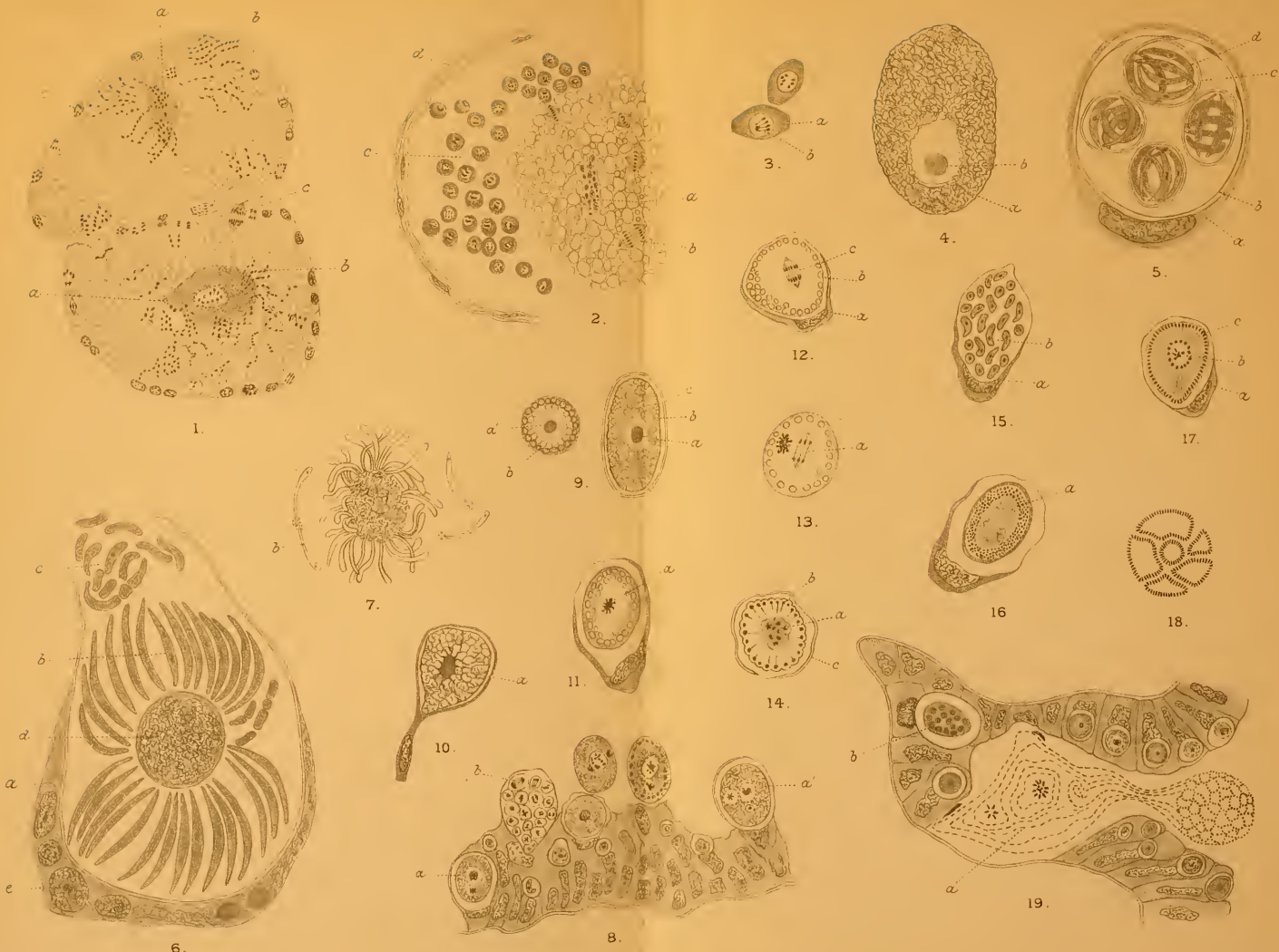


11



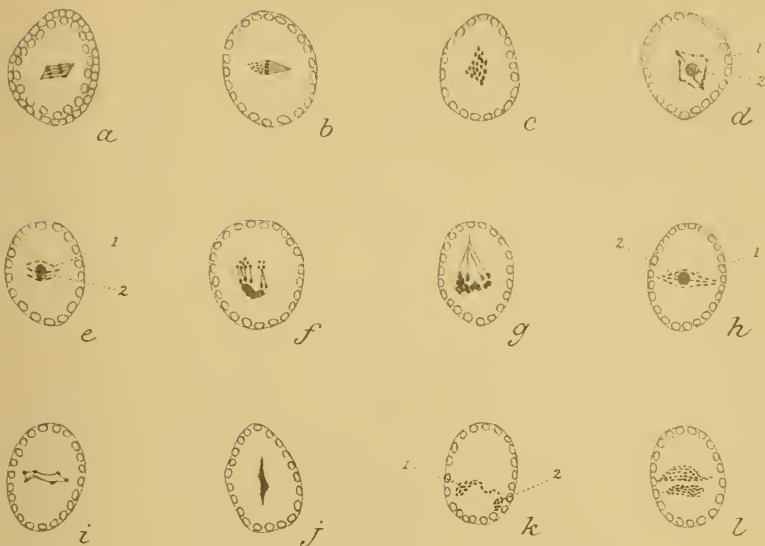










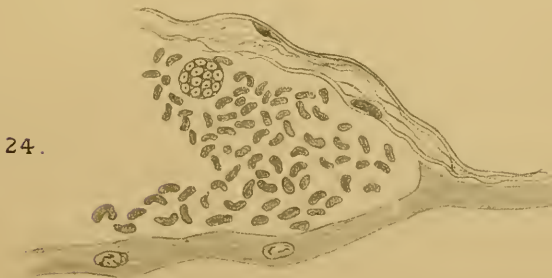


20.  
x 1000



21.







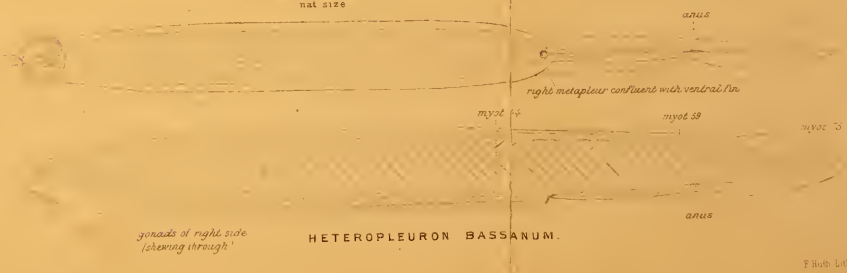
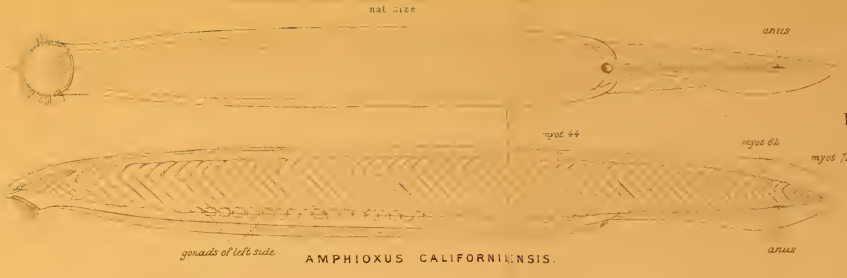
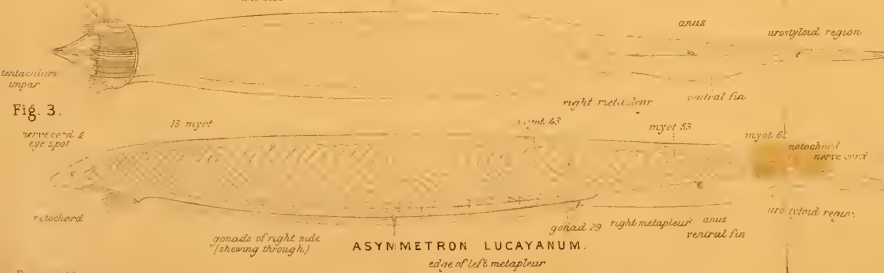
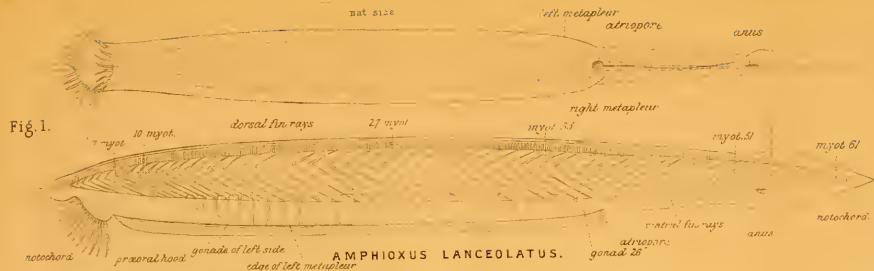
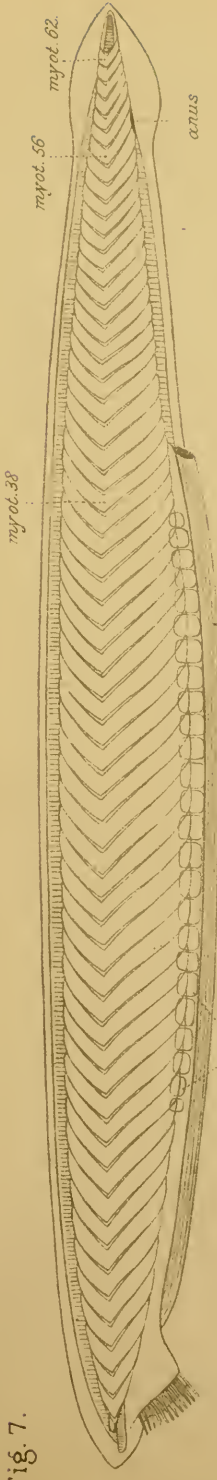






Fig. 7.



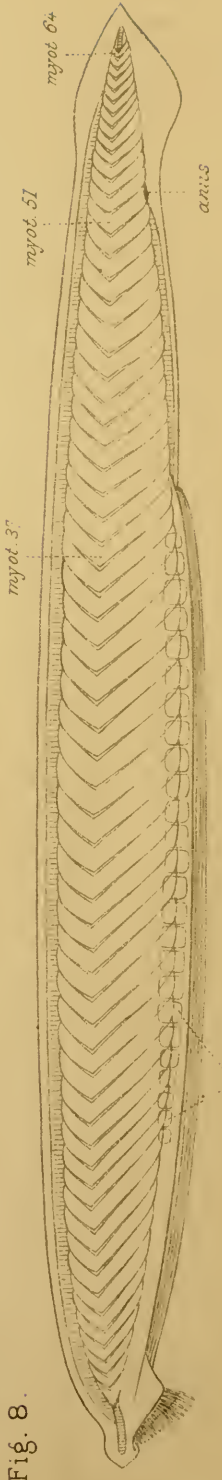
gonads of right side  
(showing through)

HETEROPLEURON CINGALENSE.

nat. size.



Fig. 8.



gonads of left side

AMPHIOXUS BELCHERI.

Bayzard de.







Fig. 1.



Fig. 3.



Fig. 2.



Fig. 4.



Fig. 5.







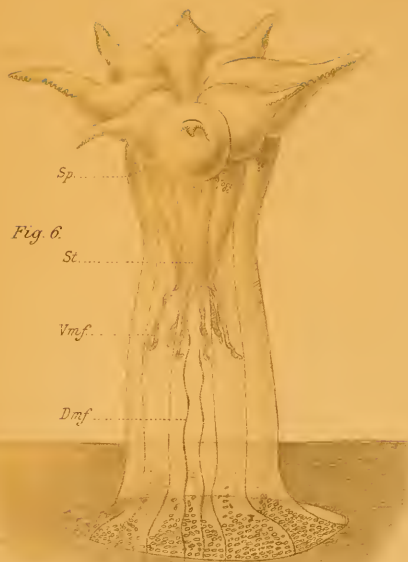


Fig. 6.

Fig. 8.

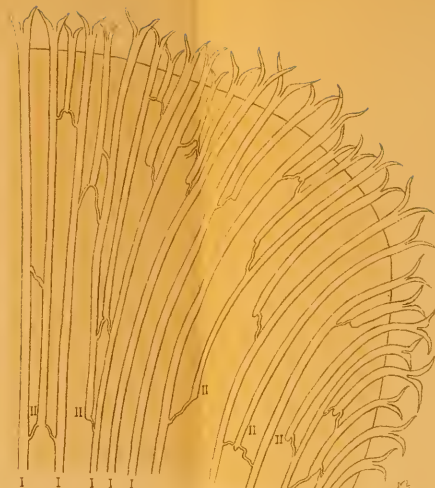


Fig. 10.

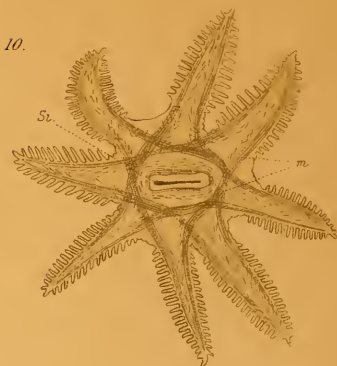


Fig. 9.

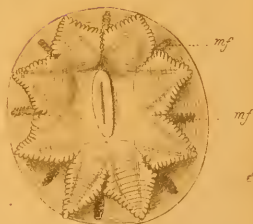


Fig. 11.

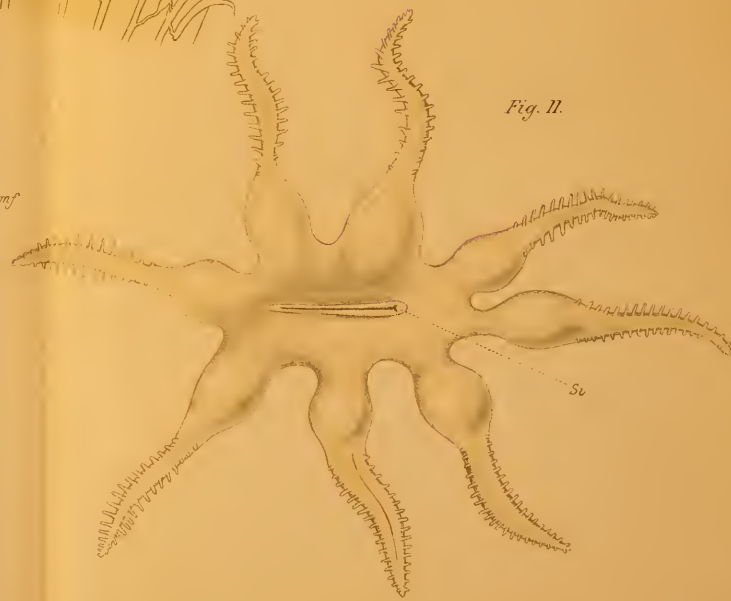


Fig. 7.











Fig. 12.

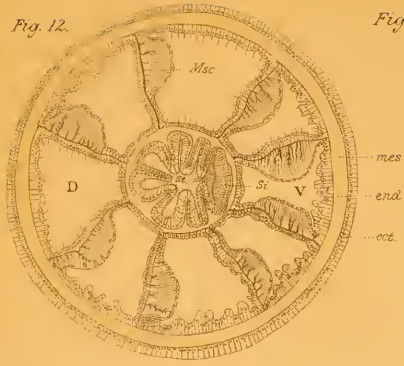


Fig. 14.

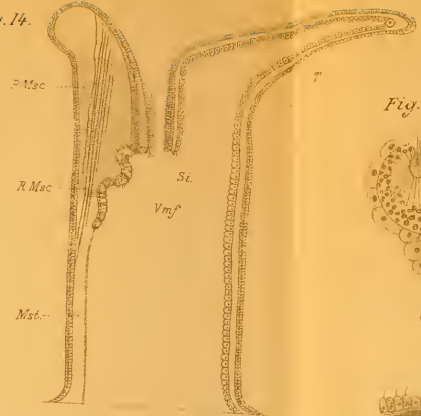


Fig. 15.



Fig. 16.



Fig. 20.



Fig. 13.



Fig. 21.



Fig. 22.

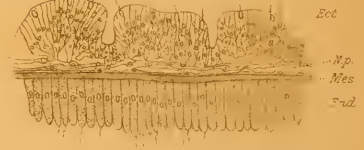


Fig. 17.

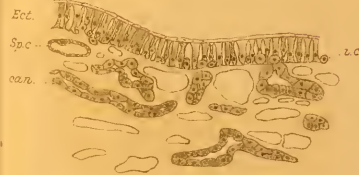


Fig. 23.



Fig. 18.



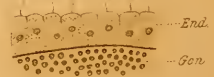
Fig. 19.



Fig. 24.



Fig. 25.









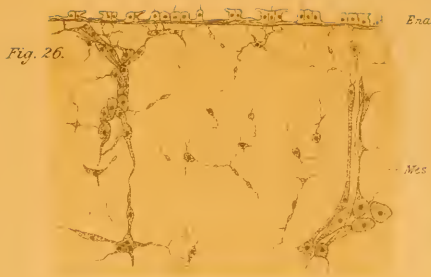


Fig. 26.



Fig. 27.



Fig. 28.

Fig. 29.

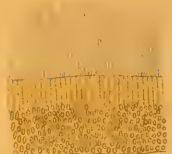


Fig. 31. Fig. 32.

Fig. 30.



Fig. 40.

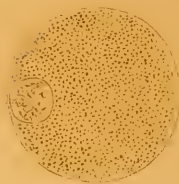


Fig. 41.

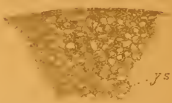


Fig. 43.



Fig. 33.



Fig. 34.

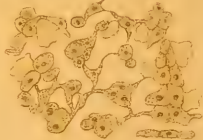


Fig. 38.



Fig. 39.

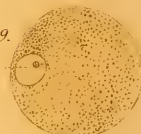


Fig. 42.



Fig. 47.

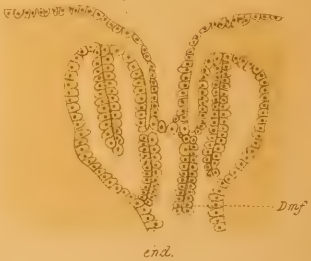


Fig. 35.

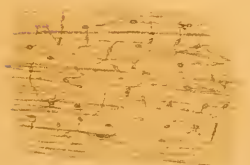


Fig. 36.



Fig. 37.



Fig. 45.

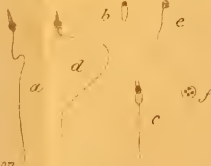


Fig. 44.



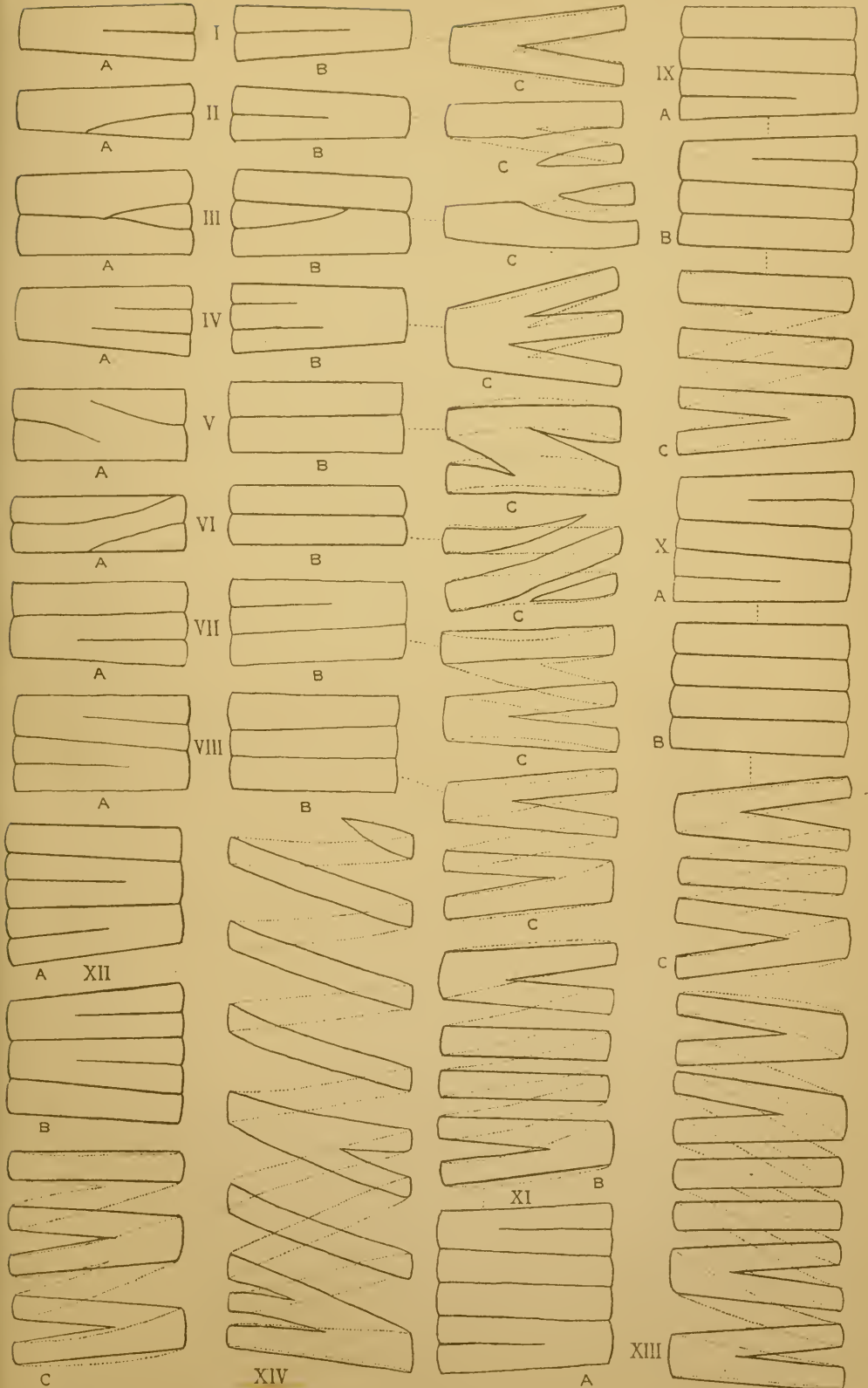
Fig. 46.



Fig. 48.





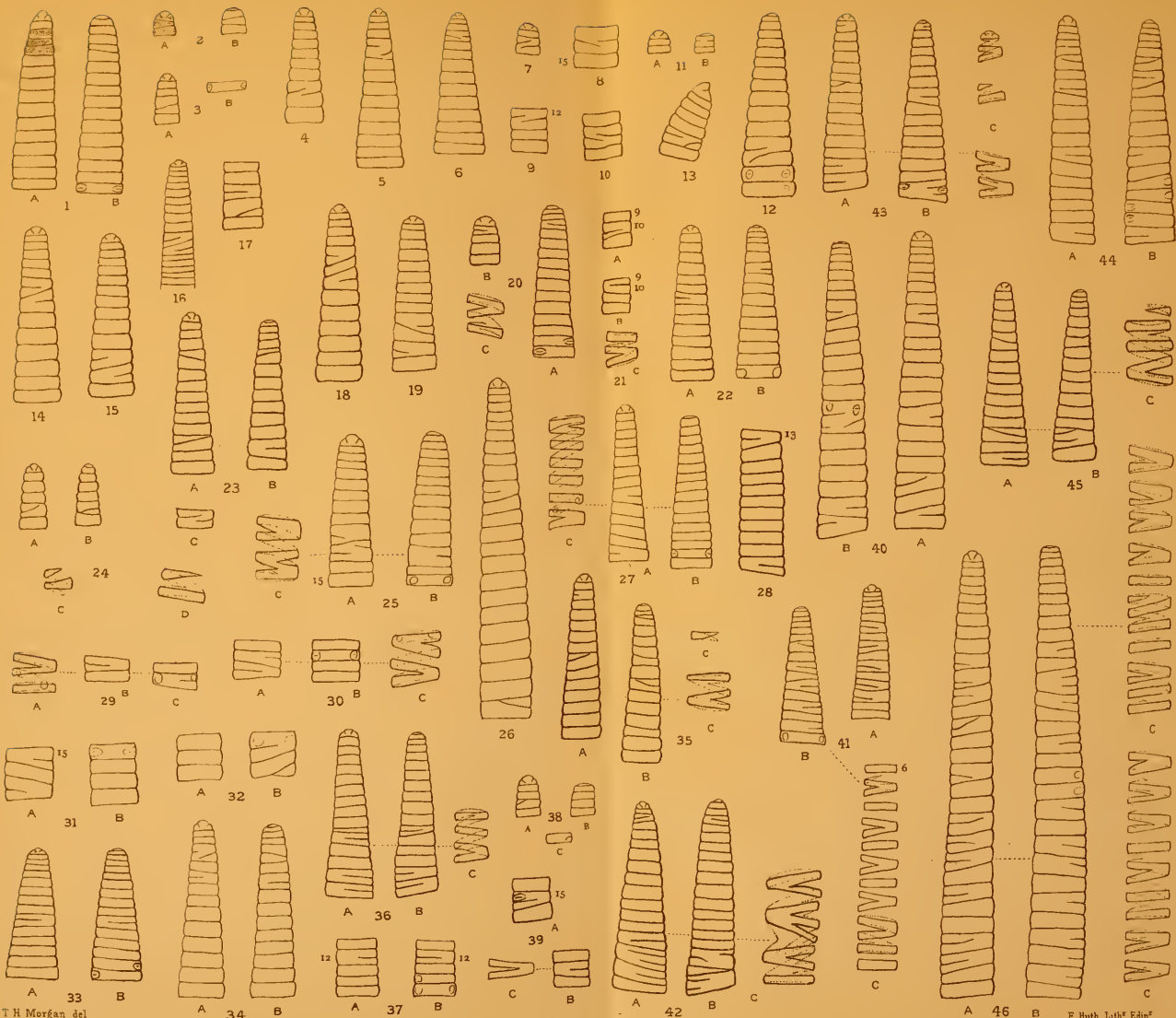




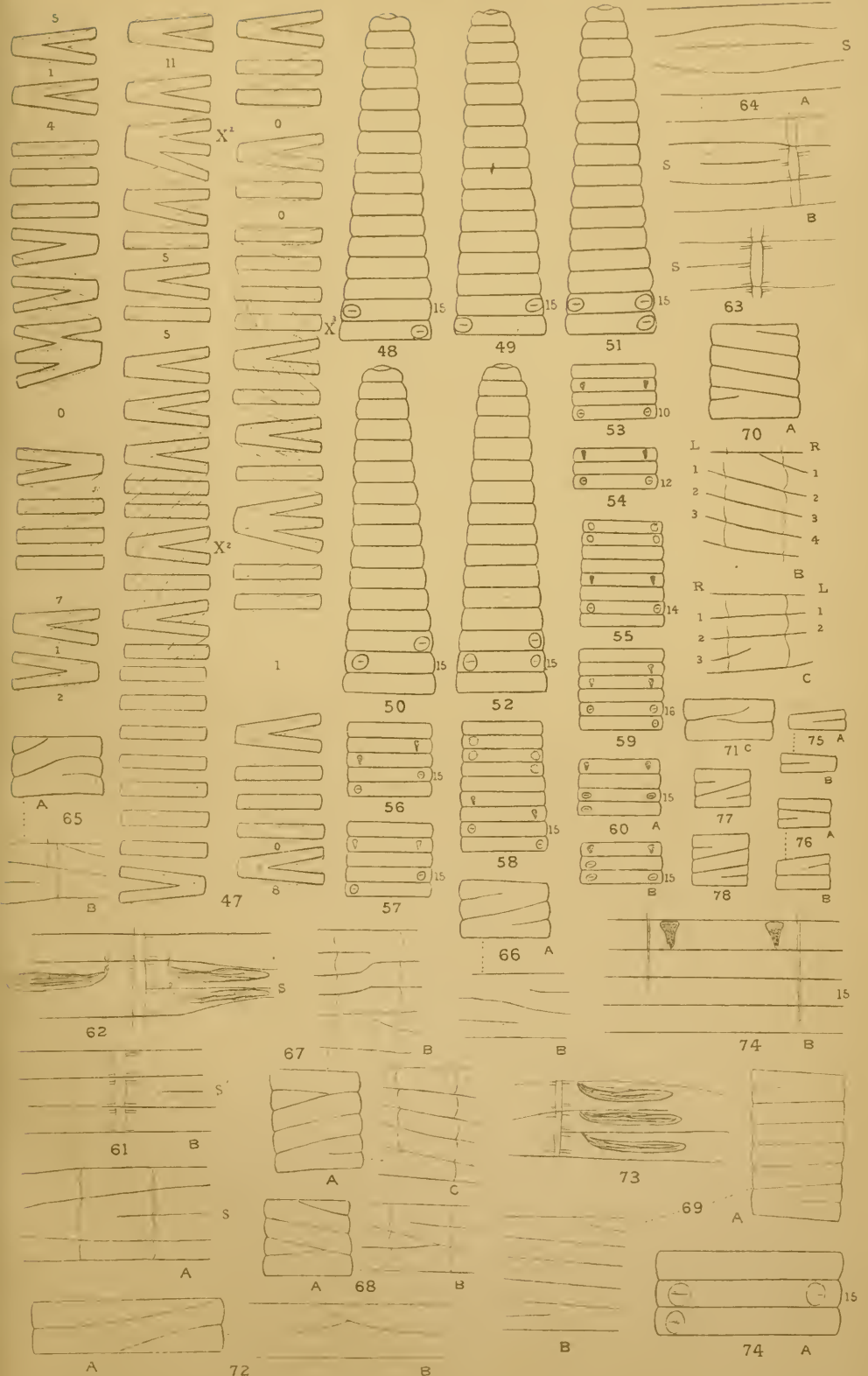










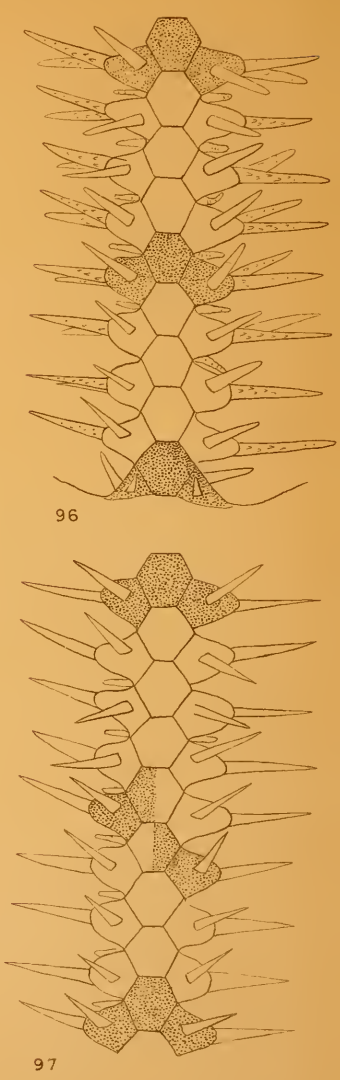
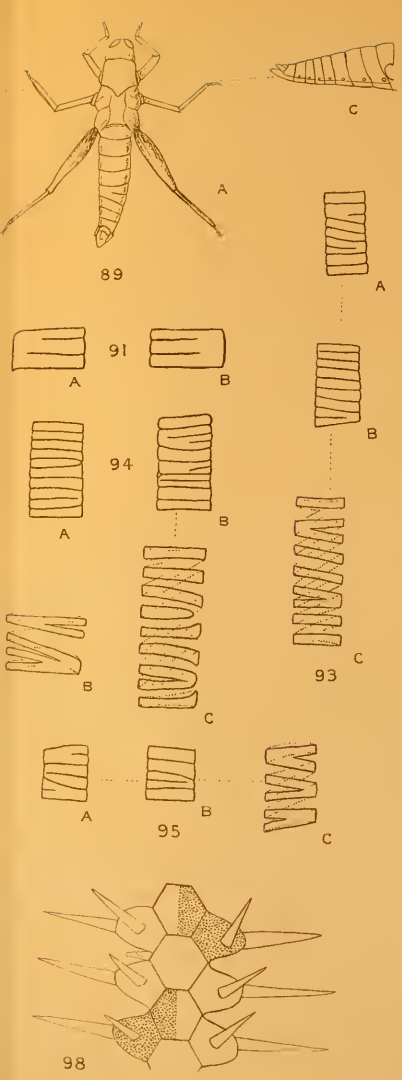
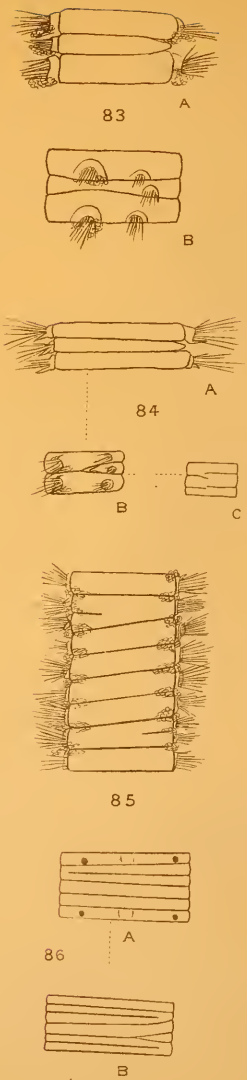
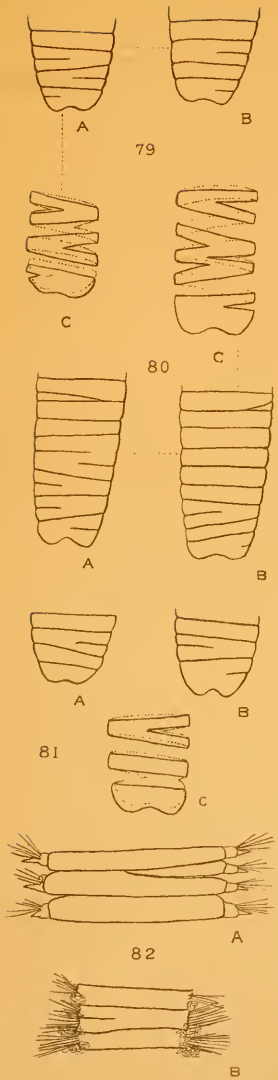








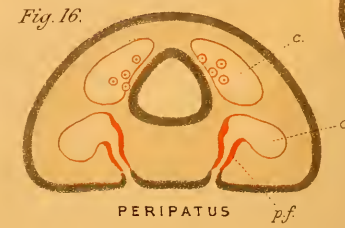
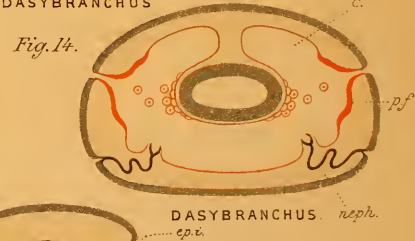
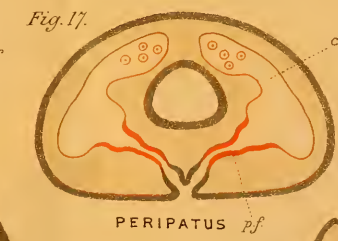
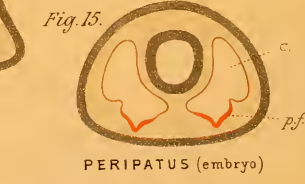
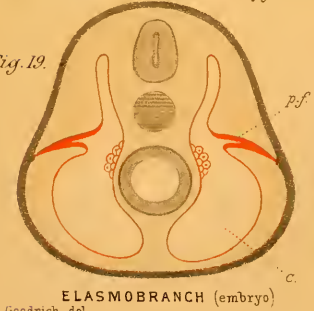
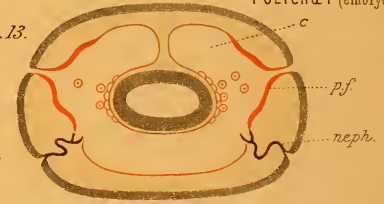
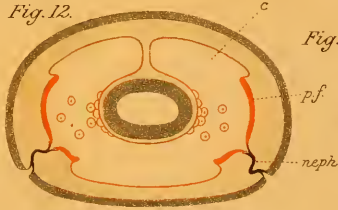
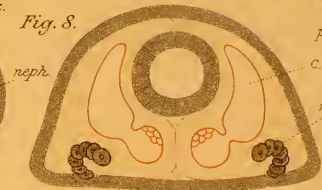
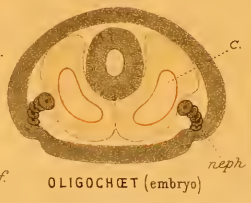
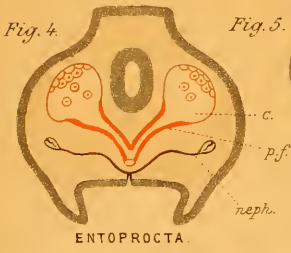
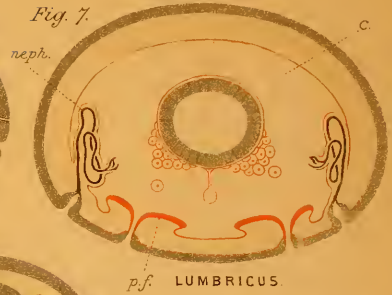
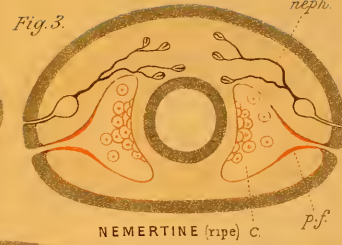
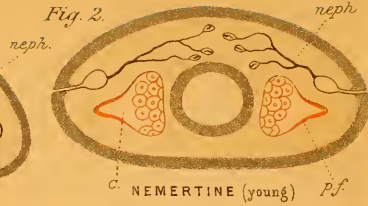
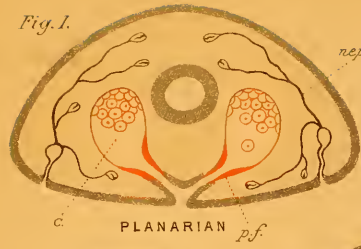












Goodrich del

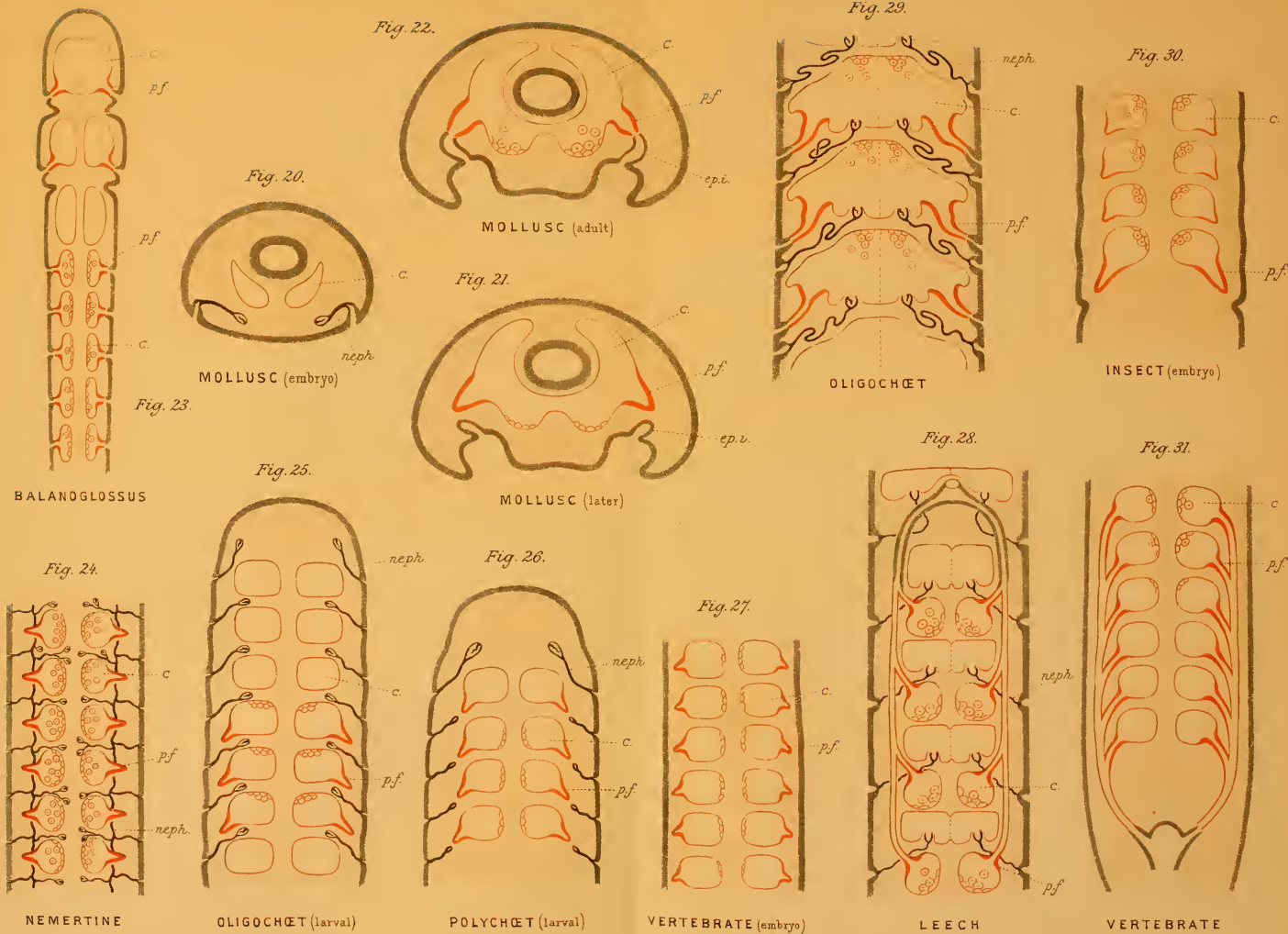
F Huth, Lithr Edinr













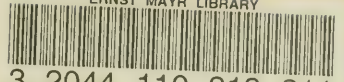








ERNST MAYR LIBRARY



3 2044 110 319 811

