

Gendergap on Wikipedia



Jane Darnell

Wikimedia Conferentie Nederland 4 november 2017

Utrecht

Er zijn minder vrouwen op Wikipedia

- Er zijn minder vrouwen die bijdragen
- Er zijn minder biografieën van vrouwen
- Er zijn minder bronnen over vrouwen

There are fewer women on Wikipedia

- *Fewer women contribute*
- *There are fewer biographies of women*
- *There are fewer sources about women*

Women in the Rijksmuseum



Schikken met bloemen in een glazen vaas
Rachel Ruysch (1664-1700)
1664-1700

Rachel Ruysch was de dochter van de hoogleeraar anatomie Hendrik Ruysch. Naar volkenstam werd al vroeg erkend en zij ontwikkelde zich tot een beroemde schilderes van bloemstillevens. Zij was meester van twee handviken, maar maakte de meeste van zichzelf haar beroep. Aan de Haagse en Londen verbleef zij vele jaren, en in de laatste van de Puff, een Duits verstand, bewees zij tot nu toe.

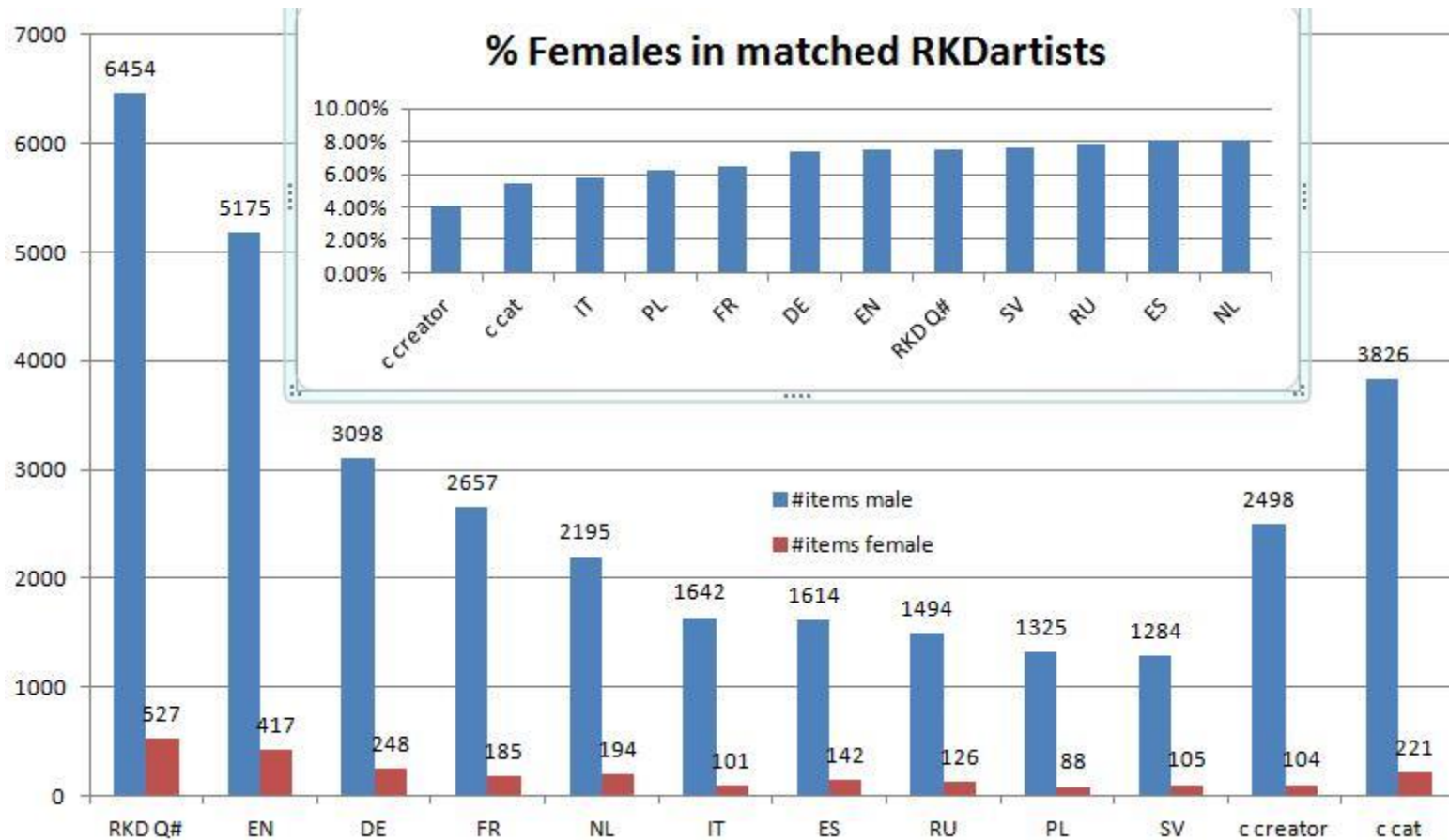
Still Life with Flowers in a Glass Vase
Rachel Ruysch (1664-1700)
oil on canvas, 1672

Rachel Ruysch was the daughter of Frederick Ruysch, a professor of anatomy. Her artistic talent was recognized early on and she became a renowned painter of floral still lifes. Even though she was too often, she unfortunately managed to pursue a professional career in the Hague and Germany, and she was appointed court painter to the Elector Palatine.



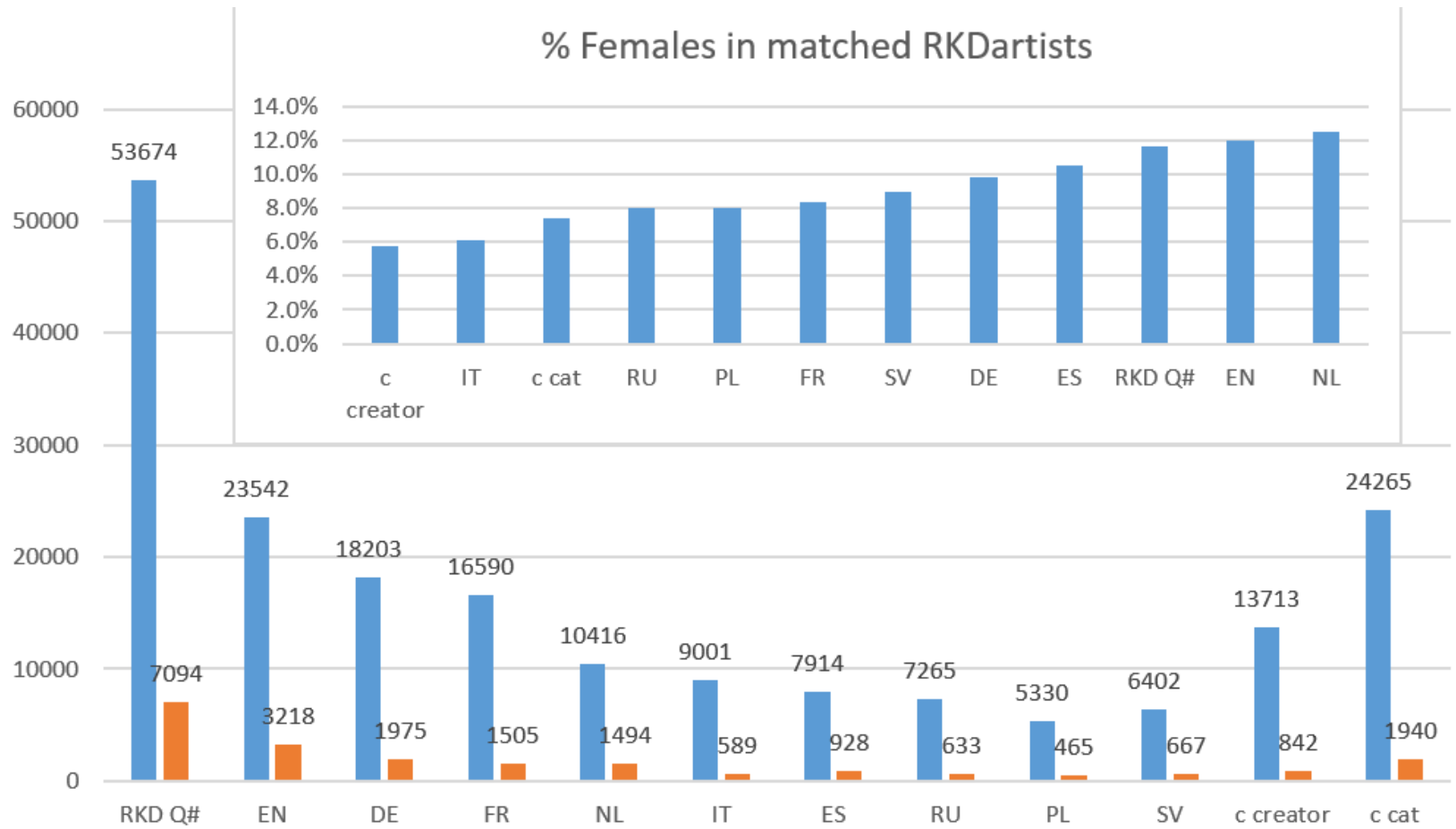
%Females in Wikis matched to RKD

Slide WCN 1 Nov 2014



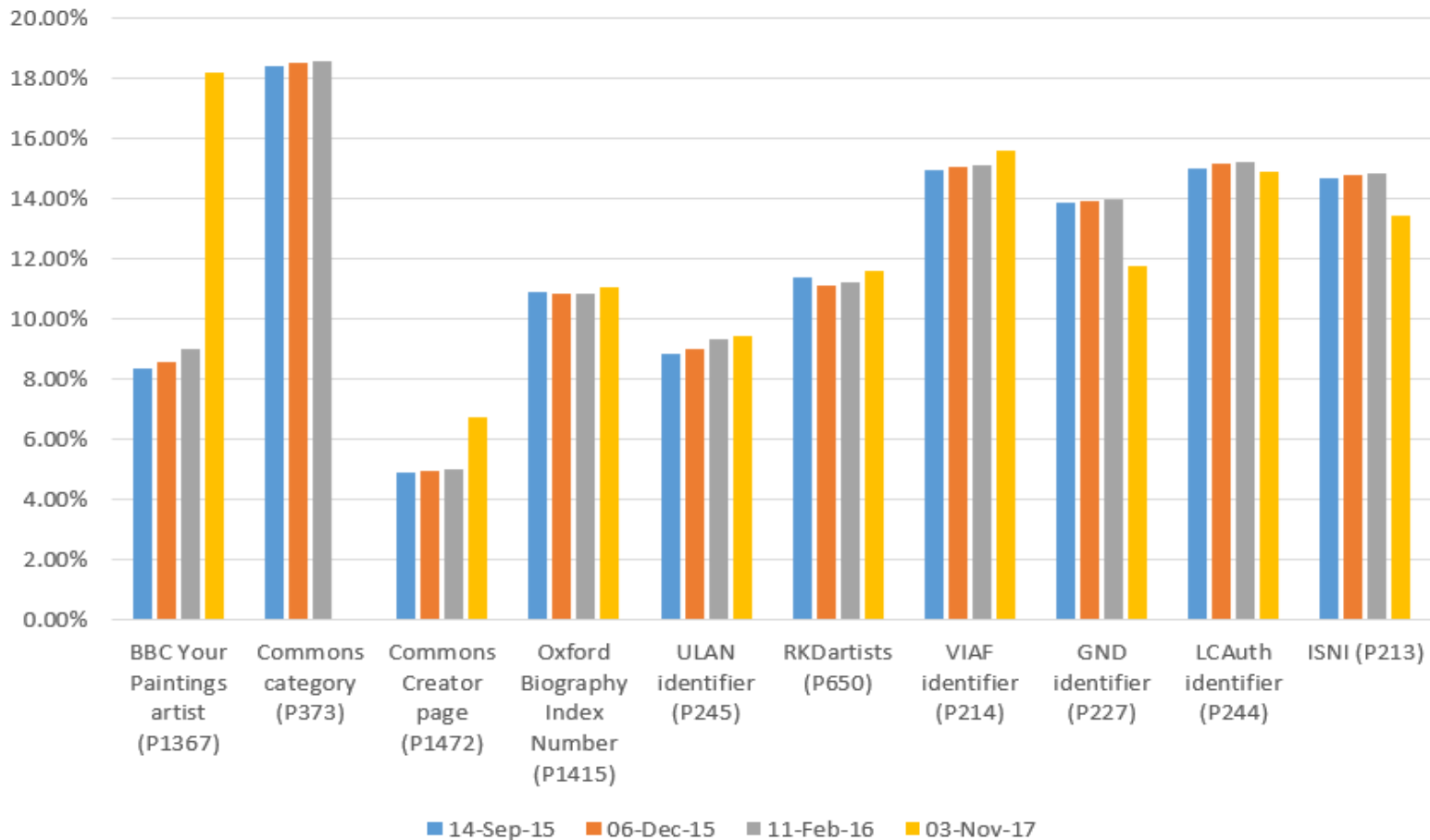
Moving the needle: Wikidata helps

Situation 3 Nov 2017



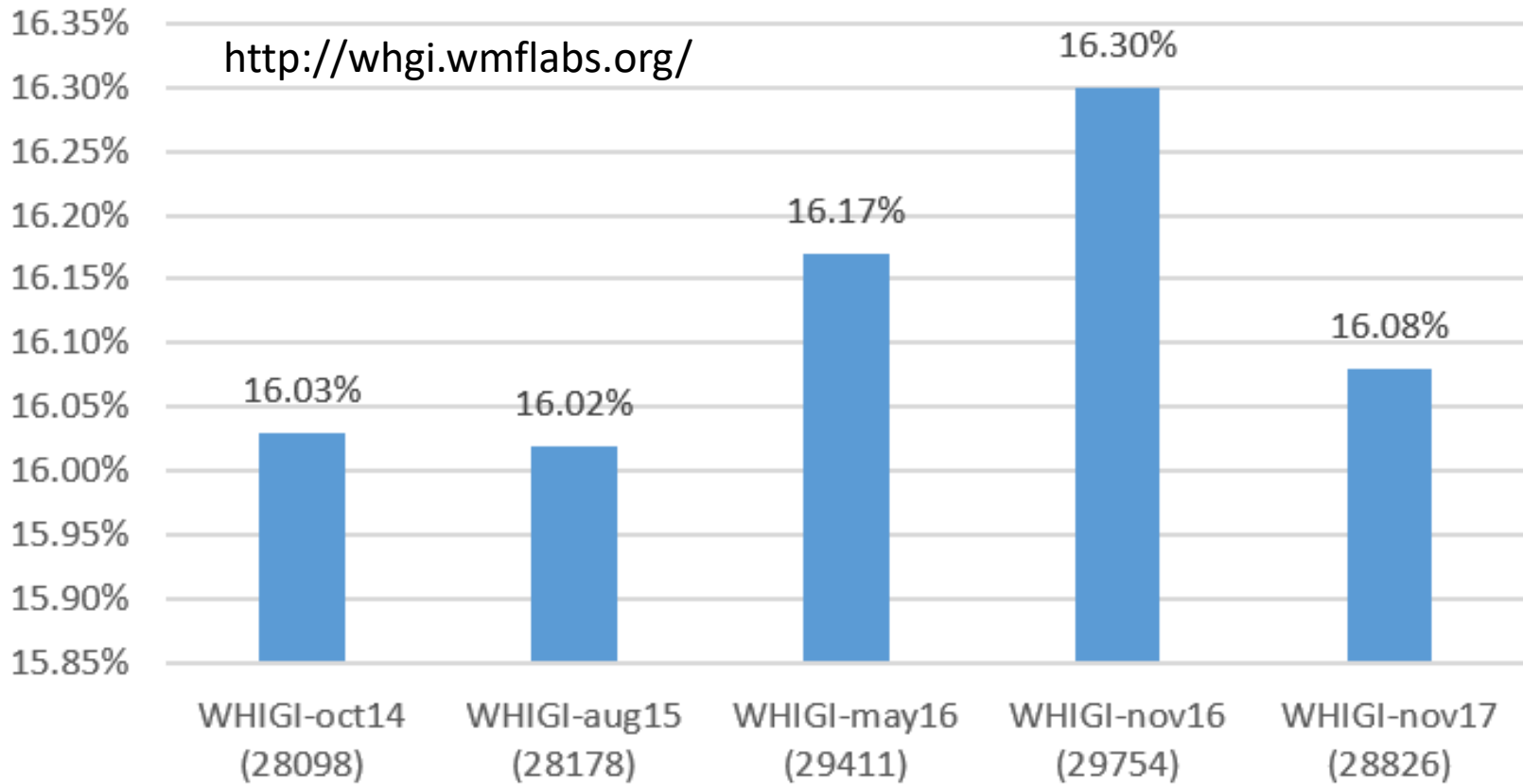
RKDartists as “authority control”

Gendergap: percentages female items in Wikidata
per Authority Control property



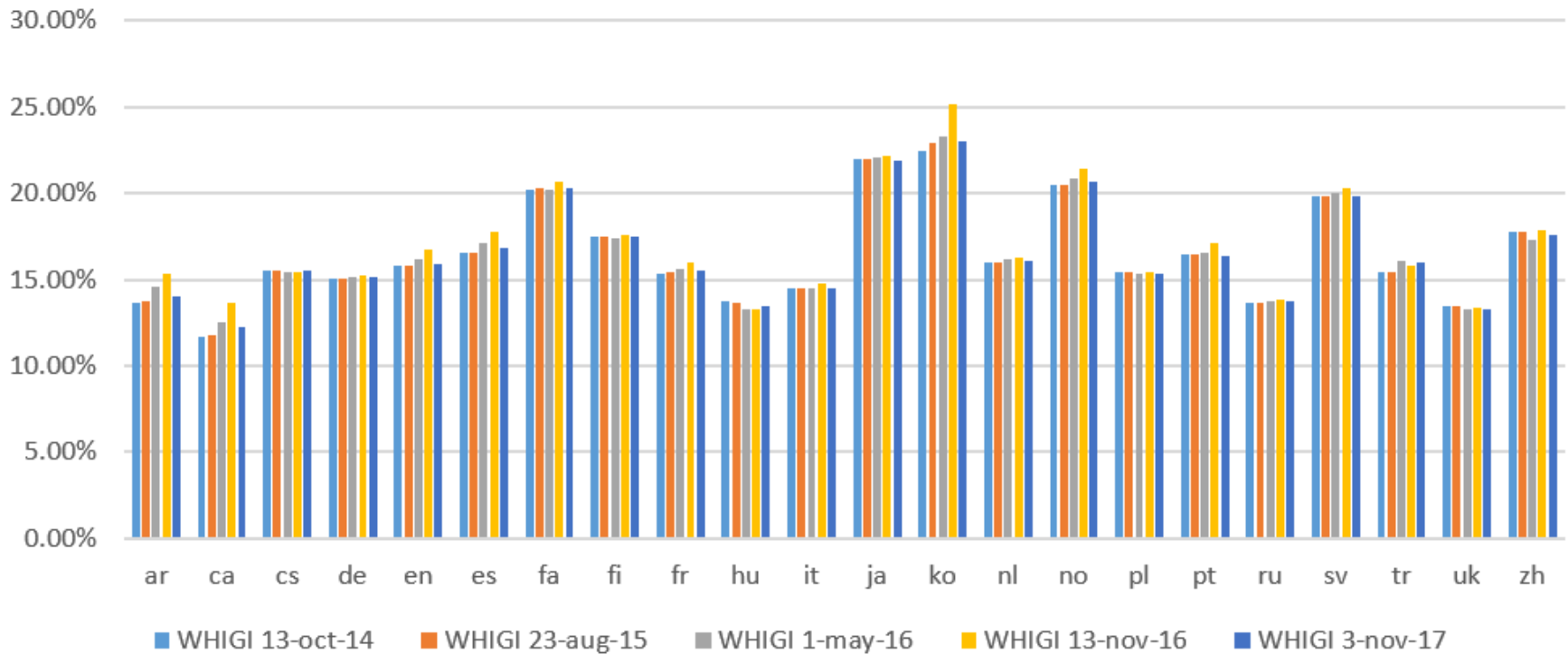
WMNL Gendergap werkgroep

%female vs total female in nlwiki

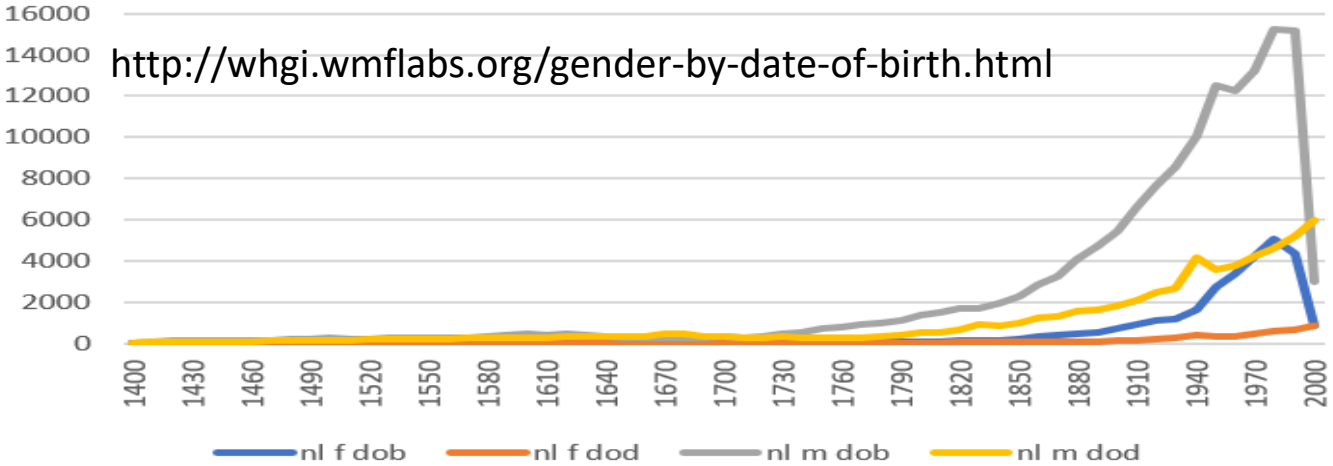
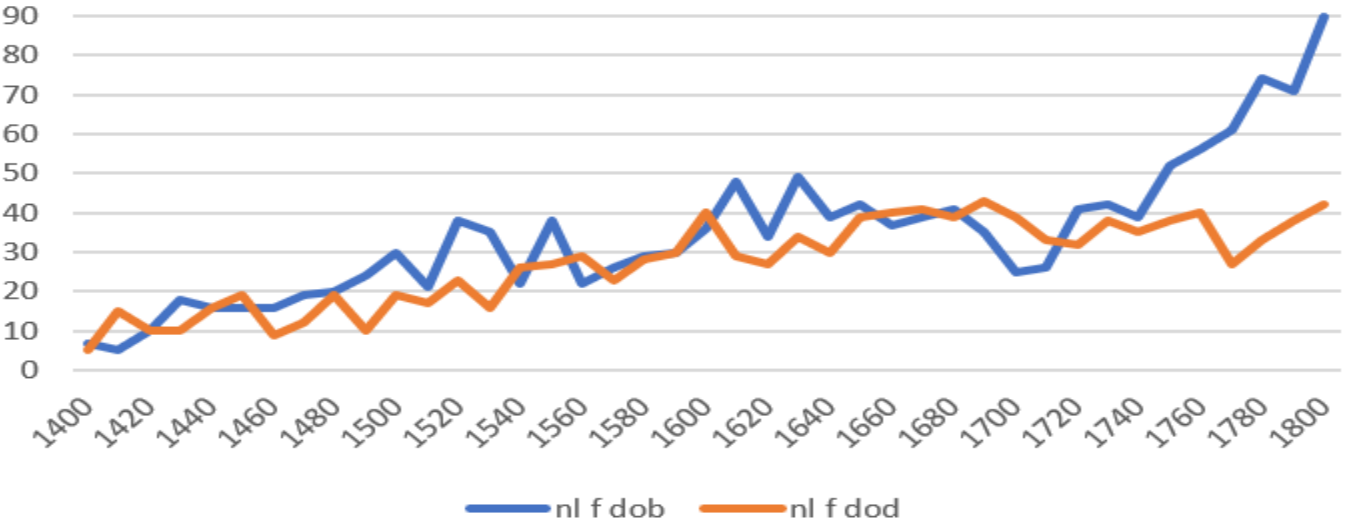


Dutch vs. other Wikipedias

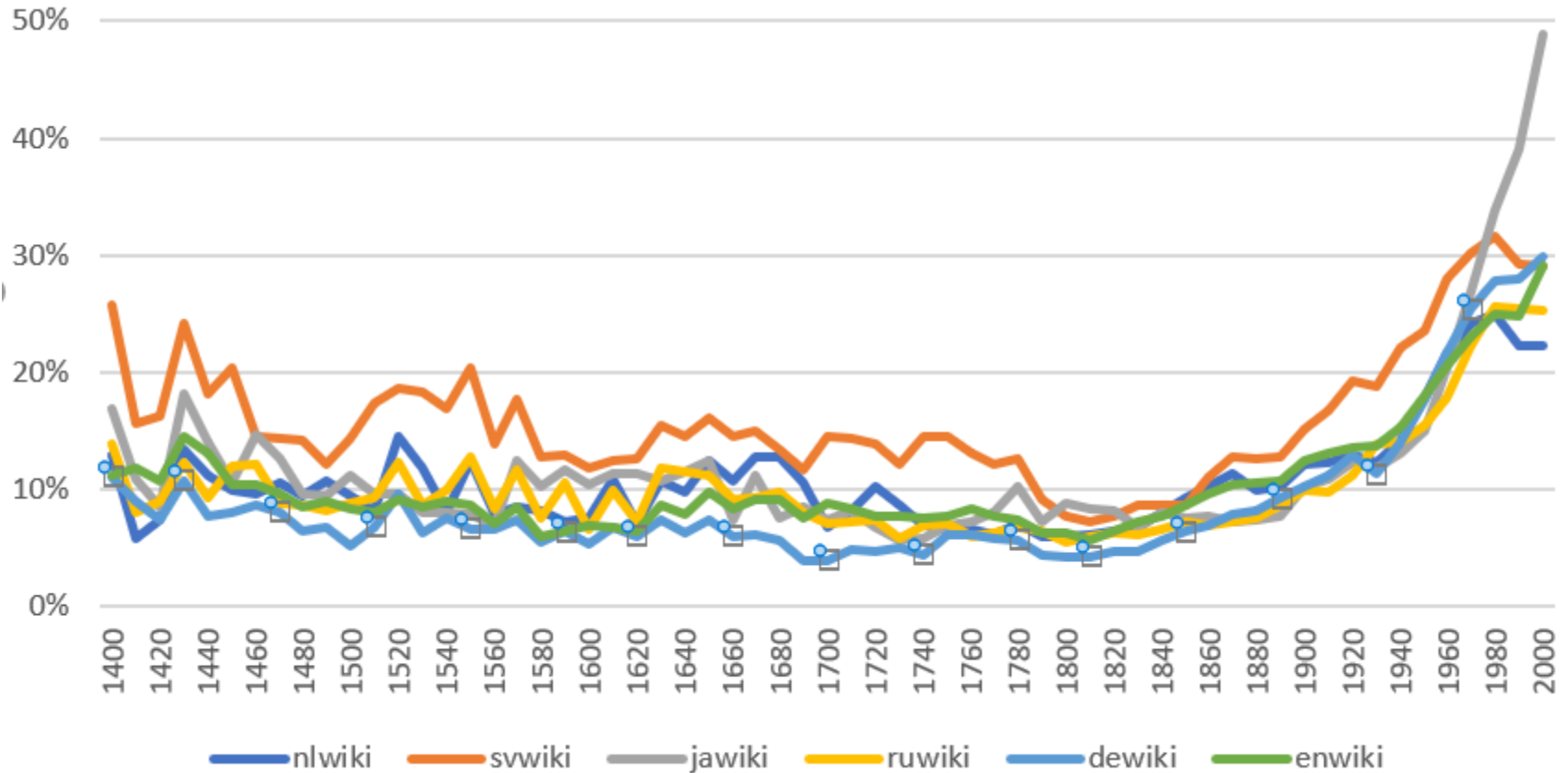
Moving the Needle in Wikidata - %Female in Wikipedia languages with over 10,000 female biographies (Data from WHIGI 3-nov-2017)



#biographies per decade by dob/dod



%Female per WP language: decades



Women born before 1800, with image (P18), but not “depicted” (P180)



11, 1175
commons:Beatriz de Dia - BN
:12473 1.jpg
wd:Q4498



11, 1200
commons:Beatriz de Dia - BN
:12473 1.jpg
wd:Q4498



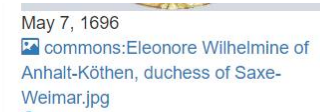
Oct 14, 1630
commons:Sophie von der Pfalz als Indianerin.jpg
wd:Q57224



Jan 1, 1290
commons:Marguerite de Bourgogne.jpg
wd:Q70590



Aug 18, 1575
commons:Countess Palatine Anna Maria of Neuburg.jpg
wd:Q70700



May 7, 1696

commons:Eleonore Wilhelmine of Anhalt-Köthen, duchess of Saxe-Weimar.jpg

wd:Q71479



Oct 9, 1791
commons:Amalie Schoppe.jpg
wd:Q71563

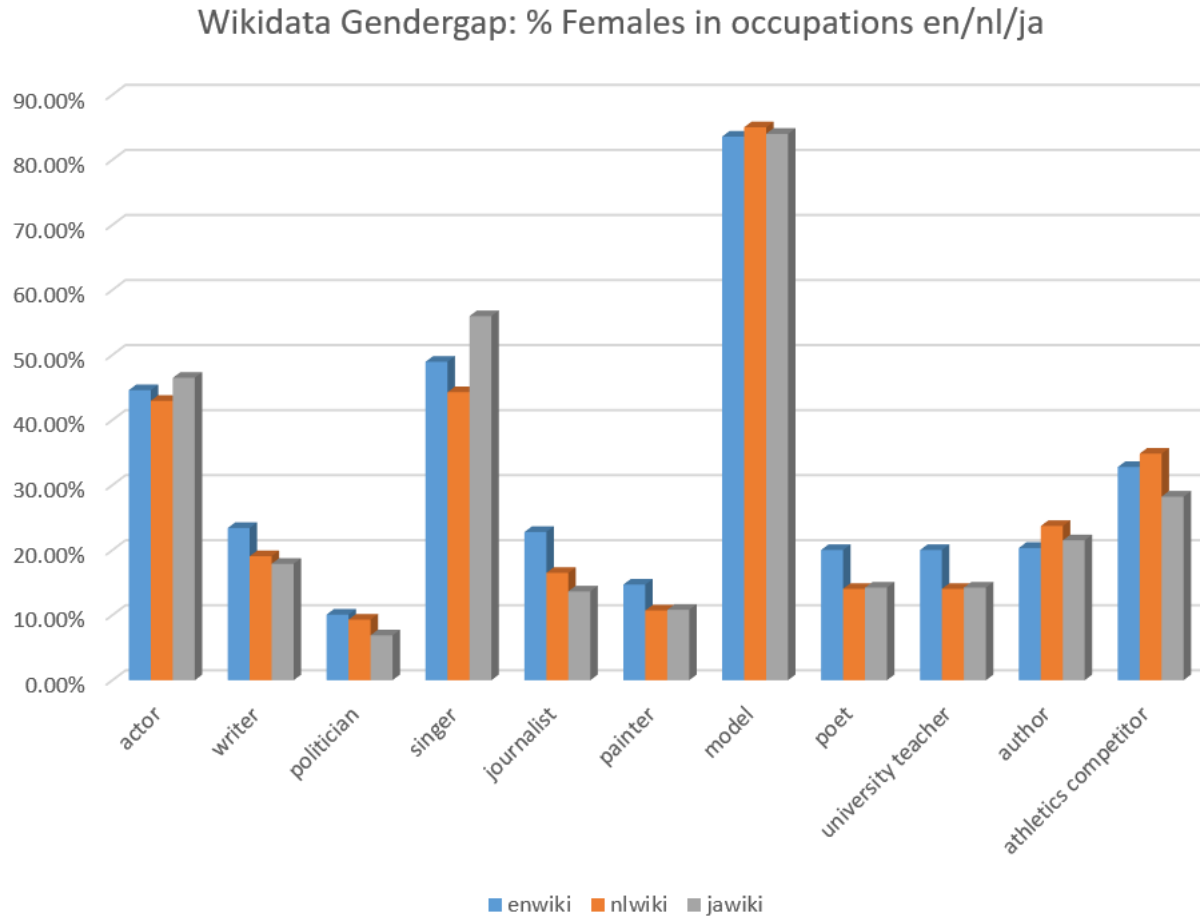


https://www.wikidata.org/wiki/Wikidata:WikiProject_Women

How can you help?

- Add paintings/sculptures depicting women to wikidata and add the P180 (depicts) property to existing portrait painting items
- Add publications about women to wikidata
- Add notable works (works, organizations, inventions) to women's items with P800
- Add categories and creator templates on Commons for women with images/notable works

%Female per group: occupation



https://www.wikidata.org/wiki/Wikidata:WikiProject_Women/Number_of_women_per_occupation