

117

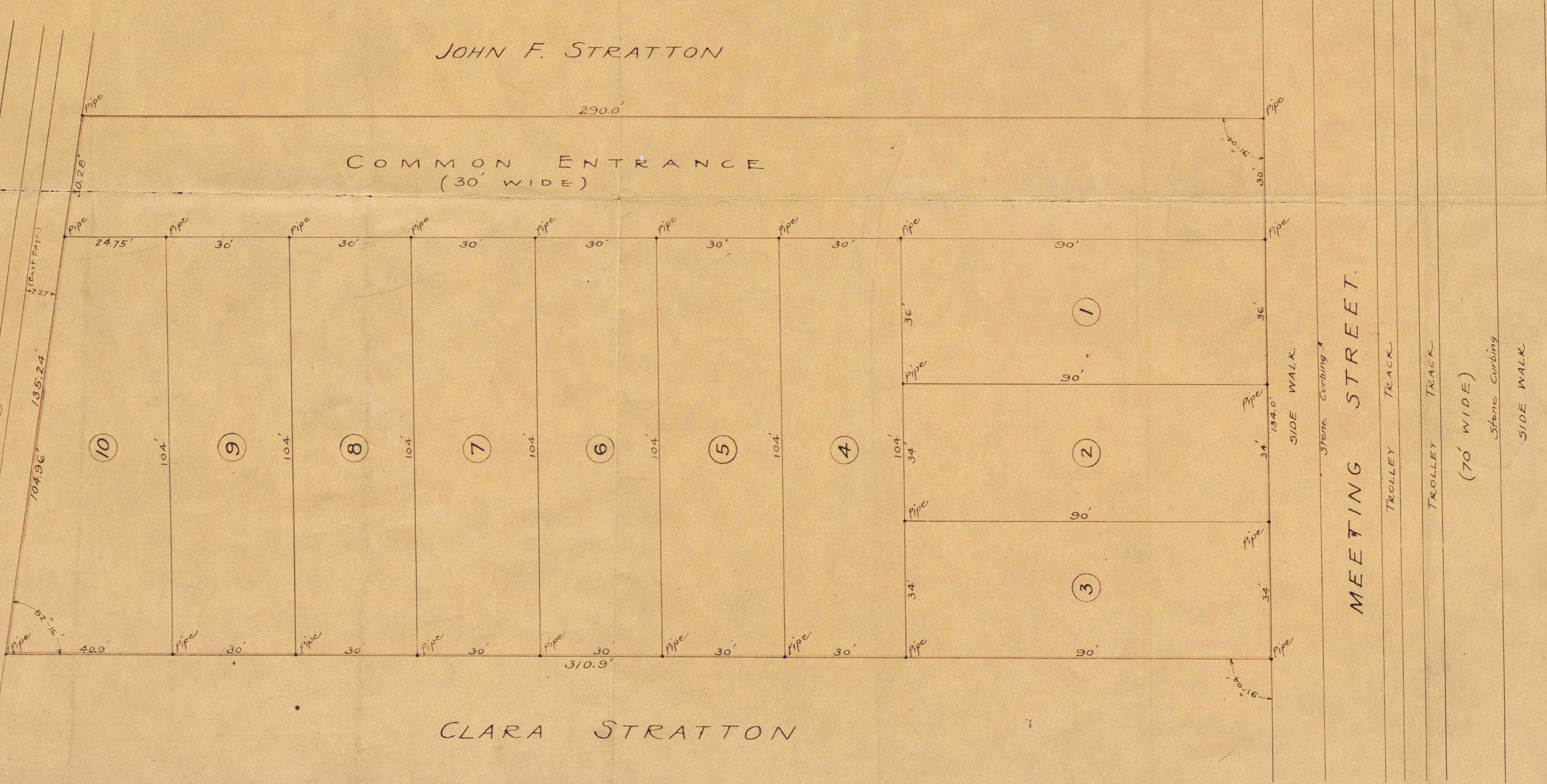
PLAT
OF
SUBDIVISION OF PROPERTY OF
THE HAMETIC CORPORATION
SITUATED ON WEST SIDE OF MEETING ST. BE-
TWEEN BRIGADE & MT. PLEASANT STS., CHARLESTON, S.C.
SURVEYED BY
McCRADY BROS. & CHEVES
CIVIL ENGINEERS CHARLESTON, S.C.
DEC. 13, 1919
SCALE: 1 INCH = 20 FT.

AUTHORITY :-
PLAT BY THADIVS SOBIESKI, DATED JUNE 20, 1817
PLAT BY G.M. HOWE, DATED FEB. 7, 1917.
PLAT BY G.M. HOWE, DATED MARCH 10, 1919.

JOHN F. STRATTON

LENOX ST.

R.R. TRACK
SOUTHERN RAILWAY PROPERTY
R.R. TRACK
R.R. TRACK



CLARA STRATTON

MEETING STREET.

TROLLEY TRACK
TROLLEY TRACK
(70' WIDE)
Stone Curbing
SIDE WALK

657