

C
M89 H
1895-8

THE LIBRARY
OF THE
UNIVERSITY OF ILLINOIS

CATALOGUE
OF
MUHLENBERG COLLEGE
FOR THE
COLLEGIATE YEAR, ENDING JUNE, 1886.

MUHLENBERG COLLEGE.

Allentown, Pa., June, 1886.

DEAR SIR:—

We send you this circular for the purpose of enlisting your special interest and securing your hearty co-operation with us in our efforts to promote the cause of higher Christian education, and the welfare of Muhlenberg College as an important means to this end.

We kindly submit the following suggestions as to the methods by which you can most efficiently aid this cause :

1. Ask God's blessing upon it.
2. Speak a good word for it.
3. Divide a portion of your goods with it. Let it be in either of the following forms :

A. A personal contribution to its Current Fund.

B. A personal contribution to its Endowment Fund.

C. The purchase of a \$1000 Scholarship

D. The Endowment of a Professorship.

E. The appointment of a "College Day" in your congregation, to be annually observed by the presentation of the cause of higher Christian education and the wants of the College, and by the offering of the prayers and gifts of the people in its behalf.

The following congregations have appointed and observed such a "Day" in the order given below :

Trinity Church.....	Leighton.
Lutheran Congregation.....	Freemansburg.
St. John's.....	Howertown.
St. John's.....	Bath.
St. Paul's.....	South Easton.
Salem.....	Bethlehem.
St. Paul's.....	Wikes-Barre.
St. John's.....	Allentown.
New Jerusalem.....	Leithsville.
Moorestown.....	Moorestown.
Stone Church.....	Kreidersville
St. Pau's.....	Upper Saucon.
Bensalem.....	Rev. W. H. Strauss, Pastor.
Zion's.....	“ “ “

St. John's.....	Rev. W. H. Strauss, Pastor.
St. Peter's.....	“ “ “
Grace Mission.....	Sand Cut.
St. John's.....	Rev. J. J. Kuntz, Pastor.
Shellhammer's.....	“ “ “
Frieden's.....	“ “ “
St. John's.....	Slatington.
St. Peter's.....	South Bethlehem.
St. Paul's.....	Summit Hill.
Smithfield Charge.....	Rev. T. Heilig, Pastor.
Treverton Charge.....	Rev. J. W. Early, Pastor.
Cherryville Charge.....	Rev. G. A. Bruegel, Pastor.
Salem.....	Lebanon.
Trinity Mission.....	Scranton.
Forks.....	Rev. D. Kuntz, Pastor.
St. Michael's.....	Allentown.
Trinity.....	Kutztown.
Trinity.....	Lancaster.
Zion's.....	Moselem.
Morgenland.....	Rev. O. Leopold, Pastor.
Weisenburg.....	“ “ “
Ziege's.....	“ “ “
St. John's.....	Mauch Chunk.
New Williams.....	Rev. C. E. Sandt, Pastor.

There are nearly 400 congregations, embracing 100,000 communicant members, in the Synod of Pennsylvania, and if in each, or even in a considerable number of the Churches, such a day were annually observed, it would greatly promote the cause of Christian education among the youth of Eastern Pennsylvania, tend to furnish an educated ministry and laity for our Churches, advance the interests of the College in every way, and the collections would aggregate a handsome amount for the current expenses and other objects of the Institution.

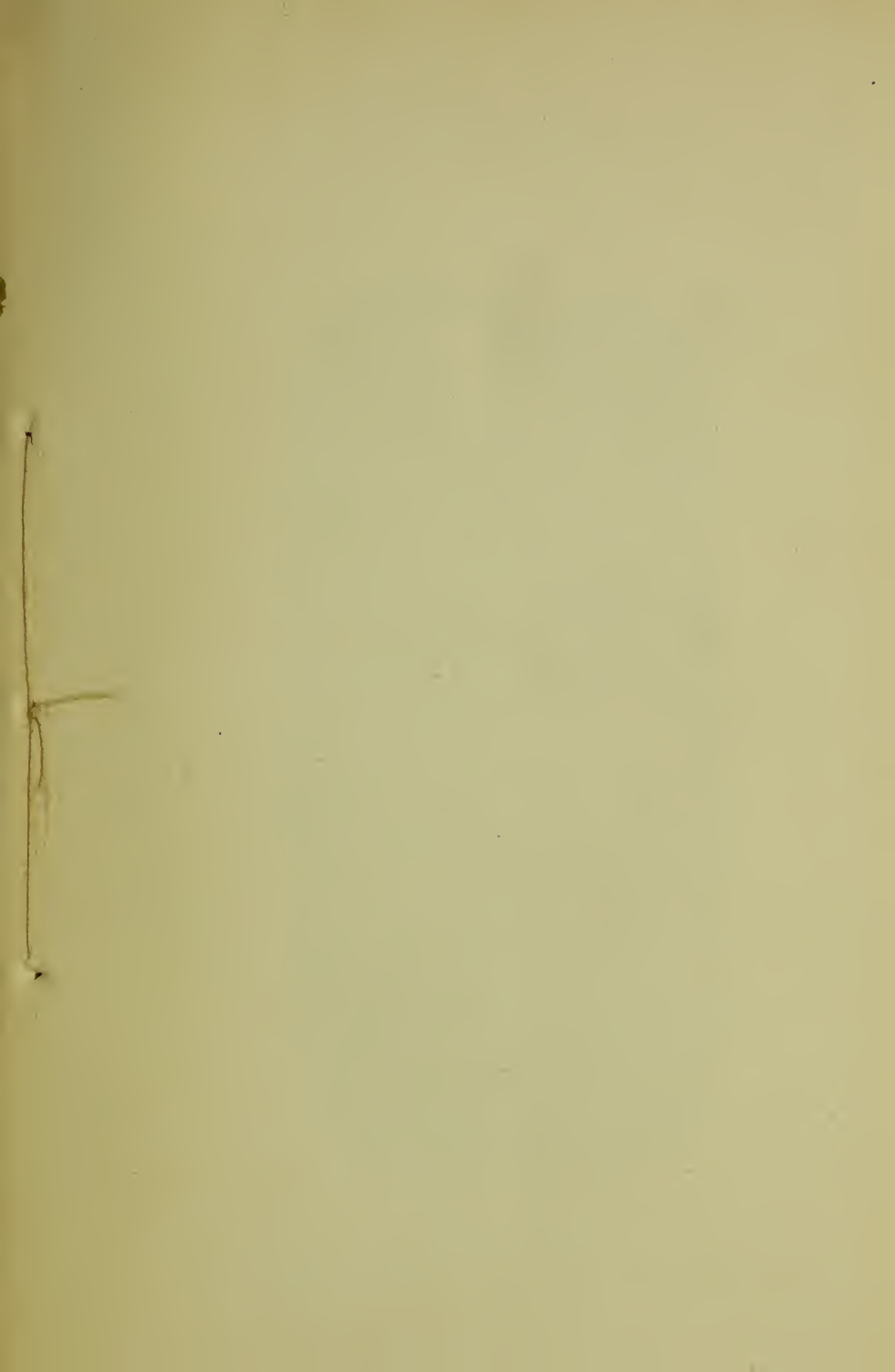
F. A personal effort on your part to secure students for the Institution by directing to it the attention of any youths known to you who may be induced to pursue a higher course of training, or may be already preparing for College. You will greatly aid us in our work if you will kindly look up such persons in your community and send us their names and Post Office addresses so that we may communicate with them.

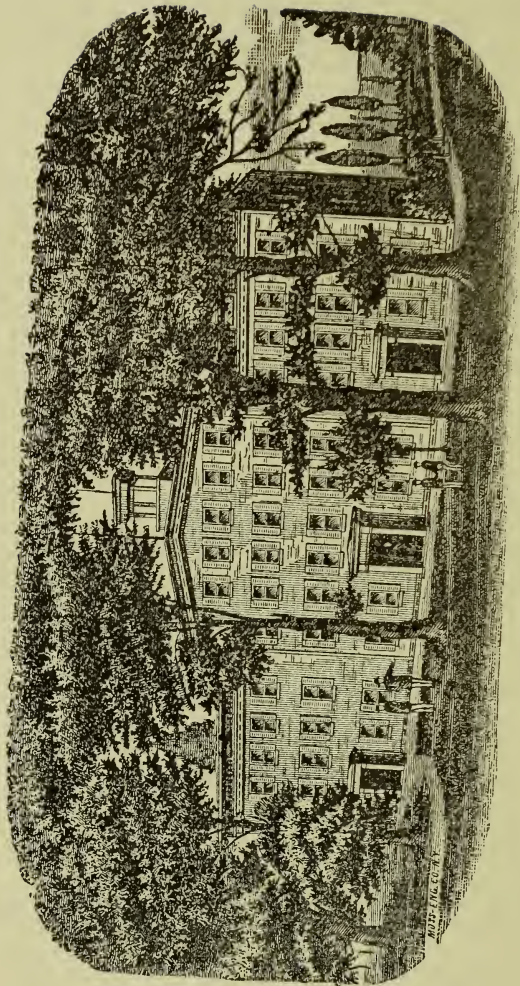
Correspondence is earnestly solicited and will be cheerfully attended to by either of the undersigned.

REV. T. L. SEIP, *President.*

REV. C. J. COOPER,

Treasurer and Financial Agent.





MUHLENBERG COLLEGE, ALLENTOWN, PA.

CATALOGUE
OF THE
OFFICERS AND STUDENTS
OF
MUHLENBERG COLLEGE,
ALLENTOWN, PA.,
FOR THE
COLLEGIATE YEAR, ENDING JUNE, 1886.

ALLENTOWN, PA. :
BROBST, DIEHL & CO., 732 HAMILTON STREET.

1886.

GRANT & FAIRES
PHILADELPHIA

COLLEGE CALENDAR 1885—1886.

1885.

- Sept. 3. First Term began.
Dec. 19. First Term ended.

CHRISTMAS VACATION.

1886.

- Jan. 6. Second Term began.
Feb. 11-12. Examinations.
April 14. Second Term ended.
April 15. Third Term began.
April 21-27. Easter Recess.
May 25-26. Final Examination of Senior Class.
June 15-16. Examination of lower classes.
June 20. Baccalaureate Sermon by the President, Rev.
Theodore L. Seip, A. M.
June 21-22. Examination for admission to Freshman Class.
June 23. Junior Exhibition.—Morning.
June 23. Address before the Alumni by Rev. William H.
Myers, A. M., of Reading, Pa.—Evening.
June 24. Commencement Exercises.—Morning.
June 24. Meeting of the Alumni.—Afternoon.

SUMMER VACATION.

- Sept. 2. First Term begins.
Dec. 22. First Term ends.

TRUSTEES.

REV. E. AUGUST BAUER,	Hazleton.
REV. CHARLES J. COOPER,	Allentown.
*CHARLES W. COOPER, ESQ.,	Allentown.
REV. JOHN W. EARLY,	Trevorton.
REV. I. N. S. ERB,	Orwigsburg.
ISAAC FEGLEY,	Pottstown.
HENRY A. GRIM, M. D.,	Allentown.
REV. GUSTAV A. HINTERLEITNER,	Pottsville.
REV. GEORGE F. KROTEL, D. D.,	New York.
REV. SAMUEL LAIRD,	Philadelphia.
HENRY LEHMAN,	Norristown.
JAMES K. MOSSER,	Allentown.
REV. JEREMIAH F. OHL,	Quakertown.
AMOS W. POTTEIGER,	Reading.
REV. WILLIAM RATH,	Allentown.
ALFRED G. SAEGER,	Allentown.
HON. EDWARD S. SHIMER,	Allentown.
CHARLES H. SCHAEFFER, ESQ.,	Reading.
REV. JOSEPH A. SEISS, D. D., LL. D.,	Philadelphia.
REV. BEALE M. SCHMUCKER, D. D.,	Pottstown.
REV. FRANKLIN J. F. SCHANTZ,	Myerstown.
REV. JACOB D. SCHINDEL,	Allentown.
REV. ENOCH SMITH,	Bethlehem.
REV. GEORGE F. SPIEKER,	Allentown.
A. STANLEY ULRICH, ESQ.,	Lebanon.
*HON. ROBERT E. WRIGHT,	Allentown.
HENRY WEINSHEIMER,	Allentown.
REV. JACOB F. WAMPOLE,	Freeburg.
REV. SAMUEL A. ZIEGENFUSS,	Bath.

* Deceased.

OFFICERS AND COMMITTEES.

REV. WILLIAM RATH, President of the Board.
 REV. JACOB D. SCHINDEL, Secretary of the Board.
 REV. CHARLES J. COOPER, Treasurer, Allentown, Pa.
 PROF. M. H. RICHARDS, Secretary of the Faculty, No. 394
 Union Street, Allentown, Pa.

CENTRAL EXECUTIVE COMMITTEE.

REV. WILLIAM RATH, President,
 REV. JACOB D. SCHINDEL, Secretary,
 REV. CHARLES J. COOPER,
 REV. GEORGE F. SPIEKER,
 REV. SAMUEL A. ZIEGENFUSS,
 HENRY A. GRIM, M. D.,
 REV. THEODORE L. SEIP,
 REV. ENOCH SMITH,
 JAMES K. MOSSER,
 ALFRED G. SAEGER,
 HON. EDWARD S. SHIMER.

EXAMINATION COMMITTEE.

REV. GEORGE F. SPIEKER,	HON. ROBERT E. WRIGHT,
REV. ENOCH SMITH,	HENRY WEINSHEIMER,
REV. CHARLES J. COOPER,	REV. JACOB D. SCHINDEL,
REV. SAMUEL A. ZIEGENFUSS.	

FACULTY AND INSTRUCTORS.

REV. THEODORE L. SEIP, A. M.,
PRESIDENT, PROFESSOR OF MENTAL AND MORAL SCIENCE,
AND MOSSER-KECK PROFESSOR OF GREEK.

DAVIS GARBER, A. M.,
PROFESSOR OF MATHEMATICS, ASTRONOMY AND METEOROLOGY.

*

PROFESSOR OF THE LATIN LANGUAGE AND LITERATURE.

REV. MATTHIAS H. RICHARDS, A. M.,
PROFESSOR OF THE ENGLISH LANGUAGE AND LITERATURE.

REV. WILLIAM WACKERNAGEL, D. D.,
PROFESSOR OF THE GERMAN LANGUAGE AND LITERATURE.

REV. JOHN A. BAUMAN, A. M.,
ASA PACKER PROFESSOR OF THE NATURAL AND APPLIED
SCIENCES.

SPECIAL LECTURERS FOR 1885-86.

REV. S. A. REPASS, D. D.,
"A PLEA FOR THE CHRISTIAN MINISTRY."

REV. GEORGE F. SPIEKER, A. M.,
SACRED PHILOLOGY.

WM. F. MUHLENBERG, A. M., M. D.,
HYGIENE.

* The duties of this department are discharged by the other Professors.

ALUMNI.

1868.

Ernest A. Muhlenberg, Esq., . . .	Philadelphia, Pa.
William F. Muhlenberg, M. D., . . .	Reading, Pa.
Rev. William H. Rickert,	Williamsport, Pa.
Prof. Luther A. Swope,	North Granville, N. Y.

1869.

Rev. George D. Foust,	North Wales, Pa.
Rev. Milton J. Kramlich,	Fogelsville, Pa.
Rev. Prof. Revere F. Weidner,	Rock Island, Ill.

1870.

Frederick W. Butler,	Reading, Pa.
Rev. Isaac N. S. Erb,	Orwigsburg, Pa.
Rev. Prof. William K. Frick,	St. Peter, Minn.
Rev. John J. Kuntz,	Conyngham, Pa.
Rev. William H. Kuntz,	Schuylkill Haven, Pa.
Rev. John W. Rumble,	Brooklyn, N. Y.
Rev. Samuel A. Ziegenfuss,	Bath, Pa.

1871.

Richard H. Beck, M. D.,	Hecktown, Pa.
John H. Garber,	Salinas City, Cal.
David S. Hoffman, M. D.,	Lake City, Colorado.
Charles H. Keller,	New York, N. Y.
Rev. Charles S. Kohler,	Catasauqua, Pa.
Prof. Benjamin F. Knerr,	Minneapolis, Minn.
Eugene C. Lochman, Esq.,	Jersey City, N. J.
Rev. Achilles J. Long,	Stouchsburg, Pa.
Rev. Jacob H. Neiman,	Catawissa, Pa.
Rev. Jeremiah F. Ohl,	Quakertown, Pa.
Rev. Hiram Peters,	Rochester, N. Y.
Rev. Oliver P. Smith,	Trappe, Pa.
Rev. Henry B. Strodach,	Brooklyn, N. Y.
*Henry Woodward, Esq.,	Philadelphia, Pa.

1872.

Rev. Prof. William A. Beates,	Lancaster, O.
Rev. D. Levin Coleman,	Centre Square, Pa.
Rev. Martin L. Fritch,	Reading, Pa.
Rev. Samuel W. Kuhns,	Columbus, O.
*Rev. William H. Laubenstein,	Tamaqua, Pa.
Rev. Alpheus D. Potts,	Pleasant Unity, Pa.
Rev. Myron O. Rath,	Allentown, Pa.
*Rev. George H. Rhodes,	Sand Cut, Pa.
Rev. J. George Schaidt,	Knoxville, Tenn.
Rev. John A. Scheffer,	Allentown, Pa.
Hon. William P. Snyder,	Allentown, Pa.
Horatio R. Trexler,	Reading, Pa.
*Rev. John M. Uhrich,	Pillow, Pa.
*Rev. George T. Weibel,	Churchtown, Pa.

1873.

Rev. Prof. John A. Bauman,	Allentown, Pa.
Harry P. Cooper,	Parryville, Pa.
Rev. Jesse S. Erb,	Slatington, Pa.
*Frank C. Erdman, M. D.,	Centre Valley, Pa.
Oscar S. Grim,	Allentown, Pa.
Rev. George H. Gerberding,	Jewett, Ohio.
Howard Himmelwright,	Loretto, Pa.
Rev. Charles J. Hirzel,	Chestnut Hill, Pa.
Charles B. Keller,	Strasburg, Pa.
George F. Kribbs, Esq.,	Clarion, Pa.
Prof. George G. Kunkle,	Weaversville, Pa.
Oscar Meyer,	Allentown, Pa.
Rev. William H. Myers,	Reading, Pa.
Rev. John Nicum,	Syracuse, N. Y.
Rev. Asher P. Pflueger,	Turbotville, Pa.
Prof. Francis D. Raub,	Allentown, Pa.
Rev. D. Luther Roth,	Butler, Pa.
Rev. Luther M. C. Weicksel,	Line Mountain, Pa.
Rev. Julius A. J. Zahn,	North Lima, O.

1874.

Rev. James L. Becker,	. . .	Sellersville, Pa.
Albert J. Erdman, Esq.,	. . .	Allentown, Pa.
Rev. Asa E. Erdman,	. . .	Nazareth, Pa.
David F. Eyster, Esq.,	. . .	Harrisburg, Pa.
Hon. Milton C. Henninger,	. . .	Allentown, Pa.
Oscar E. Holman, Esq.,	. . .	St. Paul, Minn.
Marcus C. L. Kline, Esq.,	. . .	Allentown, Pa.
Monroe T. Kuntz, M. D.,	. . .	Mulberry, Ind.
Alfred M. Koons, D. D. S.,	. . .	Allentown, Pa.
William A. Lichtenwallner, Esq.,	. . .	Harold, Dak.
James L. Schaadt, Esq.,	. . .	Allentown, Pa.
Adam H. Schmehl, Esq.,	. . .	Reading, Pa.
Prof. Edgar D. Shimer,	. . .	Jamaica, N. Y.
Rev. Jacob Q. Upp,	. . .	South Easton, Pa.

1875.

John W. Albrecht,	. . .	Toledo, Ohio.
Wilson S. Berlin, M. D.,	. . .	Allentown, Pa.
Rev. Jonas P. German,	. . .	Berwick, Pa.
Rev. Charles H. Hemsath,	. . .	Adamsburg, Pa.
Rev. Newton J. Miller,	. . .	Rebersburg, Pa.
Rev. William A. Passavant, Jr.,	. . .	Pittsburg, Pa.
Edwin H. Stine, Esq.,	. . .	Allentown, Pa.

1876.

Charles F. Camp, Esq.,	. . .	Wilkesbarre, Pa.
Rev. Henry T. Clymer,	. . .	Seven Valley, Pa.
Constantine D. Kiehel, Esq.,	. . .	Rochester, N. Y.
Rev. Jeremiah H. Kline,	. . .	Middagbis, Pa.
Frank E. Meily, Esq.,	. . .	Lebanon, Pa.
Rev. Solomon E. Ochsenford,	. . .	Selinsgrove, Pa.
Henry M. Muhlenberg, Ph. G.,	. . .	Germantown, Pa.
John M. Smeltzer,	. . .	Crosskill Mills, Pa.
John D. Uhrich, Esq.,	. . .	Allentown, Pa.

1877.

Rev. William J. Bieber,	. . .	Hellertown, Pa.
Prof. Michael A. Gruber,	. . .	Bernville, Pa.

Jacob F. Losch, Esq.,	Clear Creek, Neb.
Rev. William J. Miller,	Leechburg, Pa.
Rev. Prof. John Sander,	St. Peter, Minn.
Rev. William P. Shanor,	West View, Pa.
George M. Van Buskirk, Esq.,	Pottstown, Pa.
Rev. M. Luther Zweizig,	Scranton, Pa.
1878.	
Rev. Charles L. Fry,	Lancaster, Pa.
Preston M. Gernert, Esq.,	Easton, Pa.
Henry H. Herbst, M. D.,	Wilmington, Del.
Rev. Frederick W. Kohler,	Irwin Station, Pa.
Hiram P. Kuntz,	Jeddo, Pa.
Rev. D. Henry Reiter,	Richland Centre, Pa.
Prof. Oliver G. J. Schaadt,	Germantown, Pa.
Rev. Daniel A. Shetler,	Saddle River, N. J.
Emerson F. Schock, Esq.,	Allentown, Pa.
Rev. James D. Woodring,	Philadelphia, Pa.
1879.	
Rev. Charles N. Conrad,	Rochester, N. Y.
Rev. Julius W. Knapp,	Lancaster, N. Y.
George D. Krause,	Lebanon, Pa.
Edwin J. Lichtenwallner, Esq.,	Allentown, Pa.
Rev. Wilson M. Rehrig,	Girardville, Pa.
John K. Reinoehl, M. D.,	Lebanon, Pa.
Alfred J. P. Roth,	Allentown, Pa.
Rev. Charles S. Seaman,	Renovo, Pa.
Rev. George S. Seaman,	Elizabethtown, Pa.
George B. Schock, Esq.,	Lebanon, Pa.
Frank M. Trexler, Esq.,	Allentown, Pa.
Rev. John N. Wetzler,	Ringgold, Pa.
1880.	
Rev. James F. Beates,	Lancaster, O.
Prof. George T. Ettinger,	Allentown, Pa.
Jonas F. Kline, Esq.,	Allentown, Pa.
Rev. J. Walker Klinger,	Mt. Bethel, Pa.
Marvin O. Koons,	Leighton, Pa.
Benjamin Sadtler, B. S.,	Pueblo, Col.

Robert W. Steckel,	Allentown, Pa.
Rev. Solomon B. Stupp,	Ono, Pa.
Rev. John H. Umbenhen,	Reamstown, Pa.
Rev. Wilson Yeisley,	Baltic, O.

1881.

Rev. Thomas M. Angstadt,	Mahone Bay, N. S.
Rev. Clayton L. Holloway,	Richmond, O.
*William F. Kistler,	Fort Quitman, Texas.
David J. M. Kuntz, Esq.,	Nazareth, Pa.
Rev. Joseph W. Mahn,	Dublin, Pa.
Rev. Luther M. McCreery,	Middlepoint, O.
Rev. Oscar D. Miller,	Hamburg, Pa.
Frank H. Reinoehl,	Lebanon, Pa.
Rev. Charles E. Sandt,	Allentown, Pa.
J. Allen Schaadt,	Philadelphia, Pa.
James T. Woodring, Esq.,	Hellertown, Pa.
Rev. Frank H. Uhrich,	Myerstown, Pa.

1882.

Rev. Lewis J. Bickel,	Reading, Pa.
Austin A. Glick, Esq.,	Catasauqua, Pa.
William R. Grim,	Boyertown, Pa.
Aaron B. Hassler, Esq.,	New Holland, Pa.
Rev. Andrew J. Heissler,	Utica, N. Y.
David R. Horne, Esq.,	Allentown, Pa.
Rev. Jacob W. Lazarus,	Allentown, Pa.
Rev. William H. Medlar,	Brainard, Minn.
Rev. Edwin L. Miller,	Doylestown, Pa.
Noah W. Reichard,	Delabole, Pa.
Horace Reiter,	Asten, Neb.
Rev. Robert D. Roeder,	Norristown, Pa.
Prof. Samuel C. Schmucker,	Reading, Pa.
Rev. Edwin H. Smoll,	Millersville, Pa.
Oscar J. Stine,	Allentown, Pa.
Rev. Thomas M. Yundt,	Womelsdorf, Pa.
Prof. J. Henry Zweizig,	Poughkeepsie, N. Y.

1883.

Jacob J. G. Dubbs,	New Haven, Conn.
John J. Foust,	Allentown, Pa.
John C. Graepp,	Rockville, Conn.
M. Luther Horne,	Allentown, Pa.
Francis Kayser,	Philadelphia, Pa.
Charles E. Keck,	White Haven, Pa.
John J. Kline,	Myerstown, Pa.
Dexter L. Rambo,	Thomaston, Texas.
Jeremiah H. Ritter,	South Bethlehem, Pa.
William A. Sadtler,	Philadelphia, Pa.
James O. Schlenker,	Philadelphia, Pa.
R. Morris Smith,	Philadelphia, Pa.
William F. Schoener,	Allentown, Pa.
Irwin S. Uhler,	Stockertown, Pa.

Graduated with the degree of B. S., Benjamin Sadtler, A. M.,
'80, Pueblo, Col.

Graduated with degree of Ph. D., Prof. N. Wiley Thomas, B. S.,
Philadelphia, Pa.

1884.

Milton W. Bohn,	State College, Pa.
Alfred J. L. Breinig,	Egypt, Pa.
John M. Dettra,	Norristown, Pa.
Albert B. Erb,	Pottstown, Pa.
William J. Finck,	Wilmington, Del.
John J. Heissler,	Wilkes-Barre, Pa.
William D. C. Keiter,	Allentown, "
Elmer F. Krauss,	Gerysville, "
Hiram J. Kuder,	Leighton, "
James O. Leibensperger,	Maxatawny, "
Oscar E. Pflueger,	Allentown, "
James J. Reitz,	Lynnport, "
George J. Schaeffer,	Emaus, "
George M. Scheidy, B. E.,	Allentown, "
Jacob W. Uhrich,	Grantville, "
Valentine J. Uhrich,	Grantville, "
C. Ernest Wagner,	Allentown, "

Samuel G. Weiskotten, Syracuse, N. Y.
 William H. Zuber, Pottstown, Pa.
 Graduated with the degree of B. S., Samuel C. Schmucker, class
 of '82, Reading, Pa.; Ira Wise, Allentown, Pa.

1885.

Charles C. Boyer, Lynnport, Pa.
 Daniel E. Brunner, Reading, "
 Frank F. Fry, Reading, "
 C. F. William Hoppe, Rochester, N. Y.
 Elmer E. Johnson, North Wales, Pa.
 Francis G. Lewis, Bethlehem, Pa.
 Robert B. Lynch, Pennsburg, "
 A. Miles Mehrkam, Little Gap, "
 Wilson K. Mohr, Allentown, "
 Howard S. Seip, Allentown, "
 Adam M. Weber, Bernville, "
 William Weicksel, Line Mountain, Pa.
 Elias A. Yehl, Rock Dale, Pa.

Alumni, 208.

* Deceased.

SENIORS.

Forrest M. Fox, Sumneytown, Pa.
 Charles W. Jefferis, Germantown, "
 Edwin F. Keever, Reading, "
 Samuel J. Kistler, Jr., Saegersville, "
 Elmer P. Kohler, Egypt, "
 Ernest T. Kretschmann, Germantown, "
 A. Grant Loder, Philadelphia, "
 John F. Nicholas, Butztown, "
 Samuel N. Potteiger, Reading, "
 George A. Prediger, Pittsfield, Mass.
 Elmer O. Reyer, Stemton, Pa.
 Nelson F. Schmidt, Freeland, "
 J. Jeremiah Snyder, Allentown, Pa.

John H. Waidelich,	Steinsville, Pa.
Henry W. Warmkessel,	Maxatawny, "
Harry K. Weaver,	New Holland, Pa.

Seniors, 16.

JUNIORS.

James R. Brown,	Allentown, Pa.
Raymond E. Butz,	Allentown, "
Reuben J. Butz,	Allentown, "
Preston R. Dry,	Drysville, "
Tilghman F. German,	Allentown, "
Milton J. Kuehner,	Germansville, Pa.
William W. Kramlich,	Kutztown, "
George A. Miller,	Allentown, "
George W. Richards,	Maxatawny, "
John W. Richards,	Allentown, "
Clinton J. Schadt,	Coplay, "
George E. Schettler,	Clarence Centre, N. Y.
Frank M. Seip;	Allentown, Pa.

Juniors, 13.

SOPHOMORES.

William F. Bond,	Lenhartsville, Pa.
Charles D. Clauss,	Lehighon, "
Clinton Fetter,	Telford, "
George Gebert,	Sumneytown, "
David G. Gerberich,	Ono, "
Alfred W. Kistler,	Kempton, "
James F. Lambert,	Seidersville, "
Ralph Metzger,	Allentown, "
Edward F. Ritter,	Freemansburg, "
Harry F. Schantz,	Myerstown, "
Oscar S. Scheirer,	Hokendauqua, "
John M. Wenrich,	Blainesport, "

Sophomores, 12.

FRESHMEN.

Guernsey F. Coleman,	Limerick, Pa.
Edwin H. Eberts,	Bingen, "
James F. Fry,	Allentown, "
Ernest M. Grahm,	Philadelphia, "
Willis J. Hassler,	Allentown, "
John B. Heil,	Saegersville, "
John H. Johnson,	Limerick, "
Wyatt M. Keedy,	Hagerstown, Md.
Preston Laury,	Hellertown, Pa.
Elmer O. Leopold,	Fogelsville, "
*Samuel S. Moyer,	Allentown, "
Frank C. Oberly,	Catasauqua, "
John H. Raker,	Raker, "
Ezra Rath,	Allentown, "
Elmer E. Schantz,	Geryville, "

Freshmen, 15.

* Irregular.

STUDENTS OF THE ACADEMIC DEPARTMENT.

Reuben E. Bachman,	Stemton, Pa.
Robert J. Berger,	Allentown, Pa.
William H. Cooper,	Allentown, Pa.
Jacob F. Dieter,	Carbon, Pa.
John H. Dubbs,	Allentown, Pa.
Robert L. Dubbs,	Allentown, Pa.
Harvey Erney,	Mountainville, Pa.
Clinton J. Everett,	Rockdale, "
Elmer H. Fatzinger,	East Allentown, "
Frank J. A. Fatzinger,	Schoenersville, "
Richard J. Flexer,	Allentown, "

William L. Flowers,	Allentown, Pa.
Jonathan E. Frederick,	Allentown, "
Alfred J. George,	Allentown, "
David J. Gimlich,	Pittsfield, Mass.
Ezra J. Glick,	East Hanover, Pa.
M. F. Hawk,	Allentown, "
Samuel Hayden,	Allentown, "
Armin F. Herrmann,	Allentown, "
J. Mosheim Hoffman,	Allentown, "
Joseph Howell,	Siegfried's, "
Henry H. Hower,	Cherryville, "
Sidney Isett,	Spruce Creek, "
Homer Kemmerer,	Mountainville, "
Victor S. Kemmerer,	Allentown, "
John H. Kleckner,	Allentown, "
Myron C. Kline,	Aineyville, "
Oscar W. Kuntz,	Allentown, "
Calvin H. Lazarus,	Egypt, "
William H. Lindeman,	Bath, "
Reginald H. Longnecker,	Allentown, "
Sylvanus Peters,	Siegfried's, "
Godfrey J. Pretz,	Allentown, "
Ivan L. Ranck,	New Holland, "
Milton M. Reinhard,	Allentown, "
Alvin P. Reitz,	Raker, "
Irwin B. Ritter,	Breinigsville, "
John Ritter,	Guth's Station, "
Henry S. Ritter,	Ballietsville, "
Preston P. Rodenberger,	Limeport, "
Samuel J. Ruhe,	Allentown, "
John F. Saeger,	Allentown, "
Carl Schlenker,	Toledo, Ohio.
Martin G. Sheaffer,	Bareville, Pa.
Joseph P. Shimer,	Allentown, "
Charles C. Snyder,	Sellersville, "
Charles W. Snyder,	Allentown, "
Harry S. Snyder,	Allentown, "

Harvey L. Snyder,	Zionsville, Pa.
Quintus Snyder,	South Bethlehem, Pa.
Edward A. Soleliac,	Allentown, Pa.
Albert Steckel,	Allentown, “
Harvey N. Stem,	Stemton, “
Titus Troxell,	Siegfried’s, “
Joseph D. Wagner,	Raker, “
Harvey Weaber,	Allentown, “
Samuel R. Weaver,	Blue Ball, “
Simon Wenrich,	Dushore, “
Fred. C. White,	Pittsfield, Mass.
Edwin W. Wieser,	Allentown, Pa.
Leo Wise,	Allentown, “
George L. Wolf,	Allentown, “
Alfred J. Yost,	Mountainville, Pa.
Academics, 63.	

SUMMARY.

Seniors,	16
Juniors,	13
Sophomores,	12
Freshmen,	15
Academics,	63
<hr/>	
Total Number,	119

COLLEGE.

TERMS OF ADMISSION.

Candidates for admission to the Freshman Class must sustain an examination in the Greek Grammar, Greek Reader or three books of the Anabasis, Latin Grammar, three books of Cæsar, three books of Virgil, Orthography, Etymology and Syntax of the English Language, together with the pronunciation and defining of words, History of the United States, Ancient and Modern Geography, Arithmetic, Elementary Algebra, and Geometry to circles.

It is desirable that the applicant for admission should have some acquaintance with the grammatical forms of the German Language.

A candidate for an advanced standing, in addition to the above requirements, must sustain a satisfactory examination in the various branches to which the class he proposes to enter has attained.

An accurate and thorough acquaintance with the studies required for admission is indispensable in order to receive full advantage of the College course. A very important year in an education is the one preceding admission to College, and upon the fidelity of tutor and student then will largely depend the success of the latter, in attaining to a scholarship that shall be exact and comprehensive.

No student will be received whose moral character is not known or attested to be good, and those coming from other institutions must bring certificates of regular and honorable dismissal.

COURSE OF INSTRUCTION.

FRESHMAN CLASS.

Greek.—Xenophon's Anabasis or Hellenica (Goodwin). Greek Prose Composition (Arnold). Greek Grammar (Goodwin).

Latin.—Cicero's Orations (Allen and Greenough). Livy's History (Chase and Stuart). Latin Prose Composition (Allen). Latin Grammar (Allen and Greenough).

German.—Grammar (Whitney-Klemm). Wackernagel's Reader I. Declamations and Exercises in Writing.

English.—Rhetoric—Invention, Style, Delivery. English Philology. English Prose Authors (Hudson). Essays. Declamations.

History.—Ancient History of the East (Smith). Scripture History (Smith). Biblical Antiquities (Nevin). Outlines of History (Swinton).

Mathematics.—Algebra (Robinson's University). Geometry (Wentworth).

Physiology.—Hutchinson.

Zoology.—Orton.

SOPHOMORE CLASS.

Greek.—Plato's Apology and Crito (Wagner). Greek New Testament. Greek Prose Composition (Arnold). Etymology of Latin and Greek (Halsey).

Latin.—The Odes and Epodes of Horace (Chase and Stuart). Cicero's Tusculan Disputations (Chase and Stuart). Latin Prose Composition (Allen).

German.—Grammar (Otto). Wackernagel's Reader II. Declamations. Oral and Written Translations into German.

English.—History of English Literature. Anglo-Saxon (Carpenter). Piers Plowman. Essays. Declamations.

History.—History of Greece (Leighton). History of Rome (Leighton). Sacred History (Kurtz).

Mathematics.—Solid and Spherical Geometry (Wentworth).
Plane and Spherical Trigonometry (Robinson). Mensuration,
Surveying, Conic Sections, Analytical Geometry (Robinson).

Physics.—Atkinson's Ganot.

Botany.—Wood.

JUNIOR CLASS.

Mental Philosophy.—Haven.

Natural Theology.—Valentine.

Greek.—Homer. Prometheus, or Agamemnon of Aeschylus, or Alcestis of Euripides, or the Oedipus Tyrannus of Sophocles. Greek and Roman Literature and Biography.

Latin.—Satires, Epistles and Ars Poetica of Horace. Cicero de Oratore, or Cicero de Natura Deorum (Chase and Stuart). Original Latin Prose Composition.

German.—Wackernagel's Reader III. Declamations. Oral and Written Translations. Essays.

French Course Optional.

English.—Logic (Jevons-Hill). Political Economy (Bowen). Chaucer. Spenser. Original Speeches. Extemporaneous Debates. Dissertations.

History.—History of England (Green). History of Germany (Bayard Taylor). Outlines of Church History (Hurst).

Mathematics.—Differential and Integral Calculus (Loomis).

Chemistry.—Avery's Complete Chemistry with Experiments. Plympton's Guide to Use of Blowpipe.

Mineralogy and Lithology.—Dana's Manual.

SENIOR CLASS.

Moral Philosophy.—Gregory.

Evidences of Christianity.—Paley.

Analogy of Religion.—Butler.

Catechism.—Luther.

History of Civilization.—Guizot.

Science of Government.—Alden.

Greek.—Phædo of Plato (Wagner). Demosthenes, or Aeschines on the Crown. The Antigone, or Ajax of Sophocles. Greek and Roman Archæology.

Latin.—Tacitus. Juvenal. Persius. Plautus or Terence. Original Latin Prose Composition. Greek and Roman Archæology.

German.—Schiller's William Tell. Goethe's Hermann und Dorothea, and Iphigenia. History of Literature. Translations from Longfellow, etc. Essays. Speeches and Debates.

French Course Optional.

English.—Shakespeare. Milton. History of American Literature. Original Speeches. Extemporaneous Debates. Dissertations.

Mathematics.—Astronomy (Newcomb and Holden). Meteorology (Loomis).

Geology.—Le Conte.

DEPARTMENT OF NATURAL AND APPLIED SCIENCES.

The work of this department commences with the lower classes, and is so arranged as to prepare the student for a thorough understanding and appreciation of the studies of the Junior and Senior years. The subjects are illustrated as fully as a general course will permit. The physical apparatus suffices to demonstrate the subjects of Light and Electricity. Donations to this department are very much desired.

A cabinet of over three hundred minerals allows of a very fair course upon the subject of Mineralogy. The class-room work is supplemented with a complete course in Blow-pipe Mineralogy, and field work is prosecuted during those periods of the year favorable to it.

The course in Crystallography consists in the close study of a complete set of models and natural minerals. The course in General Chemistry is fully illustrated by experiments, which are made a prominent feature. Geology is taught with a text book and by the study of a very good geological collection.

 CLASS PRIZES.

During the year the following prizes have been announced, competition for which is subject to the rules of the Faculty, and the assigning of which is in the hands of committees appointed for this purpose. The decisions will be announced on Commencement Day. Friends of the Institution are urged to increase the number of these prizes, especially for the lower classes.

FOR THE SENIOR CLASS.

The "*Amos Ettinger Honor Medal*," to be assigned to that member of the class having attained the highest average grade during the year, in all his studies. Presented by Prof. Geo. T. Ettinger ('80).

The "*Butler Analogy*" Prize.—Twenty-five dollars to that member of the class standing the best in a competitive examination upon Butler's Analogy. Presented in the name of the brothers Rev. C. L. ('78) and Frank F. Fry ('85).

FOR THE JUNIOR CLASS.

The "*Oratorical Contest*" Prize.—Twenty-five dollars to that member of the class making the best speech, as to manner and matter, at the Junior exhibition. Presented by members of the Alumni Association.

The "*German*" Prize.—A gift of suitable books for the best essay, and examination upon the same on an assigned subject.

FOR THE SOPHOMORE CLASS.

The "*Eliza*" Prize.—Fifteen dollars to be awarded for the best essay on "The Reproduction of Plants," and a herbarium of twenty-five specimens illustrating the essay. Given by Rev. W. A. Passavant, Jr., ('75).

The "*German*" Prize.—A gift of suitable books for the best essay, and examination upon the same.

The "*Scientific*" Prize.—Fifteen dollars to be awarded for the best standing in examination upon some scientific subject connected with the studies of the year. Given by a friend whose name is withheld.

FOR THE FRESHMAN CLASS.

The "German" Prize.—A gift of suitable books for the best essay upon an assigned subject, on examination upon the same.

The "German" Prizes are the gifts of friends of the Institution.

EXPENSES.

COLLEGE CHARGES FOR THE SCHOLASTIC YEAR.

Tuition,	\$50 00
Room Rent,	10 00
Fuel,	8 00
Contingent Fee,	3 00
	—————\$ 71 00
Board, washing and light, about \$3 per week,	120 00
	—————
Total,	\$191 00

As the scholastic year of forty weeks is divided into three terms of sixteen, fourteen and ten weeks, the above charges will be divided accordingly.

The College charges of each term must be paid in advance, or satisfactory arrangements made with the Treasurer to secure payment.

The members of the Senior Class, at the beginning of the Third Term, pay an extra fee of five dollars to the Treasurer, which will be refunded in case of failure to obtain the degree of Bachelor of Arts.

All students will furnish their own rooms.

Students may board in town, but only at *private* boarding houses approved by the Executive Committee and Faculty.

No deduction will be made for the absence or premature withdrawal of a student from the institution, unless occasioned by protracted sickness.

ORIGIN OF THE INSTITUTION.

This Institution was founded in 1867 by a number of gentlemen, chiefly members of the Evangelical Lutheran Church.

Animated by the desire of establishing a College for the higher education of young men, under auspices that should secure their religious and moral, as well as intellectual culture, they formed themselves into a joint stock company and secured a charter for a College. They resolved to call it Muhlenberg College, after the honored patriarch of the Lutheran faith in this country. Subsequently the Institution, by surrender of its stock and with a charter amended by the proper Court, was put under the direct control of the Evangelical Lutheran Ministerium of Pennsylvania and adjacent States. Its trustees are elected by this body.

LOCATION.

Allentown is beautifully located upon high ground, a short distance above the confluence of the Jordan creek and the Lehigh river, fifty-nine miles north of Philadelphia. Few locations combine in a more eminent degree the advantages of accessibility, healthfulness, beautiful surroundings and quietness for the purpose of study.

The city has frequent and direct communication with New York, Philadelphia, Harrisburg and the West, and, by the local railroads intersecting here, ready access to all parts of the surrounding country.

THE BUILDINGS.

The buildings of the institution are situated in the southeastern part of the city, surrounded by about five acres of ground, devoted to its exclusive use. The accommodations for lodging the students are of the most approved character, each room being intended for two persons, having alcoves for single beds. The rooms are well ventilated, abundantly furnished with light, and command beautiful prospects on every side, whilst the arrangements for cleanliness are ample.

The Chapel, Library, Recitation and Reading-rooms are within the College building.

GOVERNMENT.

The government is firmly but kindly administered, and is intended to be parental in its character. No unnecessary or arbitrary regulations will be introduced, but good order, obedience, and a general propriety of deportment will be strenuously insisted upon, and no one persistently disobedient, or pernicious in his influence, will be retained upon any condition.

An entrance into the Institution is considered an agreement, in good faith, to abide by its rules and regulations, and expulsion necessitated by disobedience or immorality, a forfeiture of its advantages. It will, however, be the object of the officers and instructors, by their frequent presence and friendly relations with the students, to avoid, if possible, the severer forms of discipline.

MORAL TRAINING.

The moral and religious training of youth is regarded as a most important part of their education, and nothing can atone for its neglect. For this purpose the Scriptures are daily read at morning prayers in the Chapel, and especial pains are taken to awaken an interest in their sacred pages, to mould character by their hallowed influence, and to imbue every heart with noble, generous, and Christian principles. Regular instruction in Religion is included in the course of studies for the several classes. On the Lord's day attendance upon public worship is required. The sanctity of the Lord's day, attendance upon religious duties, and correctness of deportment and politeness of demeanor will be strictly insisted upon.

SCHOLARSHIPS.

Any individual or congregation contributing \$1000 to the College, will receive a permanent scholarship, which secures to the contributor, his assigns, etc., the perpetual right of educating

one student in the Institution, free of expense for tuition. About thirty individuals have thus far purchased scholarships.

The churches holding one or more are : St. John's, of Allentown ; Emmanuel's, of Pottstown ; St. James', of Reading ; Trinity, of Reading.

St. John's English Reformed Church, of Allentown, owns the FRANK ERDMAN COOPER scholarship, given to it by C. W. COOPER, ESQ., in memory of his son, who at the time of his death was a student of the institution.

The HENRY MELCHIOR MUHLENBERG scholarship was endowed by Mrs. Mary A. Rogers, and Mrs. Bailey and her son, of New York, in honor of their ancestor, the Patriarch of the Lutheran Church in this country.

ROBERT H. SAYRE, ESQ., of Bethlehem, Pa., has, recently, added a scholarship to the list of those already contributed to the Institution. The gift is gratefully acknowledged.

The Allentown High School scholarship, resulting from the sale of the "Old Academy" Property, and vested in the Public School Board of Control, of Allentown, is open annually to competition on the part of graduates of the High School, preference being given to members of the class most recently graduating. The choice is made by an especial competitive examination conducted by the Board of Control.

It is hoped that others will follow these examples, and take individual, memorial or congregational scholarships, as thereby, apart from educating one's own family, worthy and talented but poor young men may be aided in securing an education that may fit them for eminent usefulness, and the churches may have in perpetual training their sons, chosen for the work of the Gospel ministry.

THE DEGREE OF A. M.

The degree of Master of Arts may be conferred in course, on the *written* application of graduates of the College, of three years' standing, of good moral character, who have pursued liberal, professional, or scientific studies since graduation. When

such studies have not been the regular occupation during those years, satisfactory evidence shall be given of diligence in literary pursuits, and a written or printed thesis submitted for examination by the Faculty. This degree is conferred upon the nomination of the Faculty.

COLLEGE SOCIETIES.

There are two Literary Societies connected with the Institution, the Euterpean and Sophronian, each of which possesses a well selected library, and affords opportunity for improvement in Composition, Declamation and Debate. Students are required to join these, as their exercises form part of the College course.

COLLEGE DAY.

By resolution, many of our congregations have already set apart one Sunday in each year as "College Day," for the presentation of the interests of the Institution. May we not hope that this will become universal, and especially enlist the assistance of our alumni and friends, in furthering the endowment of the College and attracting students to it? Correspondence upon this matter is earnestly invited by the Faculty.

GENERAL REMARKS.

All the classes are examined twice a year, and a report is sent to the parents or guardians, not only of scholarship, but of general attendance and deportment during the term. They are respectfully requested to give these reports a careful examination. Their cordial co-operation in sustaining the rules of the Institution, in stimulating the industry and securing the cheerful and respectful obedience of their sons or wards, will greatly contribute to their improvement and permanent benefit.

A prompt attendance at the commencement of each term is of the utmost importance to the student. A want of punctuality seriously affects his standing in the Institution.

Absence from the Institution, during the term time, is discouraged and is permitted only upon the written request of parent or guardian, with the consent of the President.

ENDOWMENTS, BEQUESTS, AND DEVISES.

The institution is yet in its comparative infancy and is far from being adequately endowed and fully equipped. It needs a larger corps of Professors, as well as an increased library and cabinet, and chemical and philosophical appliances, to conduct physical experimentation on a larger scale. This want has been partly met by endowments of various amounts secured in the past, and by the liberal gift of thirty thousand dollars by the late Hon. Asa Packer, in whose honor the Board of Trustees has named the Chair of Natural and Applied Science. Further relief was afforded by the generosity of Messrs. Mosser and Keck, who endowed the Professorship of the Greek Language and Literature. The institution earnestly appeals to the patriotism and Christian benevolence of the public for other benefactions, that all its chairs may be fully endowed, and its indebtedness removed. Abundant experience has proved that education is most valuable, when it includes the moral training of the student. The patriot and the Christian alike have an interest in Institutions that are fostering such an education. It is equally certain that Colleges can prosper only, when lifted above the contingencies of adverse times and commercial panics. Competent and efficient faculties of instruction cannot be gathered and scattered, as the business of the country prospers or declines. Permanent efficiency requires permanent endowment. It is hoped, therefore, that the friends of the church and of education will, from time to time, come to our relief with their liberal gifts. But there are those whose income is needed by themselves during life, but who, without injustice to any person or interest, could by their bequests advance the prosperity and widen the usefulness of the College. It is important that testamentary papers should be carefully drawn and regularly executed; and to give

our corporation name accurately, we append the following forms, respectively for personal property and real estate, and indicating whether the bequest is for endowment, or the general purposes of the College.

I give and bequeath to "The Trustees of Muhlenberg College," in Allentown, Pennsylvania, and to their successors and assigns forever, the sum of Dollars, to be safely invested by said corporation in good real estate security, and the interest accruing therefrom to be applied to the support of the Professors in said College.

I give and bequeath a certain lot, situated (here described) to "The Trustees of Muhlenberg College," in Allentown, Pennsylvania, and to their successors and assigns forever, for the uses and purposes of said College, according to the provisions of its charter.

DONATIONS.

THE CHAPEL.

Through the liberality of various friends, the College Chapel was thoroughly repaired and suitably beautified during the Spring of this year. The ceiling and walls have been frescoed, the seats repainted, a new organ purchased, the chancel and reading desk furnished afresh, and a new pulpit Bible provided. These repairs were extended, so far as painting and frescoing were concerned, to the recitation rooms also.

The College owes especial thanks for the needed funds to a member of St. Mark's, Philadelphia, and one of Holy Trinity, New York. Much of the work was the gift of Charles Wollmuth, of Bethlehem, Pa., the artist in charge of the decoration. The organ was the gift of a member of Zion's, Philadelphia, and the Bible and Church Book were presented by the students of the College. Other friends also assisted in the undertaking.

THE LIBRARY.

The following gifts have been received during the year. Useful and suitable books are solicited from our friends; such will always be gratefully received and acknowledged.

From an unknown giver, A memorial copy of McIlvaine's Christian Evidences.

From F. A. Muhlenberg, D. D., William Tyndale's Pentateuch, or Five Books of Moses.

From Mrs. Dr. Greenwald, The Devout Christian Series, by Rev. E. Greenwald, D. D., 7 vols.; Bengel's Gnomon, 5 vols.; Burnet's History of the Reformation, 3 vols.; Ranke's History of the Popes, 2 vols.; Storr and Flatt's Biblical Theology; Schmucker's Popular Theology; Grove's Greek-English Dictionary; Emerson's Augustinism and Pelagianism; Maclaine's Mosheim's Church History, 2 vols.; Cummings' Lectures, 2 vols.; Joseph Cook's Lectures, 4 vols.; Kurtz's Church History, 2 vols.; Faber on Election; Keil's Commentary on Joshua; Secker's Works; Paley's Works; Hengstenberg's Christology, 3 vols.; Lord's Exposition; Hagenbach's History of Doctrine, 2 vols.; Knapp's Theology, 2 vols.; Robinson's Biblical Researches, 3 vols.; Robinson's Later Researches; Schmucker's Lutheran Manual; West's Biblical Analysis; Robinson's Calmet; Comprehensive Commentary; 5 vols.; Lange's Genesis; West's Resurrection History; John M. Hahn's Schriften; Halle'sche Nachrichten, 2 Nos. In all, 59 volumes.

From Hon. W. H. Sowden, War of the Rebellion, Series I., vols. 13, 14; The Census Report, vols. 13, 14; Congressional Record, vol. 15, parts 1-6; vol. 16, parts 1-3; Indexes to vols. 15, 16; U. S. Geological Survey, vols. 3 and 4; Powell's Third and Fourth Annual Geological Reports; Report of the Eclipse Expedition '83, vol. II.; U. S. Foreign Relations '83; Internal Commerce '84; Messages and Documents '84-5; American Ephemeris and Nautical Almanac '85; Report of Bureau of Ethnology '80-'83; Descriptive Catalogue of U. S. Gov. Publications '76-'81.

From U. S. Fish Commissioner, vol. 2, '82, vol. 4, '84, part 9, '81, part 10, '82; Fishery Industries, Section I.

From Commissioner of Education, Reports '83 and '84, and Nos. 3 and 4 for '85.

From the Comptroller, Report on the Currency.

From State Geological Survey, 4 vols. of survey with atlases.

From Hon. M. C. Henninger, Grand Atlas, Div. I., County Geological Maps, Pt. 1.

From C. A. Ashburner, M. S., Geology of Natural Gas, Penna. and N. Y.; Product and Exhaustion of Oil Regions, Penna. and N. Y.

From Commissioner of Patents, Annual Report and Official Gazette of Patent Office, weekly, to date.

From Rev. Dr. B. Sadtler, various books, unnamed.

From the Alumni Association, Webster's Dictionary, Unabridged and Indexed; Hudson's School Shakespeare, 23 vols.; Tyler's American Literature; American Commonwealths, 5 vols.; American Men of Letters, 8 vols.; American Statesmen, 13 vols.; Adams' Handbook of American Literature; Adams' Handbook of English Literature. In all, 53 vols.

THE SCIENTIFIC DEPARTMENT.

The following gifts have been received during the year :

From the Class of '88.—Four sets of Dissecting Instruments; eight copies of Chelonian Dissection; eight copies of Rodent Dissection; eight copies of Bird Dissection.

From Professor N. Wiley Thomas, Ph. D.—A combined Crucible and Muffle Furnace; various other apparatus.

MISCELLANEOUS.

Rev. C. L. Fry, Class '78, presented four dozen copies of Stall's Lutheran Year Book for distribution among the students.

ACADEMIC DEPARTMENT.

PRINCIPALS.

GEORGE T. ETTINGER, A. M.,
Latin, Greek, and German.

E. S. DIETER, M. E.,
Mathematics and English Branches.

ORGANIZATION.

By the action of the Board of Trustees this department has been so organized that, whilst still a department of College, its entire management is in the hands of the Principals.

THE DESIGN.

The design of this school is to prepare students for college, for teaching, for business, as well as to give them the practical education and culture necessary for the various pursuits of life.

ADVANTAGES.

1. Moderate Terms.
2. Instruction under experienced teachers.
3. The student can pursue any branch for which he is prepared.
4. Students can enter at any time, and will be charged accordingly.
5. The classes are so arranged as to enable the instructor to devote ample time to each student.
6. Special attention given to the student in branches in which he may be deficient.

DISCIPLINE.

The government of this department is entirely in the hands of the Principals. The discipline is mild but firm, and pupils will be dismissed whenever it may be necessary, or when a longer continuance would be injurious to others. THE PRINCIPALS PREFER A WELL-DISCIPLINED SCHOOL, THOUGH SMALL, TO A DISORDERLY ONE, EVEN IF LARGER.

REGULATIONS.

Students will furnish their own rooms.

The school hours are from half-past-eight to quarter of twelve o'clock A. M., and from one to four o'clock P. M., during which time all students must be present in the school-rooms, unless excused by the Principals.

EXPENSES.

TUITION FOR A SCHOLASTIC YEAR OF FORTY WEEKS.

First Session,	\$16 00
Second Session,	14 00
Third Session,	10 00
Room rent per year,	10 00
Fuel,	8 00
Contingent fee per session,	1 00
Board can be obtained for from \$2.00 to \$3.50 per week.	

STUDIES.

The following includes the list of studies for each grade:

FIRST YEAR.

Reading (Lippincott).	Penmanship.
Orthography (Buckwalter).	Latin (Allen and Greenough).
Modern Geography (Warren).	Composition and Declamation.
Arithmetic (Brooks).	English Grammar (Whitney).

SECOND YEAR.

FIRST TERM.

Latin Grammar and Exercises in Translation (Allen and Greenough).	Reading (Lippincott).
English Grammar (Whitney).	Orthography (Buckwalter).
Arithmetic (Brooks).	History of U. S. (Barnes).
Physical Geography (Hall).	Declamation and Composition.
Bookkeeping (Bryant & Strat- ton).	Penmanship.
	Physics (Gage).

SECOND TERM.

Latin (Allen and Greenough).	Reading (Lippincott).
Greek Grammar and Exercises in Translation (White and Goodwin).	Orthography (Buckwalter).
Arithmetic (Brooks).	History of U. S. (Barnes).
English Grammar and Analysis.	Declamation and Composition.
Bookkeeping (Bryant & Strat- ton).	Penmanship.
	Physics (Gage).

THIRD TERM.

Cæsar (Allen and Greenough).	History of England or Rome (Pennell).
Latin Grammar (Allen and Greenough).	Arithmetic (Brooks).
Greek Grammar and Exercises in Translation (White and Goodwin).	Reading (Lippincott).
Physiology (Dalton).	Orthography (Buckwalter).
Bookkeeping (Bryant & Stratton).	Declamation and Composition.
	Penmanship.

THIRD YEAR.

FIRST TERM.

Cæsar (Allen and Greenough).	Mythology (Berens).
Latin Grammar (Allen and Greenough).	Rhetoric (Kellog).
Anabasis (Goodwin).	Algebra (Robinson).
Greek Grammar (Goodwin).	German (Whitney-Klemm).
History of Greece (Pennell).	Composition and Declamation.

SECOND TERM.

Virgil (Greenough).	Scholar's Companion (Bailey).
Latin Grammar (Allen and Greenough).	Rhetoric (Kellog).
Anabasis (Goodwin).	Algebra (Robinson).
Greek Grammar (Goodwin).	German (Whitney-Klemm).
Ancient Geography (Mitchell).	Composition and Declamation.

THIRD TERM.

Virgil (Greenough).	Ancient Geography (Mitchell).
Latin Grammar (Allen and Greenough).	Geometry (Wentworth).
Anabasis (Goodwin).	Algebra (Robinson).
Greek Grammar (Goodwin).	Review of Arithmetic.
Review of English Grammar.	German (Whitney-Klemm).
Selections from Irving.	Composition and Declamation.



3 0112 105864463