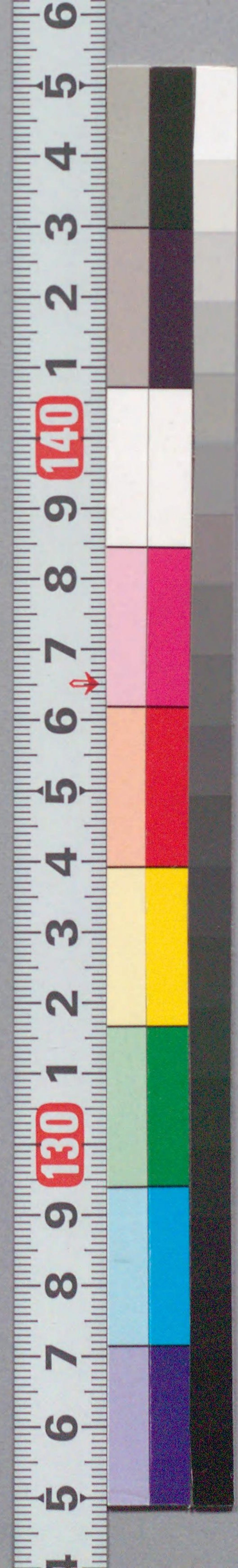




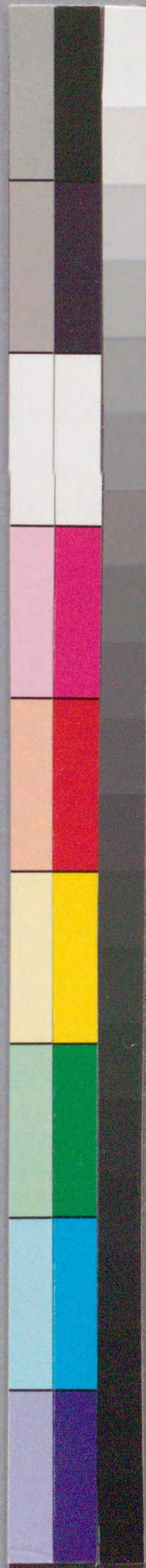
三人若衆独権八

207
870



国立国会図書館 三人若衆独権八 6巻 207-870

ガラス使用



国立国会図書館 三人若衆独権八 6巻 207-870

ガラス使用





三人若衆
獨權八
東西庵南花
柳川重信画
辰乃春
前



東西菴南北作全六冊 九屋甚八販
 柳川重信画

文世三三
 乃三三
 板
 若人
 平
 花
 登
 小
 紫
 若人
 平
 花
 登
 小
 紫





つらき足場を歩か
物まじや新くらん
きりまは竹 金成

大磯の傾城
と

白井の権太左衛門
藏子六三良

ひらり





○蝶兵衛女房
おとせ

花水橋の
○伴推蝶兵衛





八つらん

大碓の
傾城
紫



八つらん

白井
権左
権八

普花宗一節切香花燈文
 清淨香花燈飯衆室之貝悉皆
 嚴好願此香花燈邊滿十方界
 一一諸佛土無量香嚴
 具足菩薩道成就
 如来香供養
 已禮三宝
 七月
 盆會
 此文
 吹
 佛供瓶
 器集問
 三卷閻記之

か〜〜〜ん〜〜ん〜の
 好き好け〜花ち〜ひる
 高敷





二の巻

Handwritten text in a cursive script, likely a preface or introductory text for the second volume.



春の句
舞路



○上及の
悪徒
彌市

Main body of handwritten text on the right page, continuing the narrative or commentary.











Handwritten Japanese text in vertical columns, located above the illustration on the left page.



Handwritten Japanese text in vertical columns, located above the illustration on the right page.

Handwritten Japanese text in vertical columns, located below the illustration on the right page.



三の巻



Handwritten Japanese text surrounding the illustration, including labels like '桂八' and '三の巻'.

Large block of handwritten Japanese text at the bottom of the left page, likely a commentary or a separate section of the work.



Handwritten Japanese text surrounding the illustration, including labels like '三の巻' and '桂八'.





Handwritten Japanese text in kuzushiji script, arranged in vertical columns around the illustration. The text includes names and descriptions related to the scene.



Handwritten Japanese text in kuzushiji script, arranged in vertical columns around the illustration. The text includes names and descriptions related to the scene.









南北作
柳川重

後





Handwritten text in a cursive script, likely a commentary or a letter, located on the right side of the top page.

Handwritten text in a cursive script, continuing the commentary or letter from the top page, located on the right side of the bottom page.



Handwritten text in a vertical column on the left page, likely a chapter introduction or commentary. The text is written in a cursive style and occupies the upper and middle portions of the page.



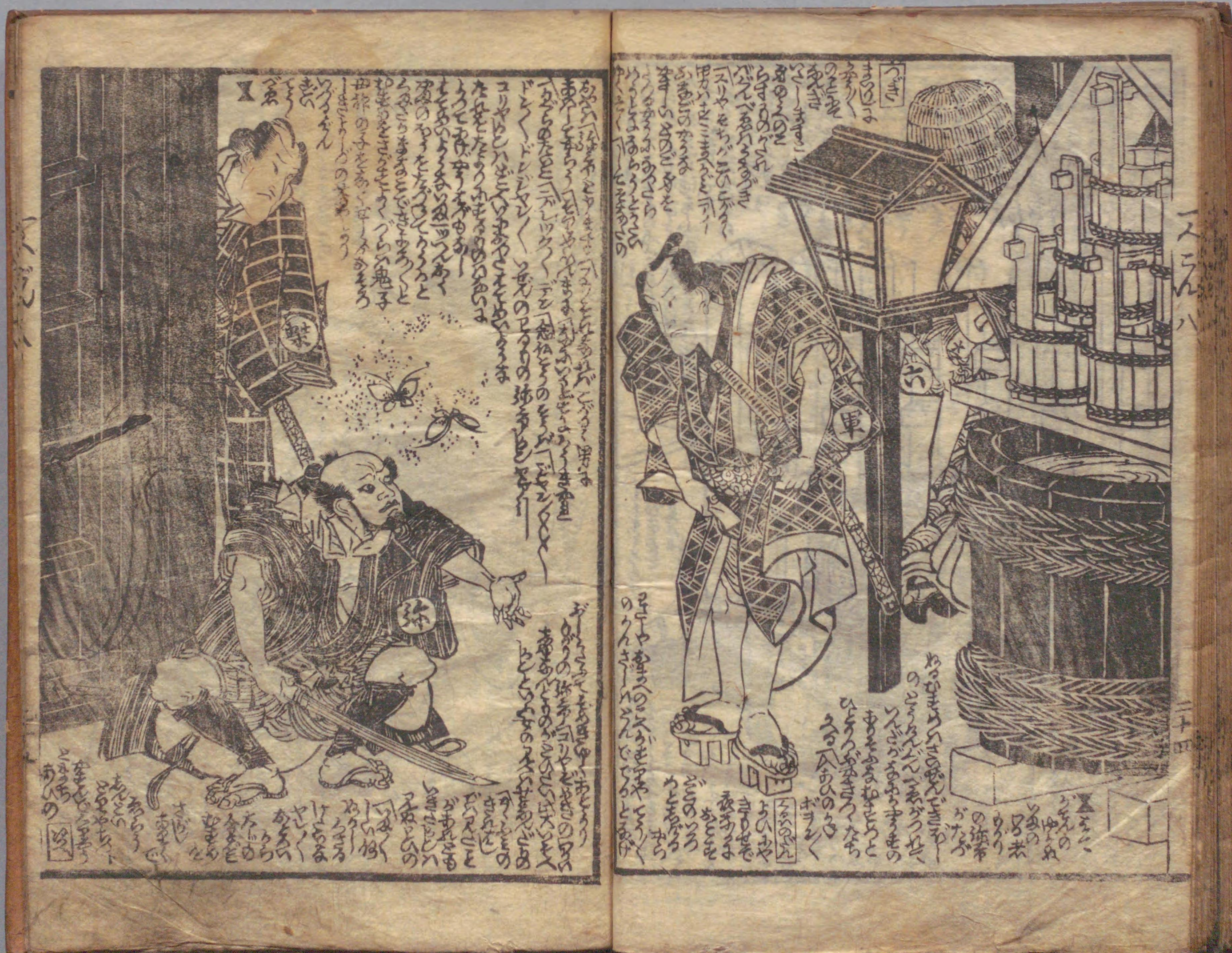
Handwritten text in a vertical column on the right side of the left page, continuing the narrative or commentary. The text is written in a cursive style and occupies the lower portion of the page.

Handwritten text in a vertical column on the top of the right page, continuing the narrative or commentary. The text is written in a cursive style and occupies the upper portion of the page.



Handwritten text in a vertical column on the bottom of the right page, continuing the narrative or commentary. The text is written in a cursive style and occupies the lower portion of the page.





此の巻のウチ



Handwritten text in a cursive style, likely a commentary or a list of names related to the illustration.

Large block of handwritten text, possibly a detailed narrative or a list of names, continuing from the top section.

Handwritten text at the top of the right page, possibly a title or introductory text.



Handwritten text at the bottom of the right page, possibly a commentary or a list of names related to the illustration.

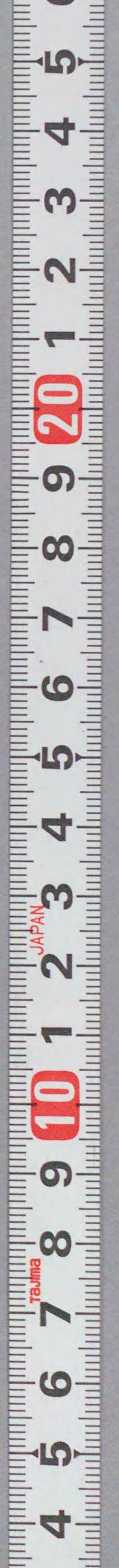


Handwritten text in the upper portion of the left page, written in a cursive style.



Handwritten text in the lower portion of the left page, continuing the narrative or commentary.

Handwritten text in the upper portion of the right page, including a small box with the character '世' (yo).





Handwritten text in the top left corner of the left page, including a circled cross symbol (⊕) and a circled character (⊙).



Handwritten text in the bottom left corner of the left page, including a circled character (⊙).

Handwritten text in the top right corner of the right page, including a circled cross symbol (⊕).



Handwritten text in the bottom right corner of the right page, including a circled cross symbol (⊕).





二人さん

二人



東西葺南北作

此の茶のつくりは...
なまのつくりは...
あり又わが...
さぬくのさく...
るまりのあ...
たのつくり...
口あはて...
よくつくり...
これよ...
なま

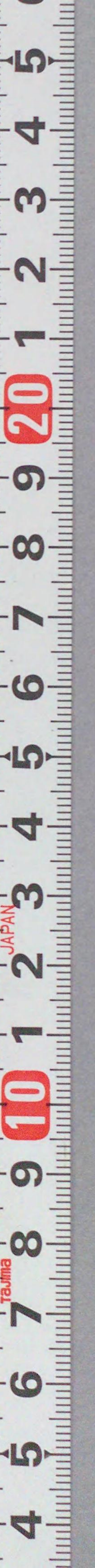
取 江戸芝神明前
元 地本問屋甚丸屋甚八

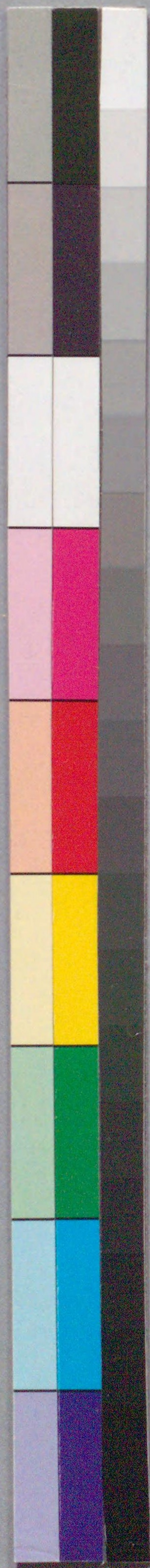
榎川重信画



207
870

三人若衆





国立国会図書館 三人若衆独権八 6巻 207-870



ガラス使用

