

THE
VISITORS' GUIDE
TO
BALTIMORE.

F

189

.B1M7

Neal, Armstrong & Co.

BALTIMORE AND HOLLIDAY STS.

BALTIMORE, MD.

FIVE ◁ **LARGE FLOORS** ▷ **FIVE**

COVERING

25,000 Square Feet

DEVOTED TO THE SALE OF OUR GOODS.

LIBRARY OF CONGRESS.

Chap. 1890 Copyright No.

Shelf..B.1A7

UNITED STATES OF AMERICA.

Dress Goods.
Silks, Satins, etc
Mourning Good
India Linens &
Goods.
Ginghams, Law
Shawls, Wraps, and ready-made
Suits.
Linen Ulsters and Rubber Water-
proofs for Ladies.
Cloths, Cassimeres, etc.
Muslin Underwear, Chemise, Night
Dresses, Drawers, Skirts and
Corset Covers.
Linen, Table Cloths, etc.
Sheetings, Blankets, Comforts and
Spreads.
Cotton Goods and Flannels.
Hosiery, Gloves and Handkerchiefs
Neckwear for Ladies.

eries, Fringes, Pas-
Buttons, Pins, Nee-
id Rain Umbrellas,
es, etc.
s, Dressing Cases,
books.
Toilet Articles, including Soaps and
Perfumery.
Gentlemen's Furnishing Goods, in-
cluding Shirts, Drawers, Collars,
Cuffs, Ties, Hosiery and Under-
wear.
Ladies, Gentlemen's and Children's
Gauze Underwear.
Millinery Goods, Hats, Bonnets,
Ribbons, etc.
Ladies' and Children's Shoes.
Dresses and Wraps made to order
at a few hours' notice.
China, Glass, and House-Furnish-
ing Goods.

Orders by Mail promptly attended to and samples sent
to any part of the country.

ARMSTRONG, CATOR & CO.

237 & 239 W. BALTIMORE ST.

Ribbons, Millinery, Flowers,

FEATHERS, &c.

SILK GOODS,

STRAW AND FELT GOODS,

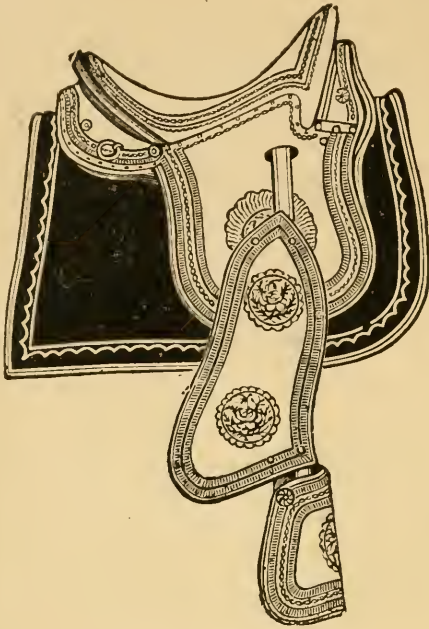
WHITE GOODS,

VEILING, LACES,

NECK WEAR,

NOTIONS, GLOVES, HOSIERY,

UNDERWEAR, &c.



LERCH BROTHERS,

(Successors to AUGUSTUS LERCH,)

MANUFACTURERS OF

Saddlery,

HARNESS,

COLLARS,

TRUNKS, &c.

Nos. 155 and 157

West Pratt Street,

BALTIMORE, MD.

PAPER of every description may be had at
No. 40 SOUTH CHARLES STREET, BALTIMORE.

SALESROOMS AND OFFICE OF
JOHN A. DUSHANE & CO.'S
Woodbine Mill,
Ivy Mill,
Caledonia Mill,
Antietam Mill,
Forge Mill,
Maryland Mill,
Eagle Mill.

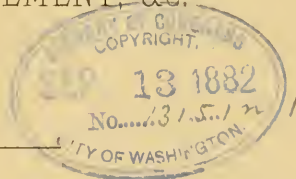
Average Daily production of Paper 50,000 POUNDS

—THE—
 —VISITORS' GUIDE—
 —TO BALTIMORE—

GIVING LOCATION OF THE MOST RELIABLE MERCANTILE HOUSES
 OF THE CITY, IN DIFFERENT LINES OF BUSINESS,

TOGETHER WITH

PLACES OF AMUSEMENT, &C.



JAS. NOBLE MORSELL, PUBLISHER.

BALTIMORE:

PRINTED BY WHITE & GRAMAM, 20 SECOND ST.

1882.

HENNEGEN, BATES & CO.
JEWELERS,



IMPORTERS OF AND DEALERS IN

DIAMONDS,
FINE WATCHES,

RICH JEWELRY,

AND

STERLING SILVERWARE,

MARBLE CLOCKS, BRONZES, &C.

AMERICAN WATCHES

A SPECIALTY,

229 W. BALTIMORE ST., Cor. CHARLES,

BALTIMORE.

HENNEGEN, BATES & CO.

THE VISITORS' GUIDE TO THE CITY OF BALTIMORE.

CONTENTS.

| | |
|--|----|
| American Building..... | 61 |
| Amusements..... | 35 |
| Banks..... | 27 |
| Battle Monument..... | 23 |
| Bay and Coastwise Steamers..... | 59 |
| Cemeteries..... | 55 |
| City Hall..... | 11 |
| City Officials..... | 9 |
| Courts..... | 49 |
| Educational Institutions..... | 51 |
| Fire Alarm..... | 31 |
| German Correspondent Building..... | 45 |
| Hotels..... | 19 |
| Index to Advertisements..... | 65 |
| Libraries..... | 17 |
| Passenger Depots..... | 15 |
| Post Office..... | 13 |
| Public Buildings..... | 57 |
| Public Halls..... | 51 |
| Public Parks and Squares..... | 17 |
| Railroad Ticket Offices..... | 15 |
| Rates of Fare for Hacks..... | 25 |
| Table indicating difference in time between Washington and principle Cities..... | 39 |
| Telegraph Offices..... | 15 |
| The Sun Iron Building..... | 29 |
| United States Mails..... | 41 |
| United States Officials..... | 13 |
| Wharves, Location of..... | 47 |

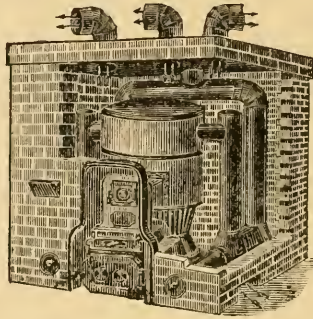
ELIJAH BUTLER
MERCHANT TAILOR,

53 MANOVER ST., BALTIMORE, MD.

A FIT GUARANTEED.

WM. E. WOOD & CO.

296 W. Baltimore and
1 N. Liberty Street,
BALTIMORE.



Manufacturers of

Steam Heating Apparatus

HOT AIR FURNACES,

RANGES,

FIRE PLACE HEATERS,

STOVES AND COOKING UTENSILS,

FOUNDRY, BALTIMORE, MD.

THE VISITORS' GUIDE TO THE CITY OF BALTIMORE.

REGISTER OF CITY OFFICIALS.

| | |
|--------------------------------|---|
| MAYOR, | HON. WM. PINKNEY WHYTE. |
| | OFFICE, CITY HALL. |
| CITY REGISTER, | JOHN A. ROBB. |
| | OFFICE, CITY HALL. |
| CITY COMPROLLER, | JOSHUA VANSANT |
| | OFFICE, CITY HALL. |
| CITY COUNSELLOR, | JOHN P. POE. |
| | OFFICE, CITY HALL. |
| CITY SOLICITOR, | THOMAS W. HALL |
| | OFFICE, CITY HALL. |
| CITY COMMISSIONER, | THOMAS S. WILKINSON. |
| | OFFICE, CITY HALL. |
| CITY COLLECTOR, | HENRY S. TAYLOR. |
| | OFFICE, CITY HALL. |
| HEALTH DEPARTMENT, | GEORGE W. BENSON, M. D., <i>Commissioner.</i> |
| | A. ROBERT CARTER, <i>Secretary.</i> |
| | OFFICE, CITY HALL. |
| FIRE DEPARTMENT, | JOHN M. HENNICK, <i>Chief Engineer.</i> |
| | OFFICE, CITY HALL. |
| | POLICE DEPARTMENT, |
| | OFFICE, CITY HALL. |
| GEO. COLTON, <i>President.</i> | JOHN T. GRAY, <i>Marshal.</i> |

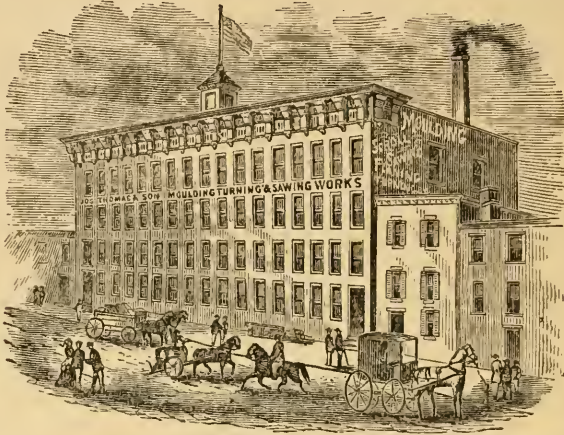
ESTABLISHED IN 1820.

JOSEPH THOMAS & SON,

Factory: Leadenhall, near Montgomery St. Warerooms: 32 Park Ave.

BALTIMORE.

Branch Office: 1320 Pennsylvania Ave., Washington, D. C.



MANUFACTURERS OF

BUILDERS' MATERIAL,

DOORS, SASH, BLINDS, MOLDINGS, BRACKETS, &c.

CHURCH FURNITURE,

PEWS, PULPITS, ALTAR RAILS, GALLERY FRONTS, &c.

Walnut Doors, Mantels & Trimmings for Dwellings, Newels, Banisters & Hand Railing,

OFFICE AND BANK FURNITURE,

HARD WOOD LUMBER, WALNUT, POPLAR, ASH, OAK, &c.

ALEXANDER DODD & Co.

MANUFACTURERS OF

Saddlery, Harness, Collars

TRUNKS, SATCHELS, &c.

No. 263 West Baltimore Street, Corner of Hanover,

BALTIMORE.



CITY HALL.—HOLLIDAY, FAYETTE, NORTH AND LEXINGTON STS.

STRANGERS visiting our city are cordially invited
to examine our elegant Stock of

DIAMONDS,
FINE WATCHES,

RICH JEWELRY,
Sterling Silver Ware,
SILVER PLATED WARE, &c.

We take pleasure in showing these Goods
whether you purchase or not.

JUSTIS & ARMIGER,
No. 195 West Baltimore Street.



CUSHINGS & BAILEY,
PUBLISHERS,

Booksellers and Stationers,

262 WEST BALTIMORE STREET,

THE LARGEST STOCK OF

LAW, CLASSICAL, MEDICAL,

MISCELLANEOUS AND SCHOOL BOOKS,

FOREIGN AND DOMESTIC STATIONERY

In the City, and offered for sale at lowest prices.

BLANK BOOKS made to order and Ruled to any Pattern, so that Public Officers, Banks and others can have their wants supplied promptly with good substantial work at moderate prices.

THE POST OFFICE.

The Post Office is located in the Government Building, bounded by Second, Gay and Lombard Streets. The Office is open for the delivery of letters and sale of stamps from 8 A. M. to 8 P. M. Registered Letter and Money Order Departments from 9 A. M. to 4 P. M. Postmaster's Room from 9 A. M. to 4 P. M. Office is open on Sunday from 8.30 A. M. to 10 A. M. Revenue Stamps of all denominations for sale at the Stamp Window. Five deliveries are made daily, (except Sunday,) by Letter Carriers at 7.30, 10.30 and 12.30 A. M., and 2.30 and 4.30 P. M. Collections are made daily from the street letter boxes, as follows: 5 A. M. and 9 P. M. On Sunday but one collection is made, from 4 to 8 P. M. Letters are also collected and delivered at the principal hotels.

UNITED STATES OFFICIALS.

Collector of Customs—EDWIN H. WEBSTER, Post Office Building.

United States Marshal—JOHN M. MCCLINTOCK, Office U. S. Court House, Fayette and North Streets.

Collector of Internal Revenue—C. IRVING DITTY, Office Post Office Building.

United States Commissioners—ISAAC BROOKS, JR., G. MORRIS BOND, R. LYON ROGERS, Office 54 West Fayette Street.

Postmaster—HARRISON ADREON, Post Office Building.

U. S. Assistant Treasurer—FRANCIS M. DARBY, Post Office Building.

Commissary U. S. Army—Col. J. McL. TAYLOR, 51 S. Sharp Street.

Quarter-Master U. S. Army—CHAS. W. FOSTER, W. Fayette Street.

GEORGE CHIPMAN & CO.

Manufacturers and Wholesale Dealers in

Wooden Ware, Brushes,

BROOMS, WILLOW WARE,

MATCHES,

Cordage, Demijohns, Cotton Twines, &c.

Sole Agents for Ager's Yeast Cakes,

CORNER CALVERT AND LOMBARD STS.

BALTIMORE, MD.



J. HOLYLAND'S

GALLERY OF

Photography,

229 & 231 W. Baltimore St.

Cor. Charles St.

BALTIMORE.

PORTRAITS IN OIL, PASTEL AND CRAYON,

PHOTOGRAPHS IN WATER COLORS, INDIA INK, Etc.

Porcelain Miniatures, and all kinds of Fine Artistic Work.

Specialty Copying of *Old Pictures of Deceased Friends* made a specialty.

Best Cabinets \$3 00 per doz. Low prices, good work.

Having one of the most extensive and well appointed Galleries in the country, I guarantee work that cannot be excelled.

Every Negative is finely and artistically RE-TOUCHED, producing great delicacy of complexion.

Specialty We guarantee satisfaction.

Specialty Please call and see specimens of work.

PASSENGER DEPOTS.

Baltimore and Ohio—(Camden Station) Howard, Camden and Eutaw Streets.

Northern Central—(Calvert Station) Corner Calvert and Franklin Sts.

Baltimore and Potomac—(Calvert Station) Corner Calvert and Franklin Streets.

Pennsylvania—(Union Depot) North Charles Street.

Philadelphia, Wilmington and Baltimore—(President Street Station) Corner President Street and Central Avenue.

Western Maryland—(Hillen Station) Corner Hillen and Exeter Sts.



RAILROAD TICKET OFFICES.

Pennsylvania—N. E. Corner Baltimore and Calvert Sts.

Baltimore and Ohio—S. E. Corner Baltimore and Calvert Sts.

Western Maryland—122 West Baltimore St.



TELEGRAPH OFFICES.

Western Union Telegraph Company—Office, S. W. Corner Baltimore and Calvert Sts. *Branch Offices*: Barnum's Hotel; Howard House; 39 South Street; Calverton Hotel; Wilhelm's Hotel; Abbot Iron Works, Canton; President Street Station; Jackson's Wharf, foot of Bond Street; Calvert Station; Mount Vernon Hotel; N. E. Corner Baltimore and Calvert Streets; 78 Light Street Wharf; Stock Exchange; 32 South Street; Gay and Lombard.

American District Telegraph Company—General Office, S. W. Corner Baltimore and Calvert Streets: *Branches*, 364 West Baltimore Street, and 108 Franklin Street.

EDW. JENKINS & SONS,

IMPORTERS OF

CARRIAGE AND SADDLERY

Hardware,

180 WEST BALTIMORE STREET,

BALTIMORE, MD.

E. AUSTIN JENKINS, }
ALFRED JENKINS, JR. }
ROBERT H. JENKINS, }
T. MEREDITH JENKINS }

PUBLIC PARKS AND SQUARES.

- Druid Hill Park*—On Madison Avenue extended, accessible by terminable City Railway Lines.
- Patterson Park*—East of Patterson Park Avenue, between Baltimore and Gough Streets.
- Riverside Park*—West Street near third.
- Canton Square*—Canton Avenue, Canton, Lancaster and Patuxent Sts.
- Franklin Square*—Corner West Lexington and Calhoun Streets.
- Harlem Square*—Edmondson and Harlem Avenues and Gilmor and Calhoun Streets.
- Hermitage Square*—Montgomery and S. Sharp Streets.
- Jackson Square*—On Fayette Street, between Broadway and Wolf St.
- Lafayette Square*—Corner Lafayette Avenue and Republican St.
- Madison Square*—Corner Chase and Eden Sts.
- Maryland Square*—On W. Fayette, between Payson and Fulton Sts.
- Monument Square*—Calvert Street, between Lexington and Fayette.
- Mount Vernon Square*—Mount Vernon and Washington Places.
- Union Square*—W. Lombard, between Stricker and Gilmor Streets.

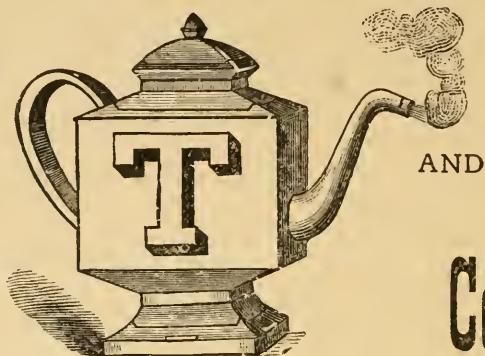
LIBRARIES.

- Peabody Institute Library*—Corner Mount Vernon Place and Charles Street. This Library contains 53,000 volumes and is open from 9 A. M. to 10 P. M. to all, being entirely free. The books are not taken from the building. P. R. Uhler, Librarian.
- Mercantile Library Association*—Corner Charles and Saratoga Streets. This Library contains 29,000 well selected volumes and is open for members generally from 10 A. M. to 10 P. M. John W. M. Lee, Librarian.
- Maryland Institute Library*—Baltimore Street, opposite Harrison. This Library contains 17,000 volumes, and is open from 9 A. M. to 9 P. M. Alex. F. Lushy, Librarian.
- Law Library*—(Under the control of the Library Company of the Baltimore Bar)—Monument Square, corner Lexington Street. Open daily from 9 A. M. to 10 P. M., except Sundays and Legal Holidays. Contains 7,000 volumes. Daniel T. Chandler, Librarian.
- South Baltimore Mechanics' Library Association*—Montgomery St., west of William. Contains about 1,200 volumes. Open from 7 to 10 P. M.

GREAT CHINA TEA CO.

IMPORTERS, WHOLESALE AND RETAIL DEALERS IN

TEAS



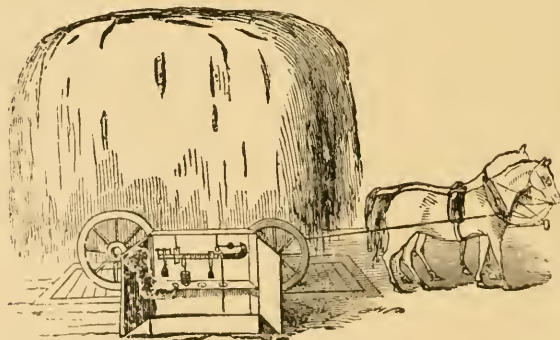
Coffees.

**25 WEST BALTIMORE STREET,
47 NORTH EUTAW STREET.**

*The only Exclusive Tea and Coffee House in
Baltimore.*

Call and see our process of Roasting Coffee.

MARDEN'S SCALE FACTORY,



**Hay, Coal, Cattle, Platform and Counter
S C A L E S,**

JESSE MARDEN,

55 South Charles Street, Baltimore, Md.

HOTELS.

- American*—N. W. corner Calvert and Franklin Streets.
- ↗ *Barnum's City*—Corner Calvert and Fayette Streets.
- Calvert House*—Corner Calvert and Pleasant Streets.
- Calverton*—Calverton Road.
- The "Carrollton"*—Baltimore Street, near Light, and corner Light and German Streets.
- City Hall*—19 North Holliday Street.
- Clarendon*—S. W. corner Pratt and Hanover Streets.
- Eagle*—132 Hillen Street.
- Eutaw House*—N. W. corner Baltimore and Eutaw Streets.
- Franklin*—50 Hillen Street.
- Franklin House*—N. W. corner Franklin and Howard Streets.
- Gardner's*—8 South High Street.
- General Wayne*—N. W. corner Baltimore and Paca.
- Gibbons'*—S. W. corner Howard and Saratoga Sts.
- Guilford House*—47 Mount Vernon Place.
- Guy's* (European) Monument Square.
- Howard House*—5 North Howard Street, near Baltimore St.
- Maltby House*—No. 176 to 186 W. Pratt Street.
- Mansion House*—N. W. Cor. Fayette and St. Paul Sts.
- Miller's*—S. W. corner Paca and German Streets.
- Mount Vernon*—81 W. Monument and 44 Cathedral Streets.
- Niagara House*—113 Camden Street.
- Northern Central*—125 North Calvert Street.
- Pennsylvania House*—158 Franklin Street.
- Pepper's*—North Holliday Street, opposite City Hall.
- St. James*—Corner Charles and Centre Streets.
- Three Tuns*—S. W. corner Pratt and Paca Streets.
- Union*—Corner Pratt and Charles Streets.
- United States*—69 President Street.
- Western Maryland*—37 Pennsylvania Avenue.

Spencer's

ESTABLISHED IN 1866.

THE FIRST HOUSE IN THE CITY TO MAKE A SPECIALTY AND
KEEP A FULL LINE OF

Ladies' Entire Outfits,

LINEN, CAMBRIC AND COTTON CHEMISES,
NIGHT DRESSES, DRAWERS, SKIRTS,

Camasoles, Corset Covers, Aprons, &c., &c.

SUITS, CLOAKS AND ROBES,

CHILDREN'S

Dresses, Cloaks, Corsets, Aprons, Bonnets, Chemises, Drawers, Skirts and
Night Dresses.

INFANTS'

Nainsook Robes, Dresses, Slips, French Aprons, Lace, Merino and Silk
Hats and Caps, Merino Sacques, Knit Sacques, Shirts, Socks, Caps
and Turbans, Baskets, Embroidered Merino
and Flannel Shawls.

CLOAKS AND DRESSES

OF LADIES' OWN MATERIAL

MADE UP TO ORDER IN TWENTY-FOUR HOURS,

At Popular Prices, and in the Latest Styles.

E. N. SPENCER,

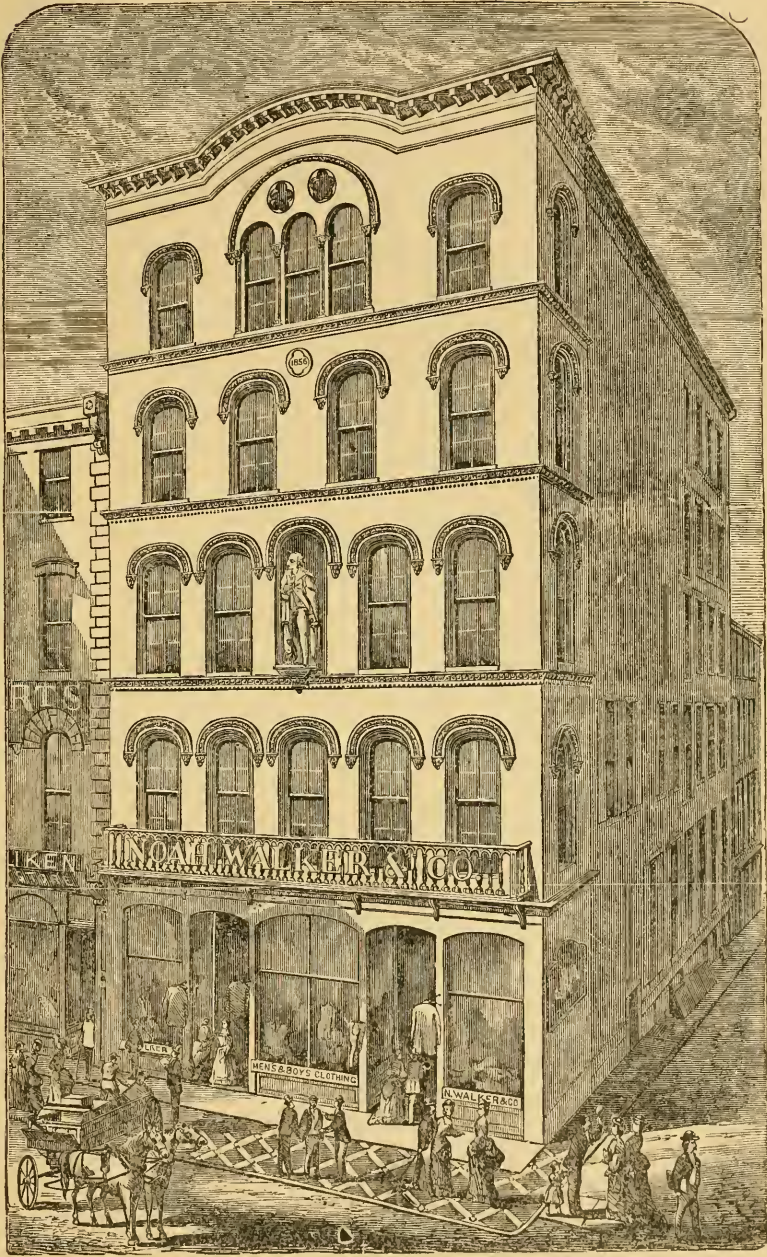
No. 69 Lexington St.

(6 Doors west of Charles St.)

BALTIMORE, MD.

NOAH WALKER & CO.

MEN'S, YOUTH'S, BOYS' AND CHILDREN'S CLOTHING,



165 and 167 W. BALTIMORE STREET, Between Calvert and Light Streets,

WASHINGTON BUILDING.

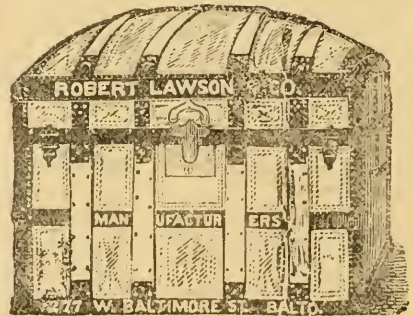
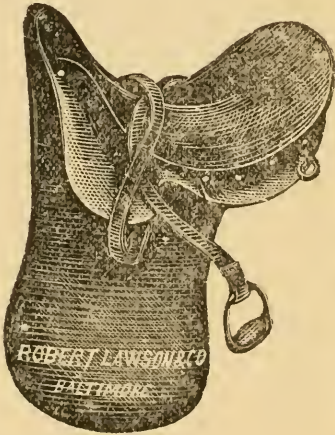
Baltimore, Maryland,

We Pledge Ourselves to Duplicate any Regular Bill made in any of
the Eastern or Northern Cities.

ROBERT LAWSON & CO.

MANUFACTURERS OF

Saddles, Harness, Collars



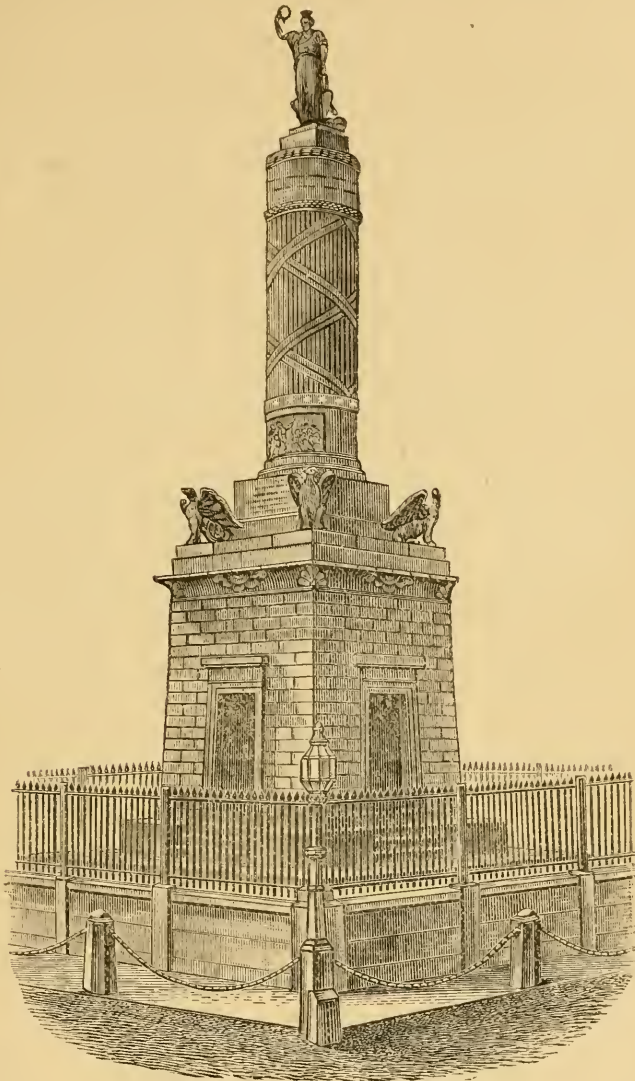
TRUNKS, Etc.

LAP ROBES, HORSE COVERS, WHIPS,

BAGS, SATCHELS, VALISES,

277 WEST BALTIMORE STREET,

BALTIMORE.



THE BATTLE MONUMENT, MONUMENT SQUARE.

HUGH SISSON & SONS,
MARBLE AND STATUARY,
 MONUMENTS, TOMBS, CEMETERY CURBING,
 MANTELS, TILE, FURNITURE SLABS & COUNTERS,
 Salesroom, 140 W. Baltimore Street,
 STEAM MARBLE WORKS AND YARD—CORNER OF NORTH AND MONUMENT STREETS.

ESTABLISHED 1845.

HIRSHBERG, HOLLANDER & CO.

MANUFACTURERS' AGENTS, IMPORTERS AND WHOLESALE DEALERS IN

FRENCH AND AMERICAN

Window, Enameled and Colored

GLASS,

PAINTS, OILS, VARNISHES,

BRUSHES, GLUES,

AND

PAINTERS' AND ARTISTS' SUPPLIES.

S. E. Corner Pratt and Hanover.

And 240 West Pratt Street,

BALTIMORE, MD.

We keep a complete line of COLORS DRY, in OIL, and
in JAPAN, suitable for House, Sign, Coach and Fresco
Painters, Artists, Grainers, &c.

SEND FOR SPECIAL CATALOGUE.

SOLE AGENTS FOR

JOHNSTON'S DRY SIZED KALSOMINE,

NEW YORK ENAMEL PAINT COMPANY,

Hirshberg Manufacturing Co.'s Strictly Pure White Lead.

Send for Sample Card of Colors.

RATES OF FARE FOR HACKS.

Steamboats and Railroad Stations—To or from any Steamboat or Railroad Station, to any hotel or private house in any part of the city, one passenger 75 cents. For each additional passenger, 25 cents; each trunk, box or bag sufficiently large to be strapped on, 15 cents. No charge for small parcels put in the carriage.

City—From any one point within the City limits to another, one passenger, 75 cents. For each additional passenger, 25 cents.

Time—For one hour, \$1.50; each additional hour, \$1. Same rates for fractions of an hour, but no charge for less than quarter hour.

Evening and Night—For Hacks taken from the Stand to any part of the city, from May 1 to September 3, inclusive, after 8 p. m for a single passenger, 75 cents. If more than one, each 50 cents. Like sum for returning. From October 1, to April 30, inclusive, after 7 o'clock, p. m., the same. No charge for baggage.

General Rules—1. Additional allowance for Carriages only when sent from Stand, 25 cents. 2. Children over 10 years half price, under 10, no charge. Police are enjoined to enforce these rules.

O. HERRING, SONS & CO.

ESTABLISHED 1845.

Manufacturers of

PENNSYLVANIA BRUSSELS,

Wholesale and Retail Dealers in

Carpeting, OilCloths & Mattings

39 N. HOWARD STREET.

BRANCH STORE,

Wall Papers, Window Shades, Mosquito Nets,

425 W. BALTIMORE ST., Near Green,

BALTIMORE, MD.

HUTZLER BROTHERS,

IMPORTERS OF

NOTIONS, WHITE GOODS,

HOSIERY, UNDERWEAR, &c.

273 W. BALTIMORE ST.

RETAIL DEPARTMENT 67 NORTH HOWARD STREET,

BALTIMORE.

A. G. Hutzler,
Chas. G. Hutzler,
David Hutzler. }

FRED. WALPERT & CO.

Steamed Curled Hair,

BRISTLES AND HUSK

BEDDING, MATTRESSES, &c.

No. 28 N. GAY ST., BALTIMORE.

HAIR FACTORY, Baltimore County. HUSK FACTORY, 48 McKim St.

BANKS.

All Banks are open daily from 10 A. M. to 3 P. M., except Sundays and Legal Holidays.

- Bank of Commerce—26 South Street.
 Broadway Savings Bank—63 South Broadway.
 Central Savings Bank—S. E. cor. Lexington and Charles Streets.
 Chesapeake Bank—S. E. cor. North and Fayette Streets.
 Citizens National Bank—Cor. Hanover and Pratt Streets.
 Commercial and Farmers National Bank—Cor. Howard and German Streets.
 Eutaw Savings Bank—S. E. cor. Eutaw and Fayette Streets.
 Farmers and Merchants National Bank—N. W. cor. Lombard and South Streets.
 First National Bank—8 South Gay Street.
 Franklin Bank—15 South St. opposite German Streets.
 German-American Bank—173 South Broadway.
 German Bank—Cor. Baltimore and Holliday Streets, up stairs.
 German Savings Bank—Baltimore Street, opposite Pearl,
 Howard Bank—N. W. cor. Howard and Fayette.
 Maryland Savings Bank—155½ W. Baltimore Street.
 Merchants National Bank—S. W. cor. Gay and Second Streets.
 Merchants and Manufacturers Bank, corner Baltimore and Liberty Sts.
 Metropolitan Savings Bank—N. E. cor. Calvert and Lexington Streets.
 National Drovers and Mechanics Bank—N. W. Cor. Fayette and Eutaw Streets.
 National Exchange Bank—4 South Sharp St.
 National Farmers and Planters Bank—Cor. South and German Streets.
 National Marine Bank—N. E. cor. Gay and Second Streets.
 National Mechanics Bank—S. E. cor. Calvert and Fayette Streets.
 National Union Bank of Maryland—Fayette St. east of Charles.
 Old Town Bank—Gay and Exeter Streets.
 Peoples Bank—Cor. Baltimore and Paca Streets.
 Safe Deposit and Trust Company—9, 11 and 13 South Street.
 Savings Bank of Baltimore—N. W. cor. Gay and Second Streets.
 Second National Bank—147 South Broadway.
 Third National Bank—31 South Street.
 The National Bank of Baltimore—N. E. cor. Baltimore and St. Paul Sts.
 Traders National Bank—Cor. Light and German Streets.
 Western National Bank—162 W. Fayette Street.

ESTABLISHED 1851.

JOHN P. SHRINER & CO.

Successors to JOHN D. HAMMOND & CO.

Saddle, Harness, Trunk

AND

Collar Manufacturers,

WHOLESALE AND RETAIL,

349 W. BALTIMORE & 106 GERMAN STS.

Three Doors East of Eutaw,

BALTIMORE, MD.

JNO. H. WILLIAMS & Co.

S. W. Cor. Howard and Baltimore Streets, Baltimore, Md.

Brass Founders and Machinists,

MANUFACTURERS OF

PUMPS, &c.

GENERAL SOUTHERN AGENTS FOR

HANCOCK INSPIRATOR CO.

And Dealers in

PIPE OF ALL KINDS, PLUMBING MATERIALS, &c.

SOLE SOUTHERN AGENTS FOR

Holland & Thompson's Oline Compound.

Patent Sight Feed Lubricator and Oil Cups,

CRAIG'S HYDRAULIC GOVERNORS for STEAM ENGINES.



THE SUN IRON BUILDING, CORNER BALTIMORE AND SOUTH STREETS.

SADDLERY HARDWARE.
GEO. N. MACKENZIE & CO.

IMPORTERS

ENGLISH, GERMAN AND DOMESTIC

— SADDLERY & HARDWARE —

18 S. CHARLES ST. 3 doors below German St. BALTIMORE.

WAGNER'S
 GREEN HOUSE
 RESTAURANT



188 AND 190 WEST PRATT STREET,

BALTIMORE

*This Restaurant is the Oldest and most extensive in its
 Accommodations of any in the City.*

THE VISITORS' GUIDE TO THE CITY OF BALTIMORE.

FIRE ALARM TELEGRAPH STATIONS.

For Fire Alarm, Police Purposes and for the Recovery of Lost Children.

KEYS are left with the occupants of buildings in the vicinity of each Fire Alarm Box. The members of the Police force also possess Keys.

| BOX. | LOCATION. | BOX. | LOCATION. |
|------|---|------|--|
| | 1 | | 3 |
| 12 | Baltimore and Gay. | 3 | No. 4 Engine House, City Hall. |
| 121 | Exchange Place and Commerce St. | 31 | Pleasant and Calvert. |
| 123 | Pratt and Gay. | 312 | Clay and Park. |
| 124 | South St. and Bowly's Wharf. | 313 | Charles and Franklin. |
| 125 | Patterson and Cable. | 314 | Howard and Franklin. |
| 13 | Pratt Street Bridge. | 315 | Monument St. and Plover alley. |
| 131 | Buchanan's Wharf and Sugar Refinery. | 316 | Monument and North. |
| 132 | Dugan's Wharf and Wood St. | 317 | Sun Office. |
| 134 | Concord St. and Eastern Ave. | 32 | 7 Engine, Eutaw st. and Druid Hill Ave. |
| 135 | Drawbridge, foot of Falls. | 321 | Franklin and Greene. |
| 136 | Foot Union Dock. | 322 | St. Mary's Seminary, Paca street. |
| 14 | No. 3, Engine House, Lombard & Exeter. | 323 | N. W. POLICE STATION, Pennsylvania Av. |
| 141 | President St. and Canton Ave. | 324 | Preston St. and Druid Hill Ave. |
| 142 | Bank and Exeter. | 325 | Lanvale and McCollough. |
| 143 | Pratt St. and Central Ave. | 326 | McMechin St. and Penna. Ave. |
| 145 | Baltimore ST. and Central Ave. | 327 | McMechin St. and Madison Ave. |
| 15 | EASTERN POLICE STATION. | 34 | Eager St. and Morton Alley. |
| 151 | Caroline and Lombard. | 341 | Biddle and St. Paul. |
| 152 | Broadway and Pratt St. | 342 | Hoffman and Cathedral. |
| 153 | Caroline St. and Canton Ave. | 343 | Charles St. Bridge. |
| 154 | Caroline and Thames. | 345 | Charles St. and Boundary ave. |
| 156 | Broadway and Thames St. | 35 | Biddle and Garden. |
| 16 | No. 5 Engine House, Ann St. near Gough. | 351 | Eutaw Place and Dolphin street. |
| 161 | Ann Street and Canton Ave. | 352 | Mosher and Bolton. |
| 162 | Thames and Wolfe. | 353 | Mt. Royal and Boundary Aves. |
| 163 | Baltimore and Washington. | 36 | 13 Engine, Fremont st. and Myrtle ave. |
| 164 | Bank and Washington. | 361 | Pearl and Saratoga. |
| 17 | 11 Engine, Patterson Park & Eastern Av. | 362 | Chatsworth and Franklin. |
| 171 | Chester St. and Canton Ave. | 363 | George and Fremont. |
| 172 | Lombard St. and Patterson Park Ave. | 364 | No. 4 H. & L. House, Biddle St. |
| 173 | Alice Anna and Burke. | 37 | Lafayette and Arlington aves. |
| 18 | Chesapeake and Boston. | 371 | Mosher and Gilmor. |
| 181 | Canton and Elliott. | 372 | Patterson ave. and Stricker St. |
| 18 | Bay View Asylum. | 38 | Fremont st. and Pennsylvania ave. |
| | 2 | 381 | Presstman and Gilmor. |
| 21 | Gay and Saratoga. | 382 | Madison and Boundary aves. |
| 212 | No. 1 Truck House, Harrison St. | 39 | Pennsylvania and Boundary aves. |
| 213 | High and Low. | | 4 |
| 214 | Exeter and Fayette. | 4 | Calvert and Baltimore. |
| 215 | Douglass and Aisquith. | 41 | Fayette and St. Paul. |
| 216 | Jefferson and Aisquith. | 412 | Baltimore and Hanover. |
| 23 | Mullikin and Eden. | 413 | Salvage Corps, Liberty st. near Fayette. |
| 231 | Jefferson and Bond. | 414 | German and Howard. |
| 232 | Fayette and Bond. | 415 | Baltimore and Eutaw. |
| 234 | Ann and Orleans. | 416 | Green and German. |
| 235 | Castle and Monument. | 417 | Green and Portland. |
| 236 | Fayette St. and Collington Ave. | 42 | No. 2 Truck House, Paca st. |
| 24 | No. 6 Engine House, Gay and Ensor. | 421 | WESTERN POLICE STATION. |
| 241 | Front and Hillen. | 423 | Baltimore and Pine. |
| 242 | Madison and Forrest. | 424 | Fremont and Lexington. |
| 243 | Monument and Ensor. | 425 | Baltimore st. and Poppleton. |
| 245 | Penitentiary. | 426 | Baltimore st. and Carrollton av. |
| 25 | Constitution and Eager. | 43 | Lombard and Penn. |
| 251 | Eager and Ensor. | 431 | Pratt and Fremont. |
| 252 | Greenmount Ave. and John St. | 432 | Pratt and Poppleton. |
| 253 | Harford and Central Aves. | 434 | Pratt and Carey. |
| 254 | Greenmount and Boundary Aves. | 45 | 8 Engine, Mulberry st. near Schroeder. |
| 26 | Gay and Madson. | 451 | Carey st. and Edmondson ave. |
| 261 | Chase and Eden. | 452 | Lexington and Stricker. |
| 262 | Broadway and Gay St. | 453 | Lanvale and Stricker. |
| 263 | Caroline and John. | 46 | Baltimore St. and Frederick road. |
| 27 | No. 9 Engine, Madson & McDonough. | 461 | Mount and McHenry. |
| 271 | N. E. POLICE STATION, Chew and Durham. | 462 | Lombard and Monroe. |
| 272 | Biddle and Wolfe. | 47 | Fayette and Fulton. |
| 28 | Schutzen Park, Belair Ave. | 471 | Fulton and Franklin. |
| | | 48 | Bentalou st. and Frederick road. |

Fire Alarm List continued on page 35.

PLEASE SEND FOR CATALOGUE AND PRICE LIST.

YOU WILL SAVE 25 PER CENT. BY BUYING YOUR SHOW CASES FROM

Baltimore Steam Show Case Works.

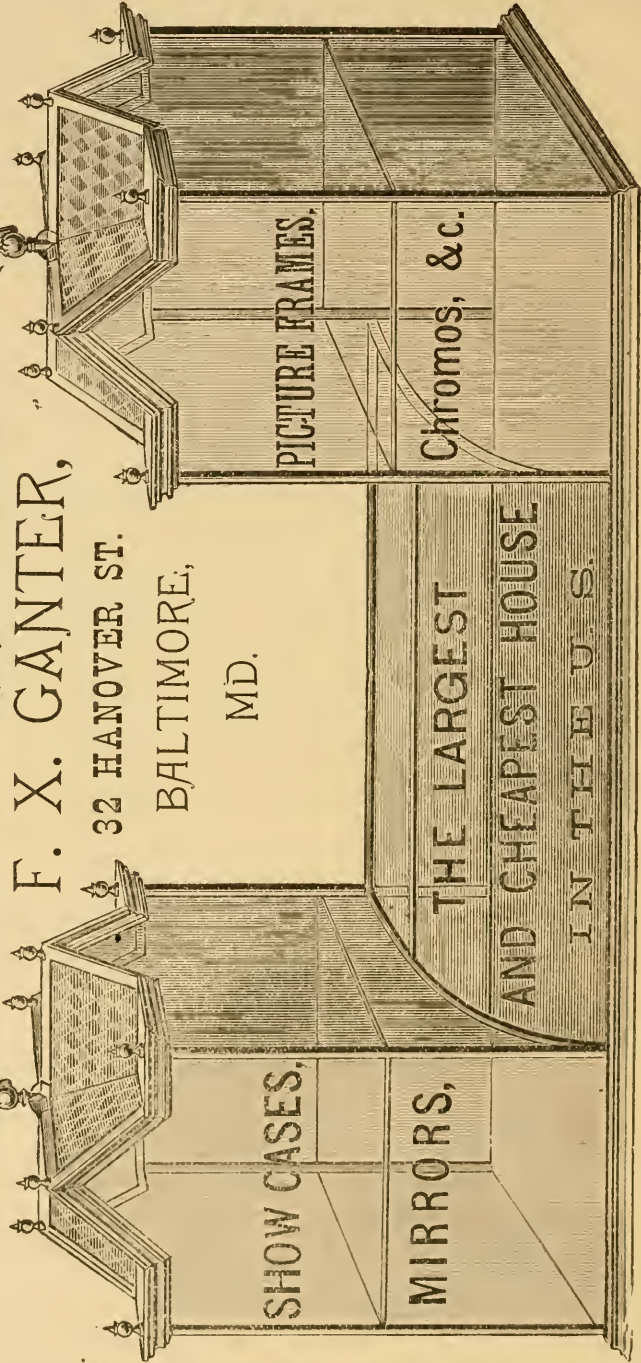


F. X. GANTER,

32 HANOVER ST.

BALTIMORE,

MD.



THE LARGEST
AND CHEAPEST HOUSE

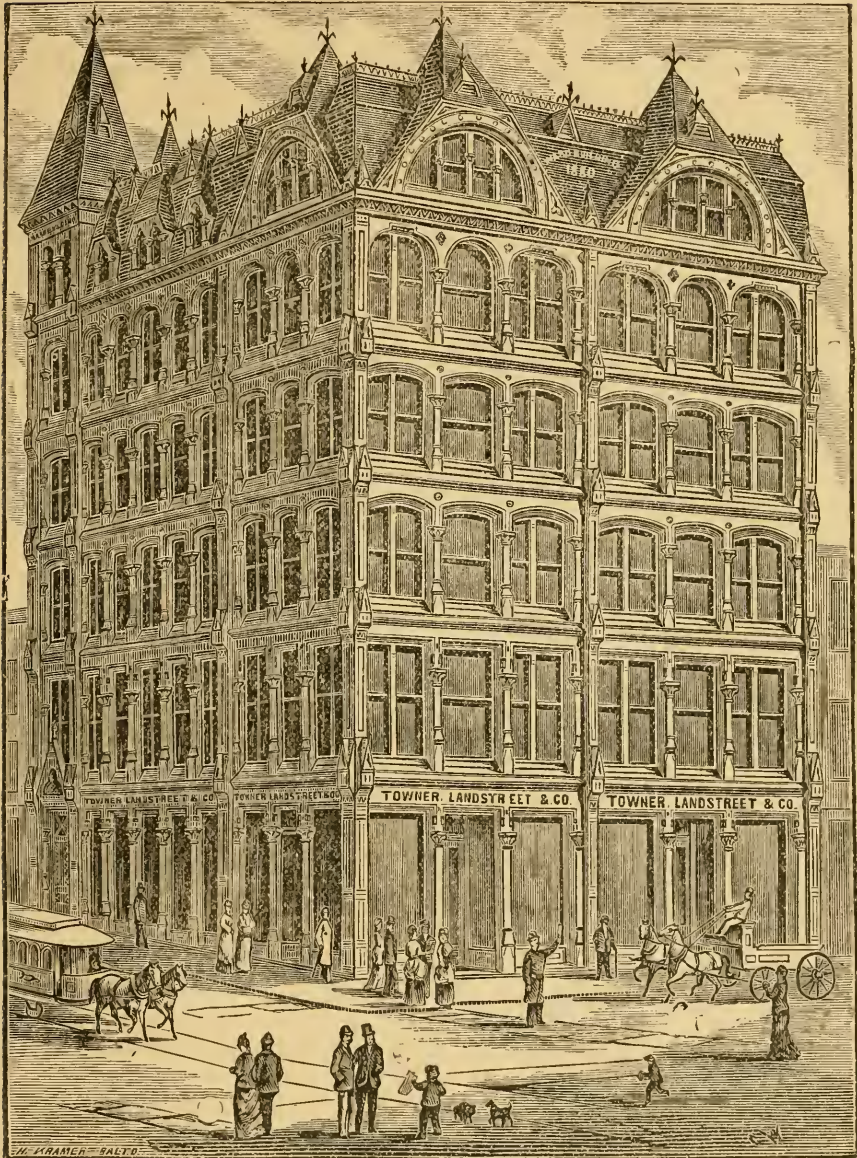
IN THE U. S.

PLEASE SEND FOR CATALOGUE AND PRICE LIST.

I SELL CHEAPER AND GIVE MORE SATISFACTION THAN ANY OTHER HOUSE IN THIS LINE.

GOODYEAR'S RUBBER HOUSE,

N. E. Cor. Charles and Baltimore Sts.



Towner, Landstreet & Co.

224 and 226 W. Baltimore Street.

**FINE CARPETS,
McDOWELL & CO.**

ARE DAILY RECEIVING NEW PATTERNS IN

Axminster, Berlin and Real Persian

CARPETS AND RUGS

WOVEN IN ONE PIECE.

French Moquettes, Extra Quality Axminsters,
Wiltons, Royal Velvets, Brussels
and Tapestries,

IN NEW COLORINGS AND AT ATTRACTIVE PRICES.

Extra Heavy English Oil-Cloths,

THREE-PLY TAPESTRY INGRAINS,

Extra two-ply Carpets, Rugs, Mats, Etc., Etc.

A Visit of Inspection will amply Repay.

LIGNUM, the New Floor Covering.

264 WEST BALTIMORE STREET,

BALTIMORE.

OPPOSITE HANOVER STREET

THE VISITORS' GUIDE TO THE CITY OF BALTIMORE.

FIRE ALARM STATIONS—*Continued.*

| BOX. | LOCATION. | BOX. | LOCATION. |
|------|------------------------------------|------|--------------------------------------|
| | 5 | | 6 |
| 5 | German and Light. | 6 | Calvert and Lombard. |
| 51 | Pratt and Light. | 61 | Light and Lee. |
| 512 | Charles and Lombard. | 612 | Montgomery and William. |
| 513 | Pratt and Sharp. | 613 | Hughes and Covington. |
| 514 | Pratt and Eutaw. | 62 | Light and Cross. |
| 516 | Ostend and Warner. | 621 | Cross and Covington. |
| 52 | No. 2 Engine House, Barre st. | 63 | Light and Gittings. |
| 521 | Camden and Charles. | 64 | Light and Heath. |
| 523 | Eutaw and Conway. | 65 | Hanover and Wells. |
| 53 | 10 Engine House, Columbia ave. | 67 | Hanover and Jephson. |
| 531 | Fremont and Columbia. | | 7 |
| 532 | Barre and Warner. | 7 | No. 12 Eng. Fort av. and Johnson St. |
| 534 | Ridgely and Hamburg. | 71 | Fort av. and Burrough st. |
| 54 | SOUTHERN POLICE STATION, Sharp st. | 72 | Covington and Donaldson. |
| 541 | Eutaw and Henrietta. | 73 | Fort av. and Dry Dock. |
| 542 | Eutaw and West. | | 8 |
| 56 | Leadenhall and Hamburg. | 8 | Nicholson and Hull. |
| 561 | Leadenhall and Ostend. | | |

AMUSEMENTS.

Academy of Music—Howard Street, between Franklin and Monument Streets.

Ford's Grand Opera House.—Corner Fayette and Eutaw Streets.

Front Street Theatre—Variety and Dramatic—Front Street, near Gay Street.

Holliday Street Theatre—Holliday Street, opposite City Hall.

Monumental Theatre—Baltimore Street Bridge.

ESTABLISHED 1852.

JOEL GUTMAN & CO.

Importers and Dealers in

SILKS LACES *HOSIERY*

DRESS GOODS AND SUITS,

WRAPS, TRIMMINGS, UNDERWEAR, GLOVES.

HOUSE-KEEPING GOODS, &c.

30, 32, 34 AND 36 NORTH EUTAW STREET,
BALTIMORE.

ESTABLISHED 1816.

CHAS. SIMON & SONS,

FOREIGN AND DOMESTIC

Dry Goods,

No. 63 NORTH HOWARD STREET,
BALTIMORE.

Would call attention to their splendid assortment of

DRESS GOODS,

BLACK AND FANCY SILKS,

LINENS, DAMASKS,

EMBROIDERIES, LACES AND HOSIERY,

THOMPSONS' GLOVE FITTING AND THE BEST IM-
PORTED CORSETS.

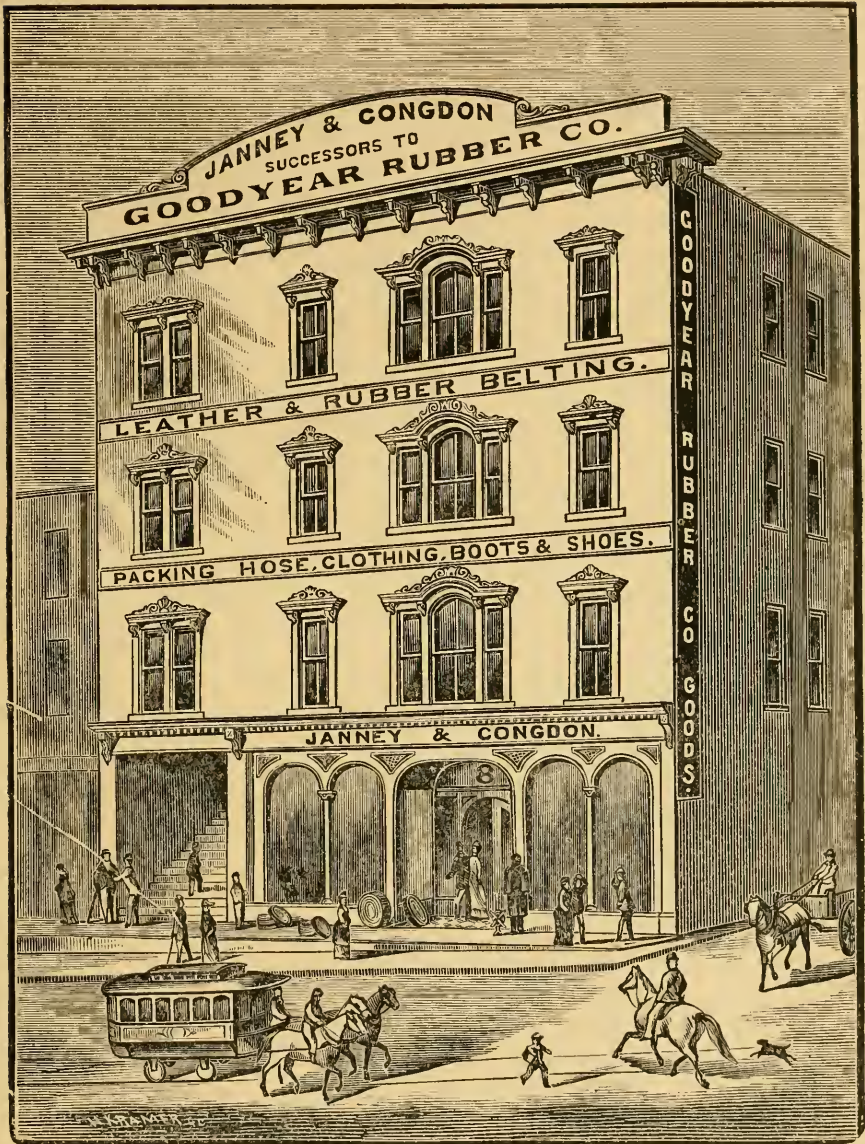
THE BEST ASSORTMENT OF

MOURNING GOODS

IN THE CITY.

JANNEY & CONGDON,

Successors to GOODYEAR RUBBER CO., Baltimore.



JANNEY & CONGDON,

Manufacturers' Agents and Dealers in every description of

GOODYEAR'S RUBBER GOODS,

No. 8 N. CHARLES STREET, BALTIMORE, MD.

LIKES, BERWANGER & CO.

MEN'S, YOUTH'S BOY'S AND CHILDREN'S

CLOTHING,

216 AND 218 WEST BALTIMORE STREET.

ONE PRICE TO ALL.

THE VISITORS' GUIDE TO THE CITY OF BALTIMORE.

JOHN B. PIET & CO.

BALTIMORE.

Steam Power Printers,
PUBLISHERS AND STATIONERS.

A TABLE

Indicating Difference of Time between Washington and Principal Cities.

When the Clock is 12, noon, at Washington, it is at

| | | | |
|-------------------------|-------------|----------------------------|-------------|
| Albany, N. Y. | 12.13 P. M. | Milwaukee, Wis. | 11.16 A. M. |
| Annapolis, Md. | 12.02 " | Mobile, Ala. | 11.16 " |
| Atlanta, Ga. | 11.30 A. M. | Montgomery, Ala. | 11.23 " |
| Augusta, Me. | 12.29 P. M. | Nashville, Tenn. | 11.21 " |
| Baltimore, Md. | 12.02 " | New Haven, Conn. | 12.16 P. M. |
| Bangor, Me. | 12.33 " | New Orleans, La. | 11.08 A. M. |
| Boston, Mass. | 12.24 " | New York, N. Y. | 12.12 P. M. |
| Buffalo, N. Y. | 11.52 A. M. | Niagara Falls, N. Y. | 11.52 A. M. |
| Cairo, Ill. | 11.12 " | Norfolk, Va. | 12.03 P. M. |
| Cape May, N. J. | 12.08 P. M. | Omaha, Neb. | 10.44 A. M. |
| Charleston, S. C. | 11.43 A. M. | Philadelphia, Pa. | 12.07 P. M. |
| Chicago, Ill. | 11.17 " | Pittsburg, Pa. | 11.48 A. M. |
| Cincinnati, O. | 11.30 " | Portland, Me. | 12.29 P. M. |
| Columbia, S. C. | 11.44 " | Portland Oregon. | 8.56 A. M. |
| Columbus, O. | 11.36 " | Providence, R. I. | 12.22 P. M. |
| Denver, Col. | 10.08 " | Raleigh, N. C. | 11.50 A. M. |
| Des Moines, Iowa. | 10.53 " | Richmond, Va. | 11.58 " |
| Detroit, Mich. | 11.36 " | Sacramento, Cal. | 9.02 " |
| Dover, Del. | 12.06 P. M. | Salt Lake City, Utah. | 9.40 " |
| Fort Wayne, Ind. | 11.27 A. M. | San Francisco, Cal. | 8.58 " |
| Frankfort, Ky. | 11.29 " | Santa Fee, N. M. | 10.04 " |
| Galveston, Texas. | 10.49 " | Saratoga, N. Y. | 12.13 P. M. |
| Harrisburg, Pa. | 12.01 P. M. | Savannah, Ga. | 11.44 A. M. |
| Hartford, Conn. | 12.17 " | Springfield, Ill. | 11.10 " |
| Indianapolis, Ind. | 11.24 A. M. | Springfield, Mass. | 12.18 P. M. |
| Jackson, Miss. | 11.07 " | St. Augustine, Fla. | 11.42 A. M. |
| Key West, Fla. | 11.41 " | St. Louis, Mo. | 11.07 " |
| Knoxville, Tenn. | 11.32 " | St. Paul, Minn. | 10.56 " |
| Leavenworth, Kan. | 10.49 " | Trenton, N. J. | 12.09 P. M. |
| Little Rock, Ark. | 10.59 " | Vicksburg, Miss. | 11.05 A. M. |
| Louisville, Ky. | 11.26 " | Wheeling, W. Va. | 11.45 " |
| Lynchburg, Va. | 11.51 " | Wilmington, Del. | 12.06 P. M. |
| Memphis, Tenn. | 11.07 " | Wilmington, N. C. | 11.58 A. M. |
| Milledgeville, Ga. | 11.35 " | Worcester, Mass. | 12.21 P. M. |

GEO. KINNIER, JR. & CO.

SOUTHERN

Carriage, Wagon and Harness Repository

LARGEST ASSORTMENT OF

Carriages, Express Wagons & Harness

IN THE CITY.

Second-hand Carriages taken in Exchange.

40 S. HOWARD ST., between Lombard and Pratt,

BALTIMORE.

SPECIAL INDUCEMENTS TO THE TRADE.

FACTORY, KING STREET.

IF YOU WANT

A COMFORTABLE SHAVE

AND

YOUR HAIR CUT IN STYLE,

AT A MODERATE PRICE,

GO TO

W. T. Schultze's Barber Shop,

AT THE MALTBY HOUSE,

BALTIMORE.

DEPOT FOR SCHULTZE'S CELEBRATED HAIR DYE.

UNITED STATES MAILS.

RATES OF POSTAGE.

FIRST CLASS.—Letters and all other written matter, whether sealed or unsealed, and all other matter sealed, nailed, sewed, tied or fastened in any manner so that it cannot be easily examined, 3 cents per half ounce or fraction thereof. Postal cards, one cent each. Postal cards are unmailable with any writing or printing on the address side, except the direction, or with anything pasted upon or attached to them.

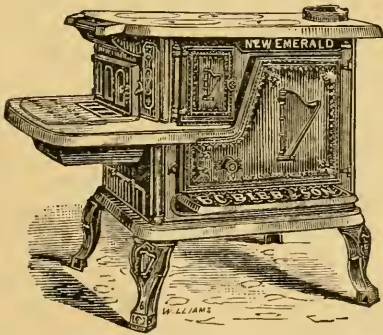
SECOND CLASS.—Only for Publishers and news agents.

THIRD CLASS.—Printed matter, in unsealed wrappers only, (all matter inclosed in notched envelopes must pay letter rates,) one cent for each two ounces or fraction thereof, which must be fully prepaid. This includes books, circulars, chromos, engravings, hand-bills, lithographs, magazines, music, news papers, pamphlets, photographs, proof-sheets and manuscript accompanying the same, reproduction by the electric pen, hectograph, metallograph, papyrograph, and in short, any reproduction upon paper by any process except hand writing and the copying press. Limit of weight 4 lbs., except for a single book, which may weigh more.

FOURTH CLASS.—All mailable matter not included in the three preceding classes which is so prepared for mailing as to be easily withdrawn from the wrapper and examined. Rate, one cent per ounce or fraction thereof. Limit of weight 4 lbs. Full prepayment compulsory.

Stoves! Stoves! Stoves!

BUY FROM THE MANUFACTURERS DIRECT.



We desire to call the attention of dealers and others to the superior line of Goods we are manufacturing at our Foundry and offering at attractive prices. The

NEW EMERALD COOK

embodies all the latest improvements, and is unsurpassed as a baker. Our Celebrated

FIRE PLACE HEATERS still remain ahead of all competition. We also manufacture a large variety of Cook and Heating Stoves, **FURNACES AND RANGES** adapted to the wants of all.

B. C. BIBB & SON,

FOUNDRY, PORT DEPOSIT.

BALTIMORE, MD.

W. H. GRAUE.

LOUIS WILKENS.

WILLIAM WILKENS & CO.

STEAM

Curled Hair and Bristle

MANUFACTURERS,

DEALERS IN

HAIR CLOTH, DAMASK, PLUSH

AND

UPHOLSTERERS, &c.

Cabinet and Coachmakers Materials

IN GENERAL.

No. 300½ WEST PRATT STREET,

BALTIMORE.

No. 217 PEARL STREET,

NEW YORK.

JNO. DUER & SONS,
IMPORTERS OF
UPHOLSTERY GOODS & CABINET HARDWARE.



No. 24 S. CHARLES STREET, BALTIMORE.

R. T. BANKS & SONS,

IMPORTERS AND DEALERS IN

CHINA, GLASS,

AND

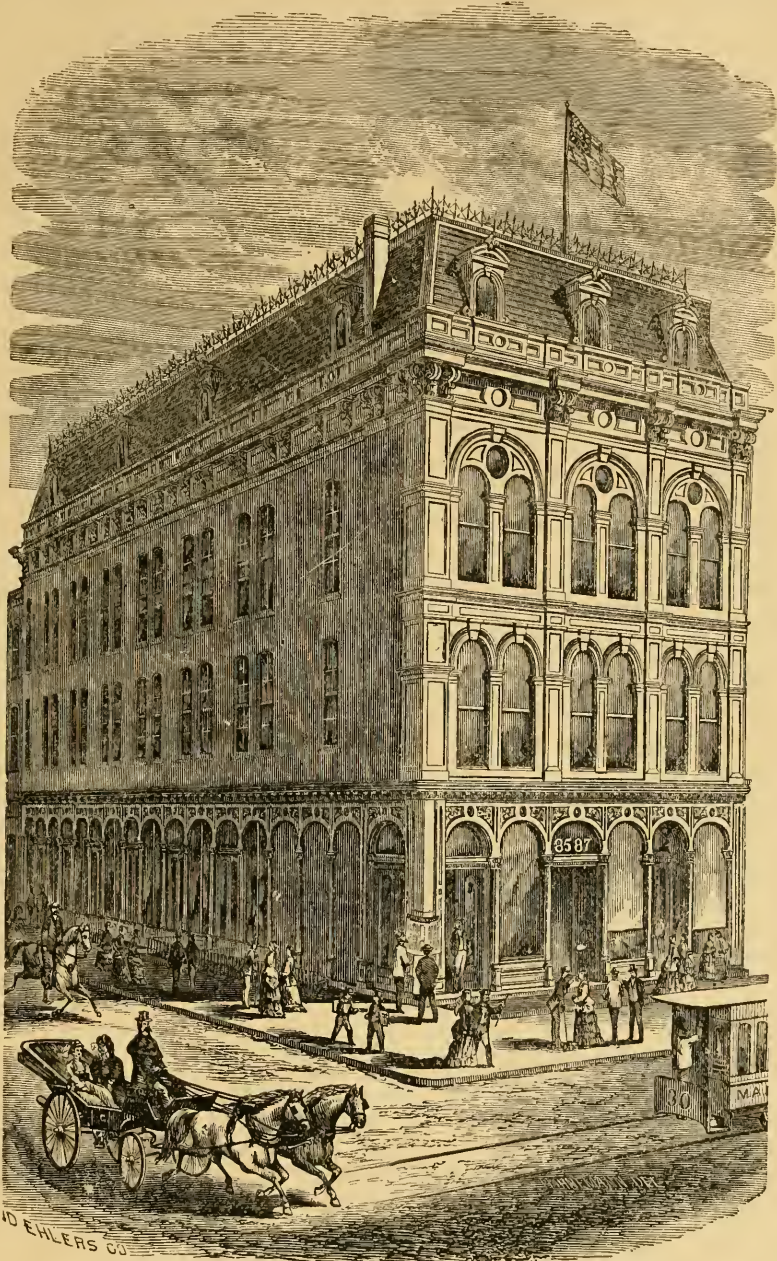
Queensware,

AND MANUFACTURERS OF

STONEWARE,

No. 26 LIGHT STREET,

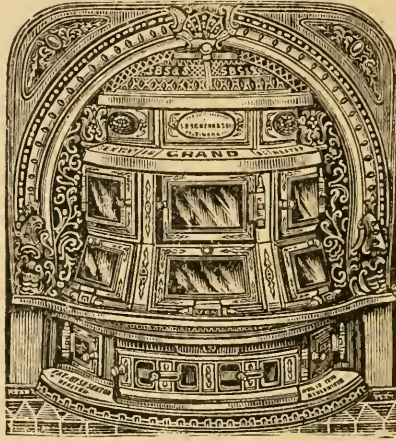
BALTIMORE.



GERMAN CORRESPONDENT BUILDING, COR. BALTIMORE ST. AND POST OFFICE AVE.

L. MEYER,
 Millinery, Fancy and Gents' Furnishing Goods,
 72 Hanover Street.

SEXTON'S GRAND HEATER, 1880 PATTERN.



The most powerful, economical, brilliant and cheerful Fireplace Heater in the market. Perfect in its operation, easily regulated and a perpetual burner. Beautiful design, and handsomely finished with nickel trimmings. Has all the latest improvements, also the principal features of the Original Baltimore Fireplace Heater (patented by S. B. Sexton,) which has been before the public for nearly twenty five years. We also manufacture ten different patterns of

BALTIMORE FIREPLACE HEATERS and a variety of
Furnaces, Ranges, Cooking and Heating Stoves,
Embodying the Latest improvements.

S. B. SEXTON & SON,

Office and Salesrooms, 115 W. Lombard St.

Foundry, Nos. 152, 154, 156, 158 and 160 Conway St., Baltimore.

N. B. & W. D. MERRYMAN,

FIELD AND GARDEN

Seeds

AND

Agricultural Implements,

85 S. CHARLES ST.

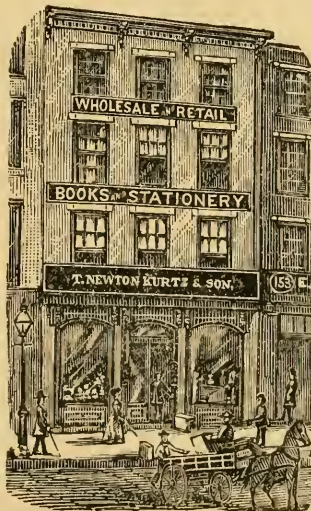
BALTIMORE. MD.

LOCATION OF WHARVES.

- Abraham's*—Thames Street, foot of S. Caroline Street.
Atlantic—foot of Patapsco Street, Canton.
Bowly's—Pratt Street, between South and Calvert.
Buchanan's—from 37 W. Pratt Street.
City—Intersection of Caroline and Lancaster Streets.
Commercial—from 97 Thames Street.
County—foot of Broadway.
Donnel's—foot of Fell Street, West side.
Dugan's—From 27 W. Pratt Street.
Henderson's—from 55 Fell Street.
Hooper's—foot of Wolfe Street.
Hughes, Quay—East end of Lee Street.
Kerr's—from 47 Thames Street.
Lee Street—from Light to Johnson Street,
Light Street—South from Pratt Street.
Long Dock—from Pratt, between Dugan's and McElderry's Wharves.
McClure's—between Commerce and South Streets.
McElderry's—Pratt Street, West of Mill Street.
O'Donnell's—from 35 W. Pratt Street.
Patterson's—between Patterson and Commerce Street.
Pratt Street—foot of South Calvert Street.
Pratt's—(Iron,) Boston Street, Canton.
Public—foot of Wills Street.
Shepherd's—foot of Broadway.
Smith's—foot of Gay Street.
Spear's—from 43 W. Pratt Street.
Spring Garden—foot of Eutaw Street.

1845.

F. Cap Paper,
 Record Cap Paper,
 Comm'l Note Paper,
 Letter Paper,
 Sermon Paper,
 Envelopes,
 Blank Books,
 Memorandum Books
 Pass Books,
 Copying Books,
 Pocket Books,
 School Books,
 Wrapping Papers,
 Bags, Twines,
 Steel and Gold Pens,
 and a full line of
 School Stationery.



1882.

Classical Books,
 S. School Books,
 Reward Cards and
 Tickets,
 S. S. Music Books,
 Church Music Books
 Hymn Books,
 Juvenile Toy Books,
 Bibles—a Great
 Variety,
 Prayer Books,
 Miscellaneous Books
 Photograph Albums,
 Inks and Mucilages.

151 W. PRATT ST.

Opposite Maltby House.

JOHN C. WEEMS & BRO.

MANUFACTURERS OF

CURLED HAIR HUSK,

AND

LOUISIANA MOSS,

DEALERS IN

BEDDING AND BEDDING SUPPLIES.

WAREROOMS, No. 112 NORTH HOWARD STREET,
BALTIMORE.

FACTORY, Homestead, Baltimore County.

Special attention given to Renovating FEATHERS by an
Improved Process.

ALFRED IJAMS,

JOBBER AND RETAILER OF

STAPLE AND FINE

FAMILY GROCERIES,

Imported and Domestic Liquors, &c.

125 NORTH HIGH STREET.

Goods securely packed and delivered free of charge to Depots and
Steamboat Wharves.

THE COURTS.

U. S. CIRCUIT AND DISTRICT COURTS.

FOURTH JUDICIAL CIRCUIT.

CIRCUIT COURT—Terms, First Mondays in April and November. Hon. Hugh L. Bond, Circuit Judge ; Hon. Thomas I. Morris, District Judge ; James W. Chew, Clerk ; Archibald Stirling, Jr., Esq., U. S. District Attorney ; A. M. Rogers, Assistant ; John M. McClintock, U. S. Marshal ; Isaac Brooks, R. Lyon Rogers and G. Morris Bond, Esq's U. S. Commissioners. Court Room, new U. S. Court House, corner North and Fayette Streets.

DISTRICT COURT—Terms, first Tuesdays in March, June, September and December. Hon. Thomas I. Morris, District Judge. The officers of this Court are the same as the officers of the Circuit Court. Court room, new U. S. Court House, corner North and Fayette Streets.

THE CIRCUIT COURTS OF MARYLAND.

EIGHTH JUDICIAL CIRCUIT—BALTIMORE CITY.

SUPERIOR COURT—Terms, Second Mondays in January, May and September, Hon. Robert Gilmer, Judge ; R. T. Allison, Clerk.

COURT OF COMMON PLEAS—Terms, Second Mondays in January, May and October. Hon. Geo. Wm. Brown, Judge ; I. Freeman Rasin, Clerk ; John B. Dempsey, Commissioner of Insolvent Debtors.

CIRCUIT COURT—Terms, Second Mondays in January, March, May, September and November. Return Day, second Monday in July. Hon. Geo. W. Dobbin, Judge ; James R. Brewer, Clerk.

CRIMINAL COURT—Terms, Second Mondays in January, May and September. Hon. Campbell W. Pinkney, Judge ; John H. Bullock, Clerk ; Chas. G. Kerr, States Attorney ; Edgar H. Gans, Deputy ; John F. Hunter, Sheriff.

CITY COURT—Terms, Second Mondays in January, May and September. Hon. Henry F. Garey, Judge ; Wm. F. McKewen, Clerk.

ORPHANS COURT—The Orphan's Court is in session every day (Sundays excepted) from 11 A. M. to 1 P. M., Hon. Nelson Poe, Chief Judge ; Hons. I. R. Carroll, and George W. Lindsay, Associate Judges ; Rob't T. Banks, Register of Wills.

ESTABLISHED 1837.

J. EDWARD BIRD & CO.

IMPORTERS AND DEALERS IN

Dry Goods, Ladies Wraps,
READY-MADE DRESSES,

LONG IDENTIFIED AND SHOWING ALWAYS A SUPERB COLLECTION OF

FOREIGN and DOMESTIC FABRICS,

AT LOWEST PRICES.

Have made Extensive Preparations for their

FALL AND WINTER TRADE,

And are now showing a Stock of Goods never before equaled
by them at

Surprisingly Cheap Prices.

ALL GOODS GUARANTEED as REPRESENTED

Any Article not turning out as represented being cheerfully
taken back and money refunded.



You are respectfully invited to visit us.

J. EDWARD BIRD & CO.

213 WEST BALTIMORE STREET,

BALTIMORE.

PUBLIC HALLS.

Masonic Temple, N. Charles Street, convenient to all the lines of City cars.
 Temperance Temple, N. Gay Street, near Baltimore St.
 Lehmann's Hall, N. Howard Street, near Richmond Market.
 Raine's Hall, corner Baltimore Street and P. O. Avenue.
 Broadway Institute Hall, Broadway Market, Broadway and Canton Av.
 Maryland Institute Hall, W. Baltimore Street, near the bridge.
 Turn Hall, No. 82 W. Baltimore Street.

EDUCATIONAL INSTITUTIONS.

Baltimore Manual Labor School, between Washington and Frederick roads, about two miles from the city.
 Baltimore Female College, St. Paul Street, near Saratoga.
 Notre Dame, (Convent) Aisquith Street, between Chew and Eager.
 McKim Free School, corner Baltimore and Aisquith Streets.
 St. Mary's College, (Catholic Theological Institute,) cor. Pennsylvania Avenue and Franklin Street.
 Loyola College, (Catholic) corner Madison and Calvert Streets.
 Baltimore City College, N. Howard St., adjoining Academy of Music.
 Eastern Female High School, Aisquith and Orleans Streets.
 Western Female High School, Fayette and Paca Streets.
 University of Maryland, (Medical) corner Green and Lombard Streets
 College of Physicians and Surgeons, cor. Hanover and Lombard Sts.
 Baltimore Dental College, N. Green Street, near Baltimore Street.
 Bryant, Stratton and Sadler Business College, No. 8 N. Charles Street.
 Baltimore Actual Business College, corner Baltimore and Charles Sts.
 State Normal School, No. 35 Franklin Street
 St. Mary's Industrial School for Boys, (Catholic) situated on the "Maiden's Choice" road, near Carrollton, 2½ miles from the city.

JAS. B. MACNEAL & CO.

Manufacturers and Dealers in

Burning, Machinery and Animal Oils

Alcohol, Cologne and French Spirits,

BUNGS, AXLE GREASE, CANS, &c.

34 S. CALVERT STREET,

BALTIMORE, MD.

J. L. STRAUS & BRO.

WHOLESALE

GROCERS, LIQUORS,

COMMISSION MERCHANTS,

AND DEALERS IN

SALT FISH.

No. 156 W. PRATT STREET,

1 and 2 HOLLINGSWORTH STREET,

1 and 2 GRANT STREET.

CONSIGNMENTS SOLICITED.



No matter what kind of Clothing you want or what amount of money you desire to pay for it, expect always to find in our immense stock just what you need.

C. N. OEHM & SON,
THE GREAT BALTIMORE CLOTHIERS,

230 W. PRATT ST., through to 55 HANOVER ST.

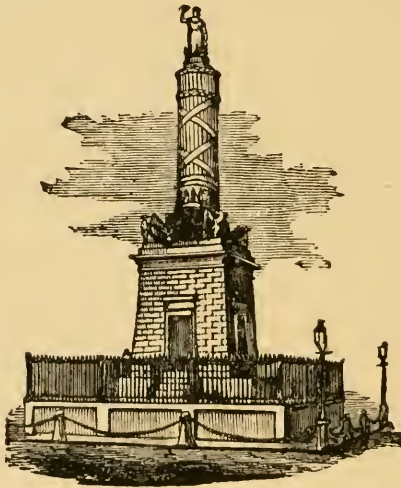
ESTABLISHED 1820.

**GADDESS BROTHERS,
STEAM MARBLE WORKS,**

Corner Sharp and German Sts.

Also, 110 S. CHARLES STREET,

BALTIMORE.



CEMETERY WORK A SPECIALTY.

MONUMENTS,

TABLETS AND HEADSTONES,

OF NEW DESIGNS AT MODERATE PRICES.

Orders by Mail Solicited.

CEMETERIES.



Baltimore—Office 8 South Street.

Baltimore—(Hebrew) Office corner Lloyd and Watson Streets.

Baltimore and Brooklyn—Office 271 Light Street.

Cathedral—Office 77 Mulberry Street.

**Greenmount*—Office 53 Lexington Street.

Holy Cross—Office St. Patrick's Church, Broadway.

Loudon Park—Office 19½ South Street.

Laurel—(Colored) Office 18 Courtland Street.

Mount Olivet—Office Basement Charles Street Church.

Mount Carmel—Office 187 South Broadway.

St. Peters—(Catholic) Office St. Peters Church, Poppleton and Hollins Streets.

*GREENMOUNT is Baltimore's most beautiful Cemetery, and accessible by York Road Line of Street Cars. Person's desiring to visit any of the above Cemeteries can obtain tickets by applying at their offices.

H. R. McNALLY & CO.

Importers and Dealers in

❖ SADDLERY ❖ HARDWARE ❖

222 W. BALTIMORE ST.

BALTIMORE, MD.

DRURY & RANKIN,

WHOLESALE AND RETAIL

GROCCERS,

COR. GAY AND HIGH STREETS,

Baltimore, Md.

N. B.—All Goods carefully packed and delivered at Steamboat Wharves and Depots, free of charge.

BALTIMORE COALTAR and MANUFACTURING CO.

Manufacturers of all the Products of

COAL TAR.

Roofs and Roofing Materials, Pavements and Paving Materials, Roofing Paper, Carpet Paper, Moth Paper, Building Paper, Black Gloss Varnish, Carbolate of Lime and Carbohc Acid.

WHOLESALE AND RETAIL.

TRADE LIBERALLY DEALT WITH.

33 CAMDEN STREET, BALTIMORE, MD.

C. HART SMITH, President.

PUBLIC BUILDINGS.

Board of Trade—Office, Merchants' Exchange Building, Second Street.

City Hall—North Holliday Street, between Fayette and Lexington.

City Jail—East Madison Street, East of Jones Falls.

Corn and Flour Exchange—South Street, corner of Wood.

Court House, (United States)—West Fayette Street, cor. of North.

Court House, (City)—St. Paul Street, between Fayette and Lexington.

Court House, (County)—Corner Lexington Street, and Monument Sq.

Custom House—Cor. Gay and Lombard Sts. EDWIN H. WEBSTER,
Collector, office hours from 9 A. M. to 3 P. M.

Law Buildings—S. W. corner Lexington and St. Paul Streets.

Maryland Bible Society—North Charles Street.

Maryland Institute, for the Promotion of the Mechanic Arts—Baltimore Street, near the Bridge.

Maryland Penitentiary—Square bounded by Madison, Forrest, Truxton Streets and Jones Falls.

Masonic Temple—North Charles Street, between Lexington & Saratoga.

Merchants Exchange—Second Street, adjoining Post Office.

Odd Fellows Hall—North Gay Street, above Baltimore.

Peabody Institute—South East cor. Monument and Charles Sts.

Record Offices—South East cor. St. Paul and Lexington Streets.

Weather Observatory—Corner South and Water Streets.

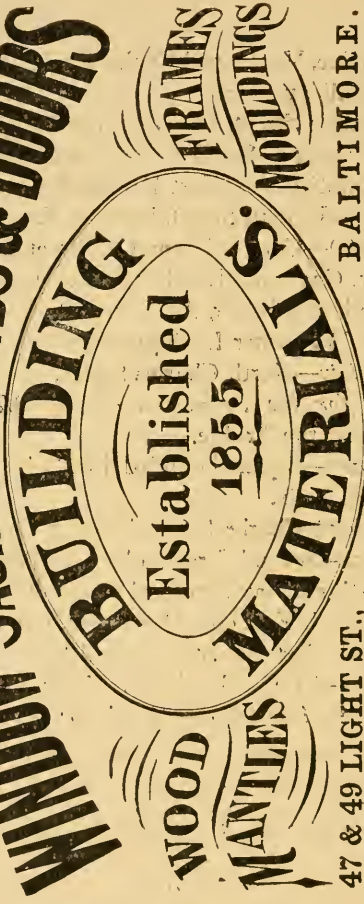
Young Men's Christian Association—N. W. cor. Charles & Saratoga Sts.

ANDERSON BROTHERS,
Importers of Hardware,

COR. PRATT AND LIGHT STS.

BALTIMORE.

**GEORGE O. STEVENS,
WINDOW SASHES, BLINDS & DOORS**

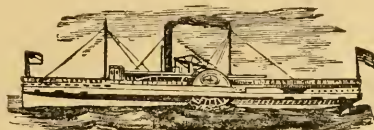


47 & 49 LIGHT ST.,

BALTIMORE.

OUR STOCK COMPRISES Window and Door Frames, Sash Weights and Cords, Hand Rails and Balusters, Novel Posts, Porch Trimmings, Cornice, Porch and Stair Brackets, Door Jambs, Ornamental Glass, Builder's Materials, Store Fronts, Bay Windows, &c. &c. Orders for Lince, Flooring, Shingles, Laths and Lumber of all kinds filled promptly at lowest Market Rates.

SEND FOR PRICE LIST AND CATALOGUE.



BAY AND COASTWISE STEAMERS.

Atlantic Coast Line—E. K. Burgess, Agent, 73 Smith's Wharf.
 Baltimore and Savannah Line—Jas. B. Andrews, Agent, 73 Smith's Whf.
 Baltimore and Newbern Line—Andrews & Co., Agts., 73 Smith's Whf.
 Baltimore and Havana Line—Mordecai & Co., Agents, 45 S. Gay St.
 Boston Line—A. L. Huggins, Agent, foot of Long Dock.
 Baltimore and Philadelphia Line—J. Alex. Shriver Agent, 3 Light St. Whf.
 Baltimore and Susquehanna Line—J. J. Taylor, Agent, 212 W. Falls Av.
 Chester River Line—R. A. Brainard, Agent, Pier 7 Light St. Wharf.
 Charleston Line—Mordecai & Co., Agents, 45 S. Gay Street.
 Eastern Shore Line—P. R. Clark, Agent, 105 South Street.
 Lower Potomac Line—138 Light Street Wharf.
 Maryland Steamboat Company's Line—H. B. Ensign, Pres, 98 Light St
 Richmond and York River Line—R. Foster, Agent, 90 Light St. Whf.
 Weems Line—Henry Williams, Agent, 118 Light Street.

ESTABLISHED 1800.

G. T. SÄDTLER & SONS,

❖ OPTICIANS ❖ AND ❖ JEWELERS ❖

212 W. BALTIMORE ST., BALTIMORE.

Spectacles, Eye Glasses, Opera and Field Glasses,

MICROSCOPES, &c.

Watches, Fine Jewelry, Silver and Plated Ware.

IMWOLD & MEHRING,

DEALERS IN

CARPETS,

Mattings, Oil Cloths, Etc.

328 W. BALTIMORE ST., N. W. Cor. Howard,

BALTIMORE.

ALEX. D. WATSON,

SOLE AGENT

AVERILL CHEMICAL

READY MIXED PAINTS,

MASURY'S FINE COACH COLORS, IN JAPAN,

Paints, Oils, Glass, &c.

* COACH * VARNISHES *

ALABASTINE, SUPERIOR TO KALSOMINE,

173 WEST PRATT STREET,

NEAR CHARLES STREET.

LIBERAL DISCOUNT TO TRADE.



NEW AMERICAN BUILDING, CORNER BALTIMORE AND SOUTH STREETS.

THE MUTUAL Life Insurance Company,

OF NEW YORK.

THE LARGEST LIFE INSURANCE CO. IN THE WORLD.

Send for our rates which are lower than other Companies.
A new form of Policy very liberal in terms is now being issued.

O. F. BRESEE & SONS, Gen'l Agts, American Building,
BALTIMORE.

L. BAR'S

TAILORING HOUSE,

COR. GAY AND FAYETTE STS.

NO MATTER WHAT YOU WANT TO GET IN THE

CLOTHING LINE,

WE WILL SUIT YOU.

EITHER READY MADE

OR

MADE TO ORDER

AND WILL

Guarantee Satisfaction.

ESTABLISHED 1790.

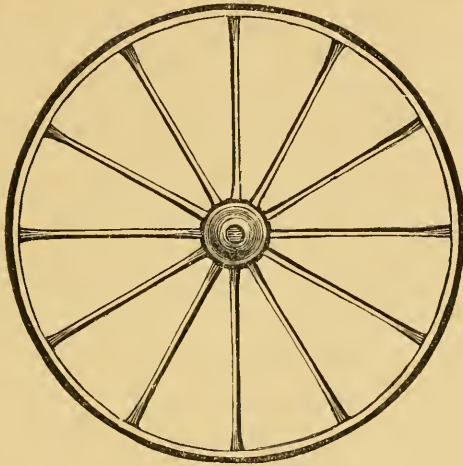
C. T. & C. B. MACKENZIE,

GENERAL DEALERS IN

CARRIAGE

AND

Wagon Materials,



Cast and Steel Thimble Skeins,

ENAMELED CANVAS, PATENT LEATHER,

Wheels and Wheel Stock, Axles, Shafts,

SPRINGS, CARRIAGE BOLTS, SEATS, MOSS, CASTINGS,
VARNISHES, DAMASKS, BLACKSMITHS' TOOLS, &c.

338 W. BALTIMORE STREET,

BETWEEN HOWARD AND EUTAW STS.

BALTIMORE.

Chas. W. Hamill & Co. Jas. H. F. Hiser.

Silver Plated Ware

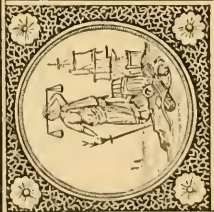
MANUFACTURERS, AND

FINE METAL WORKERS

WHOLESALE & RETAIL
ELECTRO GOLD & SILVER PLATING
AND REPAIRING OF ALL KINDS OF WARE.

Chas. W. Hamill & Co.

CALVERT & GERMAN STS. BALTIMORE



INDEX TO ADVERTISEMENTS.

| | | | |
|--|----|--|----|
| Anderson Bros., Hardware..... | 57 | Lereh Bros., Saddlery and Harness.. | 4 |
| Armstrong Cator & Co., Millinery | | Likes, Berwanger & Co., Clothiers.. | 38 |
| Importers..... | 3 | Mackenzie, C. T. & C. B., Carriage | |
| Balto. Coal Tar Manufacturing Co.... | 56 | Material..... | 63 |
| Balto. Mantel Co..... | 67 | Mackenzie, Geo. N., Saddlery Hard- | |
| Banks, Robt. T. & Sons, China, Glass | | ware..... | 29 |
| &c..... | 44 | Macneal, Jas. & Co., Oil..... | 51 |
| Bar, L., Clothing..... | 62 | McDowell & Co., Carpets..... | 34 |
| Bibb, B. C. & Son, Stoves..... | 41 | McNally, H. R. & Co., Saddlery and | |
| Bird, J. Edward & Co., Dry Goods.... | 50 | Hardware..... | 55 |
| Butler, Elijah, Merchant Tailor..... | 7 | Marden, Jesse, Scales..... | 18 |
| Chipman, Geo. & Co., Woodware..... | 14 | Merryman, N. B. & W. D. Agricultural | |
| Cushings & Bailey, Books & Stationery. | 12 | Implements..... | 46 |
| Dodd, Alex. & Co., Saddlery &c..... | 10 | Meyer, L., Millinery..... | 45 |
| Drury & Rankin, Grocers..... | 56 | Neal, Armstrong & Co., Dry Goods.. | 2 |
| Duer, John & Sons, Cabinet Hardware. | 43 | New York Mutual Life Insurance Co. | 61 |
| Dushane, Jno. A. & Co., Paper..... | 4 | Oehm, C. N. & Son, Clothiers..... | 53 |
| Gaddess Bros., Cemetery Work..... | 54 | Piet, John B. & Co., Publishers and Sta- | |
| Ganter, F. X., Show Cases..... | 32 | tioners, &c..... | 39 |
| Gault, M. & Son, Granite Works..... | 67 | Sadtler, G. T. & Sons, Opticians..... | 59 |
| Great China Tea Co., Tea and Coffee, | 18 | Schultze, W. T., Barber..... | 40 |
| Gutman, Joel & Co., Silks, &c..... | 35 | Sexton, S. B. & Son., Stoves..... | 46 |
| Hamill, Chas. W. & Co., Silver Ware, | 64 | Shriner, John P. & Co., Saddlery, &c. | 28 |
| Hennegen, Bates & Co., Jewelers.... | 6 | Simon, Charles & Sons, Dry Goods.. | 36 |
| Herring, O., Sons & Co., Carpets, &c. | 25 | Sisson, Hugh & Sons, Marble &c..... | 23 |
| Hirschberg, Hollander & Co., Paints | | Spencer, E. M., Ladies' and Children's | |
| Oils &c..... | 24 | Outfits..... | 20 |
| Holyland, J., Photographer..... | 14 | Stevens, Geo. O., Doors, Sash, &c.... | 58 |
| Hurst, Miller & Co., Boots and Shoes, | | Straus, J. L. & Bro., Grocers..... | 52 |
| Wholesale..... | 66 | Thomas, Jos. & Son, Builders Material, | 10 |
| Hutzler Bros., Notions &c..... | 26 | Towner, Landstreet & Co., Rubber | |
| Ijams, Alfred, Groceries, &c..... | 48 | Goods..... | 33 |
| Imwold & Mehring, Carpets..... | 60 | Wagner, J. & B. L., Green House Res- | |
| Janney & Congdon, Rubber Goods.. | 37 | taurant..... | 30 |
| Jenkins, Edward & Sons, Carriage and | | Waiker, Noah & Co., Clothiers..... | 21 |
| Wagon Repository..... | 16 | Walpert, Fred. & Co., Bedding..... | 26 |
| Justis & Armiger, Jewelers..... | 11 | Watson, Alex. D., Paints..... | 60 |
| Kinnier, George Jr., & Co., Carriages | | Weems, Jno. C. & Bro., Bedding, &c.. | 18 |
| and Buggies..... | 40 | Wilkins, Wm. & Co., Steamed Curled | |
| Kurtz, T. Newton & Son, Books and | | Hair and Bristle Manufacturers.... | 42 |
| Stationery..... | 47 | Williams, John H. & Co., Pumps, &c. | 28 |
| Lawson, Rob't & Co., Saddlery, &c.. | 22 | Wood, Wm. E. & Co., Stoves, &c..... | 8 |

S. ROSENTHAL & CO.

WHOLESALE AND RETAIL DEALERS IN

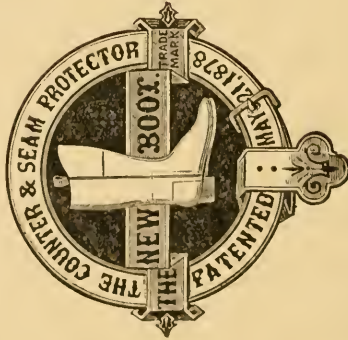
DRY GOODS,

No. 76 HANOVER STREET.

WELL SELECTED STOCK AT LOWEST PRICES.

Gold Medal
A. HURST, MILLER & CO.

AWARDED BY THE



MARYLAND INSTITUTE,

OCTOBER, 1878.

WHOLESALE DEALERS IN

BOOTS AND SHOES,

279 W. BALTIMORE STREET.

MILLER R. CREIGHTON,
JOHN A. LAWRENCE,
WILLIAM S. DISNEY.

Orders Carefully Filled and Satisfaction Guaranteed.

SOAP-STONE FOR FIREPLACES, &c

FLOORS OF HALLS AND VESTIBULES, CASING OF MANTELS,
HEARTHS, FIREPLACES,
And all descriptions of Decorative

TILES.

✽ BALTIMORE ✽ MANTEL ✽ CO. ✽

M. GAULT & SON, PROPRIETORS,

No. 75 NORTH HOWARD STREET.

MANTELS

OF MARBLE, MARBLEIZED SLATE AND HARD WOOD.

Marble and Slate for Skirtings, Steps, Counters, &c.

FENDERS, ANDIRONS and GRATES.

ESTABLISHED 1832.

M. GAULT & SON,

OFFICE, 432 W. PRATT ST., Cor. Penn.

STONE WORKERS,

YARDS,

Pratt and Penn Sts.

Pratt near Fremont,

Pratt near Paca.

Woodstock, Md.

GRANITE, MARBLE,

BLUE STONE & FREE STONES

For all kinds of Building, Street and Cemetery Work.

BLUE STONE FLAGGING FOR SIDE WALKS,

SLATE ROOFERS,

WORK DONE IN ALL PARTS OF THE COUNTRY.

ALL KINDS AND COLORS OF SLATE.

BUILDING FELTS.

LIBRARY OF CONGRESS



0 014 368 037 A ●



MANUFACTURED WITH RED HARDWOOD

MANTLES

ART AND LOOM TILES

THE WALLS OF
ART AND LOOM TILES
PERMANENTLY
LASTING AND EASY TO CLEAN

PENDERS, MIRRORS AND CASES

FOR
OR PIPES, LACES, WOOD, IRON, BRASS, ETC.

CRACKLING AND GLAZED

OR
OR

FOR
FORWARD TO BALTIMORE, MD.