

## **Historic, Archive Document**

Do not assume content reflects current scientific knowledge, policies, or practices.



6271

LIBRARY  
RECEIVED



Stromer's Mastodon.

Our Plants are  
**NOT DROUGHT  
 STUNTED—**  
*The Good Fortune of  
 Regular Rains in This  
 Particular Section*

**Hardy Northern  
 Grown Plants, Trees  
 and Shrubs**

*Spring 1931*

**South Michigan Nursery**

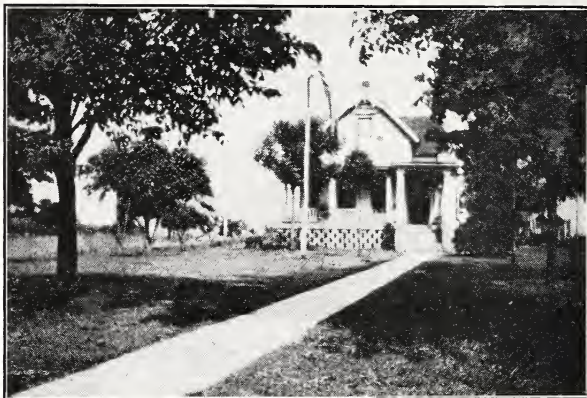
**GEORGE STROMER**

New Buffalo : : Michigan



# A Fruit Garden For Every Home

Our 1931 catalog comes to you with our greetings. During the past season our products have again proven their merit and profit to our customers as is evident by the great number of letters of praise we have received. You will probably receive a great number of catalogs this spring listing many varieties of fruits of every description, but just remember that **SOUTH MICHIGAN NURSERY** is offering only the best of each class—the kinds that produce the most and best crops of fruit, that thrive and show the most natural disease resistance. Every plant, tree, shrub and vine that we offer is State Inspected and found **FREE** from disease.



Our Home and Office.

Plan to have a fruit garden. The cost is so small and think of the joy of growing these things within the bounds of your own dooryard and the additional quality that is always developed when fruit is allowed to fully ripen before it is picked. It will pay you a hundredfold for your original small investment.

Varieties are an important consideration in planning either your fruit garden or your ornamental planting. Some of the old varieties are still in the first rank but many must give up their places for the newer and finer kinds. We are listing only varieties that we have personally tested and can recommend.

As you all know we have gone through one of the most severe droughts that this country has ever known; still right here in New Buffalo, Michigan, we have had plenty of rainfall with the exception of three weeks in July.

Our strawberry fields have made a wonderful growth, and we will have over two million plants to offer. These plants have not been stunted by the dry weather. They are full of pep, fully developed and will be sure to give satisfactory results. All other plants likewise, are not weakened by the drought. Our soil is a sandy loam with a water sand subsoil. By cultivating once a week we were able to hold plenty of moisture even through the three weeks in July when it did not rain.

All plants are dug fresh for each order. We do not dig more than can be shipped out each day. They are packed in clean moss and are either wrapped in waterproof and airtight paper or in wirebound crates that are light and cost very little to ship. They are guaranteed to arrive in growing condition.

## INFORMATION ABOUT ORDERING

For the past twenty-five years we have been growing strawberry, blackberry, raspberry, and other small fruit plants, both for fruit and plants.

We are located in the **GREAT FRUIT BELT** in Berrien County, Michigan, one and one-half miles from Lake Michigan, and three miles from the Indiana state line. M. C. R. R. & P. M. R. R. service.

**REFERENCE.** New Buffalo State Bank, New Buffalo, Michigan; American Railway Express agent, or Postmaster.

**REMITTANCE.** Our terms are cash with order. Or, we will book early orders, if one-third of amount is sent with orders, and balance payable April 1st or before plants are shipped. Remit by Draft, Post Office Money Order, Express Money Order, Registered Letter, or your personal check. Stamps may be sent for small orders. Never send coin by mail.

**HOW TO ORDER.** Use the order sheet or ordinary paper. Write plainly the amount of each variety wanted, name of each variety and price. (Write name and address plainly).

**MENTION HOW YOU WANT GOODS SENT.** Express or Parcel Post. We do not advise shipping live plants by freight. If you live over 500 miles away, express will be cheaper, except on very small orders.

**PARCEL POST SHIPMENTS WILL BE MADE C. O. D. FOR POSTAGE.** That is, you may order your plants to be shipped by parcel post, and pay your postman the postage upon arrival of plants. In that way your plants are automatically insured, so do not send money extra for postage. Will quote prepaid prices on request.

**HOW TO PLANT STRAWBERRIES:** For commercial planting we recommend that rows be about 3 feet 8 inches apart and plants set about 14-18 inches in the row, requiring about 8500 plants per acre. Holes for setting plants may be made with a dibble, trowel or an ordinary spade. Do not plow furrows and put plants in them, as that leaves the ground too loose for good results. For garden culture the rows may be made closer and for hill culture the plants may be planted about 24 inches apart each way.

**Our Guaranty** We guarantee every plant sold by us to be first class in every respect, free from any injurious diseases or insect, and true to name, and hold ourselves ready, upon proper proof, to refund or replace any that prove otherwise. It is mutually agreed between ourselves and the customers that we shall not be liable for a greater sum than the amount paid us for the plants. Not responsible for crop damaged by weather, fire or floods.

**OUR PRICES** are F. O. B. New Buffalo, Michigan, unless otherwise specified.

**SHIPPING SEASON** begins about March 25 and continues to about May 15, depending upon the weather conditions. We use our own judgment. Always mention date you want your plants shipped, and we will get them out for you as near as possible to that date. Prompt shipment is our motto.

**C. O. D. SHIPMENTS.** As a rule we do not make C. O. D. shipments unless one-third has been sent with order.

**CERTIFICATE OF INSPECTION** with every shipment. 10 per cent discount allowed in **FREE STOCK**.

**SPECIAL PRICES.** If you are going to plant a large number of plants, trees or shrubs, send us a list of the stock you want for quantity prices.

PLANTS REQUIRED TO SET AN ACRE			Plants
Strawberries (commercial use)	.3 ft. 8 in.	x 1½ ft.	7,920
Strawberries (garden use)	2½ ft.	x 1½ ft.	11,600
Strawberries, Everbearing	2½ ft.	x 1½ ft.	11,600
Black Raspberries	7 ft.	x 3½ ft.	1,777
Red Raspberries	6 ft.	x 3 ft.	2,420
Blackberries	7 ft.	x 3½ ft.	1,777
Dewberries	6 ft.	x 3 ft.	2,400
Currants and Gooseberries	5 ft.	x 4 ft.	2,200
Grapes	8 ft.	x 10 ft.	540
Grapes	8 ft.	x 12 ft.	440



# ORDER EARLY

## This Spring

Never before has there been such a shortage of strawberry plants. Nearly every fruit section of the UNITED STATES has been affected by the drought. If you do not have all the money handy, we will book your order for one-third down payment, and we will notify you when the plants are ready to ship and you may send the balance. Don't delay. You may be too late. In 1928 there was a shortage on Mastodon, and we had to return all money after April 15th.

**Important** Every plant we offer is perfect flowering and does not require mating. We have eliminated all female or pistillate varieties as we do not consider them desirable for either home use or commercial purposes. You can grow any variety we offer, alone, with good results, or several together if you prefer.

Why pay more. No better stock can be bought at any price. We dig Right, grade Right, pack Right.

We can reach the Pacific coast in 5 days and the Atlantic coast in 3 days. Direct through Express and Parcel Post service out of New Buffalo.

Idle Dollars Make  
Idle Men—Spend  
a Few Dollars for  
Plants.

### MICHIGAN STATE DEPARTMENT OF AGRICULTURE

Orchard and Nursery Inspection

CERTIFICATE OF NURSERY INSPECTION NO. 4449

This is to Certify that the Nursery Stock of South Michigan Nursery, New Buffalo, has been examined and found to be apparently free from dangerous insects and dangerously contagious tree and plant diseases.

Fee paid, \$7.50.

HERBERT E. POWELL, Commissioner.

This Certificate to be void after September 15th, 1931.

Bureau of Agricultural Industry,

A. C. Carton, Director.

Lansing, Mich., August 28th, 1930.

E. C. Mandenberg,  
In Charge of Orchard and Nursery Inspection.

NOTE—Change of dates or mutilation in any other way of this certificate renders it null and void.

Exact Copy of this certificate must accompany all shipments of stock.



One of Our New Ground Strawberry Plants.



This picture plainly shows that our plants are not drought stunted. Over a million plants in this field. Picture taken September 1, 1930. This is part of a 4-acre patch on new ground, and you can depend on it that these plants have long, fibrous roots, with heavy crowns that will spell SUCCESS wherever they are set. They are full of vim and vigor.



# Alfred, the New Coreless Blackberry

Originated by  
George  
Stromer

FOR many years, every berry grower, every nurseryman—in fact everyone at all interested in growing, selling or eating berries, have been patiently waiting, and hoping for a good dependable Blackberry. Since the passing of the old reliable variety Wilson, many varieties have come and gone. While some of them have given satisfaction in certain localities, not a single one has become a universal favorite. The perfect blackberry must combine quality, size, flavor, appearance, and productiveness with hardiness and adaptability to a wide range of soils and climates. Growers everywhere have long wanted a blackberry possessing those qualities.

## Here it is at last, THE ALFRED

Lack of space forbids describing in detail the many good points of this variety; however, I wish to call your attention to the outstanding reasons why the ALFRED is superior to all other varieties.

**BEARS SECOND SEASON:** ALFRED is such a healthy, vigorous grower that it produces a good crop of berries the year following planting. It is not unusual to pick 10 to 40 berries from the bush the same year planted.

**IMMENSE SIZE:** The berries are twice as large as ordinary Blackberries, many of them 1½ inches long, and the finest flavored of all blackberries. It is one ideal table berry because it is practically CORELESS, sweet and delicious. It is very small seeded.

**EXTREMELY HARDY:** ALFRED can be grown anywhere without winter protection, having withstood 30 degrees below zero, and not a single tip of a branch injured, while other varieties were frozen to the ground.

**EARLY SEASON.** This is one big feature of this variety. It ripens a week to ten days earlier than Eldorado and in productiveness it is in a class by itself. We have seen them bear a second crop. We picked many cases this year in September. As I watch the ALFRED year after year, I am more and more thoroughly convinced that the ALFRED BLACKBERRY WILL HAVE A PROMINENT PLACE IN THE VALUABLE FRUITS HALL OF FAME.

BLACKBERRY plants are different to propagate, and it will be years before there will be a supply of ALFRED plants. Plants will be pruned and ready to set out.

## How and Where I Found the ALFRED Blackberry

By GEORGE STROMER—Originator

Eleven years ago last August, while I was walking along an old abandoned right-of-way, I noticed an unusually large Blackberry bush growing near a former station called ALFRED. (This station was merely a junction). The ripe berries with which it was loaded were extraordinarily large. The following spring I called my discovery to mind, and thinking it might prove worth while, I dug it up from its native soil, and cut the roots so as to make three plants. These were planted in a rich soil where they grew vigorously all summer.

That following winter of 1918 was very severe in Michigan, the native state of the plant, but they withstood the heavy frosts, and 14 degrees below zero. Many young plants sprang up from the roots, the next spring I transplanted these, and cultivated them carefully. Year after year with diligent care I have propagated these plants to such an extent that the fruit is now being supplied to the local markets, at a fancy price, and is always in good demand. The average price received per 16-quart case was three dollars. I kept a record of one-half acre of these (one-year-old canes) and they made a return of \$198.00. The one-year-old canes that bore this crop were only from 18 to 24 inches tall, while the fruiting canes for next year are from 3 to 4 feet tall with wide spreading branches. Many canes are one inch in diameter, thus promising a much better return for next year.



Alfred Blackberry.

Last year from this record crop I measured a good many berries that were over one and one-half inches long, and three inches around. Several Nurserymen that have seen this half acre patch in fruiting season, claim that the ALFRED is the largest berry they have ever seen. Buy from the originator and get GENUINE ALFRED.

### ALFRED BLACKBERRY PRICES

25 for \$1.50; 50 for \$2.75; 100 for \$3.95; 250 for \$9.00; 500 for \$17.00; 1000 for \$31.50.  
Two-year-old bearing age plants for quick results. 6 for \$1.25; 12 for \$2.00; 25 for \$3.75;  
50 for \$6.25; 100 for \$12.00.





Premier Strawberries.

# Premier

The Most Popular Berry Ever Introduced

We picked 96, 16-quart cases from a patch of Premiers, 20 square rods in June, 1925, and frost killed one-third of them in blossom. The very best of all berries for early fancy trade. For big, early money, PLANT STROMER'S PREMIER. If you plant STROMER'S PREMIER you will get the first berries on the market. They will be bearing heavily before other varieties begin.

Your biggest picking will be when berries are in good demand and are bringing top prices. Premiers will grow anywhere. The plants are sturdy, and long rooted, a good drought resister. The berries are very large, and hold their size to the last picking. Premier is the only early variety that will do this. The flavor cannot be beaten in any variety. STROMER'S PREMIER is one of the best shippers that grows, on account of its firmness. BE SURE TO INCLUDE SOME WITH YOUR ORDER. Our prices are very reasonable for such a wonderful variety.

In Premier we offer you the greatest extra early Strawberry of all time. However, the early ripening of this variety is only one of its many good features. It is immensely productive and unlike other early ripening Strawberries the fruit produced by Premier is of the very finest quality, color, texture and flavor; and last but not least, every berry is large in size and uniform in shape. For every purpose that a Strawberry is wanted, Premier is supreme—eating, canning, preserving, local and distant market—no other variety can give you any more pleasure, satisfaction or profit. Premier succeeds everywhere and never fails to give a big crop of the very finest berries. It is frost-proof, drought-proof, and even fool-proof—producing its customary big load of fruit even under the most unfavorable conditions. The foliage is tough and healthy and grows tall and rank, covering the blossoms and berries and protecting them from frost and scalding sun. From every angle, Premier is solid gold, 18 karat, true-blue and will make big money for you. Prices on page 15.

<b>\$2.00</b>	
<b>City Lot Collection</b>	
Takes space 20x20 ft. Early to late.	
50 PREMIER .....	\$0.65
50 PEARL .....	.65
50 BEAUTY .....	.65
50 RED GOLD .....	.75
WORTH .....	\$2.70
<b>ALL FOR \$2.00—NO DISCOUNT</b>	

<b>\$5.00 Collection</b>	
A Money Maker	
200 PREMIER .....	\$1.70
200 BEAUTY .....	1.65
200 PEARL .....	1.70
50 HARVEST KING .....	1.00
WORTH .....	\$6.05
<b>ALL FOR \$5.00—NO DISCOUNT</b>	



Picking Premier.

Some Premier patches in Berrien County made \$1500 per acre. 8000 will set an acre. The plants will cost you only \$48.00.





Gardner's Red Gold.  
(Early).

Single berries get to be 7 and 8 inches around. Fruit stems get to be 10 to 15 inches high on good soil.

## Gardner's Red Gold *The Wonderful New Variety*

Red Gold is a revelation in the Spring varieties. The berries are simply enormous in size. Some of these measured eight inches around with two of them going entirely across the top of a quart berry basket. Color is shining red and they are full of delicious sweetness with that wild strawberry flavor. Does not contain the acid found in the common kinds. Eat all you like. Meaty, tender flesh, not pithy. Requires less sugar to make preserves. Many use only half the ordinary amount. Stems are very strong and stout, holding the berries out of the dirt. Stems are loaded with these mammoth berries. Red Gold plants make runners very freely. Root system goes down 12 to 15 inches. Fruiting season 30 days. Yields are very heavy. If you want a berry that is really marvelous, be sure to start this year with Red Gold.

Introduced by Gardner of Iowa. This berry is well known in the West and is very popular. Our prices are much more reasonable this year than they have ever been before, and we have a fine supply of healthy STATE INSPECTED plants in spite of the drought. Our method of moisture holding cultivation accounts for this. We had just enough rain to produce fine plants with long fibrous roots. See prices on page 15.





Cooper (Midseason).

get down to the moisture and enable the plants to carry every berry to maturity; a perfect balance for the heavy foliage, and loads of fruit. They are real drought resisters. **Strawberry prices, page 15.**

Grow

## Cooper

For Big Berries and  
Fine Flavor

More Popular Than Ever  
This Season

Strawberry growers for many years have been clamoring for a Strawberry that would combine large size and productiveness. We have it at last—that is just what we offer in the Cooper, the wonderful new variety that has created such a sensation in the horticultural world. Growers everywhere are discarding all other varieties in favor of Cooper.

Cooper is not only productive—it is the thriftiest growing Strawberry ever introduced. It is not unusual for the big, wide leaves to grow more than a foot high. This affords shade to the enormous loads of fruit and also is protection from frosts. The root system (which contains the energy of any plant), is the greatest ever developed by any variety of Strawberry. Long, strong, healthy roots that

## Kentucky Aroma

(Very Late)

This late Strawberry has long been a favorite market variety in Kentucky, Tennessee, Missouri and Arkansas, but is grown with equal success in every other part of the country. Usually commanding premium prices on all markets, it is one of the greatest of long distance shippers, owing to the supreme quality of the berries. It is also highly desirable and suitable for home use as there is something indescribably rich and pleasant about the flavor that commands the admiration of all.

Strawberry  
Prices on  
Page 15.

Kentucky Aroma  
Very Late.



10%

FREE PLANT OFFER

10%

We are not allowing any CASH discount this year, because our prices are very low, but we are allowing you 10% in FREE plants.

EXAMPLE: Your order amounts to \$12.60, 10% of \$12.60 is \$1.26. Select \$1.26 worth of anything in this catalog FREE OF CHARGE.



## World's Wonder (Extra Late)

World's Wonder has for years been known as the largest berry grown. They are best known in the East. Berries are too large to be pretty. Mild flavor, beautiful dark red, way to the core. One of the best keepers known. A great market berry. Will grow anywhere. A good plant maker, and a good money maker. Excellent shipper. Brought premier prices at the fruit market in Sawyer, Mich. Prices page 15.



World's Wonder.  
Extra Late.

East Lynn, Massachusetts.

Mr. George Stromer.

Dear Sir: I want you to know, that the vines of BLACKBERRY, GRAPE, STRAWBERRY you sent me pleased me very much. Plants are in as good growing condition as I have ever received from any nursery, larger rooted and more of them. Packed splendidly and priced very low.

Respectfully,  
CHESTER A. NEWHALL.

Girard, Kansas, February 25, 1929.

Dear Mr. Stromer: Last summer I picked 130 quarts of ALFRED blackberries off of 75 plants that were set out two years before and the birds must have gotten over one-fifth. I have tried all kinds of blackberries, but Alfred beat them all. They do well here on good soil if one will only take care of them.

W. L. WELLS.

## A Few \$1.00 Bargains

- 10 Baby Rambler Rose Bushes
- 12 Spirea (Bridal Wreath) Bushes
- 11 Gladiolus Bulbs
- 75 Mastodon (Everbearing) Strawberry Plants
- 100 Progressive or Champion Strawberry Plants

**500 Mastodon Free**  
See pages 12 and 13

**10% Discount in Free  
Plants** See page 7



Gladiolus Are Especially Suited for Cut Flowers.

## Gladioli

No garden is complete without them. They will grow in any garden soil with good sun exposure. Out of the hundreds of varieties we have undertaken to list the following because of their variety of colors and their proven worth.

This mixture is made up of the named varieties as follows.

- L'Immaculee. Best white.
- Golden Measure. Best yellow.
- Baron J. Hulot. Deep purple.
- Mr. Mack. Light blue; rare.
- Taro. American Beauty shade; ruffled.
- War. Deep blood-red.
- Schwaben. Light yellow.
- Loveliness. Large rich cream.
- Capt. Boynton. Large lavender.
- Tycko Zang. Very large salmon.
- Persia. Velvety maroon, splendid.

**11 Large Bulbs for \$1.00**

Sure to bloom this year. We know you can buy Gladiolus bulbs cheaper, but usually you get scrubby little things that have no names. With our collection you will get a new thrill each day.



# The New Blakemore Strawberry

*The United States Department of Agriculture Recommends It*

This wonderful new creation called the BLAKEMORE (U. S. D. A. No. 659) was originated from a cross of the Missionary and the Premier in the year 1923 by the United States Department of Agriculture. It was named in honor of Marcus Blakemore, president of the National Preservers Association. The berries are much firmer than the Premier, Missionary or the Klondike. The BLAKEMORE are slightly blunted conic with broad shoulders and slim neck. The shape of the Blakemore might vary some in different localities. Easy picking and hulling qualities. The berries are a beautiful bright glossy red color, with tough skin, firm flesh, with a wonderful mild flavor. Plants

make runners freely, and you are sure of getting a good fruiting row. They should be set about 24 inches apart. If set closer than that they will get too thick. It has been tried out and found to be two weeks earlier than Premier. It is a wonderful market berry. Why wouldn't it be? Think of it—two weeks earlier than Premier. The United States Department of Agriculture recommends it, and you should try it out in your state. There is a fortune to be made for the ones that buy Blakemore now. Uncle Sam would not recommend it if it was not good. Price, 25 for \$1.00; 100 for \$2.50. You will find a complete price list of all Strawberry plants on page 15.



Only \$2.50 per 100. Complete price list on page 15.





Pearl.

## Pearl (Late)

This extra late variety completes the circle we have been working on for so many years—a late Strawberry that could be depended upon to produce quality and quantity—a big paying crop regularly, under all conditions. Whether you are growing Strawberries for home use or for market a long fruiting season is desired and when you plant Premier, Cooper and Pearl you are planting the most profitable and longest-fruited combination it is possible to obtain. Because of its late blooming season Pearl is of the ideal variety for frosty locations. The immense foliage gives ample protection to both the bud and fruit. During our tests with this variety it has proven equally desirable for light or heavy soil; prolific in plant as well as fruit, it makes an ideal fruiting row under all conditions. The berries are large, uniform, solid and red clear through, and very attractive, with excellent flavor. Pearl prolongs your season and increases your profits; extra late berries always bring fancy prices. Prices page 15.

## Surplus Strawberry Plants

at \$3.25 per 1,000

During our digging season every spring, when we are getting out 30,000 or 40,000 plants every day, naturally, at the end of each day, there are a few plants of all varieties left. We never carry plants over from one day to another, so that these plants are classed as surplus plants. We offer them to you who do not care to have named varieties, at \$3.25 per 1000. We will not label these plants as to variety, simply calling them surplus plants. They are first class plants, fresh dug and will bear you a fine crop. The plant crop is short and we reserve the right to withdraw this offer at any time, so order this bargain early.

## Beaver (Early)

This fine early variety was originated by C. H. Beaver of Wisconsin, and named after him. Beaver has dark green foliage, very strong grower, with long roots, making it a fine drought resister.

Berries are deep glossy red, which extends clear to the heart of the berry. Berries are large. Fruit very firm, making it a fine commercial berry. Many leading growers are setting large acreage for canning factories. As a canner and shipper it ranks with Premier, but will bear heavier. Do not set Beaver too close in the rows as it is a very good plant maker. About 30 inches apart is right. Prices, page 15.



Beaver.

## Howard No. 17

A comparatively new variety which has been growing in a few of the Strawberry sections of the East for several years. The Howard 17 is a berry of the Premier type, staminate, and yields at times 15,000 quarts to the acre. Plants very vigorous with perfect foliage. Berries large, firm, very beautiful, and of delicious flavor. Season is very early to late. A Strawberry without a fault, one that will solve the variety question for both home use and market. This berry was produced after thirty years of scientific plant breeding, and after 25,000 seedlings had been originated. For prices see page 15.





Harvest King.

Strawberry prices, page 15.

## Harvest King (Midseason)

**The King of All June Bearing Varieties.** The greatest canning berry on record. Late Blooming Season Defies Spring Frosts! This wonderful new variety, which was introduced a few years ago by Henry Emlong & Sons, of Michigan, was originated in Northern Michigan, where late spring frosts are common, and where the summers are short. It is one of the toughest strawberries known. Just the thing, if you live in a locality where late spring frosts occur. The berry is a deep red color, delicious flavor, large in size, and is the best canning berry, as it retains its original flavor and dark red appearance even after cooking. Requires less sugar than any other berry except Red Gold.

**Heavier Bearing Qualities than Gibson or Dunlap.** Foliage is a healthy dark green. Leaves appear to have been varnished. Make a fruiting row like the Sen. Dunlap. It is a perfect flowering (Male) and can be grown alone. Harvest King sold for \$7.00 per 24-quart case on the Detroit market when Gibson and Dunlap sold for \$3.50. Get in on the ground floor and order at least a few hundred of these **Harvest King**, and try them out for yourself. You will not be sorry.

Prices on page 15.

## Beauty

A new variety. This is a new variety of great promise. Has an exceptionally heavy foliage with lots of fine, long roots, making it very adaptable to dry sections. Has good keeping qualities. Berries very large, solid clear through. Very juicy and flavor of the finest. This fine color, high flavor and bright green calyx make it most attractive and command the best prices on the market.

Originated in Three Rivers, Michigan, by a prominent nurseryman there. Beauty, the strawberry that keeps well. Named "Beauty" because it is more beautiful than any strawberry grown. Berries borne on extra long fruit stems. Ripens midseason. "Beauty" will make a beautiful row. A good plant maker. Fruit brings more money than Premier.



Beauty.





# MASTODON, The New Giant Everbearing

3 Full Crops  
in 18 Months

HERE IS HOW MASTODON DOES IT

1. Plant this spring—1930.
  2. Pick first crop—July to winter—1930.
  3. Pick second crop—June, 1931.
  4. Pick third crop—August to winter—1931.
- 3 BIG CROPS—  
3 BIG PROFITS

## A Real Wonder

It is the largest everbearing berry grown. Mastodon is the most prolific, the firmest, the most beautiful berry with the real strawberry flavor. It is a berry that bears early and late, one that can be picked all spring and summer. Many of the berries grow as large as a silver dollar, and are just as perfect. Mastodon is the real marvel in Strawberries; nothing like it has ever been known. Plants that were set in May this year, have produced as high as three quarts per plant. A field of this Mastodon in bearing is a sight never to be forgotten.

## Its Origin

MASTODON was originated several years ago by one George Vuer of Northern Indiana, who claims it is a cross between Superb and Prize. Out of many seedlings produced from this cross only one plant was worth saving, this one being the original Mastodon from which all others of its name have sprung, and from which source our original planting stock was secured. Below is one of the many letters we receive.

South Michigan Nursery,  
New Buffalo, Mich.  
Attention, Mr. Geo. Stromer.

Sanbornish, Wash., March 24, 1930.

Dear Sir: Just received your card of specials today and am enclosing small order. The reason I am only ordering small quantities is that I want to determine which varieties do best in this climate.

The Mastodons I received from you last year were the finest plants I ever saw and they made a wonderful yield. Am waiting to see how they perform this spring.

I had ordered 500 Mastodon from another grower prior to those I ordered from you but yours were by far the best plants and made more than double the yield, although set much later and only cost about half the price of the others.

Am going to do some canvassing among my neighbors and think I can move some of your plants at your special low prices. Loaned your catalog the other day to a Mr. E. S. Payne, who I think, will send you a small order.

Yours sincerely,  
J. E. BECK.

# MASTODON



Plant  
Mastodon  
and  
Be Convinced

When we tell you that Mastodon does produce three full crops in 18 months; it is the largest berry grown; bears in 90 days after planting; is an excellent shipper; brings more per quart; and is a delicious home use berry—you probably won't believe it unless you have grown them yourself—and we don't blame you, but read what other folks have to say.

Mastodon does not require special soil, care or petting. 18 to 35 berries fill quart box. Sell for 30c to 50c per quart. Mastodon sells like "hot cakes" on roadside stands. Commences to bear in 90 days after you set them. We picked 181 quarts of berries from 1½ acres on November 1 and 1 on November 2 the ground was frozen solid. This frost is what stopped the Mastodon. Light frosts will not injure them at all.

Perhaps you were one of the unfortunate ones, that received their money back on their order for Mastodon. I sent back thousands of dollars after April 1. The demand was so great for them.

We often have folks ask us "How many quarts will 100 Mastodon give us in a week?" We have watched our Mastodon fields this summer, and find that they will bear three quarts two times a week. If it

cool, they will not do quite so well. It takes about 8000 plants to set an acre so that makes 480 quarts per week per acre, and sell for 25c per quart, making \$120.00 per acre per week. Will bear good for about 8 to 10 weeks.

Your success or failure with any fruit will be determined by the quality of the stock you plant—therefore, you are more certain of success when you plant Stromer's Mastodon because every plant is vigorous and thrifty the crowns are sturdy, strong and prolific. See page 15 for Strawberry prices.

## WHOLESALE PRICES

We have 600,000 GENUINE Mastodon Everbearing Strawberry plants that are as fine as can be grown. Rather than sell our SURPLUS to other nurseries at wholesale prices, we are selling them to our many friends and customers, both new and old, at WHOLESALE prices. These Mastodon are the GENUINE, true strain exactly the same as those advertised over the Radio for twice the amount of money. 250 plants will supply enough berries for a family of five all summer long. 1000 plants should make you \$125.00 profit. TIMES ARE HARD. LET'S GO. TELL YOUR FRIENDS. Price list page 15.

100  
Mastodon

100  
Champion

For only  
\$2.10

**500 Mastodon**

**Free** to the person sending  
in a \$50 cash order for  
anything in this catalog. No other  
strings tied to this offer. I do it  
simply to encourage larger orders.  
You may club together with your  
friends and neighbors.





Lucky Strike.

everbearing strawberries grown. It is the most prolific of all. When you plant Champion you are certain of success because three months after planting every plant will commence bearing, and continue all through the summer and late in the fall. The runners will commence to bear, even before they have taken root.

We grow several acres every year for fruit, and we know what we are talking about. Make sure that you get the Genuine Champion. Order from us. We obtained our stock direct from the originator. You do not have to cultivate and care for them a whole year for nothing. You begin to harvest the crop three months after you get the plants from us. For instance, if you set them out the middle of April they will begin to bear by the middle of July.

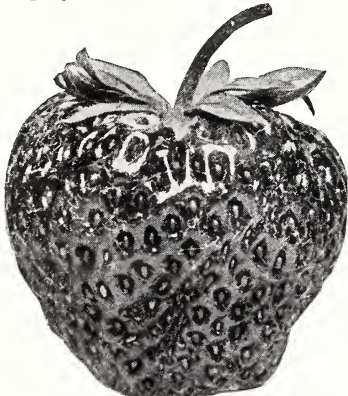
The originator claims U. S. record of 5,623 quarts that sold for \$2,059.20 per acre first year set.

## The New Bitter Root Everbearing

This variety is only a few years old and was originated in Montana. We fruited them the first time last summer; berries are large and hold their size the entire season, are very sweet, have only a few seeds, very firm; good plant maker and excellent shipper. We paid a high price to get started with these plants and have only a limited quantity to sell.

### Gibson Medium Late

Gibson has long been a favorite with commercial growers everywhere. It is not only a heavy cropper but a sure cropper—in fact during our many years acquaintance with Gibson we have never known it to fail to produce a profitable crop. The plants are large and healthy; foliage strong, upright and abundant. Fruit is of the very finest color, quality, flavor and appearance, selling well on any market and mighty fine for home use.



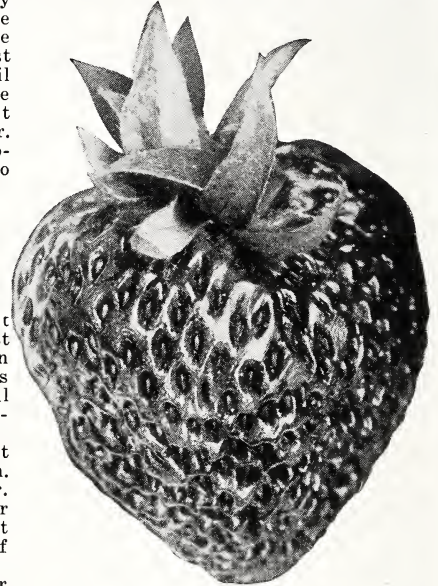
Bitter Root.

## Lucky Strike

This new everbearing strawberry was originated in Maryland. With us the Lucky Strike has done wonderfully. Very productive. Berries are round and smooth, very large and of a beautiful bright red. Sweet and firm. A fine variety for spring-bearing the second year, where frost kills the June bearing varieties. Would advise our customers to try Lucky Strike everywhere as a good fall and June bearer. Will bear first year set from July until winter with large, choice berries and the sweetest flavor you could wish for. Our new ground, true-to-name plants are sure to please you.

## Champion Everbearing

Champion, without doubt, is one of the best



Gibson.

## Progressive Everbearing

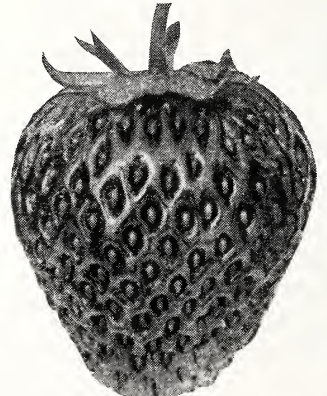
The standard Everbearing variety which will produce berries from June until November as far North as Duluth. Berries are of medium size—somewhat pointed, dark red in color and of exceptionally fine flavor. The flesh is extra firm and sweet, requiring but little sugar in preserving. This variety forms strong runners which bear heavily the first season and produce enormous crops. Blossoms on all everbearing varieties should be kept picked until July 15th, from newly set plants.

## The New Tuttle Strawberry

This variety came from California and was called The Tuttle Everbearing. It is not an Everbearer here in Michigan, but is very promising as a Spring bearing variety. Large dark red and glossy berries are borne on long fruit stems. Foliage strong and upright. Plants are large and deep rooted, making them a great drought resister. The flavor and quality of the Tuttle is excellent. Try a few plants of this variety.

## Senator Dunlap

During the past two decades Dunlap has made more crates and more dollars for Strawberry growers than any other variety. If you are looking for a "rough and ready" Strawberry that will thrive and produce a big crop of fine fruit, with but very little attention—plant Senator Dunlap. For home use this variety is unsurpassed, fresh from the vines. Canned or preserved Dunlap is equally delicious.



Progressive.

For prices on Strawberry plants and Grape vines, see page 15.



# Stromer's 1931 "Hard Times" Price List

**DISCOUNTS.** We are not allowing a cash discount, on account of our prices being so low to start with. We do not believe in putting the price way up and then allowing a 10% discount to early buyers, and a 2% discount to late buyers. This does not look fair to the late buyer, so we are going to allow you to select 10% of your order in additional Free Plants. (For example, if after you have figured up your order and find that it amounts to \$14.50, you may select \$1.45 worth more Free). This offer lasts throughout the whole season. The Free plants will be of the same high quality as the ones you pay for. That's fair, isn't it?

## Our Plants Are Not Drought Stunted

	Per 25	Per 50	Per 75	Per 100	Per 200	Per 250	Per 500	Per 1000	Per 2000
Mastodon. Everbearing	\$0.65	\$1.00	\$1.10	\$1.50	\$2.75	\$3.25	\$6.15	\$12.50	\$24.50
Champion. Everbearing	.40	.65	.75	1.00	1.75	2.00	3.95	6.95	12.00
Progressive. Everbearing	.40	.75	.85	1.00	1.75	2.00	3.95	6.95	12.00
Bitterroot. Everbearing	.50	.85	1.00	1.25	2.00	2.25	4.00	7.50	
Lucky Strike. Everbearing	.50	.85	1.00	1.25	2.00	2.25	4.00	7.50	
Tuttle	.35	.65	.85	.95	1.70	1.90	3.45	6.65	12.00
Premier. Early	.35	.65	.85	.95	1.70	1.90	3.45	6.65	12.00
Red Gold. Early	.50	.75	1.00	1.25	2.00	2.75	4.95	8.95	15.00
Cooper. Midseason	.50	.75	1.00	1.25	2.00	2.75	4.95	8.95	
Kentucky Aroma. Late	.40	.65	.85	1.05	1.65	2.15	3.45	5.95	
World's Wonder. Late	.40	.65	.85	1.00	1.50	2.00	3.00	5.75	10.00
New Blakemore. Early	1.00	1.50	2.00	2.50	5.95	6.95	9.95	17.50	
Pearl. Very late	.35	.65	.85	.95	1.70	1.90	3.45	6.65	12.00
Beaver. Early	.75	1.00	1.25	1.50	2.00	2.95	4.90	8.95	15.00
Howard No. 17. Early	.55	.85	1.10	1.35	1.75	2.55	4.00	7.75	12.50
Harvest King. Midseason	.75	1.00	1.40	1.75	2.50	3.00	5.50	10.50	
Beauty. Midseason	.40	.65	.85	1.05	1.65	2.15	3.45	5.95	10.50
Gibson. Midseason	.25	.50	.70	.85	1.50	1.90	2.50	4.65	9.00
Senator Dunlap. Early	.25	.50	.70	.85	1.50	1.90	2.50	4.65	

### GRAPE PLANT PRICES

	Each	6	12	25	100	500	1000
Salem (Red). 2 yr. No. 1 Fancy	\$0.25	\$1.25	\$2.25	\$3.95	\$11.95		
Delaware (Red). 2 yr. No. 1 Fancy	.20	1.00	1.95	3.75	10.95		
Agawam (Red). 2 yr. No. 1 Fancy	.20	1.00	1.95	3.75	10.95		
Champion (Black). 2 yr. No. 1 Fancy	.15	.85	1.20	1.95	6.00	28.00	49.00
Niagara (White). 2 yr. No. 1 Fancy	.20	1.00	1.95	3.75	10.95	49.50	
Moore's Early (Blue). 2 yr. No. 1 Fancy	.15	.85	1.20	1.95	6.00	28.00	49.00
Concord (Blue). 1 yr. No. 1 Large	.10	.45	.75	1.25	3.95	15.00	29.50
Concord (Blue). 1 yr. No. 2 Medium	.07	.30	.55	1.00	2.65	9.95	18.50

**COMPLETE SATISFACTION GUARANTEED OR YOUR MONEY BACK. YOU CAN PAY TWICE AS MUCH FOR PLANTS, BUT THEY WILL BE NO BETTER. OUR PLANTS ARE FIRST CLASS AND TRUE TO NAME.**

## GATOR-HIDE MULCH PAPER NO WEEDS—NO HOEING HOLDS MOISTURE



Mulch paper increases soil warmth, conserves soil moisture, and does away with the drudgery of weeding and cultivating. It is a scientific means of increasing production at a lower labor cost. Easy to handle; strawberries will respond to its use with good results, as will many other small fruits as well as vegetables.

### Price:

Rolls 18 in. wide, 45 ft. long—enough for 50 plants.

**\$1.25**

**50 Mastodon and Roll Mulch Paper for \$2.00**



Set Through Mulch Paper.



No Paper.

## Victoria Rhubarb or Pieplant

(PEACH FLAVORED)

Fine for Pies

Rhubarb should be grown in every garden, as it provides material for early spring pies and fresh table sauce. It is also valuable for canning. Plant a few roots this spring, sure, and you will have a supply of this early "fruit" next year. This wonderful new variety differs greatly from the old "pie plant." The stems are very large, tender, with a mild, sub-acid flavor. Yields abundantly and much earlier than the older common varieties. Our roots are strong and priced right—include a few in your order this season.

Prices: 1-year large roots, 15c each; 6 for 60c; 12 for \$1.00; 25 for \$1.85; 100 for \$6.85.

## Washington Asparagus

There is no variety of Asparagus as good as Washington, and whether you are growing for home use only or for market, you cannot afford to grow any other. This wonderful new Asparagus was developed and introduced by the United States Department of Agriculture, and although it is just a recent introduction, it has become famous the country over.

Growers everywhere are disregarding all other varieties in favor of the famous Washington, because it is earlier, the stalks are larger, more tender, more productive than any other variety, and last but not least, WASHINGTON IS IMMUNE TO RUST, which means that one planting will produce profitable crops, for many years.

Prices: 2-year large roots, 25 for \$1.25; 50 for \$1.75; 100 for \$1.95; 500 for \$7.50; 1000 for \$14.00.



# Ornamental Shrubs

## Althea

**ALTHEA** (Rose of Sharon). Tree form. Grows on all soils. Large double flowers that will completely cover the tree in late summer till frost. We offer mixed colors. 2-yr. trees for 50c each.

## Berberis

**BERBERIS atropurpurea** (Red Leaf Barberrry). Similar to *B. Thunbergi* in all respects except that the foliage is of a bronzy red color which turns to fiery red in autumn. Excellent for contrast in the shrubbery border. A new and perfectly hardy introduction. Plant in full sun for best results. 12 to 15 inches. Each, 65c; 10 for \$4.95.

## Catalpa

**CATALPA BUNGEI** (Umbrella Tree). Grafted on straight 6- to 8-ft. stems, an umbrella-shaped top without pruning. Heart-shaped leaves of glossy deep green color. The trees are perfectly hardy. They are usually planted in pairs, one on each side the walk. Each, \$1.10 or 2 for \$2.00.

## Celastrus

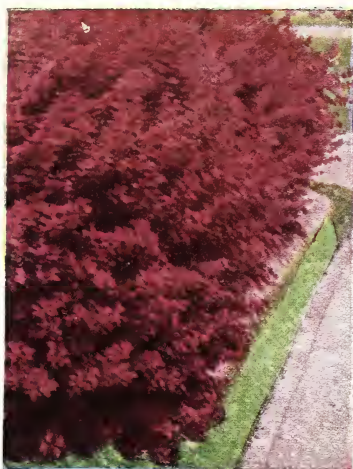
**CELASTRUS scandens** (American Bittersweet). A high climbing vine with broadly lanceolate bright green leaves. Fruit-capsules orange-yellow, with crimson arils, persisting throughout the winter. The unopened mature capsules will quickly open when cut or partially dried. Each, 45c.

## Deutzia

**DEUTZIA, Pride of Rochester.** A showy, early and large flowering sort, that blooms in May before the others. Grows six to eight feet tall. The white flowers are large and double, tinted with pink. Fancy plants. Each, 50c.

## Forsythia

**FORSYTHIA** (Golden Bell). A vigorous grower with slender, erect or arching branches. 8 to 12 feet. Considered by many to be the best of the family. 2- to 3-ft. plants, 35c each; 3 for \$1.00.



New Red Barberrry.

## Hydrangea

**HYDRANGEA arborescens** (Snowball Hydrangea). Has the appearance of a low-growing Snowball with its large flat clusters of white flowers in June and July. The most hardy of the Hydrangeas and especially useful for shady places. Grows 6 to 8 feet. 12- to 18-in. plants, 45c each; 3 for \$1.25.

**H. paniculata grandiflora.** May be planted in hedges, beds, groups, scattered among other shrubs in massed plantings, or planted alone as a specimen. Flowers in August, in huge panicles from 8 to 12 inches long, of a delicate pink, changing to bronze and lasting until autumn. 12- to 18-in. plants, 40c each; 3 for \$1.10.



Spirea Anthony Waterer.

## Ligustrum

**LIGUSTRUM amurense** (Amoor River Privet). A valuable ornamental shrub for hedges and borders. Very hardy foliage; glossy green, and holds its color almost the entire year. Will stand clipping to any extent. 8 to 12 feet. 12 to 18 inches, right size to start hedge. 10 for \$1.00; 50 for \$3.00; 100 for \$5.85.

## Philadelphus

**VIRGINAL MOCK ORANGE** (Philadelphus, v'irginal). The most beautiful white flowering shrub introduced in the last quarter century. Exceeds all other Mock Orange in beauty and form; unusually large, double white flowers, often 1½ inches across, in clusters of five to seven in a group. Rich perfume, rivaled only by that of orange blossoms. Blooms in June and continues over a long period. Compact grower of 6 to 8 ft. Plants, 18 to 24 in., 50c each; 3 for \$1.25.

## Spirea

**SPIREA Anthony Waterer.** Dwarf, bushy, of spreading type and fairly covered in July with large corymbs of rosy crimson flowers. If these are removed as they fade the bush will bloom at intervals until frost. Each, 45c; 3 for \$1.25.

**S. Billiardi** (Billiard Spirea). Grows 5 to 6 feet high and blooms in July and August. Flowers are bright pink. Plants, 2 to 3 ft., 35c each; 3 for \$1.00.

**S. van Houttei** (Van Houttei Spirea). Commonly known as Bridal Wreath. One of the most beautiful Spireas, with pure white flowers in clusters or panicles about an inch in diameter. Profuse in bloom; remarkably vigorous and hardy. Makes one of the best shrub hedges. Each, 15c; 12 for \$1.00. Extra fancy grade, 35c each; 6 for \$1.75; 12 for \$3.00.



Hydrangea Paniculata Grandiflora.



## Symphoricarpos

**SYMPHORICARPOS racemosus** (Snowberry). A slender-branched, upright-growing shrub with small, pink flowers, followed by showy, pure white berries, which cling to the branches a long time. Plants, 2 to 2½ ft., 35c each; 3 for 95c.

**S. vulgaris** (Indian Currant). Although this produces greenish red flowers in summer, the chief beauty is found in the wealth of red or purplish berries which follow the blooms and cling to the branches in winter. Plants, 2 to 2½ ft., 35c each; 3 for 95c.

## Syringa

**SYRINGA vulgaris** (Common Lilac). A large upright shrub with heart-shaped, bright green leaves. Flowers deliciously fragrant, varying from white to pink and shades of lilac, blue and purple. Large plants, 50c each.

## Viburnum

**VIBURNUM opulus sterile** (Common Snowball). A grand hardy shrub, with handsome showy flowers produced in large globular clusters. All the flowers are sterile and radiant, and appear in numerous compact balls in spring. An old-time favorite and without doubt one of the best of flowering shrubs. Plants, 2 to 3 ft., fancy, 60c each.



Spirea Van Houttei.

# Evergreens

## Colorado Blue Spruce

**PICEA pungens** (Colorado Blue Spruce). Very handsome and very hardy, symmetrical, with light, sometimes almost silvery white foliage; stout horizontal branches forming a broad, regular pyramid. 12 to 18 inches, 3-year transplanted, \$2.00 each. 10 to 12 inches, 3-year transplanted, \$1.50 each.



Colorado Blue Spruce.

## Norway Spruce

**PICEA excelsa** (Norway Spruce). From Europe. An elegant tree; extremely hardy, of lofty, rapid growth and pyramidal form. The branches assume a graceful, drooping habit when the tree attains 15 to 20 feet in height. One of the most popular evergreens for planting, either as single specimen trees or in masses for effect or shelter. It is one of the best evergreen hedge plants. 10 to 12 inches, 3-year transplanted, 55c each. 8 to 10 inches, 2-year transplanted, 15c each.

## Juniperus

**JUNIPERUS hibernica** (Irish Juniper). A distinct and beautiful variety, of erect, dense, conical outline, resembling a pillar of green; very desirable. 12 to 18 inches, 3-year transplanted, 85c each.

## EXTRA SPECIAL Baby Rambler Roses

When in bloom the bush presents the appearance of an assembled bouquet except for a glimpse here and there of the deep glossy green leaves. Flowers red and slightly fragrant. For a rose-hedge it has no superior among all Roses.

**15c  
each  
10 for  
\$1.00**



Baby  
Crimson Rambler



# Red Raspberries

*Disease-Free, Vigorous Plants Bring Bigger Yields of Better Berries and Cost No More*

Michigan is recognized throughout the country as having the most healthy, most vigorous raspberry plants grown. Every Stromer's Raspberry plant is **TWICE STATE INSPECTED**.

## Proper Production - Double Inspection

This means success or failure to the fruit grower because a plant "sick" with disease or poorly grown will never bear a full crop. Our propagating methods, improved and tested through long years of experience, make it certain you will get your full money's worth in Stromer's Raspberry plants.

## St. Regis Everbearing Red Raspberry

One of the most valuable of all the late introductions in the line of Red Raspberries. The habit of growth is a bushy nature; will produce berries the first year in the fall, and a full crop the following spring and again in the fall.

St. Regis resembles the Early King; its fruit is similar to that variety in quality, flavor and appearance. In September, long after Raspberries are out of season, St. Regis will bear a full crop of fruit, which commonly sells for seven to eight dollars for a 24-pint crate. If you have a market at hand where you can dispose of the fruit, you will find St. Regis a very profitable investment when grown on a commercial scale. If you have not the time or the ground to grow St. Regis for market, be sure to plant at least a few bushes in the garden and keep your table supplied with all you can use.

### ST. REGIS PRICES

25 for \$1.25; 50 for \$1.95; 100 for \$3.25; 250 for \$6.95; 500 for \$9.95; 1000 for \$18.95.

Bearing age St. Regis, 6 for 75c; 12 for \$1.25; 25 for \$2.25; 100 for \$6.95. Husky plants.

### LUCRETIA DEWBERRY PRICES

25 for \$1.25; 50 for \$2.25; 100 for \$3.95; 250 for \$5.95; 500 for \$10.00; 1000 for \$19.95.

## Lucretia, the Big Hardy Dewberry

The only real good Dewberry on the market which is good for all purposes, being very productive, of extra large size, earlier than any of the rest, will grow and thrive on very light soil and live for many years. If you live in a locality where your thermometer registers seven degrees below zero, you can easily prevent the vines from winter-killing by laying down on the ground and covering them with straw, which can be held in place with just a few shovelfuls of earth. Then in the spring they can be taken up and tied to wires which are fastened just like a grape trellis, but not as high, something like 3 feet high is about right. Dewberries make a good addition to your blackberry list, you will like them as well or better for all uses than the common run of blackberries, and, ripening early, you get the advantage of higher prices; as the berry is much larger, you can pick a crate quicker. They are practically free from all diseases. Our plants are fine and Michigan grown. **Add to your income by planting Dewberries. See prices above.**

## Golden Queen Raspberry

In manner of plant growth and size and shape of berry, Golden Queen is almost identical with Cuthbert. It is absolutely hardy, a fine, upright grower, highly resistant to all insects and diseases. The canes are smooth and almost thornless. In productivity, Golden Queen compares favorably with the best of the red varieties.

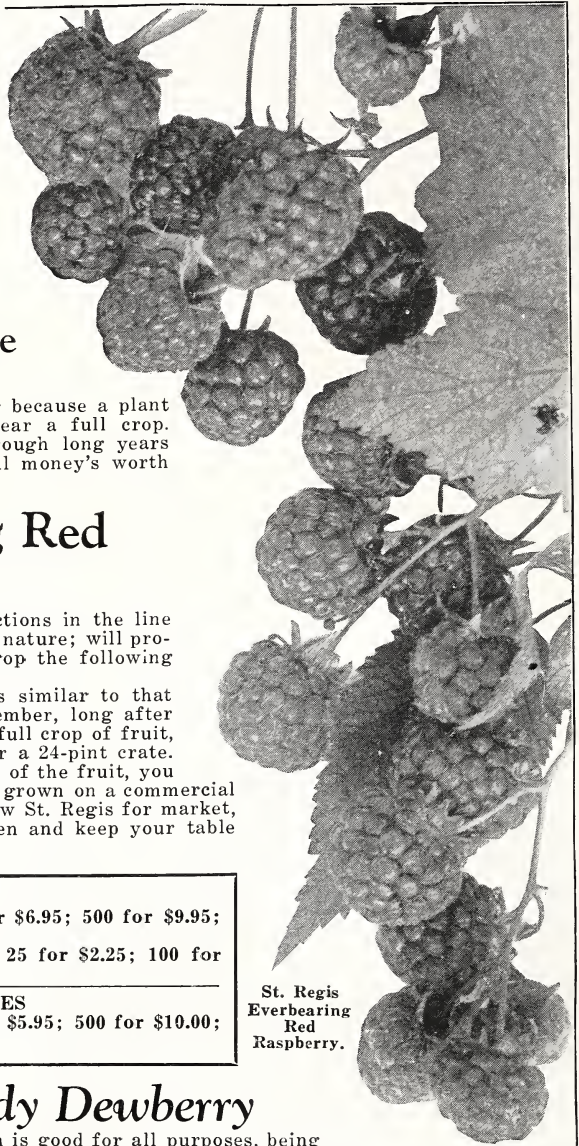
The berries are really beautiful as they are a rich golden yellow, sometimes tinged with pink. Golden Queen will prove to be an unusually desirable variety for table use, pies or canning, as the

berries possess a peculiarly delicate flavor not found in any other Raspberry.

As a table delicacy and for eating fresh from the vines the Raspberry probably has no equal and if you are a lover of this fine fruit you should by all means include Golden Queen in your order this spring. The unusual charm and individuality of these rich golden berries will be a real pleasure highly prized and remembered long after the Raspberry season is over.

See back cover for Golden Queen in natural colors.

Prices on Golden Queen: 6 plants, \$1.00; 12 for \$1.75; 25 for \$2.50; 50 for \$4.00; 100 for \$7.50.



St. Regis  
Everbearing  
Red  
Raspberry.



**Big Profits****Heavy Yields**

# Latham, The Big New Red Raspberry

70 Berries Fill a Pint Box

Although this is a comparatively new variety it is entirely past the experimental stage, and we unhesitatingly recommend Latham as one of the very best Red Raspberries ever grown. This variety originated at the Minnesota State Fruit Breeding Farm and is being grown extensively in Minnesota, the Dakotas, also in Canada, and has never been known to winter-kill, even though exposed to 45 degrees below zero. Latham is a tall, vigorous grower, canes extra heavy, foliage dark green, entirely free from disease. Ripens with Cuthbert and is enormously productive. Berries much larger than any other Red Raspberry, many of them one inch in diameter. Color good, quality of the best, full Raspberry flavor. Excellent for shipping or home use.

#### LATHAM PRICES

12 for 65c; 25 for \$1.10; 100 for \$3.00; 250 for \$7.00; 500 for \$11.50; 1000 for \$22.00.

Bearing age plants: 6 for 75c; 12 for \$1.25; 25 for \$2.50; 100 for \$6.95—husky plants.

#### CUMBERLAND PRICES

25 for \$1.00; 50 for \$1.50; 100 for \$2.95; 250 for \$4.95; 500 for \$9.95; 1000 for \$18.95.

Bearing age plants: 6 for 75c; 12 for \$1.25; 25 for \$2.25; 50 for \$3.75; 100 for \$6.95—husky plants.

## Cumberland Black Raspberries

### The Business Blackcap

This is without question the most profitable and popular Black Raspberry ever grown. It is the one safe and reliable commercial variety because you can depend on a big crop regularly. We call it the "business Blackcap" because it succeeds on all soils and produces its big crop year after year.

We have never known Cumberland to fail, and the best proof that it is a profitable variety is the fact that the demand for plants is greater every year and more Cumberlands are planted than all other varieties combined.

Cumberland is perfectly hardy and tremendously productive. The berries are extra large, glossy black, and not equaled by any other variety in quality, flavor or appearance. Whether wanted for market or home use, we can recommend Cumberland to our most exacting customers. Disease free. Twice inspected plants. Cumberland plant crop nearly a failure.



Cumberland.

# Salem (Red)

Dark red. Bunch large, compact, shouldered; berries large, round; skin thick and firm; flesh very sweet, tender, with a rich aromatic flavor. Vine vigorous, hardy, healthy. Ripens earlier than Concord. A splendid keeper, good shipper, and of best quality for both table and wine. Greatly resembles the California Grape with bunches often weighing a pound or more. Your garden deserves at least a few of these plants. Fine two-year-old plants that will often bear same year set. Bearing age.

Grape prices, page 15.



Salem (Red).

Delaware (Red).



## \$1 Backyard Collection

Red, White, and Blue Collection

- 2 Delaware (Red)
- 2 Moore's Early (Blue)
- 2 Niagara (White)
- 2 Salem (Red)

Worth \$1.60

All 2-year, bearing age Vines, **\$1.00**  
for only.....

## Delaware (Red)

A rich and delicately flavored little red grape that is generally recognized as the standard of quality to judge other grapes by. An exceptionally desirable variety for home gardens on account of its compact habit of growth. Commands a premium in all the markets, often selling for twice the price of Concord. Very hardy. Ripens here about the middle of September. Two-year bearing age plants. Prices page 15.





## Stromer's Grape Vines

*Priced Less Than Wholesale*

The Increasing Demand for Grape Juice Makes This a Big Money Crop for Farmers and a Source of Pleasure and Real Economy to Home Owners.

Grapes will thrive everywhere and are the easiest of all fruits to grow. No matter what the condition of the soil may be, light or heavy, rich or poor, our hardy plants will grow and bear tremendous crops for many years. Plant a vineyard and make big money—or a few for home use and make your own grape juice, jams, and jellies. Growers everywhere are making tremendous profits from Grapes, and you can do the same.

Every STROMER Grape plant is guaranteed 100 per cent healthy, true-to-name and productive. They are well rooted, full of pep and will grow and produce big crops and big profits year after year, with only ordinary care. The cuttings for our Grape plants are taken from bearing vineyards, which are thoroughly sprayed and given thorough cultivation throughout the growing season. This gives us a big supply of strong, healthy, wood, and as the cuttings are taken from bearing plants only, we know absolutely that every plant we send you will be true to name, healthy, and strictly first class in every respect.

### Concord

Concord is without doubt the most productive, the most popular and profitable variety yet introduced. It is the standard of excellence, quality and comparison on all markets, and buyers everywhere pay a premium for this superior-quality Grape. Concord is perfectly hardy, having withstood a temperature of 30 degrees below zero without injury, it will produce more fruit per acre than any other variety and does well on light or heavy soil. The bunches are large and compact; berries large, bluish black color; sweet and juicy; fine quality and flavor. In fact, this variety is the one all-purpose Grape. A strong, vigorous grower, making plenty of vine to produce the enormous crop of fruit produced regularly year after year.

### Agawam

An excellent keeper that may be kept in common storage until January. Large in both bunches and berries, dull purplish red, rich, sweet and of a decidedly foxy flavor. Vigorous and moderately productive. Ripens here last of September.

### Niagara

This is the Great White Grape that succeeds everywhere and under all conditions. In fact it is really the White Concord, as it seems to have all the good characteristics of that great variety, being equally as vigorous, hardy, and productive. Due to the tough, leathery foliage Niagara is practically immune to fungous diseases. It is one of the most delicious and beautiful of hardy Grapes and sells at fancy prices. Berries are large; bunch large and compact; color greenish yellow when fully ripe; juicy, sweet, and delicious. Whether planting for home use or market include Niagara in your order.

### Moore's Early

The Best Early Variety for Market

A Blue Grape similar to Concord in appearance and quality, but ripens two weeks earlier and is the leading standard black Grape of its season. Bunch and berry large, quality and flavor of the best. Vine healthy and hardy.





# Stromer's Fruit Trees Grow and Bear

Whether you want only a few trees for a home fruit yard or several hundred for a commercial orchard, we can supply you with well grown, strong, sturdy trees. Our prices are less than half the usual prices asked by agents, because we sell direct from Nursery to you. And, what's more, we stand back of the trees after you get them. All trees are 9/16'' to 11/16'', 2-yr.-old, and cannot be sent by Parcel Post. Must be sent by Express.

## Apples

**DELICIOUS.** Our stock is guaranteed to be the genuine True Delicious. Fruit is large, somewhat conical in shape, beautiful crimson color, mottled with dark red. Flesh fine grained, crisp, tender and juicy. Quality superb, and excellent shipper and keeper. Tree very hardy, vigorous grower, heavy bearer every year. See illustration on page 23.

**JONATHAN.** A beautiful, bright red Apple. Of excellent keeping quality. Fruit is highly flavored and brings a high price on the market. Flesh is tender, juicy and rich. Tree bears early and produces heavy crops for a long period of years.

## Peaches

**J. H. HALE.** (Midseason Yellow Freestone). Ripens a few days earlier than Elberta. Fruit extra large, golden yellow with deep carmine blush. Excellent quality and flavor. Tree is large, hardy, and bears young. Does best when grown with Elberta.

**ELBERTA.** (Midseason Yellow Freestone). The leading commercial variety. Fruit is large, firm, juicy, making it ideal for canning, storage and shipping. Beautiful golden yellow color with bright red cheeks. Very hardy, vigorous, a heavy cropper.

## Plums

**GREEN GAGE.** Round, greenish yellow in color. Juicy and very sweet and rich. Trees vigorous and productive. Ripens in late September.

**GERMAN PRUNE.** The most delicious of all Plums. Extra large size, often two inches in diameter. Early and abundant bearer. Combines hardness, immense size, delicious quality, long keeping, beautiful color, small pit; an early and prolific bearer, often producing a good crop in two years after planting.

## Pears

**THE NEW DOUGLAS.** Claimed to be blight proof and cold resistant. Bears early, often same season planted and produces a heavy crop. A regular cropper in all soils and localities. Fruit large, smooth; beautiful golden yellow color, flecked with red and russet. Flavor delicious, very sweet, melting and juicy. Something new and better.

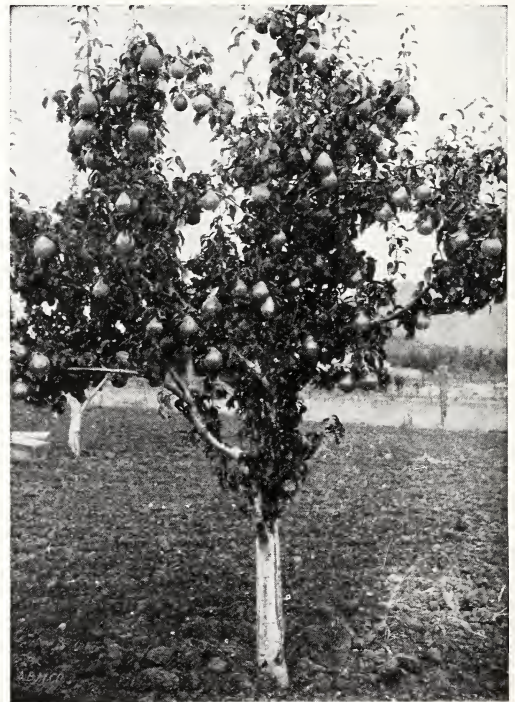
**BARTLETT.** The most popular Pear for home use and market, a leader among canning Pears. Should be in every garden and orchard. Large, golden yellow with reddish blush on the sunny side. Flesh tender, melting and juicy, with a delicious, musky flavor. Tree vigorous, erect, bears abundantly.

## Sour Cherries

**LARGE MONTMORENCY.** Best late Sour Cherry, ripening about ten days later than Richmond. The fruit is extra large, bright red, firm and fine for shipping. A strong grower, perfectly hardy, bears young and a full crop. Illustrated on page 23.

## Sweet Cherries

**BING.** The popular, new sweet Cherry with dark brown, nearly black color. Extra large fruit. Flesh solid, fine flavor. One of the best Cherries for shipping. A hardy prolific bearer. Ripens in July.



A 4-year-old Douglas Pear Tree.

	Each	10	25	100		Each	10	25	100
2-yr.-old, 5 to 6 ft.					2-yr.-old, 5 to 6 ft.				
Delicious Apple (Red) .....	\$0.48	\$3.50	\$9.00	\$29.95	The New Douglas Pear .....	\$0.85	\$7.50	\$17.50	\$69.00
Jonathan Apple .....	.48	3.50	9.00	29.95	Bartlett Pear .....	.60	4.95	11.95	40.00
J. H. Hale Peach .....	.45	3.95	7.00	26.00	Large Montmorency. Sour				
Elberta Peach .....	.45	3.95	7.00	26.00	Cherry .....	.60	4.95	11.95	40.00
Green Gage Plum .....	.55	4.95	11.95	40.00	Bing. Sweet Cherry .....	.65	5.50	12.50	45.00
German Prune .....	.55	4.95	11.95	40.00					





Douglas Pear.



Delicious Apple.

## Delicious

Winter apple. A remarkable introduction of recent years, which has established its claim to first rank, both for commercial and home orchards. Fruit large; acid. Flesh fine grained, crisp, juicy, melting, and really delicious. Tree hardy, vigorous grower, producing enormous annual yields.

## The Douglas Pear

Something New and Better.  
 Excellent Flavor—Fine Quality  
 Practically Blight-Proof

Fruit is large, smooth, brilliant yellow with red markings. Ripens in September. Large 4- to 6-ft., 2-yr.-old trees, only 85c each. Complete price opposite page.



Lucretia Dewberry. See page 18.



Large Montmorency Cherry.





**Champion Everbearing Strawberry.**  
For description see page 14; prices page 15.

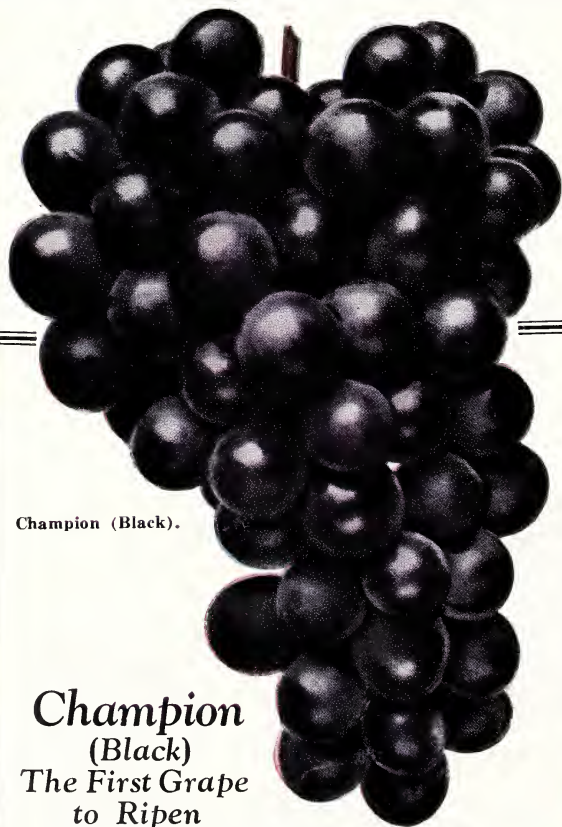
## “HARD TIME” Everbearing Strawberry Garden

This Garden Should Produce Sixteen Quarts Per Week.

100 MASTODON	} For only	\$3.00
100 CHAMPION		
100 BITTER ROOT		
50 LUCKY STRIKE		

NO DISCOUNT

ALL FIRST CLASS PLANTS



Champion (Black).

### Champion (Black) The First Grape to Ripen

Ripening as it does a week to 10 days earlier than Moore's Early and other early varieties, this fine grape certainly deserves the great popularity it has attained. Champion is a vigorous grower, perfectly hardy and enormously productive. The bunches and berries are large; color nearly black, quality good. Prices on page 15.



**Golden Queen.**  
For description see page 18.