

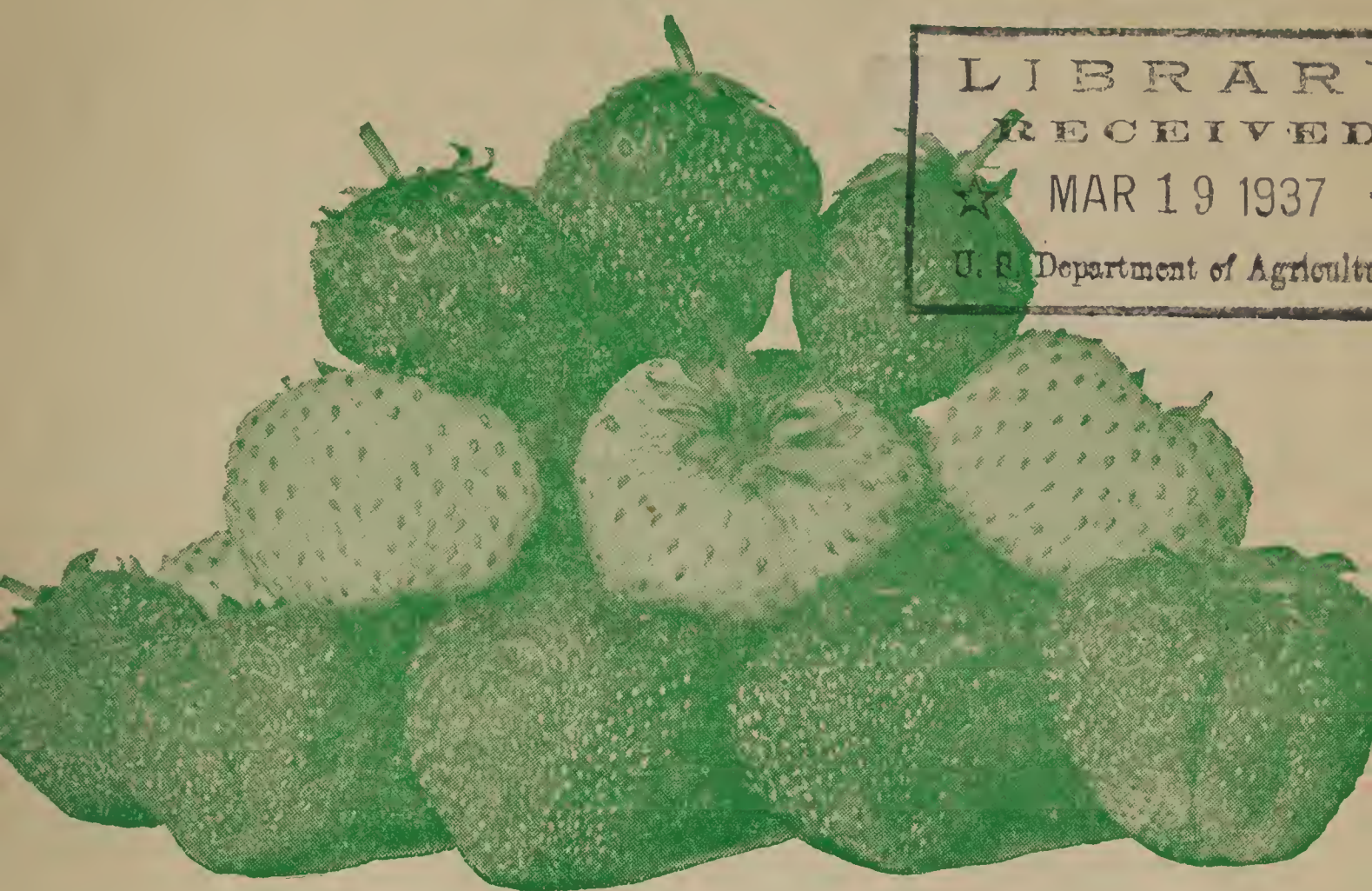
## **Historic, archived document**

Do not assume content reflects current scientific knowledge, policies, or practices.



# L. J. FARMER'S

## 1937 Catalog and Price List



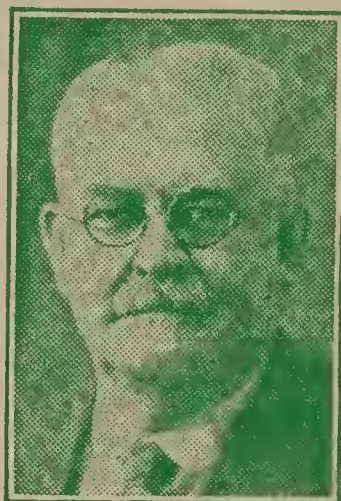
LIBRARY  
RECEIVED  
★ MAR 19 1937  
U. S. Department of Agriculture

### BLACK AND WHITE STRAWBERRIES

Photographed July 17, 1934

#### To Our Friends:

Intelligent people, more and more, are getting sick of purchasing Nursery Stock—Trees, Shrubs, Plants, Vines, etc., from places where Nursery Stock ought never to have been sold; and getting back to purchasing from the Nursery where it is grown, dug up fresh and handled expeditiously, thus insuring the best results. No nursery is equipped so they can take individual orders, go dig them up, and pack them securely, as cheaply as the same order can be handled over the counter of a department store; but Oh! the difference. In the one case, the stock grows and does well. In the other, it is a gamble. If stock has just come into the store, the chances are even. If it has stood around for weeks, even days, wrapped up in moss and paper, the chances for its growing are remote.



*At It Fifty-four Years*

In the past few years, especially during the depression, our trade has come almost entirely from old customers and their children and grandchildren. Hardly a day passes but someone comes to our office and, in the course of the conversation, refers to their parents or grandparents having purchased Nursery Products etc. of us, 40 or more years ago. The new buyers and those who have been looking for "Bargains," regardless of quality, have almost all of them been buying where things were "Cheap." But, they are getting sick, and more and more, they are coming back to us for their supplies.

It is a pity that in the Nursery Business, as in many other lines of business, that "Fools Dare To Go, Where Angels Fear To Tread." There are too many in this business just for the dollar. They don't know varieties, grades, or hardly anything else, except the money making part of the business. They get your dollar and that is all they care.

I want to say that, while it is necessary to have money in order to live and carry on one's business money has not been the driving force with me. I have always tried to give a dollar's worth of goods for a dollar in money; and the fact that I was conducting a business where there was a chance to do so much good and make so many people happy, has always been the driving force with me, as it is with all "True Nurserymen."

Fragaria Nurseries, Pulaski, N. Y.

## WE APOLOGIZE

This little Price List is rather modest, but we cannot figure out how we can pay for an expensive catalogue and send it to our long list of customers, without adding greatly to our prices. With this small expense, we are able to keep prices near somewhat the same as last year, in spite of the increased costs and shortage of many kinds.

## COME AND SEE US

Whenever it is possible, we prefer that patrons come here and see the goods before they pay for them. You can come any day, but we do not pack orders on Sunday. You can get your order any day, if you have ordered long enough ahead to give us time to pack it before the day you want it, even Sunday. Our L. J. Farmer is almost always at home and ready to talk with customers.

## I GOT IT OF FARMER

As one goes through the gardens and plantings of people who love flowers, plants, vines, shrubs, trees, etc.; we often hear some one say, "Where did you get that beautiful thing?" The answer, very frequently, in some places, almost invariably is, "I got it of L. J. Farmer." This is one of the most satisfying things about the nursery business, the fact that we handle things that make for beauty and so much pleasure everywhere. Very few nurserymen ever got very rich in earthly goods, the opportunities they have to show their generosity and public spirit are so many, that it takes away whatever small profits their business may show at the end of each year, but then, we cannot take material things with us when we go and what is the use?

## STRAWBERRY PLANTS

"E" stands for early; "M" for medium; "L" for late; and "F. B." for fall bearing. Send 50c for "Farmer on the Strawberry" over 100 pages, tells all about Strawberry Culture.

Senator Dunlap, m, Good for home use and canning. Requires little care, berries medium size, sweet, delicious. 10 plants, 15c; 25, 30c; 100, 80c; 1000, \$6.00.

Premier, e, Large, bright color, very productive. The leading early market variety. 10, 20c; 25, 35c; 100, \$1.00; 1000, \$7.00.

Dorsett, m, Larger than Premier, which it resembles. Very productive and fine for market. May supercede Premier. 10, 25c; 25, 50c; 100, \$1.50; 1000, \$10.00.

Fairfax, e, Berries very large to medium. Finest quality for home use and canning as well as appreciative market. 10, 30c; 25, 60c; 100, \$1.75; 1000, \$12.00.

Stevens' Late Champion, l, Very large, bright colored, productive. Fine for late market. 10, 20c; 25, 35c; 100, 80c; 1000, \$7.00.

Wm. Belt, l, Large, irregular berries, like S. L. Champion, but of very highest flavor. Fine for home use and fancy market. 10, 20c; 25, 35c; 100, \$1.00; 1000, \$8.00.

Chesapeake, l, The quality strawberry for late market, brings highest prices in N. Y. City hotel trade. 10, 25c; 25, 60c; 100, \$1.50; 1000, \$12.00.

Pearl, l, The very latest strawberry, fine for home use and near-by market. 10, 25c; 25, 60c; 100, \$1.50; 1000, \$12.00.

New York, m, Large, pretty, very mild flavored. 10, 20c; 25, 35c; 100, \$1.00; 1000, \$8.00.

Gibson, m, Medium size, very productive, a general purpose berry, very similar in many ways to Dunlap. 10, 20c; 25, 30c; 100, 80c; 1000, \$6.00.

Aroma, l, Leading market berry of the South West. Large, good color, fine shape. Shows off fine in market. 10, 20c; 25, 35c; 100, \$1.00; 1000, \$8.00.

Early Jersey Giant, e, Very large, 20 fill a quart. Berries deep red, attractive, fine for canning. My favorite extra early strawberry. 10, 25c; 25, 60c; 100, \$1.50; 1000, \$12.00.

Catskill, m, Claimed to be the most productive and profitable midseason variety. 10, 25c; 25, 60c; 100, \$1.50; 1000, \$12.00.

Brandywine, l, Berries very large, rich deep red, through and through. Fine quality. 10, 20c; 25, 50c; 100, \$1.50; 1000, \$12.00.

Ridgway, l, Very late, fine flavor and so pretty in the basket. The one berry for home use and market on low, wet, heavy soils. 10, 20c; 25, 50c; 100, \$1.50; 1000, \$12.00.

Glen Mary, l, Very large, irregular, productive. The berry for late market where fine flavor is not appreciated, just lots of berries, that's enough for some people. 10, 20c; 25, 40c; 100, \$1.00; 1000, \$8.00.

New Gem, f. b., e, The best fall bearing variety with us. Ripens its fruit earlier than Mastodon and is through fruiting when heavy frosts come, while Mastodon in some seasons, still has half its crop unripened. The berries are large, fine color and round in shape. For the past two seasons, it lost its foliage in midsummer, but we will spray for this. 10, 25c; 25, 60c; 100, \$1.50; 1000, \$10.00.

Mastodon, f. b., l, The leading everbearing variety, very large and productive in the regular season as well as the fall. Price same as Gem.

Champion Everbearing, f. b., Looks very much like Dunlap in size and color. Sweet and delicious. Price same as Gem.

Green Mountain, f. b., Bears a large crop of fine berries in fall of second year, but not very fruitful the first year, but of fine flavor. Plants vigorous and healthy. 10, 75c; 25, \$1.50; 100, \$5.00.

Black and White Strawberries. These have a very pleasing effect, when shown together. The white strawberry is the sweetest berry we ever tasted. The black is very large, firm, dark colored and the best canning berry we ever fruited. In combination, we put in 1-3 White and 2-3 Black plants. 10, 75c; 25, \$1.50; 100, \$5.00. The Black Strawberry alone, 10, 50c; 25, \$1.00; 100, \$2.50.

Grand Champion, l, Enormous cropper, medium to very late, 40 days in fruiting. Fruit large and attractive. 10, 35c; 25, 60c; 100, \$1.50; 1000, \$12.00.

The Best, l, Fine for home use and very late market. 10, 25c; 25, 60c; 100, \$1.50; 1000, \$12.00.

## BEGINNERS STRAWBERRY COLLECTION

25 Dunlap, 25 Aroma, 25 Premier, 25 Gibson, 25 Gem, 25 Mastodon, 150 in all, value \$2.50, special price, only \$1.95.

## QUALITY STRAWBERRY COLLECTION

25 Ey. Jersey Giant, 25 Fairfax, 25 The Best, 25 Pearl, 25 Champion Everbearing, 25 New Gem, 150 plants, value \$3.60; special price, \$2.95.

## Transplanted Strawberry Plants

Best for setting in late May, June, July and August. 50c per 100, in addition to above prices for common field plants.

Pot Grown Strawberry Plants (ball of earth on each plant) ready in August and September, 25, \$1.25; 100, \$4.50; 1000, \$35.00.

Everbearing Strawberry Seeds, all varieties mixed, 100 seeds, 10c; 500 seeds, 25c.

## VALUABLE PLANTS, ETC. FREE

Every order amounting to \$2.00 or more, will be entitled to free plants, bulbs, etc., selected by our L. J. Farmer.

**RASPBERRIES****Red Raspberries**

Chief, The leading early market variety. Fruit medium size, fair quality, firm and good shipper. Plants very vigorous and productive. Medium size 1 yr. plants, 10, 25c; 25, 50c; 100, \$1.50; 1000, \$12.00. No. 1, first class 1 yr. plants, 10, 40c; 25, 80c; 100, \$2.50; 1000, \$20.00. 2 yr. Fruiting Size Transplants, 10, 75c; 25, \$1.50; 100, \$4.50; 1000, \$38.00.

Herbert Hardy, from Canada, Productive, fine for market. Price, same as Chief.

Cuthbert, The old standby, the finest flavor of all. Large, dark, late. Price same as Chief.

St. Regis, Very early in regular season, but if canes are cut off in spring it produces a large crop on ends of new canes, in the fall. Productive, medium size, bright color, attractive. Price same as Chief.

Latham, Very large, attractive and sells well in market, but of poor flavor. We advise it only for great quantity. Price same as Chief.

June, Best early variety for home use and very near market. 10, 50c; 25, \$1.00; 100, \$3.50. 2 yr. Transplants, 10, 75c; 25, \$1.50; 100, \$5.00.

Viking, To our mind about the best of the red varieties. Canes thrifty and very productive. Berries large, bright colored, attractive, medium early and are of very fine flavor. Price same as June.

Newburgh, Canes of medium growth, requiring good care and plenty of fertilizer. Berries very large and when shipped from Oswego County to N. Y. City, they bring the highest prices. On account of the severe drouth, did not make the grade with us the past two seasons. Price same as June.

La France, The best of the everbearing raspberries, large, dark colored and productive. Plant beside St. Regis, for best results. 10, 75c; 25, \$1.50; 100, \$5.00. 2 yr. Transplants, 10, \$1.25; 25, \$2.00; 100, \$7.50.

Golden Queen, The sweetest and finest flavored of all raspberries, surpassing the old Cuthbert, if possible. It is fine for home use, but will not sell in the general market, on account of unattractive color. Most people buy with the eye. Price, same as La France.

**Black Raspberries**

Plum Farmer, More generally grown in the North and East of any black cap we know. Early, large, very productive and ripens mostly in one week. Medium size, 1 yr. tip plants. 10, 25c; 25, 60c; 100, \$1.50; 1000, \$12.00. No. 1, tip plants (best grade). 10, 40c; 25, 80c; 100, \$2.50; 1000, \$18.00. 2 yr. Transplants, bearing age, 10, 75c; 25, \$1.50; 100, \$5.00; 1000, \$35.00.

New Logan, A fine jet black early black cap, very large, productive and of the finest flavor. Price, same as Plum Farmer.

Blue Ribbon, A new black cap of the same nature as the Plum Farmer, but the plants are larger, more vigorous and productive and hardier. The berries, while greyish black, like Plum Farmer, are very much larger. All in all, it can be truthfully called, "A magnified Plum Farmer." Price, No. 1 tips, 1 yr. old, 10, 75c; 25, \$1.50; 100, \$4.50; 1000, \$38.00. 2 yr. Transplants, 10, \$1.25; 25, \$2.50; 100, \$7.50; 1000, \$60.00.

**TRANSPLANTED PLANTS**

Our Transplanted Raspberry and Blackberry plants should bear enough fruit the first year to pay for the plants.

**BEGINNERS RASPBERRY COLLECTION**

10 Chief, 10 Latham, 10 Columbian, 10 Plum Farmer, 10 St. Regis Everbearing, 50 plants in all. Value \$2.35; Special price, \$1.85. 25 each of these 5 varieties, 125 plants in all, value \$4.45; special price, \$3.65. 2 yr. Transplants, (Fruiting Size Plants), just double above prices.

**Blue or Purple Raspberries**

Columbian, The most productive of all raspberries. Plants very vigorous and do well over a wide area. Berries very large, firm, of fair flavor and finest of all for canning. It may be truthfully called, "The Farmer's favorite raspberry." Anyone can grow them. Price 10, 75c; 25, \$1.25; 100, \$3.50; 1000, \$25.00 for tips. 2 yr. Transplants, 10, \$1.00; 25, \$1.75; 100, \$6.00.

Royal Purple, A purple raspberry adapted for heavy soils, while Columbian likes lighter soils. The Royal Purple is a true "Royalist," popular, like King Edward because of size, productiveness, flavor and easy to pick. No. 1 tips, 10, \$1.00; 25, \$1.75; 100, \$5.00; 1000, \$35.00; 2 yr. Transplants, 10, \$1.50; 25, \$2.25; 100, \$7.50.

The New Raspberries, Originated at N. Y. AGL. Exp. Sta., Geneva, N. Y.

Taylor, red, 10, \$1.25; 25, \$2.50; 100, \$8.00.

Indian Summer, red, everbearing, 10, \$1.50; 25, \$3.00; 100, \$10.00.

Sodus, purple, 10, \$1.00; 25, \$2.00; 100, \$6.00.

**QUALITY RASPBERRY COLLECTION**

10 Blue Ribbon, 10 Viking, 10 June, 10 La France, 10 Royal Purple, value, \$3.50; Special price, \$2.75. 25 each of these varieties, 125 plants in all, value \$6.75; Special Price, \$5.25. Fruiting Size, 2 yr. Transplants, just double the above prices.

Mrs. L. J. Farmer, with a pint can of Newburgh red raspberries and a pint can of black strawberries, won first prize at State Fair for two best cans of fruit of any kind, (Sept. 1935).

**BLACKBERRIES**

Snyder, early, hardy, dependable, fine for pies and canning, very productive. 1 yr. sucker plants No. 1, 10, 50c; 25, \$1.00; 100, \$2.75; 1000, \$22.00. 2 yr. Transplants, 10, 75c; 25, \$1.50; 100, \$4.50; 1000, \$35.00.

Eldorado, The sweetest blackberry, canes reclining, quite hardy and very productive. Berries jet black, long, and melt in your mouth, like wild blackberries. Price same as Snyder.

Giant Himalaya, Enormous cane, very productive of small berries, cane filled with ugly pricklers. Desirable to keep away thieves and marauders. Price same as Snyder.

Ora Neil Blackberry, new, The largest and best of all the blackberries for market. Canes vigorous, quite hardy and very productive. Fruit sells like hot cakes in market. Plants scarce, 50c each, 10, \$4.50; 25, \$7.50; 100, \$25.00. 2 yr. old plants, 75c each, 10, \$6.00.

Lucretia Dewberry, Berries very large, long and attractive. Sells well in market. Ripens in late strawberry and red raspberry time, berries 2 inches or more in length and four times the size of ordinary blackberries. Price, tips, same price as Snyder Blackberry. Ours are the genuine, best strain.

**CURRANTS**

Fays Prolific, Best red for light and medium soils. Productive, large, attractive. 2 yr. No. 1, 30c; 3 for 85c; 10, \$2.25; 100, \$18.00. 3 yr. size, bearing age, 40c each, 3 for \$1.00; 10, \$3.00; 100, \$25.00. 5 yr. full fruiting age, 50c each, 10, \$4.50; 100, \$40.00. 1 yr. size 15c; 3 for 35c; 10, \$1.00; 100, \$8.00.

Victoria, White Grape, White Imperial, Wilder, same price as Fays Prolific.

Red Cross, largest, finest red currant very productive and fine for market. 2 yr. 40c each; 3 for \$1.00; 10, \$3.00; 100, \$25.00. 3 yr. size, 50c each, 3, \$1.25; 10, \$3.50; 100, \$30.00. 5 yr. size, 75c each, 3 for \$1.75; 10, \$5.00; 100, \$45.00. 1 yr. size, 20c; 3 for 50c; 10, \$1.35; 100, \$12.00.

Perfection, Minnesota, Diploma, same price as Red Cross.

**GOOSEBERRIES**

Houghton, Red, medium sized, very productive, fine quality. 2 yr., 30c each; 3 75c; 10, \$2.00; 100, \$18.00. 3 yr. size, bearing age, 40c; 3 for \$1.00; 10, \$2.75; 100, \$25. 5 yr. full bearing age, 50c each; 10, \$4.50; 100, \$40.00.

Poorman, Red, enormously productive, larger than Houghton. Sweet and delicious. 2 yr. 35c; 3 for 90c; 10, \$2.75; 100, \$22.00. 3 yr. bearing age, 45c each; 3 for \$1.15; 10, \$3.25; 100, \$30.00. 5 yr. full bearing age, 75c each; 3, \$2.00; 10, \$6.00.

Carrie and Downing, (white) and Josselyn (red), same price as Poorman.

**GRAPE VINES**

Concord, black, medium early, sweet, very productive and universally grown. 4 yr. bearing age size, 30c each; 3, 75c; 10, \$2.25. 2 yr., 15c each; 3 for 40c; 10, \$1.25; 100, \$10.00. Clinton and Catawba, late, same price as Concord.

Worden, black, early, sweet, fine for home use, hardy. 4 yr. bearing age, 50c each; 3 for \$1.35; 10, \$4.00.

Niagara (white), Brighton (red), Agawam (red), Lucile (red); Campbell's (black), Moore's Early (black), Delaware (red), Hubbard (black). Same price as Worden. Above, 2 yrs., 25c; 10, \$2.25; 100, \$20.00.

**The Newer Grapes**

Fredonia, the coming black grape, ripens one month before Concord. Has all the good points of Concord too. 4 yr. size, 75c each; 10, \$6.00. 2 yr. size, 35c; 10, \$3.00; 100, \$25.00.

Portland, like Niagara, but 3 weeks earlier. Same price as Fredonia.

Caco, red, strong growing vine, very productive, ripens with Concord. Berries very large, sweet and delicious. Price, same as Fredonia.

Green Mountain, white, small like Delaware, very sweet and delicious. Ripens two weeks before Concord. Same price as Fredonia.

**Additional Varieties**

In addition to above, we can supply any of the following in 1 and 2 yr. vines, Bacchus, Barry, Beta, Brilliant, Brocton, Champagne, Champion, Diamond, Early Daisy, Eaton, Elvira, Etta, Gaertner, Geothe, Golden Muscat, Green's Early, Hartford, Herbert, Iona, Isabella, Ives, Jefferson, Jessica, Keuka, King, Lindley, Lutie, Martha, Moyer, Ontario, Pocklington, Regal, Salem, Seneca, Sheriden, Vergennes, Wilder, Winchell, Woodruff, Wyoming. Write for prices.

**FARMER'S DEPENDABLE GRAPE COLLECTION**

1 each Concord, Catawba, Clinton, Worden, Lucile, Niagara, 2 yr. old, value, \$1.20; Special price, 95c. 4 yr. bearing age, value \$2.40; Special price, \$2.10.

**QUALITY GRAPE COLLECTION**

1 each Caco, Concord, Fredonia, Green Mountain, Hubbard, Portland, 2 yr. old, value \$1.80; Special price \$1.65. 4 yr. bearing age, value, \$3.80; Special price \$3.25.

**DWARF FRUIT TREES**

Require less room and bear earlier than standard size trees. The young trees, however, are as large as regular size standard trees.

Dwarf Plumcots, 3-5 ft., Apex, Rutland, \$1.00 each; 10, \$9.00.

Dwarf Nectarines, Hunter, Kentucky, \$1.00 each; 10, \$9.00.

Dwarf Apricots, Moorpark, Russian, St. Ambrose, \$1.00 each; 10, \$9.00.

Dwarf Peaches, Belle of Georgia, Elberta, Late Crawford, Rochester, \$1.00 each; 10, \$9.00.

Dwarf Cherries, Black Tartarian, Napoleon Bij, Windsor, English Morello, Montmorency, \$1.00 each; 10, \$9.00.

Dwarf Plums, Abundance, Bradshaw, Reine Claude, Yellow Egg, \$1.00 each; 10, \$9.00.

Dwarf Pears, Duchesse, Bartlett, Clapp's Favorite, Buerre de Anjou, Seckel, Wilder, Lawrence, \$1.00 each; 10, \$9.00.

Dwarf Apples, Delicious, McIntosh, N. Spy, R. I. Greening, Yellow Transparent, Sweet Bough, Gilliflower, 20 Ounce, Winter Banana and Red Spy, \$1.25 each; 10, \$11.00.

**STANDARD FRUIT TREES**

Apples, McIntosh, N. Spy, Baldwin, Maid. Blush, Gravenstein, Winter Banana, Red Spy, Delicious, Stayman's, Winesap, etc., \$1.00 each; 10, \$9.00; 100, \$85.00.

Pears, Clapp's Favorite, Bartlett, Seckel, Anjou, Duchess, Worden-Seckel, Bosc, Wilder, Sheldon, Kieffer, Lawrence, \$1.00 each; 10, \$9.00; 100, \$85.00.

Plums, Abundance, Bradshaw, Burbank, Monarch, Red June, Wickson, Lombard, etc., \$1.00 each; 10, \$9.00; 100, \$85.00.

Peaches, Belle of Georgia, Carmen, Crawford Early, Elberta, Greensboro, J. H. Hale, Rochester, etc., 75c each; 10, \$7.00; 100, \$60.00.

Quinces, Orange and Champion, \$1.25 each; 10, \$11.00; 100, \$100.00.

Apricots, \$1.00 each.

Scions, 50c per 12.

Grafting Wax, ¼ lb. 20c; ½ lb. 30c; 1 lb. 50c.

**GARDEN ROOTS AND PLANTS**

Asparagus Roots, Mary Washington, 3 yr. size, 25, \$1.00; 100, \$3.00; 1000, \$25.00. 1 yr. size, 25, 50c; 100, \$1.25; 1000, \$8.00. 2 yr., 25, 60c; 100, \$1.75; 1000, \$12.00.

Rhubarb or Pie Plant, Linneaus, Victoria and Strawberry, 2 yr., 10c each; 10, 75c; 100, \$6.00. New Johnson Rhubarb, very large, red, tender, delicious, 25c each; 10, \$2.00; 100, \$15.00. Extra large roots for winter forcing, just double above prices.

Holt's Mammoth Sage, plants grow large leaves and do not seed. A plant grows to size of bushel basket in one year. 25c each; 10, \$2.00.

Horseradish Roots, root cuttings, 4-6 in. long. 10, 25c; 100, \$1.50; 1000, \$10.00.

Cabbage Plants, frost proof, ready in Feb. to May. 100, 50c; 1000, \$2.50; 5000, \$2.00 per 1000. Home grown, ready in June and July, same price.

Onion Plants, same price as cabbage.

Tomato Plants, Bonny Best, Earliana, John Baer, Greater Baltimore, Greenhouse grown, 25c per dozen; \$1.50 per 100; \$12.00 per 1000. Field grown in June and July, 15c per dozen, \$1.00 per 100, \$8.00 per 1000. New "Penn State" Tomato, early as Earliana and has produced 20 tons of fruit to the acre at Penn. State College, 50c per dozen, \$3.00 per 100, \$20.00 per 1000. Greenhouse or field grown.

Sweet or Hot Peppers, same price as greenhouse grown tomatoes.

Egg Plant, per doz., 50c; 100, \$3.50; 1000, \$25.00.

Sweet Potato, same price as field grown tomatoes.

Cauliflower, Brocoli, Brussell's Sprouts, Celeriac, Kohl Rabi, 25c per 12; 100, 75c; 1000, \$6.00.

Celery, Wonderful or Golden Plume, Golden Self Blanching, Giant Pascal, Greenhouse grown, 25, 50c; 100, \$1.50; 1000, \$12.00. Field grown in June and July, 25, 25c; 100, 75c; 1000, \$5.00.

**SEED POTATOES**

Price of seed potatoes subject to change without notice.

Irish Cobbler, Best early, finest quality, pk., 75c; bu., \$2.50; 10 bu., \$20.00.

Red Bugless, Never fails a crop, but requires long season. Same price as Cobbler.

Rural Russett, Yields more than any other variety. Fine quality, if thoroughly ripened. Pk., 60c; bu., \$2.25; 10 bu., \$18.00.

Smooth Rural or Sir Walter Raleigh, Most universally grown of any variety. Price same as Rural Russett.

Purple Glory Potato, A novelty, attracting great attention. Used for table decoration, to color salads, etc. Flesh, as well as skin, deep purple, but tastes like other potatoes. 6 small potatoes 15c, postpaid; 1 pk., \$1.50; bu., \$5.00.

Katahdin, New, Government originated potato. Very smooth, white skin, with deep eye in end, characteristic. It has done well for two seasons with us. The past season (1936), we cut the eyes out of a bushel of Katahdin, planted the eyes and dug 8 bushels of as nice potatoes as we ever saw. 5 lbs., 50c; 1 pk., \$1.00; 1 bu., \$3.00.

### GARDEN HERBS

From 2½ in. pots, 3 plants 60c; 12, \$1.50; 25, \$2.50; 100, \$8.00.

Catnip, Spearmint, Bergamont, Peppermint, Pennyroyal, Lemon Mint (Melissa), Thyme (8 kinds), Lovage, Marjoram, Winter Savory, Costmary, Rosemary, Lavender, Rue, French Lavender, Horehound, Sage, Wormwood, Germander. Seeds of most of above, 10c per pkt.

### ANNUAL FLOWERING PLANTS

Ageratum, Asters, Balsam, Calandulas, Candytuft, Canterbury Bells (annual), Cosmos, Gaillardia, Larkspur (annual), Marigold (French and African), Petunias, Phlox, Dromondi, Portulaca, Salpiglossis, Salvia, Scabiosa, Snap Dragon, Straw Flower (Everlasting), Sweet Allyssum, Ten Weeks Stocks, Verbena, Zinnia (dwarf and giant). Price, greenhouse grown (early) doz., 30c; 25, 50c; 100, \$1.50. Price in late June and July, doz., 20c; 25, 35c; 100, \$1.00. Seeds of above, 10c per packet.

### GARDEN SEEDS

Garden Peas, Mammoth Pod Extra Early, Burpee's Blue Bantam, Telephone (Alderman), Thomas Laxton, 15c per lb. in 5 lb. lots or more.

Sweet Corn, Golden Bantam, Golden Gem (ten days earlier than Bantam), Golden Evergreen. We consider these the three best sweet corns. ½ lb., 20c; 1 lb., 35c; 10 lbs., \$3.00.

Other Garden Seeds, 5 and 10c per packet.

### FARMER ON THE STRAWBERRY

A treatise on strawberry culture, with chapters on the care of other small fruits written by our L. J. Farmer. Over 100 pages, 40 illustrations. Price 50c.

### LARGE SIZE SHRUBS, ROSES

We have a supply of extra large trees, shrubs, roses, etc. especially Spirae, Hydrangeas and Evergreens. Just the thing for people who want extra nice stock for immediate effect. Send your list of wants.

Seed Field Corn, germination over 90%. Lancaster County Sure Crop, \$3.00 per bu.; Leaming, \$2.90; Eigh Row Flint, \$3.10; Yellow Sweepstakes, \$3.30; Sweepstakes, \$3.15; Bristol White Cap, \$3.05; Reid's Yellow Dent, \$2.90; Broad Grain Silo, \$3.00; Pride of the North, \$2.90; Cornell No. 11, \$3.35.

### FIELD GROWN ROSES

Everblooming, Hybrid Tea Varieties, 2 yr. No. 1, only 35c each, \$3.50 per dozen for those starred (\*) and 40c each, \$4.00 per dozen for all the others. Betty, Charm, Dame Edith Helen, Etoile de France, Etoile de Hollande, F. G. Hill, E. P. Thom, Eldorado, Frau Karl Druschki, Golden Dawn, Henry Boles, \*Johanna Hill, Kais. Aug. Victoria, Kardinal Piffle, Lady Ashtown, Los Angeles, \*Luxembourg, Mad. Alex Druex, Madame Butterfly, Mad. Ed. Herriott, Margaret McGreedy, Mrs. Pierre S. Dupont, Mrs. Alex. Ward, Mrs. Chas. Bell, Mrs. Henry Boles, Ophelia, \*Padre, Pink Radiance, \*Pres. Hoover, Roslyn, Syracuse, Sunburst, Souv. de Claud. Pernet, \*Talisman, \*Willowmere, Wm. Kordes, W. C. Eagan.

The above are the very best grade of roses grown, such as others are asking 50 to 75c each. They are grown at Geneva, N. Y. and one of them is worth a dozen Southern grown roses, so far as our experience goes. A few years ago, we asked 75c to \$1.00 each for this grade in above varieties. Fresh dug and in fine condition.

### CHEAP ROSES, GENEVA GROWN

We can supply the following varieties in a grade to compete with chain and de-

### FARMER'S FAVORITE ROSE COLLECTION

If you are unfamiliar with the kinds and colors of roses, have our L. J. Farmer select them for you. He will select 12 of the best ever-blooming varieties of roses, including red, yellow, white and pink varieties, and we will label each plant carefully and ship them to you for \$4.00.

partment store offerings. They have just as good roots as any of the above No. 1 Roses, but have small tops. They are worth more than we ask for them. A field we had of them last summer, was in continual bloom from June to November. 20c each, \$1.80 per dozen.

Columbia, Dame Edith Helen, Etoile de Hollande, E. G. Hill, Gen. Janssen, Johanna Hill, Los Angeles, Luxembourg, Mrs. Henry Boles, Mrs. G. A. Van Rosseau, Mrs. Pierre S. Dupont, Olympiad, Ophelia, Pink Radiance, Pres. Hoover, Roslyn, Sunburst, Talisman, W. C. Eagan. These will be fresh dug and shipped same day.

### HYBRID PERPETUAL ROSES

2 yr. No. 1, 40c each, \$4.00 per dozen.

Anna de Diesbach, Capt. Hayward, Magna Charta, Fisher Holmes, M. P. Wilder, Mrs. John Laing, Frau Karl Druschki, Gen. Jack, Harrison Yellow, Hugonis, Paul Neyron, Prince Camille de Rohan, Ulrich Brunner, Persian Yellow.

### MOSS, RUGOSA AND HYBRID RUGOSA ROSES

Henry Martin Moss, red, 5 yr. bushes, large, 75c; 12, \$6.00.

Blanche Moreau Moss, white, large, same price.

Crested Moss, pink, large, same price as Henry Martin.

Hugonis, Lucida, F. J. Grootendorst and Pink Grootendorst, 2 yr., 40c each; 12, \$4.00. 5 yr., 75c each; 12, \$6.00.

### CLIMBING ROSES

Blaze, \$1.00 each; Blue Rambler, 40c; Baby Rambler, 35c each; Golden Salmon, 35c; Golden Climber, \$1.00; Princess Van Orange, \$1.00; Gardenia, 40c; Dr. Van Fleet, 40c; Mary Wallace, 40c; Paul's Scarlet Climber, 40c; Silver Moon, 40c; Spanish Beauty, 40c; New Dawn, \$1.50.

### BETTER BE SAFE THAN SORRY

I have purchased roses at Department Stores in cities several times. In spite of my knowledge and experience, I have never been able to make one start and grow they all "fade away" and die.

L. J. Farmer

### THE NEW PATENTED ROSES

Blaze, Everblooming red climber, \$1.00 each; \$10.00 per 12.

Countess Vandal, coppery bronze, suffused with soft gold. H. T. \$1.00 each, \$10.00 per 12.

Doublooms, best yellow climber, \$1.50 each; \$15.00 per 12.

Eclipse, H. T., long stream line bud, rich gold, without shading, \$1.50 each; \$15.00 per 12.

Gloaming, H. T. buds, fawn orange, full bloom, pink overlaid with salmon, \$1.50 each; \$15.00 per 12.

Mrs. Francis King, H. T., tinted cream and ivory, eventually turning white, \$1.50 each; \$15.00 per 12.

New Dawn, everblooming Dr. VanFleet, a pink climber, \$1.50 each; \$15.00 per 12.

Rochester H. T., two tone pink and buff, coppery tinged, \$1.25 each; \$12.50 per 12.

Rockett H. T., bright scarlet, very double, old rose perfume, \$1.25 each; \$12.50 per 12.

### COUNTESS VANDAL

PLANT PAT. NO. 38



Signora H. T., long bud of burnt sienna, opening to a lighter hue toward mandarin, \$2.00 each; \$20.00 per 12.

Texas Centennial H. T., a sport of Pres. Hoover, blood red, toning to cerise red in center, \$1.00 each; \$10.00 per 12.

Token H. T., single toned, glowing orange, free bloomer, \$1.25 each; \$12.50 per 12.

### SHADE AND ORNAMENTAL TREES

- Beech, European 2-3 ft. (B.B.) \$2.00; Purple, 18-24 in. B. B. \$2.50.
- Birch. White Birch, 8-10 ft., \$2.25; Black Birch, 6-8 ft., \$2.25; Cut Leaf Birch, 6-8 ft. \$3.00.
- Catalpa Bungii, 5-6 ft., 1 yr., \$1.20; 2 yr. heads, \$2.00; 3 yr. heads, \$2.50.
- Cherry, Japanese Flowering. Varieties, Amanogawa, Canadensi, Fugenzo, Kwanzan, Ojochin, Shirotae, Siebold, Yoshino, 4-5 ft., \$2.00 each.
- Crab, Bechtels, 2-3 ft., \$1.00; Floribunda, 5-6 ft., \$2.00.
- Elm, American, 6-8 ft., \$1.50; 8-10 ft., \$2.00. Camperdown, 2 yr. heads, \$3.50; 3 yr., \$4.50. Chinese, 5-6 ft., \$2.00. Moline, 8-10, \$2.00.
- Horse Chestnut, 4-5 ft., \$1.50; 5-6 ft. \$2.00.
- Linden (Basswood) American, 8-10 ft., \$2.00; European, \$2.25.
- Maples, Norway, the best street tree for all purposes, 6-8 ft., \$2.00; 8-10 ft., \$2.50; 10-12 ft., \$3.00; 12-14 ft., \$3.50.
- Schwed, 6-8 ft., \$2.50; 10-12 ft., \$4.00.
- Sugar, 6-8 ft., \$2.00; 8-10 ft., \$2.50.
- Silver, 8-10 ft., \$1.50; 10-12 ft., \$2.00.
- Weir's Cut Leaf, 6-8 ft., \$1.50; 8-10 ft., \$2.00. Pyramidal, 8-10 ft., \$2.00.
- Mountain Ash, European, 4-5 ft., \$1.50; 5-6 ft., \$1.75; 6-8 ft., \$2.25.
- Mulberry, Teas' Weeping, 5-6 ft., 2 yr. heads, \$2.50; 3 yr. heads, \$3.00. Russian, 6-7 ft., \$1.00 each.
- Oak, Pin Oak, 8-10 ft., \$3.00. Red Oak, 8-10 ft., \$4.50. Scarlet, 8-10 ft., \$5.00. White, 6-8 ft., \$3.50.
- Plane (Sycamore) Oriental, 6-8 ft., \$1.50; 8-10 ft., \$2.50.
- Poplar, North Carolina, 8-10 ft., 75c; 12, \$7.50. Lombardy, 6-8 ft. 75c; 12, \$7.50. 8-10 ft., \$1.00; 12, \$10.00. Simon, 8-10 ft., \$1.00; 12, \$10.00.
- Thorn, Paul's Double Scarlet, 3-4 ft., \$1.50; 5-6 ft., \$2.50. Paul's Double White, 5-6 ft., \$2.50.
- Tulip Tree, 8-10 ft., \$2.25.
- Willow, Wisconsin Weeping, 5-6 ft., \$1.25; 6-8 ft., \$2.00; Babylonica and Niobe, both weeping, same price as Wisconsin.

### MOST POPULAR EVERGREENS

- Balsam Fir, 18-24 in., \$2.00; White Fir, 15-18 in., \$2.00.
- Junipers, Chinese, 15-18 in., \$1.50; 18-24, \$2.00.
- Pfizers Juniper, 12-15 in., \$1.75; 15-18 in., \$2.00.
- Irish Juniper, 15-18 in., \$1.00; 18-24 in., \$1.25. Savin Juniper, 12-15 in., \$1.50.
- Virginiana (Red Cedar), 18-24, \$1.50; Silver Red Cedar, 15-18, \$2.00.
- Picae (Spruce) White Spruce, 12-15 in., \$1.25; Black Hills Spruce, 12-15 in., \$1.50; 18-24 in., \$2.25. Norway Spruce, 15-18 in., 75c; 18-24 in., \$1.25; 3-4 ft., \$2.25; 5-6 ft., \$6.00. Green Colorado Spruce, 15-18 in., \$1.00; 2-2½ ft., \$2.00. Colorado Blue Spruce, 12-15 in., \$2.00; 15-18 in., \$2.50. Koster's Blue Spruce, 12-15 in., \$2.00; 15-18 in., \$3.00; 18-24 in., \$4.00; 2-2½ ft., \$5.00; 2½-3 ft., \$6.00; 3½ ft., \$8.00; 3½-4 ft., \$9.00; 4-5 ft., \$12.00.
- Pines, Dwarf Mugho, 12-15 in., \$1.75; 15-18 in., \$2.25. Scotch Pine, 1½-2 ft., \$1.25.
- Douglas Fir, 15-18 in., \$1.25; 18-25 in., \$1.50.
- Japan Yew, 12-15 in., \$2.00; 15-18 in., \$2.50.
- Arbor Vitae, American 2-2½ ft., \$1.25; 2½-3 ft., \$2.00; 3-4 ft., \$2.50; 4-5 ft., \$3.50; 5-6 ft., \$4.50.
- Golden Douglas Arborvitae, 1½-2 ft., \$1.50. Globe Arborvitae, 12-15 in., \$1.00; 15-18 in., \$1.50. American Pyramidal Arborvitae, 15-18 in., \$1.00; 1½-2 ft., \$1.50; 2-2½ ft., \$2.00; 2½-3 ft., \$2.50; 3-4 ft., \$3.00; 4-5 ft., \$4.50; 5-6 ft., \$5.00. Chinese Arborvitae, 12-18 in., \$1.25; 2-2½ ft., \$1.50.
- Hemlock, Canada Hemlock, 15-18 in., \$1.50; 18-24 in., \$2.00; 2-2½ ft., \$2.25.

### FLOWERING SHRUBS

- Almond, double red and white, 18-24 in. 50c; 3-4 ft., 75c.
- Althea (Rose of Sharon), double and single, white, pink, purple, red, 2-3 ft., 35c! 3-4 ft., 50c. In tree form, red, white, pink, purple Althea, 4-5 ft., \$1.00 each.
- Barberry, Japanese (Thunbergii) 12-15 in., 20c; 10, \$1.50. 18-24 in., 25c; 10, \$2.00.
- New Red Leaf Barberry, red leaves all summer, (for sunshiny places), 15-18 in., 25c; 18-24 in., 35c; 2-3 ft., 45c. True-hedge Barberry (Columnberry) 9-12 in., 30c; 5 for \$1.15; 12-15 in., 35c; 5 for \$1.40.
- Beauty Bush (Kolkwitzia), 2-3 ft., 60c; 3-4 ft., 75c.
- Butterfly Bush, Magnifica, Farquhari, Isle de France, 35c each; large, 50c.
- Calycanthus, 12-18 in., 40c; 2-3 ft., 60c.
- Deutzia, Gracilis, white or pink, 12-15 in., 35c; 15-18 in., 50c. Pride of Rochester, 2-3 ft., 35c; Magnifica, 45c; Lemoine, 9-12 in., 25c.
- Dogwood (Cornus), Siberica (white, blood red branches) 18-24 in., 35c; 3-4 ft., 60c. Varigated Siberica, leaves green and black, same price. Golden Twig Dogwood, 2-3 ft., 60c.
- Elder, Golden, 12-18 in., 35c; 3-4 ft., 75c. Cut Leaf American, 18-24 in., 35c.
- Eleagnus (Russian Olive), 2-3 ft., 50c.
- Forsythia (Golden Bell) Intermedia, Intermedia Spectabilis, Suspensa and Suspensa Fortunei, 18-24 in., 35c; 2-3 ft., 50c.
- Fringe (Smoke Tree), purple, \$1.25; white, same price.
- Witch Hazel, 12-18 in., 35c; 2-3 ft., 60c.
- Honeysuckle, Tartaria, red, pink and white, 18-24, 35c; \$3.00 per 12. 2-3 ft., 60c; \$6.00 per 12. Chrysantha, 2-3 ft., 50c; Fragrantissima, 2-3 ft., 60c; Korolkowii, 60c; Maacki, 18-24, 50c; Morrowi, 2-3 ft., 50c; 3-4 ft., 75c. Ruprechtiana, 2-3 ft., 50c.
- Hydrangea, Arborescens (Snowball Hydrangea), 12-18 in., 35c; 2-3 ft., 50c. Paniculata Grandiflora, "P. G." 12-18 in., 30c; 18-24 in., 45c; 2-3 ft., 60c; 3-4 ft., 75c.
- Kerria Japonica, flora Plena, 12-18 in., 60c; 18-24 in., 75c.
- Mock Oranga (Philadelphus, Syringa), Virginal, large, double white flowers, almost everblooming, 12-18 in., 25c; 18-24 in., 35c; 2-3 ft., 50c; 3-4 ft., 75c. Grandiflora, Coronaris, Snowbank, same price as Virginal. Avalanche, Lemoine, Mt. Blanc, 18-24, 35c; 2-3 ft., 50c. Aureus, yellow foliage, 18-24 in., 50c; 24-30 in., 60c.
- Purple Leaf Plum, 4-5 ft., \$1.00.
- Privet Amur River, hardiest, 12-18 in., 10, \$1.25; 100, \$8.00. 18-24 in. 10, \$1.75; 100, \$10.00. 2-3 ft. 10, \$2.00; 100, \$14.00. 3-4 ft. 10, \$3.50; 100, \$25.00. Iboleum Privet, 15-18 in. 10, \$1.00; 100, \$7.00. 18-24, 10, \$1.35; 100, \$9.00. 2-3 ft. 10, \$1.60; 100, \$12.00. 3-4 ft. 10, \$2.00; 100, \$17.00. California same price as Iboleum.
- Japan Quince, 18-24 in., 35c; 2-3 ft., 50c; 3-4 ft., 75c.
- White Kerria, 18-24 in., 35c; 2-3 ft., 60c; 3-4 ft., 75c.
- Pussy Willow, 2-3 ft., 35c; 3-4 ft., 60c.
- Spirae, VanHoutte, commonly called "Bridal Wreath," 12-15 in., 15c; 10, \$1.00; 100, \$8.00. 18-24 in., 20c each; 10, \$1.50; 100, \$12.00. 2-3 ft., 25c each; 10, \$2.00; 100, \$16.00. 3-4 ft., 50c each; 10, \$3.50; 100, \$30.00. Large bushy specimens, 4-5 ft., 75c to \$1.00 each. Anthony Waterer, 9-12 in., 25c each; 10, \$1.75. 15-18 in., 35c each; 10, \$3.00. 18-24 in., 50c; 10, \$3.50. Korean, 2-3 ft., 50c; 3-4 ft., 75c. Bumaldi, Froebeli, Thunbergii, same price as Anthony Waterer.
- Sumac, Fragrant, 12-18 in., 35c; 2-3 ft., 75c.
- Snowberry, Common or Racemosus, 18-24 in., 30c; 10, \$2.50. 2-3 ft., 50c; 10, \$3.50. Coral Berry, Indian Currant, Mollis, Chenaulti, same price as common white snowberry.
- Tamarix, Africana, Gallica, Pentandra, 2-3 ft., 50c.
- Snowball (Viburnum), Japanese Snowball, 12-18 in., 30c; 10, \$2.50. 18-24 in., 45c; 10, \$3.50. 2-3 ft., 60c; 10, \$5.00. Common Snowball, same price. Carlesi, fragrant, B. & B., 18-24 in., \$1.25.



Weigelia Eva Rathke, crimson, 12-18 in., 30c; 10, \$2.50. 18-24 in., 40c; 10, \$3.50. 2-3 ft., 50c; 10, \$4.00. Rosae, pink, 12-18 in., 25c; 10, \$2.00. 18-24 in., 35c; 10, \$3.00. 2-3 ft., 50c; 10, \$4.00. 3-4 ft., 60c; 10, \$5.00. Abel Carrieri, Amabalis, Candida, Floribunda, Rosa Nana Variegata, 2-3 ft., 40c each; 10, \$3.50.

### SHRUB EVERGREENS

Garland Flower (*Daphne Cnorum*) 6-9 in., 75c; 9-12 in., \$1.00.  
Evergreen Bittersweet (*Eunymus radicans vegetus*), 2 yr., 50c; 3 yr., 75c.  
Japanese Spurge (*Pachysandra*), 2 yr., 15c; 10, \$1.25; 100, \$10.00.

### Rhododendrons and Azaleas

Rhododendron, maximum, Apple blossom flower (July), 18-24 in., \$3.00 each.  
Rhododendron, catawbiense, Orchid pink to rose garnet (June), 18-24 in., \$3.50.  
Rhododendron, Carolinianum, Blush and rose pink (May), 18-24 in., \$3.50.  
Mountain Laurel, light pink (June), 18-24 in., \$3.00.  
Azalea, Arborescens (Sweet Azalea), white flowers, (July), 18-24 in., \$2.00.  
Azalea, canadensis (Rhodora) rose colored (early May), 18-24, \$2.50.  
Azalea, calendulacea (Flame), lemon-yellow, orange, flame-red, brick-red, (June), 18-24 in., \$2.30.  
Azalea, vayssei (Pinkshell) shell pink, (May), 18-24 in., \$4.00.  
Azalea, rosa (Downey Pinxter Bloom) rose colored, (June), 18-24 in., \$2.25.  
Azalea, nudiflora, (Pinxter bloom) light pink to purplish rose, 18-24 in., \$2.25.  
Azalea, viscosa (Swamp Azalea) light pink, (June-July), 18-24 in., \$2.00.  
Blueberry (high bush) large, fruiting clumps, 18-24 in., \$2.25.

### HARDY CLIMBING VINES

American Ivy (Virginia Creeper), 2 yr. 35c; 10, \$3.00. Engelmanns Ivy, same price.  
Trumpet Creeper, 2 yr., 35c; 10, \$3.00.  
Bittersweet, American, 2 yr., 35c; 10, \$3.00.  
Clematis Paniculata, 2 yr., 35c; 10, \$3.00. 3 yr., 50c; 10, \$4.50. Jackmanni, 2 yr. 75c; 10, \$7.00. Henryi, Mad. Ed. Andre, Ramona, same price as Jackmanni.  
Honeysuckle, Hall's Japan, 2 yr., 30c; 10, \$2.50.  
Scarlet Trumpet, 2 yr., 35c; 10, \$3.00.  
Matrimony Vine, 2 yr., 35c; 10, \$3.00.  
Chinese Fleece Vine, 2 yr., 75c; 10, \$7.00.  
Wisteria, purple, 2 yr. from grafts, 75c; 10, \$7.00. From seeds, 50c; 10, \$4.00.  
White Purple and Multijuga.

### HARDY PERENNIAL PLANTS

Achillea, The Pearl, 15c; 3, 35c; 10, \$1.00; 100, \$8.00.  
Aconitum (Monk's Head), 25c; 3 for 70c.  
Alyssum, 20c; 3, 50c; 100, \$12.00.  
Anchusa, Dropmore, 15c; 3, 40c; 100, \$10.00.  
Anemone (Wind Flowers) white, pink and red, 25c each; 10, \$2.00; 100, \$15.00.  
Aquilegia (Columbine) Mrs. Elliott's long spurred, 25c each; 10, \$2.00; 100, \$15.00.  
Rock Cross (Arabis), 15c each; 10, \$1.20; 100, \$9.00.  
Aster (Michaelmas Daisies) blue, pink, red, white and lavender, 25c; 10, \$2.00; 100, \$15.00.  
Astilbe (Spirae) 25c; 3, 70c; 10, \$2.00; 100, \$15.00.  
Butterfly Bush, 35c; large, 50c.  
Campanula (Canterberry Bells or Bell-flower) pink, blue, white, 20c each; 3, 50c; 10, \$1.50; 100, \$10.00.  
Cornflower (Centaurea) pink and blue, 20c; 3, 50c; 10, \$1.50; 100, \$10.00.  
Chrysanthemums "New Astrid" 25c each; 10, \$2.00; 100, \$18.00. Early blooming kinds, Bronze, Grenadier, Barbara Cummings, Pink Cushion, Marion Hatton, Innocence, Vivid, Yellow Normandy, 20c each; 3, 50c; 10, \$1.50; 100, \$12.00.  
Coreopsis, Golden Giant, 20c; 3, 50c; 10, \$1.50; 100, \$12.00.  
Delphinium (Larkspur) Belladonna, Bellamosa, Gold Medal Hybrids, 1 yr., 15c; 2 yr., 25c; 3 yr., 35c each.  
Sweet William (*Dianthus*, *Barbatus*) in mixture, 15c; 3, 30c; 100, \$6.00.  
Gas Plant (*Dictamnus*) 3 yr., white and red 25c; 3, 70c; 10, \$1.75; 100, \$15.00.  
Bleeding Heart (*Dielytra*) *Spectabilis*, 1 yr. 30c; 3, 75c; 10, \$2.00. 2 yr., 50c; 3, \$1.25; 10, \$3.50; 100, \$25.00.

Foxglove (*Digitalis*) Giant Shirley strain, 15c; 3, 40c; 10, \$1.25.

Funkia, 20c; 3, 45c; 10, \$1.25.  
Gaillardia, 20c; 3, 45c; 10, \$1.25.  
Geum Heldriechi, 25c; 3, 70c; 10, \$1.50.  
Gypsophila (Baby's Breath) *Paniculata*, *repens*, 20c; 3, 45c; 10, \$1.25.  
Christmas Rose (*Helleborus Niger*) 1 yr., 50c; 2 yr., 75c; 3 yr., \$1.00.  
Hemerocallis (Day Lily) 20c; 3, 50c; 10, \$1.50.  
Hibiscus (Mallow, Rose of Sharon) pink, red, white, crimson, 15c; 3, 40c; 10, \$1.10; 100, \$10.00.  
Hollyhocks, single, assorted colors, mixed, 10c each; 3, 25c; 10, 60c; 100, \$5.00. Double in red, white, yellow, pink, 20c; 3, 45c; 10, \$1.25; 100, \$10.00.  
Hardy Candytuft (*Iberis*) *Jucunda*, *Semper-virens*, 25c; 3, 70c; 10, \$2.00.  
Iris, German, assorted colors, mixed, 15c; 3, 35c; 10, \$1.00. Japanese, 10 varieties, 20c; 3, 50c; 10, \$1.50. Beautiful Blue Siberian Iris, 10c; 3, 25c; 10, 60c; 100, \$5.00.  
Perennial Pea (*Lathyrus*) pink, 15c; 3, 40c; 10, \$1.10.  
Gayfeather (*Liatris*) 20c; 3, 50c; 10, \$1.50.  
Statice (*Limonium*) 20c; 3, 50c; 10, \$1.50.  
Lily of The Valley, 20c; 3, 50c; 10, \$1.50; 100, \$12.00.  
Lupine, white, blue, pink, lavender, 20c; 3, 45c; 10, \$1.25; 100, \$11.00.  
Monarda *Didyma*, 20c; 3, 45c; 10, \$1.25; 100, \$10.00.  
Forget-Me-Not, 15c; 3, 40c; 10, \$1.00; 100, \$8.00.  
Pachysandra, 2 yr. 15c; 10, \$1.25; 100, \$10.00.  
Oriental Poppy (*Papaver*) red and salmon rose, 25c; 3, 70c; 10, \$2.00.  
Phlox, *Sublata* (Mountain or Moss Pinks), 20c; 10, \$1.50; 100, \$12.00.  
Phlox *Decussata*, grows 2-3½ ft. Michael Buchner, lavender-cerise; Europa, white with pink eye; F. I. Farrington, soft salmon pink; Sir Edwin Landseer, 15c each; 3, 40c; 10, \$1.00; 100, \$8.00.  
Chinese Lantern (*Physalis*) 20c; 3, 50c; 10, \$1.50; 100, \$10.00.  
Balloon Flower (*Platycodon*) white and blue, 15c; 3, 40c; 10, \$1.25.  
Primrose (*Primula*, *Japonica*), rose, white, carmine, yellow, lilac, 30c; 3, 75c; 10, \$2.00; 100, \$15.00.  
Painted Daisy (*Pyrethrum*) white, pink, blood red, rose and flesh colored, 15c each; 3, 40c; 10, \$1.25; 100, \$11.00.  
Coneflower (*Rudbeckia*) Golden Glow, *Purpurea*, *Speciosa*, 20c; 3, 50c; 10, \$1.50; 100, \$10.00.  
Sedum (Stonecrop) gold, white, yellow, bronze, 15c; 3, 40c; 10, \$1.00; 100, \$8.00.  
Shasta Daisy, 15c each; 3, 40c; 10, \$1.25; 100, \$10.00.  
Cornflower, Aster (*Stokesia*), 20c; 3, 50c; 10, \$1.50; 100, \$11.00.  
Tritoma (Red Hot Poker) multicolor hybrids, reds, yellows, orange, cream, 30c; 3, 75c; 10, \$2.00; 100, \$17.00.  
Globe Flower (*Trollius*) Hybrids, 30c; 3, 75c; 10, \$2.00; 100, \$15.00.  
Veronica (Speedwell), 20c; 3, 50c; 10, \$1.25; 100, \$11.00.  
Tufted Pansies (*Viola Cornuta*) 15c; 3, 40c; 10, \$1.25; 100, \$10.00.  
Viola, *Odorata*, 20c; 3, 50c; 10, \$1.25; 100, \$11.00.  
Vinca Minor (Periwinkle), 15c; 3, 40c; 10, \$1.00; 100, \$7.00; 1000, \$50.00.  
Yucca *Filamentosa* (Adam's Needle), 1 yr. 15c; 3, 40c; 10, \$1.25; 100, \$10.00. 2 yr., 25c; 3, 70c; 10, \$2.00; 100, \$15.00.

### GLADIOLUS BULBS

Named Varieties. These have been selected from a long list, as the best.  
Aflame, begonia-rose, edge bright orange flame. Very large, often 6 inches across. Tall grower.  
Betty Nuthall, glowing coral pink, with light yellow throat. Very vigorous grower, tall and upright.  
Charles Dickens, clear, glowing violet purple with velvety blotch on lower petals. Best in this shade.  
Crimson Glow, large, tall crimson, good straight grower. An old favorite, good.

Giant Nymph, lovely light-rose pink suffused with creamy yellow in the throat. Giant flowers, strong grower.

Gloriana, golden salmon with clear yellow throat. Charming for garden and vases.

Golden Dream, golden yellow flowers of medium sized on very tall stems, many open at one time.

Littlejohn, deep rose pink, ruffled, lighter in throat. 6 or more open at a time. Tall and straight grower.

King George, large red with white throat. Very showy. Tall plant with long spike of bloom.

Marmora, beautiful soft French gray with petunia-purple blotches. Quite unusual and unique. Fine, if used with yellow.

Morocco, glistening deep red, so dark and velvety, it is almost black. Unusual and attractive. A real novelty.

Mrs. Calvin Coolidge, large soft ruffled salmon rose, creamy toward the center. Early.

Olive Goodrich, white, tinted light pink, shading darker at edges. Pale yellow throat, six or more open at a time. Tall grower.

Orange Queen, beautiful light orange, deeper at edge of petals, orange red lines in throat. Very popular.

Orange Wonder, beautiful large salmon-orange, rich color. Vigorous grower, heavy substance, late bloomer.

W. H. Phipps, LaFrance pink overlaid light salmon-rose. Lower petals faintly stained salmon pink. Huge flowers, many open at one time. A sure winner.

Yvonne, blush white or very pale pink, with cerise spot in throat. 6 to 8 very large blooms on a tall growing spike. Wonderful.

Price of all above named varieties, labeled, 7 each; 10, 60c; 100, \$5.00 for large size bulbs. Medium size bulbs, 2c less per bulb.

Mixed Gladiolus Bulbs. A mixture of all our best varieties, including over 50 kinds. A great bargain. Large size bulbs, 10 for 50c; 25, \$1.00; 100, \$3.00. Medium sized bulbs, 10, 40c; 25, 75c; 100, \$2.50; 1000, \$20.00. Bulblets \$2.00 per 1000.

#### Hardy Fern Collections

2 Ostrich, 2 Lady and 1 American Maiden Hair ferns, in carton, \$1.25.

No. 1 Collection for general planting, 8 Ostrich, 10 Lady, 4 Osmunda and 2 Evergreen, \$5.00.

No. 1-A Suitable for general planting, 8 Ostrich, 8 Lady, 4 Sensative and 4 Evergreen, \$5.00.

No. 2 for dry shady places, 6 Leathery Wood, 8 Lady, 6 Hayscented, 4 Interrupted, \$5.00.

No. 3 for moist shady places, 4 Maiden Hair, 8 Evergreen, 4 Ostrich, 4 Cinnamon and 4 Lady, \$5.00.

No. 4 for wet places, 8 Sensative, 6 Clinton's Wood, 6 Royal, 4 Marsh Shield, \$5.00.

One half of any of above collections, \$2.60.

#### DAHLIAS BULBS

##### All Large Decorative

Alice Alexander, opal red, very rich, 50c.

Alice Green, golden autumn shade, 50c.

Alice Marie Galvin, white, toned cameo pink, \$1.00.

Alma Alexander, deep orange, 50c.

Alta Nevada, deep rose and tangerine color, \$1.00.

Avalon, pure yellow, 25c.

Brockton Beauty, a large lavender, 50c.

Catharine Wilcox, white, tipped cerise, 25c.

Charlotte Alexander, old rose or a little lighter, 50c.

Coquette, red and gold combination, 50c.

C. T. Hardwick, blush lavender, white tipped, 50c.

Dad, dwarf grower, large fine red, 50c.

Dr. Tevis, salmon-rose, 25c.

Eastern Star, saffron yellow, 50c.

Eleanor Grant, almost white, 25c.

Elinor Vanderveer, fine, rose pink, 25c.

Gilda Gray, lilac, shading to Tyrian rose, 25c.

Harry Mayer, purple and lavender, 50c.

Hawaiian Night, deep red, yellow cast, \$1.00.

Ida Perkins, large pure white, 50c.

Ida Tarbell, deep crimson, large, 50c.

Jacques Futrelle, light greenish yellow, 50c.

Jane Cowl, bronzed buff and old gold, 50c.

Jersey Beacon, Chinese scarlet, 25c.

Jersey Beauty, true pink, 25c.

Jersey Fiancee, rose pink, 50c.

J. K. Alexander Jr., the largest crimson red, \$2.00.

Judge Alton Parker, golden buff, 25c.

Mabel Goodacre, pink and salmon, suffused orange, 50c.

Marg. K. Alexander, buff and burnt orange, 50c.

Marg. Woodrow Wilson, opalescent pink, 25c.

Mrs. Edna B. Champlin, rhodamine pink, \$1.00.

Mrs. E. L. Trotter, dark crimson flecked, 50c.

Mrs. George Skeen, shrimp pink, 50c.

Mrs. Ida de Ver Warner, deep mauve pink, 25c.

Mrs. John T. Scheeper, canary yellow and old rose, 25c.

Mrs. R. T. Edwards, pink, reverse plum, 50c.

Nanaquaquet, amaranth pink, 50c.

Pride of California, crimson red, 25c.

Pride of Fort Morgan, crimson red, 50c.

Pride of Stratford, cadmium orange, 50c.

Rocky Ledge, one of the best yellows, 50c.

Rodman Wanamaker, yellow, bronze, salmon pink, 25c.

Rose Alexander, chrome orange, tipped white, 50c.

Salem Pride, purple, flecked white, 50c.

Somerset, salmon and old gold, 25c.

Souv. de G. Doazon, orange-red, 25c.

Walkover Prince, red, flecked orange, 50c.

Wathung Sunrise, 50c.

Yankee King, deep strawberry pink, 50c.

#### Cactus Dahlias

Brides' Bouquet, clear pure white, 25c.

Chemar's Masterpiece, orchid pink, large, 50c.

Countess of Lonsdale, salmon, rose, pink, 35c.

Elkridge, splendid pure white, 50c.

Mrs. Ethel F. T. Smith, white, shading lemon yellow, 35c.

Roycroft, golden bronze, 50c.

Sam. T. Alexander, Japan rose, 75c.

#### Show Dahlias

A. D. Lavoni, soft pink, 25c.

Arabella, sulphur yellow, tipped white, 25c.

James Vick, purple-crimson, 25c.

Maude Adams, white, overlaid pink, 25c.

Miss Helen Hollis, deep scarlet, 25c.

Robert Broomfield, white, 25c.

Vivian, white, edged violet 25c.

White Swan, pure white, 25c.

#### Pompon Dahlias

Amber Queen, amber shaded apricot, 25c.

Golden Queen, pure yellow, 25c.

Prince Charming, purple, 25c.

Raphael, dark maroon, 25c.

Snowclad, pure white, 25c.

#### Dahlias Under Color

Red and Red shades, 12, \$1.00; 100, \$6.00; 1000, \$50.00.

Orange and Orange Shades, 12, \$1.00; 100, \$6.00; 1000, \$50.00.

Maroon and Dark Shades, 12, \$1.00; 100, \$6.00; 1000, \$50.00.

Pink and Lavender Shades, 12, \$1.00; 100, \$6.00; 1000, \$50.00.

Purple and Purple Shades, 12, \$1.00; 100, \$6.00; 1000, \$50.00.

White and Light Shades, 12, \$1.00; 100, \$6.00; 1000, \$50.00.

Yellow and Yellow Shades, 12, \$1.15; 100, \$7.00; 1000, \$60.00.

#### Mixed Dahlias

All large flowering, double varieties. 75c per 12, \$5.00 per 100, \$45.00 per 1000.

#### PEONIES

Nice roots, 3-5 eyes, only 25c each; \$2.50 per 12. Larger roots, 35c each; \$3.50 per 12, any variety, or made up of different varieties.

Red Peonies, Felix Crousse, Torpelieur, David Harum, Lora Deximer, Midnight.

White Peonies, Baroness Schroeder, Avalanche, Mrs. A. G. Ruggles, Mont Blanc, Lucienne, Luella Pfeiffer.

Pink Peonies, Mme. Calot, Nakomis, Gretchen, Henry Avery, Reine Hortense, Pasteur, Christie Goudy, Laperle, Etta.

Rose Colored Peonies, Maud Richardson, Ruth Brand.