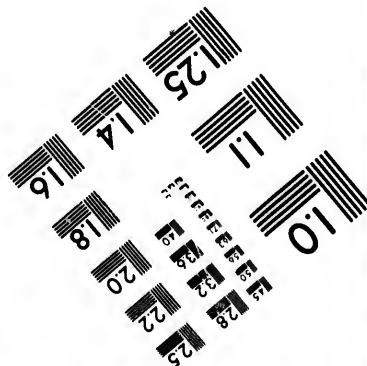
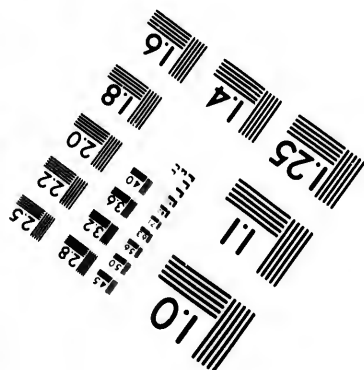
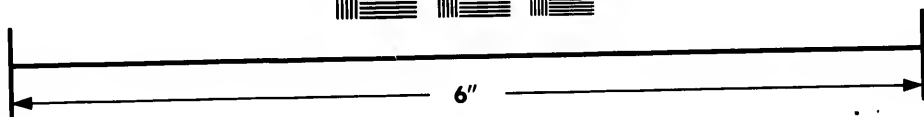
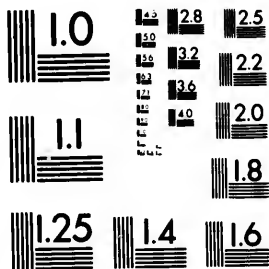


**IMAGE EVALUATION
TEST TARGET (MT-3)**



**Photographic
Sciences
Corporation**

23 WEST MAIN STREET
WEBSTER, N.Y. 14580
(716) 872-4503

15 28 25
12 22
10 20
8

**CIHM/ICMH
Microfiche
Series.**

**CIHM/ICMH
Collection de
microfiches.**



Canadian Institute for Historical Microreproductions / Institut canadien de microreproductions historiques

11
10
8

© 1981

THE ADMIRALTY LIST
OF THE
LIGHTS
IN
SOUTH AMERICA,
AND ON THE
WESTERN COAST OF
NORTH AMERICA.

CORRECTED TO JANUARY 1867.

BY
EDWARD DUNSTERVILLE, COMMANDER R.N.

HYDROGRAPHIC OFFICE, ADMIRALTY.

LONDON:
PRINTED BY GEORGE E. EYRE AND WILLIAM SPOTTISWOODE,
PRINTERS TO THE QUEEN'S MOST EXCELLENT MAJESTY.
FOR HER MAJESTY'S STATIONERY OFFICE.

AND
SOLD BY J. D. POTTER, 31, POULTRY, AND 11, KING STREET, TOWER HILL.
1867.

Price Sixpence.

ncp
527
G786

F. Fixe
Fl. Fla

F. & Pl.

REV. R.

INT. INT.

ALL. A.

Abbreviations and Explanations.

LIGHTS.

- F.** Fixed or Steady.
- Fl.** Flashing. Showing five or more flashes and eclipses alternately in a minute, as North Ronaldsha, Buehanness, Race Islands, &c.
- F. & Fl.** Fixed light with a white or red flash in addition (preceded and followed by a short eclipse) at intervals of two, three, or four minutes, as Alpreck Point, Ile Vierge, &c.
- REV.** Revolving. Light gradually increasing to full effect and gradually decreasing to eclipse, at equal intervals of one, two, or three minutes, but occasionally as often as three times in a minute; as the Casquets, Cordonan, &c.
- INT.** Intermittent. Suddenly appearing in view, remaining visible for a certain time, and then as suddenly eclipsed for a shorter time, as at Burnham in the Bristol Channel, Mull of Galloway, Barra Head, Tarbet-ness, &c.
- ALT.** Alternating. Red and white light alternately at equal intervals, without any intervening eclipse, as Pontallac in the Gironde, &c.

Abbreviations.

B.	Brazilian.	Fr.	French.
B.A.	Buenos Ayrean.	P.	Peru.
B.O.	Banda Oriental.	R.	Russian.
C.	Chile.	U.S.	United States.
Du.	Dutch.	V.	Venezuela.
E.	English.		

ILLUMINATING APPARATUS.

- C.** Catoptric, or by metallic reflectors.
- D.** Dioptric, or by refracting lenses.
- Ord.** Order or Class of apparatus, numbered from the first to the sixth Order.

N. North.—E. East.—S. South —W. West.

The Bearings are Magnetic, and are given from the Ship, not from the Light.

Measurements are given in English feet, yards, and Nautic miles.

The distance the Lights are visible is calculated from a height of fifteen feet above the horizon at high water.

The Coloured Lights are specially noted by CAPITALS in the Remark Column.

** It is requested that any errors or omissions in this work may be pointed out, by letter, to the Secretary of the Admiralty.

SOUTH AMERICA.

No.	Name of Light.	Place.	Latitude.	Longitude. W.	Number of Lights, and Relative Positions.	Fixed, Flashing, Fix & Flash Int., Alt., Revolving.	Interval of Revolution or Flash.	Miles seen in clear Weather
COAST OF GUAYANA.								
1	Trinidad. (E.)	Port Espana, on Jetty.	North. 10 38 40	61 31 0	1 - - -	F.	- - -	10
2	Orinoco River, Light Vessel (V.) In 18 ft. water.	N. of Barima Point.	8 37 0	60 42 0	1 - - -	F.	- - -	8
3	DEMERARA (E.) Light Vessel. In 3½ fathoms.	On E. side of Entrance.	6 49 20	58 11 30	1 - - -	Rev.	Every minute	16
		Ship GUAYANA, N.N.E. ¼ E. about 16 miles from en- trance of River.	6 59 25	58 5 10	1 - - -	F.	- - -	12
	BERBICE. (E.) Light Vessel.	Moored close to E. Point of Entrance.	6 19 18	57 22 30	1 - - -	F.	- - -	10
6	Surlingham. (Du.) Light Vessel in 4 fathoms.	Off Brans Point, N.N.W ¼ W. 3 leagues.	6 4 0	55 9 30	1 - - -	F.	- - -	7
7		SALUT Islets. On W. end of Royale I., on summit of Hospital.	6 17 0	52 32 51	1 - - -	F.	- - -	18
8		Enfant Perdu. On a Rock, 6 miles N. of Cayenne.	6 2 40	52 15 54	1 - - -	F.	- - -	9
9	CAYENNE. (Fr.)	Angle of Infantry Barracks.	4 50 10	52 18 37	1 - - -	F.	- - -	8
10		Cépérou Fort.	4 50 29	52 14 37	1 - - -	F.	- - -	10
11		Jetty, End of.	- - -	- - -	1 - - -	F.	- - -	-

BRAZIL.

12	PARA. (B.)	ATALAIA POINT.	South. 0 34 0	47 17 9	1 - - -	Rev.	Every two minutes.	17
13	ITACOLOMI. (B.)	On Point.	2 10 0	44 24 0	1 - - -	Rev.	Every one and a half minutes for forty-eight seconds.	15
14	Alcantara. (B.)	On Point.	2 25 0	44 22 0	1 - - -	F.	- - -	-
15	San Luiz. Maranhão. (B.)	San Marcos Fort.	2 29 0	44 18 0	1 - - -	F.	- - -	10
16	SANT'ANNA. (B.)	E. Part of Island.	2 16 30	43 38 25	1 - - -	Rev.	Every thirty- two seconds.	14
17	Ceara. (B.)	Macripe Point.	3 41 0	38 29 0	1 - - -	F.	- - -	10
18	Gezele River. Light Vessel (B.)	Off Entrance.	- - -	- - -	1 - - -	F.	- - -	-

erval of
olution
Flash.

Miles
seen to
clear
Weather

No.	Time Harbour Light is shown.	Colour, or any Peculiarity of Light-house.	Height in feet centre of Lantern above High Water.	Height in feet of Building from Base to Vane.	Year lighted.	Character and Order of Illuminating Apparatus.	REMARKS.
-----	------------------------------------	--	--	---	------------------	---	----------

COAST OF GUAYANA.

minute

10

8

16

12

10

7

18

9

8

10

1	Harbour Light.	Hexagonal Tower.	50	43	1841		Seen between the bearings of N.E. by N. and S.E. round by the W. Variation in 1807, 2½° E.
2	All night.	- - -	-	-	1846		Sunk in 1859, not likely to be replaced.
3	- - -	Octagonal Tower; Red and White alternately.	103	100	1829; alt ^d to a Rev. Lt. 1803.	D. 4th Ord.	A Semaphore on summit of Lighthouse. Variation in 1807, 2° E.
4	- - -	Red; with one mast and a Broad Pendant by day.	-	-	1844; imp ^d 1863		Pilots for Demerara and Essequibo Rivers are on board.
5	- - -	A Ball on the Foremast. Roofed over with a Jigger Mast aft.	-	-	1850		The Light bearing S.S.W. in 4 fathoms is the fair way into the Harbour. A Sloop Pilot Boat cruizes outside the Bar constantly, carrying a White Flag, with PILOT inscribed thereon.
6	- - -	Red Ball at the Masthead.	30	-	1859		SURINAM on the Vessel's sides. Variation in 1807, 1° 30' E.
7	- - -	- - -	200	-	1864	C.	A rock of 12 feet, lies 2678 yards N. by W. ¼ W. from Lighthouse.
8	- - -	Iron Piles, Quadrangular.	61	-	1864	O.	
9	- - -	- - -	69	-	1850; imp ^d 1863	C.	GREEN Light. These two lights in one lead over the <i>Aimable Rock</i> , which is avoided by passing W. of this line.
10	- - -	Wooden frame.	130	40	1862	O.	
11	- - -	- - -	39	-	1862	C.	RED Light. Variation in 1807, 0° 22' W.

BRAZIL.

ry two
minutes.

17

15

10

14

10

12	- - -	- - -	-	-	1852		Variation in 1807 2° W.
13	- - -	Square.	147	75	-		WHITE and RED alternately.
14	Harbour Light.	- - -	-	-	1800		A guide to the Anchorage before Alcantara.
15	- - -	- - -	-	-	1829	D. 1st Ord.	Variation in 1807 4° 20' W.
16	- - -	Square, White.	70	80	rebuilt 1861		
17	- - -	- - -	30	-	1847		
18	- - -	- - -	-	-	-		

SOUTH AMERICA.

No.	Name of Light.	Place.	Latitude.		Number of Lights, and Relative Positions.	Fixed, Flashing, Fix & Flash Int., Alt., Revolving.	Interval of Revolutions or Flash.	Miles seen in clear Weather.	No.	Th Harbor is sh
			S.	W.						
BRAZIL.										
10	Rio Grande do Norte. (B.)	Santos Reis Magos, Fortress of.	5 45 0	35 13 15	1 - - -	F.	- - -	12	10	-
20	PERNAMBUCO. (B.)	On Reef, 50 yards from Paeno Fort.	8 3 42	34 51 42	1 - - -	Rev.	Every minute.	15	20	-
21	MACEIO. (B.)	A mile from Anchorage, W. part of Mountain.	0 30 30	35 39 14	1 - - -	F. & Fl.	A flash every two minutes.	22	21	-
22	Cotindiba Bar.	Watch Tower.	11 1 0	36 59 30	1 - - -	F.	- - -	0 to 9	22	-
23	BAHIA, OR SAN SALVADOR. (B.)	FORT SAN ANTONIO.	13 0 55	39 31 44	1 - - -	Rev.	Every eighty seconds.	18	23	-
24		Fort do Mar.	12 58 16	38 28 8	1 - - -	F.	- - -	-	24	Har L.
25	MORRO DE SAN PAOLO. (B.)	ON MORRO.	18 22 35	38 51 48	1 - - -	Rev.	Every minute.	20	25	-
26	ABROLHOS ISLES. (B.)	SANTA BARBARA Island, highest Point.	17 57 42	38 41 30	1 - - -	Rev.	Every minute	17	26	-
27	CAPE FRIO ISLAND. (B.)	FOCINHO DO CABO Point.	23 0 42	41 57 4	1 - - -	Rev.	Every minute and a half.	25	27	-
28	RAZA. (B.)	On Island.	23 5 45	43 8 17	1 - - -	Rev.	Every Two & quarter minutes.	10 to 14	28	-
29	Rio de Janeiro	(B.) Fort Santa Cruz, E. entrance.	22 56 30	43 7 17	1 - - -	F.	- - -	6	29	All
30		(B.) Calhabouco Point.	- - -	- - -	1 - - -	F.	- - -	-	30	-
31	SANTOS. (B.)	Moela Island.	24 2 0	46 13 0	1 - - -	F.	- - -	24	31	-
32	Pernambuco Bay, I. do Mel.	On hillock N.E. part of islet.	25 31 20	48 16 0	1 - - -	F.	- - -	-	32	-
33	SANTA CATHERINA Island.	PONTA DOS NAU-FRAGDOS, South Point.	27 49 30	48 32 30	1 - - -	Rev.	Every minute.	18	33	-
34	RIO GRANDE DO SUL. (B.)	N. Point of entrance $1\frac{1}{2}$ mile from extremity of Point.	32 7 15	52 4 25	1 - - -	Rev.	Every two minutes.	14	34	-
35	PATOS LAKE.	Surezonca. On Island.	31 14 0	52 9 40	1 - - -	- - -	- - -	-	35	H
36		Estreito. On Point.	31 48 30	51 50 0	1 - - -	- - -	- - -	-	36	L
37		Bofuru. (B.) On Point.	31 35 0	51 38 0	1 - - -	F.	- - -	-	37	-
38		Marea. (B.) On Cape.	- - -	- - -	1 - - -	F.	- - -	-	38	-
39		Christovao Pyreza. (B.) On Point.	31 26 0	51 24 0	1 - - -	F.	- - -	-	39	-
40	Barba Negra. (B.) On Isle.	30 37 0	51 15 0	1 - - -	F.	- - -	-	40	-	

No.	Time Harbour Light is shown.	Colour, or any Peculiarity of Lighthouse.	Height in feet, Centre of Lantern, above High Water.	Height in feet of Building from base to Vane.	Year lighted.	Character and Order of Illuminating Apparatus.	REMARKS.
12		Round Tower.	43		impr ^d 1860	C. 3rd Ord.	
15					1824		Twice WHITE and once a RED Light in succession, showing a light every minute. Variation in 1867 10 $\frac{1}{2}$ ° W.
22			208		1856		Fixed Light 70°, eclipse 16°, flash 12° eclipse 22°.
6 to 9			115		1802		WHITE to S.E.; RED eastward; GREEN southward. Vessel should anchor with Red Light in sight in 4 fathoms; with White or Green Light in sight do not go into 5 fathoms.
18			140		1823		Twice WHITE and once a RED Light succeed each other, showing a light every 80 seconds.
	Harbour Light.				1864		RED Light.
20		White.	276	80	1854		Eclipse not total within 8 miles.
17		Iron. Circular.	189	51	1861	D. 1st Ord.	Variation in 1867 5° 35' W.
25		Circular.	622	53	1861	C. 1st Ord.	Visible on the bearings of S.W. to E. or 225°. Variation in 1867 2 $\frac{1}{2}$ ° W. Duration of the total eclipse is 45 seconds.
10 to 14		Red Square.	315	50	1828		WHITE and RED alternately.
6	All night.				1839		Longitude of Fort Villegagnon, 43° 6' 30"
					1850		RED Light.
21		White.	334	40	1831; impr ^d 1863	D. 1st Ord.	
					1861	C. 2nd Ord.	
18		Circular.	140		1861	C. 2nd Ord.	
14			96		1833; rebuilt 1831.	C. 2nd Ord.	Bright 70°, eclipsed 50°. Variation in 1867 5 $\frac{1}{4}$ ° E.
	Harbour Light.				1800		
	Ditto.				1860		
	Ditto.				1860		
					1860		
	Ditto.				1860		
	Ditto.				1860		

BRAZIL.

No.	Name of Light.	Place.	Latitude.		Longitude.		Number of Lights, and Relative Positions.	Fixed, Flashing, Fix & Flash Int., Alt., Revolving.	Interval of Revolution or Flash.	Miles seen in clear Weather	No.	Harb.
			S.	W.	S.	W.						

BUENOS AYRES.

RIO DE LA PLATA.	41	MALDONADO BAY. (B.O.)	EAST PO' ST.	34 58 0	54 56 0	1 - - -	F.	- - -	20	41	-
	42	FLORES. (H.O.)	On Island.	34 57 0	55 55 50	1 - - -	Rev.	Every three minutes.	12	42	-
	43	English Bank Light Vessel in 7 fathoms. (B.O.)	On Tail. N. part of Bank.	35 6 0	55 54 30	1 - - -	F.	- - -	8 to 10	43	-
	44	Pañola Shoal Light Vessel S.W. of	A cable's length N.N.W. $\frac{1}{2}$ W. of shoal.	- - -	- - -	1 - - -	F.	- - -	5 or 6	44	-
	45	MONTE VIDEO. (B.O.)	W. side of Harbour, on Mount.	34 53 16	56 14 30	1 - - -	F. & Fl.	A flash every three minutes for 15 seconds.	25	45	-
	46		Cathedral S. Tower.	34 54 20	56 12 30	1 - - -	F.	- - -	- - -	46	-
	47	Main Bank Light Vessel in 3 $\frac{1}{2}$ fms. (B.A.)	N. E. $\frac{1}{2}$ N. 8 miles from Indio Point.	35 11 30	57 1 15	1 - - -	F.	- - -	8 to 10	47	-
	48	Chico Bank Light Vessel in $\frac{1}{2}$ fathoms. (B.O.)	N. E. $\frac{1}{2}$ N. from Point Atalaya, 11 $\frac{1}{2}$ miles.	34 46 45	57 29 20	1 - - -	F.	- - -	8 to 10	48	-
	49	Colonia. (B.O.)	S.W. angle of Plaza.	34 28 10	57 49 42	1 - - -	Rev.	Every three minutes.	10	49	A
	50	Buenos Ayres. In 2 $\frac{1}{2}$ fathoms. (B.A.)	Guard Ship outer Roads.	34 34 30	58 16 0	1 - - -	F.	- - -	7	50	-

PATAGONIA.

51	FALKLAND ISLANDS. (E.)	Pembroke Capo.	51 40 40	57 41 48	1 - - -	F.	- - -	14	51	-
----	------------------------	----------------	----------	----------	---------	----	-------	----	----	---

CHILE.

52	Chiloe Island, N. part, San Carlos de Aucud. (C.)	Huapilacuy, or Punta Coron.	41 46 45	73 55 45	1 - - -	F. & Fl.	A flash every two minutes.	12	52	-
53	Valdivia.	Niebla Fort Point.	39 53 41	73 24 30	1 - - -	F. & Fl.	- - -	8	53	-
54	Conception Bay, Quiriquina I. (C.)	Talcahuano.	39 36 0	73 6 0	1 - - -	- - -	- - -	- - -	54	-
55	VALPARAISO (C.)	ANGELES, or PLAYA ANCHA POINT.	33 1 10	71 41 30	1 - - -	F. & Fl.	A flash every minute.	20	55	-
56	Huasca. (C.)	- - -	28 28 0	71 19 0	1 - - -	- - -	- - -	- - -	56	-
57	Caldera. (C.)	- - -	27 3 0	70 56 0	1 - - -	- - -	- - -	- - -	57	-

Duration of flash.	Miles seen in clear Weather	No.	Time Harbour Light is shown.	Colour, or any Peculiarity of Light-house.	Height in feet of Lantern above High Water.	Height in feet of Building from Base to Vane.	Year lighted.	Character and Order of Illuminating Apparatus.	REMARKS.
--------------------	-----------------------------	-----	------------------------------	--	---	---	---------------	--	----------

BUENOS AYRES.

Flash of 20	41	.	.	.	152	90	1860	D. Ord.	Variation in 1867 8½° E.
Flash of three minutes. 12	42	.	.	White.	104	65	1853		Not to be depended on.
Flash of 8 to 10	43	.	.	Red with three masts.	.	.	1857; removed 1865		Position not <i>always</i> to be depended on. Variation in 1867 9° 0' E.
Flash of 5 or 6	44	.	.	.	17	.	1868		
Flash of three seconds for 25	45	.	.	Brown.	486	25	Rebuilt 1852	C. 1st Ord.	The flash of 15' is preceded and followed by a short eclipse. Dial plate of clock in the South Tower of Cathedral lighted by gas, which enables vessels to anchor by cross bearings by night
Flash of 8 to 10	46	.	.	.	147	.	1862		
Flash of 8 to 10	47	.	.	Has three masts.	about 30	.	1849; improved 1857.		A black ball at the foremast head. When pilots are on board, a Red and White diagonal flag is hoisted. The Vessel is frequently passed without being seen. Variation in 1867 9° 35' E.
Flash of 8 to 10	48	.	.	Has two masts.	about 20	.	1857		After bad weather the position of this light is not to be depended on.
Flash of three minutes. 10	49	All night.	.	Dull brick.	110	.	1846; improved 1855.		
Flash of 7	50	.	.	Three masts.	about 20	.	1857		Variation in 1867, 10° E.

PATAGONIA.

Flash of 14	51	.	.	Circular. Iron, White and Red Bands.	110	60	1855	C. 1st Ord.	Seen from seaward in every direction, and dark only between N.W. ¼ H. and S.W. ¼ W. Dark towards Ports William and Stanley (which are Free Ports.) Variation in 1867 15½° E.
-------------	----	---	---	--------------------------------------	-----	----	------	-------------	--

CHILE.

Flash of 12	52	.	.	Circular. White. Lantern Green.	197	32	1859	B. 4th Ord.	When the Light bears S. E. by E. you may haul to Southward.
Flash of 8	53	.	.	Square. Wood. White.	121	24	1866	D.	
Flash of 20	54		<i>Proposed.</i>
Flash of very minute. 20	55	.	.	Circular. White.	197	61	1838; rebuilt 1857.	D. 4th Ord.	The flash is preceded and followed by a short eclipse. In coming from the Southward the Light does not open of Curanilla Point until it bears to Eastward of N.N.E. ¼ E. Variation in 1867 16½° E.
Flash of 56	56		<i>Proposed.</i>
Flash of 57	57		<i>Proposed.</i>

10 NORTH AMERICA, SOUTH AND NORTH PACIFIC OCEAN.

NOR

No.	Name of Light.	Place.	Latitude.	Longitude. W.	Number of Lights, and Relative Positions.	Fixed, Flashing, Fix & Flash, Int., Alt., Revolving.	Interval of Revolution or Flash.	Miles seen in clear Weather
-----	----------------	--------	-----------	------------------	---	--	--	--------------------------------------

PERU.

58	CALLAO.	LORENZO I. N. Point.	South. 12 4 0	77 19 30	1 - - -	F.	- - -	12
----	---------	----------------------	------------------	----------	---------	----	-------	----

ECUADOR.

59	GUAYAQUIL (P.)	Near centre Santa Clara Island.	3 10 0	80 26 0	1 - - -	F.	- - -	-
----	-------------------	------------------------------------	--------	---------	---------	----	-------	---

COSTA RICA.

60	Nicoya Gulf.	Punta Arenas.	North. 9 59 34	84 49 21	1 - - -	F.	- - -	0
----	--------------	---------------	-------------------	----------	---------	----	-------	---

MEXICO.

61	Acapuleo.	Summit Roqueta Is- land.	16 50 15	99 52 0	1 - - -	F.	- - -	4 or 5
----	-----------	-----------------------------	----------	---------	---------	----	-------	--------

CALIFORNIA.

62	SAN DIEGO. (U.S.)	Near Point LOMA. W. side entrance.	32 40 15	117 13 30	1 - - -	F.	- - -	25
63	San Pedro. (U.S.)	Fermin Point.	33 40 0	118 18 0	- - -	- - -	- - -	-
64	HUENME. (U.S.)	On Point.	- - -	- - -	- - -	- - -	- - -	-
65	Santa Barbara (U.S.)	On bluff, 2 miles S.W. of landing place.	34 23 35	119 42 5	1 - - -	F.	- - -	12
66	CONCEPTION. (U.S.)	On Point.	34 26 47	120 25 33	1 - - -	Rev.	Every half minute.	23
67	MONTEREY. (U.S.)	Point Pinos, S. side.	36 33 0	121 54 0	1 - - -	F.	- - -	13
68	Santa Cruz Har- bour. (U.S.)	- - -	- - -	- - -	- - -	- - -	- - -	-
69	FARRALLON. (U.S.)	Highest peak of the largest and S.E. Islet.	37 41 40	122 50 5	1 - - -	Rev.	Every minute.	26

No. Har-
is

58

59

60

61

62

63

64

65

66

67

68

69

OCEAN.

NORTH AMERICA, SOUTH AND NORTH PACIFIC OCEAN. 11

l of tion sh.	Miles seen in clear Weather
---------------------	--------------------------------------

No.	Time Harbour Light is shown.	Colour, or any Peculiarity of Light-house.	Height in feet centre of Lantern above High Water.	Height in feet of Building from Base to Vane.	Year lighted.	Character and Order of Illuminating Apparatus	REMARKS.
-----	------------------------------------	--	--	---	------------------	--	----------

PERU.

58	.	Wood, Octagonal Form.	950	60	1837		Not visible from N.W. $\frac{1}{2}$ N. to W. by N. $\frac{1}{2}$ N. just open on latter bearing will lead through Boqueron Channel in 14 fathoms.
----	---	--------------------------	-----	----	------	--	---

ECUADOR.

59	1847		Variation in 1867 $9^{\circ} 57' E.$
----	---	---	---	---	------	--	--------------------------------------

COSTA RICA.

60	.	White.	65	.	1850	D. 3rd Ord.	
----	---	--------	----	---	------	-------------	--

MEXICO.

61	.	.	About 300 feet.	.	1858		For Mail Steamers when expected. Variation 1867 $8^{\circ} 20' E.$
----	---	---	-----------------------	---	------	--	--

CALIFORNIA.

62	.	Stone, Dark.	Mean sea level 457	35	1855	D. 3rd Ord.	On Keeper's dwelling. Give Loma Point a berth of half a mile. Variation in 1857 $18^{\circ} 50' E.$
63	<i>Proposed.</i>
64	<i>Proposed.</i>
65	.	Gray.	180	31	1856	D. 4th Ord.	RED light on Keeper's dwelling.
66	.	White.	250	35	1855	D. 1st Ord.	On Keeper's dwelling. Fog Bell struck by Machinery.
67	.	Gray.	91	35	1854	D. 3rd Ord.	On Keeper's dwelling. Variation in 1867 $15^{\circ} 10' E.$
68	D. 4th Ord.	<i>Proposed.</i>
69	.	Brick.	300	20	1855	D. 1st Ord.	

.	12
---	----

.	.
---	---

.	0
---	---

.	4 or 5
---	--------

.	25
---	----

.	.
---	---

.	.
---	---

.	12
---	----

half ute.	23
--------------	----

.	13
---	----

.	.
---	---

minute.	26
---------	----

12 NORTH AMERICA AND NORTH PACIFIC OCEAN.

No.	Name of Light.	Place.	Latitude.		Longitude.		Number of Lights, and Relative Positions.	Fixed, Flashing, Fix & Flash Int., Alt., Revolving.	Interval of Revolution or Flash.	Miles seen in clear Weather
			N.	W.	N.	W.				

CALIFORNIA.

70		BONITA or N. Point.	37 49 4	122 30 50	1	-	-	F.	-	24	
71	SAN FRAN- CISCO. (U.S.)	LOBOS, on Point.	-	-	-	-	-	F. & Fl.	-	-	
72		Fort or S. Point.	37 43 31	122 27 38	1	-	-	F.	-	17	
73		Alcatraz Island.	37 43 27	122 24 19	1	-	-	F.	-	14	
74	REYES. (U.S.)	On Point.	37 53 37	123 0 16	1	-	-	F. & Fl.	A flash every 15 seconds.	-	
75	MENDOCINO. (U.S.)	On Cape.	40 20 0	124 32 0	1	-	-	-	-	-	
76	HUMBOLDT HARBOUR. (U.S.)	N. side of Entrance.	40 46 4	124 12 10	1	-	-	F.	-	12	
77	Crescent City. (U.S.)	Seaward extremity of Island point, forming southern and western side of Harbour.	41 44 34	124 11 22	1	-	-	F. & Fl.	A flash every minute and a half.	14	
77*	Cape Gregory or Arago Point.	Small Island, Western extremity.	43 20 38	124 22 20	1	-	-	Fl.	Every two minutes a flash of three seconds.	15	
78	C. HANCOCK. (U.S.)	On pitch of Cape, Columbia River.	46 10 35	124 2 0	1	-	-	F.	-	22	
79	SHOALWATER BAY.	North Cape.	46 44 11	124 2 24	1	-	-	F. & Fl.	Every minute and half.	14	
80	JUAN DE FUCA STRAIT.	CAPE FLATTERY. (U.S.)	Tatooc Island, Toke Point, highest Point, $\frac{1}{4}$ a mile N.W. of Cape.	48 23 20	124 43 48	1	-	-	F.	-	10
81		New Dunge-ness. (U.S.)	N. end of Sand Spit, $\frac{1}{4}$ of a mile.	48 10 59	123 6 7	1	-	-	F.	-	14
82		BLUNT OR SMITH ISLAND. (U.S.)	Highest part.	48 19 11	122 50 0	1	-	-	Rev.	Every half minute.	13
83		RED BLUFF. Puget Sound,	ADMIRALTY HEAD, WHIDBEY ISLAND.	48 9 21	122 40 8	1	-	-	F.	-	17

No.	Harb is
70	-
71	-
72	-
73	-
74	-
75	-
76	-
77	-
77*	-
78	-
79	-
80	-
81	-
82	-
83	-

Position of Light.	Miles seen in clear Weather	No.	Time of Harbour Light is shown.	Colour, or any Peculiarity of Light-house.	Height in feet centre of Lantern above High Water.	Height in feet of Building from Base to Vane.	Year lighted.	Character and Order of Illuminating Apparatus.	REMARKS.
		70	- - -	White. Brick Tower.	Mean sea level 306	45	1855	D. 2nd Ord.	Fog Bell struck by Machinery. Variation in 1867 15 $\frac{1}{2}$ ° E.
		71	- - -	- - -	- - -	- - -	- - -	D. 2nd Ord.	Building. Fog Bell.
		72	- - -	Iron, White.	137	121	1855	D. 5th Ord.	Fog Bell struck by machinery, and a Fog Horn sounded every five minutes.
		73	- - -	White.	166	30	1854	D. 3rd Ord.	Fog Bell struck by machinery.
		74	- - -	- - -	- - -	- - -	- - -	D. 2nd Ord.	Building.
		75	- - -	- - -	- - -	- - -	- - -	D. 1st Ord.	Building.
		76	- - -	White. Lantern Red.	53	45	1850	D. 4th Ord.	On Keeper's dwelling. Variation in 1867 13 $\frac{1}{2}$ ° E.
		77	- - -	Stone.	80	35	1856	D. 4th Ord.	On Keeper's dwelling. The flash is preceded and followed by a short eclipse.
		77*	- - -	Iron, Octagon. White. Domo of Lantern Red. White.	75	-	1806	[D. 4th Ord.	Variation in 1867 18 $\frac{1}{2}$ ° E. Keeper's dwelling White on S. extremity of Island, about 350 yards from light.
		78	- - -	White.	230	40	1858	D. 1st Ord.	Fog Bell struck by machinery. Variation in 1867 20 $\frac{1}{2}$ ° E.
		79	- - -	Stone.	80	35	1856	D. 4th Ord.	On Keeper's dwelling.
		80	- - -	White. Lantern Red.	102	64	1857	D. 1st Ord.	On Keeper's dwelling.
		81	- - -	Upper half, Black. Lower half, White. Lantern Red.	100	80	1837	D. 3rd Ord.	On Keeper's dwelling, a Fog Bell at outer end of Spit, rung every ten seconds, and Horn sounded every five minutes.
		82	- - -	White. Lantern Red.	90	35	1858	D. 4th Ord.	On Keeper's dwelling.
		83	- - -	White. Lantern Red.	110	41	1860	D. 4th Ord.	On Keeper's dwelling, illuminated 270° of horizon.

CALIFORNIA.

No.	Name of Light	Place.	Latitude.		Longitude.		Number of Lights, and Relative Positions	Fixed, Flashing, Flk & Flash Int., Alt., Revolving.	Interval of Revolution or Flash.	Miles seen in clear Weather.
			W.	E.	W.	E.				

BRITISH COLUMBIA.

84	VANGOUVER I.	RACE IS- LANDS.	On Rocks.	48 17 36	123 32 15	1	-	-	-	Fl.	White flash every ten seconds.	18
				85	Esquimalt. (E.)	Fisgard Island Sum- mit. S. Point.	48 25 38	123 27 17	1	-		
86	GULF OF GEORGIA.	Fraser River Light Vessel in 10 fathoms.	South Sand Heads	49 3 30	123 17 16	1	-	-	-	F.	-	11

SOCIETY ISLANDS.

87	TAHITI.	Venus Point.	17 30 0	149 29 0	1	-	-	-	F.	-	0
----	---------	--------------	---------	----------	---	---	---	---	----	---	---

HAWAII GROUP, OR SANDWICH ISLANDS.

88	KARAKAKOA B., Hawaii or Owhyhee I.	-	19 23 0	155 55 0	1	-	-	-	-	-	-
89	C. Kawaihoa, Oonehow I.	-	21 45 0	160 12 0	1	-	-	-	-	-	-

EASTERN PART OF ASIA.

90	AVATCHKA GULE.	DALNI. (R.)	On E. side of En- trance	52 52 51	158 47 2	1	-	-	-	F.	-	24
91		BABOUSHKIN POINT. (R.)	On second Point of W. side of Entrance.	52 54 45	158 42 37	1	-	-	-	F.	-	19
92		RAKOF. (R.)	On Signal Station, about half a mile S. of Entrance to Ra- kovya Harbour.	52 37 32	158 43 37	1	-	-	-	F.	-	22

val of tion ash.	Miles seen in clear Weather.
flash ten nds.	13
-	10
-	11

No.	Time Harbour Light is shown.	Colour, or any Peculiarity of Light-house.	Height in feet centre of Lantern above High Water.	Height in feet of Building from Base to Vane.	Year lighted.	Character and Order of Illuminating Apparatus.	REMARKS.
-----	------------------------------------	--	--	---	------------------	---	----------

BRITISH COLUMBIA.

84	- - -	Tower, Stone, with 5 Alternate Horizontal Bands, Black and White.	118	- -	1861	D. 2nd Ord.	Fog bell. S.E. by E., 3 or 4 cables length is a reef, having 5 feet thence. Variation in 1867 2 1/2° E.
85	- - -	White, Iron, Lantern, Red.	70	57	1860	D. 4th Ord.	Variation in 1867 22° 0' E. It shows WHITE when bearing from N. 1/2 W. to N. W. by W. 1/2 W., and RED towards harbour, or from N.W. by W. 1/2 W. round west to S.S.E. 1/2 E. Eclipsed to the westward. GREEN between N. by E. 1/2 E., and N. 1/2 W.
86	- - -	Red, with two Masts. On the mainmast is a Ball.	About 54	- -	1860	C. 6th Ord.	Name on her sides WHITE. Bell in foggy weather sounded. Variation in 1867 22° 50' E.

SOCIETY ISLANDS.

87	- - -	- - -	- -	- -	1850	- -	Variation in 1867 7° 45' E.
----	-------	-------	-----	-----	------	-----	-----------------------------

HAWAII GROUP, OR SANDWICH ISLANDS.

88	- - -	- - -	- -	- -	- -	- -	Building. On Point where Captain Cook, R.N., was killed.
89	- - -	- - -	- -	- -	- -	- -	Building. Variation in 1867 9° 19' E.

EASTERN PART OF ASIA.

90	- - -	- - -	440	21	- -	- -	Visible on the bearings of E. by N. round Southerly to N.W. 1/2 W. A telegraph communication with Petropaulski. Va- riation in 1867 4° E. These Lights are included in this list to accompany the Charts issued to Her Majesty's Ships on the Pacific Station.
91	- - -	- - -	204	9	- -	- -	
92	- - -	- - -	578	0	- -	- -	

24
10
22

INDEX

TO THE

LIGHTS

IN

SOUTH AMERICA, AND ON THE WESTERN COAST OF
NORTH AMERICA.

JANUARY 1867.

Names.	No.	Names.	No.
A.			
ABROLHOS ISLES	20	COSTA RICA	60
Acapulco	81	Crescent City	77
ADMIRALTY HEAD	83	Cruz Santa, Harbour	68
Amble Rock	9, 10	D.	
Alcantara Point	74	DALNI	90
Alcatraz, I.	73	DEMEBARA	3, 4
AMERICA, N.W. COAST	70 to 86	— Light Vessel	5, 4
Ancha Point	55	DIEGO, SAN	62
ANCHU	52	DUNGENESS, NEW	81
ANGLES POINT	55	Do Mar Fort	24
ANNA ISLAND, SANTA	16	E.	
ANTONIO, SAN FORT	23	EAST POINT	5, 41
Arago Point	77*	ECUADOR	59
Arenas Punta	60	Enfant Perdu	8
ASIA, Eastern Part	90 to 92	English Bank, Light Vessel	45
ATALAYA POINT	12	Espana Port	1
Atalaya Point	88	Esquimalt	85
AVATCHKA GULF	90 to 92	Essequibo River	4
B.			
BAROUSHEIN POINT	91	Estrecho Point	36
BAYIA OF SAN SALVADOR	23, 24	F.	
Barba Negra Isle	40	FALKLAND ISLANDS	51
BARBARA SANTA AND I.	26, 65	FARRALLON	69
Barima Point	2	Fermin Point	63
BEBBICE, Light Vessel	5	Fisgard I.	85
BLETZ I.	82	FLATTERY CAPE	80
Bojura Point	37	FOBBS I.	42
BONITA POINT	70	FOCINHO DE CABO POINT	27
BOQUERON CHANNEL	58	— Do Mar	10
Brams Point	6	— Niebla	24
BRAZIL	12 to 40	— PACAO	33
BRITISH COLUMBIA	84, 86	— Point	20
Buenos Ayres	41 to 50	— SAN ANTONIO	72
— Light Vessel	50	— Marcos	23
C.			
Chidra	57	— Santa Cruz	26
Calihonoco Point	30	— Santos Reis Magos	19
CALIFORNIA	62 to 83	Fraser River	86
CALLAO	68	FRIO, CAPE	27
CAYENNE	7 to 11	G.	
Ceara	17	Georgia Gulf	86
Cepéron Fort	10	Gonzalo River	15
Chico Bank	48	GRANDE, RIO	19, 24
CHILE	53 to 57	Gregory Capo	77*
Chiloe I.	52	GUAYAQUIL	59
Christovao Peryro Point	39	GUAYANA	1 to 11
CLARA ISLAND, SANTA	59	— Light Vessel	4
Colonia	49	H.	
COLUMBIA, BRITISH	84, 86	HANCOCK, O.	78
— RIVER	78	Huaplay Point	52
CONCEPTION BAY	66	HAWAII GROUP	83, 89
— Point	54		
Contindila Bar	22		
CORONA PUNTA	52		

INDEX.

<i>Names.</i>	<i>No.</i>
Huasca	56
HUENNE POINT	64
HUMBOLDT HARBOUR	76

I.

Indio Point, Light Vessel	47
Infantry Barracks	9
Islo do Mel	32
ITACOLOMI POINT	13

J.

JUAN DE FUCA STRAIT	80 to 83
-------------------------------	----------

K.

KARAKAKOA I.	88
Kawaihoa C.	89

L.

La Plata River	41 to 50
Lobos	71
LOMA POINT	62
LORENZO I.	68
Luiz, San (Maranham)	15

M.

MACEIO	21
Maeoripo Point	17
Main Bank	47
Maranham	15
Marca Cape	38
Marcos Fort, San	15
Mar do Fort	24
MALDONADO	41
Mel do Island	32
MENDOCINO CAPE	75
MEXICO	61
Mocha Island	31
MOSTE VIDEO	45, 46
MONTEBEY	67
MORRO DE SAN PAOLO	25

N.

NAUFRAGADOS DOS PONTA	33
NEW DENGENESS	81
Nicoya Gulf	60
North America, W. Coast	62 to 86
Niebla Fort	63

O.

Oneheow I.	89
Orinoco River	2
Ortiz or Maha Bank	47
Owhyhee or Hawaii I.	85, 89

P.

PACAO FORT	29
Pañola Shoal	44
PAOLO SAN	25
PARA	12
Paranagua Bay	32
PATAGONIA	51
Pedro, San	65
PEMBROKE CAPE	51
PERAMBUCO	26
PERU	53
Petropaulski	90
Pinos Point	67
PLATA, RIO DE LA	41 to 50
Playa Ancha Point	55

<i>Names.</i>	<i>No.</i>
Plaza	40
PONTA DOS NAUFRAGADOS	33
Port Espana	1
— Stanley	57
— William	51
Puget Sound	83
PUNTA ARENAS	66
— CORONA	52

Q.

Quiriquina I.	54
-----------------------	----

R.

RACE ISLANDS	84
RAKOF	62
RAKOVA Harbour	92
RAZA	28
RED BLUFF	83
REYES POINT	74
RIO DE JANEIRO	29, 30
— GRANDE DO SUL	34
— Norte	19
— LA PLATA	41 to 50
Roqueta I.	61
Royalo I.	7

S.

SALUT ISLES	7
SAN ANNA ISLAND	16
— ANTONIO FORT	23
— Carlos de Aued	52
— DIEGO	62
— FRANCISCO	79 to 73
— Luiz	15
— Marcos Fort	15
— PAOLO	25
— Pedro	63
— SALVADOR, or Bahia	23, 24
Sand Spit	81
SANDWICH ISLANDS	88, 89
SANTA ANNA	18
— BARBARA AND I.	25, 65
— Catharina Island	33
— Clara Island	59
— Cruz Fort	29
— Harbour	68
SANTOS	31
— Reis Magos Fort	19
Shoalwater Bay	79
SMITH I.	82
SOCIETY ISLANDS	87
South Sand Heads, Georgia Gulf	86
Surenzoca I.	35
Surinam, Light Vessel	0

T.

TAHITI	87
Talcahuano	54
TATOUC I.	80
Take Point	80
Trinidad	1

V.

Valdivia	53
VANCOUVER ISLAND	84, 85
VALPARAISO	55
VENUS POINT	87

W.

Watch Tower	22
WHIDDEY I.	83

ST OF

No.
60
77
68
90
3, 4
62
81
24

5, 41
59
8
43
1
85
4
36

61
69
63
85
89
42
27
10
24
53
20
72
23
15
39
19
86
27

86
18
19, 34
77*
59
1 to 11
4

73
62
88, 89

LONDON:
Printed by GEORGE E. EYRE and WILLIAM SPOTTISWOODE,
Printers to the Queen's most Excellent Majesty.
For Her Majesty's Stationery Office.

[10481.—250.—12/66.]

