

GENERAL HEADQUARTERS, FAR EAST COMMAND
ADJUTANT GENERAL'S OFFICE
RADIO AND CABLE CENTER

INCOMING MESSAGE

Confidential
ROUTINE

SM/rdm/PTS

22 Oct 49

FROM : DA WASH DC
TO : SCAP (ACTG USPOLAD) TOKYO JAPAN
INFO : CSUSA WASH DC
NR : 220806 Z (RELAYS MSG FROM STATE DEPT DTG 220218 Z)
(STATE SRL 532, OCT 21, 7 PM SIGNED ACHESON)

Subject is summary FEC Meeting Oct 21, 1949.
Fishing and aquatic industries in Jap (FEC 271/33).
Soviet amendment to Para 2 B providing that "no
extension of Jap fishing or other commercial aquatic
activities beyond the foregoing area should be permitted
without prior authorization by the FEC" Reintroduced and
defeated by vote of one in favor 7 against and 3 abstentions
(Chi, India, Phil) (FEC 271/33) defeated by vote of
8 in favor, 3 against (Chi, USSR and Phil).

Jap participation in internatl relations (FEC 339).
USSR member stated that in connection with US reply
of Oct 13, 1949 (FEC 339/12) to his statement on question
Japs adherence to UPU, his govt considered arguments
advanced by US as to legality of Japs adherence to UPU
unfounded. Sov del confirmed statement of Oct 6 that Japs
adherence to UPU cannot be recognized as legal until ap-
propriate decision has been reached by FEC. US member
pointed out that views of his govt had been circulated.

Under other business Neth member suggested removal
of inactive items from agenda. Upon objection of USSR,
Chi, Indian, Austral members, no action taken at this
meeting.

ACTION : DIPLOMATIC

NO SIG

INFORMATION : COMMANDER IN CHIEF, CHIEF OF STAFF, GOVT
21167 ROUTINE TOO : 220806 Z

MCN : 53515

Paraphrase not required. Handle as correspondence of classification carried hereon
per paragraphs 51i and 60a, AR 380-5.

✓
GENERAL HEADQUARTERS, FAR EAST COMMAND
ADJUTANT GENERAL'S OFFICE
RADIO AND CABLE CENTER

1520
K

INCOMING MESSAGE

SM/mmc/SM

UNCLASSIFIED
ROUTINE

20 Oct 49

FROM : SCAP FOREIGN TRADE OFFICE NEW YORK NY
TO : SCAP TOKYO JAPAN
INFO : DA WASH DC
NR : 191630 Z

This YON 1400.

Nacichi Fukumura, Japanese National Managing Director Fish Liver Oil Development Company now in United States under authorized exchange system holding Japanese Passport Number 643 valid until 1 February 1950. Authorized stay 50 days and at present must leave country 25 November 1949 under immigration regulations. Fukumura requests 90 day extension authorized stay because of large territory still to be covered and complex subject under investigation. He states dollar exchange available his company ample to cover requested extension and understands longer visits United States now being authorized than when he applied. Advise if authorized. Advice should include authorization Pacific Military Permits Branch, MDW to extend passport date.

ACTION : G-1

NO SIG

INFORMATION : AG, ECON & SCI

ADDED DIST : COMMANDER IN CHIEF, CHIEF OF STAFF, TRANSP, CIV
COMM, GOVT, PUBLIC H & W, CIV I & E, LEGAL, NAT
RESOURCES, DIPLOMATIC (20 Oct 49)

20196

ROUTINE
UNCLASSIFIED

T00 : 191630 Z
MCN : AUA 67/19

Handwritten notes:
G-1
Ryzu
Hauge
J=

GENERAL HEADQUARTERS, FAR EAST COMMAND
ADJUTANT GENERAL'S OFFICE
RADIO AND CABLE CENTER

INCOMING MESSAGE *Confidential* AFA

Confidential
ROUTINE

20 Oct 49

FROM : DA WASH DC
TO : SCAP (USPOLAD) TOKYO JAPAN
INFO : CSUSA WASH DC
NR : 192345 Z (RELAYS MSG DTG 192008 Z FM STATE DEPT)
(STATE SRL 521 OCT 19 2 PM SIGNED ACHESON)

"Summary of FEC mtg Steering Comite at Oct 18 mtg approved (8 in favor, USSR, Chi, and Phil opposed) SC 271/30. After amending 5th line of Para 2 B to read "Asserts a direct concern in respect to fishing or other commercial aquatic activities, SCAP will consult with such country with a view to reaching an agreement reasonable calculated to protect that countrys legitimate interest and to benefit the Jap economy." In Para 5 the words 'as effecting' were approved for 'to apply to'. Expected USSR and Chi will veto paper when considered by FEC Oct 20.

Chi efforts to amend proposed fishing area were unsuccessful as was Sov proposal that paper be amended to limit any extension of the area without prior authorization of FEC. Chi particularly oppose extension of fishing inspection area close to Chi coast. Sovs again requested complete conservation program for Jap fishing industry.

Chi inquiry whether reference to miles used in Par 2 D, SCAP-in 1033/2 is to 'nautical' miles. Please advise meaning of this term."

ACTION : DIPLOMATIC

NO SIG

INFORMATION : COMMANDER IN CHIEF, CHIEF OF STAFF, GOVT, ECON & SCI, NAT RESOURCES

20318

ROUTINE
Confidential

TOO : 192345 Z
MCN : 53413

Paraphrase not required. Handle as correspondence of classification carried hereon per paragraphs 51i and 60a, AR 380-5.

✓
GENERAL HEADQUARTERS, FAR EAST COMMAND
ADJUTANT GENERAL'S OFFICE
RADIO AND CABLE CENTER

INCOMING MESSAGE

JA/bjp/TER

UNCLASSIFIED
PRIORITY

20 Oct 49

FROM : HICPAC HICKAM AFB TH
TO : FAIRPAC FAIRFIELD CALIF
INFO : SCAP TOKYO JAPAN, CG MARBO GUAM, CG USARPAC FT SHAFTER TH,
CG SIXTH ARMY PRESIDIO OF SAN FRAN CALIF, GUMPAC HARMON
FIELD GUAM
NR : HICPAC 722

Ref SCAP msg ZX 26090 dtd 14 Oct 49. US Senator H Alexander Smith and Mrs Smith scheduled depart John Rodgers Naval Air Station aboard MARS Flt 22-21 at 210230 Z ETA Alameda 211630 Z. Request commercial air reservation to New York City for Senator and Mrs Smith on United Air Lines Flight 600 departing San Fran Municipal Airport at 2130 PST Friday 21 Oct 49.

KUZNICKI

INFORMATION : COMMANDER IN CHIEF, CHIEF OF STAFF, G-1, G-4, AG,
GOVT, DIPLOMATIC

20320

PRIORITY
UNCLASSIFIED

T00 : 200050 Z
MCN : AUB 23/20

GENERAL HEADQUARTERS, FAR EAST COMMAND
ADJUTANT GENERAL'S OFFICE
RADIO AND CABLE CENTER

✓
Misc

Confidential
INCOMING MESSAGE
COURIER

EFF/cem/000

19 Oct 49

FROM : CG EIGHTH ARMY YOKOHAMA JAPAN
TO : SCAP (LEGAL SECT) TOKYO JAPAN
NR : E 36782 YO

British Commonwealth Occupation Forces are holding in custody at Kure an alleged Formosan Chin Fu on charges of receiving stolen goods. Age 31 present address Onhasori-Shi, Higashi, Gosho-Machi occupation restaurant proprietor.

Req verification as Chinese National for purpose of trial by Provost Court. If verified as Chinese National request appointment of Chinese representative or substitute representative.

NO SIG

ACTION & LEGAL

INFORMATION : COMMANDER IN CHIEF, CHIEF OF STAFF, G-2, AG,
PROVOST MARSHAL, GOVT, DIPLOMATIC

20121

COURIER

Confidential

TOO : 19 NPT
MCN : NONE

Paraphrase not required. Handle as correspondence of classification carried hereon per paragraphs 51i and 60a, AR 380-5.

GENERAL HEADQUARTERS, FAR EAST COMMAND
ADJUTANT GENERAL'S OFFICE
RADIO AND CABLE CENTER

JA
bry

JA

INCOMING MESSAGE

Confidential
ROUTINE

18 Oct 49

FROM : DA WASH DC

TO : SCAP (USPOLAD) TOKYO JAPAN

INFO : CSUSA WASH DC

NR : 172250 Z (RELAYS MSG DTG 171751 Z FROM STATE DEPT TO
SCAP) (STATE SERIAL 511 OCT 17, 1 PM SIGNED ACHESON)

Subj is Summary Steering Comite mtg, Oct 11, 1949.

Fishing and aquatic industries In Jap (SC 271/30).

UK member proposed to amend US amendment to Para 2 B, so that sentence after words "FEC" in fifth line wld read as fols: "Asserts a direct concern in respect to fishing or other commercial aquatic activities SCAP will consult with such country with a view to reaching an agreement reasonable calculated to protect that country's legitimate interest and to benefit the Jap econ." US, Canada, Fr, India, Austral and NZ members indicated they cld accept UK amendment. Phil member reserved his position.

USSR member asked to have his amendment to Para 2 B re-considered. Chi member thought his del cld accept UK amendment to Para 2 B if Para 2 A were revised to read as it appeared in SC-271/22 and proposed an amendment to Para 2 A to that affect. US member indicated his opposition to such amendment.

Chi member raised question of inspection vessels proceeding within 10 miles of coast of any fon country. Subj referred to working comite. Fol is summary FEC mtg, Oct 13, 1949.

Level of econ life in Jap, FEC 242/32.

Sov member asked for comments of other members on his amendments. US member pointed out that his statement of May 12 covered US position of subj.

ACTION : DIPLOMATIC

NO SIG

INFORMATION : COMMANDER IN CHIEF, CHIEF OF STAFF, GOVT,
ECON & SCI, NAT RESOURCES

19557

ROUTINE

TOO : 172250 Z

MCN : 53328

Confidential

Paraphrase not required. Handle as correspondence of classification carried hereon per paragraphs 51i and 60a, AR 380-5.

GENERAL HEADQUARTERS, FAR EAST COM. AND
ADJUTANT GENERAL'S OFFICE
RADIO AND CABLE CENTER

1015
GGG
ceb
GOUT

INCOMING MESSAGE

GGG

[Handwritten signature]
ROUTINE

13 Oct 49

FROM : DA WASH DC
TO : SCAP (USPOLAD) TOKYO JAPAN
INFO : CSUSA WASH DC
NR : 130704 Z (PASSES MSG DTG 130109 Z FROM STATE DEPT)
(STATE SERIAL 499 OCT 12, 7 PM SGD ACHESON)

Subj is summary FEC Mtg, Oct 6, 1949. Restitution of looted property prs FEC 271/25.

Comm agreed to amend penultimate sentence of par 8, FEC 011/51, as fols:

"The secured fund should finally be distributed among the countries herein specified in accordance with the percentages mentioned above, or in accordance with a schedule of shares to be agreed upon by such countries, payable in US dollars or, at the discretion of the SCAP, in fon exchange acceptable to the countries concerned," by vote of 10 in favor with 1 abstention (USSR).

Chi Member expressed hope US would participate in discussions to be held by 7 countries to determine scheduled of shares. It appeared to be gen consensus of Comm that agreement reached by comite of 7 countries need not be referred to Comm for its approval, that comite was not mtg under auspices of Comm, but that comite might notify Comm of its results so that necessary directive might be issued to SCAP.

Fishing and Aquatic Industries in Jap (FEC 271/25).

US Member distributed FEC 271/28, reply to Sov query of Sep 15 on fishing inspection and FEC 271/29, reply to Sov query re NY Times art on expansion of SCAP of area authorized of Jap

General
cut
Ryz
Hauge

(over)
ROUTINE

Paraphrase not required. Handle as correspondence of classification carried hereon per paragraphs 51i and 60a, AR 380-5.



Confidential
ROUTINE

FROM : DA NR : 130704 Z DTD 13 OCT 49 CONTINUED

fishing. US Member reintroduced its amendment to par 2 B that had been defeated in steering Comite. Austral Member stated US amendment not acceptable to his govt since it required assurance that SCAP would do more than attempt to reach an agreement with country which felt it had a direct concern in area in which further expansion of fishing area was contemplated. He stated his govt could accept par 2 B as it appears in FEC 271/25 with US statement of understanding if that were wish of majority. Chi Member proposed that all of par 2 B after words "FEC" in fifth line be deleted and replaced by fol: "Claims a direct concern in respect to fishing or other commercial aquatic activities, SCAP shall secure consent of such country to an agreement reasonably calculated to protect the legitimate interests of such country and to benefit the Jap economy." Comm agreed to refer item back to steering comite.

Level of economic life in Jap (FEC 242/32, FEC 297/10).

Sov member stated his proposals were not inimical to development of peaceful branches of Jap industry and requested that Comm consider them. Indian member pointed out he could see little difference between substance of US position presented on May 12, 49 and Para 1 of USSR statement in FEC 232/37. No further discussion Jap participation in intermatl relations (FEC 339).

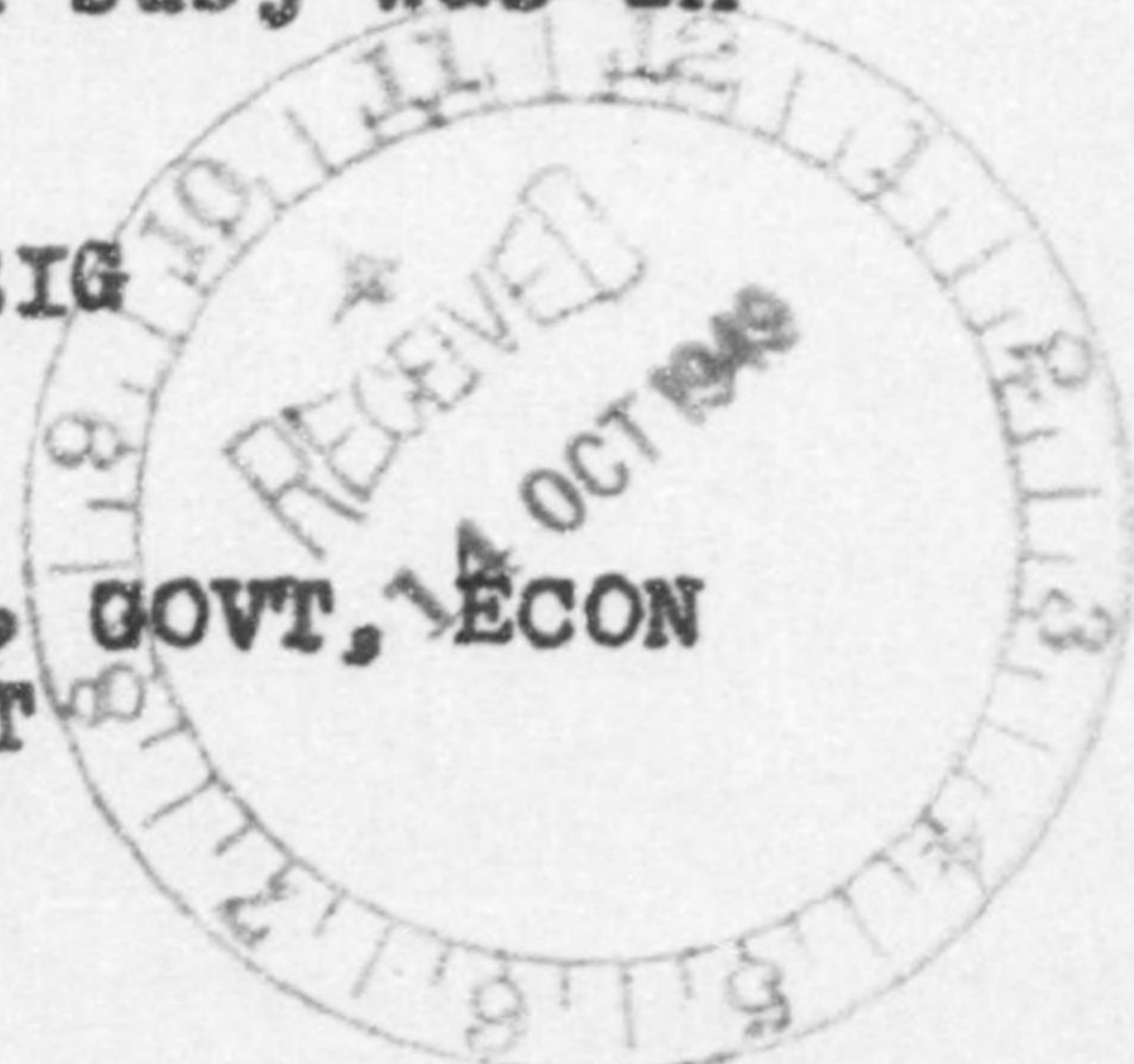
Re Jap adherence to UPU, USSR member stated his govt believes that as matter of principle it is possible to permit Jap to adhere to Universal Postal Convention, but that such permission should be granted by FEC. Therefore his government believes that Japs adherence to the Universal Postal Convention was performed in violation of terms of reference of FEC and therefore cannot be recognized as legal until appropriate decision on question has been reached by FEC.

Under other business Sov member reiterated inquired re econ deconcentration. Phil member inquired as to report in NY Times that earmarked gold had been delivered to FR and Thailand. Deputy SYG pointed out directive issued by US on subj was in process of being circulated.

NO SIG

ACTION : DIPLOMATIC

INFORMATION : COMMANDER IN CHIEF, CHIEF OF STAFF, GOVT, ECON & SCI, NAT RESOURCES, CIV PROP CUST



18517

ROUTINE

Confidential

TOO : 130704 Z
MCN : 53188

265711
✓

15 Oct 49
1005

misc

To: Major Napier

Visitors' Bureau had no information on George Herman. said that all CBS people were handled exclusively by PIO. Major Williamson, Executive PIO stated arrangements had been made to meet Mr. Herman but time of arrival unknown. Pan American Airlines is the only airline ~~one~~ running world tours and the only one on which Mr. Herman would come in. They have no record of him but they have not as yet received passenger list on flight 821 which arrives at 1516 today.

J. By

Major Napier,

DS referred me to PIO. As far as
Maj. Williamson (who handles this function)
knows, GEORGE HERMAN will arrive in Tokyo
Oct 15 and leave for Korea about the 23rd....

cns

15 out
Ask V B
about him

GENERAL HEADQUARTERS, FAR EAST COMMAND
ADJUTANT GENERAL'S OFFICE
RADIO AND CABLE CENTER

INCOMING MESSAGE

WG
egw

TBB

UNCLASSIFIED
ROUTINE

12 Oct 49

FROM : SEC STATE WASH DC
TO : SCAP TOKYO JAPAN, AMEMBASSY SEOUL KOREA, AMEMBASSY MANILA PI
NR : 120220 Z (SENT MANILA 1228 RPTD TOKYO 1494 SEOUL 851 11TH)

George Herman CBS correspondent world tour approx dates,
Oct 15 Tokyo 23 Korea Nov 1st. Extend courtesies.

ACHESON

ACTION : PUBLIC INFORMATION

INFORMATION : COMMANDER IN CHIEF, CHIEF OF STAFF, G-1, G-2,
AG, DIPLOMATIC

DS -

18036

ROUTINE
UNCLASSIFIED

TOO : 120220 Z
MCN : AUA 32/12

✓
42
GENERAL HEADQUARTERS, FAR EAST COMMAND
ADJUTANT GENERAL'S OFFICE
RADIO AND CABLE CENTER

WG
ewj

INCOMING MESSAGE

APA

UNCLASSIFIED
ROUTINE

12 Oct 49

FROM : SEC STATE WASH DC
TO : SCAP TOKYO JAPAN
NR : 601 11TH (RELAY FROM JIDDA) (BOOK MESSAGE)

REDEPTEL 392 Oct 5 and SCAP Tokyo tels Oct 3 and 6 Embassy presented request today for authorization visa for Garey.

In reply request that every effort be made hasten matter FONOFF replied would do its best but that Garey would have to visit nearest SAG Rep to obtain visa and that since none in Japan most convenient place likely be Karachi.

SCAP requested inform if stop at Karachi suitable Garey (Hill).

ACHESON

ACTION : GOVT

INFORMATION : COMMANDER IN CHIEF, CHIEF OF STAFF, G-1, AG,
DIPLOMATIC

NOTE : Ref rads are SCAP's Z 25041 and Z 25290 (GOVT).

18110

ROUTINE
UNCLASSIFIED

T00 : 120640 Z
MCN : AUB 62/12

✓
GENERAL HEADQUARTERS, FAR EAST COMMAND
ADJUTANT GENERAL'S OFFICE
RADIO AND CABLE CENTER

7

INCOMING MESSAGE

WG
oks

AFA

UNCLASSIFIED
ROUTINE

12 Oct 49

FROM : SEC STATE (AGRICULTURE) WASH DC
TO : SCAP (USPOLAD) TOKYO JAPAN
NR : 120150 Z (BOOK MESSAGE) (CIRCULAR 11TH)

Official Oct 1 crop production in thousand bushels.

Corn 3,476,986
All wheat 1,126,226
Winter 894,874
All spring 231,352
Oats 1,321,075
Barley 234,025
Rye 18,831
Rice 89,559
Flaxseed 41,153
Sorghums for grain 129,900
Soybeans for beans 211,198
Commercial apples 132,126
Peaches 75,114
Pears 35,936

In thousand pounds.

Tobacco 2,004,214
Peanuts picked and threshed 1,804,454
Milk production Jan-Sept inclusive 92,402 million pounds
Eggs 44,137 million

Oct 1 conditions indicate 50.6 million boxes early and midseason oranges grapefruit 32.2 million boxes.

Conditions for maturing and harvesting of crops were favorable to ideal during Sept in most of the country indications now are that total outturn all crops will be nearly 1 percent larger than indicated on Sept 1 and second only to that of 1948 stocks.

(over)

18003

ROUTINE
UNCLASSIFIED

Dennis
Go

UNCLASSIFIED
ROUTINE

FROM : SEC STATE NR : 120150 Z 12 OCT 49 CONT'D

Old corn on farms Oct 1 estimated at record of 699 million bushels.

Total supply stocks on farms plus new crop placed at 3,889 million bushels the largest Oct 1 corn supply on record farm stocks.

Wheat Oct 1 totaled 460 million bushels the lowest since 1940.

Oats stocks on farms Oct 1 estimated 1,049 million bushels or 12 percent below those of a year ago.

Barley stocks on farms Oct 1 estimated 146 million bushels or 63 million bushels lower than on Oct 1 last year.

Rye stocks on farms same date placed at 8.8 million bushels or 38 percent less than year ago.

Summary and comparative data by air mail.

ACHESON

INFORMATION : COMMANDER IN CHIEF, CHIEF OF STAFF, G-2, AG,
GOVT, ECON & SCI, NAT RESOURCES, DIPLOMATIC



18003

ROUTINE
UNCLASSIFIED

TOO : 120150 Z
MCN : AUA 18/12

✓
GENERAL HEADQUARTERS, FAR EAST COMMAND
ADJUTANT GENERAL'S OFFICE
RADIO AND CABLE CENTER

SM
ghe

INCOMING MESSAGE

SM

Confidential
ROUTINE

8 Oct 49

FROM : DA WASH DC

TO : SCAP (POLAD) TOKYO JAPAN

NR : 071506 Z (RELAYS CONFIDENTIAL MSG FROM STATE DEPT DTG
060255 Z TO SCAP TOKYO), INFO : ARMY CHIEF OF STAFF
STATE SRL 487, OCT 6, 9 PM SIGNED WEBB)

REURTEL 387, Oct 4. In case USSR should question right of Chinese rep to sit for China in Allied Council our rep might state that rep of Natl Govt of China is duly accredited rep of China on Council; that USSR is only govt on Council which has withdrawn recognition from Natl Govt; that other nations represented on Council all continue to recognize Natl Govt as Govt of China; and that this govt perceives no reason to question right of duly accredited rep of China to sit. Sovs did not raise question Oct 6th meeting FEC. US rep prepared to reply as above.

NO SIG

ACTION : DIPLOMATIC

INFORMATION : COMMANDER IN CHIEF, CHIEF OF STAFF, GOVT

NOTE : Reference msg OURTEL 387 is CINCPAC msg C-52852 (Diplomatic)

16975

ROUTINE

T00 : 071506 Z
MCN : 52983.

Confidential

Handling and transmission of literal plain text of this message as correspondence of the same classification has been authorized by the War Department in accordance with the provisions of paragraphs 16-C, 18-E, 53-A, 53-D (1) (2) (3), and 60-A (1) (2) (3) (4), AR 380-5, 6 March 1946. COPY No.

16-50735-1 GPO O-795839

GENERAL HEADQUARTERS, FAR EAST COMMAND
ADJUTANT GENERAL'S OFFICE
RADIO AND CABLE CENTER

INCOMING MESSAGE

WG
jrb

Confidential
ROUTINE

APA

7 Oct 49

FROM : DA WASH DC
TO : SCAP (USPOLAD) TOKYO JAPAN
INFO : CSUSA WASH DC
NR : 070251 Z (MSG DTG 062311 Z FROM STATE DEPT TO SCAP
TOKYO) (STATE SERIAL 485, 6 PM, OCT 6, SIGNED WEBB)

Restitution of looted property (FEC 011/55).
Re Phil Amendment Para 8 of FEC 011/51, Chi member stated that he favored extension of date of distribution of secured fund, but wld vote against proposal to effect that distribution schedule shld be agreed upon among 7 countries directly concerned on grounds that such countries shld discuss matter first. After consultation with Chi rep, Phil rep stated that his proposal did not intend to discard method of distribution specified in policy decision as it stands but only to widen scope of clause so as to include other possible methods. First phrase of Phil proposal wld therefore read: "The secured fund shld finally be distributed among the countries herein specified in accordance with the percentage mentioned above, or in accordance with a schedule of shares to be agreed upon by such countries Hiatus" US member stated he cld not agree with motion as proposed at this time but cld vote on question of date alone. Comm accepted last sentence Phil proposal which read: "The secured fund shall be made available for distribution to the recipient countries not later than 1 Apr 1950," by vote of 9 in favor with 2 abstentions (Neth and USSR).

Jap reparations and level of industry (FEC 340).

16817

(over)
ROUTINE

Confidential

Confidential
ROUTINE

FROM : DA NR : 070251 Z 7 OCT 49 CONT'D

Indian member made statement favoring US position on Jap reparations. Pertinent sections fol:

"Successive estimates have tended to modify the surplus industrial capacities in Jap considered available for distribution as reparations. We appreciate the growing anxiety on the part of the US to limit accordingly reparations removals from Jap to the minimum consistent with Japs peaceful needs."

"We have a good deal of sympathy for the Amer taxpayer who has to bear the burden of the cost of balancing the deficit economy of Jap for the past 4 years, and we feel that, if the position in Jap is as critical as has been stated in the US statement, there is a good case for allowing Jap to retain higher industrial capacities which will be devoted to production for peaceful purposes."

"We have never been actuated by a desire to suppress Japs standard of living to level which will retard the attainment of the allied objectives as set forth in the Potsdam Declaration and the basic policy of the FEC. We have consistently been of the opinion that for the successful functioning of a viable Democracy in Jap the standard of living of her people shld be maintained at the level agreed upon by the FEC. We feel that the allies, in their own enlightened self-interest, shld waive the claims for reparations from Japs industrial facilities, the removal of which may jeopardize her attainment of a self-sustaining economy within a reasonable period of time and thus open up the possibility of a growing unrest and a resurgence of Japs militarism."

"We are at the same time anxious, like our colleagues around the table, that efforts shld be made to prevent Jap from reviving her war-making capacity. We are glad to note the assurance in the statement of the US Govt that in no circumstances such a possibility wld be allowed to materialize. In order to achieve this objective--that is to eliminate from Jap the possibility of a military resurgence--we wld like the Supreme Commander to exercise general supervision of all Japs industries to ensure that none is diverted to war-like purposes."

"Turning now to the economic results of the retention in Jap of her industrial capacities, we feel that steps shld be taken to ensure that Jap does not again resort to such devices as currency depreciation, exchange manipulation, excessive economic concentrations which restrict competition, or unfair

16817

ROUTINE

Confidential

GENERAL HEADQUARTERS, FAR EAST COMMAND
ADJUTANT GENERAL'S OFFICE
RADIO AND CABLE CENTER

INCOMING MESSAGE

ROUTINE

FROM : DA NR : 070251 Z 7 OCT 49 CONT'D

labor practices to produce goods which may endanger the standard of living of her neighbours. We suggest it shld be the duty of SCAP to exercise the necessary supervision in the matter."

"The US Govt has suggested that Japs external assets in the FEC countries shld be retained by these countries. This proposal is acceptable to us and I hope it wld be acceptable to other countries as well.

"However, I wld like to raise the question of the disposition of assets in neutral countries. There is, I understand, a proposal now before the Steering Comite which will permit marshaling of Japs assets in some neutral countries. I notice from the draft policy of the FEC that there is no proposal for the disposition of such assets. I wld urge the Comm to proceed to determine the nature of the ultimate disposal of such assets as early as possible. I wld venture to suggest that such assets shld be available for distribution to the countries eligible for reparations and that concrete steps shld be taken to achieve this objective."

"Finally, I understand that the question of the disposition of Jap assets in Siam has not yet been taken up in the Comm. I wld suggest we proceed to an early examination of this matter."

Level of econ life in Jap (FEC 242/32, FEC 297/10).

Substance of discussion transmitted SCAP in W-94950, Sep 29, 1949.

Under other business. USSR member reiterated request for full text of conservation program and not just titles of some measures. USSR member also referred to inquiry re fisheries inspection fleet.

NO SIG

ACTION : DIPLOMATIC

INFORMATION : COMMANDER IN CHIEF, CHIEF OF STAFF, GOVT,
ECON & SCI, CIV PROP CUST

16817

ROUTINE

TOO : 070251 Z

MCN : 52954

Confidential

Paraphrase not required. Handle as correspondence of classification carried hereon per paragraphs 51i and 60a, AR 380-5.

GENERAL HEADQUARTERS, FAR EAST COMMAND
ADJUTANT GENERAL'S OFFICE
RADIO AND CABLE CENTER

INCOMING MESSAGE

WG
ttb

SM

UNCLASSIFIED
ROUTINE

7 oct 49

FROM : ANEMBASSY SEOUL KOREA

TO : SEC STATE WASH DC

INFO : SCAP TOKYO JAPAN

NR : 070910 Z (SENT DEPT 1253 RPTD SCAP TOKYO 7TH)

At Pres Rhee's weekly press conference with Korean reporters this morning, fol exchange took place re dissolution Korean Leftist Organizations in Japan (EMBTX 1160 Sep 16):

Question: "Concerning the Japanese govts dissolution of Korean Leftist Organizations and some Rightist Organizations, you told us the other day that it was very unreasonable and that you would take some countermeasures. How is it going? And it is said all the Korean people in Japan will be registered. Thus some people are afraid that the registration system will provide an opportunity to oppose the Korean people. What do you think?"

Answer: "As for the registration, the govt ordered all the diplomatic agencies in the world not only in Japan to have all the Korean people registered in order to know the number of people and to protect them.

As for the Japanese oppression of the Koreans in Japan, I have never received any further news, and I think the problem is being settled smoothly."

MUCCIO

16938

ROUTINE
UNCLASSIFIED

UNCLASSIFIED
ROUTINE

FROM : AMEMBASSY SEOUL NR : 070910 Z 7 OCT 49 CONTINUED

INFORMATION : COMMANDER IN CHIEF, CHIEF OF STAFF, G-1, G-2,
G-3, G-4, AG, GOVT, DIPLOMATIC, JSPOG

16938

ROUTINE
UNCLASSIFIED

TOO : 070910 Z
MCN : AUG 97/07

GENERAL HEADQUARTERS, FAR EAST COMMAND
ADJUTANT GENERAL'S OFFICE
RADIO AND CABLE CENTER

AM
SM
jt

INCOMING MESSAGE

UNCLASSIFIED
ROUTINE

7 Oct 49

FROM : CG FIFTH ARMY (BLAINE HOOVER) CHICAGO ILL
TO : SCAP (BRIG GEN WHITNEY GOV SECT) TOKYO JAPAN
NR : 062021 Z

Arrived in Chicago 1045 hours 1 Oct scheduled for admission hospital 9 Oct. Hope to send encouraging reports soon. Will keep you informed. Greetings to you and staff.

NO SIG

16681

ROUTINE
UNCLASSIFIED

TOO : 062021 Z
MCN : AUD 11/07

GENERAL HEADQUARTERS, FAR EAST COMMAND
ADJUTANT GENERAL'S OFFICE
RADIO AND CABLE CENTER

WG
ewj

INCOMING MESSAGE

Action transferred to RMC - Sect 4
AFA

(WA)

Secret
ROUTINE

6 Oct 49

FROM : CG RYCOM OKINAWA
TO : CINCPAC (G-2) TOKYO JAPAN
NR : Y 40604

Request clarification of status of Okinawan members of Imperial Rule Assistance Association (Yokusan Seiji Kai). Have members been purged from holding govt position in Japan, and if so, is purge applicable to Okinawan members now in govt positions here. Of particular interest is Tobaru Mota Aka Momohara Shigeta, age 55, grad of Kyoto Univ Law Dept, who is reported to have been recommended to the Diet by Imperial Rule Assistance Assn latter part of war. Tobaru alias Momohara is chief of Water Transp Div, Okinawa Civil Administration, an appointive position.

Other OCA officials formerly prominent members of Assistance Assn are:

Shikiya Koshin, Governor;
Taira Tatsuo, President Central Okinawa Agricultural Assn; and
Toma Jugo, Director of Economics Dept.

REVISED : (7 Oct 49)

NO SIG

ACTION : GOVT

INFORMATION : COMMANDER IN CHIEF, CHIEF OF STAFF, G-2, AG, RYUKYUS MG

16562

ROUTINE

Secret

TOO : 060015 Z
MCN : 52915

Handling and transmission of literal plain text of this message as correspondence of the same classification has been authorized by the War Department in accordance with the provisions of paragraphs 16-C, 18-E, 53-A, 53-D (1) (2) (3), and 60-A (1) (2) (3) (4), AR 380-5, 6 March 1946.

COPY No.

26

✓
GENERAL HEADQUARTERS, FAR EAST COMMAND
ADJUTANT GENERAL'S OFFICE
RADIO AND CABLE CENTER

1325

INCOMING MESSAGE

LRS
rjs

SM

3D CORRECTED COPY
UNCLASSIFIED
ROUTINE

5 Oct 49

FROM : SEC STATE WASH DC
TO : SCAP TOKYO JAPAN
INFO : DA WASH DC
NR : 041554 Z (JIDDA UNN 4TH) BOOK MESSAGE

URTEL 031027 7 3d in order approach SAG to obtain requisite entry visa For Garey. Embassy must have date on exact nature of his business in Saudi Arabia. Unable take action until this submitted as SAG invariably requires this info Hill.

WEBB

REVISED (6 Oct 49)

ACTION : GOVT

INFORMATION : COMMANDER IN CHIEF, CHIEF OF STAFF, AG, DIPLOMATIC

ADDED DIST: G-1 (5 Oct 49)

NOTE: Corrected copy read AG-OR 051330 I.

NOTE: 2d corrected copy read AG-OR 051805 I.

15963

ROUTINE
UNCLASSIFIED

TOO : 041554 Z
MCN : AUB 107/04

✓
GENERAL HEADQUARTERS, FAR EAST COMMAND
ADJUTANT GENERAL'S OFFICE
RADIO AND CABLE CENTER

EFF
hrb

Confidential
INCOMING MESSAGE

EFF

ROUTINE

30 Sept 49

FROM : DA WASHINGTON DC
TO : SCAP (USPOLAD) TOKYO JAPAN
INFO : CSUSA WASHINGTON DC
NR : 300456 Z (RELAYS MSG DTG 300112 Z FROM DEPT OF STATE)
(STATE SERIAL 472 SEPT 29, 8 PM SIGNED WEBB)

FEC steering comite meeting, Sept 20--Fishing and Aquatic Industries paper amended and forwarded to Comm as FEC 271/25. US, China and USSR oppose. US proposal accepted for adding statement that "nothing in this paper shall be interpreted to apply to Japanese whaling activities." US proposal for amending Para 2 B as indicated in SC 271/24 not accepted. Instead final sentence in Para 2 B was deleted by the steering comite fishing and aquatic industries in Jap (FEC 271/25) no action.

Gen discussion.

Chi Del stated dissatisfaction with western boundary of Jap fishing area as proposed in paper.

Sov Del reintroduced proposed amendment that Para 2 B read:

"No extension of Jap fishing or other commercial aquatic activities beyond the foregoing area should be permitted without prior authorization by the FEC" also inquired about press report in New Yrk Times 22 Sep that SCAP had expanded the Jap fishing Area.

Austral Rep stated that Para 5 could be interpreted that Jap need not apply conservation measures to whaling industry.

Phil Del said that Para 2 B should be amended to make SCAP obtain prior authorization from countries indicating concern for the particular area level of econ life in Jap.

Sov Rep introduced fol motion:

"The FEC decides as a matter of policy that the provisions of Para 9 B of the FEC. Policy decision inner 'reduction of Jap industrial war potential' (FEC-084 21) regarding productive

(over)

14887

ROUTINE

Paraphrase not required. Handle as correspondence of classification carried hereon per paragraphs 51i and 60a, AR-380-5

Confidential
ROUTINE

FROM : DA NR : 300456 Z 30 SEPT 49 CONT'D

capacity maximum in war-supporting industries are hereby extended until the adoption by the FEC of a decision on the level of econ life in Jap."

US member issued statement of objection to such amendment referring to points made in May 12 reparations statement Sov inquiry concerning elimination of excessive concentration of econ power in Jap

Sov Rep presented the fol inquiry:

"On Aug 3, 49, SCAP Hqs issued a statement to the effect that the dissolution of large industrial corporations and the elimination of excessive concentration of econ power in Jap had, allegedly, now been completed."

"In this connection the Sov Del considers it necessary that the Supreme Commander provide the FEC with info regarding the results of the program for the dissolution of large industrial corporations and the elimination of excessive concentration of econ power in Jap.

"It is desirable that the fol questions be clarified in the info:

"1. What large industrial and banking corporations (Zaibatsu) have been dissolved?

"2. The aggregate capital of the dissolved companies placed at the disposal of the holding company liquidation commn?

"3. The amount of shares already distributed and the principle upon which this distribution was based?

"4. The amount and value of shares of the dissolved companies, acquired by foreigners and foreign companies; and specifically by which foreign companies?

"5. Which foreign firms have already drawn up business contracts with Jap companies?

"6. How many large industrial and banking companies, included in the category of 'restricted' companies, were subjected to deconcentration in each branch of industry and the names of these companies?

"7. The result of the purge in econ and financial organizations provided for in Part 4 (IV) Para 2 A, of the policy decision of the FEC-014 9 'basic post-surrender policy for Jap?

"Besides that, the Sov Del deems it desirable that the members of the FEC be provided with the full text of the report of the deconcentration review board submitted to the Supreme Commander according to the 'New York Times' report of Aug 4, 49.

Pls advise if these telegraphic summaries of FEC meetings may be discontinued without great inconvenience. Minutes of meetings can be sent by air pouch fol day. Considering fast courier service and expense discontinuation suggested.

14887

ROUTINE
Confidential

NO SIG

GENERAL HEADQUARTERS, FAR EAST COMMAND
ADJUTANT-GENERAL'S OFFICE
RADIO AND CABLE CENTER

INCOMING MESSAGE

Confidential
ROUTINE

FROM : DA ----- NR : 300456 Z ----- 30 SEP 49 ----- CONT'D

ACTION : DIPLOMATIC

INFORMATION : COMMANDER IN CHIEF, CHIEF OF STAFF, GOVT,
ECON & SCI, CIV PROP CUST

14887

2
Confidential
ROUTINE

T00 : 300455 Z
MCN : 52704

Paraphrase not required. Handle as correspondence of classification carried hereon
per paragraphs 51i and 60a, AR 380-5.

✓
GENERAL HEADQUARTERS, FAR EAST COMMAND
ADJUTANT GENERAL'S OFFICE
RADIO AND CABLE CENTER

EFF
DTW

INCOMING MESSAGE

UNCLASSIFIED
PRIORITY

EFF

30 Sep 49

FROM : GUMPAC HARMON FLD GUAM
TO : CINCPAC TOKYO JAPAN
NR : GUMPAC 1307

REURAD ZX 24748, this msg about arrival of 2 Ryukyuan students
Mr Tomoaki Iye and Mr Wakatsu Oshiro received this sta at 300545 Z
whereas Messgrs Iye and Oshiro arrive at 292230 Z. See GUMPAC 1306.

MCCLUSKEY

ACTION : RYUKYUS MG

INFORMATION : COMMANDER IN CHIEF, CHIEF OF STAFF, G-1, AG,
TRANSP, CIV COMM, GOVT, PUBLIC H & W, ECON & SCI,
CIV I & E, LEGAL, NAT RESOURCES, DIPLOMATIC

14876

PRIORITY
UNCLASSIFIED

TOO : 300600 Z
MCN : AUC 59/30

GENERAL HEADQUARTERS, FAR EAST COMMAND
ADJUTANT GENERAL'S OFFICE
RADIO AND CABLE CENTER

INCOMING MESSAGE

JA
trm

UNCLASSIFIED
PRIORITY

JA

30 Sep 49

FROM : GUMPAC HARMON FLD GUAM
TO : HICPAC HICKAM AFB TH
INFO : CINCPAC TOKYO JAPAN, FAIRPAC FAIRFIELD CALIF
NR : GUMPAC 1306

The following Ryukuan Nationals students, Mr Tomoaki Iye and Mr Wakatsu Oshiro, arrived Guam unannounced on Trip 248-29 at 292230 Z and are scheduled to depart for Hickam on Trip 238-30 at 301600 Z.

MC CLUSKEY

INFORMATION : COMMANDER IN CHIEF, CHIEF OF STAFF, G-1, AG, TRANSP, CIV COMM, GOVT, PUBLIC H & W, ECON & SCI, CIV I & E, LEGAL, NAT RESOURCES, DIPLOMATIC

14774

PRIORITY
UNCLASSIFIED

TOO : 300050 Z
MCN : AUC 21/30

cxo
Rizz
A

GENERAL HEADQUARTERS, FAR EAST COMM.
ADJUTANT GENERAL'S OFFICE
RADIO AND CABLE CENTER

JA
trm

INCOMING MESSAGE

JA

UNCLASSIFIED
PRIORITY

28 Sep 49

FROM : CG RYCOM OKINAWA
TO : CINCPAC TOKYO JAPAN
NR : R 03930

Re WX 91567 following info submitted on 2 students entering United States.

First student Tomoaki Iye born 29 Jan 1925, place born Tonokura Kushuri Shi Okinawa, ETA US 2 Oct, port entry San Francisco nationality Japanese, home address 61 Tonokura Ku, Shuri Shi, Okinawa, residence in US Wittenberg College Springfield Ohio, type of visa will be student visa, anticipated stay is from 1 to 2 years, marital status single.

Second student Wakatsu Oshiro, born 21 Nov 1926 place born Itoman Cho Okinawa, ETA US 2 Oct, port entry San Francisco, nationality Japanese, home address 3 Ku Itoman Cho Okinawa, residence in US is Ohio (no other info available), type of visa will be student visa, anticipated stay is from 1 to 2 years, marital status single.

ACTION : 0-1

NO SIG

INFORMATION : COMMANDER IN CHIEF, CHIEF OF STAFF, 0-2,
AG, TRANSP, CIV COMM, GOVT, HYUNYUS NG,
PUBLIC E & W, ECON & SCI, CIV I & E, LEGAL,
NAT RESOURCES, DIPLOMATIC

Gen Whitney

EP
14054
Rizzo
Haugl

PRIORITY
UNCLASSIFIED

TOO : 280031 Z
MCN : AUC 09/28

✓
GENERAL HEADQUARTERS, FAR EAST COMMAND
ADJUTANT GENERAL'S OFFICE
RADIO AND CABLE CENTER

SM
tlh

INCOMING MESSAGE

UNCLASSIFIED
PRIORITY

G00

28 Sep 49

FROM : CG RYCOM OKINAWA

TO : CINCPAC TOKYO JAPAN (PASS TO RYUKYUS MILITARY GOVERNMENT SECT)

NR : R 03845

URMSG Z 24269 dated 25 September 49, it is believed that
Wakatsuki Oshiro will depart Okinawa 27 September at 1800 hours with
Tomoaki Iye. Will arrive Tachikawa Flight Number 301.

NO SIG

ACTION : G-1

INFORMATION : COMMANDER IN CHIEF, CHIEF OF STAFF, AG, TRANSP,
CIV COMM, GOVT, RYUKYUS MG, PUBLIC H & W, ECON & SCI,
CIV I & E, LEGAL, NAT RESOURCES, DIPLOMATIC

13753

PRIORITY
UNCLASSIFIED

TOO : 270207 Z
MCN : AUD 36/27

Gene Whaley
axo
Rizzo
P

V
GENERAL HEADQUARTERS, FAR EAST COMMA
ADJUTANT GENERAL'S OFFICE
RADIO AND CABLE CENTER

Gen. Whitney
JA
trm

INCOMING MESSAGE

000

UNCLASSIFIED
ROUTINE

26 sep 49

FROM : CG RYCOM OKINAWA
TO : CINCPAC TOKYO JAPAN
NR : R 03776

Re DA-WCL 41208 dtd 14 sept 49 ref Para 7. For Project 456 based upon probability of \$50,000 request \$32,000 for students and \$18,000 for national leaders. Situation concerning national leaders not comparable to Japan. Therefore greater sum reqd for students. Not practical to request funds by quarters for it cannot be determined here in which quarters students and leaders will be permitted ZI travel. Request full amount be allocated in first quarter for obligation at subsequent dates as transportation becomes available. Ref Para 3 no valid basis of info here upon which to determine travel expenses, visa fees, and so forth. In that no students from here have been allowed study in United States. Request Dept of the Army or Civilian Info and Education SCAP furnish figures based upon experiences with students from Japan, Korea, and so forth.

NO SIG

ACTION : CIV I & E

INFORMATION : COMMANDER IN CHIEF, CHIEF OF STAFF, G-1, G-3,
G-4, AG, FISCAL, GOVT, RYUKYUS MG, GEN PROC,
COMPTROLLER, GARIOA

13402

ROUTINE
UNCLASSIFIED

TOO : 260137 Z
MCN : AUB 28/26

✓
GENERAL HEADQUARTERS, FAR EAST COMMAND
ADJUTANT GENERAL'S OFFICE
RADIO AND CABLE CENTER

INCOMING MESSAGE

JA
egw

Confidential
ROUTINE

TER

24 Sep 49

FROM : DA WASH DC
TO : SCAP (USPOLAD) TOKYO JAPAN
INFO : CSUSA WASH DC
NR : 232328 Z (MSG FROM STATE DEPT DTG 231833 Z) (STATE
SERIAL 462 SIGNED WEBB DATED SEP 23 1 PM)

Subj is 16th FEC Mtg, 15 Sep.
Release of earmarked gold in Jap.
W 94334 Sep 15 reported US statement and result of voting.
NZ, Chi, Phil, Indian, Sov and Austral reps made various
statements calling for withholding issuance of US directive
until matter could be considered and decided by FEC. Austral
motion to this effect defeated by negative vote of US.
Level of Economic life in Jap.
Sov rep noted that provision of Para 9 of FEC 084/21
on maximum productive capacity in war supporting industries
expires on 1 Oct 49 and proposed that comm adopt a new policy
decision or extend expiring date. Action postponed.
Restitution of looted property.
Phil rep noted that under Para 8 of FEC 011/51, 1 Oct
49 is the date for distribution of the proceeds from secured
funds of unidentified looted property. He proposed extension
date until 1 Jan 1950. AD HOC committee appointed to
prepare recommendation to committee.
Sov quarter re fishing area inspection.
This data furnished in W 94426, 17 Sep.

ACTION : DIPLOMATIC

NO SIG

INFORMATION : COMMANDER IN CHIEF, CHIEF OF STAFF, CIV PROP
CUST

ADDED DIST: GOVT, ECON & SCI, NAT RESOURCES (24 Sep 49)

13126

ROUTINE

TOO : 232328 Z
MCN : 52467

Confidential

Handing and transmission of literal plain text of this message as correspond-
ence of the same classification has been authorized by the War Department
in accordance with the provisions of paragraphs 16-C, 18-E, 53-A, 53-D (1)
(2) (3), and 60-A (1) (2) (3) (4), AR 380-5, 6 March 1946. COPY No.

16-50735-1 GPO O-795839

W40
Rizz
Hauge
F

GENERAL HEADQUARTERS, FAR EAST COMMA
ADJUTANT GENERAL'S OFFICE
RADIO AND CABLE CENTER

INCOMING MESSAGE

EMS
ewj

TBB

Restricted
PRIORITY

24 Sep 49

FROM : DA WASH DC
TO : SCAP (USPOLAD) TOKYO JAPAN
INFO : CSUSA WASH DC
NR : 231929 Z ((RELAYS MSG DTG 231604 Z FROM DEPT OF STATE)
(PRIORITY MSG SEP 23, 11 AM SIGNED WEBB))

Senator H Alexander Smith (Rep, NJ). Member Foreign Relations and Labor and Welfare Committees, departed 16 Sep USAT Gen Darby for Japan accompanied by wife for trip of several weeks. ETA Yokohama 25 Sep. Senator has been in direct communication General MacArthur re trip. Understood plans considerable stay Tokyo. MacArthur to arrange transp other FE destinations. Senator is concerned about China and FE policy and wishes consult MacArthur and make personal study FE situation on ground. Senator has been uniformly helpful Dept legislative program. Please accord him all appropriate courtesies and assistance.

Don't include
ACTION : SECTY GEN STAFF

NO SIG

Don't include
INFORMATION : COMMANDER IN CHIEF, CHIEF OF STAFF, G-1, AG, DIPLOMATIC

Don't include
ADDED DIST : VISITORS BUREAU, GOVT (24 Sep 49)

13037

PRIORITY

TOO : 231929 Z
MCN : 52453

Restricted

Handling and transmission of literal plain text of this message as correspondence of the same classification has been authorized by the War Department in accordance with the provisions of paragraphs 16-C, 18-E, 53-A, 53-D (1) (2) (3), and 60-A (1) (2) (3) (4), AR 380-5, 6 March 1946. COPY No.

16-50735-1 GPO O-795839

✓
GENERAL HEADQUARTERS, FAR EAST COMMAND
ADJUTANT GENERAL'S OFFICE
RADIO AND CABLE CENTER

EMS
ewj

INCOMING MESSAGE

EMS

UNCLASSIFIED
PRIORITY

24 Sep 49

FROM : CINCEUR HIEDELBURG GERMANY
TO : SCAP TOKYO JAPAN
INFO : DA (DIR CIV PERS DIV) WASH DC, CO FRANKFURT MP (CPO)
FRANKFURT GERMANY
NR : SC 18215 (ECGPA)

REURADS Z 23573, 19 Sep 49 and Z 23834, 21 Sep 49. Mr Robert Barnett is presently assigned as Personnel Adviser to the Director of Administration (Mr Glenn G Wolfe) for HICOG (State Dept), Frankfurt, Germany. Advice from Mr Barnett indicates no position available with HICOG. This hq has no knowledge of Mr Steward and is unable to take advantage of this opportunity for his services.

HANDY

ACTION : CIV PERS
INFORMATION : G-1, AG, GOVT

13027

PRIORITY
UNCLASSIFIED

TOO : 231605 Z
MCN : AUB 135/23

✓
GENERAL HEADQUARTERS, FAR EAST COM AND
ADJUTANT GENERAL'S OFFICE
RADIO AND CABLE CENTER

EFF
jw

INCOMING MESSAGE

GGG

UNCLASSIFIED
PRIORITY

23 Sep 49

FROM : GUMPAC HARMON FIELD GUAM
TO : HICPAC HICKAM AFB TH
INFO : SCAP TOKYO JAPAN, FAIRPAC FAIRFIELD SUISUN AFB CALIF,
DA WASH DC
NR : GUMPAC 1289

Re GUMPAC 1287. Due to high priority personnel and cargo, departure of Mr Akira Watanabe and Mr Morihiko Okatsu postponed until 231600 Z, Trip 238/23.

MCCLUSKEY

INFORMATION : COMMANDER IN CHIEF, CHIEF OF STAFF, G-1, AG,
TRANSP, CIV COMM, GOVT, PUBLIC H & W, ECON &
SCI, CIV. I & E, LEGAL, NAT. RESOURCES, DIPLOMATIC

12756

PRIORITY
UNCLASSIFIED

TOO : 230006 Z
MCN : AUB 36/23

GENERAL HEADQUARTERS, FAR EAST COMMAND
ADJUTANT GENERAL'S OFFICE
RADIO AND CABLE CENTER

1310
JA
ghc

INCOMING MESSAGE

TER

UNCLASSIFIED
PRIORITY

23 Sep 49

FROM : GUMPAC HARMON FIELD GUAM
TO : HICPAC HICKAM AFB TH
INFO : SCAP TOKYO JAPAN, FAIRPAC SUISEI AB FAIRFIELD CALIF,
DA WASH DC
NR : GUMPAC 1287

Following Japanese nationals, interchange of persons students, Akira Watanabe and Morihiko Okatsu, arrived Guam from Tokyo on MATS Flight 248-22 and will depart for Hickam on MATS Flight 236-23 Acft 6499 at 230600 Z. Registration at University of Kentucky closes 28 Sep. Please expedite their travel.

MCCLUSKEY

INFORMATION : COMMANDER IN CHIEF, CHIEF OF STAFF, G-1, AG, TRANSP, CIV COMM, GOVT, PUBLIC H & W, ECON & SCI, CIV I & E, LEGAL, NAT RESOURCES, DIPLOMATIC

12678

PRIORITY
UNCLASSIFIED

TOO : 222145 Z
MCN : AUC 05/23

440
Rizzo
Lang

✓
GENERAL HEADQUARTERS, FAR EAST COMMAND
ADJUTANT GENERAL'S OFFICE
RADIO AND CABLE CENTER

SM
gdc

INCOMING MESSAGE 000

Restricted
ROUTINE

22 Sept 49

FROM : DA WASH DC
TO : SCAP (USPOLAD) TOKYO JAPAN
INFO : CSUSA WASH DC
NR : 220322 Z (RELAYS MSG DTG 220025 Z FROM STATE DEPT)
(STATE SERIAL 458 SEP 21, 7 PM SIGNED WEBB)

REDEPTEL 432, Sept 6, URTEL 362, Sept 20.
USDEL Paris UNESCO conference reports executive board
decided invite SCAP official observer. Vote unanimous with
exception Polish abstention and no difficulty predicted in
obtaining formal conference endorsement this executive board
action.

NO SIG

ACTION : DIPLOMATIC

INFORMATION : COMMANDER IN CHIEF, CHIEF OF STAFF, G-1, G-2,
AG, GOVT, ECON & SCI, CIV I & E, LEGAL

ROUTINE

TOO : 220322 Z
MCN : 52367

Copy 12456
Ryze
Stange
Paraphrase not required. Handle as correspondence of classification carried hereon
per paragraphs 51i and 60a, AR 380-5.

GENERAL HEADQUARTERS, FAR EAST COMMAND
ADJUTANT GENERAL'S OFFICE
RADIO AND CABLE CENTER

INCOMING MESSAGE

PTS
via

TER

Confidential
ROUTINE

20 Sep 49

FROM : DA WASH DC
TO : SCAP TOKYO JAPAN
NR : 191911 Z (RELAYS MSG DTG 191214 Z FROM STATE) (RELAY FROM
CAIRO SENT DEPT 864 SEP 177 PM SIGNED PATTERSON RPTD
SCAP TOKYO AS UNN MSG)

Important Egyptian salt producers committed Japan some
50,000 tons. Wish ascertain possibility extension dollar
payment this commodity till end year when they hope complete.
View import status suppliers recommend favorable consideration
order foster American Middle East good will.

NO SIG

ACTION : ECON & SCI

INFORMATION : COMMANDER IN CHIEF, CHIEF OF STAFF, G-4, GOVT,
PUBLIC H & W, GEN PROC, NAT RESOURCES, GARIOA

11547

ROUTINE

TOO : 191911 Z
MCN : 52249

Confidential

Paraphrase not required. Handle as correspondence of classification carried hereon
per paragraphs 51i and 60a, AR 380-5.

GENERAL HEADQUARTERS, FAR EAST COMMAND
ADJUTANT GENERAL'S OFFICE
RADIO AND CABLE CENTER

7

✓
misc

EFF
gdc

INCOMING MESSAGE

Secret
ROUTINE

20 Sept 49

FROM : DA WASH DC
TO : CINCFE (USPOLAD) TOKYO JAPAN
INFO : CSUSA WASH DC
NR : 250350 Z (RELAYS MSG DTG 192348 Z FROM STATE DEPT) (SENT PEIPING 646 REPEATED TOKYO 45- SEP 19 6 PM SIGNED ACHESON)

Your 1380 Aug 18 and 1499 Sept 8 relayed to SCAP.

Suggest you advise San Yeng conduct further negots this matter direct through its Tokyo Rep, being careful point out your inability advise re possibility successful outcome and emphasize fact ultimate decision must be made by Jap suppliers and SCAP. It would be inappropriate for SCAP to designate specific firms with which San Yang should deal and companys rep Tokyo should be in position make own decision. Any fgn businessmen in Japan may approach any firm without special permission, while you may continue offer services as means communication for SCAP and company to clarify particular points you should require company use normal public facilities in communicating with its Tokyo agent.

NO SIG

ACTION : DIPLOMATIC

INFORMATION : COMMANDER IN CHIEF, CHIEF OF STAFF, G-2, GOVT,
ECON & SCI

[Handwritten signatures and initials]

11713

ROUTINE

TOO : 200350 Z
MCN : 52268

Paraphrase not required. Handle as correspondence of classification carried hereon per paragraphs 51i and 60a, AR 380-5.

GENERAL HEADQUARTERS, FAR EAST COMMAND
ADJUTANT GENERAL'S OFFICE
RADIO AND CABLE CENTER

Spencer

INCOMING MESSAGE

SM
rdm

SM

UNCLASSIFIED
ROUTINE

19 Sept 49

FROM : AMEMBASSY SEOUL KOREA
TO : SEC STATE WASH DC
INFO : SCAP TOKYO JAPAN
NR : 190650 Z (SENT DEPT 1164) (DEPT PASS TO ECA)

Following text statement issued today by Pres Rhee in form press release:

"The establishment of more satisfactory commercial relations between Korea and Japan is urgent. An economic agreement between the 2 countries may be negotiated without waiting for the conclusion of a peace treaty between Japan and the Allied Powers."

Since the defeat of Japan and the liberation of Korea, vast economical damage has been done to both countries through inability to halt illicit trade. Recently a temporary measure was arranged with Japan through SCAP to open the door for commerce. The results of this arrangement have not been satisfactory."

"It must be recognized that although a final peace settlement between Japan and her war time adversaries has not been scheduled, the need for mutual cooperation on an economical level between Korea and Japan grows day by day. While the hereditary antagonism between the Koreans and the Japanese following the Hideyoshi invasion of 350 years ago and the bitter experience of the last 40 years suffered at the hands of the Japanese militarists may require a long time for the Korean people to forget, "Modus Vivendi" agreement in opening trade relations on a basis of mutual economic welfare is imperative."

We are assured that Japan is not to be permitted to become again an aggressive military power. We are assured that

11417

-over-
ROUTINE
UNCLASSIFIED

UNCLASSIFIED
ROUTINE

FROM : AMEMBASSY SEOUL KOREA NR : 190650 Z (SENT DEPT 1164)
(DEPT PASS TO ECA) --- 19 SEPT 49 --- CONT'D ---

Japans neighbors have no reason either to fear or to suspect Japanese aggression."

The Korea Govt is ready to negotiate a workable trade agreement with the Japanese Govt through SCAP. The Korean Govt stands ready to designate representatives to a conference along these lines. An agreement of this kind must be reached because Japan and Korea are, and will continue to be, neighbor countries."

"Until the final peace settlement establishes Japans position in the Asiatic community, the economic welfare of Japan and Korea requires a workable agreement between them."

MUCCIO

INFORMATION : COMMANDER IN CHIEF, CHIEF OF STAFF, G-1, G-2, G-3,
G-4, AG, ECON & SCI, DIPLOMATIC

ADDED DIST : GOVT (20 SEP 49)



11417

ROUTINE
UNCLASSIFIED

-2-

TOO : 190650 Z
MCN : AUD 19/19

GENERAL HEADQUARTERS, FAR EAST COMMAND
ADJUTANT GENERAL'S OFFICE
RADIO AND CABLE CENTER

EFF
ac

mic
INCOMING MESSAGE

PTS

Restricted
ROUTINE

17 Sep 49

FROM : AMEMB AT SEOUL KOREA
TO : SCAP TOKYO JAPAN
NR : 162005 Z (SENT DEPT 1162)

Referring Pres Rhee's reply to last question quoted EMBTEL 1160 Sep 16, following closing sentence was deleted: "When SCAP does not, or cannot do anything about the matter, then we will send our Army or police to Japan to solve the problem for ourselves." Following termination of press conference director Korean PIO immediately took steps apparently with president's concurrence preclude publication in local press of sentence quoted above. He also made personal appeal to United Press Correspondent the only American reporter present to suppress president's remark. Embassy understands United Press's reporter sent story to Tokyo by phone to be held unless story breaks. So far as Embassy knows, Rhee remarks has not gained public currency.

MECCIO

ACTION : SECY GEN STAFF

INFORMATION : COMMANDER IN CHIEF, CHIEF OF STAFF

10962

ROUTINE

Restricted

TOO : 162005 Z
MCN : 52168

Paraphrase not required. Handle as correspondence of classification carried hereon per paragraphs 51i and 60a, AR 380-5.

1
2

GENERAL HEADQUARTERS, FAR EAST COMMAND
ADJUTANT GENERAL'S OFFICE
RADIO AND CABLE CENTER

Deputy

JA
egw

INCOMING MESSAGE

WG

Restricted
ROUTINE

17 Sep 49

1535 hours

FROM : DA WASH DC
TO : SCAP (POLAD) TOKYO JAPAN
INFO : CSUSA WASH DC
NR : 170021 Z (RELAYS MSG FROM DEPT STATE DTG 162122 Z)
(STATE SERIAL 445 SIGNED ACHESON DTD SEP 16 4 PM)

Re DEPTTEL 435, Sep 8. Pls advise if Bunce or SCAP group
will attend UNESCO Conference.

NO SIG

ACTION : DIPLOMATIC

INFORMATION : COMMANDER IN CHIEF, CHIEF OF STAFF, G-1, G-2,
AG, GOVT, ECON & SCI, CIV I & E, LEGAL

11038

ROUTINE
Restricted

TOO : 170021 Z
MCN : 52177

Paraphrase not required. Handle as correspondence of classification carried hereon
per paragraphs 51i and 60a, AR 380-5.

✓
GENERAL HEADQUARTERS, FAR EAST COMMAND AND
ADJUTANT GENERAL'S OFFICE
RADIO AND CABLE CENTER

Er

LRS
DJF

INCOMING MESSAGE

LRS

UNCLASSIFIED
ROUTINE

17 Sep 49

FROM : AMEMBASSY SEOUL KOREA
TO : SEC STATE WASH DC
INFO : SCAP TOKYO JAPAN
NR : 160845 Z (SENT DEPT 1160 RPTD SCAP 16TH)

At President's weekly press conference with Korean reporters of dissolution by Japanese authorities of certain Korean organization in Japan. There follow questions directed by reporters to President, together with his answers as translated:

Question: The Japanese Govt has broken up some Korea organizations in Japan and confiscated their properties. What have you to say about this?

Answer: If the Japanese want to confiscate properties of the Korea Communists in Japan, they should also do the same to the Japanese Communists.

Question: They dissolved and confiscated not only Korean Communistic organizations, but also some local branches of the rightist organization too. As an excuse for this action, the Japanese say the Koreans there are violating the Potsdam Agreement. The confiscated properties already are being sold at auction, it is said. What are your comments?

Answer: It is unreasonable to treat Korean Communists in such a manner while they treat the Japanese Communists favorably. Although there are some Americans who like Japan, that is no reason why Japan can mistreat people from foreign countries as it did in the period prior to the war.

Question: Concerning this incident, some people blame Ambassador Chung Hang Bun because of his inability to restrain the Japanese Govt from executing this unreasonable deed. What do you think?

10898

(over)
ROUTINE
UNCLASSIFIED

✓
GENERAL HEADQUARTERS, FAR EAST COMMAND
ADJUTANT GENERAL'S OFFICE
RADIO AND CABLE CENTER

GGG
ehc

INCOMING MESSAGE

Confidential
ROUTINE

GGG

11 Sep 49

FROM : DA WASH DC
TO : SCAP (USPOLAD) TOKYO JAPAN
INFO : CSUSA WASH DC
NR : 102156 Z (RELAYS MSG DTG 101848 Z FROM STATE DEPT)
(STATE SERIAL 440 SEP 10, 2 PM SIGNED ACHESON)

Subj is Summary Steering Committee Mtg Sep 6/1949 Fishing and Aquatic Industries in Jap (SC 271/24).

No discussion on US amendment to add fol as new para 5 "nothing in this paper shall be interpreted to apply to Jap whaling activities". Re US amendment to delete all para 2 B after "FEC" in fifth line and replace with fol "asserts direct concern in respect to fishing or other commercial aquatic activities, SCAP will attempt to secure consent of such country to an agreement reasonably calculated to benefit the Jap economy and to protect the legitimate interests of such country," other members expressed no views and no one appeared opposed to vote being taken except Chi who requested postponement until fol week.

Canada member informally informed US member after mtg re first US amendment that it wld be helpful if US shld in some way make it clear that adoption of amendment wld not authorize Jap to disregard internatl regulations, as to conservation, re whaling. He also indicated informally that he wld vote for second US amendment if US wld inform SCAP of negotiation re convention for fisheries of North Pacific Ocean, in accordance with which Jap wld be barred from fishing within 150 miles of coasts of either US or Canada, and that there by understanding that SCAP, pending consummation of convention, shld not grant permission to Jap to fish within 150 miles of Canada coast.

UK member indicated informally that he had no instrs re second US amendment.

(over)
ROUTINE

09010

Paraphrase not required. Handle as correspondence of classification carried hereon per paragraphs 51i and 60a, AR 300-5.

Confidential
ROUTINE

FROM : DA NR : 102156 Z (RELAYS MSG DTG 101848 Z FROM STATE DEPT)
(STATE SERIAL 440 SEP 10, 2 PM) 11 Sep 49 CONT'D

Jap assets in neutral countries (SC 295/6) no discussion.

NO SIG



ACTION : DIPLOMATIC

INFORMATION : COMMANDER IN CHIEF, CHIEF OF STAFF, GOVT



09010

ROUTINE
Confidential

T00 : 102156 Z
MCN : 51976

✓
GENERAL HEADQUARTERS, FAR EAST COMMAND
ADJUTANT GENERAL'S OFFICE
RADIO AND CABLE CENTER

SM
trm

INCOMING MESSAGE

UNCLASSIFIED
ROUTINE

SM

11 Sep 49

FROM : SEC STATE (AGRICULTURE) WASH DC
TO : SCAP (USPOLAD) TOKYO JAPAN
NR : 101323 Z (CIRCULAR 9TH) (BOOK MESSAGE)

Official Sept 1 crop production thousand bushels corn 3,525,741 all wheat 1,129,081 winter 894,874 all spring 234,207 oats 1,314,258 barley 233,395, rye 18,831, rice 90,139, flaxseed 41,569, sorghums for grain 118,754, soy beans for beans 204,207, commercial apples 129,423, peaches 75,729, pears 35,505. No estimate made of sugar yields of beets and cane in thousand pounds. Tobacco 1,994,183, peanuts picked and threshed 1,792,100. Milk production Jan Aug inclusive 83,012 million pounds eggs 40,561 million Sept 1. Condition oranges and tangerines 65% cranefruit 87% and lemons 62%.

Corn prospects declined slightly result deterioration due hot dry weather northwestern part of corn belt but crop estimated only 3.5% less than 1948 record corn crop generally 1 to 2 weeks more advanced than usual. This date weather mostly favorable for harvesting grains and hay all wheat crop. Estimate slightly under Aug 1 estimate because of continued deterioration in spring wheat area. Harvesting spring wheat nearly completed other crops nearly all harvested. Show but slight change from Aug 1. Estimate plowing and preparation of fields for fall sown crops well advanced and some seeding done through Great Plains in good seedbeds summary and comparative date by air mail.

ACHESON

08989

ROUTINE
UNCLASSIFIED

UNCLASSIFIED
ROUTINE

FROM : SEC STATE NR: 101323 Z 11 SEP 49 CONTINUED



REVISED (12 Sep 49)

INFORMATION : COMMANDER IN CHIEF, CHIEF OF STAFF, AG,
ECON & SCI, NAT RESOURCES

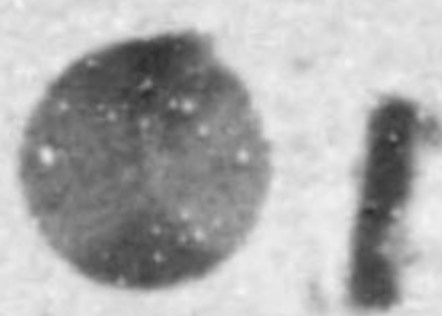
ADDED DIST: GOVT, DIPLOMATIC (12 Sep 49)



08989

ROUTINE
UNCLASSIFIED

TOO : 101323 Z
MCN : AUA 85/10



✓
GENERAL HEADQUARTERS, FAR EAST COMMAND
ADJUTANT GENERAL'S OFFICE
RADIO AND CABLE CENTER

SM
SM
SM

INCOMING MESSAGE

Confidential
ROUTINE

10 Sep 49

FROM : DA WASHINGTON DC
TO : SCAP (ACTING POLITICAL ADVISER) TOKYO JAPAN
INFO : CSUSA WASH DC
NR : 101122 Z (RELAYS MSG DTG 100914 Z FROM DEPT OF STATE)
(STATE RELAY SVC 47, SEPT 10, 5 AM SIGNED ACHESON)
(RELAY FROM CANBERRA SENT STATE 187, SEPT 6, 4 PM)
(SENT DEPARTMENT 187, REPEATED TOKYO, BANGKOK)

Formal note from External Affairs today states Australia unable support either substance US proposal regarding Japanese gold or manner of its implementation (DEPTEL 131 Sept 1 and previous). Note says that Australia not convinced that title which should be recognized by Allies has been established, particularly in view abnormal conditions prevailing at time Japan is said to have earmarked; that US will recall Thai was then at war with Australia and that Indo China was under Japanese occupation, and that in absence detailed information Australia has reason assume the services on which Thai and French claims rest were performed in furtherance Japanese war effort against Allies.

Australia therefore considers gold should be regarded for present purpose as part of Japanese assets and its ultimate disposal laid down in peace treaty. Even if regarded as transferred the assets should still be regarded as enemy assets in possession occupying forces and available to meet war damage and other claims by Allies on enemy countries. In any event matter should be fully considered and acted upon by FEC before any directive is sent to SCAP.

FOSTER

Paraphrase not required. Handle as correspondence of classification carried hereon
08982 per paragraphs 51i and 60a, AR 380 (over)

ROUTINE
U. S. GOVERNMENT PRINTING OFFICE 16-57508-1

Confidential

Confidential
ROUTINE

FROM : DA NR : 101122 Z DTD 10 SEP 49 CONTINUED

ACTION: DIPLOMATIC

INFORMATION: COMMANDER IN CHIEF, CHIEF OF STAFF, GOVT, ECON & SCI,
CIV PROP CUST

08982

ROUTINE
Confidential
-2-

TOO : 101122 Z
MCN : 51971

GENERAL HEADQUARTERS, FAR EAST COMMAND
ADJUTANT GENERAL'S OFFICE
RADIO AND CABLE CENTER

JA
ewj

✓ Hold
CHH

INCOMING MESSAGE

TER

UNCLASSIFIED
ROUTINE

9 Sep 49

FROM : CG USARPAC FT SHAFTER TH
TO : SCAP (GOVT SEC ATTN MR PIERCE MACCOY) TOKYO JAPAN
NR : M 38158

Please advise Mr Harwood Hoover that father Mr Blaine Hoover arrived Tripler Gen Hosp Oahu TH 7 Sep 49. Holding his own. ETD for ZI approximately 13 Sep 49.

NO SIG

ACTION : GOVT

080 08448

ROUTINE
UNCLASSIFIED

TOO : 090259 Z
MCN : AUD 35/09

Rezzo

Mr. Napier - 1 copy

admin

Mr. McCoy 1 copy

admin

Pers Clerk

F

✓
GENERAL HEADQUARTERS, FAR EAST COMMAND
ADJUTANT GENERAL'S OFFICE
RADIO AND CABLE CENTER

F
JA
bjf

INCOMING MESSAGE

TER

Restricted
PRIORITY

9 Sep 49

FROM : DA WASH DC

TO : SCAP (USPOLAD) TOKYO JAPAN

INFO : CSUSA WASH DC

NR : 090316 Z (PASSES MSG DTG 090120 Z FROM STATE) (STATE SERIAL
435 SIGNED ACHESON DATED SEP 8, 9 PM)

Re DEPTTEL 432, Sep 6.

Understand UNESCO DG has invited Bunce in his capacity as
Chairman Expert Committee on Jap to come Paris and during UNESCO
conference serve as DG Consultant.

Strongly urge Bunce attend accompanied by Jap advisers as
best device to get SCAP group to conference since UNESCO apparently
cannot formally invite SCAP rep as visitor.

Preliminary steps already taken to urge EXBD on Sep 13 re-
verse decision and invite SCAP rep as observer. Also believe
presence of SCAP party in Paris at that time would strengthen cur
case before EXBD.

NO SIG

ACTION : DIPLOMATIC

INFORMATION : COMMANDER IN CHIEF, CHIEF OF STAFF, G-1, G-2,
AG, GOVT, ECON & SCI, LEGAL

08442
as of
Rizzo
Hange
F

PRIORITY

TOO : 090316 Z
MCN : 51899

Restricted
Paraphrase not required. Handle as correspondence of classification carried hereon
per paragraphs 51i and 60a, AR 380-5.

✓
GENERAL HEADQUARTERS, FAR EAST COMMAND
ADJUTANT GENERAL'S OFFICE
RADIO AND CABLE CENTER

INCOMING MESSAGE

JA
jbl

UNCLASSIFIED
ROUTINE

TER

9 Sept 49

FROM : SEC STATE WASH DC

TO : SCAP (USPOLAD) TOKYO JAPAN

NR : 090230 Z (BOOK MESSAGE) (CIRCULAR 8TH FROM AGRICULTURE)

September Official Cotton Estimate 14,943,000 bales in-
creased 138,000 over Aug, Texas up 550,000, Georgia 30,000
offsetting deterioration central belt and Carolinas.

ACHESON

INFORMATION : COMMANDER IN CHIEF, CHIEF OF STAFF, G-4, AG, GOVT,
ECON & SCI, NAT RESOURCES, DIPLOMATIC

OE 489

ROUTINE
UNCLASSIFIED

TOO : 090230 Z
MCN : AUA 46/09

*Ext 0
Rizzo
μ*

✓
GENERAL HEADQUARTERS, FAR EAST COMMAND
ADJUTANT GENERAL'S OFFICE
RADIO AND CABLE CENTER

1315
/

INCOMING MESSAGE

SM
ehc

Restricted
ROUTINE

GGG

9 Sep 49

FROM : DA WASH DC
TO : SCAP (ACTG POLAD) TOKYO JAPAN
INFO : CSUSA WASH DC
NR : 082225 Z (PASSES FROM STATE DTG 081620 Z) (STATE SVC
83 SIGNED ACHESON DTD SEP 8, NOON) (RELAYS FROM PEIPING SENT
SENT DEPT 1499, SEP 8, 11 AM SIGNED CLUB)

RECONTEL 1380, August 18 (sent only Aug 27 due oversight).
Consulate in receipt SCAP inquiry Aug 30 re offer coking
coal for future reference. San Yang has been requested supply
information.

SCAP Inquiry Report availability answered REPTEL.

San Yang asks that if feasible there be designated American,
Japanese or other foreign company, Tokyo with whom they could get
in touch re proffered sale Manchurian North China products.

In view approval in principle restoration Sino-Japanese trade
and since as indicated REPTEL best procedure deems be through
giving opportunity direct contact between concerned parties,
request seems reasonable.

NO SIG

ACTION : DIPLOMATIC

INFORMATION : COMMANDER IN CHIEF, CHIEF OF STAFF, G-2, AG,
GOVT, ECON & SCI

08325

ROUTINE

TOO : 082225 Z
MCN : 51884

Paraphrase not required. Handle as correspondence of classification carried hereon
per paragraphs 51i and 60a, AR 380-5.

*exp
Pizzo
Hauge
P*

✓
GENERAL HEADQUARTERS, FAR EAST COMMAND
ADJUTANT GENERAL'S OFFICE
RADIO AND CABLE CENTER

SM
ehc

INCOMING MESSAGE

UNCLASSIFIED
ROUTINE

GGG

9 Sep 49

FROM : SEC STATE WASH DC
TO : CINCFE (USPOLAD) TOKYO JAPAN
NR : 433 8TH

URTEL 1204 Y Sept 7 assumption representation Japanese
interests Belgium not desired reference inquiries should be
made Belgian Mission Tokyo.

ACHESON

ACTION : DIPLOMATIC

INFORMATION : COMMANDER IN CHIEF, CHIEF OF STAFF, AG, GOVT,
ECON & SCI

08368

ROUTINE
UNCLASSIFIED

TOO : 090005
MCN : AUD 12/09

*End
Ruzzo
f*

✓
GENERAL HEADQUARTERS, FAR EAST COMMAND
ADJUTANT GENERAL'S OFFICE
RADIO AND CABLE CENTER

SM
ehc

INCOMING MESSAGE

UNCLASSIFIED
ROUTINE

GGG

9 Sep 49

FROM : SEC STATE WASH DC
TO : CINCFE (USPOLAD) TOKYO JAPAN
NR : 433 8TH

URTEL 1204 Y Sept 7 assumption representation Japanese
interests Belgium not desired reference inquiries should be
made Belgian Mission Tokyo.

ACHESON

ACTION : DIPLOMATIC

INFORMATION : COMMANDER IN CHIEF, CHIEF OF STAFF, AG, GOVT,
ECON & SCI

08368

ROUTINE
UNCLASSIFIED

TOO : 090005
MCN : AUD 12/09

End
ruzz
f

GENERAL HEADQUARTERS, FAR EAST COMMAND
ADJUTANT GENERAL'S OFFICE
RADIO AND CABLE CENTER

EFF
ceb

INCOMING MESSAGE

EFF

UNCLASSIFIED
ROUTINE

8 Sep 49

FROM : CRAM (FROM BRUSSELS)
TO : SCAP (US POLAD) TOKYO JAPAN
NR : 081055 Z (1204 SEP 7) (SENT DEPARTMENT REPEATED USPOLAD TOKYO)

Belgian Postal Authorities apparently at suggestion FONOFF now forwarding to the Embassy inquiries addressed to former Japanese Embassy Brussels. Many of these letters are concerned with Commercial Opportunities Trade with Japanese.

During War Swedish Legation was in charge of Japanese interests here but Swedes now claim that this representation has lapsed. It is true that SCAP is in complete charge of Japanese Overseas Relations, both Commercial and otherwise. Does Department desire this Mission to undertake representation of Japanese interests in Belgian or should we suggest such inquiries be made of Belgian Mission in Tokyo? Please telegraph."

MILLARD

ACTION : DIPLOMATIC

INFORMATION : COMMANDER IN CHIEF, CHIEF OF STAFF, AG, GOVT,
ECON & SCI

08109

ROUTINE
UNCLASSIFIED

TOO : 081055 Z
MCN : AUC 82/08

GENERAL HEADQUARTERS, FAR EAST COMMAND
ADJUTANT GENERAL'S OFFICE
RADIO AND CABLE CENTER

EFF
ED'S

INCOMING MESSAGE

Confidential
ROUTINE

EFF

8 Sep 49

FROM : DA WASH DC

TO : SCAP (USPOLAD) TOKYO JAPAN

NR : 072004 Z (RELAYS MSG DTG 071429 Z FROM STATE DEPT)
(SENT DEPT STATE 778, SEP 3, 5 PM RPTD CANBERRA AND
TOKYO AND LONDON UNNUM FROM BANGKOK SIGNED STANTON)

"1. I have orally informed Prime Minister of favorable decision reached by US Govt re return to Thailand of gold earmarked Japan. Also made clear other govts representing FEC must be consulted before directive issued SCAP. Prime Minister exceedingly pleased and said US Govt decision was great mark friendship for Thailand and would be deeply appreciated by Thai people. He added return gold would materially help improve financial position this country and greatly strengthen currency (DEPCIRTEL Aug 26, 8 AM).

"2. Also informed my British colleague decision on gold. He showed me telegram just received from London which stated UK Govt would want satisfactory proof Thailand title to gold. As previously reported, Thompson has on several occasions urged his govt support Thai Govt for return this gold. He said he was certain UK Govt would not see to return the gold to settlement British claims against that govt.

"3. As regards reaction Australian Govt and particularly point 3 Canberra's 179, Aug 31 to Dept, I have ascertained from Thompson Australian claims against Thai Govt which incidentally on basis revised figure only total 770,000 lbs are included with British and other Commonwealth claims. As previously reported, negotiations in progress many months between British and Thai reach agreement lump-sum settlement all these claims including Australian. Thompson informed me that prospect lump-sum settlement near future fairly good at between 5 and 6,000,000 lbs. Since Australian claims lumped with British and other Commonwealth claims and prospect lump-sum settlement thereof near

(over)

07519 Paraphrase not required. Handle as correspondence of classification carried hereon per paragraphs 51f and 60a, AR 600-5

Confidential

Confidential
ROUTINE

FROM : DA _____ NR : 072004 Z _____ 8 SEP 49 _____ CONT 'D _____

future fairly good, cannot see any justification Australian Govt trying return gold Thailand to settlement Australian war claims."

ACHESON

ACTION : DIPLOMATIC

INFORMATION : COMMANDER IN CHIEF, CHIEF OF STAFF, GOVT,
ECON & SCI, CIV PROP CUST

07879

ROUTINE

Confidential

TOO : 072004 Z
MCN : 51830



GENERAL HEADQUARTERS, FAR EAST COMM
ADJUTANT GENERAL'S OFFICE
RADIO AND CABLE CENTER

JA
ttb

INCOMING MESSAGE

UNCLASSIFIED
ROUTINE

TBB

7 Sep 49

FROM : AMERICAN FORGE CO OAKLAND CALIF

TO : SCAP TOKYO JAPAN

NR : 07 NPT

Understand you are authorizing the purchase of approximately 400 tons grinding media as one of largest manufacturers we would appreciate opportunity of quoting. Please cable specification collect.

NO SIG

ACTION : ECON & SCI

INFORMATION : GOVT, NAT RESOURCES

Handwritten signatures and initials, including the number 07504.

ROUTINE
UNCLASSIFIED

TOO : 07 NPT
MCN : COMTEL

GENERAL HEADQUARTERS, FAR EAST COMMAND
ADJUTANT GENERAL'S OFFICE
RADIO AND CABLE CENTER

JA
bjf

INCOMING MESSAGE

Redacted
ROUTINE

WG

7 Sep 49

FROM : DA WASH DC

TO : SCAP (USPOLAD) TOKYO JAPAN

INFO : CSUSA WASH DC

NR : 070252 Z (SVC 6317) (RELAYS MSG FROM STATE DEPT DTG
062155 Z) (STATE SERIAL 432 SEPT 6, 5 PM SIGNED ACHESON)
(SENT TOKYO 432, RPTD PARIS 33C1)

Dept strongly favors attendance SCAP official and Jap Nationals Paris UNESCO Conference. USDEL will use exec board ext mtg Sep 13 reverse previous decision and invite SCAP observer in view strong spontaneous Jap interest UNESCO. Favorable action expected. Desirable SCAP official be present with credentials to assume observer capacity. Japs cld be technical advisers. If action unfavorable, SCAP group cld be visitors. Most sessions public and much cld be gained from observation and consultation. USDEL cld use services SCAP rep as US Natl at seam of conference. For substantive and technical reasons formal SCAP participation USDEL does not appear feasible.

It is hoped SCAP on own initiative will send rep and Japs as visitors. Although formal invitation as visitors not necessary, UNESCO secretariat being urged send invitation.

NO SIG

ACTION : DIPLOMATIC

INFORMATION : COMMANDER IN CHIEF, CHIEF OF STAFF, G-1, G-2, AG,
GOVT, ECON & SCI, LEGAL

07588

ROUTINE

TOO : 070252 Z
MCN : 51804

Paraphrase not required. *Redacted* Handle as to correspondence of classification carried hereon per paragraphs 51i and 60a, AR 380-5.

GENERAL HEADQUARTERS, FAR EAST COM. AND
ADJUTANT GENERAL'S OFFICE
RADIO AND CABLE CENTER

✓
Misc

INCOMING MESSAGE

PTS
rjs

UNCLASSIFIED
PRIORITY

6 Sep 49

FROM : CO HANEDA AFB JAPAN

TO : CINCPAC TOKYO JAPAN, CG FEAF TOKYO JAPAN, CG EIGHTH
ARMY YOKOHAMA JAPAN, KMAC SEOUL KOREA, CG 5TH AF NAGOYA
JAPAN, CG FEAMCOM FUCHU JAPAN, COMNAVFE TOKYO JAPAN,
CG GOC BCOF KURE JAPAN, CG 1503D ATW MATS TOKYO JAPAN,
CO 1808TH AACS WG TOKYO JAPAN, CO 2143D AIR WEA WG TOKYO
JAPAN, CO 5TH AF WEA STN NAGOYA JAPAN, WVVV ALL SHIPS
AT SEA, CO BOFU AFB JAPAN, CO ITAMI AFB JAPAN

NR : 052103 Z (BOOK MSG)

Tropical Forecast Nbr 10 for Typhoon Lise. All clear for Nanpo
Shoto Islands and Southern Honshu. Advisory all others.

Typhoon Lise centered 470 miles southeast of Tokyo at
060400 K in vicinity 29.2 north 145.5 east moving 30 degs at
12 knots with max winds near ctr 110 knots. Lise forecast to
continue to move northeasterly and be centered 475 miles east
south east from Tokyo at 070400 K with maximum winds 110
knots near ctr. Typhoon Lise is following Madeline into the
North Pacific Area.

NO SIG

DISTRIBUTION : SPECIAL

Demetrius
epo
7

07128

PRIORITY
UNCLASSIFIED

TOO : 052103 Z
MCN : AUA 01/06

✓
Misc

GENERAL HEADQUARTERS, FAR EAST COMI ID
ADJUTANT GENERAL'S OFFICE
RADIO AND CABLE CENTER

TER
trm

INCOMING MESSAGE

EMERGENCY" TER

UNCLASSIFIED
EMERGENCY

6 Sep 49

FROM : CO 20-5 AWS DET HANEDA AFB JAPAN

TO : CINCPAC TOKYO JAPAN, CG FEAF TOKYO JAPAN, CG EIGHTH ARMY
YOKOHAMA JAPAN, CG 5TH AF NAGOYA JAPAN, CG FEAMCOM
TACHIKAWA JAPAN, CO 1808TH AACS WG TOKYO JAPAN, CO 2143D
AIR WEA WG TOKYO JAPAN, WVVV (ALL SHIPS AT SEA), CG
1503D ATW MATS

NR : 051515 Z

Tropical Forecast Number 9 for Typhoon Lise. Warning for the Nanpo Shoto Islands. Alert for Southern Honshu between 139 east and 141 east. All clear for Bonins. Advisory all others. Typhoon Lise centered 510 miles southeast from Tokyo at 052200 K in vicinity 28.1 north 144.8 east moving north-eastward at 12 knots with max winds near center 120 knots. Lise forecast to continue to move northeastward and be centered 440 miles east southeast from Tokyo at 052200 K in vicinity 32.2 north 147.5 east with max winds estimated 110 knots. Southeastern Honshu advised to remain alert status against the possibility of Lise turning from her course even though there is little probability that she will do so. Air Force plans 2 recon missions 6 Sept.

NO SIG

DISTRIBUTION : SPECIAL

07119

EMERGENCY
UNCLASSIFIED

TOO : 051515 Z
MCN : AJA 29/05

EMERGENCY"

GENERAL HEADQUARTERS, FAR EAST COM ID
ADJUTANT GENERAL'S OFFICE
RADIO AND CABLE CENTER

TER
trm

INCOMING MESSAGE

"EMERGENCY"

UNCLASSIFIED
EMERGENCY

5 Sep 49

FROM : CO 20-5 AWS DET HANEDA AFB JAPAN
TO : CINCPAC TOKYO JAPAN, CG FEAF TOKYO JAPAN, CG EIGHTH ARMY
YOKOHAMA JAPAN, CO 2143D AIR WEA WG TOKYO JAPAN,
INFO : CHF KMA4 SEOUL KOREA, CG 5TH AF NAGOYA JAPAN, CG FEAMCOM
FUCHU JAPAN, COMNAVFE TOKYO JAPAN, GOC BCOF KURE JAPAN,
CG 1503D ATW MATS TOKYO JAPAN, CO 1808TH AACS WG TOKYO
JAPAN, CO 5TH AF WA STA NAGOYA JAPAN, WVW (ALL SHIPS
AT SEA), CO ITAMI AFB JAPAN
NR : 050900 Z

Tropical Forecast Number 8 for Typhoon Lise. Warning for Bonins, alert Nanpo Shoto Island Group, Southern Honshu from 139 east to 141 east, advisory all others. Typhoon Lise centered 540 miles south southeast of Tokyo at 051600 K in vicinity of 27.0 north 144.0 east moving 030 degs 12 knots with max winds near center of 120 knots in SSE quadrant. Lise forecast to continue northeasterly movement and be centered 460 miles south east of Tokyo at 061600 K in vicinity of 31.1 north 146.7 east with max winds near center of 110 knots. Southern Honshu put on alert because inverse curvature though not expected is possible and would affect Tokyo Area within 48 hours. Air Force Recon plans 2 missions tomorrow.

NO SIG

DISTRIBUTION : SPECIAL

07113

EMERGENCY
UNCLASSIFIED

TOO : 050900 Z
MCN : AUD 19/05

"EMERGENCY"

GENERAL HEADQUARTERS, FAR EAST COM'ND
ADJUTANT GENERAL'S OFFICE
RADIO AND CABLE CENTER

Misc

27

GGG
gdc

INCOMING MESSAGE

GGG

EMERGENCY
UNCLASSIFIED
EMERGENCY

5 Sept 49

Grant

FROM : DET COMDR HANEDA WEATHER CENTRAL JAPAN

TO : CINCPAC TOKYO JAPAN, CG FEAF TOKYO JAPAN, CG EIGHTH ARMY YOKOHAMA, CG 5TH AF NAGOYA JAPAN, CG 1503D ATW MATS HANEDA AFB JAPAN, CO 1808TH AAGS WING TOKYO JAPAN, CO 2143D AIR WEA WG TOKYO JAPAN, OIC 5TH AF WEA STN NAGOYA JAPAN

INFO : CHIEF KMAQ SEOUL KOREA, CG FEAMCOM FUCHU JAPAN, COMNAVFE TOKYO JAPAN, CG 600 BCOF KURE JAPAN, CO BOFU AFB JAPAN, CO ITAMI AFB JAPAN

NR : 041550 Z

Tropical Forecast Nbr 5 for Tropical Typhoon Madeline. Alert for Eastern Honshu N. of 38 degs N latitude and E Hokkaido. Advisory others. Tropical Typhoon Madeline centered 550 miles E of Tokyo at 042200 K in vicinity 34.6 N 150.0 E moving northward at 9 knots with maximum winds near center 70 knots.

Madeline Forecast to continue to move northward next 24 hrs before becoming extra tropical and be centered 600 miles north-east of Tokyo at 052200 K in vicinity 38.2 N 150.0 E with maximum winds 50 knots.

Madeline is not expected to affect the mainland of Honshu during the next 24 hours.

NO SIG

DISTRIBUTION : SPECIAL

07073

EMERGENCY
UNCLASSIFIED

TOO : 041550 Z
MCN : AUC 26/04

EMERGENCY

GENERAL HEADQUARTERS, FAR EAST COMMAND
ADJUTANT GENERAL'S OFFICE
RADIO AND CABLE CENTER

✓
MISC

GGG
gdc

INCOMING MESSAGE

UNCLASSIFIED
PRIORITY

5 Sept 49

FROM : DET COMDR HANEDA WEATHER CENTRAL JAPAN

TO : CG FEAF TOKYO JAPAN, CG 1503D ATW MATS HANEDA AFB JAPAN,
CO 1808TH AACV WING TOKYO JAPAN, CO 2143D AIR WEA WG TOKYO
JAPAN,

INFO : CINCPAC TOKYO JAPAN, CG EIGHTH ARMY YOKOHAMA JAPAN, CHIEF
KMAF SEOUL KOREA, CG 5TH AF NAGOYA JAPAN, CG FEAMCOM FUCHI
JAPAN, COMNAVFE TOKYO JAPAN, CG GOC BCOF KURE JAPAN, OIC
5TH AF WEA STN NAGOYA JAPAN, CO BOFU AFB JAPAN, CO ITAMI
AFB JAPAN, WVWV (ALL SHIPS AT SEA)

NR : 041545 Z

Tropical Forecast Nbr 5 for Tropical Typhoon Lise. Warning
for Iwo Jima, Bonins. Alert for the Nanpo Shoto Island Group.
Advisory all others. Tropical Typhoon Lise is center 90 miles SE
from Iwo Jima at 042200 K in vicinity 23.7 N 142.3 E moving north-
eastward at 12 knots with maximum winds near center 120 knots.

Lise forecasted to continue moving northeastward next 24 hrs
and be centered 250 miles NE from Iwo Jima at 052200 K with maxi-
mum winds near center 110 knots. Lise is now causing Typhoon weather
over Iwo Jima. Last reports for 042100 K indicate northeasterly
winds with gusts to 65 knots. Air Force plans 2 Reconnaissance
Missions 5 Sept to determine position.

NO SIG

DISTRIBUTION : SPECIAL

07072

PRIORITY
UNCLASSIFIED

TOO : 041545 Z
MCN : AUA 30/04

GENERAL HEADQUARTERS, FAR EAST COMMAND
ADJUTANT GENERAL'S OFFICE
RADIO AND CABLE CENTER

PTS
ghf

INCOMING MESSAGE
EMERGENCY

North

UNCLASSIFIED
EMERGENCY

5 Sept 49

FROM : NORTH GUAM WEATHER CENTRAL
TO : CINCPAC TOKYO JAPAN
INFO : BASE WEATHER HARMON AFB GUAM, CG MARBO GUAM
NR : 040420 Z

Tropical Cyclone Forecast Number 3 for Tropical Storm Madeline. Recon failed to find any closed circulation, however wind pattern indicates storm to be located in the vicinity of 30.0 N and 148.0 E at 040330 Z. Storm seems to be dissipating and moving north northeast at 12 knots. Max winds reported to be 45 knots. Above position is 500 miles NE of Iwo Jima and 600 miles SE of Tokyo, forecast movement will have storm pass at least 500 miles east of Japan. Lack of moisture aloft seems to be destroying the storm.

NO SIG

DISTRIBUTION : SPECIAL

07051

EMERGENCY
UNCLASSIFIED

TOO : 040420 Z
MCN : AUG 11/04

EMERGENCY

GENERAL HEADQUARTERS, FAR EAST COMMAND
ADJUTANT GENERAL'S OFFICE
RADIO AND CABLE CENTER

✓
Misc

INCOMING MESSAGE

PTS
jw
PTS

[Handwritten signature]

UNCLASSIFIED
PRIORITY

4 Sep 49

FROM : CG HANEDA AFB HANEDA JAPAN
TO : CHIEF KMG SEUL KOREA, CG GOC BCOP KURE JAPAN, CO BOPU
AFB YAMAN, CG ITAMI AFB JAPAN
INFO : CINCPAC TOKYO JAPAN, CG FEAF TOKYO JAPAN, CG EIGHTH ARMY
YOKOHAMA JAPAN, CG 5TH AF NAGOYA JAPAN, CG FEAMCOM FUCHU
JAPAN, COMNAVFE TOKYO JAPAN, CG 1503D ATW MATS HANEDA
JAPAN, CO 1808TH ACS WING TOKYO JAPAN, CO 2143D AIR WEA
WG, CO 5TH AF WEA STN NAGOYA JAPAN, WVVV (ALL SHIPS AT
SEA)
NR : 040300 Z (BOOK MESSAGE)

Tropical Forecast Number 3 for Typhoon Madeline. Alert for Eastern Coast of Honshu north of 37 degs North Latitude. Green Southeastern Honshu, Iwo Jima, Bonins. This all clear for Madeline only. Standby for condition alert for Typhoon Lise. Typhoon Madeline 580 miles east southeast from Tokyo at 041000 K in vicinity 32.1 north 149.9 east moving northward at 15 knots with maximum winds 70 knots near center.

Madeline forecast to continue moving northward for next 24 hours and be centered 500 miles northeast from Tokyo at 051000 K in vicinity 38.2 north 149.9 east with maximum winds 70 knots near center. Madeline not expected to affect the Empire during next 24 hours.

NO SIG

DISTRIBUTION: SPECIAL

07048

PRIORITY
UNCLASSIFIED

TOO : 040300 Z
MCN : AUB 10/04

GENERAL HEADQUARTERS, FAR EAST COMMAND
ADJUTANT GENERAL'S OFFICE
RADIO AND CABLE CENTER

WE
mrs

✓
Misc
INCOMING MESSAGE

~~UNCLASSIFIED~~
EMERGENCY

4 Sep 49

FROM : CO 20-5 AWS DET HANEDA AFB TOKYO JAPAN

TO : CINCPAC TOKYO JAPAN, CG FEAF TOKYO JAPAN, CG EIGHTH ARMY
YOKOHAMA JAPAN, CHIEF KMAG SEOUL KOREA, CG 5TH AF
NAGOYA JAPAN, CG FEANCOM TACHIKAWA JAPAN, COMNAVPAC TOKYO
JAPAN, CG 1503D ATW MATS HANEDA AFB TOKYO JAPAN, CO
1808TH AACSG WGT TOKYO JAPAN, CO 2143D AIR WEA WGT TOKYO
JAPAN, WVVV (ALL SHIPS AT SEA), CO ITAMI AFB ITAMI JAPAN,
CG 5TH AF WEA SIN NAGOYA JAPAN,

INFO : GOC BCOF, CO BOFU AFB BOFU JAPAN

NR : 032135 Z

Tropical Forecast Number 2 for tropical storm Madeline.
Warning for Iwo Jima, Bonins, alert for southeast coast Honshu
between 135 east and 141 east. Advisory all others.

Tropical Storm Madeline centered 600 miles southeast from
Tokyo at 040400 K in vicinity 30.0 north 150.0 east moving
northward at 15 knots with max winds near center 60 knots.

Madeline forecast to continue to recurve slowly to the
northeast next 24 hours and be centered 600 miles east north east
from Tokyo at 050400 K in vicinity 35.8 north 152.0 east with
max winds 60 knots near center. Due to lack of communications
during night of 3d and 4th, and although position was determined
to a reasonable degree of accuracy, it is advisable to remain on
the alert through southeastern Japan pending further developments.
Air Force plans reconnaissance mission on Madeline 4 Sep.

NO SIG

DISTRIBUTION : SPECIAL

07013

~~UNCLASSIFIED~~
EMERGENCY

000 : 032135 Z
MCN : AUA 114/03

✓
MISC

GENERAL HEADQUARTERS, FAR EAST COMMAND
ADJUTANT GENERAL'S OFFICE
RADIO AND CABLE CENTER

PTS
Jvt

INCOMING MESSAGE

GGG

UNCLASSIFIED
PRIORITY

4 Sep 49

FROM : CO 20-5 AWS DET HANEDA AFB HANEDA JAPAN
TO : CG EIGHTH ARMY YOKOHAMA JAPAN, CG 1503D ATW MATS
HANEDA AFB JAPAN, CO 1808TH AACS WING TOKYO JAPAN,
CO 2143D AIR WEA WG TOKYO JAPAN
INFO : CINCPAC TOKYO JAPAN, CG FEAF TOKYO JAPAN, CHIEF KMAG
SEOUL KOREA, CG 5TH AF NAGOYA JAPAN, CG FEAMCOM FUCHU
JAPAN, COMNAVFE TOKYO JAPAN, CG GOC BCOF KURE JAPAN,
CO 5TH AF WEA STN NAGOYA JAPAN, WVVV (ALL SHIPS AT SEA),
CO BOFU AFB JAPAN, CO ITAMI AFB JAPAN
NR : 040940 Z

Tropical Forecast Number 4 for Tropical Typhoon Madeline.
Alert for eastern Honshu north of 38 degs north latitude,
eastern Hokkaido, advisory all others.
Typhoon Madeline is centered 600 miles southeast of Tokyo
at 041600 K in vicinity 33.7 north 149.9 east moving northward
at 9 knots with maximum winds near center 70 knots.
Madeline Forecast to continue to move northward for next
24 hours and be centered 500 miles east northeast of Tokyo at
051600 K in vicinity 37.3 north 149.9 east with maximum winds
near center 70 knots. Madeline will not affect the Tokyo,
Yokohama area, and is not expected to affect the mainland of
Honshu and Hokkaido. However an alert status is adviseable.

NO SIG

DISTRIBUTION : SPECIAL

07063

PRIORITY
UNCLASSIFIED

TOO : 040940 Z
MCN : AUD 20/04

✓
GENERAL HEADQUARTERS, FAR EAST COMMAND
ADJUTANT GENERAL'S OFFICE
RADIO AND CABLE CENTER

1000

JA
lej

INCOMING MESSAGE

WG

UNCLASSIFIED
ROUTINE

2 Sep 49

FROM : CG FIRST ARMY GOV IS NEW YORK

TO : CINCPAC TOKYO JAPAN

NR : AHFAG-0 3292

Telegram from Massachusetts Institute of Technology is repeated "Re telegram to MIT 29th urgent that passports of Japanese Students Hasiguti Yamada and Obayashi be extended project will not end for another month. We will be responsible for support confirmation letter follows."

NO SIG

ACTION : CIV I & E

INFORMATION : COMMANDER IN CHIEF, CHIEF OF STAFF, G-1, G-2, G-3, AG, GOVT, DIPLOMATIC

06222

ROUTINE
UNCLASSIFIED

TOO : 011125 Z
MCN : AUB 115/01

GENERAL HEADQUARTERS, FAR EAST COMMAND
ADJUTANT GENERAL'S OFFICE
RADIO AND CABLE CENTER

SM
ac

INCOMING MESSAGE

EMERGENCY
UNCLASSIFIED
EMERGENCY

1 Sep 49

Govt

FROM : CO 20-5 PAWS DET HANEDA AFB JAPAN

TO : CG FEAF TOKYO JAPAN, CG EIGHTH ARMY YOKO JAPAN,
CG 5TH AF NAGOYA AFB JAPAN, COMNAVFE TOKYO JAPAN,
CO 1808TH AACS WING TOKYO JAPAN, CO 2143D AIR WEA WG
TOKYO JAPAN

INFO : CINCFE TOKYO JAPAN, RMAG SEOUL KOREA, CG FEAMCOM
FUCHU JAPAN, CG GOC BCOF KURE JAPAN, CG 1503D ATW
MATS TOKYO JAPAN, WVVV (ALL SHIPS AT SEA), CO BOFU
AFB KURE JAPAN, CO ITAMI AFB, CO 5TH AF WEA STN
NAGOYA JAPAN

NR : 010905 Z

Tropical Forecast Number 13 for Storm Kitty all clear North Honshu and Hokkaido, advisory all others. Kitty located 75 miles north of Sapporo at 011600 K, in vicinity of 395 north and 141 east, with maximum winds 45 knots. Kitty is forecast to continue northward movement, to be centered 300 miles north-northeast of Sapporo near 47 north and 142 east at 020400 K, with max of 35 knots. Kitty no longer operational hazardous after next 6 hours, heavy rains and squalls will continue throughout north Honshu and Hokkaido for next 12 hours. This is final forecast for Kitty.

NO SIG

DISTRIBUTION : SPECIAL

06131

EMERGENCY
UNCLASSIFIED
TOO : 010905 Z
MCN : AUB 84/01

✓
GENE HEADQUARTERS, FAR EAST COMM D
ADJUTANT GENERAL'S OFFICE
RADIO AND CABLE CENTER

SM
mb

INCOMING MESSAGE

'EMERGENCY'

LRS

UNCLASSIFIED
EMERGENCY

1 Sep 49

FROM : CO 20-5 AWS DET HANEDA AFB JAPAN

TO : CINCPAC TOKYO JAPAN, CG FEAF TOKYO JAPAN, CG EIGHTH ARMY
YOKOHAMA JAPAN, CG 5TH AF NAGOYA JAPAN, COMNAVFE TOKYO
JAPAN, CG 1503L ATW MATS, CO 1808TH AACS WG TOKYO JAPAN,
CG 2143D AIR WEA WG TOKYO JAPAN, OIC 5TH AF WEA STN
NAGOYA JAPAN

INFO : CHF KMAG SEOUL KOREA, CG FEAMCOM FUCHU JAPAN, CG GOC
BCCF KURE JAPAN, WVVV (SHIPS AT SEA), CO BOFU AFB
BOFU JAPAN, CO ITAMI AFB ITAMI JAPAN

NR : 010430 Z

Tropical Forecast No 12 for storm Kitty. Storm Kitty located 90 miles southwest of Misawa AFB in vicinity of 40 north and 140 east at 011000 K, with max winds of 50 knots. Kitty forecast to continue northerly movement of 010 degs true at 25 knots, to be located 200 miles north of Sapporo at 012200 K. with a max wind 50 knots. And further forecast to be 400 miles northnortheast of Sapporo at 021000 K, with max winds of 35 knots. Forecast for Northern Honshu: Heavy rains, squally weather, surface winds 50 knots, with gusts in mountain passes to 65 knots. This weather will persist for next 12 hours. Forecast for Hokkaido: Heavy rains, squally weather, surface winds 50 knots, gusts to 65 knots, for next 20 hours. Storm Kitty is not expected to be operationally hazardous after 24 hours. Unless situation warrants forecast No 13 will be the final forecast.

DISTRIBUTION : SPECIAL

NO SIG

05032

EMERGENCY
UNCLASSIFIED

TOO : 010430 Z
MCN : AUA 52/01

'EMERGENCY'

GENERAL HEADQUARTERS, FAR EAST COMM. ID
ADJUTANT GENERAL'S OFFICE
RADIO AND CABLE CENTER

3M
gem

INCOMING MESSAGE

GGG

UNCLASSIFIED
OPERATIONAL IMMEDIATE

1 Sept 49

FROM : 15-6 AMS DETACH KANEDA AFB
TO : CINCPAC TOKYO JAPAN, CG RYCOM OKINAWA, CG 20 AF KADENA
AFB OKINAWA, CO 15TH WEATHER SQ
INFO : DIST ENGR OKINAWA
NR : 010001 Z

Forecast No 5 on typhoon Kitty issued at 312330 Z.
Typhoon Kitty located 35.8 north 139.3 east at 311200 Z.
Maximum winds in center 90 knots. Typhoon Kitty is moving 306
degrees at 18 knots. 24 movement forecast position for 2.0
north 139.3 east at 011200 Z. Maximum winds forecast to be 35
knots in center. Typhoon Kitty will dissipate rapidly as it
passes over Honshu and is forecast to be extra tropical in 24
hrs. This will be the last forecast on typhoon Kitty.

NO SIG

DISTRIBUTION : SPECIAL

05977

OPERATIONAL IMMEDIATE
UNCLASSIFIED

TOO : 010001 Z
NOM : AUB 39/01

✓
GENERAL HEADQUARTERS, FAR EAST COMMAND
ADJUTANT GENERAL'S OFFICE
RADIO AND CABLE CENTER

[Signature]
SM
tjy

INCOMING MESSAGE
EMERGENCY
UNCLASSIFIED
EMERGENCY

1 Sept 49 *5001*

FROM : NORTH GUAM WEATHER CENTRAL
TO : CINCPAC TOKYO JAPAN
INFO : CG MARBO GUAM, BASE WEATHER HARMON
NR : 010230 Z

Tropical Cyclone Forecast Number 5 for Storm Kitty.
Gale warning Honshu North of 37 N, warning Southern Hokkaido.
At 010000 Z Kitty located near 38.5 N 140.2 E, approx 125
miles North of Tokyo, with max winds estimated at 45 knots
near center with gusts to 60 knots in mountain passes. Kitty
Forecast to become extra Tropical within 12 hours and move
NE along polar trough. No further Tropical Cyclone Forecasts
will be issued on Kitty.

NO SIG

DISTRIBUTION : SPECIAL

05963

EMERGENCY
UNCLASSIFIED
EMERGENCY

TOP : 010230 Z
NOT : AUG 45/01

GENERAL HEADQUARTERS, FAR EAST COMMA.
ADJUTANT GENERAL'S OFFICE
RADIO AND CABLE CENTER

INCOMING MESSAGE

JA
trm

EMERGENCY

UNCLASSIFIED
EMERGENCY

JA

1 Sep 49

FROM : CO 20-5 AWS HANEDA AFB JAPAN

TO : CINCPAC TOKYO JAPAN, CG FEAF TOKYO JAPAN, CG EIGHTH ARMY
YOKO JAPAN, CG 5TH AF NAGOYA JAPAN, COMNAVFE TOKYO JAPAN,
CO 1808TH AACS WING TOKYO JAPAN, CO 2143D AIR WEA WG TOKYO
JAPAN, CO 5TH AF WEA STN NAGOYA JAPAN, CG 1503D ATW MATS
TOKYO JAPAN

NR : 312115 Z

Tropical Forecast Number 11 for Tropical Storm Kitty. Warn-
ing for Honshu north of 38 degs north and for southwestern Hokkaido.
All clear for Honshu south of 38 degs north. Advisory all others.
Tropical Storm Kitty centered 200 miles north northwest from Tokyo
on the West Coast of Honshu at 010400 K in vicinity 38.7 north
139.1 east moving 010 degs 22 knots with max winds of 50 knots
in north east sector. Kitty forecast to continue to move north
Thursday and be located 20 miles west southwest of Sapporo in
Hokkaido at 011600 K and then into Sea of Okhotsk. Winds of 50
knots will accompany Kitty on the east coast of Honshu as Kitty
moves up the west coast. 12 hour forecast for northern Honshu
follows. Squalls and rain over Northern Honshu with SFC winds
southeast 50 knots in vicinity of storm. After storm passes north
winds will remain 20 knots gusts to 35 knots from the south. 24
hour forecast for Hokkaido follows. Squalls and rain will begin

05841

(over)
EMERGENCY
UNCLASSIFIED

General

*Exo
F*

EMERGENCY

UNCLASSIFIED
EMERGENCY

FROM : CO 20-5 AWS HANEDA AFB JAPAN NR : 312115 Z 1 SEP 49
CONTINUED

Thursday morning over Hokkaido and continue throughout period.
Surface winds will be east and south with max winds 35 knots.
Agencies concerned advised to continue precautions against
heavy rains and excessive winds through Northern Honshu Thurs-
day morning and for Hokkaido prepare for heavy rains.

NO SIG

DISTRIBUTION : SPECIAL



05841

EMERGENCY
UNCLASSIFIED

TOO : 312115 Z
MCN : AUB 136/31

GENERAL HEADQUARTERS, FAR EAST COMMAND
ADJUTANT GENERAL'S OFFICE
RADIO AND CABLE CENTER

LCK
ekc

INCOMING MESSAGE

LCK

EMERGENCY
UNCLASSIFIED
EMERGENCY

1 Sep 49

FROM : CO HANEDA AFB (WEA CENTRAL) TOKYO JAPAN

TO : CINCPAC TOKYO JAPAN, CG PEAFC TOKYO JAPAN, CG EIGHTH ARMY
YOKOHAMA JAPAN, CG 5TH AF NAGOYA JAPAN, CG FEAMCOM
TACHIKAWA JAPAN, COMNAVFE TOKYO JAPAN, CO 1808TH AACS
WING TOKYO JAPAN, CO 2143D AIR WEA WG TOKYO JAPAN, OC
OIC 5TH AF WEA STAN NAGOYA JAPAN, WVVV (ALL SHIPS AT SEA),
CG 1503D ATW MATS TOKYO JAPAN

NR : 311539 Z

Tropical Forecast Number 10 for Typhoon Kitty.

Warning for Honshu north of 35 degs north and east of 135
degs east. All clear for Honshu west of 135 degs east and for
Nanpo Shoto. Advisory all others.

Tropical Typhoon Kitty centered over Yokota AFB at 312200 K
moving at 18 knots with maximum winds 75 knots gusts to 90 knots
in northeast quadrant and 60 knots in other sectors near center.

Kitty forecast to continue northward into mountains of Japan
and be greatly broken up due to the terrain and then into the
Japanese sea and be located southwest of Kokkaido as a normal
storm with maximum winds 35 knots near center.

24 hour forecast for warned areas follows. Tokyo and
Yokohama Area will improve during the night and becoming partly
cloudy with heavy rains and strong surface winds from the
southeast at 40 knots gusts to 65 knots. Agencies concerned
advised to continue precautions in Honshu north of Tokyo thursday.

NO SIG

DISTRIBUTION : SPECIAL

05798

EMERGENCY
UNCLASSIFIED

TOO : 311559 Z
MCN : AUB 109/31

EMERGENCY

GENERAL HEADQUARTERS, FAR EAST COMMAND
ADJUTANT GENERAL'S OFFICE
RADIO AND CABLE CENTER

LCK
+ 47

INCOMING MESSAGE

Restricted

LCK

ROUTINE

31 Aug 49

FROM : DA WASHINGTON DC
TO : SCAP (ACTG USPOLAD) TOKYO JAPAN
INFO : CSUSA WASHINGTON DC
NR : 310828 Z (RELAYS MSG DTG 310026 Z FROM STATE DEPT)
(STATE SERIAL 424, AUG 30, 7 PM, SIGNED ACHESON)

Braz Emb transmitted fol note dated Aug 22, 1949, to Dept:
"The Braz Govt is interested in creating a consulate in Tokyo, Japan, and in having, eventually, a Political Representative to SCAP, as do the other powers in Japan.

2. Thus, the Braz Emb would greatly appreciate being advised of the State Departments views on the creating of the consulate as well as on the possibilities of having designated a polit-Dipl Representative who would also deal with the commercial interests of Braz in Japan."

Braz Emb has been informed that it not yet possible establish consulate in Japan but that if Braz Govt desires it may, subject to SCAPs approval, accredit Dipl Representative to SCAP. Braz Govt has, through Dept, requested permission to do so. Dept approves request in view large Jap population in Braz and encouragement restoration pre-war trade pattern between Braz and Jap.

Braz Emb has indicated staff Tokyo would probably be composed of Emb personnel Shanghai being evacuated Gen Gordan approx Sept 23 (ref USCONGEN Shanghai's Cable 170 to you) and if above request approved seeks entry clearance and permission disembark Yokohama for fol persons:

AMB Gastao Paranhos Do Rio Branco;
Con Oswaldo Tavares, wife and minor son, accompanied by female servant.

ACTION : DIPLOMATIC

NO SIG

INFORMATION : COMMANDER IN CHIEF, CHIEF OF STAFF, G-1, G-2,
AG, GOVT

05753

ROUTINE

TOO : 310828 Z

MCN : 51597

Paraphrase not required. Handle as correspondence of classification carried herein per paragraphs 51i and 60a, AR 380-5.

✓
~~SECRET~~

GENERAL HEADQUARTERS, FAR EAST COMMAND
ADJUTANT GENERAL'S OFFICE
RADIO AND CABLE CENTER

LCK
ekc

INCOMING MESSAGE

LCK

"EMERGENCY"

UNCLASSIFIED
EMERGENCY

31 Aug 49

FROM : CO HANEDA AFB (20-5 AWS DET) TOKYO JAPAN

TO : CINCPAC TOKYO JAPAN, CG FEAF TOKYO JAPAN, CG EIGHTH ARMY
YOKOHAMA JAPAN, CG 5TH AF NAGOYA JAPAN, CG FEAMCOM
TACHIKAWA JAPAN, COMNAVPAC TOKYO JAPAN, CG 1503D SEW MATS
TOKYO JAPAN, CG 1808TH A CS WING TOKYO JAPAN, CG 100TH
AIR WEA STA NAGOYA AFB JAPAN, WVV (ALL SHIPS AT SEA),
CG ITAMI AFB JAPAN, CG BOFU AFB JAPAN, CG 2143D WEA WG
TOKYO JAPAN

INFO : CHF KMAG SEOUL KOREA, GOC BCOF KURE JAPAN

NR : 310936 Z

Tropical Forecast Number 9 for Typhoon Kitty warning for
Southern and Eastern Honshu between 135 east and 142 east,
Northern Nanpo Shoto Islands. Advisory all others.

Tropical Typhoon Kitty centered 100 miles south southwest
of Tokyo at 311600 K in vicinity of 34.2 north 139.0 east
with maximum winds near center of 90 knots in northeast sector
and 75 knots others, decreasing rapidly as Kitty moves inland,
moving 360 degrees 17 knots for next 3 hours then accelerating
to 0300degrees 22 knots for next 21 hours.

Kitty forecast to be centered 140 miles northeast of
Unisawa at 011600 K in vicinity of 41.5 north 144.0 east with
max winds near center of 45.

Generally squally weather forecast over warned area for
next 12 hours with continuous rain next 8 hours in Tokyo Area
max winds 50 knots gusts to 60 knots decreasing rapidly after
passage of center. Kitty will degenerate into tropical storm
next 2* to 18 hours with 45 knots maximum winds.

NO SIG

DISTRIBUTION : SPECIAL

05757

EMERGENCY
UNCLASSIFIED

TOO : 310936 Z
MCN : AUB 75/31

"EMERGENCY"

GENERAL HEADQUARTERS, FAR EAST COMMAND
ADJUTANT GENERAL'S OFFICE
RADIO AND CABLE CENTER

INCOMING MESSAGE

EFF
rjs

EMERGENCY
UNCLASSIFIED
EMERGENCY

SM

31 Aug 49

FROM : CO 20-5 AWS DET HANEDA AFB TOKYO JAPAN
TO : CINCPAC TOKYO JAPAN, CG FEAF TOKYO JAPAN, CG EIGHTH
ARMY YOKOHAMA JAPAN, CG 5TH AF NAGOYA JAPAN, CG FEAMCOM
FUCHU JAPAN, COMNAVFE TOKYO JAPAN, CG 1503D ATW MATS
TOKYO JAPAN, CO 1808TH AACS WG TOKYO JAPAN, CO 2143D
AIR WEA WG TOKYO JAPAN, OIC AF WEA STN NAGOYA JAPAN,
WVVV (ALL SHIPS AT SEA), CO ITAMI AFB ITAMI JAPAN
INFO : KMAG SEOUL KOREA, CG 30C BCOF KURE JAPAN, CO BOFU AFB
NR : 310330 Z

Tropical Forecast Nbr 8 for Typhoon Kitty. Warning for
Southern and Eastern Honshu between 135 east and 142 east,
Northern Nanpo Shoto Islands. Advisory all others.

Tropical Typhoon Kitty centered 160 miles south of Tokyo
at 311000 K at 32.7 north 139.9 east. Max winds near ctr
75 knots, moving 360 degrees 17 knots for 12 hrs then curving to
040 degrees 20 knots for next 12 hrs. Kitty forecast to be
centered 280 miles north north east of Tokyo off Eastern
Coast of Honshu at 011000 K in vicinity of 39.4 north 143.3
east with max winds near ctr of 45 knots. 12 hr forecast for
warned area follows: Generally squally conditions with continuous
rain will exist over the area with surface winds in Tokyo Area
50 knots with gusts to 60 knots, high surf and tides.

NO SIG

DISTRIBUTION : SPECIAL

05643

*Gen Whitney
ago
f*

EMERGENCY
UNCLASSIFIED

T00 : 310330 Z
MCN : AUA 44/31

✓
GENERAL HEADQUARTERS, FAR EAST COMMAND
ADJUTANT GENERAL'S OFFICE
RADIO AND CABLE CENTER

f
EFF
ac

INCOMING MESSAGE

EMERGENCY EFF
UNCLASSIFIED
EMERGENCY

31 Aug 49

FROM : CO NORTH GUAM WEATHER CENTRAL
TO : CINCPAC TOKYO JAPAN, CG MARBO GUAM
INFO : BASE WEATHER HARMON
NR : 310230 Z

Tropical Cyclone Forecast Number 4 for Typhoon Kitty. Typhoon warning Eastern Honshu between 138 E and 142 E, Nanpo Shoto Islands, gale warning central and western Honshu between 28 N and 40 N. At 310000 Z Kitty located near 32.8 N 140.3 E, approx 205 miles south of Tokyo, moving northward at 14 knots. Max winds estimated 65 knots with gusts to 90 knots. Radius of max winds 30 miles. Radius of 35 knots winds 200 miles in NE quadrant 150 miles all others. At 010000 Z Kitty forecast to be near 38.2 N 141.8 E, approx 150 miles NE of Tokyo, with max winds estimated 60 knots near center. No recon plan ERYR D00 proximity of typhoon to land stations.

NO SIG

DISTRIBUTION : SPECIAL

05681

Gen Whitney

Exo

f

EMERGENCY
UNCLASSIFIED

TOO : 310230 Z
MCN : AUA 53/31

EMERGENCY

✓
GENERAL HEADQUARTERS, FAR EAST COM
ADJUTANT GENERAL'S OFFICE
RADIO AND CABLE CENTER

INCOMING MESSAGE

TER
trm

EMERGENCY

UNCLASSIFIED
EMERGENCY

TER

31 Aug 49

FROM : CO 20-5 AWS DET HANEDA AFB JAPAN

TO : CINCPAC TOKYO JAPAN, CG EIGHTH ARMY YOKOHAMA JAPAN,
CG FEAF TOKYO JAPAN, CG 5TH AF NAGOYA JAPAN, CG FEAMCOM
TACHIKAWA JAPAN, COMNAVFE TOKYO JAPAN, CG 1503D ATW
MATS TOKYO JAPAN, CO 1808TH AACS WG TOKYO JAPAN,
CO 2143D AIR WEA WG TOKYO JAPAN, CO 5TH AF WEA STN NAGOYA
JAPAN, WVVV (ALL SHIPS AT SEA), CO ITAMI AFB JAPAN

INFO : CHF KMAQ SEOUL KOREA, GOC BCOF KURE JAPAN, CO BOPU
AFB JAPAN

NR : 302328 Z

Tropical Forecast Number 7 for Typhoon Kitty. Warning for Southeastern and Eastern Honshu between 136 east to 142 east, and Nanpo Shoto. Alert for Southeastern Honshu between 132 east, and 136 east. Tropical Typhoon Kitty centered 225 miles south of Tokyo at 310700 Z in vicinity 32 degs north 140 degs east. Maximum winds near center 70 knots. Movement is north at 20 knots. Kitty forecast to be centered 30 miles north east of Tokyo at 311900 K in vicinity 35.8 north 140.3 east with max winds 50 knots near center. 12 hour forecast for warned area follows. Generally squally conditions with continuous rain will exist over the warned areas with surface winds in Tokyo Area 50 knots gusts to 60 knots. Agencies concerned advised to take immediate precautions.

DISTRIBUTION : SPECIAL

NO SIG

05530

EMERGENCY
UNCLASSIFIED

TOO : 302328 Z
MCN : AUC 06/31

EMERGENCY

GENERAL HEADQUARTERS, FAR EAST COMMAND
ADJUTANT GENERAL'S OFFICE
RADIO AND CABLE CENTER

TER
jev

INCOMING MESSAGE

EMERGENCY
UNCLASSIFIED
EMERGENCY

31 Aug 49

FROM : DET COMDR HANEDA WEATHER CENTRAL HANEDA JAPAN

TO : CINCFE TOKYO JAPAN, CG FEAF TOKYO JAPAN, CG EIGHTH ARMY
YOKYHAMA JAPAN, CG 5TH AF NAGOYA JAPAN, CG FEAMCOM
TACHIKAWA JAPAN, COMNAVFE TOKYO JAPAN, GOC BCOF KURE
JAPAN, CO 1808TH AACS WG TOKYO JAPAN, CO 2143D AIR WEA
WG TOKYO JAPAN, OIC 5TH AF WEA STN NAGOYA JAPAN, WVVV
(ALL SHIPS AT SEA), CO ITAMI AFB JAPAN

INFO : CHIEF KMAG SEOUL KOREA, CO BOFI AFB JAPAN, CG 1503D ATW
MATS TOKYO JAPAN

NR : 302015 Z

Tropical Forecast Number 6 for Tropical Typhoon Kitty.
Warning for Southeastern Honshu between 136 East to 142 East,
Nanpo Hoto Island Groups. Alert for Southeastern Honshu between
132 East and 136 East.

Tropical Typhoon Kitty centered 300 miles south southeast
of Tokyo at 310400 K in vicinity 30.8 North 140.8 East moving
northward with maximum winds near center 90 knots in north-
east quadrant and 75 knots other quadrants.

Kitty forecast to continue to recurve during next 18
hours and be centered 60 miles east of Tokyo at 010400 K in
vicinity 35.8 North 141.0 East with maximum winds 60 knots
near center.

Twenty-four Hour forecast for warned areas follow. Fre-
quent showers during morning with increasing middle and high
clouds and lower cloud becoming overcast with general rain
beginning 311200 K. Cloudiness and rain increasing during
rest of period with general squalls prevailing during evening
and night hour. Surface winds northeasterly 20 knots with
gust to 30 knots by 311200 K and gradually increasing to 50
knot gust to 75 knots by 010400 K.

Agencies concerned advised to take immediate precaution
against destructive winds, heavy rains especially inland along
mountains, floods resulting from rains, heavy east and surf.

05476

EMERGENCY
UNCLASSIFIED

GENERAL HEADQUARTERS, FAR EAST COMMAND
ADJUTANT GENERAL'S OFFICE
RADIO AND CABLE CENTER

TER
jev

INCOMING MESSAGE

EMERGENCY
UNCLASSIFIED
EMERGENCY

31 Aug 49

FROM : DET COMDR HANEDA WEATHER CENTRAL HANEDA JAPAN

TO : CINCFE TOKYO JAPAN, CG FEAF TOKYO JAPAN, CG EIGHTH ARMY
YOKYHAMA JAPAN, CG 5TH AF NAGOYA JAPAN, CG FEAMCOM
TACHIKAWA JAPAN, COMNAVFE TOKYO JAPAN, GOC BCOF KURE
JAPAN, CO 1808TH AACS WG TOKYO JAPAN, CO 2143D AIR WEA
WG TOKYO JAPAN, OIC 5TH AF WEA STN NAGOYA JAPAN, WVVV.
(ALL SHIPS AT SEAT, CO ITAMI AFB JAPAN

INFO : CHIEF KMAG SEOUL KOREA, CO BOFI AFB JAPAN, CG 1503D ATW
MATS TOKYO JAPAN

NR : 302015 Z

Tropical Forecast Number 6 for Tropical Typhoon Kitty.
Warning for Southeastern Honshu between 136 East to 142 East,
Nanpo Hoto Island Groups. Alert for Southeastern Honshu between
132 East and 136 East.

Tropical Typhoon Kitty centered 300 miles south southeast
of Tokyo at 310400 K in vicinity 30.8 North 140.8 East moving
northward with maximum winds near center 90 knots in north-
east quadrant and 75 knots other quadrants.

Kitty forecast to continue to recurve during next 18
hours and be centered 60 miles east of Tokyo at 010400 K in
vicinity 35.8 North 141.0 East with maximum winds 60 knots
near center.

Twenty-four Hour forecast for warned areas follow. Fre-
quent showers during morning with increasing middle and high
clouds and lower cloud becoming overcast with general rain
beginning 311200 K. Cloudiness and rain increasing during
rest of period with general squalls prevailing during evening
and night hour. Surface winds northeasterly 20 knots with
gust to 30 knots by 311200 K and gradually increasing to 50
knot gust to 75 knots by 010400 K.

Agencies concerned advised to take immediate precaution
against destructive winds, heavy rains especially inland along
mountains, floods resulting from rains, heavy east and surf,

05476

EMERGENCY
UNCLASSIFIED

UNCLASSIFIED
EMERGENCY

FROM : DET COMDR HANEDA NR : 302015 Z 31 AUG 49 CONT'D

high tides especially along exposed eastern coasts.

NO SIG

DISTRIBUTION : SPECIAL



05476

EMERGENCY
UNCLASSIFIED

TOO : 302015 Z
MCN : AUB 129/30

GENERAL HEADQUARTERS, FAR EAST COMMAND
ADJUTANT GENERAL'S OFFICE
RADIO AND CABLE CENTER

IRS
ret

INCOMING MESSAGE

UNCLASSIFIED
EMERGENCY

LRS

31 Aug 49

FROM : DET COMDR HANEDA WEATHER CONTROL HANEDA AFB TOKYO JAPAN

TO : CINCPAC TOKYO JAPAN, CG FEAF TOKYO JAPAN, CG EIGHTH ARMY
YOKO JAPAN, CG 5TH AF NAGOYA AFB JAPAN, CG FEAMCOM FUCHU
JAPAN, COMNAVFE TOKYO JAPAN, CG GOC BCOF KURE JAPAN, CG
1503D ATW MATS HANEDA AFB TOKYO JAPAN, CO 1606TH AACS WING
TOKYO JAPAN CO 2143D AIR EWA WG, CO 2D MED PORT YOKOHAMA
JAPAN, CO BOFU AFB, CO ITAMI AFB JAPAN, OIC 5TH AF WEA
STN NAGOYA JAPAN

NR : 301545 Z

Tropical Forecast No 5 for Tropical Typhoon Kitty. Warning for southeastern Honshu from 137 east to 141 east and Nanpo Shoto Island Group. Alert for south eastern Honshu from 132 east to 137 east and 141 east to 142 east. All clear for Bonin Islands. Advisory all others.

Tropical Typhoon Kitty centered 375 miles south east of Tokyo at 302200 K in vicinity 29.8 north 142.3 east moving 290 degs 12 knots with maximum winds near center 120 knots in north east quadrants and 90 in other quadrants.

Kitty forecast to recurve in vicinity of Torishima and take up a course to the north and be located 180 miles out of Tokyo at 312200 K in vicinity 3216 north 139.3 east with maximum wind near center 110 knots in north east quadrant and 85 others.

Advise agencies concerned to take precautions in warning and alerted areas before Wednesday night and Thursday against destructive wind, heavy rains and floods there from, heavy seas and surf, high tide.

NC SIG

Gen White
GPO
DISTRIBUTION : SPECIAL

05426

EMERGENCY
UNCLASSIFIED

TOO : 031545 Z
MCN : AUA 110/30

EMERGENCY

GENERAL HEADQUARTERS, FAR EAST COMMAND
ADJUTANT GENERAL'S OFFICE
RADIO AND CABLE CENTER

LRS
ekc

INCOMING MESSAGE

EMERGENCY

LRS

UNCLASSIFIED
EMERGENCY

30 Aug 49

FROM : CO HANEDA AFB (20-5 AWS DET) (WEA CENTRAL) TOKYO JAPAN

TO : CINCPAC TOKYO JAPAN, CG FEAF TOKYO JAPAN, CG EIGHTH ARMY
YOKOHAMA JAPAN, CG 5TH AF NAGOYA JAPAN, CG FEAMCOM FUCHU
JAPAN, COMNAVFE TOKYO JAPAN, CG GOC BOCF KURE JAPAN, CG
1808TH AACS WING TOKYO JAPAN, CG 2143D AIR WEA WG TOKYO
JAPAN, WVVV ALL SHIPS AT SEA, CO ITAMI AFB JAPAN, OIC 5th
AF WEA STN NAGOYA JAPAN,

INFO : CHF KMAG SEOUL KOREA, CO BOFU AFB JAPAN, CG 1503D ATW
MATS HANEDA AFB JAPAN

NR : 300940 Z

Tropical Forecast Number 4 for Tropical Typhoon Kitty.
Warning for Bonin Islands, Nanpo Shoto. Alert for Southern
Honshu between 132 east to 141 east. All clear for Iwo Jima.
Advisory all others.

Tropical Typhoon Kitty centered 425 miles southeast from
Tokyo at 301600 K in vicinity 29.3 north 143.7 east with maximum
winds near center 120 knots reported by reconnaissance aircraft,
moving 290 degs at 12 knots.

Kitty forecast to continue moving 290 degs at 12 knots for
next 12 hours then 320 degs at 10 knots for 6 hours then 350 degs at
at 10 knots and be centered 220 miles south of Tokyo at 311600 K
in vicinity 31.8 north 140.0 east with max winds near center 110
knots.

Advise agencies concerned to take necessary precautions
against destructive winds, heavy rains, floods, heavy seas and
surf through the alerted areas in preparation of Kitty app-
roaching Honshu Wednesday night and all day Thursday. Air Force
plans morning reconnaissance 31 August.

05400

(over)
EMERGENCY
UNCLASSIFIED

EMERGENCY

UNCLASSIFIED
EMERGENCY

FROM : CO HANEDA AFB NR : 300940 Z 30 AUG 49 CONT'D



NO SIG

DISTRIBUTION : SPECIAL

05400

EMERGENCY
UNCLASSIFIED

-2-

TOO : 300940 Z
MCN : AUD 103/30

✓
GENERAL HEADQUARTERS, FAR EAST COMMAND
ADJUTANT GENERAL'S OFFICE
RADIO AND CABLE CENTER

1700
EFF
8C

INCOMING MESSAGE

GGG

UNCLASSIFIED
COURIER

30 Aug 49

FROM : CG EIGHTH ARMY YOKO JAPAN

TO : SCAP TOKYO JAPAN

NR : D 80325 YO

Request Chinese Representative for IX Corps Provost Court to meet at Niigata City, Niigata Prefecture on or about 8 or 9 September 49 for trial of Gi Shi Shun alleged Chinese National residing in Niigata City. 4 specifications involving violations of economic laws and blackmarketing totalling 600,000 yen. Not confined.

NO SIG

ACTION : LEGAL

INFORMATION : COMMANDER IN CHIEF, CHIEF OF STAFF, G-2, AG,
GOVT, DIPLOMATIC

05206

COURIER
UNCLASSIFIED

TOO : 30 NPT
MCN : NONE

✓
GENERAL HEADQUARTERS, FAR EAST COM
ADJUTANT GENERAL'S OFFICE
RADIO AND CABLE CENTER

1530
EFF
ldh

INCOMING MESSAGE

EMERGENCY

SM

UNCLASSIFIED
EMERGENCY

30 Aug 49

Foot

FROM : CO 20-5 AWS DET HANEDA AFB JAPAN

TO : CINCPAC TOKYO JAPAN, CG FEAF TOKYO JAPAN, CG EIGHTH ARMY
YOKOHAMA JAPAN, CG 5TH AF NAGOYA JAPAN, CG FEAMCOM
FUCHU JAPAN, COMNAVFE TOKYO JAPAN, CG 1503D ATW MATS
HANEDA AFB JAPAN, CO 1808TH AACS WING TOKYO JAPAN, CO
2143D AIR WEA WG TOKYO JAPAN, CG 5TH AF WEA STN NAGOYA
JAPAN, WVWV JAPAN

INFO : CHIEF KMAG KOREA, CG GOC BCOP JAPAN, CO BCPU AFB JAPAN,
CO ITAMI AFB JAPAN

NR : 300215 Z

Tropical Forecast Number 3 for Tropical Storm Kitty.
Warning for Iwo Jima, Bonins, Nanpo Shoto. Alert for southern
coast of Honshu between 135 east and 141 east. Advisory all
others. Tropical Storm Kitty located 575 miles southeast of
Tokyo at 301000 K in vicinity 29.2 north 145.1 east with
maximum winds near center 55 knots, moving 290 degs 12 knots.
Kitty forecast to move 290 degs 12 knots for next 18 hours
then 320 degs 10 knots for the next 6 hours and be located
270 miles south of Tokyo at 311000 K in vicinity 31.2 north
140.4 east with maximum winds near center 55 knots. Air
Force has one aircraft in storm area this afternoon.

NO SIG

DISTRIBUTION : SPECIAL

05194

EMERGENCY
UNCLASSIFIED

TOO : 300215 Z
MCN : AUA 39/30

EMERGENCY

✓
GENERAL HEADQUARTERS, FAR EAST COMMAND
ADJUTANT GENERAL'S OFFICE
RADIO AND CABLE CENTER

JA
trm

INCOMING MESSAGE

'EMERGENCY'

UNCLASSIFIED
EMERGENCY

JA

30 Aug 49

FROM : CO 20-5 AWS DET HANEDA AFB JAPAN

TO : CINCPAC TOKYO JAPAN, CG FEAF TOKYO JAPAN, CG EIGHTH
ARMY YOKOHAMA JAPAN, CG 5TH AF NAGOYA JAPAN, CG
FEAMCOM FUCHU JAPAN, COMNAVPAC TOKYO JAPAN, CG 1503D
ATW MATS TOKYO JAPAN, CG 1808TH AACS WG TOKYO JAPAN,
CG 2143D AIR WEA WG TOKYO JAPAN, CG 5TH W STN NAGOYA
JAPAN, WVWV (ALL SHIPS AT SEA)

INFO : CHF KMAG SEOUL KOREA, CGC BC OF KURE JAPAN, CG BOFU
AFB BOFU JAPAN, CG ITAMI AFB JAPAN

NR : 292120 Z

Tropical Forecast Number 2 on Tropical Storm Kitty.
Warning for Iwo Jima, Bonins, Nanpo Shoto. Alert for Southern
Coast of Honshu between 135 east and 141 east. Advisory all
others. Tropical Storm Kitty located 540 miles southeast
from Tokyo at 300400 K in vicinity 28.8 north 146.4 east
with max winds near center 55 knots, moving 290 degs at 12
knots. Kitty forecast to continue moving 290 degs next 24
hours and be located 50 miles east of Torishima and 320
miles south south east from Tokyo at 310400 K in vicinity
30.4 north 141.4 east with max winds near center of 55 knots.
Third Emergency Rescue Squadron has 1 aircraft in storm
area for morning fix, 514th Recon Sq plans afternoon fix.

NO SIG.

DISTRIBUTION : SPECIAL

05062

EMERGENCY
UNCLASSIFIED

TOO : 292120 Z
MCN : AUD 95/29

'EMERGENCY'

Misc.

GENERAL HEADQUARTERS, FAR EAST COM. AND
ADJUTANT GENERAL'S OFFICE
RADIO AND CABLE CENTER

TBB
bjf

INCOMING MESSAGE

Restricted
ROUTINE

TBB

28 Aug 49

FROM : DA WASH DC
TO : SCAP (USPOLAD) TOKYO JAPAN
INFO : CSUSA WASH DC
NR : 272156 Z (PASSES FROM STATE DTG 271632 Z) (STATE SVC
85 AUG 27, NOON SIGNED ACHESON) (FOLLOWING RELAY FROM
PEIPING TO DEPT AS 1380 AUG 18, 9 AM REPEATED TOKYO)

Re DEPTTEL 507 July 30.

Communicated substance authorized information interested parties as directed note San Yang Company has supplied office with copies document from Manchurian authorities authorizing them trade in Manchurian products, that direct contacts between two sides still unestablished. Consulate unable in existing circumstances determine ability San Yang meet contractual obligations which still nonexistent excepting in barest outline. Believe that as indicated 3d Paragraph DEPTTEL 265 May 8 in principle details of commercial deals had best be worked out between concerned parties without intervention consulated. Ref tel July 30 states Department is prepared to suggest SCAP alternative means contact and negotiate. Consulate, of course, prepared endeavor clarify applicants status, or seriousness applicants offer, in any particular respect desired by SCAP for interested business contact Japan, but believe that in case San Yang matter had advanced sufficiently to warrant direct contact and negotiations with responsibility for commercial contracts to be that of two parties directly concerned.

Tokyo Representative is Li Tse-Min (GOW IPX IEN) General Manager Peiping office San Yang Company, address care Tajeoya Madaeutyo Made, Yamaman Products Company, Tokio-To, Daita-Ku, Arai juku 2-1621.

(over)
ROUTINE

04737

Paraphrase not required. Handle as correspondence of classification carried hereon per paragraphs 51i and 60a, AR 380-5.

Handwritten notes and signatures in left margin

Restricted
ROUTINE

FROM : DA WASH DC NR : 272156 Z 28 AUG 49 CONT'D

San Yang now offers for export to Japan from either Yingkow or Tientsin products listed following telegram Peiping numbered series. Tilmufhuzsn (as received) Ltd. Various brand and grades according demand. States can obtain documents from North China Trading Company similar epic (as received) those obtained North East Export Company. Plans purchase articles Japan for import PHI (as received) with proceeds deal and desires negotiation on basis CIF. Yokohama and Tientsin prices respectively for exports and imports. Proposes ship by any means available.

Please instruct.

Sent Department, repeated USPOLAD Tokyo. Clubb.

NO SIG

ACTION : DIPLOMATIC

INFORMATION : COMMANDER IN CHIEF, CHIEF OF STAFF, G-2, AG, GOVT,
ECON & SCI



04737

ROUTINE
Restricted
-2-

TOO : 272156 Z
MCN : 51485

GENERAL HEADQUARTERS, FAR EAST COMMAND
ADJUTANT GENERAL'S OFFICE
RADIO AND CABLE CENTER

WAG
rea

INCOMING MESSAGE

Confidential
ROUTINE

TBB
27 AUG 49

FROM : DA WASH DC

TO : SCAP TOKYO JAPAN

NR : 261515 Z (PASSES FOR MSG DTG 252310 Z TO SCAP TOKYO
JAPAN FOR INFO) (REF NBR CCF-1020 FOR ACTION HQ DEPT
OF THE ARMY ASSISTANT SECRETARY OF THE ARMY WASH DC
FROM CHARNIAK OMGUS PIO FRANKFURT SGD SETTEL)

REUR WX 93021, 17 Aug 1949 paragraph 3.

Proposed press release: The first post-war commercial agreement has been concluded between the 3 western zones of Germany and Japan. The terms of the agreement have been approved by the Supreme Commander Allied Powers, Tokyo, and the Joint Export Import Agency, the Military Government Organization supervising the foreign trade of Western Germany, following negotiations extending over some months between JEXIMA, the Department of the Army and the SCAP. The agreement was signed yesterday in Frankfurt by the Representatives of the 3 Military Governors and has been forwarded to Tokyo for signature by SCAP.

Under the agreement Japan and western Germany expect to exchange goods amounting to \$12,000,000 each way. The principal commodities to be exported by Japan are silk, non-ferrous metals, textile machinery and certain agricultural products. Germany will supply Japan with machinery and vehicles, iron and steel products, electrical equipment, textiles, chemicals, precision instruments and optics, fertilizers, and consumer goods.

Payment will be effected through offset accounts maintained by the Chase National bank of New York (Tokyo Branch) and the bank Deutscherlaender. Outstanding balances in the trade accounts will be calculated on the 31 December of each year and will be settled in US dollars.

Exports from Western Germany to Japan since the beginning of the occupation have been negligible. From Japan, Western Germany received industrial imports worth \$2,400 in 1947 and \$3,531,394 worth of industrial and food imports in 1948.

(over)
ROUTINE

04370

Confidential

Handling and transmission of literal plain text of this message as correspondence of the same classification has been authorized by the War Department in accordance with the provisions of paragraphs 16-C, 18-E, 53-A, 53-D (1) (2) (3), and 60-A (1) (2) (3) (4), AR 380-5, 6 March 1946. COPY No.

16-50735-1 GPO O-795839

Confidential
ROUTINE

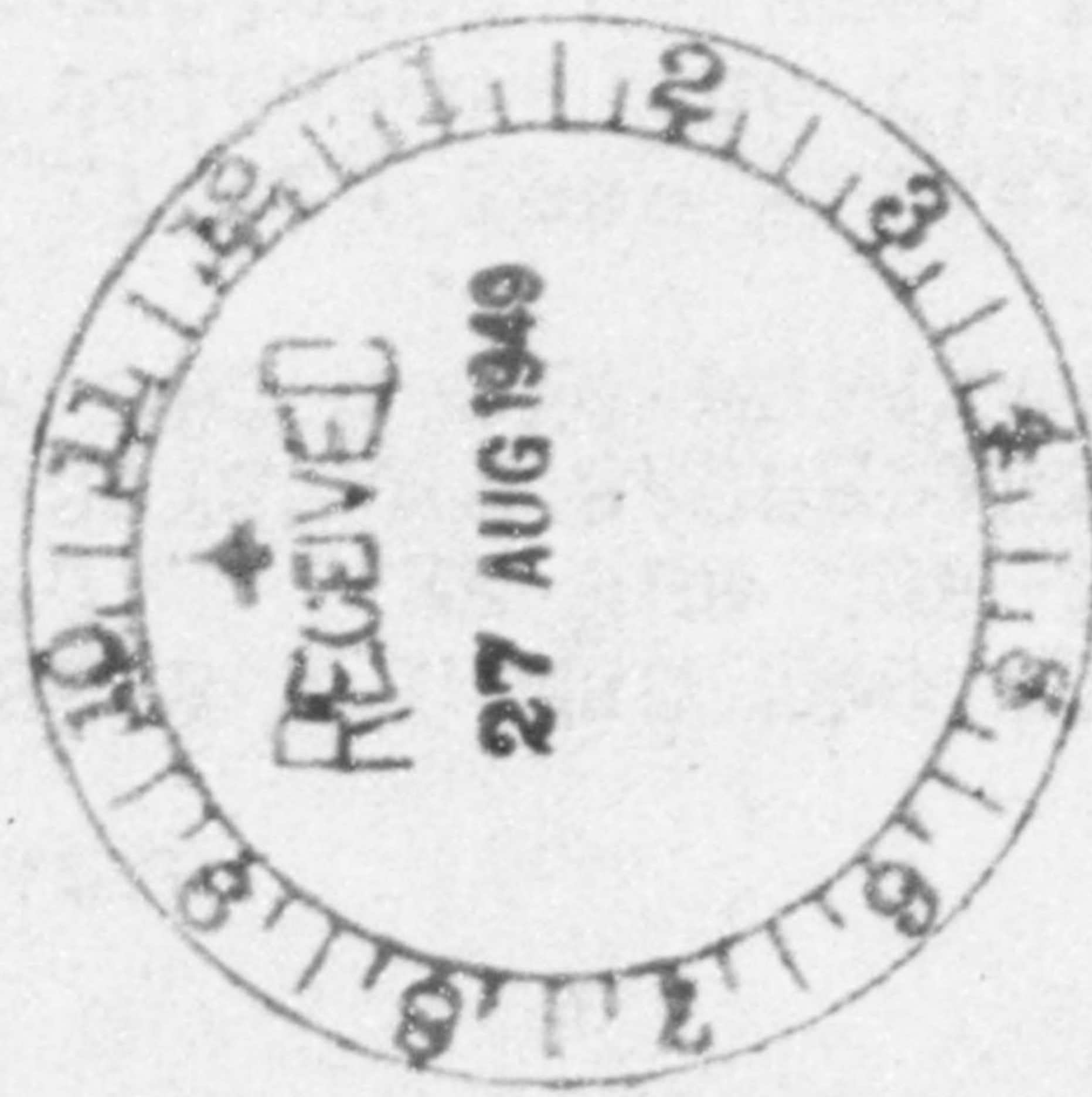
FROM : DA WASH DC NR : 261515 Z 27 AUG 49 CONT'D

Date of release. This is for simultaneous release in Frankfurt and Tokyo at 1200 Z hours 2 September 1949. Please confirm.

NO SIG

ACTION : SECY GEN STAFF

INFORMATION : COMMANDER IN CHIEF, CHIEF OF STAFF, GOVT,
ECON & SCI



04370

ROUTINE

TOO : 261515 Z
MCN : 51432

-2-

Confidential

✓
GENERAL HEADQUARTERS, FAR EAST COM~~AND~~
ADJUTANT GENERAL'S OFFICE
RADIO AND CABLE CENTER

0835

EFF
fc

F

~~76~~

INCOMING MESSAGE

UNCLASSIFIED
COURIER

EFF

26 Aug 49

PROM: CG EIGHTH ARMY YOKOHAMA JAPAN

TO : SCAP TOKYO JAPAN

NR : D 80321 YO

Hq 24th Inf Div requests appointment of Mister Loh Tsi Yee, member of Nagasaki Branch of Chinese Mission, to serve as Chinese representative on Occupation Courts in its area of responsibility. Hq 24th Inf Div reports that regularly appointed member has been assigned special mission and has not been available for occupation court duty for past 2 weeks.

NO SIG

ACTION : LEGAL

INFORMATION : COMMANDER IN CHIEF, CHIEF OF STAFF, G-2, AG,
GOVT, DIPLOMATIC

04214

COURIER
UNCLASSIFIED

TOO: 252235 Z
MCN: NONE

*At
Rizzo
Stange
Par & Pol
Air Serv*

GENERAL HEADQUARTERS, FAR EAST COMMAND
ADJUTANT GENERAL'S OFFICE
RADIO AND CABLE CENTER

0835 F

EFF
web

INCOMING MESSAGE

Confidential WAG
COURIER

26 Aug 49

FROM : CG EIGHTH ARMY YOKOHAMA JAPAN

TO : SCAP TOKYO JAPAN

NR : E 36775 YO

Request appointment and date of availability of Chinese representative for occupation court to meet in Kure for trial of Kyo Shin Ou of Taiwan-Sho, Takao-Ken, Hosan-Ku, Rinen-Kyo, Kyo Shiki son Number 14, Cho Chi of Taiwan-Sho, Heito-Shi, Kita-Ku, Hokusei-Ko, Number 9, Ko Shin Tei of Taiwan-Sho, Takao-Ken, Hosan-Ku, Riwen-Kyo, Kyoseki-son Number 65, Riku Mei So of Taiwan-Sho, Karea-Ken, Yoshino-Go, Jinri-son 6 Rin, Kyo Sei Chi of Taiwan-Sho, Boko-Ken, Shisu-Kyo, Chikuwen-son 15 Rin, and Chin Ju Rin of Taiwan-Sho, Takao-Shi, Hojuri, 5 Rin. All charged with illegal entry and illegal importation of 9 tons of sugar and 109 lbs of camphor. All confined in BCOF detention barracks, Kure since 15 July 49.

NO SIG

ACTION : LEGAL

INFORMATION : COMMANDER IN CHIEF, CHIEF OF STAFF, G-1. G-2.
AG. GOVT. DIPLOMATIC

04209

COURIER

TOO : 26 NPT
MCN : NONE

Confidential

Handling and transmission of literal plain text of this message as correspondence of the same classification has been authorized by the War Department in accordance with the provisions of paragraphs 16-C, 18-E, 53-A, 53-D (1) (2) (3), and 60-A (1) (2) (3) (4), AR 380-5, 6 March 1946.

COPY No.

16-50735-1 GPO O-795839

*Ex 9
Rizzo
Hauge
Par Pol
Civ Serv*

✓
GENERAL HEADQUARTERS, FAR EAST COMM
ADJUTANT GENERAL'S OFFICE
RADIO AND CABLE CENTER

1315

EFF
DPW

INCOMING MESSAGE

UNCLASSIFIED
ROUTINE

GGG

22 Aug 49

FROM : AMEMB MANILA

TO : SCAP (ATTN CAPT CHARLES E HEARTSILL) TOKYO JAPAN

NR : 220740 Z (61 OF THE 2D COND)

World Seminar Gp request following accommodations:
Doubles Mr & Mrs Denny, Mr & Mrs Decker, Mr & Mrs White,
formerly Poppy Canon, Mr & Mrs Givens;
Singles requested for Albert, Harnhardt, Briggs, Grimms,
Herningway, Hottel, Emeny, Lord, Kvam, Sampson, Strauss,
Stakowski, Welsh, Williams, Ritter, Hutson, Cowanof, Fan
American, Snavely, Wallam.

All have permits to enter Japan except Williams, Ritter,
Stakowski, and Mrs White, formerly Poppy Canon.

Urgently request permission validate passports above
mentioned before Friday, Aug 26.

COWEN

ACTION : CIV I & E

INFORMATION : COMMANDER IN CHIEF, CHIEF OF STAFF, G-1, G-2,
AG

ADDED DIST : PUBLIC INFORMATION, GOVT, DIPLOMATIC (23 Aug 49)

02649

ROUTINE
UNCLASSIFIED

TOO : 220740 Z
MCN : AUA 38/22

✓
GENERAL HEADQUARTERS, FAR EAST COMMA
ADJUTANT GENERAL'S OFFICE
RADIO AND CABLE CENTER

RB 330 has copy
TBB
Hean

INCOMING MESSAGE

TBB

Restricted
ROUTINE

20 Aug 49

FROM: DA WASH DC

TO : SCAP (FOR POLAD) TOKYO JAPAN

INFO: CSUSA

NR : 200725 Z (PASSES FROM STATE DEPT DTG 200014 Z) (STATE SERIAL 411 AUG 19, 7 PM SIGNED ACHESON)

In reply to questions of newspapermen re reports Jap Govt with SCAP support is planning early resumption semi dipl re-- lations Dept press officer read fol statement which was made for informational purposes and not issued as a formal press release.

"A basic objective of the occupation in Jap is to foster among the Jap Govt and people a respect for rights of other nations and govts. It is clear to the US Govt that by facilitating the progressive resumption by Jap of internatl relationships mutually beneficial to other peoples as well as to the Jap people this objective can be materially furthered. Such internatl relationships require goodwill on both sides. Relations between nations are a two way street. Because Jap is a defeated country under mil occupation and because the FEC is the internatl body which formulates the policies principles and standards in conformity with which the fulfillment by Jap of its obligations under the terms of surrender may be accomplished, expression of general willingness to enter into even limited relationship with Jap tends to await the leadership of that body.

'It was against this background that the US proposed to the FEC that it take positive action recognizing that SCAP subject to his discretion and continued control, has the auth to permit Jap to participate in internatl relationships such as conventions, mtgs, concular arrangements or other bilateral accords as Jap may be invited to participate in and as SCAP

(over)

02471

ROUTINE

Restricted

Handling and transmission of literal plain text of this message as correspondence of the same classification has been authorized by the War Department in accordance with the provisions of paragraphs 16-C, 18-E, 53-A, 53-D (1) (2) (3), and 60-A (1) (2) (3) (4), AR 380-5, 6 March 1946. COPY No.

16-50733-1 GPO O-795839