

104
N6 S72
copy 1

Souvenir Views of
New Haven and
Yale
University

F. 10⁺
N6 S72

NEW HAVEN



NEW HAVEN, situated on the Connecticut shore of Long Island Sound at its widest point, enjoys the peculiar distinction of being both a great commercial city and at the same time a powerful educational center. While it is the headquarters of immense manufacturing industries, including hardware, carriages, arms and wire, giving employment to nearly ten thousand people, it is widest known as the seat of the famous Yale University.

New Haven was settled in 1637, and its importance as a settlement practically dates from the time when Yale College, founded in Saybrook in 1700, and named after its first benefactor, Elihu Yale, was moved here in 1716.

New Haven has played a rare part in American political as well as industrial history. It was here that the regicides, Goffe, Whalley and Dixwell hid during the Colonial times, here also were located Forts Hale and Wooster of Revolutionary fame, and here lived Roger Sherman, signer of the Declaration of Independence, and later Noah Webster, Eli Whitney, Joseph E. Sheffield, founder of Sheffield Scientific School, and many other famous Americans.

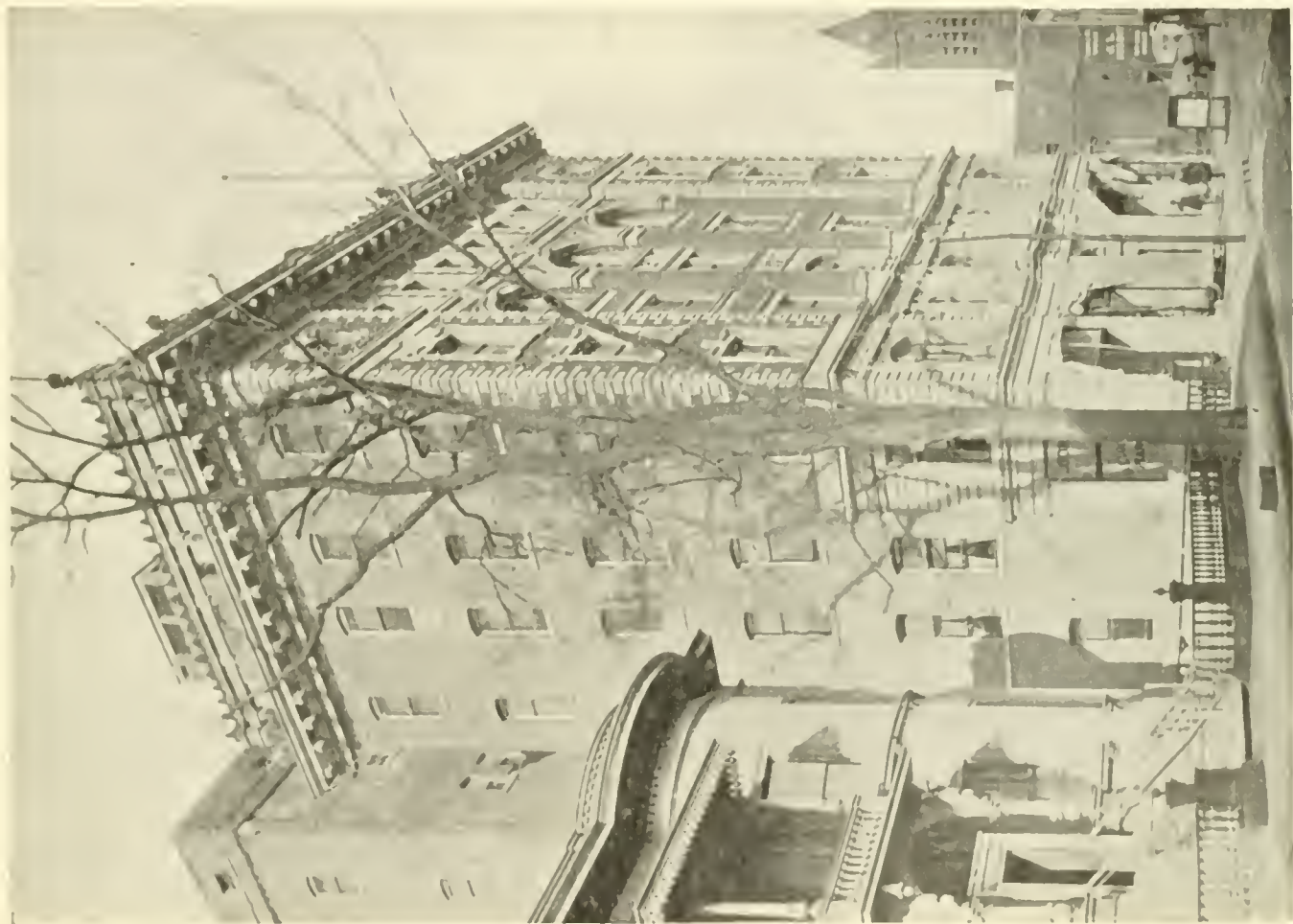
New Haven now has a population of over one hundred and twenty-five thousand. Its park system is a wonder and delight to visitors and to citizens of the city. The central and older portion of New Haven is laid out in a regular square, surrounding the Public Green of sixteen acres on which stand the three oldest churches, known as "The Three Churches on the Green." The beauty of the elms planted about this square and along the principal streets has caused New Haven to be familiarly known as "The Elm City." Delightful "East Rock Park," with its incomparable drives and magnificent water views, is a splendid example of modern excellence in park development.

At Savin Rock is one of the most famous places of amusement in New England. "The White City," built at an expense of over one hundred and fifty thousand dollars, and visited during the summer season by many thousands of people.

Published by L. H. NELSON COMPANY, Portland, Me.
Publishers of Nelson's International Series of View Books



CHAPEL STREET, SHOWING THE MALLEY BUILDING





THE CITY HALL AND COURT HOUSE



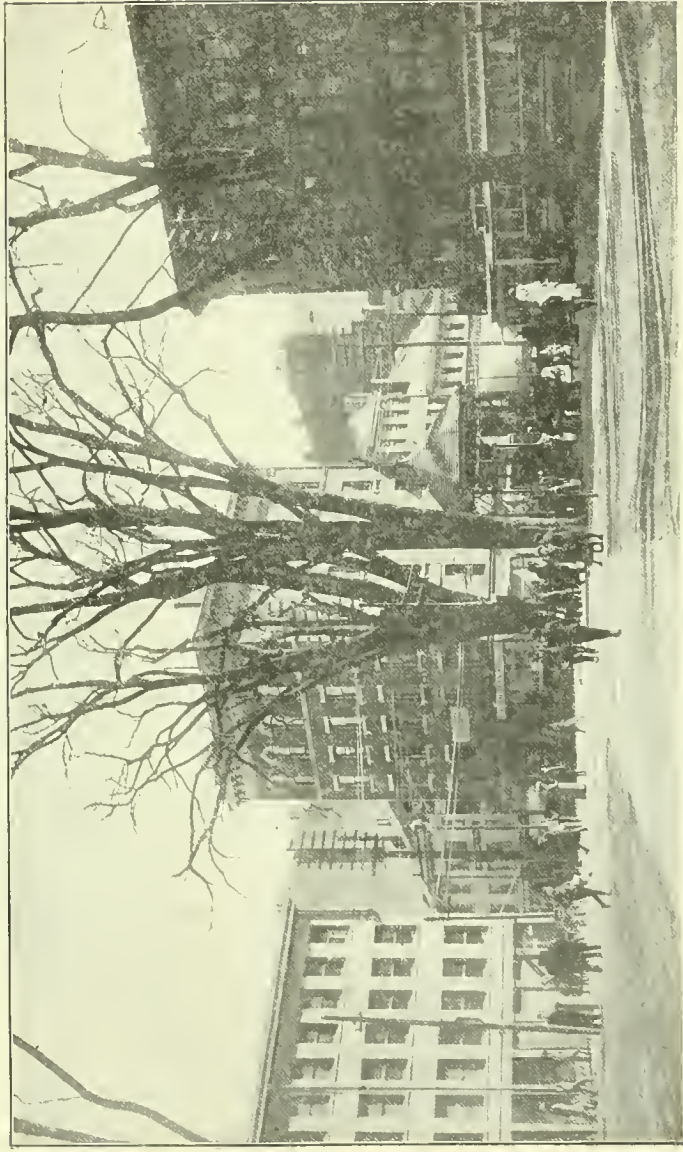
THE PUBLIC LIBRARY



THREE CHURCHES ON THE GREEN



TRINITY CHURCH



CORNER CHURCH AND CHAPEL STREETS



A GLIMPSE OF HILLHOUSE AVENUE



BOARDMAN MANUAL TRAINING SCHOOL



THE SOLDIERS' AND SAILORS' MONUMENT



PHELPS GATEWAY—YALE UNIVERSITY



COLLEGE STREET
Showing Yale University Buildings.



OSBORN HALL—YALE UNIVERSITY



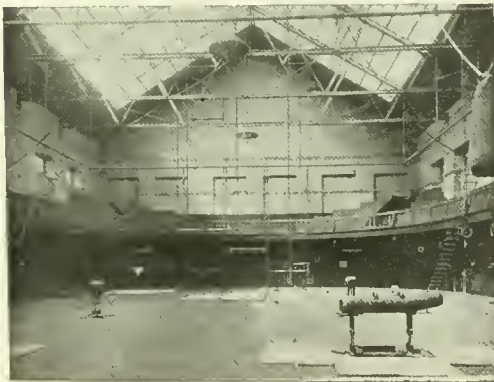
HATTELL CHAPEL—YALE UNIVERSITY



Yale Campus—Rear View



Yale Library—New



Yale Gymnasium—Interior



Yale Boathouse



St. Anthony Hall



Alumni Hall



Yale Campus Rear



Yale Gymnasium



Old Yale Library



Yale Chapel



Yale Art School



Welch Hall



View along the Campus



White Hall



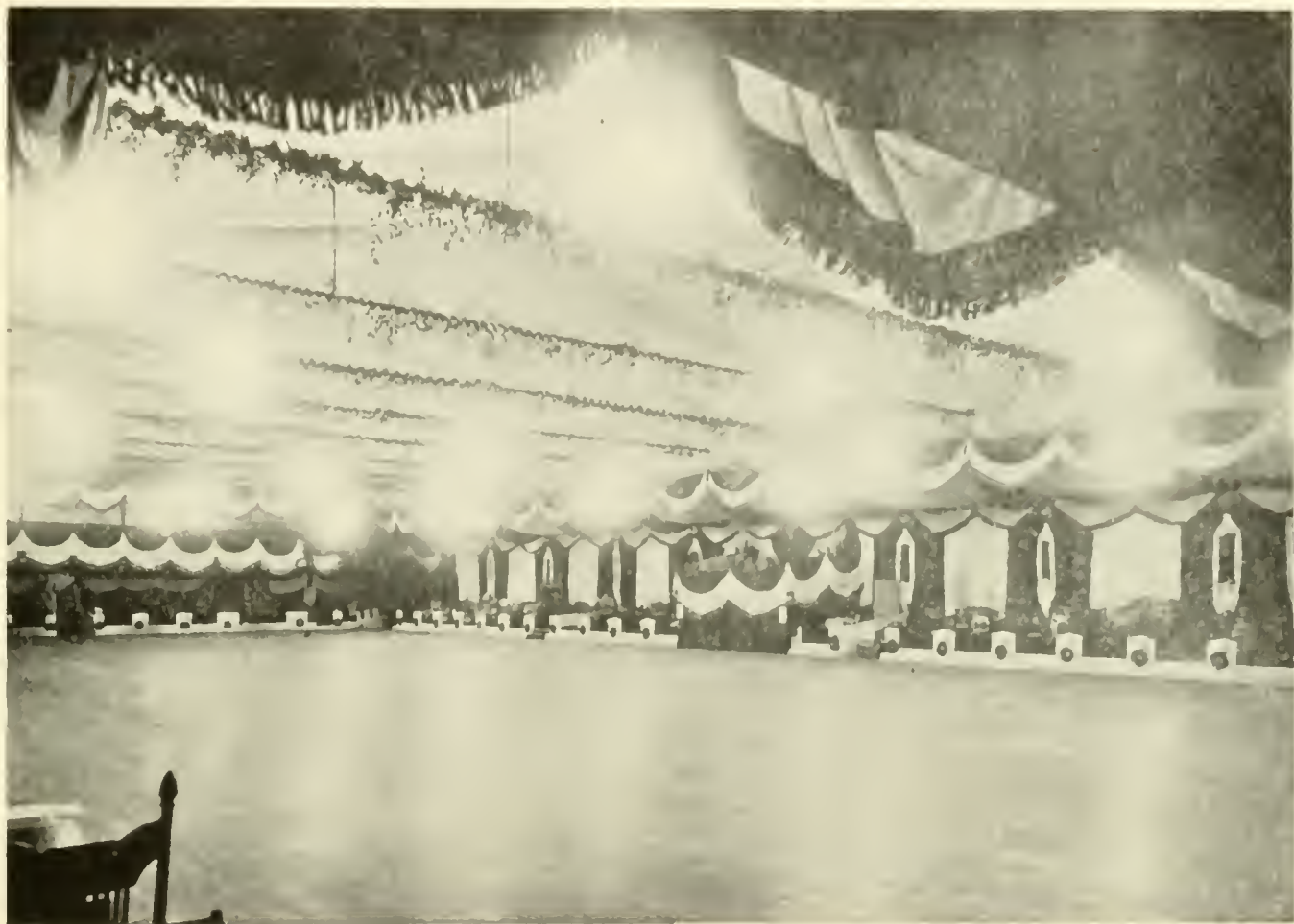
Pierson Hall



Looking toward Sheffield Building



WOOLSEY HALL AND NEW DINING HALL—YALE UNIVERSITY



INTERIOR SECOND REGIMENT ARMORY
Ready for Yale Junior Prom.



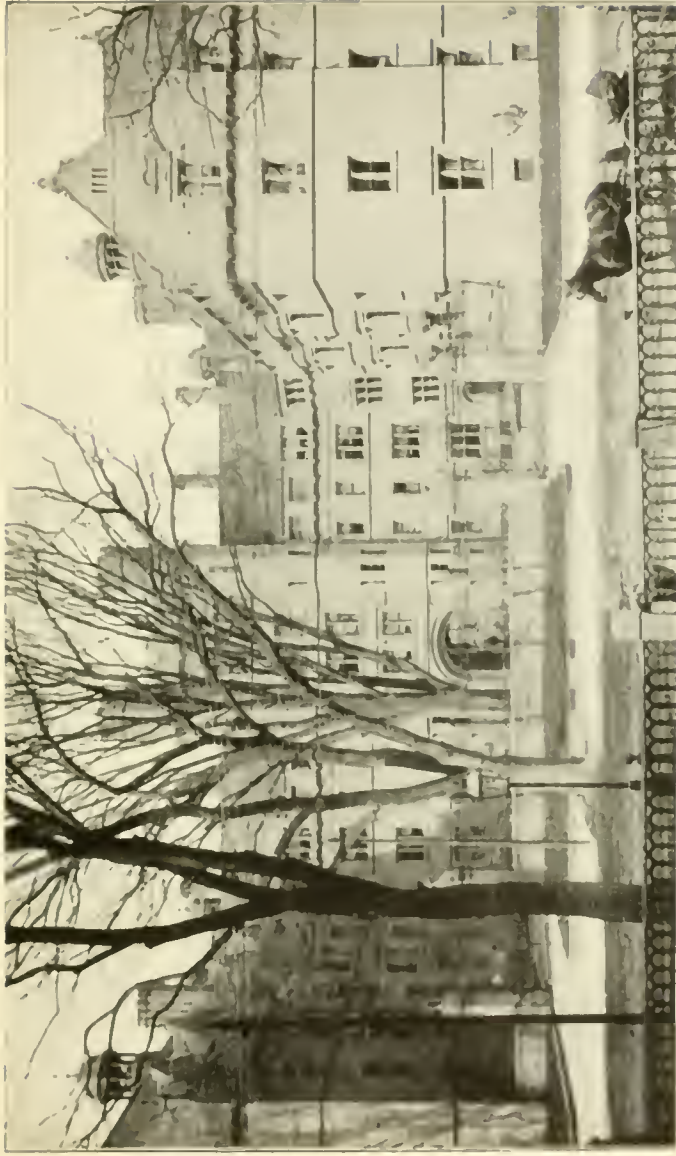
DWIGHT HALL—YALE UNIVERSITY



OLD SOUTH MIDDLE—YALE UNIVERSITY



LAW SCHOOL—YALE UNIVERSITY



VANDERBILT HALL - YALE UNIVERSITY



WINCHESTER HALL - YALE UNIVERSITY



EAST ROCK WITH WEST ROCK IN THE DISTANCE
Showing Soldiers' Monument.



VIEW OF LAKE WHITNEY



SAVIN ROCK THEATRE AND FOUNTAIN



LIGHT AT LIGHTHOUSE POINT

One copy del. to Cat. Div.

DEC 16 19'

LIBRARY OF CONGRESS



0 014 113 193 A

