

44811850

ID: 88072888

F
382
J76
J64
2000
V.4



U.S. Department of the Interior
Bureau of Land Management

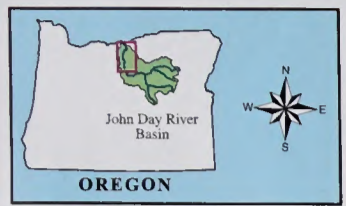
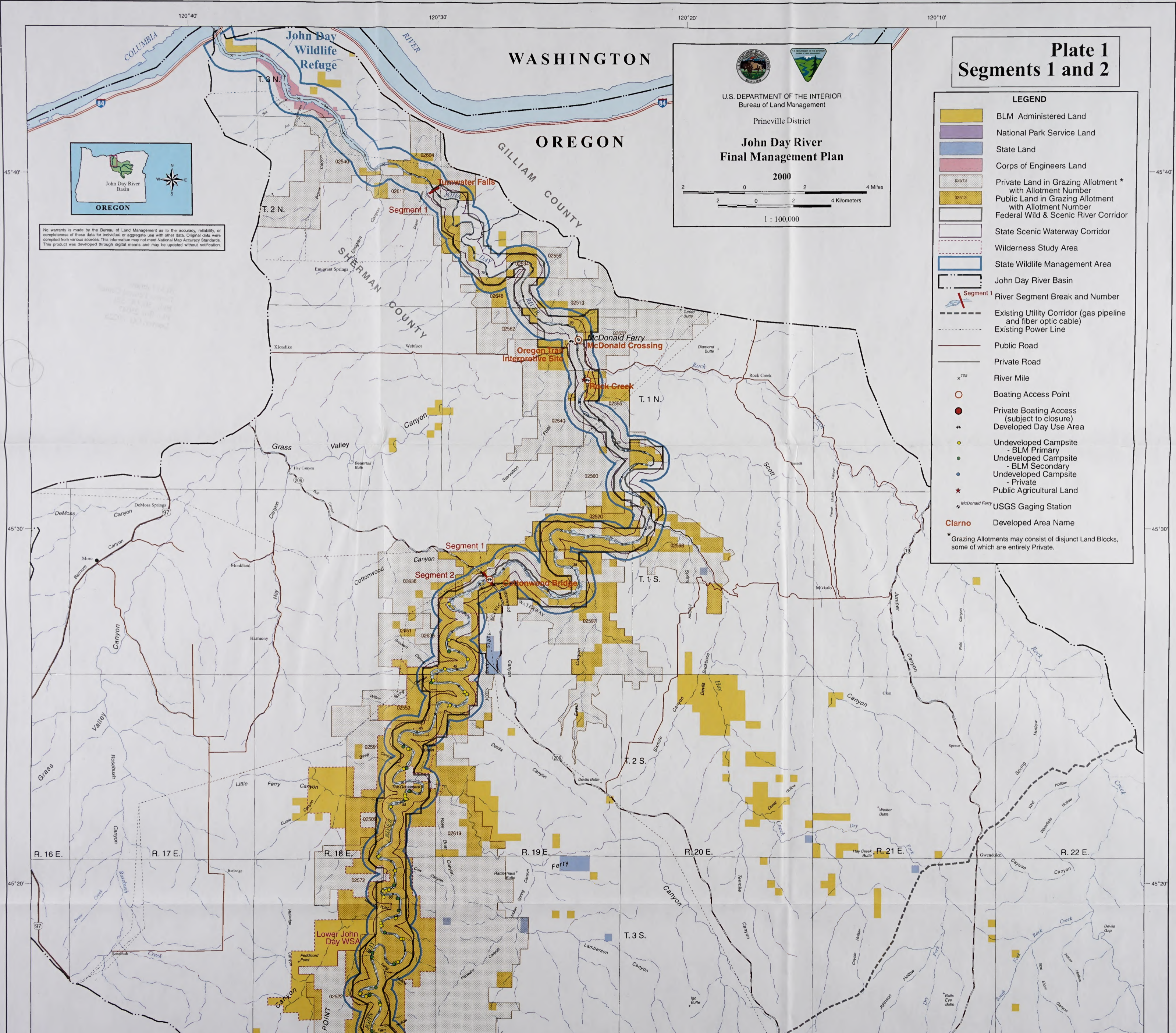
Prineville District Office
3050 NE 3rd Street
Prineville, Oregon 97754

June 2000



John Day River Proposed Management Plan, Two Rivers and John Day Resource Management Plan Amendments and Final Environmental Impact Statement

BLM Library
Denver Federal Center
Bldg. 50, OC-521
P.O. Box 25047
Denver, CO 80225



No warranty is made by the Bureau of Land Management as to the accuracy, reliability, or completeness of these data for individual or aggregate use with other data. Original data were compiled from various sources. This information may not meet National Map Accuracy Standards. This product was developed through digital means and may be updated without notification.

U.S. DEPARTMENT OF THE INTERIOR
Bureau of Land Management
Prineville District

John Day River Final Management Plan

2000

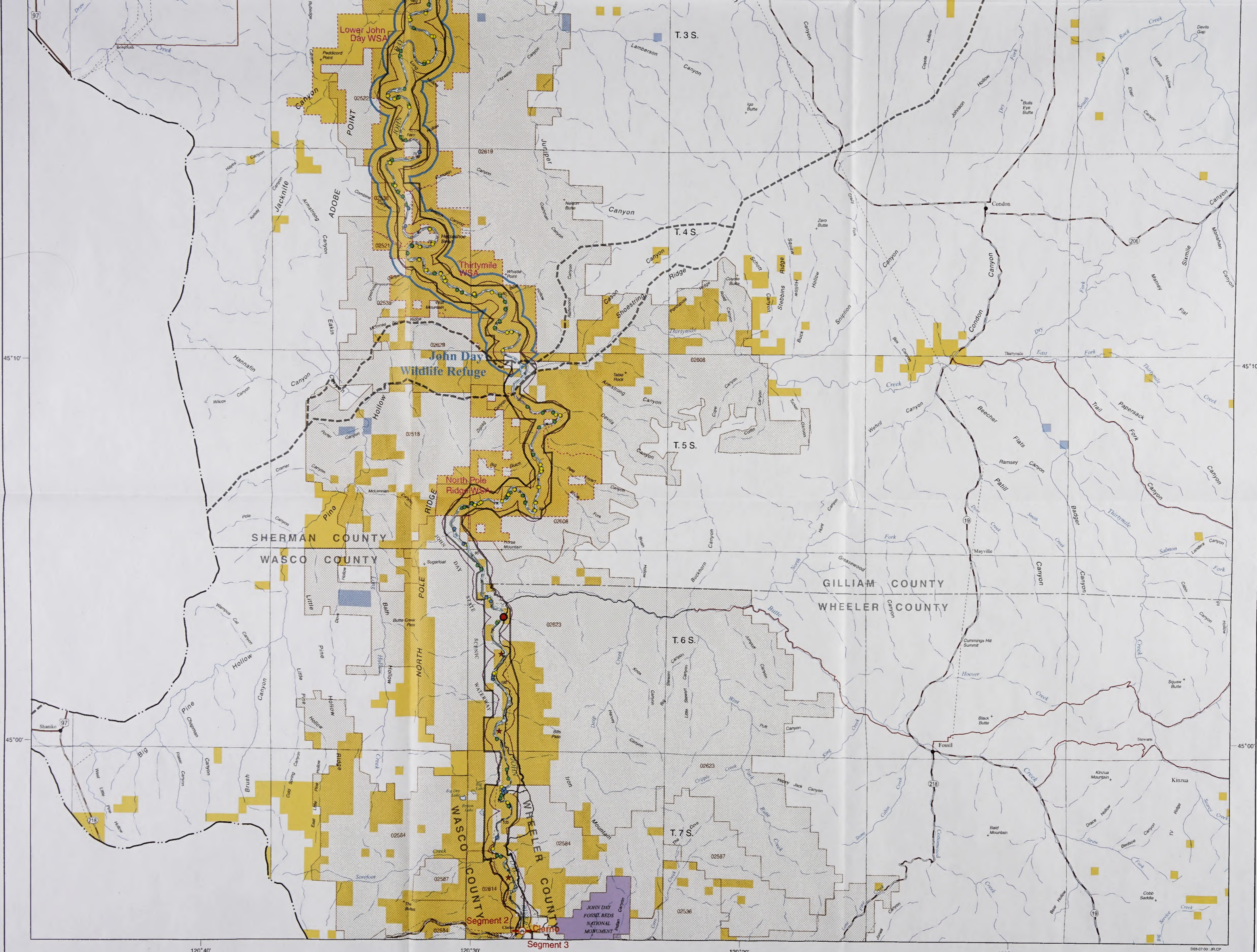
1 : 100,000

Plate 1 Segments 1 and 2

LEGEND

- BLM Administered Land
- National Park Service Land
- State Land
- Corps of Engineers Land
- Private Land in Grazing Allotment * with Allotment Number
- Public Land in Grazing Allotment with Allotment Number
- Federal Wild & Scenic River Corridor
- State Scenic Waterway Corridor
- Wilderness Study Area
- State Wildlife Management Area
- John Day River Basin
- River Segment Break and Number
- Existing Utility Corridor (gas pipeline and fiber optic cable)
- Existing Power Line
- Public Road
- Private Road
- River Mile
- Boating Access Point
- Private Boating Access (subject to closure)
- Developed Day Use Area
- Undeveloped Campsite - BLM Primary
- Undeveloped Campsite - BLM Secondary
- Undeveloped Campsite - Private
- Public Agricultural Land
- USGS Gaging Station
- Developed Area Name

* Grazing Allotments may consist of disjunct Land Blocks, some of which are entirely Private.



120°40'

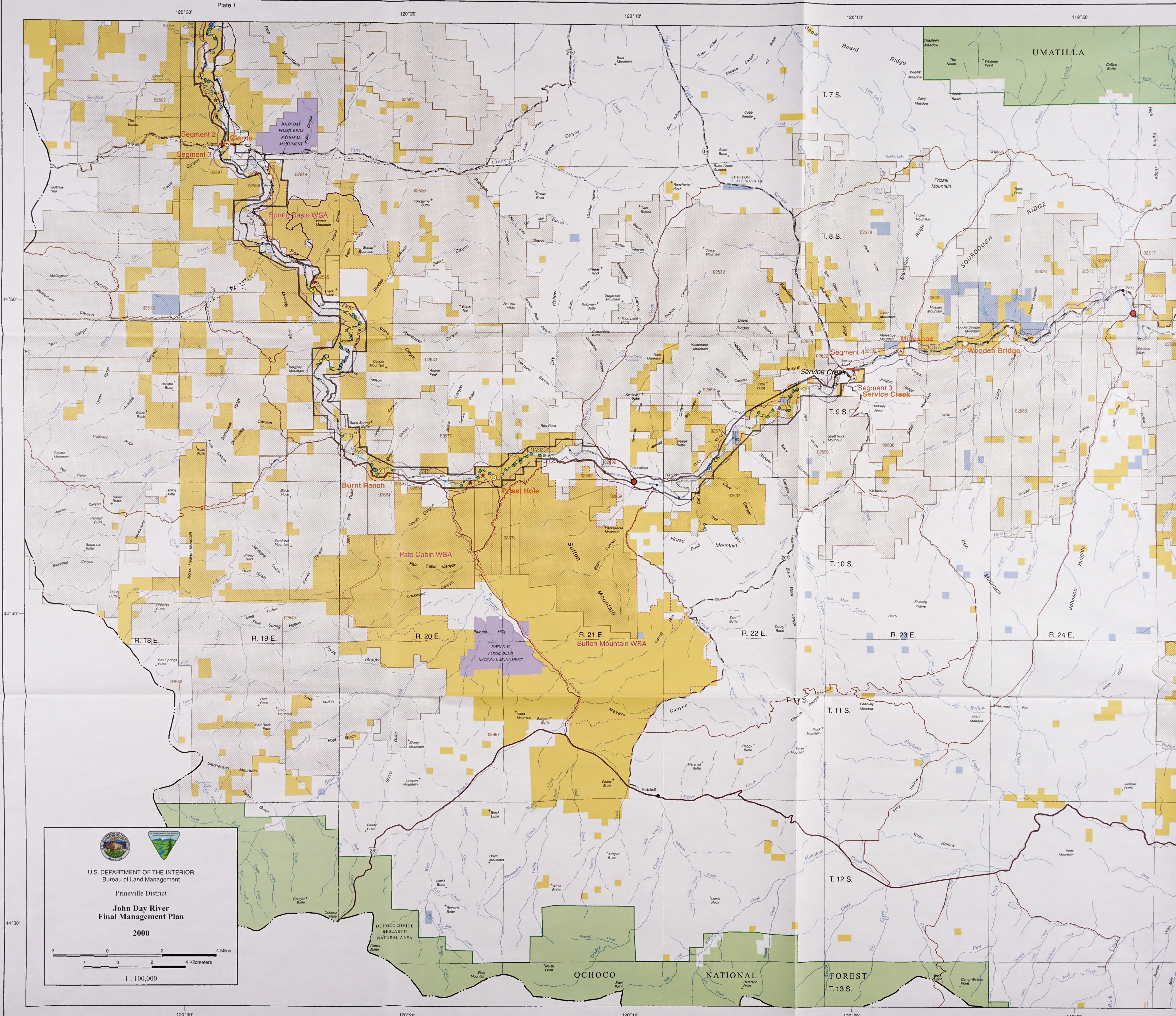
120°30'

Plate 2

120°20'

120°10'

009-07-00 - JR, CP



44°50'

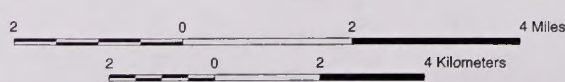
44°40'

44°30'

120°30' Plate 1 120°20' 120°10' 120°00' 119°50'

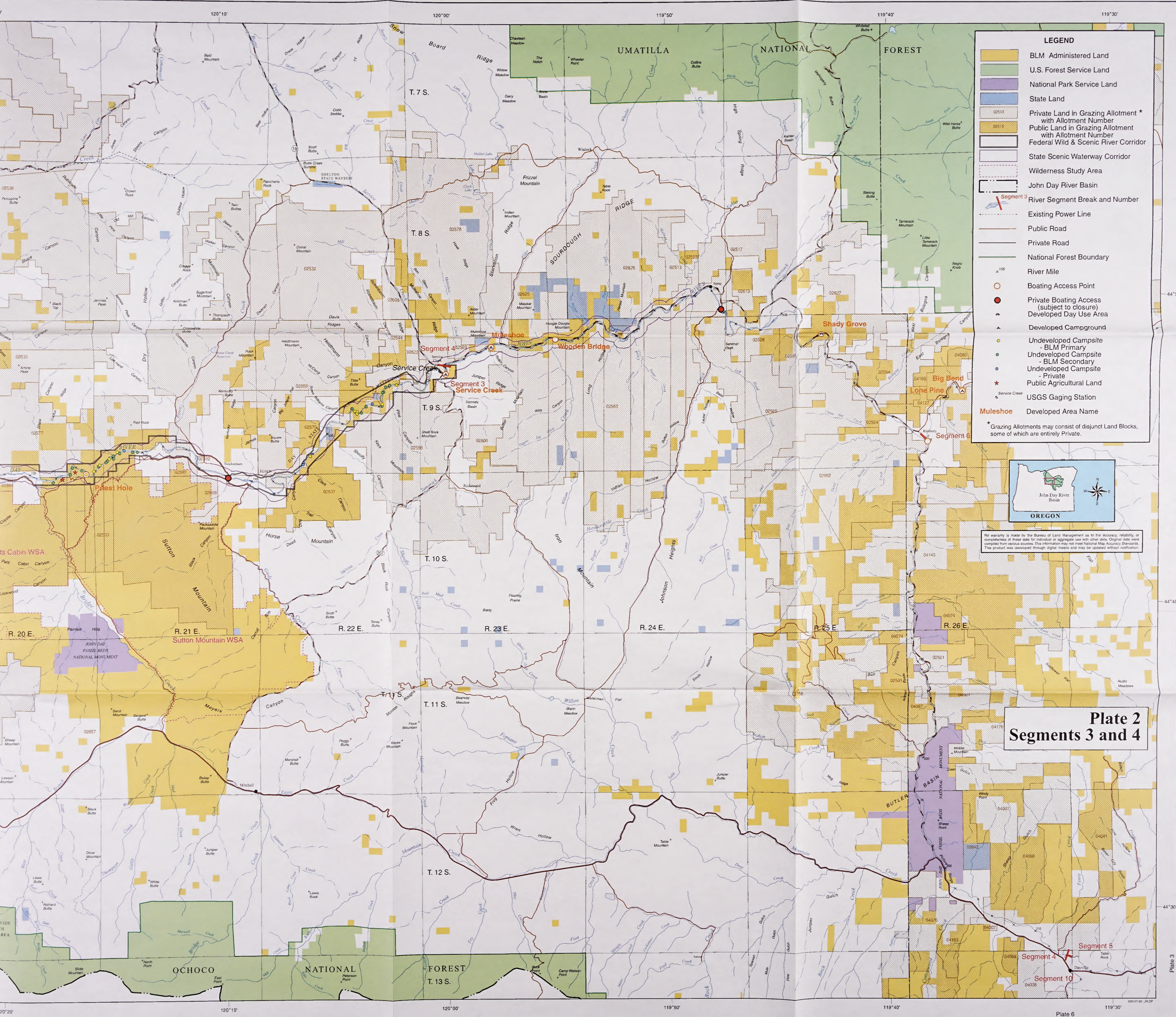


U.S. DEPARTMENT OF THE INTERIOR
Bureau of Land Management
Prineville District
**John Day River
Final Management Plan**
2000



1 : 100,000

120°30' 120°20' 120°10' 120°00' 119°50'



LEGEND

- BLM Administered Land
- U.S. Forest Service Land
- National Park Service Land
- State Land
- Private Land in Grazing Allotment * with Allotment Number
- Public Land in Grazing Allotment with Allotment Number
- Federal Wild & Scenic River Corridor
- State Scenic Waterway Corridor
- Wilderness Study Area
- John Day River Basin
- Segment 3
- River Segment Break and Number
- Existing Power Line
- Public Road
- Private Road
- National Forest Boundary
- River Mile
- Boating Access Point
- Private Boating Access (subject to closure)
- Developed Day Use Area
- Developed Campground
- Undeveloped Campsite - BLM Primary
- Undeveloped Campsite - BLM Secondary
- Undeveloped Campsite - Private
- Public Agricultural Land
- USGS Gaging Station
- Muleshoe Developed Area Name

* Grazing Allotments may consist of disjoint Land Blocks, some of which are entirely Private.








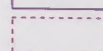
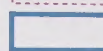


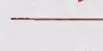
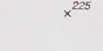
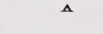
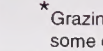


No warranty is made by the Bureau of Land Management as to the accuracy, reliability, or completeness of these data for individual or aggregate use with other data. Original data were compiled from various sources. This information may not meet National Map Accuracy Standards. This product was developed through digital means and may be updated without notification.

**Plate 2
Segments 3 and 4**

2 of 6
 #44811350 F892.576 164 2000 v.4 10-9907-2030
 Plate 3
 Plate 6

LEGEND

-  BLM Administered Land
-  U.S. Forest Service Land
-  U.S. Forest Service Wilderness
-  State Land
-  Private Land in Grazing Allotment * with Allotment Number
-  Public Land in Grazing Allotment with Allotment Number
-  Federal Wild & Scenic River Corridor
-  State Scenic Waterway Corridor
-  Wilderness Study Area
-  State Wildlife Management Area
-  John Day River Basin
-  River Segment Break and Number
-  Public Road
-  River Mile
-  Developed Campground

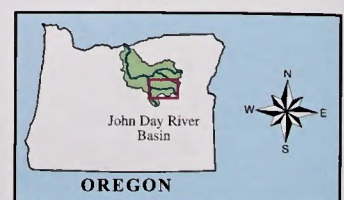
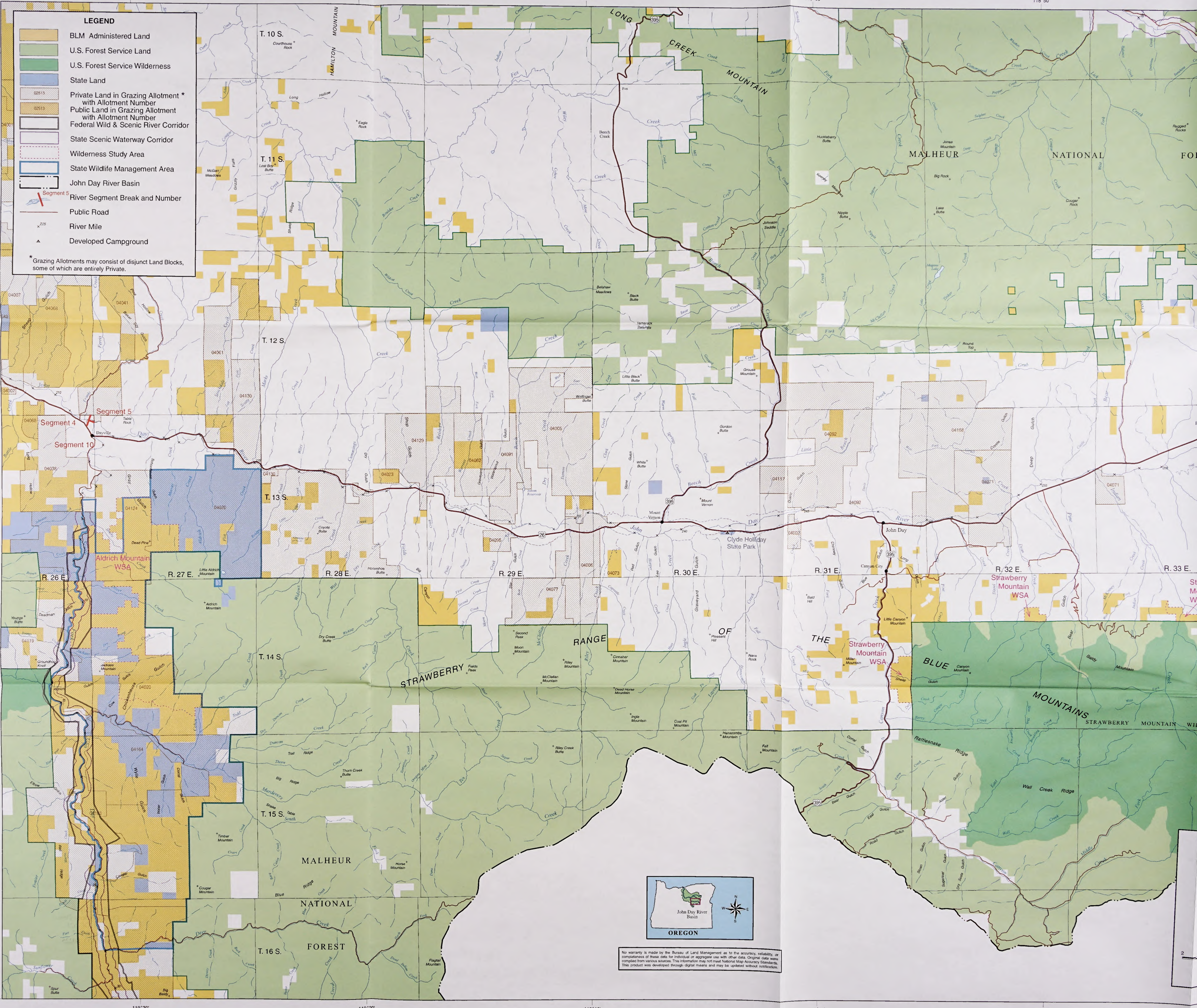
* Grazing Allotments may consist of disjunct Land Blocks, some of which are entirely Private.

Plate 2

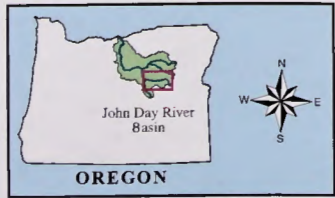
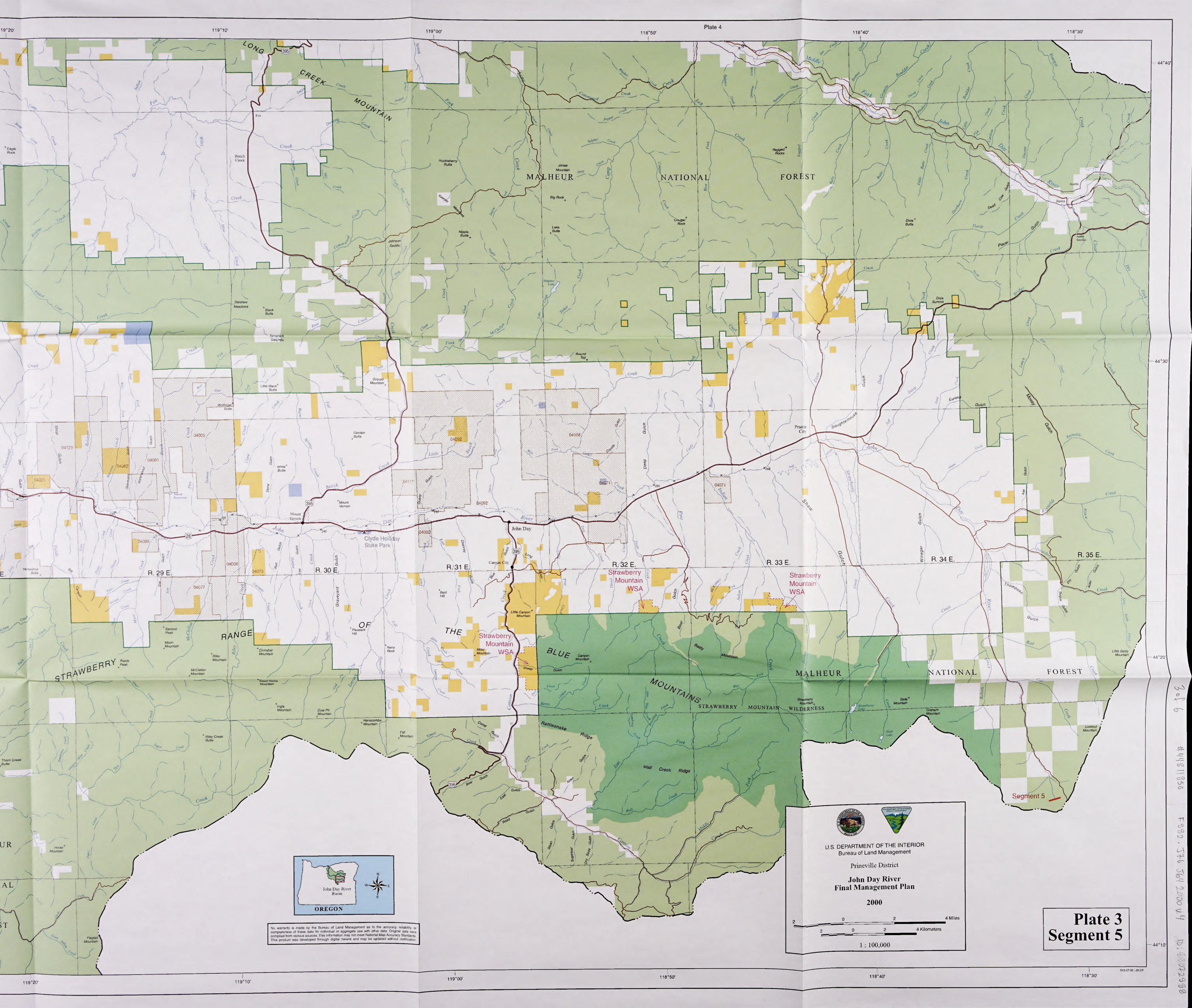
44°30'

44°20'

44°10'



No warranty is made by the Bureau of Land Management as to the accuracy, reliability, or completeness of these data for individual or aggregate use with other data. Original data were compiled from various sources. This information may not meet National Map Accuracy Standards. This product was developed through digital means and may be updated without notification.



No warranty is made by the Bureau of Land Management as to the accuracy, reliability, or completeness of these data for individual or aggregate use with other data. Original data were compiled from various sources. This information may not meet National Map Accuracy Standards. This product was developed through digital means and may be updated without restriction.

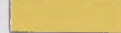


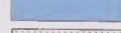


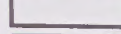
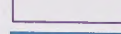

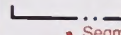

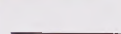
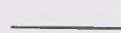
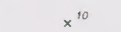
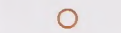
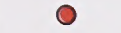
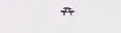
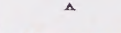
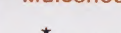
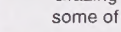
U.S. DEPARTMENT OF THE INTERIOR
Bureau of Land Management
Prineville District
**John Day River
Final Management Plan**
2000

2 0 2 4 Miles
2 0 2 4 Kilometers
1 : 100,000

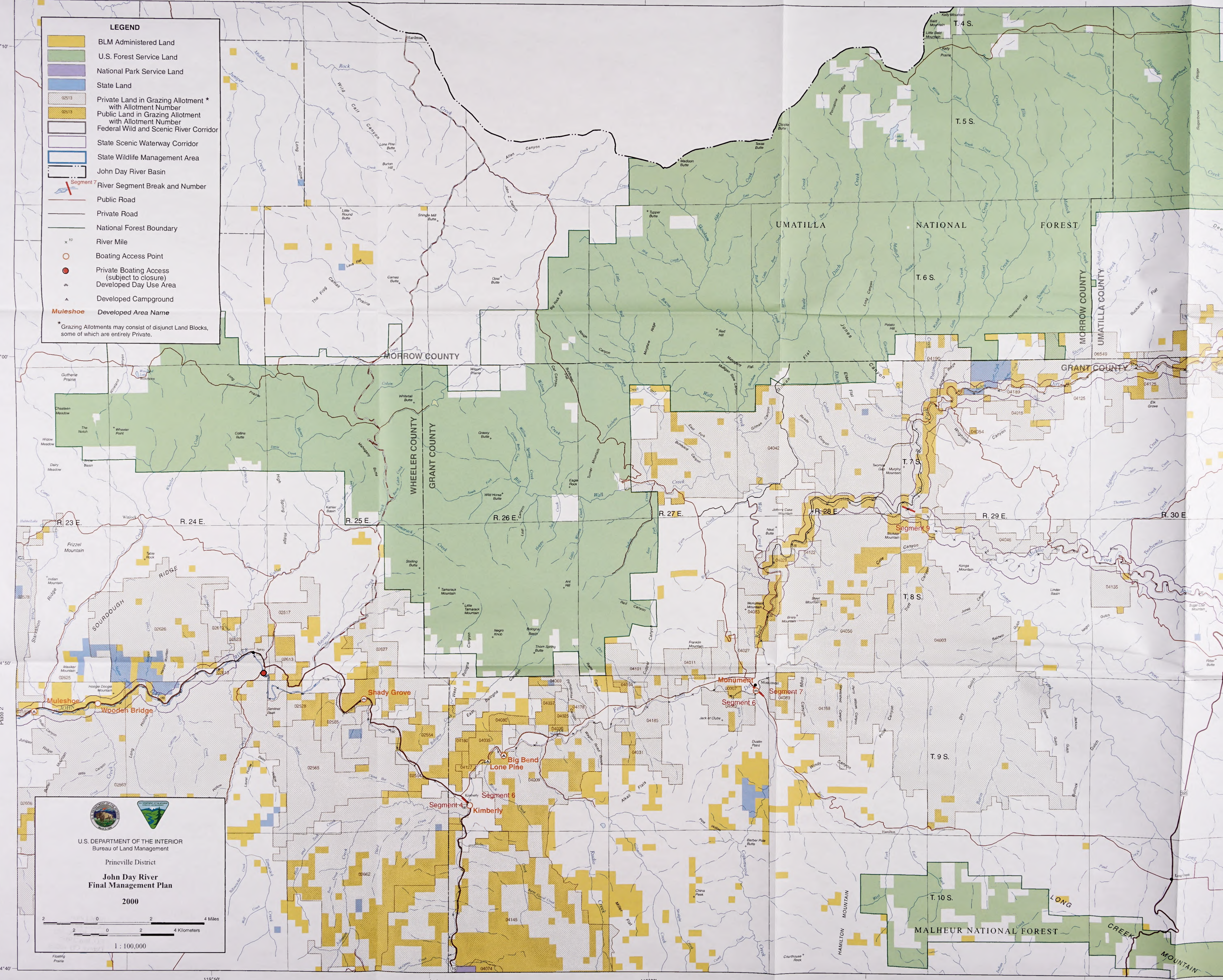
**Plate 3
Segment 5**

3 of 6
449811850
F 992, 576 564 2000 V 4
10:4002998

LEGEND

-  BLM Administered Land
-  U.S. Forest Service Land
-  National Park Service Land
-  State Land
-  Private Land in Grazing Allotment * with Allotment Number
-  Public Land in Grazing Allotment with Allotment Number
-  Federal Wild and Scenic River Corridor
-  State Scenic Waterway Corridor
-  State Wildlife Management Area
-  John Day River Basin
-  River Segment Break and Number
-  Public Road
-  Private Road
-  National Forest Boundary
-  River Mile
-  Boating Access Point
-  Private Boating Access (subject to closure)
-  Developed Day Use Area
-  Developed Campground
-  **Muleshoe** Developed Area Name

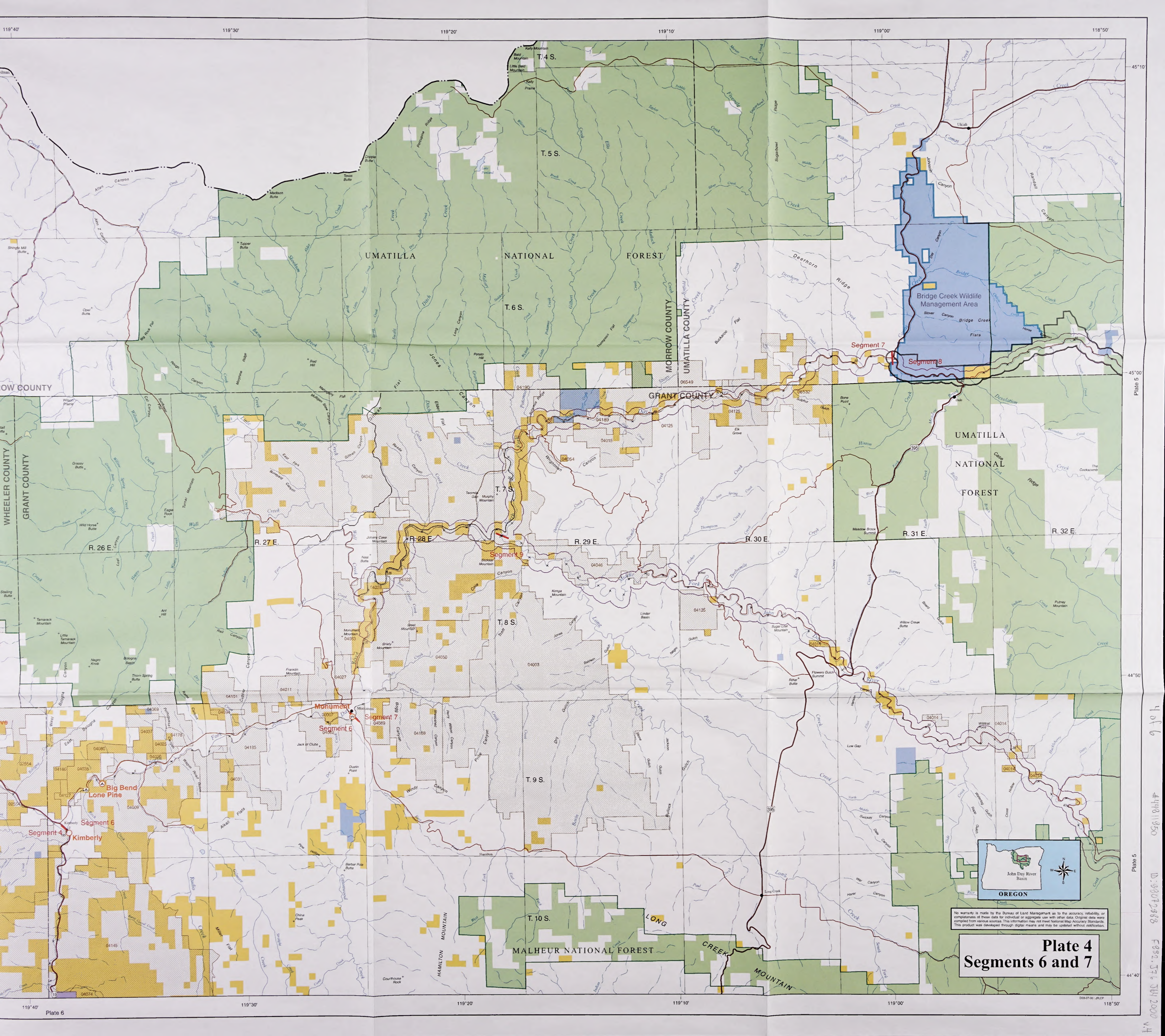
* Grazing Allotments may consist of disjunct Land Blocks, some of which are entirely Private.



U.S. DEPARTMENT OF THE INTERIOR
Bureau of Land Management
Prineville District
**John Day River
Final Management Plan
2000**

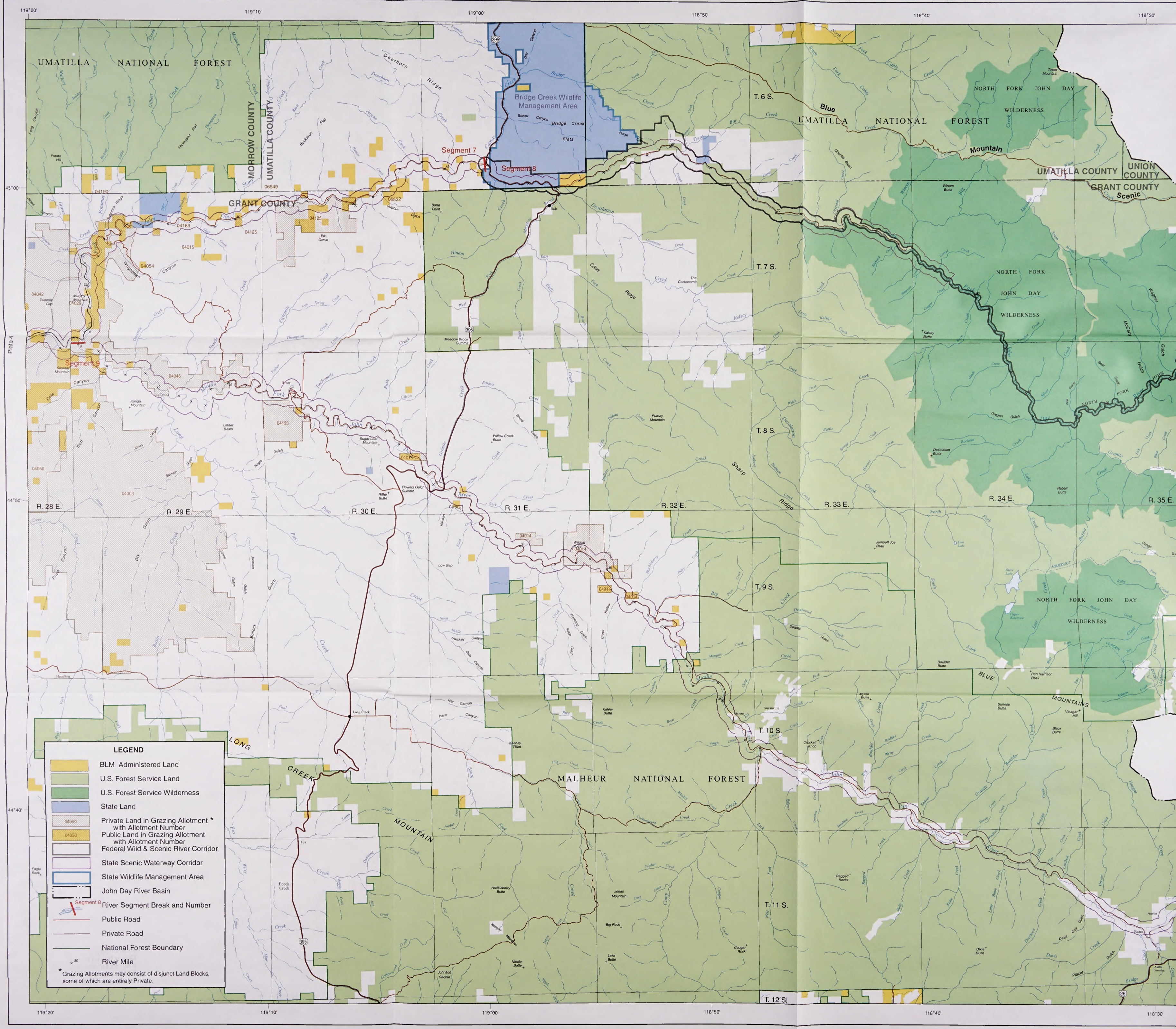
2 0 2 4 Miles
2 0 2 4 Kilometers
1 : 100,000



No warranty is made by the Bureau of Land Management as to the accuracy, reliability, or completeness of these data for individual or aggregate use with other data. Original data were compiled from various sources. This information may not meet National Map Accuracy Standards. This product was developed through digital means and may be updated without notification.

Plate 4 Segments 6 and 7

1 of 6
#4411950
D:907288
F892.576 04/2000



LEGEND

- BLM Administered Land
- U.S. Forest Service Land
- U.S. Forest Service Wilderness
- State Land
- Private Land in Grazing Allotment * with Allotment Number
- Public Land in Grazing Allotment with Allotment Number
- Federal Wild & Scenic River Corridor
- State Scenic Waterway Corridor
- State Wildlife Management Area
- John Day River Basin
- River Segment Break and Number
- Public Road
- Private Road
- National Forest Boundary
- River Mile

* Grazing Allotments may consist of disjunct Land Blocks, some of which are entirely Private.

119°20' 119°10' 119°00' 118°50' 118°40' 118°30'

Plate 4

45°00'

44°50'

44°40'

119°20' 119°10' 119°00' 118°50' 118°40' 118°30'

UMATILLA NATIONAL FOREST

Bridge Creek Wildlife Management Area

UMATILLA NATIONAL FOREST

MALHEUR NATIONAL FOREST

NORTH FORK JOHN DAY WILDERNESS

NORTH FORK JOHN DAY WILDERNESS

NORTH FORK JOHN DAY WILDERNESS

GRANT COUNTY

UMATILLA COUNTY UNION COUNTY

GRANT COUNTY Scenic

R. 28 E. R. 29 E. R. 30 E. R. 31 E. R. 32 E. R. 33 E. R. 34 E. R. 35 E.

T. 7 S.

T. 8 S.

T. 9 S.

T. 10 S.

T. 11 S.

T. 12 S.

Segment 7

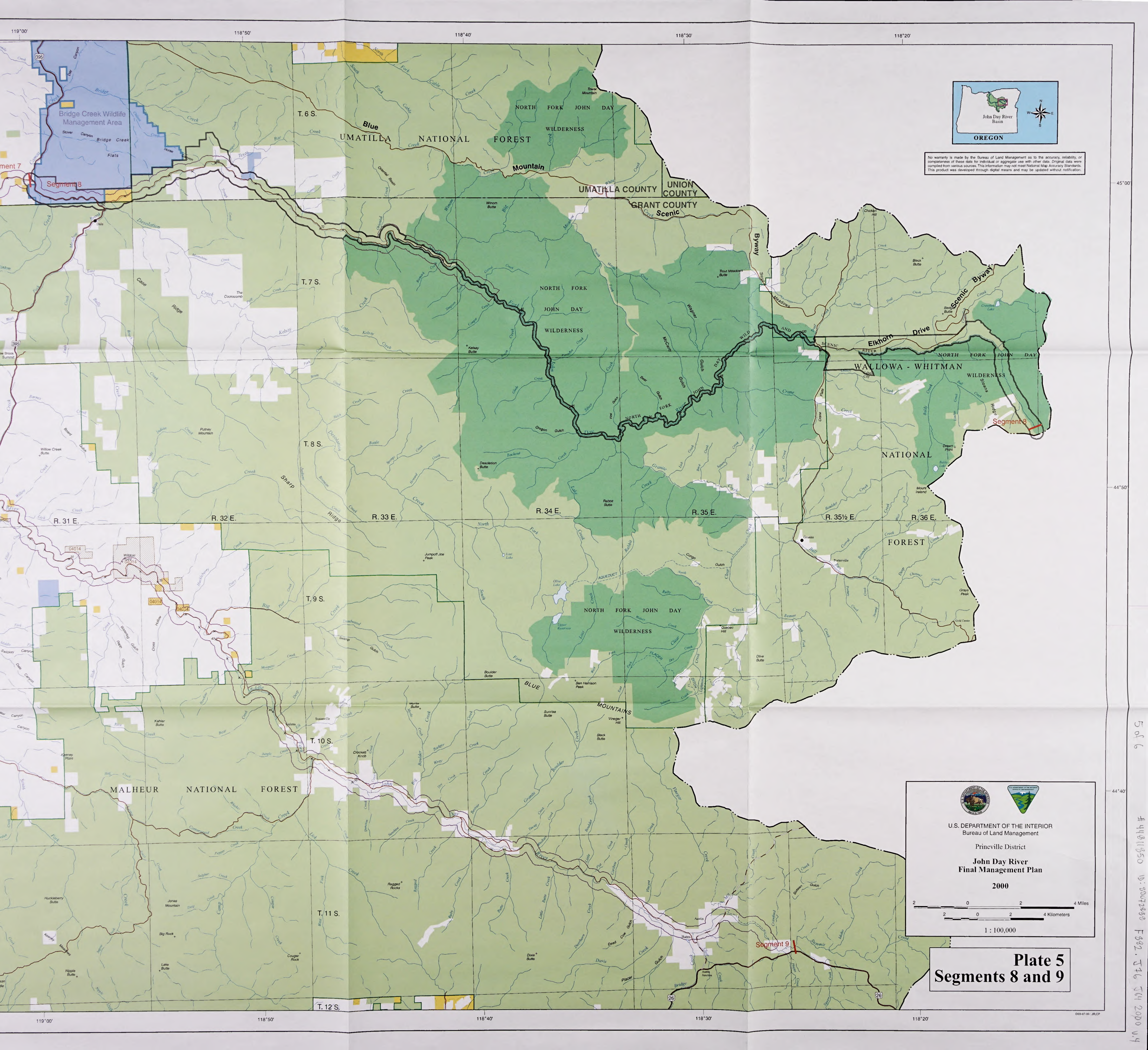
Segment 8

Segment 9

LONG CREEK

MOUNTAIN

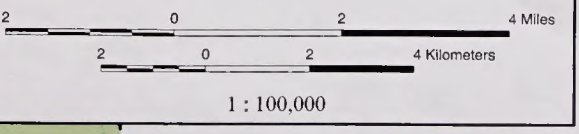
BLUE MOUNTAINS



No warranty is made by the Bureau of Land Management as to the accuracy, reliability, or completeness of these data for individual or aggregate use with other data. Original data were compiled from various sources. This information may not meet National Map Accuracy Standards. This product was developed through digital means and may be updated without notification.



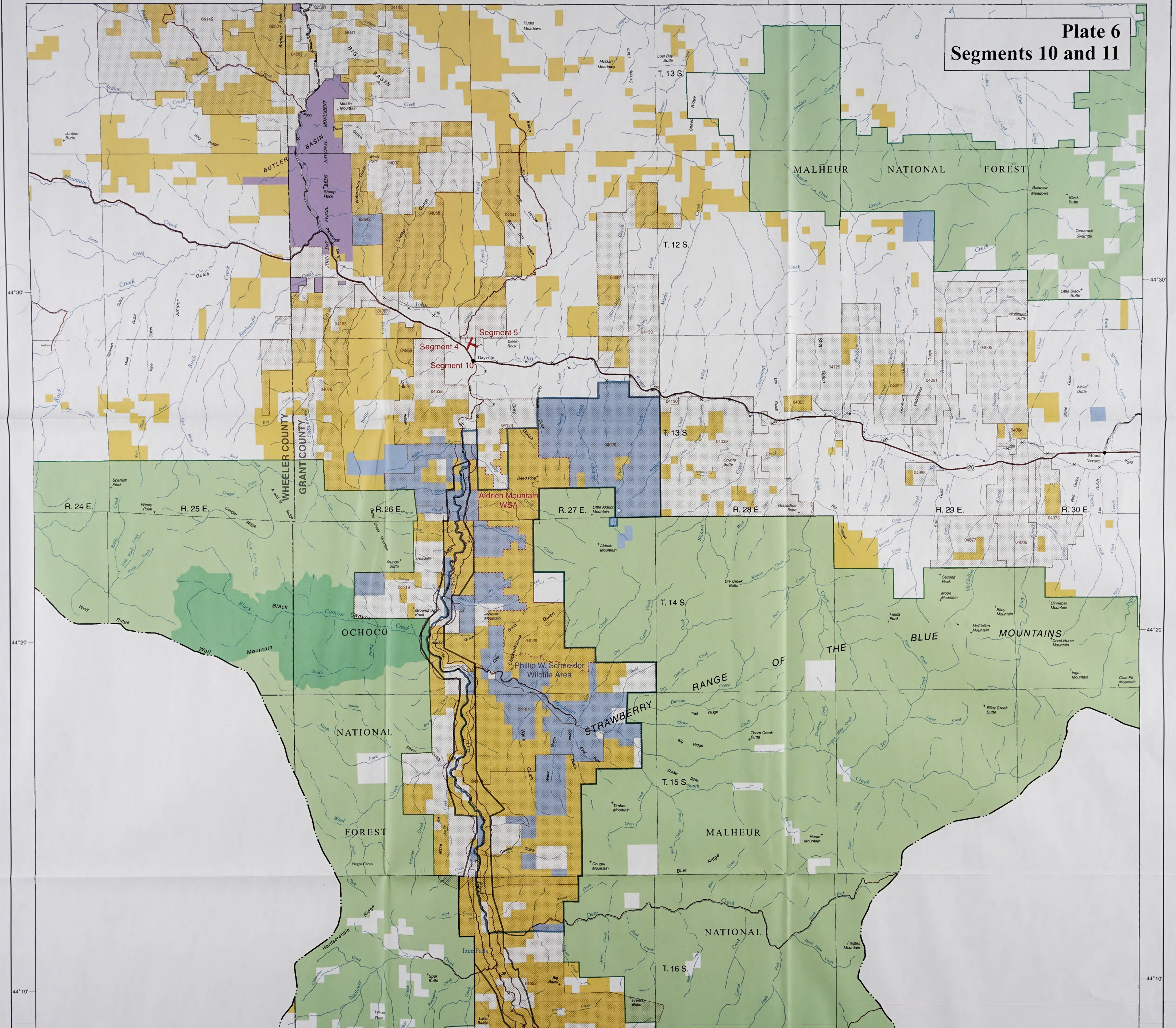
U.S. DEPARTMENT OF THE INTERIOR
Bureau of Land Management
Prineville District
**John Day River
Final Management Plan**
2000

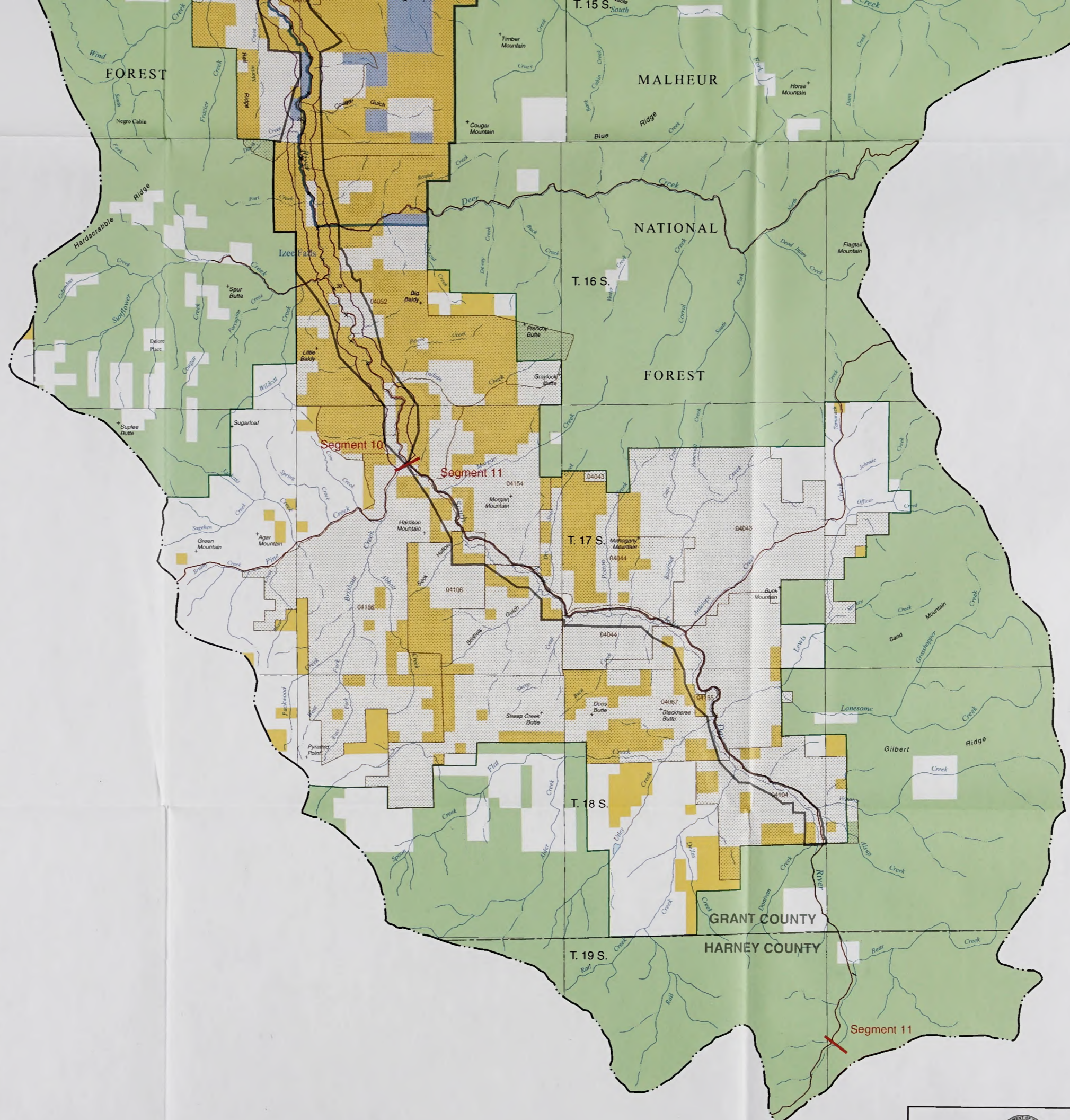


**Plate 5
Segments 8 and 9**

5 of 6
440811850 D: 9/27/2000 F992.T16 5/11/2000 04

Plate 6
Segments 10 and 11





LEGEND

- BLM Administered Land
- U.S. Forest Service Land
- U.S. Forest Service Wilderness
- National Park Service Land
- State Land
- Private Land in Grazing Allotment * with Allotment Number
- Public Land in Grazing Allotment with Allotment Number
- Federal Wild & Scenic River Corridor
- State Scenic Waterway Corridor
- Wilderness Study Area
- State Wildlife Management Area
- John Day River Basin
- River Segment Break and Number
- Public Road
- National Forest Boundary
- River Mile

* Grazing Allotments may consist of disjunct Land Blocks, some of which are entirely Private.



No warranty is made by the Bureau of Land Management as to the accuracy, reliability, or completeness of these data for individual or aggregate use with other data. Original data were compiled from various sources. This information may not meet National Map Accuracy Standards. This product was developed through digital means and may be updated without notification.

U.S. DEPARTMENT OF THE INTERIOR
Bureau of Land Management

Prineville District

**John Day River
Final Management Plan**

2000

2

0

2

4 Miles

2

0

2

4 Kilometers

1 : 100,000

44°10'

44°10'

44°00'

44°00'

43°50'

43°50'

119°40'

119°30'

119°20'

119°10'

000-07-00_35.CP