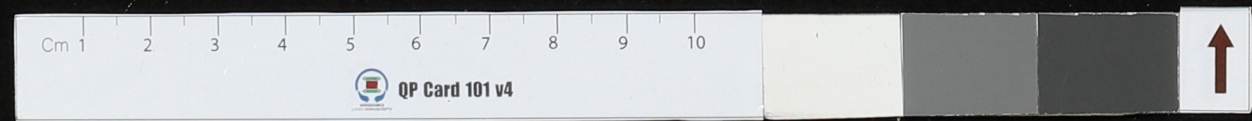
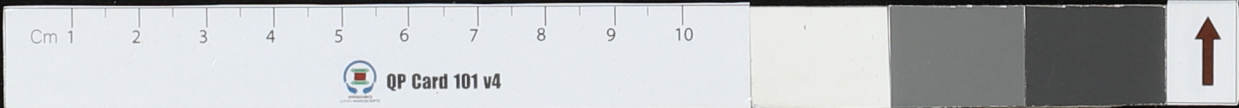


Handwritten text in an ancient script, likely Tamil, inscribed on a palm leaf. The text is arranged in two columns, with a central hole for binding. The script is finely etched into the surface of the leaf.



Handwritten script on the top palm leaf, consisting of two columns of text. The script is in a traditional Southeast Asian style.

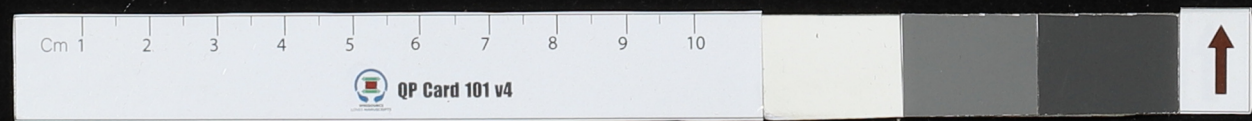
Handwritten script on the bottom palm leaf, consisting of two columns of text. The script is in a traditional Southeast Asian style.



QP Card 101 v4

Handwritten text in two columns on a palm leaf manuscript strip. The script is an ancient form of South Asian writing, likely Grantha or Tamil. The text is arranged in approximately four lines per column.

Handwritten text in two columns on a palm leaf manuscript strip. The script is an ancient form of South Asian writing, likely Grantha or Tamil. The text is arranged in approximately four lines per column.

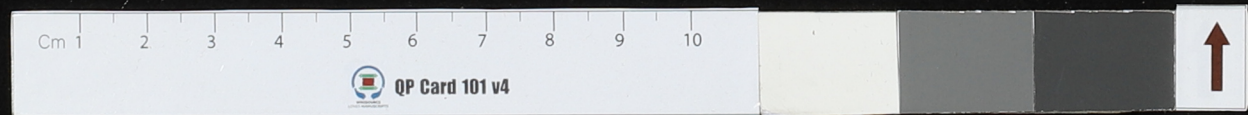


Handwritten text on the top-left fragment of a palm leaf manuscript, consisting of approximately 10 lines of script.

Handwritten text on the top-right fragment of a palm leaf manuscript, consisting of approximately 10 lines of script.

Handwritten text on the bottom-left fragment of a palm leaf manuscript, consisting of approximately 10 lines of script.

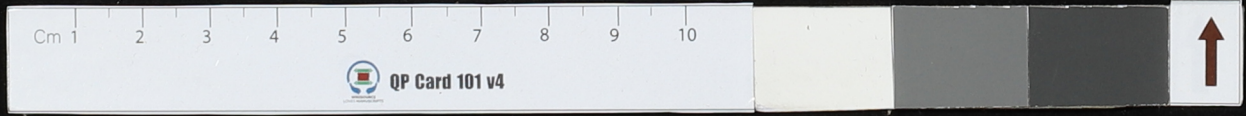
Handwritten text on the bottom-right fragment of a palm leaf manuscript, consisting of approximately 10 lines of script.



QP Card 101 v4

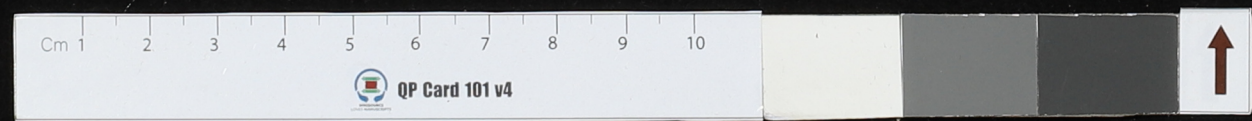
Handwritten text on a palm leaf manuscript strip, consisting of two columns of script.

Handwritten text on a second palm leaf manuscript strip, also consisting of two columns of script.



Handwritten text on a palm leaf manuscript strip, consisting of two columns of script.

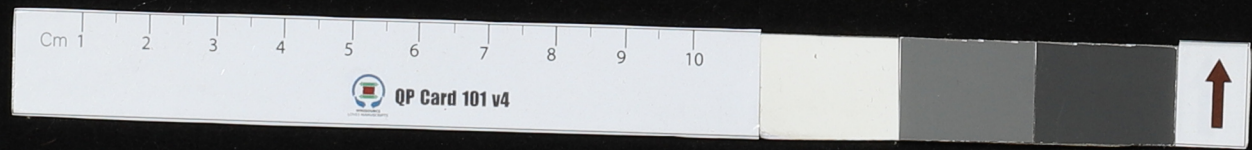
Handwritten text on a second palm leaf manuscript strip, also consisting of two columns of script.



QP Card 101 v4

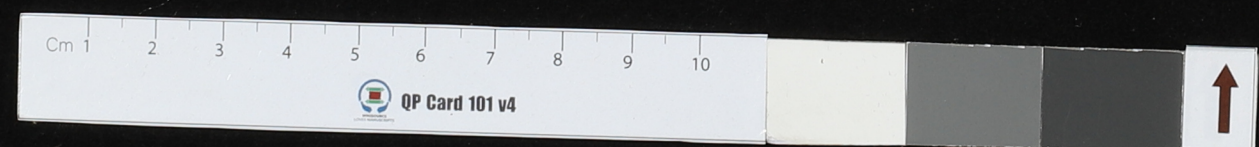
Handwritten text on a palm leaf manuscript strip, consisting of two columns of script.

Handwritten text on a second palm leaf manuscript strip, consisting of two columns of script.



Handwritten text on a palm leaf manuscript strip, consisting of two columns of script.

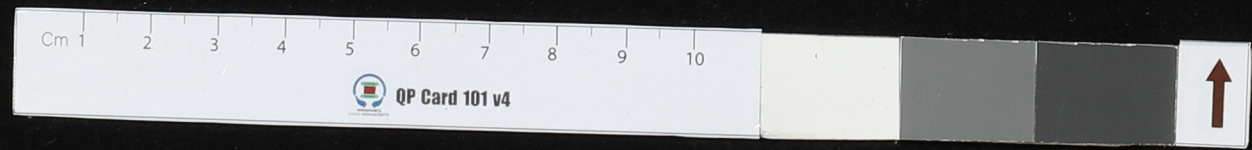
Handwritten text on a second palm leaf manuscript strip, also consisting of two columns of script.



QP Card 101 v4

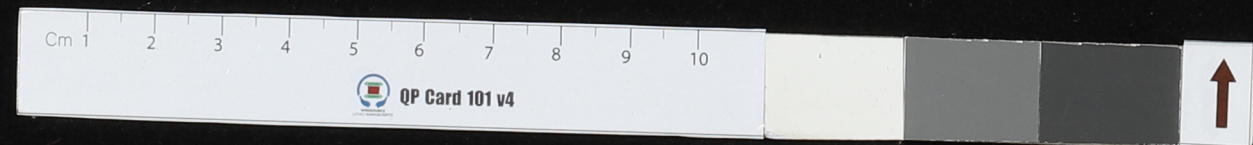
Handwritten text on a palm leaf strip, consisting of two columns of script.

Handwritten text on a second palm leaf strip, also consisting of two columns of script.



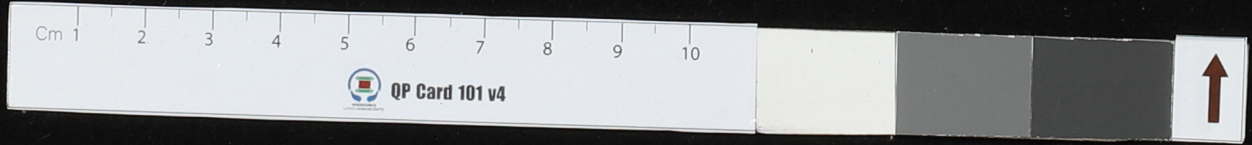
Handwritten text on a palm leaf strip, consisting of two columns of script.

Handwritten text on a second palm leaf strip, also consisting of two columns of script.



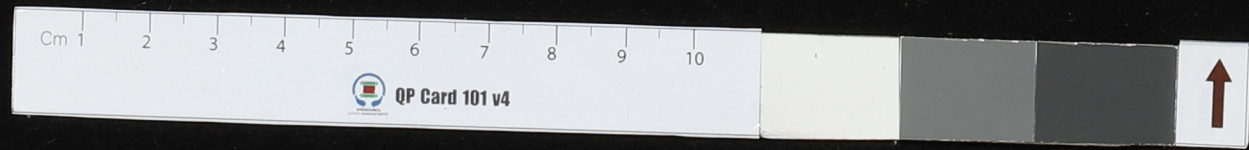
Handwritten text on a palm leaf strip, consisting of two columns of script.

Handwritten text on a palm leaf strip, consisting of two columns of script.



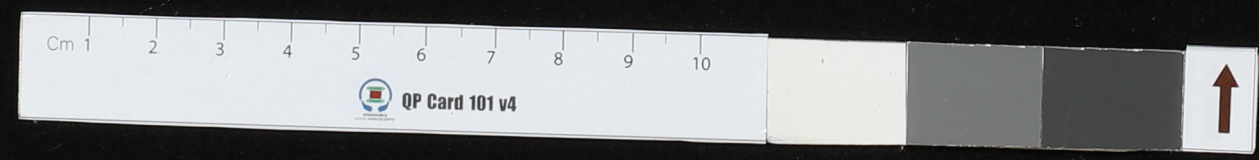
Handwritten text in an ancient script, likely Brahmi, on a palm leaf. The text is arranged in two columns, with a central hole for binding. The script is finely etched into the surface of the leaf.

Handwritten text in an ancient script, likely Brahmi, on a palm leaf. The text is arranged in two columns, with a central hole for binding. The script is finely etched into the surface of the leaf.



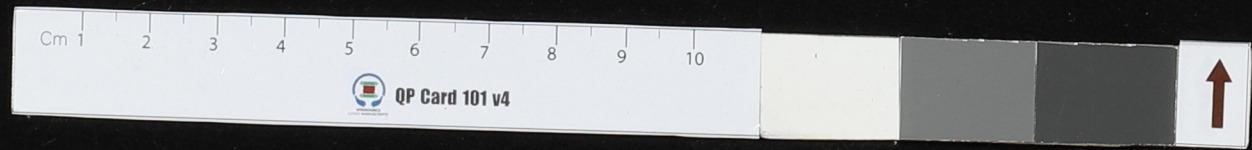
Handwritten text on a palm leaf manuscript strip, consisting of two columns of script.

Handwritten text on a second palm leaf manuscript strip, also consisting of two columns of script.



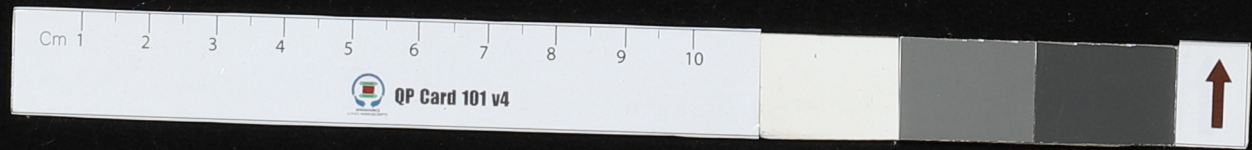
Handwritten text on a palm leaf strip, consisting of two columns of script. The script is a form of South Indian Brahmic script, likely Grantha or Tamil. The text is arranged in approximately four lines per column.

Handwritten text on a palm leaf strip, consisting of two columns of script. The script is a form of South Indian Brahmic script, likely Grantha or Tamil. The text is arranged in approximately four lines per column.



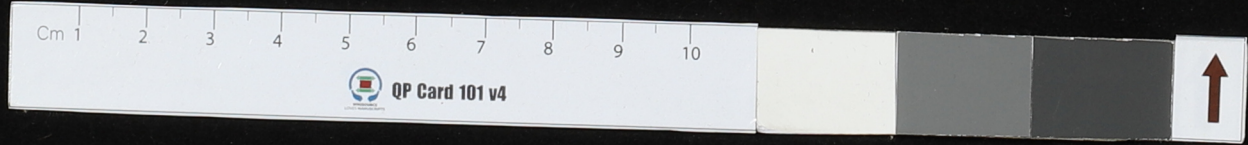
Handwritten text on a palm leaf manuscript strip, consisting of two columns of script.

Handwritten text on a second palm leaf manuscript strip, also consisting of two columns of script.



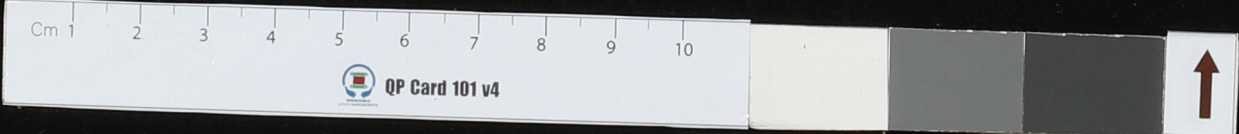
Handwritten text on a palm leaf manuscript strip, consisting of two columns of script.

Handwritten text on a second palm leaf manuscript strip, also consisting of two columns of script.



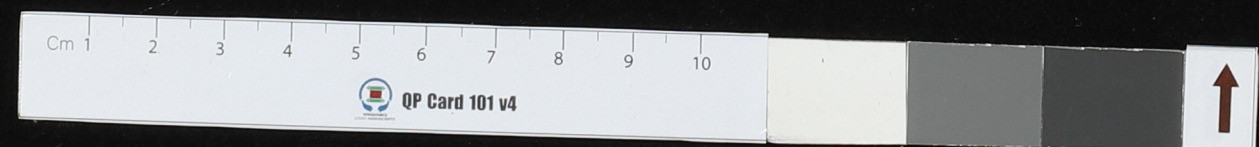
Handwritten text on a palm leaf strip, consisting of two columns of script. The script is a form of South Indian Brahmic script, likely Grantha or Tamil. The text is arranged in approximately 10 lines across the strip. There are two circular holes visible on the left side of the strip, used for binding.

Handwritten text on a second palm leaf strip, also consisting of two columns of script. The script is similar to the one on the first strip. The text is arranged in approximately 10 lines. There are two circular holes visible on the left side of the strip.



Handwritten text on a palm leaf manuscript strip, consisting of two columns of script.

Handwritten text on a palm leaf manuscript strip, consisting of two columns of script.

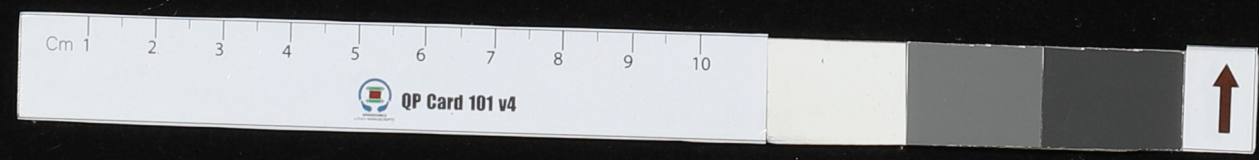


Handwritten text in an ancient script, likely Pāli, on a palm leaf. The text is arranged in approximately three lines. A small number '33' is written in the left margin.

Handwritten text in an ancient script, likely Pāli, on a palm leaf. The text is arranged in approximately three lines. A small number '5' is written in the left margin.

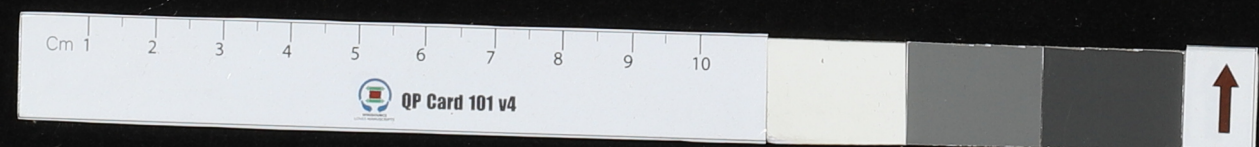
Handwritten text in an ancient script, likely Pāli, on a palm leaf. The text is arranged in approximately three lines.

Handwritten text in an ancient script, likely Pāli, on a palm leaf. The text is arranged in approximately three lines.



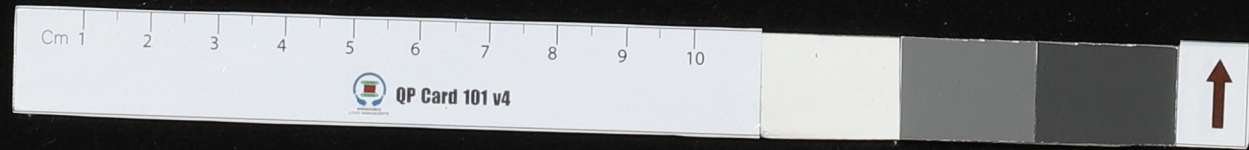
46
...
...
...
...
...
6

...
...
...
...
...
...



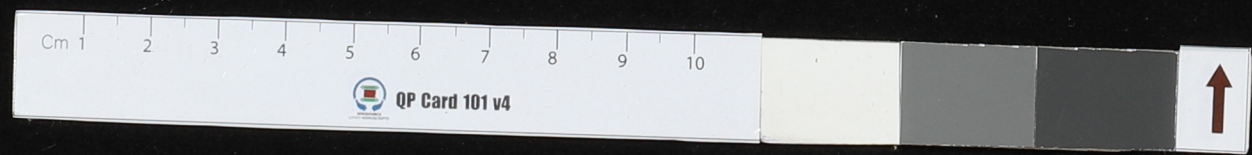
Handwritten text in two columns on a palm leaf fragment. The script is an ancient form of a South Asian script, likely Grantha or Tamil. The text is arranged in approximately four lines per column. There are two circular holes visible on the leaf, one in each column.

Handwritten text in two columns on a second palm leaf fragment. The script is consistent with the first fragment. The text is arranged in approximately four lines per column. There are two circular holes visible on the leaf, one in each column.



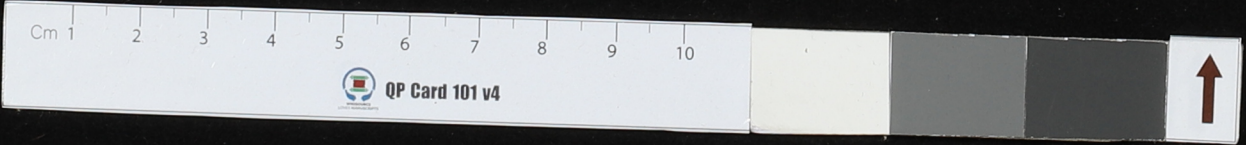
Handwritten text in an ancient script, likely Pāli, on a palm leaf. The text is arranged in two columns. A small number '၃' is visible between the columns. The right end of the leaf features a small circular mark and the number '၆၆'.

Handwritten text in an ancient script, likely Pāli, on a palm leaf. The text is arranged in two columns. A small circular mark is visible between the columns. The right end of the leaf features a small circular mark.



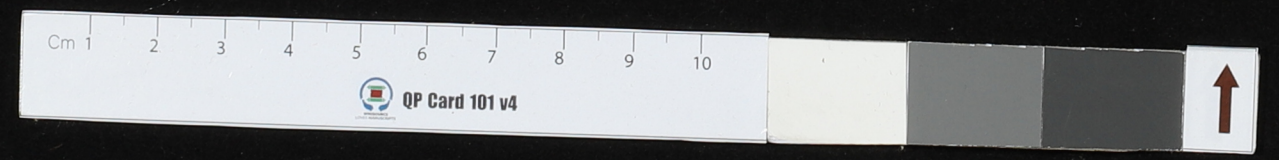
Handwritten text on a palm leaf strip, consisting of two columns of script.

Handwritten text on a palm leaf strip, consisting of two columns of script.



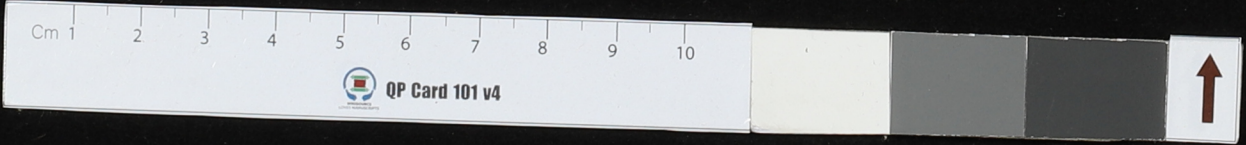
36
Handwritten text in Devanagari script on a palm leaf manuscript strip, consisting of two columns of text.

Handwritten text in Devanagari script on a palm leaf manuscript strip, consisting of two columns of text.



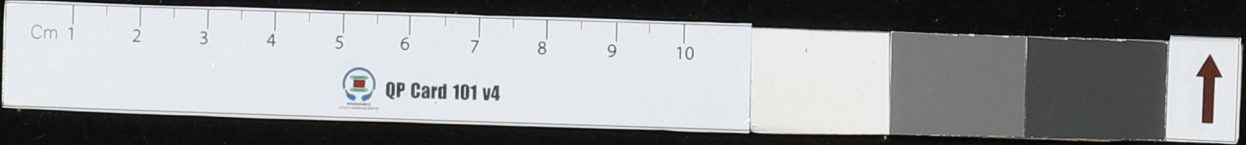
Handwritten text on a palm leaf manuscript strip, consisting of two columns of script. The script is in an ancient South Asian language, likely Tamil or Grantha. The left column begins with a small symbol resembling the number '8'.

Handwritten text on a second palm leaf manuscript strip, also consisting of two columns of script in the same ancient language as the first strip.



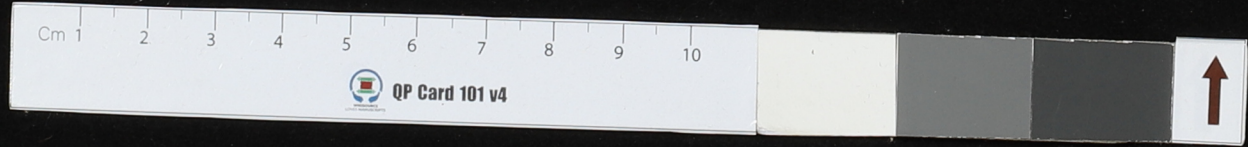
Handwritten text on a palm leaf manuscript strip, consisting of two columns of script. The script is in an ancient South Asian language, likely Pali or Sanskrit. The text is written in dark ink on a light-colored, slightly textured leaf. There are two circular holes visible on the strip, used for binding multiple leaves together. The first column starts with a small symbol that looks like a '3' or a similar character. The second column starts with a double vertical line '||'.

Handwritten text on a second palm leaf manuscript strip, also consisting of two columns of script. The script is consistent with the first strip. There are two circular holes visible on the strip. The text is written in dark ink on a light-colored leaf.



Handwritten text on a palm leaf manuscript strip, consisting of two columns of script.

Handwritten text on a second palm leaf manuscript strip, also consisting of two columns of script.

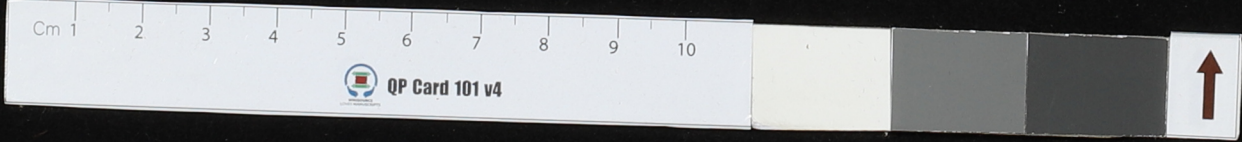


QP Card 101 v4

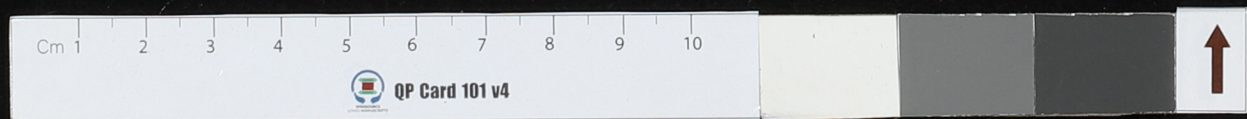
Handwritten text in an ancient script, likely Balinese or Javanese, inscribed on a palm leaf manuscript. The text is arranged in two lines across the length of the leaf.

IS A. WARIGA
PALUMBANGAN

IS B. Candra
Goha



Handwritten text on a palm-leaf manuscript strip, featuring a central metal fastener and a white label on the right.



Handwritten text in an ancient script, likely Balinese, on a palm leaf manuscript. The text is arranged in two columns, with a central binding point. The script is finely etched into the surface of the leaf.

IS A. WARIGA
PALUMBANGAN

IS. B. Candra
Groha


WM ID 001 0008

