

GHQ/SCAP Records (RG 331, National Archives and Records Service)

Description of contents

(1) Box no. 3071

(2) Folder title/number: (9)
School Costs

(3) Date: _____, 1949 - _____, 1951

(4) Subject:

| Classification | Type of record |
|----------------|----------------|
| 9811 | c |

(5) Item description and comment:

Shikoku

(6) Reproduction: Yes No

(7) Film no. _____ Sheet no. _____

(Compiled by *National Diet Library*)

Kamihara's Lower S. S. Kagunagon

273

February 9, 1950

School Expense

(Unit yen)

I Expenses of Administration

| | |
|--------------------------------|--------|
| 1. Salary of principal | 78,671 |
| 2. Travel expense of principal | 5,454 |
| 3. Salary of school servant | 36,000 |
| 4. Office equipment expense | 2,000 |
| 5. Office supplies expense | 14,754 |

Total 136,879

II Expenses of Instruction

| | |
|-------------------------------|------------------|
| 1. Teacher's salaries | 569,240 |
| 2. Teacher's travel expense | 24,328 |
| 3. Classroom supplies expense | 53,410 <u>50</u> |

香 川 縣

| | |
|------------------------------------|------------------|
| 4. Expenses of students activities | 97,104 <u>30</u> |
| 5. Classroom equipment expense | 42,213 <u>10</u> |

II Expenses of Instruction

| | |
|-------------------------------|------------------|
| 1. Teachers salaries | 569,240 |
| 2. Teachers travel expense | 24,328 |
| 3. Classroom supplies expense | 53,410 <u>50</u> |

香 川 縣

| | |
|------------------------------------|-------------------|
| 4. Expenses of students activities | 97,104 <u>30</u> |
| 5. Classroom equipment expense | 42,213 <u>10</u> |
| Total | 786,295 <u>90</u> |

III Expenses of Operation

| | |
|---|--------|
| 1. Fuel expense | 21,500 |
| 2. Light, heat expense | 100 |
| 3. Print and book binding expense | 12,000 |
| 4. Communication and transportation expense | 458 |
| 5. Miscellaneous expense | 7,230 |

Total 41,288

IV Expense of Maintenance

| | |
|------------------------------------|-------|
| 1. Simple repairs expense | 2,668 |
| 2. Resupply of essential materials | 1,200 |

(用紙式様記) 1941年

| | |
|--------------------------|-------------------|
| 3. Miscellaneous expense | 150 |
| | <hr/> Total 4,018 |

| | |
|-------------|------------|
| Grand total | |
| | 968,480 90 |

| | |
|--|-------------|
| V. Number of school children | 309 |
| VI. Average daily attendance of children in this year | 296 |
| VII. School expense of a child | <hr/> 3,270 |

三 二 三

School Report

教調カハ八号

昭和五年四月十七日

内閣民事部

民間教育課長殿

愛媛縣教育委員会 教育



學校經費調提出に付し

爰にへんがし課長御末縣の節御要望のありは縣下小中
高等學校の經費調査書別紙の通り出末ましたから御報告
します。

Rec'd

18 April '50

小學校 學校經費調 No. 1

| 項目 郡市 | A. 一般 統 轄 費 | | | | B. 教 授 | |
|----------|--------------------------|--------------------------|-------------------------|-------------------------|---------------------------|---------------------------|
| | 計 | 給支費 | 旅費 | 需要費 | 計 | 給支費 |
| 温 泉 | 5,654,961 | 4,472,083 | 309,022 | 873,856 | 47,179,437 ⁵⁰ | 40,271,876 ⁵⁰ |
| 越 智 | 8,129,294 ⁵⁰ | 6,857,551 | 605,750 | 565,993 ⁵⁰ | 44,929,168 ⁶⁶ | 38,537,393 ⁵⁶ |
| 同 象 | 3,281,128 | 2,964,135 | 107,873 | 209,120 | 22,617,589 | 19,175,802 |
| 新 居 | 2,900,105 | 2,569,882 | 135,138 | 195,085 | 19,551,555 | 16,663,322 |
| 宇 摩 | 6,347,443 | 5,480,038 | 461,745 | 405,460 | 33,112,130 | 27,419,734 |
| 上 野 沢 | 3,511,569 | 2,997,273 | 183,805 | 333,491 | 15,374,230 | 13,077,027 |
| 伊 予 | 3,762,174 | 3,307,164 | 110,019 | 345,011 | 29,789,039 | 24,897,812 |
| 花 乡 | 5,725,854 | 5,019,301 | 234,301 | 472,252 | 32,663,175 | 27,639,518 |
| 西 宇 和 | 5,233,832 ⁸⁷ | 4,309,214 ¹⁰ | 409,684 ³⁰ | 514,932 ²⁰ | 23,467,394 ⁰⁴ | 18,108,005 ⁹² |
| 東 宇 和 | 4,656,099 | 4,035,695 | 263,364 | 357,040 | 24,201,578 | 20,627,464 |
| 北 宇 和 | 5,217,979 | 4,130,013 | 378,193 | 689,774 | 36,150,738 | 28,455,132 |
| 南 宇 和 | 3,168,267 ¹⁸ | 3,198,907 ⁹⁸ | 207,660 | 261,902 | 14,297,307 ³⁶ | 11,898,357 ³⁶ |
| 松 山 | 4,122,906 | 3,174,615 | 994,944 | 853,377 | 49,676,216 | 41,935,971 |
| 今 治 | 1,471,312 | 1,173,978 | 33,284 | 264,050 | 17,904,316 | 15,082,085 |
| 西 條 | 1,490,640 | 1,276,087 | 35,870 | 178,683 | 14,437,873 | 12,733,831 |
| 新 居 浜 | 1,270,504 | 906,438 | 19,600 | 344,466 | 13,982,242 | 11,341,424 |
| 八 幡 浜 | 1,270,940 | 1,138,252 | 10,928 | 121,760 | 11,142,556 | 9,680,022 |
| 宇 和 島 | 1,474,962 | 1,188,327 | 32,707 | 253,928 | 13,811,771 | 11,791,777 |
| 計 | 67,093,093 ³⁶ | 58,198,854 ⁵⁹ | 3,654,056 ³⁸ | 7,240,182 ⁴⁰ | 462,208,395 ⁵⁶ | 389,858,480 ¹⁴ |

CE
Rec'd 18 Apr '50

No. 1

| No. | 需要費 | B. 教授 | | | | C. 管理 | | | |
|-----|-------------------------|---------------------------|---------------------------|--------------------------|--------------------------|--------------------------|------------|---------|--------------------------|
| | | 計 | 給支費 | 旅費 | 需要費 | 計 | 給支費 | 旅費 | 需要費 |
| 22 | 873.856 | 47,179.437 ⁵⁰ | 40,271.876 ⁵⁰ | 1,253.767 | 5,653.794 | 2,561.054 | 1,129.121 | 4,000 | 1,427.933 |
| 25 | 565.993 | 44,729.168 ⁶⁶ | 38,537.393 ⁵⁶ | 1,667.860 ⁴⁰ | 4,723.937 ⁷⁰ | 3,475.343 ⁴⁰ | 1,991.864 | 10,700 | 1,472,579 ⁴⁰ |
| 23 | 209.120 | 22,617.589 | 19,675.802 | 486.179 | 2,455.608 | 1,457.375 | 642.784 | 2,515 | 817,196 |
| 28 | 195.085 | 19,551.555 | 16,663.322 | 620.327 | 1,267.904 | 2,389.498 | 1,802.339 | 1,000 | 585,159 |
| 15 | 405.460 | 33,112.130 | 27,419.734 | 1,403.856 | 4,138,540 | 2,647.918 | 1,314,315 | 42,200 | 1,271,403 |
| 25 | 333,491 | 15,374.230 | 13,077.027 | 474.916 | 1,800,207 | 1,722,666 | 968.449 | 6,853 | 747.364 |
| 9 | 345.011 | 29,789.039 | 24,897.812 | 680.806 | 3,210.421 | 2,227.349 | 1,162.999 | 1,200 | 1,063,357 |
| 1 | 472,752 | 32,663.175 | 27,639.578 | 1,068.920 | 3,954.827 | 2,052,293 | 993.197 | 1,136 | 1,051,960 |
| 2 | 514,933 ²⁰ | 23,467.394 ¹⁴ | 18,108.005 ²² | 1,218.538 | 4,140,880 ³² | 2,459,729 | 1,190,637 | 19,800 | 1,251,292 |
| 4 | 357,040 | 24,201.578 | 20,627.464 | 941.298 | 2,632,936 | 2,670,423 | 1,852,826 | 1,100 | 816,499 |
| 2 | 689,774 | 36,150.738 | 28,455.162 | 1,481,266 | 5,914,340 | 2,844,294 | 1,412,845 | 12,096 | 1,419,353 |
| 0 | 261,902 | 14,297.309 ³⁶ | 11,898.357 ³⁶ | 689,908 | 1,709,048 | 883,539 | 585,454 | 5,000 | 292,585 |
| 4 | 853,377 | 49,696.216 | 41,935.971 | 754,367 | 7,105,878 | 4,434,262 | 2,921,269 | 25,712 | 1,481,281 |
| 4 | 264,050 | 17,904.316 | 15,082,085 | 325.862 | 2,496,479 | 1,703,856 | 1,290,484 | 2,800 | 410,572 |
| | 178,683 | 14,437,873 | 12,733,831 | 254,144 | 1,449,898 | 2,059,590 | 1,672,273 | 4,255 | 203,052 |
| | 344,466 | 13,982,242 | 11,341,424 | 470,903 | 2,161,915 | 2,356,199 | 1,268,850 | 21,115 | 1,066,234 |
| | 121,760 | 11,142,556 | 9,680,022 | 248,449 | 1,214,085 | 1,269,275 | 925,526 | 2,000 | 341,749 |
| | 253,728 | 13,811,771 | 11,791,777 | 316,914 | 1,703,078 | 1,343,700 | 913,364 | 0 | 430,336 |
| | 7,240,182 ⁴⁰ | 462,208,395 ⁵⁶ | 389,858,480 ¹⁴ | 14,666,162 ⁴⁰ | 57,683,753 ⁰² | 41,557,883 ⁴⁰ | 24,044,576 | 167,482 | 16,345,805 ⁴⁰ |

小學校 學校經費調 No. 2

| 市郡 | D. 維持費 | | E. 固定費 | | (ABCDE) 經常費計 | | | |
|-----|------------|------------|-----------|-----------|---------------------------|---------------------------|--------------------------|------|
| | 計 | 需要費 | 計 | 需要費 | 計 | 給與費 | 旅費 | 需 |
| 温泉 | 2,598,175 | 2,598,175 | 114,560 | 114,560 | 58,108,187 ⁵² | 45,873,080 ⁵² | 1,566,789 | 10.6 |
| 越智 | 2,648,907 | 2,648,907 | 89,542 | 89,542 | 59,172,255 ⁵⁸ | 47,386,788 ⁵⁸ | 2,284,570 ⁴⁶ | 9.5 |
| 周桑 | 1,305,955 | 1,305,955 | 138,930 | 138,930 | 28,800,797 | 23,282,721 | 596,567 | 4.9 |
| 新庄 | 1,604,460 | 1,604,460 | 73,353 | 73,353 | 25,578,971 | 21,035,543 | 756,467 | 3.7 |
| 早津 | 2,135,132 | 2,135,132 | 77,324 | 77,324 | 44,219,947 | 34,214,187 | 1,708,001 | 8.0 |
| 上浮院 | 722,528 | 722,528 | 18,905 | 18,905 | 21,352,898 | 17,064,749 | 65,574 | 3.6 |
| 伊豫 | 1,854,885 | 1,854,885 | 78,233 | 78,233 | 36,721,700 | 29,347,975 | 791,825 | 6.5 |
| 瓦乡 | 1,413,181 | 1,413,181 | 45,127 | 45,127 | 41,899,530 | 33,652,016 | 1,310,267 | 6.7 |
| 西早和 | 2,118,022 | 2,118,022 | 21,994 | 21,994 | 33,300,971 ²² | 23,604,857 ³² | 1,645,992 ³⁸ | 8.0 |
| 東早和 | 1,618,348 | 1,618,348 | 35,750 | 35,750 | 33,187,218 | 26,545,985 | 1,205,762 | 5.4 |
| 北早和 | 2,225,480 | 2,225,480 | 50,540 | 50,540 | 46,487,031 | 33,997,970 | 2,191,554 | 10.2 |
| 南早和 | 1,118,816 | 1,118,816 | 23,120 | 23,120 | 19,990,152 ³⁴ | 15,682,613 ³⁴ | 902,568 | 3.4 |
| 松山 | 1,397,451 | 1,397,451 | 322,520 | 322,520 | 59,973,355 | 48,037,855 | 874,993 | 11.0 |
| 今治 | 1,244,709 | 1,244,709 | 0 | 0 | 22,324,253 | 17,546,497 | 361,946 | 4.9 |
| 西條 | 298,662 | 298,662 | 81,836 | 81,836 | 18,349,601 | 15,682,191 | 294,269 | 2.1 |
| 新居浜 | 1,673,389 | 1,673,389 | 0 | 0 | 19,287,334 | 13,576,412 | 519,618 | 5.1 |
| 八幡浜 | 620,126 | 620,126 | 221,610 | 221,610 | 14,524,507 | 11,743,800 | 261,377 | 2.1 |
| 早和島 | 674,680 | 674,680 | 33,217 | 33,217 | 17,338,330 | 13,892,470 | 369,621 | 3.0 |
| 計 | 27,282,706 | 27,282,706 | 1,426,461 | 1,426,461 | 609,568,539 ³² | 472,101,930 ⁹² | 18,487,700 ⁷⁸ | 19.0 |

| (ABCDE) 經常費計 | | | | 年間平均 生徒數 | 生徒一人 當量費 | F. 臨時施設費 | | |
|-----------------------------|------------------------------|-----------------------------|------------------------------|-------------|-------------|------------|------------|-----------|
| 計 | 給與費 | 旅費 | 需要費 | | | 計 | 施設費 | 備品費 |
| ⁵⁰ 58,108,187 | ⁵⁰ 45,877,080 | 1,566,789 | 10,668,318 | 17,535 | 3.314 | 2,759,775 | 2,287,000 | 472,775 |
| ⁵⁶ 59,172,755 | ⁵⁶ 47,381,788 | ⁶⁰ 2,284,570 | ⁶⁰ 9,500,956 | 21,575 | 2.750 | 4,172,767 | 3,534,297 | 638,690 |
| 28,800,797 | 23,282,721 | 596,567 | 4,921,509 | 9,502 | 3.031 | 736,165 | 475,005 | 261,160 |
| 25,578,971 | 21,035,543 | 756,467 | 3,726,961 | 8,996 | 2.837 | 7,322,500 | 1,178,500 | 144,000 |
| 44,219,947 | 34,244,087 | 1,908,001 | 8,097,859 | 14,347 | 3.082 | 3,843,761 | 3,416,435 | 427,326 |
| 21,352,898 | 17,064,949 | 665,574 | 3,623,545 | 7,247 | 2.682 | 3,264,966 | 2,833,642 | 431,324 |
| 36,721,700 | 29,317,975 | 791,825 | 6,561,900 | 12,401 | 3.279 | 4,674,218 | 4,212,534 | 461,684 |
| 41,899,530 | 33,652,116 | 1,310,267 | 6,937,247 | 15,139 | 2.768 | 3,493,120 | 3,332,480 | 160,640 |
| ²² 33,300,971 | ³² 22,604,857 | ³⁸ 1,645,992 | ²² 8,047,122 | 12,365 | 2.693 | 1,588,151 | 854,169 | 733,982 |
| 33,187,218 | 26,545,985 | 1,205,762 | 5,460,471 | 10,125 | 3.277 | 3,788,800 | 3,503,500 | 285,300 |
| 46,487,031 | 33,997,970 | 2,191,554 | 10,299,487 | 16,866 | 2.798 | 988,504 | 895,677 | 92,825 |
| ³⁴ 19,990,152 | ³⁴ 15,682,613 | 902,568 | 3,405,471 | 7,120 | 2.808 | 5,307,968 | 4,835,918 | 472,050 |
| 59,973,355 | 48,037,855 | 874,993 | 11,060,507 | 18,847 | 3.182 | 21,709,000 | 20,575,800 | 1,133,200 |
| 22,324,253 | 17,546,497 | 361,946 | 4,445,810 | 7,100 | 3.144 | 7,700,600 | 7,328,000 | 372,600 |
| 18,369,601 | 15,682,191 | 294,269 | 2,392,141 | 6,377 | 2.897 | 3,573,200 | 3,350,200 | 223,000 |
| 19,282,334 | 13,576,912 | 519,618 | 5,246,004 | 7,346 | 2.585 | 933,470 | 686,820 | 246,650 |
| 14,524,507 | 11,743,800 | 261,377 | 2,519,330 | 5,125 | 2.834 | 2,907,923 | 2,803,500 | 104,423 |
| 17,338,330 | 13,893,470 | 349,621 | 3,095,237 | 7,121 | 2.435 | 7,014,543 | 6,576,043 | 438,500 |
| ³² 60,568,539 | ⁹² 472,101,930 | ⁷⁸ 18,487,700 | ⁸² 109,978,707 | 205,076 | 2.900 | 99,779,631 | 92,779,502 | 7,000,129 |

中學校 學校經費調 No 1.

| 郡市別 | 項目 | A 一般統轄費 | | | | B 教 授 | |
|-------|----|---------------|---------------|--------------|--------------|----------------|----------------|
| | | 計 | 給 予 費 | 旅 費 | 需要費 | 計 | 給 予 費 |
| 溫 泉 | | 5,451,685.20 | 4,517,910. | 256,577.20 | 677,198 | 32,372,279.33 | 25,346,983.58 |
| 越 智 | | 5,686,125.06 | 4,480,879.08 | 322,101.38 | 883,144.60 | 38,589,205.96 | 30,242,200.70 |
| 周 桑 | | 2,171,658. | 1,929,950. | 47,942. | 193,766 | 17,896,953. | 13,503,319. |
| 新 居 | | 1,856,510. | 1,646,577. | 70,820. | 139,113 | 13,818,309. | 11,089,964. |
| 宇 摩 | | 3,568,798. | 3,088,706. | 283,817. | 196,275 | 26,878,110. | 20,004,194. |
| 上 浮 穴 | | 2,404,608. | 1,979,655 | 95,519. | 329,434 | 12,073,130. | 8,437,344 |
| 伊 豫 | | 2,238,841. | 2,045,022 | 62,870. | 130,949 | 20,203,180. | 15,967,021. |
| 瓦 多 | | 4,531,702 | 3,998,005 | 141,089. | 392,608 | 44,611,723. | 20,541,492. |
| 西 宇 和 | | 2,847,813.76 | 2,605,062 | 121,367.40 | 121,384.36 | 15,628,256.20 | 11,312,291 |
| 東 宇 和 | | 3,417,174 | 2,852,093 | 191,857. | 373,224 | 17,994,910. | 14,722,864 |
| 北 宇 和 | | 4,312,218 | 3,541,766. | 325,312 | 445,140 | 26,710,297. | 19,655,052 |
| 南 宇 和 | | 2,107,711 | 1,838,431 | 112,521 | 156,759 | 10,165,554. | 8,182,500 |
| 松 山 | | 2,314,060.20 | 1,784,534.70 | 52,675 | 476,851 | 29,228,441.24 | 23,037,570.24 |
| 今 治 | | 766,884. | 665,672 | 22,622 | 78,590 | 11,544,820. | 8,846,478. |
| 西 條 | | 726,483. | 625,729 | 22,420 | 78,334 | 9,480,138. | 8,525,097. |
| 新 居 浜 | | 890,087. | 669,326 | 24,896 | 195,865 | 10,457,753. | 7,830,164. |
| 八 幡 浜 | | 528,875. | 485,333 | 13,542 | 30,000 | 7,012,550. | 5,724,104. |
| 宇 和 島 | | 1,107,280 | 655,199 | 27,581 | 424,500 | 11,195,437. | 9,048,670. |
| 計 | | 46,928,514.22 | 39,409,849.78 | 2,195,529.48 | 5,323,134.96 | 335,711,046.73 | 262,019,308.52 |

No 1.

| 費 需要費 | B 教 授 費 | | | | C 管 理 費 | | | |
|--------------|----------------|----------------|---------------|---------------|------------|------------|---------|------------|
| | 計 | 給 与 費 | 旅 費 | 需要費 | 計 | 給 与 費 | 旅 費 | 需要費 |
| 677,198 | 32,372,279.33 | 25,346,983.58 | 741,795.30 | 6283,500.45 | 2,079,070 | 1,063,216 | 4,000 | 1,011,854 |
| 883,144.60 | 38,589,205.98 | 30,242,200.70 | 997,938.86 | 7,349,066.40 | 1,922,130 | 1,073,126 | 38,533 | 810,471 |
| 193,766 | 17,896,953. | 13,503,319. | 410,275. | 3,983,359. | 1,063,557 | 468,677 | 1,900 | 592,980. |
| 139,113 | 13,818,309. | 11,089,964. | 369,680. | 2,358,665. | 1,627,618 | 1,210,158 | 3,700 | 413,760 |
| 196,275 | 26,878,110. | 20,004,194. | 914,984. | 5,958,932. | 2,481,957 | 1,100,099 | 56,830 | 1,325,028 |
| 329,434 | 12,073,130. | 8,437,344 | 225,375.8 | 1,381,828. | 989,904 | 438,446 | 7,384 | 544,074 |
| 130,949 | 20,203,180. | 15,967,021. | 371,374 | 3,864,785. | 1,304,022 | 471,760 | 2,500 | 829,762 |
| 392,608 | 4,461,723. | 20,541,492. | 672,369. | 3,227,862. | 1,138,779 | 418,710 | 112,087 | 607,982 |
| 121,384.36 | 15,628,256.20 | 11,312,291 | 513,699.20 | 3,802,266. | 1,063,245 | 521,289 | 500 | 541,456 |
| 373,224 | 17,994,910. | 14,722,864 | 613,054. | 2,658,992. | 1,725,146 | 1,230,769 | 4,600 | 489,777 |
| 445,140 | 26,710,297. | 19,655,052 | 1,084,852. | 5,970,393. | 2,068,322 | 871,348 | 74,983 | 1,121,991 |
| 156,759 | 10,165,554. | 8,182,500 | 419,126. | 1,563,928. | 798,758 | 485,599 | 10,000 | 303,159 |
| 476,851 | 29,228,441.24 | 23,037,570.24 | 491,982. | 5,698,889 | 2,471,616 | 1,648,680 | 13,600 | 809,336 |
| 78,590 | 11,544,820. | 8,846,478. | 162,057. | 2,536,285 | 959,542 | 759,952 | 4,600 | 194,990 |
| 78,334 | 9,480,138. | 8,525,097. | 205,499. | 749,542 | 664,547 | 464,708 | 1,450 | 198,389 |
| 195,865 | 10,457,753. | 7,830,164. | 272,888. | 2,354,701 | 1,513,428 | 997,666 | 18,570 | 497,192. |
| 30,000 | 7,012,550. | 5,724,104. | 93,505. | 1,194,941 | 580,156 | 452,271 | 26,184 | 101,701 |
| 424,500 | 11,195,437. | 9,048,670. | 198,300. | 1,948,467 | 601,008 | 440,635 | 2,480 | 157,893 |
| 5,323,134.96 | 335,711,046.73 | 262,019,308.52 | 10,807,336.36 | 62,886,401.85 | 25,052,805 | 14,117,109 | 383,901 | 16,551,795 |

中学校 學校經費調 No.2

| 項目 郡市別 | D 維持費 | | E 固定費 | | (ABCDE) 經常費 | |
|-----------|---------------|---------------|------------|-----------|----------------|----------------|
| | 計 | 需要費 | 計 | 需要費 | 計 | 給与費 |
| 温 泉 | 1,305,757 | 1,305,757 | 318,194 | 318,194 | 41,526,986.03 | 30,928,109.58 |
| 越 智 | 908,721 | 908,721 | 42,495 | 42,495 | 47,148,677.02 | 35,796,205.28 |
| 周 桑 | 613,217 | 613,217 | 23,448 | 23,448 | 21,768,833 | 15,901,946 |
| 新 居 | 720,388 | 720,388 | 167,000 | 167,000 | 18,189,825 | 13,746,699 |
| 宇 摩 | 1,180,080 | 1,180,080 | 164,082 | 164,082 | 34,273,027 | 24,192,999 |
| 上 浮 穴 | 64,940 | 64,940 | 112,880 | 112,880 | 15,645,462 | 10,855,445 |
| 伊 豫 | 822,367 | 822,367 | 57,785 | 57,785 | 24,626,195 | 18,483,803 |
| 北 見 | 847,587 | 847,587 | 60,192 | 60,192 | 31,039,983 | 24,958,207 |
| 西 宇 和 | 523,373 | 523,373 | 12,600 | 12,600 | 20,075,287.96 | 14,438,642 |
| 東 宇 和 | 393,562 | 393,562 | 104,888 | 104,888 | 23,635,680 | 18,805,726 |
| 北 宇 和 | 802,334 | 802,334 | 32,000 | 32,000 | 33,925,171 | 24,068,166 |
| 南 宇 和 | 280,786 | 280,786 | 6,100 | 6,100 | 13,358,909 | 10,506,530 |
| 松 山 | 657,756.01 | 657,756.01 | 106,672 | 106,672 | 34,778,545.95 | 26,470,784.94 |
| 今 治 | 210,500 | 210,500 | | | 13,481,746 | 10,272,102. |
| 西 條 | 121,208 | 121,208 | 17,000 | 17,000 | 11,009,376 | 7,615,534. |
| 新 居 浜 | 642,567 | 642,567 | | | 13,503,835 | 9,497,156. |
| 八 幡 浜 | 119,600 | 119,600 | 10,800 | 10,800 | 8,251,981 | 6,661,708. |
| 宇 和 島 | 111,000 | 111,000 | 170,500 | 170,500 | 13,185,225 | 10,144,504. |
| 計 | 10,325,743.01 | 10,325,743.01 | 1,406,636. | 1,406,636 | 419,424,744.26 | 315,544,267.30 |

No. 2

| 定費 需要費 | (ABCDE) 計 | 經常費計 | | | 年間平均 生徒数 | 生徒一人 当經費 | 并臨時施設費 | | |
|-----------|----------------------------|----------------|---------------------------|---------------------------|-------------|-------------|-------------|-------------|------------|
| | | 給車費 | 旅費 | 需要費 | | | 計 | 施設費 | 備品費 |
| 318,194 | 41,526,986.03 | 30,928,109.58 | 1,002,373 | 9,596,503. ²⁵ | 8,566 | 4,848 | 33,627,953 | 30,221,775 | 3,406,178 |
| 42,495 | 47,148,677.02 | 35,796,205.28 | 1,358,573 ²⁴ | 9,993,898. | 10,254 | 4,598 | 26,612,603 | 24,783,175 | 1,829,428 |
| 23,448 | 21,768,833 | 15,901,946 | 460,117 | 5,406,770. | 4,543 | 4,792 | 14,416,398 | 13,743,883 | 672,515 |
| 167,000 | 18,189,825 | 13,746,699 | 444,200 | 3,798,926. | 4,221 | 4,309 | 8,411,458 | 7,501,558 | 909,900 |
| 164,082 | 34,273,027 | 24,192,999 | 1,255,631 | 8,824,397. | 7,022 | 4,881 | 19,702,472 | 18,495,451 | 1,207,021 |
| 112,880 | 15,645,462 | 10,855,445 | 2,356,861 | 2,433,156. | 3,235 | 4,836 | 25,085,672 | 24,623,372 | 462,300 |
| 57,785 | 24,626,195 | 18,482,803 | 476,744 | 5,705,648. | 5,789 | 4,254 | 5,255,400 | 4,655,100 | 600,300 |
| 60,192 | 31,039,983 | 24,958,207 | 945,545 | 5,136,231. | 7,264 | 4,273 | 20,451,750 | 19,510,450 | 941,300 |
| 12,600 | 20,075,287.96 | 14,438,642 | 635,566. ⁶⁰ | 5,001,079 ³⁶ | 5,785 | 3,470 | 21,666,199 | 20,840,899 | 825,300 |
| 104,888 | 23,635,680 | 18,805,726 | 809,511 | 4,020,443. | 4,951 | 4,774 | 14,665,770 | 13,796,435 | 869,335 |
| 32,000 | 33,925,171 | 24,068,166 | 1,485,147 | 8,371,858 | 8,059 | 4,210 | 32,159,916 | 31,365,786 | 794,130 |
| 6,100 | 13,358,909 | 10,506,530 | 541,647 | 2,310,732 | 3,424 | 3,902 | 4,034,202 | 3,623,580 | 410,622 |
| 106,672 | 34,778,545.95 | 26,470,784.94 | 558,257 | 7,749,504. ⁰¹ | 7,198 | 4,832 | 5,964,777 | 4,300,777 | 1,664,000 |
| | 13,481,746 | 10,272,102. | 189,279 | 3,020,365 | 2,969 | 4,541 | 5,885,547 | 5,616,957 | 268,600 |
| 17,000 | 11,009,376 | 9,615,534. | 229,369 | 1,164,473 | 2,875 | 3,829 | 2,286,395 | 1,814,895 | 465,500 |
| | 13,503,835 | 9,497,156. | 316,354 | 3,690,325 | 2,984 | 4,525 | 3,510,000 | 3,055,000 | 455,000 |
| 10,800 | 8,251,981 | 6,661,708. | 133,231 | 1,457,042 | 2,331 | 3,540 | 330,000 | 250,000 | 80,000 |
| 70,500 | 13,185,225 | 10,144,504. | 228,361 | 2,812,360 | 3,255 | 4,051 | 6,182,996 | 6,012,955 | 170,041 |
| 406,636 | 419,424,744. ²⁶ | 315,544,267.30 | 13,386,766. ⁸⁴ | 90,493,710. ⁸² | 94,725 | 4,428 | 250,243,518 | 234,212,048 | 16,031,470 |

全日制高等学校 学校経費調 No 1

| 全日制 | A 一般統轄費 | | | | B 教 | |
|-----|--------------------------|--------------------------|-------------------------|-------------------------|---------------------------|---------------------------|
| | 計 | 給与費 | 旅費 | 需要費 | 計 | 給与 |
| 川之江 | 360,901 | 308,327 | 21,352 | 31,222 | 2,283,160 | 2,122,255 |
| 三島 | 622,392 | 480,392 | 97,000 | 35,000 | 5,320,214 | 4,582,539 |
| 小島 | 174,551 | 104,531 | 33,500 | 36,520 | 1,910,840 | 1,650,233 |
| 新居浜 | 836,364 | 705,960 | 54,454 | 75,950 | 6,168,228 | 5,278,828 |
| 新居浜 | 877,418 | 623,098 ⁴⁰ | 88,105 | 166,215 ⁶⁰ | 5,033,866 ⁸⁰ | 4,210,428 |
| 西條 | 446,475 | 401,580 | 23,750 | 19,145 | 2,514,390 | 2,227,948 |
| 西條 | 895,822 | 465,391 | 37,107 | 193,325 | 6,488,714 ⁶⁴ | 5,677,644 |
| 田原 | 538,488 | 380,232 | 62,879 | 115,377 | 2,763,934 | 2,254,267 |
| 小治政 | 283,000 | 205,000 | 29,000 | 49,000 | 1,453,272 | 1,328,975 |
| 今治 | 566,215 | 521,225 | 16,340 | 28,650 | 6,128,547 | 5,096,584 |
| 今治 | 496,401 ²² | 413,804 ²² | 34,694 | 47,902 ⁶⁰ | 3,317,229 | 2,981,686 |
| 今治 | 482,247 | 407,310 | 42,504 | 32,433 | 3,398,644 | 3,075,581 |
| 松山 | 1,377,565 | 1,006,678 | 86,520 | 218,367 | 15,598,136 | 13,091,731 |
| 松山 | 817,365 | 737,273 | 33,933 | 146,159 | 8,693,573 | 6,946,731 |
| 松山 | 977,779 | 751,038 | 83,374 | 143,367 | 9,542,002 | 8,601,064 |
| 上野 | 304,118 | 238,776 | 19,342 | 46,000 | 1,802,828 | 1,655,320 |
| 大内 | 1,130,716 ⁶¹ | 742,904 ²⁷ | 102,944 | 284,868 ³⁴ | 6,542,989 ⁴⁸ | 5,571,012 |
| 長門 | 409,818 | 300,310 | 64,965 | 44,543 | 1,513,330 | 1,146,244 |
| 八幡 | 372,100 | 273,000 | 37,300 | 61,800 | 1,439,009 | 1,302,875 |
| 三川 | 1,155,778 | 743,984 | 113,054 | 298,740 | 6,614,708 | 6,217,716 |
| 三川 | 568,886 | 423,984 | 100,000 | 45,102 | 2,081,192 | 1,825,260 |
| 三川 | 352,845 | 258,996 | 57,954 | 35,895 | 2,280,341 | 1,901,932 |
| 宇野 | 241,500 | 186,500 | 20,000 | 35,000 | 2,117,520 | 2,000,000 |
| 宇野 | 315,086 | 238,096 | 31,249 | 45,741 | 1,424,857 | 1,302,483 |
| 宇野 | 787,434 | 524,346 | 99,403 | 163,685 | 6,160,654 | 5,687,708 |
| 宇野 | 740,200 | 581,200 | 84,000 | 75,000 | 5,254,500 | 4,917,970 |
| 宇野 | 497,550 | 357,632 | 92,805 | 47,063 | 2,499,475 | 2,086,090 |
| 宇野 | 404,033 | 273,229 | 36,780 | 93,984 | 2,171,762 | 1,931,649 |
| 宇野 | 477,397 | 358,283 | 44,286 | 74,828 | 2,085,948 | 1,820,700 |
| 計 | 17,362,496 ⁶³ | 13,026,070 ⁰⁹ | 1,646,594 ⁰⁰ | 2,689,832 ⁵⁴ | 124,603,884 ⁸² | 108,291,662 ⁴⁰ |

No 1

| 費 | 需要費 | B 教 授 費 | | | | C 管 理 費 | | | |
|----|-----------------------|-------------------------|-------------------------|---------|-----------------------|-------------------------|-----------------------|--------|-----------------------|
| | | 計 | 給与費 | 旅費 | 需要費 | 計 | 給与費 | 旅費 | 需要費 |
| 2 | 31,222 | 2,283,160 | 2,122,255 | 56,226 | 104,679 | 258,582 | 111,752 | 1,300 | 145,530 |
| 00 | 35,000 | 5,320,214 | 4,582,539 | 194,675 | 543,000 | 565,094 | 333,591 | 0 | 231,503 |
| 00 | 36,520 | 1,910,840 | 1,650,233 | 92,307 | 168,300 | 452,266 | 337,286 | 0 | 114,880 |
| 54 | 75,750 | 6,168,228 | 5,278,828 | 174,457 | 714,943 | 577,953 | 393,134 | 0 | 186,819 |
| 05 | 166,265 ⁶⁰ | 5,033,866 ⁸⁰ | 4,210,428 ⁹⁵ | 164,711 | 658,706 ⁸² | 1,458,358 ³² | 568,595 ³⁰ | 8,012 | 881,751 ⁰² |
| 50 | 19,145 | 2,514,390 | 2,227,948 | 39,830 | 226,612 | 452,885 | 390,294 | 0 | 62,591 |
| 07 | 193,225 | 6,488,714 ⁶⁴ | 5,677,644 ⁶⁶ | 94,272 | 716,798 | 616,792 | 405,499 | 10,400 | 200,893 |
| 79 | 115,377 | 2,763,934 | 2,254,267 | 78,843 | 430,824 | 503,477 | 294,672 | 0 | 208,805 |
| 00 | 49,000 | 1,453,272 | 1,328,945 | 51,000 | 73,327 | 237,920 | 132,368 | 0 | 105,552 |
| 10 | 25,550 | 6,128,547 | 5,096,584 | 230,264 | 801,699 | 471,244 | 279,197 | 0 | 192,047 |
| 94 | 47,902 ⁰⁰ | 3,317,229 | 2,981,686 | 83,558 | 251,785 ⁷⁰ | 503,637 ²⁰ | 255,489 | 2,074 | 246,074 ⁷⁰ |
| 04 | 32,433 | 3,398,644 | 3,075,580 | 144,252 | 178,812 | 318,536 | 198,050 | 0 | 120,436 |
| 20 | 218,367 | 15,598,136 | 13,091,739 | 540,510 | 1,965,887 | 1,621,142 | 990,663 | 15,000 | 615,479 |
| 23 | 146,159 | 8,693,573 | 6,946,731 | 299,498 | 1,447,324 | 975,869 | 712,902 | 0 | 262,967 |
| 74 | 143,367 | 9,542,002 | 8,661,064 | 226,798 | 714,140 | 940,020 | 619,746 | 16,059 | 304,005 |
| 42 | 46,000 | 1,802,828 | 1,655,320 | 24,000 | 103,508 | 248,042 | 231,542 | 2,500 | 14,000 |
| 04 | 284,868 ³⁴ | 6,542,989 ⁶⁸ | 5,571,012 ⁹⁰ | 226,379 | 745,597 ⁸⁵ | 1,167,241 ³⁷ | 777,584 ⁶⁰ | 5,704 | 363,952 ⁶⁷ |
| 15 | 44,543 | 1,513,330 | 1,146,244 | 101,785 | 265,301 | 276,982 | 220,782 | 0 | 56,200 |
| 00 | 61,800 | 1,439,009 | 1,302,895 | 85,434 | 50,700 | 178,597 | 110,543 | 5,000 | 63,054 |
| 4 | 298,740 | 6,514,708 | 6,217,716 | 103,454 | 293,538 | 763,361 | 484,130 | 0 | 279,231 |
| 00 | 45,102 | 2,081,192 | 1,825,260 | 185,000 | 270,832 | 462,351 | 400,261 | 1,800 | 60,190 |
| 4 | 35,895 | 2,280,341 | 1,901,932 | 62,897 | 315,512 | 180,942 | 93,540 | 390 | 87,012 |
| 0 | 35,000 | 2,117,520 | 2,000,000 | 42,520 | 75,000 | 588,938 | 452,040 | 0 | 136,898 |
| 9 | 115,741 | 1,414,857 | 1,200,483 | 85,269 | 39,005 | 380,380 | 319,487 | 1,000 | 59,893 |
| 3 | 165,655 | 6,160,654 | 5,687,708 | 139,862 | 332,884 | 869,960 | 621,410 | 0 | 248,550 |
| 00 | 75,000 | 5,254,500 | 4,917,700 | 75,000 | 261,600 | 618,000 | 349,000 | 10,000 | 259,000 |
| 5 | 47,063 | 2,499,495 | 2,086,090 | 134,530 | 278,875 | 615,547 | 393,201 | 375 | 221,911 |
| 0 | 93,984 | 2,171,762 | 1,931,649 | 76,579 | 163,534 | 385,380 | 163,611 | 78 | 221,691 |
| 6 | 74,828 | 2,085,948 | 1,820,700 | 88,442 | 176,806 | 428,801 | 296,778 | 0 | 132,123 |
| 00 | 2,689 | 124,603 | 108,291 | 3,902 | 12,409 | 17,120 | 10,957 | 79 | 6,083 |
| | 832,54 | 884,82 | 662,49 | 452,- | 770,33 | 298,29 | 547,90 | 702,- | 048,39 |

全日制高等学校 学校経費調 No.2

| 項目 全欄 | D 維持費 | | E 固定費 | | (ABCDE) 経常費計 | | |
|----------|------------------------------|------------------------------|-------------|-------------|-------------------------------|--------------------------------|---------------|
| | 計 | 需要費 | 計 | 需要費 | 計 | 給与費 | 旅費 |
| 川之江 | 162,930 | 162,930 | 1,000 | 1,000 | 3,066,573 | 2,542,334 | 78,878 |
| 三島 | 276,000 | 276,000 | 30,200 | 30,200 | 6,813,900 | 5,406,522 | 291,675 |
| 小富士 | 109,000 | 109,000 | 0 | 0 | 2,646,657 | 2,092,150 | 125,807 |
| 新居次西 | 188,304 | 188,304 | 0 | 0 | 7,772,849 | 6,377,922 | 228,911 |
| 新居次東 | 323,213 ⁸⁰ | 323,213 ⁸⁰ | 3,000 | 3,000 | 7,695,907 ⁸² | 5,402,122 ⁶⁵ | 260,828 |
| 西條南 | 92,456 | 92,456 | 18,544 | 18,544 | 3,522,750 | 3,019,822 | 63,580 |
| 西條北 | 167,883 | 167,883 | 0 | 0 | 7,969,22 ⁶⁴ | 6,548,534 ⁶⁴ | 141,779 |
| 丹原 | 90,074 | 90,074 | 0 | 0 | 3,915,973 | 2,929,171 | 141,722 |
| 小松 | 30,000 | 30,000 | 0 | 0 | 2,004,107 | 1,666,313 | 80,000 |
| 今治西 | 505,578 | 505,578 | 0 | 0 | 7,671,584 | 5,900,106 | 246,604 |
| 今治北 | 90,040 | 90,040 | 0 | 0 | 4,407,308 ⁴² | 3,650,979 ⁴² | 120,326 |
| 今治南 | 243,595 | 243,595 | 0 | 0 | 4,443,122 | 3,680,940 | 186,756 |
| 松山南 | 280,573 | 280,573 | 300 | 300 | 18,811,716 | 15,089,080 | 642,030 |
| 松山北 | 798,116 | 798,116 | 3,780 | 3,780 | 11,388,703 | 8,396,906 | 333,431 |
| 松山東 | 344,358 | 344,358 | 17,188 | 17,188 | 11,821,347 | 9,972,048 | 326,241 |
| 上浮穴 | 61,500 | 61,500 | 0 | 0 | 2,416,488 | 2,125,638 | 45,842 |
| 大洲 | 307,810 ⁴⁵ | 307,810 ⁴⁵ | 27,328 | 27,328 | 9,176,086 ⁰¹ | 7,111,501 ⁷⁷ | 335,627 |
| 内子 | 455,881 | 455,881 | 13,352 | 13,352 | 2,669,363 | 1,667,236 | 166,750 |
| 長浜 | 611,000 | 611,000 | 0 | 0 | 2,600,706 | 1,686,418 | 127,734 |
| 八幡浜 | 286,654 | 286,654 | 15,000 | 15,000 | 8,835,501 | 7,445,830 | 216,508 |
| 川之石 | 60,143 | 60,143 | 3,316 | 3,316 | 3,175,888 | 2,449,505 | 286,800 |
| 三瓶 | 256,327 | 256,327 | 0 | 0 | 3,070,455 | 2,254,468 | 121,241 |
| 宇和 | 45,000 | 45,000 | 0 | 0 | 2,992,958 | 2,638,540 | 62,520 |
| 野村 | 17,800 | 17,800 | 0 | 0 | 2,138,123 | 1,858,066 | 117,618 |
| 宇和島南 | 96,735 | 96,735 | 23,536 | 23,536 | 7,938,319 | 6,833,664 | 237,265 |
| 宇和島東 | 180,000 | 180,000 | 24,100 | 24,100 | 6,816,700 | 5,848,100 | 169,000 |
| 北宇和 | 169,292 | 169,292 | 9,386 | 9,386 | 3,791,270 | 2,836,973 | 227,710 |
| 吉田 | 53,017 | 53,017 | 1,692 | 1,692 | 3,015,884 | 2,368,529 | 113,437 |
| 南宇和 | 40,806 | 40,806 | 1,300 | 1,300 | 3,034,252 | 2,475,761 | 132,728 |
| 計 | 6,344, 086. ²⁵ | 6,344, 086. ²⁵ | 192, 922 | 192, 922 | 165,623, 687 ⁹⁹ | 132,275, 280. ⁴⁸ | 5,628, 748 |

| (ABCDE) 計 | 經常費計 | | | 編制地 生徒數 | 生徒一人當 經費 | F 臨時施設費 | | |
|-------------------------|-------------------------|---------|-------------------------|------------|-------------|-----------|-----------|---------|
| | 給与費 | 旅費 | 需要費 | | | 計 | 施設費 | 備品費 |
| 3,066,573 | 2,542,334 | 78,878 | 445,361 | 290 | 10,574 | 0 | 0 | 0 |
| 6,813,900 | 5,406,522 | 291,675 | 1,115,703 | 662 | 10,293 | 242,854 | 273,538 | 69,316 |
| 2,646,657 | 2,092,150 | 125,807 | 428,700 | 230 | 11,507 | 3,000,000 | 3,000,000 | 0 |
| 7,772,849 | 6,377,922 | 228,911 | 1,166,016 | 781 | 9,952 | 0 | 0 | 0 |
| 7,695,907 ²² | 5,402,122 ⁶⁵ | 260,828 | 2,032,957 ²² | 785 | 9,804 | 500,000 | 450,000 | 50,000 |
| 3,522,750 | 3,019,822 | 63,580 | 439,348 | 368 | 9,573 | 209,200 | 153,200 | 56,000 |
| 7,969,212 ⁶⁴ | 6,548,534 ⁶⁴ | 141,779 | 1,278,899 | 1,166 | 6,835 | 0 | 0 | 0 |
| 3,915,973 | 2,929,171 | 141,722 | 845,080 | 469 | 8,350 | 1,588,000 | 1,588,000 | 0 |
| 2,004,107 | 1,666,313 | 80,000 | 257,879 | 280 | 7,158 | 1,500,000 | 1,400,000 | 100,000 |
| 7,671,584 | 5,900,106 | 246,604 | 1,524,874 | 987 | 7,773 | 71,874 | 59,774 | 12,100 |
| 4,407,308 ⁴² | 3,650,979 ⁴² | 120,326 | 636,003 | 637 | 6,919 | 23,500 | 23,500 | 0 |
| 4,443,022 | 3,680,940 | 186,756 | 575,326 | 520 | 8,544 | 0 | 0 | 0 |
| 18,811,716 | 15,089,080 | 642,030 | 3,080,606 | 1,660 | 11,322 | 335,151 | 160,175 | 174,976 |
| 11,388,703 | 8,396,906 | 333,431 | 2,658,366 | 1,230 | 9,259 | 264,300 | 179,100 | 85,200 |
| 11,821,347 | 9,972,048 | 326,241 | 1,523,058 | 1,760 | 6,717 | 3,237,610 | 2,742,900 | 294,710 |
| 2,416,488 | 2,125,638 | 45,842 | 245,008 | 256 | 9,439 | 0 | 0 | 0 |
| 9,176,086 ⁰¹ | 7,111,501 ²² | 335,027 | 1,729,557 ²² | 909 | 10,095 | 1,067,000 | 1,040,700 | 26,300 |
| 2,669,363 | 1,667,336 | 166,750 | 835,277 | 255 | 10,468 | 444,000 | 179,000 | 265,000 |
| 2,600,706 | 1,686,418 | 127,734 | 786,554 | 200 | 13,004 | 349,639 | 349,639 | 0 |
| 8,835,501 | 7,445,830 | 216,508 | 1,173,163 | 996 | 8,871 | 0 | 0 | 0 |
| 3,175,888 | 2,449,505 | 286,800 | 439,583 | 263 | 12,076 | 2,364,961 | 2,279,500 | 85,461 |
| 3,070,455 | 2,254,468 | 121,241 | 694,746 | 425 | 7,225 | 1,225,344 | 1,198,800 | 26,544 |
| 2,992,958 | 2,638,540 | 62,520 | 291,898 | 620 | 4,827 | 0 | 0 | 0 |
| 2,138,123 | 1,858,066 | 117,618 | 162,439 | 217 | 9,853 | 3,566,000 | 3,236,000 | 330,000 |
| 7,938,319 | 6,833,664 | 237,265 | 867,390 | 927 | 8,563 | 0 | 0 | 0 |
| 6,816,700 | 5,848,100 | 169,000 | 799,600 | 1,020 | 6,683 | 186,000 | 80,000 | 106,000 |
| 3,791,270 | 2,836,973 | 227,710 | 726,587 | 419 | 9,048 | 1,912,709 | 1,512,709 | 400,000 |
| 3,015,884 | 2,368,529 | 113,437 | 533,918 | 215 | 14,027 | 0 | 0 | 0 |
| 3,034,252 | 2,475,761 | 132,728 | 425,763 | 410 | 7,401 | 1,000,000 | 1,000,000 | 0 |
| 65,623, | 132,275, | 5,628, | 27,719, | 88, | 8,737 | 23,188, | 21,106, | 2,081, |
| 687 ⁹⁹ | 280, ⁴⁸ | 748 | 659, ⁵¹ | 956 | | 142 | 535 | 607 |

定時制高校 学校経費調

NO. 1

| 校名 | 項目 | A 一般統轄費 | | | | B 散校 | | |
|----|----|-------------------------|-----------|-----------------------|-------------------------|--------------------------|--------------------------|------------------------|
| | | 計 | 給子費 | 旅費 | 需費 | 計 | 給子費 | 旅費 |
| 川 | 江 | 202,004 | 138,864 | 15,360 | 47,780 | 509,374 | 427,034 | 33,840 |
| 三 | 島 | 78,007 | 46,617 | 10,508 | 20,882 | 305,722 | 278,272 | 6,500 |
| 小 | 士 | - | - | - | - | - | - | - |
| 新 | 西 | 502,341 | 252,342 | 18,182 | 231,817 | 1,877,050 | 1,633,003 | 133,546 |
| 新 | 東 | 119,589 | 100,963 | 9,250 | 9,376 | 636,805 | 424,888 | 62,190 |
| 西 | 北 | 157,803 | 87,142 | 3,470 | 67,191 | 1,003,930 | 907,524 | 13,904 |
| 丹 | 北 | 138,551 | 81,264 | 8,287 | 49,000 | 2,217,715 | 1,362,722 | 59,270 |
| 小 | 柏 | 145,022 | 121,489 | 5,589 | 17,944 | 908,607 | 786,644 | 28,228 |
| 小 | 西 | 152,895 | 134,800 | 2,595 | 15,500 | 1,216,153 | 1,012,816 | 55,980 |
| 柏 | 南 | 246,529 | 156,529 | 30,000 | 80,000 | 1,856,190 | 1,634,190 | 88,000 |
| 柏 | 北 | 68,842 | 29,400 | 18,000 | 21,442 | 661,037 | 376,160 | 139,544 |
| 柏 | 東 | 201,121 | 111,857 | 12,000 | 77,264 | 1,458,737 | 1,306,479 | 75,824 |
| 上 | 九 | - | - | - | - | - | - | - |
| 大 | 洲 | 118,390 ₁₆ | 50,322 | 32,818 | 35,250 ₁₆ | 465,860 ₉₁ | 294,253 ₁₈ | 123,145 |
| 内 | 子 | 85,967 | 60,298 | 3,284 | 22,385 | 612,489 | 330,730 | 39,929 |
| 長 | 茨 | 61,261 | 42,560 | 7,385 | 11,316 | 638,552 | 512,400 | 25,854 |
| 八 | 茨 | 146,031 | 77,849 | 14,790 | 53,392 | 472,577 | 415,146 | 32,689 |
| 川 | 石 | 53,622 | 13,250 | 87,600 | 31,612 | 229,700 | 210,884 | 883 |
| 宇 | 和 | 210,972 | 68,060 | 15,300 | 127,612 | 1,524,501 | 959,416 | 246,200 |
| 野 | 村 | 106,650 | 32,400 | 35,765 | 38,495 | 753,808 | 506,973 | 153,454 |
| 宇 | 南 | 161,982 | 118,999 | 6,296 | 36,687 | 1,409,362 | 1,114,121 | 128,910 |
| 北 | 和 | 96,743 | 19,200 | 3,000 | 74,543 | 424,733 | 280,522 | 59,211 |
| 寺 | 田 | 112,269 | 80,928 | 11,182 | 20,159 | 254,243 | 158,820 | 31,726 |
| 南 | 和 | 109,645 | 69,791 | 24,910 | 14,944 | 727,427 | 534,888 | 122,275 |
| 大 | 島 | 99,932 | 65,600 | 23,776 | 16,556 | 877,567 | 490,874 | 23,776 |
| 向 | 方 | 149,292 | 76,356 | 30,000 | 42,936 | 847,257 | 500,204 | 34,476 |
| 弓 | 剛 | 326,636 | 226,424 | 32,332 | 67,880 | 1,018,703 | 703,295 | 24,008 |
| 大 | 島 | 358,516 ₄₀ | 229,212 | 23,004 ₄₈ | 106,300 | 917,519 ₂₂ | 457,894 | 43,957 ₅ |
| 農 | 設 | 109,038 | 52,284 | 0 | 56,754 | 166,749 | 85,961 | 39,296 |
| 東 | 温 | 360,760 | 240,055 | 8,605 | 112,100 | 823,269 | 610,747 | 19,120 |
| 砥 | 部 | 122,243 | 100,732 | 6,875 | 14,636 | 666,962 | 484,052 | 24,347 |
| 中 | 山 | 347,550 | 257,172 | 25,378 | 65,000 | 570,089 | 452,410 | 15,920 |
| 小 | 田 | 266,961 | 182,196 | 29,765 | 55,000 | 550,689 | 385,754 | 14,900 |
| 三 | 岡 | 258,139 | 211,170 | 33,511 | 13,458 | 793,524 | 727,340 | 38,111 |
| 柏 | 凡 | 138,754 ₄₀ | 88,622 | 22,132 ₄₀ | 28,000 | 598,394 | 419,950 | 32,343 |
| 津 | 島 | 119,828 | 66,134 | 8,940 | 44,754 | 661,153 | 363,360 | 33,176 |
| 計 | | 5,933,896 ₀₄ | 3,690,881 | 541,049 ₈₈ | 1,701,965 ₁₅ | 28,656,410 ₁₃ | 21,230,526 ₁₈ | 2,004,532 ₅ |

NO. 1

| 費 | B 散 | | | | C 管 | | | |
|----|---------------|---------------|--------------|--------------|--------------|--------------|--------|--------------|
| | 計 | 箱 | 旅 | 需 | 計 | 箱 | 旅 | 需 |
| | 費 | 費 | 費 | 費 | 費 | 費 | 費 | 費 |
| 0 | 509,374 | 427,034 | 33,840 | 48,500 | 16,060 | 5,200 | 1,000 | 9,860 |
| 2 | 305,722 | 278,272 | 6,500 | 20,952 | 49,846 | 3,600 | | 46,246 |
| 7 | 1,877,050 | 1,633,003 | 133,546 | 110,501 | 100,104 | 13,800 | | 86,304 |
| 6 | 636,805 | 424,888 | 62,190 | 149,727 | 32,248 | 3,450 | | 28,798 |
| 1 | 1,003,930 | 907,524 | 13,904 | 82,502 | 185,425 | 55,486 | | 129,939 |
| 0 | 2,217,715 | 1,362,722 | 59,270 | 795,723 | 225,619 | 10,000 | | 215,619 |
| 4 | 908,607 | 786,644 | 28,228 | 93,735 | 152,848 | 56,258 | 1,200 | 95,390 |
| 0 | 1,216,153 | 1,012,816 | 55,980 | 147,375 | 134,770 | 45,500 | | 89,270 |
| 0 | 1,856,190 | 1,634,190 | 88,000 | 134,000 | 242,848 | 38,000 | | 204,848 |
| 2 | 661,037 | 376,160 | 139,544 | 145,333 | 52,670 | 12,600 | | 40,070 |
| 4 | 1,458,737 | 1,306,479 | 75,824 | 76,434 | 112,508 | 32,960 | | 79,548 |
| 10 | 465,860.91 | 294,253.18 | 123,145 | 48,462.23 | 37,635.30 | 7,496.20 | 865 | 29,274.10 |
| | 612,489 | 330,730 | 31,929 | 241,830 | 43,815 | 4,200 | | 39,615 |
| | 638,552 | 512,400 | 25,854 | 20,298 | 105,881 | 6,000 | 3,673 | 96,188 |
| | 472,577 | 415,946 | 32,689 | 23,942 | 51,929 | 10,700 | | 41,229 |
| | 229,700 | 210,884 | 883 | 17,933 | 21,237 | 2,950 | | 18,287 |
| | 1,524,501 | 959,416 | 246,200 | 318,885 | 253,156 | 3,500 | | 249,656 |
| | 753,808 | 506,973 | 153,454 | 93,381 | 76,303 | 13,200 | | 63,103 |
| | 1,409,362 | 1,114,121 | 128,910 | 166,295 | 80,781 | 11,400 | | 69,381 |
| | 424,733 | 280,522 | 59,211 | 85,000 | 77,342 | 20,900 | | 56,442 |
| | 254,243 | 158,820 | 31,726 | 63,697 | 88,204 | 18,000 | | 70,204 |
| | 727,427 | 534,888 | 122,275 | 70,264 | 35,500 | | | 35,500 |
| | 877,567 | 490,874 | 23,776 | 362,917 | 54,964 | 41,168 | | 13,796 |
| | 847,257 | 500,204 | 34,476 | 312,577 | 87,050 | 57,264 | | 29,786 |
| | 1,018,703 | 703,295 | 24,008 | 291,400 | 128,780 | 66,780 | | 62,000 |
| | 917,519.22 | 457,894 | 43,957.52 | 415,665.20 | 146,955 | 50,208 | 1,118 | 95,629 |
| | 166,749 | 85,961 | 39,296 | 41,492 | 20,010 | 4,800 | | 15,210 |
| | 823,269 | 610,747 | 19,120 | 193,403 | 165,780 | 71,455 | | 94,325 |
| | 666,962 | 484,052 | 24,347 | 158,563 | 56,572 | 17,928 | | 38,644 |
| | 570,089 | 452,410 | 15,920 | 101,759 | 121,261 | 96,316 | 1,000 | 23,945 |
| | 550,689 | 385,754 | 14,900 | 150,035 | 61,572 | 46,572 | | 15,000 |
| | 793,524 | 727,340 | 38,111 | 28,073 | 117,458 | 42,624 | | 74,834 |
| | 598,394 | 419,950 | 32,343 | 146,101 | 106,630 | 83,654 | 2,500 | 20,476 |
| | 661,153 | 363,360 | 33,176 | 264,617 | 87,740 | 58,410 | | 29,330 |
| | 28,656,410.13 | 21,230,526.15 | 2,004,532.52 | 5,421,351.43 | 3,331,501.30 | 1,012,379.20 | 11,376 | 2,307,746.10 |

定時制高校 学校経費調 No. 2

| | D 維持費 | | E 固定費 | | 経常費 | | | 計(A) |
|------|-----------|-----------|--------|--------|---------------|---------------|--------------|--------|
| | 計 | 需要費 | 計 | 需要費 | 計 | 給与費 | 旅費 | |
| 川之江 | 25,000 | 25,000 | 500 | 500 | 752,938 | 571,098 | 50,200 | 131 |
| 三島 | 10,590 | 10,590 | | | 444,165 | 328,489 | 17,008 | 98 |
| 小富士 | | | | | | | | |
| 新居浜西 | 90,792 | 90,792 | | | 2,570,287 | 1,899,145 | 151,728 | 519 |
| 新居浜東 | 2,520 | 2,520 | | | 790,162 | 529,301 | 71,440 | 190 |
| 西條北 | 8,000 | 8,000 | | | 1,355,158 | 1,050,152 | 17,374 | 287 |
| 丹波 | | | | | 2,581,885 | 1,453,986 | 67,557 | 1,060 |
| 小松 | 85,700 | 85,700 | 2,420 | 2,420 | 1,294,597 | 964,391 | 35,017 | 295 |
| 今治西 | 54,000 | 54,000 | | | 1,557,818 | 1,193,116 | 58,575 | 301 |
| 松山南 | 172,000 | 172,000 | | | 2,517,567 | 1,828,719 | 118,000 | 570 |
| 松山北 | 29,282 | 29,282 | | | 811,831 | 418,160 | 157,544 | 235 |
| 松山東 | | | | | 1,772,366 | 1,451,296 | 87,824 | 233 |
| 上野 | | | | | | | | |
| 大洲 | 13,242 | 13,242 | 4,680 | 4,680 | 639,808.37 | 352,071.38 | 156,828 | 130 |
| 内子 | 91,780 | 91,780 | 7,958 | 7,958 | 842,009 | 395,228 | 43,213 | 403 |
| 長門 | 100,000 | 100,000 | | | 905,694 | 640,960 | 36,932 | 22 |
| 八幡 | 100,604 | 100,604 | | | 771,141 | 504,495 | 47,479 | 219 |
| 川之 | 36,570 | 36,570 | | | 341,129 | 227,084 | 9,643 | 104 |
| 宇和 | 48,680 | 48,680 | | | 2,037,309 | 1,030,976 | 261,500 | 744 |
| 宇和 | | | | | 936,771 | 552,573 | 189,219 | 194 |
| 宇和 | | | | | 1,652,089 | 1,244,520 | 135,206 | 272 |
| 北宇 | 83,000 | 83,000 | | | 681,818 | 320,622 | 62,211 | 298 |
| 吉田 | 5,000 | 5,000 | 27,776 | 27,776 | 487,492 | 257,748 | 42,908 | 186 |
| 南宇 | 11,725 | 11,725 | | | 884,297 | 604,679 | 147,185 | 132 |
| 大島 | 4,534 | 4,534 | | | 1,036,997 | 597,642 | 47,552 | 391 |
| 伯方 | 49,757 | 49,757 | | | 1,133,356 | 633,824 | 64,476 | 435 |
| 弓削 | 35,000 | 35,000 | | | 1,509,119 | 996,497 | 56,340 | 456 |
| 大島 | 3,000 | 3,000 | | | 1,425,988.20 | 737,314 | 68,080 | 620 |
| 農界 | 8,595 | 8,595 | | | 304,392 | 143,045 | 39,296 | 122 |
| 東温 | 162,000 | 162,000 | 1,065 | 1,065 | 1,512,874 | 922,257 | 27,725 | 562 |
| 砥部 | | | | | 845,777 | 602,712 | 31,222 | 211 |
| 中山 | 23,000 | 23,000 | | | 1,061,900 | 805,898 | 42,298 | 213 |
| 小田 | 21,600 | 21,600 | | | 900,822 | 614,522 | 44,665 | 241 |
| 三間 | 17,710 | 17,710 | 8,400 | 8,400 | 1,195,231 | 981,134 | 71,622 | 143 |
| 松丸 | 188,000 | 188,000 | | | 1,031,778.40 | 592,226 | 56,975.40 | 382 |
| 津島 | 31,500 | 31,500 | | | 900,221 | 487,904 | 42,116 | 370 |
| 計 | 1,513,181 | 1,513,181 | 52,799 | 52,799 | 39,487,787.47 | 25,933,786.63 | 2,556,958.40 | 10,997 |

NO. 2

附25.3 讀

| 經 計 | 常 費 | | | 年間平均 生徒數 | 生徒一人 當經費 | 下 臨時施設費 計 | 施設費 | 備品費 |
|--------------|---------------|--------------|-------------------------|-------------|-------------|-----------------|-----------|-----------|
| | 給 与 費 | 旅 費 | 計(ABCDE) 需 要 費 | | | | | |
| 752,938 | 571,098 | 50,200 | 131,640 | 176 | 4,278 | 40,599 | 32,089 | 8,510 |
| 444,165 | 328,489 | 17,008 | 98,668 | 69 | 6,438 | 69,668 | 68,498 | 1,170 |
| 2,570,287 | 1,899,145 | 151,728 | 519,414 | 454 | 5,661 | | | |
| 740,162 | 529,301 | 71,440 | 190,421 | 150 | 5,274 | 5,000 | | 5,000 |
| 1,355,158 | 1,050,152 | 17,374 | 287,632 | 320 | 4,234 | 105,955 | 98,055 | 7,900 |
| 2,581,885 | 1,453,986 | 67,557 | 1,060,342 | 450 | 5,737 | | | |
| 1,294,597 | 964,391 | 35,017 | 295,189 | 281 | 4,607 | | | |
| 1,557,818 | 1,193,116 | 58,575 | 306,127 | 430 | 3,581 | 364,517 | 345,817 | 18,700 |
| 2,517,567 | 1,828,719 | 118,000 | 570,848 | 471 | 5,345 | 297,179 | 141,000 | 156,179 |
| 811,831 | 418,160 | 157,544 | 236,127 | 200 | 4,059 | | | |
| 1,772,366 | 1,451,296 | 87,824 | 233,246 | 377 | 4,572 | 120,000 | 61,370 | 58,630 |
| 639,808.37 | 352,071.38 | 156,828 | 130,908.99 | 155 | 4,127 | | | |
| 842,009 | 395,228 | 43,213 | 403,568 | 152 | 5,539 | | | |
| 905,694 | 640,960 | 36,932 | 227,802 | 150 | 6,037 | 13,000 | | 13,000 |
| 771,141 | 504,495 | 47,479 | 219,167 | 200 | 3,855 | | | |
| 341,129 | 227,084 | 9,643 | 104,402 | 110 | 3,101 | | | |
| 2,037,309 | 1,030,976 | 261,500 | 744,833 | 300 | 6,751 | 121,000 | 121,000 | |
| 936,771 | 552,573 | 189,219 | 194,979 | 248 | 3,777 | | | |
| 1,652,089 | 1,244,520 | 135,206 | 272,363 | 286 | 5,777 | 52,480 | 52,480 | |
| 681,818 | 320,622 | 62,211 | 298,985 | 114 | 5,981 | 100,000 | 20,000 | 80,000 |
| 487,492 | 257,748 | 42,908 | 186,836 | 82 | 5,945 | 186,000 | 126,000 | 60,000 |
| 884,297 | 604,679 | 147,185 | 132,433 | 176 | 5,024 | | | |
| 1,036,997 | 597,642 | 47,552 | 391,803 | 129 | 8,039 | 14,500 | | 14,500 |
| 1,133,356 | 633,824 | 64,476 | 435,056 | 129 | 8,785 | 68,000 | | 68,000 |
| 1,509,119 | 996,497 | 56,340 | 456,280 | 110 | 8,247 | 125,000 | | 125,000 |
| 1,425,988.70 | 737,314 | 68,080 | 620,594.70 | 210 | 6,790 | 97,250 | | 97,250 |
| 304,392 | 143,045 | 39,296 | 122,051 | 47 | 2,597 | | | |
| 512,874 | 922,257 | 27,725 | 562,892 | 159 | 9,509 | 385,800 | 25,000 | 360,800 |
| 845,777 | 602,712 | 31,222 | 211,843 | 104 | 8,132 | | | |
| 661,900 | 805,898 | 42,298 | 213,704 | 90 | 11,799 | 166,000 | 76,000 | 90,000 |
| 900,822 | 614,522 | 44,665 | 241,635 | 100 | 9,008 | | | |
| 195,231 | 981,134 | 71,622 | 142,475 | 163 | 7,332 | 267,419 | | 267,419 |
| 031,778.40 | 592,226 | 56,975.40 | 382,577 | 200 | 5,159 | 30,000 | | 30,000 |
| 900,221 | 487,904 | 42,116 | 370,201 | 121 | 7,440 | 77,000 | 65,000 | 12,000 |
| 487,787.47 | 25,933,786.63 | 2,556,958.40 | 10,997,042.67 | 6,913 | 5,712 | 2,696,367 | 1,222,309 | 1,474,058 |

cej
D
Kyocho No.35

F

273

Date : April 6, 1950
From : Tokushima Prefectural Board of Education
To : Chief of Civil Education Section
of Shikoku Civil Affairs Region
Subject : Report on Researches of School Cost at Each
Kind of School

We here send you the report on researches of school cost
at each kind of school by sampling method.

for Kozaburo Mori
Chief of Guidance Section

Katsutomi Shima
Acting Superintendent
of Education,
Tokushima Pref. B/E.

Tokushima Prefecture Myozai-gun Aihata Elementary School

| Item | Fiscal Year | 1948 Settlement | 1949 Settlement |
|--|-------------|--------------------|--------------------|
| I. Administration | | | |
| 1. Principal Salary | | 68,616 | 110,914 |
| 2. " Travel Expense | | 655 | 6,100 |
| 3. Study Expense | | 16,000 | 44,000 |
| 4. Employee Pay | | 59,864 | 83,300 |
| 5. Office Expense | | 15,000 | 20,000 |
| 6. Office Establishment Expense | | 30,000 | 50,000 |
| Total | | 190,135 | 314,314 |
| II. Instruction Expense | | | |
| 1. Teachers Salary | | 774,419 | 1,297,333 |
| 2. " Travel Expense | | 5,331 | 10,700 |
| 3. Class-room Expense | | 15,500 | 12,000 |
| 4. Pupil Activity Expense | | 12,000 | 18,000 |
| 5. Class-room Establishment Expense | | 48,200 | 131,700 |
| Total | | 855,450 | 1,469,733 |
| III. Management Expense | | | |
| 1. Fuel Expense | | 9,190 | 10,000 |
| 2. Printing Expense | | 10,000 | 8,000 |
| 3. Light Expense | | 5,000 | 5,000 |
| 4. Communication & Transportation Expense | | 5,000 | 5,000 |
| 5. Miscellaneous | | 32,000 | 13,000 |
| Total | | 61,190 | 41,000 |

IV. Maintenance Expense

| | | |
|--------------------------------|--------|--------|
| 1. Slight Repair Expense | 76,000 | 50,000 |
| 2. Necessary materials Expense | 1,030 | 5,000 |
| 3. Miscellaneous | | |

| | | |
|-------|--------|--------|
| Total | 77,030 | 55,000 |
|-------|--------|--------|

| | | |
|-------------|------------------|------------------|
| Whole Total | <u>1,183,805</u> | <u>1,880,047</u> |
|-------------|------------------|------------------|

| | | |
|----------------------------|-----|-----|
| Number of Pupils | 593 | 595 |
| (Average Daily Attendance) | 580 | 582 |

| | | |
|---|----------|----------|
| Pupil Cost (Education Expense per one pupil) | 1,996.30 | 3,159.74 |
|---|----------|----------|

U.S.

Tokushima Prefecture ~~Myosai-gun~~ Aihata Secondary School
Itano-gun Matsukohimo

| Item | Fiscal Year . 1948 Settlement | 1949 Settlement |
|--|-------------------------------------|--------------------|
| I. Administration | | |
| 1. Principal Salary | 102,409 | 138,487 |
| 2. " Travel Expense | 1,290 | 2,250 |
| 3. Study Expense | 1,000 | 17,000 |
| 4. Employee Pay | 6,400 | 31,404 |
| 5. Office Expense | 5,341 | 24,000 |
| 6. Office establishment expense | | 5,950 |
| 7. Miscellaneous allowance & Pay | | 7,500 |
| Total | 125,440 | 226,591 |
| II. Instruction expense | | |
| 1. Teachers Salary | 858,652 | 994,486 |
| 2. " Travel expense | 6,880 | 18,874 |
| 3. Class-room expense | 31,100 | 19,000 |
| 4. Pupil Activity Expense | 37,097 | 219,500 |
| 5. Class-room establishment expense | 244,001 | 145,000 |
| Total | 1,177,730 | 1,396,860 |
| III. Management expense | | |
| 1. Fuel expense | 965 | 7,000 |
| 2. Printing expense | 39,935 | 16,600 |
| 3. Light expense | 0 | 3,000 |
| 4. Communication & Transportation Expense | 0 | 9,094 |
| 5. Miscellaneous | 7,316 | |
| Total | 48,216 | 35,694 |

| | | |
|--------------------------------|---|-------|
| IV. Maintenance Expense | | 5,000 |
| 1. Slight Repair Expense | 0 | |
| 2. Necessary materials expense | 0 | |
| 3. Miscellaneous | 0 | |
| Total | 0 | 5,000 |

| | | |
|-------------|------------------|------------------|
| Whole Total | <u>1,351,386</u> | <u>1,664,145</u> |
|-------------|------------------|------------------|

| | | |
|---|-------|-------|
| Number of pupils | 330 | 375 |
| (Average daily attendance) | 325 | 370 |
| Pupil Cost (education expense per one pupil) | 4,095 | 4,438 |

Tokushima Prefecture Jonan Upper Secondary School

| Item | Fiscal Year | 1949 Settlement |
|---|-------------|--------------------|
| I. Administration | | |
| 1. Principal Salary | | 144,976 |
| 2. " Travel expense | | 25,432 |
| 3. Study expense | | 130,880 |
| 4. Business man Salary | | 157,203 |
| 5. Employee Expense | | 258,666 |
| 6. Office Expense | | 325,081 |
| 7. Office establishment expense | | 4,690 |
| 8. Miscellaneous allowance & pay | | 27,900 |
| Total | | 1,074,828 |
| II. Instruction Expense | | |
| 1. Teachers Salary | | 2,710,995 |
| 2. " Travel expense | | 74,730 |
| 3. Class-room expense | | 8,000 |
| 4. Pupil Activity Expense | | 449,360 |
| 5. Class-room establishment expense | | 521,327 |
| Total | | 3,764,412 |
| III. Management Expense | | |
| 1. Fuel expense | | 29,800 |
| 2. Printing expense | | 22,940 |
| 3. Light expense | | 8,000 |
| 4. Communication & Transportation Expense | | 43,003 |
| 5. Miscellaneous | | 25,415 |
| Total | | 129,158 |

IV. Maintenance Expense

| | |
|--------------------------|---------|
| 1. Slight Repair Expense | 121,469 |
|--------------------------|---------|

| | |
|-------|---------|
| Total | 121,469 |
|-------|---------|

| | |
|-------------|-------------------------|
| Whole Total | <u><u>5,089,867</u></u> |
|-------------|-------------------------|

| | |
|------------------|-----|
| Number of pupils | 644 |
|------------------|-----|

| | |
|----------------------------|-----|
| (Average daily attendance) | 630 |
|----------------------------|-----|

| | |
|--|-------|
| Pupil cost (education expense per one pupil) | 7,904 |
|--|-------|

7

昭和24年度

学校教育経費調査報告書 (仮印刷)

目

- I. 序
- II. 本調査の特徴
- III. 調査実施要項
 - 1. 調査の目的
 - 2. 調査の範囲
 - 3. 調査の対象
 - 4. 調査の時期
 - 5. 調査の方法
 - 6. 調査の組織
 - 7. 調査の進行
 - 8. 説明会日程と会場
 - 9. 調査票の配布
 - 10. 調査票の収集
- IV. 昭和24年度学校教育経費の概況
- V. 教取費の給付手当の概況
- VI. 公費と公費以外の支出の概況
- VII. 支出項目別百分率
- VIII. 学校種別一校当り
- IX. 学校種別一人当り
- X. 学校規模と一人当り
- XI. 昭和24年度学校教育経費の概況
- XII. 各種附表
- XIII. 調査の反省

高

School Cost - Kochi

査報告書 (仮印刷)

目 次

- I. 序
- II. 本調査の特徴
- III. 調査実施等項
 - 1. 調査の目的 2. 調査主体 3. 調査客体 4. 調査の資料
 - 5. 調査の方法 6. 調査票 7. 記入上の注意
 - 8. 説明会日程と会期 9. 調査票作成対象数及び収集率
 - 10. 調査票の収集 11. 県教育委員会作業 12. 報告学校数と児童生徒数
- IV. 昭和24年度学校教育経費総額
- V. 教職員給与手当のしめし割合
- VI. ~~公費を公費以外~~の財源別割合
- VII. 支出項目別百分率
- VIII. 学校種別一校当り経費
- IX. 学校種別一人当り経費
- X. 学校規模と一人当り教育費との関係
- XI. ~~昭和24年~~年度学校教育経費の概要
- XII. 各種四表
- XIII. 調査の反省

高知県教育委員会調査課 (25.8.15日印刷)

REC'D C.E.
DATE 23 Aug '50

昭和24年度学校経費調査報告

序 昭和25年6月23日(リ)7月8日(ロ)に行つた第一回教育調査協議会において各校に依頼記入してもらつた昭和24年度学校経費調査についての集計分析結果の概要を以下に報告する。

本調査の特徴

要

従来の前資本主義形態の予算構成による支出項目をさげ学校における教育活動の面即ち学校の機能の面からの支出項目に別けた。なお、需要費については5ヶ年間以上使用できるもの臨時費に繰入れ、5ヶ年未満のものについては、その経費を使用予定年数で割つた経費を計上した。従つて一ヶ年の平均消費支出額に主眼をおいた。

なおこの調査の項目決定には四國民事部教育課ハイガー氏の助力によること大であった。ここに記し感謝の意を表す。

調査実施要項

1. 調査の目的

我々の子弟を教育する学校について教育行政当業者、教員は勿論各市町村住民も、自分たちの建てた学校ではどんな項目にどのくらいの経費が支出され、さらにはその経費のうち、いかに多くの部分を寄付の形で私的に負担しているかを明確に知らなければならぬ。このような絶対的な目的をもつて、この調査は計畫された。

更に具体的にかくと

特

1. 現在学校における使用されている
2. 公費と公費以
3. 児童生徒一人当
4. 一校当り一学
5. 教職員給与割合を以てい
6. 学校の児童生徒等々への向

2. 調査主体 高知縣教育委
3. 調査客体 高知縣内の小
4. 調査の資料 昭和24年度の
5. 調査の方法 悉階調査

縣下24会場にとも記入要領をとつた。

6. 調査票
7. 記入上の注意
8. 日程

育調
24年
以下

け
の
上
ては
延つて

1. 現在学校における経費はどの方面にどの程度の額が使用されているか
 2. 公費と公費以外の私費の割合はどうか
 3. 児童生徒一人当りの経費はどの程度の額か
 4. 一校当り一学級当りの経費はどうか
 5. 教職員給与・手当は全体に対してどの程度の割合を占めているか
 6. 学校の児童生徒数と経費の関係はどうか
- 等々以上の問いに答えるのが本調査の目的である。

2. 調査主体

高知縣教育委員会事務局 調査課

3. 調査客体

高知縣内の小・中・高等学校全部

4. 調査の資料

昭和24年度の決算書又は仮決算書にわたる。

5. 調査の方法

志願調査

県下24会場にて協議会をもつ他の三四の調査票とともに入力要領の説明を行い自計申告による志願調査をとった。

- 6 調査票
- 7 記入上の注意
- 8 日程

若
ては
その
目的に
あつた。

8. 説明会日程と会場

A 班

| 日 | 曜 | 会場名 | 参集範囲 |
|------|---|---------|----------|
| 5.23 | 火 | 野根中学校 | 安芸一区 |
| 24 | 水 | 室戸岬水産学校 | 〃 二区 |
| 26 | 金 | 田野小学校 | 〃 三区 |
| 27 | 土 | 安芸高校 | 〃 四・五区 |
| 29 | 月 | 野市中学校 | 香美一・二・三区 |
| 30 | 火 | 大柄中学校 | 〃 四・五区 |
| 6.1 | 木 | 大杉小学校 | 土長三区 |
| 3 | 土 | 田井中学校 | 〃 四区 |
| 5 | 月 | 長末小学校 | 〃 六区 |
| 8 | 木 | 伊野小学校 | 吾川一・二・三区 |
| 9 | 金 | 追手前高校 | 高知市土長五区 |
| 10 | 土 | 高知農業高校 | 土長一・二区 |

B 班

| 日 | 曜 | 会場名 | 参集範囲 |
|------|---|----------|---------|
| 5.22 | 月 | 窪川高校 | 高岡南部 |
| 23 | 火 | 川崎中学校 | 北播区 |
| 25 | 木 | 中村高校 | 中央区 |
| 26 | 金 | 宿毛高校 | 播西才一区 |
| 27 | 土 | 弘見小学校 | 〃 才二区 |
| 29 | 月 | 清水高校 | 高岡南部 |
| 31 | 水 | 白田川小学校 | 播東区 |
| 6.2 | 金 | 須崎高校 | 高岡中央区 |
| 5 | 月 | 東津野中央小学校 | 東津野区橋原区 |
| 8 | 木 | 大崎中学校 | 吾川四区 |
| 9 | 金 | 越知小学校 | 高岡北一・二区 |
| 10 | 土 | 高岡高校 | 高岡東部 |

9 調査票作成対象数及び収集率

| 学校段階別 | 学校数 | 報告学校数 | 収集率 | |
|-------|-----|-------|-----|------|
| 小学校 | 414 | 389 | 94% | |
| 中学校 | 195 | 175 | 90% | |
| 高等学校 | 全日制 | 23 | 23 | 100% |
| | 定時制 | 33 | 30 | 91% |
| 計 | 665 | 617 | 93% | |

10. 言

11. 県

(一)

日

(二)

(三)

12 報

| |
|------|
| 学 |
| 項 |
| 24年度 |
| 報告 |
| 報告学校 |

10. 調査票収集

報告学校より縣教育委員会調査課への
提出期限 6月20日

11. 縣教育委員会の作業

(一) 学校経費分析作業

A 学校段階別学校経費単純集計作業

- 1 作業期間 7月20日より7月30日
- 2 分擔作業表

| 学校段階別 | 所要延人員 |
|----------------|-------|
| 小学校 | 20 |
| 中学校 | 16 |
| 全日制 定時制} 高校 | 4 |
| 計 | 40 |

B 分析作業

- 1 期間 8月1日より8月10日
- 2 全所要延人員 50人

(二) 調査票整理作業 8月10日より8月14日

(三) 報告書原稿完成日 8月17日

12 報告学校数と児童生徒数

| 学校種別 項目 | 小学校 | | 中学校 | | 高等学校 | | 私立高校 (合併中) |
|------------|---------|-----|--------|-----|-------------|--------------|---------------|
| | 公立 | 組合立 | 公立 | 組合立 | 全日制 | 定時制 | |
| 24年度学校数 | 412 | 2 | 182 | 13 | 県立22 市立1 | 本校13 分校20 | 3 |
| 報告学校数 | 387 | 2 | 162 | 13 | 23 | 本校12 分校18 | 3 |
| 報告学校児童生徒数 | 101,028 | | 46,975 | | 9,629 | 1,750 | |

| |
|----|
| 率 |
| 4% |
| 0% |
| 0% |
| 1% |
| 3% |

昭和24年度学校教育経費總額

| 費目 | | 小 | 学 | 校 |
|-------------------------|---------------|----------------|---------------|----------------|
| | | 公 | そ | 計 |
| | | 費 | の | |
| | | | 他 | |
| 1 管理 運営 費 用 | a 校長給料 | 44,097,291.26 | 7,343.- | 44,104,634.26 |
| | b 校長旅費 | 1,862,181.43 | 117,397.- | 1,979,578.43 |
| | c 事務取員等給料 | 6,449,311.- | 194,039.- | 6,643,350.- |
| | d 同 旅費 | 17,045.- | 10,960.- | 28,005.- |
| | e 日直宿直料 | 7,892,838.30 | 6,044.- | 7,898,882.30 |
| | f 事務用需要費 | 5,786,445.75 | 947,026.26 | 6,733,472.01 |
| | 小計 | 66,105,112.74 | 1,282,809.26 | 67,387,922.00 |
| 2 教 育 費 用 | a 教員給料 | 19,993,465.21 | 310,305.- | 20,303,770.21 |
| | b 教員旅費 | 4,348,860.87 | 1,212,745.50 | 5,561,606.37 |
| | c 教授用需要費 | 14,766,546.75 | 4,315,547.51 | 19,082,094.26 |
| | d 児童生徒の種別関係経費 | 1,638,911.09 | 3,196,864.51 | 4,835,775.60 |
| | 小計 | 220,688,974.08 | 9,035,462.52 | 229,724,436.60 |
| 3 運 用 費 用 | a 燃料費 | 1,732,899.40 | 315,528.50 | 2,048,427.90 |
| | b 治熱水費 | 925,020.70 | 71,948.- | 996,968.70 |
| | c 通信運搬費 | 1,262,908.50 | 53,409.96 | 1,316,318.46 |
| | d その他 | 1,016,318.83 | 585,037.50 | 1,601,356.33 |
| | 小計 | 4,937,147.43 | 1,025,923.96 | 5,963,071.39 |
| 4 維 持 費 用 | a 修繕費 | 11,503,172.83 | 1,425,083.- | 12,928,255.83 |
| | b その他 | 1,070,095.15 | 247,957.50 | 1,318,052.65 |
| | 小計 | 12,573,267.98 | 1,673,040.50 | 14,246,308.48 |
| (4~4) 合計 | | 304,304,482.23 | 13,017,236.24 | 317,321,718.47 |
| 5 | 臨時費 | 7,498,116.20 | 7,404,980.- | 85,903,094.67 |

| 校 | | 中 | | 校 | |
|---------------|----------------|----------------|--------------|----------------|---|
| その他 | 計 | 公費 | その他 | 計 | 計 |
| 7,343.- | 44,104,634.26 | 25,665,057.52 | 24,700.00 | 25,667,457.52 | |
| 117,397.- | 1,979,578.43 | 1,085,636.20 | 97,235.00 | 1,182,871.20 | |
| 194,039.- | 6,643,350.- | 2,934,394.00 | 161,596.00 | 3,095,990.- | |
| 10,960.- | 28,005.- | 20,415.00 | 7,450.00 | 27,865.- | |
| 6,044.- | 7,898,882.30 | 5,338,688.80 | 17,311.00 | 5,355,999.80 | |
| 947,026.26 | 6,733,472.01 | 3,644,049.50 | 438,794.90 | 4,082,844.40 | |
| 1,282,809.26 | 6,738,792.21 | 3,868,824.02 | 724,786.90 | 39,413,027.92 | |
| 310,305.- | 200,244,960.21 | 148,019,422.25 | 44,776.- | 148,064,198.25 | |
| 1,212,745.50 | 5,561,606.33 | 2,764,774.70 | 750,034.- | 3,514,808.70 | |
| 4,315,547.51 | 19,082,093.86 | 11,921,532.13 | 3,097,025.50 | 15,018,557.63 | |
| 3,196,864.51 | 4,835,776.20 | 1,054,78.- | 2,976,623.50 | 4,031,331.50 | |
| 9,035,462.52 | 229,724,436.60 | 163,760,437.08 | 68,68,459.00 | 170,628,896.08 | |
| 313,528.50 | 2,048,427.90 | 955,911.- | 144,031.90 | 1,099,942.90 | |
| 71,948.- | 996,968.70 | 410,797.- | 10,841.00 | 421,638.- | |
| 53,409.96 | 1,316,318.46 | 777,740.- | 191,363.00 | 969,103.- | |
| 58,503.750 | 1,601,356.33 | 511,06.- | 304,920.10 | 816,026.10 | |
| 1,025,923.96 | 5,963,071.39 | 2,655,554.- | 651,156.00 | 3,306,710.- | |
| 1,425,083.- | 12,928,255.83 | 3,253,212.80 | 512,499.- | 3,765,711.80 | |
| 247,957.50 | 1,318,032.65 | 649,89.- | 462,283.90 | 1,111,472.90 | |
| 1,673,040.50 | 14,246,288.48 | 3,902,401.80 | 974,782.90 | 4,877,184.70 | |
| 130,172,36.24 | 317,321,718.47 | 209,006,633.90 | 9,219,184.80 | 218,225,818.70 | |
| 740,4980.- | 85,903,096.20 | 66,508,071.60 | 2,129,389.17 | 68,637,560.77 | |

昭和24年度 学校教育経費総計

| 学校種別 財源区分 支出項目 | | 公立高等学校(全日制)(学校数23) | | | 公立高等 |
|----------------------|------------------|--------------------|---------------|---------------|----------------|
| | | 公 費 (県・市町村) | その他 (PTA等) | 計 | 公 費 (県・市町村) |
| 1. 管理に属する費用 | a. 校長給料 | 3,517,328.00 | 34,980.00 | 3,552,308.00 | 23,040 |
| | b. 校長旅費 | 731,503.30 | 24,590.00 | 756,093.30 | 110,100 |
| | c. 事務職員等給料 | 1,406,410.00 | 213,170.00 | 1,619,580.00 | 1,751,681 |
| | d. 同 旅費 | 299,554.00 | 55,630.00 | 355,184.00 | 63,866 |
| | e. 日直宿直料 | 1,746,635.00 | — | 1,746,635.00 | 83,142 |
| | f. 事務用需要費 | 1,349,329.00 | 326,679.04 | 1,676,008.04 | 415,167 |
| | 小 計 | 9,050,759.30 | 655,049.04 | 9,705,808.34 | 2,446,997 |
| 2. 教授に属する費用 | a. 教員給料 | 59,715,194.26 | 852,190.00 | 60,567,384.26 | 13,300,368 |
| | b. 教員旅費 | 1,709,484.28 | 387,972.90 | 2,097,457.18 | 1,113,331 |
| | c. 教授用需用費 | 3,409,792.66 | 2,659,211.70 | 6,069,004.36 | 1,412,638 |
| | d. 児童生徒の活動に属する経費 | 401,372.30 | 2,459,735.36 | 2,861,107.66 | 89,812 |
| | 小 計 | 65,235,843.50 | 6,358,709.96 | 71,594,553.46 | 15,916,149 |
| 3. 運用費 | a. 燃料費 | 318,317.70 | 173,136.10 | 491,453.80 | 156,500 |
| | b. 光熱水費 | 631,952.50 | 36,243.00 | 668,195.50 | 60,534 |
| | c. 通信運搬費 | 581,477.33 | 138,816.00 | 720,293.33 | 65,079 |
| | d. その他 | 662,658.00 | 751,837.50 | 1,414,495.50 | 68,232 |
| | 小 計 | 2,194,405.53 | 1,100,032.60 | 3,294,438.13 | 350,346 |
| 4. 維持費 | a. 修繕費 | 2,345,049.75 | 724,652.00 | 3,069,701.75 | 158,890 |
| | b. その他 | 173,424.00 | 166,068.00 | 339,492.00 | 18,820 |
| | 小 計 | 2,518,473.75 | 890,720.00 | 3,409,193.75 | 177,710 |
| (1-4) 合 計 | | 78,999,482.08 | 9,004,511.60 | 88,003,993.68 | 18,891,202 |
| 5. | 臨時費 | 19,648,821.00 | 892,200.00 | 20,541,021.00 | 854,797 |

| 全日制) (学校数 23) | | 公立高等学校 (定時制) [学校数 [茶]] | | | 私立高等学校 |
|---------------|---------------|-------------------------|-----------------|---------------|------------------|
| 他 等) | 計 | 公 費 (県市町村) | その他 (P.T.A等) | 計 | [学校数 3] 併中を含む |
| 980.00 | 3,552,308.00 | 23,040.00 | — | 23,040.00 | 449,097.00 |
| 590.00 | 756,093.30 | 110,100.10 | — | 110,100.10 | 57,367.00 |
| 1,170.00 | 1,619,580.00 | 1,751,681.60 | 103,400.00 | 1,855,081.60 | 1,325,269.00 |
| 5,630.00 | 355,184.00 | 63,866.50 | 4,265.00 | 68,131.50 | 10,000.00 |
| — | 1,746,635.00 | 83,142.00 | — | 83,142.00 | 72,091.00 |
| 6,679.04 | 1,676,008.04 | 415,167.00 | 10,095.00 | 425,262.00 | 144,544.00 |
| 5,091.04 | 9,705,808.34 | 2,446,997.20 | 117,760.00 | 2,564,757.20 | 2,058,368.00 |
| 2,190.00 | 60,567,384.26 | 13,300,368.00 | 67,150.00 | 13,367,518.00 | 8,982,264.00 |
| 7,972.70 | 2,097,057.18 | 1,113,331.40 | 63,027.00 | 1,176,358.40 | 70,110.00 |
| 1,211.70 | 6,069,004.36 | 1,412,638.00 | 120,676.00 | 1,533,314.00 | 1,111,184.00 |
| 1,735.36 | 2,861,107.66 | 898,812.00 | 118,802.00 | 2,08,614.00 | 484,700.00 |
| 5,709.96 | 71,594,553.46 | 15,916,149.40 | 369,655.00 | 16,285,804.40 | 10,648,258.00 |
| 1,136.10 | 491,453.80 | 156,500.50 | 7,565.00 | 164,065.50 | 81,079.00 |
| 1,243.00 | 668,195.50 | 60,534.00 | 7,561.00 | 68,095.00 | 124,303.00 |
| 1,816.00 | 720,293.33 | 65,079.00 | 10,859.00 | 75,938.00 | 24,230.00 |
| 1,837.50 | 1,414,495.50 | 68,232.75 | 3,600.00 | 71,832.75 | 92,350.00 |
| 1,032.60 | 3,294,438.13 | 350,346.25 | 29,585.00 | 379,931.25 | 321,962.00 |
| 1,652.00 | 3,069,701.75 | 158,890.00 | 12,518.00 | 171,408.00 | 367,724.00 |
| 1,068.00 | 339,492.00 | 18,820.00 | 1,748.00 | 20,568.00 | 275,833.00 |
| 1,720.00 | 3,407,193.75 | 177,710.00 | 14,266.00 | 191,976.00 | 643,557.00 |
| 511.60 | 88,003,993.68 | 18,891,202.86 | 531,266.00 | 19,422,468.86 | 13,672,145.00 |
| 1,200.00 | 20,541,021.00 | 854,799.00 | 10,075.00 | 864,874.00 | 622,187.00 |

教職員の給与手當のしる割合

| 学校 項目 | 小学校 | | | 中 |
|------------|-----------------------|---------------------|-----------------------|----------------------|
| | 公立 | 組合立 | 合計 | 公立 |
| 教職員の給与手當 | 81.6% | 66.0% | 83.5% | 83.7% |
| (1)~(4)の合計 | 316,155,047 (100%) | 1,166,671 (100%) | 317,321,718 (100%) | 193,084,26 (100%) |

教職員の給与手當 = (1. a. 校長給料) + (1. c. 事務職員等給料)

臨時費

| 学校別 | 出所別 | | 公費 |
|------|-----|-----|-------|
| | 公立 | 組合立 | |
| 小学校 | 公立 | | 91.4% |
| | 組合立 | | 39.0% |
| | 合計 | | 91.4% |
| 中学校 | 公立 | | 96.5% |
| | 組合立 | | 98.0% |
| | 合計 | | 96.9% |
| 高等学校 | 全日制 | | 95.6% |
| | 定時制 | | 98.8% |

割合

| 学校 | | 中学校 | | | 高等学校 | |
|------------------|-----------------------|-----------------------|----------------------|-----------------------|----------------------|----------------------|
| 合立 | 合計 | 公立 | 組合立 | 合計 | 全日制 | 定時制 |
| 6.0% | 93.5% | 83.7% | 81.8% | 93.5% | 76.6% | 78.9% |
| 66,671 (100%) | 317,321,718 (100%) | 193,084,268 (100%) | 25,141,551 (100%) | 218,225,819 (100%) | 88,003,994 (100%) | 19,422,469 (100%) |

(校長給料) + (1.c.事務職員等給料) + (1.e.日直宿直料) + (2.a.教員給料)

品時費

| 所別 | 公費 | 私費 | 計 |
|-----|-------|-------|-------------------|
| 公立 | 91.4% | 8.6% | 85,886,976 (100%) |
| 組合立 | 39.0% | 62.0% | 16,120 (100%) |
| 總計 | 91.4% | 8.6% | 85,903,096 (100%) |
| 公立 | 96.5% | 3.5% | 56,022,898 (100%) |
| 組合立 | 98.0% | 2.0% | 7,614,563 (100%) |
| 總計 | 96.9% | 3.1% | 68,637,560 (100%) |
| 全日制 | 95.6% | 4.4% | 20,541,021 (100%) |
| 定時制 | 98.8% | 1.2% | 864,872 (100%) |

公費と私費の百分率 (1) (1) — (4)の合計

| 学校別 | 出所別 | 公 費 | | 私 |
|------|-----|-------|---|-----|
| | | 公 | 費 | |
| 小学校 | 公立 | 95.9% | | 4. |
| | 組合立 | 97.5% | | 2. |
| | 總計 | 95.9% | | 4. |
| 中学校 | 公立 | 95.6% | | 4. |
| | 組合立 | 97.0% | | 3. |
| | 總計 | 95.8% | | 4. |
| 高等学校 | 全日制 | 93.8% | | 10. |
| | 定時制 | 97.2% | | 2. |

支出項目別百分率

| 支出項目 | 小学校 | | | 中 |
|--------------|-------------|-----------|-------------|-------------|
| | 市町村立 | 組合立 | 總計 | 市町村立 |
| (1) 管理に關する費用 | 21.2% | 26.7% | 21.2% | 18.6% |
| (2) 教授に關する費用 | 72.5% | 55.1% | 72.4% | 77.6% |
| (3) 運用費 | 1.9% | 3.6% | 1.9% | 1.5% |
| (4) 維持費 | 4.4% | 14.6% | 4.5% | 2.3% |
| 合 計 | 100% | 100% | 100% | 100% |
| | 316,155,047 | 1,166,671 | 317,321,718 | 193,084,268 |

(1) — (4)の合計)

| 費 | 私 | 費 | 計 |
|------|-------|---|--------------------|
| 5.9% | 4.1% | | 316,155,047 (100%) |
| 7.5% | 2.5% | | 1,166,671 (100%) |
| 5.9% | 4.1% | | 317,321,718 (100%) |
| 5.6% | 4.4% | | 193,084,268 (100%) |
| 7.0% | 3.0% | | 25,141,550 (100%) |
| 5.8% | 4.2% | | 218,225,818 (100%) |
| 3.8% | 10.2% | | 88,003,994 (100%) |
| 7.2% | 2.8% | | 19,422,469 (100%) |

| 学 校 | | 中 学 校 | | | 高 等 学 校 | |
|-----------|-------------|-------------|------------|-------------|------------|------------|
| 組合立 | 總 計 | 市町村立 | 組合立 | 總 計 | 全 日 制 | 定 時 制 |
| 26.7% | 21.2% | 18.6% | 13.5% | 18.2% | 11.0% | 13.4% |
| 55.1% | 72.4% | 77.6% | 83.2% | 78.1% | 81.4% | 83.8% |
| 3.6% | 1.9% | 1.5% | 1.5% | 1.5% | 3.7% | 1.9% |
| 14.6% | 4.5% | 2.3% | 1.9% | 2.2% | 3.9% | 0.9% |
| 100% | 100% | 100% | 100% | 100% | 100% | 100% |
| 1,166,671 | 317,321,718 | 193,084,268 | 25,141,550 | 218,225,818 | 88,003,993 | 19,422,468 |

一校當リ經費 (單位, 円)

| 支出項目 | 學校種別 設立者別 財源別 | 小 学 校 | | | 中 学 | |
|--------------|---------------------|----------------------|----------------------|----------------------|----------------------|----------------------|
| | | 公 立 | 組 合 立 | 總 計 | 公 立 | 組 合 立 |
| (1) 管理に關する費用 | 公費 | 170,003 ^円 | 155,955 ^円 | 169,936 ^円 | 217,879 ^円 | 260,658 ^円 |
| | 私費 | 3,320 | — | 3,320 | 4,264 | 2,611 |
| | 計 | 173,323 | 155,955 | 173,234 | 222,163 | 263,269 |
| (2) 校授に關する費用 | 公費 | 568,662 | 308,297 | 567,323 | 886,448 | 1,550,448 |
| | 私費 | 23,280 | 12,952 | 23,227 | 38,046 | 54,225 |
| | 計 | 591,943 | 321,249 | 590,554 | 924,495 | 1,604,674 |
| (3) 運用費用 | 公費 | 12,660 | 18,782 | 12,672 | 14,061 | 29,050 |
| | 私費 | 2,640 | 1,900 | 2,637 | 4,013 | 76 |
| | 計 | 15,300 | 20,682 | 15,329 | 18,074 | 29,126 |
| (4) 維持費 | 公費 | 32,047 | 85,447 | 32,322 | 21,252 | 35,356 |
| | 私費 | 4,323 | — | 4,323 | 5,893 | 1,538 |
| | 計 | 36,370 | 85,447 | 36,623 | 27,145 | 36,894 |
| 合 計 | 公費 | 783,378 | 568,483 | 782,274 | 1,139,660 | 1,875,513 |
| | 私費 | 33,559 | 14,852 | 33,463 | 52,218 | 58,452 |
| | 計 | 816,938 | 583,335 | 815,737 | 1,191,878 | 1,933,965 |

- 註. 1. 計が合おないのは總額(累計)の円未満を切り捨てる各々を報告を四捨五入したる (一人當り經費に同じ)
2. 定時制高等學校は分校を一校と見做すが、本校のなりけり場合()を以て何にするかの問題があり、一校當り經費は算出しなかつた

| 計 | 中 学 校 | | | 高等学校 (全日制) |
|------------------|----------------------|----------------------|----------------------|----------------------|
| | 公 立 | 組 合 立 | 總 計 | |
| 936 ^四 | 217.879 ^四 | 260.658 ^四 | 221.076 ^四 | 393.511 ^四 |
| 320 | 4.264 | 2.611 | 4.1 ^二 | 28.480 |
| 234 | 222.163 | 263.269 | 225.217 | 421.991 |
| 323 | 886.448 | 1,550.448 | 935.974 | 2,836,341 |
| 227 | 38.046 | 54.225 | 39.248 | 276.465 |
| 554 | 924.495 | 1,604.674 | 975.022 | 3,112,806 |
| 672 | 14,061 | 29,050 | 15,175 | 95,488 |
| 637 | 4,013 | 76 | 3,721 | 47,824 |
| 329 | 18,074 | 29,126 | 18,895 | 143,236 |
| 322 | 21,252 | 35,356 | 22,29 ⁹ | 109,498 |
| 323 | 5,893 | 1,538 | 5,570 | 38,726 |
| 623 | 27,145 | 36,894 | 27,870 | 148,225 |
| 274 | 1,139,660 | 1,875,513 | 1,194,324 | 3,434,760 |
| 463 | 52,218 | 58,452 | 52,681 | 391,500 |
| 737 | 1,191,878 | 1,933,965 | 1,247,005 | 3,826,260 |

計)の内未滿を切り捨てる各々を報告学校数で割り内未滿
 當り經費に同じ))
 校と見做すが、本校のなり場合(高知果には多)の取り扱
 り、一校當り經費は算出できなかった

一人当り経費

| 費目 | 小学校 | | | 中学校 | | |
|---------------|-------|-----|-------|-------|-----|-------|
| | 公費 | その他 | 計 | 公費 | その他 | 計 |
| 1 管理に要する費用 | | | | | | |
| a 校長給料 | 436 | 0 | 437 | 546 | 0 | 546 |
| b 校長旅費 | 18 | 1 | 20 | 23 | 2 | 25 |
| c 事務職員等給料 | 64 | 2 | 66 | 62 | 2 | 65 |
| d 同 旅費 | 0 | 1 | 1 | 0 | 0 | 0 |
| e 日直宿直料 | 78 | 0 | 78 | 114 | 0 | 114 |
| f 事務用需要費 | 57 | 9 | 67 | 78 | 9 | 87 |
| 小計 | 654 | 13 | 667 | 824 | 15 | 839 |
| 2 教壇費用 | | | | | | |
| a 教員給料 | 1,979 | 3 | 1,982 | 3,151 | 0 | 3,152 |
| b 教員旅費 | 43 | 12 | 55 | 59 | 16 | 75 |
| c 教授用需要費 | 146 | 43 | 189 | 254 | 66 | 320 |
| d 児童生徒の活動開始経費 | 16 | 32 | 48 | 22 | 63 | 85 |
| 小計 | 2,184 | 90 | 2,274 | 3,486 | 146 | 3,632 |
| 3 運用費 | | | | | | |
| a 燃料費 | 17 | 3 | 20 | 20 | 3 | 23 |
| b 光熱水費 | 9 | 0 | 10 | 9 | 0 | 9 |
| c 通信運搬費 | 13 | 0 | 13 | 17 | 4 | 21 |
| d その他 | 10 | 6 | 16 | 11 | 6 | 17 |
| 小計 | 49 | 10 | 59 | 57 | 14 | 71 |
| 4 維持費 | | | | | | |
| a 修繕費 | 114 | 14 | 128 | 69 | 11 | 80 |
| b その他 | 11 | 3 | 13 | 14 | 10 | 24 |
| 小計 | 124 | 17 | 141 | 83 | 21 | 104 |
| (1~4)合計 | 3,012 | 129 | 3,141 | 4,449 | 196 | 4,645 |
| 5 臨時費 | 777 | 73 | 850 | 1,416 | 45 | 1,461 |



| | 中 学 校 | | | 高等学校(全日制) | | | 高等学校(定時制) | | |
|---|-------|-----|-------|-----------|-----|-------|-----------|-----|--------|
| | 公 費 | その他 | 計 | 公 費 | その他 | 計 | 公 費 | その他 | 計 |
| 7 | 546 | 0 | 546 | 365 | 4 | 369 | 13 | — | 13 |
| 0 | 23 | 2 | 25 | 76 | 3 | 79 | 63 | — | 63 |
| 6 | 62 | 2 | 65 | 146 | 22 | 168 | 1,001 | 59 | 1,059 |
| 1 | 0 | 0 | 0 | 31 | 6 | 37 | 37 | 2 | 39 |
| 8 | 114 | 0 | 114 | 181 | — | 181 | 47 | — | 47 |
| 7 | 78 | 9 | 87 | 140 | 34 | 174 | 237 | 6 | 243 |
| 7 | 824 | 15 | 839 | 940 | 68 | 1,008 | 1,397 | 67 | 1,464 |
| 2 | 3,151 | 0 | 3,152 | 6,202 | 89 | 6,289 | 7,595 | 38 | 7,633 |
| 5 | 59 | 16 | 75 | 178 | 40 | 218 | 636 | 36 | 672 |
| 9 | 254 | 66 | 320 | 354 | 276 | 630 | 806 | 70 | 875 |
| 8 | 22 | 63 | 86 | 42 | 255 | 297 | 52 | 68 | 120 |
| 4 | 3,486 | 146 | 3,632 | 6,775 | 660 | 7,434 | 9,088 | 212 | 9,299 |
| 0 | 20 | 3 | 23 | 33 | 18 | 51 | 90 | 5 | 93 |
| 0 | 9 | 0 | 9 | 66 | 4 | 69 | 35 | 5 | 40 |
| 3 | 17 | 4 | 21 | 60 | 14 | 75 | 37 | 6 | 44 |
| 6 | 11 | 6 | 17 | 69 | 78 | 147 | 40 | 2 | 41 |
| 9 | 57 | 14 | 70 | 228 | 114 | 342 | 200 | 17 | 218 |
| 8 | 69 | 11 | 80 | 244 | 75 | 319 | 91 | 7 | 98 |
| 3 | 14 | 10 | 24 | 18 | 17 | 35 | 10 | 0 | 10 |
| 1 | 83 | 21 | 104 | 262 | 92 | 354 | 101 | 8 | 109 |
| 1 | 4,449 | 196 | 4,646 | 8,204 | 935 | 9,137 | 10,787 | 304 | 11,091 |
| 0 | 1,416 | 45 | 1,461 | 2,041 | 93 | 2,133 | 488 | 6 | 493 |

小學校

| 金額 | 人數 | | | | | | | | | | | |
|--------|------|------|------|------|------|------|------|------|------|------|-------|-------|
| | 0 | 100 | 200 | 300 | 400 | 500 | 600 | 700 | 800 | 900 | 1,000 | 1,100 |
| 0 | 8 | 7 | 4 | — | 1 | 1 | 2 | 1 | 1 | — | — | — |
| 1,000 | 3 | 3 | 1 | 2 | — | 2 | — | 4 | — | — | — | — |
| 2,000 | 7 | 15 | 19 | 2 | 9 | 4 | 6 | 1 | 2 | 3 | 2 | 2 |
| 3,000 | 20 | 29 | 33 | 16 | 8 | 1 | 1 | — | 1 | 1 | — | — |
| 4,000 | 28 | 22 | 11 | 5 | 3 | 1 | — | — | — | — | — | — |
| 5,000 | 29 | 10 | 2 | 1 | — | — | — | — | — | — | — | — |
| 6,000 | 8 | 9 | — | — | — | — | — | — | — | — | — | — |
| 7,000 | 3 | 3 | — | — | — | — | — | — | — | — | — | — |
| 8,000 | 1 | — | — | — | — | — | — | — | — | — | — | — |
| 9,000 | 1 | — | — | — | — | — | — | — | — | — | — | — |
| 10,000 | — | — | — | — | — | — | — | — | — | — | — | — |
| 11,000 | — | — | — | — | — | — | — | — | — | — | — | — |
| 12,000 | — | — | — | — | — | — | — | — | — | — | — | — |
| 12,000 | — | — | — | — | — | — | — | — | — | — | — | — |
| 13,000 | — | — | — | — | — | — | — | — | — | — | — | — |
| 14,000 | — | — | — | — | — | — | — | — | — | — | — | — |
| 14,000 | 2 | — | — | — | — | — | — | — | — | — | — | — |
| 合計 | 110 | 98 | 70 | 26 | 21 | 9 | 9 | 6 | 4 | 4 | 2 | 2 |
| 平均 | 4573 | 3898 | 3242 | 3538 | 3072 | 2166 | 2389 | 1500 | 2250 | 2750 | 2500 | 2500 |

| 600 700 | 700 800 | 800 900 | 900 1,000 | 1,000 1,100 | 1,100 1,200 | 1,200 1,300 | 1,300 1,400 | 1,400 1,500 | 1,500 1,600 | 合計 |
|------------|------------|------------|--------------|----------------|----------------|----------------|----------------|----------------|----------------|-----|
| 2 | 1 | 1 | — | — | — | — | — | — | — | 25 |
| — | 4 | — | — | — | — | — | — | — | — | 15 |
| 6 | 1 | 2 | 3 | 2 | — | 3 | 1 | 3 | 1 | 78 |
| 1 | — | 1 | 1 | — | — | — | — | — | — | 110 |
| — | — | — | — | — | — | — | — | — | — | 70 |
| — | — | — | — | — | — | — | — | — | — | 42 |
| — | — | — | — | — | — | — | — | — | — | 17 |
| — | — | — | — | — | — | — | — | — | — | 6 |
| — | — | — | — | — | — | — | — | — | — | 1 |
| — | — | — | — | — | — | — | — | — | — | 1 |
| — | — | — | — | — | — | — | — | — | — | 0 |
| — | — | — | — | — | — | — | — | — | — | 0 |
| — | — | — | — | — | — | — | — | — | — | 0 |
| — | — | — | — | — | — | — | — | — | — | 0 |
| — | — | — | — | — | — | — | — | — | — | 2 |
| 9 | 6 | 4 | 4 | 2 | 0 | 3 | 1 | 3 | 1 | 367 |
| 2389 | 1500 | 2250 | 2750 | 2500 | 0 | 2500 | 2500 | 2500 | 2500 | |

中學校 (公立.組合立)

| 経費(円) | 0~100 | 100~200 | 200~300 | 300~400 | 400~500 | 500~600 |
|-------------|-------|---------|---------|---------|---------|---------|
| 0~1000 | 1 | 3 | 2 | 1 | | |
| 1000~2000 | 2 | 1 | | 1 | | |
| 2000~3000 | | 1 | | | | |
| 3000~4000 | | 3 | 10 | 4 | 5 | |
| 4000~5000 | 2 | 13 | 8 | 9 | 5 | |
| 5000~6000 | 7 | 25 | 6 | | 1 | |
| 6000~7000 | 10 | 11 | 5 | 2 | | |
| 7000~8000 | 7 | 4 | 2 | 1 | | |
| 8000~9000 | 5 | 2 | | | | |
| 9000~10000 | 7 | | | 1 | | |
| 10000~11000 | 3 | | | | | |
| 11000~12000 | 1 | | | | | |
| 12000以上 | 2 | | | | | |
| 合計 | 47 | 63 | 33 | 19 | 11 | |
| 平均 | 7350 | 5346 | 4621 | 4553 | 4136 | 0 |

組合立)

| 100~ 200 | 200 ~300 | 300~ 400 | 400~ 500 | 500~ 600 | 600~ 700 | 700~ 800 | 800 以上 | 合計 |
|-------------|-------------|-------------|-------------|-------------|-------------|-------------|-----------|-----|
| 3 | 2 | 1 | | | 1 | | | 8 |
| 1 | | 1 | | | | | | 4 |
| 1 | | | | | | | | 1 |
| 3 | 10 | 4 | 5 | | 2 | 1 | 1 | 26 |
| 13 | 8 | 9 | 5 | | 2 | 1 | 2 | 42 |
| 25 | 6 | | 1 | | | | | 39 |
| 11 | 5 | 2 | | | | | | 28 |
| 4 | 2 | 1 | | | | | | 14 |
| 2 | | | | | | | | 7 |
| | | 1 | | | | | | 8 |
| | | | | | | | | 3 |
| | | | | | | | | 1 |
| | | | | | 1 | | | 3 |
| 63 | 33 | 19 | 11 | | 6 | 2 | 3 | 184 |
| 346 | 4621 | 4553 | 4136 | 0 | 4835 | 3556 | 4116 | |

高等學校(全日制)

| 生徒一日平均 出席者 一人当り 概算 | 100人未満 | 100人以上 200人未満 | 200人" 300" | 300" 400" | 400" 500" | 500" 600" | 600" 700" | 700" |
|-----------------------------|--------|------------------|---------------|--------------|--------------|--------------|--------------|------|
| 3,000未満 | | | | | 1 | | | |
| 3,000-以上 6,000未満 | | | | | | | | |
| 6,000-以上 9,000未満 | | | | 1 | | | 1 | |
| 9,000-" 12,000-" | | 1 | 2 | | 1 | 1 | | |
| 12,000-" 15,000-" | 1 | 1 | 1 | | | | | |
| 15,000-" 18,000-" | | 2 | | | | | | |
| 18,000-" 21,000-" | | | | | | | | |
| 21,000-" 24,000 | | | | | | | | |
| 24,000-" 27,000" | | | | | | | | |
| 27,000-" 30,000" | | | | | | | | |
| 30,000-" 33,000" | 1 | | | | | | | |
| 33,000-" 36,000" | | | | | | | | |
| 36,000以上 | 1 | | | | | | | |
| 計 | 3 | 4 | 3 | 1 | 2 | 1 | 1 | |
| 平均 | 27480 | 14250 | 11500 | 7500 | 5000 | 10500 | 7500 | 9 |

| 400 " 500 " | 500 " 600 " | 600 " 700 " | 700 " 800 " | 800 " 900 " | 900 " 1,000 " | 1,000 " 1,100 " | 計 |
|----------------|----------------|----------------|----------------|----------------|------------------|--------------------|----|
| / | | | | | | | 1 |
| | | | | | | / | 1 |
| | | / | / | / | | / | 5 |
| / | / | | / | | / | | 7 |
| | | | | | | | 3 |
| | | | | | | | 2 |
| | | | | | | | 0 |
| | | | | | | | 0 |
| | | | | | | | 0 |
| | | | | | | | 0 |
| | | | | | | | 1 |
| | | | | | | | 0 |
| | | | | | | | 1 |
| 2 | 1 | 1 | 2 | 1 | 1 | 2 | 21 |
| 5000 | 10500 | 7500 | 9000 | 7500 | 10500 | 6000 | |

定時制

| 全席者数 程費 (円) | 0 ~ 50人 | 50 ~ 100 | 100 ~ 150 | 150 ~ 200 | 200 ~ 250 | 250 ~ 300 | 合計 |
|-----------------|---------|----------|-----------|-----------|-----------|-----------|----|
| 3,000 円未満 | | | | | | | 0 |
| 3,000 ~ 6,000 | 1 | 1 | | | | 1 | 3 |
| 6,000 ~ 9,000 | 1 | 1 | 1 | | | | 3 |
| 9,000 ~ 12,000 | 1 | | | | | | 1 |
| 12,000 ~ 15,000 | 1 | | 2 | | | | 3 |
| 15,000 ~ 18,000 | 1 | 1 | | | | | 2 |
| 18,000 ~ 21,000 | 1 | 2 | | | | | 3 |
| 42,000 ~ 45,000 | | 1 | | | | | 1 |
| 63,000 ~ 66,000 | 1 | | | | | | 1 |
| 合計 | 7 | 6 | 3 | 0 | 0 | 1 | 17 |

昭和24年度 学校教育経費の概説要

① 一人当り経費

| | 公費 | その他 | 計 |
|------------------------------|--------|-----|--------|
| 小学校 { (1) (2) 合計(経常費) 臨時費 | 3,012 | 129 | 3,141 |
| | 777 | 73 | 850 |
| 中学校 { 経常費 臨時費 | 4,449 | 196 | 4,646 |
| | 1,416 | 45 | 1,411 |
| 全日制 高校 { 経常費 臨時費 | 8,204 | 935 | 9,137 |
| | 2,041 | 93 | 2,133 |
| 定時制 高校 { 経常費 臨時費 | 10,784 | 304 | 11,091 |
| | 488 | 6 | 493 |

② 一校当り経費(経常費)

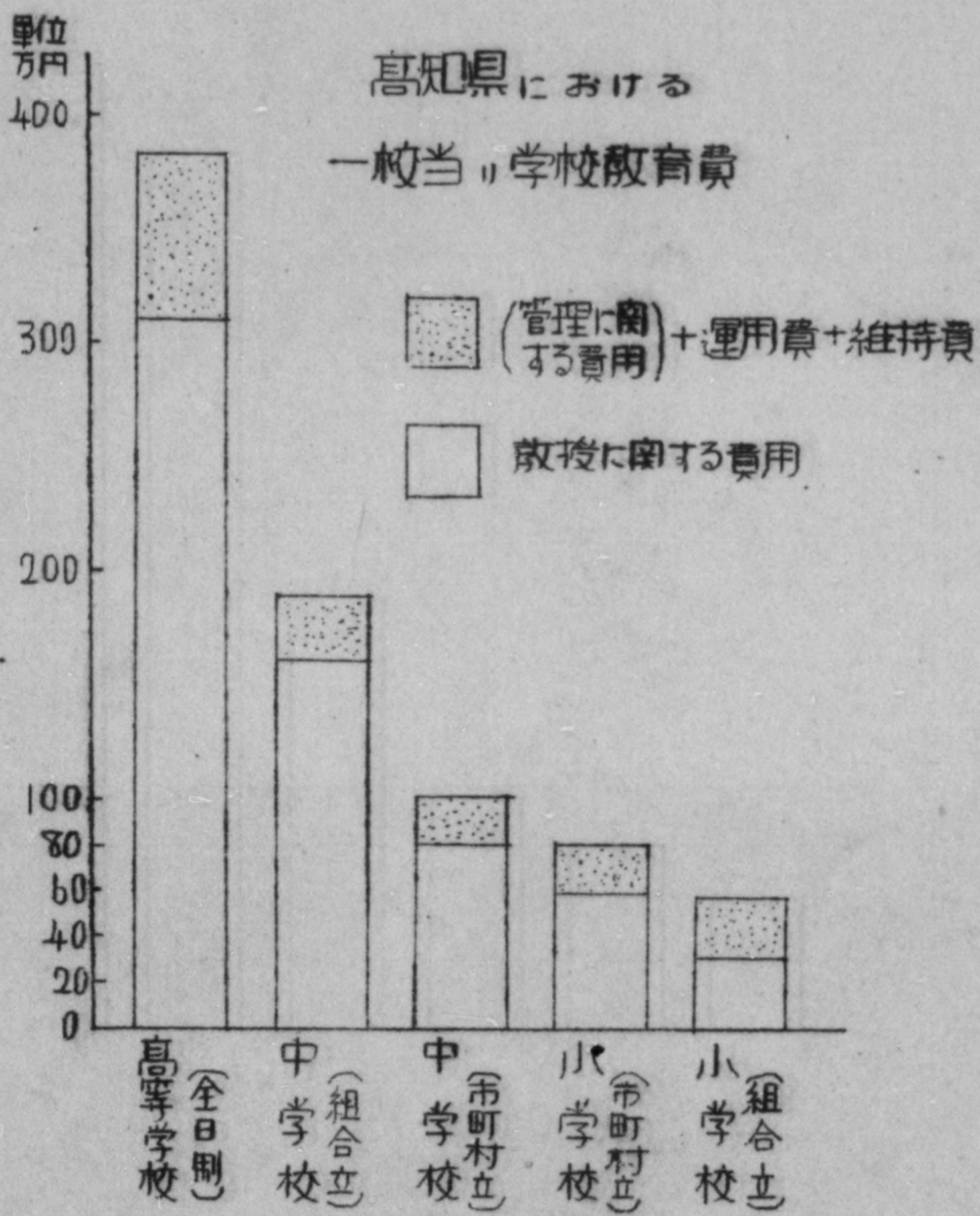
| | 公費 | その他 | 計 |
|---------|-----------|---------|-----------|
| 小学校 | 782,274 | 33,463 | 815,737 |
| 中学校 | 1,194,324 | 52,681 | 1,247,005 |
| 高校(全日制) | 3,434,760 | 391,500 | 3,826,260 |

支出
③ 項目別百分率

| | 小学校 | 中学校 | 全日制高校 | 定時制高校 |
|--------------|-------|-------|-------|-------|
| (1) 管理に関する費用 | 21.2% | 18.2% | 11.0% | 13.4% |
| (2) 教授に関する費用 | 72.4% | 78.1% | 81.4% | 83.8% |
| (3) 運用費 | 1.9% | 1.5% | 3.7% | 1.9% |
| (4) 維持費 | 4.5% | 2.2% | 3.9% | 0.9% |

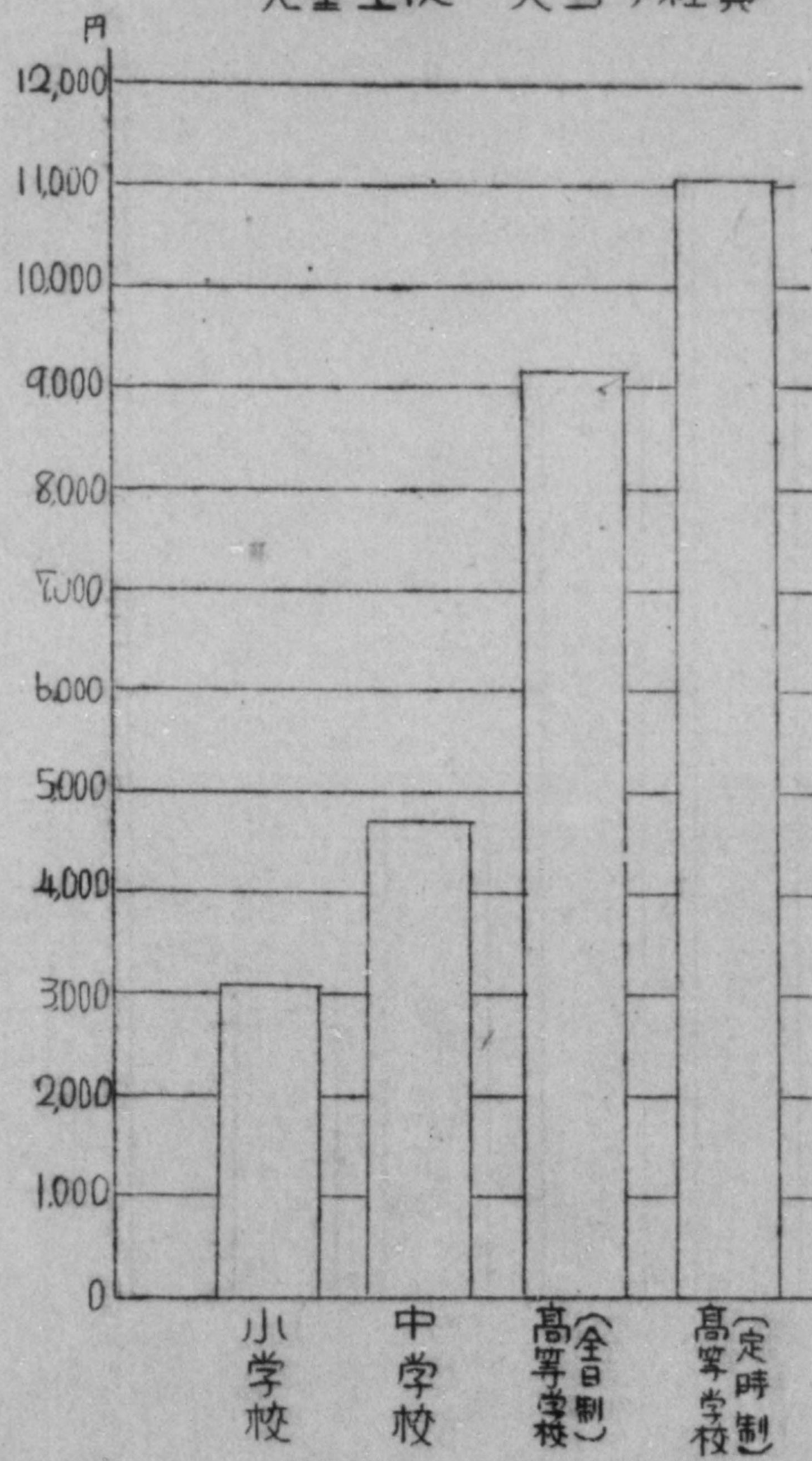
④ 財源別百分率

| | 公費 | その他 | 計 |
|---------|-------|-------|------|
| 小学校 | 95.9% | 4.1% | 100% |
| 中学校 | 95.8% | 4.2% | " " |
| 高校(全日制) | 89.8% | 10.2% | " " |
| " (定時制) | 97.2% | 2.8% | " " |

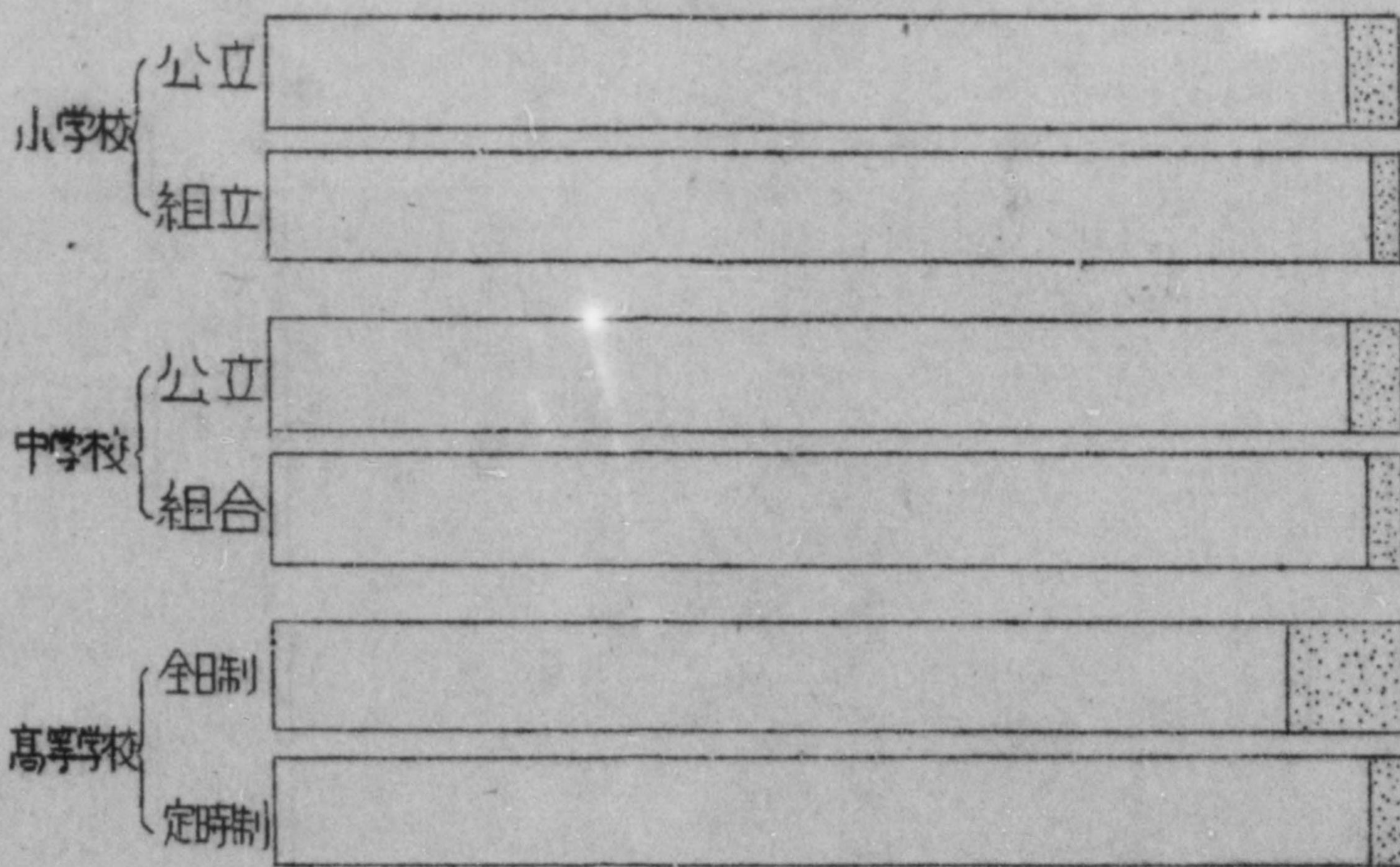




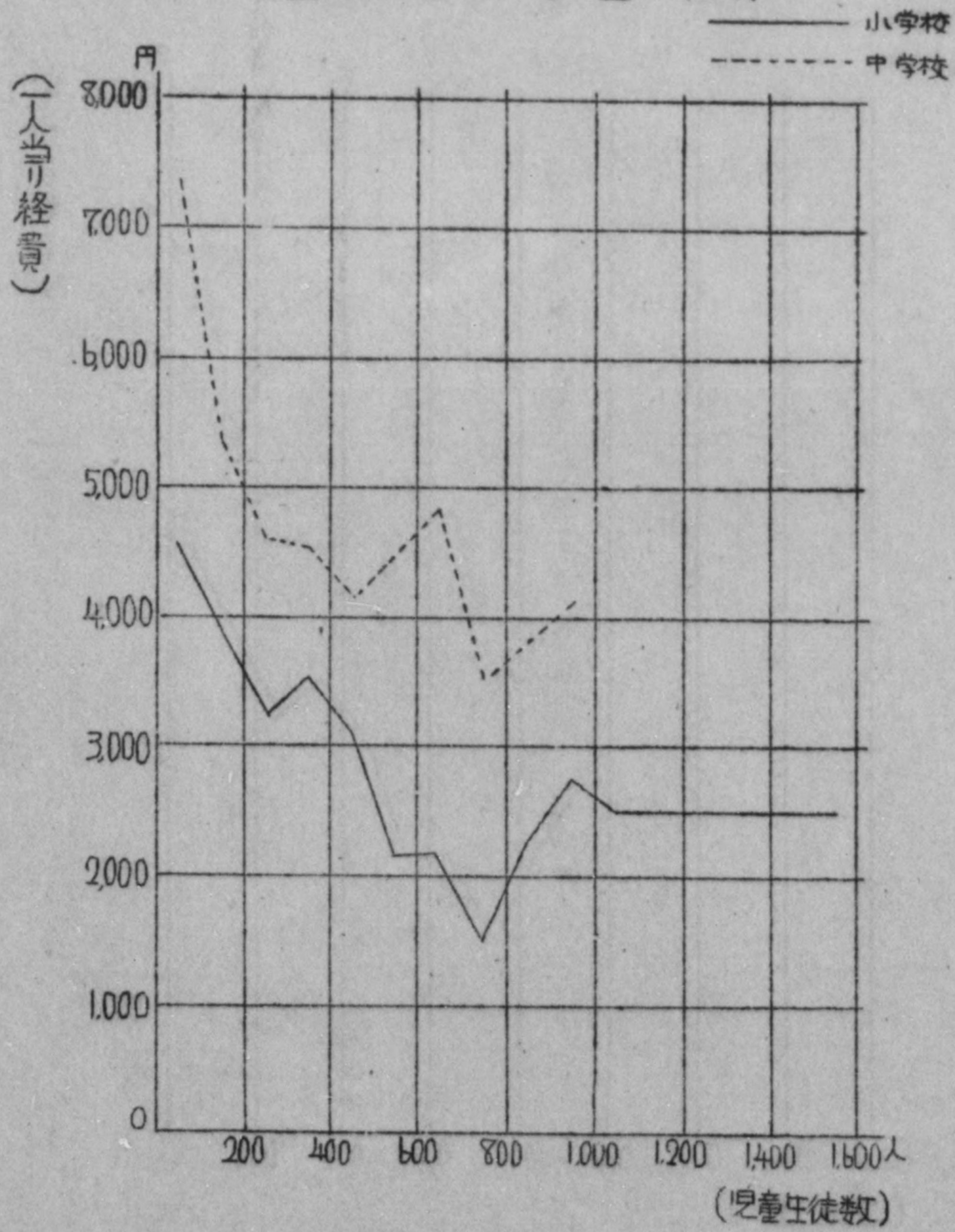
学校段階別
児童生徒一人当り経費

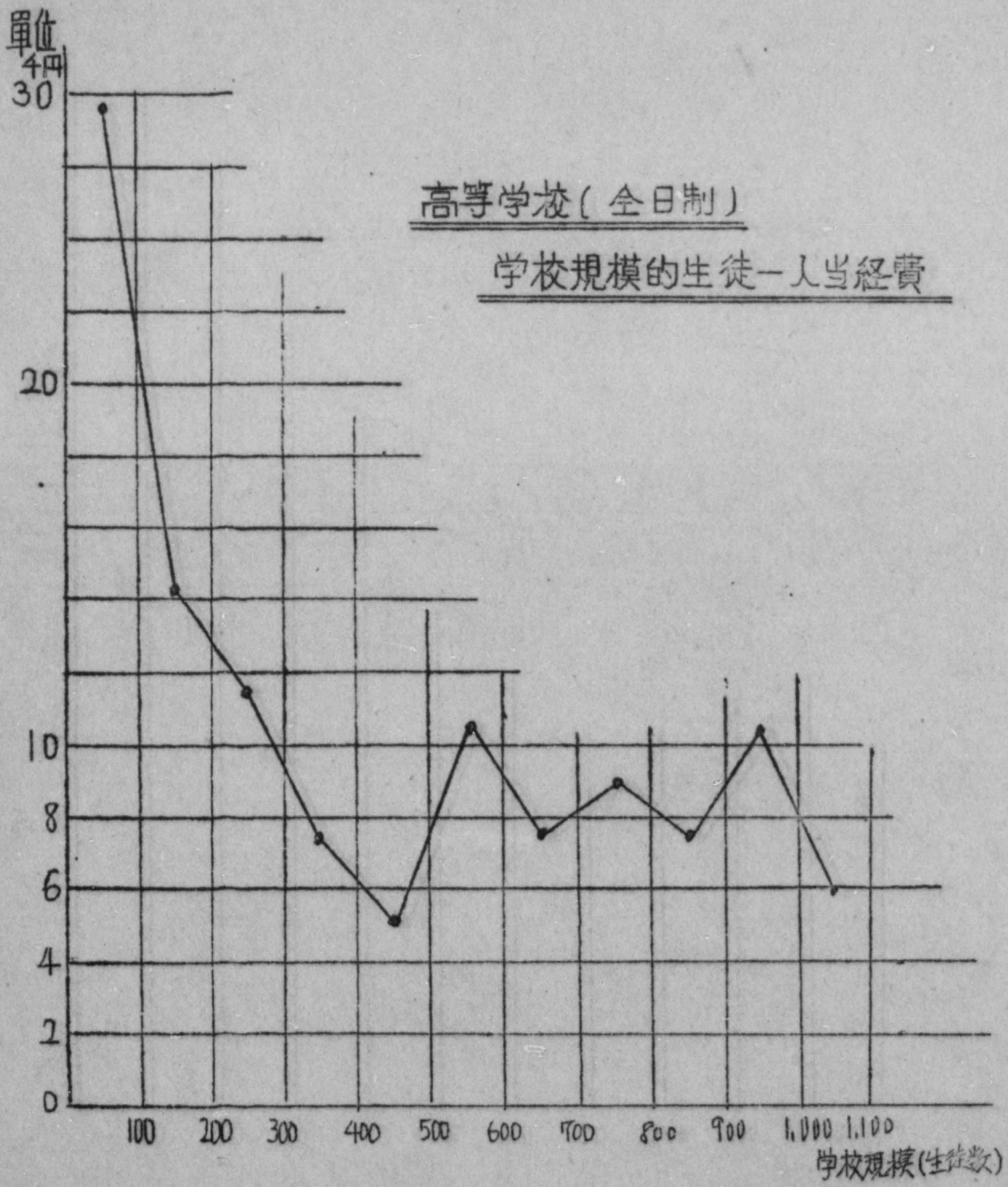


公費と私費の百分率 (Ⅱ～Ⅳの合計)



児童生徒数別一人当り経費





調査の反省

調査の集計発表の遅れたことをオ一に挙げなければならない。

遅れた理由

1. 学校の報告が遅れた所が多かった。再三督促を出してはならなかった。
2. 周知説明会に欠席した学校が多かった。
3. 学校の誤記、とくに計が合れないところが多かった。
4. 多くの調査を一度にやったため、調査担当者が後仕末出来なかった。集計能力というより、調査のやりっぱなしという実が見える。

こん度の調査は消費的支出に主眼をおいたが、児童生徒一人当りの経費が小学校で3,141円、中学で4,146円、全日制高校で9,137円、定時制高校で11,091円となつたが、これは最低水準を示すものと見なければならない。

財源の「その他」はP.T.A.、後援会より出た現金のみで、現物寄附、労力寄附は「その他」に入れていた。年々計上すべき経費でも五年以上使用可能な備品、設備費は「臨時費」に入れて、上の一人当りには入れていない実、注意すべきである。尚更に疑問となるのは、~~可能~~五年以内使用可能なものの、可能使用年数で割つた。一年間の消費金額に換算されていのか。例えば24年分購入した四年使用出来のものは、その1/4が24年分として計上されていのか。23年に四年間使用出来のものを購入した場合、その1/4は24年分には入っていないことである。

これらの点を考慮すれば、年々計上すべき消費的支出は更に増大おぼしきと明記せねばならぬ。

(Y.M. 生記)

273
 1/27/51
 JY
 DJ

Educational Budget

Investigation Sect., Kagawa
 Ken school Board

| Item | Fiscal 1951 yen | Fiscal 1950 yen |
|------------------------------|--------------------|--------------------|
| School Board | 32,455,016 | 22,465,750 |
| Primary schools | 371,826,281 | 326,167,398 |
| Lower Secondary schools | 230,228,687 | 218,936,720 |
| Full time Secondary schools | 151,288,936 | 106,821,352 |
| Part-time Secondary schools | 78,915,976 | 48,586,750 |
| Blind and Deaf, schools | 9,856,695 | 6,649,635 |
| Correspondence Educations | 1,382,290 | 702,318 |
| Kindergartents | 458,359 | 313,462 |
| Libries | 13,494,076 | 7,421,608 |
| 香川縣教育委員會 | | |
| Social Education | 23,936,284 | 6,759,386 |
| Health and Athletics | 11,733,950 | 4,301,600 |
| Sanatoriums for Tuberculosis | | |

| | | |
|--|---------------|-------------|
| Blind and Deaf schools | 13,715,776 | 43,586,750 |
| Correspondence Educations | 9,856,695 | 6,649,635 |
| Kindergartents | 1,382,290 | 702,318 |
| Libries | 458,359 | 313,462 |
| | 13,494,076 | 7,421,608 |
| 香川縣教育委員會 | | |
| Social Education | 23,936,284 | 6,759,386 |
| Health and Athletics | 11,733,950 | 4,301,600 |
| Sanatoriums for Teachers | 19,772,520 | — |
| Educational Guidance | 17,376,300 | 6,862,278 |
| Investigation | 2,013,509 | 703,400 |
| Public Information | 1,237,070 | 479,500 |
| Utilities and Repairs of Prefectural schools | 158,665,000 | 83,907,559 |
| Miscellaneous | 52,692,348 | 37,023,490 |
| Subsidies | 1,549,000 | 714,800 |
| Total | 1,178,882,297 | 878,817,006 |
| Fiscal 1951 is proposed budget. | | |
| Fiscal 1950 is present (on Dec. 1950) | | |

273 ✓

Kamikasai Lower Secondary School; Kagawa-gun, Kagawa-Ken

February, 1950

School Expense

| | | |
|------|---|------------|
| I. | <u>Expenses of Administration</u> | (Unit yen) |
| | 1. Salary of principal | 78,671 |
| | 2. Travel expense of principal | 5,454 |
| | 3. Salary of school servant | 36,000 |
| | 4. Office equipment expense | 2,000 |
| | 5. Office supplies expense | 14,754 |
| | Total | 136,879 |
| II. | <u>Expenses of Instruction</u> | |
| | 1. Teachers' salaries | 569,240 |
| | 2. Teachers' travel expenses | 24,328 |
| | 3. Classroom supplies expenses | 53,410.50 |
| | 4. Expenses of students activities | 97,104.30 |
| | 5. Classroom equipment expenses | 42,213.10 |
| | Total | 786,295.90 |
| III. | <u>Expenses of Operation</u> | |
| | 1. Fuel expense | 21,500 |
| | 2. Light, heat expense | 100 |
| | 3. Print and book-binding expense | 12,000 |
| | 4. Communication and transportation expense | 458 |
| | 5. Miscellaneous expense | 7,230 |
| | Total | 41,288 |
| IV. | <u>Expense of Maintenance</u> | |
| | 1. Simple repairs expense | 2,668 |
| | 2. Resupply of essential materials | 1,200 |
| | 3. Miscellancous expense | 150 |
| | Total | 4,018 |
| | Grand Total | 968,480.90 |
| V. | Number of school children | 309 |
| VI. | Average daily attendance of children in this year | 296 |
| VII. | School expense of a child | * 3,270 |

* This figures is a little (about ¥200) lower than the average figure. Because this school use the facilities and equipments helping each other with the primary school.

School Board

Amount of Educational Budget (Fiscal 1951)

Investigation Sect., Kagawaken

School Board

| Item | Required by School Board | Approved by Governor Passed by Prefectural Assembly |
|-----------------------------|--------------------------|--|
| School Board | 32,455.016 | 25,419.721 |
| Primary schools | 371,826,281 | 428,974,775 |
| Lower Secondary schools | 230,228,687 | 271,723,022 |
| Full time Secondary schools | 151,288,936 | 143,370,306 |
| Part time Secondary schools | 78,915,976 | 55,320,063 |
| Blind and Deaf schools | 9,856,695 | 9,214,396 |
| Correspondence Educations | 1,382,290 | 769,859 |
| Kindergartents | 458,359 | 404,115 |
| Libraries | 13,494,076 | 7,197,807 |

香川縣教育委員會

| | | |
|--------------------------|------------|-----------|
| Social Education | 23,936,284 | 3,444,800 |
| Health and Athletics | 11,733,950 | 1,514,970 |
| Sanatoriums for Teachers | 9,000,520 | — |

Correspondence Expenditures

1,382,270

767,857

Kindergartens

458,359

404,115

Libraries

13,494,076

7,197,807

香川縣教育委員會

Social Education

23,936,284

3,444,800

Health and Athletics

11,733,950

1,514,970

Sanatoriums for Teachers

19,772,520

—

Educational Guidance

17,376,300

4,807,820

Investigation

2,013,509

386,000

Public Information

1,237,070

200,000

Utilities and Repairs of Prefectural schools

158,665,000

10,971,600

Miscellaneous

52,692,348

46,231,350

Subsidies

1,549,000

—

Total

1,178,882,297

1,009,950,584

(Unit: yen)

Personal Expenses based on 6307yen level.

Personal Expenses based on 7981yen level.

昭和26年度教育費予算額調

香川縣教育委員會事務局 調査課

| 科目 | 教育委員會要求額 | 知事査定額 | 議會議決額 |
|----------|-------------------------|-------------------------|-------------------------|
| 教育委員會費 | 32,455,016 ^A | 25,419,721 ^A | 25,419,721 ^A |
| 小學校費 | 371,826,281 | 428,974,775 | 428,974,775 |
| 中學校費 | 230,228,687 | 271,723,022 | 271,723,022 |
| 全日制高校費 | 151,288,936 | 143,370,306 | 143,370,306 |
| 定時制高校費 | 78,915,976 | 55,320,063 | 55,320,063 |
| 盲ろう學校費 | 9,856,695 | 9,214,396 | 9,214,396 |
| 通信教育費 | 1,382,290 | 769,859 | 769,859 |
| 幼稚園費 | 458,359 | 404,115 | 404,115 |
| 圖書館費 | 13,494,076 | 7,197,807 | 7,197,807 |
| 社會教育費 | 23,936,284 | 3,444,800 | 3,444,800 |
| 香川縣教育委員會 | | | |
| 保健體育費 | 11,733,950 | 1,514,970 | 1,514,970 |
| 教員保養所費 | 19,772,520 | — | — |
| 教育指導費 | | | |

| | 458,359 | 404,115 | 404,115 |
|----------|-----------------|----------------------|---------------|
| 図書館費 | 13,494,076 | 7,197,807 | 7,197,807 |
| 社会教育費 | 23,936,284 | 3,444,800 | 3,444,800 |
| 香川縣教育委員會 | | | |
| 保健体育費 | 11,733,950 | 1,514,970 | 1,514,970 |
| 教員保養所費 | 19,772,520 | — | — |
| 教育指導費 | 17,376,300 | 4,807,820 | 4,807,820 |
| 調査費 | 2,013,509 | 386,000 | 386,000 |
| 弘報費 | 1,237,070 | 200,000 | 200,000 |
| 縣立學校官籍費 | 158,665,000 | 10,971,600 | 10,971,600 |
| 教育諸費 | 52,692,348 | 46,231,330 | 46,231,330 |
| 教育費補助 | 1,549,000 | — | — |
| 歳出合計 | 1,178,882,297 | 1,009,950,584 | 1,009,950,584 |
| | 人件費は6307円ベースによる | 人件費は新ベースによる 7981円 | |

Educational Budget for 1950
in Kagawa

Research Section, Kagawa B.E.

| Item | Budget at the beginning | The present budget in March 1951 |
|---|-------------------------|----------------------------------|
| Board of Education | 23,730,300 | 22,525,705 |
| Primary School | 324,410,398 | 326,167,398 |
| Lower Secondary School | 217,868,720 | 218,936,720 |
| Upper Secondary School | 106,440,352 | 106,821,352 |
| Part-time Upper S.S. | 48,252,634 | 48,586,750 |
| Blind & Deaf School | 6,619,635 | 6,738,636 |
| Correspondence Education | 703,518 | 702,318 |
| Kindergarten | 314,762 | 313,462 |
| Library | 4,523,208 | 7,421,608 |
| Social Education | 7,600,000 | 7,209,386 |
| Health & Physical Education | 4,809,200 | 4,484,000 |
| Educational Guidance | 4,800,000 | 7,484,000 |
| Research & Statistics | 800,000 | 703,400 |
| Information | 500,000 | 479,500 |
| Repairs and maintainance of public school | 25,397,360 | 83,774,259 |
| Miscellaneous | 37,082,800 | 41,142,808 |
| Supplement | 214,800 | 1,314,800 |
| Reconstruction for the damaged shools in 1949 | | 1,558,045 |
| Raised up of the salary | | 95,829,709 |
| Total | 814,067,687 | 982,582,109 |

| Budget for 1951 | Budget of B.E. | The prefectural budget |
|-----------------------|----------------|------------------------|
| Original | ¥1,178,882,297 | 3,894,530,623 |
| Revised budget | 1,009,950,584 | 3,081,388,640 |
| Final approved budget | 1,009,950,584 | 3,081,388,640 |

195

275

一) 昭和25年度 教育予算額調

香川縣教育委員會事務局 調査課
三月現計予算

| 科目 | 当初予算 | 三月現計予算 |
|----------|-------------|-------------|
| 教育委員会費 | 23,730,300 | 22,525,705 |
| 小學校費 | 324,410,398 | 326,167,398 |
| 中學校費 | 217,868,720 | 218,936,720 |
| 全日制高校費 | 106,440,352 | 106,821,352 |
| 定時制高校費 | 48,252,634 | 48,586,750 |
| 盲ろう学校費 | 6,619,635 | 6,738,636 |
| 通信教育費 | 703,518 | 702,318 |
| 幼稚園費 | 314,762 | 313,462 |
| 図書館費 | 4,523,208 | 4,421,608 |
| 社会教育費 | 7,600,000 | 7,209,386 |
| 香川縣教育委員會 | | |
| 保健体育費 | 4,809,200 | 4,484,000 |
| 教育指導費 | 4,800,000 | 7,872,253 |
| 関係機関費 | | |

| | | |
|----------------|-------------|-------------|
| 功社回員 | 314,762 | 313,462 |
| 圖書館費 | 523 | |
| 社會教育費 | 4,325,208 | 4,421,608 |
| | 7,600,000 | 7,209,386 |
| 香川縣教育委員會 | | |
| 保健體育費 | 4,809,200 | 4,484,000 |
| 教育指導費 | 4,800,000 | 7,872,253 |
| 調查統計費 | 800,000 | 703,400 |
| 弘報費 | 500,000 | 479,500 |
| 縣立學校管理費 | 25,397,360 | 83,774,259 |
| 教育諸費 | 37,082,800 | 41,142,808 |
| 教育費補助 | 214,800 | 1,314,800 |
| 昭和三十四年度災害子校復旧費 | | 1,558,045 |
| 職員給与交書費 | | 95,829,709 |
| 合計 | 814,067,687 | 982,582,109 |

一、來年度予算について

| | A 教育委員會所管額 | B 縣總額 | AのBに対する比率 |
|-------|---------------|---------------|-----------|
| | 円 | 円 | % |
| 要求額 | 1,178,882,297 | 38,945,0623 | 30.3 |
| 知事査定額 | 1,009,950,584 | 3,081,388,640 | 32.8 |
| 議會議決額 | 1,009,950,584 | 3,081,388,640 | 32.8 |

School Cost

1949

昭和二十四年度

学校経費

香川県教育委員会事務

調査課

Kagawa B. E. Sec
Research

school cost

1949

Requested by the Nombusho.

和二十四年度

調費經交

教育委員會事務局

調查課

Yagawa B. E. Secretariat
Research Section

昭和二十四年度 学校経費(消費的支出) 調

Investigation of School Expense on 1949
— Ordinary expenditure —

昭和=

| 區分 division | ① No. of Sch. | ② No. of Teacher | ③ No. of Child | ④ From Nation & Prefecture | ⑥ Expense of a child | ⑤ From City, Town, Village | ⑦ Expense of a child | ⑧ Total ④+⑤ |
|-----------------------------------|------------------|---------------------|-------------------|-------------------------------|-------------------------|-------------------------------|-------------------------|----------------|
| | | | | 円 | 円 | 円 | 円 | 円 |
| 小学校 Primary Sch. | 254 | 3512 | 125838 | 328,913,014 | 2.613 | 93,446,613 | 743 | 422,359,627 |
| 中学校 E. S. Sch. | 185 | 2080 | 58,905 | 210,173,703 | 3.568 | 56,845,566 | 965 | 267,019,269 |
| 盲ろう学校 Blind & Deaf Sch. | 2 | 42 | 229 | 6,664,084 | 29,100 | — | — | 6,664,084 |
| 全日制高等学校 H. S. Sch. — full time | 26 | 775 | 14,262 | 112,314,335 | 7.875 | 10,984,504 | 770 | 123,298,839 |
| 定時制高等学校 H. S. Sch. — part time | 54 | 285 | 5,501 | 40,806,461 | 7.418 | 1,389,756 | 252 | 42,196,417 |
| 幼稚園 Infancy Sch. | 31 | 117 | 4,537 | 238,467 | 52 | 8,983,084 | 1,979 | 9,221,551 |
| 通信教育 Correspondence Dept. | 2 | 2 | 300 | 65,685 | 2,189 | — | — | 65,685 |
| 計 Total | 554 | 6,813 | 209,572 | 699,766,915 | 3.339 | 171,649,723 | 819 | 871,416,638 |

費(消費的支出) 調

昭和二十五年九月五日 香川縣教育委員會事務局調査課
5th Oct. 1950 KAGAWA School Board Research Sect.

Expense on 1949
of expenditure

| 市町村費 From City, Town, Village | 幼兒兒童 生徒一人當額 Expense of a child | 國縣市 町村費 Total ④+⑤ | 幼兒兒童 生徒一人當額 Expense of a child | 寄附 From Contribution | 幼兒兒童 生徒一人當額 Expense of a child | 經費總額 Grand Total ⑥+⑦ | 一人當 Expense of a child | 百分比 % Expense with Prim. Sch. |
|----------------------------------|--------------------------------------|----------------------------|--------------------------------------|-------------------------|--------------------------------------|----------------------------|---------------------------|----------------------------------|
| 円 | 円 | 円 | 円 | 円 | 円 | 円 | 円 | % |
| 93,446.613 | 743 | 422,358.627 | 3,356 | 35,425.993 | 281 | 457,785.620 | 3.637 | 100% |
| 56,845.566 | 965 | 267,019.269 | 4,533 | 23,788.212 | 403 | 290,807.481 | 4.936 | 136% |
| — | — | 6,664.084 | 29,100 | 160.687 | 702 | 6,824.771 | 29.802 | 819% |
| 10,984.504 | 770 | 123,298.839 | 8,645 | 18,261.417 | 1,280 | 141,560.256 | 9.925 | 273% |
| 1,389.956 | 252 | 42,196.417 | 7,670 | 2,871.904 | 522 | 45,068.321 | 8.192 | 225% |
| 8,983.084 | 1,979 | 9,221.551 | 2,032 | 1,142.781 | 252 | 10,364.332 | 2.284 | 63% |
| — | — | 656.851 | 2,189 | — | — | 656.851 | 2.189 | 60% |
| 171,649.723 | 819 | 871,416.638 | 4,158 | 81,650.994 | 390 | 953,067.632 | 4.548 | 125% |

(Unit; Yen)

昭和二十四年度全

| | | |
|-----|-------|---------|
| 学校数 | 教員数 | 生徒数 |
| 554 | 6,813 | 209,572 |

| 支出項目 | 財源の種類 | I 起債・寄附以外の公費 | | |
|-------------|--------------------|--------------|-------------|---------------|
| | | II 国 道 府 縣 | III 市 町 村 | 計 |
| A 消費的支出 | 2-1 校長の給与手当 | 61,383,697 | 892,648 | 62,276,345 |
| | 2-2 教諭助教前作勤務中の給与手当 | 547,166,121 | 16,749,507 | 563,915,628 |
| | 2-3 教諭助教前作勤務中の給与手当 | 5,964,399 | 1,316,332 | 7,280,731 |
| | 2-4 事務職員等の給与手当 | 7,701,618 | 1,532,122 | 9,233,740 |
| | 2-5 旅 費 | 28,918,372 | 1,983,756 | 30,902,128 |
| | 2-6 日直宿直手当 | 22,197,054 | 214,313 | 22,411,367 |
| | 計 | 673,331,261 | 22,688,678 | 696,019,939 |
| | 2-7 教授費合計 | 677,588,558 | 67,017,810 | 744,606,368 |
| | 3 維持費合計 | 11,311,901 | 37,608,036 | 48,919,937 |
| | 4 修繕費合計 | 5,649,630 | 47,778,968 | 53,428,598 |
| 5 サービス費合計 | 1,300,087 | 10,240,408 | 11,540,495 | |
| 6 前定支払金合計 | 3,809,035 | 7,729,843 | 11,538,878 | |
| 9 その他の消費的支出 | 107,704 | 1,274,658 | 1,382,362 | |
| 消費的支出總計 | 699,766,915 | 171,649,723 | 871,416,638 | |
| B 資本的支出 | | 45,803,881 | 174,918,440 | 220,722,321 |
| C 債券償還費 | | - | 2,656,161 | 2,656,161 |
| 学校経費總額 | | 745,570,796 | 349,224,324 | 1,094,795,120 |

昭和二十四年度全学校经费の集計表

生徒数
109,572

香川県教育委員会 課長 課

| Ⅲ 市町村 | | Ⅳ 寄附 | Ⅴ 起債 | 合計 | 生徒1人当 金額 | 職員手当 等 |
|-------------|---------------|-------------|------------|---------------|---------------|-----------|
| 892,648 | 62,276,345 | 9,300 | — | 62,285,645 | | |
| 16,749,507 | 563,915,628 | 333,747 | — | 564,249,375 | | |
| 1,316,332 | 7,280,731 | 254,073 | — | 7,534,804 | | |
| 1,532,122 | 9,233,740 | 8984 | — | 9,242,724 | | |
| 1,983,756 | 30,902,128 | 3,626,675 | — | 34,528,803 | | |
| 214,313 | 22,411,367 | 82,026 | — | 22,493,393 | | |
| 22,688,678 | 696,019,939 | 4,314,805 | — | 700,334,744 | | 73.48010 |
| 67,017,810 | 744,606,368 | 49,461,845 | — | 794,068,213 | | |
| 37,608,036 | 48,919,939 | 4,344,527 | — | 53,264,464 | | |
| 47,778,968 | 53,428,598 | 14,078,265 | — | 67,506,863 | | |
| 10,240,408 | 11,540,495 | 11,942,186 | — | 23,482,681 | | |
| 7,729,843 | 11,538,878 | 372,979 | — | 11,911,857 | | |
| 1,274,658 | 1,382,362 | 1,451,192 | — | 2,833,554 | | |
| 171,649,723 | 871,416,638 | 81,650,994 | — | 953,067,632 | 4.40円 3547 | |
| 174,918,440 | 220,722,321 | 50,240,709 | 46,985,272 | 317,948,302 | | |
| 2,656,161 | 2,656,161 | 25,000 | — | 2,681,161 | | |
| 349,224,324 | 1,094,795,120 | 131,916,703 | 46,985,272 | 1,273,697,095 | | |

昭和二十四年度小學校經費の縣集

| | | |
|-----|------|---------|
| 學校數 | 教員數 | 児童數 |
| 254 | 3512 | 125,838 |

| 支出項目 | | 財源の種類 | I 起債・寄附以外の公費 | | | IV |
|------|-------------------|---------------------|-------------------------|---------------------|-------------------------|------|
| | | | II 國都道府縣 | III 市町村 | 計 | |
| A | 2 1) 教職員の給与・手当 | a 校長の給与・手当 | 31,318,588 ^H | 80,158 ^A | 31,398,746 ^A | |
| | | b 教諭・助教諭・常勤講師の給与・手当 | 269,035,372 | 1,409,533 | 270,444,905 | 11 |
| | | c 非常勤講師・助手の給与・手当 | — | 36,200 | 36,200 | |
| | | d 事務職員等の給与・手当 | — | 139,483 | 139,483 | |
| | | e 旅費 | 14,381,983 | 778,874 | 15,160,857 | 1.0 |
| | | f 日直・夜直手当 | 10,828,259 | 43,548 | 10,871,807 | |
| | | 計 | 325,564,202 | 2,487,796 | 328,051,998 | 1.1 |
| | | 教授費合計 | 326,996,255 | 26,279,750 | 353,276,005 | 18.8 |
| | 3 | 維持費合計 | — | 22,825,550 | 22,825,550 | 1.3 |
| | 4 | 修繕費合計 | 331,267 | 32,571,365 | 32,902,632 | 7.2 |
| 5 | カーゼス費合計 | 336,354 | 7,062,257 | 7,398,611 | 7.4 | |
| 6 | 所定支払金合計 | 1,249,138 | 4,324,611 | 5,573,749 | 7.4 | |
| 9 | その他の消費的支出 | — | 383,080 | 383,080 | 4.4 | |
| | 消費的支出總計 | 328,913,014 | 93,446,613 | 422,359,627 | 35.1 | |
| B | 資本的支出 | 7,360,730 | 47,511,613 | 54,871,843 | 11.1 | |
| C | 債務償還費 | — | 542,600 | 542,600 | | |
| | 學校經費總額 | 336,273,244 | 141,500,826 | 477,774,070 | 44.7 | |

度小學校經費の縣集計表

香川縣教育委員會 調査課

電 数
838

| 寄附以外の公費 | | IV 寄 附 | V 起 債 | 合 計 | VI 地方交付金 | VII 教育費の増減 （前年度比） |
|---------------------|-------------------------|--------------------|----------------|-------------------------|--------------------|----------------------|
| 市町村 | 計 | | | | | |
| 80,158 ^A | 31,398,746 ^A | 4,800 ^A | — ^A | 71,403,546 ^A | | |
| 1,409,533 | 270,444,905 | 110,785 | — | 270,555,690 | | |
| 36,200 | 36,200 | — | — | 36,200 | | |
| 139,483 | 139,483 | — | — | 139,483 | | |
| 778,874 | 15,160,857 | 1,001,796 | — | 16,162,633 | | |
| 43,548 | 10,871,807 | 1,700 | — | 10,873,507 | | |
| 487,796 | 328,051,998 | 1,119,061 | — | 329,171,059 | | 71.91 % |
| 279,750 | 353,276,005 | 18,807,265 | — | 372,083,270 | | |
| 825,550 | 22,825,550 | 1,312,640 | — | 24,138,190 | | |
| 571,365 | 32,902,632 | 7,240,060 | — | 40,142,692 | | |
| 062,257 | 7,398,611 | 7,481,403 | — | 14,880,014 | | |
| 324,611 | 5,573,749 | 88,388 | — | 5,662,137 | | |
| 383,080 | 383,080 | 496,237 | — | 879,317 | | |
| 446,613 | 422,359,627 | 35,425,993 | — | 457,785,620 | 3,637 ^A | |
| 511,613 | 54,871,843 | 11,660,359 | 23,500,000 | 90,032,202 | | |
| 542,600 | 542,600 | — | — | 542,600 | | |
| 500,826 | 477,774,070 | 47,076,352 | 23,400,000 | 548,360,422 | | |

昭和二十四年度 中學校經費決算

| | | |
|-----|------|--------|
| 學校數 | 教員數 | 生徒數 |
| 185 | 2080 | 58,905 |

| 支出項目 | | 財源の種類 | I 起債・寄附以外ノ公費 | | |
|-------------|---------|--------------------|-------------------------|---------------------|-------------------------|
| | | | II 國・都・道・府・縣 | III 市・町・村 | 計 |
| A | 消費的支出 | (1) a. 校長の給與手当 | 25,562,453 ^円 | 68,912 ^円 | 25,632,365 ^円 |
| | | b. 教諭・教諭・常勤講師の給與手当 | 169,249,474 | 1,331,066 | 170,580,480 |
| | | c. 非常勤講師の給與手当 | — | 889,118 | 889,118 |
| | | d. 事務職員の給與手当 | — | 685,997 | 685,997 |
| | | e. 旅費 | 8,696,114 | 768,543 | 9,464,657 |
| | | f. 日直・宿直手当 | 8,563,972 | 81,107 | 8,645,079 |
| | | 計 | 212,073,013 | 3,825,183 | 215,898,196 |
| | | 教授費合計 | 209,151,676 | 23,269,488 | 232,421,164 |
| | | 3 維持費合計 | — | 12,821,242 | 12,821,242 |
| | | 4 修繕費合計 | 68,083 | 14,483,624 | 14,551,707 |
| 5 ガーゼ又費合計 | 56,194 | 2,814,111 | 2,870,305 | | |
| 6 所定支払金合計 | 897,750 | 2,867,851 | 3,765,601 | | |
| 9 その他の消費的支出 | — | 589,250 | 589,250 | | |
| 消費的支出總計 | | 210,173,703 | 56,845,566 | 267,019,269 | |
| B | 資本的支出 | 22,322,980 | 120,604,513 | 142,927,493 | |
| C | 債務償還費 | — | 2,113,151 | 2,113,151 | |
| 學校經費總額 | | 232,496,683 | 179,563,230 | 412,059,913 | |

二十四年度 中學校經費之縣集計表

香川縣教育委員會調查課

能教
205

| 寄附以外之公費 | | IV 寄附 | V 起債 | 合計 | VI 全額一人當條額 | VII 教職員給子給外消費の支出總計中比率的百分 |
|---------------------|-------------------------|--------------------|----------------|-------------------------|---------------------|--------------------------|
| 市町村 | 計 | | | | | |
| 68,912 ^円 | 25,632,365 ^円 | 4,500 ^円 | — ^円 | 25,636,865 ^円 | | |
| 6,331,006 | 170,530,480 | 134,550 | — | 170,715,030 | | |
| 789,118 | 889,118 | 201,550 | — | 1,091,168 | | |
| 685,997 | 685,997 | 800 | — | 686,797 | | |
| 768,543 | 9,464,657 | 952,871 | — | 10,417,528 | | |
| 81,107 | 8,145,077 | 38,847 | — | 8,683,926 | | |
| 825,183 | 215,878,196 | 1,333,118 | — | 217,231,314 | | 74.70 % |
| 269,488 | 232,421,164 | 16,213,604 | — | 248,634,768 | | |
| 821,242 | 12,821,242 | 1,242,605 | — | 14,063,847 | | |
| 483,624 | 14,551,707 | 3,287,855 | — | 17,834,562 | | |
| 2,814,111 | 2,870,305 | 2,464,422 | — | 5,334,727 | | |
| 867,851 | 3,765,601 | 146,545 | — | 3,912,146 | | |
| 589,250 | 589,250 | 438,181 | — | 1,027,431 | | |
| 845,566 | 267,019,269 | 23,788,212 | — | 290,807,481 | 11.936 ^円 | |
| 0.604,513 | 142,927,493 | 33,715,964 | 20,890,000 | 197,533,457 | | |
| 2,113,151 | 2,113,151 | — | — | 2,113,151 | | |
| 2,563,230 | 412,059,913 | 57,504,176 | 20,890,000 | 490,454,089 | | |

昭和二十四年度盲聾学

| 学校数 | 教员数 | 生徒数 |
|-----|-----|-----|
| 2 | 42 | 229 |

| 支出項目 | | 財源の種類 | I 起債 寄附以外の公費 | | |
|------------|-------------------|-----------------|----------------------|----------------|----------------------|
| | | | II 国都道府縣 | III 市町・村 | 計 |
| A 消費的支出 | 2 b 教員の給与手当 | (1) a 校長の給与手当 | 352,146 ^円 | — ^円 | 352,146 ^円 |
| | | b 教諭助教常勤講師の給与手当 | 4,351,492 | — | 4,351,492 |
| | | c 非常勤講師助手の給与手当 | 60,541 | — | 60,541 |
| | | d 事務職員給与手当 | 222,611 | — | 222,611 |
| | | e 旅費 | 152,790 | — | 152,790 |
| | | f 日直宿直手当 | 135,145 | — | 135,145 |
| | | 計 | 5,274,725 | — | 5,274,725 |
| | 教授費合計 | 5,351,592 | — | 5,351,592 | |
| | 3 | 維持費合計 | 492,168 | — | 492,168 |
| | 4 | 修繕費合計 | 213,593 | — | 213,593 |
| 5 | サービス費合計 | 580,527 | — | 580,527 | |
| 6 | 所定支払金合計 | 26,224 | — | 26,224 | |
| 9 | その他の消費的支出 | — | — | — | |
| | 消費的支出總計 | 6,664,084 | — | 6,664,084 | |
| B | 資本的支出 | 829,032 | — | 829,032 | |
| C | 債務償還費 | — | — | — | |
| - 学校経費總額 | | 7,493,116 | — | 7,493,116 | |

昭和二十四年度盲聾学校経費の集計表

生徒数

229

| IV 市町村 | IV 寄附 | V 起債 | 合計 | 生徒1人当額 | 特殊費割合 |
|--------|---------|------|-----------|--------|--------|
| — | — | — | 352,146 | | |
| — | — | — | 4,351,492 | | |
| — | — | — | 60,541 | | |
| — | — | — | 222,611 | | |
| — | 2,500 | — | 155,290 | | |
| — | — | — | 135,145 | | |
| — | 2,500 | — | 5,274,725 | | 77.32% |
| — | 77,709 | — | 5,429,301 | | |
| — | 4,392 | — | 492,168 | | |
| — | 9,406 | — | 213,573 | | |
| — | 69,180 | — | 580,527 | | |
| — | — | — | 26,224 | | |
| — | — | — | — | | |
| — | 160,687 | — | 6,664,084 | 29,842 | |
| — | 20,500 | — | 829,032 | | |
| — | — | — | — | | |
| — | 181,187 | — | 7,493,116 | | |

昭和二十四年度 高等学校(全日制)

| | | |
|-----|-----|--------|
| 学校数 | 教員数 | 生徒数 |
| 26 | 775 | 14,262 |

| 支出項目 | | 財源の種類 | I 起債・寄附以外の公費 | | |
|---------|---|-----------------|------------------------|----------------------|------------------------|
| | | | II 国都道府県 | III 市町村 | 計 |
| A | 2 1 b 教 職 員 の 給 与 手 当 | (1) a 校長の給与・手当 | 4,034,923 ^円 | 194,304 ^円 | 4,229,227 ^円 |
| | | b 教諭助教諭非常勤講師の俸給 | 77,171,778 | 8,146,559 | 85,318,337 |
| | | c 非常勤講師助手の給与手当 | 3,356,012 | 277,488 | 3,633,500 |
| | | d 事務職員給与手当 | 5,471,959 | 565,344 | 6,037,303 |
| | | e 旅費 | 3,116,059 | 105,840 | 3,221,899 |
| | | f 日直・宿直手当 | 2,261,131 | 70,062 | 2,331,193 |
| | | 計 | 95,441,862 | 9,359,597 | 104,801,459 |
| | 教 授 費 合 計 | | 99,048,679 | 2,673,429 | 101,722,108 |
| | 出 | 3 維持費合計 | 7,453,071 | 649,131 | 8,102,202 |
| | | 4 修繕費合計 | 4,316,502 | 114,611 | 4,431,113 |
| | 5 サービス費合計 | 175,171 | 203,066 | 378,237 | |
| | 6 所定支払金合計 | 1,213,208 | 404,267 | 1,617,475 | |
| | 9 その他の消費的支出 | 107,704 | - | 107,704 | |
| 消費的支出総計 | | 112,314,335 | 10,984,504 | 123,298,839 | |
| B 資本的支出 | | 12,593,405 | 5,985,869 | 18,579,274 | |
| C 債務償還費 | | - | 410 | 410 | |
| 学校経費総額 | | 124,907,740 | 16,970,783 | 141,878,523 | |

十四年度 高等学校(全日制) 概算計表

徒数
4,262

香川県教育委員会 調査

| Ⅱ 市町村 | | Ⅲ 寄附 | Ⅳ 起債 | 合計 | 生徒1人当り | 前年度比 |
|------------|------------------------|------------|-----------|------------------------|--------------------|--------|
| 費 | | 計 | | | 金 | 額 |
| 194,304 | 4,229,227 ^円 | - | - | 4,229,227 ^円 | | |
| 8,146,559 | 85,318,337 | 76,712 | - | 85,395,049 | | |
| 277,488 | 3,663,500 | 7,500 | - | 3,711,000 | | |
| 565,344 | 6,037,303 | 8,184 | - | 6,045,487 | | |
| 105,840 | 3,221,899 | 1,470,864 | - | 4,692,763 | | |
| 70,062 | 2,331,193 | 40,279 | - | 2,371,472 | | |
| 9,359,597 | 104,801,459 | 1,603,539 | - | 106,404,998 | | 75.17% |
| 2,613,429 | 108,662,108 | 12,414,177 | - | 121,076,285 | | |
| 649,131 | 8,102,202 | 1,385,358 | - | 9,487,560 | | |
| 114,611 | 4,431,113 | 2,558,039 | - | 6,989,152 | | |
| 203,066 | 578,237 | 1,481,357 | - | 1,859,594 | | |
| 404,267 | 1,617,415 | 74,831 | - | 1,692,306 | | |
| - | 107,704 | 347,655 | - | 455,359 | | |
| 10,984,504 | 123,298,839 | 18,261,417 | - | 141,560,256 | 9,925 ^円 | |
| 5,985,869 | 18,579,274 | 2,811,630 | 2,595,272 | 23,986,176 | | |
| 410 | 410 | 25,000 | - | 25,410 | | |
| 16,970,783 | 141,878,523 | 21,098,047 | 2,595,272 | 165,571,842 | | |

昭和二十四年度定

| | | |
|-----|-----|-------|
| 学校数 | 教員数 | 生徒数 |
| 54 | 285 | 5,501 |

| 支出項目 | | 財源の種類 | I 起債等附以外の公費 | | | IV |
|------|-------------|---------------------|---------------------|---------------------|----------------------|----|
| | | | II 國都道府縣 | III 市町村 | 計 | |
| A | 1) 教員の給与・手当 | a 校長の給与・手当 | 97,587 ^円 | 15,059 ^円 | 112,646 ^円 | |
| | | b 教諭・助教諭・学動講師の給与・手当 | 26,741,088 | 307,200 | 27,048,288 | |
| | | c 非常勤講師・助手の給与・手当 | 2,517,846 | 111,776 | 2,629,622 | |
| | | d 事務取員の給与・手当 | 1,821,179 | 94,224 | 1,915,403 | |
| | | e 旅費 | 2,552,646 | 25,240 | 2,577,886 | |
| | | f 日直宿直手当 | 407,193 | — | 407,193 | |
| | | 計 | 34,137,539 | 553,499 | 34,691,038 | |
| | | 教員費合計 | 36,175,431 | 855,289 | 37,030,720 | 1 |
| | | 3 維持費合計 | 3,362,722 | 266,403 | 3,629,125 | |
| | | 4 修繕費合計 | 716,245 | 56,448 | 772,693 | |
| | 5 サービス費合計 | 151,841 | 59,644 | 211,485 | | |
| | 6 所定支拂金合計 | 400,222 | — | 400,222 | | |
| | 7 その他の消費的支出 | — | 152,172 | 152,172 | | |
| | 消費的支出総計 | 40,806,461 | 1,389,956 | 42,196,417 | 2 | |
| | B 資本的支出 | 2,689,254 | 459,425 | 3,148,679 | 1 | |
| | C 債務償還費 | — | — | — | | |
| | 学校経費総額 | 43,495,715 | 1,849,381 | 45,345,096 | 4 | |

昭和二十四年度定時制高等学校経費の概算計表

数
01

香川県教育委員会 調査課

| 附以外の公費 市町村 | 公費 計 | IV 寄 附 | V 起 債 | 合 計 | VI 生徒1人当りの金額 | 教員等の給与手当 が消費的支出総 計中に占める百分比 |
|---------------|------------|-----------|-------|------------|--------------|----------------------------------|
| 15,059 | 112,646 | — | — | 112,646 | | |
| 307,200 | 27,048,288 | 11,700 | — | 27,059,988 | | |
| 111,776 | 2,629,672 | 44,515 | — | 2,674,187 | | |
| 94,224 | 1,915,403 | — | — | 1,915,403 | | |
| 25,240 | 2,577,886 | 146,669 | — | 2,724,555 | | |
| — | 407,193 | 1,200 | — | 408,393 | | |
| 553,499 | 34,691,038 | 204,084 | — | 34,895,122 | | 77.43% |
| 755,289 | 37,030,720 | 1,563,232 | — | 38,593,952 | | |
| 266,403 | 3,627,125 | 217,186 | — | 3,844,311 | | |
| 56,448 | 772,693 | 739,631 | — | 1,512,324 | | |
| 59,644 | 211,485 | 152,410 | — | 363,895 | | |
| 1 — | 400,222 | 48,651 | — | 448,873 | | |
| 152,172 | 152,172 | 150,794 | — | 302,966 | | |
| 389,956 | 42,196,417 | 2,871,904 | — | 45,068,321 | 8,192 | |
| 459,425 | 3,178,679 | 1,493,884 | — | 4,672,563 | | |
| — | — | — | — | — | | |
| 849,381 | 45,345,096 | 4,765,788 | — | 49,710,884 | | |

昭和二十四年

| | | |
|-----|-----|-------|
| 学校数 | 教员数 | 幼児数 |
| 31 | 117 | 4,537 |

| 支出項目 | | 財源の種類 | I 起債・寄附以外の公費 | | |
|----------------------------|--|--------------------|--------------|----------------------|----------------------|
| | | | II 国都道府県 | III 市町村 | 計 |
| A 消 費 的 支 出 | 2 I D 教 員 の 給 与 手 当 | II 校長の給与手当 | | 534,215 ^A | 534,215 ^A |
| | | III 教諭助教講師助産師の給与手当 | 203,219 | 5,555,209 | 5,758,428 |
| | | IV 非常勤講師助手の給与手当 | | 1,250 | 1,250 |
| | | V 事務取員の給与手当 | | 47,074 | 47,074 |
| | | VI 旅費 | 5,520 | 305,259 | 310,779 |
| | | VII 日直・宿直手当 | | 19,596 | 19,596 |
| | | 計 | 208,739 | 6,462,604 | 6,671,342 |
| | 教員給与費合計 | 213,759 | 6,999,854 | 7,213,613 | |
| | 3 維持費合計 | 3,940 | 1,045,710 | 1,049,650 | |
| | 4 修繕費合計 | 3,960 | 552,920 | 556,880 | |
| 5 サービス費合計 | | 101,330 | 101,330 | | |
| 6 所定支払金合計 | 16,808 | 133,114 | 149,922 | | |
| 9 その他の消費的支出 | | 150,156 | 150,156 | | |
| 消費的支出総計 | 238,467 | 8,983,084 | 9,221,551 | | |
| B 資本的支出 | 8,980 | 357,020 | 366,000 | | |
| C 債務償還費 | | | | | |
| 学校経費総額 | 247,447 | 9,340,104 | 9,587,551 | | |

昭和二十四年度幼稚園經費の歳入計表

児数

4,537

香川縣教育委員會 調査課

| 寄附以外の公費 | | N寄附 | Y起債 | 合計 | 備考 |
|-----------|-----------|-----------|-----|------------|----------------|
| 市町村 | 計 | | | | |
| 534,215 | 534,215 | | | 534,215 | |
| 5,555,209 | 5,758,428 | | | 5,758,428 | |
| 1,250 | 1,250 | 508 | | 1,758 | |
| 47,074 | 47,074 | | | 47,074 | |
| 305,259 | 310,779 | 51,995 | | 362,774 | |
| 19,596 | 19,596 | | | 19,596 | |
| 6,462,604 | 6,671,342 | 52,503 | | 6,723,845 | 35.134 |
| 6,999,854 | 7,213,613 | 385,858 | | 7,599,471 | |
| 1,045,710 | 1,049,650 | 182,346 | | 1,231,996 | |
| 552,920 | 556,880 | 248,274 | | 805,154 | |
| 101,330 | 101,330 | 293,414 | | 394,744 | |
| 133,114 | 149,922 | 14,564 | | 164,486 | |
| 150,156 | 150,156 | 18,325 | | 168,481 | |
| 8,983,084 | 9,221,551 | 1,142,781 | | 10,364,332 | 2,284 2,483 |
| 357,020 | 366,000 | 538,372 | | 904,372 | |
| | | | | | |
| 9,340,104 | 9,587,551 | 1,681,153 | | 11,268,704 | |

昭和二十四年度通信

| | | |
|-----|-----|-----|
| 学校数 | 教员数 | 生徒数 |
| 2 | 2 | 300 |

| 支出項目 | 財源の種類 | I 起 債 券 附 以 外 の 公 費 | | | |
|-------------------|------------------------------|---------------------|---------------------|----------------|---------------------|
| | | II 口 浦 留 存 縣 | 正 市 町 村 | 計 | |
| A 消 費 的 支 出 | 2 1 b 教 員 の 給 与 手 当 | a 校長の給与手当 | 17,000 ^円 | — ^円 | 17,000 ^円 |
| | | b 教諭助教諭非常勤講師の給与手当 | 413,698 | — | 413,698 |
| | | c 非常勤講師・助手の給与手当 | — | — | — |
| | | d 事務職員の給与手当 | 185,869 | — | 185,869 |
| | | e 旅 費 | 13,260 | — | 13,260 |
| | | f 日直宿直手当 | 1,354 | — | 1,354 |
| | | 計 | 631,181 | — | 631,181 |
| | | 教 授 費 合 計 | 651,166 | — | 651,166 |
| | 3 | 維持費合計 | — | — | — |
| | 4 | 修繕費合計 | — | — | — |
| 5 | サービス費合計 | — | — | — | |
| 6 | 所定支払金合計 | 5,685 | — | 5,685 | |
| 9 | その他の消費的支出 | — | — | — | |
| | 消費的支出總計 | 656,851 | — | 656,851 | |
| B | 資本的支出 | — | — | — | |
| C | 債務償還費 | — | — | — | |
| 学校経費總額 | | 656,851 | — | 656,851 | |

昭和二十四年度通信教育学校経費の概算計表

生徒数
300

香川県教育委員会 調査課

| 債 券 附 以 外 の 公 費 | 寄 附 | 起 債 | 合 計 | 生徒 1 人 当 額 | 計 算 上 の 備 考 |
|-----------------|----------|-----|----------|------------|-------------|
| 正 市 町 村 | 許 | | | 金 額 | |
| — 円 | 17,000 円 | — 円 | 17,000 円 | | |
| — | 413,698 | — | 413,698 | | |
| — | — | — | — | | |
| — | 185,869 | — | 185,869 | | |
| — | 13,260 | — | 13,260 | | |
| — | 1,354 | — | 1,354 | | |
| — | 631,181 | — | 631,181 | | 96.09% |
| — | 651,166 | — | 651,166 | | |
| — | — | — | — | | |
| — | — | — | — | | |
| — | — | — | — | | |
| — | 5,685 | — | 5,685 | | |
| — | — | — | — | | |
| — | 656,851 | — | 656,851 | 2,189 円 | |
| — | — | — | — | | |
| — | — | — | — | | |
| — | 656,851 | — | 656,851 | | |

| Miscellaneous expenses | 1949 - 50 | 1950 - 51 |
|---|--------------------|-------------------|
| Correspondence education | ¥ 390,920 | |
| Nurseries | 179,380 | |
| Education study institution | 466,500 | 737,825 |
| School administration | 1,754,600 | 1,650,000 |
| Maintenance of historic sights, scenic spots & natural monuments | 84,000 | 130,000 |
| Investigation of grounds at shrines and temples | 61,600 | 50,000 |
| Important arts | 75,400 | 70,000 |
| Miscellaneous expenses (Resignation allowance, dead allowance, of teachers, Encouragement allowance for the deaf and blind) | 23,915,021 | 34,444,975 |
| Miscellaneous allowance (District allowance, Dependent family allowance, overtime allowance for teachers) | 70,434,183 | - |
| Study expenses for teachers | 8,000,000 | - |
| | <u>105,361,604</u> | <u>37,082,800</u> |

↓
188.896885

↓
OK

DAILY JOURNAL

SECTION

Date:

| TUNE | ACTION |
|------|--------|
| | |

F

| | 1949 - 1950 | 1950 - 1951 |
|--|-------------------|-------------------|
| <u>Board of Education members Expenses</u> | | |
| 6 members' Remuneration | \$ 297,000 | 324,000 |
| 1 member " | <u>16,000</u> | <u>18,000</u> |
| (Travel expenses | 313,000 | 342,000 |
| | <u>200,000</u> | <u>400,000</u>) |
| | | |
| Salary of Superintendent: | 204,000 | 216,000 |
| Travel expenses | 28,000 | 58,000 |
| Miscellaneous allowance | <u>24,000</u> | <u>24,000</u> |
| (Dependent family's allowance only) | 256,000 | <u>298,000</u> |
| | | |
| <u>Secretariat staff's expenses</u> | | |
| Salary of the staff members | 5,994,340 | 11,278,560 |
| Travel expenses of staff | 1,210,630 | 2,583,600 |
| Dependent family allowance | 1,784,689 | 5,524,140 |
| Laborers' wage | 1,000 | 4,000 |
| Social gathering expenses | - | 200,000 |
| Supplies (stationary etc) | 1,594,680 | 3,500,000 |
| Equipments, furnitures | <u>60,500</u> | - |
| | 10,645,839 | <u>23,980,300</u> |
| | <u>11,214,839</u> | <u>23,730,300</u> |

Board of Education -

Supt. & Secretariat

up quite early in the morning and repeat what she did on the previous day again. We have radio and newspapers at home, but mother and sister in-law can not enjoy with them except while they are sick in bed. I don't like such a joyless life."

I interferred: "Men are doing hard work, too."

- A. "I know men are doing hard work, but men are too provid of their hard work and scold women, but women never take a rest or even have a smoke even when they are entirely tired out."

They spoke in turns with confidence and sincere. I am thinking earnestly of social education for the youth in the farming villages.

Budget of 1949-50 and 1950-1

Kagawa F

| Items of Expenditure | Budget (1949-50) incl. suppl. | Budget (1950-1) no suppl. | Increase or decrease |
|------------------------------------|----------------------------------|------------------------------|-------------------------|
| Board of Education | ¥ 11,214,839 | ¥ 23,730,300 | ¥ 12,515,461 |
| Primary School | 263,111,832 | 324,410,398 | 61,295,566 |
| Lower Secondary School | 164,216,408 | 217,868,720 | 53,652,312 |
| Upper Secondary School | 87,898,872 | 106,440,352 | 18,541,480 |
| Part time U.S.S. | 35,803,311 | 48,252,634 | 12,449,323 |
| Blind & Deaf School | 0 | 6,619,635 | 6,619,635 |
| Correspondence | 0 | 703,518 | 703,518 |
| Kindergarten | 0 | 314,762 | 314,762 |
| Library | 4,941,200 | 4,523,208 | * 417,992 |
| Social Education | 6,211,321 | 7,600,000 | 1,388,679 |
| Physical Edu. | 2,240,600 | 4,809,200 | 2,568,600 |
| School Guidance | 3,026,000 | 4,800,000 | 1,774,000 |
| Research & Statistics | 664,000 | 800,000 | 136,000 |
| Information | | 500,000 | 500,000 |
| Construction & Repairs | 28,928,000 | 21,044,000 | * 7,884,000 |
| Miscellaneous | 188,896,885 | 37,082,800 | *151,814,085 |
| Preparation of Edu. Expenditure | 4,000,177 | 214,800 | * 3,785,377 |
| Total | 801,156,145 | 809,714,327 | 8,557,882 |
| Percentage | 32% | 32% | |
| Total Prefectural Budget | 2,487,225,234 | 2,515,995,474 | |

* decrease

Ehime-ken

小學校 學校經費調 No. 1

| 郡市 | 項目 | A. 一般 統 轄 費 | | | | B. 教 授 | |
|-------|----|--------------------------|--------------------------|-------------------------|-------------------------|---------------------------|---------------------------|
| | | 計 | 給支費 | 旅費 | 需費 | 計 | 給支費 |
| 温 泉 | | 5,654,961 | 4,472,083 | 307,022 | 873,856 | 47,179,437 | 40,271,876 |
| 越 島 | | 8,129,294 ⁵⁰ | 6,857,551 | 605,750 | 565,993 | 44,729,168 | 38,537,373 |
| 国 泉 | | 3,281,128 | 2,964,185 | 107,873 | 209,120 | 22,617,589 | 19,675,802 |
| 新 居 | | 2,900,105 | 2,569,882 | 135,138 | 195,085 | 18,551,555 | 16,663,322 |
| 宇 摩 | | 6,347,443 | 5,480,038 | 461,945 | 405,460 | 33,012,130 | 27,419,734 |
| 上 野 江 | | 3,514,569 | 2,997,273 | 183,805 | 333,491 | 15,374,230 | 13,079,027 |
| 伊 予 | | 3,762,174 | 3,307,164 | 110,019 | 345,011 | 28,789,039 | 24,897,912 |
| 花 乡 | | 5,725,854 | 5,019,301 | 234,301 | 472,252 | 32,663,175 | 27,639,518 |
| 西 甲 和 | | 5,233,832 ⁸³ | 4,309,214 ¹⁰ | 409,684 ³⁸ | 514,933 ⁹⁰ | 23,467,394 ¹⁴ | 18,108,005 ⁹² |
| 東 甲 和 | | 4,656,079 | 4,035,695 | 263,364 | 357,040 | 24,701,578 | 20,627,464 |
| 北 甲 和 | | 5,217,979 | 4,130,012 | 398,192 | 689,774 | 36,150,738 | 28,455,102 |
| 南 甲 和 | | 3,168,369 ⁷⁸ | 3,198,807 ⁹⁸ | 207,660 | 261,902 | 14,297,309 ³⁶ | 11,898,357 ³⁶ |
| 松 山 | | 4,122,906 | 3,174,615 | 994,914 | 853,377 | 49,696,216 | 41,935,971 |
| 今 治 | | 1,471,312 | 1,173,978 | 33,284 | 264,050 | 17,904,376 | 15,082,035 |
| 西 條 | | 1,490,640 | 1,276,087 | 35,870 | 178,683 | 14,437,873 | 12,733,831 |
| 新 居 浜 | | 1,270,504 | 906,438 | 19,600 | 344,466 | 13,982,242 | 11,341,424 |
| 八 幡 浜 | | 1,270,940 | 1,138,252 | 10,928 | 121,760 | 11,142,556 | 9,680,022 |
| 甲 和 島 | | 1,474,962 | 1,188,327 | 32,707 | 253,928 | 13,811,771 | 11,791,779 |
| 計 | | 69,093,093 ³⁶ | 58,198,854 ⁵⁹ | 3,654,056 ³⁸ | 7,240,182 ⁴⁰ | 462,208,395 ⁵⁶ | 389,858,480 ¹⁴ |

No. 1

(昭和三十四年一月間)

| No. | B. 教授費 | | | | C. 管理費 | | | | |
|-----|-----------|-------------|-------------|------------|------------|------------|------------|---------|------------|
| | 計 | 給支費 | 旅費 | 需要費 | 計 | 給支費 | 旅費 | 需要費 | |
| 22 | 873.856 | 47,179.437 | 40,271.876 | 1,253.767 | 5,653.799 | 2,561.054 | 1,129.121 | 4,000 | 1,427,933 |
| 50 | 565.993 | 44,729,168 | 38,537,373 | 1,667.860 | 4,723,934 | 3,475,343 | 1,991,864 | 10,700 | 1,472,579 |
| 3 | 209,120 | 22,617,589 | 19,675,802 | 486,179 | 2,455,608 | 1,457,395 | 642,784 | 2,515 | 812,196 |
| 8 | 195,085 | 18,551,555 | 16,663,322 | 620,327 | 1,267,904 | 2,389,498 | 1,802,339 | 1,000 | 586,159 |
| 5 | 405,460 | 33,012,130 | 27,419,734 | 1,403,856 | 4,188,540 | 2,647,918 | 1,314,315 | 42,200 | 1,271,403 |
| 5 | 333,491 | 15,374,230 | 13,097,027 | 474,716 | 1,800,287 | 1,722,666 | 968,449 | 6,853 | 749,364 |
| 9 | 345,011 | 28,787,039 | 24,897,912 | 680,806 | 3,210,421 | 2,227,349 | 1,162,999 | 1,200 | 1,063,357 |
| | 472,252 | 32,663,175 | 27,639,578 | 1,068,930 | 3,954,837 | 2,052,293 | 993,197 | 1,136 | 1,051,960 |
| | 514,733 | 23,467,394 | 18,108,005 | 1,218,508 | 4,140,890 | 2,459,729 | 1,190,637 | 19,800 | 1,251,292 |
| 1 | 357,040 | 24,701,578 | 20,627,464 | 941,278 | 2,632,836 | 2,670,423 | 1,852,826 | 1,100 | 816,477 |
| | 689,774 | 36,150,738 | 28,455,102 | 1,781,266 | 5,914,340 | 2,844,294 | 1,412,815 | 12,096 | 1,419,353 |
| | 261,902 | 14,297,307 | 11,898,357 | 687,908 | 1,707,440 | 883,037 | 585,454 | 5,000 | 292,585 |
| | 853,377 | 49,696,216 | 41,935,791 | 754,367 | 7,105,878 | 4,434,262 | 2,921,269 | 25,712 | 1,481,281 |
| | 264,050 | 17,904,376 | 15,082,035 | 325,862 | 2,476,479 | 1,703,856 | 1,290,484 | 2,800 | 410,572 |
| | 178,683 | 14,437,873 | 12,733,831 | 354,144 | 1,449,898 | 2,059,590 | 1,672,273 | 4,255 | 203,062 |
| | 344,466 | 13,982,242 | 11,341,424 | 472,903 | 2,161,915 | 2,356,199 | 1,268,850 | 21,115 | 1,066,234 |
| | 121,760 | 11,142,556 | 9,680,022 | 248,149 | 7,214,285 | 1,269,275 | 925,526 | 2,000 | 341,749 |
| | 253,728 | 13,811,771 | 11,791,777 | 316,714 | 1,703,078 | 1,343,700 | 913,364 | 0 | 430,336 |
| | 7,240,182 | 462,208,375 | 389,858,480 | 14,666,162 | 57,683,753 | 40,557,883 | 24,044,576 | 167,482 | 16,345,805 |