



燕几圖序

燕几圖者圖几之制也初几有六列等

惟三俱廣一尺七寸五分高二尺八寸

而其長者二各以廣之數而四之積而

為長七尺也其中者二各以廣之數而

三之積而為長五尺二寸五分也其小

者二各以廣之數而兩之則長三尺五

寸也以廣倍長而几之制以成縱橫離

欣賞編集

合變態無窮率視夫賓朋多寡枵盤豐
約以為廣狹之則遂創為二十體變為
四十名因體定名因名取義謂之骰子
卓蓋擬其六也燕衍之餘以之展經史
陳古玩無施而不宜寧不愈於世俗之
泥於小大一偏之用者乎圖成而未陽
宣君谷卿見而愛之欲肆其布置務廣
而方則不足於一隅乃增一小者合而

為七而其體始備其名益多余嘉其善
變而適於用也易名七星而併圖之名
曰燕几圖按圖設席類有雅致顧雖小
道亦見吾二人之智若出於一云
紹熙甲寅歲十二月丙午日雲林居士
黃長睿伯思序

卓大小凡七隻圖式如右

長卓一樣二隻

縱長七尺
橫廣二尺七寸五分脚高二尺二寸
可坐四人

中卓一樣二隻

縱長五尺二寸五分
橫廣并脚同前
可坐三人

小卓一樣三隻

縱長三尺五寸
橫廣并脚同前
可坐二人

戶部

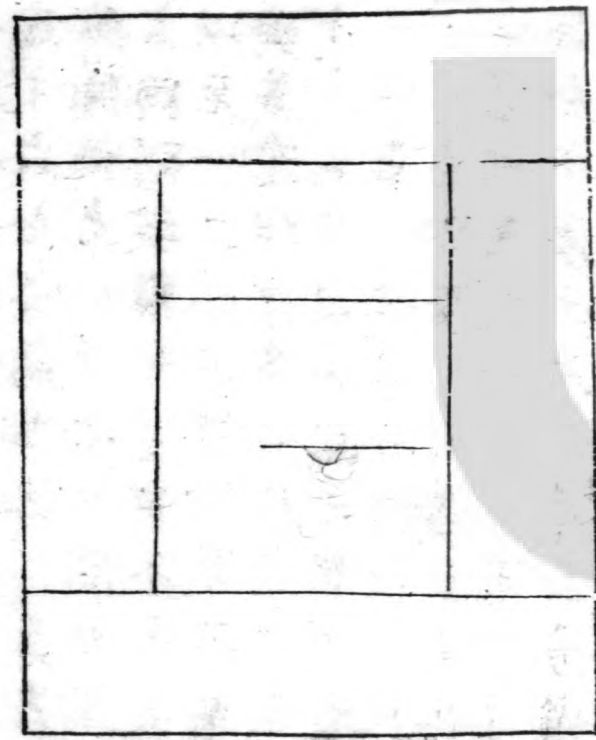
大

三

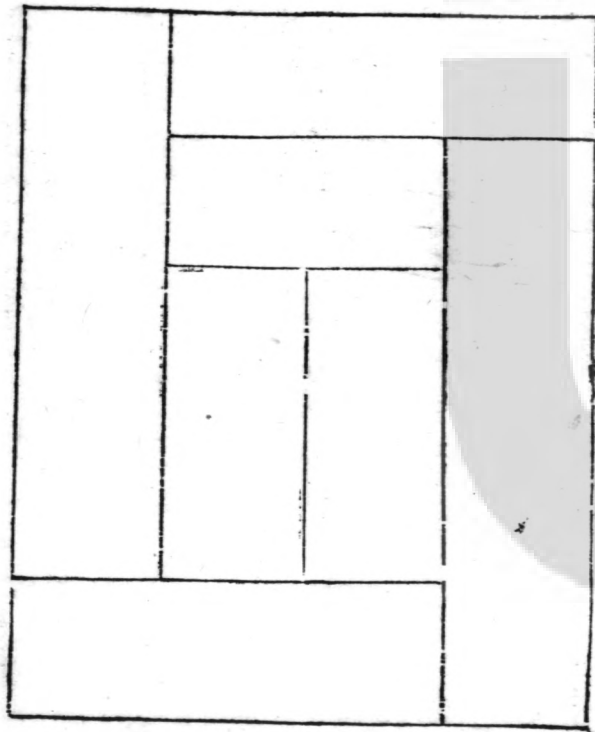
卓之橫數不宜大廣則倍數太長欲狹亦止
 於一尺七寸其長准此倍之卓脚以低小為
 雅其圖以五寸六七分為准俗工每泥已見
 為卓必放脚闊兩卓相並中即開縫須當歛
 下廣狹與上同則縱橫布置無不齊矣布卓
 或七或六以至一二今圖頗增多於舊以其
 長廣同者與其形侶者各為体尺二十有五
 体合為七十有六名其長廣之數謂如函二
 之体縱用一中卓二橫頭即共長八尺七寸
 五分橫用一長卓即廣七尺藏一之体縱用
 一長卓一中卓即共長一丈二尺二寸五分
 橫用三橫頭即共廣五尺二寸五分餘體大
 小皆倣此計之

一之體有三

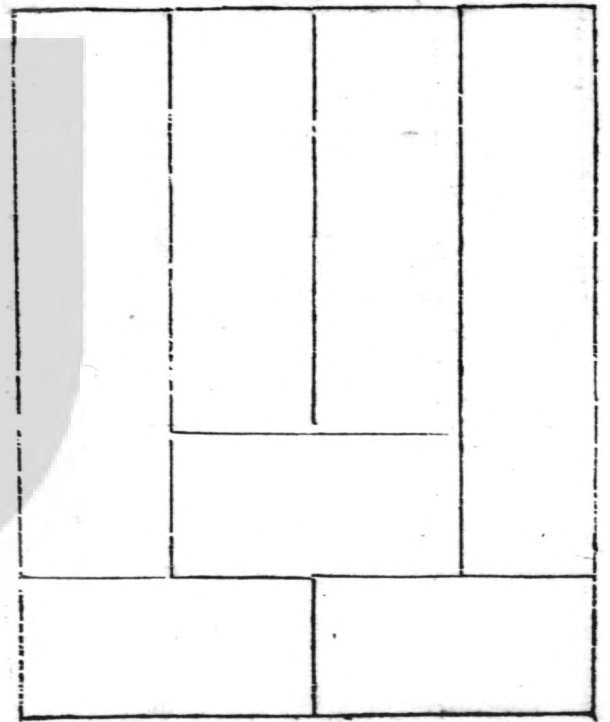
三 函



文回

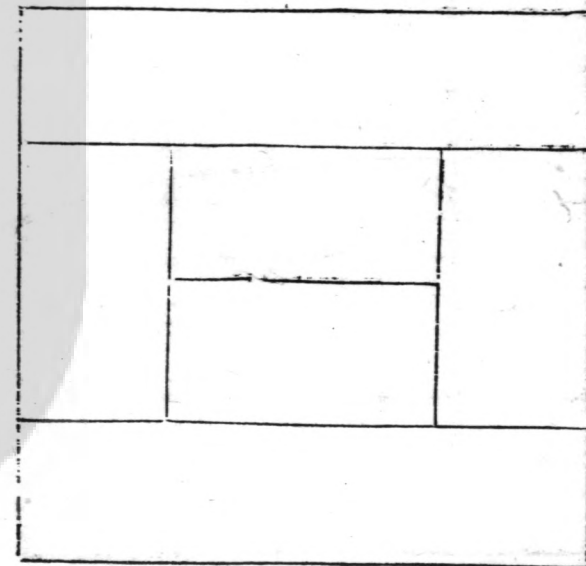


山屏



斤賞
二之體有四

矩 磬



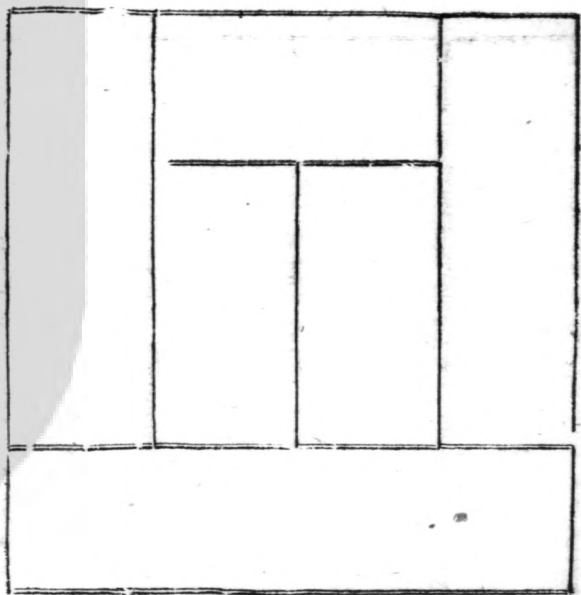
斯 士



次賞燕九

三

厨一

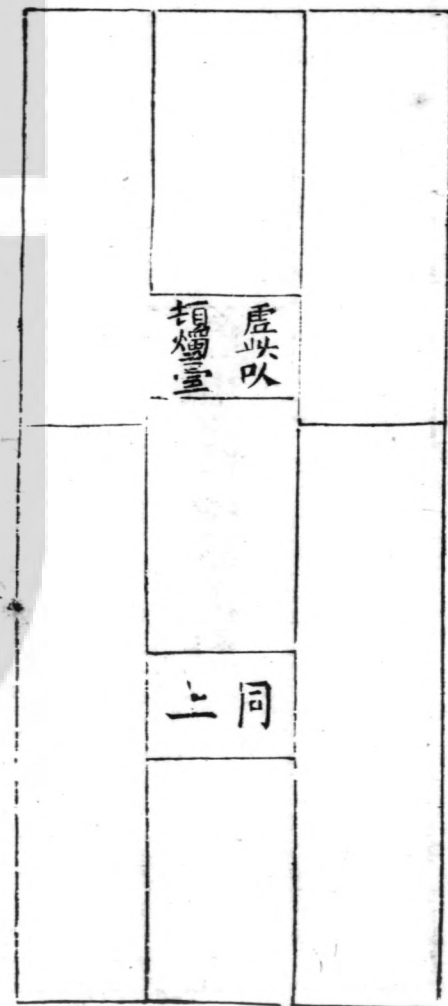


雲朶

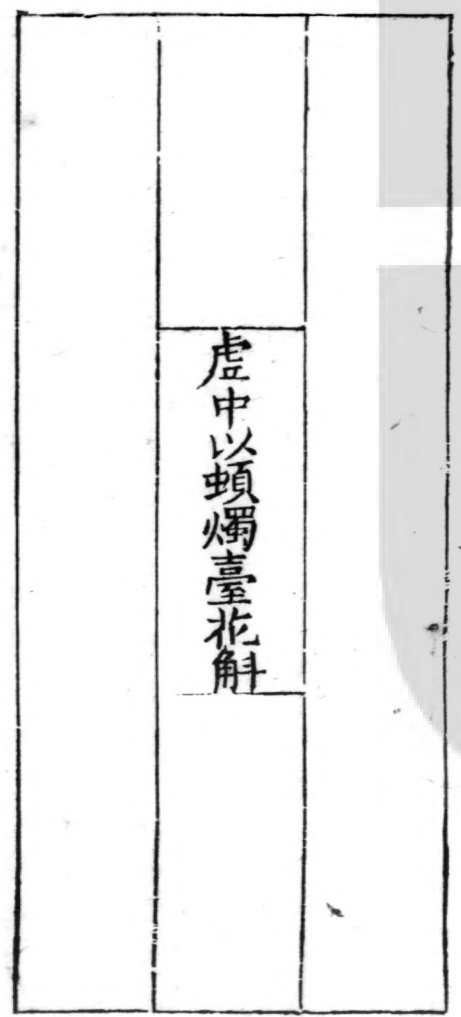


三之體有二

一 藏



中 虛

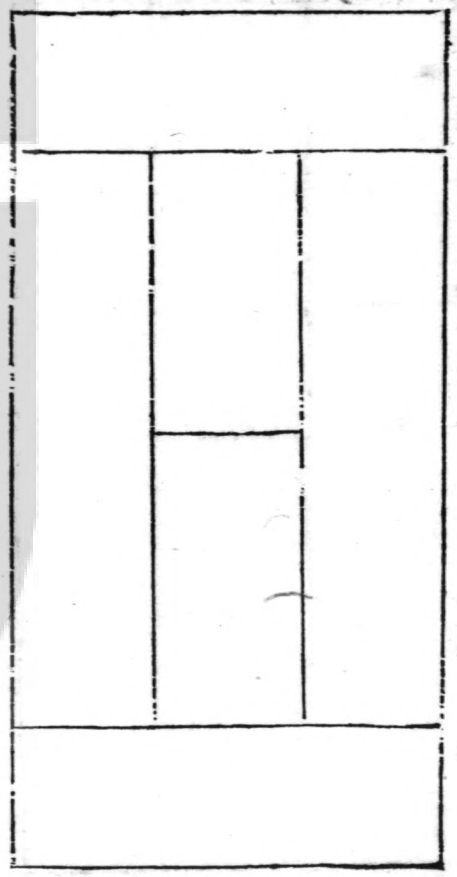


次賞燕九

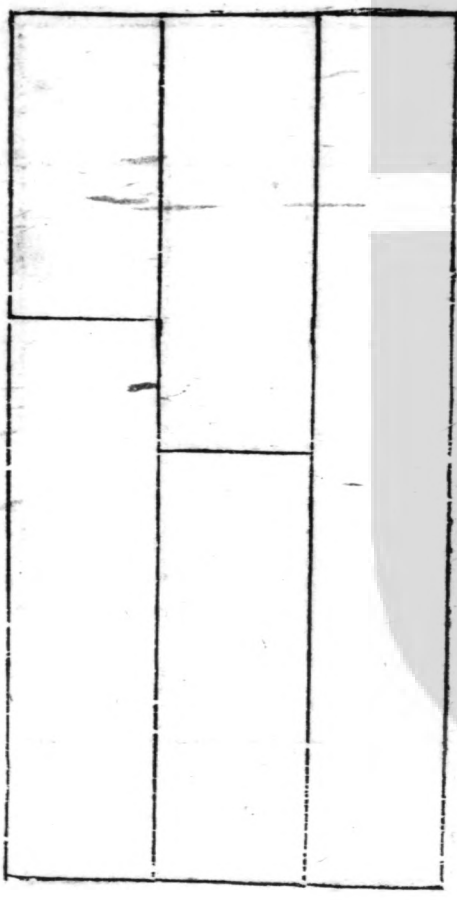
五

四之體有四

花六



交鎖



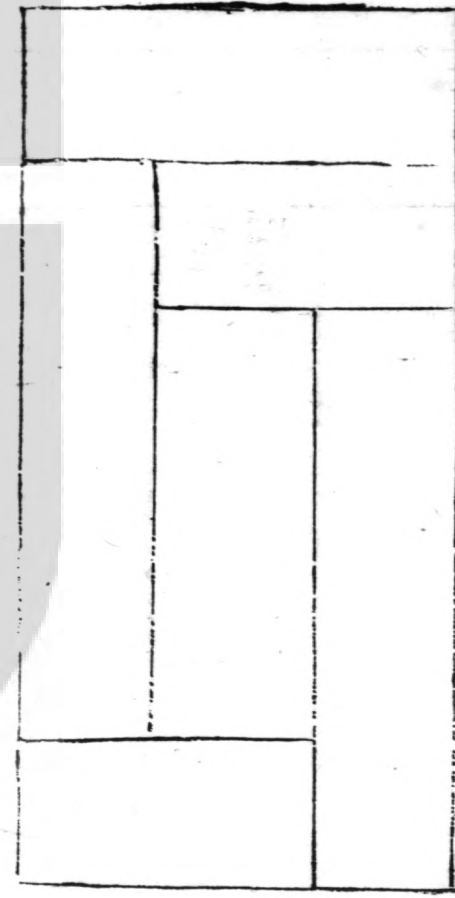
大

六

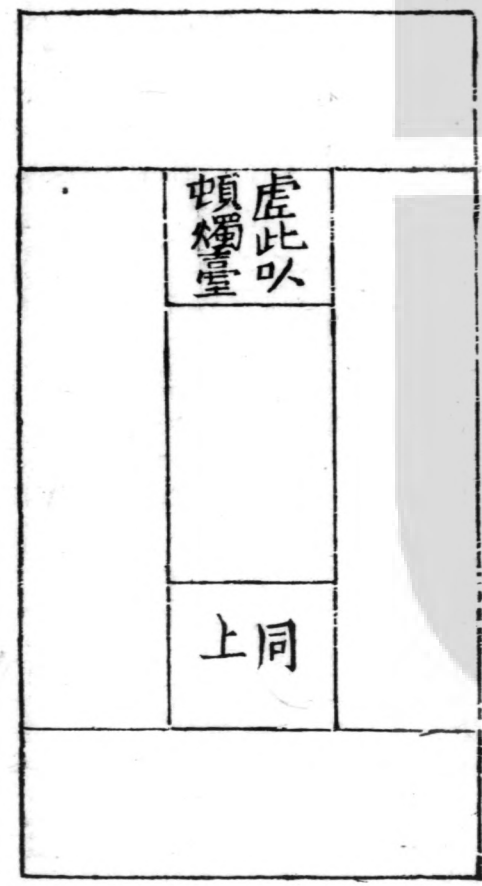
斤賞

五

一 卍



五 方

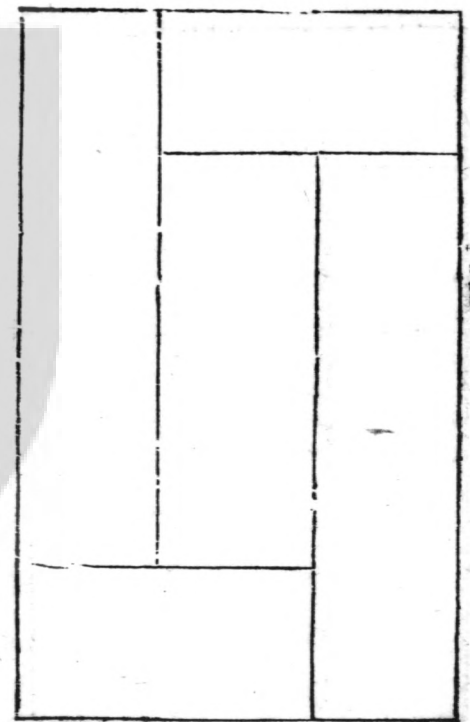


虛此以
頓燭臺

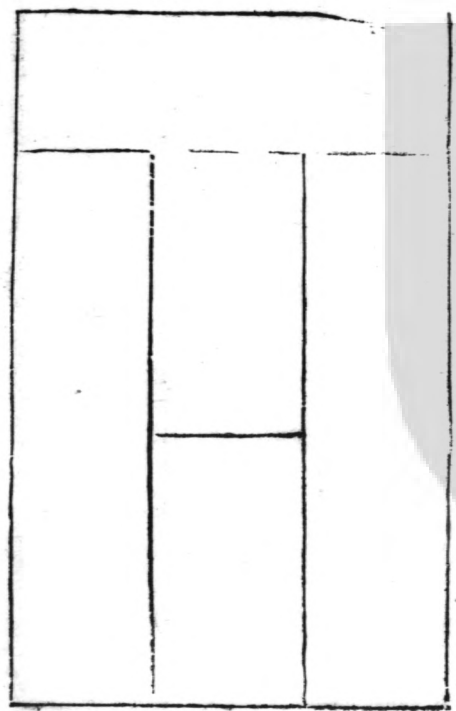
上同

五之體有二

字 卅



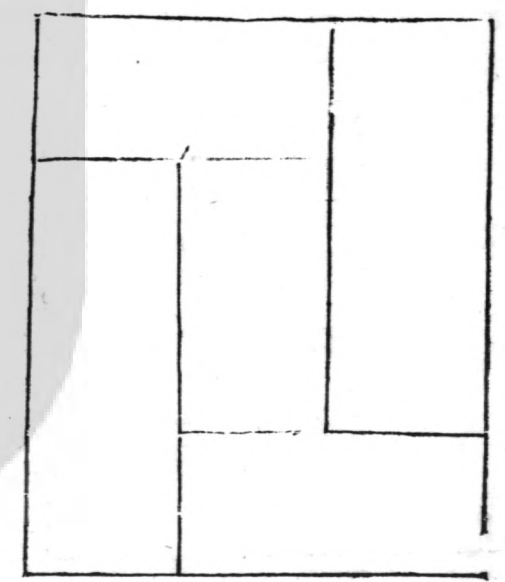
帘 懸



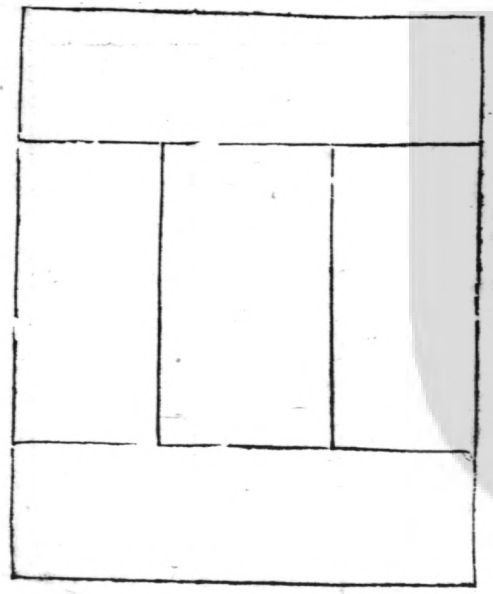
次頁九

六之體有四

小 正



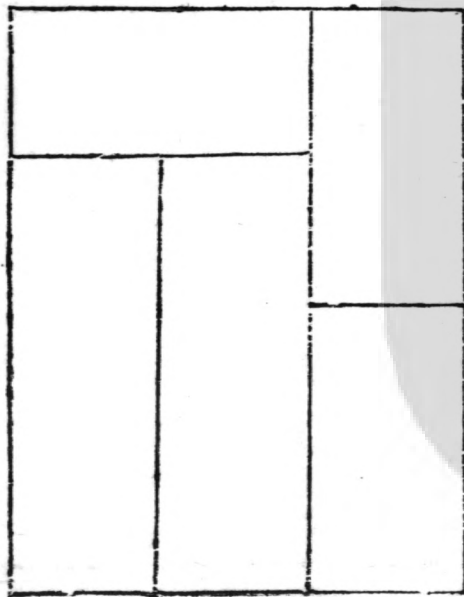
垂 箔



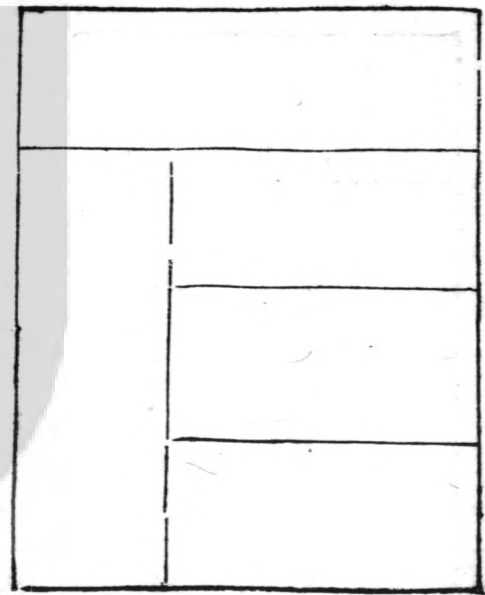
次賞燕九

九

布 箕

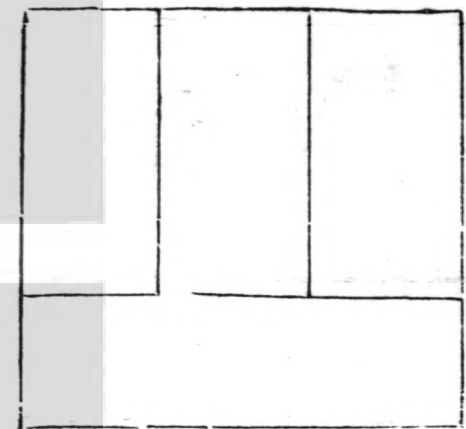


揚 旗

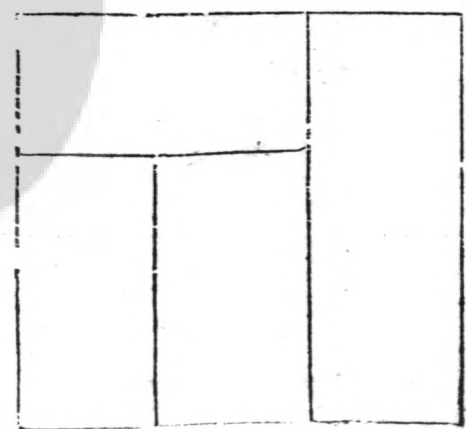


斤
七之體有二

巒排

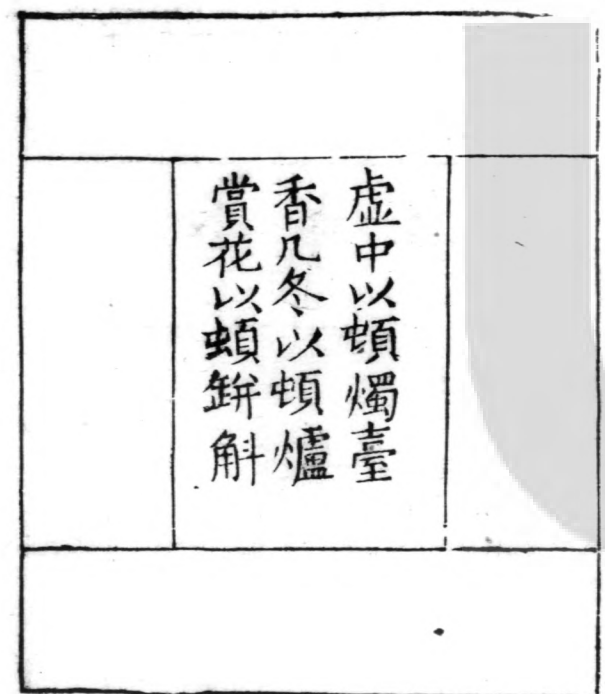


筭布小



八之體有三

池瑤

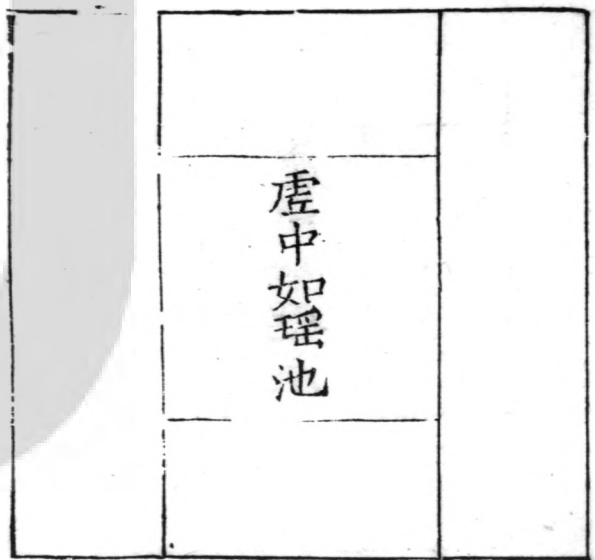


虛中以頓燭臺
香几冬以頓爐
賞花以頓鉗斛

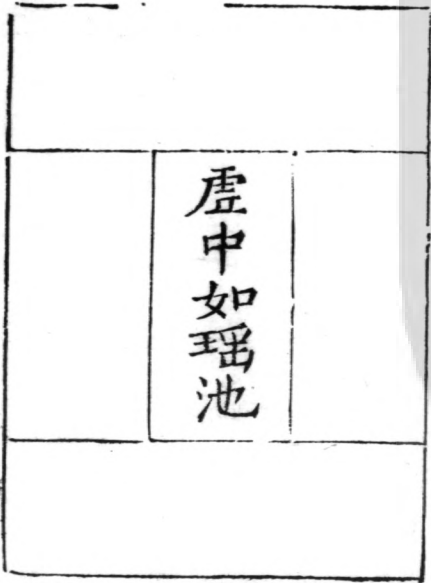
次賞燕几

二

井 金

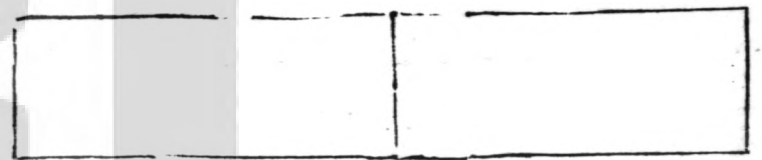


沼 玉

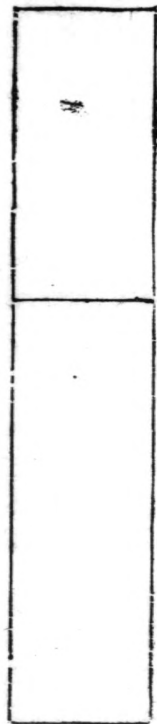
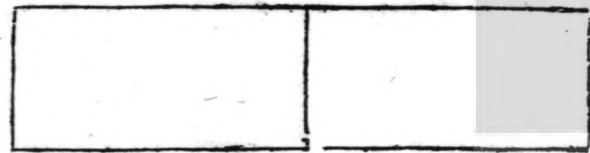


九之體有五

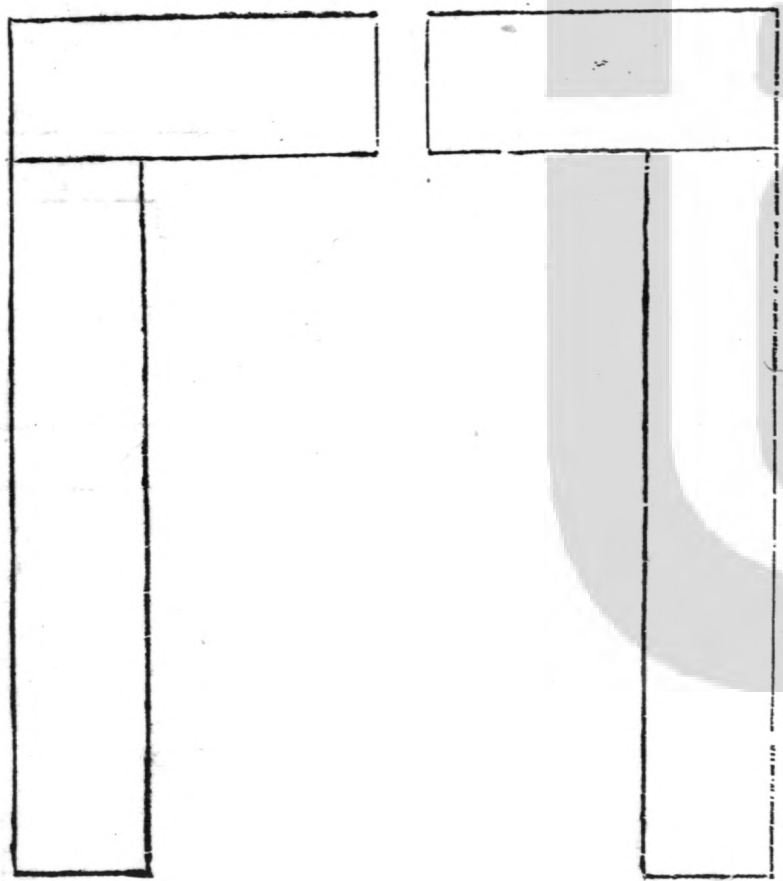
時鼎



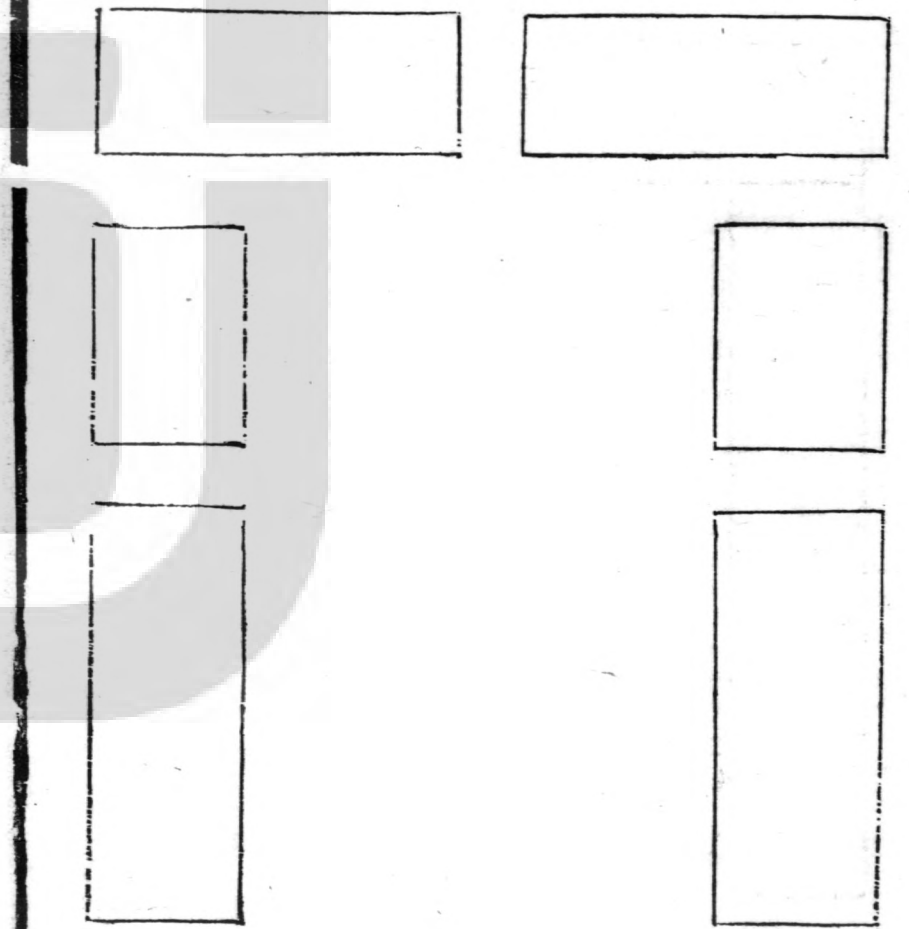
小鼎時



雙磬折



連衡折矩



次賞

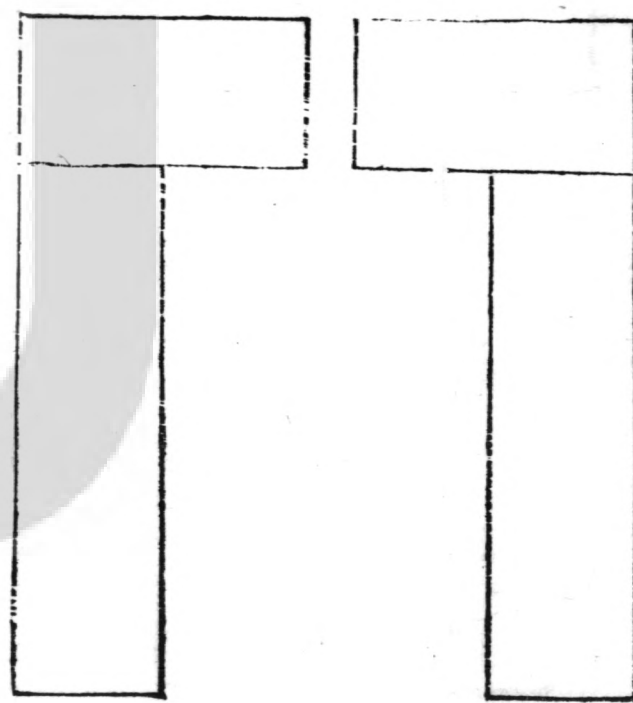
上

顧仁

斤賞

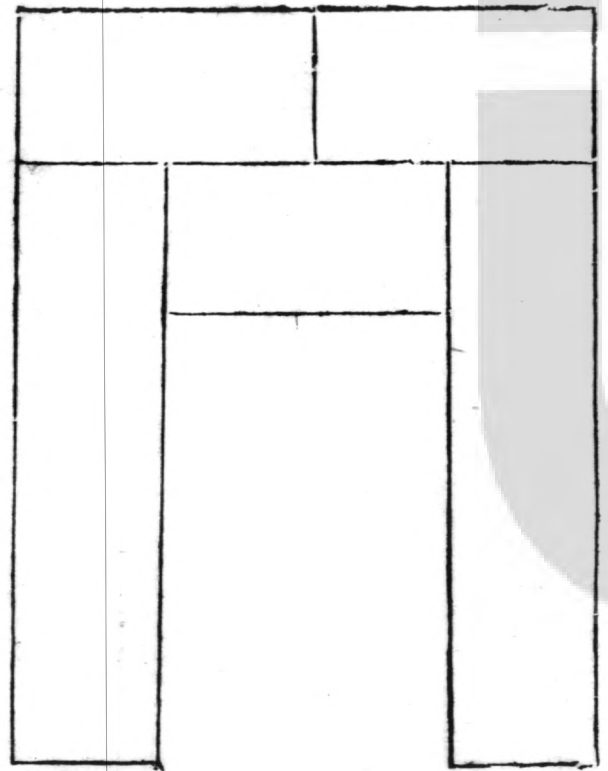
上

小雙磬



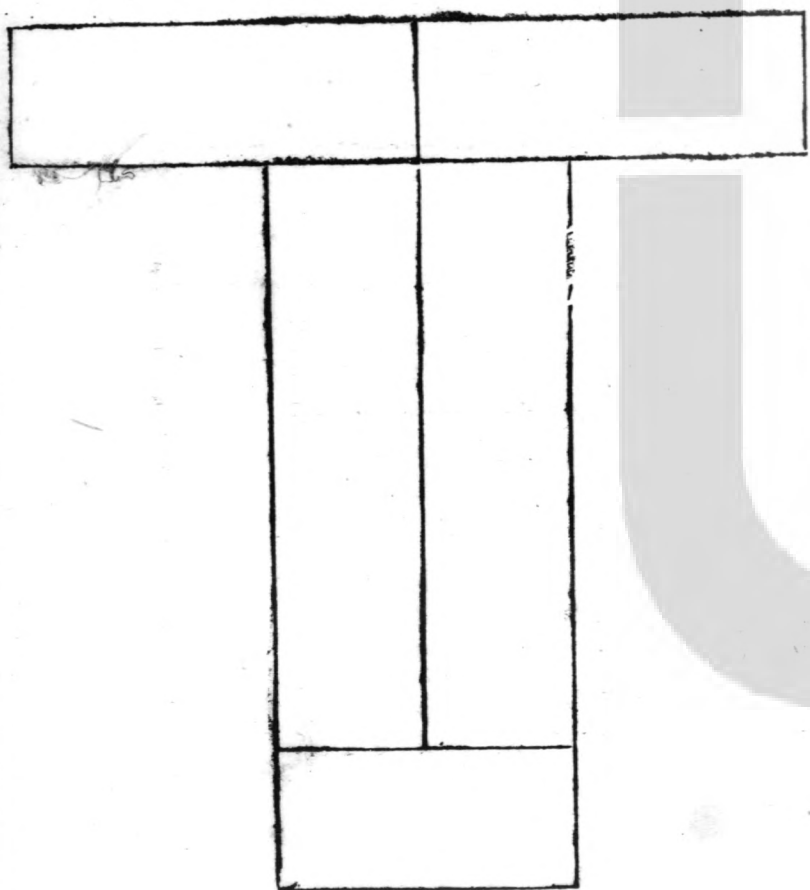
十之體有二

斗帳

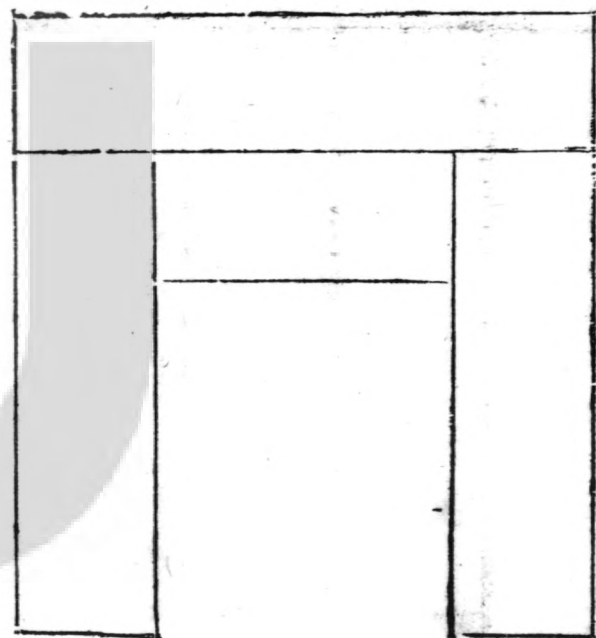


振衣

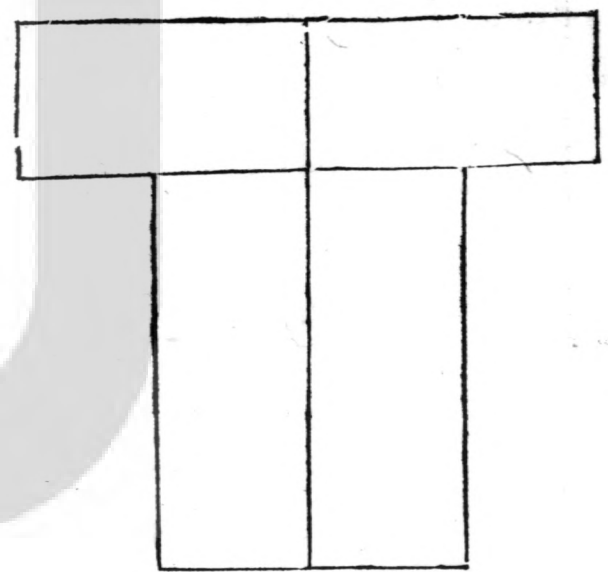
十二之體有二



球門

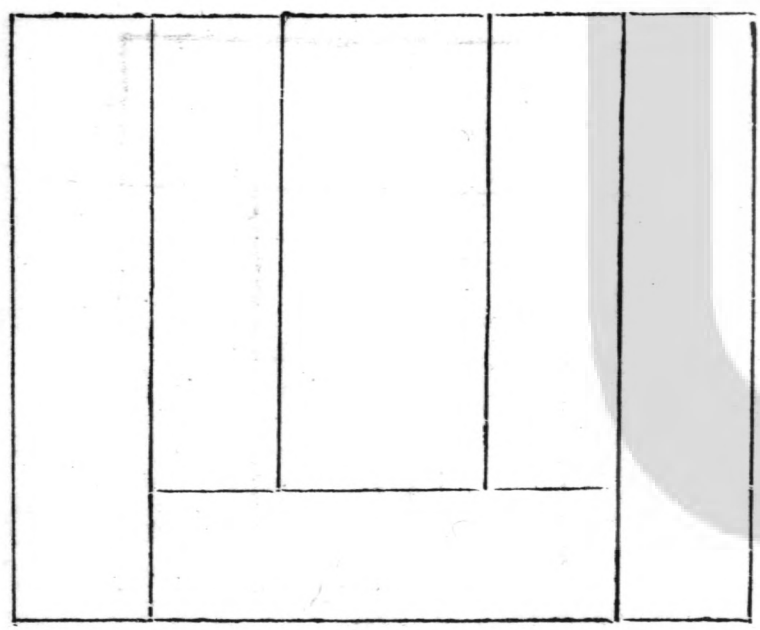


披 褐

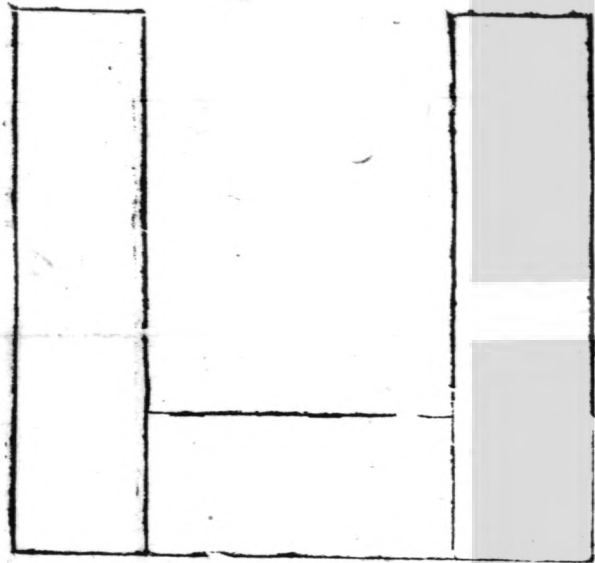


十二之體有七

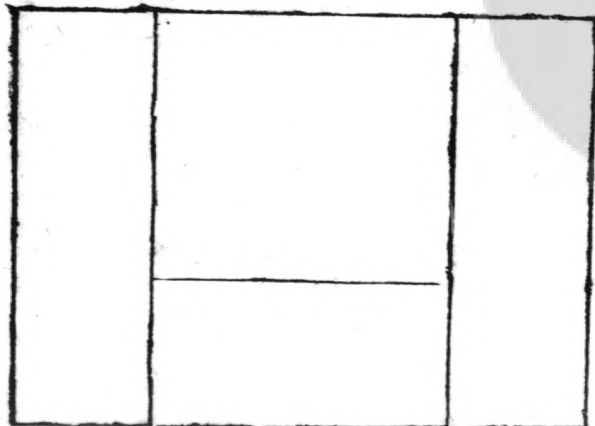
圭 邸



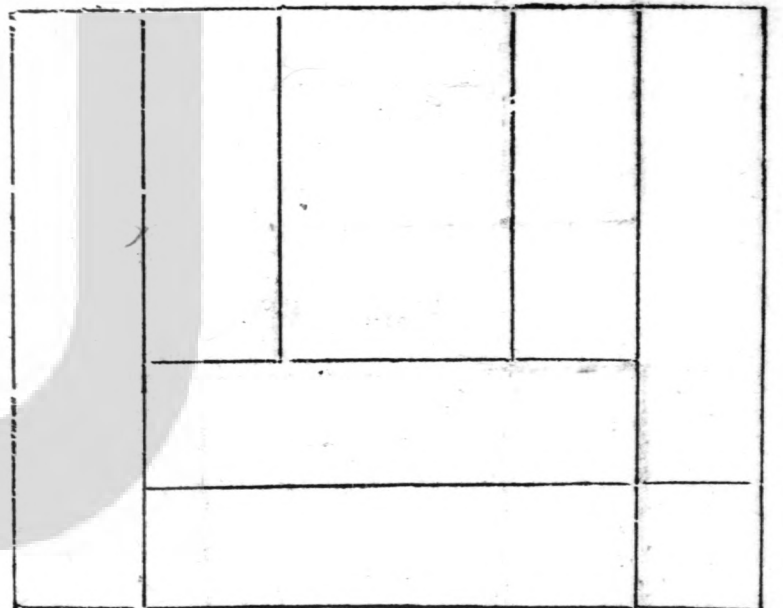
字 山



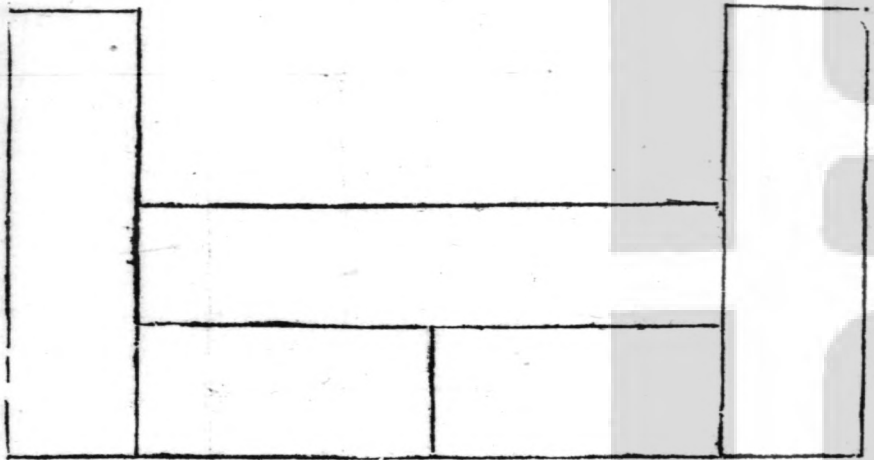
山 中



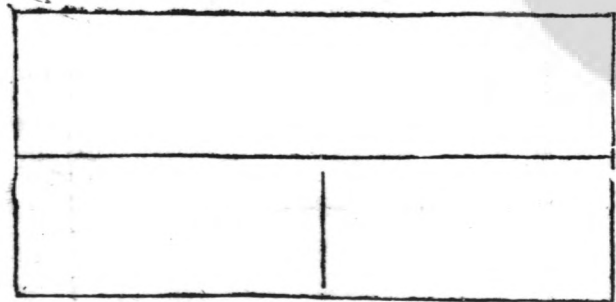
字 凹



石闌

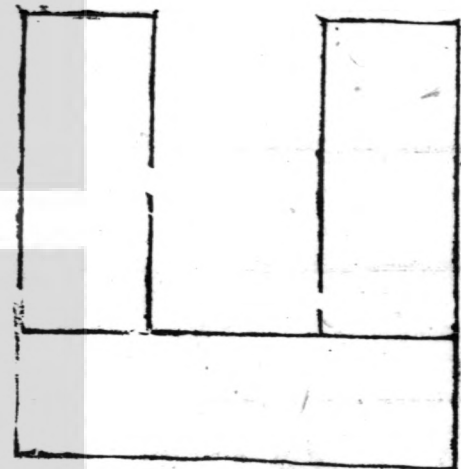


兩儀

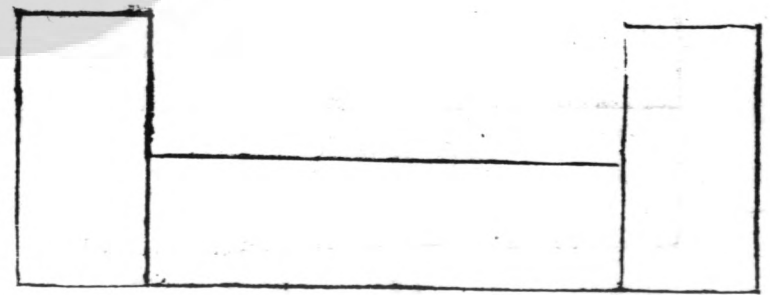


十三之體有一

小口

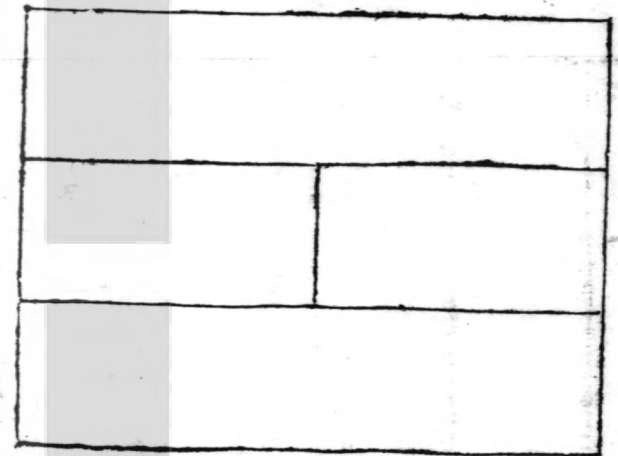


函石

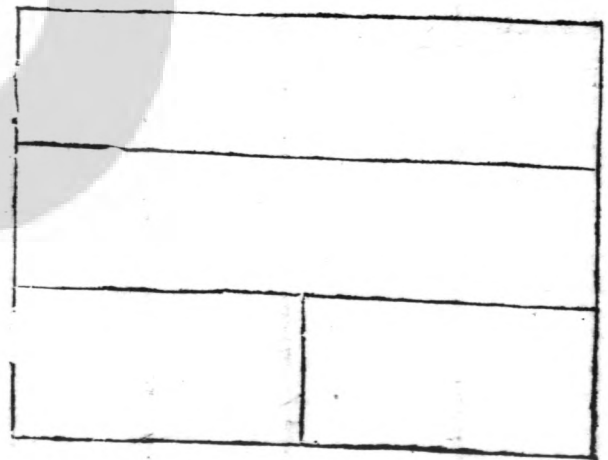


十四之體有二

離宮



吳戶



十五之體有二

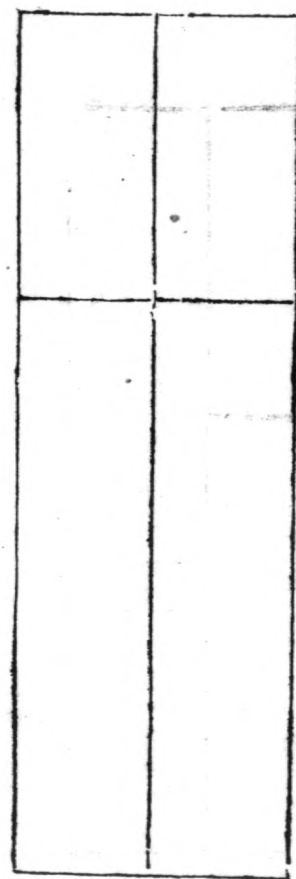
四直

羅紋

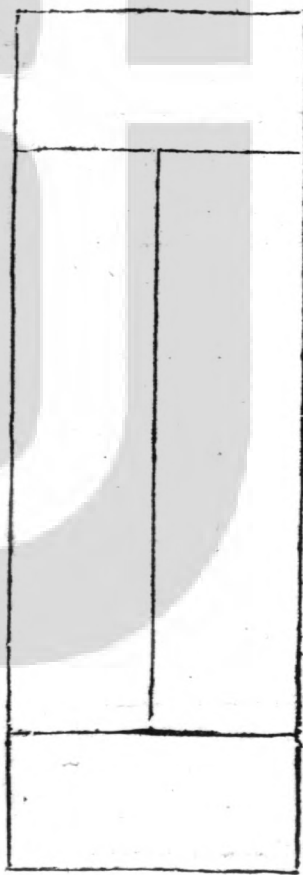


十六之體有二

小四直

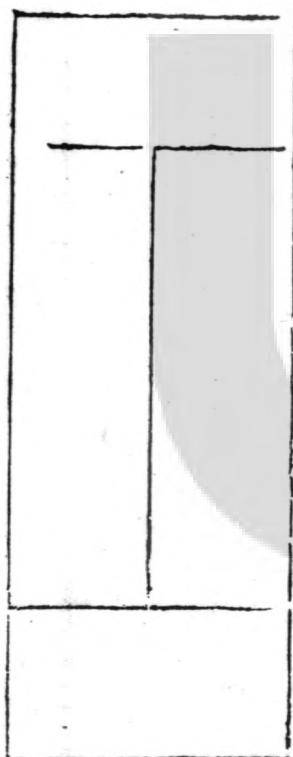


大雙關

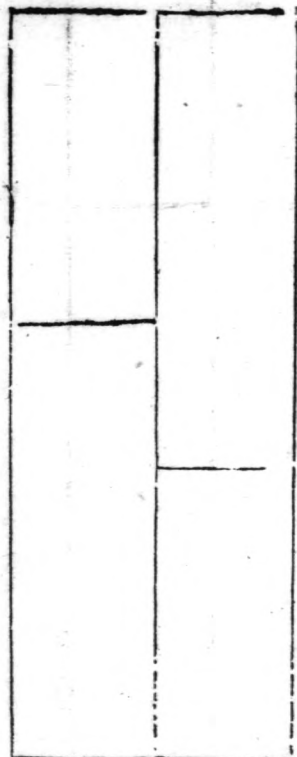


十七之體有三

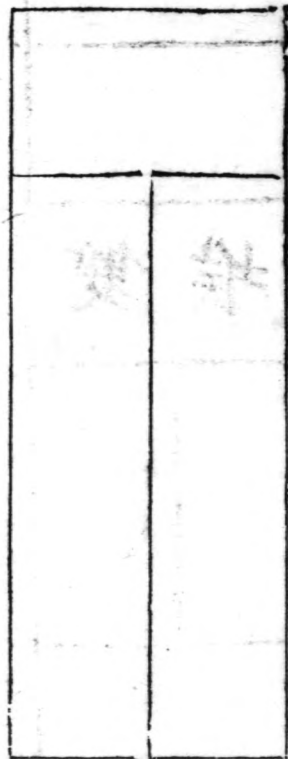
小雙關



大羅紋

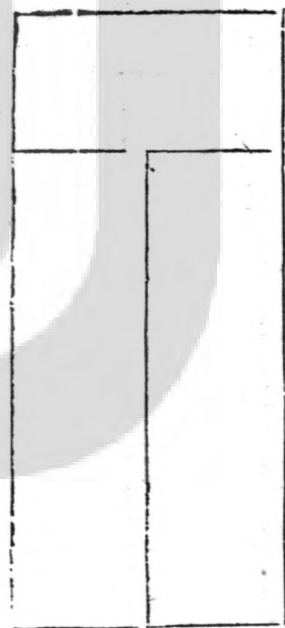


長釵股

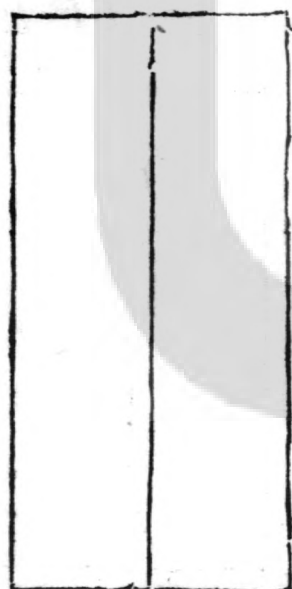


十八之體有二

短釵股

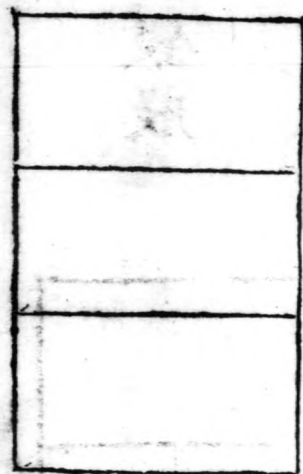


合符

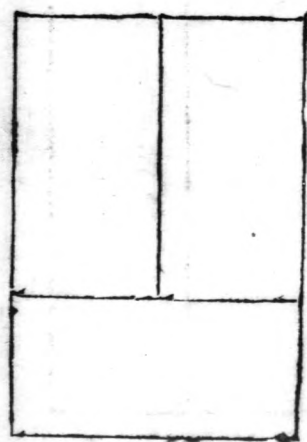


十九之體有三

乾畫



雙埃

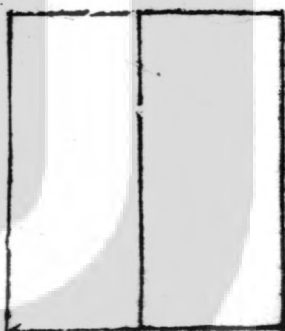


二十之體有一

儼方

雙魚

合



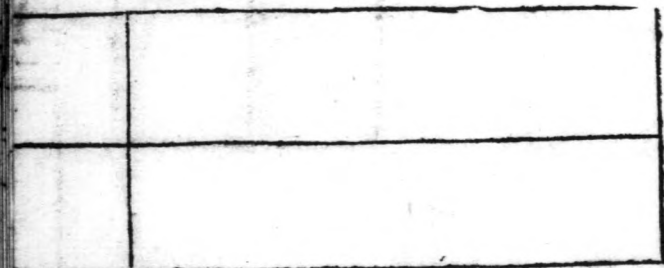
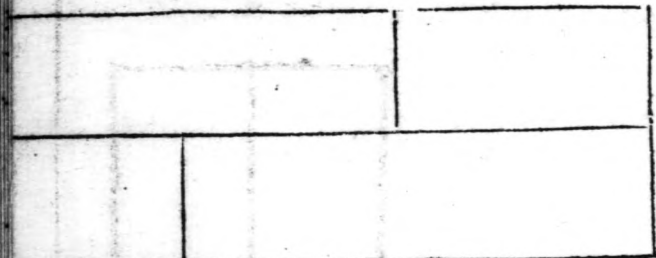
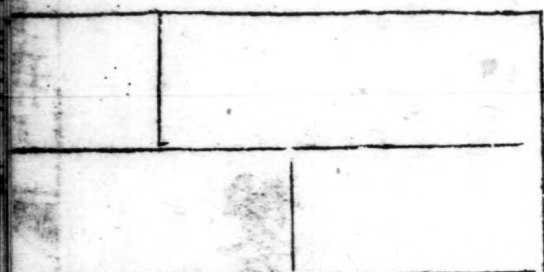
二十一之體有三

廿三

紋

合

雙



隔

束

夾

二十二之體有五

苗

梵

尺

竹

寶

金

玉

二十三之體有一廿五

四

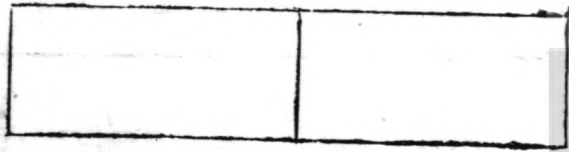
帛

四

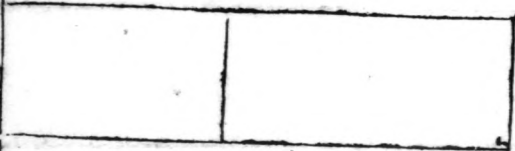
一始



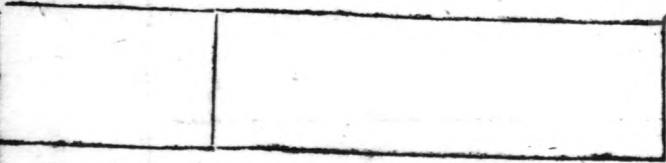
两象



驂

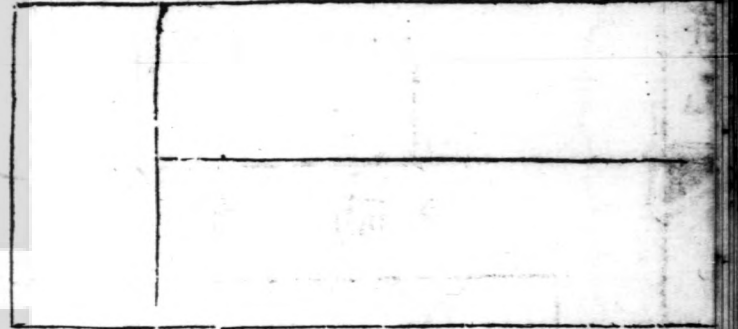


乘

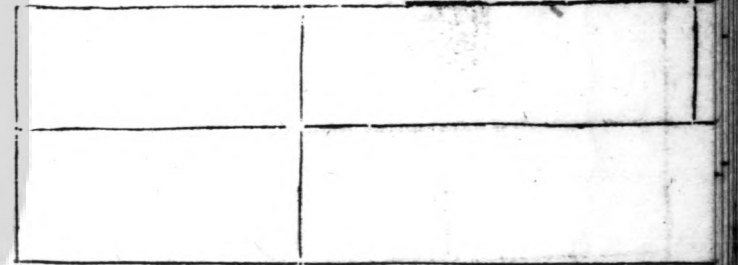


二十四之體有六

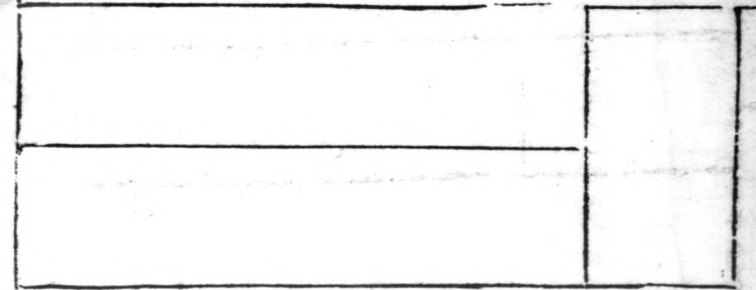
帶



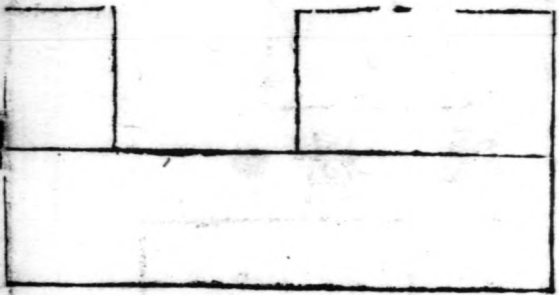
躡



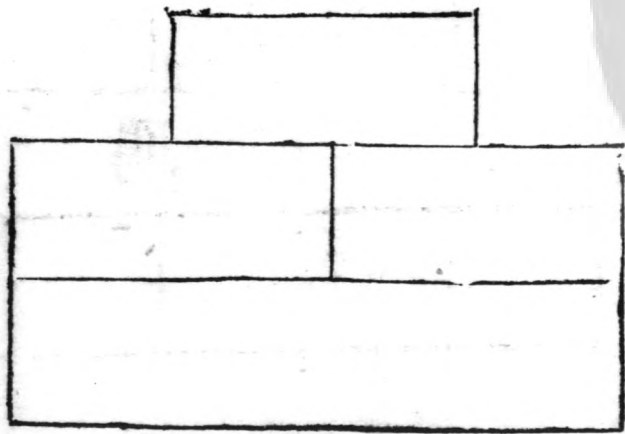
西



子



堞 雲

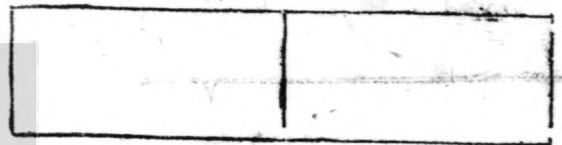


二十五之體有五

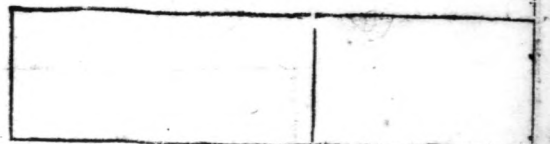
几 隱



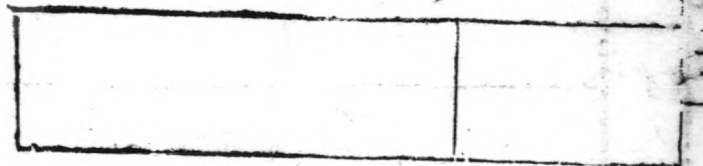
琴 橫



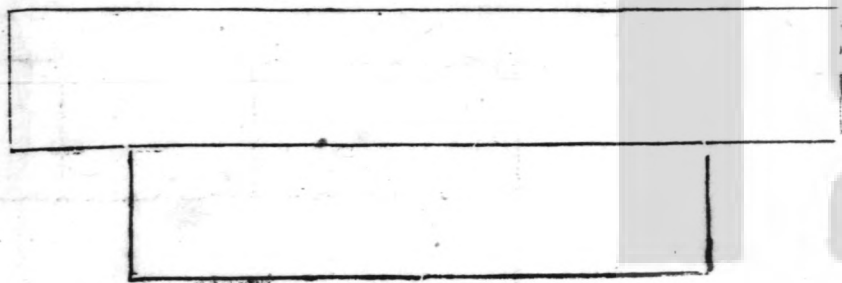
鸞



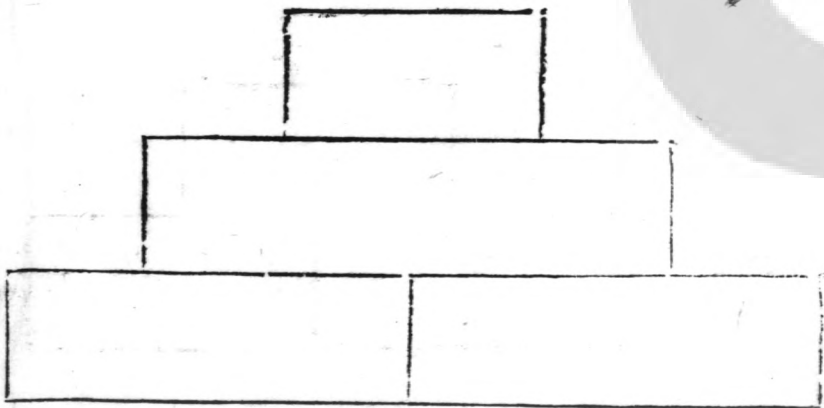
鴈



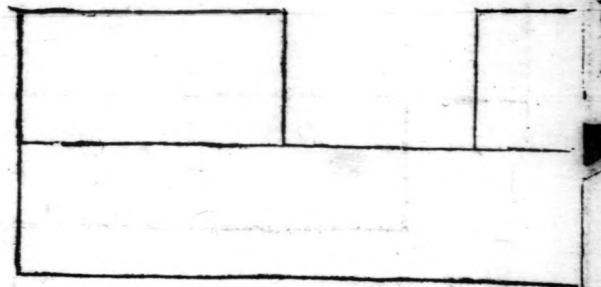
石 沐



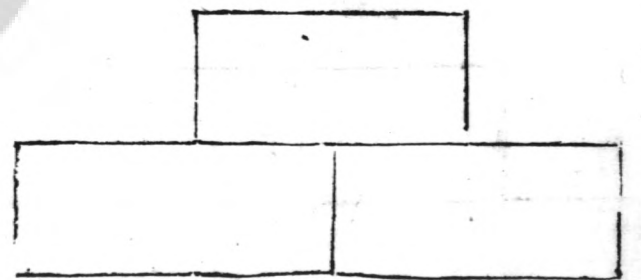
杏 壇



山



級 層



斥 賞 聖 凡

十 七

右雲林居士燕几圖式其几小大凡七
長短廣狹不齊設之必方或二或三或
四五或六七布置皆如法居士謂賓客
之多寡杯盤之豐約以為廣狹之則為
廿體變四十名又增廣七十有六燕几
之餘無施不可斯亦智巧之變也雖然
古人司几筵掌玉几授几有緝御古者
坐必設几所以依憑之具然非尊者不

之設皆所以示優寵之也其來古矣蓋
君子憑之以輔其德豈特為賓朋燕游
之設也其七乃陽穀也其變無窮不失
槩度此雖小道又有可觀居士亦智矣
圖得於沈君仲說姑錄之以傳好事者
丁亥四月慎獨痴叟陳植未方識
吾鄉王仲遠隱君洪武永樂間人平生
特喜繕寫書蓋雖文移案牘莫不抄之

故其家號多藏書者此燕几圖亦隱君
所鈔者也其子安吉丞敏道尚能保其
父之手澤迨近歲安吉之門人朱性甫
乃始獲其鈔本而吾友沈潤卿間取摹
之以刻于棗可謂博雅之一端也賞閱
之士寧不敬羨矣乎弘治甲子歲陽月
望浚五日葑門邢參題于羨方書舍

刻古局象棋圖叙

欣賞編辛集

王子曰此古局象棋圖法蓋司馬溫
公倣象戲而損益之者也則何以取
戰國當是時襄周君惴々守其蝸角
之地不敢出步武而七雄碁置從衡
無端倪即機詐所自出也迨夫周鼎
既遷秦庶亦失則機詐亦時而窮矣

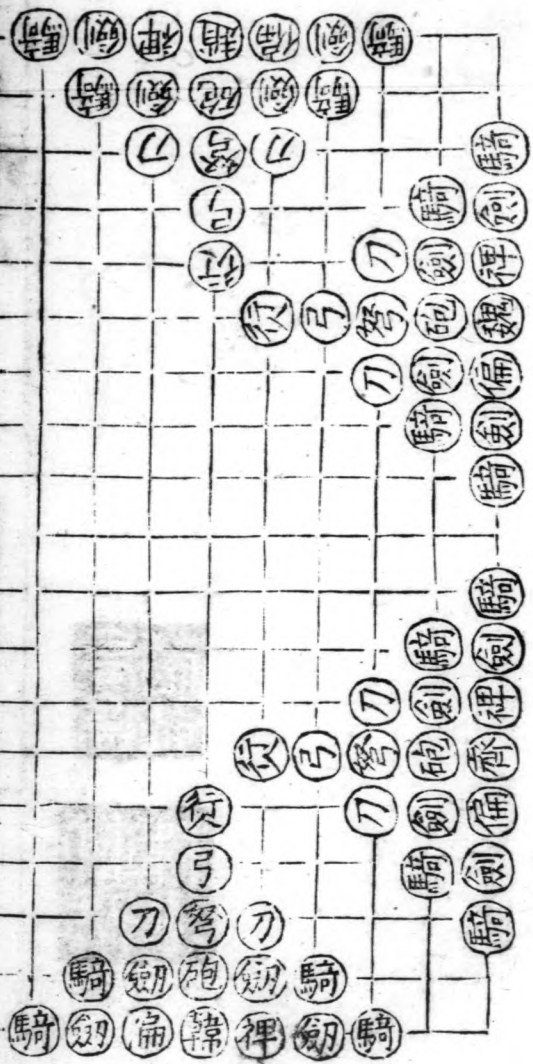
今觀其將與偏裨之進退行人之往來與夫騎砲弓弩刀劍之湊合則七國之戰爭幾十年不足以當奕者之一咲然竊念士生其間不鼓簧舌而運鬼謀則駘而之鋒鏑已耳亦大不幸哉方今海內合而為一延頸之寇無敢越局天下智術之士幾積于無

用而謀所以娛心志供杯酒者惟博奕是資一何媮媮也則茅康伯之表茲圖時乎時哉雖然語有之天下雖安忘戰必危之戲也即以之習戰亦可也若徒曰為之猶賢乎已則又非温公與康伯意云

萬曆庚辰七夕東海王逸民叙

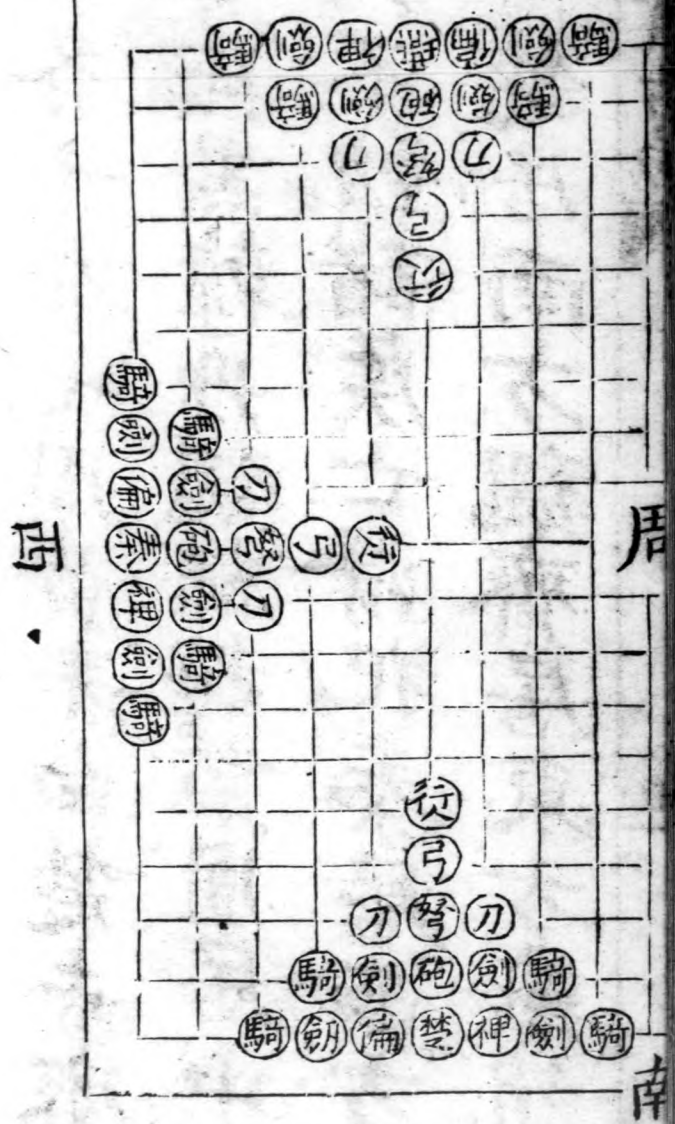
鳳鳴如川來此

東



高鼎酒

林秀



古局三

古局象碁圖

七國象戲用百有二十周一七
 國各十有七周黃秦白楚赤齊
 青燕黑韓丹魏綠趙紫周居中
 央不動諸侯亡得犯秦居西方
 韓楚居南方魏齊居東方燕趙

居北方七國各有將直斜行一

偏遠近無一裨名象戲而無象

及車者車即將及偏裨所一行

乘象不可用於中國故也一行

人直斜行無遠近不能一砲直

無遠近前隔一基乃可擊物前擊

無所隔及隔兩基以上則不可一弩

擊一弩五直斜行二

刀斜行四路四劔直路四騎曲行四

一斜三凡欲戲者所得之國則相

之在坐七人則各相一國六人

則秦與一國連衡五人則楚與

一國合從四人則齊與一國合

從三人則秦與二國連衡或但

今在坐之人各占一國而空其
餘國其所與之國惟相所擇遂
并相之先誓之曰所相之國亡
得妄代之謀及告以難犯者先
罰酒秦楚韓齊魏趙燕以次移
棊棊已離故處亡得復還及悞

移棊者皆有罰若擊與國則盡
撤去與國之棊凡能擒敵將者
勝雖未擒獲一國吏士過十者
勝波所獲吏士雖未滿古而此
亡吏士已過十者負于時坐上
獲最多者勝勝者飲負者既飲

歛棊出局有擒二將或獲諸吏
士滿三十者霸霸則諸國皆服
遍飲在坐而罷一騎當弓弩刀
劍之二砲當三裨當四偏當五
右司馬溫公所述周黃居中

尊天子也無吏士不侵伐也
諸國異色各因其方也行人
猶說客泛衡於其間也餘各
有制度噫將以智為本七國
環列于一盤之上以七人遞
相攻擊或勝或負其智不智

可知矣蓋前指立意懼人無
所用心未嘗不倦倦於書史
之間或文字飲則奕之因以
考古制也語云不有博奕者
乎為之猶賢乎已願正居士
裴子喜樂與賢士大夫遊因

得是本遂刻梓以廣其傳時
開禧丙寅上元日刊于書窟

古局象碁圖終

博奕喪志前哲嘗論戒之此圖如俳
中之諷差有可取然以七國之事當
奕者一咲觀者不能喪慨焉潤卿偶
獲此本愛而刻之命題其歲月于後
正德辛未上巳日東海徐禎卿昌穀
書于紫芝室



