

QK
201
H 89

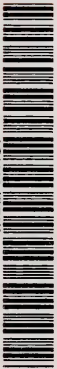
CATALOGUE OF CANADIAN PLANTS

By The Rev. Prof. Hubbert, M.A., Ph.D.

1320

CATALOGUE

MBL/WHOI

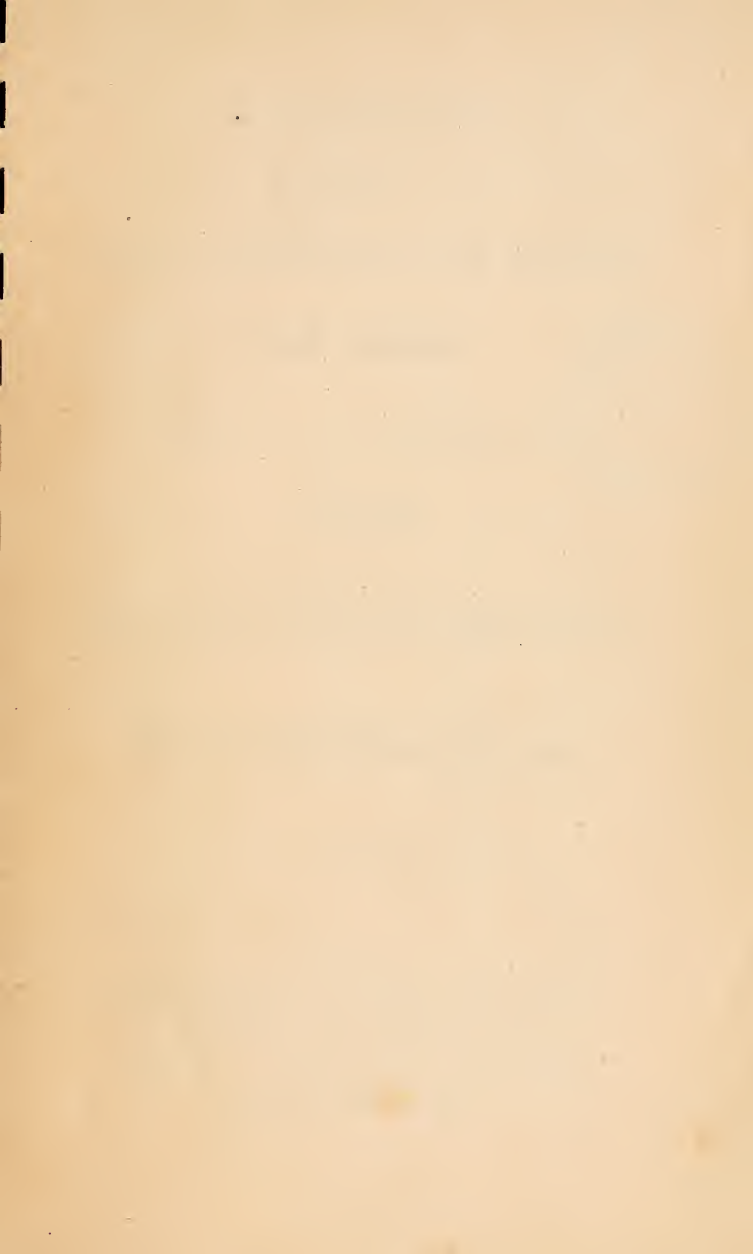


0 0301 0013536 4

OF

CANADIAN PLANTS.

126.18
984
81.971





58117
H 26

CATALOGUE
OF THE
FLOWERING PLANTS
AND FERNS

INDIGENOUS TO, OR NATURALIZED IN,
Canada.



TO
FACILITATE THE EXCHANGING OF SPECIMENS, ETC.

BY
THE REV. PROF. HUBBERT, M.A., PH.D.

MONTREAL :
DAWSON BROTHERS, No. 23 GREAT St. JAMES STREET
G. MERCER ADAM, 61 KING STREET EAST, TORONTO.

PRINTED BY J. C. BECKET, 84 GREAT ST. JAMES STREET.

. PRICE FIFTEEN CENTS.



PREFACE.

THOUGH no apology is necessary for an attempt at a systematic enumeration of our plants, the compiler desires briefly to state the motives that led him to undertake the work.

HAVING been for some time engaged in the preparation of a CANADIAN FLORA, on the plan of De Candolle's "Flore Française," he of course felt anxious to embody in it, not only the result of the researches of our earlier Botanists, like Pursh, Michaux, Hooker, &c., but also the scattered knowledge stored away in the herbariums and note-books of a large number of careful, conscientious investigators, who, by working up the Botany of their own localities, are adding year by year to our knowledge of the subject. Resolved before finally correcting the manuscript for the press, to make an appeal to the Students of Canadian Botany for any additional facts regarding the distribution and variation of species, influence of latitude and altitude, local causes, &c.: the question next arose in what way this could best be done. The plan of a numbered Catalogue was fixed upon, with the hope that while it rendered the transmission of information about the species occurring in any locality easy, it would also prove useful to amateur Botanists, by limiting the number of names among which they would require to search, in determining specimens; and to persons forming herbariums, by aiding them in effecting exchanges.

The author earnestly solicits any information that will assist in securing accuracy in the "Flora". He will gladly examine, name, and return at his own expense, plants sent to him from any part of Canada; and so far as the nature of the work will allow, all assistance received will be carefully acknowledged. In the Catalogue, the nomenclature of Professor Gray has been adopted as that best known. This has been the case even where a somewhat different arrangement would have been employed in a larger work.

Accuracy in a list like this is a more important consideration than the grouping of species and a great deal of pains has been taken to secure it.

The writings of Pursh, Michaux, Hooker, Gray, Torrey, Provencher, Brunet, and others have been consulted; the lists published in the Canadian Journal and Naturalist, Annals of the Botanical Society of Canada, American Journal

of Science, Proceedings of the Boston Natural History Society, Edinburgh New Philosophical Journal, Report of the Canadian Geological Survey, etc, along with those furnished by a large number of correspondents compared; and in nearly every case of doubt, the result checked by the examination of specimens. Valuable assistance has been given in the true unselfish spirit of science by the Rev. Prof. Hincks, D. A. P. Watt, Esq., W. Macoun, Esq., and others. Absolute reliability however is scarcely attainable at once, where there has been so much guessing at truth in some of the local reports, and by the kind permission of the Editors of the Canadian Journal and Canadian Naturalist, an occasional annotated supplemental list may be published in those magazines, and notice given of species rejected on a better acquaintance with their range.

There are two classes of plants to be disposed of in addition to those which may certainly and properly be termed Canadian. A plant is sometimes cited as having been met with in some spot where no subsequent explorer has ever succeeded in finding it. Has this arisen from a mistake on the part of the botanist? Or has the plant been driven from its home, by the march of cultivation, draining, and other changes? Circumstances cannot always determine. In many cases we can say positively that the authority is so good as to warrant us in admitting the species. Generally however such plants must be held for the present as doubtful. These, with a few border species growing in such positions as to render their occurrence in Canada almost certain, have been gathered into a separate group on page 27. They should be specially looked for along the United States frontier. Finally, a second separate list contains those occasional stragglers, which are found sparingly escaped from gardens, and maintaining a precarious existence; usually disappearing after two or three years.

The Pamphlet was originally intended only for gratuitous distribution: but it has been thought better to put a few copies into the hands of the Booksellers, as in some cases this will render it more easily accessible.

ST. FRANCIS COLLEGE,

January 13, 1867.

CATALOGUE.

RANUNCULACEÆ.

ATRAGENE

1. Americana, Sims.

CLEMATIS

2. cylindrica, Sims.
3. Virginiana, L.

ANEMONE

4. parviflora, Michx.
5. multifida, DC.
6. cylindrica, Gray.
7. Virginiana, L.
8. Pennsylvanica, L.
9. nemorosa, L.
10. narcissiflora, L.

HEPATICA

11. triloba, Chaix.
12. acutiloba, DC.

THALICTRUM

13. anemonoides, Michx.
14. dioicum, L.
15. Cornuti, L.
16. alpinum, L.

RANUNCULUS

17. aquatilis, L., *vars.* a. *divaricatus*, Gray and b. *tricophyllus*, Chaix.
18. Purshii, Richards.
19. Flammula, L.
20. reptans, L.
21. pusillus, Poir.
22. Cymbalaria, Pursh.
23. rhomboideus, Goldie.
24. cardiophyllum, Hook.
25. affinis, R. Br.
26. abortivus, L.
 - b. micranthus.
27. brevicaulis, Hook.
28. sceleratus, L.
29. recurvatus, Poir.
30. Pennsylvanicus, L.
31. fascicularis, Muhl.
32. repens, L.
33. *bulbosus*, L.
34. *acris*, L.

CALTHA

35. palustris, L.
36. natans, Pali.

TROLLIUS

37. Americanus, DC.

COPTIS

38. trifolia, Salisb.

AQUILEGIA

39. Canadensis, L.
40. vulgaris, L.

DELPHINIUM

41. exaltatum, Ait.

HYDRASTIS

42. Canadensis, L.

ACTÆA

43. spicata, L., *vars.* a. *rubra*, and b. *alba*, Michx.

CIMICIFUGA

44. racemosa, Ell.

MAGNOLIACEÆ.

LIRIODENDRON

45. Tulipifera, L.

MENISPERMACEÆ.

MENISPERMUM

46. Canadense, L.

BERBERIDACEÆ.

CAULOPHYLLUM

47. thalictroides, Michx.

JEFFERSONIA

48. diphylla, Pers.

PODOPHYLLUM

49. peltatum, L.

CABOMBACEÆ.

BRASENIA

50. peltata, Pursh.

NYMPHÆACEÆ.

NYMPHÆA

51. odorata, Ait.

NUPHAR

52. advena, Ait.
53. Kalmiana, Pursh.

SARRACENIACEÆ.

SARRACENIA

- 54.
- purpurea*
- , L.

PAPAVERACEÆ.

PAPAVÉR

- 55.
- nudicaule*
- , L.
-
- 56.
- somniferum*
- , L.
-
- 57.
- Rhæas*
- , L.

CHELIDONIUM

- 58.
- majus*
- , L.

SANGUINARIA

- 59.
- Canadensis*
- , L.

FUMARIACEÆ.

ADLUMIA

- 60.
- cirrhusa*
- , Raf.

DICENTRA

- 61.
- Cucullaria*
- , DC.
-
- 62.
- Canadensis*
- , DC.

CORYDALIS

- 63.
- aurea*
- , Willd.
-
- 64.
- glauca*
- , Pursh.

FUMARIA

- 65.
- officinalis*
- , L.

BRASSICACEÆ.

NASTURTIUM

- 66.
- officinale*
- , R. Br.
-
- 67.
- sylvestre*
- , R. Br.
-
- 68.
- palustre*
- , DC.
-
- 69.
- lacustre*
- , Gray.
-
- 70.
- Armoracia*
- , Fries.

IODANTHUS

- 71.
- hesperidoides*
- , Torr. & Gray.

DENTARIA

- 72.
- diphylla*
- , L.
-
- 73.
- maxima*
- , Nutt.
-
- 74.
- laciniata*
- , Muhl.

CARDAMINE

- 75.
- rhomboidea*
- , DC.
-
- b. purpurea*
- , Torr.
-
- 76.
- rotundifolia*
- , Michx.
-
- 77.
- pratensis*
- , L.
-
- 78.
- hirsuta*
- , L.
-
- b. Virginica*
- , Gray.

ARABIS

- 79.
- lyrata*
- , L.
-
- 80.
- patens*
- , Sulliv.
-
- 81.
- hirsuta*
- , Scop.
-
- 82.
- lævigata*
- , DC.
-
- 83.
- Canadensis*
- , L.
-
- 84.
- petræa*
- , Lam.

TURRITIS

- 85.
- glabra*
- , L.
-
- 86.
- stricta*
- , Graham.
-
- 87.
- brachycarpa*
- , Torr. and Gray.
-
- 88.
- patula*
- , Graham.
-
- 89.
- retrofracta*
- , Hook.

BARBAREA

- 90.
- vulgaris*
- , R. Br.
-
- 91.
- præcox*
- , R. Br.

ERYSIMUM

- 92.
- cheiranthoides*
- , L.
-
- 93.
- lanceolatum*
- , R. Br.

SISYMBRIUM

- 94.
- parviflorum*
- , Lam.
-
- 95.
- officinale*
- , Scop.
-
- 96.
- canescens*
- , Nutt.

SINAPIS

- 97.
- arvensis*
- , L.
-
- 98.
- nigra*
- , L.

DRABA

- 99.
- arabisans*
- , Michx.
-
- 100.
- incana*
- , L.
-
- 101.
- Caroliniana*
- , Walt.
-
- 102.
- verna*
- , L.

VESICARIA

- 103.
- arctica*
- , Torr. and Gray.

CAMELINA

- 104.
- sativa*
- , Crantz.

COCHLEARIA

- 105.
- tridactylitis*
- , DC.

LEPIDIUM

- 106.
- Virginicum*
- , L.
-
- 107.
- intermedium*
- , Gray.

THLASPI

- 108.
- arvense*
- , L.
-
- 109.
- alpestre*
- , L.
-
- 110.
- montanum*
- , L.

CAPSELLA

- 111.
- Bursa-pastoris*
- , Mœnch.

CAKILE

- 112.
- Americana*
- , Nutt.

CAPPARIDACEÆ.

POLANISIA

- 113.
- graveolens*
- , Raf.

VIOLACEÆ.

VIOLA

- 114.
- rotundifolia*
- , Michx.
-
- 115.
- lanceolata*
- , L.
-
- 116.
- primulæfolia*
- , L.
-
- 117.
- blanda*
- , Willd.
-
- 118.
- palustris*
- , L.
-
- 119.
- Selkirkii*
- , Goldie.
-
- 120.
- cucullata*
- , Ait.
-
- b. palmata*
- , Gray.
-
- 121.
- villosa*
- , Walt., Nutt.
-
- 122.
- sagittata*
- , Ait.



VIOLA

123. *pedata*, L.
 124. *rostrata*, Pursh.
 125. *Muhlenbergii*, Torr.
 126. *striata*, Ait.
 127. *Canadensis*, L.
 128. *pubescens*, Ait.
 b. eriocarpa, Nutt.
 129. *hastata*, Michx.
 130. *tricolor*, L.

CISTACEÆ.

HELIANTHEMUM

131. *Canadense*, Michx.
 132. *corymbosum*, Michx.

HUDSONIA

133. *tomentosa*, Nutt.

LECHEA

134. *major*, Michx.
 135. *minor*, Lam.

DROSERACEÆ.

DROSERA

136. *rotundifolia*, L.
 137. *longifolia*, L.
 138. *linearis*, Goldie.

PARNASSIACEÆ.

PARNASSIA

139. *palustris*, L.
 140. *Caroliniana*, Michx.
 141. *parviflora*, DC.

HYPERICACEÆ.

HYPERICUM

142. *pyramidatum*, Ait.
 143. *Kalmianum*, L.
 144. *perforatum*, L.
 145. *corymbosum*, Muhl.
 146. *ellipticum*, Hook.
 147. *sphærocarpon*, Michx.
 148. *mutilum*, L.
 149. *Canadense*, L.
 150. *Sarothra*, Michx.

ELODEA

151. *Virginica*, Nutt.

CARYOPHYLLACEÆ.

SAPONARIA

152. *officinalis*, L.

SILENE

153. *stellata*, Ait.
 154. *inflata*, Smith.

SILENE

155. *Virginica*, L.
 156. *regia*, Sims.
 157. *Antirrhina*, L.
 158. *noctiflora*, L.
 159. *acaulis*, L.

AGROSTEMMA

160. *Githago*, L.

HONKENYA

161. *peploides*, Ehrhart.

ALSINE

162. *Michauxii*, Fenzl.
 163. *Grœnlandica*, Fenzl.

ARENARIA

164. *serpyllifolia*, L.
 165. *stricta*, Michx.
 166. *arctica*, Steven.

MŒHRINGIA

167. *lateriflora*, Fenzl.

STELLARIA

168. *media*, Smith.
 169. *longifolia*, Muhl.
 170. *longipes*, Goldie.
 171. *uliginosa*, Murr.
 172. *crassifolia*, Ehrhart.
 173. *borealis*, Bigelow.

CERASTIUM

174. *vulgatum*, L.
 175. *viscosum*, L.
 176. *nutans*, Raf.
 177. *oblongifolium*, Torr.
 178. *arvense*, L.

SAGINA

179. *procumbens*, L.
 180. *nodosa*, Fenzl.

SPERGULARIA

181. *rubra*, Pers.
 b. marina, Gray.

SPERGULA

182. *arvensis*, L.

ANYCHIA

183. *dichotoma*, Michx.

MOLLUGO

184. *verticillata*, L.

PORTULACACEÆ.

PORTULACA

185. *oleracea*, L.

CLAYTONIA

186. *Virginica*, L.
 187. *Caroliniana*, Michx.

MALVACEÆ.

MALVA

188. *rotundifolia*, L.
 189. *sylvestris*, L.

HIBISCUS

190. Moscheutos, L.

TILIACEÆ.

TILIA

191. Americana, L.
b. pubescens, Gray.

LINACEÆ.

LINUM

192. Virginianum, L.
193. perenne, L.

OXALIDACEÆ.

OXALIS

194. Acetosella, L.
195. stricta, L.
196. corniculata, L.

GERANIACEÆ.

GERANIUM

197. maculatum, L.
198. Carolinianum, L.
199. Robertianum, L.

BALSAMINACEÆ.

IMPATIENS

200. pallida, Nutt.
201. fulva, Nutt.

LIMNANTHACEÆ.

FLÆRKEA

202. proserpinacoides, Willd.

RUTACEÆ.

ZANTHOXYLUM

203. Americanum, Mill.

ANACARDIACEÆ.

RHUS

204. typhina, L.
205. glabra, L.
206. copallina, L.
207. venenata, DC.
208. Toxicodendron, L.
209. aromatica, Ait.

VITACEÆ.

VITIS

210. Labrusca, L.
211. æstivalis, Michx.
212. cordifolia, Michx.
b. riparia, Gray.

AMPELOPSIS

213. quinquefolia, Michx.

RHAMNACEÆ.

RHAMNUS

214. alnifolius, L'Her.

CEANOTHUS

215. Americanus, L.
216. ovalis, Bigelow.

CELASTRACEÆ.

CELASTRUS

217. scandens, L.

EUONYMUS

218. atropurpureus, Jacq.
219. Americanus, L.
220. obovatus, Nutt.

SAPINDACEÆ.

STAPHYLEA

221. trifolia, L.

ACER

222. Pennsylvanicum, L.
223. spicatum, Lam.
224. saccharinum, Wang.
b. nigrum, Gray.
225. dasycarpum, Ehrhart.
226. rubrum, L.

NEGUNDO

227. aceroides, Mœnch.

POLYGALACEÆ.

POLYGALA

228. fastigiata, Nutt.
229. Nuttallii, Torr. & Gray.
230. verticillata, L.
231. Senega, L.
b. latifolia, Torr. & Gray.
232. polygama, Walt.
233. paucifolia, Willd.

FABACEÆ.

LUPINUS

234. perennis, L.

TRIFOLIUM

235. *arvense*, L.
 236. *pratense*, L.
 237. *repens*, L.
 238. *agrarium*, L.
 239. *minus*, Rell.
 240. *procumbens*, L.

MELILOTUS

241. *officinalis*, Willd.
 242. *alba*, Lam.
 243. *lupulina*, L.

ROBINIA

244. *Pseudacacia*, L.
 245. *viscosa*, Vent.

ASTRAGALUS

246. *Canadensis*, L.
 247. *Labradoricus*, DC.
 248. *alpinus*, L.
 249. *Cooperi*, Gray.

OXYTROPIS

250. *Lambertii*, Pursh.

HEDYSARUM

251. *boreale*, Nutt.

DESMODIUM

252. *nudiflorum*, DC.
 253. *acuminatum*, DC.
 254. *pauciflorum*, DC.
 255. *cuspidatum*, Torr. & Gray.
 256. *Dillenii*, Darlingt.
 257. *paniculatum*, DC.
 258. *Canadense*, DC.

LESPEDeza

259. *repens*, Torr. & Gray.
 260. *violacea*, Pers.
 261. *hirta*, Ell.
 262. *capitata*, Michx.

VICIA

263. *sativa*, L.
 264. *tetrasperma*, L.
 265. *hirsuta*, Koch.
 266. *Cracca*, L.
 267. *Caroliniana*, Walt.
 268. *Americana*, Muhl.

LATHYRUS

269. *maritimus*, Bigelow.
 270. *venosus*, Muhl.
 271. *ochroleucus*, Hook.
 272. *palustris*, L.
 273. *myrtifolius*, Muhl.

PHASEOLUS

274. *perennis*, Walt.
 275. *diversifolius*, Pers.
 276. *helvolus*, L.

APIOS

277. *tuberosa*, Mœnch.

AMPHICARPÆA

278. *monoica*, Nutt.

BAPTISIA

279. *tinctoria*, R. Br.

BAPTISIA

280. *leucantha*, Torr. & Gray.
 281. *alba*, R. Br.

GYMNOCLADUS

282. *Canadensis*, Lam.

GLEDITSCHIA

283. *triacanthos*, L.

ROSACEÆ.

PRUNUS

284. *Americana*, Marsh.
 285. *pumila*, L.
 286. *Pennsylvanica*, L.
 287. *Virginiana*, L.
 288. *serotina*, Ehrhart.

SPIRÆA

289. *opulifolia*, L.
 290. *salicifolia*, L.
 291. *tomentosa*, L.

GILLENIA

292. *trifoliata*, Mœnch.

AGRIMONIA

293. *Eupatoria*, L.
 294. *parviflora*, Ait.

SANGUISORBA

295. *Canadensis*, L.

SIBBALDIA

296. *procumbens*, L.

DRYAS

297. *Drummondii*, Hook.
 298. *octopetala*, L.

GEUM

299. *album*, Gmelin.
 300. *macrophyllum*, Willd.
 301. *Virginianum*, L.
 302. *strictum*, Ait.
 303. *rivale*, L.
 304. *triflorum*, Pursh.
 305. *geniculatum*, Michx.

WALDSTEINIA

306. *fragarioides*, Tratt.

POTENTILLA

307. *Norvegica*, L.
 308. *Canadensis*, L.
 309. *argentea*, L.
 310. *Pennsylvanica*, L.
 311. *arguta*, Pursh.
 312. *Anserina*, L.
 313. *fruticosa*, L.
 314. *tridentata*, Ait.
 315. *palustris*, Scop.

FRAGARIA

316. *Virginiana*, Ehrhart.
 317. *vesca*, L.

DALIBARDA

318. *repens*, L.

RUBUS

319. *odoratus*, L.
 320. *Nutkanus*, Moçino.

RUBUS

321. Chamæmorus, L.
 322. triflorus, Richards.
 323. strigosus, Michx.
 324. occidentalis, L.
 325. villosus, Ait.
 326. Canadensis, L.
 327. hispidus, L.
 328. arcticus, L.

ROSA

329. Carolina, L.
 330. lucida, Ehrhart.
 331. blanda, Ait.
 332. rubiginosa, L.
 333. micrantha, Smith.
 334. stricta, Lindl.

CRATÆGUS

335. coccinea, L.
 336. tomentosa, L.
 b. pyrifolia, Gray.
 c. punctata, Gray.
 337. Crus-Galli, L.

PYRUS

338. coronaria, S.
 339. arbutifolia, L.
 340. Americana, DC.

AMELANCHIER

341. Canadensis, Torr. & Gray,
 vars. a. Botryapium, b. rotundifolia, c. oblongifolia,
 and d. oligocarpa of Gray.

MELASTOMACEÆ.

RHEXIA

342. Virginica, L.

LYTHRACEÆ.

LYTHRUM

343. alatum, Pursh.
 344. Salicaria, L.

NESÆA

345. verticillata, H.B.K.

ONAGRACEÆ.

EPILOBIUM

346. angustifolium, L.
 347. alpinum, L.
 b. majus, Gray.
 348. palustre, L.
 b. lineare, Gray.
 349. molle, Torr.
 350. tetragonum, L.
 351. coloratum, Muhl.

GENOTHERA

352. biennis, L., *vars. a. muricata,*
 b. parvifolia and c. cruciata
 of Torr. & Gray.
 353. glauca, Michx.
 354. chrysantha, Michx.
 355. pumila, L.

GAURA

356. biennis, L.

LUDWIGIA

357. alternifolia, L.
 358. palustris, Ell.

CIRCÆA

359. Lutetiana, L.
 360. alpina, L.

PROSPERPINACA

361. palustris L.

MYRIOPHYLLUM

362. spicatum, L.
 363. verticillatum, L.
 364. heterophyllum, Michx.
 365. tenellum, Bigelow.

HIPPURIS

366. vulgaris, L.

GROSSULACEÆ.

RIBES

367. Cynosbati, L.
 368. hirtellum, Michx.
 369. rotundifolium, Michx.
 370. lacustre, Poir.
 371. prostratum, L'Her.
 372. oxycanthoides, L.
 373. floridum, L.
 374. rubrum, L.

CUCURBITACEÆ.

SICYOS

375. angulatus, L.

ECHINOCYSTIS

376. lobata, Torr. & Gray.

CRASSULACEÆ.

SEDUM

377. ternatum, Gray.
 378. Rhodiola, DC.

PENTHORUM

379. sedoides, L.

SAXIFRAGACEÆ.

SAXIFRAGA

380. oppositifolia, L.
 381. stellaris, L.
 382. rivularis, L.

SAXIFRAGA

383. aizoides, L.
 384. tricuspidata, Retz.
 385. nivalis, L.
 386. Aizoon, Jacq.
 387. Virginienſis, Michx.
 388. Pennſylvanica, L.
 389. Grœnlandica, H. B. K.

HEUCHERA

390. Americana, L.

MITELLA

391. diphylla, L.
 392. nuda, L.

TIARELLA

393. cordifolia, L.

CHRYSOSPLENIUM

394. Americanum, Schwein.

HAMAMELACEÆ.

HAMAMELIS

395. Virginica, L.

APIACEÆ.

HYDROCOTYLE

396. Americana, L.

SANICULA

397. Canadensis, L.
 398. Marilandica, L.

DAUCUS

399. *Carota*, L.

HERACLEUM

400. lanatum, Michx.

PASTINACA

401. *sativa*, L.

ANGELICA

402. lucida, L.

ARCHANGELICA

403. atropurpurea, Hoffm.
 404. peregrina, Nutt.

CONIOSELINUM

405. Canadense, Torr. & Gray.

LIGUSTICUM

406. Scoticum, L.
 407. actœifolium, Michx.

THASPIUM

408. barbinode, Nutt.
 409. aureum, Nutt.
 b. apterum, Nutt.
 410. trifoliatum, Gray.
 b. atropurpureum, T. & G.
 c. apterum, Gray.

ZIZIA

411. integerrima, DC.

CICUTA

412. maculata, L.
 413. bulbifera, L.

SIUM

414. lineare, Michx.
 415. latifolium, L.

CRYPTOTÆNIA

416. Canadensis, DC.

OSMORRHIZA

417. longistylis, DC.
 418. brevistylis, DC.

CONIUM

419. *maculatum*, L.

ERIGENIA

420. bulbosa, Nutt.

ARALIACEÆ.

ARALIA

421. racemosa, L.
 422. hispida, Michx.
 423. nudicaulis, L.
 424. quinquefolia, Gray.
 425. trifolia, Gray.

CORNACEÆ.

CORNUS

426. Canadensis, L.
 427. florida, L.
 428. circinata, L'Her.
 429. sericea, L.
 430. stolonifera, Michx.
 431. Suecica, L.
 432. paniculata, L'Her.
 433. alternifolia, L.

CAPRFOLIACEÆ.

LINNÆA

434. borealis, Gronov.

SYMPHORICARPUS

435. occidentalis, R. Br.
 436. racemosus, Michx.
 437. vulgaris, Michx.

LONICERA

438. parviflora, Lam.
 439. hirsuta, Eaton.
 440. involucrata, H.B.K.
 441. ciliata, Muhl.
 442. cœrulea, L.
 443. oblongifolia, Muhl.

DIERVILLA

444. trifida, Mœnch.

TRIOSTEUM

445. perfoliatum, L.

SAMBUCUS

446. Canadensis, L.
 447. pubens, Michx.

VIBURNUM

448. nudum, L.
 449. prunifolium, L.

VIBURNUM

450. *Lentago*, L.
 451. *dentatum*, L.
 452. *pubescens*, Pursh.
 453. *acerifolium*, L.
 454. *pauciflorum*, Pylaie.
 455. *Opulus*, L.
 456. *lantanoides*, Michx.

RUBIACEÆ.

GALIUM

457. *Aparine*, L.
 458. *asprellum*, L.
 459. *concinnum*, Torr. & Gray.
 460. *trifidum*, L.
 461. *triflorum*, Michx.
 462. *circæzans*, Michx.
 463. *lanceolatum*, Torr.
 464. *boreale*, L.

CEPHALANTHUS

465. *occidentalis*, L.

MITCHELLA

466. *repens*, L.

OLDENLANDIA

467. *purpurea*, Gray,
 b. longifolia, Gray.
 c. ciliolata, Gray.
 468. *cærulea*, Gray.

VALERIANACEÆ.

VALERIANA

469. *sylvatica*, Richards.
 470. *edulis*, Nutt.

DIPSACEÆ.

DIPSACUS

471. *sylvestris*, Mill.

ASTERACEÆ.

VERNONIA

472. *Noveboracensis*, Willd.

LIATRIS

473. *squarrosa*, Willd.
 474. *cylindracea*, Michx.
 475. *scariosa*, Willd.
 476. *spicata*, Willd.

EUPATORIUM

477. *purpureum*, L.
 478. *rotundifolium*, L.
 479. *perfoliatum*, L.
 480. *ageratoides*, L.

NARDOSMIA

481. *palmata*, Hook.
 482. *sagittata*, Hook.
 483. *frigida*, Hook.

TUSSILAGO

484. *Farfara*, L.

ADENOCAULON

485. *bicolor*, Hook.

SERICOCARPUS

486. *solidagineus*, Nees.

ASTER

487. *corymbosus*, Ait.
 488. *macrophyllus*, L.
 489. *Radula*, Ait.
 490. *patens*, Ait.
 491. *lævis*, L.
 492. *lævigatus*, Willd.
 493. *cyaneus*, Hoffm.
 494. *azureus*, Lindl.
 495. *undulatus*, L.
 496. *cordifolius*, L.
 497. *sagittifolius*, Willd.
 498. *ericoides*, L.
 499. *multiflorus*, Ait.
 500. *dumosus*, L.
 501. *Tradescanti*, L.
 502. *miser*, L., Ait.
 503. *Lamarckianus*, Nees.
 504. *simplex*, Willd.
 505. *tenuifolius*, L.
 506. *carneus*, Nees.
 507. *æstivus*, Ait.
 508. *borealis*, Provencher.
 509. *Novi-Belgii*, L.
 510. *longifolius*, Lam.
 511. *puniceus*, L.
 512. *preanthoides*, Muhl.
 513. *oblongifolius*, Nutt.
 514. *Novæ-Angliæ*, L.
 515. *graminifolius*, Pursh.
 516. *acuminatus*, Michx.
 517. *nemoralis*, Ait.
 518. *ptarmicoides*, Torr. & Gr.

ERIGERON

519. *Canadense*, L.
 520. *bellidifolium*, Muhl.
 521. *Philadelphicum*, L.
 522. *glabellum*, Nutt.
 523. *annuum*, Pers.
 524. *strigosum*, Muhl.

DIPLOPAPPUS

525. *linariifolius*, Hook.
 526. *umbellatus*, Torr. & Gr.
 527. *cornifolius*, Darl.

BOLTONIA

528. *glastifolia*, L'Her.

SOLIDAGO

529. *squarrosa*, Muhl.
 530. *bicolor*, L.
 531. *latifolia*, L.
 532. *cæsia*, L.

SOLIDAGO

533. *puberula*, Nutt.
 534. *stricta*, Ait.
 535. *speciosa*, Nutt.
 536. *Virga-aurea*, L.
 b. alpina, Bigel.
 537. *humilis*, Pursh.
 538. *thyrsoides*, E. Meyer.
 539. *rigida*, L.
 540. *sempervirens*, L.
 541. *neglecta*, Torr. & Gr.
 542. *patula*, Muhl.
 543. *arguta*, Ait.
 544. *Muhlenbergii*, Torr. & Gr.
 545. *altissima*, L.
 546. *odora*, Ait.
 547. *nemoralis*, Ait.
 548. *Canadensis*, L.
 549. *serotina*, Ait.
 550. *gigantea*, Ait.
 551. *lanceolata*, L.
 552. *tenuifolia*, Pursh.

INULA

553. *Helenum*, L.

POLYMNIA

554. *Canadensis*, L.

AMBROSIA

555. *trifida*, L.
 556. *artemisiifolia*, L.

XANTHIUM

557. *strumarium*, L.
 b. echinatum, Gray

RUDBECKIA

558. *laciniata*, L.
 559. *subtomentosa*, Pursh.
 560. *fulgida*, Ait.
 561. *hirta*, L.

HELIANTHUS

562. *microcephalus*, Torr. & Gr.
 563. *giganteus*, L.
 564. *strumosus*, L.
 565. *divaricatus*, L.
 566. *tracheliifolius*, Willd.
 567. *decapetalus*, L.

COREOPSIS

568. *verticillata*, L.
 569. *lanceolata*, L.

BIDENS

570. *frondosa*, L.
 571. *counata*, Muhl.
 572. *cernua*, L.
 573. *chrysanthemoides*, Michx.
 574. *Beckii*, Torr.

HELENIUM

575. *autumnale*, L.

MARUTA

576. *Cotula*, DC.

ACHILLEA

577. *Millefolium*, L.

LEUCANTHEMUM

578. *vulgare*, Lam.

MATRICARIA

579. *inodora*, L.

TANACETUM

580. *vulgare*, L.
 581. *Huronense*, Nutt.

ARTEMISIA

582. *borealis*, Pallas.
 583. *Canadensis*, Michx.
 584. *Ludoviciana*, Nutt.
 585. *vulgaris*, L.
 586. *biennis*, Willd.

GNAPHALIUM

587. *decurrens*, Ives.
 588. *polycephalum*, Michx.
 589. *uliginosum*, L.

ANTENNARIA

590. *margaritacea*, R. Br.
 591. *plantaginifolia*, Hook.
 592. *carpathica*, R. Br.

ERECHTHITES

593. *hieracifolia*, Raf.

CACALIA

594. *suaveolens*, L.
 595. *atriplicifolia*, L.

SENECIO

596. *vulgaris*, L.
 597. *aureus*, L.
 598. *tomentosus*, Michx.
 599. *canus*, Hook.
 600. *pseudo-arnica*, L.

ARNICA

601. *mollis*, Hook.

CENTAUREA

602. *Cyanus*, L.

CNIGUS

603. *benedictus*, L.

CIRSIIUM

604. *lanceolatum*, Scop.
 605. *Pitcheri*, Torr. & Gr.
 606. *undulatum*, Spreng.
 607. *discolor*, Spreng.
 608. *muticum*, Michx.
 609. *horridulum*, Michx.
 610. *arvense*, Scop.

ONOPORDON

611. *acanthium*, L.

LAPPA

612. *major*, Gærtn.

CICHORIUM

613. *Intybus*, L.

KRIGIA

614. *Virginica*, Willd.

CYNTHIA

615. *Virginica*, Don.

LEONTODON

616. *autumnale*, L.

HIERACIUM

617. *Canadense*, Michx.
 618. *Pilosella*, L.
 619. *vulgatum*, Fries.
 620. *scabrum*, Michx.
 621. *longipilum*, Torr.
 622. *Gronovii*, L.
 623. *venosum*, L.
 624. *paniculatum*, L.

NABALUS

625. *albus*, Hook.
 626. *altissimus*, Hook.
 627. *Fraseri*, DC.
 628. *nanus*, DC.
 629. *racemosus*, Hook.

CREPIS

630. *runcinatus*, Torr. & Gray.

TARAXACUM

631. *Dens-leonis*, Desf.

EACTUCA

632. *elongata*, Muhl.

MULGEDIUM

633. *pulchellum*, Nutt.
 634. *Floridanum*, DC.
 635. *leucophæum*, DC.

SONCHUS

636. *oleraceus*, L.
 637. *asper*, Vill.
 638. *arvensis*, L.

LOBELIACEÆ.

LOBELIA

639. *cardinalis*, L.
 640. *syphilitica*, L.
 641. *puberula*, Michx.
 642. *inflata*, L.
 643. *spicata*, Lam.
 644. *Nuttallii*, Rœn. & Sch.
 645. *Kalmii*, L.
 646. *Dortmanna*, L.

CAMPANULACEÆ.

CAMPANULA

647. *rotundifolia*, L.
 b. linifolia, Gray.
 648. *aparinoides*, Pursh.
 649. *Americana*, L.

SPECULARIA

650. *perfoliata*, DC.

ERICACEÆ.

GAYLUSSACIA

651. *resinosa*, Torr. & Gr.

VACCINIUM

652. *Oxycoccus*, L.
 653. *macrocarpon*, Ait.

VACCINIUM

654. *Vitis-Idæa*, L.
 655. *cæspitosum*, Michx.
 656. *uliginosum*, L.
 657. *Pennsylvanicum*, L.
 658. *Canadense*, Kalm.
 659. *vaccilans*, Solander.
 660. *corymbosum*, L.
 b. amœnum, Gray.
 c. atrocarpum, Gray.

CHIOGENES

661. *hispidula*, Torr. & Gr.

ARCTOSTAPHYLOS

662. *Uva-ursi*, Spreng.
 663. *alpina*, Spreng.

EPIGÆA

664. *repens*, L.

GAULTHERIA

665. *procumbens*, L.
 666. *racemosa*, Gray.

CASSANDRA

667. *calyculata*, Don.

CASSIOPE

668. *hypnoides*, Don.

ANDROMEDA

669. *polifolia*, L.
 670. *tetragona*, L.
 671. *ligustrina*, Muhl.

KALMIA

672. *latifolia*, L.
 673. *angustifolia*, L.
 674. *glauca*, Ait.

AZALEA

675. *viscosa*, L.

RHODODENDRON

676. *Lapponicum*, Wahl.

RHODORA

677. *Canadensis*, L.

LEDUM

678. *latifolium*, Ait.

LOISELEURIA

679. *palustre*, L.
 680. *procumbens*, Desv.

PYROLA

681. *rotundifolia*, L.
 682. *elliptica*, Nutt.
 683. *chlorantha*, Swartz.
 684. *secunda*, L.
 685. *minor*, L.

MONESES

686. *uniflora*, Gray.

CHIMAPHILLA

687. *umbellata*, Nutt.
 688. *maculata*, Pursh.

PTEROSPORA

689. *Andromedea*, Nutt.

MONOTROPA

690. *uniflora*, L.
 691. *Hypopitys*, L.

AQUIFOLIACEÆ.

ILEX

692. *verticillata*, Gray.
693. *laevigata*, Gray.

NEMOPANTHES

694. *Canadensis*, DC.

PLANTAGINACEÆ.

PLANTAGO

695. *major*, L.
696. *cordata*, Lam.
697. *maritima*, L.
698. *lanceolata*, L.
699. *media*, L.
700. *Virginica*, L.

PLUMBAGINACEÆ.

ARMERIA

701. *vulgaris*, Wild.

PRIMULACEÆ.

PRIMULA

702. *farinosa*, L.
703. *Mistassinica*, Michx.

ANDROSACE

704. *occidentalis*, Pursh.

TRIENTALIS

705. *Americana*, Pursh.

LYSIMACHIA

706. *stricta*, Ait.
707. *quadrifolia*, Ait.
708. *ciliata*, L.
709. *lanceolata*, Walt.
710. *longifolia*, Pursh.

NAUMBURGIA

711. *thyrsiflora*, Reichenb.

GLAUX

712. *maritima*, L.

SAMOLUS

713. *Valerandi*, L., *var.* '
a. *Americanus*, Gray.

LENTIBULACEÆ.

UTRICULARIA

714. *vulgaris*, L.
715. *minor*, L.
716. *intermedia*, Hayne.
717. *gibba*, L.
718. *subulata*, L.
719. *cornuta*, Michx.

PINGUICULA

720. *vulgaris*, L.

OROBANCHACEÆ.

EPIPEGUS

721. *Virginiana*, Bart.

CONOPHOLIS

722. *Americana*, Wallr.

APHYLLON

723. *uniflorum*, Torr. & Gr.
724. *fasciculatum*, Torr. & Gr.

SCROPHULARICEÆ.

VERBASCUM

725. *Thapsus*, L.
726. *Blattaria*, L.
727. *Lychnitis*, L.

LINARIA

728. *Canadensis*, Spreng.
729. *vulgaris*, Mill.
730. *Elatine*, Mill.

SCROPHULARIA

731. *nodosa*, L.

CHELONE.

732. *glabra*, L.

PENTSTEMON

733. *pubescens*, Solander.

MIMULUS

734. *ringens*, L.
b. *alba*, Lawson.
735. *Jamesii*, Torr.

GRATIOLA

736. *Virginiana*, L.
737. *aurea*, Muhl.

ILYSANTHES

738. *gratioloides*, Benth.

LIMOSELLA

739. *aquatica*, L., *var. a. tenni-*
folia, Gray.

VERONICA

740. *Virginica*, L.
741. *Anagallis*, L.
742. *Americana*, Schwein.
743. *scutellata*, L.
b. *tomentosa*, Mac.
744. *officinalis*, L.
745. *serpyllifolia*, L.
746. *peregrina*, L.
747. *arvensis*, L.
748. *agrestis*, L.
749. *Buxbaumii*, Tenore.
750. *hederæfolia*, L.

GERARDIA

751. *purpurea*, L.
752. *tenuifolia*, Vahl.
753. *flava*, L.
754. *quercifolia*, Pursh.
755. *integrifolia*, Gray.
756. *pedicularia*, L.

CASTILLEIA

757. *coccinea*, Spreng.
758. *septentrionalis*, Lindl.

EUPHRASIA

759. *officinalis*, L.

RHINANTHUS

760. *Crista-galli*, L.

PEDICULARIS

761. *Canadensis*, L.
762. *lanceolata*, Michx.

MELAMPYRUM

763. *Americanum*, Michx.
764. *pratense*, L.

ACANTHACEÆ.

DIANTHERA

765. *Americana*, L.

VERBENACEÆ.

VERBENA

766. *angustifolia*, L.
767. *hastata*, L.
768. *urticifolia*, L.

PHRYMA

769. *Leptostachya*, L.

LAMIACEÆ.

TEUCRIUM

770. *Canadense*, L.

ISANTHUS

771. *cæruleus*, Michx.

MENTHA

772. *viridis*, L.
773. *piperita*, L.
774. *Canadensis*, L.

LYCOPUS

775. *Virginicus*, L.
776. *Europæus*, L.
b. *sinuatus*, Gray.

GUNILA.

777. *Mariana*, L.

PYCNANTHEMUM

778. *incanum*, Michx.
779. *lanceolatum*, Pursh.
780. *montanum*, Michx.

CALAMINTHA

781. *glabella*, Benth., *var. a.*
Nuttallii, Gray.
782. *Clinopodium*, Benth.

HEDEOMA

783. *pulegioides*, Pers.
784. *hispida*, Pursh.

COLLINSONIA

785. *Canadensis*, L.

MONARDA

786. *didyma*, L.
787. *fistulosa*, L.
788. *punctata*, L.

LOPHANTHUS

789. *nepetoides*, Benth.
790. *scrophulariæfolius*, Benth.

NEPETA

791. *Cataria*, L.

DRACOCEPHALUM

792. *parviflorum*, Nutt.

PHYSOSTEGIA

793. *Virginiana*, Benth.

PRUNELLA

794. *vulgaris*, L.

SCUTELLARIA

795. *integrifolia*, L.
796. *nervosa*, Pursh.
797. *parvula*, Michx.
798. *galericulata*, L.
799. *lateriflora*, L.

MARRUBIUM

800. *vulgare*, L.

GALEOPSIS

801. *Tetrahit*, L.
802. *Ladanum*, L.

STACHYS

803. *palustris*, L.
b. *aspera*, Gray.
804. *sylvatica*, L.

LEONURUS

805. *Cardiaca*, L.

LAMIUM

806. *amplexicaule*, L.

BORRAGINACEÆ.

ECHIUM

807. *vulgare*, L.

LYCOPSIS

808. *arvensis*, L.

SYMPHYTUM

809. *officinale*, L.

ONOSMODIUM

810. *Virginianum*, DC.
811. *Carolinianum*, DC.

LITHOSPERMUM

812. *arvense*, L.
813. *officinale*, L.
814. *latifolium*, Michx.
815. *hirtum*, Lechm.
816. *canescens*, Lechm.
817. *angustifolium*, Michx.

MERTENSIA

818. *Virginica*, DC.
819. *maritima*, Don.
820. *pilosa*, DC.
821. *paniculata*, Don.

MYOSOTIS

822. *palustris*, With.
b. *laxa*.

823. *arvensis*, L.

824. *verna*, Nutt.

ECHINOSPERMUM

825. *Lappula*, Lehm.

CYNOGLOSSUM

826. *officinale*, L.

827. *Virginicum*, L.

828. *Morisoni*, DC.

HYDROPHYLLACEÆ.

HYDROPHYLLUM

829. *Virginicum*, L.

830. *Canadense*, L.

831. *appendiculatum*, Michx.

PHACELIA

832. *Franklinii*, Gray.

POLEMONIACEÆ.

POLEMONIUM

833. *cæruleum*, L.

PHLOX

834. *divaricata*, L.

835. *subulata*, L.

DIAPENSIA

836. *Laponica*, L.

CONVOLVULACEÆ.

CONVOLVULUS

837. *arvensis*, L.

CALYSTEGIA

838. *sepium*, R. Br.

839. *siphamea*, Pursh.

CUSCUTA

840. *umbrosa*, Beyrich.

841. *Gronovii*, Willd.

SOLANACEÆ.

SOLANUM

842. *Dulcamara*, L.

843. *nigrum*, L.

PHYSALIS

844. *viscosa*, L.

845. *physaloides*, Gærtn.

HYOSCYAMUS.

846. *niger*, L.

DATURA.

847. *Stramonium*, L.

GENTIANACEÆ.

SABBATIA

848. *angularis*, Pursh.

FRASERA

849. *Carolinensis*, Walt.

HALENIA

850. *deflexa*, Griseb.

GENTIANA

851. *quinqueflora*, Lam.

852. *crinita*, Fœrl.

853. *detonsa*, Fries.

854. *alba*, Muhl.

855. *Andrewsii*, Griseb.

856. *Saponaria*, L.

b. *linearis* Gray.

857. *acuta*, Michx.

MENYANTHES

858. *trifoliata*, L.

LIMNANTHEMUM

859. *lacunosum*, Griseb.

APOCYNACEÆ.

APOCYNUM

860. *androsæmifolium*, L.

861. *cannabinum*, L.

b. *glaberrimum*, DC.

c. *pubescens*, DC.

d. *hypericifolium*, Gray.

ASCLEPIADACEÆ.

ASCLEPIAS

862. *Cornuti*, Decaisne.

863. *phytolaccoides*, Pursh.

864. *purpurascens*, L.

865. *variegata*, L.

866. *quadrifolia*, Jacq.

867. *obtusifolia*, Michx.

868. *incarnata*, L.

869. *tuberosa*, L.

ACERATES

870. *viridiflora*, Ell.

OLEACEÆ.

FRAXINUS

871. *Americana*, L.

872. *pubescens*, Lam.

873. *sambucifolia*, Lam.

ARISTOLOCHIACEÆ.

ASARUM

874. *Canadense*, L.

PHYTOLACCACEÆ.

PHYTOLACCA

875. *decandra*, L.



CHENOPODIACEÆ.

CHENOPODIUM

876. *hybridum*, L.
877. *urbicum*, L.
878. *album*, L.
879. *ambrosioides*, L.
880. *maculatum*, L.

BLITUM

881. *capitatum*, L.

ATRIPLEX

882. *hastata*, L.

SALICORNIA

883. *herbacea*, L.

CHENOPODINA

884. *maritidma*, Moquin.

SALSOLA

885. *Kali*, L.

CORISPERMUM

886. *hyssopifolium*, L.

AMARANTACEÆ,

AMARANTHUS

887. *paniculatus*, L.
888. *hybridus*, L.
889. *retroflexus*, L.
890. *albus*, L.

MONTELIA

891. *tamariscina*, Gray.
892. *cannabina*, L.

POLYGONACEÆ.

POLYGONUM

893. *viviparum*, L.
894. *amphibium*, L.
895. *nodosum*, Pers., *var.*
 a. *incarnatum*, Gray.
896. *Pennsylvanicum*, L.
897. *Persicaria*, L.
898. *Hydropiper*, L.
899. *acre*, H.B.K.
900. *hydropiperoides*, Michx.
901. *aviculare*, M.
 b. *erectum*, Roth.
902. *ramosissimum*, Michx.
903. *tenue*, Michx.
904. *articulatum*, L.
905. *Virginianum*, L.
906. *arifolium*, L.
907. *sagittatum*, L.
908. *Convolvulus*, L.
909. *cilinode*, Michx.
910. *dumetorum*, L.

FAGOPYRUM

911. *esculentum*, Moench.

OXYRIA

912. *digyna*, Campd.

RUMEX

913. *verticillatus*, L.
914. *altissimus*, Wood.
915. *salicifolius*, Weinmann.
916. *aquaticus*, Smith.
917. *obtusifolius*, L.
918. *crispus*, L.
919. *conglomeratus*, Murray.
920. *sanguineus*, L.
921. *maritimus*, L.
922. *acetosa*, L.
923. *acetosella*, L.

LAURACEÆ.

SASSAFRAS

924. *officinale*, Nees.

BENZOIN.

925. *odoriferum*, Nees.

THYMELEACEÆ.

DIRCA

926. *palustris*, L.

ELÆAGNACEÆ.

SHEPHERDIA

927. *Canadensis*, Nutt.
928. *angustifolia*, L.

ELEGANUS.

929. *argentea*, Pursh.

SANTALACEÆ.

COMANDRA

930. *umbellata*, Nutt.
931. *livida*, Richards.

SAURURACEÆ.

SAURURUS

932. *cernuus*, L.

CERATOPHYLLACEÆ.

CERATOPHYLLUM

933. *demersum*, L.

CALLITRICHACEÆ.

CALLITRICHE

934. *verna*, L.
 b. *platycarpa*, Gray.
935. *autumnalis*, L.
 b. *linearis* Gray.

EUPHORBIACEÆ.

EUPHORBIA

936. *polygonifolia*, L.
 937. *Geyeri*, Engelm.
 938. *maculata*, L.
 939. *glyptosperma*, Jacq.
 940. *hypericifolia*, L.
 941. *corollata*, L.
 942. *Helioscopia*, L.
 943. *obtusata*, Pursh.
 944. *Darlingtonii*, Gray.
 945. *Esula*, L.
 946. *crestatâ*, Lindl.
 947. *Lathyris*, L.

ACALYPHA

948. *Virginica*, L.
 949. *Caroliniana*, Walt.

EMPETRACEÆ.

EMPETRUM.

950. *nigrum*, L.

COREMA

951. *Conradii*, Torr.

URTICACEÆ,

ULMUS

952. *fulva*, Michx.
 953. *Americana*, L.
 954. *racemosa*, Thomas.

CELTIS

955. *occidentalis*, L.

URTICA

956. *gracilis*, Ait.
 957. *dioica*, L.
 958. *urens*, L.
 959. *purpurascens*, Nutt.

LAPORTEA

960. *Canadensis*, Gaudich.

PILEA

961. *pumila*, Gray.

BEHMERIA

962. *cylindrica*, Willd.
 963. *lateriflora*, Muhl.

PARIETARIA

964. *Pennsylvanica*, Muhl.

CANNABIS

965. *sativa* L.

HUMULUS

966. *Lupulus*, L.

PLATANACEÆ.

PLATANUS

967. *occidentalis*, L.

JUGLANDACEÆ.

JUGLANS

968. *cinerea*, L.
 969. *nigra*, L.

CARYA

970. *alba*, Nutt.
 971. *sulcata*, Nutt.
 972. *tomentosa*, Nutt.
 973. *microcarpa*, Nutt.
 974. *glabra*, Torr.
 975. *amara*, Nutt.

CORYLACEÆ.

QUERCUS

976. *macrocarpa*, Michx.
 b. olivæformis, Gray.
 977. *obtusiloba*, Michx.
 978. *alba*, L.
 979. *Prinus*, L.
 b. monticola, Michx.
 c. discolor, Michx.
 980. *Castanea*, Willd.
 981. *prinoides*, Willd.
 982. *nigra*, L.
 983. *ilicifolia*, Wang.
 984. *tinctoria*, Bartram.
 985. *coccinea*, Wang.
 986. *rubra*, L.

CASTANEA

987. *vesca*, L.,
 b. Americana, Gray.
 988. *pumila*, Michx.

FAGUS.

989. *ferruginea*, Ait.

CORYLUS

990. *Americana*, Walt.
 991. *rostrata*, Ait.

CARPINUS

992. *Americana*, Michx.

OSTRYA

993. *Virginica*, Willd.

MYRICACEÆ.

MYRICA

994. *Gale*, L.
 995. *cerifera*, L.

COMPTONIA

996. *asplenifolia*, Ait.

BETULACEÆ.

BETULA

997. *populifolia*, Ait.
 998. *papyracea*, Ait.
 999. *nigra*, L.

BETULA.

1000. *excelsa*, Ait.
 1001. *lenta*, L.
 1002. *pumila*, L.
 1003. *nana*, L.

ALNUS

1004. *incana*, Willd.
 1005. *serrulata*, L.
 1006. *viridis*, DC.

SALICACEÆ.

SALIX

1007. *candida*, Willd.
 1008. *humilis*, Marshall.
 1009. *discolor*, Muhl.
 1010. *eriocephala*, Michx.
 1011. *sericea*, Marshall.
 1012. *petiolaris*, Smith.
 1013. *cordata*, Muhl.
 1014. *angustata*, Pursh.
 1015. *rostrata*, Richardson.
 1016. *alba*, L.
 1017. *nigra*, Marshall.
 1018. *lucida*, Muhl.
 1019. *longifolia*, Muhl.
 1020. *pedicellaris*, Pursh.
 1021. *Uva-ursi*, Pursh.
 1022. *repens*, L.
 1023. *herbacea*, L.
 1024. *reticulata*, L.
 b. vestita, And.

POPULUS

1025. *tremuloides*, Michx.
 1026. *grandidentata*, Michx.
 1027. *heterophylla*, L.
 1028. *monilifera*, Ait.
 1029. *angulata*, Ait.
 1030. *balsamifera*, L.
 1031. *candicans*, Ait.

PINACEÆ.

PINUS

1032. *Banksiana*, Lambert.
 1033. *inops*, Ait.
 1034. *resinosa*, Ait.
 1035. *mitis*, Michx.
 1036. *rigida*, Miller.
 1037. *Tæda*, L.
 1038. *Strobus*, L.

ABIES

1039. *balsamea*, Marshall.
 1040. *Fraseri*, Pursh.
 1041. *Canadensis*, Michx.
 1042. *nigra*, Poir.
 1043. *alba*, Michx.

LARIX

1044. *Americana*, Michx.

THUJA

1045. *occidentalis*, L.

CUPRESSUS

1046. *thyoides*, L.

JUNIPERUS

1047. *communis*, L.
 1047.* *Virginiana*, L.

TAXUS

1048. *baccata*, L., *var. a. Canadensis*, Gray.

ARACEÆ.

ARISÆMA

1049. *triphyllum*, Torr.

PELTANDRA.

1050. *Virginica*, Raf.

CALLA

1051. *palustris*, L.

SYMPLOCARPUS

1052. *fetidus*, Salish.

ACORUS

1053. *Calamus*, L.

TYPHACEÆ.

TYPHA

1054. *latifolia*, L.
 1055. *angustifolia*, L.

SPARGANIUM

1056. *eurycarpum*, Engelm.
 1057. *ramosum*, Hudson.
 1058. *simplex*, Hudson.
 1059. *natans* L., *var. a. affine*,
 Fries.
 1060. *angustifolium*, Michx.

LEMNACEÆ.

LEMNA

1061. *trifulca*, L.
 1062. *minor*, L.
 1063. *polyrrhiza*, L.
 1064. *gibba*, L.

NAIADACEÆ.

NAIAS

1065. *flexilis*, Rostk.

ZANNICHELLIA

1066. *palustris*, L.

ZOSTERA

1067. *marina*, L.

POTAMOGETON

1068. *pectinatus*, L.
 1069. *Robbinsii*, Oakes.
 1070. *hybridus*, Michx.
 1071. *diversifolius*, Barton

POTAMOGETON

1072. pusillus, L.
 1073. pauciflorus, Pursh.
 1074. Niagarensis, Tuckerm.
 1075. compressus, L.
 1076. perfoliatus, L.
 1077. praelongus, Wulf
 1078. lucens, L.
 1079. fuitans, Roth
 1080. natans, L.
 1081. heterophyllus, Schreber

ALISMACEÆ.

TRIGLOCHIN

1082. palustre, L.
 1083. maritimum, L.

SCHEUCHZERIA

1084. palustris, L.

ALISMA

1085. Plantago, L.
 a. Americana, Gray.

ECHINODORUS

1086. subulatus, Engelm.

SAGITTARIA

1087. variabilis, Engelm.

HYDROCHARIDACEÆ.

LIMNOBIUM

1088. Spongia, Richard.

ANACHARIS

1089. Canadensis, Planchou.

VALLISNERIA

1090. spiralis, L.

ORCHIDACEÆ.

ORCHIS

1091. spectabilis, L.

GYMNADENIA

1092. tridentata, Lindl.

PLATANThERA

1093. obtusata, Lindl.
 1094. rotundifolia, Lindl.
 1095. orbiculata, Lindl.
 1096. Hookeri, Lindl.
 1097. bracteata, Torr.
 1098. hyperborea, Lindl.
 1099. dilatata, Lindl.
 1100. flava, Gray.
 1101. ciliaris, Lindl.
 1102. blephariglottis, Lindl.
 1103. leucophæa, Nutt.
 1104. Jacera, Gray.
 1105. psychodes, Gray
 1106. fimbriata, Lindl.

GOODYERA

1107. repens, R. Br.

GOODYERA

1108. pubescens, R. Br.
 1109. decipiens, R. Br.

SPIRANTHES

1110. gracilis, Bigelow.
 1111. latifolia, Torr.
 1112. cernua, Richard.
 1113. graminea, Torr.

LISTERA

1114. cordata, R. Br.
 1115. convallarioides, Hook.

ARETHUSA

1116. bulbosa, L.

POGONIA

1117. ophioglossoides, Nutt.
 1118. pendula, Lindl.

CALOPOGON

1119. pulchellus, R. Br.

CALYPSO

1120. borealis, Salisb.

MICROSTYLIS

1121. monophyllos, Lindl.
 1122. ophioglossoides, Nutt.

LIPARIS

1123. liliifolia, Richard.
 1124. Lœselii, Richard.

CORALLORHIZA

1125. innata, R. Br.
 1126. multiflora, Nutt.
 1127. odontorhiza, Nutt.
 1128. Macraei, Gray.

APLECTRUM

1129. hyemale, Nutt.

CYPRIPIEDIUM

1130. pubescens, Willd.
 1131. parviflorum, Salisb.
 1132. candidum, Muhl.
 1133. spectabile, Swartz.
 1134. acaule, Ait.
 1135. arietinum, R. Br.

AMARYLLIDACEÆ.

HYPOXIS

1136. erecta, L.

IRIDACEÆ.

IRIS

1137. versicolor, L.
 1138. Virginica, L.
 1139. lacustris, Nutt.

SISYRYNCHIUM

1140. Bermudiana, L.

DIOSCOREACEÆ.

DIOSCOREA

1141. villosa, L.

SMILACEÆ.

SMILAX

1142. rotundifolia, L.
1143. glauca, Walt.
1144. hispida, Muhl.
1145. herbacea, L.

TRILLIUM

1146. cernuum, L.
1147. erectum, L.
 b. album., Gray.
1148. grandiflorum, Salisb.
1149. nivale, Riddell.
1150. erythrocarpum, Michx.

MEDEOLA

1151. Virginica, L.

LILIACEÆ.

POLYGONATUM

1152. biflorum, Ell.
1153. giganteum, Dietrich.

SMILACINA

1154. racemosa, Desf.
1155. stellata, Desf.
1156. trifolia, Desf.
1157. bifolia, Ker.

CONVALLARIA

1158. *majalis*, L.

CLINTONIA

1159. borealis, Raf.

ALLIUM

1160. tricocceum, Ait.
1161. Schœnoprasum, L.
1162. Canadense, Kalm.

LILIUM

1163. Philadelphicum, L.
1164. Canadense, L.
1165. superbum, L.

ERYTHRONIUM

1166. Americanum, Smith.

MELANTHACEÆ.

UVULARIA

1167. grandiflora, Smith.
1168. perfoliata, L.
1169. sessilifolia, L.

PROSARTES

1170. lanuginosa, Don.

STREPTOPUS

1171. amplexifolius, DC.
1172. roseus, Michx

ZYGADENUS

1173. glaucus, Nutt.

VERATRUM

1174. viride, L.

CHAMÆLIRIUM

1175. luteum, Gray.

TOFIELDIA

1176. glutinosa, Willd.
1177. pubens, Ait.
1178. palustris, Hudson.

JUNCACEÆ.

LUCEOLA

1179. pilosa, Willd.
1180. parviflora, Desv.
 a. melanocarpa, E. Meyer.
1181. campestris, DC.
1182. arcuata, Meyer.
1183. spicata, Desvaux.

JUNCUS

1184. effusus, L.
1185. filiformis, L.
1186. Balticus, Willd.
1187. setaceus, Rostk.
1188. scirpoides, Lam.
1189. paradoxus, E. Meyer.
1190. acuminatus, Michx.
1191. articulatus, L.
1192. nodosus, L.
1193. Conradi, Tuckerm.
1194. marginatus, Rostk.
1195. trifidus, L.
1196. tenuis, Willd.
1197. Greenii, Oakes & Tuckerm.
1198. bulbosus, L.
1199. bufonius, L.
1200. fluitans, Michx.

PONTEDERIACEÆ.

PONTEDERIA

1201. cordata, L.

SCHOLLERA

1202. graminea, Willd.

XYRIDACEÆ.

XYRIS

1203. bulbosa, Kunth.

ERIOCAULONACEÆ.

ERIOCAULON

1204. septangulare, Withering.

CYPERACEÆ.

CYPERUS

1205. flavescens, L.
1206. diandrus, Torr.
1207. Nutalii, Torr.
1208. Engelmanni, Steud.
1209. strigosus, L.

CYPERUS.

1210. *inflexus*, Muhl.
 1211. *phymatodes*, Muhl.
 1212. *Schweinitzii*, Torr.
 1213. *filiculmis*, Vahl.

DULICHIMUM

1214. *spathaceum*, Pers.

ELEOCHARIS

1215. *obtusa*, Schultes.
 1216. *olivacea*, Torr.
 1217. *palustris*, R. Br.
 1218. *rostellata*, Torr.
 1219. *intermedia*, Schultes.
 1220. *tenuis*, Schultes.
 1221. *compressa*, Sullivant.
 1222. *acicularis*, R. Br.

SCIRPUS

1223. *cæspitosus*, L.
 1224. *pungens*, Vahl.
 1225. *Torreyi*, Olney.
 1226. *lacustris*, L.
 1227. *maritimus*, L.
 1228. *sylvaticus*, L.
 1229. *paucifolius*, Smith.
 1230. *Eriophorum*, Michx.

ERIOPHORUM

1231. *alpinum*, L.
 1232. *vaginatum*, L.
 1233. *Virginicum*, L.
 1234. *polystachyon*, L.
 1235. *gracile*, Koch.
 1236. *russeolum*, Torr and Gray.

RHYNCHOSPORA

1237. *fusca*, Røem. & Schult.
 1238. *alba*, Vahl.
 1239. *capillacea*, Torr.
 1240. *glomerata*, Vahl.

CLADIUM

1241. *mariscoides*, Torr.

SCLERIA

1242. *verticillata*, Muhl.

CAREX

1243. *gynocrates*, Wormsk.
 1244. *exilis*, Dewey.
 1245. *scirpoidea*, Michx.
 1246. *capitata*, L.
 1247. *pauciflora*, Lightf.
 1248. *polytrichodes*, Muhl.
 1249. *Willdenovii*, Schk.
 1250. *Backii*, Boott.
 1251. *bromoides*, Schk.
 1252. *siccata*, Dewey.
 1253. *Sartwellii*, Dewey.
 1254. *teretiuscula*, Good.
 b. major, Gray.
 1255. *decomposita*, Muhl.
 1256. *vulpinoidea*, Michx.
 1257. *Orus-corvi*, Shuttleworth.

CAREX

1258. *stipata*, Muhl.
 1259. *vulpina*, L.
 1260. *sparganioides*, Muhl.
 1261. *cephalophora*, Muhl.
 1262. *Muhlenbergii*, Schk.
 1263. *rosea*, Schk.
 b. radiata, Dewey.
 1264. *retroflexa*, Muhl.
 1265. *chordorhiza*, Ehrh.
 1266. *tenella*, Schk.
 1267. *trisperma*, Dewey.
 1268. *tenuiflora*, Wahl.
 1269. *cahescens*, L.
 1270. *vitiilis*, Fries.
 1271. *Deweyana*, Schw.
 1272. *stellulata*, Good.
 1273. *sychocephala*, Carey
 1274. *rigida*, Boott.
 1275. *scoparia*, Schk.
 1276. *lagopodioides*, Schk.
 1277. *adusta*, Boott.
 1278. *festucea*, Schk.
 1279. *straminea*, Schk.
 1280. *Liddoni*, Boott.
 1281. *torta*, Boott.
 1282. *vulgaris*, Fries.
 1283. *aperta*, Boott.
 1284. *stricta*, Lam.
 1285. *aquatilis*, Wahl.
 1286. *lenticularis*, Michx.
 1287. *salina*, Wahl.
 1288. *maritima*, Vahl.
 1289. *crinita*, Lam.
 1290. *limosa*, L.
 1291. *irrigua*, Smith.
 1292. *Buxbaumii*, Wahl.
 1293. *Vahlilii*, Schk.
 a. elata, Gray.
 1294. *atrata*, L.
 1295. *aurea*, Nutt.
 1296. *livida*, Willd.
 1297. *tetanica*, Schk.
 1298. *Crawei*, Dewey.
 1299. *granularis*, Muhl.
 1300. *pallescens*, L.
 1301. *conoidea*, Schk.
 1302. *grisea*, Wahl.
 1303. *formosa*, Dewey.
 1304. *gracillima*, Schw.
 1305. *virescens*, Muhl.
 1306. *triceps*, Michx.
 1307. *plantaginea*, Lam.
 1308. *platyphylla*, Carey.
 1309. *digitalis*, Willd.
 1310. *laxiflora*, Lam.
 1311. *oligocarpa*, Schk.
 1312. *Hitchcockiana*, Dewey.

CAREX

1313. eburnea, Boott.
 1314. pedunculata, Muhl.
 1315. vaginata, Tansch.
 1316. umbellata, Schk.
 1317. Nova-Angliae, Schw.
 1318. Pennsylvanica, Lam.
 1319. varia, Muhl.
 1320. Richardsonii, R. Br.
 1321. pubescens, Muhl.
 1322. miliacea, Muhl.
 1323. scabrata, Schw.
 1324. arctata, Boott.
 1325. debilis, Michx.
 1326. capillaris, L.
 1327. flexilis, Rudge.
 1328. flava, L.
 1329. Ederi, Ehrh.
 1330. filiformis, L.
 1331. lanuginosa, Michx.
 1332. vestita, Willd.
 1333. Houghtonii, Torr.
 1334. striata, Michx.
 1335. lacustris, Willd.
 1336. aristata, R. Br.
 1337. trichocarpa, Muhl.
 1338. comosa, Boott.
 1339. Pseudo-Cyperus, L.
 1340. mirata, Dewey.
 1341. hystericina, Willd.
 1342. tentaculata, Muhl.
 1343. intumescens, Rudge.
 1344. Canadensis, Dew.
 1345. folliculata, L.
 1346. rostrata, Michx.
 1347. subulata, Michx.
 1348. lupulina, Muhl.
 1349. squarrosa, L.
 1350. Macounii, Dew.
 1351. retrorsa, Schw.
 1352. Bellavilla, Dew.
 1353. Schweinitzii, Dewey.
 1354. vesicaria, L.
 1355. Vaseyi, Dewey.
 1356. monile, Tuckerm.
 1357. ampullacea, Good.
 1358. Hartii, Dewey.
 1359. cylindrica, Schw.
 1360. bullata, Schk.
 1361. oligosperma, Michx.
 1362. longirostris, Torr.
 1363. bicolor, All.

GRAMINACEÆ.

LEERSIA

1364. oryzoides, Swartz.
 1365. Virginica, Willd.

ZIZANIA

1366. aquatica, L.
 1367. fluitans, Michx.

ALOPECURUS

1368. geniculatus, L.
 1369. aristulatus, Michx.

PHLEUM

1370. pratense, L.
 1371. alpinum, L.

VILFA

1372. vaginæflora, Torr.

SPOROBOLUS

1373. heterolepsis, Gray.
 1374. cryptandrus, Gray

AGROSTIS

1375. perennans, Tuckerm.
 1376. scabra, Willd.
 1377. vulgaris, With.
 1378. alba, L.

CINNA

1379. arundinacea, L.
 b. pendula, Gray.

MUHLENBERGIA.

1380. glomerata, Trin.
 1381. Mexicana, Trin.
 1382. sylvatica, Torr. & Gr.
 1383. Willdenovii, Trin.
 1384. capillaris, Kunth

BRACHYELYTRUM

1385. aristatum, Beauv.

CALAMAGROSTIS

1386. Canadensis, Beauv.
 1387. coarctata, Torr.
 1388. longifolia, Hook.
 1389. arenaria, Roth.

ORYZOPSIS

1390. melanocarpa, Muhl.
 1391. asperifolia, Michx.
 1392. Canadensis, Torr.

STIPA

1393. Richardsonii, Link.
 1394. avenacea, L.

SPARTINA

1395. cynosuroides, Willd.
 1396. polystachya, Willd.
 1397. juncea, Willd.

BOUPELOUA

1398. curtispindula, Gray.

CYNODON

1399. Dactylon, Pers.

GRAPHEPHORUM

1400. melicoides, Beauv.
 b. major, Gray.

DACTYLIS

1401. glomerata, L.

KELERIA

1402. cristata, Pers.

EATONIA

1403. obtusata, Gray.
1404. Pennsylvanica, Gray.

GLYCERIA

1405. Canadensis, Trin.
1406. obtusa, Trin.
1407. elongata, Trin.
1408. nervata, Trin.
1409. pallida, Trin.
1410. aquatica, Smith.
1411. fluitans, R. Br.
1412. acutiflora, Torr.
1413. maritima, Wahl.

BRIZOPYRUM

1414. spicatum, Hook

POA

1415. annua, L.
1416. laxa, Hænke.
1417. alpina, L.
1418. brevifolia, Muhl.
1419. flexuosa, Mubl.
1420. alsodes, Gray.
1421. debilis, Torr.
1422. serotina, Ehrh.
1423. nemoralis, L.
1424. *trivialis*, L.
1425. pratensis, L.
1426. compressa, L.

ERAGROSTIS

1427. reptans, Nees.

BRIZA

1428. *media*, L.

FESTUCA

1429. tenella, Willd.
1430. ovina, L.
 b. *duriuscula*, Gray.
1431. elatior, L.
1432. nutans, Willd.

BROMUS

1433. *secalinus*, L.
1434. Kalmii, Gray.
1435. ciliatus, L.

PHRAGMITES

1436. communis, Trin

LOLIUM

1437. *perenne*, L.

TRITICUM

1438. repens, L.
1439. caninum, L.
1440. *dasystachyum*, Gray.
1441. ——— nov. sp.

HORDEUM

1442. jubatum, L.

ELYMUS

1443. Virginicus, L.
1444. Canadensis, L.
1445. europaeus, L.
1446. mollis, Trin.

GYMNOSTICHUM

1447. *Hystrix*, Schreb.

AIRA

1448. flexuosa, L.
1449. caespitosa, L.
1450. atropurpurea, Wahl.

DANTHONIA

1451. spicata, Beauv.

TRisetum

1452. subspicatum, Beauv
 a. *molle*, Gray.

AVENA

1453. striata, Michx.

HOLCUS

1454. lanatus, L.

HIEROCHLOA

1455. borealis, Roem. & Schultes.
1456. alpina, Roem. & Schultes.

ANTHOXANTHUM

1457. *odoratum*, L.

PHALARIS

1458. arundinacea, L.

MILIUM

1459. effusum, L.

PANICUM

1460. filiforme, L.
1461. *glabrum*, Gaudin.
1462. *sanguinale*, L.
1463. agrostoides, Spreng
1464. capillare, L.
1465. autumnale, Boşç
1466. virgatum, L.
1467. latifolium, L.
1468. clandestinum, L.
1469. microcarpon, Muhl.
1470. xanthophysum, Gray.
1471. dichotomum, L.
1472. depauperatum, Muhl.
1473. *Crus-galli*, L.

SETARIA

1474. *verticillata*, Beauv.
1475. *glauca*, Beauv.
1476. *viridis*, Beauv.

CENCHRUS

1477. tribuloides, L.

ANDROPOGON

1478. furcatus, Muhl.
1479. scoparius, Michx.
1480. argenteus, Ell.

SORGHUM

1481. nutans, Gray.

EQUISETACEÆ.

EQUISETUM

1482. arvense, L.
1483. eburneum, Schreber.
1484. pratense, Ehrh.

EQUISETUM

- 1485. sylvaticum, L.
- 1486. limosum, L.
- 1487. palustre, L.
- 1488. robustum, Braun.
- 1489. hyemale, L.
- 1490. variegatum, Schleicher.
- 1491. scirpoides, Michx.

POLYPODIACEÆ.

POLYPODIUM.

- 1492. vulgare, L.
- 1493. Phegopteris, L.
- 1494. hexagonopterum, Michx.
- 1495. Dryopteris, L.

STRUTHIOPTERIS

- 1496. Germanica, Willd.

ALLOSORUS

- 1497. acrostichoides, Gray.
- 1498. gracilis, Presl.
- 1499. atropurpureus, Kunze.

PTERIS.

- 1500. aquilina, L.

ADIANTUM

- 1501. pedatum, L.

WOODWARDIA

- 1502. Virginica, Willd.

CAMPTOSORUS

- 1503. rhizophyllum, Link.

SCOLOPENDRIUM

- 1504. vulgare, L.

ASPLENIUM

- 1505. Trichomanes, L.
- 1506. ebeneum, Ait.
- 1507. viride, Hudson.
- 1508. angustifolium, Michx.
- 1509. thelypteroides, Michx.
- 1510. Filix-fœmina, R. Br.

DICKSONIA

- 1511. punctilobula, Kunze.

WOODSIA.

- 1512. Ilvensis, R. Br.
- 1513. glabella, R. Br.

CYSTOPTERIS.

- 1514. hyperhorea, R. Br.
- 1515. bulbifera, Bernh.
- 1516. fragilis, Bernh.

ASPIDIUM.

- 1517. Thelypteris, Swartz.
- 1518. Novæboracense, Wild.

ASPIDIUM

- 1519. spinulosum, Swartz.
 - b. dilatatum, Gray.
 - c. Boottii, Gray.
- 1520. cristatum, Swartz.
- 1521. Goldianum, Hook.
- 1522. marginale, Swartz.
- 1523. fragrans, Swartz.
- 1524. aculeatum, Swartz.
 - a. Braunii, Koch.
- 1525. acrostichoides, Swartz.
- 1526. Lonchitis, Spreng

ONOCLEA

- 1527. sensibilis, L.

OSMUNDA

- 1528. regalis, L.
 - b. spectabilis, Gray.
- 1529. Claytoniana, L.
- 1530. cinnamomea, L.

OPHIOGLOSSACEÆ.

BOTRYCHIUM

- 1531. lunarioides, Swartz.
- 1532. obliquum, Muhl.
- 1533. dissectum, Muhl.
- 1534. Virginicum, Swartz
 - b. simplex, Gray
- 1535. lunaria, Swartz.

OPHIOGLOSSUM

- 1536. vulgatum, L.

LYCOPODIACEÆ.

LYCOPODIUM

- 1537. lucidulum, Michx.
- 1538. Selago, L.
- 1539. inundatum, L.
- 1540. annotinum, L.
- 1541. dendroideum, Michx.
- 1542. clavatum, L.
- 1543. complanatum, L.

SELAGINELLA

- 1544. selaginoides, Gray.
- 1545. rupestris, Spring.
- 1546. apus, Spring.

MARSILEACEÆ.

ISOETES

- 1547. lacustris, L.

SPECIES OF DOUBTFUL OCCURRENCE.

- Thalictrum clavatum*, D.C.
Trautvetteria palmata, Fisch & Meyer.
Magnolia acuminata, L.
Asmina triloba, Dunal.
Nuphar lutea, R. Br.
Cardamine bellidifolia, L.
Subularia aquatica, L.
Alsine juniperina, L.
Oxalisviolacea, L.
Rhamnus lanceolatus, Pursh.
Polygala cruciata, L.
Desmodium lineatum, D.C.
Cladrastis tinctoria, Raf
Cercis Canadensis, L.
Poterium Sanguisorba, L.
Geum Peckii, Pursh.
Potentilla paradoxa, Nutt.
P. frigida, Vill.
(Enothera fruticosa), L.
Heuchera villosa, Michx.
Hydrocotyle interrupta, Muhl.
Mikania scandens, L.
Aster spectabilis, Ait.
A. blandius, Pursh.
Erigeron alpinum, Hook.
E. hysopifolium, Michx.
Solidago virgata, Michx.
S. Ohioensis, Riddell.
S. elliptica, Ait.
S. pilosa, Walt.
S. lateriflora, L.
Chrysopsis falcata, Ell.
Gnaphalium sylvaticum, L.
Circium pumilum, Spreng.
Vaccinium stamineum, L.
Clethra alnifolia, L.
Azalia nudiflora, L.
Rhododendron maximum, L.
Ilex opaca, Ait.
I. glabra, Gray.
Pentstemon gracilis, Nutt.
Gratiola pilosa, Michx.
Pedicularis resupinata, Willd.
Trichostema dichotomum, L.
Salvia lyrata, L.
Phlox maculata, L.
Ipomæa pandurata, L.
Cuscuta compacta, Juss.
Sabbatia stellaris, Pursh.
S. gracilis, Salisb.
Pleurogyne rotata, Griesb.
Asclepias incarnata, L.
Gonolobus hirsutus, Michx.
Fagus sylvatica, L.
Orontium aquaticum, L.
Ruppia maritima, L.
Potamogeton crispum, L.
Alisma natans, Willd.
Pogonia verticillata, Nutt.
Allium stellatum, Nutt.
Lilium Catesbæi, Walt.
Erythronium albidum, Nutt.
Zygadenus glaberrimus, Michx.
Stenanthium angustifolium, Gray.
Eriocaulon decangulare, L.
Eleocharis equisetoides, Torr.
Carex panicea, L.
Eragrostis capillaris, Nees.
Trisetum palustre, Torr.
Panicum pauciflorum, Ell.
Polypodium Robertianum, Hoffm.
Asplenium marinum, L.
A. Ruta-muraria, L.
A. septentrionale, Hoffm.
Aspidium Filix-mas, Swartz.
Lygodium palmatum, Swartz.
Botrychium lanceolatum, Watt.
Azolla Caroliniana, Willd.
Marsilea mucronata, L.
Salvinia natans, L.

OCCASIONALLY ESCAPED FROM CULTIVATION ABOUT DWELLINGS, &c.

- | | |
|-----------------------------|----------------------------------|
| Berberis vulgaris, L. | Centaurea nigra, L. |
| Hesperis matricularis, L. | Cnicus benedictus, L. |
| Sinapis alba, L. | Lampsana communis, L. |
| Draba, muralis, L. | Tragopogon pratense, L. |
| Lepidium ruderales, L. | Sonchus palustris, L. |
| Raphanus raphanistrum, L. | Veronica Chamædrys, L. |
| Silene Armeria, L. | V trphyllos, L. |
| Lychnis flos-cuculi, L. | Pedicularis palustris, L. |
| L. vespertina, Sibth. | Satureia hortensis, L. |
| Scleranthus annuus, L. | Melissa officinalis, L. |
| Portulacca grandiflora, L. | Lamium purpureum, L. |
| Malva Moschata, L. | Ipomea purpurea, Lam. |
| Abutilon Avicennæ, Gaertn. | Erythraea Centaurium, Pers. |
| Hibiscus Trionum, L. | Ligustrum vulgare, L. |
| Linum usitatissimum, L. | Blitum Bonus-Henricus, Reichenb. |
| Crataegus oxycantha, L. | Chenopodium Botrys, L. |
| Sedum Telephium, L. | Euphorbia Cyparissias, L. |
| S acre, L. | E Peplus, L. |
| Scabiosa atropurpurea, L. | Tralescantia Virginica, L. |
| Anthemis arvensis, L. | Eragrostis poæoides, Beauv. |
| Achillea Ptarmica, L. | Phalaris Canariensis, L. |
| Artemisia Absinthium, L. | |



PREPARING FOR THE PRESS,

*Dedicated, by permission, to the REV. PROF. HINCKS, F.L.S., F.Z.S.
&c., &c.*

H A N D B O O K

OF

THE CANADIAN FLORA,

A DESCRIPTION

OF THE

FLOWERING PLANTS AND FERNS

OF CANADA,

BY

THE REV. J. HUBBERT, M. A., PH. D.

FELLOW OF THE BOTANICAL SOCIETY OF CANADA,
MEM. ENT. SOC. CAN., MEM. CAN. INST.,
COR. MEM. ESSEX INSTITUTE,
PROF. OF NATURAL HIST. IN
St. FRANCIS COLLEGE,
RICHMOND, C. E.,
ETC., ETC., ETC.

WITH PLATES

ILLUSTRATING THE GENERA OF THE GRASSES AND FERNS.

FLORA OF CANADA,

In one Octavo vol., containing about 600 pages.

The object of this work is to furnish to Amateurs and Students of CANADIAN BOTANY, a Manual of the Science, so far combining the characters of fulness and scientific precision, with freedom from unnecessary technicality, that a person with no previous knowledge of the subject, and provided only with the "HANDBOOK" and a good pocket-lens, may easily become acquainted with the names, properties, and habitats of our native and naturalized Plants.

CONTENTS.

- I. Introductory sketch of structural and systematic Botany.
- II. List of Authorities referred to in this work, with the residence, profession, &c., of each.
- III. Artificial Analytical Key.
- IV. Scientific arrangement of the Classes, Alliances, and Natural Orders of Plants.
- V. Description of the Classes, Orders, Genera, Species, and important Varieties of Canadian Plants, with their general Geographical range, distribution in Canada, uses, period of Flowering, Synonymy when several well-known names are in use for the same plant, Analytical Tables for facilitating reference to sub-groups, &c. &c.
- VI. Index of Technical Terms.
- VII. Index of Latin and English names.



