

大馬心物語

式卷

國立中央圖書館藏

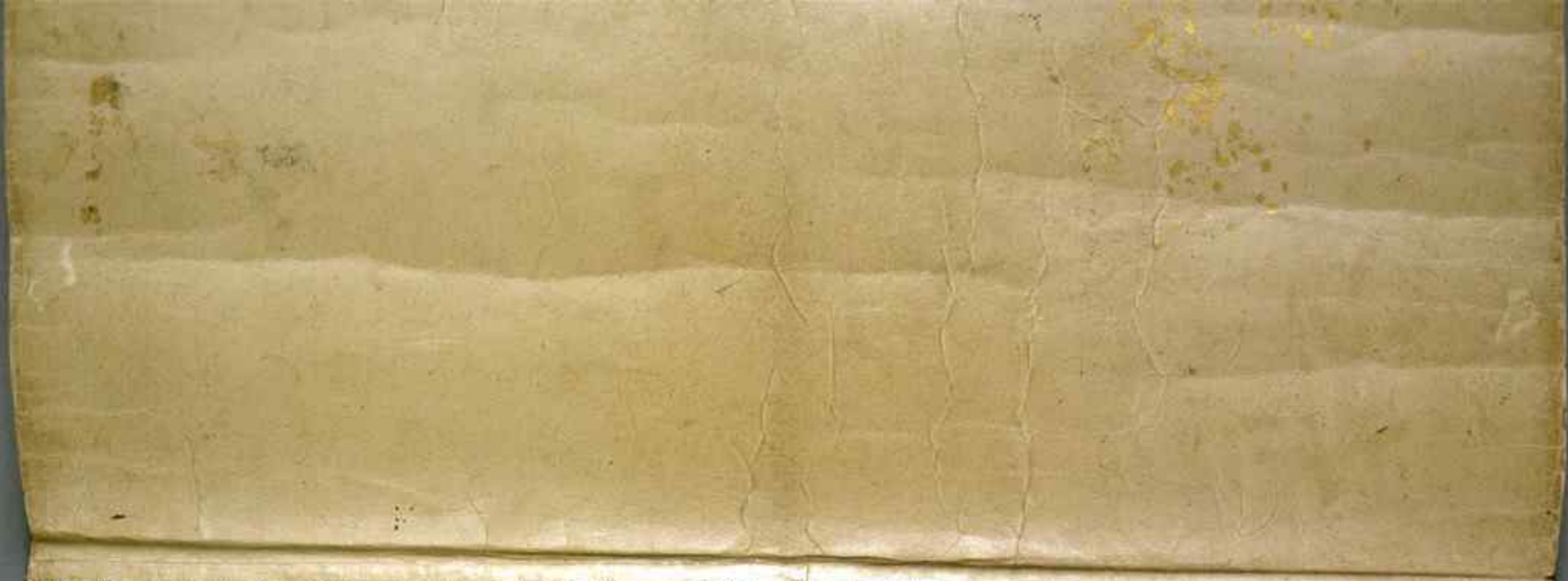
WA 31

(1)

17

62. 2. 19

86#65581



紅印

| |
|-------|
| WA 31 |
| (1) |
| 17 |

62.2.19
86w65581





Handwritten text in cursive script, likely a signature or title, located at the bottom of the book cover.

Additional handwritten text in cursive script, partially visible at the very bottom edge of the book cover.

Handwritten Japanese text in cursive (sōsho) style, written vertically on aged paper. The text is a continuous passage, likely a letter or a section of a book, consisting of approximately 25 lines of characters. The ink is dark, and the paper shows signs of age, including yellowing and some staining.

Handwritten text in cursive script, likely a letter or document, written on aged, yellowed paper. The text is arranged in approximately 20 horizontal lines, with some lines appearing to be part of a list or series of entries. The characters are dark and fluid, characteristic of traditional Chinese calligraphy. The paper shows signs of wear, including creases and discoloration.



山崎天来

天来山人

Handwritten text in a cursive script, likely a historical document or manuscript. The text is written on aged, yellowed paper and is oriented vertically. The script is dense and flowing, characteristic of a historical cursive style. The text is arranged in approximately 25 lines, with some lines appearing to be part of a list or a series of entries. The ink is dark, and the paper shows signs of wear, including discoloration and some faint markings.

Handwritten text in a cursive script, likely a form of shorthand or a specific dialect. The text is arranged in approximately 25 horizontal lines across the page. The characters are highly stylized and interconnected, characteristic of shorthand systems. The paper shows signs of age, including yellowing and some staining.



Handwritten Japanese calligraphy in cursive style (sōsho) at the bottom of the page.

Handwritten text in a cursive script, likely a form of shorthand or a specific dialect. The text is arranged in approximately 20 horizontal lines across the page. The script is highly stylized and difficult to decipher without a key. The paper is aged and shows signs of wear, including creases and discoloration.

Handwritten text in Arabic script, likely a manuscript or letter, written on aged, yellowed paper. The text is arranged in approximately 25 horizontal lines, flowing from right to left. The script is cursive and highly stylized, characteristic of classical Arabic calligraphy. The paper shows signs of wear, including creases and discoloration.

Handwritten text in a cursive script, likely a letter or document, written on aged, yellowed paper. The text is arranged in approximately 25 horizontal lines, flowing from right to left. The ink is dark, and the paper shows signs of wear, including creases and discoloration. The script is highly stylized and difficult to decipher without a key.

Handwritten text in cursive script, top edge of the page.

Handwritten text in cursive script, first line of the main body.

Handwritten text in cursive script, second line.

Handwritten text in cursive script, third line.

Handwritten text in cursive script, fourth line.

Handwritten text in cursive script, fifth line.

Handwritten text in cursive script, sixth line.

Handwritten text in cursive script, seventh line.

Handwritten text in cursive script, eighth line.

Handwritten text in cursive script, ninth line.

Handwritten text in cursive script, tenth line.

Handwritten text in cursive script, eleventh line.

Handwritten text in cursive script, twelfth line.

Handwritten text in cursive script, thirteenth line.

Handwritten text in cursive script, fourteenth line.

Handwritten text in cursive script, fifteenth line.

Handwritten text in cursive script, sixteenth line.

Handwritten text in cursive script, seventeenth line.

Handwritten text in cursive script, eighteenth line.

Handwritten text in cursive script, nineteenth line.

Handwritten text in cursive script, twentieth line.

Handwritten text in cursive script, bottom edge of the page.

Handwritten text in a cursive script, likely a form of Chinese calligraphy, arranged in approximately 20 horizontal lines. The text is written in black ink on aged, yellowish paper. The characters are highly stylized and connected, characteristic of cursive script. The text is oriented vertically on the page.



Handwritten text at the top of the page, likely a title or inscription in a cursive script.



Handwritten text at the bottom of the page, likely a signature or inscription in a cursive script.

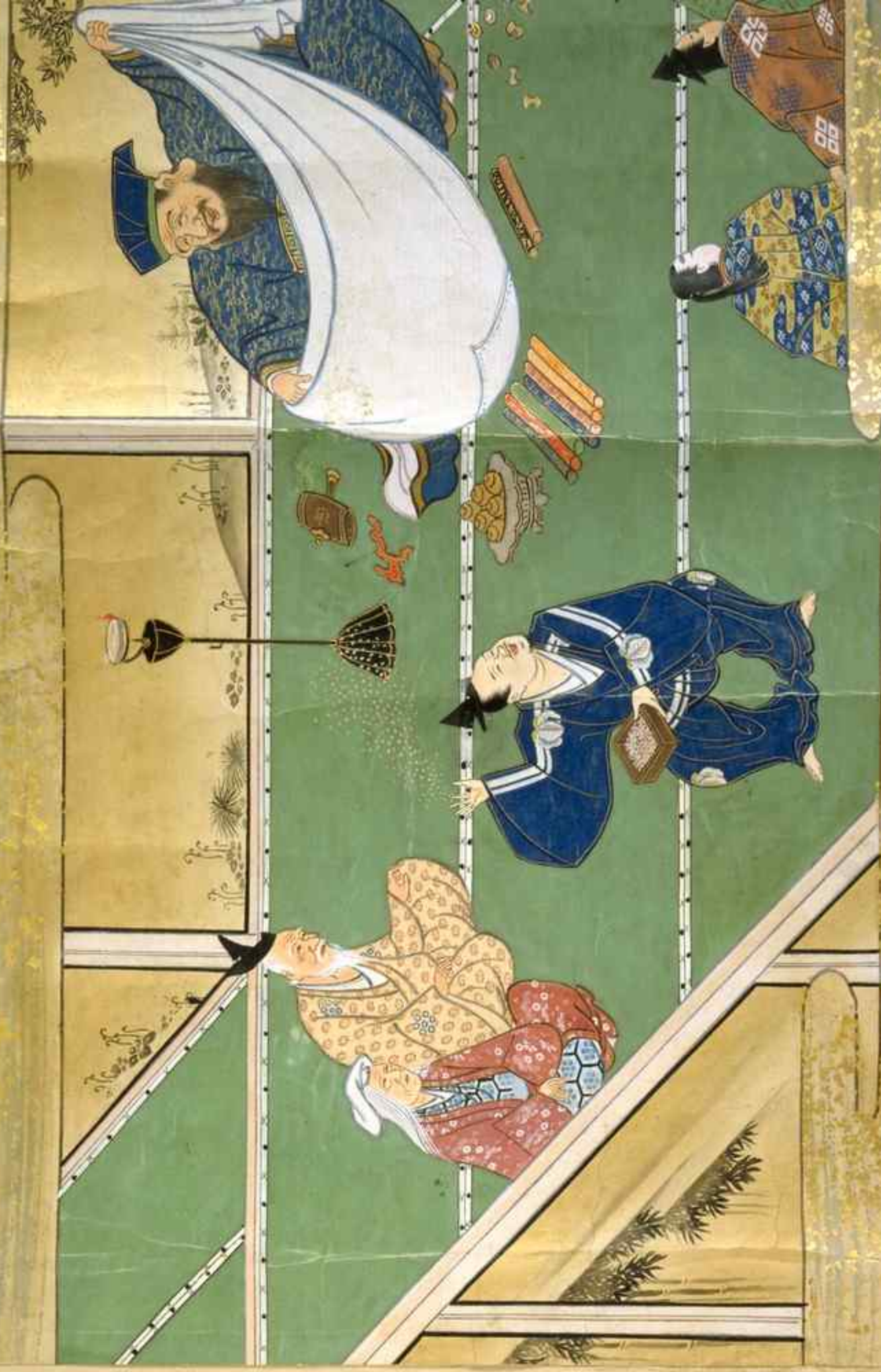
Handwritten text in Arabic script, likely a religious or philosophical treatise, written in a cursive style on aged, yellowed paper. The text is arranged in approximately 25 horizontal lines, with some lines containing multiple words or phrases. The script is dense and fluid, characteristic of classical Arabic calligraphy. The paper shows signs of age, including creases and discoloration. The text is written in black ink on a light-colored, textured paper.

草書詩文





Handwritten Japanese text in cursive (sōsho) style, likely a calligraphic inscription or a poem. The text is written on aged, yellowish paper and is oriented vertically, reading from right to left. The characters are fluid and expressive, characteristic of the cursive style.

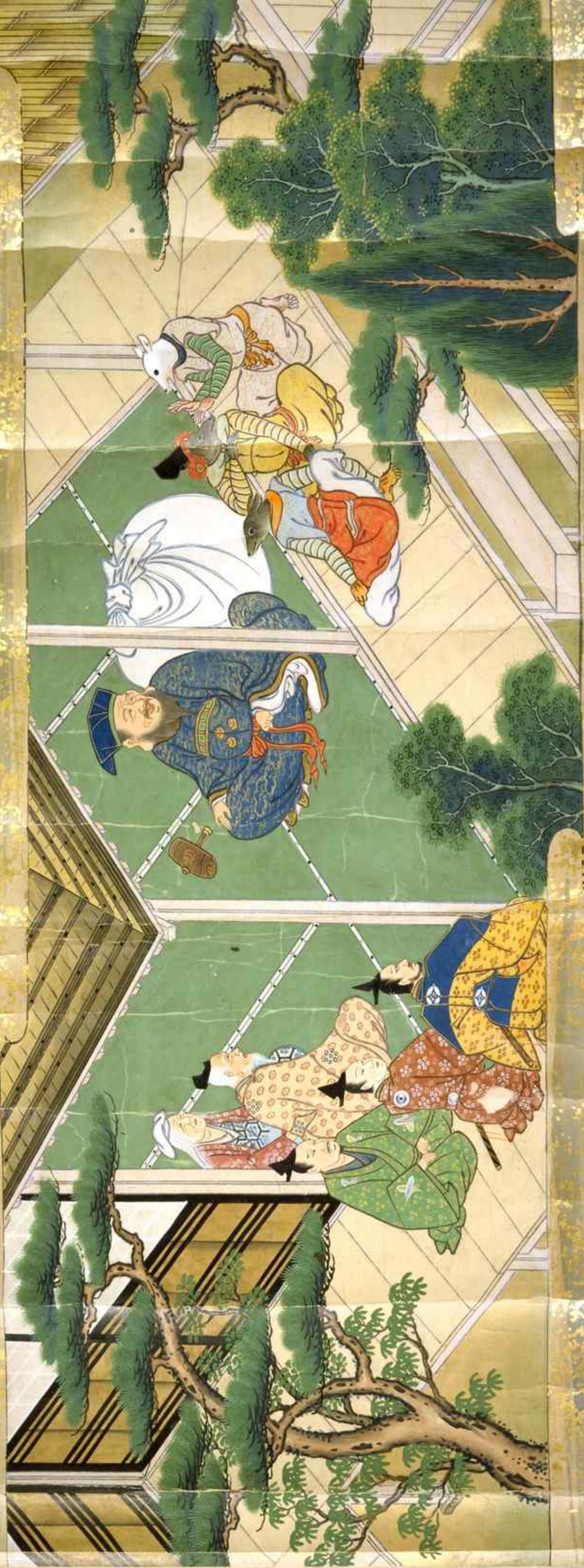


Handwritten text in a cursive script, likely a form of Chinese calligraphy, arranged in approximately 15 horizontal lines across the upper portion of the page.

Handwritten text in a cursive script, likely a signature or a specific title, located below the main body of text.







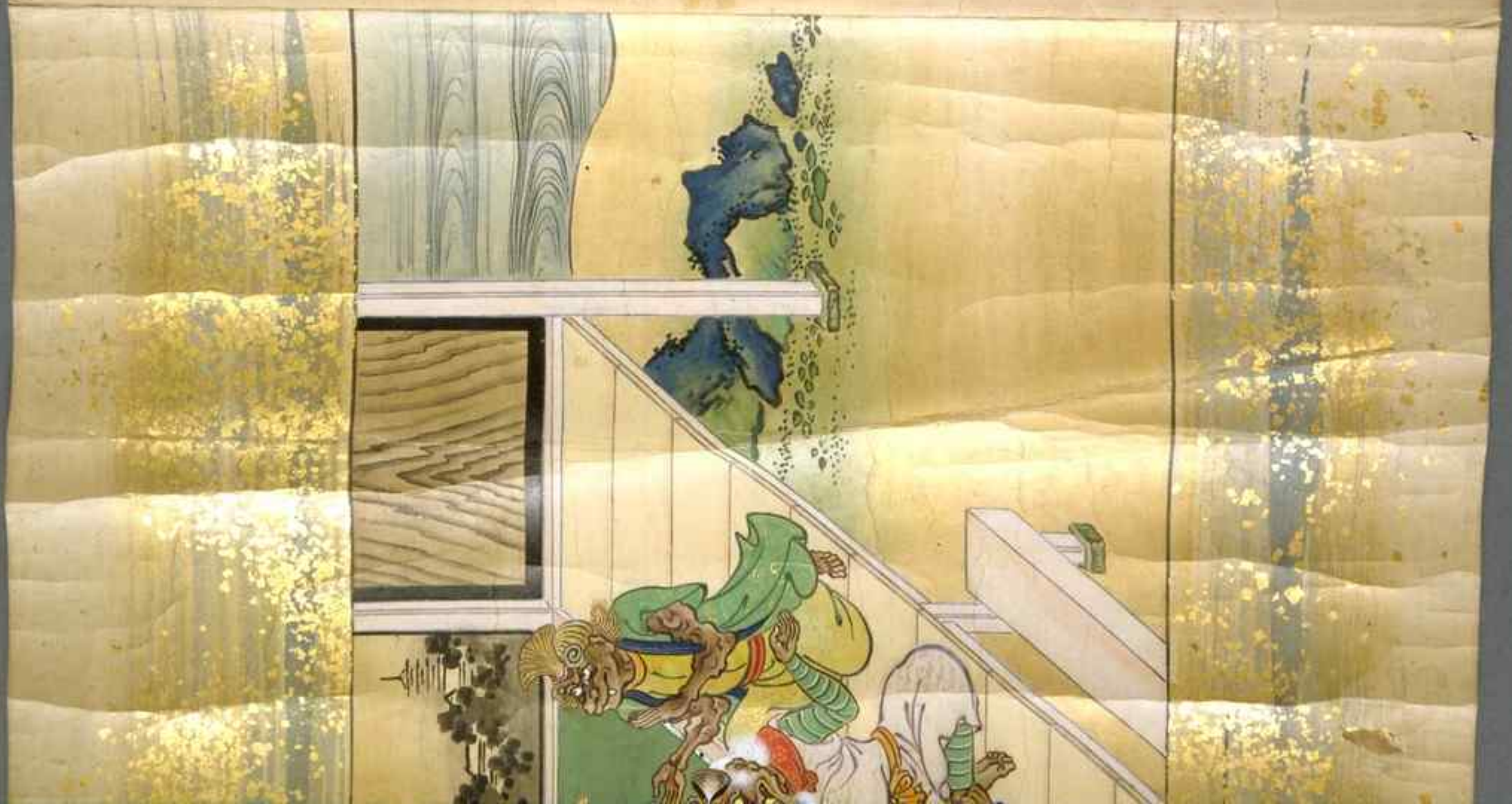
江戸時代 浮世草子 巻之三

Handwritten text in Arabic script, consisting of approximately 20 lines of dense, cursive writing. The text is written on aged, yellowed paper with some water damage or staining visible.



Handwritten text in a cursive script, likely a letter or document, written on aged, yellowed paper. The text is arranged in approximately 12 lines, starting from the top left and moving downwards. The script is dense and fluid, characteristic of traditional East Asian calligraphy.

Handwritten text in a cursive script, continuing from the previous block. It consists of approximately 4 lines of text, positioned in the lower middle section of the page.





Handwritten text at the bottom of the page, likely a signature or title, written in black ink.

Handwritten text in a cursive script, likely Persian or Urdu, covering the majority of the page. The text is arranged in approximately 18 horizontal lines, written from right to left. The script is highly stylized and fluid, characteristic of the 'Nasta'liq' style. The ink is dark brown or black, set against a light-colored, aged paper background.

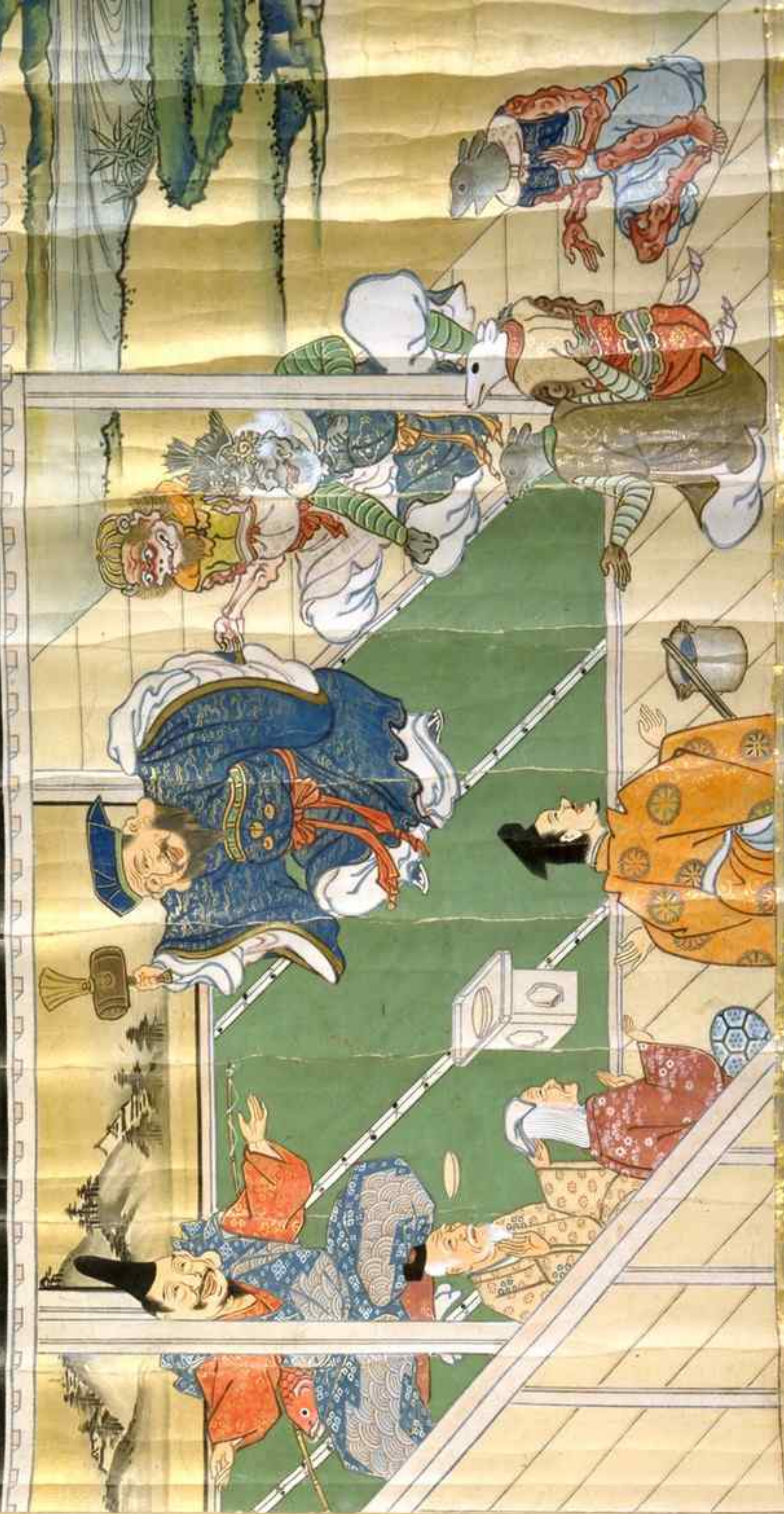


Handwritten text in a cursive script, likely a form of Arabic or Persian calligraphy, covering the upper portion of the page. The text is arranged in approximately 12 horizontal lines, though some characters are partially obscured by the paper's folds. The script is fluid and characteristic of historical Islamic manuscripts.



Y. H. M. S. C.





國立國會圖書館藏書

WA31

(2)

17

62. 2. 19
86W65582



Red rectangular stamp with Chinese characters.

| |
|-------|
| WA 31 |
| (2) |
| 17 |

62.2.19
86w65582





Handwritten text in black ink on a white strip at the bottom of the page, written in a cursive style.

三三三三三三三三三三
のののののののののの
一三三三三三三三三三
三三三三三三三三三三
中中中中中中中中中中
三三三三三三三三三三
三三三三三三三三三三
三三三三三三三三三三
三三三三三三三三三三
三三三三三三三三三三
三三三三三三三三三三
三三三三三三三三三三
三三三三三三三三三三
三三三三三三三三三三
三三三三三三三三三三
三三三三三三三三三三

三三三



Ukiyo-e



Handwritten text in a cursive script, likely a historical document or manuscript. The text is written in dark ink on aged, yellowed paper. The script is highly stylized and difficult to decipher. The text is arranged in approximately 25 horizontal lines, with some lines appearing to be part of a list or a series of entries. The paper shows signs of wear, including creases and discoloration.

Handwritten text in cursive script, likely a list or a series of entries, written vertically on aged paper. The characters are highly stylized and difficult to decipher precisely, but appear to be organized into approximately 20 distinct lines or entries. The text is written in black ink on a light-colored, textured paper that shows signs of age and wear.

此乃...
...
...
...
...
...

如...
...





Handwritten text in cursive script (草書), likely a calligraphic transcription of a poem or prose. The text is arranged in approximately 10 horizontal lines across the page.

Handwritten text in cursive script (草書), continuing the transcription from the upper section. It consists of approximately 6 horizontal lines.



Handwritten text in cursive script, likely a poem or a letter, written on aged paper. The text is arranged in approximately 12 horizontal lines, reading from right to left. The characters are fluid and connected, characteristic of the 'caoshu' style. The paper shows signs of age, including yellowing and some staining.





Handwritten Japanese text in cursive style, likely a signature or title, located at the bottom of the page.

Handwritten text in a cursive script, likely Chinese or Japanese, written on aged, yellowed paper. The text is arranged in approximately 20 horizontal lines, flowing from right to left. The characters are highly stylized and interconnected, characteristic of cursive calligraphy. The paper shows signs of wear, including creases and discoloration.

Handwritten Chinese text in cursive script (caoshu), arranged in vertical columns. The text is written on aged, yellowish paper with a faint floral pattern. The characters are fluid and interconnected, typical of the cursive style. The text is organized into two main sections, each containing eight vertical columns of writing.



It is a scene from the play 'The Tale of Genji'.



Handwritten Chinese text in cursive script (caoshu), consisting of approximately 20 lines of characters. The text is written on aged, yellowed paper with visible water damage and staining. The characters are highly stylized and difficult to decipher without a specialist in cursive calligraphy. The text appears to be a continuous passage, possibly a letter or a short treatise, written in a personal or semi-formal style.

Handwritten Japanese text in cursive style (sōsho), likely a title or a chapter heading, written vertically on the top half of the page.







Handwritten Chinese text in cursive script (caoshu), arranged in approximately 14 vertical columns. The text is written on aged, yellowish paper with a faint floral pattern. The characters are fluid and connected, typical of the cursive style.

Handwritten text at the bottom of the page, likely a signature or date.

Handwritten text line.

Handwritten text line.

Handwritten text line.

Handwritten text line.

Handwritten text line.

Handwritten text line.

Handwritten text line.

Handwritten text line.

Handwritten text line.

Handwritten text line.

Handwritten text line.

Handwritten text line.

Handwritten text line.

Handwritten text line.

Handwritten text line.

Handwritten text line.

Handwritten text line.

Handwritten text line.

Handwritten text line.

Handwritten text line.

Handwritten text at the top of the page.

Handwritten text in Arabic script, likely a religious or philosophical treatise, written in a cursive style. The text is arranged in approximately 12 horizontal lines across the top half of the page.

Handwritten text in Arabic script, continuing the text from the top half, written in a cursive style. The text is arranged in approximately 12 horizontal lines across the bottom half of the page.

Handwritten Japanese text at the top of the page, likely a title or inscription, written in cursive (sōsho).



Handwritten Japanese text at the bottom of the page, likely a signature or publisher's mark, written in cursive (sōsho).

Handwritten cursive script, line 1

Handwritten cursive script, line 2

Handwritten cursive script, line 3

Handwritten cursive script, line 4

Handwritten cursive script, line 5

Handwritten cursive script, line 6

Handwritten cursive script, line 7

Handwritten cursive script, line 8

Handwritten cursive script, line 9

Handwritten cursive script, line 10

Handwritten cursive script, line 11

Handwritten cursive script, line 12

Handwritten cursive script, line 13

Handwritten cursive script, line 14

Handwritten cursive script, line 15

Handwritten cursive script, line 16

Handwritten cursive script, line 17

Handwritten cursive script, line 18

Handwritten cursive script, line 19

Handwritten cursive script, line 20

Handwritten cursive script, line 21

Handwritten text in cursive script, likely a letter or document, written on aged, yellowed paper. The text is arranged in approximately 15 lines, though some are partially obscured or cut off at the top and bottom edges of the page. The ink is dark, and the paper shows signs of wear, including creases and discoloration.



Handwritten Japanese text at the top of the page, likely a title or inscription.





傳
任
古
廣
字
筆
詞
書
立
本
一
派
之
源
也

大正四年一月一日

古
筆
道
