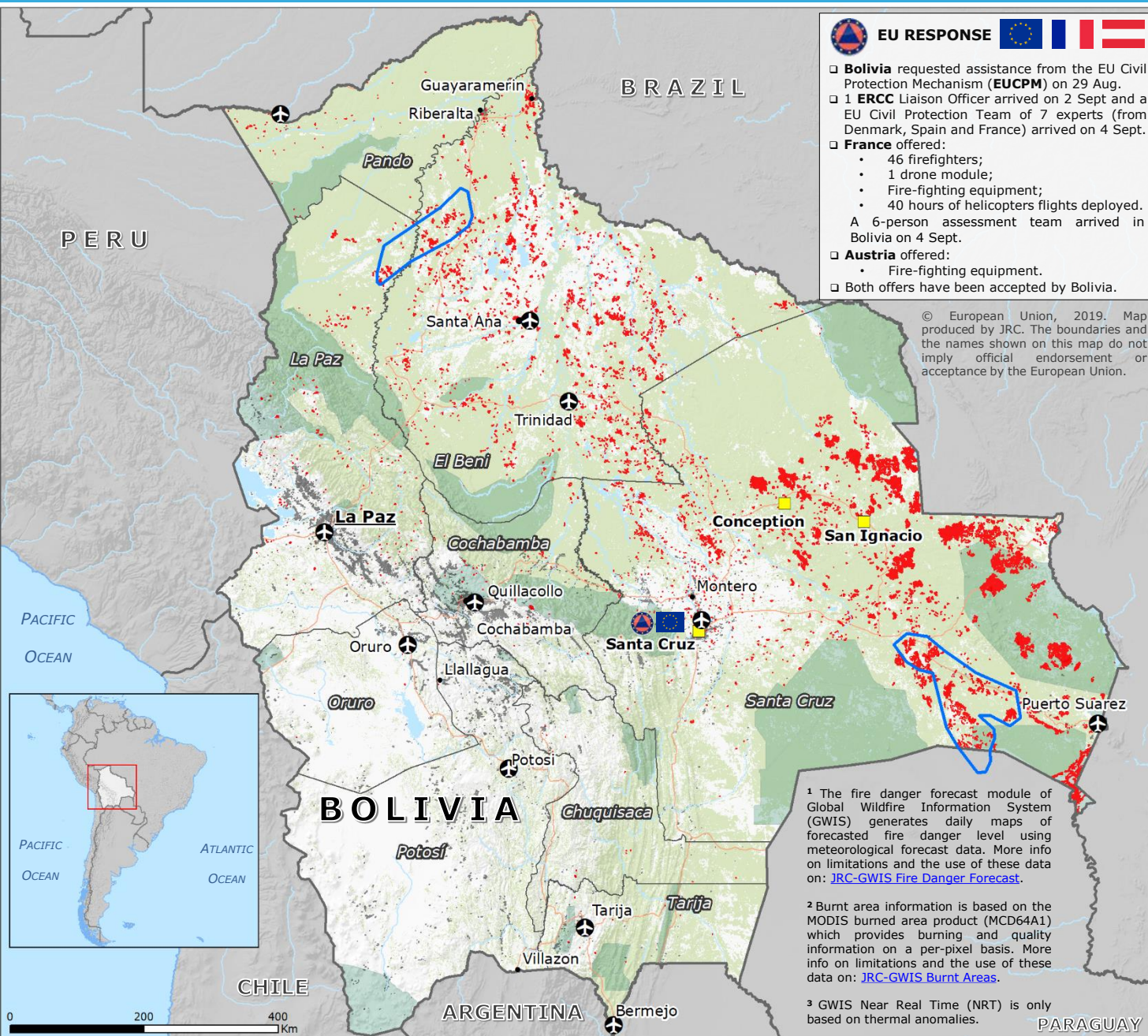


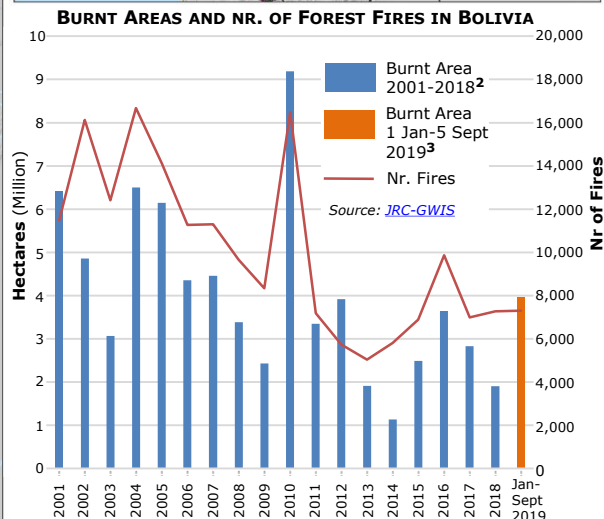
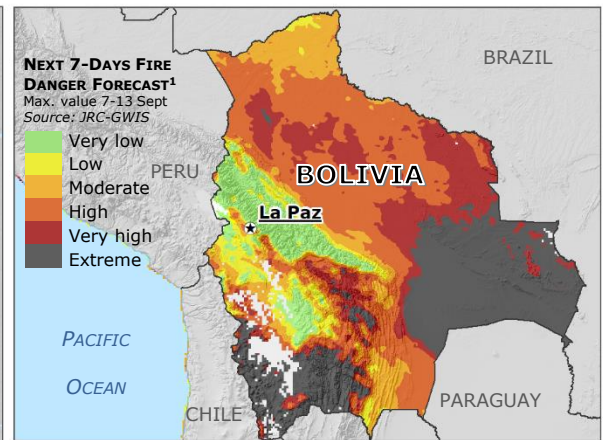
Bolivia | Forest Fires



EU RESPONSE

- **Bolivia** requested assistance from the EU Civil Protection Mechanism (EUCPM) on 29 Aug.
- 1 **ERCC** Liaison Officer arrived on 2 Sept and a EU Civil Protection Team of 7 experts (from Denmark, Spain and France) arrived on 4 Sept.
- **France** offered:
 - 46 firefighters;
 - 1 drone module;
 - Fire-fighting equipment;
 - 40 hours of helicopters flights deployed.
 A 6-person assessment team arrived in Bolivia on 4 Sept.
- **Austria** offered:
 - Fire-fighting equipment.
- Both offers have been accepted by Bolivia.

© European Union, 2019. Map produced by JRC. The boundaries and the names shown on this map do not imply official endorsement or acceptance by the European Union.



¹ The fire danger forecast module of Global Wildfire Information System (GWIS) generates daily maps of forecasted fire danger level using meteorological forecast data. More info on limitations and the use of these data on: [JRC-GWIS Fire Danger Forecast](#).

² Burnt area information is based on the MODIS burned area product (MCD64A1) which provides burning and quality information on a per-pixel basis. More info on limitations and the use of these data on: [JRC-GWIS Burnt Areas](#).

³ GWIS Near Real Time (NRT) is only based on thermal anomalies.

GLOBAL WILDFIRE INFORMATION SYSTEM (GWIS) Forests
 Source: [FAO](#)

NEAR REAL TIME³ DETECTION

Burnt areas 1 Aug - 5 Sept

Protected areas
 Sources: [GeoBolivia](#), [SERNAP Bolivia](#)

COPERNICUS EMSR383
 Activation date 24 Aug

Area of Interest (AoI)

Built-up areas
 Source: [JRC-GHSL](#)

Coordination hub

Main roads

Main airport

Department boundary