

RIT Outlines Master Plan for Future; \$85 Million Capital Campaign

In the most important announcement since the move to a new campus, President M. Richard Rose this week outlined a comprehensive master plan and \$85 million capital campaign designed to further RIT's national leadership in high technology and career education. Funded by the campaign, "Access to the Future," the master plan is designed to enhance student life and overall institutional excellence.

The plan calls for construction of five new buildings for instruction and research; increased scholarships, endowed professorships and equipment; an addition to the existing library; creation of new campus access roads and parking spaces and further refinement of campus landscaping.

"With the commitment of more than \$54 million dollars, we are thrilled with the progress of the campaign," said Bruce Bates, chairman of RIT's Board of Trustees. "We realize that we have a long way to go to meet this challenging and important goal that will enhance the Institute's educational advantage."

Rose added that "the financial commitment from corporations, foundations, alumni, parents and other friends will maintain RIT's philosophy of 'education with a purpose' and our excellent ability to attract quality students and faculty." Rose also said, "Our master plan reinforces RIT's belief in the future of Rochester."

In addition, he outlined the creation of a research and development park to be built on 90 acres of land on the northeast corner of the campus. The park will be the first phase of a complex that is expected to ring the RIT campus with complementary companies that can utilize cooperative education students and faculty consultants in areas related to their fields of expertise.

"Our far-reaching plans outline concrete steps for the next 10 years that will further solidify RIT's reputation as a national leader in quality career education and as a center for high-technology," Rose said. "The construction of campus buildings is exciting in itself, but when viewed in conjunction with the creation of a research and development complex and the combined economic and academic impact on the Northeast and the nation, it is clearly a project of major significance."

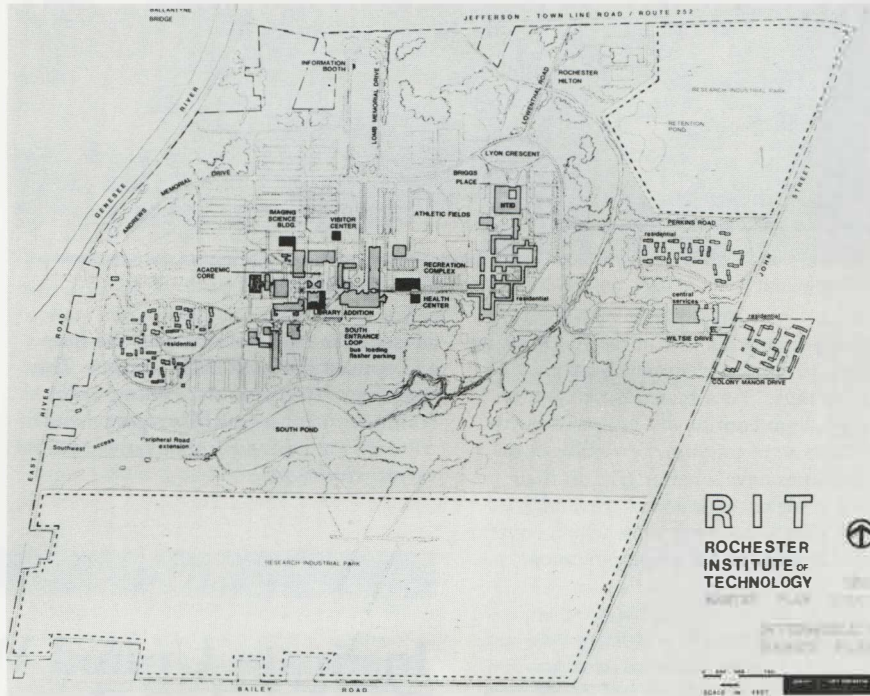
He explained that the R & D complex is expected to serve as a catalyst in attracting offices, laboratories and high tech industries to the Rochester area.

The timetable for implementation of the components of the master plan will vary. "The microelectronic and computer engineering building will be dedicated this fall," Rose stated, "and at the same time we will be moving ahead with contracts for the R & D complex and, in the near future, ground breaking for the library addition."

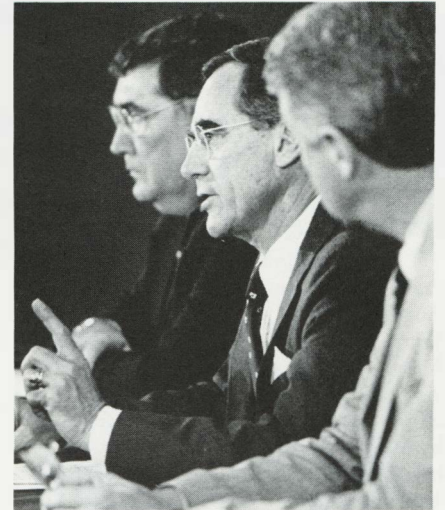
The campaign will fund:

- A \$9.0 million Campus Life Center comprised of two buildings, a Physical Education and Intramural Sports Center and a Student Health Service and Counseling Center. The proposed center will help alleviate overcrowding in recreational facilities that were designed for a campus population about two-thirds the current full-time enrollment of 10,000. The center will be built east of existing athletic facilities.

- A \$6.5 million addition to the Wallace Memorial Library—nearly doubling current space. The original library also was designed for a student population of 6,500. The addition of approximately 65,000 square feet will provide increased shelf space, study and seating areas, periodical/research space,



The intermediate plan for the campus shows the location of new buildings (in black) and south entrance loop road. The RIT Research and Development Park on the northeast corner and southern part of the campus is part of the long-range plan. Above right, and below, Dr. Rose explains the master plan to the Rochester media at the July 12 news conference. Above, with Dr. Rose, are Dr. C.J. Young, vice president for Development and Bruce Bates.



"As volunteers, the trustees and many other people will be involved in the solicitation of funds to support this master plan." — Bruce Bates, chairman, RIT Board of Trustees

archive/special collection areas and meeting rooms and expansion of RIT's pace-setting computerized system of information storage and retrieval.

- A \$2.5 million Bausch & Lomb Visitor Center funded by a gift from Bausch & Lomb Inc. It will provide for centralized operation of RIT's offices of Admissions, Financial Aid, and Cooperative Education and Placement. The building will offer outstanding facilities for introducing prospective students and their parents to RIT, convenient and well-designed areas to better serve currently enrolled students and first-rate interview rooms and recruitment facilities for the many corporations who visit RIT for co-op and senior job recruitment. The facility will be located on the north-central part of campus, to the west of the glass-enclosed Information Booth.

- Scheduled for dedication this fall, the new Center for Microelectronic and Computer Engineering. This offers a world-class facility that will serve as a complete center for undergraduate education and graduate research in the design and fabrication of integrated circuits. The 57,000-square-foot facility and its program will cost \$11.5 million, more than half of which has already been provided by industry.

- The Center for Imaging Science facility, the primary goal of an \$8.5 million portion of the campaign. The facility will help RIT strengthen its position as the national educational leader in capturing, storing, retrieving, processing, displaying, printing and extracting information from images. Planned to be constructed as part of the \$23 million multi-phase Center for Microelectronic Engineering and Imaging Science, the building will provide space for imaging science laboratories, classrooms and faculty offices.



- \$1.5 million for the construction of new laboratory facilities in the College of Science. This project will allow faculty from a wide range of disciplines to work together on research and broaden the interface between industry and RIT in the realm of molecular science.

- Scholarships supported by a \$9 million endowment. Availability of financial aid in the form of scholarships, loans and work study is increasingly important to families of children choosing to attend quality universities such as RIT. Increased scholarship support is essential to RIT's achievement of its enrollment objectives.

- \$7 million to fund endowed professorships, the highest honor that can be conferred by an institution to its faculty. The endowed professorships serve to recognize outstanding teachers and attract first-rate faculty talent to the Institute.

- A \$4.5 million Physical Facilities Endowment Fund to ensure the quality of the proposed new facilities by financing on-going maintenance and operational costs.

- Equipment donations and funds to purchase equipment, totaling \$15 million, which will continue to keep RIT on the cutting edge of new technology. The nature of RIT's high technology programs demands the most up-to-date equipment, which is extraordinarily costly. The Institute has always enjoyed excellent support from industry in providing the most modern resources.

continued on page 2

Institute Plan Strengthens National Role...

continued from page 1

● \$10 million targeted as the goal for the RIT annual giving program, dedicated to increasing scholarship funds and unrestricted support. Tuition covers only three fourths of the cost of an RIT education, and proceeds from endowment funds and annual giving offset the difference.

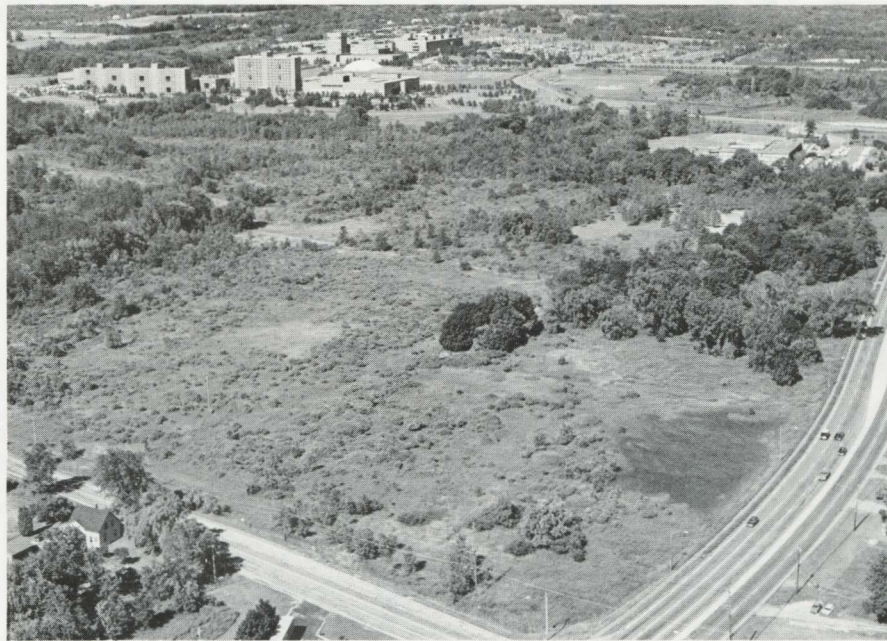
In addition, the campus master plan calls for a number of changes in the current 1,300-acre campus: new parking areas and the construction of access roads along the perimeter of the academic areas to divert automobile traffic from areas used primarily by pedestrians.

Other plans call for landscaping across the campus and creation of two artificial lakes, one in the R & D park area and one to the south of the academic facilities.

Trustee Burton August Chairs Capital Campaign

The \$85 million capital campaign is chaired by community leader Burton S. August, an RIT trustee and founder and former president of Monro Muffler/Brake. According to Dr. C. J. Young, RIT vice president for Development, "the efforts already committed to the campaign by individuals like Burt August are a tribute to the broad range of support the Institute enjoys."

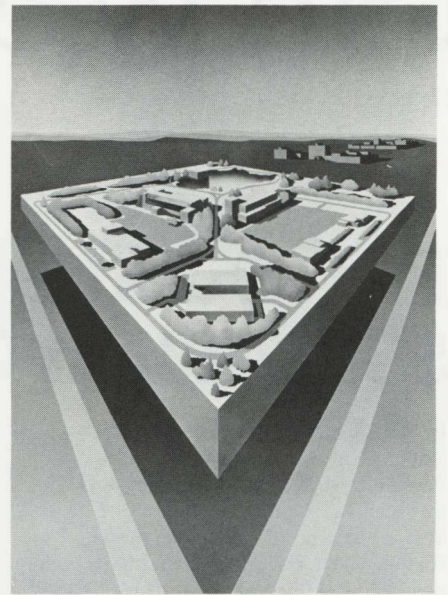
"Companies and individuals are willing to support financially those educational programs they know will meet both present and future needs of the workplace."



The campus from the corner of Jefferson and John Streets, looking southwest: the area in the foreground will be developed as the go-acre RIT Research and Development Park. At right, an artist's conception of the possible site plan.

In discussing his role in the fund-raising efforts, campaign chairman Burton S. August says, "As a businessman and a trustee, I am continually impressed with RIT's sense of mission. Few colleges or universities have a better grip on their place in higher education." He adds, "RIT's academic programs, which cover a broad spectrum, are among the most

advanced in high technologies, the fine and applied arts, and basic sciences. This campaign, 'Access to the Future,' will continue to enhance RIT's regional and national reputation for innovative, quality career education."



Institute United Way Effort Reaches 110 Percent of Goal

It was a proud moment for the entire RIT community, as the Institute's 1986 United Way Campaign reached a record amount. According to Deborah Stendardi, chairperson of RIT's United Way Campaign, the total is more than \$88,000.

"This amount is 110 percent of our 1986 goal and an increase of 16 percent over the 1985 campaign," says Stendardi, director of Government and Community Affairs.

Nearly six out of 10 employees supported the campaign, a significant increase. This year, too, RIT retirees were invited to contribute to the campaign; 33 responded by contributing nearly \$2,000. "We are deeply grateful to our retirees for their support and are very pleased that they have continued to be involved with RIT and the Rochester community in this manner," Stendardi said.

The United Way Run also played a significant role in the success of the campaign, and Computer House was again active in the campaign, this year contributing \$230.

In response to the good news, President M. Richard Rose commented, "The outstanding support of United Way this year is a tribute to the commitment of the RIT community to the Rochester area and the needs of all of its citizens. The support by everyone at RIT makes me very proud to be associated with the Institute."

Stendardi emphasized the contributions of the members of the United Way Steering Committee and the key captains and solicitors, without whose support and dedication, she says, the campaign's success would not have been possible.

This year's campaign included a raffle, which was conducted on May 6. Patricia Seidenberg, Development, was the grand prize winner, who, courtesy of DiMaria Travel, received a luxury weekend at Toronto's Sutton Place along with a dinner/theatre package.

Second prizes went to Billie Eisenman, Financial Aid, who won a weekend at the Holiday Inn-Rochester South, including dinner for two in the Sazerac Restaurant, and Geraldine Adams, Admissions, whose prize was a weekend at the Rochester Hilton, including dinner or brunch at Truffles Restaurant.

Mary Menard, Admissions, was one of four third-prize recipients, winning dinner for two at Henry's, courtesy of the School of Food, Hotel and Tourism Management. Joan Horton, NTID, won a pair of Bausch & Lomb Rayban sunglasses; Maureen

Isaac, Admissions, a handcrafted glass paperweight from the School for American Craftsmen; and James Palmer, Electrical Engineering, five rolls of film and free processing from Park Avenue Photo.

Fourth prizes went to Edwin Hoefler, Mathematics, who won a \$25 certificate toward lunch or dinner at Cartwright's Restaurant; Barbara McKee, NTID, dinner for two at the Shanghai Restaurant; Jim Winter, Financial Aid, a certificate for a complete hair styling at Campus Cutters; Adrienne Cali, Financial Aid, the recipient of a gift certificate for one night's lodging at the Quality Inn; Fred Dowaliby, NTID, an RIT sport jacket from the RIT Sportshop; and Jim Proctor, Physical Plant, lunch for two at Clark Dining Room, courtesy of RIT's Food Service.

The raffle was open to all participants in RIT's United Way Campaign who contributed \$13 or more.



During his visit to RIT, President Reagan's former national security adviser, Robert C. McFarlane (right), met with Dr. Thomas Plough, provost and vice president for Academic Affairs, and history and political science faculty members.

Former National Security Chief Meets with Trustees, Faculty

Robert C. McFarlane, former national security adviser to President Reagan and a longtime friend of President Rose, visited campus last week (July 10) to meet with Rose and speak before the Board of Trustees.

McFarlane said he and his wife, Jonda, have a long and deep regard for RIT. "RIT is an innovative center of learning with a level of excellence and a standard that you just don't find at very many learning centers of this country," he said, citing RIT's work in the graphic arts and NTID.

About his visit to Rochester, McFarlane said with a smile, "Anybody who works in Washington always welcomes the chance to get out." He went on to say, "It's hard to imagine a nicer place to visit than Rochester, not just because of its people, but because you find in this corner of New York State some of the greatest imagination, new learning concepts and serious research of benefit to the government that you can find anywhere."

During a news conference, McFarlane said Americans aren't overreacting to

terrorism overseas. "I'm less concerned about terrorism reaching our shores because the objective of the leading centers of terrorism—Libya, Syria and Iran—is to expel the United States from the Middle East. You can do that by attacking us in that area."

"On the other hand, bringing violence to Rochester, Des Moines or the rest of the nation would probably have the effect of creating such outrage as to lead to a greater United States reaction than those countries really want."

McFarlane is currently involved in research on how to deter nuclear conflict through the turn of the century and whether there is a role for greater reliance on defense and less on nuclear weapons. He will submit a report to President Reagan in October.

On the topic of defense spending, "We must spend about 7 percent of our gross national product on defense; that's not an excessive amount. To say we can keep the peace at 7 percent is a real bargain."

Trustees Honor Ezra Hale

The RIT Board of Trustees last week adopted the following resolution:

"It is with great sadness and a sense of deep loss that the Rochester Institute of Technology Board of Trustees records the passing of Ezra A. Hale. Having carried on a tradition of RIT trustee involvement that his father began in 1885, Ezra provided wisdom to his trustee dedication for 32 years, having served as an Honorary Trustee since 1967. He was a guiding force that helped to lead the Institute to its present campus.

A progressive thinker, his insights, wit and genuine interest in the Rochester community significantly advanced many organizations. Determined of spirit, he nevertheless remained consistent in his insistence on excellence and what was best for RIT. RIT's Nathaniel Rochester Society recognized the dedication and generosity of this great Rochesterian when it presented its highest honor, the NRS Award in 1976. Ezra then received the RIT Presidential Medallion in 1985—small tributes indeed for one who loved to give of himself to others."

Graphic Arts & Photo Launches Dean Search



Dr. Mark F. Guldin

A nationwide search for a new dean of the College of Graphic Arts and Photography was recently announced by President M. Richard Rose and Dr. Thomas R. Plough, provost and vice president, Academic Affairs. The search became necessary upon the announcement that Dr. Mark F. Guldin, dean of the college for the past five years, had chosen to accept a distinguished professorship of graphic arts communication within the college.

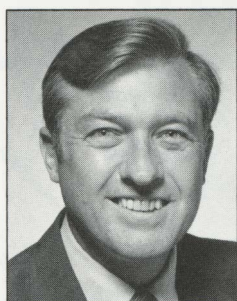
Dr. Robert M. Desmond, who has been interim director of the Center for Imaging Science the past year, has been appointed as interim dean of the college until the new dean is named.

"We are proud that RIT has established such an enviable reputation as the nation's premier center in imaging, printing and photography," Dr. Rose said. "We are excited to begin this search for a world-class dean, an individual who can provide leadership in imaging education that will propel the College of Graphic Arts and Photography into the 21st century."

During the 1987-88 academic year, Dr. Guldin will serve as the Melbert B. Carey Jr. Professor in Graphic Arts. Established in 1969 by the trustees of the Mary Flagler Cary Charitable Trust, the chair memorializes Melbert B. Carey Jr. (1892-1941), former president of Continental Typefounders Association. His personal collection of examples of fine printing provides the core of works in the Cary Library, housed in the School of Printing.

"I have enjoyed tremendously working for the past five years with all of the faculty and staff within the College of Graphic Arts and Photography in my capacity as dean," said Dr. Guldin, who holds a Ph.D. in mass communication from the University of Iowa. "I look forward to continuing my dedication to the betterment of the college and the Institute as a whole."

"The Institute applauds the service and leadership provided by Mark Guldin," Plough said. "During his tenure as director of the School of Printing and more recently as dean of the college, Mark Guldin has been a role model of hard work and dedication to the mission and programs of RIT. An endowed



Dr. Robert M. Desmond

professorship symbolizes excellence in teaching, and we are pleased that Mark, who has a distinguished history of service to RIT as a teacher, has agreed to accept this position for the future."

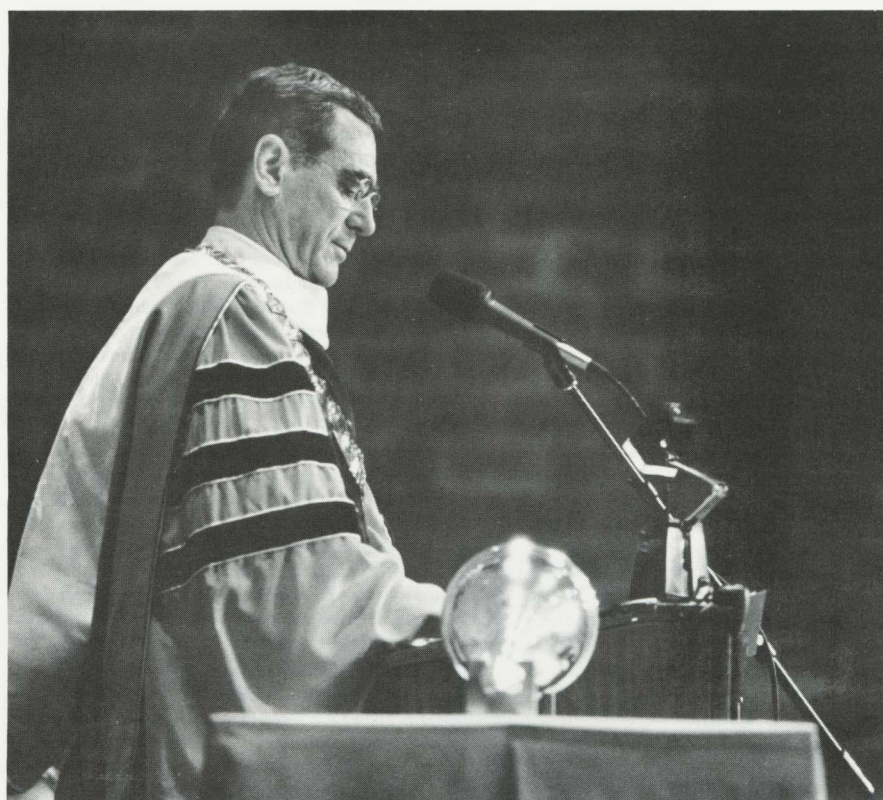
Plough added that Guldin will continue to work closely with Miles Southworth, director of the School of Printing, to develop new aspects of the curriculum. He also will assist Professor Alfred F. Horton, the current Cary Professor, with activities of the Cary Professorship, update and expand his expertise in applied communications technology, continue to work with the RIT Development office, serve on the Search Advisory Group for the new dean, and participate in the ongoing planning for Strategem 1987, a major planning session for graphic arts education involving a high level of input from industry.

The individual being sought as the new dean is expected to be well known on a national or international level for accomplishments in the broad area of applied communications technology. Academic experience will be helpful, but specific knowledge of printing or photography will not be necessary, Plough said.

"This will be a national search," he stated, "perhaps enlisting the help of an outside consultant group to identify leading candidates. Our intent will be to have the new dean identified and hired no later than July 1, 1987. We will endeavor to do whatever is required to find a person whose characteristics and experience meet the needs of the college as we move into the next decade. We are committed to making this appointment as soon as we can, but we will be patient in order to find the caliber of person we need for the future."

Desmond joined RIT in 1970 as an associate professor in the College of Engineering's mechanical engineering department and became chairman of the department two years later. He was promoted to full professor in 1975 and later was executive vice president of the RIT Research Corp.

Dr. Rodney Shaw, an internationally recognized imaging scientist and editor of the *Journal of Imaging Science* since 1977, was recently named director of the Center for Imaging Science. He began his position July 1.



Letter from President

June 3, 1986

To RIT Faculty & Staff,

Several weeks ago, we all gathered together to participate in the 101st Commencement at RIT. I believe that we not only provide a first-rate education to our students, to which each of you contribute, but we also provide the students with a fitting Commencement exercise. The campus was beautiful, the setting was festive and all of your hard work was so apparent.

I want each of you to know how much I appreciate your participation in Commencement and surrounding activities and how well it is done here at RIT. Each of you should take a great deal of satisfaction from being a part of this educational team called Rochester Institute of Technology and in sharing the joy of this capstone event.

Again, thank you,

Computer Science Appoints Chairperson

Evelyn P. Rozanski has been appointed chairperson of the undergraduate computer science department in the School of Computer Science and Technology.

An associate professor, Rozanski will be responsible for undergraduate computer science administration, staff, faculty and curriculum for the bachelor of science degree.

She joined RIT in 1970 after receiving her master's degree in systems and information science at Syracuse University. Her areas of expertise include computer graphics, computer-aided design, computer animation, and data base systems.

Rozanski is professionally affiliated with the IEEE, SIGGRAPH, and the ACM, and has served on a number of RIT faculty committees.

Pay Stubs Get New Look, Offer More Information

In the next week or two the pay stubs will have a new look. This change has been developed to give each employee more information than the old stub held. The new pay stub has year-to-date totals for all deductions and reductions. This should help everyone at tax time, since the total tax deductible items will appear on the last pay stub of the year.

The Payroll Dept. hopes this new format will be beneficial to all employees. If you have any questions regarding the pay stub, call Payroll at 2381 or 2382.



Women's Network Plans Summer Events

The RIT Women's Network has two meetings planned for the summer. On Friday, July 18, the group will meet in the 1829 Room of the College-Alumni Union for informal networking. On Wednesday, August 13, a picnic will be held behind Grace Watson Hall. Both meetings begin at noon.

The network's fall programming kicks off on Thursday, September 25, with a lecture, "Women's Issues," by Jayne Vogan of the SUNY Brockport Counseling Center.

Newly elected members of the network's Board of Directors include Rhona Genzel, president (ESOL Department chairperson, Training Development Center); Mary Ann Erickson, secretary (secretary, Department of Interpreting Services); Mahala Booher, treasurer (assistant to the associate vice president, RIT, and director, Technical Assistance Program, NTID); Marjorie Crum, membership chairperson (assistant media specialist, Instructional Design and Evaluation Department, NTID); Yvonne Fish, program co-chairperson (secretary to the director, School of Engineering Technology); Shirley Gray, program co-chairperson (supervisor, Media Resource Center, IMS); Gaylene Morrill, communications chairperson (communications coordinator, College of Graphic Arts and Photography); Joanne Jacobs (chairperson, Behavioral Science Division, College of Liberal Arts); and Linda Tolan (assistant to the director, School of Printing).

State Legislature Approves \$46 Million TAP Increase

Good news for New York State students! The state has approved a plan to allocate increased funds for the Tuition Assistance Program (TAP), which had been included in the state budget.

The \$46 million increase in TAP will actually provide \$10 million more than was originally allocated in the 1986 budget. The improved TAP schedule will have a significant impact on the amount of undergraduate and graduate TAP awards received by RIT students.

Parvesh Singh, director of Financial Aid, says, "We project that the new TAP bill will increase awards for the 3,835 students currently receiving TAP. We also estimate that an additional 340 students will become eligible to participate in the program."

Under the new schedule, most undergraduate students now receiving TAP will receive an increase of \$255 in benefits. Income eligibility has been extended from \$29,000 to \$32,000, and the minimum TAP award is increased from \$300 to \$350.

TAP benefits for financially independent students will also increase by \$200, and the income eligibility schedule has been adjusted to more accurately reflect student need.

These changes will provide over \$1 million in additional TAP benefits for RIT students, according to Singh.

Deborah Stendar, director of Government and Community Affairs, says, "A special note of thanks goes to Parvesh for all the information and support he provided to this year's campus-wide effort to encourage a TAP increase. Thanks should also go to all the parents, students, faculty and staff who wrote letters to their area legislators. Their efforts were very helpful in obtaining support for the bill."

According to Stendar, Rochester area legislators were very supportive of the TAP increase. "A personal thank-you note to the legislators who supported the bill would be a nice way to let them know that we acknowledge and appreciate their efforts on behalf of our students," she says.

NEWSMAKERS

- **Hilliary Dunn** has been appointed manager of Administrative Mail Services. Her previous experience included mail management for the Dollinger Corporation and the postal service for the government of Jamaica.
- **Joe Nairn** was recently elected vice president for conferences for the College Student Personnel Association of New York State, Inc., and will be responsible for the 1987 Conference in Silver Bay.
- **Albert Paley**, artist-in-residence in the School for American Craftsmen, was featured in "The Art of Metal" in *USAIR Magazine*, June 1986. A photo by **Sue Weisler**, Communications, was included in the article.
- **Eric Bellman**, gallery coordinator in the College of Fine and Applied Arts and art chairman of the College of Continuing Education, juried the Western New York and Ontario 18th annual "Niagara Frontier Art Exhibit" at the Kenan Center in Lockport. The show continues through July 20. Bellman also gave art demonstrations during Rochester's Lilac Festival.
- **Ron Hilton**, chairman of humanities in the College of Continuing Education, has been selected for inclusion in the 1986 edition of *Who's Who in Writers, Editors, and Poets*. Approximately 10,000 individuals, among them some of America's finest authors, are included in the volume.

- **Sue Weisler**, Communications, supplied photos for a story on the Rochester Humane Society that appeared in *New York Air's* May issue of *Skyline*.
- **Dr. William L. Mihal**, associate professor of organizational behavior, has been named chairman of Graduate Business Programs for the College of Business. Mihal, who teaches in the areas of organizational behavior, management, and personnel and human resources management, will assume the position this fall.
- **Dr. Bruce L. Oliver**, professor of accounting, has been named chairman of the Accounting Department of the College of Business. His primary teaching interests are in the areas of financial accounting and auditing at both the graduate and undergraduate levels. Oliver's publications deal with a variety of topics from financial reporting in the small business environment to personal value systems of American managers.
- Five RIT faculty members participated in Science Exploration Days 1986 in May at St. John Fisher College: **James C. Aumer**, College of Science, discussed "Diagnosing Anemias in the Lab"; **J. Richard Garnham**, Science, "Biomedical Computing"; **Judy Newell**, Science, "Nuclear Medicine Technology"; **D. James Wiseman**, Science, "Applicable Mathematics"; and **Andrew Davidhazy**, Graphic Arts and Photography, "High-Speed Photography."

Color Press Dedication Marks Industry Support



A \$2.7 MILLION SNIP...Harris Graphics Corporation and RIT officials cut a four-color ribbon printed for dedication of a \$2.7 million web offset press donated to the T&E Center by Harris Graphics. From left are Herbert Phillips, T&E Center director; Dr. Thomas Plough, provost and vice president, Academic Affairs; James E. Pruitt, chairman and chief executive officer of Harris Graphics; and William Eisner, director of research and development of the T&E Center.

A \$2.7 million web press, donated earlier this year by Harris Graphics Corp. to the Technical and Education (T&E) Center of the Graphic Arts, was dedicated during ceremonies in early June. The M-1000B heatset web offset press will be a focal point for graduate and undergraduate education, for industry seminars, and for research and testing of web offset printing processes and materials.

"RIT has a worldwide reputation as a leader in printing education and as a focal point for research and printing chemistry, physics and engineering, as well as research training of faculty and students," said James E. Pruitt, chairman and chief executive of Harris Graphics, Melbourne, Fla. "We feel that RIT's program has benefitted hundreds of printing companies and highly deserves the industry's support."

Thirteen companies, recognized at the event by William Eisner, director of research and development for the T&E Center, contributed an additional \$300,000 in auxiliary equipment for the press installation.

Also attending the dedication ceremony were the Production Committee members of the Magazine Publishers Association, who were on campus for tours of the School of Printing and several mini seminars conducted by the school and by the T&E Center.

Herbert E. Phillips, director of the T&E Center, stressed that the high-speed, multi-color Harris press will provide new opportunities for both students and industry. Its installation, he said, continues to generate numerous inquiries for information about current research, quality control, testing, seminars and publications.

The Harris Graphics model M-1000B is a state-of-the-art unit with mechanical, electronic and automated features that will enable the T&E Center to conduct pioneering research in developing technology, particularly high-speed on-press control and evaluation systems. Among its uses will be research and testing of blankets, chill rolls, color sequences, dryers, fountain solutions, inks, papers, plates, register, and press management and reporting.

The M-1000B is a 16-page, four-unit press with a top speed of 1,600 feet per minute and a production capability of 50,000 impressions per hour. It replaces a Goss Commercial 38 retired by the T&E Center in February 1986 after 18 years of service.

Campus Safety Offers Ball Tips

With summer softball in full swing, the Campus Safety Office recommends some simple rules that can help players avoid injuries.

"Each season," says Robert Day, public safety administrator, "we receive about five to 10 injury reports from various campus softball teams. Most of these injuries could have been prevented had the individuals taken time to prepare themselves physically."

Day recommends a pre-game warm-up to loosen tense muscles.

"Stretch the hamstrings. A pulled hamstring, the muscle in the back of the thigh, is one of the most common injuries in softball. To stretch the hamstring, put a bat under one knee, lift up, and hold. You should feel the stretch. Focus on it. Relax. Gently push the stretch, and repeat until you feel the muscle loosen."

He also recommends that players stretch the shoulders through a full range of motion.

"Grab a bat, holding it at each end. Gently and slowly reach back over your head as far as you can (don't arch your back), then lean forward, then lean side-

to-side, then move the bat through as many positions as you can think of, always breathing deeply and focusing on feeling your arms and shoulders getting looser and more flexible."

"Above all enjoy the game," Ways says. "If you're not having fun playing softball, something is wrong."

Fall Registration Dates Scheduled

UNDERGRADUATE STUDENTS

- | | |
|---------|---|
| Aug. 4 | Bursar's Office mails Pre-Bill Statements based upon pre-registration course requests |
| Aug. 4 | Class Schedules mailed to home address |
| Aug. 19 | Quarterly Payment due to the Office of the Bursar |
| Aug. 25 | Bursar's Office mails Confirmation of Financial Commitment |
| Sept. 4 | OPEN REGISTRATION—New Undergraduate Students |
| Sept. 5 | OPEN REGISTRATION—Returning Undergraduate Students |

Students need to attend Open Registration to make changes to Class Schedules, pay tuition and fees or register for courses. Students may enter the gymnasium for Open Registration every half-hour, according to the first letter of their last name.

Letter	Time
A, B	3:30 p.m.
C	3:00 p.m.
D, E	2:30
F, G	2:00
H, I	1:30
J, K, L	1:00
M	11:00 a.m.
N, O	10:30
P	10:00
Q, R	9:30
S, T	9:00
U, V, W, X, Y, Z	8:30

- | | |
|----------------------|------------------------------|
| Mail-In Registration | July 7 - Aug. 8 |
| Walk-In Registration | July 7 - Aug. 29 |
| Open Registration | Sept. 3, Gym - Noon - 8 p.m. |

Graduate students may register at the Registrar's Office during walk-in registration, Mon.-Thurs., 9 a.m. - 7:30 p.m., Friday, 9 a.m. - 3:30 p.m. Payment must accompany all registrations. Class Schedule available at the time of registration.

'News & Events' Summer Schedule

The next issue of *News & Events* will be published on August 7. Information to be included in that issue should be sent to RIT Communications by July 28.

BOCES Program Immerses Students In Technology

Junior and senior high school students will sample life on the RIT campus July 13-25 as participants of the Center on Science, Communications and Technology.

The aim of the program is to spark teenagers' interest in science and mathematics and, in turn, encourage them to take the classes required to pursue degrees in technological fields.

The Board of Cooperative Education #1, seven of its component school districts, RIT and area businesses have worked together to launch the program. The students will experience an intensive period of study in a specialized area such as robotics, which will be supplemented by lab work and visits to area industries.

NEWS & EVENTS

Non-Profit Org.
U.S. Postage
PAID
Permit 626
Rochester, N.Y.

Rochester Institute of Technology

One Lomb Memorial Drive
Post Office Box 9887
Rochester, NY 14623-0887

