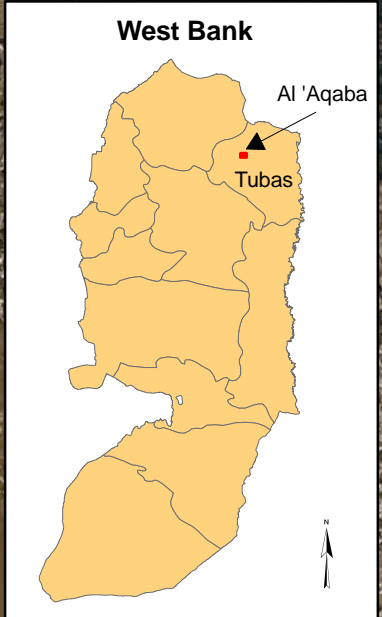
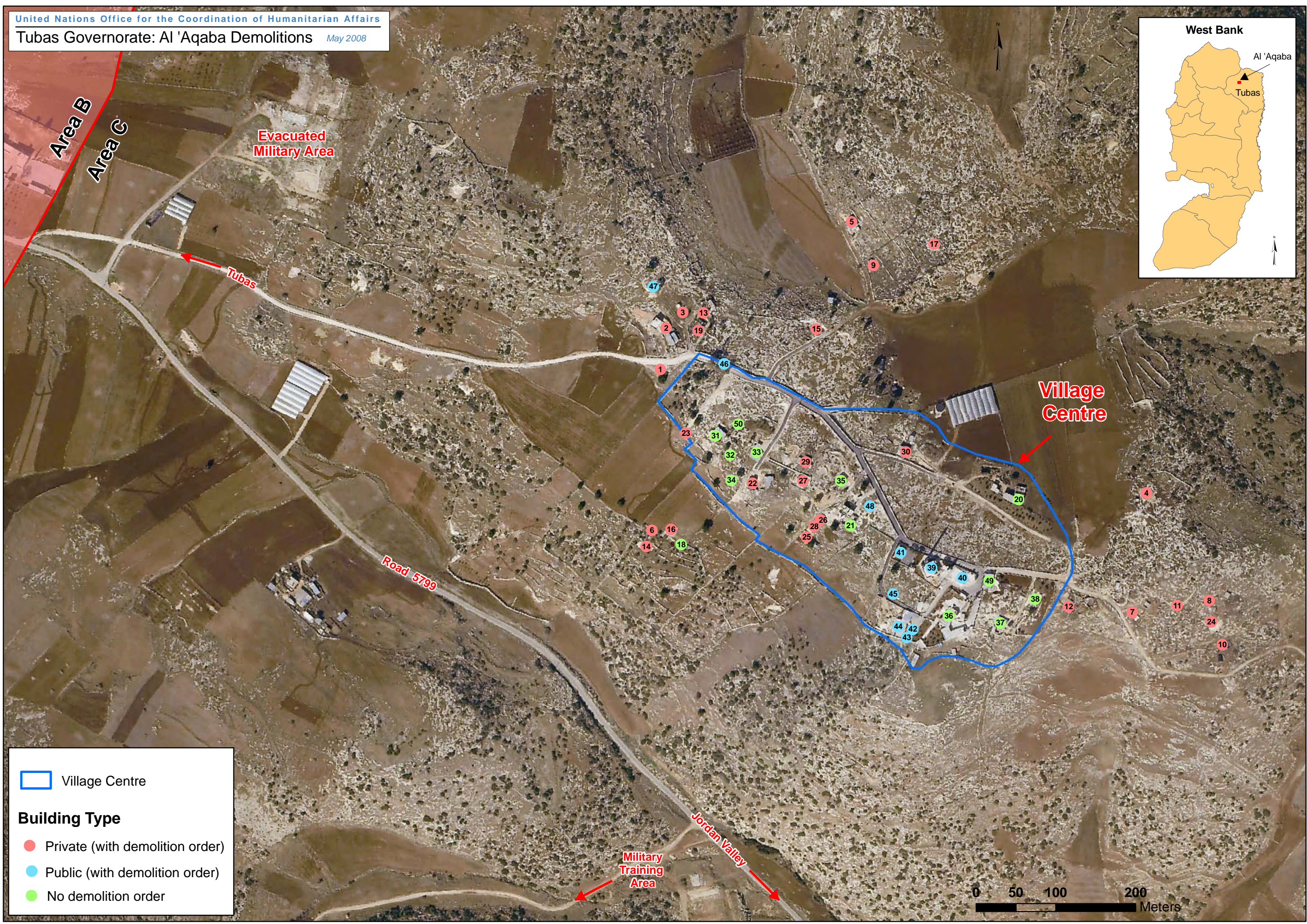






No	Kind of Structure	No of villagers	No of persons affected	No of children affected	Demolition Order
1	Private House outside centre	9	9	6	yes
2	Private House outside centre	11	11	9	yes
3	Private House outside centre	8	8	3	yes
4	Private House outside centre	12	12	7	yes
5	Private House outside centre	9	9	6	yes
6	Private House outside centre	3	3	1	yes
7	Private House outside centre	11	11	4	yes
8	Private House outside centre	6	6	4	yes
9	Private House outside centre	4	4	2	yes
10	Private House outside centre	11	11	5	yes
11	Private House outside centre	9	9	7	yes
12	Private House outside centre	2	2	0	yes
13	Private House outside centre	13	13	0	yes
14	Private House outside centre	9	9	7	yes
15	Private House outside centre	9	9	4	yes
16	Private House outside centre	9	9	6	yes
17	Private House outside centre	9	9	5	yes
18	Private House outside centre	2			No
19	Private House outside centre	6	6	4	yes
20	Private House inside centre	13			No
21	Private House inside centre	7			No
22	Private House inside centre	1	1	0	yes
23	Private House outside centre	10	10	6	yes
24	Private House outside centre	8	8	4	yes
25	Private House inside centre	9	9	3	yes
26	Private House inside centre	9	9	1	yes
27	Private House inside centre	2	2	0	yes
28	Private House inside centre	2	2	0	yes
29	Private House inside centre	8	8	6	yes
30	Private House inside centre	12	12	6	yes
31	Private House inside centre	8			No
32	Private House inside centre	5			No
33	Private House inside centre	5			No
34	Private House inside centre	3			No
35	Private House inside centre	16			No
36	Private House inside centre	3			No
37	Private House inside centre	14			No
38	Private House inside centre	11			No
39	Salah ad Din Mosque				yes
40	Residence of Imam				yes
41	Al Amal Health Centre				yes
42	Women Rural Society				yes
43	Al Haq Kindergarten				yes
44	Sewing factory				yes
45	Internal Roads				yes
46	Walls and Roadsides				yes
47	Agricultural Roads				yes
48	Power Plant				yes
49	Private House inside centre; was demolished in 1999				No
50	Private House inside centre	1			No
	Total	299 villagers	211 people affected	106 children affected	



 Village Centre

Building Type

-  Private (with demolition order)
-  Public (with demolition order)
-  No demolition order

