

Historic, archived document

Do not assume content reflects current scientific knowledge, policies, or practices.

6237

148884

LIBRARY
RECEIVED
AUG 14 1928
U. S. Department of Agriculture



1928 Catalog of 1928
Strawberry Plants
AND HOW TO GROW THEM



RAYNER BROTHERS
NURSERYMEN
SALISBURY - MARYLAND



BIG JOE

Nineteen Twenty Eight

Friends and Customers of the present and future:

Another year has gone into history; and we are again sending this little Strawberry plant salesman to aid you in making your selections. He is an honest little fellow and we back him in every thing he tells you.

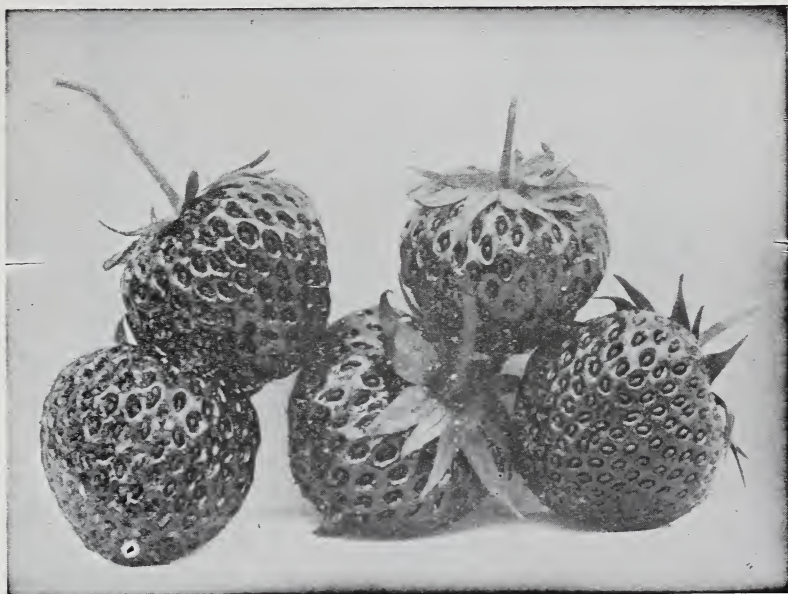
We have a fine lot of plants this year and the finest we have ever had the pleasure of offering our friends. They are big rugged plants with strong, healthy roots. The kind of plants that if given a chance will pay you well for your labor and investment.

We want to thank our friends for the many orders we received in Nineteen Twenty Seven, and we found great pleasure in reading the many kind letters received in appreciation of our service and high grade plants. We have a few printed herein and you can imagine how these letters satisfy our desire to please our customers.

If you favor us with an order we assure you we will give you every plant we can for your money, but we will not sacrifice Quality to make a low price. If the plants please you tell others, if not, tell us for we Guarantee Satisfaction.

Thanking you for past favors and wishing you a Happy and Prosperous year, we are,

Yours for More Berries,
RAYNER BROTHERS.



KLONDYKE

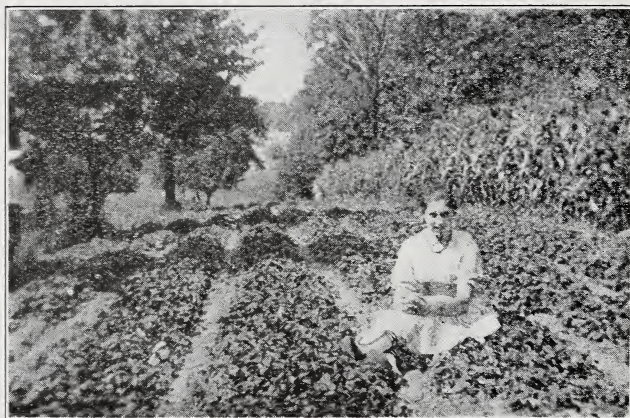
Instructions to Purchasers

TIME TO ORDER—As soon as you receive this catalog, then you will get just what you want and when you want it, without any trouble or delay. Plants will be reserved and shipped when you are ready for them.

TIME OF SHIPMENT—From October 15th to May 1st. After this date plants are shipped at purchaser's risk. With a late season the plants will go through in good condition, but we do not advise planting this late in season, and we will fill order only at purchaser's risk. We will use every precaution in our power to put the plants through in good condition.

PAYMENT—Cash before shipping, or $\frac{1}{4}$ cash with order and balance before day of shipment. Of course we will book orders and wait a reasonable length of time for remittance.

OUR PRICES—Are F. O. B. Salisbury, Md., unless otherwise stated.



TRUE TO NAME—We use every precaution to have our plants true to name, and if any stock should prove otherwise we will replace it, but in no case will we be responsible for any sum greater than paid for the plants.

GUARANTEE—That all orders will be delivered to the carriers in first-class condition. All claims should be made promptly on receipt of goods and if just will be made satisfactory. If shipment has been delayed on the road and has spoiled refuse same and notify us at once, or if you decide to accept same, have agent make notation on your receipt as to condition.

YOU ARE TAKING NO RISK—We send just what you order or refund your money, unless you tell us to substitute your order with the nearest to it we have, should we be out of the varieties you order.

REFERENCE—The Salisbury National Bank, Salisbury, Md.

ALWAYS REMEMBER—We are at your service and will always be glad to hear from you and will give you any and every possible assistance.

OUR PLANTS ARE FRESH DUG FOR YOUR ORDER—From new beds that have not borne fruit, tied in bundles of 25 and packed in light ventilated crates with plenty of damp moss so they will carry safely. We make no extra charge for crates or packing.



STRAWBERRIES

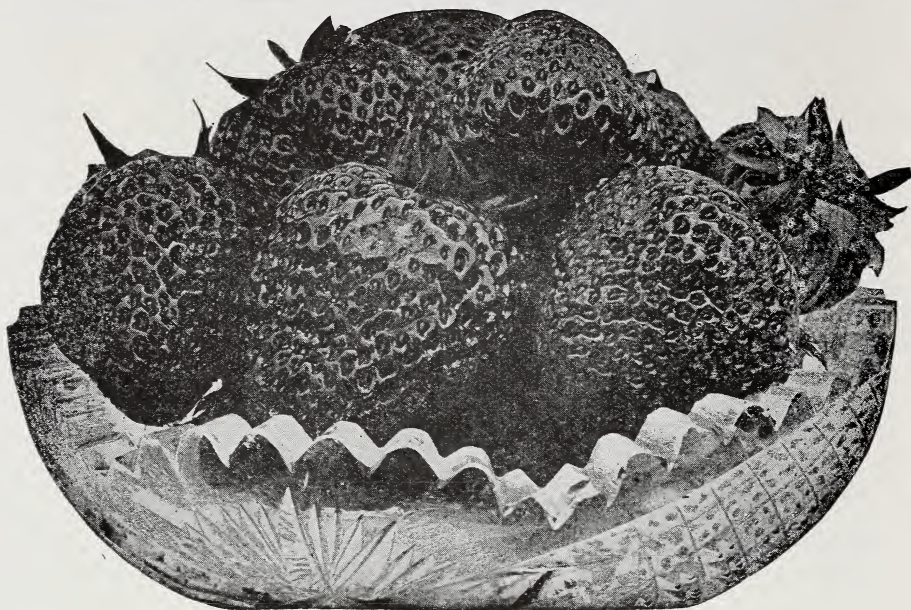
Description of Varieties

BIG LATE. (imp) A strong growing, late variety, very productive; berries medium large and are produced on strong stems, and of a deep scarlet color. A very good shipper. It mates well with Big Joe.

BUBACH. (imp) An old and popular variety; fruit very large and of good quality. Brings fancy prices in local markets but too soft for long shipments. In some soils a poor plant maker.

BIG JOE—Joe Johnson. (per) One of the best mid-season varieties. Has a great reputation for producing large crops of extra large berries; very firm and of the finest quality. A heavy plant maker.

CHESAPEAKE. (per) This is the best dessert berry of the late varieties. Fruit is very large, dark red, solid and of the best quality. Cannot be beaten for home or market use. Always brings highest prices. An erratic plant maker on some soils.



AROMA

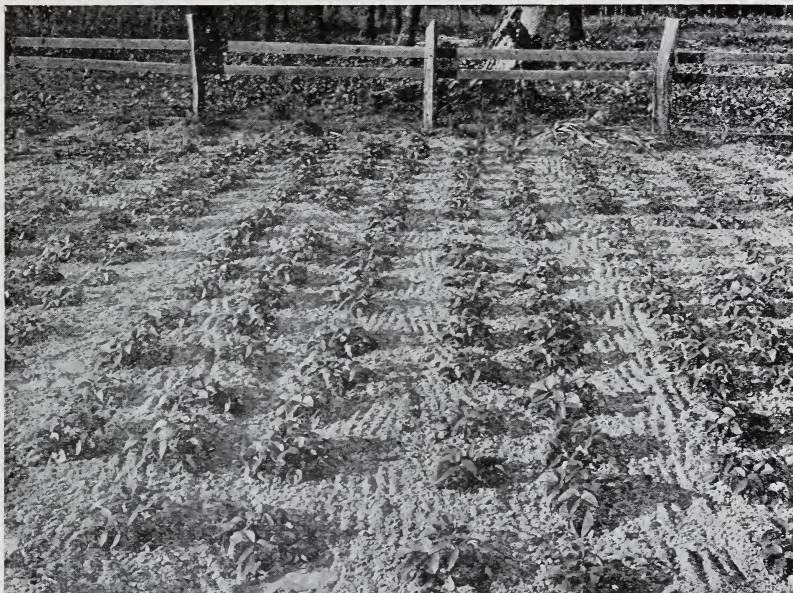
FORD. (per) A very good mid-season to late variety. If you are growing Premier for early it is an excellent follow on, for they are very similar. It is a strong grower and a good plant maker; large size and has a fine flavor. A fair shipper.

GANDY. (per) This is one of the old varieties that has stood the test of years. It is large, firm and of the best flavor; an excellent berry for commercial market. Season late to very late. As a consequence it does best in a low, moist soil.

KLONDYKE. (per) One of the best known and the most extensively planted early shipping varieties. Fruit large, firm, flavor very acid. A heavy plant maker. One of the most dependable for distant market.

LUPTON. (per) A mighty good berry, very large and uniform; very firm, a good shipper. Plants are strong and vigorous. Late.

MISSIONARY. (per) Is an old, dependable variety. Fruits heavily of good conformation, color, firmness and flavor. A good shipper and plant maker. Very largely planted in the south for early shipping.



PREMIER. (per) The very best extra early variety. Fruit of fine quality and large. A very heavy cropper and a good plant maker. Almost frost proof. This variety is a real money maker.

HOWARD 17. (per) Description same as Premier.

SENATOR DUNLAP. (per) One of the best varieties for the beginner, for the plants are very hardy and will thrive if given half a chance. They produce an abundance of large berries of fine flavor. We recommend them for home or local market.

DR. BURRELL. (per) Description same as Senator Dunlap.

BRANDYWINE. (per) A late, reliable market variety. Very productive of large, firm berries of good quality.

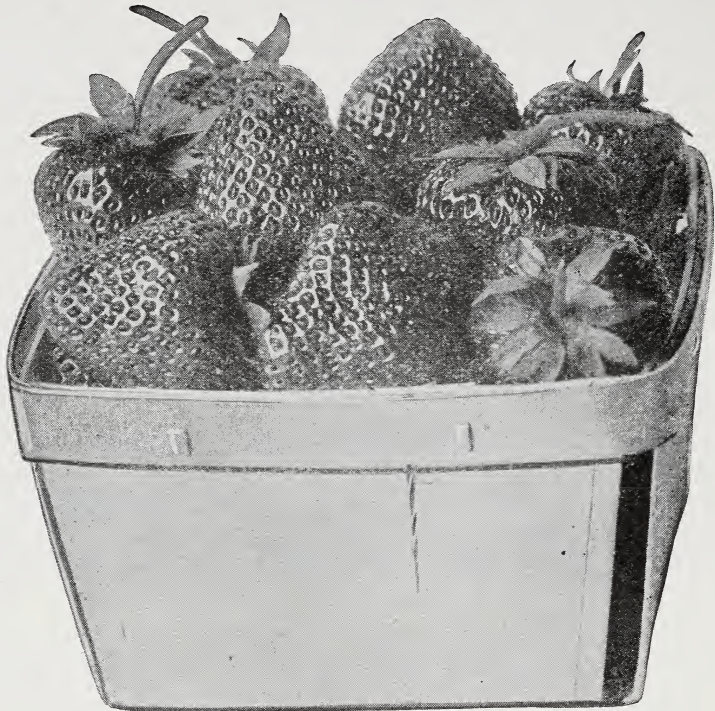
Dear Sirs:

New York, February 18, 1927.

The plants received of you are the best around this section. All varieties seemed very healthy. I am well satisfied with them.

Yours truly,

Richard Arrowsmith.



CHESAPEAKE

HORSEY. (per) This variety originated in a county just south of here. It makes strong, vigorous plants and plenty of them in most soils. Produces an abundance of large, firm berries, dark red in color. Carrying quality equal to klondyke. Season is very long, from early to well past mid-season.

COOPER. (per) This variety was introduced by the A. R. Weston Co. who praise it very highly, and from our own experience we believe it has a great future. A strong plant maker; fruit very large and of good quality; plants are strong and upright, holding berries up off the ground. A very productive mid-season variety.

BURGESS. (per). The berries resemble Aroma but are much larger. A good shipper and keeper. A poor plant maker in some soils. The introducers say "It is a prolific yielder of berries almost twice as large as other varieties.

AROMA. (per) A standard late variety, especially in the south. Plants strong and great producers of large, round berries of good quality and flavor. A good shipper.

WM. BELT. (per) One of the best flavored berries grown and one of the most popular fancy varieties, but rusts badly in some sections. Berries are large, red all over and very firm. A late variety; thrives best in a moist soil.

PARSONS' BEAUTY. (per) Strong and healthy; a good plant maker. A heavy and sure producer. Fruit large and of good quality. Recommended for home use or local market but not for long distance shipping.

EATON. (per) A mid-season to late variety which promises to become the leading variety for its season. Fruit dark red and of fine quality. Suitable for commercial planting or the home garden.

Gentlemen:

West Virginia, May 6, 1927.

The plants were received in good condition and were fine plants. Thanks for your promptness in filling my order.

Yours truly,

Wayland Stevens.

Gentlemen:

Stroudsburg, Pa., April 25, 1927.

Please send my order at once as I am ready to plant them. I got plants from you folks last year and they were certainly nice plants.

Yours truly,

Mrs. Arlie Heller.

EVERBEARING VARIETIES

CHAMPION The best Everbearer. This everbearer was introduced by Mr. Lubke of Michigan in 1917 and has been extensively planted and so far we have heard nothing but praise for it. Holds the U. S. record for production without irrigation, which is 5,632 quarts on one measured acre, in 223 days from the time the plants were set. If you intend to plant an everbearing strawberry you can't go wrong if you plant Champion for they are a sure winner. Berries same high quality as Progressive and a great deal larger and more productive.

PROGRESSIVE. (Everbearing) Is a very reliable everbearer, second to none except Champion. They will produce fruit from July until the ground freezes the year set out and two crops the following year. Plants are medium size, very hardy and vigorous, berries are of fine quality and flavor.



CULTURE OF STRAWBERRIES

PREPARATION OF SOIL—Strawberries need a well drained soil, but soil that will retain a great deal of moisture for they require a great deal of moisture at fruiting time, but will thrive in almost any soil that is not too dry or water soaked. No crop will respond more to proper care and cultivation than the strawberry. We advise planting strawberries after some truck crop that has been well manured or after some legume, if possible. We do not advise planting strawberries after an old sod as it is likely to be infested with grubs which will destroy the plants. Such land should be plowed at least a year in advance and planted to some vine crop.

TIME TO PLANT—In the northern states strawberries should be planted as soon as the ground can be worked in the spring. In the



Middle states, March and the early part of April. In the South, from November 1st till about the 20th of March. Northern growers should order plants about two weeks before they intend to set them out.

CARE OF PLANTS—If you are not ready to set the plants when received, unpack separating each variety, open the bunches, dampen the roots up to the crown but do not wet the leaves; they should then be heeled in a V shaped trench, and, if shaded from the sun they will keep in first class condition for a month if necessary.

PLANTING. Plants should be protected from the wind and sun when planting. Do not water the plants when setting them for that is very injurious to the strawberry plant. If you intend to plant

hill system, mark off rows 30 inches one way and 15 inches the other, setting plants in the check with a garden trowel; get the roots straight down and spread them out; have crown of plant level with the surface of the ground. All runner plants should be kept cut off. Under this system berries will be much larger, a quart of berries can be grown on a single plant.

The most popular method is the narrow matted row. For this system rows should be marked off 42 inches apart and plants set from 15 to 24 inches apart in the row, according to variety. After beds get to be 8 or 10 inches wide all runners should be kept cut off.

FERTILIZATION—If commercial fertilizer is to be used; broadcast on the land at least two weeks before planting and work into the land thoroughly. We find about 800 pounds of bone meal per acre will give very satisfactory results; too heavy an application of any commercial fertilizer will be injurious to the plants. Another application of about 1,000 pounds 5-8-5 per acre, in the late summer, is advisable to make strong, vigorous plants, for it takes a strong plant to produce large berries. All fertilizer should be brushed off the leaves.

HOEING AND CULTIVATING—Begin cultivating soon after the plants are set; cultivate shallow, about once a week if possible, all through the growing season. Hoe when necessary to keep the weeds down, and remember, hoe shallow and cultivate shallow so as not to disturb the roots.

MATING VARIETIES—There are two sexes of strawberry plants male and female, listed in this book as perfect and imperfect. The perfect flowering varieties will produce as well by themselves as with the imperfect flowering sorts but the imperfect sorts will produce very poorly, if at all, without the perfect varieties. They should be planted 4 rows of imperfect flowering sorts then 2 rows of some perfect flowering variety, of the same season, and so on across the field, or they may be planted in the same row using one fourth of the perfect sorts.

REMOVING BLOSSOMS—All strawberry plants begin to blossom very soon after being set in the spring and if the fruit is allowed to ripen the plants will be greatly weakened, therefore all blossoms should be removed, this may mean success or failure. On everbearing sorts the blossoms should be removed twice before the berries are allowed to ripen, other than this everbearing sorts are given the same care as standard varieties.

Dear Sirs:

New York, May 10, 1927.

My plants came today and they are very nice. Packed in fine shape. I am sending you another order. Respectfully,

Howard Bathrick.



Parcel Post Rates

The parcel-post system does not make a lower rate on nursery stock than regular merchandise rate; it is therefore prohibitive in cost except for short distances. For instance, the rate in the 6th zone is 8cts. per pound, which is too high, unless one is remote from express office, or wants only a small package. We can mail strawberry plants in almost any quantity by making a number of different packages of the order, as follows:

On 12 and 25 plants: add 6c for zones 1, 2, 3 and 4 and 8c for zones 5, 6 and 7. Postage must be enclosed in your order in addition to the price.
5, 14c; for zone 6 17c.

On 50 plants: for zones 1, 2 and 3 add 8c; for zone 4, 11c; for zone

On 100 plants: for zones 1, 2 and 3, add 10c; for zone 4, 19c; for zone 5, 25c; for zone 6, 33c.

On 250 plants: for zones 1 and 2, add 14c; for zone 3, 24c. for zone 4, 43c; for zone 5, 62c; for zone 6, 81c.

On 500 plants: for zones 1 and 2, add 24c; for zone 3, 44c; for zone 4, 83c; for zone 5, \$1.22; for zone 6, \$1.61.

Dear Sirs

New York, March 15, 1927.

We received the plants a few days ago and they are living fine.
Thanks for your prompt service.

Yours truly,

Harry Adams.

PRICE LIST OF STRAWBERRY PLANTS

	25	50	100	200	500	1000
Aroma (per)	\$0.40	\$0.60	\$0.85	\$1.30	\$2.25	\$4.50
Big Late (imp)30	.50	.75	1.25	2.00	4.00
Big Joe (per)40	.60	.85	1.30	2.25	4.50
Chesapeake (per)60	.90	1.25	2.00	3.50	6.00
Ford (per)40	.60	.85	1.30	2.25	4.50
Gandy (per)30	.50	.75	1.25	2.00	4.00
Klondyke (per)30	.50	.75	1.25	2.00	4.00
Missionary (per)30	.50	.75	1.25	2.00	4.00
Premier (per)40	.60	.85	1.30	2.25	4.50
Lupton (per)30	.50	.75	1.25	2.00	4.00
Howard 17 (per)40	.60	.85	1.30	2.25	4.50
Senator Dunlap (per)30	.50	.75	1.20	1.90	3.75
Dr. Burrell (per)30	.50	.75	1.20	1.90	3.75
Brandywine (per)45	.65	.95	1.35	2.50	5.00
Horseley (per)45	.65	.95	1.35	2.50	5.00
Cooper (per)40	.60	.85	1.30	2.25	4.50
Wm. Belt (per)30	.50	.75	1.25	2.00	4.00
Parsons' Beauty (per)30	.50	.75	1.25	2.00	4.00
Eaton (per)60	.90	1.25	2.00	3.50	6.00
Bubach (imp)45	.65	.95	1.35	2.50	5.00
Burgess (per)30	.50	.75	1.25	2.00	4.00

EVERBEARING VARIETIES

Progressive40	.60	1.00	1.60	3.00	6.00
Champion40	.60	1.00	1.60	3.00	6.00

NOTE—Different varieties cannot be added together to get a lower rate. They must be of one variety only.

All orders of 5,000 plants or more of one variety subject to 5% discount on the 1,000 rate.

All prices advance 50% after May 15th.

Dear Sirs:

Tuscarora, Md., March 18, 1927.

Find enclosed an order for plants. The plants I received in my last order were good, true to name plants and arrived in excellent shape. Thanking you for past favors.

Yours truly,

W. A. Shook.

GARDEN COLLECTIONS

Here are a few garden collections which will produce large, luscious berries from early to late, and the everbearing garden will produce berries all through the summer and on till frost. The large garden will prove profitable for you can sell some to your friends or neighbors and you can have plenty of preserves for winter.

GARDEN NO. 1.

25 Horsey	25 Senator Dunlap
25 Parsons' Beauty	25 Chesapeake

Special Delivered Price, Only \$1.00

GARDEN NO. 2.

50 Premier	50 Big Joe
50 Ford	50 Lupton

Special Delivered Price, Only \$2.00

GARDEN NO. 3.

100 Klondyke	100 Big Joe
100 Premier	100 Champion Everbearing
100 Senator Dunlap	

Special Delivered Price, Only \$4.00

EVERBEARING GARDEN

200 Champion	200 Progressive
--------------	-----------------

Special Delivered Price, Only \$3.00

Dear Sirs: Pennsylvania, April 17, 1927.

Received plants today in fine condition. Many thanks.

Yours truly,

J. W. Brown.

Gentlemen: New Jersey, April 2, 1927.

The plants which I received of you came in good very shape and were highly satisfactory. You may send me 10,000 more Big Joes.

Yours truly,

Mrs. Marie Stevens.

Dear Sirs: Maine, April 4, 1927.

My plants arrived this morning O. K. They were fine plants and packed in good shape.

Yours truly,

Arthur M. Hersom.



Tingle Printing Co., Pittsville, Md.