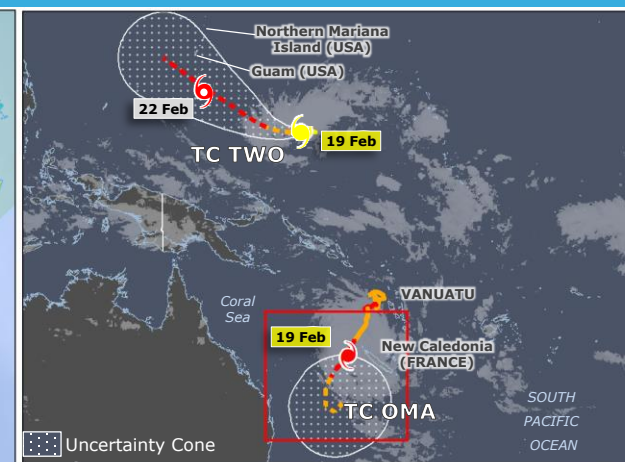
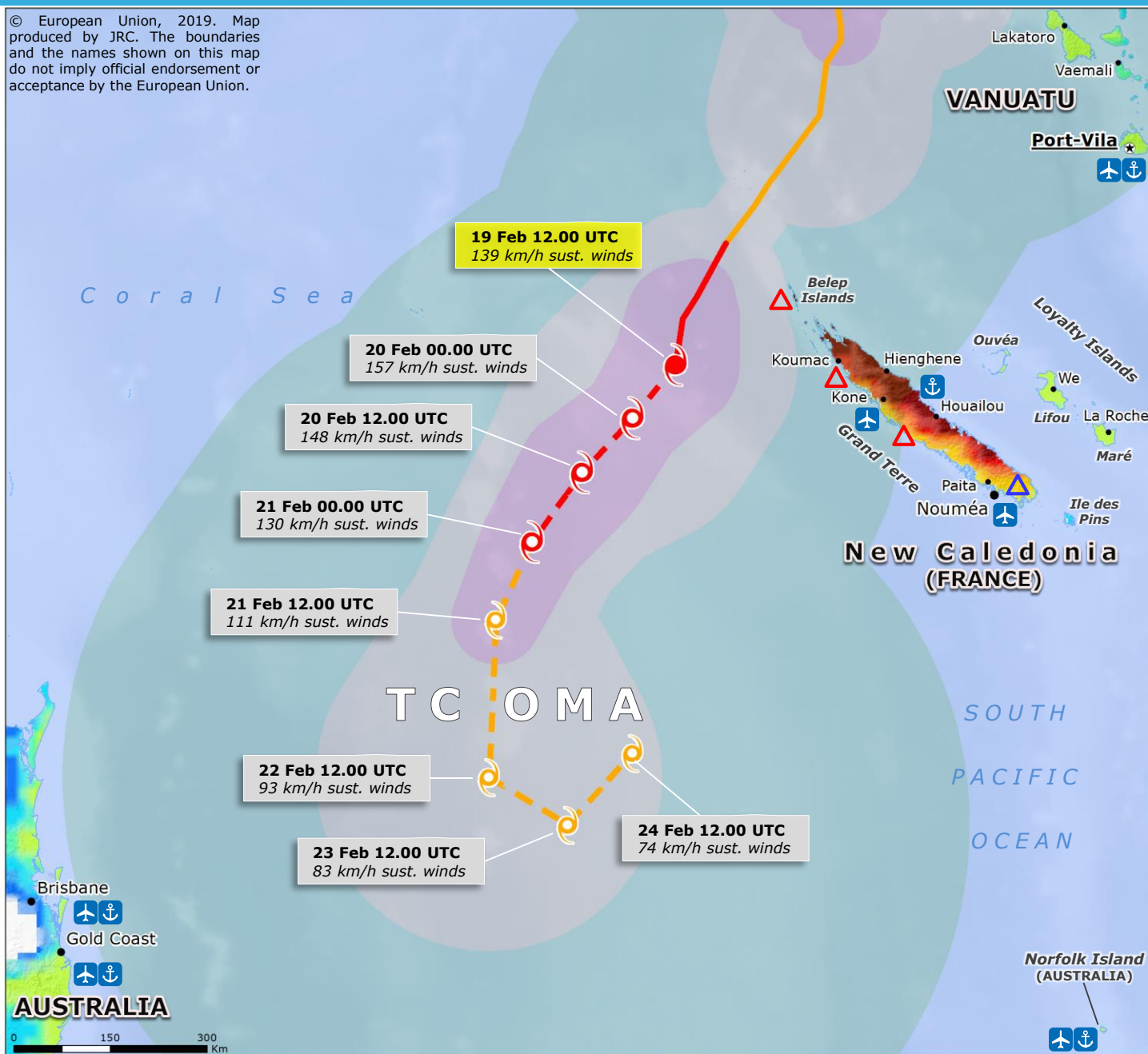
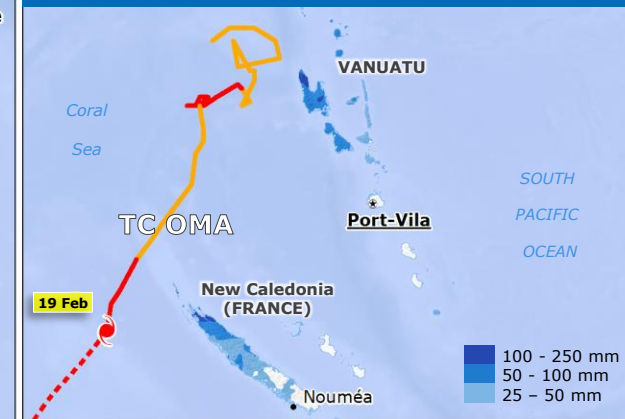


Vanuatu, New Caledonia, Australia | Tropical Cyclone OMA

© European Union, 2019. Map produced by JRC. The boundaries and the names shown on this map do not imply official endorsement or acceptance by the European Union.



LAST 7 DAYS RAINFALL ACCUMULATION (Source: NASA-GPM)



<p>TROPICAL CYCLONE (TC)</p> <ul style="list-style-type: none"> Observed position (black circle) Forecast position (colored circle) <p>INTENSITY</p> <ul style="list-style-type: none"> < 63 Km/h (yellow) 63-118 Km/h (orange) >118 Km/h (red) <p>WIND BUFFER</p> <ul style="list-style-type: none"> > 118 km/h (pink) 93-118 km/h (light green) 63-92 km/h (green) <p>Airport (airplane icon)</p> <p>Port (anchor icon)</p>	<p>COMMUNITY ADVISORY</p> <p>As of 19 February Source: Météo France Nouvelle-Calédonie</p> <ul style="list-style-type: none"> Cyclone Alert Level 2 (red triangle) Cyclone pre-Alert (blue triangle) <p>10-DAYS RAINFALL FORECAST Source JRC GloFAS-ECMWF</p> <ul style="list-style-type: none"> 10-15 mm (light blue) 15-20 mm (medium blue) 20-25 mm (cyan) 25-50 mm (green) 50-100 mm (yellow) 100-150 mm (orange) 150-200 mm (red) >200 mm (dark red)
---	--