

Conservation Resources
Lig-Free® Type I
Ph 8.5, Buffered

F 867
.V67
Copy 1

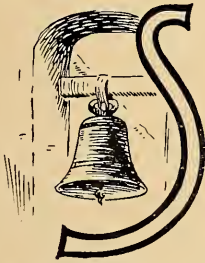
VIEWS OF
SOUTHERN
CALIFORNIA

13-11
Oct. 31. 1904
a
100472

7867
2/67

10

Southern California



SOUTHERN CALIFORNIA is the name usually applied to the seven southernmost counties of the great Golden State, namely, Los Angeles, Orange, San Bernardino, Riverside, San Diego, Ventura and Santa Barbara, which have a combined area of 45,000 square miles and a total population of more than 450,000. This country has a coast line of about 275 miles, and by a peculiar configuration of two hundred miles of mountains at a distance of from thirty to ninety miles from the Pacific Ocean it is, in a sense, isolated from outside climatic influences and preserved as a land unequalled on the face of the globe — a land of perpetual summer with no extremes of heat and cold and a climate that makes the sick well and the strong more vigorous — where flowers, fruits and grasses grow and ripen every calendar day of the year. At points on the coast of Southern California there is scarcely any noticeable difference between

the average monthly temperature of July and January, and even at Los Angeles, which is fifteen miles from the Ocean, the average difference is only fifteen degrees.

The history of Southern California since Cabrillo dropped anchor in San Diego harbor in September, 1542, is marked by many interesting epochs, and the story of Spanish dominion and the sturdy conquerors, of the Franciscan Fathers and their missions, of the indolent rule of the Mexicans, of the advent of Stockton, Fremont and Kearney, and the subsequent rapid progress of the country to its present high industrial and social importance will ever be an inspiration to all Americans as well as Californians.

It is as an all-the-year-round resort for the wealth, refinement and culture of the world, and as the scene of an amazing industrial growth — the result of the lavish return given by Nature to any intelligent effort, and the timely discovery of an unlimited supply of petroleum — that the interest and attention of many has been concentrated upon this halcyonic region.

Beautiful homes, magnificent gardens, grand mountains, enticing slopes and valleys delight the eye and mind, while the cheapness and plenitude of meat, fish, game, poultry and fruits gratify the grosser senses. It is the most seductive of lands and the most tenacious in its hold upon the passing tourist.

The Southern Californian finds in the multifarious products of his native soil nearly everything needful in domestic economy, and secure from many of the climatic and other ills of less fortunately situated humans, never looks enviously toward the crowded cities and precarious farming lands of the Eastern States.

PUBLISHED EXCLUSIVELY FOR

C. P. Charlton & Co., = Los Angeles, California

COPYRIGHT, 1904, BY L. H. NELSON CO., PORTLAND, ME.



SCENES IN PASADENA

Pasadena is situated in Los Angeles County one thousand feet above and twenty-four miles from the Pacific Ocean. At the foot of grand mountains, it is a city of beautiful homes embowered in tropical and semi-tropical foliage where January roses and geraniums rival the colors of the rainbow in brilliancy. It is famed the world over as one of the beauty spots of America.



HOTEL RAYMOND



DRIVEWAY HOTEL RAYMOND



HOTEL GREEN

PASADENA HOTELS

The hotels of Pasadena are justly celebrated for their delightful environment and their luxurious appointments. The Hotel Raymond is located on Raymond Hill, overlooking the glorious San Gabriel Valley. Hotel Green is a veritable city in itself, having over 500 rooms



MOUNT LOWE

One of the most popular peaks in the Sierra Madre range, a few miles north of Pasadena. Mount Lowe is reached by railroad, cable and electric cars, the latter bearing the traveler to a height of 5,000 feet. At Echo Mountain, the terminus of the cable incline, is the famous Observatory which contains one of the largest and most powerful telescopes in the world, weighing 3 1-2 tons and being 22 feet in length and 16 inches in diameter



BALDWIN'S RANCH

This immense ranch, near Monrovia, east of Pasadena, comprises 54,000 acres and is considered the finest in the West. The ranch house stands in the midst of an orange grove, surrounded by artificial lakes and pools, majestic palms and drooping boughs of the weeping willows, while as a contrast roses are in profusion and giant cacti and stately pines battle for supremacy. Here also is the old Log Cabin, a relic of the early days, and the first house occupied by Mr. Baldwin.



SAN BERNARDINO SCENES

San Bernardino is situated about fifty miles east from Pasadena. The city was first settled by the Mormons, and though they were expelled, some of their descendants yet live here. It is a thriving city containing many fine residences. The Santa Fe shops give employment to a large number of the citizens. The Urbita Springs (upper right view) are well known throughout Southern California



LONG BEACH

This enterprising city, the "Atlantic City of the West," is located twenty-one miles southeast of Los Angeles on the shores of the Pacific Ocean. Here thousands enjoy the bracing air and magnificent surf. A finely-equipped bath house, erected at a cost of \$90,000, is a striking feature on the great beach of hard white sand over 14 miles long



REDONDO BEACH

Redondo Beach, twenty miles from Los Angeles, is one of the leading seaside resorts of Los Angeles County. Here is good fishing, a swimming bath, a long pebbly beach, and a nursery, where may be seen several acres of beautiful carnations. A commodious hotel faces the ocean



SAN PEDRO. The port of Los Angeles

San Pedro is more of a shipping port than a seaside resort. The view from the high bluffs is very fine. The United States Government is building an immense breakwater which when completed will make San Pedro harbor the largest and safest in Southern California



SCENES AT SANTA CATALINA

This glorious island, well-named the "Enchanted Isle," is a picturesque and mountainous bit of land, about thirty miles in length and twenty-five miles from San Pedro on the mainland. Its bold shores are broken by occasional pockets rimmed with a semi-circular beach of sand. Avalon, quite the most frequented resort of Southern California, is world-famous



ROCKS, SANTA CATALINA

The rocky shores of Santa Catalina cannot be surpassed for rugged beauty. The waters of the Pacific are here as blue as the Mediterranean and astonishingly clear. Climbing the overhanging cliffs one can gain a fish-eagle's view of the life that teems in the water depths



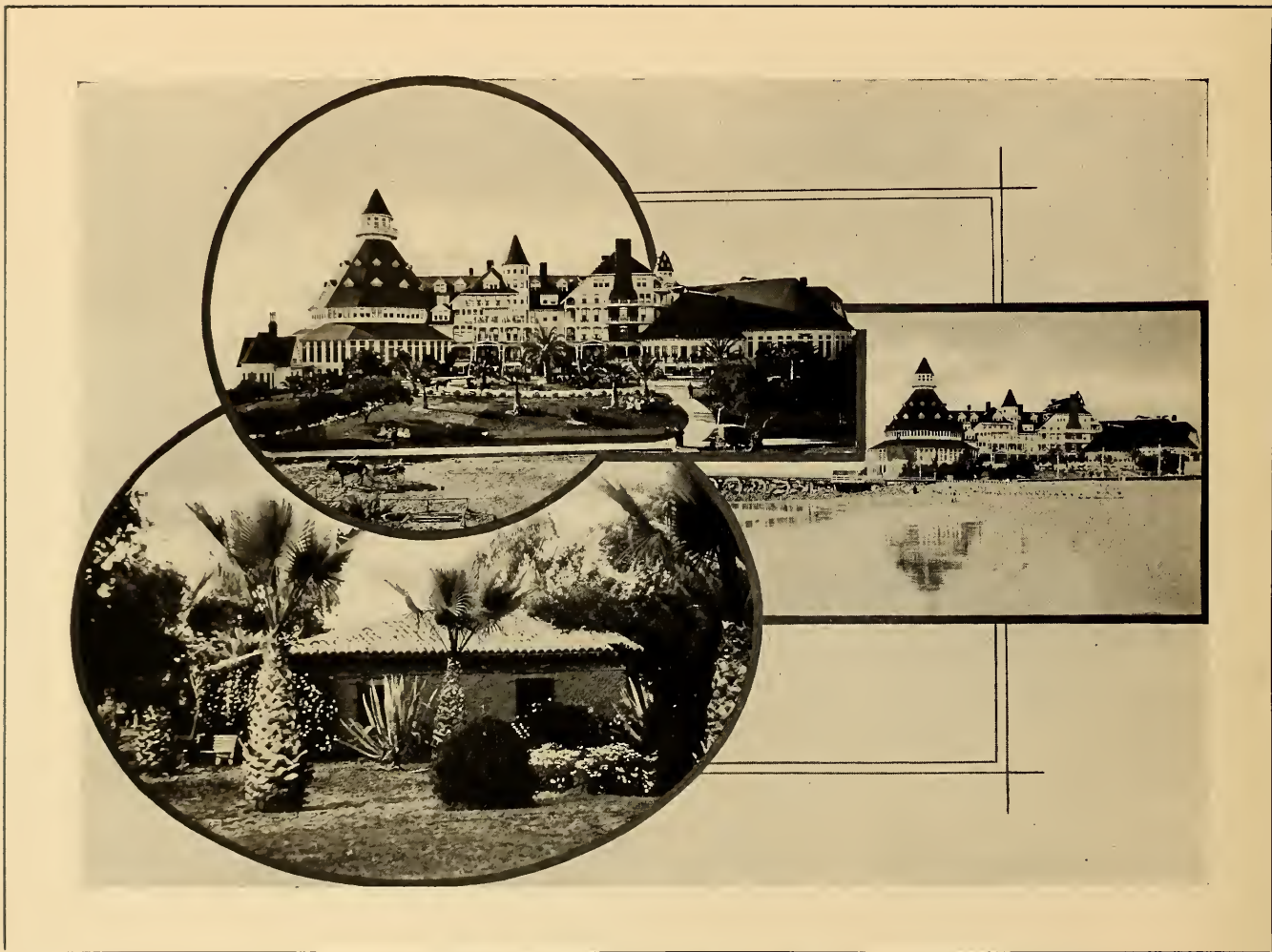
FISHING AT AVALON, Santa Catalina Island

Big and gamey fish afford splendid sport at Santa Catalina. Barracuda, sea-salmon and flying fish are plentiful. The sea-bass or jewfish furnishes the most exciting sport to the hand fisherman, and the large tuna more than many can appreciate. A season's catch of jewfish taken with rod and reel averaged over 200 pounds each in weight.



AT CORONADO BEACH

An Elysian bower by the sea, across the bay from San Diego. From the ridge of the narrow peninsula may be seen upon the one hand, a wide-sweeping arc dipping to the pretty city that borders the bay. Upon the other the unobstructed ocean rolls. At sunset or in the moonlight the scene defies description



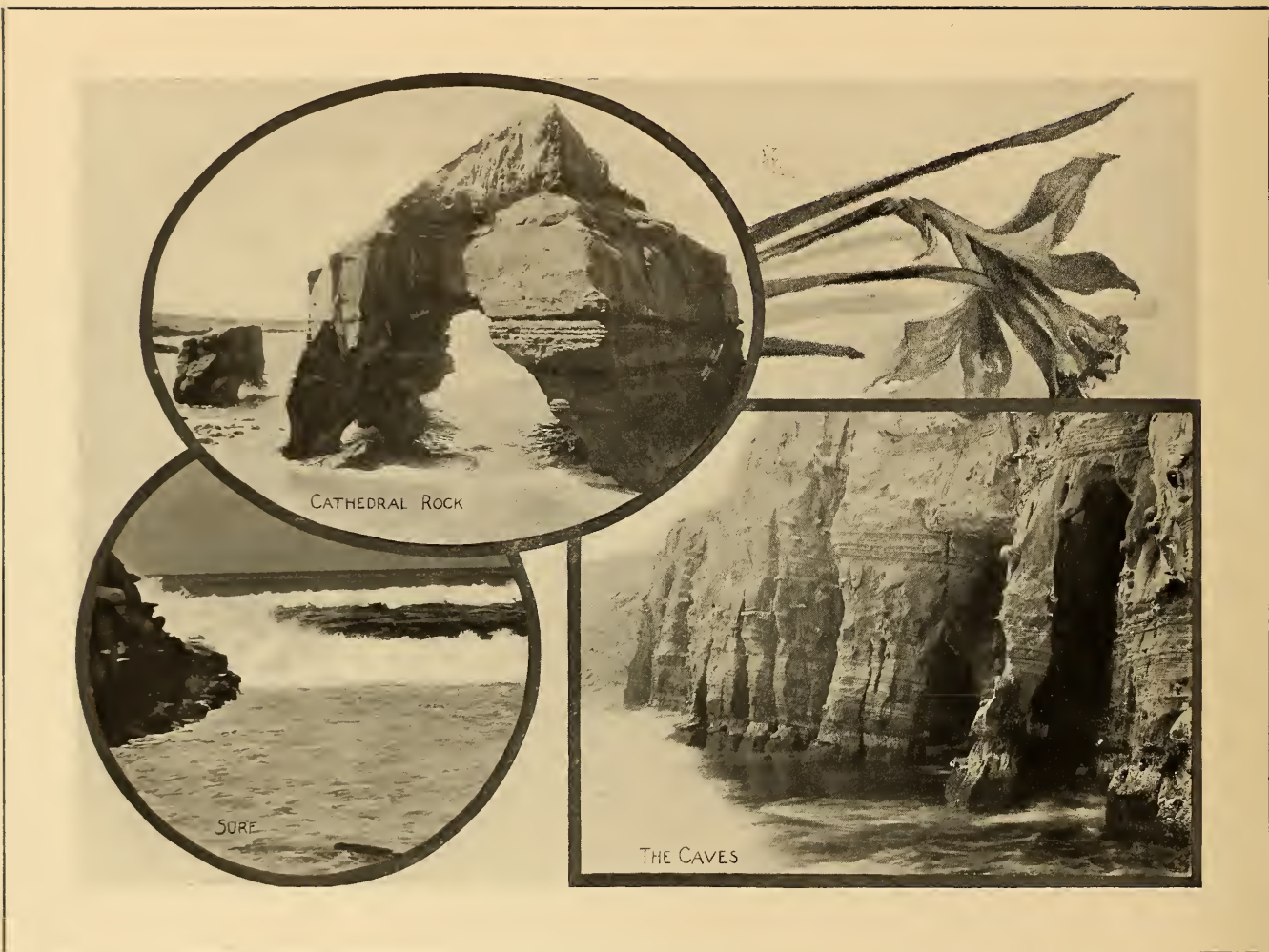
HOTEL DEL CORONADO, CORONADO BEACH

The magnificence of the Hotel del Coronado has given it leading rank among the great hostelries of the world. It is built around a quadrangular court—a dense garden of rare shrubs and flowering plants more than an acre in extent. A glass-covered veranda along the western front looks over the sea toward the distant islands. The lower left view is of the City Park.



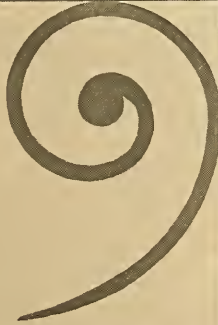
"TENT CITY," CORONADO BEACH

Tent life at the resorts of Southern California has been developed to an exact science. Regular tent cities have been established. These are not composed of ordinary tents, but rather of cloth houses, neatly fitted and set in symmetrical lines



THE CAVES OF LA JOLLA

Among the most wonderful natural beauties of the world, 15 miles from San Diego. Here the face of the cliff for miles has been sculptured by the waves into curious bas-reliefs that resemble natural objects marvelously. Here and there the cliff is gnawed into columns, arches and aisles, through which one cave after another may be seen



WINTER IN SOUTHERN CALIFORNIA

Southern California affords more perfect days for outdoor life, winter and summer, than any other place in the country. Days of cloudless skies come and go and summer glides into winter without perceptible effort. The mornings, evenings and nights are cooler, but flowers are not injured and the most delicate rose-bushes are se'dom touched with frost



CACTI AND ALOE

All the varieties of the great cacti and aloe families of plants flourish amazingly in the even climate of Southern California and it is here that scientific care has produced the most extraordinary growths



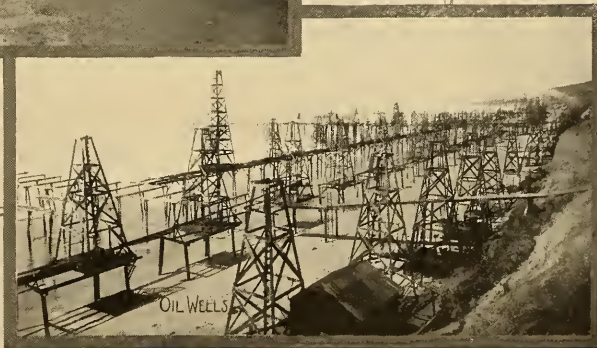
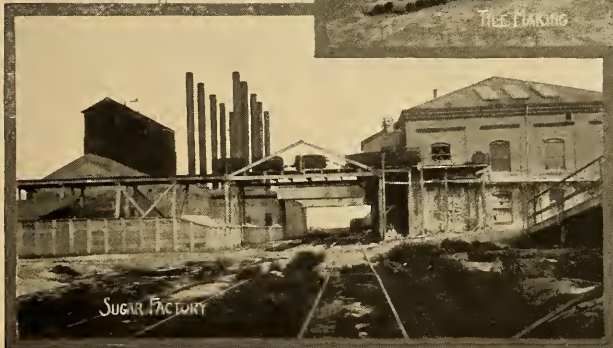
FLOWERS IN SOUTHERN CALIFORNIA

Floriculture is an important and rapidly growing industry. As it is now calla lilies, tuberose, hydrangeas, carnations and poppies are raised by the acre, not only for sale as cut flowers, but also for bulbs and seeds, which are shipped east in large quantities. California grown seeds are the best in the world



FARMING IN SOUTHERN CALIFORNIA

The agricultural possibilities that have laid dormant through the ages have been brought to a most productive reality in this section. Nature responds bountifully to the efforts of the earnest agriculturist, and the generous sun and even climate preserve the latter from many of the troubles which beset the eastern farmer. On the great farms, harvesting is accomplished on a grand scale characteristic of the west



INDUSTRIAL SOUTHERN CALIFORNIA

The total value of the manufactured products of Southern California is estimated at about \$150,000,000 for the year 1904. The boom in manufacturing is largely due to the development of petroleum and electricity as cheap fuels. Dried fruits and raisins are produced to the value of over \$3,000,000 and the output of the oil-wells will reach a total of over 20,000,000 barrels. \$5,000,000 worth of sugar is manufactured yearly



LEMON RAISING

It has been demonstrated that this part of the Country is the natural home of the lemon tree, and its cultivation is an industry of ever-growing importance. Great care is exercised from the time the tree is set out through the various stages of growth to the final packing of the splendid fruit for the great markets of the east



ORANGE GROWING

The orange tree demands a good rich soil and a semi-tropical climate, both of which are combined in the proper proportion to effect the acme of results in Southern California. It is one of the most fascinating of occupations—to labor among perennial verdure and fragrant blossoms where the golden fruit may be picked every day of the year



ROUND-UP AT NOJOQUI, NEAR SANTA BARBARA

The great cattle ranches contribute their quota of wealth to the grand industrial total. A Round-up is the gathering together of herds for the purpose of branding the young, selecting for sale, and the driving of stray cattle to their own ranches



REMARKABLE SCENES IN SOUTHERN CALIFORNIA

PIGEON FARMS are a profitable form of industry. The one depicted here is the largest in the world. OSTRICH FARMING is a unique business which has been developed until the South Pasadena farm is now the largest known. RABBIT DRIVES are held occasionally in some of the counties to offset the fertility of this prolific animal



CELERY FIELD



PUMPKIN
FIELD



GRAPE-VINE



PI
PLANTATION

FRUITS AND VEGETABLES

Celery raising is a comparatively new industry, but now hundreds of acres are devoted to its cultivation and shipments east are by the trainload. Winter vegetables are forwarded to the eastern states and realize the highest prices. California leads the world in the cultivation of the grape and pineapple. The lower left view shows the largest grape-vine in the world at Santa Barbara



SAN GABRIEL MISSION

This historical landmark near Los Angeles and Pasadena was founded by Franciscan Fathers in 1771 for the purpose of converting the Indians in this territory and to spread Christianity in the western world. Being the best preserved of all the old missions it contains many rare old frescoes, hand carved images and paintings brought from Spain. The old bells, originally six, now only four, still chime forth the Angelus and the summons to mass



MISSION SAN JUAN CAPISTRANO

The massive ruin of the Mission Capistrano, in Orange County, about 60 miles from Los Angeles, is weatherbeaten and bare, the tower has fallen, the cloisters of the quadrangle are roofless, the bones of forgotten padres lie beneath the tangled shrubbery, but the old bells still hang in their rawhide lashings and the cross rises white against the blue of the sky. It is the most inspiring of all the old missions — never was architecture more in touch with its environment



SANTA BARBARA MISSION

The Santa Barbara Mission was one of the finest buildings erected during the Spanish dominion, as it was also the largest and most important of the missions. It is the only one in which the ministrations of the Franciscans has not ceased since its founding. It is situated within the limits of the city of Santa Barbara



TYPICAL SOUTHERN CALIFORNIA VIEWS

The luxuriant growth of trees and vegetation in Southern California is responsible for the surpassing beauty of the many private grounds and public parks. La Mirada was founded with the object of assembling there a colony of congenial people of wealth and taste who would erect country villas for winter use. It is the center of an extensive tract of olive and lemon orchards, about 15 miles south of Pasadena



MADAME MODJESKA'S HOME, SANTIAGO CANYON

This delightful natural park named by her the "Forest of Arden," is where the great actress spends her summers and all the time when not upon the stage. It is near Santa Ana, about 40 miles south of Los Angeles



OLD BALDY, one of the highest peaks in Southern California. Named San Antonio, but always called "Old Baldy" from its snow-covered peak

MOUNTAIN FIRE in the Sierra Madre Mountains

MOUNTAIN VIEW from Railroad crossing at Pomona

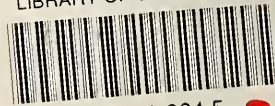
LIBRARY OF CONGRESS



0 017 168 064 5



LIBRARY OF CONGRESS



0 017 168 064 5

