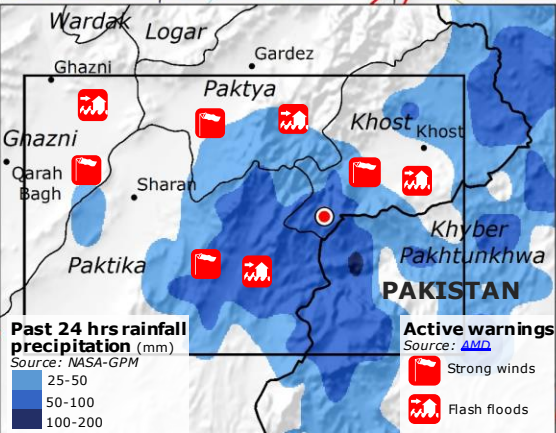
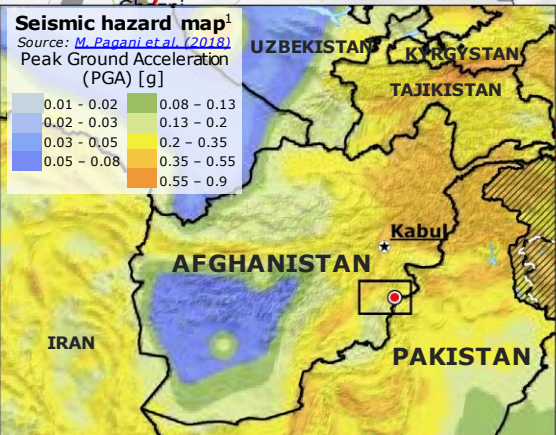


Afghanistan, Pakistan | Earthquake of 5.9 M of 21 June



Earthquakes

- 5.9 M earthquake
Source: [GDACS](#), [USGS](#)
- Focal mechanism
Source: [USGS](#)
- 4.9M foreshock
Source: [GDACS](#), [USGS](#)

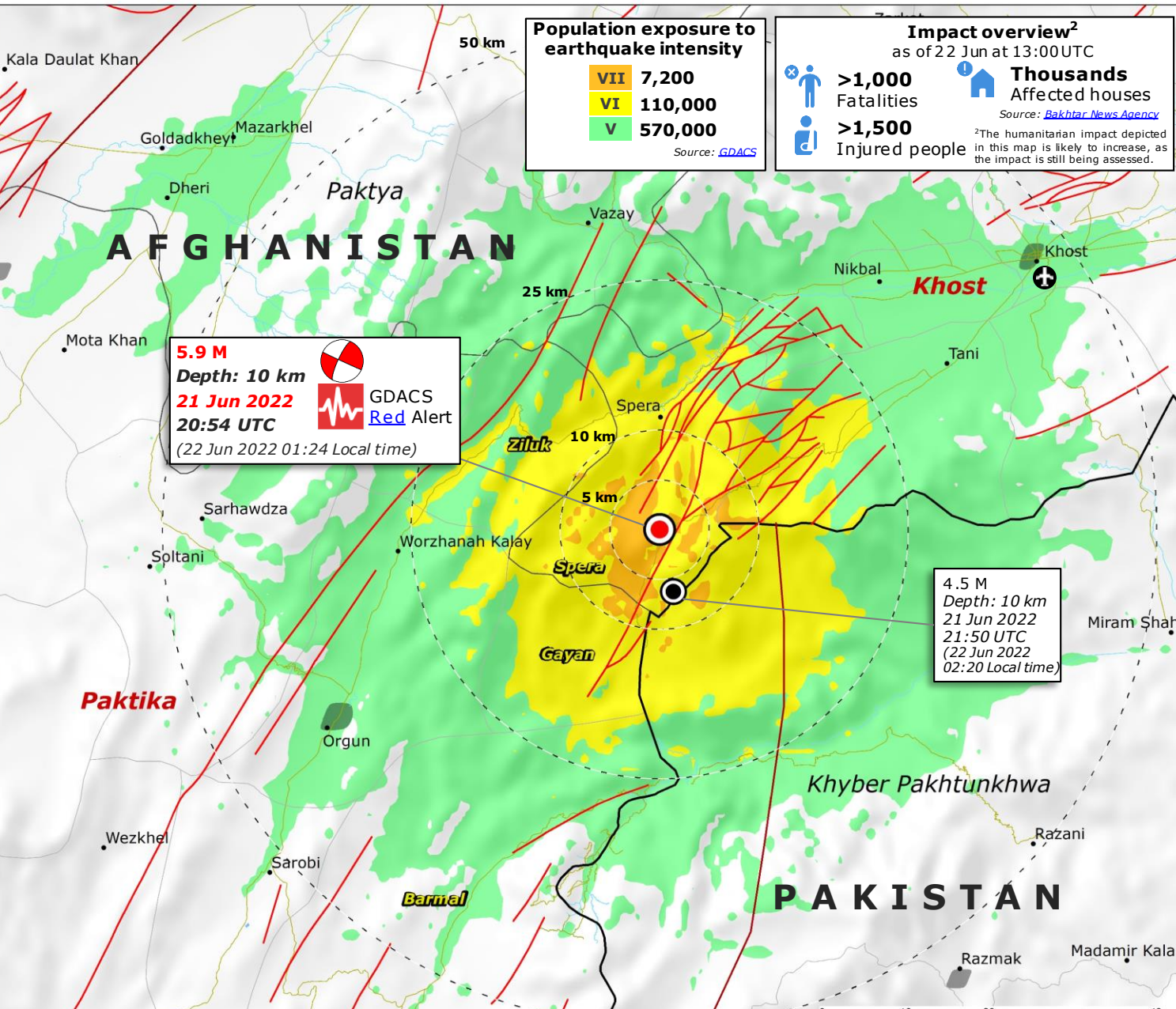
Modified Mercalli Scale intensity (MMI)

Source: [GDACS](#), [USGS](#)

- VII (Very strong shaking)
- VI (Strong shaking)
- V (Moderate shaking)

Legend

- Dis** Affected District
- Prov** Affected Province
- Faults — Active faults
- Built-up area
Source: [JRC](#) [GHSL](#)
- Main road
- ▨ Disputed area
- - - Disputed Country border
- District border
- Province border
- Country border
- ✈ Airport



¹The Seismic Hazard Map depicts Peak Ground Acceleration with a 10% chance of exceedance in 50 years, corresponding to a return period of 475 years.

