

Historic, archived document

Do not assume content reflects current scientific knowledge, policies, or practices.

62.09

LIBRARY
FEB 1 1927



The FELIX GILLET
NURSERY



1871

1926-27

NEVADA CITY
CALIFORNIA



FELIX GILLET
Founder

OVER FIFTY YEARS OF SERVICE



FOUNDED in 1871 by that well known horticulturist, Felix Gillet this nursery has rendered over fifty years of service to fruit and nut growers all over the United States. So well known a work as Bailey's Cyclopedia of Horticulture contains this encomium "The present walnut industry (California) owes its establishment to the early efforts of Jos. Sexton of Santa Barbara and Felix Gillet of Nevada City. The French varieties, such as the Mayette, Franquette, and the like owe their popularity to the tireless work of the late Gillet in promoting the production of this type of walnut".

During this eventful half century we have constantly sought out, tested and introduced new varieties that are now standard. Outstanding examples are the MAYETTE WALNUT—BARCELONA FILBERT—COMBALE and QUERCY CHESTNUTS, as well as many other fine varieties. The present grower may rest assured that our reputation so long in building will be maintained and that meritorious new plants will be tested and then brought to their attention.

THIS CATALOG—A VALUABLE GUIDE

Our specialty has long been the production of nut trees. We have advocated their planting for many years, for a constantly increasing demand has made necessary the importations of large supplies from Europe. We have so prepared this catalog that you may form an intelligent opinion of the reasons why you should plant the various nut trees; how you should go about it and what varieties are best suited to the demand. In our **Ornamental Department** you will find trees, shrubs, and vines in great variety for beautifying your home. We will consider it a favor if you will allow us to help plan your planting.

The FELIX GILLET NURSERY

Pronounced "Jill-ay"

NEVADA CITY

CALIFORNIA

WHAT OUR SERVICE MEANS TO YOU



WHEN a concern has been successfully meeting the needs of planters for several generations there must of necessity been an accumulation of information and special knowledge that will prove of great value to you of this generation. Within the limits of this catalog we have endeavored to give hints and instructions that if carefully followed will mean success with your planting, and attendant profits. If there is special information you want please feel free to call on us. We shall try to be helpful.

OUR NURSERY IDEALLY LOCATED

Our location (2600 feet elevation) in Sierra Nevada Mountains of NORTHERN CALIFORNIA with a soil well adapted to producing thrifty, fibrous rooted, well ripened trees and plants, insures perfect hardiness wherever they are planted. Our stock is carefully grown, dug and packed under the close supervision of the owner.

IT IS EASY TO ORDER

Our Terms and Policies

PLEASE READ BEFORE ORDERING

SUBSTITUTIONS—None is made unless so instructed by you.

ADJUSTMENTS—We promptly and cheerfully correct any errors made by us, but cannot do so unless promptly advised on receipt of stock.

REPLACEMENTS—Transplanting is an un-natural process. Under most favorable conditions a small percentage sometimes fail. Our jealously guarded reputation for fair dealing for over 50 years, insures the class of stock we send out. Yet other agencies, such as delay in transit, failure to promptly remove after terminal inspection, improper planting, ill prepared, impoverished or unadapted soil, disease, injury, drought and insect attack, are all beyond our control. Any, or a combination of these circumstances may cause failure, and we, of course, cannot be held responsible for such failures.

TERMS—Cash with order, or on orders placed long in advance of shipping date, 20 per cent cash will hold same. Expense of handling will not permit acceptance of orders for less than \$1.00. Parcel post charges must be included. Freight and express are paid by purchaser.

Five trees or plants at 10 rate; 50 at 100 rate; 300 at 1000 rate.

PACKING

We have never received complaint of packing. Our triple sealed 3000 mile package insures protection. No charge is made for packing when cash accompanies order.

OUR GUARANTEE

The Felix Gillet Nursery will exercise care to have all stock true to name, nevertheless it is understood and agreed that should any stock prove untrue to name, The Felix Nursery shall be liable only for the sum paid for the stock which may prove untrue, and shall not be liable for any greater amount.



Top, DuChilly
Lower, Barcelona

NUT TREES

Yield Rich Returns

Fruit growers who have kept their accounts in RED INK the past few years, who are to make new plantings will choose wisely in the nut trees. No tree crop offers better profits than the FILBERT. The insert at the bottom of the page taken from the Literary Digest tells the story in a "nut shell". FILBERTS in enormous quantities are going into confectionery, especially the 5 and 10 cent bars that sell so freely. DO YOU KNOW that nearly 20,000,000 pounds of FILBERTS WERE IMPORTED IN 1925 and that more would have come in if they had been available? DO YOU KNOW THAT you could have grown part of this tonnage as well as that which paid you nothing? DO YOU NOT OWE IT TO YOURSELF to find out if you can grow this nut? ARE YOU ONE WHO THINKS FOR YOURSELF OR DO YOU FOLLOW YOUR NEIGHBOR OR THE CROWD? DO YOU REALIZE THAT this large consumption of filberts was BECAUSE OF THE MERITS OF THE NUT ITSELF? No cooperative, no stupendous advertising campaign, no high pressure salesman, no government subsidy URGED PEOPLE TO EAT THIS NUT. IT SOLD ITSELF BECAUSE IT IS GOOD.

READ THIS IMPORTANT NEWS

First read the RESTRICTIVE ORDER of the United States Dept. of Agriculture, which is now in effect. This order will cut down importations of foreign nuts. Its effect will be greater than a protective tariff. Then read the quotations from the Literary Digest telling of the enormous quantities of nuts consumed by the American people. READ ON, we tell you how to turn this big opportunity into DOLLARS.

U. S. DEPT. OF AGRICULTURE CONFERS BLESSING ON NUT GROWERS.

READ THIS IMPORTANT NEWS

Notice of Permit Requirement for Entry of Chestnuts, Walnuts, Filberts, Cobnuts, and Acorns From Europe.

Notice is hereby given that in accordance with the proviso to Regulation 2 (as amended) of the Rules and Regulations Supplemental to Notice of Quarantine No. 56, all species and varieties of chestnuts, walnuts, filberts, cobnuts and acorns may be imported from any European country, on and after October 1, 1926, only under permit and on compliance with the safeguards prescribed therein.

Done at the City of Washington this 22nd day of September, 1926.

Witness my hand and the seal of the United States Department of Agriculture.

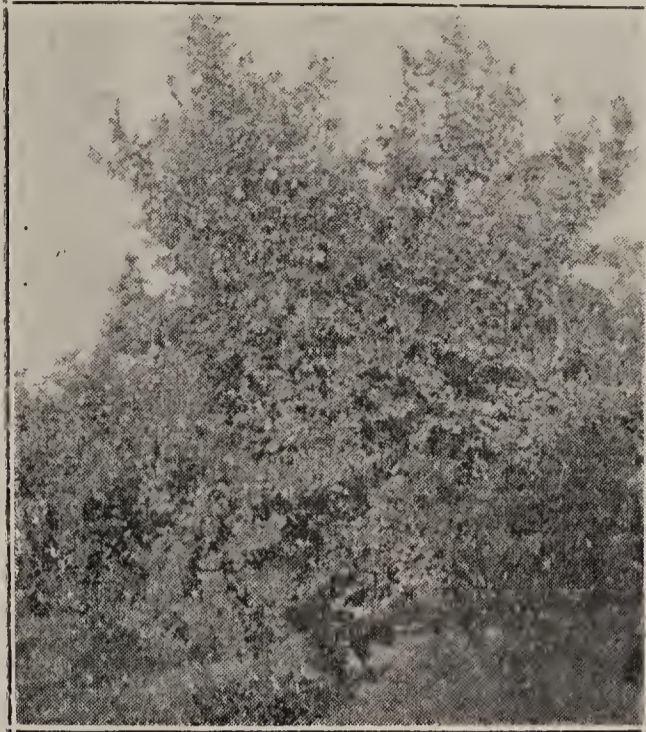
(SEAL)

W. M. JARDINE,
Secretary of Agriculture.

OUR PROSPEROUS NUT GROWERS

American nut-growers, led by the planters of the once lowly peanut, are counting on a big income this year. The demand for all kinds of nuts, writes J. C. Royle in a Consolidated Press dispatch, is increasing steadily, especially from the confectionery trade. The package candies which have scored the largest sales in the last year have used tremendous quantities of nuts, while the grocery trade now can be counted on to absorb a definite amount.

—Literary Digest 8-7-26.



The Original Barcelona Filbert
Tree. Now 50 Years Old

FILBERT OR HAZEL NUT

Bears Well - Sells Well

THE FILBERT is one of the most profitable trees you can plant. It is easily grown, has no insect enemies, requires no spraying, thinning, or propping. It stands heavy frosts, bears young and continuously, living to great age. It bears well as a tree or a bush and makes splendid profit producing windbrakes. It is a fine ornamental (see page 14). The nuts find a ready market. Millions of pounds are imported in order to supply the American demand.

WHEN AND WHERE TO PLANT

FILBERTS will produce heavily in rather poor soil, but trees will be larger and nuts more plentiful on good soils. They will be profitable on rocky, ledgy ground but they must have adequate moisture under any conditions. In California a North-east exposure would be best, but they will succeed, in other exposures. The planting should have good air drainage, where heavy frosts occur in the Spring. Thus an elevated site is to be preferred. Plant from December 15th to March 15th; the earlier the better. The coast counties of California have ideal conditions for this nut, also the Sierra foothills.

DISTANCE APART TO PLANT

On good soils plant 20 or 22 feet apart. On poorer soil 16 to 18 feet. Either square or triangle method of planting is satisfactory, if the latter, allow 15 per cent more trees to the acre. For windbrakes 6 to 10 feet apart.

YIELDS 1000 TO 2000 LBS. PER ACRE

Filberts trained to tree form and on good soils will often yield as high as 40 pounds per tree, but the planter must not expect such high yields as a regular crop, for like other tree fruits the filbert will vary from year to year. According to location, soil conditions, moisture available and care given you can safely take 1500 lbs. per acre as an average over a five year period. At current wholesale prices this will gross \$300.00 per acre.



How To Grow FILBERTS

Continued

They Even Grow on Ledges

—TO SUCCEED—

You Must

- buy our GENUINE LAYERED BARCELONA TREES.
- Buy some of its pollinating varieties.
- prepare your ground well.
- dig good holes 2x2 feet.
- Use 1 lb. fine bone meal to each tree, mixed well with top soil in hole and about the roots.
- Apply lime to soil if it is acid.
- shade the stem of young trees, either with regular protectors (see page 23) or otherwise.
- irrigate and cultivate regularly.
- plant as early in spring as possible.
- or if wise, will plant a cover crop, suitable to your local conditions. It should be planted when you plant the trees. Heavy production of any fruit is obtained only in well fertilized soils.

You Do Not Need To

- use your best land.
- prune every year.
- spray for any pest.
- fear disease.
- fear that rain will spoil the crop.
- fear frost.
- fear over-production.
- expect damage from rabbits or gophers.
- thin the crop—prop the limbs or climb ladders to get the nuts.
- buy trays, shipping boxes, or any expensive packing equipment.
- bleach or artificially prepare the crop for market.

POLLENIZING—May be done by devoting 11 per cent or 16 2-3 per cent of the planting to pollenizers, or a better way is to plant solid to Barcelona and later on graft in one limb to a pollenizer, preferably the Nottingham.

Eleven per cent means every third tree in every third row is a pollenizer. Twenty feet apart takes 12 pollenizers to the acre.

Sixteen and two-thirds per cent means every third tree in every second row is a pollenizer. Twenty feet apart takes 18 pollenizers to the acre.

Good results may be expected with either percentage. We advise planting solid to Barcelona, buying a few trees of pollenizers to use as mother plants from which to take grafts for top grafting one limb of the Barcelona. Higher yields per acre will result from this method.

PLANTING. Maximum Yields will result from training to tree form, with single stem branching at 15 to 24 inches or higher. Careful disbudding of sucker buds at planting time and removal of suckers as they may appear for a few years will allow branches to make nice shaped trees. **Cut shows disbudding method.**

Good yields will result from the bush form allowing four or five shoots to grow from root crown. Do not disbud for bush form.



FILBERTS—Continued.



Barcelona, Fruiting Branch

BARCELONA—The best commercial variety; introduced and named by us. Our plants are therefore genuine, being direct from the original mother tree. Its value, for the grower of market nuts, lies in its heavy yield, large size, good appearance, strong growth and disease resistance. The nuts are not retained in the husks. All drop to the ground over a period of three weeks. One inch broad by $\frac{3}{4}$ inch thick. Round or nearly so, color brown-bright and handsome. Borne singly and in clusters of two to six. Barcelona trees offered this season, are in bearing.

*DuCHILLY. Large, over 1 inch long by $\frac{3}{4}$ inch broad, flattened. Excellent quality, good bearer. Brings five cents a pound premium.

> KENTISH COB. Identical with DuChilly except in growth and has a greater abundance of catkins. Bears well without cross-pollination.

X BRUNSWICK. Nearly identical with DuChilly.

— *DAVIANA. Nut large, roundish oblong, excellent quality. One of the best pollenizers for Barcelona.

/ DES ANGLAIS. Nearly identical with Daviana.

> *MONTEBELLO. Reported from Oregon as good pollenizer for Barcelona.

*WHITE AVELINE. Medium size, fair bearer. Quality very high.

*GROSS RONDE. Nearly identical with White Aveline.

> *RED AVELINE. Medium size, fairbearer. Quality very high.

> PURPLE LEAF AVELINE. See page 14.

> NOCE LUNGHE. The largest of all. One inch long by $\frac{7}{8}$ inch wide. Good quality, good bearer.

> IMPERIAL. THE VARIETY WITH A GREAT FUTURE. Large, good quality. The handsomest of all. Heavy bearer, strong grower. Well rooted plants. \$1.50 each. Smaller \$1.00 each.

> *Nottingham. Best pollinator for Barcelona. Fruit medium, good quality. Borne in large clusters. (Sold only with orders of 100 trees or more of Barcelona). Four year old bearing trees \$3.50 each.

*These varieties will pollinize Barcelona and will be sold only in connection with Barcelona.

N. B. Important. A nut, sometimes two, in some clusters of all filberts will always be empty. Nuts without kernel always stick to husk and can be eliminated at harvest. Fruit trees never set every blossom. In the case of pome and other fruits borne singly the un-pollinated fruits drop off soon after blossoming. Nuts borne in clusters like the filbert and chestnut the whole cluster is carried until harvest resulting in some empty nuts or burrs. This explains why trees bearing very heavy crops will always have some blanks.

OUR REASONABLE PRICES ON FILBERTS

All are grown from layers. Prices for all varieties except as noted.

	Each	10	100	1000
3 yr. very heavy roots, 5 to 6 feet.....	\$1.00	\$7.50	\$65.00	\$600.00
3 yr. heavy roots, 4 to 5 feet.....	.85	6.50	55.00	500.00
2 yr. medium roots, 3 to 4 feet.....	.75	5.50	45.00	400.00
2 yr. lighter roots, 2 to 3 feet.....	.65	4.50	35.00	300.00

Five at 10 rate, 30 or more at 100 rate, 300 or more 1000 rate.



Chestnut in Nursery
5 months from graft
Note Burs

**COST LITTLE TO PRODUCE—
YIELDS BIG**

Requiring very little pruning, no spraying, no propping, no ladder climbing—the Chestnut is produced at very low cost. After the tree has been in three or four years no pruning is necessary. Let it grow naturally. Old trees should have the brushy growth removed from inside every four or five years. **2000 to 5000 lbs. per acre may be expected.** At a minimum price of 15c per lb. the cash return will run from \$300 to \$750 per acre. Chestnuts bloom in June and are never injured by frost.

SOILS—On heavy rich soil plant 60x60 feet. Poorer land 50x50 or if space is limited 45x45. The chestnut requires plenty of light and air. Sixty feet between rows and 30 feet apart in the row is best plan. Take out every other tree in row before they crowd. This plan allows cropping of the wide space for a number of years.

IRRIGATION—When well established they will bear bountifully without irrigation. If water is available irrigation should be practiced. Heavy irrigation followed by cultivation three weeks before nuts begin to fall is desirable.

Chestnuts

Bear Nuts Quickly



If the United States Dept. of Agriculture had not issued its recent order restricting importation of Chestnuts (See page 4) there would have been great inducement for Pacific Coast growers to plant this tree. For in order to meet the demand for this nut great quantities are annually imported—in 1923, 25,198,840 lbs. 1924, 27,338,284 lbs. 1925, 25,710,142 lbs. came from abroad. A great many of these came to the Pacific Coast because our growers have neglected their profitable home market with quick cash returns, to ship highly perishable deciduous fruits 3000 miles away—assuming not only the risk of transportation but the dangerous competition of other fruits. **COMMON SENSE** will again prevail and thinking growers will plant **CHESTNUTS**, not alone for the Pacific Coast market, but the Eastern market as well.

NO COMPETITION FROM EASTERN STATES

The chestnut bark disease has wiped out all the native growth in the East and it would be a foolhardy grower who would think of planting this nut commercially there. This disease is never likely to invade this coast, for California has rigid quarantine laws preventing its introduction. Then too, climate conditions are not favorable to its spread here. **A BIG OPPORTUNITY IS KNOCKING AT YOUR DOOR.** Will you let it in or bolt the door?

CROSS-POLLINATION—More than one variety should be planted, both for benefits of cross-pollination and to lengthen out the harvest season.



CAUTION AS TO ORDERING

If you live in California do not order Chestnuts from outside the state. Quarantine laws forbid their entry. Certain States forbid entry of this tree from certain other States, BUT EVERY STATE WILL ADMIT CHESTNUT TREES FROM CALIFORNIA SO YOU ARE PERFECTLY SAFE IN ORDERING FROM US.

COST TO PLANT—While the price per tree is higher than most trees the cost per acre is lower than most any tree fruit. The initial cost per acre can be cut to as low as \$10 by planting our seedling trees and later grafting them to named sorts. This is a good plan and we recommend the purchase of several grafted trees from which to take grafts. **GRAFTED TREES 12 TO THE ACRE WILL COST BUT \$21 to \$33.**

FINEST VARIETIES—The varieties we list are the very finest now known. We are constantly on the lookout for chestnuts of promise and test out the best of them. Early bearing, good size and quality, regular crops, nuts drop free from the burr are qualities that a commercial grower must insist on in order to make the greatest profit. The varieties we list have all these qualities as well as some others, such as exceptional beauty, size and quality. **Do not be misled in planting chestnuts. Some varieties are unprofitable.**



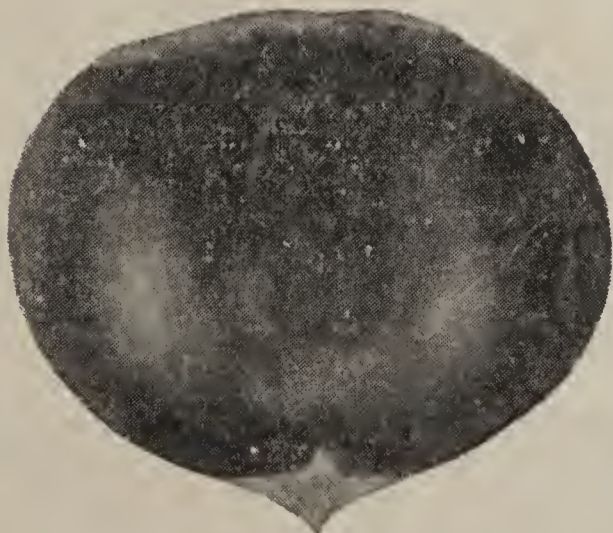
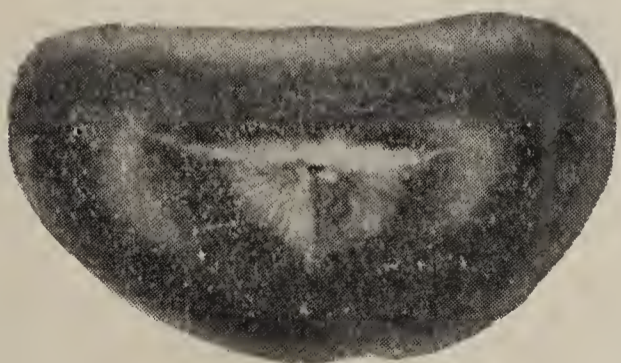
Quercy Chestnut

WHERE TO PLANT—This nut is a regular mountain tree and in the Sierra Nevada Mountains wherever the Black Oak is found will be ideal conditions. They are also at home in the Valleys and should do well near the coast. Immense trees can be expected on the deep heavy soils. They take kindly to adobe.

PLANTING—Dig deep holes and plant but slightly (one inch) deeper than before. Put only top soil well firmed around the roots. Firm tightly with ball of foot as soil is passed in. Put in stake at planting time and tie tree loosely to it. Cut back unbranched trees one-half and allow one strong shoot to grow to 6 feet where it may be headed. Let grow naturally. **DON'T TRAIN TO VASE FORM.** Shade trunk for first few years with tree protectors (see page 23) or two thin boards.

PLANTABLE SIZE TREES VERY SCARCE

Supplies of chestnut trees, especially the finer grafted varieties are decidedly limited. Taking into account the demand that will be caused by the government's restricting order, there will not be enough to go around. **YOU MUST PLACE YOUR ORDER NOW.**



"Colossal" Top and Side View Actual Size

COLOSSAL

This new, extra large variety we introduced last season and the demand for trees for this season's delivery was so large that we find ourselves with but a limited number left. These we aim to distribute over a wide range so that all can have a chance to try them out. Therefore only one tree will be booked on each order and then only in connection with other orders for chestnuts.

This year at ten years old this tree bore 135 lbs., which at 20c per lb. allowing 17 trees to the acre, would yield \$459.00 per acre. This variety promises **BIG PROFITS.** The nuts are big, the crop is big and the profits are big.

Matures nuts early. Nuts drop free from burr. Price \$3.50 per tree.

1
275

PRICES ON GRAFTED CHESTNUT TREES

One Year Tops, Two Year Roots

Caliper in inches	Height	Each	Per 10
1 1/16 and up	6 to 8 ft.	\$3.00	\$27.50
X 9/16 to 1 1/16	4 to 6 ft.	2.75 X	25.00
7/16 to 9/16	3 to 5 ft.	2.50	22.50
3/8 to 7/16	2 to 3 ft.	2.25	20.00
1/4 to 3/8	1 1/2 to 2 ft.	2.00	17.50

Five of different varieties at 10 rate. We grade chestnuts by caliper as some grow short and stocky.

FULLER—A hybrid sweet of finest quality. Medium size. Matures mid-season. Easily kept in good condition until spring. Nuts fall free from burr. Very small stock this season.

LARGE AMERICAN SWEET — Five times the size of native American sweet and nearly as good quality. Matures very early, bringing top prices. Very attractive in form and color. A good bearer and strong grower. Nuts fall free from burr, and are uniform in size. We strongly recommend this variety.

PARRY—Very large, very early. Strong grower, good quality. A hybrid Japanese. A time tested variety bringing top prices.

PARSONS' AMERICAN SWEET—Medium to small. Of the very highest quality. Nearer to quality of Native American than any other except Fuller, which it resembles. Bears well but total weight is not great. Recommended for home use.

PROGRESS—Medium size. High quality. Handsome light color. Very precocious, sets

nuts in nursery row. This hybrid sweet will satisfy the most exacting trade.

ROCHESTER—Above medium size. High quality, good bearer. Matures mid-season. Strong grower. Will bring top prices.

X **QUERCY**—A French Marron of large uniform size. Nut is round and glossy dark rich brown, selling instantly on its appearance. Of the heaviest, consistent bearing. The most precocious bearer we have ever seen. Sets burrs three months from the graft. Matures nuts late and is in prime condition for holiday trade. While this variety is of poorer eating quality than the others listed, it can be counted on to stack up tonnage and profits. Eighty to 90 per cent fall free from the burr. We are improving this variety by selection and those offered this season are the first selection, being larger and more uniform and a greater percentage falling clear of burr.

PRICES OF SEEDLING CHESTNUT TREES

2 Year and 3 year

Caliper inches	Height	Each	Per 10	Per 100
3/4 and up	5 ft. and up	\$1.50	\$13.50	\$125.00
1 1/16 to 3/4	5 ft. and up	1.25	11.50	100.00
X 9/16 to 1 1/16	4 ft. and up	1.15 ←	10.00	90.00
7/16 to 9/16	3 ft. and up	1.00	9.00	80.00
3/8 to 7/16	2 ft. and up	.90	8.00	70.00
1/4 to 3/8	1 1/2 ft. and up	.75	6.00	50.00

Seed from which these trees were grown were taken from grafted trees of the best types. When seed are taken from grafted trees they reproduce the type quite consistently.

3 **FRENCH MARRON**—These are seedlings of the Quercy, one of the best of the large Marrons. (Marron, means large chestnut.)

ITALIAN OR SPANISH—These are seedlings of the European chestnut. They are free and early bearers.

HYBRID—These are from hybrid seed. Crosses of American and European. Trees of this type are likely to produce fine new sorts.

AMERICAN SWEET—This is the native American chestnut of small size and delicious flavor. (Available in last three sizes only).

ALMONDS ON ALMOND AND PEACH ROOTS

	Each	10	100
4 to 6 feet	\$.65	\$5.00	\$40.00
3 to 4 feet	.60	4.50	35.00
2 to 3 feet	.45	3.50	25.00

Drake's Seedling. Ne Plus Ultra.
Nonpareil. Texas Prolific. I. X. L.

BEECHNUTS

AMERICAN. Makes handsome shade or ornamental tree. Does best in rather loose dry soil. Shade the young tree until well established. 1½ to 2 ft. 75c each; \$6.00 per 10.

BUTTERNUTS

Juglans cinerea. The good old butternut so many of us remember gathering in our youth. 3 to 5 ft. 75c each; \$6.00 per 10. 2 to 3 ft. 60c each; \$5.00 per 10.

HICKORY NUTS

SHAGBARK. The sweetest nuts of all. Makes stately shade tree. Small plants 25c each. \$1.50 per 10.

PECANS

Pecans are one of the finest nuts and bring very high prices. We are offering a few select varieties this season. They are all paper shells of highest quality.



	Each	10
3 to 4 ft.	\$3.00	\$27.50
2 to 3 ft.	2.75	25.00

Schley. Considered by many to be the best all round pecan; nut large well filled, thin shell, early and prolific bearer.

Stuart. Nuts large, oblong; dark color; shell of medium thickness, cracking easily. Kernel full, bright colored; very fine quality, rich and sweet; promises to be a good bearer in California.

Success. A large nut, tapering to apex. Thin shell and easily cracked; kernel sweet, rich, plump, filling the shell fully; the best variety for warm interior sections.

NORTHERN CALIFORNIA BLACK WALNUT SEEDLINGS

	Each	10	100
8 to 10 ft.	\$.60	\$5.00	\$40.00
6 to 8 ft.	.50	4.00	30.00
4 to 6 ft.	.40	3.00	25.00
3 to 4 ft.	.30	2.50	20.00
2 to 3 ft.	.25	2.00	15.00

WALNUTS



Columbus

Walnuts succeed on deep rich moist soil. They are steady income producers, and make fine shade trees.

COLUMBUS—Is the surest bearer of all at this frosty elevation. Is nearer blight-proof than any variety we have seen. This season when blight has been the worst ever known all along the Pacific Coast this fine variety had so few blighted nuts that one would be justified in calling it blight-proof. The nuts are uniform as shown, smooth and good color, fine quality and thin shell. A good bearer. This is so fine a variety that we wish everyone to give it a trial and as we have very few trees this season must limit one to an order. One year tops on two year Northern Black roots \$3.50 each.

	Each	10	100
6 to 8 feet	\$1.75	\$15.00	\$125.00
4 to 6 ft.	1.50	12.50	100.00
3 to 4 ft.	1.25	10.00	75.00

Grafted on two year Northern California Black roots.

VROOMAN FRANQUETTE. Very hardy, late blooming. Very large handsome nut of extra fine quality, commanding 5 cents per pound premium.

SAN JOSE MAYETTE. Hardy, late blooming, blight resisting French variety. Nut very large, round and smooth; light attractive color. Meat light color and high quality. Bears young. Will pollenize Franquette and should be planted with it.

EUREKA. Large, smooth, handsome nut of the finest quality. Not as hardy as the above varieties.

PAYNE or Paynes Seedling. Large and good quality. Profitable and heavy bearer. Not as hardy as Franquette and S. J. Mayette.

SEEDLINGS OF FRANQUETTE AND MAYETTE

Some growers are planting these for stocks on which to graft later, calling them the WHITE WALNUT. They will produce fine nuts of themselves without grafting and for shade trees will do as well as grafted trees. Fine for avenue planting.

	Each	10	100
2 to 3 ft.	\$.50	\$4.00	\$35.00
1½ to 2 ft.	.40	3.50	30.00

NORTHERN CALIFORNIA BLACK WALNUT SEED

100 lbs. \$4.00; 50 lbs. of less 6c a pound.

Fruits For Home and Market

Prices For All Except as Noted

	Each	10	100
4 to 6 feet65	\$5.50	\$45.00
3 to 4 feet55	5.00	40.00

APPLE. Gravenstein, Delicious, Red Artrachan, Rome Beauty, Stayman Winesap, Winesap, Winter Banana, Yellow Newtown Pippin.

APRICOT. Moorpark. Tilton.

CHERRY. Royal Ann, Black Tartarian.

FIG. Kadota, Black Mission.

MEDLAR. Small handsome ornamental fruit tree. Fruit size of crab-apple. Said to be valuable remedy for rheumatism. 75c and \$1.00 each.

NECTARINES. White. Orange.

PEACH. Alexander. White freestone. July.

Carman. Fine white freestone. July.

Crawford. Late. Yellow freestone. August.

Elberta. Yellow freestone. August.

J. H. Hale. Large yellow freestone. August.

Oldmixon. Finest yellow freestone. September.

Phillips Cling. Yellow cling. Sept.

Rochester. New yellow freestone.— Highly flavored, rich and juicy.

3¼ ft. size 75c each. Ripens August 10.

DWARF PEAR TREES. Beurre Hardy, Bartlett, Duchess d'Angouleme.

Large trees in bearing each \$1.00; \$8.00 per 10.

PEAR. One year on Japanese and French Roots.

	Each	10	100	1000
6 to 8 ft. \$.75	\$5.00	\$40.00	\$375.00	
4 to 6 ft. .65	4.50	37.50	350.00	
3 to 4 ft. .55	4.00	35.00	300.00	
2 to 3 ft. .45	3.50	30.00	250.00	

Bartlett, Beurre Bosc, Beurre d'Anjou, Comice, Easter Beurre, Winter Nelis.

PERSIMMON

	Each	10	100
4 to 5 ft.	\$1.50	\$12.50	\$100.00
3 to 4 ft.	1.25	10.00	75.00

Hachiya. Large oblong, conical; skin dark bright red; flesh yellow with dark streaks; few seeds; astringent until ripe; of highest flavor. One of the best of the large Japanese varieties.

PLUM. Hungarian. Santa Rosa.

QUINCE. Pineapple. Excellent quality. Strong trees. 75c each.

GRAPES. Table, Raisin and Wine Varieties.

	Each	10	100	1000
No. 1	\$.25	\$1.50	\$7.50	\$50.00

Alicante Bouschet, Muscat, Flame Tokay, Thompson Seedless, Mission, Rose of Peru, Carignan, Malaga, Zinfandel.

NEW VARIETIES

EARLY MUSCAT. A month earlier than common Muscat, far finer flavor. Bunches compact, berries large. Heavy bearer. Just the grape for sections with early autumn frosts, 50c each; \$3.50 per 10; \$25.00 per 100.

AMERICAN VARIETIES

	Each	10	100
Concord, No. 1	\$.25	\$2.00	\$15.00
Isabella No. 125	2.00	15.00
Isabella No. 220	1.50	10.00

BERRY PLANTS

LOGANBERRY, PHENOMINAL BERRY.

CORY'S THORNLESS BLACKBERRY

	Doz.	100
1 year old plants	\$2.00	\$15.00
Tip plants	1.50	10.00

RASPBERRY, sucker plants \$.75 \$5.00

St. Regis Everbearing Red, Cuthbert Red.

LA FRANCE

Giant Everbearing Red Raspberry
Big, Rich, Sweet, Juicy Berries From June Until November

	Each	10	100
Sucker plants	\$.35	\$3.00	\$20.00

STRAWBERRY

	Doz.	100	1000
Price	\$.50	\$2.00	\$18.00

Progressive Everbearing, Oregon Plum.

ASPARAGUS

PALMETTO. The best tasting kind and fit to eat for more than half its length. \$2.50 per 100; \$1.50 per 50, post paid.

RHUBARB

	Each.	Doz.
Wagners Giant	\$.25	\$2.25



Ornamental Shrubs Add Beauty and Charm



LONG the roadway, along the pathway, around the house foundation, for borders and for massing or fillers the hardy deciduous shrubs with their wealth of chaste or gay blossoms should be used in all planting schemes. Constantly changing the landscape picture with bursting buds and flowers in the spring, canopies of foliage and bloom through the summer, bright berries and artistic twig effects in the winter they are a year 'round joy. All are strong two year plants and will give quick effect. Ultimate height of plant is indicated after the name.

Almond. Pink flowering. 6 ft. The beauty of this shrub in the spring is not soon forgotten. Flowers are double and cover the branches. 2 to 3 ft. 75c.

Althea. Rose of Sharon. The brightest and freest blooming shrub in garden during July, August, September. Large showy flowers, which are developed by heavy pruning during winter.

24 to 30 inches. 50c each; \$4.00 per 10.

Lady Stanley. Double light pink with dark red center.

Totus Albus. Large single white about size of Cherokee rose. Very free blooming.

Barberry. Japanese RED-LEAVED. An absolutely new plant. The foliage is a rich, lustrous, bronzy red, similar to richest red-leaved Japanese Maples. This brilliant color is held throughout the summer becoming vivid orange, scarlet and red shades in the fall. This coloring is unequalled by any other shrub and is followed by brilliant scarlet berries, which remain all winter. The wonderful color is best developed in full sun. This barberry is **allowed entry into every state.** Strong two year \$1.25 each; \$11 per 10.

California Coffee. Handsome, hardy native shrub. Leaves green, oblong, glossy, aromatic when crushed. Flowers greenish. Berries shaped like those of coffee, red, turning black. Thrives well in shade. 1½ to 2 ft. 60c; 2 to 3 ft. 75c.

Ceanothus. CALIFORNIA WILD LILAC. (S) 20 ft. Flowers. White. One of our fine native plants. 1½ to 2 ft. 50c each, \$4.00 per 10.

Coral Berry. (Indian Currant; Red Fruited Snowberry). Habit compact. Loaded during fall and winter with a profuse crop of dark red, small berries in dense clusters. 1½ to 2 ft. 50c each; \$4.00 per 10.

Crape Myrtle. Should have a place in every garden. Leaves a bright green, retaining their fresh color all summer; flowers produced in large panicles at ends of branches during the entire season. 20 ft. Shrub or small tree, very smooth bark. Pink. Red. Lavender. 3 to 4 ft. balled, \$2.00. Bare roots 3 to 4 ft. \$1.25; 2 to 3 ft. \$1.00. Potted 75c.

DEUTZIA. Free blooming, shrubs. Bell shaped flowers, spring and early summer. Should be more widely planted in California for their gorgeous color effects in the garden and shrubbery. Two year, all varieties 75c each; \$6.00 per 10.

D. fortunei. 6 ft. Handsome hybrid of strong growth. Flowers are large, single and pure white.

D. gracilis. 3 ft. One of our daintiest and most graceful flowering shrubs. Branches slender and arching, with profusion of small, beautifully formed flowers. Altogether a most charming plant.

D. "Pride of Rochester". Tall growing. Flowers large and double; white, slightly tinged pink.

D. scabra plena (D. crenata rosea plena) 6 ft. Growth like preceding; leaves lighter green. Flowers double; white, tinged rose outside.

DOGWOOD. Cornelian Cherry. A handsome, large, dense-growing shrub, with foliage of graceful shape and pleasing dark green color; bright yellow flowers, borne in great profusion in early spring; give way to oblong berries the size of small olives, which in autumn ripen to a bright scarlet. 4 to 6 ft. \$1.50; 2 to 3 ft. 75c; \$6.50 per 10.

PACIFIC COAST DOGWOOD. Cornus Nuttallii. Splendid shrub for shady places. Flowers large and profuse. The red seed add to its fall beauty when foliage develops its rich red hues. 50c and 75c each.

FILBERT. PURPLE LEAVED. Large shrub with large round leaves, intensely dark, bronzy purple in spring, becoming greenish toward fall. Very distinct even among other purple-leaved trees and shrubs. \$1.50, \$1.00 and 75c each.

FORSYTHIA or Golden Bell. F. viridissima. Of a straggling growth with long, deep green, smooth leaves; blooms just as the leaves unfold with masses of golden bell-like flowers.

F. suspensa. China. 8 ft. Rather tall, but with very drooping branches. Can be trained over arbors.

F. suspensa. Variegated, golden leaves, which attain their color until frost. Flowers deep yellow. All 2 to 3 ft. 50c each. \$4.00 per 10.

HONEYSUCKLE. 10 ft. Compact, much-branched, leafy shrub of pleasing appearance. Bears small, pink flowers of typical Honeysuckle form. Not at all climbing. Also white. 2 to 3 ft. 50c each; \$4.00 per 10.

HYDRANGEA. Large leaved plants with enormous beautifully colored flowers. Worthy of the most extensive cultivation. In the interior valleys they require partial shade, and must be well supplied with moisture to bring out their many fine points.

H. arborescens sterilis. HILLS OF SNOW. 10 ft.—Native American shrub. Of great value for sections too cold for the hortensis sypes. Bare root, 4 ft. 75c each; \$5.00 per 10.

H. hortensis. 8 ft. The most common form in California. Large leaves, practically an evergreen; pink flowers in immense cymes one foot in diameter. Blooms all summer. Potted 50c and 75c.

H. paniculata Grandiflora. Fine for tall hedges, or if planted in rich soil and severely pruned every spring before the leaf buds open, will get to be very dense dwarf clumps of compact form, wonderfully attractive when laden with their massive white plumes. Large buds, kept at a uniform development, are extremely showy; first snowy white, then pink, then reddish bronze and green. August till autumn. Planted rather well back in the intervals between other shrubs, the projecting flower wands arching from the ground are extremely conspicuous and effective.

2 to 3 ft.—50c each; \$4.50 per 10.

18 to 24 in.—40c each; \$3.50 per 10.

LESPEDEZA. A shrub with graceful slender branches; oval, clover-like leaves, and a profusion of purple pea-shaped flowers. Bare root. 3 to 4 ft. 50c each.

LILAC. PURPLE LILAC. The old, best known sort. 1½ to 2 ft. 50c each; \$4.00 per 10; 2 to 3 ft. 75c.

PEARL BUSH. EXOCHORDA. China. 10 ft. Large shrub, blooming early in spring, when entire plant is covered with purest white blossoms. The finest white flowering shrub of early spring. 35c each; \$3.00 per 10.

PRUNUS. P. Persica. Pink flowering Peach. Very double 2 to 3 ft. 75c.

P. Pissardi. Purple leaf Plum. Very desirable. Holds its color all the season. Fruit purple and makes good jam. 4 to 6 ft. \$1.00 each. 3 to 4 ft. 75c each.

P. Pissardi. Moseri. Foliage not so purple as preceding, but flowers are fully double, deep pink. Very fine. 4 to 6 ft. \$1.00 each.

P. Pissardi. Hessei. Foliage, narrow reddish, with yellow border. A shrub, 4 to 6 ft. \$1.00 each.

PHOTINIA VILLOSA. Chinese Xmas berry. A fine deciduous Xmas berry. Foliage turns red and orange. Berries in large clusters, scarlet. 12 to 15 inches, 25c each.

QUINCE. Japonica. SCARLET QUINCE. 8 ft. An old favorite. Flowers brilliant scarlet. Makes an impassable and beautiful flowering hedge. 1 ft. 35c each; 2½ ft. 75c each.

REDBUD. *Cercis* or Judas Tree. *Canadensis* or American Red Bud. Makes a small tree literally covered with small reddish pink pea shaped flowers before the leaves appear. Leaves are unique adding to beauty of the tree. 3 to 5 ft. 75c each; \$6.00 per 10.

CALIFORNIA REDBUD. *Cercis occidentalis*. Same as above only grows much smaller—not over 15 feet, 2 to 3 ft. 50c each; \$4.00 per 10.

Spiraea—Shrubs of free blooming habit, varying in appearance, color of flowers and manner of blooming. All have very small flowers borne in compact clusters of different forms. Do well in any good garden soil. All 50c each; \$4.00 per 10.

S. bumalda (Anthony Waterer). Dwarf but erect form, growing about three feet high. Flowers bright crimson, in flattened heads at end of branches. Blooms about midsummer. Very desirable.

S. cantoniensis (S. reevesi; S. lanceolata). 8 ft. Medium-sized shrub with long narrow leaves. Flowers pure white, large, borne most profusely in dense heads. Practically evergreen.

S. van houttei. Garden hybrid. Moderate size. Branches arching and drooping with weight of flowers, which are borne so freely in spring as to cover plant completely with a mass of snowy bloom. Beautiful and extremely hardy.

SYRINGA MOCK ORANGE

A shrub, with large, handsome foilage and white showy flowers in May and June. Very fragrant with odor of orange blossoms. Well adapted to shrubberies, thriving in any well drained soil. Pruning should be done after flowering.

Mont. Blanc. Fragrant free blooming on slender upright branches. Tall growing. 2 to 3 ft. 50c each; \$4.00 per 10.

Weigela. Desirable free-flowering shrubs. Trumpet-shaped flowers showing a profusion of bloom that is almost unequalled. Their striking foilage contrasts finely with other shrubs; for borders they are very effective. Prune after flowering in the summer. 1 to 1½ ft. 35c, \$3.00 per 10.

D. florida (Weigela rosea). 6 ft. An old favorite and probably still the most popular. Flowers pink, large and borne in utmost profusion.

D. hendersoni. Growth upright and compact. Flowers deep rose.

DECIDUOUS TREES



WHETHER it be Farm Home or City Mansion, School or other public building, its appearance, comfort and beauty can be greatly improved by planting SHADE TREES, SHRUBS and VINES. A fine home requires plants of all kinds to complete the picture———frame it if you will While the humble home assumes dignity with the welcome shade of trees and bowers of flowering shrubs and vines.

Given two residential streets of identical houses; one, tree lined and blended to the landscape by ornamental plants; the other with equally fine houses but bleak and naked of plant life—On which street would you prefer to live?

Albizzia Julibrissin. "Constantinople Acacia": 40-50 ft. A handsome shade and avenue tree highly adapted to California conditions. Fine feathery foilage, pink flowers in great profusion from July to October. Stands winter temperature of 12 degrees. Should be planted everywhere on the Pacific coast. 4 to 5 ft. \$1.00 each; \$9.00 per 10; 3 to 4 ft. 85c each; \$7.50 per 10; 2 to 3 ft. 75c each.

Birch. European White. Splendid lawn tree. Young branches droop. 10 to 12 ft. \$2.00 each; 8 to 10 ft. \$1.50 each; \$13.50 per 10; 6 to 8 ft. \$1.25 each; \$11.50 per 10.

Canoe Birch. Paper white bark. Beautiful small tree. Same prices as above.

Chestnuts. See page ten.

Chestnut. Silver variagated leaf. A rare tree of great beauty. \$1.75 and \$1.50 each.

Cercis or California Red Bud. Small tree or shrub to 15 feet. Branches completely covered in early spring with red peashaped flowers. Very desirable, 2 to 3 feet 50c each; \$4.00 per 10.

Eastern Red Bud. 4 to 6 ft. 75c each; \$6 per 10.

Hawthorn. The handsomest deciduous flowering tree. Of small size and fine habit. The double flowering varieties are a glorious sight in May. If the flowers were inconspicuous, the bright red berries in fall and winter would warrant planting this tree.

Paul's Double Scarlet. Double pink. Double white flowers. Followed by profusion of bright red berries. 6 to 8 ft. \$1.50; 4½ ft. \$1.25; 3¼ ft. \$1.00.

Be sure and include one in your planting.

(Deciduous trees continued on page 22)



Stately Incense Cedar

ABIES. FIR.

A. concolor. **WHITE FIR**. Very beautiful fir; conspicuous on account of its nearly white bark. Growth very regular and symmetrical. Very resistant to drought and heat. 1½ to 2 ft. \$1.50 each; 2 to 3 ft. \$3.50 each.

CHAMAECYPARIS

Trees valuable for garden and park purposes, and in the smaller sizes admirably adapted to porch and interior decorations. Habit varies from almost dwarfs to very large trees.

C. lawsoniana. **LAWSON CYPRESS; PORT ORFORD CEDAR**. 200 ft. Has elegant drooping branches and very slender, feathery branchlets. Potted 1½ to 2 ft. \$1.25 each; \$10.00 per 10.

C. Lawsoniana alumi. "Blue Lawson Cypress". Foliage a bluish, metallic hue; branches close and compact. Its color and symmetrical habit make it one of the most popular conifers. Balled 1½ to 2 ft. \$2.00 each; 15 to 18 inches \$1.75 each. 10 lots 25c less.

C. Lawsoniana argentea. "Silver Lawson Cypress". Graceful habit; foliage silvery; distinct and beautiful. Potted 18 to 20 in. \$1.75 each; \$15.00 per 10.

EVERGREENS*For All Year Beauty*

The cone bearing evergreens are the aristocrats of the garden. It has been truly said that "the love of the conifers is no passing fancy". Whether your place be large or small, conifers will give to it a dignity and charm that no other plant can. As wind-brakes they enfold the home in protective embrace. In groups and backgrounds their various forms and colors bring out the rest of the planting in full effect. As a single lawn specimen or in formal pairs to accentuate the entrance no other tree can take their place. The dwarf growing forms have their place as tub plants and as specimens where small growing elegant plants are required. For year 'round beauty, use the conifer generously.

C. Lawsoniana pendula. "Weeping Cypress". Beautiful tree for specimen planting. Graceful pendulous branches, lustrous silvery-green foliage. Potted 1½ to 2 ft. \$1.25 each. \$10.00 per 10.

C. Lawsoniana erecta viridis. Branchlets stand vertically and close together. Beautiful for individual planting. Balled. 1½ to 2 ft. \$2.50 each.

C. Lawsoniana Nana glauca. Very dwarf globe form. Foliage bluish green. Very choice. Potted. \$3.50 each.

C. Lawsoniana Stewarti. Dwarf growing. Golden foliage of upright graceful habit. Ends of branchlets droop. Very rare, elegant plant. 8 to 12 in. \$2.50 each.

C. Nootkatensis. Also called Nootka Cypress, *Thuyopsis borealis*. We offer variety *Compacta*, a very dwarf soft blue desirable conifer of slow compact growth. Does not burn like *Rosedale Arborvitae*. 12 to 15 inch \$2.00 each.

C. Obtusa-Nana. Dwarf and compact growing. Hinoki cypress. Foliage dark green. Of rare charm. Very scarce. Potted \$4.00 each. Same with tips of new growth. **GOLDEN**. \$5.00 each.

C. Obtusa Letinora Aurea Variegata. Of upright slender graceful growth. Tips of branches golden. A lovable conifer. Potted 12 to 15 inches \$5.00 each.

CEDRUS

C. atlantica. MT. ATLAS CEDAR. Large, pyramidal, open tree. Leaves very slightly glaucous. The hardiest species. Pots. 4 in. 75c.

C. deodara. **DEODAR; INDIAN CEDAR**. This magnificent tree is a picture of grace and beauty. Pyramidal in general outline; the lower limbs lie on the ground, all the upper ones droop gracefully. The foliage of young trees is decidedly glaucous, but not so much so when older. Thrives to perfection in California. Balled 15|18 inch \$1.75 each.

C. libani. CEDAR OF LEBANON. Vigorous growth; wide-spreading, horizontal branches; dark green foliage; massive and picturesque. Closely resembles *C. atlantica*, but grows slower and more compact. Potted 1 ft. 75c; \$6.00 per 10.

CRYPTOMERIA

C. Japonica elegans. 20 ft. Foliage fine and feathery, very compact; in summer a rich green, purplish bronze in winter. 9 very handsome small tree. Potted 2 ft. \$2.00 each.

CUPRESSUS. CYPRESS

Tall or medium sized trees, usually of rapid, erect growth. They thrive in almost any good soil and are useful landscape material for quick and permanent effects.

Arizonica. "Arizona Cypress". Beautiful bluish-green cypress of narrow, pyramidal form. Suitable to the hot dry sections of the interior. Balled 2 to 3 ft. \$1.00 each.

Macrocarpa. "Monterey Cypress". Picturesque native California cypress. Widely planted for hedge, shade trees and wind-breaks. Quart containers; 2 to 3 ft. 50c each; \$4.00 per 10.

MAC NABS CYPRESS. *Macnabiana*. Exceedingly rare in cultivation or in forest. A very beautiful low growing evergreen with reddish brown branchlets and silvery green foliage. Highly suited to rockeries or shallow ledgy ground. Grows quite rapidly. May be pruned to low compact form. If you are a tree lover, include one of these in your order. Potted or balled 12 inches 75c; 12|18 inches \$1.50; 18|24 inches \$2.00; 2|3 feet \$3.00. Larger specimens \$1.50 per foot.

Sempervirens. "Italian Cypress". Tall slender tree, erect branches, having columnar effect. Useful subject for gateways, arches, etc. Balled or potted, 3 to 7 ft. \$1.00 per foot.

JUNIPERUS. JUNIPERS.

The Junipers comprise a splendid collection of small trees. The growth varies from upright to spreading and trailing habit.

Chinensis Pfitzeriana. "Pfitzers Juniper". Very graceful habit; rather low growing, spreading branches; foliage sagegreen. Potted 75c each; 1½ to 2 ft. spread \$2.75 each.

Chinensis. Handsome perfectly hardy Juniper. Compact pyramidal habit. Balled 12 to 18 in. \$1.50 each.

Virginiana. "Red or Virginia Cedar". Conical form, densely branched thickly foliated in deep rich green; valuable for formal work. Balled 1½ to 2 ft. \$1.50.

Excelsa. "Greek Juniper". Very ornamental. Decidedly dwarf and conical in form, densely clothed with blue foliage. A distinct species of great beauty. Balled 12 to 15 inch \$1.50 each.

VARIOUS FORMS OF CONIFERS

- 1 Italian Cypress
- 2 Coast Redwood
- 3 Lawson Cypress
- 4 Dwarf Golden Arborvitae
- 5 Greek Juniper
- 6 *Chamaecyparis obtusa*
Letinora aurea
- 7 Douglas Spruce
- 8 Dwarf Hinok; Cypress
C. obtusa Nana
- 9 MacNabs Cypress
- 10 Blue Lawson Cypress
- 11 Dwarf, Globe Lawson Cypress
- 12 Arizona Cypress



EVERGREENS CONTINUED

LIBOCEDRUS. INCENSE CEDAR

INCENSE CEDAR. (*Libocedrus decurrens*). Small specimens and full grown trees are beautiful. Glossy green foliage. sheds dust. Forms a perfect cone. No more satisfactory evergreen for California conditions. Grows rapidly. Balled 1|1½ ft. \$1.50; 1½|2 ft. \$1.75; 2|3 ft. \$2.50; 3|4 ft. \$3.50; 4|5 ft. \$6.00.

This cedar is best evergreen for orchard windbrakes. For this purpose 6|8 inch plants, bare roots \$10.00 per 100.

Stands drought, heat and frost.

PICEA. SPRUCE

P. Douglasi. DOUGLAS SPRUCE. OREGON PINE. Excepting the Sequoias, our most gigantic tree. Growth erect and very rapid. Very symmetrical. Foliage very soft and rich, dark green. Balled, 2 to 3 ft. \$3.50 each; 3 to 4 ft. \$4.00; Potted \$1.00 each.

P. Pungens. Colorado Blue Spruce. Beautiful compact habit, soft bluish foliage. Very striking as lawn specimen. Balled. \$2.00 per foot.

PINUS. PINE

P. Canariensis. CANARY ISLAND PINE. One of the most beautiful pines. The long leaves, eight to twelve inches in length, are gathered into large tufts all over the tree, giving it decided individuality. Balled 2 to 3 ft. \$1.00 each. \$17.50 per 10.

P. Lambertiana. LAMBERT'S SUGAR PINE. Desirable for home grounds when afforded sufficient space. Leaves bluish glaucous green, clustered towards the ends of the branches; cones 15 to 20 inches long; seeds large and edible. 1½|2 ft. \$1.75; 1 to 1½ ft. \$1.50 each. Potted \$1.00 each.

P. Ponderosa. WESTERN YELLOW PINE. Stout, spreading branches, forming a narrow, spire-like head. Leaves long, dark green. Balled, 1½ to 2 ft. \$1.00 each.

P. Sabiniana. Gray or Digger Pine. Handsome quick growing pine, with long gray needles. Stands drought and heat. Enormous cones with edible nuts are borne when quite young. Balled, 1 to 2 ft. \$2.00; 2 to 3 ft. \$2.75.

RETINISPORA

Plumosa aurea. "Golden Plumed Cypress". Small dwarf spreading tree; foliage plummy and graceful; terminal growths and foliage, bright yellow. Balled, 1 to 1½ ft., \$2.25 each. Potted 8 to 12 inch 50c each.

BABY CHRISTMAS TREES

Send them to shut-ins, old folks, kiddies. Can be planted out doors. About 6 inches high. Post paid 75c each. Smaller size for Christmas dinnertable, 6 for \$3.00 post paid.

SEQUOIA

S. sempervirens. CALIFORNIA REDWOOD. Rapid growth, tapering pyramidal habit. Does well in all parts of California. Makes beautiful avenue or specimen tree. 15 to 20 inches, 75c each. 2 to 2½ ft. \$1.00 each.

TAXUS. YEW

Taxus Brevifolia Nuttali. Western Yew. Beautiful spreading branches, rich dark green foliage. Its irregular growth, drooping branches and coral red berries makes this a most interesting tree. Will grow in shade of large trees. Very rare in cultivation. Will add distinction to your grounds. Potted 1 ft. \$1; 1½ ft. \$2.

THUYA. ARBOR VITAE

A group of very useful, hardy evergreens, thriving in a wide variety of soils and exposures. Many of the formal sorts are successfully used in producing architectural effects. As tub plants they are durable and attractive.

T. Orientalis aurea nana. "Berckman's Dwarf Evergolden Arborvitae". 6 ft. Dwarf habit, compact and symmetrical; branchlets are flattened, tips of which retain their golden tint throughout the year. Wonderfully effective plant for tub or lawn. This is the most popular variety in our entire list of conifers. Balled, bushy specimen plants. 15 to 18 in. \$2.50; 10 to 15 inches \$1.50 each; \$12.50 per 10.

T. Orientalis. Quick growing evergreen highly desirable for formal plants or hedges. Color changes in winter to rich bronze and dull purple effects. Small plants for hedges. 2¼ in. pots \$10 per 100. Bare roots \$7.50 per 100. All about 10 to 12 inches.

T. Occidentalis. AMERICAN ARBOR VITAE. A tree of varying heights; foliage bright green, yellow green beneath. Valuable as a tub plant and as specimens in formal gardening. Tubs 3 to 4 ft. \$5 each.

T. Occidentalis Ellwangeriana aurea. A very low creeping Arbor-vitae of evergolden hue. Valuable for rockeries, 3 inch pots 50c each; \$4.00 per 10.

THUYOPSIS dolobrata. A Japanese Arborvitae of distinct form from the preceding sorts. Foliage dark green above with broad glaucous lines beneath. Develops into handsome broad pyramidal tree. 4 inch pots 6 to 8 inch 60c each.



Select Evergreen Shrubs

Home grounds are greatly improved by use of these evergreens. For planting around the base of dwellings, at entrance walk, in corners and on the lawn they are effective both summer and winter.

We group what are ordinarily called "Broad-Leaved Evergreens" to distinguish them from conifers. They vary in size from the largest trees to the smallest shrubs, but all included here are hard-wooded plants.

Abelia grandiflora. (S) 6 ft. Free-flowering with small, glossy leaves. Flowers an inch long, white flushed pink. Blooms profusely and continuously all summer, 2 to 3 ft. \$1.00 each.

Acacia baileyana. (T) 30 ft. One of the very best. Growth extremely rapid. Intensely glaucous throughout the year. Leaves feathery.

Flowers early in the utmost profusion. Deep golden yellow. A magnificent species.

Acacia dealbata (A. mollissima). SILVER WATTLE. (T) 50 ft. Probably the most popular Acacia in California. Prized for its wonderful freedom of bloom in late winter or early spring. Foliage feathery, varies silvery to green. Flowers clear yellow, very fragrant.

Acacia decurrens. (T) 50 ft. Green Wattle". Grows rapidly into a large, erect tree suited to parks and avenues. 4 to 5 ft. \$1.00; 2 to 3 ft. 75c.

Acacia podalyriaefolia. A rare beautiful tree, large round leaves, canary yellow flowers produced in great profusion about Christmas; foliage beautiful grayish green; hardy and easily grown. Potted, 4 to 5 ft. \$1.25 each.

Arbutus unedo. STRAWBERRY TREE (S.) 10 ft. Moderate-sized shrub, attractive foliage. White flowers in winter months and with them the large, red, strawberry-like fruit of previous season. Very showy and handsome. Balled 24 1/2 inch \$2.00 each.

Arbutus Menziesi. (Madrone) Pacific Coast. (T). Beautiful and distinct native tree. Smooth, ruddy brown bark. White flowers followed by orange red berries. Potted, 50c and 75c each.

Aucuba japonica. GOLD DUST PLANT. (S) 4-10 ft. Leaves almost covered with yellow dots, accounting for the common name. Excellent for tub culture or planting out. Bushy plants, potted, 4 in pot, 75c and 50c each.

Buddleia superba. 8 ft. Tall shrub with arching branches; leaves long and narrow; flowers in drooping panicles; color a bright rose lilac with orange eye; blooms in fall. 85c each.

Buddleia Magnifica (S) 10 ft. Bushy with long spikes purple flowers. Very fine. Potted 75c each.

Balled plants, are shipped with the earth wrapped in burlap. Do not remove it. Plant burlap and all, cutting the top string, but allow the burlap to remain, otherwise the ball might break, causing the loss of the plant.

(S) means shrub. (T) means tree.

Height shown after the name is the ultimate normal height and may take years to attain same.

Berberis Wilsonae. 4 ft. Hardy handsome shrub, small gray green foliage, turning to brilliant red in the fall. Flowers golden yellow, in dense clusters; berries in fall, salmon-red. Balled, 15 to 18 inches, \$1.25 each.

Buxus sempervirens BOXWOOD. (S) 5-10 ft. Compact growth. Leaves small, deep green. Used for low, formal hedges. Can be kept at any size and trimmed into any shape. Cone-shaped, balled, 1 to 1 1/2 ft. \$2.50 each. Globe-shaped, balled, 2 to 2 1/2 ft. \$4.00 each. 8 to 12 inches 50c, \$4.50 per 10.

Coprosma baueri. (S) Low-growing shrub, or can be trained up as a low climber. Leaves are rounded, green and wonderfully glossy; showy, yellow berries. Pots, 1 to 1 1/2 ft. 60c each; \$5.00 per 10.

Cornus capitata. EVERGREEN DOGWOOD. (S) 15 ft. Splendid shrub. Large flowers are cream colored, becoming ruddy before falling, followed by large, red, showy fruits. Potted, 1 1/2 to 2 ft., \$1.25 each. Balled 2 to 3 ft. \$1.75.

Cotoneaster. Handsome shrubs; leaves small, glossy and of varying shades of green; flowers minute, usually white or pinkish; berries of many hues and colors varying from orange to bright scarlet. Unexcelled for grouping, corner effects and for edging large plantings of shrubbery borders.

Cotoneaster horizontalis. (S) 2 ft. One of the best trailing shrubs. Branches grow almost on the ground. Leaves very small and turn red during winter. Flowers pinkish white. Berries bright red in great profusion. Balled, 1 1/2 to 2 ft. \$1.75 each.

Cotoneaster Franchetii. 8 ft. A handsome shrub well meriting its popularity. Upright growth; branches arching; throughout the winter bears numerous small pink flowers. Berries yellowish red. Gallon containers, 2 to 3 ft. \$1.50, 4 in. pots, 1 1/2 to 2 ft. 75c each.

Cotoneaster microphylla. 4 ft. Low growing dense shrub, small round leaves, shining dark green. Berries bright red, borne along the stem. Balled 1 1/2 to 2 ft. \$1.75 each.

Cotoneaster pamosa. "Silverleaf Coton-easter". 8 ft. Possibly the best and most beautiful of this group. Soft gray green, the under sides a silvery color. White flowers in spring followed by great masses of dull silvery red berries, which remain all fall and winter. Fast growing and of graceful loose habit. Potted 18 to 24 inches, 75c each, \$6.00 per ten.

Daphne odora. Japan. 4 ft. Very attractive all the year with its bright green foliage, but its most attractive feature is the intense fragrance of the flowers, which are borne over the bush during winter. Flowers white. Pots 4 to 5 inches, 75c each.

Daphne odora variegata. 4 ft. Identical to the preceding except that it has variegated foliage and pink flowers.

Erica carnea. Heather. Three ft. A low growing shrub of striking form. Numerous short branches densely covered with minute needle-like leaves, bearing an abundance of bright, rosy flowers. Quite hardy. Pots 12 in. 40c.

Euonymus. Admirably useful and attractive when used in groups, edgings, hedges, corner plantings and in rockeries.

E. japonicus albo marginatus. SILVER-MARGINED EVONYMUS. (S) 5 ft. Leaves have a very narrow margin of silvery white. Growth slow and compact. Entirely distinct. 12 to 15 inch 75c each.

E. japonicus aureo variegatus. GOLDEN VARIEGATED EVONYMUS. Branches green; leaves yellow in center, dark green around edges. Color about equally divided. Often sends out branches with green leaves. Balled. 15 to 18 inch. \$1.00 each.

Euonymus japonica viridi-variegata. "Duc de Anjou". Leaves dark green toward the edges, with markings of light green and pale yellow in the center. A strong grower. Balled. 15 to 18 inch \$1.00 each; \$8.50 per 10.

Genista. A fast growing group of shrubs which brighten up the landscape with their brilliant masses of yellow peashaped flowers; valuable as a contrast to solid green shrubbery; unusually hardy and drought resistant.

G. Scoparius. "Scotch Broom". Europe. 6 ft. A very fast growing, erect, bushy shrub with minute leaves and large, yellow, pea-shaped flowers, borne in great profusion in the spring. 3 to 4 ft. 75c; \$5.00 per 10; 2 to 3 ft. 50c; \$3.50 per 10; \$25.00 per 100.

Genista canariensis. A free flowering shrub attaining a height of from 6 to 8 feet. The leaves are small and the bright yellow flowers are produced in great profusion. Potted, 2 to 3 ft. 40c.

Genista hispanica. "Spanish Broom". Spain. 6 ft. Upright growing; flowers yellow, produced on long pendulous, leafless branches. Potted, 2 to 3 ft. 50c; \$3.50 per 10.

Ilex Holly. Prefers a moist and partially shaded situation, which enhances the lustre and brilliancy of foliage and berries. **I. aquifolium.** ENGLISH HOLLY. (T) 40 ft. Berry bearing, grafted plants. Well-known, small tree with leathery, dark green, prickly leaves. Our grafted plants can be depended on to bear berries. 4 inch pots 8 to 12 inch \$1.00. Silver margin leaves. Same size \$1.25 each.

Seedling plants. Balled. 18 to 24 inches \$1.75 each. Potted 8|12 inches 50c each; \$4.50 per 10; \$40.00 per 100. For hedges.

Laurus. P. laurocerasus latifolia. ENGLISH LAUREL; CHERRY LAUREL. (S) 15 ft. Small tree or bush. Glossy, evergreen foliage, beautiful both summer and winter. Can be planted as single specimen or in pairs at gates or entrances. Potted, 2 to 3 ft. \$1.75; 1½ to 2 ft. \$1.50

P. lusitanica. PORTUGAL LAUREL (S) 20 ft. Somber, very dark green leaves. Growth compact. Flowers white. One of the handsomest evergreen shrubs for tu culture. 1 to 1½ ft. Balled \$1.50.

LIGUSTRUM. PRIVET

L. nepalense. "Evergreen Privet". Leaves small and dark green. Splendid as single specimen on hedge. Grows fast. Balled 2 to 3 ft. \$1.00; 18 to 24 in. 75c; 12 to 18 in. 50c; \$4.00 per 10; 8 to 12 in. for hedges \$15.00 per 100.

L. ovalifolium. "California Privet". Esteemed for hedge plants. Forms a compact hedge by occasional pruning; of easy culture. Potted, gallon containers. 2 to 3 ft. 35c each. 18 to 24 in. \$8.00 per 100. 12 to 18 in. \$6.00 per 100.

L. ovalifolium aurea marginatum. Variety of ovalifolium with yellow variegations. 8|12 inch 25c each; \$2.00 per 10; \$15.00 per 100; 18 to 24 inch potted 75c

L. LODENSE. New and as name indicates is low and dense. Can be easily pruned to make low border, one foot to two feet high, either rounded or square. Nearly evergreen in warm climates. Just what you need to edge a walk or border. 8 to 12 inch \$10 per 100; 5 to 8 in. \$8.00 per 100.

Lonicera nitida. China. 3 to 6 ft. A compact shrub with many very small leaves of graceful drooping habit. Likes the sun, very hardy and should be pruned often. Potted 6 to 10 in. \$30.00 per 100; 8 to 12 in. bushy 40c each.

Melaleuca (Bottle Brushes). Hardy shrubs, all fast growers and drought resistant, splendid for large shrubbery. Improved by pruning. Should be largely planted in dry hot locations.

Armillaris (alba). Flowers white, 3 in. spikes, long, slender, needle-like foliage, light green slender, upright graceful growth, 15 ft. Pots 12 to 15 in. 35c.

Nesophila. Oblong flat leaves, erect with the stem, very busy habit, good green color, 10 ft. Purple or lavender spikes. Pots 12 to 15 in. 35c each.

Mahonia aquifolium. OREGON GRAPE (S) 6 ft. Native shrub, medium size, dark green leaves, coppery purple during winter. New growth very glossy. Flowers bright yellow. 1 foot 75c each; \$6.00 per 10.

MAGNOLIA GRANDIFLORA. Ours is variety Lanceolata. Very hardy and will stand snow. Large glossy leaves, flowers 6 inches across. Potted 6 to 8 in. 50c.

MANZANITA. Native California shrub with wine red smooth bark, blue green leaves and Erica like bloom in early spring, followed by dull red berries in profusion. Stands heat and drought. Balled 8 to 12 in. 50c; 12 to 18 in. \$1.00.

Myrtus communis. "Roman Myrtle" Splendid for either single specimens or small hedge. Foliage shining green, highly aromatic. Numerous small white flowers, followed by black berries. Succeeds in hot, dry situations. Potted 8 to 12 in. 40c; \$35.00 per 100.

Myrtus communis variegata. "Variegated Roman Myrtle". A variety of the above with handsomely variegated foliage. Flowers freely. Potted, 8 to 10 inches 50c; \$4.00 per 10.

Nandina domestica. "Japanese Nandina". 5 ft. Beautiful, upright growing, dwarfish shrub. Leaves rich red when young, dark green at maturity, beautiful coppery tones in winter. Thrives in well drained, loamy soil. Fairly hardy. Has showy clusters of small red berries. 10 to 14 in. 75c each.

Photinia arbutifolia. TOYON; CHRISTMAS BERRY; CALIFORNIA HOLLY. 25 ft. Well-known native shrub, brilliant red berries. Thrives admirably under cultivation. 3 in. Pots, 50c each. 4 in. Pots 75c.

Pittosporum tobira. 10 ft. Pretty winter flowering shrub from Japan. Forms a dense, globular head. Flowers, white and fragrant; hardy and easily grown. Balled, 8 to 12 inch. 50c; \$4.50 per 10.

Pyracantha. (Evergreen Hawthorn, Burning Bush) Evergreen shrubs with glossy foliage and showy winter berries. Exceedingly hardy and valuable. Often slightly thorny.

P. coccinea lalandi. (S) 20 ft. Of strong growth, making long shoots that can be trained against a wall if desired. Berries orange yellow. Balled, 2 to 3 ft. \$1.75 each. 1 to 1½ ft. 75c.

P. crenulata. CHINESE EVERGREEN HAWTHORN. (S) 10 ft. Very distinct. Growth is compact, branches slender. The earliest red-berry-bearing shrub, color fully developed by August. Endures considerable shade. Potted, 2 to 3 ft. \$1.

P. crenulata yunnanensis. Splendid form of preceding; growth prostrate and more vigorous; foliage larger and glossy with masses of large bright red berries, which remain on the plant until early spring. Excellent for general ornamental planting; birds do not molest the fruit. Balled 2 to 3 ft. \$1.00; 18 to 24 in. 85c; \$7.50 per 10.

Viburnum. (Laurustinus). Universal favorites used in garden making; thrive in any soil and situation. For borders, aligning walks, and driveways. Handsome as single specimens on lawns.

V. tinus. Lucidum. Grandiflora. (S) Shrub with large shiny, pointed leaves. Flowers in broad heads, pinkish in the bud, white when fully opened. A great hedge plant. 4 inch Pots, 50c each; 5 inch Pots 75c.

Veronica. decussata (S) Rather dwarf. Leaves medium sized and closely set. Flowers large, violet blue. All excellent hedge plant. Balled, 6 to 10 in. 50c.

Veronica. andersoni Hybrid (S). Growth strong and leaves rather long. Flowers violet purple. Very free bloomer. Pots 12 to 14 inch 35c.

Veronica. imperialis. IMPERIAL VERONICA (S). Growth strong and rather spreading. Leaves large, dark green with purple margins and midribs. Flowers amaranth red. Very handsome. Pots 10 to 12 inch.

ROSES

Prices 35c each, \$3.00 per 10, except as noted.

H. T. means Hybrid Tea. T. means Tea.
Dean Hole. Silvery Carmine.

Ed. Mawley. H. T. Dark velvet crimson.

Gen. McArthur. H. T. Brightest crimson.

Jonk. J. L. Mock. H. T. Deep silvery pink.

Killarney. H. T. Flesh pink. Fragrant.

Lady Battersea. H. T. Cherry pink.

Lady Hillingdon. T. Brilliant yellow.

Maman Cochet. T. Rich pink.

Miss Lolita Armour. Deep coral red. 50c.

Orleans. Dwarf for bedding. Geranium red.

Paul Neyron. Deep rose. Very large.

CLIMBING ROSES 50c EACH

Dorothy Perkins. Shell pink. Vigorous.

Cecil Brunner. Rosy pink. Exquisite.

Excelsa. Intense crimson. Glossy leaves

Silver Moon. Creamy white. Splendid.

Sunburst. Coppery orange. Rich tea scent.

DECIDUOUS TREES

(Continued from page 15)

C. Oxyacantha. Single white flowers, finely cut leaves. 4½ ft. 75c; 3¼ ft. 50c. Red Berries in profusion.

Elm. AMERICAN. 120 ft. A magnificent tree. Growth is erect, with smaller branches drooping when old. Grows rapidly here. 6 to 8 ft., \$1.00 each. 4½ ft. 75c each. Cork Elm, same price.

Horse-chestnut. European. 1½ ft. 50c each.

Ash. Oregon. 2 to 3 ft 35c.

Koelreuteria Paniculata, Varnish Tree— An ornamental tree from China. Forms a flat, spreading head, has large pinnate leaves and in July produces immense panicles of orange-yellow flowers. Desirable for its bloom and Autumnal coloring. 2 to 3 feet, 60c each. ,

Laburnum. GOLDEN CHAIN. 20 ft. Beautiful small tree, quick growth. Leaves soft, pleasing green. Flowers fragrant, bright yellow, in long, drooping racemes, suggestive of yellow Wistarias. 1½ to 2 ft. 50c; \$4.00 per 10.

Linden. AMERICAN BASSWOOD. 75 ft. Fine tree of rapid growth forming a fine, broad, round head. Leaves large, light green. 8 to 10 ft. \$1.50 each; 6 to 8 ft. \$1.25 each; 4 to 6 ft. 75c each; 10 lots 25c less.

Locust. COMMON or BLACK LOCUST. 80 ft. Extremely rapid growth. The flowers white, very fragrant. Will flourish where no other tree will succeed. Bare root, 6 to 8 ft. 75c each; \$6.50 per 10; 4½ ft. 60c each; \$5.00 per 10.

Liquidambar. SWEET GUM. 120 ft. Forms large tree, but of slow growth. Leaves star shaped, similar to Maple. The autumn coloring is most gorgeous, surpassing that of any other tree. 2 to 3 ft. 75c each.

Liriodendron. TULIP TREE. 100 ft. Leaves large, rich green. Flowers handsome, cup-shaped, resembling a Tulip; greenish yellow, marked with orange inside. A magnificent tree. 4 to 6 ft. \$1.00 each; \$9.00 per 10; 3 to 4 ft. 75c each; \$6.50 per 10.

Maple. Norway Maple 6½ ft. \$1.25. Scarlet Maple 3½ ft. 75c; Negundo, Box Elder 2 to 3 ft. 50c.

Maiden Hair Tree. Ginkgo. 60 ft. One of the most remarkable trees in cultivation. Leaves fan-shaped, clear green during summer, clear, soft yellow in the fall. Has been preserved from antiquity in grounds about the temples of China and Japan. 12 to 18 in. 50c each.

Parkinsonia. Showy ornamental tree. Bark bright green; foliage feathery. Handsome tree with an abundance of yellow flowers. Thrives in dry soils, medium hardy. 12 to 15 inches 50c.

Poplar. Carolina. Quick growing.

Poplar. Lombardy. Distinctive columnar growth. Both varieties 3 to 5 ft. 50c each.

Sorbus. EUROPEAN MOUNTAIN ASH. 40 ft. Handsome, small tree of erect growth. Flowers white, followed by large, red berries. Very handsome at any season. 3¼ ft. 35c each.

S. domestic. Service Tree. Same as above but with pear shaped fruit. 6 to 8 ft. \$1.00; 3 to 5 ft. 75c.

Climbing Plants

AUSTRALIAN PEA VINE. Handsome climber. Fragrant, purple rose flowers, resembling miniature Sweet Peas. Blooms late winter to midsummer. In 3-inch pots, 35c each; \$2.50 per 10.

BOSTON IVY; JAPAN IVY. Distinct from Virginia Creeper. Foliage dense and glossy. Furnished with small discs, which adhere to brick, stone or wood, turns red in fall. In 3 inch pots 50c each; \$4.00 per ten.

ENGLISH IVY. Very dark green, leathery leaves. Old vines have greenish flowers and black berries in clusters. In 4-inch pots 50c each; 3-inch pots 40c each.

Trumpet Flower. A robust vine; twining tightly with roots along stems. Orange scarlet, flowers cluster at tip of branches. Climbs to great heights on trunks of trees; for every purpose one of the best vines. 2 year 35c each; \$3.00 per 10.

Clematis. Flowers white, fragrant, very small, borne in the greatest profusion during late summer. 75c each.

Cissus Stria. Beautiful evergreen climbing vine, daintily cut leaves. Admirably adapted for covering pillars and light festooning. Potted 75c each.

HALL'S JAPANESE HONEYSUCKLE. Growth strong and dense. Leaves are bright green above, grayish green below. Flowers white, changing to yellow. Fragrant. Strong 2 year. 50c; \$4.00 per 10.

Wistaria. Blue. Panicles about 12 inches long, 1 year 50c; \$4.00 per ten. Handsome for use on pergolas, porches and trellises; attractive foliage, magnificent drooping clusters of pea-shaped flowers.

Plumbago larpentae. "Lady Larpent". A low-growing species of the plumbago; fine for edging or rockeries; flowers intense blue, very showy and unique. 50c.

FERNS, HOUSE PLANTS, PALMS GRASSES, ETC.

Nicely formed plants of the following kinds at 35c, 50c, 75c, \$1.00.

Asparagus Plumosus. LACE FERN.

Asparagus Sprengeri (EMERALD FEATHER FERN).

Nephrolepis "Roosevelt". BOSTON FERN.

Nephrolepis Whitmanii. PLUME FERN

Nephrolepis John Wanamaker. CRESTED.

Woodwardia Ferns. NATIVE OF CALIFORNIA.

PALMS

W. filifera. (California Weeping Palm). Trunk attains diameter of four feet; leaves fan-shaped, with numerous divisions and whitish filaments. Potted 1½ to 2 ft. 60c.

Cordyline australis (*Dracaena australis*; *D. indivisa*) 30 ft. Tropical looking trees with sword-shaped leaves, large panicles white flowers. Often called "Dracaena Palm". 1 foot 50c each. 1½|2 ft. \$1.00.

BAMBOO

Hardy variety growing 10-12 feet tall. Strong clumps, 75c each.

RED HOT POKER

Tritoma Pfitzeri. "Red Hot Poker". An easily grown perennial, producing spikes 3 to 4 ft. high surmounted by blooming heads of rich orange scarlet. Divisions 50c each; \$4.00 per ten.

Thyme. Clumps. 35c.

Mint. Clumps. 25c.

Silver Leaf Grass. 35c.

SCIONS OF WALNUTS CHESTNUTS, FILBERTS

WALNUTS. Vrooman Franquette, Mayette, San Jose Mayette, Eureka, Payne, 100 or more 3½c per scion of 2 buds. Small lots 5c, per scion.

Mammoth, Treyve, Chaberte, Willson Wonder, Alpine, 7c per scion.

FILBERTS. Barcelona, DuChilly, Kentish Cob, Daviana, Red and White Aveline, 5 cents per foot.

Giant de Halles, Imperial, Noce Lunghe, Emperor and twenty other scarce varieties. 10 cents per foot.

CHESTNUTS. Quercy, Nouzillard, Rochester, 5c per scion.

Large American Sweet, 10c per scion.

Parsons' American Sweet, 25c per scion.

We can furnish scions of Fruit Trees.

OWING TO TIME TAKEN IN CUTTING AND PACKING SMALL ORDERS OF SCIONS NO ORDER LESS THAN \$1.00 CAN BE ACCEPTED. PACKING IS INCLUDED IN ABOVE PRICES.



Yucca Protectors

Save your trees from rabbits, borers, sun scald. Not affected by rain. Wire cannot girdle tree as it simply joins the edges of protector as shown.

Length Per 100

	Wght.	100	1000
30 in.	22 lbs.	\$2.50	\$22.00
24 in.	18 lbs.	2.00	19.00
18 in.	13 lbs.	1.75	15.50
16 in.	12 lbs.	1.50	14.00
14 in.	10 lbs.	1.40	13.00
12 in.	9 lbs.	1.30	12.00
10 in.	8 lbs.	1.20	10.50

Lots of 50 take ½ 100 rate plus 20 per cent.

If wanted by Parcel Post, add postage from Los Angeles to your point. Shipping weights shown above.

BOOKS

The Nut Culturist. By A. S. Fuller, Propagation, cultivation, marketing of nut-bearing trees and shrubs. Post paid \$2.00.

Nut Growing. By Robt. T. Morris. Valuable guide, full of practical information and new discoveries about grafting. Post paid \$2.65.

Cyclopedia of Horticulture. By L. H. Valley. New edition in three vol. Full descriptions, information on all plants and their requirements. Profusely illustrated. 3600 pages. Invaluable. Per set \$20.00, not prepaid.

The Cultivated Evergreen. By L. H. Bailey. Deals completely with all conifers and many broad leaf evergreens. Fully illustrated. 400 pages. \$5.00 postpaid.

CALIFORNIA GARDEN FLOWERS

Trees, Shrubs and Vines

By E. J. Wickson

What, when and where to plant. Suggestions and ideas that will fit your beautification plans. \$2.00 postpaid.

PRUNING SHEARS

We have adopted a French make after trying them all. Very fine shear, 9 inch, volute spring. \$3.00 per pair, post paid.

TREE LABELS

Wood painted. 3½ inch; copper wire, 50c per 100; \$4.00 per 1000; post paid.

Sheet Copper. Permanent label for marking trees etc. Copper wire attached. Mark with nail. Ten 50c; 50, \$1.50; 100 \$2.75 post paid.

INDEX

NUT AND FRUIT DEPARTMENT

Almonds	11	Filberts	4-5- 6- 7	Persimmons	12
Apples	12	Grapes	12	Pruning Shears	23
Apricots	12	Hickory Nut	11	Quince	12
Asparagus	12	Labels	23	Raspberries	12
Butternut	11	Loganberries	12	Rhubarb	12
Beechnut	11	Medlar	12	Scions	23
Blackberries	12	Nectarines	12	Tree Protectors	23
Cherries	12	Pecan	11	Strawberry	12
Chestnuts	8- 9-13	Plum	12	Walnuts	11
Figs	12	Peaches	12	Walnut Seed	11
		Pears	12		

ORNAMENTAL DEPARTMENT

Abelia	19	Ferns	23	Oregon Grape	21
Abies—Firs	16	Filbert—Corylus	14	Palms	23
Acacia	19	Firs—Abies	16	Parkinsonia	22
Albizzia	15	Flowering Peach	14	Pearl Bush	14
Ampelopsis	22	Flowering Plum	14	Photinia	14-21
Arbor Vitae—Thuja	18	Flowering Almond	13	Pink Acacia	15
Aucuba	19	Flowering Quince	14	Pinus—Pine	18
Althea	13	Forsythia—Golden Bell	14	Plumbago	22
Arbutus	19	Firethorn	21	Privet—Ligustrum	26
Ash	22	Genista—Broom	20	Prunus—Flowering	
Australian Peavine	22	Ginkgo—Maiden Hair		Peach Plum	14
Bayberry	13-19	Tree	22	Plum Purple Leaf	14
Bamboos and Grasses	23	Golden Bell	14	Pyracantha	21
Betula—Birch	15	Gold Dust Plant	19	Pittosporum	21
Books	23	Golden Chain	22	Pohlar	22
Box—Buxus	19	Hawthorn—Crataegus	15-21	Poker Plant	23
Broom—Genista	20	Hedge Plants	20-18	Quince—Flowering	14
Buddleia	19	Holly—Ilex	20-21	Bed Bud	15
Beech	11	Hydrangea	14	Redwood	18
Bottle Brush	20	Honeysuckle	14-22	Rhamnus	13
Basswood	22	Heather—Erica	20	Retinisora	18
Burning Bush	21	Horse-Chestnut	22	Roses	21
Castanea—Chestnut	15	Ivy—Hedera	22	Rose of Sharon	13
Ceanothus	13	Incense Cedar	18	Roman Myrtle	21
Cedar—Cedrus	17	Japanese Cypress	16	Scotch Broom	20
Cercis—Judas Tree	15	Judas Tree—Cercis	15	Sequoia	18
Cone Bearing Trees	16	Juniperus—Juniper	17	Shade Trees	15-22
Chamaecyparis	16	Koelreuteria	22	Shrubs	13
Christmas Berry	14-21	Laburnum	22	Snowberry—	
Christmas Trees	18	Laurus—Laurel	20	Symphoricarpos	13
Climbing Plants	22	Libocedrus	13	Sorbus	22
Clematis	22	Lilac—Syringa	14	Spiraea	15
Coffee	13	Linden—Tilia	22	Spruce—Picea	18
Coprosma	19	Liquidambar—Sweet		Strawberry Tree	19
Corylus—Filbert	14- 7	Gum	22	Syringa	15
Coral Berry	13	Locust—Robinia	22	Sweet Gum	22
Cotoneaster	19	Lonicera—Honey-		Shade Trees	15-22
Crataegus—Hawthorn	15-21	suckle	20-14	Thyme	23
Crape Myrtle	13	Lespedeza	14	Thorn—Crataegus	15-21
Cryptomeria	17	Laurustinus	21	Thuja—Arbor Vitae	18
Cypress	16-17	Magnolia	21	Tritoma	23
Daphne	20	Madrone Arbutus	19	Trumpet Flower—	
Deciduous Trees	15-22	Mahonia	21	Bignonia	22
Deciduous Shrubs	13	Maiden Hair Tree—		Tulip Tree—	
Deutzia	14	Ginkgo	22	Liriodendron	22
Diervilla—Weigela	15	Manzanita	21	Toyon	21
Dogwood Cornus	14-19	Maple	22	Vines	22
Dracaena	23	Mimosa-Albizza	15	Veronica	21
Erica	20	Myrtle	21	Varnish Tree	22
Evergreens	16-19	Mint	23	Viburnum	21
Elm—Ulmus	22	Mock Orange	15	Wistaria	22
Euonymu — Evergreen	20	Mountain Ash	22	Weigela—Diervilla	15
Exochorda	14	Nandina	21	Yew—Taxus	18

MEMBER



FARM BUREAU

MASSACHUSETTS HORTICULTURAL SOCIETY
WESTERN NUT GROWERS ASSOCIATION