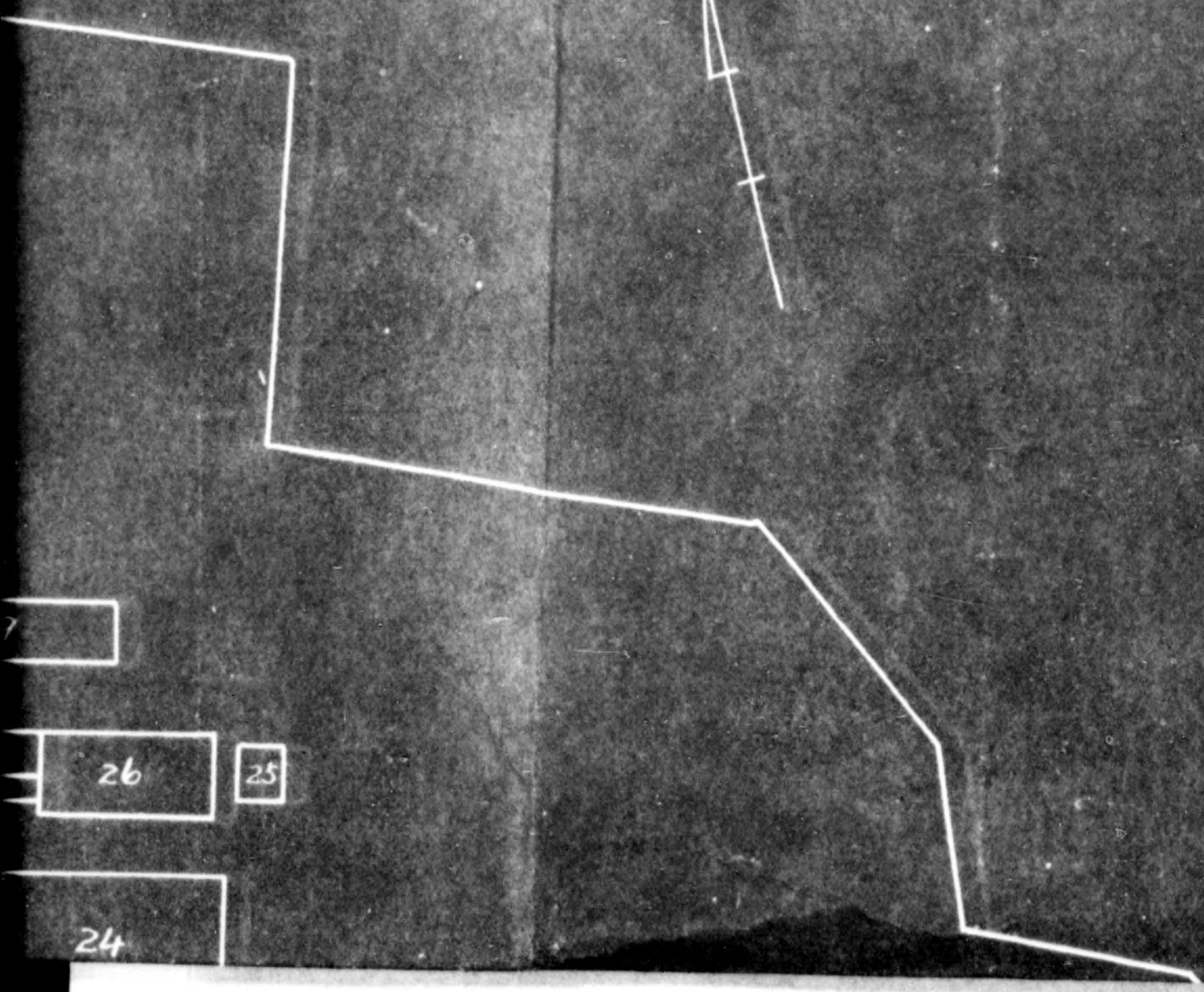


775013

T LAYOUT 1/2

oku K. K. (Fuso Metal Industries L.T.D.) Tsu Kojo
Mie Prefecture
Plant



Exp

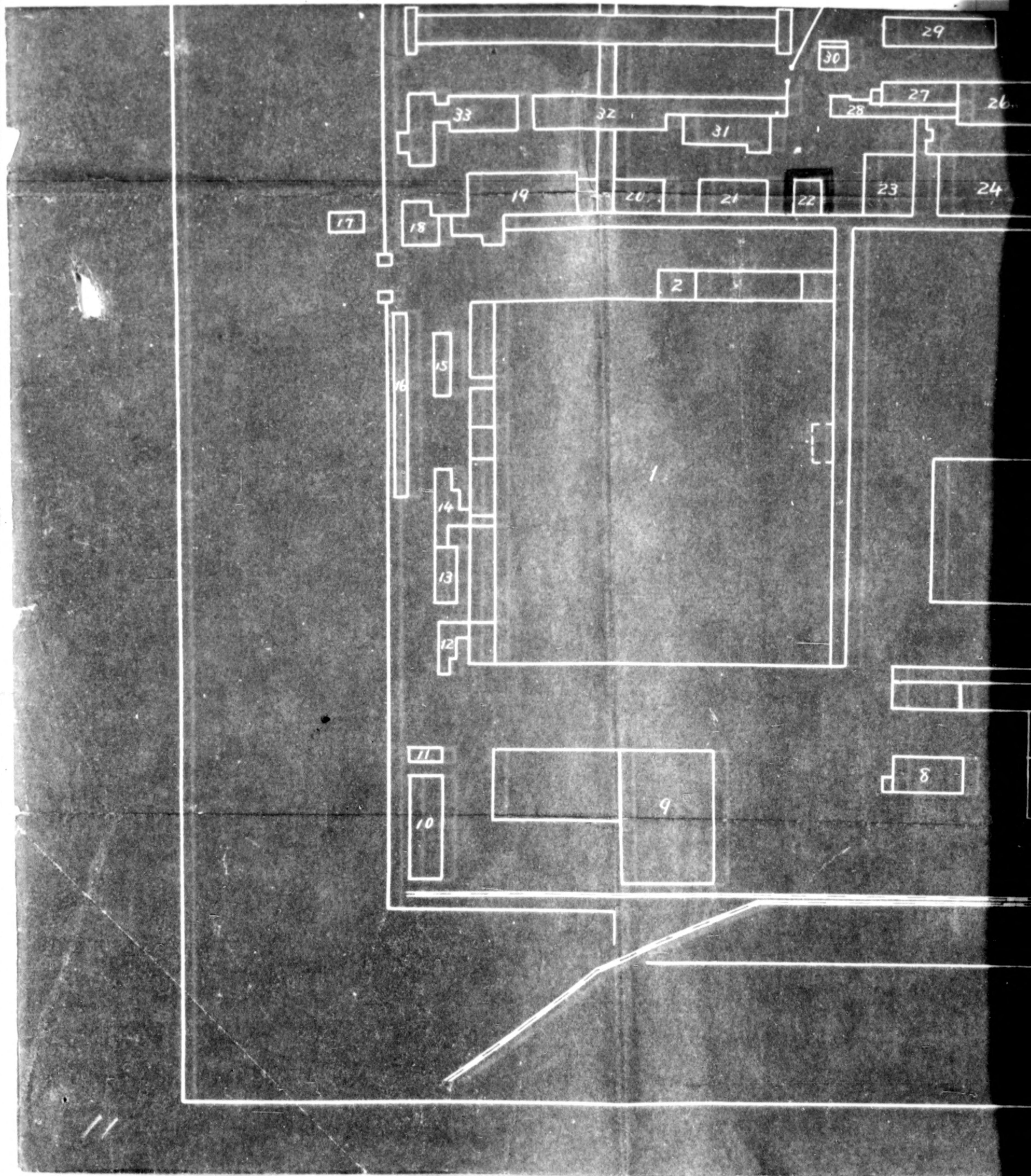
| Bldg. No. | Purp |
|-----------|------|
| 1 | Wor |
| 2 | Sto |
| 3 | Wor |
| 4 | Wor |
| 5 | Sto |
| 6 | Ex-C |
| 7 | Boi |
| 8 | Tra |
| 9 | Wor |
| 10 | Wor |
| 11 | Oil |
| 12 | Wor |
| 13 | Sto |
| 14 | Wor |
| 15 | Wor |
| 16 | Bi |
| 17 | Gar |
| 18 | Gu |
| 19 | Off |
| 20 | Pro |
| 21 | Bat |
| 22 | Sto |

Explanatory Notes

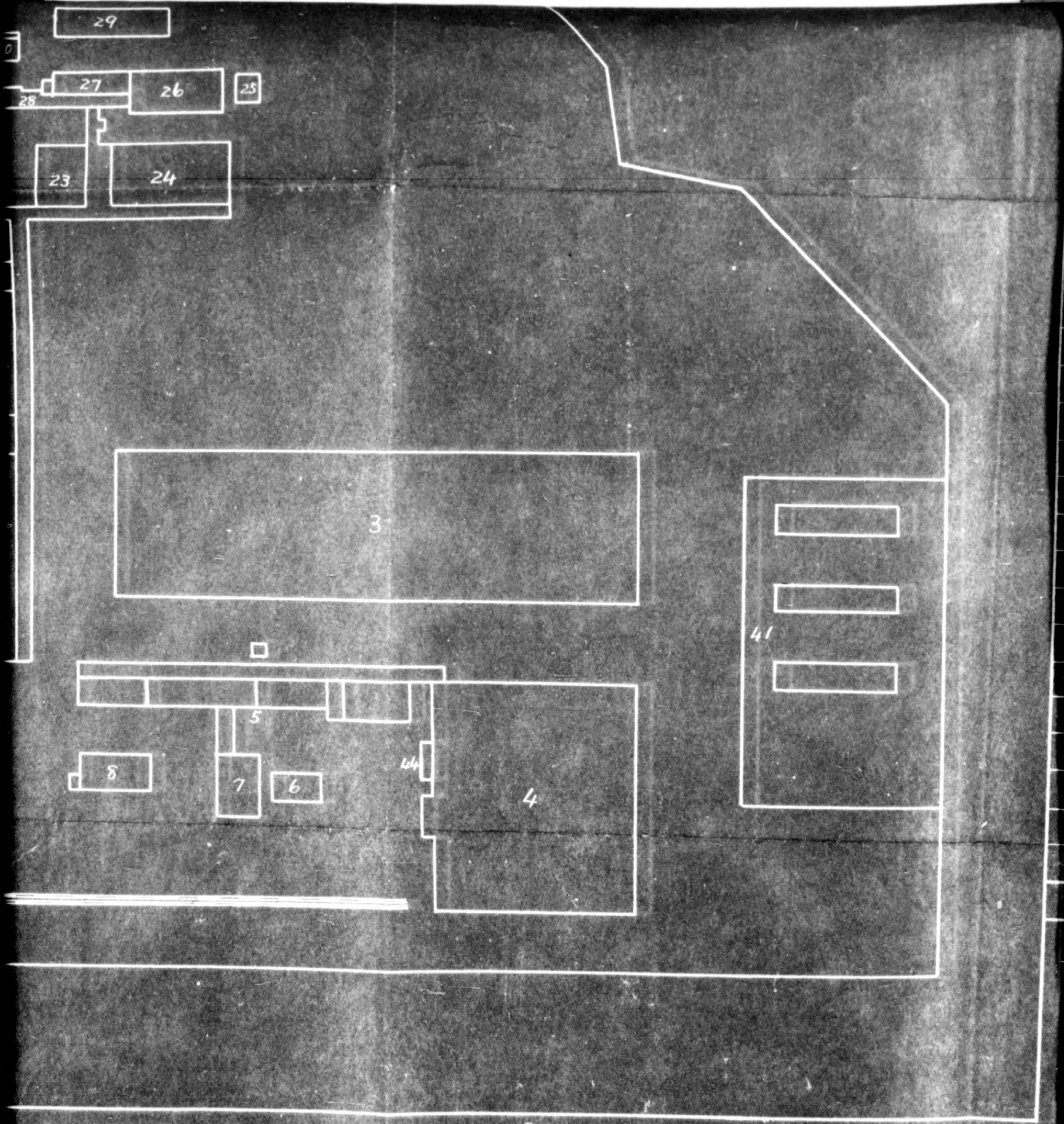
| Bldg. No. | Purpose Use | Area M ² | Remarks |
|-----------|--------------------|---------------------|-------------------------|
| 1 | Work House | 11.344 | Miscellaneous Equipment |
| 2 | Store Room | 373 | Miscellaneous Equipment |
| 3 | Ware House | 4.144 | |
| 4 | Work House | 3.754 | |
| 5 | Store Room | 1.086 | Supplies |
| 6 | Ex-Compressor Room | 1.05 | |
| 7 | Boiler Room | 231 | Integrated Facilities |
| 8 | Transformer Room | 168 | Integrated Facilities |
| 9 | Ware House | 2.808 | |
| 10 | Ware House | 595 | |
| 11 | Oil Room | 59 | |
| 12 | W.C. | 73 | |
| 13 | Store House | 99 | |
| 14 | W.C. | 73 | |
| 15 | W.C. | 63 | |
| 16 | Bicycle Yard | 99 | |
| 17 | Garage | 93 | |
| 18 | Guard Room | 153 | |
| 19 | Office | 664 | |
| 20 | Provisions Store | 270 | |
| 21 | Bath Room | 200 | |
| 22 | Store Room | 87 | |

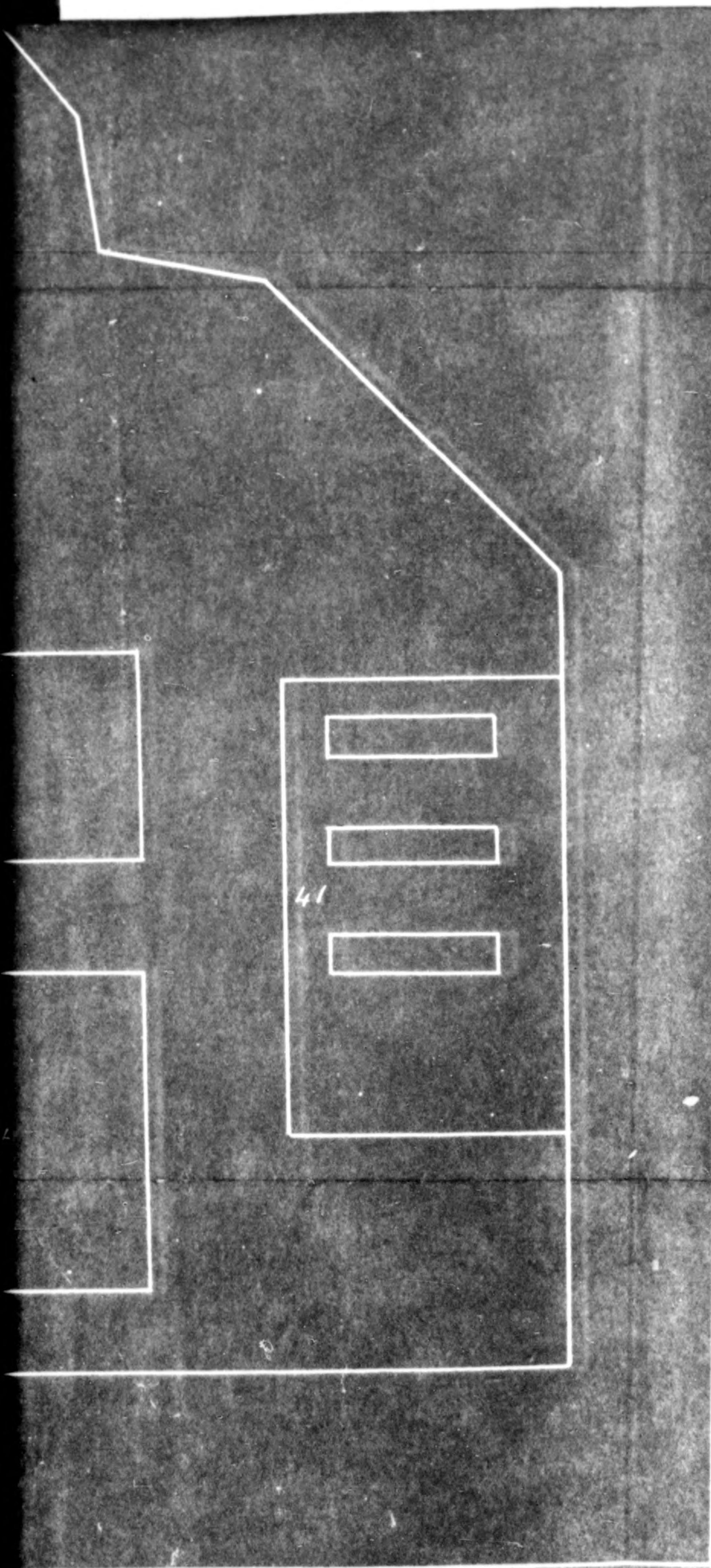
Tsu Kojo

775013



775013





| | | | |
|----|---------------------|-------|-------------------------|
| 18 | Guard Room | 153 | |
| 19 | Office | 664 | |
| 20 | Provisions Store | 270 | |
| 21 | Bath Room | 200 | |
| 22 | Store Room | 87 | |
| 23 | Store Room | 264 | |
| 24 | Dinning House | 661 | |
| 25 | Time-Record Room | 73 | |
| 26 | Office | 297 | |
| 27 | School Room | 198 | |
| 28 | Cloak Room | 127 | |
| 29 | Cloak Room | 354 | |
| 30 | Cooking Boiler Room | 59 | Miscellaneous Equipment |
| 31 | Bath Room | 351 | |
| 32 | Office | 618 | |
| 33 | Medical Room | 351 | |
| 34 | Dormitory | 4,486 | |
| 35 | Guard Room | 149 | |
| 36 | Bicycle Yard | 293 | |
| 37 | Night Duty Room | 165 | |
| 38 | Meeting Room | 99 | |
| 39 | Store Room | 59 | |
| 40 | Store Room | 231 | |
| 41 | Workmen House | 918 | |
| 44 | Exhauster Room | 43 | Miscellaneous Equipment |

Toyo Kogyo K.K.
Ko-2367, Oaza-mochibuku,
Yokkaichi-shi, Mie-ken.

Jan. 25, 1947.

To: Mie Military Government Team.

APPLICATION FOR RELEASE OF REPARATION INSTALLATIONS

1. Location of the property in terms of map number, map scale, and military grid coordinates and the Chome-Cho-Ku address, if known:
Toyo Kogyo K.K.
Ko-2367, Oaza-mochibuku, Yokkaichi-shi, Mie-ken.
A map of the plant attached, map scale 1/2000.

2. Acreage:

Factory site; 2,257 tsubo (80,304.06 square ft) including
1,063 tsubo (37,821.54 square ft) borrowed
from Amikan Fishing Net Manufacturing Co.
Floor space; 928 tsubo (33,018.24 square ft) including
156 tsubo (5,550.48 square ft) borrowed from
Amikan Fishing Net Manufacturing Co.

3. Number and type of buildings:

Wooden buildings; 16, including 4 borrowed from Amikan
Fishing Net Manufacturing Co.
Brick buildings; 2
Total 18.

4. General Description of the whole installation:

Date of construction; 14 July 1938.
Purpose of construction; Manufacture and repair of fishing
net manufacturing machines.
Condition of the installations; Good.
Condition of repairing made; Minor repair of leaky roofs and
modification of entrance and
exit, Japanese materials used.
Necessity for further repair; None.
Extent of necessity; Indispensability 100% in the manu-
facture of fishing net manufactur-
ing machines.

5. Proposed use:

The installations are now being used in the manufacture of fishing net manufacturing machines and general electric motor shafts.

An application for exemption from reparation has been filed through Japanese Government, however, in case the machinery has to be removed from the plant, we are contemplating to use all the available installations for manufacturing fishing nets at our sister plant, Amikan Fishing Net Manufacturing Co.

6. Recommendations:

TOYO KOGYO K.K.

By: M. Takeuchi
Masuzo Takeuchi.
Managing Director.

Toyo Kogyo K.K.

MIS MILITARY GOVERNMENT TEAM
APO 710

10 February 1947

SUBJECT: Application for Exemption from Reparation List.

TO : Director, Toyo Kogyo K.K. (23-14) 2, 367-Ko, Oaza-
Noshifuku, Yokkaichi City, Mie Prefecture.

THRU : Liaison Office, Mie Prefecture.

1. Reference.

a. Subject application, dated 21 Sept 1946.

2. In confirmation of telephone message in November, your application for removal from Reparation List was disapproved.

3. Continued operation is authorized.

ARTHUR G. GEORGE
Major, Inf.
Commanding.

cc: Res. Com. & Industry, Mie Prefecture.

Toyo Kogyo

14 Oct. '46

This company says that
SCAP is to send an answer to
their request thru Liaison
Office - - want us to hold until
an answer is received.
WAB

400.7

MIE MILITARY GOVERNMENT TEAM
APO 710

7 November 1946.

SUBJECT: OI 1/2 Report of Toyo Kogyo K.K. (23-14)**TO :** Commanding Officer, Tokai-Hokuriku Mil. Govt Region, APO 710.
(Attn: Industrial Officer)

1. The following report is submitted in compliance with paragraph "3c" of OI 1/2, Hqs I Corps, dated 20 July 1946.

- a. The machinery in the plant is in good condition.
- b. Proper protective measures to preserve the equipment have been taken.
- c. The management has complied with the provisions of OI 1/2.

2. In view of the facts contained in the attached Check Sheet, it is recommended that this plant be permitted to operate. It is further recommended that this plant remain on the reparations list.

FRANK L. BOCK
Lt. Col., Inf.
Commanding.

3 Inclosures;

- Incl. 1 -- Check Sheet (5 copies)
- Incl. 2 -- Subject company's application for exemption from reparations list (5 copies)
- Incl. 3 -- Request by Governor of Mie Prefecture (5 copies)

BASIC: Ltr. HQ Mie Mil Govt Team, APO 710, dtd 7 Nov 46.
Subj: "Of 1/2 Report of Toyo Kogyo K.K. (23-14)"

1st Ind

GMM/ss

HQ Tokai-Hokuriku Mil Govt Region, APO 710, 12 Nov 46

TO: CG, I Corps, APO 301

1. Forwarded with reference to Section III Par 1 (d) Operational Directive 5/5 Headquarters Eighth Army dated 24 Sept 1946.

2. Continued operation recommended.

FOR THE COMMANDING OFFICER:

FRANK M. WILKINS
 Maj FA
 Adjutant

3 Incl;
 n/c
 lcc w/d

AG 004 - BA

2nd Ind

HHV/ln

HQ I Corps, APO 301.

TO: CG, Tokai-Hokuriku Mil Govt Region, APO 710

1. This headquarters concurs in the recommendation contained in the 1st indorsement.

2. The products of the Toyo Kogyo K.K. are considered to be highly essential to the civilian economy of Japan. Continued operation of this plant is authorized.

BY COMMAND OF MAJOR GENERAL WOODRUFF:

- 3 Incls;
 1. Check sheets (trip)
 2. Application (trip)
 3. Recommendation of prefecture governor (trip)

23846

MG

Tsu, October 14th 1946.

TO : Commanding Officer,
Mie Military Team,

SUBJECT : Toyo Kogyo Kabushiki Kaisha's application for
exception from designation to reparation plant.

1. Name of Firm : TOYO KOGYO KABUSHIKI KAISHA
2. Location : No. 2,387-Ko, Oaza-Mochibuku, Yokkaichi City.
3. Reason for necessitating exception from designation to reparation plant :

(1) Mie prefecture was No. 1 in Japan in manufacturing fishing net before the war and in war-time. Some of fishing net manufacturing factories were forced to convert into other industries in war-time, but after the termination of the war, vigorous exertion has been made for reconstruction of war-damaged factories.

(2) The manufacturing and repairing of net making machines are inevitable for reconstruction of Japanese economy.

(3) Therefore, we are desirous to have the above factory excepted from designation to reparation plant.

(4) The above company will before long submit the formal application for release to SCAP through Japanese Government, in connection of which your kind support is solicited for enabling the company to attain its aim.

(5) We declare the above statement is true and implore your aid in this matter.

T. Sasaki
TOSHIO SAEKI
Governor of Mie Prefecture.

Incl 31

21st November 1946.

Toyo Kogyo K.K.

Tomida-Cho, Yokkaichi City, Mie Prefecture.

Report:

1. The guards are performing their duties efficiently.
2. The electrical wiring system and the buildings are intact.
3. Those machines which are being utilized with permit are in ship-shape condition. Those that are not in use had too then grease so at present they are applying heavier grease.

Toyo Kogyo

12th November 1946.

Toyo Kogyo K.K.

Tomida-Cho, Yokkaichi-Shi, Mie Prefecture.

1. Guards are performing their duties.
2. Electric wiring system is definitely in good shape.
3. All the reparation machines were over hauled and adequately greased with the exception of few machines that are utilized at present, included in the reconversion permit.
4. The building is in tact.

TOYO KOGYO K.K.
2,367-Ko Oaza-Mochibuku,
Yokkaichi City, Mie Prefecture

Sept. 21, 1946

APPLICATION FOR EXCLUSION FROM
CONTROL AND AUTHORIZATION

TO : U.S. Military Governor
THRU : Governor of Mie Prefecture
IN RE: SCAPIN - 153 AG 3876 (13 Aug. 46)

(A) Name of Firm : Toyo Kogyo K.K.

(B) Name of Plant : Toyo Kogyo K.K.

(C) Address:

a. Firm : 2,367-Ko Oaza-Mochibuku, Yokkaichi City,
Mie Prefecture.

b. Plant: 2,367-Ko Oaza-Mochibuku, Yokkaichi City,
Prefecture.

(D) Organization of Firm and Plant, Date of Operation:

a. Date of Organization - Dec 1937

The predecessor of our plant had been organized as the
Machinery Preparing Branch Plant of Amikan Fishing Nets
Manufacturing Company Ltd. 1925

b. Date of Operation - Dec. 1937

(E) History of Plant:

Since organized in 1925, as a branch plant of machinery pre-
paring of Amikan Fishing Nets Manufacturing Company Ltd., (the
oldest Fishing Nets Mfg. Co.), our plant has specialized in
producing hand work and motor Honma netting machines and motor
Kaerumata netting machines; as we expanded, we seceded from
the main firm 1937.

Upon the outbreak of the war, we were forced to stop making
the fishing net machines by the military authority and so
leaving the repair work as it was, we converted into the plant
making machines tools and machinery parts.

When the war was over, we immediately resumed our original
work, manufacturing and repairing fishing net machines, while
a part of the plant is now being used in cooperation with
Fuji Denki Manufacturing Co. and producing electric motor
shafts.

B.B. About one hundred fifty years ago, the predecessor of
our company had started a business as a wholesale dealer
of fishing nets and kept up the business until 1925
when it was reorganized and incorporated into a joint-
stock co., entitling us to be the oldest fishing nets
manufacturing company in our country.

Incl 2'

(F) List of Products and quantity by year (1934-1936):

Our plant was brought into operation 1937, and this list is that of products and quantity at the time when it was operated by the Machinery Repairing Plant of Amikan Fishing Nets Mfg. Co. Ltd., the following is on an approximate basis:

| <u>Year</u> | <u>Motor Kaerumata Netting Machines</u> | <u>Hand and motor Homme netting machines</u> | <u>Total</u> |
|--------------|---|--|--------------|
| 1934 | 110 | 150 | 260 |
| 1935 | 90 | 130 | 220 |
| 1936 | 80 | 150 | 230 |
| Total | 280 | 430 | 710 |

(G) List of Products and Quantity by year (1937-1945):

In the year of 1937, we were engaged in making netting machines fishing net manufacturing machines and their parts, as the Machine Manufacturing Plant of Amikan Fishing Nets Mfg. Co. Ltd.,

| <u>Year</u> | <u>Horizontal Lathe with lead screws (small-sized)</u> | <u>Shaping machines</u> | <u>Slotting machines</u> | <u>Other repair machines</u> | <u>Netting machines</u> | <u>Other machinery & parts</u> |
|--------------|--|-------------------------|--------------------------|------------------------------|-------------------------|------------------------------------|
| 1938 | 10 | - | - | - | 3,500 | - |
| 1939 | 118 | - | - | - | 2,500 | - |
| 1940 | 13 | - | - | 2 Parts | 4,500 | - |
| 1941 | 51 | 4 | 7 | 15 Sets | (18) | - |
| 1942 | 88 | 15 | 3 | 25 Parts | 1,300 | 12,300 |
| 1943 | 1 | 59 | 3 | 10 " | 1,200 | 35,700 |
| 1944 | 6 | 26 | 7 | - | - | 65,700 |
| 1945 | - | 4 | 2 | - | - | 35,000 |
| Total | 282 | 118 | 22 | 52 Parts & Sets | 13,000 (18) | 148,700 Pcs. |

(H) List of Products and Quantity after the war:

a. Production by month

| <u>1946</u> | <u>Repairing motor Kaerumata netting machines</u> | <u>Repairing Homme netting machines</u> | <u>Electric motor shafts</u> | <u>Other electric motor parts</u> |
|--------------|---|---|------------------------------|-----------------------------------|
| <u>Month</u> | | | | |
| Jan. | 4 | - | 400 | - |
| Feb. | 5 | - | 800 | - |
| Mar. | 6 | - | 1,652 | Some quantity |
| Apr. | 8 | - | 1,683 | " |
| May | 8 | - | 1,855 | " |
| Jun. | 8 | - | 1,529 | " |
| Jul. | 12 | 20 | 485 | " |
| Aug. | 15 | 20 | 860 | " |
| Total | 66 | 40 | 9,352 | |

N.B. 1. Repairing motor Kaerumata netting machines is made on the machines damaged by the earthquake and those taken into pieces for delivery by the Enterprise Control Act.

In this operation spent almost the same amount of labour as in making new ones.

2. It is chiefly due to manufacturing big ones that the motor shaft products have decreased since July.

b. Plans for Future Products:

1. Netting machines and accessories, orders received and plans to complete;

| <u>Motor Keerumata netting machines</u> | <u>Orders received</u> | <u>Plans for completing</u> |
|---|------------------------|--|
| Repairing | 120 | By April 1947 |
| Manufacturing | 100 | 5 monthly from Dec. 1946 (the first operation month) 10 monthly from May 1947 |

2. Electric machinery parts:

Fuji Denki Co. Ltd., Mie Branch Plant, is now specializing in making small-sized electric motors, with monthly production of 1,300 at present and 2,000 in future.

Furthermore, they plan to make middle-sized electric motors. This undertaking is to be set on foot within a year.

Henceforth the production plans of our company are as follows:

| <u>Description</u> | <u>Monthly Present production</u> | <u>Monthly Future production</u> |
|-----------------------------------|-----------------------------------|---|
| Motor shafts (small-sized) | 1,100 | 1,500 (gradual increase from Nov. 1946) |
| Motor shafts (middle-sized) | - | 100 (from Oct. 1946) |
| Repairing parts of other machines | 300 | 800 (Gradual increase from Nov. 1946) |
| Pulley | | |
| Base | | |
| End cover | | |

(1) Outline of Equipments:

1. Repairing machines;

| <u>Description</u> | <u>Conditions</u> | | | <u>Total</u> |
|----------------------------|-------------------|--------------------|---------------|--------------|
| | <u>Workable</u> | <u>Un-workable</u> | <u>Rented</u> | |
| Lathes | 56 | - | - | 56 |
| Turret lathes | 2 | - | - | 2 |
| Table lathes | 6 | - | - | 6 |
| Automatic lathes | - | 1 | - | 1 |
| Vertical Drilling machines | 3 | 1 | - | 4 |

| | | | | |
|--|-----------|-----------|----------|------------|
| Radial drilling machines | 1 | - | - | 1 |
| Table drilling machines | 3 | - | - | 3 |
| Horizontal boring and turning machines | 1 | - | - | 1 |
| Universal milling machines with hor. | 3 | - | 1 | 4 |
| Table milling machines with hor. | 6 | - | - | 6 |
| Vertical-spindle milling machines | - | 2 | - | 2 |
| Planing machines | 1 | - | 1 | 2 |
| Shaping machines | 4 | - | - | 4 |
| Slotting machines | 1 | - | - | 1 |
| Universal grinders | 3 | - | - | 3 |
| External grinders (small size) | 2 | 1 | - | 3 |
| Internal grinders (small size) | - | 3 | - | 3 |
| Tool grinders | - | 2 | - | 2 |
| Surface grinders | 1 | - | - | 1 |
| Gear lapping machines | - | 1 | - | 1 |
| Gear cutting machines | 2 | - | - | 2 |
| Hack saws | 2 | - | - | 2 |
| Die sinking machines | - | 1 | - | 1 |
| Bite grinders | 2 | - | - | 2 |
| | <u>99</u> | <u>12</u> | <u>2</u> | <u>113</u> |
| 2. Other machines | | | | |
| Presses | 2 | - | - | 2 |

(J) Principal Products per month itemized:
Percentage to the national output.

| <u>Items</u> | <u>National output</u> | <u>Our output</u> | <u>Percentage</u> |
|----------------------------------|---|-------------------|-------------------|
| Motor Kaerumete netting machines | 35 (including war-damaged machines repaired) | 12 | 30% |
| Motor shafts | 10,000 Shafts (for 10,000 small-sized motors) | 1,100 | 11% |

(K) Reasons why our plant is to be maintained:

1. The mitigative measure to cope with the urgent food conditions of our country depends much upon the increasing of marine products
2. In increasing marine products, the production of fishing nets is the most important requisite.

NB. For the last several years, for want of cotton yarn, the supply of fishing nets is extremely short. Fishing nets which are in use are very scarce and time-worn.

3. Equipments and capacities of fishing nets factories:
Among fishing nets manufacturers of our country, the factories (which equipped with motor Kaerumata netting machines) number only a few, most of which are in Mie Prefecture, and whose capacities run up to approximately 50% of the aggregate production of our country. Most of the equipments of these factories were suffered from the calamity of the earthquake and the war, and their producing capacities are greatly decreased.
4. The improved motor netting machines manufactured in our country are considered to be the most high-powered of all the netting machines which are now being used all over the world.

N.B. Before the war our country exported fishing nets to U.S.A., Canada and all other parts of the world. The fishing nets manufacturers who are equipped with motor Kaerumata netting machines are all in Mie Prefecture.

5. Conditions of Netting machines Productions:
Up to now motor Kaerumata netting machines have been manufactured at the attached plants of the above mentioned few fishing nets companies in Mie Prefecture, which have no specific manufacturing plants of their own. And most of them suffered from the war ravage and the machines are now being used for the expansion of the factories.
Under these circumstances, repairing and assembling works are being undertaken only by the subcontracting plants, so their productive capacities are very small.
Special skill or "Kotsu" is necessary for manufacturing fishing nets. Some of the large factories have begun to produce the netting machines, but they are confined within the range of trial manufacture, and it is impossible to meet the demands for the rapidly increasing production.

6. The characteristics of our products:
Motor Kaerumata broad netting machines with Amiken-shiki (style) automatic stop sets.
- a. Revolution per minute Over 200
 - Latches of a spindle 400
 - A workman Takes charge of 4 machines
 (more than 30,000 meshes per minute can be tied)
 - b. Durability of fishing nets;
 special device for accurate knotting and tear proof are designed.

Numbers of Registration of New Design Patent:

- No. 151,633 - Automatic stop set of netting machine
- No. 151,664 - Net extension machine
- No. 151,665 - Meshes-controlling set of netting machine
- No. 151,667 - Loop set of netting machine

No. 151,945 - Yarn-grip set
 No. 180,520 - Automatic-stop set when cutting warp
 No. 255,462 - Fine mesh-forming set
 No. 256,178 - Stop set of operation by shuttle
 No. 307,914 - Shuttle-prevention set

c. List of Motor Kaerumata Netting Machines for cotton yarn in our country:

| | |
|--|-------|
| Numbers of sets equipped before the war | 980 |
| Numbers of sets lost by the war ravage, earthquake and delivery | 712 |
| Numbers of sets equipped at present | 268 |
| Numbers of sets required for restoration and expansion | 918 |
| Numbers of sets to be equipped when the projected expansion effected | 1,186 |

7. In conclusion:

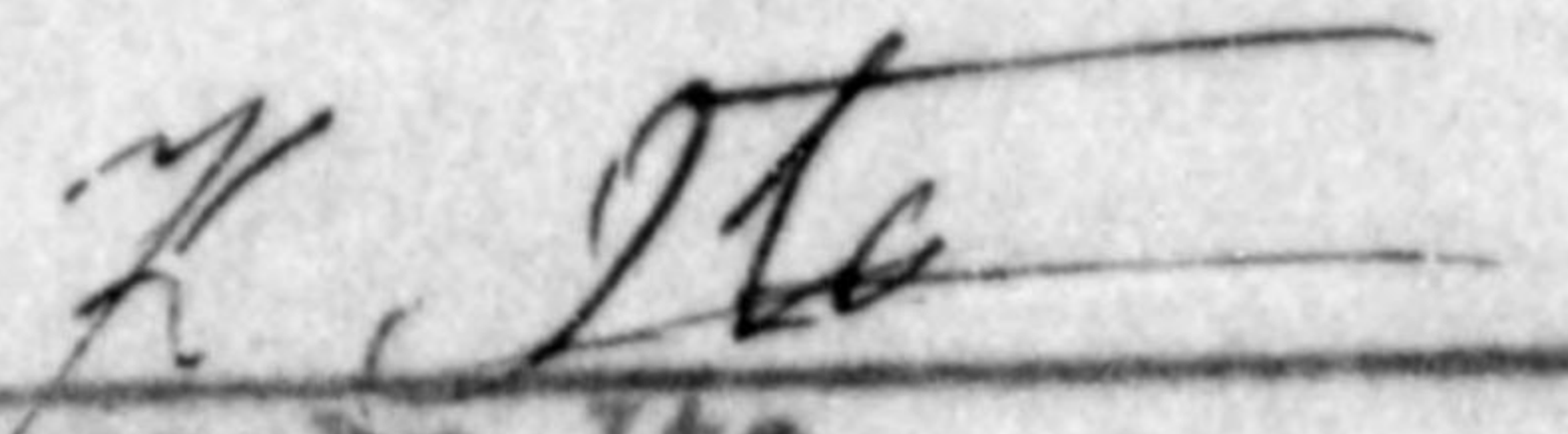
It is urgent that the marine food should be produced more and more in order to solve the food problem of present Japan.

For this purpose, it is indispensable to have much more "Highly Powered Motor Kaerumata Netting Machines" in short time and, in Japan, our firm is the only one that can make these netting machines efficiently both in quantity and speed.

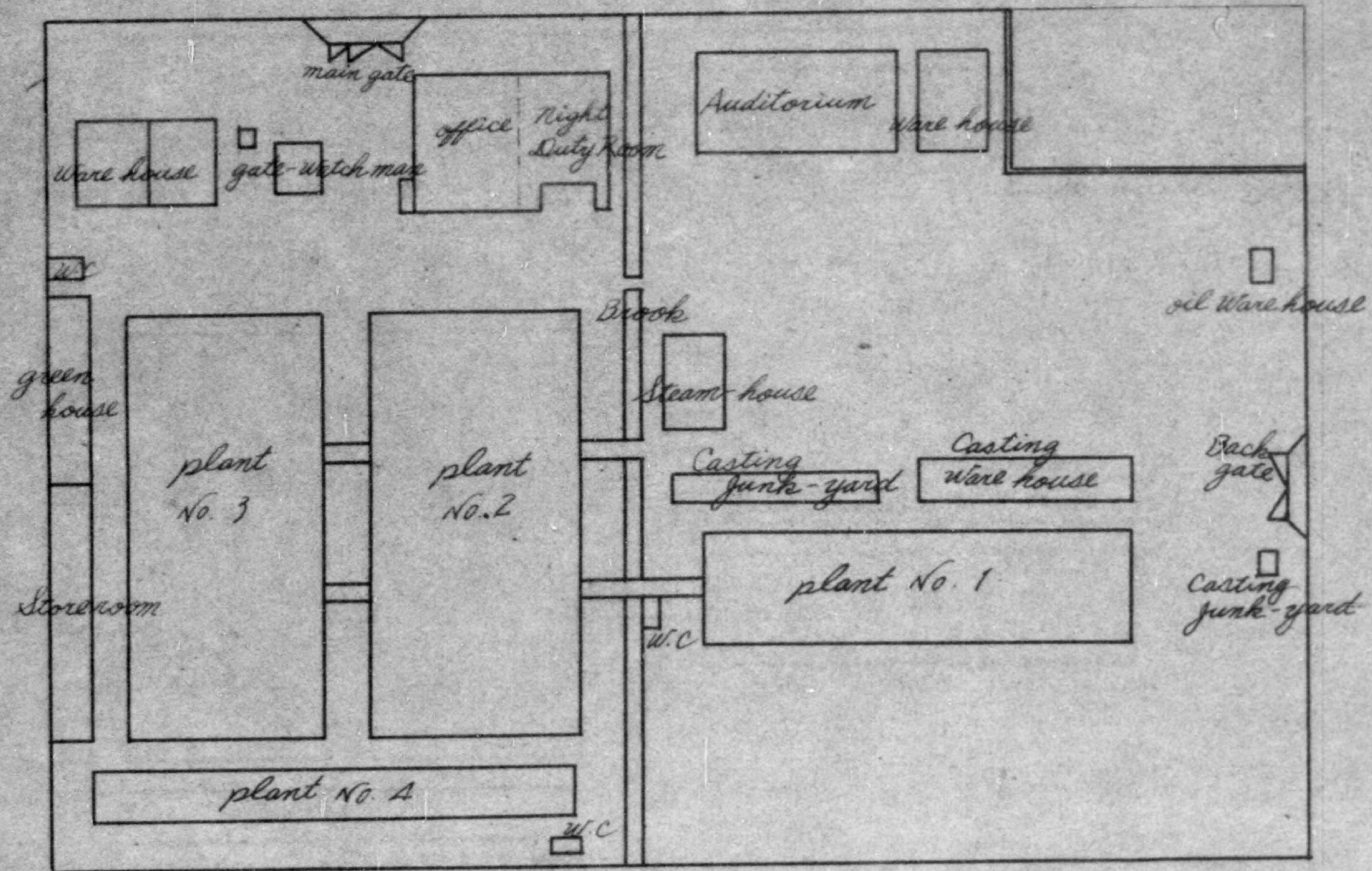
We, therefore, courteously beg you to exclude our firm (Toyo Kogyo Kaisha) from your control as the reparation firm.

TOYO KOGYO K.K.

By:


 Kansaku Ito
 President

Toyo Kogyo ^{K. K.} ~~Manufacturing~~ Co.



AMIKAN FISHING NETS MFG. CO. LTD.
Oaza-Mochibuku, Yokkaichi City,
Mie Prefecture.

15 Sept. 1946

PETITION FOR EXEMPTION
FROM REPARATION PLAN

TO : U.S. Military Government, Mie Prefecture.

THRU: Governor of Mie Prefecture.

Sir;

Our company is the oldest of its kind, and had been engaged in manufacturing fishing nets until Dec. 1944 when the whole plant was crashed by the earthquake and besides we had to deliver our machines and equipments by the Enterprise Control Act, rendering our production almost naught.

After the war, in order to effect rehabilitation, we turned over our sole order to our sister firm, Toyo Kogyo K.K. to manufacture for us some new netting machines and to do repairing works on damaged machines. Up to now, only a part of our order has been executed and we are endeavoring to produce fishing nets to the best of our ability under the stringent condition.

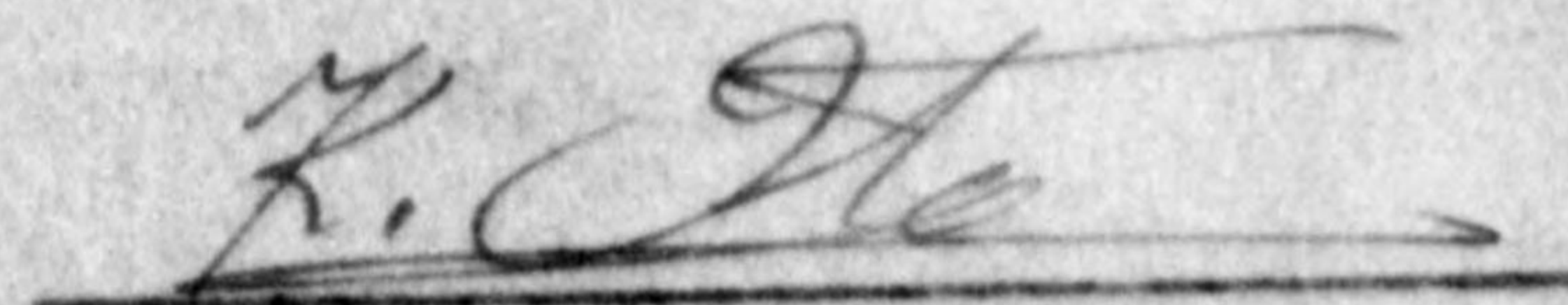
However, it is impossible for us to meet the production ration assigned by the Department of Agriculture and Forestry and the Department of Commerce and Industry, unless our order to Toyo Kogyo K.K. be completely executed.

To improve the present food condition of our country, much depends upon the marine industry which necessitates an increased production of fishing nets machines. The productive capacity in the major firms in our country shows a decrease to 25% compared with that of the pre-war production, having been caused by the earthquake and the war ravage.

It is very regrettable that Toyo Kogyo K.K., a leading firm in characteristic netting machine manufacture, was designated as a custodial firm and is to stop their operation before long, this means not only for us but for the all firms, the bottle-neck in the way of marine production, causing the rehabilitation of their facilities and equipments very difficult.

In view of the above mentioned facts, we courteously beg you to reconsider the matter and kindly release the custody on our plant.

Respectfully yours,

By: 

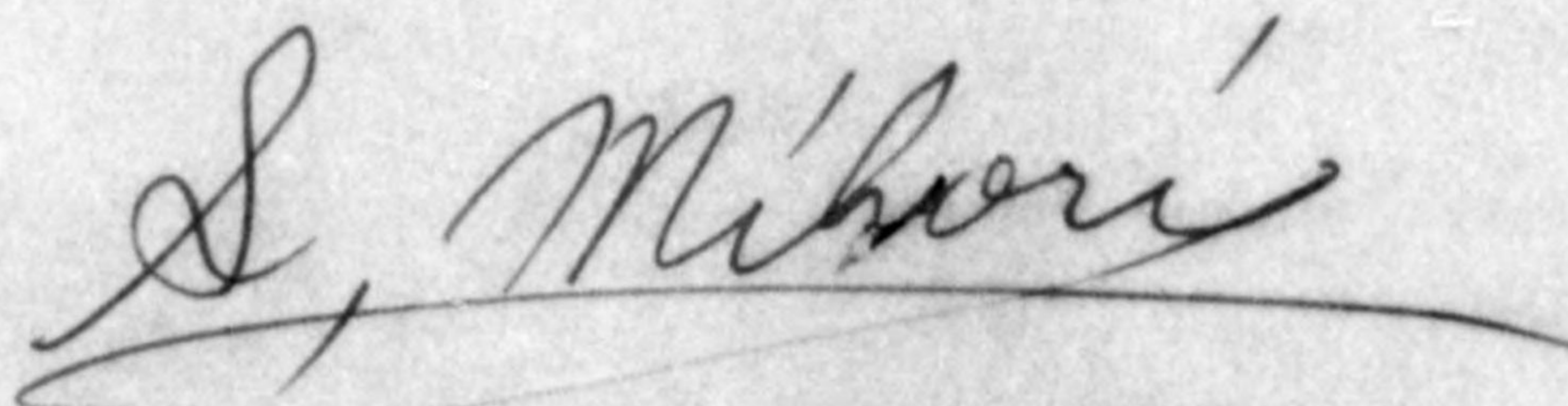
President

Petition for exception from
factories to be appointed for
reparation.

To the Commanding General of the Eighth Army

The undersigned, Mihori Saburo, Director of Fishery Bureau, Agriculture and Forestry Ministry, respectfully requests that you will grant the petition for exception from factories to be appointed for reparation, filed by Toyo Manufacturing Industry Company, which manufactures and repairs netting machines. If the company is taken over by Eighth Army for custody and control, the urgent restoring of fishing nets production to the normal state is much influenced in striving for the rapid perfection of fishing nets.

Respectfully yours



Saburo Mihori
Director of Fishing Bureau,
Agriculture and Forestry
Ministry

Dated : September 17 , 1946.

Toyo Kogyo

Extent of Completion of Machinery under Construction, August 24, 1946.

A. 1. What parts were cast on shapers?

All parts were ready for 15 shapers.

2. Extent of machining on each part.

Machining of parts for 10 shapers were finished, but not yet structured and 5 shapers were not yet machined.

B. 1. What parts were cast on slotters?

All casts were ready for 10 slotters.

2. Extent of machining on each part.

Machinings were finished and were under structuring for 4 slotters, but machinery for 6 slotters were not yet finished.

Number of shapers started since August 24, 1946: None

Number of shapers now on hand: 10 shapers

Percentage of Completion: 80% for 2 shapers, 70% for 3 shapers,
40% for 5 shapers.

Number of slotting machines started since August 24, 1946: None

Number of slotting machines now on hand: 10 slotters

Percentage of completion: 95% for 4 slotters. 40% for 6 slotters.

Number of shapers sold since 13 May 1946:

| <u>Date of shipment</u> | <u>Names and address of purchasers</u> | <u>Quantity</u> |
|-------------------------|--|-----------------|
| De. 5, 1946. | Nippon Chisso-Hiryo K.K. Munekore-cho, Kita-ku, Osaka-shi. | 2 |
| Dec. 10, 1946. | Washino Seiki K.K. (Shoji-bu), Yuwai-dori, Naka-ku, Nagoya-shi. | 1 |
| Jan. 15, 1947. | Nippon Gakki Seizo K.K. 250, Nakazawa-cho, Hamamatsu-shi. | 2 |

Number of slotting machines sold since 13 May 1946: None

TOYO KOGYO K.K.
Ko-2,367, Oaza-mochibuku,
Yokkaichi-shi, Mie-ken.

By: M. Takeuchi
Masuzo Takeuchi.
Plant Manager.

TOYO KOGO K.K.
Ko-2,367 Oaza-mochibuku,
Yokkaichi-shi, Mie-ken.

Sept. 20, 1943.

Order No. 972.

Terms: Partial delivery of goods
to be commenced from
Nov. 1943.

To: Yamaguchi Chuzo-sho.

BILL OF ORDER

| <u>Description</u> | <u>Quantity</u> | <u>Price per ton</u> |
|--------------------------------------|--------------------|----------------------|
| S.20 Shaper Cast Parts. | Amount for 15 sets | ¥550.00 |
| SH.I Vertical Slatter Cast Parts. | " 10 " | 550.00 |

(Wooden Molds supplied)

YAMAGUCHI CHUZO-SHO.
Furukawa, Oaza-higashitomida,
Yokkaichi-shi, Mie-ken.

March 23, 1947.

To: Toyo Kogyo K.K.

STATEMENT OF DELIVERED GOODS

| <u>Date</u> | <u>Description</u> | <u>Qua.</u> | <u>Weight</u> |
|----------------|--------------------------|--------------------|---------------------|
| Nov. 11, 1943. | S. 20 Shaper Cast Parts. | 24 | 102.375Kg. |
| Nov. 15, " | " | 392 | 6,990.563 " |
| Nov. 24, " | " | 395 | 6,255.825 " |
| Dec. 3, " | " | 127 | 2,890.125 " |
| Dec. 9, " | " | 80 | 3,571.185 " |
| Dec. 24, " | " | 175 | 7,953.000 " |
| Jan. 11, 1944 | " | 57 | 1,360.830 " |
| Aug. 19, " | " | 20 | 270.000 " |
| Oct. 14, " | " | 17 | 443.250 " |
| Oct. 26, " | " | 17 | 1,670.250 " |
| Feb. 24, 1945 | " | 5 | 358.075 " |
| | | <u>Total 1,299</u> | <u>31,865.478 "</u> |

I certify that the above statement is true and correct
to the best of my knowledge and belief.

YAMAGUCHI CHUZO-SHO.

By: *N. Yamaguchi*
President.

YAMAGUCHI CHUZO-SHO.
Furukawa, Oaza-higashitomida,
Yokkaichi-shi, Mie-ken.

March 23, 1947.

To: Toyo Kogyo K.K.

STATEMENT OF DELIVERED GOODS

| <u>Date</u> | <u>Description</u> | <u>Qua.</u> | <u>Weight</u> |
|----------------|-----------------------------------|--------------|---------------------------|
| Dec. 24, 1943. | SH.I Vertical Slotter Cast Parts. | 690 | 5,155.125 Kg. |
| Jan. 11, 1944. | " | 222 | 2,081.660 " |
| June 26, " | " | 68 | 458.250 " |
| Aug. 19, " | " | 62 | 2,407.500 " |
| Aug. 18, " | " | 10 | 1,181.250 " |
| Aug. 28, " | " | 15 | 16.875 " |
| Sept. 7, " | " | 24 | 474.750 " |
| Sept. 3, " | " | 68 | 1,173.375 " |
| Sept. 14, " | " | 31 | 278.250 " |
| | | <u>Total</u> | <u>1,190 13,227.035 "</u> |

I certify that the above statement is true and correct
to the best of my knowledge and belief.

YAMAGUCHI CHUZO-SHO.

By: *N. Yamaguchi*
President.

Extent of Completion of Machinery under Construction, August 24, 1946.

A. 1. What parts were cast on shapers?

All parts were ready for 15 shapers.

2. Extent of machining on each part.

Machining of parts for 10 shapers were finished, but not yet structured and 5 shapers were not yet machined.

B. 1. What parts were cast on slotters?

All casts were ready for 10 slotters.

2. Extent of machining on each part.

Machinings were finished and were under structuring for 4 slotters, but machinery for 6 slotters were not yet finished.

Number of shapers started since August 24, 1946: None

Number of shapers now on hand: 10 shapers

Percentage of Completion: 80% for 2 shapers, 70% for 3 shapers, 40% for 5 shapers.

Number of slotting machines started since August 24, 1946: None

Number of slotting machines now on hand: 10 slotters

Percentage of completion: 95% for 4 slotters. 40% for 6 slotters.

Number of shapers sold since 13 May 1946:

| <u>Date of shipment</u> | <u>Names and address of purchasers</u> | <u>Quantity</u> |
|-------------------------|--|-----------------|
| De. 5, 1946. | Nippon Chisso-Hiryo K.K. Munekore-cho, Kita-ku, Osaka-shi. | 2 |
| Dec. 10, 1946. | Washino Seiki K.K. (Shoji-bu), Yuwai-dori, Naka-ku, Nagoya-shi. | 1 |
| Jan. 15, 1947. | Nippon Gakki Seizo K.K. 250, Nakazawa-cho, Hamamatsu-shi. | 2 |

Number of slotting machines sold since 13 May 1946: None

TOYO KOGYO K.K.
Ko-2,367, Oaza-mochibuku,
Yokkaichi-shi, Mie-ken.

By: M. Takeuchi
Masao Takeuchi.
Plant Manager.

TOYO KOGYO K.K.
Ko-2,367 Oaza-mochibuku,
Yokkaichi-shi, Mie-ken.

Sept. 20, 1943.

Order No. 972.
Terms: Partial delivery of goods
to be commenced from
Nov. 1943.

To: Yamaguchi Chuzo-sho.

BILL OF ORDER

| <u>Description</u> | <u>Quantity</u> | <u>Price per ton</u> |
|--------------------------------------|--------------------|----------------------|
| S.20 Shaper Cast Parts. | Amount for 15 sets | ¥550.00 |
| SH.I Vertical Slotter Cast Parts. | " 10 " | 550.00 |

(Wooden Molds supplied)

YAMAGUCHI CHUZO-SHO.
Furukawa, Oaza-higashitomida,
Yokkaichi-shi, Mie-ken.

March 23, 1947.

To: Toyo Kogyo K.K.

STATEMENT OF DELIVERED GOODS

| <u>Date</u> | <u>Description</u> | <u>Qua.</u> | <u>Weight</u> |
|----------------|--------------------------|--------------------|---------------------|
| Nov. 11, 1943. | S. 20 Shaper Cast Parts. | 24 | 102.375Kg. |
| Nov. 15, " | " | 392 | 6,990.563 " |
| Nov. 24, " | " | 395 | 6,255.825 " |
| Dec. 3, " | " | 127 | 2,890.125 " |
| Dec. 9, " | " | 80 | 3,571.185 " |
| Dec. 24, " | " | 175 | 7,953.000 " |
| Jan. 11, 1944 | " | 57 | 1,360.830 " |
| Aug. 19, " | " | 20 | 270.000 " |
| Oct. 14, " | " | 17 | 443.250 " |
| Oct. 26, " | " | 17 | 1,670.250 " |
| Feb. 24, 1945 | " | 5 | 358.075 " |
| | | <u>Total 1,299</u> | <u>31,865.478 "</u> |

I certify that the above statement is true and correct
to the best of my knowledge and belief.

YAMAGUCHI CHUZO-SHO.

By: N. Yamaguchi
President.

YAMAGUCHI CHUZO-SHO.
Furukawa, Oaza-higashitomida,
Yokkeichi-shi, Mie-ken.

March 23, 1947.

To: Toyo Kogyo K.K.

STATEMENT OF DELIVERED GOODS

| <u>Date</u> | <u>Description</u> | <u>Qua.</u> | <u>Weight</u> |
|----------------|-----------------------------------|-------------|--------------------------|
| Dec. 24, 1943. | SH.I Vertical Slotter Cast Parts. | 690 | 5,155.125 Kg. |
| Jan. 11, 1944. | " | 222 | 2,081.660 " |
| June 26, " | " | 68 | 458.250 " |
| Aug. 19, " | " | 62 | 2,407.500 " |
| Aug. 18, " | " | 10 | 1,181.250 " |
| Aug. 28, " | " | 15 | 16.875 " |
| Sept. 7, " | " | 24 | 474.750 " |
| Sept. 3, " | " | 68 | 1,173.375 " |
| Sept. 14, " | " | 31 | 278.250 " |
| | | | Total 1,190 13,227.035 " |

I certify that the above statement is true and correct
to the best of my knowledge and belief.

YAMAGUCHI CHUZO-SHO.

By: M. Yamaguchi
President.

Toyo Kogyo K.K.

BASIC: Ltr, Hq Mie Mil Govt Team, APO 710, dtd 7 Nov 46,
 Subj: "OI 1/2 Report of Toyo Kogyo K.K. (23-14)"

3rd Ind

GNM/ss

Hq Tokai-Hokuriku Mil Govt Region, APO 710, 21 Nov 46

TO: CO, Mie Mil Govt Team, APO 710

For compliance with 2nd Ind.

BY ORDER OF COLONEL BURNELL:

Frank M. Wilkins

FRANK M. WILKINS

Maj FA

Adjutant

3 Incl:
n/c

*Reconversion was not necessary.
 Continued operation will be
 permitted until further orders - mlt*

*23 Jul 46
 9-1-46*

MIE MILITARY GOVERNMENT TEAM
APO 710

7 November 1946.

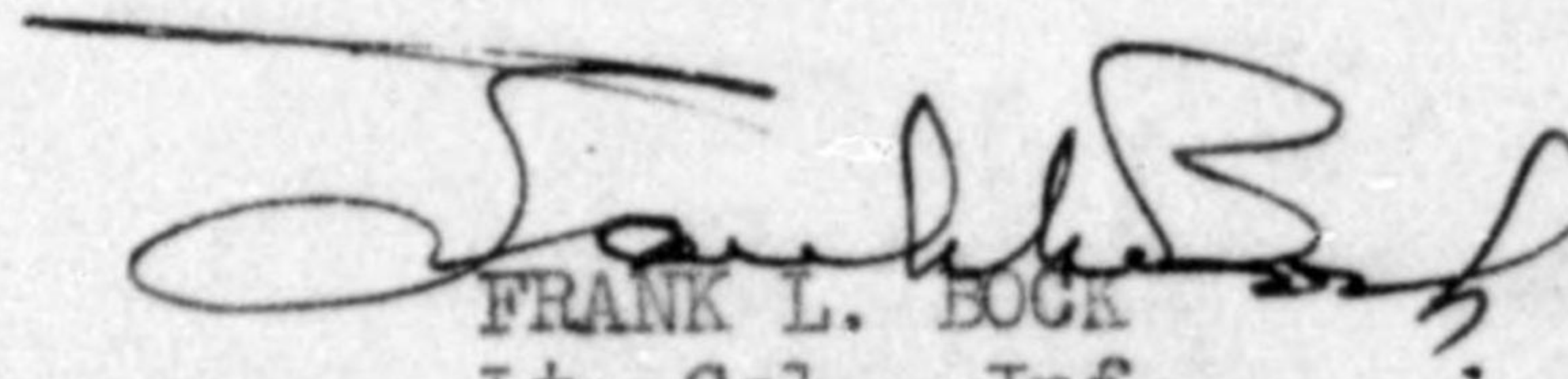
SUBJECT: OI 1/2 Report of Toyo Kogyo K.K. (23-14)

TO : Commanding Officer, Tokai-Hokuriku Mil. Govt Region, APO 710.
(Attn: Industrial Officer)

1. The following report is submitted in compliance with paragraph "3c" of OI 1/2, Hqs I Corps, dated 20 July 1946.

- a. The machinery in the plant is in good condition.
- b. Proper protective measures to preserve the equipment have been taken.
- c. The management has complied with the provisions of OI 1/2.

2. In view of the facts contained in the attached Check Sheet, it is recommended that this plant be permitted to operate. It is further recommended that this plant remain on the reparations list.



FRANK L. BOCK
Lt. Col., Inf.
Commanding.

3 Inclosures:

- Incl. 1 -- Check Sheet (5 copies)
- Incl. 2 -- Subject company's application for exemption from reparations list (5 copies)
- Incl. 3 -- Request by Governor of Mie Prefecture (5 copies)

MIS MILITARY GOVERNMENT TEAM
APO 710

7 November 1946.

SUBJECT: OI 1/2 Report of Toyo Kogyo K.K. (23-14)

TO : Commanding Officer, Tokai-Hokuriku Mil. Govt Region, APO 710.
(Attn: Industrial Officer)

1. The following report is submitted in compliance with paragraph "3c" of OI 1/2, Hqs I Corps, dated 20 July 1946.

- a. The machinery in the plant is in good condition.
- b. Proper protective measures to preserve the equipment have been taken.
- c. The management has complied with the provisions of OI 1/2.

2. In view of the facts contained in the attached Check Sheet, it is recommended that this plant be permitted to operate. It is further recommended that this plant remain on the reparations list.

FRANK L. BOCK
Lt. Col., Inf.
Commanding.

3 Inclosures:

- Incl. 1 -- Check Sheet (5 copies)
- Incl. 2 -- Subject company's application for exemption from reparations list (5 copies)
- Incl. 3 -- Request by Governor of Mie Prefecture (5 copies)

BASIC: Ltr, Hq Mie Mil Govt Team, APO 710, dtd 7 Nov 46,
 Subj: "OI 1/2 Report of Toyo Kogyo K.K. (23-14)"

1st Ind

GNM/ss

Hq Tokai-Hokuriku Mil Govt Region, APO 710, 12 Nov 46

TO: CG, I Corps, APO 301

1. Forwarded with reference to Section III Par 1 (d) Operational Directive 5/5 Headquarters Eighth Army dated 24 Sept 1946.

2. Continued operation recommended.

FOR THE COMMANDING OFFICER:

B-mg
 HQ. I CORPS
 AG 004

Frank M. Wilkins

FRANK M. WILKINS
 Maj FA
 Adjutant

3 Incl:
 n/c
 lcc w/d

AG 004 - BA

2nd Ind

THN/ln

Hq I Corps, APO 301, 16 NOV 1946

TO: CO, Tokai-Hokuriku Mil Govt Region, APO 710

1. This headquarters concurs in the recommendation contained in the 1st indorsement.

2. The products of the Toyo Kogyo K.K. are considered to be highly essential to the civilian economy of Japan. Continued operation of this plant is authorized.

BY COMMAND OF MAJOR GENERAL WOODRUFF:

H. B. Taylor
 H. B. TAYLOR
 MAJOR, A.G.D.
 ASST. ADJ. GEN.

3 Incls:
 1. Check Sheets (trip)
 2. Application (trip)
 3. Recommendation of
 Prefecture Governor (trip)

23846

74 1424

BASIC: Ltr, Hq Mie Mil Govt Team, APO 710, dtd 7 Nov 46,
Subj: "OI 1/2 Report of Toyo Kogyo K.K. (23-14)"

1st Ind

GNM/ss

Hq Tokai-Hokuriku Mil Govt Region, APO 710, 12 Nov 46

TO: CG, I Corps, APO 301

1. Forwarded with reference to Section III Par 1 (d) Operational Directive 5/5 Headquarters Eighth Army dated 24 Sept 1946.

2. Continued operation recommended.

FOR THE COMMANDING OFFICER:

FRANK M. WILKINS
 Maj Adjutant FA

3 Incl:
 n/e
 lcc. w/d

AG 004 - BA

2nd Ind

HHN/ln

HQ I Corps, APO 301. 16 NOV 1946

TO: CO, Tokai-Hokuriku Mil Govt Region, APO 710

1. This headquarters concurs in the recommendation contained in the 1st indorsement.

2. The products of the Toyo Kogyo K.K. are considered to be highly essential to the civilian economy of Japan. Continued operation of this plant is authorized.

BY COMMAND OF MAJOR GENERAL WOODRUFF:

3 Incl:
 1. Check sheets (trip)
 2. Application (trip)
 3. Recommendation of Prefecture Governor (trip)

THE TAYLOR
 MAJOR, A.S.C.
 ASST. ADJ. GEN.

741424

(1)

~~Application for conversion~~
AND
Report on industrial facilities

TO, Military Government Hq & Hq. CO.,
Tsu Department.,

President. Kansaku, Ito.
Toyo Kogyo K.K.,
2367, Mochibuku, Yokkaichi, Miyeken.

Date, May 20th, 1946.

1. Name of Facility, - Toyo Kogyo K. K.,
2. Location, 2367, Mochibuku, Yokkaichi, Miyeken.
3. Name of President, Kansaku, Ito.
4. History.
 - (a) Date of construction, Dec., 1st, 1937.
 - (b) Date of first operation, Dec., 1st, 1937.
 - (c) 1935-41 production, ¥600,000.-
 - (d) Present capitalization, ¥200,000.-
 - (e) Changes made in capital structure since 1935, No changes.
 - (f) Name and address of parent company, parent.
 - (g) Number of shares outstanding, Nothing.
 - (h) Number of stockholders (Give names of those owning 10% or more of total.)

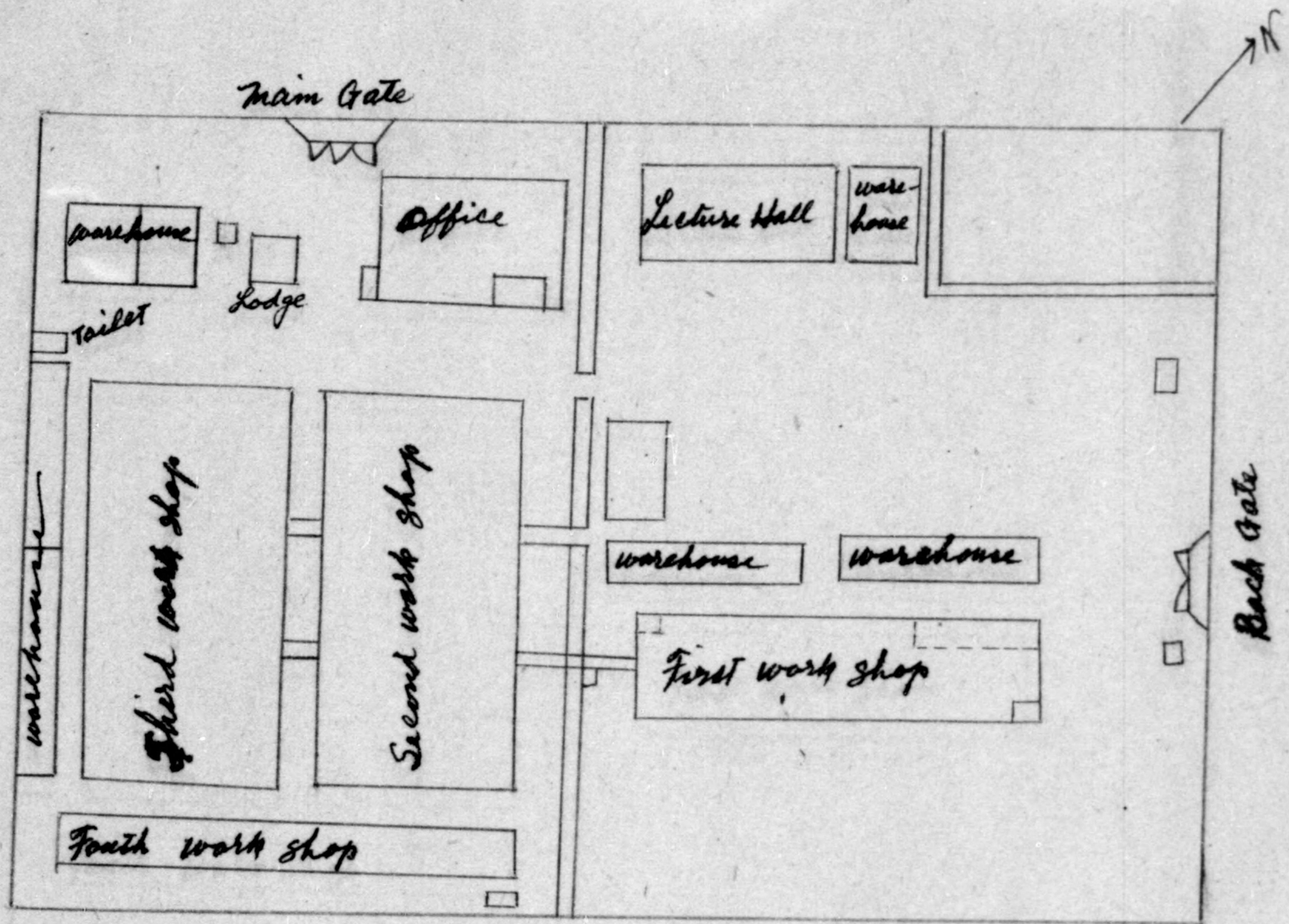
| | | |
|---------------------|--------------|-------|
| Amikan Seimo K. K., | 2,000 shares | 50% |
| Kansaku Ito., | 800 " | 20% |
| Hireshi Ito., | 640 " | 16% |
| Kantaro Ito., | 400 " | 10% |
| Hajime Ito., | 100 " | 2.5% |
| Masa Ito., | 30 " | 0.75% |
| Fuji Ito., | 30 " | 0.75% |

(i) Funds received from Government or Bank,
No received from Government.

Bank loans, Tokai Bank Iwama Branch, ¥375,000.-
Miye Bank Tomida Branch, 30,000.-

(j) On reverse side give outline sketch of plant layout
approximate dimensions.

Outline Sketched of Toyo Kagyo K. K.,



(2)

5. Description,

(a) Principal Products,

(1) War time,
Machinery (Shaping, Slotting machines) and chassis parts.

(2) At present,

Manufacturing & repairing of Netting machines,
Manufacturing & repairing of Machinery,
Motor's shaft.

(3) Undertaking on 1946-47,

Manufacturing & repairing of Netting machines,
Manufacturing & repairing of Machinery,
Motor's Shaft.

(b) Capacity,

(1) War time, ¥1200,000.- (Dec., 1941- Aug., 1945.)
(2) At present, 80,000.- (per month)
(3) Estimation on 1946-47, ¥250,000.- (per month)

(c) Number of Employees,

(1) War time, 131
(2) At present, 53
(3) 1946-47 (at maximum capacity) 100.

6. Machinery & Equipments on plant,

| <u>Description</u> | <u>Quantity</u> | <u>Condition</u> | <u>Ownership</u> |
|--------------------|-----------------|------------------|------------------|
| Lathes | 68 | Good | Toyo Kogyo K.K., |
| Milling machines | 9 | " | " |
| Shaping machines | 5 | " | " |
| Planing machines | 2 | " | " |
| Grinding machines | 12 | " | " |
| Hobbing machines | 2 | " | " |
| Boring machines | 1 | " | " |
| Drilling machines | 8 | " | " |

7. Present stocks of raw materials supplies and unfinished goods,

| <u>Description</u> | <u>Quantity</u> | <u>Condition</u> | <u>Ownership</u> |
|--------------------|-----------------|------------------|------------------|
| Shaping machines | 15 | 30% finish | Toyo Kogyo K.K., |
| Slotting machines | 10 | 50% finish | " |
| Steel | 7,000 kgs. | | " |

8. Present stocks of finished goods,

No finished goods on hand.

(3)

9. Present stocks of Fuel,

| <u>Description</u> | <u>Quantity</u> |
|--------------------|-----------------|
| Coke | 300 kgs. |
| Wood | 30 kgs. |
| Itan | 2,000 kgs. |

10. Machinery & Equipments needed for maximum production 1946-47.,
Enough to present instalments.

11. Raw materials & supplies needed monthly,

(a) For present capacity (5-b-2 above)

| <u>Description</u> | <u>Quantity</u> |
|--------------------|---------------------------|
| Pig Steel | 10,000 kgs. 5,000 kgs. |

(b) For maximum (5-b-3 above)

| <u>Description</u> | <u>Quantity</u> |
|--------------------|----------------------------|
| Pig Steel | 18,000 kgs. 10,000 kgs. |

12. Fuel needed monthly (do not include present stocks),
Coke, 5,000 kgs.

13. Additional persons needed (not locally available),

| <u>Special skills</u> | <u>Numbers</u> |
|-----------------------|----------------|
| No | 0 |

14. Prices (give current selling prices in Yen or principal products),

| <u>Description</u> | <u>unit</u> | <u>Prices</u> |
|--------------------|-------------|---------------|
| Shaping machines | Yen. | ¥50,000.- |
| Slotting machines | Yen. | ¥81,000.- |

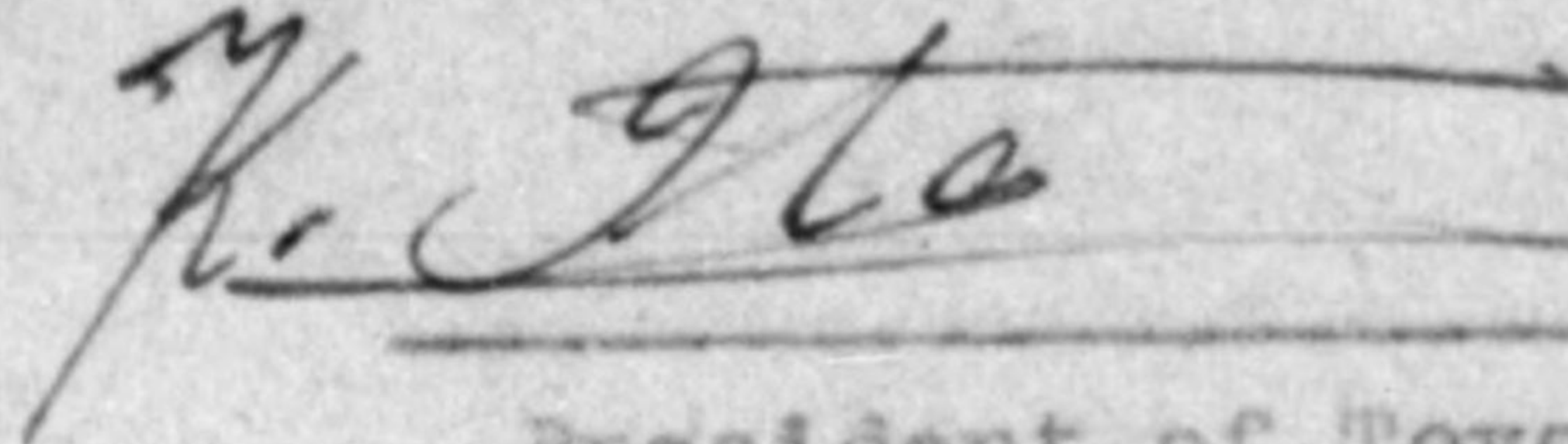
15. Remarks (Include here any factory hampering production not already mentioned and any recommendations you consider necessary).

Can not obtain easily every kinds of steel material,
fuel and oils.

(4)

16. Certification by Applicant.

I certify that the information contained herein is true
to the best of my knowledge and belief.



President of Toyo Kogyo K.K.,

Toyoko Kogyo Co.

Report on status of TOYOKOGYO KABUSHIKI KAISHA on August 24, 1946 when designated as reparation plant.

| Items Manufactured | Status of Progress |
|---------------------------|---|
| Shaping Machine | 10 machines at 60% manufactured 5 machines at 30% manufactured |
| Vertical Slotting Machine | 4 machines at 70% manufactured 6 machines at 40% manufactured |
| Net Knitting Machine | 8 machine being repaired and assembled |
| Shaft for Electric Motor | About 2,000 shafts being manufactured |

I certify that the above report is true and correct.
March 19th, 1947.

Tomohide Okuda
Tomohide Okuda
Chief of Commerce &
Industry Section,
Mie Prefectural Office.

INVENTORY SHEETS

23 - 14

TOYO KOGYO K.K

KO - 2367. MOCHIBUKU YOKKAICHI-SHI MIE-KEN

BORING MACHINES

CLASSIFICATION AND SPECIFICATIONS

| 1 | 2 | 3 | 4 | 5 | 6 | 7 | 8 | 9 | 10 | 11 | 12 | 13 | 14 | 15 |
|--------------------|--|------------|-----------------------------|--|--|-------------------------------------|----------------|---|--------------------|-----------------------|---------------------|--------------|---|----|
| Inventory Code NO. | TYPE | Sub-Type | Dimensions of Boring Bar mm | Maximum Elevation spindle Center to Table surface mm | Table Dimensions (Length and Width or Diameter) mm | Table Feed (Length and Cross) in mm | Swing Diameter | C.S.D of Motor Drive Voltage and Cycles and Horse-Power | Maker's Name | Model No & Serial No. | Year of Manufacture | Weight in KG | Overall Dimensions L - cm W - cm H - cm | |
| IAI-1 | Horizontal Boring and Drilling Machine | Table Type | 64 | 780 | 900 560 | 1070 550 | — | IM.D 220 60 3 | OUYA HEI K.K | Unknown | 1940 est | 3,000 | 350 160 245 | |

775013

DRILLING MACHINES

CLASSIFICATION AND SPECIFICATION

| 1 | 2 | 3 | 4 | 5 | 6 | 7 | 8 | 9 | 10 | 11 | 12 | 13 | 14 | 15 | 16 | 17 |
|--------------------|---------------------------------|----------------|--------------------|---|------------------------------------|-----------------------|--|------------|---|----------------------------|----------------------------|-------------------------------------|--------------------------------------|---------------------|-------------------|-----------------------------------|
| Inventory code NO. | Type | Sub-Type | Number of spindles | Distance Face of Column to center spindle in mm | outside Dimensions of Tables in mm | Column Diameter in mm | Maximum Distance spindle to base in mm | Arm Length | Drilling Capacity in steel or cast iron in mm | Diameter of spindles in mm | Maker's Name | Model No & Serial No. | C.S.D of Motor - volts - cycles - HP | Year of Manufacture | Weight in kg | Overall Dimensions L-CM W-CM H-CM |
| IA3-1 | Radial Drill | Plain | — | 1,030 | 600 1,000 | 200 | 1,600 | 1,080 | — | 35 | SUMITO-SHI TEKKO-SHO | I.M.D 220 60 3 Unknown | 1940 est | 1,800 | 200 100 185 | |
| IA3-2 | Sensitive 2nd Power Fed upright | Single spindle | 1 | 260 | Diameter 400 | 140 | 980 | — | 32 | 32 | HIRAKAWA TEKKO-SHO | I.M.D 220 60 1 Unknown | 1940 est | 650 | 180 80 185 | |
| IA3-3 | Bench Type | Single spindle | 1 | 175 | 310 310 | 75 | 430 | — | 10 | 24 | Unknown | I.M.D 220 160 1 Unknown | 1945 est | 55 | 65 50 80 | |
| IA3-4 | Bench Type | Single spindle | 1 | 175 | 310 310 | 75 | 430 | — | 10 | 24 | Unknown | I.M.D 220 160 1 Unknown | 1945 est | 55 | 65 50 80 | |
| IA3-5 | Bench Type | Single spindle | 1 | 145 | 260 220 | 50 | 240 | — | 10 | 18 | HITACHI SEISAKU -SHO | I.M.D 220 60 1/2 E-4 | 1938 est | 38 | 65 50 80 | |
| IA3-6 | Sensitive 2nd Power Fed upright | Single spindle | 1 | 255 | Diameter 430 | 150 | 990 | — | 32 | 32 | SUZUTA TEKKO-SHO | C.S.D Unknown | 1939 est | 450 | 130 80 190 | |
| IA3-7 | Sensitive 2nd Power Fed upright | Single spindle | 1 | 255 | Diameter 430 | 150 | 990 | — | 32 | 32 | SUZUTA TEKKO-SHO | C.S.D Unknown | 1939 est | 450 | 130 80 190 | |

GEAR CUTTING AND FINISHING MACHINES

CLASSIFICATION AND SPECIFICATIONS

| 1 | 2 | 3 | 4 | 5 | 6 | 7 | 8 | 9 | 10 | 11 | 12 | 13 | 14 |
|--------------------|--|----------------|--------------------|-----------------------------|--------------------------|-------------------------------------|--|------------------|-----------------------|--|---------------------|----------------|--|
| Inventory Code No. | TYPE | Sub-TYPE | Number of Spindles | Maximum Diameter of Work mm | Maximum Width of Work mm | Maximum Diameter of Cutting Tool mm | Types of Gears that can be made on Machine | Maker's Name | Model No Serial No | C.S.D or Motor -volts -cycles -HP | Year of Manufacture | Weight in K.G. | Overall Dimensions L - cm W - cm H - cm |
| IA4-1 | Gear Hobbing Machine | Single Spindle | 1 | 560 | 240 | 120 | SPUR External | HINO SEISAKUSHO | Unknown | C.S.D | 1938 EST | 1.600 | 210 120 200 |
| IA4-2 | Gear Hobbing Machine | Single Spindle | 1 | 240 | 130 | 55 | SPUR External | OUTANI TEKKO SHO | Unknown | C.S.D | 1940 EST | 850 | 130 85 160 |
| IA4-3 | Gear Finishing Machine EXCEPT Grinding | Gear Lapping | 2 | 250 | 80 | 250 | SPUR External | TOYO KOGYO K.K. | Unknown | E.M.O MOTOR MESSDIB | 1942 | 420 | 150 85 120 |

775013

GRINDING MACHINES

CLASSIFICATION AND SPECIFICATION

| 1 | 2 | 3 | 4 | 5 | 6 | 7 | 8 | 9 | 10 | 11 | 12 | 13 | 14 | 15 | 16 |
|--------------------|-------------------------|----------------------|---|---|--|---|--|---|--|----------------------|--------------------------|---------------------|---------------|---|-------------------------------------|
| Inventory Code No. | Type | Sub-Type | Standard Diameter and Width of Grinding wheel in mm | Maximum Diameter of work using standard wheel in mm | Maximum Distance Between Centers in mm | Maximum Diameter and Depth of Hole Ground in mm | Table Traverse Longitudinal cross and vertical in mm | Table or Chuck Surface Dimensions in mm | Maximum Distance Table and standard size wheel in mm | Maker's Name | Model No. and serial No. | Year of Manufacture | Weight in KG. | Overall Dimensions L - cm W - cm H - cm | C.S.D or Motor Volts - cycles - H.P |
| IA5-1 | EXTERNAL Cylindrical | PLAIN | 250 25 | 140 | 400 | — | 450 100 | — | — | TOYO KOGYO K.K | Unknown | 1941 | 310 | 110 87 120 | C.S.D |
| IA5-2 | EXTERNAL cylindrical | plain | 250 25 | 140 | 400 | — | 450 100 | — | — | TOYO KOGYO K.K | Unknown | 1941 | 310 | 110 87 120 | C.S.D |
| IA5-3 | External cylindrical | plain | 250 25 | 140 | 400 | — | 450 100 | — | — | TOYO KOGYO K.K | Unknown | 1941 | 310 | 110 87 120 | C.S.D |
| IA5-4 | Internal cylindrical | PLAIN or chucking | 20 20 | 25 | — | 25 50 | 450 100 | — | — | TOYO KOGYO K.K | Unknown | 1941 | 310 | 110 80 112 | C.S.D |
| IA5-5 | Internal cylindrical | PLAIN or chucking | 20 20 | 25 | — | 25 50 | 450 100 | — | — | TOYO KOGYO K.K | Unknown | 1941 | 310 | 110 80 112 | C.S.D |
| IA5-6 | Internal cylindrical | PLAIN or chucking | 20 20 | 25 | — | 25 0 | 450 100 | — | — | TOYO KOGYO K.K | Unknown | 1941 | 310 | 110 80 112 | C.S.D |

| 1 | 2 | 3 | 4 | 5 | 6 | 7 | 8 | 9 | 10 | 11 | 12 | 13 | 14 | 15 | 16 |
|--------------------------|--------------------------------------|-----------------------|---|---|--|---|--|--|---|---|-------------------------------------|------------------------------|--------------------|--|--|
| Inventory code No. | Type | Sub-Type | Standard Diameter and width of grinding wheel in mm | Maximum Diameter of work using standard wheel in mm | Maximum Distance Between Centers in mm | Maximum Diameter and Depth of Hole Ground in mm | Table Traverse Longitu- dinal Cross Vertical in mm | Table or Chuck Surface Dimen- sions in mm | Maximum Distance Between Table and Standard size wheel in mm | Maker's Name | Model No and Serial No. | Year of Manufac- -ture | Weight in kg | Overall Dimen- sions L-CM W-CM H-CM | C.S.D. Motor -Vols -cycles -HP |
| IA5-7 | Miscell- aneous and Special | N.E.C (Snap Gange) | 180 19 | 100 | — | — | 100 100 | — | — | TOYO KOGYO K.K. | S.G.G | 1941 | 250 | 50 84 109 | C.S.D |
| IA5-8 | External Cylindr- ical | Universal | 250 25 | 180 | 600 | — | 600 200 220 | — | — | ASATANI TEKKO -SHO | Unknown | 1938 est | 290 | 95 90 117 | C.S.D |
| IA5-9 | External cylindr- ical | Universal | 250 25 | 270 | 550 | — | 700 110 | — | — | TOKYO SEIMITSU- KIGU SEISAKU-SHO | No. 1 | 1940 est | 750 | 160 110 145 | C.S.D |
| IA5-10 | External cylindr- ical | Universal | 250 25 | 180 | 450 | — | 600 60 | — | — | TOKYO SEIMITSU -KIGU SEISAKU -SHO | No. 0 | 1940 est | 720 | 150 100 140 | C.S.D |
| IA5-11 | External cylindr- ical | Plain | 300 25 | 320 | 920 | — | 920 180 | — | — | TOYO KOGYO K.K. | Unknown | 1942 | 780 | 190 110 120 | C.S.D |

| 1 | 2 | 3 | 4 | 5 | 6 | 7 | 8 | 9 | 10 | 11 | 12 | 13 | 14 | 15 | 16 |
|-------------------|---------|-----------|---|---|----------------------------------|---|--|-----------------------------------|--|--------------|-------------------------|----------------------|--------------|-----------------------------------|-----------------------------------|
| Inventory code No | Type | Sub-Type | Standard Diameter and width of grinding wheel | Maximum diameter of work using standard wheel | Maximum distance between centers | Maximum Diameter and Depth of Hole Ground | Table Traverse Longitudinal and Vertical | Table or chuck surface Dimensions | Maximum Distance Between Table and Standard Size wheel | Maker's Name | Model No and Serial No. | Year of Manufac-ture | Weight in Kg | Overall Dimensions L-CM W-CM H-CM | C.S. Data Motor -VdLs -cycles -HP |
| IA5-12 | Surface | Recipro- | 200 | | | | 620 | | | YAMAGUCHI | | | | 155 | I.M.D |
| | | acting | | | | | 180 | 425 | | KIKAI | | | | 102 | 220 |
| | | Table | 25 | — | — | — | 250 | 145 | 230 | SHO | Unknown | 1940 | est 1.200 | 180 | 60 2 |
| IA5-13 | Disc | stand | 200 | | | | | | | | | 1938 | | 62 | |
| | | and stand | 25 | — | — | — | — | — | — | Unknown | Unknown | est | 40 | 30 82 | C.S.D |
| | | | | | | | | | | MIZUHO | No. 48474 | 1940 | 65 | 60 55 100 | I.M.D 220 60 1/2 |

LATHES

7

CLASSIFICATION AND SPECIFICATIONS

| 1 | 2 | 3 | 4 | 5 | 6 | 7 | 8 | 9 | 10 | 11 | 12 | 13 | 14 | 15 | 16 |
|--------------------|--------|----------|-----------------------|---------------------------|--------------------------|--------------------|------------------------------|---|-------------------------|--------------------------|-----------------------------------|---------------------|---------------|-----------------------------|----|
| Inventory Code No. | TYPE | Sub-Type | SWING over ways in mm | SWING over carriage in mm | Round Bar capacity in mm | Number of spindles | Length Between Centers in mm | Type of Turret and Diameter of Hole in mm | Maker's Name | Model No. and serial No. | C.S.D or Motor -volts -cycles -HP | Year of Manufacture | Weight in K.G | Overall Dimensions L W H CM | |
| IA6-1 | Engine | Gap | 480 | 310 | — | — | 800 | — | Toyo Kogyo K.K. | Unknown | C.S.D | 1938 | 950 | 224 106 104 | |
| IA6-2 | Engine | Gap | 480 | 310 | — | — | 800 | — | Toyo Kogyo K.K. | Unknown | C.S.D | 1939 | 950 | 224 106 104 | |
| IA6-3 | Engine | Gap | 480 | 310 | — | — | 800 | — | Toyo Kogyo K.K. | Unknown | C.S.D | 1939 | 950 | 224 106 104 | |
| IA6-4 | Engine | Gap | 480 | 310 | — | — | 800 | — | Toyo Kogyo K.K. | Unknown | C.S.D | 1939 | 950 | 224 106 104 | |
| IA6-5 | Engine | Gap | 570 | 360 | — | — | 1,230 | — | HASHIMO -TO TEKKOSHO | Unknown | C.S.D | 1940 est | 1,250 | 284 117 130 | |

LATHES

CLASSIFICATION AND SPECIFICATIONS

| 1 | 2 | 3 | 4 | 5 | 6 | 7 | 8 | 9 | 10 | 11 | 12 | 13 | 14 | 15 | 16 |
|--------------------|----------------------|----------|--------------------------|------------------------------|-----------------------------|--------------------|---------------------------------|--|-----------------|--------------------------|------------------------------------|---------------------|--------------|------------------------------|----|
| Inventory Code No. | Type | SubType | Swing Over ways in mm | Swing Over Carriage in mm | Round Bar Capacity in mm | Number of Spindles | Length Between Centers in mm | Type of Turret and Diameter of Hole in mm | Maker's Name | Model No. and serial No. | CSD or Motor - Volts - cycles - HP | Year of Manufacture | Weight in Kg | Overall Dimensions LWH cm | |
| IA6-6 | Engine and Tool Room | Standard | 400 | 210 | — | — | 800 | — | Toyo Kogyo K.K. | Unknown | C.S.D | 1940 | 950 | 208 80 108 | |
| IA6-7 | Engine and Tool Room | Standard | 400 | 210 | — | — | 800 | — | Toyo Kogyo K.K. | Unknown | C.S.D | 1940 | 950 | 208 80 108 | |
| IA6-8 | Engine and Tool Room | Standard | 400 | 210 | — | — | 800 | — | Toyo Kogyo K.K. | Unknown | C.S.D | 1940 | 950 | 208 80 108 | |
| IA6-9 | Engine and Tool Room | Standard | 380 | 150 | — | — | 600 | — | Toyo Kogyo K.K. | Unknown | C.S.D | 1938 | 580 | 170 84 115 | |
| IA6-10 | Engine and Tool Room | Standard | 380 | 150 | — | — | 600 | — | Toyo Kogyo K.K. | Unknown | C.S.D | 1938 | 580 | 167 83 113 | |

LATHES

CLASSIFICATION AND SPECIFICATIONS

| 1 | 2 | 3 | 4 | 5 | 6 | 7 | 8 | 9 | 10 | 11 | 12 | 13 | 14 | 15 |
|--------------------|----------------------|----------|-----------------------|---------------------------|--------------------------|-------------------|------------------------------|---|--------------------|--------------------------|--------------------------------------|---------------------|--------------|---------------------------|
| Inventory Code No. | Type | Sub Type | Swing over ways in mm | Swing over carriage in mm | Round Bar Capacity in mm | Number of spindle | Length Between Centers in mm | Type of Turret and Diameter of Hole in mm | Maker's Name | Model No. and Serial No. | C.S.D or Motor - volts - cycles - HP | Year of Manufacture | Weight in KG | Overall Dimensions LWH cm |
| IA6-11 | Engine and Tool Room | standard | 380 | 150 | — | — | 600 | — | TOYO KOGYO K.K | Unknown | C.S.D | 1938 | 580 | 163 83 112 |
| IA6-12 | Engine | GAP | 460 | 250 | — | — | 1300 | — | HIRANO SEISAKU SHO | Unknown | I.M.D 220 63 | 1938 est | 1350 | 267 108 122 |
| IA6-13 | Engine | GAP | 500 | 310 | — | — | 1250 | — | TAKAJIRO SEIKO | Unknown | C.S.D | 1938 est | 1200 | 270 100 100 |
| IA6-14 | Engine and Tool Room | standard | 400 | 210 | — | — | 800 | — | TOYO KOGYO K.K | Unknown | C.S.D | 1942 | 950 | 213 80 116 |
| IA6-15 | Engine and Tool Room | standard | 400 | 210 | — | — | 800 | — | TOYO KOGYO K.K | Unknown | C.S.D | 1942 | 950 | 210 80 120 |
| IA6-16 | Engine and Tool Room | standard | 380 | 150 | — | — | 600 | — | TOYO KOGYO K.K | Unknown | C.S.D | 1938 | 580 | 173 85 116 |

DECLASSIFIED E.O. 12065 SECTION 3-402/NNDG NO. 775013

LATHES

CLASSIFICATION AND SPECIFICATIONS

| 1 | 2 | 3 | 4 | 5 | 6 | 7 | 8 | 9 | 10 | 11 | 12 | 13 | 14 | 15 |
|--------------------|----------------------|----------|---------------------------|---------------------------|--------------------------|--------------------|------------------------------|---|-----------------|--------------------------|---|---------------------|--------------|---------------------------|
| Inventory Code No. | TYPE | Sub-Type | Swing over capacity in mm | Swing over carrying in mm | Round Bar capacity in mm | Number of spindles | Length Between Centers in mm | Type of Turret and Diameter of hole in mm | Maker's Name | Model No. and Serial No. | C.S.D. or Motor - volts - cycles - H.P. | Year of manufacture | Weight in kg | Overall Dimensions LWH cm |
| IA6-17 | Engine and Tool Room | Standard | 380 | 150 | — | — | 600 | — | Toyo Kogyo K.K. | Unknown | C.S.D. | 1938 | 580 | 173 77 115 |
| IA6-18 | Engine and Tool Room | Standard | 380 | 150 | — | — | 600 | — | Toyo Kogyo K.K. | Unknown | C.S.D. | 1938 | 580 | 167 84 115 |
| IA6-19 | Engine and Tool Room | Standard | 380 | 150 | — | — | 600 | — | Toyo Kogyo K.K. | Unknown | C.S.D. | 1938 | 580 | 169 84 118 |
| IA6-20 | Engine and Tool Room | Standard | 380 | 150 | — | — | 600 | — | Toyo Kogyo K.K. | Unknown | C.S.D. | 1938 | 580 | 163 79 119 |
| IA6-21 | Engine and Tool Room | Standard | 380 | 150 | — | — | 600 | — | Toyo Kogyo K.K. | Unknown | C.S.D. | 1938 | 580 | 170 72 110 |
| IA6-22 | Engine and Tool Room | Standard | 380 | 150 | — | — | 600 | — | Toyo Kogyo K.K. | Unknown | C.S.D. | 1939 | 580 | 170 85 110 |

LATHES

CLASSIFICATION AND SPECIFICATIONS

| 1 | 2 | 3 | 4 | 5 | 6 | 7 | 8 | 9 | 10 | 11 | 12 | 13 | 14 | 15 |
|--------------------|----------------------|----------|--------------------------|------------------------------|-----------------------------|--------------------|---------------------------------|--|--------------------------|--------------------------|---------------------------|---------------------|--------------|-------------------------------------|
| Inventory Code No. | Type | Sub-Type | Swing over ways in mm | Swing over carriage in mm | Round Bar Capacity in mm | Number of spindles | Length Between centers in mm | Type of Turret and Diameter of Hole in mm | Makers Name | Model No. and Serial No. | C.S.D or Motoric-Teves HP | Year of Manufacture | Weight in kg | Overall Dimension L x W x H - CM |
| IA6-23 | Engine and Tool Room | Standard | 330 | 100 | — | — | 560 | — | KARATSH TEKKO- SHO | Unknown | C.S.D | 1939 | 520 | 142 64 107 |
| IA6-24 | Engine and Tool Room | Standard | 380 | 150 | — | — | 600 | — | Toyo Kogyo K.K | Unknown | C.S.D | 1939 | 580 | 169 77 112 |
| IA6-25 | Engine and Tool Room | Standard | 380 | 150 | — | — | 600 | — | Toyo Kogyo K.K | Unknown | C.S.D | 1939 | 580 | 167 84 116 |
| IA6-26 | Engine and Tool Room | Standard | 380 | 150 | — | — | 600 | — | Toyo Kogyo K.K | Unknown | C.S.D | 1939 | 580 | 176 84 114 |
| IA6-27 | Engine and Tool Room | Standard | 380 | 150 | — | — | 600 | — | Toyo Kogyo K.K | Unknown | C.S.D | 1939 | 580 | 176 85 114 |
| IA6-28 | Engine and Tool Room | Standard | 400 | 210 | — | — | 800 | — | Toyo Kogyo K.K | Unknown | C.S.D | 1942 | 950 | 208 97 121 |

LATHES

CLASSIFICATION AND SPECIFICATIONS

| 1 | 2 | 3 | 4 | 5 | 6 | 7 | 8 | 9 | 10 | 11 | 12 | 13 | 14 | 15 |
|-------------------|----------------------|----------|-----------------------|---------------------------|--------------------------|--------------------|------------------------------|---|-----------------|--------------------------|---------------------------------------|---------------------|--------------|---------------------------|
| Inventory Code No | Type | Sub-Type | Swing over ways in mm | Swing over carriage in mm | Round Bar capacity in mm | Number of spindles | Length Between centers in mm | Type of Turret and Diameter of Hole in mm | Maker's Name | Model No. and Serial No. | C.S.D. or Motor - Volts - cycles - HP | Year of Manufacture | Weight in Kg | Overall Dimensions LWH cm |
| IA6-29 | Engine and Tool Room | Standard | 400 | 210 | — | — | 800 | — | TOYO Kogyo K.K. | Unknown | C.S.D. | 1942 | 950 | 226 88 124 |
| IA6-30 | Engine and Tool Room | Standard | 400 | 210 | — | — | 800 | — | TOYO Kogyo K.K. | Unknown | C.S.D. | 1942 | 950 | 223 78 114 |
| IA6-31 | Engine | Gap | 480 | 310 | — | — | 800 | — | TOYO Kogyo K.K. | Unknown | C.S.D. | 1939 | 950 | 222 106 117 |
| IA6-32 | Engine and Tool Room | Standard | 400 | 210 | — | — | 800 | — | TOYO Kogyo K.K. | Unknown | C.S.D. | 1942 | 950 | 210 73 117 |
| IA6-33 | Engine | Gap | 480 | 310 | — | — | 800 | — | TOYO Kogyo K.K. | Unknown | C.S.D. | 1939 | 950 | 224 112 116 |
| IA6-34 | Engine and Tool Room | Standard | 380 | 150 | — | — | 600 | — | TOYO Kogyo K.K. | Unknown | C.S.D. | 1939 | 580 | 180 81 119 |

LATHES

CLASSIFICATION AND SPECIFICATIONS

| 1 | 2 | 3 | 4 | 5 | 6 | 7 | 8 | 9 | 10 | 11 | 12 | 13 | 14 | 15 |
|--------------------|--------------------------|----------|-----------------------|---------------------------|--------------------------|--------------------|------------------------------|---|----------------------------|--------------------------|------------------------------------|---------------------|--------------|---------------------------|
| Inventory Code No. | Type | Sub-Type | Swing over ways in mm | Swing over carriage in mm | Round Bar capacity in mm | Number of spindles | Length Between centers in mm | Type of Turret and Diameter of Hole in mm | Maker's Name | Model No. and Serial No. | CSD or Motor - volts - cycles - HP | Year of manufacture | Weight in KG | Overall Dimensions LWH cm |
| IA6-35 | Turret Lathe Ram Type | Standard | 300 | 120 | 32 | 1 | — | Vertical AXIS (32) | HAYASHI SEISAKU-SHO | Unknown | C.S.D | 1939 est | 520 | 158 74 117 |
| IA6-36 | Turret Lathe Ram Type | Standard | 300 | 120 | 32 | 1 | — | Vertical AXIS (32) | HAYASHI SEISAKU-SHO | Unknown | C.S.D | est 1940 | 520 | 157 84 116 |
| IA6-37 | Engine | GAP | 460 | 260 | — | — | 1,300 | — | HIRANO SEISAKU-SHO | Unknown | I.M.D 220 60 3 | 1938 | 1,350 | 280 107 114 |
| IA6-38 | Engine | GAP | 470 | 270 | — | — | 2,500 | — | HIRANO SEISAKU-SHO | Unknown | I.M.D 220 60 3 | 1938 | 2,100 | 405 108 112 |
| IA6-39 | Engine and Tool Room | Standard | 220 | 150 | — | — | 650 | — | RIKEN MIYAUCHI SEISAKU-SHO | RDL No. 6193 | I.M.D 220 60 1 | 1944 | 750 | 156 58 116 |
| IA6-40 | Engine and Tool Room | Standard | 250 | 170 | — | — | 450 | — | NISHIKI SEISAKU-SHO | Unknown | I.M.D 220 60 1 | 1939 est | 450 | 144 74 121 |

LATHES

CLASSIFICATION AND SPECIFICATIONS

| 1 | 2 | 3 | 4 | 5 | 6 | 7 | 8 | 9 | 10 | 11 | 12 | 13 | 14 | 15 |
|--------------------|----------------------|----------|-----------------------|---------------------------|--------------------------|--------------------|------------------------------|---|----------------------------|--------------------------|---------------------------------------|---------------------|----------------|--------------------------|
| Inventory Code No. | TYPE | Sub-Type | SWING OVER ways in mm | SWING OVER carriage in mm | Round Bar Capacity in mm | Number of spindles | Length Between Centers in mm | Type of Turret and Diameter of Hole in mm | Maker's Name | Model No. and serial No. | C.S.D. or Motor - Volts - cycles - HP | Year of Manufacture | Weight in K.G. | Overall Dimensions in cm |
| IA6-41 | Engine and Tool Room | Standard | 250 | 170 | — | — | 450 | — | NISHIKI SEISAKU SHO | Unknown | I.M.D. 220 60 1 | 1939 est | 450 | 143 68 126 |
| IA6-42 | Engine and Tool Room | Standard | 250 | 170 | — | — | 450 | — | NISHIKI SEISAKU SHO | Unknown | I.M.D. 220 60 1 | 1939 est | 450 | 143 68 126 |
| IA6-43 | Engine and Tool Room | Standard | 250 | 170 | — | — | 450 | — | NISHIKI SEISAKU SHO | Unknown | I.M.D. 220 60 1 | 1939 est | 450 | 145 67 118 |
| IA6-44 | Engine and Tool Room | Standard | 220 | 150 | — | — | 530 | — | RIKEN MIYAUCHI SEISAKU-SHO | BL No. 484 | C.S.D. | 1944 | 385 | 121 46 67 |
| IA6-45 | Engine and Tool Room | Standard | 380 | 150 | — | — | 600 | — | TOYO KOGYO K.K. | Unknown | C.S.D. | 1939 | 580 | 183 81 114 |
| IA6-46 | Engine and Tool Room | Standard | 380 | 150 | — | — | 600 | — | TOYO KOGYO K.K. | Unknown | C.S.D. | 1940 | 580 | 170 85 122 |

775013

LATHES

CLASSIFICATION AND SPECIFICATIONS

| 1 | 2 | 3 | 4 | 5 | 6 | 7 | 8 | 9 | 10 | 11 | 12 | 13 | 14 | 15 |
|--------------------|------------|----------|-----------------------|---------------------------|--------------------------|--------------------|------------------------------|---|-----------------|--------------------------|------------------------------|---------------------|--------------|---------------------------|
| Inventory Code No. | TYPE | Sub-Type | Swing over ways in mm | Swing over carriage in mm | Round Bar Capacity in mm | Number of spindles | Length Between Centers in mm | Type of Turret and Diameter of Hole in mm | Maker's Name | Model No. and Serial No. | C.S.D. or Motor - Volts - HP | Year of Manufacture | Weight in kg | Overall Dimensions LWH cm |
| IA6-47 | Bench Type | | 200 | 90 | — | — | 50 | — | Toyo Kogyo K.K. | Unknown | C.S.D | 1940 | 85 | 60 55 90 |
| IA6-48 | Bench Type | | 200 | 90 | — | — | 50 | — | Toyo Kogyo K.K. | Unknown | C.S.D | 1940 | 85 | 60 55 90 |
| IA6-49 | Bench Type | | 200 | 90 | | | 50 | | Toyo Kogyo K.K. | Unknown | C.S.D | 1940 | 85 | 60 55 90 |
| IA6-50 | Bench Type | | 200 | 90 | | | 50 | | Toyo Kogyo K.K. | Unknown | C.S.D | 1940 | 85 | 60 55 90 |
| IA6-51 | Bench Type | | 200 | 90 | | | 50 | | Toyo Kogyo K.K. | Unknown | C.S.D | 1940 | 85 | 60 55 90 |
| IA6-52 | Bench Type | | 200 | 90 | | | 50 | | Toyo Kogyo K.K. | Unknown | C.S.D | 1940 | 85 | 60 55 90 |

LATHES

CLASSIFICATION AND SPECIFICATIONS

| 1 | 2 | 3 | 4 | 5 | 6 | 7 | 8 | 9 | 10 | 11 | 12 | 13 | 14 | 15 |
|--------------------|----------------------------|-----------------|--------------------------|------------------------------|-----------------------------|--------------------|---------------------------------|--|-----------------|-------------------------|--------------------------------------|---------------------|--------------|---------------------------------|
| Inventory Code No. | Type | Sub-Type | Swing over ways in mm | Swing over carriage in mm | Round Bar capacity in mm | Number of spindles | Length Between Centers in mm | Type of Turret and Diameter of Hole in mm | Makers Name | Model No and Serial No. | C.S.D or Motor - volts - cycles - HP | Year of Manufacture | Weight in KG | Overall Dimensions L x W x H |
| IA6-53 | Engine and Tool Room | Standard | 380 | 150 | | | 600 | | Toyo Kogyo K.K. | Unknown | C.S.D | 1940 | 580 | 190 90 115 |
| IA6-54 | Engine and Tool Room | Standard | 380 | 150 | | | 600 | | Toyo Kogyo K.K. | Unknown | C.S.D | 1940 | 580 | 177 72 115 |
| IA6-55 | N.E.C. | (Screw Machine) | 200 | 70 | 32 | 1 | — | — | Toyo Kogyo K.K. | Unknown | C.S.D | 1942 | 350 | 70 60 125 |
| IA6-56 | Automatic chucking Machine | Single Spindle | — | — | 20 | 1 | — | — | Toyo Kogyo K.K. | Unknown | I.M.B. Motor Missing | 1942 | 420 | 70 52 113 |
| IA6-57 | Engine and Tool Room | Standard | 380 | 150 | | | 600 | | Toyo Kogyo K.K. | Unknown | C.S.D | 1940 | 580 | 170 80 117 |
| IA6-58 | Engine and Tool Room | Standard | 380 | 150 | | | 600 | | Toyo Kogyo K.K. | Unknown | C.S.D | 1940 | 580 | 195 77 120 |

LATHES

CLASSIFICATION AND SPECIFICATIONS

| 1 | 2 | 3 | 4 | 5 | 6 | 7 | 8 | 9 | 10 | 11 | 12 | 13 | 14 | 15 |
|--------------------|----------------------|----------|--------------------------|------------------------------|-----------------------------|--------------------|---------------------------------|--|----------------|--------------------------|--------------------------------------|---------------------|---------------|------------------------------------|
| Inventory Code No. | Type | Sub-Type | Swing over ways in mm | Swing over carriage in mm | Round Bar Capacity in mm | Number of Spindles | Length Between Centers in mm | Type of Turret and Diameter of Hole in mm | Maker's Name | Model No. and Serial No. | C.S.D or Motor - volts - cycles - HP | Year of Manufacture | Weight in K.G | Overall Dimensions L x H x C in |
| IA6-59 | Engine and Tool Room | Standard | 380 | 150 | — | — | 600 | — | Toyo Kogyo K.K | Unknown | C.S.D | 1940 | 580 | 170 72 120 |
| IA6-60 | Engine and Tool Room | Standard | 380 | 150 | — | — | 600 | — | Toyo Kogyo K.K | Unknown | C.S.D | 1940 | 580 | 160 82 115 |
| IA6-61 | Engine and Tool Room | Standard | 380 | 150 | — | — | 600 | — | Toyo Kogyo K.K | Unknown | C.S.D | 1940 | 580 | 175 80 115 |
| IA6-62 | Engine and Tool Room | Standard | 380 | 150 | — | — | 600 | — | Toyo Kogyo K.K | Unknown | C.S.D | 1940 | 580 | 170 82 113 |
| IA6-63 | Engine and Tool Room | Standard | 380 | 150 | — | — | 600 | — | Toyo Kogyo K.K | Unknown | C.S.D | 1940 | 580 | 170 75 115 |
| IA6-64 | Engine and Tool Room | Standard | 380 | 150 | — | — | 600 | — | Toyo Kogyo K.K | Unknown | C.S.D | 1940 | 580 | 172 82 118 |

MILLING MACHINES

| CLASSIFICATION AND SPECIFICATIONS | | | | | | | | | | | | | | |
|-----------------------------------|----------------------|-----------|--------------------------|--|--------------------|----------------------|-------------------------|--------------------------------------|-----------------------|--------------------|---------------------------------------|---------------------|--------------|-----------------------------------|
| 1 | 2 | 3 | 4 | 5 | 6 | 7 | 8 | 9 | 10 | 11 | 12 | 13 | 14 | 15 |
| Inventory Code No. | TYPE | Sub-Type | Overall Table Size in mm | Table Travel Longitudinal Vertical in mm | Number of spindles | Spindle Taper Number | Diameter of Arbor in mm | Center of spindle to Top Table in mm | Maker's Name | Model No. & Serial | C.S.D. or Motor - volts - cycles - HP | Year of Manufacture | Weight in KG | Overall Dimensions L-cm W-cm H-cm |
| IA7-1 | Knee Type Horizontal | Universal | 1050 235 | 600 250 440 | 1 | Mouise No. 2 | 22 | 495 | TOYO KIKAI Kogyo K.K. | Unknown | C.S.D. | 1939 est | 1100 | 145 145 165 |
| IA7-2 | Knee Type Vertical | N.E.C. | 710 190 | 340 230 400 | 1 | Collet Chuck 30mm | None | 460 | MAEGAWA TEKKO-SHO | Unknown | C.S.D. | 1938 est | 450 | 110 135 165 |
| IA7-3 | Knee Type Horizontal | Plain | 710 190 | 340 230 400 | 1 | Mouise No. 2 | 22 | 455 | MAEGAWA TEKKO-SHO | Unknown | C.S.D. | 1938 est | 450 | 110 135 150 |
| IA7-4 | Bench | — | 550 110 | 300 70 150 | 1 | Collet Chuck 30mm | 18 | 180 | TAMAYAMA SEISAKU-SHO | Unknown | C.S.D. | 1940 est | 210 | 95 75 110 |
| IA7-5 | Bench | Vertical | 530 140 | 200 — 110 | 1 | Collet Chuck 30mm | None | 155 | TOYO Kogyo K.K. | Unknown | C.S.D. | 1941 | 210 | 65 65 132 |
| IA7-6 | Bench | — | 530 140 | 200 — 110 | 1 | Collet Chuck 30mm | 18 | 155 | TOYO Kogyo K.K. | Unknown | C.S.D. | 1941 | 190 | 60 68 110 |

775013

MILLING MACHINES

CLASSIFICATION AND SPECIFICATIONS

| 1 | 2 | 3 | 4 | 5 | 6 | 7 | 8 | 9 | 10 | 11 | 12 | 13 | 14 | 15 |
|--------------------|---------------------------|------------------|-----------------------------|--|--------------------|-----------------------------|----------------------------|--------------------------------------|-------------------------|-------------------|--|---------------------|--------------|--|
| Inventory Code No. | TYPE | Sub-Type | Overall Table Size in mm | Table Travel Longitudinal Cross and Vertical in mm | Number of Spindles | Spindle Taper Number | Diameter of Arbor in mm | Center Spindle to Top Table in mm | MAKER'S NAME | Model No & Serial | C.S.D. or motor - volts - cycles - HP | year of Manufacture | Weight in KG | Overall Dimensions L - cm W - cm H - cm |
| IA7-7 | Bench | — | 530 140 | 200 — 110 | 1 | Collet chuck 30mm | 18 | 155 | TOYO KOGYO K.K. | Unknown | C.S.D. | 1941 | 190 | 55 70 115 |
| IA7-8 | Bench | — | 530 140 | 200 — 110 | 1 | Collet chuck 30mm | 18 | 155 | TOYO KOGYO K.K. | Unknown | C.S.D. | 1941 | 190 | 60 74 105 |
| IA7-9 | Bench | — | 530 140 | 200 — 110 | 1 | Collet chuck 30mm | 18 | 155 | TOYO KOGYO K.K. | Unknown | C.S.D. | 1941 | 190 | 60 74 110 |
| IA7-10 | Bed Type | Vertical Spindle | 960 470 | 400 385 785 | 2 | None | (Screw) 19 | 140 | Unknown | Unknown | C.S.D. counter shaft missing | Unknown | 1,200 | 115 230 175 |
| IA7-11 | Bed Type | Vertical Spindle | 960 470 | 400 85 | 2 | None | (Screw) 19 | 140 | Unknown | Unknown | C.S.D. counter shaft missing | Unknown | 1,200 | 115 230 175 |
| IA7-12 | KoType Motori Zont-tal | plain | 1,340 270 | 710 300 460 | 1 | National standard No. 50 | | 254 | YAMASHI TA TEKKO-SHO | Unknown | I.M.D. 200 60 5 | 1944 est | 2,100 | 160 170 150 |

PLANERS

CLASSIFICATION AND SPECIFICATIONS

| 1 | 2 | 3 | 4 | 5 | 6 | 7 | 8 | 9 | 10 | 11 | 12 | 13 | 14 |
|--------------------|----------------|----------|-----------------|---------------------------|--|----------------|----------------------|------------------------------|------------------------|--|---------------------|--------------|--------------------|
| Inventory Code No. | Type | Sub-Type | Number of Heads | Distance Between Hoosings | Maximum Distance Between Platen (Table) Cross-Roll | Maximum Stroke | Platen or Table Size | Maker's Name | Model No or Serial No. | C.S.D or Motor - Volts - cycles - H.P. | Year of Manufacture | Weight in Kg | Overall Dimensions |
| IAB-1 | Double Hoosing | | 1 | 920 | 670 | 2,200 | 2170 710 | MATSUMOTO CHUZO TEKKO-SHO | Unknown | I.M.D 220 60 5 | 1940 - est | 3,500 | 340 220 275 |
| IAB-2 | Double Hoosing | | 1 | 1,200 | 760 | 3,100 | 3,250 800 | DAIDO SEISAKU-SHO | Unknown | C.S.D | Unknown | 4,200 | 405 250 245 |

SHAPEPERS AND SLOTTERS

CLASSIFICATION AND SPECIFICATIONS

| 1 | 2 | 3 | 4 | 5 | 6 | 7 | 8 | 9 | 10 | 11 | 12 | 13 | 14 |
|--------------------|------------|----------|-----------------------|-----------------------------------|---|-----------------------|-------------------------------|----------------------|---------------------------------|---------------------|-----------|-----------------------------------|----|
| Inventory code No. | Type | Sub-Type | Maximum stroke of Ram | Maximum Travel of Tool-Head Slide | Maximum Work Table Travel Horizontal and Vertical | Work Table Dimensions | Maker's Name | Model No. Serial No. | CSD or Motor -volts -cycles -HP | Year of Manufacture | Weight Kg | Overall Dimensions L-CM W-CM H-CM | |
| IA9-3 | Horizontal | | 610 | 150 | 920 460 | 430 360 | KAWAKAMI KIKAI SEISAKU-SHO | Unknown | I.M.D. 220 60 5 | 1940 est | 1,000 | 210 145 165 | |
| IA9-4 | Horizontal | | 320 | 60 | 450 360 | 310 225 | KOMURA SEISAKU-SHO | Unknown | C.S.D. | 1939 est | 950 | 130 100 145 | |
| IA9-5 | Horizontal | | 580 | 130 | 660 370 | 450 490 | MITAKA SEISAKU-SHO | Unknown | C.S.D. | 1938 est | 1,600 | 195 145 160 | |
| IA9-6 | Horizontal | | 550 | 110 | 700 370 | 440 435 | ASATANI TEKKO-SHO | Unknown | C.S.D. | 1938 est | 1,500 | 200 145 150 | |
| IA9-7 | Vertical | | 120 | None | L 130 C 150 V 240 | Diameter 350 | TOYO Kogyo K.K. | Unknown | C.S.D. | 1939 | 550 | 150 85 160 | |

MISCELLANEOUS MACHINE TOOLS AND EQUIPMENT

CLASSIFICATION AND SPECIFICATIONS

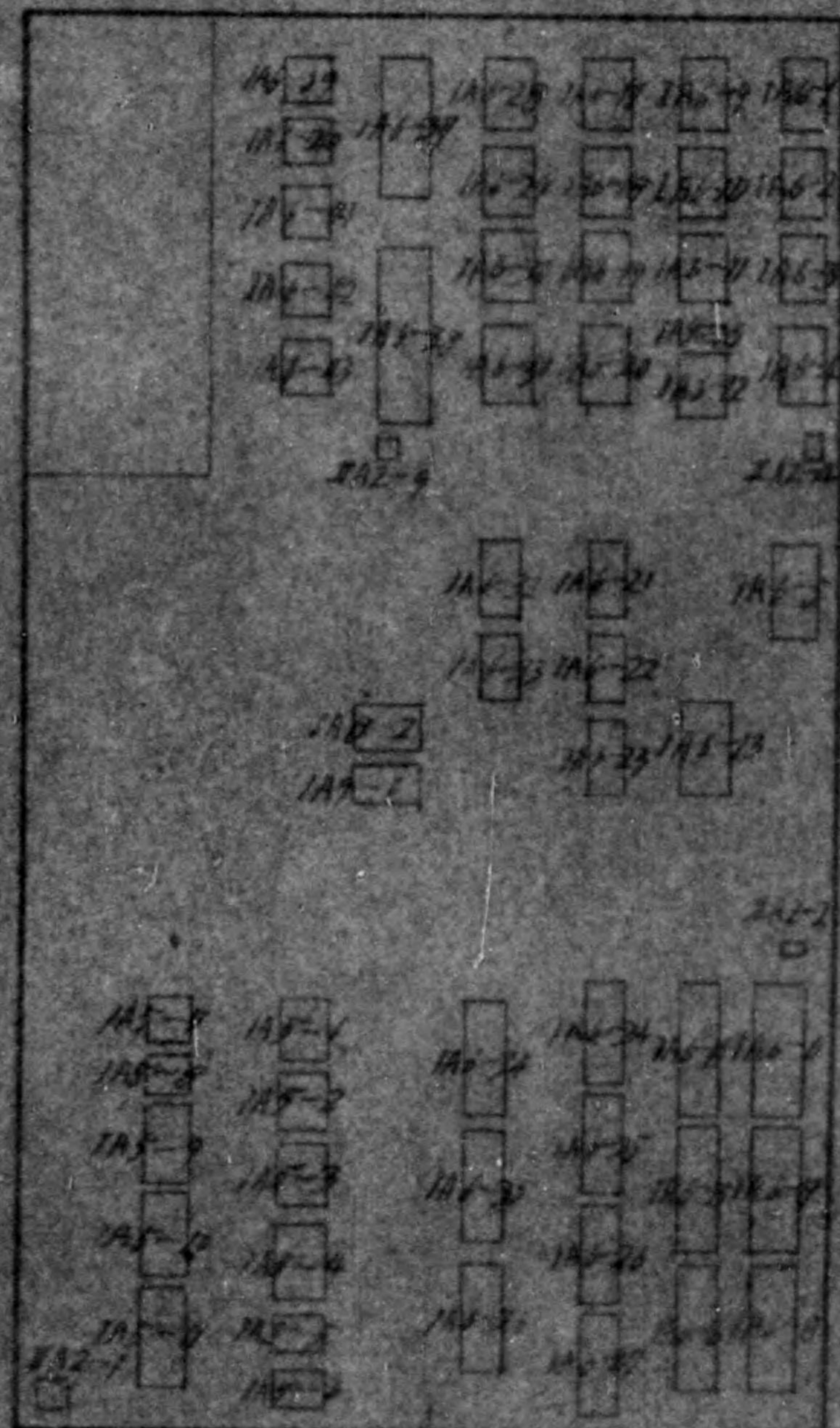
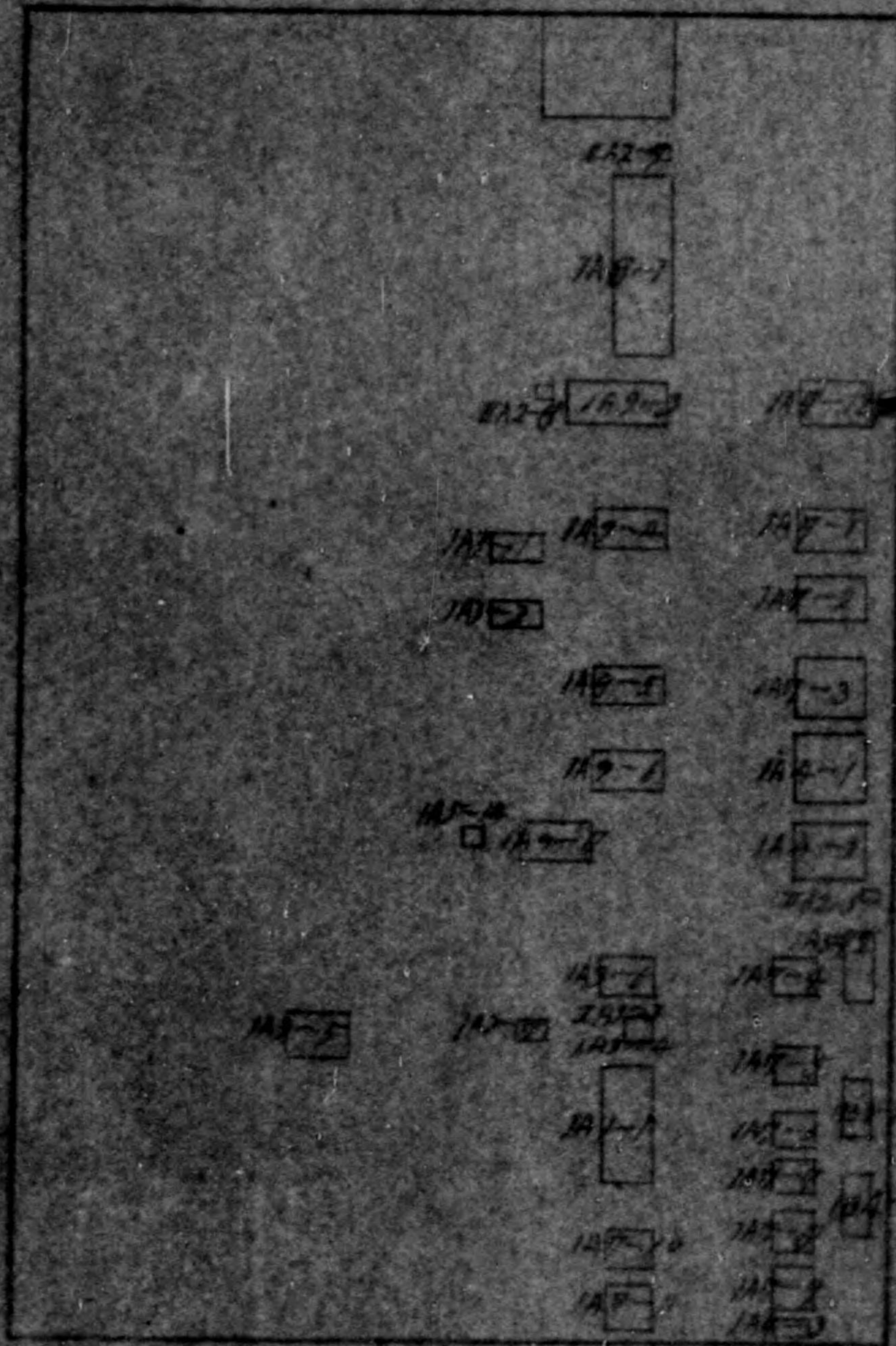
| 1 | 2 | 3 | 4 | 5 | 6 | 7 | 8 | 9 | 10 | 11 | 12 | 13 | 14 |
|--------------------|------------------------------|-----------|---|--------------|-------------------|-----------------------------------|--------|-------------------------|--------------------------|-------------|--------------|--|---|
| Inventory Code No. | TYPE | Sub-Type | Length of Maximum Blade or Diameter of Saw or other | Size of Work | Diameter of Spade | Maximum Diameter of Lips or Holes | Stroke | Maker's Name | Model No. and Serial No. | Year of Mfg | Weight in Kg | Overall Dimensions L - cm W - cm H - cm | CSD or Motor - Volts - Cycles - HP |
| IAG-1 | Cut off and stamping machine | Hand Type | 400 | 300 | — | — | 190 | KAWAI TEKKO-SHO | Unknown | 1940 est | 375 | 150 55 95 | I.M.D 220 60 1/2 |
| IAG-2 | Cut off and stamping machine | Hand Type | 400 | 300 | — | — | 190 | HINOMOTO SEISAKI-SHO | Unknown | 1939 est | 400 | 160 70 105 | I.M.D 220 60 1/2 |

SECONDARY METAL FORMING AND CUTTING MACHINES AND EQUIPMENT

CLASSIFICATION AND SPECIFICATION

| 1 | 2 | 3 | 4 | 5 | 6 | 7 | 8 | 9 | 10 | 11 | 12 | 13 |
|-------------------------|---------------------|----------|----------------------|-------------------------------------|-----------------|-----------------|----------------|--|-----------------------------|---------------------|---|--|
| Inventory code NO | Type | Sub-Type | Number of Rams | Size of Table or Bed in mm | Stroke in mm | Capacity Ton | Makers Name | Model Number and Serial No | Year of Manufac- ture | Weight in K.G | Overall Dimensions L - cm W - cm H - cm | C.S.D. Motor - VOLTS - cycles - HP |
| IB3-1 | Manual Press | _____ | _____ | 650 | _____ | _____ | _____ | _____ | _____ | _____ | 100 100 160 | Hand |
| IB3-1 | Mechanical press | _____ | _____ | 300 | _____ | _____ | _____ | _____ | _____ | _____ | 125 80 90 | C.S.D |
| | | | | 250 | 190 | 0.3 ton | Unknown | Unknown | Unknown | 810 | | |

ToYo KogYo K.K machine sketch



1A2-1

