

18.12.03
28.12.03

Mr. "Burger"
1870

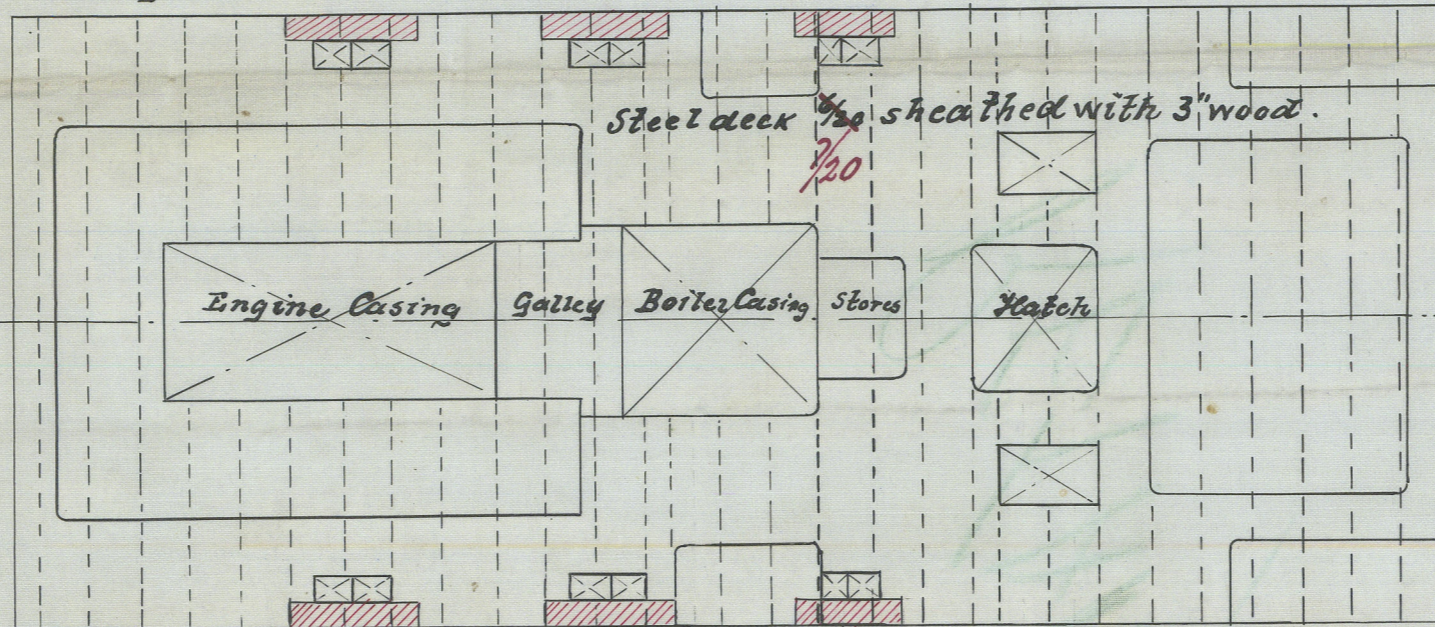
S.S. 198.
Arrangement of Steel Decks.

Scale $\frac{1}{16} = 1 \text{ Foot}$

Bridge Deck.

Stringer $40 \times \frac{10}{20}$

Doublings $25 \times \frac{9}{20}$

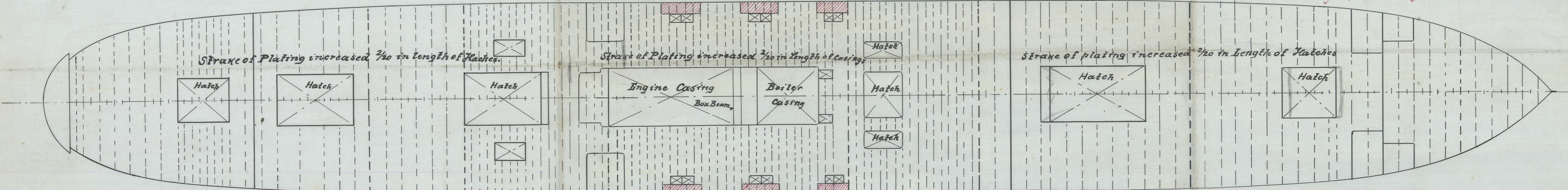


All corners of Hatches & Casings to be strengthened by angles $5 \times 5 \times \frac{10}{20}$. Double riveted to Deck plating & coamings. with doubling plates at corners as per rule

Doublings $28 \times \frac{10}{20}$

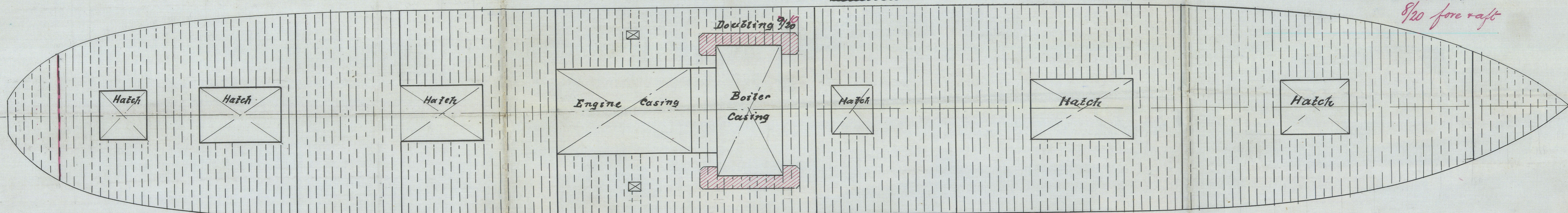
Spardeck.

Spardeck Stringer $61 \times \frac{9}{20}$ to $46 \times \frac{9}{20}$ at ends + $\frac{5}{20}$ for $\frac{3}{5}$ length = $\frac{14}{20}$
Deck plating $\frac{9}{20}$ ($\frac{7}{20}$) Stringer $\frac{1}{20}$ in bridge



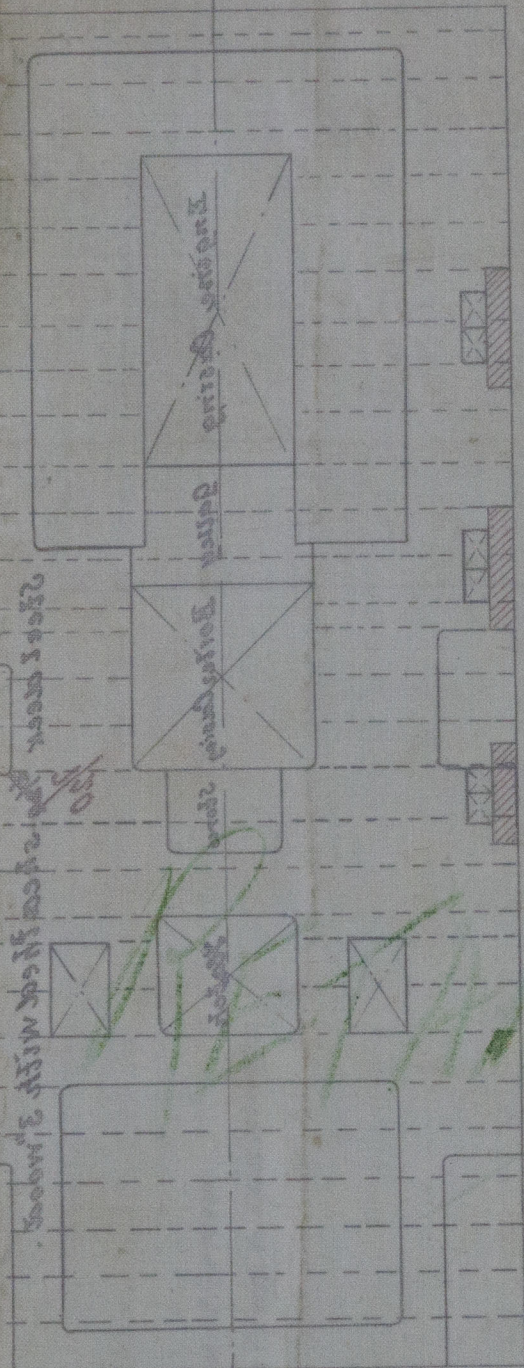
Main Deck.

Maindeck Stringer $61 \times \frac{10}{20}$ ($46 \times \frac{9}{20}$) Plating $\frac{9}{20}$ ($\frac{8}{20}$) $\frac{8}{20}$ fore + aft



21698
JOH. C. TECKLENBORG A.-G.
SCHIFFSWERFT und MASCHINENFABRIK.
BREMERHAVEN-GEESTEMÜNDE.
12. December 1903.

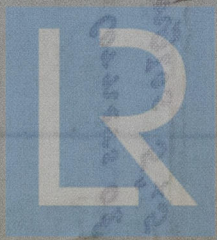
18.12.03. © 2019



200x200x10

200x200x10

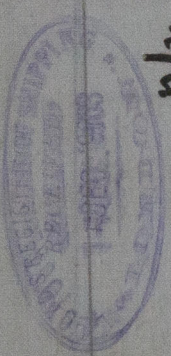
ARRG^T OF STEEL DECKS



© 2019

Lloyd's Register Foundation

Kyffels
Rhm 1410.
n/n "Bruges"



2.2.2.2

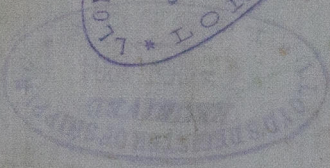
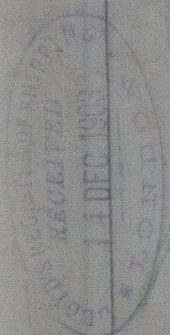
General survey of 12 feet Deck

scale 1/8" = 1 foot

Deck

Deck 22 x 8 1/2

Spindles 40 x 5/8



60-21-87
28-12-03



W366-2011S

Lloyd's Register
Foundation