

F

44

M2 St

Souvenir
of

Manchester
N.H.



The Historical
Society

CITY HALL.





Class F44

Book M2S7

Copyright N^o _____

COPYRIGHT DEPOSIT.

✓
Souvenir of...

MANCHESTER, N. H.


PHOTO-GRAVURES


THE ALBERTYPE CO.,
BROOKLYN, N. Y.

COPYRIGHT, 1900, BY
TEMPLE & FARRINGTON, Co.,
BOOKSELLERS,
MANCHESTER, N. H.

24218

Library of Congress
Two COPIES RECEIVED
JUL 24 1900
Copyright only
July 24 1900
No. *A. 18264*
SECOND COPY
Forwarded to
ORDER DIVISION
AUG 1 1900

66882

F44
.M2 S7





ELM ST. NORTH FROM HANOVER ST.



SOLDIERS' MONUMENT—MONUMENT SQUARE.



UNION STATION.



POST OFFICE.



KENNARD BUILDING.



HANOVER ST. EAST FROM ELM ST.



HIGH SCHOOL.

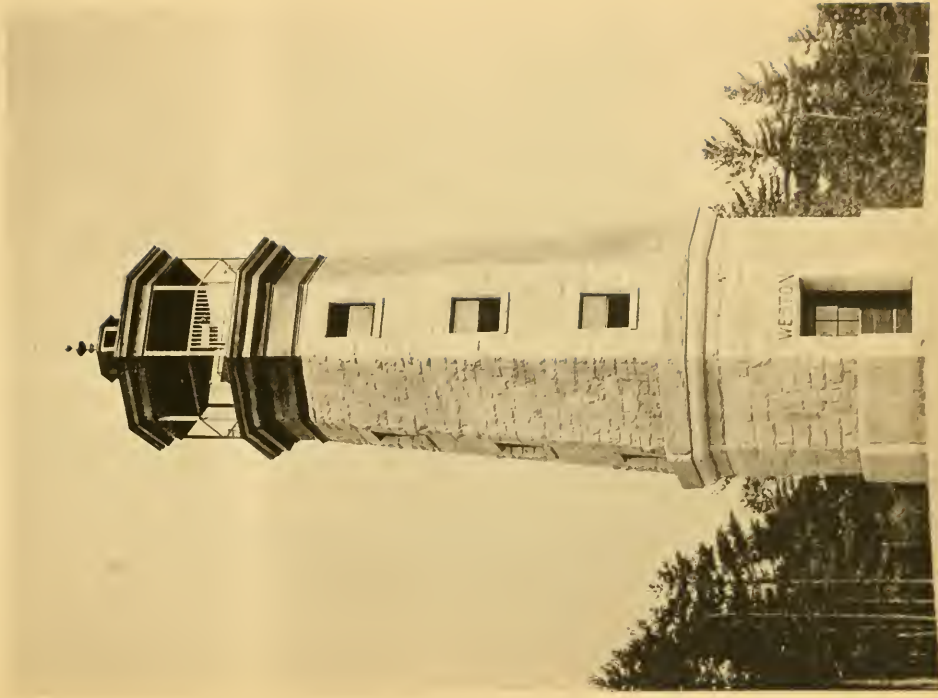


FRANKLIN STREET CHURCH.

PUBLIC LIBRARY



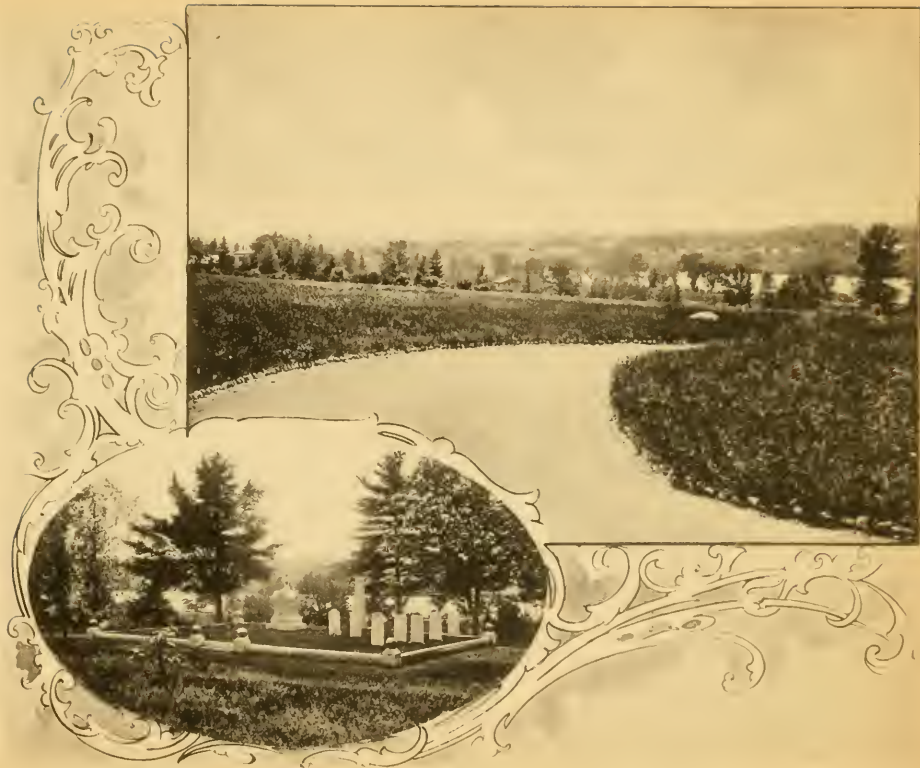
MANCHESTER CHURCHES.



WESTON LIGHTHOUSE



NORTH ELM ST.



STARK MONUMENT.

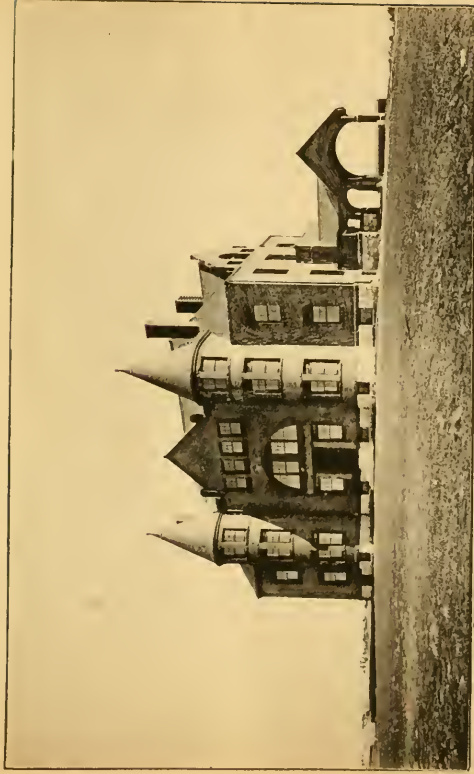
VIEW FROM STARK PARK.



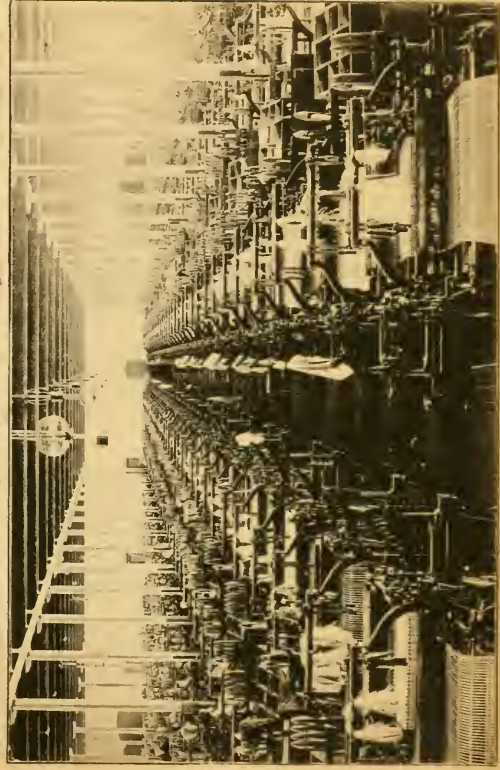
ANGEL FALL.



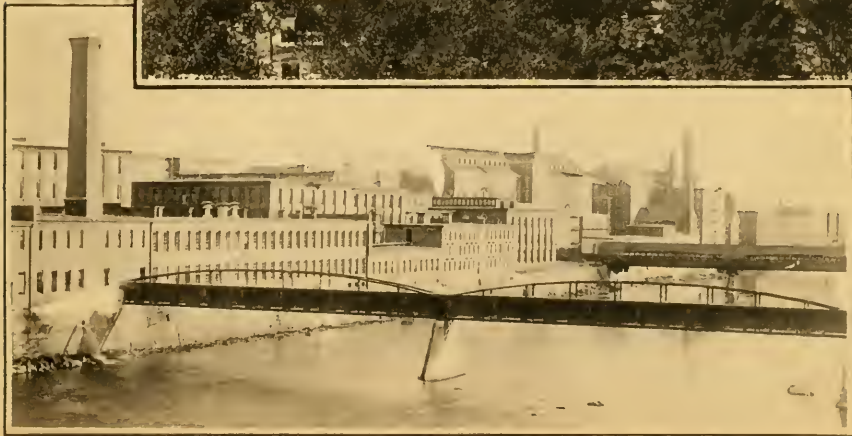
GRANITE BRIDGE.



ELLIOT HOSPITAL.



WEAVE ROOM AMOSKEAG MILL.



AMOSKEAG COTTON MILLS.





0 013 984 757 A



Temple & Farrington

