

# GLENDALE NEWS

THE GLENDALE NEWS  
Daily Except Sunday  
DEVOTED TO THE INTERESTS OF GLENDALE

VOL. XV GLENDALE, (LOS ANGELES POSTOFFICE), LOS ANGELES COUNTY, CAL., FRIDAY, MAY 14, 1920 216

## TRUSTEES' MEETING

### BOARD URGED TO ERECT BRANCH MUNICIPAL BUILDING ON BRAND BOULEVARD

The Board assembled at 8 o'clock p. m., May 13, 1920. All members present. Minutes of the regular meeting of May the 6th, 1920, were read and approved.

Mr. Fram appeared before the Board desiring to be informed as to the rules of the Public Service Department in regard to the size of meters. The matter was referred to the City Manager.

At this time, in accordance with the advertisement calling for bids, bids of Peter L. Ferry and Burke & Graul were opened, read, and publicly declared, for doing the work of improvement on Sycamore Canyon Road.

The bids were referred to the City Engineer to check up and report. Later, the Engineer reported in regard to the bids for improvement of Sycamore Canyon Road as follows: The bid of Peter L. Ferry represents an aggregate cost for the improvement of \$223,907.06; that of Burke & Graul \$199,529.00. Action was deferred.

A communication was read from the Greater Glendale Development Association in regard to the project of erecting a municipal building at some central point on Brand boulevard to house a branch office of the city where people might pay their taxes, light and water bills, etc.; also to house an information bureau and offices for various associations connected with the city.

### GLENDALE ON TIPTOES FOR COMING BASEBALL CONTEST

While the Glendale High School baseball team has won the first game in the Inter-Scholastic League championship contest, the boys realize that they are not out of the woods yet. They have two and, it is hoped, three more games to play, and each is with the champion team of another district. This is an elimination contest. Every team that loses is dropped. Thus Santa Monica is out of the contest for good since its defeat by Glendale on Wednesday. It is not known what team Glendale will play with next but if she wins another and the last game will be played with some other team, victory over which will win the championship. If she loses the next game, then her chances end for no other game can be played. So the boys and their many admirers are hoping for victory next time and then in the next and final game.

### BANK EMPLOYEES ENTERTAINED

Employees of the First National Bank of Glendale were delightfully entertained Thursday by Miss Alpha Thedaker with an evening of music and games at her home in Burbank. The guest list included Misses Ethel Preston, Elsie Wilson, Dorothy Wilde, Mr. and Mrs. Wilbur Franey, Harry Franey, Miss Gladys Denslow, Miss Blanche Shelton of Burbank, Messrs. Will Wilson, Will Marple, William Greer and Verne Nyman. At the close of the evening refreshments were served.

## LONG FOR GLENDALE

### W. J. STONE AND WIFE, NOW OF PASO ROBLES, ARE GETTING MIGHTY HOMESICK

W. J. Stone, who sold his fine home at 641 North Brand in the spring of last year and moved to Paso Robles, where he and two relatives from Illinois bought a large tract of land to set to fruit and almond trees, is prospering there, he said, on a recent visit to friends here, but the hearts of himself and wife turn yearningly back to Glendale, where they spent several happy years and made many desirable acquaintances; and it would not surprise the latter if they returned to make their home here in a year or two. Mr. Stone says that Paso Robles, which has but recently emerged from the condition of a cowboy town, is planning along progressive lines. Representative citizens have organized an association to provide a community center where wholesome games may be enjoyed by young and old, high-class moving pictures replace the present sordid films being shown and popular lectures be given. Mr. Stone says he is in hearty accord with this movement and is giving it his earnest support. The four churches of the city are co-operating, also, and the various civic organizations, so success seems assured.

## NEW ZEALAND

### WONDERS OF ISLAND DEMOCRACY SET FORTH BY CHARLES H. POOLE

A charming program put on by the Royal Welsh Lady Singers entertained a big audience of six hundred or more persons yesterday afternoon on the Chautauqua platform in the big tent as a preliminary to the address of Hon. Charles H. Poole of Auckland, New Zealand. Opening with a spirited rendition of Men of Harloch—the first verse sung in Welsh gaelic—the battle hymn of the country, several chorus numbers were given unfamiliar to American audiences including "Tramp, Tramp, Tramp," "Come Where the Lilies Bloom" and "In Robin Time." There were also solo, duet and trio numbers interpreting "The Pipes of Pan Are Calling," "O Dry Those Tears," a beautiful lullaby, and a most captivating rendition of "My Laddie," with the true Scotch roll of the "r" in a perfect cataract of trills that immensely pleased, the audience enjoying the very lovely voice of the junior soprano. There were also some entertaining recitations.

The speaker of the afternoon, Mr. (Continued on Page 2)

### NOTED MUSICIAN FROM EAST LOCATES OUT HERE

Miss Marian Ralston visited at the I. H. Pearson home, 644 East Harvard, this week. She is noted both as a pianist and a composer, and was for some years director of music at Rockford College, Rockford, Ill. Last year she was instructor at Wellesley. Smitten with the charms of California she has decided to make her home in Los Angeles and is now preparing for a series of concerts to be given this fall. Glendale will be included in the series. The Pearsons say they have found it a rare pleasure to listen to her wonderful playing.

### SEEKING OLD FRIEND, LEARNS OF HIS DEATH

J. W. Brill of Hollywood was in Glendale yesterday looking for an old friend and valued associate in Southern Mexico, W. C. Bradley, and was surprised and shocked to learn of his recent death. When he was associated with Mr. Bradley in Oaxaca, the latter was superintendent of the southern department of the Mexican National Railway and Mr. Brill was in the mining business. He spoke of Mr. Bradley's cool courage and resourcefulness in the trying days when revolutionists were making frequent raids on railroad and other property. Mr. Brill's errand yesterday was not only to see his old friend, but to get some information regarding conditions in Mexico for the U. S. government from Mr. Bradley, than whom there was no better authority in all California.

### BIRTHDAY DINNER

Mrs. F. Monaghan, of 520 North Louise street, was hostess Thursday evening at a smart little dinner given in honor of her husband's birthday. The table was centered with pink carnations and its attractive appointments were in harmony with the color scheme. Covers were laid for Miss Anna Keller, Mr. Linberg, Mrs. Rosendale of Los Angeles, and the host and hostess. Following the dinner a pleasant musical evening was enjoyed by the party. Mr. Monaghan is leaving today for a two weeks' stay at Gilman Relief Springs at San Jacinto.

### W. W. ESTERLY

Encouraging letters have come to the relatives of Corporal W. W. Esterly now in the army hospital at San Francisco. It will be remembered that this fine young man made tremendous sacrifices for his country as his health has been wrecked by the wounds he suffered in battle overseas, wounds which left shrapnel in his lungs by which he is still tortured. He writes that the wounds appear to be healing and that he is gaining in weight. There is some prospect that he may be transferred to the hospital at Arrowhead Springs, which would please him greatly because it is in his beloved Southern California and nearer his home, his wife and parents.

### MONROVIA'S POPULATION

Census reports credit Monrovia with an increase in population of 1904 since 1910, or a gain of 53.2 per cent, the present population being 5480.

## EXCITEMENT AT CALEXICO

### RUMORS OF IMPENDING ATTACK ON MEXICALI LEAD TO CLOSING OF LINE; NEW WIRELESS STATION

(Special Service to Glendale Evening News)  
NOGALES, May 14.—A new wireless station completed at Hermosillo is in direct communication with Mexico City. It is to be used at this time only for official business.

CALEXICO, May 14.—The border here is quiet today following considerable excitement last night when the line was closed by United States forces following reports that an attack on Mexicali was imminent. The reports were unfounded. They followed the attempts of two men to cross the line without passports. One succeeded and was returned to this side by Cantu soldiers and was promptly arrested for line-running by U. S. immigration men. Cantu officials do not anticipate trouble, they declared today. A decision as to whether the line will be closed tonight has not yet been made, it was said at the Customs Office. Tia Juana, on the border, was reported quiet today.

## SOLDIERS' BONUS

### REPUBLICANS AGREE TO CASH BONUS OF \$500 OR MAXIMUM OF \$625 IN OTHER FORMS OF AID

(Special Service to Glendale Evening News)  
WASHINGTON, May 14.—A maximum cash bonus of \$500 for the service men was agreed to today by republicans of the House Ways and Means Committee. The maximum benefit to be allowed under the official forms of aid (which are farm or home aid, vocational training, or paid up insurance) was fixed at \$625. Chairman Fordney plans to submit the revised bill to the committee Wednesday.

## GERMANS AT SPA CONFERENCE

### DECIDE NOT TO PARTICIPATE UNLESS FRENCH TROOPS ARE WITHDRAWN FROM FRANKFORT

(Special Service to Glendale Evening News)  
BERLIN, May 14.—The German cabinet today decided not to participate in the Spa conference with the allies unless French troops are withdrawn from Frankfort before the conference is called.

## IRISH DISORDERS CONTINUE

### MORE ATTACKS ON POLICE BARRACKS AND PUBLIC BUILDINGS IN COUNTY LIMERICK

(Special Service to Glendale Evening News)  
DUBLIN, May 14.—Attacks on police barracks and public buildings continued last night, according to advices received here today. At Brure, forty miles north of Cork, in County Limerick, armed men destroyed the court house and burned the post office. Roads were barricaded and communication lines cut by the raiders. It was announced officially that more than fifty police barracks were destroyed in Wednesday night's raid.

## ELECTION OF NEW BISHOPS TODAY

### GENERAL METHODIST CONFERENCE AT DES MOINES ACTS ON REPORT OF EPISCOPAL COMMITTEE

(Special Service to Glendale Evening News)  
DES MOINES, May 14.—The Methodist General Conference today passed without change the report of the Episcopal Committee which recommended the election of fourteen new bishops and the creation of seven new church areas. The election of the bishops will be held today.

### CRISIS APPROACHING IN MEXICO

(Special Service to Glendale Evening News)  
VERA CRUZ, May 14.—Carranza forces have suffered several hundred casualties in heavy fighting in the region of Hacienda Tamriz, State of Puebla, in the last 48 hours, according to reports received here. Revolutionary leaders claimed their troops were gradually closing in on the deposed president. They expected his surrender or capture within the next two days.

British representatives were worried today over the fate of John F. Body, British Consul at Vera Cruz. He was reported to have left Mexico City on the train on which the president fled. No word has been received from him.

Another report said that Filipe Sanchez Carranza, nephew of the deposed president, shot and killed himself yesterday rather than surrender to the rebels after he had been surrounded.

### DANIELS SECURES PRESIDENT'S APPROVAL

(Special Service to Glendale Evening News)  
WASHINGTON, May 14.—President Wilson was consulted by Secretary Daniels before the latter made public the president's secret cablegrams and confidential speeches delivered during the war in which he sharply criticized the British navy, it was announced today at the White House.

## NEW POWER LINE

### EDISON COMPANY REPRESENTATIVES ENCOURAGE GLENDALE CITY OFFICIALS

R. C. Cunningham, Superintendent of Distribution, and Mr. Childs, commercial sales agent of the Southern California Edison Company, visited Glendale Thursday and conferred with the city in regard to the building of a special high power line. After looking the ground over and returning to their headquarters, they advised officials here that they would recommend the Edison Company to include in its next budget an appropriation for the building of an additional line independent of the Eagle Rock sub-station to some point on the city limits of Glendale, this city to continue the line from that point to the Glendale sub-station. The city plans to include in its next budget, if possible, an appropriation for the building of its own portion of the proposed power line which, it is estimated, will cost \$9000 to \$10,000, one-third to one-half of which will be borne by Glendale.

The city now has two sources of supply, one from the Eagle Rock sub-station which passes around the south end of Glendale and is transmitted by the Central Avenue line, the second source being from the sub-station at San Fernando; but as it is a long line and subject to interruption it is more apt to be out of service than the shorter line. The proposed new line will be more direct and a practically independent line, serving Glendale only.

The budget of the Southern California Edison Company is made up in December. The prospect, therefore, is that the new line will become a reality within the coming twelve months.

### RECENT BALL GAMES

Yesterday afternoon the Intermediate baseball team won its third victory over the High School scrub team by a score of 6 to 4. The game was played at Intermediate. The makeup of the two teams was as follows: Intermediate—Theo. Haig, c; Harold Thompson, p; Ronald West, 1b; Tom Wood, 2b; Wm. Morgan, 3b; Gordon Kingsley, ss; Edward Rike, lf; John Lovell, mf; Robt. Frazee, rf. High School—Ben Marsh, c; Vernon Paul, p; Tom Morgan, 1b; Robt. Harper, 2b; Robert McCord, 3b; G. Clark, lf; Wilbur Johns, mf; Wilbur Cline, rf. Four noon games have been played so far in the Interscholastic League by the boys' teams and the same number by the girls' teams. The results of the boys' games were as follows: Red Sox 4, Bees 1; Tigers, 4, White Sox 6; Red Sox 4, Tigers 7; Bees 4, White Sox 9. And of the girls' games: Highfliers 0, Terrors 8; Tiger Lillies 14, Bees 25; Tiger Lillies 9, Terrors 4; Bees 13, Terrors 13.

## BROADWAY P. T. A.

### OFFICERS ELECTED AND DELEGATES APPOINTED FOR COMING STATE MEETING

The chief business of the Broadway Parent-Teacher Association which met Thursday afternoon at the school, was the election of officers for the coming year, as follows:

- President, Mrs. R. Horner.
  - Vice-President, Mrs. B. Kuehny.
  - Secretary, Mrs. Phillips.
  - Treasurer, Mrs. Will Jepson.
  - Historian, Mrs. F. Wilkinson.
- Delegates to the State Convention of the Mothers' Congress and Federation of Parent-Teacher Associations elected were: Mesdames Horner, Aichelz, Van Wie, Wilkinson, Jepson and Godfrey. A list of alternates were also named.

The premium cake was won by the sixth grade which had to its credit the largest number of mothers present.

The next meeting of the association will take the form of a garden party at the home of Mrs. Kuehny. At that time a food sale will be held for the benefit of the school furnishing fund.

Mrs. Sarah Hopkins of Santa Ana is visiting in the home of her brother, Charles Casselman, of 451 West Elk. Mrs. Hopkins came to California a short time ago from Michigan and is spending most of her time looking for a house in hopes that she may be able to locate in Glendale.

WEATHER FORECAST: Mostly cloudy tonight and Saturday.

## PUBLIC NEED

### REV. CRIST SAYS CHURCH SCHOOL AND HOSPITAL STAND ON COMMON GROUND

Editor Glendale Evening News:  
As a public-spirited citizen, and a booster for the finest suburban city in Southern California, I wish to express my unqualified views in reference to the proposed hospital. First, let me say, I believe that absolute need of this type of institution is evident to even the casual observer. There are three institutions, other than the home itself, that stand out in the front row of our modern civilization; the church, the school, and the hospital. My conviction is that one of the outstanding moves of this non-sectarian, fully equipped hospital to meet the needs of our ever-increasing population. In my judgment, it is the duty of all the physicians and the public in general to get back of this proposition and make it go.

C. M. CRIST.

## READING CIRCLE

### ENTHUSIASTIC INTEREST MARKS MEETING AT GLENDALE CITY LIBRARY

Mrs. A. A. Barton presided at the meeting of the Mutual Benefit Reading Circle held Wednesday afternoon in the juvenile room of the Public Library on Harvard street. It was a large and enthusiastic gathering.

Mrs. Pendleton gave a review of an article entitled: "New Ideals in Education," by Lloyd Haldane. It dealt mostly with education in England and Scotland and many of the things proposed have already been inaugurated in the United States. The author declared that the individual should be taught to concentrate but not to shut himself up to one idea; that we need a general education; the whole man must have a whole mind.

Mrs. Burr reported that Mrs. B. Lockwood was the first member of the Reading Circle to complete the reading course laid out by the government, which means that she has sent in a review of each book put out by the government.

Mrs. Barton explained the manner in which school money is received and the Circle signed a card addressed to Supervisor Dodge asking for an increase of 50c on the hundred dollars in the county taxes. Mrs. Barton men urged the Chautauqua Course and urged all present to buy season tickets.

Announcement was made that Mrs. Burr would represent the Reading Circle in a five-minute talk at the State Convention of the Congress of Mothers and Parent-Teacher Associations.

Mrs. Cotton had charge of the afternoon program and the Circle read a chapter on "The Value of the Child as a Witness." The author contended that a child's testimony would be absolutely valueless. Some difference of opinion was expressed in the discussion which followed the reading, but a good many thought the declaration of the author was true.

## THE GREAT PUSH IS ON

### AMERICAN LEGION IN EFFORT TO SECURE MANY NEW MEMBERS

The American Legion will hold a campaign for new members the week of May 17-22 that will be "different."

The great American public, which has been the "drivee" in so many intensive efforts of the last several years, has cultivated a fine taste in campaigns. It has come to be able to spot a good drive from one that is poorly handled. It can distinguish points of variety in a campaign. It has become a connoisseur in appeal.

The public, then, will be quick to recognize the essential difference of this American Legion effort.

In the first place, it is not a "drive," but a "push."

A feature that the great general public should be quick to realize is that they, members of the public, will not be called on to contribute anything except good will. Positively no money contributions will be expected or received from them. They will be expected to exhibit their friendship, but not their check-books.

Only some four million men are (Continued on Page 5)



# Your Sport Hat

You will enjoy your vacation and your week-end outings much more if you are suitably costumed. Your hat must be light to be comfortable and it must be becoming and stylish.

WE ARE MAKING SPECIAL PRICES ON SPORT HATS, AND WE HAVE A NICE LINE OF THEM

See Our

White Milans  
Crepe Hats  
Light Straws

SILK HAND BAGS LEATHER BAGS  
ITALIAN JET BEADS

Mrs. Grace S. Yarbrough

105 S. Brand Blvd.

Glendale 293

# The Help Problem

is a serious one for women who have not equipped their homes with labor-saving electrical appliances.

Electricity is the cleanest, cheapest and most rapid help you can employ. Why not let it cook, wash, clean, iron, sew and do the myriad other household tasks of which it is capable?

ARE YOU INTERESTED IN A  
WASHER OR CLEANER?

Let our salesman call at your home  
—and demonstrate to you—

Call Glendale 568 for Appointment

# Jewel Electric Co.

202 E. Broadway

Glendale 568

# BANK ACCOUNT IS MAGNET

Bring your first deposit to our bank today and we will show you a little magnet concealed in it.

You will find that tomorrow and each day following this magnet will draw to itself all the small change you have been spending foolishly.

It will soon have you a bank account you will be proud of owning.

Why not try it today?

# The First National Bank

Glendale, Cal.

## NEW ZEALAND

(Continued from Page 1)  
Poole, of Auckland, explained that he was a New Zealander by adoption and was originally a sea-captain. He described his country as an emerald gem of the Southwest Pacific 7000 miles away which had such an evanescent quality that it ought to have an anchor and cable to make sure of its stability. Its land area, he said, is equivalent to England, Scotland, Wales and part of Ireland. Eleven hundred miles in length, no part of it is more than 75 miles from the seaboard. It has nearly 5000 miles of coast line and the people are nearly amphibious. The objection to going there raised by an American was that he walked in his sleep and was afraid he might step off some night. He told how the island was visited by Tasman, the Dutch navigator, who found it an unhealthy port for good, juicy sailors likely to tempt cannibalistic appetites and who sailed away without raising the Dutch flag as did also the French and Spaniards who came later. Even the American whalers who put in there thirty ships at a time had no thought of taking possession of the island and it was left for English colonists to run up the Union Jack in 1842. By 1854 New Zealanders had a constitution of their own and were a free people with a tariff wall raised against England, though, as the speaker explained, "the miracle of sentiment was still in operation and to this day when ready to travel the New Zealanders declare they are going back home to England." He quoted the saying that "the British Empire is a federation of free peoples." The New Zealanders continue to give Great Britain \$500,000 annually for the services of her fleet in their protection, and when the war broke out, that colony was the first to go to the assistance of the Allies. Out of a population of 1,100,000, New Zealand sent to battle 110,000 fighting men, and nearly 18,000 who fell at Gallipoli, in Mesopotamia, or in France, are sleeping their last sleep far from home.

The story of how New Zealand was the first to emancipate her women and give them rights and responsibilities as citizens equal to those of men was told, and her advanced legislation—the free education provided for children from kindergarten to university, the old age pensions, the relief from taxation after the age of sixty. To meet this expense the government has taken nine million acres of land and set it aside forever and all the rentals from that land are devoted to the maintenance of schools and old age pensions.

The way in which New Zealand met the issue of a decline in marriage brought about by the high cost of living and the shrinking from financial responsibilities, as recounted by the orator, was to say to her young people who had fallen in love: "We will come to the rescue. If you are modest in your demands you can go to one of our departments and there look over plans for a home. When you have chosen one we will send a supervisor to overlook the building of it and when it is finished we want you to settle down in it. You will be expected to pay us \$50 down and we will give you 25 years in which to meet your liabilities and any improvements you make are yours." A similar offer has been made to the penniless man who desires to go onto land. To encourage this the government has taken land it already owned and has bought up other tracts which have been cut up and leased to the men who have been given a tenure for 99 years. These assisted farmers have prospered so well, according to Mr. Poole, that they are running around in high-class motor cars and blessing the government that put them on the land.

The state has gone into business along many lines. New Zealand has state insurance, state coal mines, and the water resources of the country have been developed and harnessed to provide hydro-electric power to be sold to the people at cost. The state owns other public utilities and railroads, telegraph and telephone lines.

The address was most interesting and the audience was responsive to the friendly spirit with which the speaker delivered his message, and his expressions of appreciation for the care bestowed upon the Anzacs when they passed through this country on their way home from the war to New Zealand.

### Thursday Evening

The evening program so far as the portion contributed by the Royal Welsh Lady Singers was concerned was an elaboration of the afternoon repertoire, and consisted of choruses, solos, quartettes, etc., and recitations of a light character which prepared the audience for the address of Judge George Alden, descendant of John Alden and Priscilla of Puritan fame. He is a very fine raconteur and kept his audience in a gale of laughter most of the time. He explained in the beginning that "The Powder and the Match" was his title and had nothing to do with the subject matter of his lecture. He said some excellent things which, but for his destroying sense of humor which led him to digress with an anecdote when about to make a serious point would have left a deep impression on his audience. He

# SPECIAL PURCHASE OFFER

By making a special purchase of a large quantity, we are in a position to sell three household necessities at this special price

## BUY THE COMBINATION

One package Sea Foam Washing Powder.....	30c
Three bars Ben Hur Soap.....	21c
One bar Creme Oil Soap.....	10c
<b>Total.....</b>	<b>61c</b>

## THE THREE ARTICLES---ONE PURCHASE 50c

### RIVIERA BRAND OYSTERS

A high grade product and an excellent oyster for soup. A very good article to have on hand for the unexpected guest.

2 TINS FOR  
35c

### DARRO LINE CLAMS

They are the ocean razor minced clams. Something real good for a delightful soup or rich nutritious chowder. Simply heat, add milk and serve. In 3 minutes you have a delicious soup.

15c TIN

## MEAT DEPARTMENT

Pot Roasts.....	18c-20c lb	Picnic Hams.....	28c lb
Legs Lamb.....	38c lb	Bacon Strips.....	30c lb
Shoulders Lamb.....	30c lb	Pure Lard.....	30c lb

IF IT IS FRESH MEATS, POULTRY OR RABBITS, WE HAVE IT

S  
O  
U  
T  
H  
E  
R  
N

# Chaffees

WHERE CASH BEATS CREDIT

C  
A  
L  
I  
F  
O  
R  
N  
I  
A

Sixty-One Stores

made a fine peroration when he finally reached his real message which concerned social purity and which was an exhortation to parents to early take their children into their confidence; to tell them the facts concerning the origin of being and not leave them exposed to contamination of filthy misinformation which pollutes the child's mind and paves the way for vice and for physical and moral degeneration.

As mentioned he made many effective statements such as: "Every forward movement was started by a crank. Columbus and Franklin were the cranks of their day and we all remember when the crazy Wright Brothers in Dayton, Ohio, thought they could fly. You cannot even start a Ford without a crank."

"It is my belief that a knowledge of history is an essential to good citizenship. Democracy will never stand unless the people as a whole understand democracy."

"We think we are facing new problems, but are they new? No. Today is but the child of yesterday. No nation has ever died of old age but from disease developed into a mortal malady by the patient's own folly and indifference in regard to seeking a remedy. Indifference has ever been the powder to which the match of revolution has been applied."

"The modern generation demands a prophet not a historian, but there is nothing new under the sun. The passion and prejudice which crucified a Christ in the first century, will as quickly drive the nail into the quivering hand of right today and press the crown of thorns upon its head."

"We are in an age of eternal movement, and never stop long enough to let the cream rise. \* \* \* I feel sorry for the man condemned to be an educational pauper. What is an education? It isn't four years in an university. It isn't what you have gone through but what has gone through you. Education is the only hall mark of aristocracy in a democracy."

"You can never make men honest by laws alone. You cannot stop profiteering by law. You can only make men cuter and slyer. Public opinion has caused the condition from which we are now suffering and public opinion will relieve it. When we are honest ourselves we are going to honor a man not for the goods

he has acquired but for the good he has accomplished, we are going to honor him not for cash but for character. As a man who has come out of the clouds of atheism I want to say to you there is but one standard of manhood upon which to build our nation's life and that was the stan-

dard set for us 1900 years ago. We acknowledge the greatness of that life but were He to come again would He receive the welcome in the flesh that we pretend to give Him in the spirit? Would He not be forced again to play the role of the rejected?"

# The Hoffman Instantaneous Automatic Hot Water Heater

- † places at your command day or night an inexhaustible supply of steaming hot water.
- † Features that distinguish the Hoffman from the ordinary heater are:
- † Simplicity of working parts.
- † Smaller gas consumption due to superior construction of burner.
- † Superior materials used in its construction.
- † Absolute dependability and long life of continuous service.
- † Hot water instantly.

† Let us install a Hoffman for you.  
† If you think another heater will better suit your needs talk it over with us

# E. COKER The Plumber

121 N. Brand Blvd.

Glendale 647



Charter Number 7987

Reserve District No. 12

# REPORT OF CONDITION —OF THE— FIRST NATIONAL BANK

AT GLENDALE, IN THE STATE OF CALIFORNIA, AT THE CLOSE OF BUSINESS  
ON MAY 4TH, 1920

RESOURCES		LIABILITIES	
1. a Loans and discounts, including rediscounts (except those shown in b and c).....	\$849,500.92	19. Redemption fund with U. S. Treasurer and due from U. S. Treasurer.....	1,250.00
2. Overdrafts, unsecured.....	1,126.01	20. Interest earned but not collected—approximate—on Notes and Bills Receivable not past due.....	275.57
5. U. S. Government securities owned:		<b>TOTAL</b> .....	<b>\$1,619,239.73</b>
a Deposited to secure circulation (U. S. bonds par value).....	25,000.00	<b>LIABILITIES</b>	
d Pledged as collateral for State or other deposits or bills payable.....	55,000.00	22. Capital stock paid in.....	\$ 25,000.00
f Owned and unpledged.....	73,872.18	23. Surplus fund.....	25,000.00
h War Savings Certificates and Thrift Stamps actually owned.....	67,000.00	24. a Undivided profits.....	\$ 43,765.25
Total U. S. Gov. securities.....	220,872.18	b Less current expenses, interest, and taxes paid.....	16,689.20
6. Other bonds, securities, etc.:		25. Interest and discount collected or credited in advance of maturity and not earned—(approximate).....	4,739.20
c Bonds and securities (other than U. S. securities) pledged as collateral for State or other deposits (postal excluded) or bills payable.....	12,000.00	28. Circulating notes outstanding.....	22,397.50
e Securities, other than U. S. bonds (not including stocks) owned and unpledged.....	142,787.78	31. Net amounts due to banks, bankers and trust companies (other than included in Items 29 or 30).....	10,884.72
f Collateral trust and other notes of corporations issued for not less than ONE YEAR nor more than THREE YEARS' time.....	30,245.78	32. Certified checks outstanding.....	549.54
Total bonds, securities, etc., other than U. S.....	185,033.56	33. Cashier's checks on own bank outstanding.....	22,386.47
7. Stocks other than Federal Reserve Bank stock.....	725.00	Total of Items 30, 31, 32 and 33 Demand deposits (other than bank deposits) subject to Reserve (deposits payable within 30 days):	33,820.73
8. Stock of Federal Reserve Bank (50 per cent of subscription).....	1,500.00	34. Individual deposits subject to check.....	1,125,557.14
9. a Value of banking house owned and unincumbered.....	27,600.00	35. Certificates of deposit due in less than 30 days (other than for money borrowed).....	71,978.89
b Equity in Banking house.....	27,600.00	36. State, county or other municipal deposits secured by pledge of assets of this bank.....	67,412.55
10. Furniture and fixtures.....	16,525.65	Total of demand deposits (other than bank deposits) subject to reserve, Items 34, 35, 36, 37, 38, and 39.....	1,264,948.58
11. Real estate owned other than banking house.....	570.00	Time deposits subject to Reserve (payable after 30 days, or subject to 30 days or more notice, and postal savings):	
12. Lawful reserve with Federal Reserve bank.....	98,474.91	40. Certificates of deposit (other than for money borrowed).....	172,277.63
14. Cash in vault and net amounts due from national banks.....	206,246.43	43. Other time deposits.....	43,980.04
17. Checks on other banks in the same city or town as reporting bank (other than Item 16).....	9,098.01	Total of time deposits subject to Reserve, Items 40, 41, 42 and 43.....	216,257.67
Total of Items 13, 14, 15, 16, and 17.....	215,344.44	<b>TOTAL</b> .....	<b>\$1,619,239.73</b>
18. Checks on banks located outside of city or town of reporting bank and other cash items.....	441.49		

STATE OF CALIFORNIA, ss:  
County of Los Angeles,

I, R. F. Kitterman, Cashier of the above-named bank, do solemnly swear that the above statement is true to the best of my knowledge and belief.

R. F. KITTERMAN, Cashier.  
Correct—Attest:  
C. C. COOPER,  
W. W. LEE,  
GEO. T. PAINE,  
E. U. EMERY,  
Directors.

Subscribed and sworn to before me this 13th day of May, 1920.  
WINNIFRED TRAVER, Notary Public.

## TRUSTEES' MEETING

(Continued from Page 1)

connected with the city. The communication stated that the report of a committee appointed to investigate the matter unanimously recommended as follows: First, purchase of a site on Brand Blvd. not less than 50 ft. wide. Second, employment of an architect to prepare plans and specifications for building of two stories and basement. Third, this building to be designed to house a branch business office of the City of Glendale as set forth above.

The communication was accompanied by options for a period of six months from April 6, 1920, on Lot 24, Tract No. 618, in the City of Glendale, signed by A. G. Spohr and L. S. Thomas. The communication stated that the report and recommendations of the committee had the unanimous approval of the Association and urged that the Board of Trustees take action looking to an accomplishment of this object. On motion of Trustee Henry, the matter was referred to the Committee of the Whole.

A communication was read from Evans and Huntley accepting the terms and conditions prescribed by the city for the extension of the water supply to their property near Kenneth Road north of the City of Glendale. The communication was ordered to be filed.

The resignation of J. P. Lampert, City Marshal, was presented to the Board to take effect June 15, 1920, and on motion of Trustee Henry, the same was accepted.

The Engineer of the Public Service Department presented a report on electric cast-iron pipe bids and recommended that the bid of the United States Cast Iron Pipe & Foundry Company for cast iron pipe be accepted. On motion of Trustee Henry, the recommendation of the Engineer was adopted and a contract ordered to be entered into in accordance with the same.

Demands were presented and referred to the Finance Committee. Later, the Finance Committee reported back the demands approved, and on motion of Trustee Stephenson, warrants were ordered to be issued in payment of the same.

The City Manager presented to the Board an ordinance which had been prepared covering the matter of the removal of trees, and the general control by the city of tree planting, care and removal, and in connection with the same exhibited a map which had been prepared showing the work accomplished by the Forestry Dept. during the past five years, during which time 12,000 trees had been planted by the city.

The City Manager called attention to the revised plumbing ordinance emphasizing the necessity for an up-to-date ordinance covering the matter of plumbing. On motion of Trustee Henry referred to the Committee of the Whole.

In regard to the request of the Parent-Teachers' Association, that the city furnish banners for automobiles to be used on the occasion of the entertainment of delegates from the convention in Los Angeles, as set forth in the communication presented to the Board at the regular meeting of May 6th, it was recommended that about 200 printed paper banners be furnished for the occasion, and on motion of Trustee Stephenson, the City Manager was instructed to procure banners in accordance with his recommendation, the total cost not to exceed \$25.00.

The City Manager made a report in regard to the proposed increase of 10 per cent in electric light and power bills made necessary by the increase of 27 per cent allowed to the Edison Company by the Railroad Commission. In this connection, Mrs. Coker addressed the Board on the part of the Crystal Ice Company stating that in the City of Los Angeles a lower rate is given to the users of large quantities of electricity and expressing the opinion that the City of Glendale ought to make a similar discrimination.

Trustee Bartlett, Chairman of the Welfare Committee, read a letter addressed to the committee by Mrs. Franklin, the applicant for hospital permit on East California street, and on her motion, a hearing was set for this matter for Thursday next, May 20th, at 8 o'clock p. m.

The City Engineer made a report and presented maps of tracts No. 3694, and No. 3671, approving of the same, and on motion of Trustee Henry, the Board adopted the Engineer's recommendations and the maps were approved.

The City Attorney reported the filing of a condemnation suit in the matter of the opening of Kenilworth avenue from Vine street to Riverdale Drive.

An ordinance previously presented to the Board granting to the Standard Oil Co. permission to cross with a spur track a certain street in the City of Glendale, was, on motion of Trustee Henry, adopted as ordinance No. 379.

Trustee Stephenson offered a resolution, which was on his motion adopted as Resolution No. 1099. "A Resolution of the Board of Trustees of the City of Glendale adding 10 per cent to the charges for electricity sold within the City of Glendale."

The matter of rates for electric power was referred to the City Manager to report upon at the next meeting.



129 N. BRAND BOULEVARD, GLENDALE

Phone, Glendale 1161

ROBERT S. JENSEN, Manager.

MATINEE EVERY DAY AT 2:30  
TWO EVENING SHOWS—6:45 AND 8:45

SATURDAY, MAY 15  
WILL ROGERS IN "THE STRANGE BOARDER"

SUNDAY, MAY 16  
"THE CONFESSION"

MONDAY, MAY 17  
CHARLES RAY IN "RED HOT DOLLARS"

TUESDAY, MAY 18  
TOM MIX IN "THE CYCLONE"

WEDNESDAY AND THURSDAY, MAY 19 AND 20  
JACK LONDON'S "THE SEA WOLF"

FRIDAY, MAY 21  
"THE RIVER'S END"

SATURDAY, MAY 22  
"ALIAS JIMMY VALENTINE" AND "THE FLY COP"

# CHRISTY'S

## Grocery and Market

115 South Brand Blvd.

### JAMS AND JELLIES—

We have just received a new shipment of Tea Garden and Lippincott's Jams and Jellies—a fine assortment of kinds, per jar..... 25c up

### BROOMS—

**SATURDAY SPECIAL**

A \$1.25 Broom for..... \$1.00  
Other Brooms for..... 70c, 90c, \$1, \$1.10, \$1.25

### SHORTENINGS—

Cottolene, 2-lb can..... \$ .70  
Suetene, 2 lb 57c; 4 lb \$1.10; 8 lb..... 2.15  
Crisco 1 lb 33c; 1 1/2 lb 49c; 3 lb 95c; 6 lb 1.85  
Violet 1 lb 33c; 1 1/2 lb 49c; 6 lb..... 1.85  
Mazola pt. 40c; qt. 75c; 1-2 gal. 1.45; gal 2.75

### SCHILLING'S—

Schilling's Coffee lb 60c; 2 1/2 lb..... 1.45  
Schilling's Spices..... 10c, 15c and .20  
Schilling's Baking Powder 8 oz..... .25  
" Baking Powder 12 oz. 35c; 16 oz. .45

### MEATS—

We carry only A-1 meats. Call and get your Sunday meat, or phone 859 and we will deliver it.

Peanut Butter, the best, lb..... 25c

WE DELIVER

PHONE 859

**VERDUGO RANCH**  
W. P. BULLOCK, Prop.  
NATURAL JERSEY MILK  
Milked and Bottled on our own Farm  
Coffee Cream—Whipping Cream  
Night Deliveries in Glendale  
No Telephone Connection

**MOUNTAIN VIEW REST**  
Treatments Given by Experienced Nurses  
PRICES REASONABLE  
1425 E. CALIFORNIA AVE.  
PHONE GLENDALE 1646-J

**CESSPOOLS**  
Arrange for Your Cesspool  
at 131 S. Brand  
Glendale 408

Don't throw away a broken metal article—Take it to the  
**Glendale Welding and Brazing Co.**  
217 E. Bdw. Glen. 2000-W

**NOTICE TO CREDITORS**  
No. 43672  
Estate of George Lewis Gardner, deceased. Notice is hereby given by the undersigned Administrator of the Estate of George Lewis Gardner, deceased, to the Creditors of, and all persons having claims against the said deceased, to exhibit them with the necessary vouchers, within four months after the first publication of this notice, to the said Administrator at the office of Henry P. Goodwin, 231-2-3 Title Insurance Building, City of Los Angeles, County of Los Angeles, State of California, which said office the undersigned selects as a place of business in all matters connected with said estate, or to file them with the necessary vouchers within four months after the first publication of this notice in the office of the Clerk of the Superior Court of the State of California in and for the County of Los Angeles.  
Dated April 21st, 1920.  
C. W. SLEEPER,  
Administrator of said estate.  
HENRY P. GOODWIN,  
231-2-3 Title Insurance Bldg.,  
Attorney for said estate.  
First publication April 23, 1920.  
Advertise in the Evening News.

**THORNYCROFT SANITARIUM**  
1100 E. Windsor Road  
AGED PEOPLE A SPECIALTY  
Telephone Glendale 70

**WE GRIND LAWN MOWERS**  
WM. A. PFEIFER  
BICYCLES  
Glen. 188-W. 108 W. Broadway  
It is reported that Carranza is about to flee from Mexico. Possibly he wishes to join Herr Hohenzollern in Holland.

**We Want to Say This**  
to your face—we keep our business friends by keeping our word and we keep your goods in our storage in a manner that's in keeping with our careful methods. Keep this in mind—we keep right on the job when you employ us.

**KEEPING YOUR WORD AND KEEPING YOUR FRIENDS ARE ONE AND THE SAME THING**

**Robinson Bros'. Transfer and Fireproof Storage Co.**  
304-306 S. Brand Blvd. Phones: Sunset, 428; Night, 1178-J

WHEN IT'S YOUR MOVE  
LET US KNOW!

Doctors are cautioned to be careful in their diagnosis in cases where whisky is prescribed, but the patient is not likely to object to the remedy even if he has something different from what the doctor thinks he has.



# THE GLENDALE EVENING NEWS

Published Daily Except Sunday

A. T. COWAN - - - - - Publisher and Proprietor

Office of Publication, 304 East Broadway  
PHONE-GLENDALE 132

Entered as second-class matter Sept. 12, 1913, at the Postoffice at Los Angeles, Cal., under the Act of March 3, 1879.

SUBSCRIPTION RATE—Single Copy, 5 Cents; One Year, \$5.00; Six Months, \$2.75; Three Months, \$1.40; Two Months, \$1.00; One Month, 60c

GLENDALE, CALIFORNIA, FRIDAY, MAY 14, 1920

## EXPECTATIONS NOT FULFILLED

The vote that is being cast in the presidential primaries indicates that at least one-half the voters—in some cases a vastly greater proportion—are entirely indifferent as to a choice for the highest office in the land. The primary is designed to place directly in the hands of voters of a party the nomination of candidates or, in a presidential year, to give each elector the privilege of signifying his choice for the presidency.

That so great a proportion neglects to exercise the privilege, which in a republic is not less a duty of citizenship, indicates a woeful lack of interest in governmental affairs. While it is possible that the vote cast, though but a fraction of the total, is an index of what it would be were every voter to deposit his ballot, of that we cannot be assured. We can know exactly the voice of the people only when all the people speak.

Considering the problems that have grown out of the war and the importance of economic and capable government to every citizen, we might with reason have expected that primaries would show the full voting strength of parties, especially where there is a contest. That the result has been otherwise is not reassuring. Direct government, as expressed through the primary, has failed to come up to the expectations because of the disinterestedness of the voters.

The paroled Illinois prisoner who scaled the wall in order to get back into the penitentiary after three weeks of freedom reversed the usual order, but he had a good reason. He could not stand the cost of living on the outside.

## ANNOUNCEMENTS

### ADVERTISEMENTS

#### NOTICE

On account of an increase of 27% granted by the State Railroad Commission to the Southern California Edison Co., from whom the city of Glendale buys its electric current for distributing purposes, affecting bills issued on or after April 20, the City of Glendale will increase all bills for electricity 10%, effective after May 31, 1920.

#### DRESSMAKING

Miss Nelle Hindman will do first-class dressmaking in your home. Address 131 N. Orange Street.

#### RECITAL

A recital by pupils of Pearl G. Curran and Hazel Linkogel will be given Saturday, May 15, 8 p. m. at the Odd Fellows' Hall, 111 1/2 E. Broadway. The public is cordially invited.

## CLASSIFIED ADS

### FOR SALE

FOR SALE—9 room modern house on North Kenwood. One of the finest homes in Glendale. Three bedrooms and one sleeping porch. Plenty of closets, den and breakfast room. Good basement and garage. Bearing fruit trees. Let us show you this place. \$10,000.

7 room completely furnished story and a half house. Three bedrooms, large lot, garage and good basement. Two blocks from car line on good street. A bargain. \$6500.

One of the finest 7 room bungalows in Glendale on North Maryland. Has disappearing bed in den. Two bedrooms and breakfast room, basement, garage and variety of bearing fruit. \$6500.

7 room modern bungalow completely furnished including piano. Close in on fine street. Basement, garage and variety of bearing fruit. A real bargain for \$7000.

8 room story and a half house. Four bedrooms, sleeping porch and good basement. Close in. A real home. Must be seen to be appreciated. Immediate possession. \$6000.

5 room modern bungalow, good garage and basement. Extra large lot. Variety of bearing fruit. Good location. \$4300.

5 room California house. Close in. Bargain at \$2500.

See A. A. Barstow with J. F. Stanford, 117 South Brand. Phone Glendale 40. Residence, Glendale 94-J.

5 room Calif. house, bath, good street, walking distance, \$750 cash and \$30 per month. Price \$2200.

6 room modern bungalow, sleeping porch, strictly first class, in perfect condition, one of the best homes on our list, special price for quick sale, \$6000.

Almost an acre lot on good paved street about three blocks from Brand Blvd., 5 room cottage, bath, large front and side porch, barn or garage with a living room and feed house, some chicken equipment, fruit trees, flowers, \$1500 cash. Price \$5000.

5 room Colonial, three years old, lot 40x145, close in, \$500 cash, \$30 per month. Price \$5000.

5 room new Colonial, all the latest modern conveniences, 2 blocks from Brand Blvd., garage, \$1000 cash, \$45 per month. \$5250.

6 room up-to-date bungalow, hardwood floors, cement porch, beautiful grounds, assortment of fruit, flowers, large lot \$2500 cash. Mtg. \$2000. Price \$4500.

**GLENDALE REALTY CO.**  
103 1/2 S. Brand Blvd.  
Phone 44

**MUST SELL**—Modern bungalow on lot 110x264, and entire stock of Ancona and Leghorn hens from good strain. Reasonable. 907 E. Lomita.

## TIME TABLE

### Pasadena-Ocean Park BUS LINE

Hourly service between Glendale and Pasadena and hourly service between Glendale and the beaches. Cars go east 15 minutes after every hour omitting 9:15 a. m. Going west 30 minutes after every hour. Last car reaching Glendale from beaches 9:15 p. m.

**FOR SALE BY OWNER**—Save that commission and see this beautiful home of 8 rooms and fine double lot on desirable corner. Colonial house with many added comforts. Shown only by appointment. Box 877, Evening News.

**FOR SALE**—Lot on West Harvard. \$300 for quick sale. Phone Glendale 1930.

**FOR SALE**—Nice homelike bungalow, five rooms and breakfast room. Hardwood floors, chimney nook, best plumbing, two blocks to car line. Bearing fruit trees. Bargain, \$4500. See James W. Pearson, 128 N. Brand Blvd. Phone Glendale 346.

**FOR SALE**—7 room modern home, 3-large bedrooms, built-in features. Double garage, lot 60x150 feet, beautiful corner property and mountain view. Grab this now. Only \$5750. Possession at once. See H. S. Parker today. 128 West Broadway.

**FOR SALE**—Colonial bungalow, 5 rooms and breakfast nook. Beautiful hardwood floors. Built about two years ago and built right. Snap at \$5500. Only \$1500 cash. Hal Daycoport, 1247 S. Brand. Phone Glendale 255-J. Fire Insurance. Lowest rates.

**FOR SALE**—Ideal apartment and business lot on Vermont Avenue, 250 feet from Vernon in Los Angeles. On cross town car line. \$3500. Terms. A good investment. Owner, 110 West Harvard Street.

**FOR SALE**—I have a nice new five room house for someone who wants a sweet little home. F. W. Pigg. Phone 1268.

**FOR SALE**—5 1/2 acres of the best land in Glendale. Located on through boulevard. One acre blackberries, some potatoes, alfalfa, grain, etc. Only \$6000.

SEE E. P. HAYWARD  
Glendale 250 139 N. Brand

**DO YOU WANT** to buy a summer home at beautiful Hermosa Beach? I have all kinds of bargains from \$1000 up at this fine summer resort and will be glad to show anyone wishing to buy. C. E. Blake, 923 N. Louise St. Phone Glendale 2133-R.

**FOR SALE**—Fine six three-room apartments furnished, netting 12% on price. Part cash, part trade and time. See Mrs. Stevens, 735 East Wilson Avenue.

**FOR SALE**—Cozy four room house in Casa Verdugo, near car, stores and school. Ideal for couple. Will sell for small payment down, balance monthly payments. Owner on premises Sunday, one to four. 1112 Viola Avenue, North Glendale, near Central and Stocker. Or call Los Angeles Home phone 63282.

**FOR SALE**—5 room modern bungalow and large sleeping porch. Garage. Close in on good street. A bargain at \$3500. See A. A. Barstow, with J. F. Stanford, 117 S. Brand. Phone Glendale 40. Residence, Glendale 94-J.

**FOR SALE**—1 1/2 and 2 acre lots on Verdugo Boulevard between Montrose and Glendale. All improved with fruit trees in full bearing. These lots are beautiful home sites. See R. Verdugo, owner, 219 East Garfield Ave., Glendale, or J. Kirkby, living 2 blocks south of property. Mail address R. 13, Box 3.

**PARTY LEAVING** town will sell furnished 5 room modern cottage, newly decorated, 2 sleeping porches. Also Ford car, laying hens, pullets and wood. 312 N. Belmont Street.

**FOR SALE**—Modern five room house, garage, large lot, fruit. See owner, 914 E. Acacia Street.

**FOR SALE**—New 5 room bungalow, close in, handy to school and church, one block from car line. For particulars inquire of owner on premises, 208 North Jackson.

**FOR SALE**—Attractive home place of Ella W. Richardson, 525 S. Central Avenue and Riverdale Drive. Fenced, 9 rooms, 2 baths, every convenience. Double garage, fruit. Terms. Inspection by appointment. Phone Glendale 1559-J.

**FOR SALE**—5 room bungalow, strictly modern. Garage. Close in on Salem. By owner. \$4500. Inquire 221 N. Central. Phone Glendale 563-J.

**FOR SALE**—5 room house, lot 75x115. A bargain. Call 904 East Wilson.

**FOR SALE**—Homes from \$3000 to \$7500. E. Goodman, 645 N. Central Avenue. Phone Glendale 879-J.

**LIST** your property with us; if we can't sell it, it can't be sold. Call, phone or write Harry W. Chase or H. S. Burn, 108 N. Brand Blvd. Phone Glendale 190.

**FOR SALE**—Half or whole Forest Lawn Cemetery Lot on high, sloping ground near Church of the Flowers. Owner offers bargain for quick sale. Phone 2233-R.

**FOR SURVEYING** and subdividing Call Glendale 469.

**FOR MAPPING** and blueprinting, call Glendale 469.

**FOR SALE**—Library table. Phone Glendale 1181 or call at 452 Vine Street after 8 p. m.

**FURNITURE FOR SALE**—Call at 422 N. Jackson or 517 N. Jackson.

**FOR SALE OR RENT**—One invalid chair. Taylor Furniture Co., 520 E. Broadway. Not incorporated.

**FOR SALE**—A light brown wicker baby carriage. Good condition, \$20. 1527 Rock Glen Avenue. Phone Glendale 1995-J.

**FOR SALE**—Baby cab, bed and mattress. Cheap. A. H. Sherman, 516 S. Central Avenue.

**FOR SALE**—White Leghorn laying hens. Apply 1237 Valley View Road. Wm. H. Barr.

**FOR SALE**—Baby chicks, 18 cents. Anconas, White Minorcas, Brown Leghorns, with or without mother. Month old R. I. Reds, White Rocks, 30 cents. 332 Ethel Street. Near 800 North Louise.

**FOR SALE**—50 White Leghorn pullets, 10 months old, 200 White Leghorn hens, 1 1/2 years old. Very best of layers. Borzage Ranch, 720 N. Louise Street. Phone Glendale 1265-J.

**FOR SALE**—Three milk goats. One 3-4 registered Toggenberg, fresh June 5. One three-quarter Saanen and grade doe. Also rabbits, old and young, and baby chicks. Call before Sunday, 1122 E. Wilson.

Fine family Jersey for sale. Gives about 2 gallons of rich milk. Fresh again in November. Bargain, 1119 East Elk.

**FOR SALE**—Gas range in first class condition. Phone Glendale 94-J.

**SPECIAL VALUES IN FURNITURE AND RUGS**  
A ten-floor metropolitan assortment located within easy reach by auto or rail—low overhead expense and factory buying enable us to offer excellent values—careful delivery in our own trucks—plenty of places to park your car nearby and shop in comfort—it will be pleasant and profitable to come—courteous attention—careful service.

**PASADENA FURNITURE COMPANY**  
Raymond and Holly Pasadena

**PAGE'S TYPEWRITER EXCHANGE**, 625 S. Spring Street, Los Angeles. Royal agents for all of Southern California excluding Los Angeles. All makes bought, sold, repaired and rented. Pico 3361.

**FOR SALE**—A small gas range. Very cheap. 1201 Viola. Phone Glendale 299-R.

**FOR SALE**—Singer sewing machine. Drop head. Perfect running order. Bargain. 109 N. Brand Blvd.

**TRUCK SERVICE**, Harry's Truck Co., 114 E. Broadway, Glendale 180.

**VELIE TOURING** automobile on sale for private owner. All in fine condition. Price and terms reasonable. Roakes Garage, 1006 South Brand. Phone Glendale 833.

**FOR SALE**—1920 Maxwell. Driven less than 7000 miles. In perfect mechanical condition. Like new. Am going East. Will sell for \$1000. Terms, if desired, \$300 down. 715 N. Louise Street. Phone 1265-W.

**FOR SALE**—Second-hand wash and doors, wall beds, coal and wood stove. Phone Glendale 395-J.

**FOR SALE**—Scripps-Booth 8 Chummy roadster. Wire wheels. Lots of speed and power. Owner going East. Must sell at once. Call at store, Vine and Pacific Avenue.

**FOR SALE**—Chevrolet touring car, 1918. Model 490. Owner leaving city next week. Must sell. Phone Glendale 434-J or call 223 North Adams Street.

**FOR SALE**—Furniture, 2 bedroom sets, metal bed and springs, dining room chairs, rockers, etc. All in good condition. Part of them nearly new. 715 N. Louise. Phone 1265-W.

**GOATS FOR SALE**—A few out of my splendid herd of choice Toggenberg and Saanen goats. Heavy milkers, some registered. Also handsome kids. California Swiss Goat Ranch, 1029 N. Pacific Avenue. Near Dryden. Phone Glendale 364.

**FOR SALE**—Goat fertilizer, one of the best fertilizers known. Glendale 364. 1029 N. Pacific Avenue, facing Palm Avenue.

**FOR SALE**—4-burner gas range or would exchange for laying or setting hens. Also some furniture. Call 1037 San Rafael.

## FOR RENT

**FOR RENT**—Furnished two room cottage, also garage. 1233 Boynton, Phone Glendale 1540-R.

**FOR RENT**—Furnished apartment, 3 rooms. Nice and pleasant. 735 E. Wilson.

**FOR RENT**—Large comfortably furnished room connected with bath. Good board. In modern home conveniently located. \$15 for one; \$25 for two. Phone Glendale 2159-W.

**FOR RENT**—4-room furnished bungalow. Bath, garage, fruit and flowers. Inquire 336 N. Louise.

**FOR RENT**—Furnished room. C. S. preferred. Phone Glendale 1524-W.

**FOR RENT**—Furnished room. Garage if desired. 218 Milford St. Phone Glendale 1360-J.

**FOR RENT**—Furnished tent house. 1205 S. Maryland.

**FOR RENT**—3 room apartment, large rooms, completely furnished. Call 724 E. Broadway. Phone 73-J.

**FOR RENT**—Prettily furnished room near Brand. Also garage. Box 604. Glendale News.

**TO RENT**—Large sunny room, adjoining bath. One block from Broadway. 830 E. Harvard Street. Glendale 1280-W.

**FOR RENT**—Furnished rooms with board; also sleeping porch. Phone Glendale 327-W. 118 East Garfield Avenue.

## WANTED

**WANTED**—Have clients who want Glendale properties. 1-2 to 2 acres, improved. State price and terms. F. A. Swain, care of Edward D. Silent & Co., 735 S. Hill St., Los Angeles.

**WANTED**—General office work by young woman. Experienced typist and bill clerk. Box 888, Evening News.

**WANTED**—Woman a day each week. I have washing machine and vacuum cleaner. Also want man to do yard work. Burnham, 908 South Central. Phone Glendale 78-W.

**WANTED**—Someone to tutor high school pupil in history and Latin this summer. Phone Glendale 184 evenings.

**WANTED**—To rent 5 or 6 room modern bungalow or 4 room flat furnished, for 6 months or longer lease. Absolutely responsible party. Guarantees and references easily given. No children. Address 307 North Kenwood Street or call Glendale 1948.

**WANTED**—Office or desk space, real estate. Close to Brand and Broadway. Box 312, Glendale Evening News.

**SHAMPOOING** and scalp treatments, facial massage and manicuring done at your own residence. Phone Glendale 1387-W.

**WANTED**, ACREAGE—If you have it and want to sell it—any size pieces, list with us. We are selling everything we get hold of at the right price.

H. L. MILLER CO.  
Glendale 853 109 S. Brand

**WANTED**—Owners of vacant lots to let us build new houses for \$1000 up, complete. Plans and picture shown. Address "H.", 2018 S. Figueroa Street, Los Angeles.

**WANTED**—Blueprint boy, tracer and detailer. Good opportunity for advancement. Apply Mr. Rogers, Engineering Department, Moreland Truck Co., Burbank, Calif.

**WANTED**—Experienced delivery man. Nash & Co., 244 N. Brand.

**WANTED**—Office position by A-1 business woman. Capable of taking charge of office or bookkeeping. Box 747, Evening News.

**WANTED**—Man or woman to clean store, two times a week, evenings. 116 W. Broadway, Broadway Bakery.

I WANT the best lot in Glendale that four to five hundred cash will buy. Address Myers, R. D. No. 11, Box 38, Glendale, Cal.

**WANTED**—A middle aged retired merchant in the best of health wishes a good home and moderate pay for work he can do. Has some knowledge of fruit, poultry and general ranch work. Or will buy about two acres, some fruit. Address "Good Home," Glendale News.

**WANTED**—To buy large dresser and chiffonier within the next 30 days. Phone Glendale 1673 or write Box 2, Evening News.

**WANTED**—Elderly people to board in beautiful home. Nurse in attendance. Phone Glendale 1475-W.

**WANTED TO SELL**—One brass bed, 1 set box springs, 2 full size mattresses, practically new. Also a fine wood range and 2 oak dining room chairs. Must be sold at once. Phone Glendale 1673 or call at 346 W. Lomita Avenue.

**WANTED**—Women and girls at the Glendale Laundry, corner Arden and Columbus.

**WANTED**—Male operators for automatic basket machines. Five day operators and two night operators. Apply Superintendent, Los Angeles Basket Factory.

**CONTRACT** or by hour. General teaming, orchard work, plowing, cultivating, hay and grain mowing and raked, sand and gravel hauled. Satisfaction guaranteed. Address W. E. Palmer, Box 7, Glendale News.

**WANTED**—Curtains and blankets at Golden Rule Curtain Laundry. 35c and 50c per pair. 15% discount if you bring own work. Offer good until phone is installed. 1420 S. San Fernando Road.

**MEN WANTED**—FOX-WOODSUM LUMBER COMPANY.  
A MASSEUSE will give treatment in your home by appointments. Phone Glendale 1997-W. 237 N. Cedar.

**PAPER HANGER**, Painter, Decorator. Day or contract. Davis, 412 1/2 West Cypress, Glendale.

**WANTED**—Few more table boarders by the day or week. Home cooking. Rates reasonable. 310 North Jackson Street. Phone Glendale 227-W.

**CAN START THE PAINTING** or Decorating on your house any time. Have several extra good painters and paper-hangers. Lexie H. Allison, 416 West Maple. Phone Glendale 834.

**WANTED**—Painting, paper hanging and decorating. Drop postal card to R. F. Gomes, 425 Burchett Street, Glendale, Cal.

**WANTED**—Teamsters and laborers. Apply Eddy & Daley, 710 East Broadway.

**WANTED**—Single apartment. Must be close to business district. Address Box D, Evening News.

**WANTED**—Anyone wanting yard or garden work done, inquire G. S. Hess, 106 S. Cedar Street, Glendale.

**ANDY'S EXPRESS & TRANSFER**. Quick service. Phone Glendale 1901. 109 1/2 S. Brand.

**FOR SURVEYING** and subdividing Call Glendale 469.

**FOR REPAIR WORK** on Plumbing and Stoves, ring up Young, the Repair Man, Glendale 276-R. I also sharpen and adjust lawn mowers and do repair work in general. Work guaranteed.

**CONTRACTOR AND BUILDER**  
Garages and Bungalows My Specialty. See R. B. Hammond 508 N. Isabel

**IF YOU WANT** to buy or sell poultry, phone Glendale 551-J.

**TRUCK SERVICE**, Harry's Truck Co., 114 E. Broadway, Glendale 180.

**MONEY WANTED**—We have several clients who desire loans. Good safe investment. Phone Glendale 51. Bentley-Schoeneman Lumber Company.

**SINGER AGENCY**  
Sewing machines, repaired, rented and sold on easy terms. 109 N. Brand. Glendale 90

**MONEY TO LOAN**  
H. L. MILLER CO. makes any kind of loans. Can finance any amount to \$50,000 loan if necessary. Building loans any amount. 235tf

**MONEY TO LOAN**—Any amounts. Harry W. Chase, 108 N. Brand Blvd.

**MONEY TO LOAN** on improved real estate at 7 per cent, private party. Address Box K, Evening News.

## PROFESSIONAL CARDS

**FRANCIS MARION COLLIER, M. D.**  
EYE, EAR, NOSE AND THROAT  
Glasses Fitted  
Suite 2, No. 125 1/2 N. Brand Blvd., just south of Palace Grand Theatre, Glendale, Cal. Hours: 9 a. m. to 12 m. and by appointment. Phone Gl 1128.

**DR. MARLENEE**  
Optometrist—Optician  
RELIABILITY—QUALITY—SERVICE  
20 YEARS A SPECIALIST  
Own Complete Grinding Plant  
Phone for appointment—Office 2116-J  
Res. 39-J  
104 E. BROADWAY, GLENDALE, CAL.

**Dr. Frank N. Arnold**  
DENTIST  
Flower Block, over Glendale Savings Bank, Brand and Broadway.  
Hours—9-12; 1:30-5  
PHONE 458

**A. A. MacIntyre, D.D.S., L.D.S.**  
Graduate of University of Pennsylvania Post-graduate Finnan School of Prosthodontics, Atlanta, Georgia, Haskell School of Prosthetic Dentistry, Chicago, Licentiate of Dental Surgery, Toronto, Canada.  
Dentistry in all its branches, specializing in Electro-Therapeutic treatment of Pyorrhea by Ultra-Violet Ray etc. Prices reasonable Office at 306 N. Central. Phone 1480.

**DR. J. P. LUCCOCK**  
DENTIST  
Hours: 9 to 12 and 1 to 5  
Phone Glendale 455  
620 East Broadway, Glendale, Calif.

**J. K. GILKERSON**  
**CHIROPRACTOR**  
CITY OFFICE  
1117 VAN NUYS BLDG.  
Phone 65664. Local, Gl. 1997-J

**Glendale Clinical Laboratories**  
Laboratory Diagnostician  
**DR. A. GOFF**  
Associated with  
**DR. T. C. YOUNG**  
620 E. Broadway Sunset Gl. 348

**C. K. ASTON**  
Practical Painting and Paperhanging  
Furniture and Piano Finishing  
631 N. Central Ave.  
Glendale, Cal.  
Phone Glendale 780-W

**WANTED**  
FURNITURE AND RUGS  
Will consider single piece or complete home and pay cash; wish to deal with private owner only. Box 74, Evening News.

**CARS RENTED**  
With or Without Driver  
To Responsible Parties  
**Broadway Garage**  
721 E. Broadway Glendale 2333-J

**ELSA BREIDT**  
PIANO INSTRUCTION  
Wednesdays and Saturdays at home, 118 E. Chestnut St. Tuesdays and Fridays at Studio, Room 336, Blanchard Hall.

**GLENDALE COMMERCIAL SCHOOL**  
Thorough Stenographic,  
Bookkeeping, and  
Special Courses  
Glendale 85 219 1/2 E. Broadway

**Order Your Markers and Monuments**  
from the  
**GLENDALE MONUMENT WORKS**  
Near Forest Lawn Cemetery  
1411 San Fernando Blvd.  
**HARRY J. REINHARD, Prop.**  
Phone Glendale 1246; Res. 742-W

**Morgan Bros. Transfer**  
Formerly  
**JESSE'S EXPRESS**  
Glendale 75 109 B E. Broadway

**Glendale Sheet Metal Works**  
"Everything in Sheet Metal"  
Phone Glendale 1422-J  
127 N. Glendale Ave. Glendale, Cal.

**When you want it done right bring it to the**  
**Pioneer Welding Co.**  
Expert Welding and  
Radiators Repairing  
Ph. 1918-W 113 W. Harvard

</



## Fire Insurance

We Have 4 A-1 Good Companies

MILLER'S NATIONAL UNION  
UNITED FIREMANS  
NETHERLANDS  
PITTSBURG  
UNDERWRITERS

We have a lady expressly to write them up in first class shape. We make adjustments quickly. We have been in the fire insurance business 23 years and never raised our price. We are writing one hundred thousand a month. Remember your house will stand 1-3 more insurance now than it would 1 year ago. Protect your family.

**H. L. Miller Co.**

109 S. Brand Glen. 853

## Palace Grand

### TONIGHT

Popular Request Day  
NAZIMOVA  
in a powerful production of the West Indies  
**"STRONGER THAN DEATH"**  
OTHER ATTRACTIONS

### TOMORROW

WILL ROGERS  
in  
**The Strange Boarder**  
HAROLD LLOYD  
in  
**His Royal Slyness**  
Also Cartoons and Pictographs

Two Evening Shows, 6:45, 8:45  
MATINEE EVERY DAY—2:30

## Fanset

**DYE WORKS** None Better  
Cleaners and Dyers  
110 East Broadway  
Phone Glendale 155, Main 5

### WE KNOW HOW AND DO IT

Glendale Carpet and Mattress Renovating Works  
1419 S. San Fernando Road, Glendale  
Old mattresses made like new. Rugs cleaned and sized. Fluff Rugs made from your old carpet, also Rag Rug weaving and rugs dyed. Mattresses for sale.  
PHONE GLENDALE 1928

### Phone Glendale 154

For—  
Tubercular Tested Raw Milk, Pasteurized Milk and Cream, Fresh Buttermilk, Cottage Cheese and Butter, Delivered Fresh Morning and Evening.

**Glendale Creamery Co.**  
755 West Doran Street  
Established 1907

Repairing Storage  
**Vorwerk & Vickers**  
Garage  
Open From 7 a.m. to 11 p.m.  
137 N. Maryland Glendale

Wm. Prendeville Jos. Prendeville  
Phone 417 Phone 416-J  
**PRENDEVILLE BROTHERS**  
Plastering Contractors  
Exterior Work and Patching  
A Specialty  
335 Patterson Ave., Glendale, Cal.

**Hand Painted China**  
We have a very pretty selection now on display. We do China Firing  
**The Furbeck Art Studio**  
215 South Brand

**GLENDALE SHAMPOO PARLORS**  
Misses Goold and Cartwright, Proprietors  
Marinello Toilet Preparations  
Hair Work a Specialty. Appointments  
Phone Glendale 670  
103-A N. Brand, Rudy Bld., Glendale

**BRICKWORK**  
and  
**MANTLES**  
Call  
**J. F. KLANN**  
Glendale 766-J

## Personals

H. V. Adams is to erect a garage for a temporary residence at 434 West California avenue.

B. R. Mathiesen and wife, who sold their home at 235 South Cedar, have moved to Salt Lake City.

William Casselman, who has been seriously ill for some weeks, is now able to be out for a short time each day.

Capt. J. A. Neel of 302 North Louise has taken out a permit for the erection of a playhouse for the children of the family, to cost \$200.

C. W. Douthat informs the Evening News that he has leased his home at 609 North Louise, through the agency of a small ad in the Evening News, for four months, and he and Mrs. Douthat will live in Ocean Park during that period. His tenant is C. E. Masopust, salesman for the Valley Automotive Co. of San Fernando, who is soon to be married.

R. J. Gleason and wife moved to Glendale a few days ago from Santa Monica, having bought the B. R. Mathiesen place at 235 South Cedar. Mr. Gleason is a carpenter, plasterer and cement worker and is finding plenty of work to do. Mrs. Gleason's brother, H. H. Wheeler, bought the adjoining Mathiesen property, 830 Orange Grove avenue, and moved into it, renting his residence property at 506 East Maple.

F. G. Taylor and wife and their little nephew moved last week into the Cram property at 325 Fairview which they had purchased a few weeks before. They had been living in Los Angeles but much preferred Glendale, and are delighted to have secured such a beautiful home in so choice a location. Mr. Taylor is with the Salt Lake Railway office in Los Angeles. He is rejoiced that his parents have written that they are coming to Glendale from the Toledo, Ohio, home soon and is looking for a location for them. Mrs. Taylor hopes that her parents, who live in Mansfield, Ohio, will decide to come out before next winter, also.

Mrs. J. A. Endicott of 308 North Central avenue is having great pleasure in the entertainment of her sister, Mrs. G. G. Seymour, and son, from Oakland, who came to Glendale when her husband was called to the Atlantic coast on business the first of May. Mr. Seymour is returning from New York Sunday and will be met by his wife at San Bernardino. After spending a few days here he will go on to Oakland and Mrs. Seymour and her son will remain for the month of May. Mrs. Endicott has already taken her on several delightful auto trips and more are being planned. She also expects to entertain Mrs. Seymour for a week at Venice. Mrs. Seymour is the daughter of Mr. and Mrs. J. Krachy of 806 South Maryland and will devote part of her time to them and her brothers and sisters, and her many friends here and in Los Angeles where she has a large acquaintance.

**INTERESTING EXPERIMENT**  
A distinguished scientist has received an after-image artificially by means of the following experiment: After remaining in darkness for some minutes, he flashed a light on to his hand. He then went to bed in total darkness and slept through the night. Before opening his eyes in the morning he again flashed a light, but this time on his eyes. By this means he revived the after-image of his hand in front of him, although he had not seen it since the previous night. —San Francisco Chronicle.

**MORE OR LESS?**  
Hickop had decided to turn over a new leaf, and he couldn't help letting everybody know. "I have resolved for the New Year," he said, feeling if his halo was on straight, "that I shall not drink any more." "But, my dear fellow," protested a Doubting Thomas, "you couldn't drink any more. The point is have you resolved to drink any less?" —London Answers.

**PERFECTLY SAFE**  
A well-dressed and charming young lady hailed a four-wheeler, since there was no taxi in sight. Just as she was getting in she noticed that the horse seemed inclined to be frisky. He was jumping about and swishing his tail in a way that alarmed her—she was a timid little thing. So she addressed a few words to the aged jehu.  
"I hope," she said, smiling bravely, "that you will not run away with me."  
The cabman sighed mournfully.  
"No, mum," he replied. "I have a wife and seven kids at home already."

"Madam," announced the new maid, "your husband is lying unconscious in the reception hall, with a large box beside him and crushing a paper in his hand."  
"Oh," cried her mistress in ecstasy, "my new hat has come!" —Houston Post.

Although he fired on an Italian naval vessel, the end of D'Annunzio appears to be not yet in sight.

## THE GREAT PUSH IS ON

(Continued from Page 1)  
eligible to take active benefit of the Legion campaign. The organization now has enrolled more than a million and a half former service men and women, leaving some three million who can belong but who do not.

The "push," then, is aimed directly at this minority. All of the combined efforts of the million and a half of their fellows will be devoted to bringing the absent into the fold. Which means that every legionnaire will have to take on and convince two comrades.

Only about one man in twenty is eligible to join The Legion. It is perfectly safe to say that hundreds of thousands of loyal Americans would give a good deal if they were eligible, by reason of active army, navy or marine corps service, to come into The Legion. But they cannot, and it is only the three million who are privileged to take advantage of the "push."

But The Legion has no intention of passing up the general public, simply because it is not asking anything from the public. The Legion keenly desires to interest every American in its "push" because it believes it is to every American's interest to be interested, which is not as ambiguous as it sounds.

While only one American in twenty may be privileged to come into The Legion, every American must support, in his heart, The Legion's platform, "For God and Country." Leaders in every field of American life have gladly and spontaneously endorsed The Legion's aspirations. It is widely recognized, although less than fifteen months old, as the greatest force for the established order in these United States.

That the general public feels that this is true is shown by the way prominent citizens have come forward to lend their aid. General Pershing has endorsed the campaign and urged eligible army men to join The Legion. Lieut.-Gen. Robert Lee Eullard, commanding the Department of the East, has included the same recognition in general orders.

Various welfare and civic organizations have endorsed the "push" and have volunteered to lend speakers and equipment to help make it a success. So the general public shows that it refuses to stay out. If a citizen cannot come in himself he intends to do his part to see that the eligible men do come in.

The Legion intends making special efforts to capture those men—and there are hundreds of thousands of them—who have every facility for joining a post, but who are the victims of inertia. These men—and women—know they are eligible to become legionnaires; they approve The Legion's principles; they have always intended coming in, but they have simply put off doing so for the same reason of inertia that keeps men from taking out enough insurance or making their wills.

They belong in, and they know it. Efforts also will be made to get army, navy and marine corps men who are eligible.

The nation-wide "push" is expected to reach men in the most inaccessible places. Any fifteen ex-service men can form their own post by getting together and applying to national headquarters for application blanks. It is believed that no locality is so thinly settled that it cannot scare up fifteen former fighters, who can band together for social and Legion purposes.

Incidentally, the campaign will reach into the far corners of the earth. Already The Legion has posts in fourteen foreign countries, and these outposts of Americanism are expected to join in the "push" and extend The Legion's frontiers.

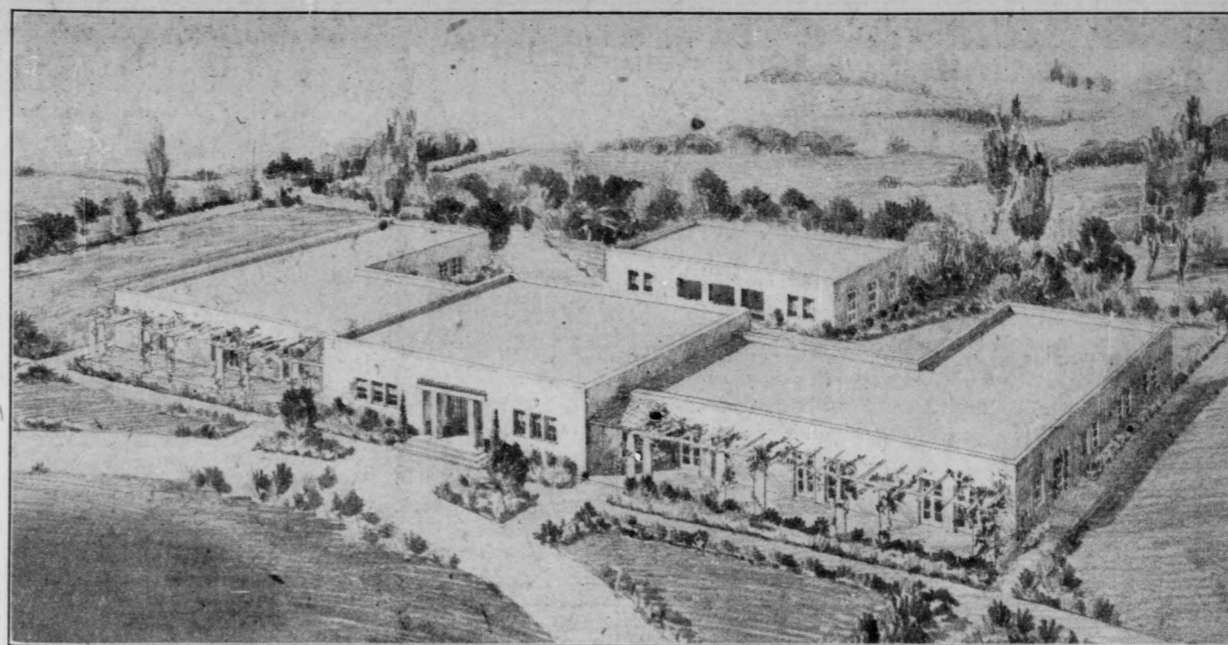
### GAIETY OUT OF PLACE

A bulletin issued in the interest of foreign travel assures prospective tourists that the season abroad will be one of "exceptional gaiety." The setting of the stage abroad would seem to be not thus arranged. Unquestionably every facility for travel across the Atlantic will be made use of this summer. There will be those going abroad on business who will not be drawn by any promise of gaiety, and gaiety will not prove attractive to the many who will go because some near relative lies under the sod "somewhere in France."

Europe possesses an interest additional, to what it has hitherto held but just at the present time it would not seem to invite as a place to cause one to forget care and revel in the lighter phases of life. The sound of the guns has ceased, but the problems requiring solution have multiplied because the war is ended.

Naturally tourists would wish to look over the battle scenes in some measure and we imagine it would be a shallow mind that could detect any gaiety in that region. There may be a resurgence of hope manifested among the people who have returned to the devastated regions, but hardly light-heartedness. There may be an element in Europe that indulges in gay pastimes, yet under the conditions frivolity as implied in gaiety would seem sadly ill-timed.

There is much to interest abroad but such will certainly interest more powerfully those of serious minds than those seeking pleasure only. Europe will be helped by the presence of American tourists, for what



## GLENDALE'S NEW RESEARCH HOSPITAL

This is a non-sectarian institution. It is being promoted in the interest of every citizen and property-owner in Glendale and by this arrangement everyone is invited to participate in its ownership and management. This is all common stock, \$100 per share. You pay 10 per cent with your subscription and the remainder in monthly or quarterly payments extending over a period of one year from June 1st. We all share equally in the returns.

Your early subscription will enable us to begin building early in June and rush it to an early completion.

Leave your subscription at the office of Chas. W. Kent & Son, 131 South Brand, or telephone Glendale 408.

GLENDALE RESEARCH HOSPITAL OFFICERS AND DIRECTORS  
SPENCER ROBINSON, HERMAN NELSON, ROY L. KENT, A. L. BAIRD, DR. J. A. M'NAUGHTON

## INDEPENDENT ICE CO.

Ice on Platform or Delivered.  
Courteous Treatment.  
OFFICE  
106 East California St.  
Phone Glendale 217

## Wildman Transfer Co.

CALL THE  
STORAGE  
Office 120 E. Laurel Street  
For Prompt, Efficient Service and  
Right Prices  
Phone Glendale 262-W

the latter will expend will aid greatly in re-establishing the finances of the countries, but it is greatly to be doubted whether tourists will be greeted with a holiday air of jollity. The shadow cast by the war may be disappearing, but its effect in some degree is still manifest. As appealing as would be a tour of Europe at this time we imagine it would be far from a gay Europe one would look on.

## CANNING PROSPECT BAD

If the present prohibitive prices of sugar continue into the canning season the effect both on growers of fruit and also on the stocks of canned fruit usually placed on the pantry shelves for winter consumption will be disastrous probably. The grower of fruit will suffer because there will be no demand for his product except for immediate use, while the consumer will not be able to avail himself of even low priced fruit for preserving, if sugar is too high or too scarce to warrant its use. Thus the sugar situation promises to work against both producer and consumer.

Already the effect of sugar scarcity has been felt, the prices of acid-bearing fruits have ruled low for some time because the demand was affected by the scarcity and high price of the sweetening essential to make them palatable. If fruits and vegetables are not preserved and the cellar shelves remain empty, the prospect of lowered cost of living when next the snow flies is not bright. If the public were convinced that any sound economic reason were at the foundation of the sugar situation it might be regarded philosophically.

There are those still who believe idleness is a means to increased income.

SAMUEL GOLDWYN  
presents

# WILL ROGERS

in  
**The Strange Boarder**  
By WILL PAYNE  
Directed by CLARENCE BADGER

## The Most Humorous and True to Life Picture You Have Ever Seen

This picture has made a big hit wherever it has been shown  
You will have a chance to see it at the

# Palace Grand Theatre

## SATURDAY, MAY 15

There will also be one of HAROLD LLOYD'S two-reel Comedy Screams, "HIS ROYAL SLYNESS," that is worth the price of admission

Bring the Whole Family, Saturday—It's Going to be  
—Some Show—

Matinee 2:30 Two Evening Shows, 6:45, 8:45



**Baking Tests Made Daily**



**Best Grade Flour**

These tests are made to assure you the uniformity that makes your baking a success.



**HALF ACRE ENOUGH**

MR. AND MRS. W. M. ROSS PROVE THAT LIVING CAN BE MADE ON IT

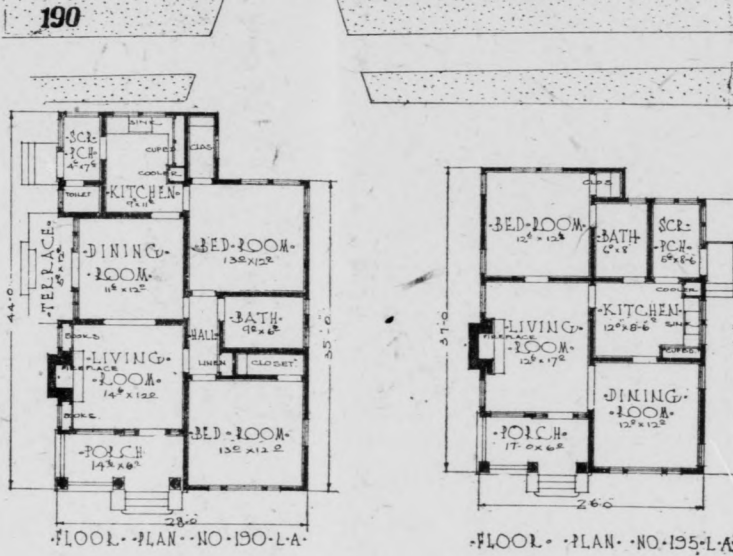
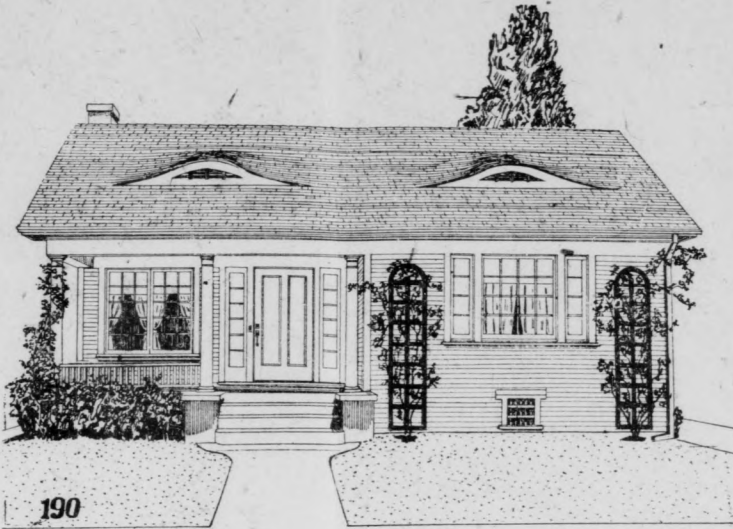
An interesting hour can be spent on the half acre at 900 East Colorado known as the Red Wing Ranch, where Mr. and Mrs. Walter M. Ross have their home and on which they made a good living for several years. When they came out to Glendale 10 or 12 years ago they were told this could not be done, but, undaunted, they set vigorously to work and soon proved the contrary. It was done mostly with pigeons and chickens and methods of care and rearing were used which many successful raisers condemn, yet which turned out for the best. In the last two years the flocks of both kinds of birds have been cut down to less than a sixth of their former strength, as Mrs. Ross now goes it alone in this industry, her husband having accepted a traveling job to help out in the labor famine. In former days as many as 3500 pigeons were kept and several hundred fowls. Feed was very much cheaper then and eggs a very fair price, so there was a good living in the flocks kept by Mr. and Mrs. Ross.

Mrs. Ross now has 500 pigeons, all Carneau and of varied colors, except one loft which is of the Maille de Ceaux breed, a French variety now almost extinct. Mrs. Ross says. Her pigeon lofts are all roofless and the only shelter the inmates have is that of the nest boxes, yet she says she never loses any from colds. It is the same with her chickens. Contrary to the almost universal rule, she will not have a closed house, but all are open in front and on the sides, with only the scantiest roof over them. Yet all are healthy and strong. She takes the most pride in her Silver Hamburgs, black fowls with silver tips to their feathers. Goats are also raised, only a few, however. There is a small selection of fruit trees, peaches, pears, etc., on the place, and four Avocado trees of different varieties, giving her of the fruit continually. She is experimenting also with thornless blackberries, having two varieties, Corey's and Burbank's. Mrs. Ross practices intensive cultivation. She has a strawberry bed 4x8 feet, which she expects will supply her and Mr. Ross with all the berries they need all the year around, for the plants are of the ever-bearing variety and are most carefully irrigated, fertilized and cultivated. Last year she tried out a single hill of Kentucky Wonder beans, four vines arranged in a circle around a depression the size of an ordinary barrel. After the vines had attained a vigorous growth she filled this depression with water each day and used plenty of liquid fertilizer and continuous cultivation. The result was \$5.00 worth of beans for the season. A six-foot lath to each hill, all tied together at the top, furnished ample vining space.

Mrs. Ross says liquid fertilizer is the best to use and is very easy to prepare. The strength can be regulated by the amount of water used. She advised early use of sulphur sprinkled around the vines to keep away the red spider pest from bean vines.

The Supreme Court has held that news is property. Some of it is, and then some is "improvements thereon."—Manila Bulletin.

**A Convenient, Cozy, Attractive Bungalow Home**



- ¶ Would you like to see it on that vacant lot you own or are going to buy?
- ¶ You can see it there—we will tell you how.
- ¶ If this style of bungalow or these particular plans do not especially appeal to you we have some that will.
- ¶ Our plan book service includes homes and plans to suit the needs of any family. Come in and look it over.
- ¶ You can afford one of these pretty bungalows and this is a good time to build it.
- ¶ There is no dearth of building material in our yards.

**Fox-Woodsum Lumber Co.** 714 E. California —Glendale 10—

**The Glendale Book Store**

**PICTURE FRAMING**

C. H. BOTT, Prop.  
113 S. BRAND BOULEVARD

**ATTENTION THE BROADWAY TAILORING**



118 E. Broadway—Glen. 1046  
Beginning Monday, May 10th, we reduce 15 per cent on all sales of Ladies' and Men's Suits  
We also call for and deliver all work to be cleaned and pressed  
—Pressing By Hand Only—

**Hardwood Floors**  
OLD FLOORS SCRAPED  
Floors Laid, Scraped and Finished  
Estimates Cheerfully Furnished  
**H. R. BOWERS FLOORING CO.**  
112-A E. Broadway, Glendale 1859

—The—  
**Burbank Realty Co.**  
Sees many people that do not come to Glendale, but we can sell them your property.  
105-106 Victory Bldg., Burbank, California  
A Real Estate Company  
Call Burbank 42 or Glen. 950-J  
We Will Call

**AN UNPLEASANT ECHO**

It is unpleasant, to think in charitable terms, that as the beginning is made in the removal of bodies of American heroes of the war from France to the United States, there should be presented what may be interpreted as a cold-blooded attempt to commercialize the blood of heroes. The Apremont forest, in the Meuse-Argonne region, literally soaked with the blood of American soldiers, is reported offered for sale through an advertisement in a Paris newspaper which calls attention to the history of the forest as the scene of bitter combat, supplemented with a suggestion that "numerous historic points can be utilized for tourist purposes." Patriotic Frenchmen no doubt will join patriotic Americans in the hope that there is only one man in France whose indifference to the sacredness of the Argonne forest permits him to forget the cost at which his ownership was preserved.

Indignation of Americans in Paris will be understood by Americans at home to whom every foot of that bloody forest is a shrine. It was there that the American armies gave proof of their mettle, every assurance that any duty assigned the youthful Yankees would be pursued to successful end and with sometimes reckless disregard of the price to be paid. Nor is it surprising that under such circumstances the American Legion organization in Paris purposes the purchase of the forest and to make it a monument to the 40,000 dead Americans at Romagne, nearby. To make a commercial showplace of the resting place of heroic dead or to exploit the ground bathed in their blood is a shock to our sense of decency and confidence in the French ideas of patriotic service.

The election of Senator Underwood as minority leader of the Senate is another bit of Southern domination that Northern Democrats protest.

**Escrow Service**

Among the banking facilities which we extend to our patrons and which is appreciated by those who are buying or selling real estate is our escrow service.

In charge of this department are men who are thoroughly versed in escrow matters and who can advise you of the legal requirements in such proceedings. They will see that your escrow business is handled with all care and dispatch.

For any service which a modern bank can render—make this your banking home.

**Identical Service at Both Banks  
Broadway & Glendale Avenue  
Branch, 104 N. Brand Boulevard**

**BANK OF GLENDALE**

CONSULTING ESTIMATING  
**EDDY & DALEY**  
ENGINEERS and CONTRACTORS  
710 E. Broadway  
Glendale  
Phone Glendale 469  
Grading and Concrete Work of All Kinds  
Surveying—Subdividing  
Hydraulic Engineering

C. O. PULLIAM E. O. KIEFER  
**PULLIAM & KIEFER**  
(Successors to)  
PULLIAM UNDERTAKING CO.  
305 E. Broadway Phone Glendale 201

**Solid Fuel Purchased Now Is Insurance Against Higher Prices**  
which are bound to follow the advance in freight rates and wages.  
—Order now from any dealer—  
**COAL BRIQUETS WOOD**

**Parnells Are Coming**

Two Splendid Entertainers at Chautauqua on Sixth Day



For many years the Parnells, who come to Chautauqua for two programs on the sixth day, have been among the most popular entertainers of the platform, filling an average of two hundred and fifty engagements annually. Both are pianists, readers and impersonators, in addition to being splendid singers, saxophone and cello soloists. With this unusual combination of talents they are enabled to present two programs which for excellence and variety surpass that given by most companies of four or six people. Well indeed may the Parnells be called "the biggest two-people company in the country."  
In the big tent, corner Maryland and Wilson Avenues, SATURDAY MAY 15

**THE GLENDALE SANITARIUM AND HOSPITAL**

GLENDALE, CALIF.

MEDICAL AND SURGICAL  
Pacific Portal to Health  
Battle Creek Methods—Modern Therapeutic Equipment  
Hospital Separate from Main Building  
GRADUATE NURSES  
Both Ladies and Gentlemen



The methods include Hydro-Therapy, Dietetics, Massage, Manual Swedish and Curative Gymnastics, and all forms of electrical appliances, together with a thorough equipment for X-ray work.

**RELIABILITY**

Rome was not built in a day—neither was any reliable business institution.

The House of L. G. Scovern Co. stands on a solid foundation—a principle of reliable service for particular people.

From the very beginning it has been our policy to maintain a high standard in all service rendered—and high standard does not mean high price; but it does mean the highest quality possible at any specified price.

**L. G. SCOVERN CO.**  
UNDERTAKERS

Brand Blvd. at Acacia Ave. Phone Glendale 143



# BROADWAY BAKERY



products when once tried, speak for themselves. We turn out bakery goods of such a character that everything we sell is an advertisement for us.

Doing our best work and using only good ingredients is worth while for satisfaction's sake alone, but a business policy that calls for expansion and permanence demands that we turn out only superior products.

If you are not familiar with our bakery goods, won't you try them? You'll come back again for

- |                  |                      |              |
|------------------|----------------------|--------------|
| <b>Rolls</b>     | <b>Bread</b>         | <b>Cakes</b> |
| <b>Doughnuts</b> | <b>Coffee Cakes</b>  | <b>Pies</b>  |
| <b>Cookies</b>   | <b>French Pastry</b> |              |

—Everything In The Bakery Line—

## The Broadway Bakery

R. LENTZ, Prop.

116 W. Broadway Glendale 701

## Summer Clothes

Fashion decrees that summer togs be donned the first of May.

Are you still wearing your winter suit?

Don't you know that Berman has been making suits for Glendale men for nine years and that he guarantees

*Fit—Style—Quality*

ORDER THAT NEW SUIT TODAY

—FROM—

## S. BERMAN

122 North Brand Blvd.

Glendale 423-W

## SCHOOL INTERESTS

### GLENDALE P.-T. A. FEDERATION CONSIDERS MANY IMPORTANT MATTERS

The regular meeting of the Federation of Parent-Teacher Associations of Glendale was held Wednesday afternoon at the Intermediate School with the president, Mrs. A. A. Barton, in the chair. The meeting opened with a salute to the flag led by Mrs. E. B. Moore. Mrs. J. R. White announced a mass meeting to be held Monday evening to discuss the proposition of another bond issue for grammar school purposes. As chairman of finance she reported returns of \$82.81 from the entertainment given by Mrs. Nanno Woods and pupils as a benefit for the scholarship fund.

A vote was taken on constitutional amendments previously proposed by the parliamentarian, Mrs. Brown, which provided that the president of the High School Board of Trustees and the president of the Grammar School Board of Trustees, also the vice-principal of the Grammar Schools, shall be added to the executive board of the Federation. The vote was unanimously in favor of the amendment.

Mrs. Percy Priaulx, chairman of the nominating committee, presented the following ticket:

Mrs. John Robert White, president.

Mrs. J. I. Wernette, vice-president.

Mrs. Kuehne, recording secretary. Mrs. H. V. Brown, corresponding secretary.

Mrs. Plasterer, treasurer.

Mrs. Kinsey, historian.

Mrs. F. H. Waller, auditor.

Mrs. A. H. Brown, parliamentarian.

No other nominations were made from the floor or otherwise and the ticket was unanimously elected.

Mrs. Barton announced that the June picnic will be held in the Ceritos Avenue School grove June 19th. This will be Saturday so that teachers may attend.

A resolution was adopted by the Federation addressed to Supervisor Dodge asking for a raise in the county tax rate to provide for the payment of larger salaries to the teachers.

Mrs. Barton also announced that the State Convention of the Congress of Mothers and Parent-Teacher Associations will be held from May 18th to 21st at the Bible Institute, Los Angeles. Thursday, she said, would be Glendale Day in compliment to the president, Dr. Jessie Russell, who is a Glendalian. On that day the Madrigal Club of this city will furnish the music on the program and the Glendale Federation will entertain delegates with a reception in the Elks' Club House, this city. She said the Greater Glendale Development Association, Chamber of Commerce, City Council and Elks' Lodge had agreed to do all possible to make the function a success. She also mentioned the fact that the Art Department of Glendale High will provide the place cards used at the luncheon to be given delegates in Los Angeles.

### MACHINES FOR THE HARD WORK

The saying that "necessity is the mother of invention" was never truer than it is today. Heretofore the United States had depended upon Europe for its supply of unskilled labor to do the hard manual work connected with mining, coke-making, ditch-digging, railroad grading and track-laying, and to some extent farming. The first year in which more than a million immigrants were admitted was in 1905, when 1,026,499 arrived. In 1913 and 1914, the two years immediately preceding the war, a total of 2,416,372 arrived. The total for 1915, 1916 and 1917 amounted to only 920,929.

Not only has the supply of unskilled foreign labor fallen much below the average during the last five years, but there have been within this period two developments which have absorbed the domestic supply of both skilled and unskilled labor into virtually new fields. One of these is connected with the automobile industry and the other the moving picture business. The combined effect has been an unprecedented shortage in the supply of labor for what economists classify as essential activities.

Here is where invention is stepping in to relieve the pressing necessities of the public. An advertisement recently appeared in a New York newspaper in which a manufacturing concern claims to have now under construction machines which, if the claims can be made good, will eventually solve the problem of labor scarcity. For example, we are told of one machine which will weigh, fill with the specified product, wrap and label 15,000 boxes a day; machines that will assemble and wrap candies, rolling them into packages at the rate of 25,000 a day; others that will automatically remove a cover from a box, place a product therein, place the cover back, label the cover of the box, fold a circular, place the same around the box and fasten the container securely. Many even more marvelous inventions are reported ready to take the place of human hands and

## It's Not a Question of Using Soap

We all have the habit. It's what kind to use and where to get it. Look at the soap piled up on our counters and stacked on our shelves and you'll say we have a right to the title—

## THE SOAP STORE

IS THERE ANY KIND YOU CAN'T FIND HERE?

**For the Baby or the Woman with a Particularly Tender Skin:**

—Castile, both native and imported

**For Medicinal Purposes:**

—Cuticura  
—Resinol  
—Saxo  
—Synol  
—Tar  
—Sulphur  
—Carbolic

**Your Favorite Toilet and Bath Soap is Here, Too:**

—Jergen's Violet Glycerine  
—Llana Oil and Glycerine  
—Creme Oil  
—Palm Olive  
—Cocoa Olive  
—Peet's Hard Water Castile  
—Mission Olive  
—Peet's Mechanic  
—Oatmeal

**They are cleaning and healing**

**Your Favorite Shampoo and Shaving Soaps**

## ROBERTS & ECHOLS

FIRST NATIONAL BANK BUILDING

Phone Glendale 195

Yes, We Deliver

## There Never Was So Much Building Being Done in Glendale As Now

—and the buildings being erected are not filling the needs of the city.

—If you are thinking of building, why not do it now?

—Far-seeing business men are recognizing the fact that this is the psychological moment to build either for themselves or as a means of investment that will bring them big returns.

**We Are Organized to Carry Out Several Contracts at the Same Time and Have Several Buildings in the Process of Construction Now**

**Talk Over That Building Project With Us**

## CHAS. W. KENT & SON

131 S. Brand Blvd.

Glendale 408

## Verdugo Road Grocery

NEAR WILSON AVENUE  
GLENDALE 405-J

Housewives, you are all willing to get the best things to eat at the lowest possible prices. So get acquainted with the Verdugo Road Grocery Store

The following cut prices hold good

### Saturday and Monday, May 15 and 17

Lard Compound, Eastern Make, Swift & Co., lb.	.....\$ .25
Crisco, 1-lb. Size	..... .33
1½-lb size.....\$ .49	3-lb. size.....\$ .98
6-lb. size.....	1.90
Newmark's Best Coffee, Can, Only	..... .55
Sugar, (Limit 3 lbs.), 3 lbs.	..... .70
Spring Beauty Beans, 3 lbs.	..... .25
Toilet Tissue, 4 large rolls	..... .23
Lenox White Laundry Soap, 6 bars	..... .29
Snowball Tomato Puree, 2½ size, 2 for	..... .27
Fresh Sardines	..... .09
Fresh Sardines, 3 for	..... .25
Carson's Bread, 2 for	..... .25
Salvado Coffee, in bulk, very best quality, reg. 48c value	..... .43
Fresh Lettuce, 5 for	..... .10

Come in and see our specials in fruits and vegetables. We deliver orders of \$1 and over. Our effort is to please you and give you the best service. Thank you

**A. SUSSMAN, Proprietor**

PHONE GLENDALE 405-J

### KOREANS ILLITERATE

TOKIO, April 21.—(By Mail to United Press)—“While the spirit of independence is still very active among the Koreans it is destined to become extinct sooner or later, Baron Saito, Governor-General of Korea declared in an interview here today.

Governor General Saito disclosed that the reason authorities have abandoned plans for a general census of Korea in October is because of

illiteracy among Koreans, over ninety per cent of whom are said to be incapable of filling out enumeration blanks. If the census were carried out it would mean the employment of 50,000 or 60,000 men for the purpose and even then it would be impossible to obtain correct information as the young Koreans invariably are an anti-Japanese tendency.

Since no one can be found on whom the responsibility for high prices can be loaded, they must have originated just like Topsy.

do the work more perfectly and in greater volume, and all without a glance at the clock or a stop to powder its nose or rearrange its back hair.

Perhaps the reason Mars fails to talk with us lies in possession of the knowledge that there is too much talk going on on the earth now.

Possibly the reason Mars does not respond to advances is due to a fear that the earth has had too much of Mars in the last five or six years.

Secretary Meredith of the department of agriculture has decided that it is “milk cow” and not “milch cow.” However, the price is the same whichever is preferred.



LABOR SAVING IN THE HOME

The disinclination of young women to enter domestic service is resulting in surprising suggestions for relieving the overworked American housewife. The latest proposal is that the widows of Europe's war-slain be offered inducements to make their homes in a new land where greater breadth of opportunity and award await. Arrival of a shipload of young women at New York the other day was hailed with joy; it was predicted that most of them would find their way into homes in need of aid. Seldom a day passes without publication of some lament or plan to overcome an unusually distressing situation.

Wonder arises if we have not overlooked, or at least paid too scant attention to, one potential source of relief at which we are adept. The multiplication of labor-saving devices for the housewife may prove in the long run to be more important as a means of solving our so-called servant problem than all the immigrants likely to be admitted for many a day.

Most men would scorn to work with implements as cumbersome and elemental as those with which their mothers toiled long hours. Few men in their offices or shops would put up with inconveniences comparable to those which handicap their wives every day. Only within the past decade has inventive genius been turned energetically toward the production of labor-saving devices for the home. The development is still in its infancy. It is reasonable to expect that within a few years facilities for making housework easy will be so universally available that the servant problem will no longer be a pressing one. With modern appliances, it is becoming more nearly possible for the average housewife to care for her home without fatigue.

In a presidential primary the best scrapper is sometimes scrapped.

Flowers and Trees

can make the humblest abode attractive and home-like.

Lack of them makes the finest home unlovely and detracts from its value.

You can add to the beauty of your home and consequently to its value by planting

Annuals, Perennials, Roses, Shrubs, Fruit Trees, Ornamental Trees, Berries, Vegetables, Etc.

We specialize in cut flowers, funeral pieces and bridal decorations

Glendale Plant and Floral Co.

118 S. Brand Blvd.

Glendale 1030



The Big Broadway Block

Paint for the New House or the old, for the garage, the fence, the automobile — enamels, paints and varnishes for the interior finishing.

Get Them Here!

- |                     |                    |
|---------------------|--------------------|
| Refrigerators       | Incubators         |
| Ice Cream Freezers  | Brooders           |
| Fireless Cookers    | Builders' Hardware |
| Gas Ranges          | Kitchenware        |
| Oil and Gas Heaters | Tools              |
| Electric Washers    | All Kinds Hardware |

Also Blasting Powder, Dynamite, Caps and Fuses

Glendale Hardware Co.

601 E. Broadway

Glendale 490

would collect around the store porches or other places of public gathering during church service.

Some will have doubts whether the Tangier Islanders, sincere as they are, are on the right track. At least they have no imitators in all this land, probably. Certainly the unwilling attendant would not receive benefit in the same degree as one who goes voluntarily because he hopes to be helped by the service. Compulsion has a tendency to breed perversity.

Long ago the plan of converting men to religious belief by the use of force was abandoned because it was discovered that one converted against his will is not likely to be thoroughly converted. Attendance at church is commendable and none should neglect the privilege. Because it is right and also helpful to the individual should be sufficient motive. The cause of religion has won through its pulling power rather than through its driving power.

At Daytona, Fla., an automobilist drove five miles in a trifle over two minutes, breaking the world's record, yet every day we see someone who seems to be going that fast.


Germany is to get another sharp note from the Allies. Since so many sharp notes have been ineffective, why not be blunt with them?

IN DARKEST AMERICA

Tangier Island in Chesapeake Bay has an unique claim to distinction though the claim on which its fame rests has but recently been made generally known by a tragedy that occurred there. Tangier Island law compels attendance at church on Sunday by all those who do not seclude themselves within their homes. In contradistinction from many other old laws which are permitted to remain as dead letters this law has been enforced. Only through an attempted violation has this peculiar community gained public notice.

Non-attendance at religious service is considered a disgrace. Hence it is made a matter of compulsion except to those who remain inside their homes. This remarkable ordinance is said to represent the sincere sentiment of the older folk of the community as a legitimate method of instilling religious principles, though the younger people feel that church attendance should be a matter of opinion.

A young man who refused to go inside his home when requested by an officer to do so, but insisted on remaining on the porch, was perhaps fatally shot as the result of the encounter with the officer. The defenders of the law contend that without it half the congregation



The ideal way of washing delicate things is the way the Eden washes everything.

## Help wanted!

The men of America don't have to do the washing—but if they did, they would be as tired of needless laundry toil as American women are.

# The Eden


substitutes electric-power for man- or woman-power in the home. It substitutes science for backache. It cleans everything—blankets, linens, all clothes—by dipping them up and down through hot suds a countless number of times as gently as a woman dips a bit of lace in a basin.

There's no rubbing with an Eden. It makes everything wear enough longer to much more than save its cost. It saves time, labor, hard work and wages.

### Try an Eden at home free

Ask us for free demonstration without obligation or expense. If you want to buy an Eden after trying one, you can pay for it the same easy time-payment way that Liberty Bonds were bought.

Phone, write or visit us today.



The safety interlocking swinging wringer locks into six positions.

**J. A. NEWTON ELECTRIC COMPANY**  
629-31-33 East Broadway  
Glendale 240-J

A ROAST

of beef, pork, veal or lamb makes an ideal foundation for the Sunday dinner provided it is

QUALITY MEAT

Call Glendale 1230 for a nice roast or some other cut if you prefer it. Our delivery service will get it to you at the proper time.

See us for any kind of Fresh —Salt or Smoked Meats—

Glendale Market

630 E. Broadway

Glendale 1230



## Harmony in Your Home Surroundings

Beautify the walls of your Living Room or Bedroom with an attractive tint of

### W. P. FULLER & CO.'S Washable Wall Finish

The colors are mellow, soft in tone and wear well.

This ideal coating is replacing unsightly and unsanitary Wall Paper.

Washable Wall Finish is ready for use and dries with a hard surface that is easily kept clean.

MADE IN 15 COLORS

70 Years

## W. P. FULLER & CO.

MANUFACTURERS  
Paints, Enamels, Stains, Varnishes,  
Pioneer White Lead

For Sale by Distributors of  
W. P. FULLER & CO.'S Products



### COLLAR BUTTON MINDS

Now it is a movement originating in Chicago against the collar button, and, we read, its promoters have become so earnest in it that they have requested presidential candidates to take a stand on the subject. Not alone is the collar button to be hit, but several styles of shirts. Here is the "clarion" call: Wanted: Ten thousand slaves of the collar button to rise, and not only emancipate themselves from its despotic yoke, but to forswear the white starch collar and the "biled," the silk, the linen, the pongee and all other costly shirts.

Were it not that telegrams have been sent to presidential candidates inviting their support for the movement, the whole thing might be treated as a burlesque on some of the other projects for reducing prices. Carrying it to the point of asking its inclusion in political platforms, however, shows that it is the absorbing thought—the "big idea"—of those proposing the policy. It recalls that in one of the darkest crises of the war a childish delegation visited Washington to protest against the sending of cigarettes to our fighting forces. That was their "biggest idea" of how to help.

So with the collar button minds that would work into platforms expected to deal with the greatest questions ever presented to the race something about shirts and their fastenings. They would see no unfitness in it if an expression of horror at the human toll taken in the world war should be followed by a similar expression against the collar button, or would they have the latter placed first?

There is a time and a place for all things. A time when the people are called upon to contemplate their sacrifices for great principles is not the time for the introduction of trivial matters. Far as our political conventions may fall from their ideals in practice, they are not places for consideration of the collar button joke—let that be submitted to some nursery department. There is enough childishness at best in politics without pestering the candidates with things so palpably babyish as this latest from Chicago.

Thus, while it takes all kinds of people to make a world—and we have them—it remains that whenever childish minds go too far they have to be suppressed. If these Chicago gentlemen cannot settle the collar button question themselves, then it will have to be the hook for them.

### WHAT HAPPENED TO FRANCE

Can you imagine the United States without the grape country of California, the textile-mills of New England, the steel of Pennsylvania, the coal of West Virginia, and the iron of Minnesota? If you add to this list the chemical works of Delaware and the farm lands of Wisconsin, you will have some idea of what the devastated areas meant to France.

In square miles, of course, the ruined land cannot compare with all these States. As a matter of fact, it is a district just about the size of Maryland; but France is a compact land, where cities crowd upon each other and industry is congested.

The devastated region, 6 per cent of all France, furnished 94 per cent of the total wood output of the nation, 90 per cent of the flax, 90 per cent of the iron ore, 83 per cent of the pig iron, 70 per cent of the steel, 70 per cent of the sugar, and 55 per cent of the coal.

During the years of invasion 26,000 factories were stripped of their machinery, 12,000,000 head of cattle seized, and nearly a million farm implements destroyed.—World Outlook.

### MORTIFIED

"What is the matter with your old cat? She looks disconsolate these days." "Pap hurt her feelings dreadfully. Brung home a mouse trap last week. I told him not to do it. Cats has got their feelin's same as anybody else."—Louisville Courier-Journal.

### RIDING TO A FALL

"Sugar is due for another increase in price," we read.

"Clothing will be higher next fall," according to a wholesaler's report.

"Foodstuffs generally higher for the past month," the government announces.

"Labor must have more per day as living costs go up," Samuel Gompers announces.

Everybody's doing it. Price boosting in the air. And all of us are riding for a fall.

Already we have passed the peak of the prices the public is able to pay for some articles. Soon we shall reach the extreme altitude on others. After that will come the reaction, and it is likely to be in the nature of a tumble that will bark the shins of all of us.

But if it brings us to our senses with a sharp bump, perhaps we shall all be the better for it after the smarting is over.

A well-known New York song writer says he is paid only \$25 a week. A lot of folks a bit frayed by jazz will find quiet satisfaction in that.

The New York restaurant that sold liquor at \$1 a drink and added 10 cents to the bill for "war tax" evidently intended to be scrupulously exact in its dealings.

Advertise for it in the News.

# Reduction Sale

We are going to give our patrons the benefit of a fortunate purchase of several dozen pairs of pink bloomers and mercerized lisle hose. This is good merchandise and real bargains at the price we are offering them.

**Pink Bloomers**  
\$1.25 value **85c**

These garments are not defective in any way. They are of good material, cut full with equestrian top—a style much wanted and a real bargain at 85c

**HOSE 85c**  
\$1.25 Value  
**Mercerized Lisle**

These come in black only in sizes from 8½ to 10. They are full-fashioned and of good quality. An exceptionally good value at 85c

## H. S. WEBB & COMPANY

103 S. Brand Blvd.

Glendale 713

## Meat Specials for Saturday

—AT THE—

### Acme Meat Market

OUR MEATS ARE WELL KEPT BY BUTCHERS ADEPT!



What do you think of these prices?

Other Meat equally as Cheap

Boiling Beef	15c
Pot Roast	18c-20c
Home Made Pork Sausage	30c
HOME MADE PORK SAUSAGE	30c
Pork Shoulder Roast	28c
Legs Spring Lamb	38c
Sugar Cured Corned Beef, Boneless Rump	28c
Fresh Fish Received Direct from Ocean Daily	
2½ Per Cent Discount On Cash Coupons	

HURD & BERRY, Props.

We lagged over two years in getting into the war. There is a possibility that we are going to beat that record in getting out.

YOU CAN BUY A

Clark Jewel

or

Domestic Range

For Less Money

AT THE

Southern California Gas Company

112 WEST BROADWAY  
GLENDALE 714

# BANK OF GLENDALE

GLENDALE, CAL.

Statement of Condition at Close of Business May 5, 1920  
Commercial and Savings

RESOURCES	
Loans and Discounts	\$ 822,585.99
Overdrafts	1,930.57
Bonds and Securities	128,166.65
Bank Premises, Furniture and Fixtures	17,882.90
Other Real Estate	7,796.20
Cash and Due from Banks	234,253.46
Due from Customers for U. S. Liberty Bonds	1,925.00
	\$ 1,215,540.77

LIABILITIES	
Capital Stock	\$ 75,000.00
Surplus	4,690.00
Undivided Profits	4,847.47
Deposits	1,131,093.30
	\$ 1,215,540.77

DEPOSITS	
December 31, 1910	\$ 162,314.08
December 31, 1915	220,894.80
December 31, 1916	283,669.91
December 31, 1917	307,242.52
December 31, 1918	378,501.66
December 31, 1919	753,031.34
May 5, 1920	\$ 1,131,093.30

We respectfully call your attention to the above statement. We are proud of it, and feel grateful to our many friends who have made it possible.

### Officers and Directors

F. H. Vesper.....President  
C. M. Walton.....Vice-President  
A. Dana Burkett.....Asst. Cashier  
D. H. Smith.....Vice President  
Herman Nelson.....Cashier  
Verne A. Nyman.....Asst. Cashier  
W. E. Hewitt  
A. W. Beach  
Thos. F. Cooke

Under Supervision of State Banking Department, Affiliated With and Examined by Los Angeles Clearing House

## ANNOUNCEMENT

The Glendale Sanitarium and Hospital take pleasure in announcing that their dining room is now conducted on the European plan and is open to the public, especially to those who appreciate a good, clean, wholesome, vegetarian diet at very moderate prices.

Special Sunday Dinner Every Sunday

TABLES MAY BE RESERVED

Breakfast, 8:00 to 9:00 a. m.  
Dinner, 1:00 to 2:00 p. m.  
Supper, 6:00 to 7:00 p. m.

## MISSION PLAY

SAN GABRIEL

# CLOSING SOON

BETTER SEE IT NOW

## Pacific Electric

## BABY CHICK SEASON

Are you equipped to take good care of your Baby Chicks? We have a well assorted stock of Feeders and Drinking Fountains. Also Pratt's, Coulson's, Globe A-1 and Besgrade Chick Feeds.

LET US FILL YOUR ORDER

Glendale Feed and Fuel Co.  
PHONE GLEN. 258-J. 106 S. GLENDAL AVE.



# KILLS ALL

roses, scale, etc. Get after them NOW. We are the Glendale agents.

This is a preparation recommended by Howard & Smith, a sure shot for the red ant, mealy bug, aphid, thrip, mildew on

**Have you visited the Poultry and Pet Stock Exchange Lately?**

We have the finest canaries ever shown in Southern California, and lots of them, at prices away down.

**BUFF LEGHORNS**—Some splendid thoroughbred Buffs that will sell on sight.

**PUPPIES**—We have a number of fine puppies. Come early before they are all picked over.

**RABBITS**—All breeds. We have too many and have marked them down as this week's special. The cheapest meat you can raise. Come early for the pick of them.

**CLOSING OUT AT COST, INCUBATORS** and numerous other articles. Come in once and you get the habit.

**HOW ABOUT THE GOPHERS?** We have the stuff that will send them kiting. Let us explain it to you.

**BABY CHICKS, ALL BREEDS**—The finest to be had and plenty of them. Also ducklings, goslings and young turkeys. Mother hens with chicks one of our specialties.

**WHITE LEGHORNS**—These are fine ones, all laying, that will Hoganize right.

**ANCONAS**—A big pen of yearling hens that are hard to beat, color the kind that show judges like, and they are all laying.

**CATS**—We carry a full line of cat remedies—catnip mice, catnip balls, etc.

**Last but not least**, we have a splendid line of powders, liquid lice and mite destroyers, sprayers and everything needed for the pets' comfort.

Save money—we sell for less.

## Poultry and Pet Stock Exchange

Telephone Glendale 392

142 North Brand Boulevard

**ORDINANCE NO. 379**

AN ORDINANCE OF THE BOARD OF TRUSTEES OF THE CITY OF GLENDALE GIVING AND GRANTING TO STANDARD OIL COMPANY PERMISSION TO CROSS WITH A SPUR TRACK A CERTAIN STREET IN SAID CITY OF GLENDALE.

THE BOARD OF TRUSTEES OF THE CITY OF GLENDALE DO ORDAIN AS FOLLOWS:

Section 1. That permission is hereby given and granted to said Standard Oil Company to cross San Fernando Road in said City of Glendale with a spur track, so that track facilities can reach those certain pieces or parcels of land situate in said City of Glendale, County of Los Angeles, State of California, and described as follows:

A tract of land of one and one-half acres, situated on the northeast corner of Colorado Street and San Fernando Road, having a frontage of 165 feet on Colorado Street and 335 feet on San Fernando Road with a depth of 308 feet on Colorado Street; provided that said spur track shall cross said street at a point described as follows:

Beginning at a point on the westerly line of San Fernando Road 406' more or less, northerly along said westerly line from the point of intersection of said line and the northerly

line of Colorado Street, produced; thence southerly and easterly on a 16° curve across San Fernando Road to a point on the easterly line of San Fernando Road 358' more or less, measured along said easterly line, from the intersection of the northerly line of Colorado Street, and the easterly line of San Fernando Road both produced.

That the terms and conditions upon which said permission is given and granted are the following:

That said spur track shall be laid, constructed and maintained in all respects under the supervision and to the satisfaction of the Superintendent of Streets.

That said grantee shall at its own cost and expense, oil or macadamize the said street between the rails of said track and for two (2) feet on each side of said track with the same material and in the same manner and under the same specifications as other portions of said street are now or may hereafter be improved, and shall also at such times as future street improvements are made, simultaneously improve said streets between the rails of said spur track and for a distance of two feet on each side thereof in the same manner and under the same specifications as the balance of said street is improved, and shall keep the same constantly so oiled or macadamized and in repair, flush with the street and shall make the road bed conform at all times to the

established grade of said street.

That said grantee shall construct all necessary cement culverts and conduits for the free passage of water under said spur track wherever and whenever necessary, and that all such cement culverts and conduits shall be constructed at the points designated by and in accordance with the plans and specifications approved by said Board of Trustees.

That the cars upon said spur track shall not be allowed to stand in such street in such a manner as to obstruct the use of said street by vehicles or pedestrians.

That the work of constructing said spur track shall be completed within not more than one year from the date upon which this Ordinance becomes effective and that if said work be not so completed within the time or in the manner aforesaid, said Company shall forfeit all rights hereunder.

That any neglect, failure or refusal of said Company, its successors or assigns to comply with any of the terms and conditions hereof, shall thereupon immediately ipso facto effect a forfeiture of all rights hereunder and said City by its Board of Trustees may thereupon declare such rights forfeited and may exclude said Company, its successors or assigns from further use of said street under this Ordinance, and said Company or its successors or assigns shall thereupon immediately surrender all rights in

and to the same, and all rights granted hereunder shall become and remain null and void.

Said City of Glendale hereby expressly reserves the right to oil, pave, macadamize, sewer or renew any of said street or to lay gas, water or other pipes or conduits therein, said work to be done so as to injure said spur track as little as possible.

Section 2. That Ordinance No. 375, entitled "An Ordinance of the Board of Trustees of the City of Glendale, giving and granting to Standard Oil Company permission to cross with a spur track a certain street in said City of Glendale," adopted the 18th day of March, 1920, be, and the same is, hereby repealed.

Section 3. The City Clerk shall certify to the passage of this Ordinance, and shall cause the same to be published once in the Glendale Sentinel-Progress, a newspaper published and circulated in said City of Glendale and hereby designated for that purpose, after the expiration of 30 days from the final passage of this Ordinance, the same shall take effect and be in force.

Adopted this 13th day of May, 1920.

HARTLEY SHAW,  
President of the Board of Trustees of the City of Glendale.

Attest:  
J. C. SHERER,  
City Clerk of the City of Glendale.

STATE OF CALIFORNIA, )  
COUNTY OF LOS ANGELES, ) S.S.  
CITY OF GLENDALE )

I, J. C. SHERER, City Clerk of the City of Glendale, do hereby certify that the foregoing Ordinance was duly adopted by the Board of Trustees of the City of Glendale, State of California, and signed by the President of the said Board at a regular meeting thereof, held the 13th day of May, 1920, by the following vote, to-wit:

Ayes: Bartlett, Henry, Robinson, Shaw, Stevenson.  
Noes: None.  
Absent: None.

J. C. SHERER,  
City Clerk of the City of Glendale.

**NOTICE OF ASSESSMENT**

VALLEY WATER COMPANY, a corporation, its principal place of business being located at La Canada, County of Los Angeles, State of California, (postoffice address of said corporation being R. F. D. No. 13, Box 49, Los Angeles, California).

NOTICE IS HEREBY GIVEN that at a meeting of the board of directors held on the 13th day of May 1920, an assessment of fifty cents (50c) per share was levied upon the capital stock of the corporation, payable May 17th, 1920, to E. A. Brigham, treasurer of Valley Water Company at the office of said corporation, to-wit, at the residence of F. D. Lanterman, La Canada, County of Los Angeles, California, (the postoffice address of said corporation being R. F. D. No. 13, Box 49, Los Angeles, California). Any stock upon which this assessment shall remain unpaid on the 14th day of June, 1920, will be delinquent and advertised for sale at public auction, and unless payment is made before, will be sold on the 1st day of July, 1920, to pay the delinquent assessment, together with costs of advertising and expenses of sale.

F. D. LANTERMAN,  
Secretary of Valley Water Company, R. F. D. No. 13, Box 49, Los Angeles, California.

**ENGLAND RETAINS THE POUND**

While the Dominion of Canada is using, with satisfaction, the decimal system of money, with the dollar as the unit, like the United States, Great Britain has decided not to change from pounds, shillings and pence. There were two proposals before a commission, one to make the present half penny the basic unit of British currency and create a new coin—the Royal—of the value of 100 half pence. This would have displaced the pound. The other scheme was to retain the pound and create new fractional coinage, the lowest unit of which—one "mil"—would be the one-thousandth part of one pound.

The commission considered it most unwise to drop the pound from English currency and this was the chief objection to the half penny

and "Royal" coinage system. On the other hand, the pound and "mil" system would not, in practice, provide coins equivalent in value to one penny, sixpence or one shilling. This was a fatal defect, in the opinion of the commission, which held that "a large part, including the least instructed portion of the community, reckons its income in terms of shillings and pence."

At twenty you left the farm and came to the city. And for thirty years you have been working like mad. What for? In order to get money enough to live in the country.—New York Evening Sun.

### Specials for Saturday

—at the—

## Basket Grocery

Tel. 761-J

108 E. Bdwy.

**ORDERS OF \$2 AND OVER  
— DELIVERED FREE! —**

Good Brooms .....	65c
Bishop's Bulk Cocoa, lb .....	30c
Bishop's Unsweetened Chocolate, lb .....	43c
Special Blend Coffee, lb .....	35c
Armour's No. 2 Can Pork and Beans, 2 for .....	25c
Krumbles, 2 for .....	25c
Post Toasties, 2 for .....	25c
Beets, No. 2 can .....	10c
Deviled Meat, per can .....	05c
Bishop's Apple or Peanut Butter, lb .....	25c
Reliable Matches, 12 boxes .....	50c
White Navy Soap, 4 bars .....	25c
Wash E-Z-Y Soap, 4 bars .....	24c
Scratch Feed, 5 lb .....	25c

### White Star Market

108 E. Broadway

#### Our Saturday Specials

that are QUALITY and prices that suit every good shopper. Remember our service, combined with our large buying scale enables us to offer these unheard of prices:

Genuine Lamb Legs .....	35c
Lamb Shoulder, whole .....	27c
Smoked Picnics, (beauties) .....	28c
Lamb Shoulder Chops .....	35c
Choice Steer Pot Roast .....	15c-18c
Fancy Boiling Beef .....	12 1/2c
Try our Home Cured Corned Beef at .....	24c
2 lb Compound .....	45c
Pure Lard .....	30c

Come in early and select your favorite cut, have it laid away and get it later. Quality Our Motto

Phone 761-J

**C. CASWELL, Prop.**

# SHAVER'S

FOR

# SATURDAY

YOUNG TELEPHONE PEAS, lb .....	9c
GREEN KENTUCKY WONDER BEANS, lb .....	15c
CARROTS, TURNIPS AND BEETS, BUNCH .....	4c
GREEN ASPARAGUS, lb .....	15c
NEW POTATOES, lb .....	10c
BULK MACARONI, 2 POUNDS .....	25c
BULK SPAGHETTI, 2 POUNDS .....	25c
MATCHES, BOX .....	5c
WHITE NAVY BEANS, 3 POUNDS .....	25c
PINK BEANS, 3 POUNDS .....	25c
WHITE LAUNDRY SOAP, BAR .....	5c

## Shaver Grocery Co.

(INCORPORATED)

H. G. MAC BAIN, President

BROADWAY AND GLENDALE AVE. PHONE SUNSET 136

We Deliver all Orders of 50 Cents or Over

### BUY Independent Ice

Hard as marble, clear and nice. We are holding down the price.

We've no excess ice to pay No cold storage to defray Just a reasonable dray And will SERVE you right away

PHONE GLENDALE 217

Advertise it, or advertise for it in the Evening News.