

## Historic, archived document

Do not assume content reflects current scientific knowledge, policies, or practices.



62.731

LIBRARY  
RECEIVED  
★ JAN 6 1931 ★  
U. S. Department of Agriculture.



DIRECTOR RUBIO

One of 12 Important New Roses  
Introduced in U. S. A. by The Conard-Pyle Co.  
*(See next page)*



SPRING 1931  
*Wholesale Price-List*



New Roses  
Lining Out Stock  
Shrubs...Vines...Evergreens

The Conard-Pyle Co.

ROBERT PYLE, *President*  
WEST GROVE, PA., U. S. A.  
*Nurserymen since 1897*

NEW ★ ROSES

*The Sparkling Dozen*

12 Novelties of Distinction...\$17.50

All 12 introduced in U. S. A. by THE CONARD-PYLE COMPANY. Ten times as many were imported, carefully tested in our trial grounds and personally observed both here and in Europe and finally (not all at once) these 12 were selected as of *outstanding excellence*.

Here's an unusual chance to get acquainted and to show your customers fine Roses while yet new. You can book high-profit orders from one or two sets of these *in your Show Grounds*.

[[ For detailed descriptions and illustrations (many in natural color) consult Retail Catalog. Copies free. ]]

No. 1 dormant 2-year field plants on Multiflora

(Grown in Southeastern Pennsylvania)

1. **Ami Quinard.** HT. Red. \$3.50 each

Vastly superior to HAWLMARK CRIMSON because of finer texture and depth of crimson-maroon color. Introduced by us Fall, 1930.

2. **Director Rubio.** HT. Pink. \$2 each, 10 for \$19

(*Cut front cover*). Outshines every other brilliant pink for it holds its color long, rain or shine. Twin of the now popular MARI DOT.

3. **Joyous Cavalier.** HT. Red. \$1.15 each, 10 for \$11

"Made" for bright group plantings, this "joyous" new crimson-red does not blue and blooms continuously. Bush almost shrub-like.

4. **Kardinal Piff.** HT. Tinted. \$1.00 each, 10 for \$9

Orange-pink winner of BAGATELLE GOLD MEDAL, 1926. A very active bloomer with fruity fragrance and well arranged double flowers.

5. **Li Bures.** HT. Tinted. \$1.00 each, 10 for \$9

Multi-colored Spanish novelty, first maroon, then lightened with orange and yellow. Distinctly fragrant. Holly-like foliage.

(Continued on Next Page)

# WHOLESALE PRICE-LIST

SPRING, 1931

## NEW ★ ROSES

### *The Sparkling Dozen*

Continued

12 Novelties of Distinction... \$17.50

6. **Mari Dot.** HT. Tinted. \$1.15 each, 10 for \$11  
An entirely new color—deep apricot darkened with orange. Perfume with a sweetness all its own. Won Wright Rose Medal of Pennsylvania Horticultural Society 1929.
7. **Mrs. Pierre S. du Pont.** HT. Yellow. \$2 each, 3 for \$5  
“Perpetual motion” golden yellow, seldom without flowers. Through merit alone won 9½ out of 10 points at Bagatelle. Neat grower like MME. BUTTERFLY. If you want a yellow get next to this top-of-the-list perpetual performer.
8. **Nuntius Pacelli.** HT. White. \$1.15 each, 10 for \$11  
An excellent snow-white bedder. A continuous performer. It is very fragrant, a rare quality among white Roses.
9. **Syracuse.** HT. Red. \$3.50 each  
An up and doing improvement over HADLEY with finer flowers like great scarlet-crimson balls. Introduced by us Fall, 1930.
10. **Druschki Rubra.** HP. Red. \$1.25 each, 10 for \$12  
Hybrid of AMERICAN BEAUTY and FRAU KARL DRUSCHKI, this red “Druschki” has better foliage and delightful perfume.
11. **President Briand.** HP. Pink. \$1.50 each, 10 for \$14  
Sends out crop after crop of mammoth clear pink “peony” Roses. A splendid example of the new strain of perpetually-blooming HPs.
12. **Mme. Gregoire Staechelin.** CLI. Pink. \$1.00 each, 10 for \$9  
The Spanish Beauty. Full description Page 5.

### Aristocrat of Climbers

The Conard-Pyle Co.,  
West Grove, Pa.

Meshanticut Park, R. I.,  
Jan. 1, 1930.

Gentlemen:

Mme. Gregoire Staechelin is, without doubt, the aristocrat of climbing Roses.

Those immense blooms of an iridescent pearl-pink, splashed with carmine, are not only beautiful,—they are also fragrant, a virtue rare in climbing Roses.

My plants, without any protection, proved perfectly hardy last winter.

Very truly,

R. MARION HATTON.

No. 1 dormant 2-year field plants on Multiflora  
One each of THE SPARKLING DOZEN,  
12 Novelties of Distinction, \$17.50

# The CONARD-PYLE COMPANY

ROBERT PYLE, President

## ★ ROSES---Continued

### NO. 1 DORMANT 2-YEAR FIELD PLANTS ON MULTIFLORA

Guarantee satisfaction to your trade with these Roses! Produced under closely-guarded conditions, as a studied specialty, this stock was originally intended for our own retail clientele which, it is quite generally admitted, ranks a very large share of the most particular buyers in the country. Only because of certain changes in retail catalog construction is this overflow available—it is not the usual haphazard surplus list.

The sturdy well-constructed **Multiflora Seedling** root will quickly tell your customer he can be thoroughly successful with these plants. You'll have fewer requests for replacements, too. The multi-branched top construction and plump, solid wood—the result of proper field dusting and spraying—will say to your prospect, "You can be proud of us—you'll enjoy fussing around us." First thing you know the plants have sold themselves—you've a good order, a nice profit!

#### HYBRID TEAS

100

Duchess of Wellington. Universally-liked yellow .....	\$35.00
Betty Uprichard. <i>Radiance</i> -like 2-toned pink .....	35.00
Charles K. Douglas. Real bloomer; scarlet crimson .....	35.00
Etoile de Feu. Flame-colored hot-weather variety .....	40.00
Etoile de Hollande. Almost faultless; perfumed, deep red .....	40.00
Gruss an Aachen. For borders or beds; fawn and white .....	35.00
Gruss an Teplitz. Still-called-for velvety crimson .....	35.00
Hawmark Crimson. Peerless deep-colored bedder .....	35.00
J. C. N. Forestier. Steadily-flowering clear carmine .....	40.00
Lady Alice Stanley. H.P.-hardy, flesh pink bedder .....	35.00
Magnafrano. Rich crimson-rose, 30 years old .....	35.00
Margaret McGredy. New front-rank orange scarlet .....	40.00
Miss Rowena Thom. <i>Radiance</i> -like U. S. novelty .....	50.00
Mrs. E. P. Thom. A leading yellow bedder .....	40.00
Red Radiance. You can't be without it .....	35.00
Rose Hill. Marvelously improved <i>Columbia</i> .....	50.00

#### HYBRID PERPETUALS

100

Frau Karl Druschki. <i>White American Beauty</i> .....	\$35.00
Gloire de Ch. Guin. Prize-winning crimson-red .....	35.00
John Russell. Handsome new red; stir-creating .....	50.00
Louise Crette. Finer and larger than <i>Druschki</i> .....	50.00
S. M. Gustave V. New solid <i>Paul Neyron</i> pink .....	75.00

#### RUGOSAS

100

Conrad F. Meyer. Silvery pink "trellis-beautifier" .....	\$35.00
--	---------

#### CLIMBERS ● *New*

100

Bloomfield Courage. A small, single <i>Dr. Huey</i> .....	\$75.00
Le Reve. A refined <i>Star of Persia</i> .....	50.00
●Mme Gregoire Staechelin. (Details page 5) .....	75.00
●Marguerite Carels. "Barrels of bloom"; new rich pink .....	75.00
Mary Lovett. "Repeating" large-flowered white .....	35.00
The Beacon. Red <i>American Pillar</i> .....	35.00

#### MULTIFLORA JAPONICA SEEDLINGS

*A slight overflow from our own selected stock.*

Write for full particulars.



# WHOLESALE PRICE-LIST

SPRING, 1931



## ROSES---Continued

YOUR SALES

UP

STEP

**S  
E  
L  
L**

## “THE SPANISH BEAUTY”

*New Climbing Rose,*

**MME. GREGOIRE STAECHELIN**

**Won first John Cook medal of American Rose Society**

The Spanish producer, Pedro Dot, got this award June 11, 1930, for STAECHELIN—“the best Rose introduced in past three years.”

**Got highest Rose award abroad**

In 1927 it secured Bagatelle Gold Medal—the highest international recognition that a rose can receive.

**Introduced in America by The Conard-Pyle Co.**

Discovered in Spain by a “Rose Ambassador” of this firm, STAECHELIN was first offered in 1928. Already well-advertised, people are ready to order.

**Dependable and Desirable**

It is by nature vigorous: Frau Karl Druschki (notably hardy) x Chateau de Clos Vougeot (famous for fragrance). Its hardiness has been tested by six consecutive winters at West Grove. Color: Iridescent-pearl pink with claret-carmine markings. The plant grows easily 12 feet or more a season.

**Practical, too**

Being a true Climber, the variety can be used for fences, pergolas, pillars or equal purposes. The flowers, borne on 12 to 15 in. stems, are excellent for cutting.

**“Selling” color plates at low cost. Sample free.**

Attractive, inexpensive “salesmen” to use in your daily mail or to distribute locally. Retail prices shown. Space for your name to be stamped or typed. \$3 per hundred, postpaid.

**No. 1 dormant 2-year field plants on Multiflora**

**\$1 each**

**10 for \$9**

**100 for \$75**

**KEEP THIS USEFUL TRADE-LIST HANDY!**

It serves you with 24 pages of valuable descriptions—pictures, fresh ideas, new ways to use stock, news of improved varieties, selling suggestions. Refer to it often and **ORDER** from it!

★ ROSES---Concluded  
Suggest Hugonis for Hedges



Something different—an impenetrable Hedge of  
*ROSA HUGONIS: Golden Shrub-Rose of China*

Clear yellow blooms, 1½ to 2 inches across, borne very early on slender, graceful branches. Compactly arranged erect growth, reaching six feet. Small sharp thorns. Tiny, persistent foliage often purple in Autumn. Proved hardiness.

For these reasons, HUGONIS is indispensable wherever an informal flowering hedge and impenetrable barrier are desired. Set plants 1½ to 2 feet apart.

**Dormant 2-year field plants, own roots,  
for immediate or Spring delivery**

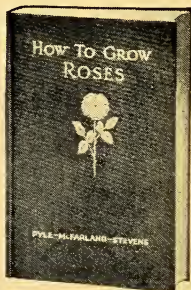
	100
1½ to 2 ft. ....	\$20.00
2 to 3 ft. ....	30.00

**Dollar Note** { Pick up extra profit by also selling  
HUGONIS as a yellow-flowering  
shrub and for the shrubbery border.

**ORDER A BOOK AND GET A SALESMAN!**

Save time. Give accurate advice. Benefit from another "urge" to buy. Let HOW TO GROW ROSES sell for you. It has:

1. Practical information. A "How to" Book. Three famous rosarians—Robert Pyle, Dr. J. Horace McFarland and G. A. Stevens (assistant to Dr. McFarland)—have pooled their knowledge and experience in writing the book. Every step in rose-growing is made so clear that any beginner can succeed.
2. Four-color illustrations. 32 pages of them, showing 45 varieties in natural colors.
3. Low Price. A three-dollar book for \$2.00! Every rose lover will buy it.



Copy \$2 postpaid  
5 Copies at \$1.20  
plus postage



# WHOLESALE PRICE-LIST

SPRING, 1931

Wherever "Green rugs" are needed outdoors, sell  
**Pachysandra Terminalis**



*Pachysandra* for covering bare spaces

This evergreen plant thrives where others would wither and die. Use it as a ground-cover, especially in the shade. Grows 5 to 8 inches high. Set plants closely.

2¼-in. pots, 100: \$8, 1,000: \$75  
 250 at 1000 rate

Brighten your list, and add to your  
 profit through selling these

## "Late Model" Ornamentals

(Full descriptions Pages 10-16)

	100
AMPELOPSIS <i>tricuspidata atropurpurea</i> ( <i>Purple Japanese Creeper</i> ) 2¼-in. pots .....	\$15.00
BERBERIS <i>thunbergi atropurpurea</i> ( <i>Redleaf Japanese Barberry</i> ) 2¼-in. pots .....	12.00
BERBERIS <i>thunbergi minor</i> ( <i>Box Barberry</i> ) 2-year, 9 to 12 in. bushy .....	20.00
DEUTZIA <i>lemoinei compacta</i> ( <i>Dwarf Lemoine Deutzia</i> ) 1 to 1½ ft. ....	25.00
DEUTZIA <i>macrothyrsa</i> 2 to 3 ft. ....	50.00
EUONYMUS <i>radicans acutus</i> ( <i>Sharpleaf Winter Creeper</i> ) 9 to 12 in. ....	15.00
FORSYTHIA <i>intermedia spectabilis</i> ( <i>Showy Border Forsythia</i> ) 3 to 4 ft. ....	25.00
HIBISCUS Wm. R. Smith ( <i>Shrub-Althea</i> ) 1½ to 2 ft. ....	20.00
KOLKWITZIA <i>amabilis</i> ( <i>Beautybush</i> ) 2¼-in. pots .....	15.00
PHILADELPHUS <i>Brachybortys</i> . 2 to 3 ft. ....	35.00
PHILADELPHUS <i>glacier</i> ( <i>Glacier Mock Orange</i> ) 1½ to 2 ft. ....	25.00
PHILADELPHUS <i>virginal</i> ( <i>Virginal Mock Orange</i> ) 2 to 3 ft. ....	25.00

# The CONARD-PYLE COMPANY

ROBERT PYLE, President

## LINING-OUT EVERGREENS

The much-heard-of 2¼ in. pot-grown plants



YOU'LL ROOT FOR THEIR ROOTS!

### THE SUM

Sand First + 2¼-in. Pots = Reliable Roots

Reliable Roots + Winter-Rest = Sealed Growing Power

Sealed Growing Power + Your Field = Your PROFITS!

	100	1000
<b>BUXUS semp. suffruticosa</b> ( <i>Truedwarf Box</i> ).....	\$7.00	\$60.00
<b>CHAMAECYPARIS laws. alumi</b> ( <i>Scarab C.</i> ).....	12.00	100.00
<b>JUNIPERUS ch. pfitzeriana</b> ( <i>Pfitzer Juniper</i> ).....	14.00	120.00
<b>comm. hibernica</b> ( <i>Irish Juniper</i> ) .....	12.00	100.00
<b>virg. keteleeri</b> ( <i>Keteleer Redcedar</i> ).....	25.00	
<b>virg. smithi</b> ( <i>Smith Redcedar</i> ).....	25.00	
<b>RETINOSPORA filifera</b> ( <i>Thread Retinospora</i> )	9.00	75.00
<b>obtusa compacta</b> ( <i>Football Cypress</i> ) .....	14.00	120.00
<b>obtusa gracilis</b> ( <i>Slender Hinoki Cypress</i> ) .....	14.00	120.00
<b>pisifera</b> ( <i>Sawara Retinospora</i> ) .....	9.00	75.00
<b>pisifera aurea</b> ( <i>Golden Sawara Retinospora</i> ) ...	9.00	75.00
<b>plumosa</b> ( <i>Plume Retinospora</i> ) .....	10.00	90.00
<b>plumosa aurea</b> ( <i>Golden Plume Retinospora</i> ).....	10.00	90.00
<b>plumosa lutescens</b> ( <i>Dwf. Yel. Pl. Cyp.</i> ) .....	10.00	90.00
<b>squarrosa veitchi</b> ( <i>Veitch Moss Cypress</i> ) .....	10.00	90.00
<b>TAXUS cuspidata nana</b> ( <i>Dwarf Japanese Yew</i> )	25.00	
<b>THUJA occ. compacta</b> ( <i>Parsons Arborvitae</i> ) ...	10.00	90.00
<b>occ. elegantissima</b> ( <i>Golden-tipped Arb.</i> ) .....	10.00	90.00
<b>occ. globosa</b> ( <i>American Globe Arborvitae</i> ) ...	10.00	90.00
<b>occ. lutea</b> ( <i>George Peabody Arborvitae</i> ).....	10.00	90.00
<b>occ. pumila</b> ( <i>Green Globe Arborvitae</i> ) .....	10.00	90.00
<b>occ. pyramidalis</b> ( <i>American Pyr. Arborvitae</i> ) ...	8.00	75.00
<b>occ. vervaeneana</b> ( <i>Vervaene Arborvitae</i> ) .....	8.00	75.00
<b>occ. wareana</b> ( <i>Siberian Arborvitae</i> ) .....	8.00	75.00

### NEW OPPORTUNITIES FOR PROFIT!

Sell Potted Evergreens for Japanese Dish Gardens, Miniature Golf Courses, Small Rockeries and other plantings, both inside and outside.

# WHOLESALE PRICE LIST

SPRING, 1931

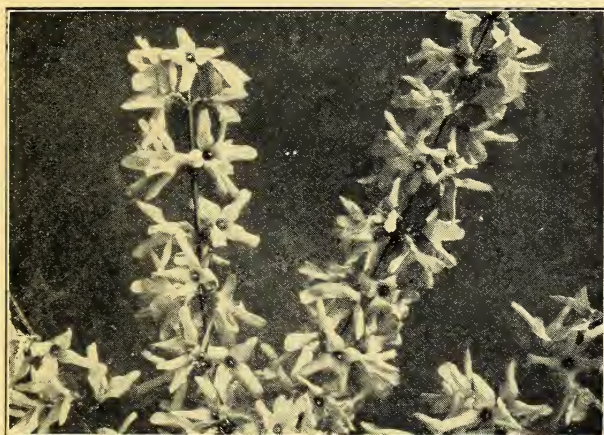
## LINING-OUT SHRUBS

From 2¼ in. pots, except as otherwise indicated  
250 of a kind at 1000 rate

IMPROVE YOUR STANDS; TIE TO THIS GRADE OF

YOUNG STOCK; YOU'LL ALWAYS BE

AHEAD AND SATISFIED



The richer, freer-blooming *Forsythia spectabilis*

	100	1000
● <i>Indicates improved varieties</i>		
ABELIA grandiflora ( <i>Glossy Abelia</i> )	\$8.00	\$75.00
grandiflora ( <i>Glossy Abelia</i> ) (3-in. pots)	10.00	90.00
AMPELOPSIS tricuspidata ( <i>Japanese Creeper</i> )	8.00	65.00
● tri. atropurpurea ( <i>Purple J. Creeper</i> )	15.00	
● BERBERIS thb. atropurpurea ( <i>Redleaf J. B.</i> )	12.00	100.00
BUDDLEIA d. magnifica ( <i>Oxeye B. B.</i> )	7.00	60.00
CLEMATIS paniculata ( <i>Sweet Autumn C.</i> )	7.00	55.00
DEUTZIA gracilis ( <i>Slender Deutzia</i> )	6.00	
gracilis rosea ( <i>Sl. Pink D.</i> )	7.00	60.00
lemoinei ( <i>Lemoine D.</i> )	7.00	60.00
● lem. compacta ( <i>Dwf. Lem. D.</i> )	10.00	80.00
● rosea eximia ( <i>Imp. Sl. Pink D.</i> )	10.00	80.00
EUONYMUS japonicus ( <i>Ev. Burning Bush</i> )	7.00	60.00
● rad. acutus ( <i>Sharpleaf W.</i> ) (3-in.)	10.00	80.00
rad. vegetus ( <i>Bigleaf W.</i> ) (3-in.)	12.00	100.00
● FORSYTHIA int. spectabilis ( <i>Showy Border F.</i> )	10.00	80.00
HEDERA helix ( <i>English Ivy</i> )	6.00	50.00
● KOLKWITZIA amabilis ( <i>Beautybush</i> )	15.00	120.00
LIGUSTRUM oval. aureum ( <i>Golden Privet</i> )	9.00	80.00
PHILADELPHUS Avalanche ( <i>Dwarf M. O.</i> )	7.00	60.00
Bouquet Blanc ( <i>White Bouquet M.</i> )	7.00	60.00
● brachybotrys	12.00	100.00
● Enchantment ( <i>Imp. White Bouquet M.</i> )	12.00	100.00
● Glacier ( <i>Glacier Mock Orange</i> )	12.00	100.00
● Virginal ( <i>Virginal Mock Orange</i> )	12.00	100.00
VIBURNUM tom. plicatum ( <i>Jap. Snowball</i> )	12.00	100.00

### Vigorous VIBURNUM PLICATUM

The finest in 33 years (see cut of Parent Stock Pp. 12 & 13)  
3-in. pots—100, \$12.00; 1,000, \$100.00

# The CONARD-PYLE COMPANY

ROBERT PYLE, President

## NEW MONEY for YOU!

. . . Give your trade greater value  
. . . Better stock is easier sold

Use 

## OAK BRAND SHRUBS

"All that the name signifies"

The dot ● indicates comparatively new varieties.

**ABELIA grandiflora.** *Glossy Abelia*  
Popular for border plantings. Dainty pink and white flowers abundantly produced. Almost evergreen.

	10	100	1000
2¼-in. pots .....	\$1.00	\$8.00	\$75.00
3-in pots .....	1.50	10.00	90.00

**AKEBIA quinata.** *Fiveleaf Akebia*  
Dainty, beautiful vine, with purple flowers in May. Leaves deep green, persisting till winter.

	10	100
2-year .....	\$3.00	\$25.00

**AMPELOPSIS quinquefolia.** *Virginia Creeper*  
Valuable for rich fiery autumn coloring. Useful for natural effects. Quick grower.

	10	100
2-year .....	\$1.50	\$12.00

**tricuspida (veitchi).** *Japanese Creeper*  
Clings as it grows. Foliage in autumn turns crimson.

	10	100	1000
2¼-in. pots .....	\$1.00	\$8.00	\$65.00
3-year .....	4.00	35.00	

● **tricuspida atropurpurea.** *Purple Japanese Creeper*  
The habit of attaching itself firmly and closely to stonework placed *Ampelopsis tricuspida* (Boston Ivy) in the forefront of popularity. This new variety, *Atropurpurea*, is similar to the type and possesses the added attraction of dark purple leaves not changing to green.

	10	100
2¼-in. pots .....	\$2.00	\$15.00

● **BERBERIS th. atropurpurea.** *Redleaf Japanese Barberry*  
The new form with bright reddish purple foliage; should be planted in sun for best color.

	10	100	1000
2¼-in. pots .....	\$1.50	\$12.00	\$100.00

● **thunbergi minor.** (See cut Page 11) *Box Barberry*  
Completely hardy. Dwarf, dense grower. The small leaves are a beautiful emerald-green in spring, soft green in summer, and rich red in autumn. A neat little shrub excellent as a low hedge or border for rose-beds and a splendid foundation planting.

	10	100
9 to 12 in. bushy (True type) .....	\$2.50	\$20.00

● **wilsonae.** *Wilson Barberry*  
Bailey says of *Berberis Wilsonae*: "Very distinct, handsome shrub, with small foliage assuming a brilliant fall coloring. Last year's branches are reddish brown. It has proven hardy at the Arnold Arboretum (in Massachusetts) in somewhat sheltered positions." Much used for specimens.

	10	100	1000
12 to 15 in. ....	\$2.50	\$20.00	\$180.00



# WHOLESALE PRICE-LIST

SPRING, 1931



*BERBERIS THUNBERGII MINOR: Box Barberry*

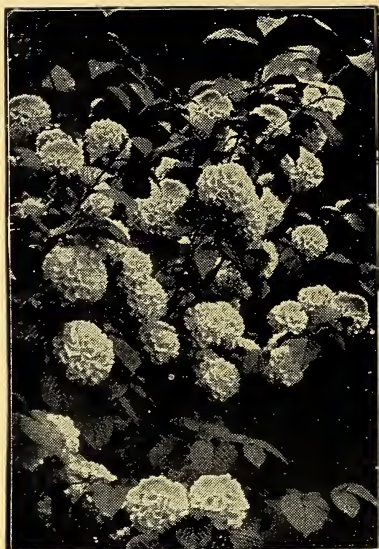
Put it down for a neat, small shrub, low hedge or border (Pg. 10)

<b>BUDDLEIA davidi magnifica.</b>	<i>Oxeye Butterfly Bush</i>			
Extensive bloomer, even the first year. Flowers deep violet-rose, delightfully fragrant.		10	100	1000
2¼-in. pots .....	\$1.20	\$7.00	\$60.00	
2-year .....	2.50	20.00		
<b>CALICARPA purpurea.</b>	<i>Chinese Beautyberry</i>			
Pink flowers in August; light purple berries.		10	100	
2 to 3 ft. ....	\$3.00	\$25.00		
<b>CELASTRUS scandens.</b>	<i>American Bittersweet</i>			
Yellow flowers, followed by orange-colored berries.		10	100	
2-year .....	\$2.50	\$20.00		
<b>CLEMATIS paniculata.</b>	<i>Sweet Autumn Clematis</i>			
Intensely sweet-scented, small, creamy white flowers completely cover the vine.		10	100	1000
2¼-in. pots .....	\$1.20	\$7.00	\$55.00	
2-year .....	2.00	15.00	135.00	
3-year .....	2.50	20.00	180.00	
<b>DEUTZIA gracilis.</b>	<i>Slender Deutzia</i>			
White, bell-shaped flowers. Dwarf grower, nice for edging other shrubbery.		10	100	1000
2¼ pots .....	\$1.00	\$6.00		
10 to 12 in. ....	1.20	8.00		
12 to 15 in. ....	1.50	10.00	\$90.00	
15 to 18 in. ....	1.75	12.00	110.00	
<b>gracilis rosea.</b>	<i>Slender Pink Deutzia</i>			
Closely resembles <i>Slender Deutzia</i> . Light rose colored flowers. A pleasing variety.		10	100	1000
2¼-in. pots .....	\$1.20	\$7.00	\$60.00	
1½ to 2 ft. ....	2.75	22.00		
<b>lemoinei.</b>	<i>Lemoine Deutzia</i>			
Early white. Much superior to <i>D. gracilis</i> .		10	100	1000
2¼-in. pots .....	\$1.20	\$7.00	\$60.00	
1 to 1½ ft. ....	1.50	12.00		
2 to 2½ ft. ....	2.50	20.00		
<b>lemoinei compacta.</b>	<i>Improved Lemoine Deutzia</i>			
Compact habit.		10	100	1000
2¼-in. pots .....	\$1.50	\$10.00	\$80.00	
1 to 1½ ft. ....	3.00	25.00		
1½ to 2 ft. ....	3.00	35.00		



# The CONARD-PYLE COMPANY

ROBERT PYLE, President



For character in landscape effects, for graceful floral pieces—order these VIBURNUM

● (DEUTZIA) *macrothyrsa*.

Lemoine describes this variety as perhaps the most floriferous of his Deutzias; the tall shrub being covered on the whole length of its branches with a profusion of pure white flowers in panicles of an unusual size.

	10	100
2 to 3 ft. ....	\$6.00	\$50.00

**Pride of Rochester.**

*Large-flowered Deutzia*

Very vigorous grower. Large, double white flowers.

	10	100
2 to 3 ft. ....	\$2.00	\$15.00
3 to 4 ft. ....	2.50	20.00

***scabra crenata*.**

*Double Pink Deutzia*

Strong grower; double flowers tinted rosy white.

	10	100
3 to 4 ft. ....	\$2.50	\$20.00

**EUONYMUS japonicus.**

*Evergreen Burningbush*

A most ornamental evergreen shrub that is a moderate, shapely, upright grower.

	10	100	1000
2¼-in pots .....	\$1.00	\$7.00	\$60.00
10 to 12 in. B. & B. ....	4.00	35.00	
1 to 1½ ft. B. & B. ....	5.50	50.00	

**radicans.**

*Wintercreeper*

A splendid covering for low retaining walls. Small rich green leaves.

	10	100
9 to 12 in. ....	\$2.00	\$15.00
12 to 15 in. ....	2.50	20.00

# WHOLESALE PRICE-LIST

SPRING, 1931



PLICATUM! Quality backed by thirty-three years of learning how. (See Pg. 16.)

● **radicans acutus.** *Sharpleaf Wintercreeper*

Similar to the type, but more pointed leaves, lighter in color. A rapid grower and evidently the best *Euonymus* yet for steep banks as it is a very prostrate grower, showing no inclination to climb, roots at every place it touches soil and would be excellent to hold banks. Turns bronzed in cold weather.

	10	100	1000
2¼-in. pots .....	\$1.50	\$10.00	\$80.00
9 to 12 in. ....	2.00	15.00	
12 to 15 in. ....	2.50	20.00	
15 to 18 in. ....	3.00	25.00	

**radicans vegetus.** *Big-leaf Wintercreeper*

A most beautiful vine, bearing bright red berries well into the winter.

	10	100	1000
3-in. pots .....	\$1.50	\$12.00	\$100.00
2-year medium .....	2.00	15.00	

● **FORSYTHIA int. spectabilis.** *Showy Border Forsythia*

Acknowledged the finest *Forsythia*; much more profuse-flowering than the original type, and several shades richer in its glorious deep yellow. Plants vigorous and compact.

	10	100	1000
2¼-in. pots .....	\$1.50	\$10.00	\$80.00
3 to 4 ft. ....	3.00	25.00	

**viridissima.** *Green-Stem Forsythia*

Green bark; thick, dark green leaves. Deep yellow flowers.

	10	100
1½ to 2 ft. ....	\$1.50	\$12.00
3 to 4 ft. ....	2.50	22.00





For character in landscape effects, for graceful floral pieces—order these VIBURNUM PLICATUM! Quality backed by thirty-three years of learning how. (See Pg. 16.)

● (DEUTZIA) macrothyrsa.

Lemoine describes this variety as perhaps the most floriferous of his Deutzias; the tall shrub being covered on the whole length of its branches with a profusion of pure white flowers in panicles of an unusual size.

	10	100
2 to 3 ft. ....	\$6.00	\$50.00

**Pride of Rochester.**

*Large-flowered Deutzia*

Very vigorous grower. Large, double white flowers.

	10	100
2 to 3 ft. ....	\$2.00	\$15.00
3 to 4 ft. ....	2.50	20.00

**scabra crenata.**

*Double Pink Deutzia*

Strong grower; double flowers tinted rosy white.

	10	100
3 to 4 ft. ....	\$2.50	\$20.00

**EUONYMUS japonicus.**

*Evergreen Burningbush*

A most ornamental evergreen shrub that is a moderate, shapely, upright grower.

	10	100	1000
2¼-in pots .....	\$1.00	\$7.00	\$60.00
10 to 12 in. B. & B. ....	4.00	35.00	
1 to 1½ ft. B. & B. ....	5.50	50.00	

**radicans.**

*Wintercreeper*

A splendid covering for low retaining walls. Small rich green leaves.

	10	100
9 to 12 in. ....	\$2.00	\$15.00
12 to 15 in. ....	2.50	20.00

● **radicans acutus.**

*Sharpleaf Wintercreeper*

Similar to the type, but more pointed leaves, lighter in color. A rapid grower and evidently the best Euonymus yet for steep banks as it is a very prostrate grower, showing no inclination to climb, roots at every place it touches soil and would be excellent to hold banks. Turns bronzed in cold weather.

	10	100	1000
2¼-in. pots .....	\$1.50	\$10.00	\$80.00
9 to 12 in. ....	2.00	15.00	
12 to 15 in. ....	2.50	20.00	
15 to 18 in. ....	3.00	25.00	

**radicans vegetus.**

*Big-leaf Wintercreeper*

A most beautiful vine, bearing bright red berries well into the winter.

	10	100	1000
3-in. pots .....	\$1.50	\$12.00	\$100.00
2-year medium .....	2.00	15.00	

● **FORSYTHIA int. spectabilis.**

*Showy Border Forsythia*

Acknowledged the finest Forsythia; much more profuse-flowering than the original type, and several shades richer in its glorious deep yellow. Plants vigorous and compact.

	10	100	1000
2¼-in. pots .....	\$1.50	\$10.00	\$80.00
3 to 4 ft. ....	3.00	25.00	

**viridissima.**

*Green-Stem Forsythia*

Green bark; thick, dark green leaves. Deep yellow flowers.

	10	100
1½ to 2 ft. ....	\$1.50	\$12.00
3 to 4 ft. ....	2.50	22.00





# The CONARD-PYLE COMPANY

ROBERT PYLE, President



*Hibiscus Wm. R. Smith*—tops group, because giant-flowered

<b>HEDERA helix.</b>		<i>English Ivy</i>	
Hardy evergreen clinging vine with dark, glossy green leaves. Ideal wall-cover.			
	10	100	1000
2¼-in. pots .....	\$1.00	\$6.00	\$50.00
<b>HIBISCUS double pink.</b>		<i>Shrub-Althea</i>	
Very deep dark pink flowers.	10	100	
1½ to 2 ft. ....	\$1.50	\$12.00	
2 to 3 ft. ....	1.75	15.00	
<b>Jeanne d'Arc.</b>		<i>Shrub-Althea</i>	
Large, double, pure white flowers like roses.			
	10	100	
1½ to 2 ft. ....	\$1.75	\$12.00	
2 to 3 ft. ....	2.00	15.00	
● <b>Wm. R. Smith.</b>		<i>Shrub-Althea</i>	
A splendid giant-flowering variety, naturally forming symmetrical bushy specimens. Glistening pure white flowers like great morning-glories fully four inches in diameter; under ordinary cultivation they open out flat quite different from the older types which only partially expand. Blooms when few Shrubs are in flower.			
	10	100	
10 to 12 in. ....	\$2.00	\$15.00	
1 to 1½ ft. .... (See Cut) .....	2.25	18.00	
1½ to 2 ft. ....	2.50	20.00	
<b>HYDRANGEA arborescens grandiflora.</b>		<i>Snowhill Hyd.</i>	
Blooms right after early spring flowers are gone, and the great white flowers last until late August.			
	10	100	1000
1 to 1½ ft. ....	\$1.50	\$12.00	\$100.00
1½ to 2 ft. ....	2.00	15.00	125.00
2 to 3 ft. ....	2.50	20.00	180.00
<b>paniculata grandiflora.</b>		<i>Peegee Hydrangea</i>	
An old variety still in strong demand.			
	10	100	1000
1½ to 2 ft. ....	\$2.00	\$15.00	\$135.00
2 to 3 ft. ....	2.50	20.00	180.00
● <b>KOLKWITZIA amabilis.</b>		<i>Beautybush</i>	
A graceful, ornamental shrub closely related to the Abelias and Weigelas. Blush-pink flowers, like Weigela blooms, almost completely cover the bush. Recommended by late Dr. E. H. Wilson and other authorities.			
	10	100	1000
2¼-in. pots .....	\$2.00	\$15.00	\$120.00
<b>LIGUSTRUM ibolium.</b>		<i>Ibolium Privet</i>	
A cross between Iбота and California Privet, combining the hardiness and vigor of the former with the beauty of the latter.			
	10	100	1000
2 to 3 ft. ....	\$1.00	\$7.00	\$65.00
3 to 4 ft. ....	1.50	12.00	100.00



# WHOLESALE PRICE-LIST

SPRING, 1931

## (LIGUSTRUM) *ibota regelianum*. (Cuttings). *Regal Privet*

Very desirable for shrubbery or evergreen plantings. Makes splendid, low, dense hedges. 10 100  
2 to 2½ ft. ----- \$2.00 \$16.00

## *ovalifolium*. *California Privet*

Thrives in all kinds of soil and situations. The ever-popular hedge plant. 10 100 1000  
3 to 4 ft. ----- \$1.00 \$7.00 \$60.00

## *ovalifolium aureum*. *Golden Privet*

Manda's true golden. Consistent. Leaves variegated with pale yellow. A rather slow grower.

10 100  
15 to 18 in. ----- \$2.00 \$15.00  
2 to 2½ ft. ----- 4.00 35.00

## *LONICERA halliana*. *Hall Japanese Honeysuckle*

Hardy evergreen foliage; continuous-blooming; flowers white, turning to pale yellow; very fragrant.

10 100  
2-year ----- \$2.00 \$15.00

## *japonica aureo-reticulata*. *Yellownet Jap. Honeysuckle*

Flowers yellow. Foliage veined yellow. Very ornamental.

10 100  
2-year ----- \$2.00 \$15.00

## *morrowi*. *Morrow Honeysuckle*

One of the most attractive berried bushes grown. Fine for screens or backgrounds to other shrubs. Yellow flowers; brilliant, long-lasting scarlet berries.

10 100  
3 to 4 ft. ----- \$2.50 \$20.00

## ● *PHILADELPHUS Avalanche*. *Dwarf Mock Orange*

Large, fragrant, white flowers on arching branches.

10 100 1000  
2¼-in. pots ----- \$1.00 \$7.00 \$60.00  
3 to 4 ft. ----- 3.50 30.00

## *Bouquet Blanc*. *White Bouquet Mock Orange*

Low, dense habit. Large white flowers, borne in immense quantities.

10 100  
2 to 3 ft. ----- \$2.50 \$20.00  
3 to 4 ft. ----- 3.50 30.00

## ● *Brachybotrys*.

"The best *Philadelphus* introduced from China," says Lemoine. Its tall branches are covered with large fragrant flowers which set it up as truly the finest of this new group.

10 100 1000  
2¼-in. pots ----- \$1.50 \$12.00 \$100.00  
2 to 3 ft. ----- 4.00 35.00  
3 to 4 ft. ----- 6.00 50.00

## ● *Enchantment*. *Improved White Bouquet Mock Orange*

Lemoine describes this variety as an improved *Bouquet Blanc* (see above). It makes a most striking appearance with long erect branches furnished with thick panicles of double white flowers.

10 100 1000  
2¼-in. pots ----- \$1.50 \$12.00 \$100.00  
1½ to 2 ft. ----- 3.00 25.00

## ● *Glacier*. *Glacier Mock Orange*

Strong, erect grower; clusters of double white flowers, set in panicles having the appearance of one enormous double flower.

10 100 1000  
2¼-in. pots ----- \$1.50 \$12.00 \$100.00  
1½ to 2 ft. ----- 3.00 25.00

# The CONARD-PYLE COMPANY

ROBERT PYLE, President

## (PHILADELPHUS) Manteau d'Hermine.

*White Mantle M. O.*

A dwarf variety with very small leaves.

	10	100	
1½ to 2 ft. ....	\$2.00	\$15.00	

### ●Virginal.

*Virginal Mock Orange*

Here is the most beautiful variety of its class. It produces large double-crested flowers of pure white, deliciously fragrant. Blooms two and one-half inches across and in May and early June completely cover the branches. Blooms all Summer and early Fall.

	10	100	1000
2¼-in. pots .....	\$1.50	\$12.00	\$100.00
1½ to 2 ft. ....	2.50	18.00	160.00
2 to 3 ft. ....	3.00	25.00	200.00

## SPIREA, Anthony Waterer.

*Waterer Spirea*

The perpetually blooming Red Spirea. It makes nice shapely bushes 2 to 3 feet high and bears flat clusters of rich, rosy red flowers throughout the summer.

	10	100	1000
12 to 15 in. ....	\$1.50	\$10.00	\$90.00
15 to 18 in. ....	2.00	15.00	135.00
1½ to 2 ft. ....	2.50	20.00	180.00

### prunifolia fl. pl.

*Bridal Wreath*

Handsome, dark green, shining foliage turning orange in autumn. White flowers in May.

	10	100	1000
1½ to 2 ft. ....	\$2.00	\$15.00	
2 to 3 ft. ....	2.50	20.00	\$180.00
3 to 4 ft. ....	3.50	30.00	250.00

### thunbergi.

*Thunberg Spirea*

Slender, arching branches, clothed with pure white flowers. Small, feathery, light-green leaves.

	10	100	
2 to 2½ ft. ....	\$2.50	\$20.00	
3 to 4 ft. ....	4.50	40.00	

### vanhouttei.

*Van Houtte Spirea*

Most popular hardy Spirea. Pure snow-white flowers all over the plant.

	10	100	1000
2 to 3 ft. ....	\$2.00	\$15.00	\$125.00
3 to 4 ft. ....	2.50	20.00	180.00

## SYMPHORICARPOS racemosus.

*Common Snowberry*

Conspicuous white berries; attractive foliage. Succeeds well in shaded locations.

	10	100	
2 to 3 ft. ....	\$2.00	\$16.00	

## SYRINGA persica rubra.

*Persian Red Lilac*

Purplish red flowers borne in great profusion all over the bush.

	10	100	
2 to 3 ft. ....	\$4.00	\$35.00	

## VIBURNUM tomentosum plicatum.

*Japanese Snowball*

Fairly covered with great white balls of snow about Memorial Day. Heavy-ribbed, dark green foliage, peculiarly becoming. (*Our reputation for lining-out stock of this shrub is well-known far and wide in the trade.*)

	10	100	1000
3-in. pots (Finest in 33 years) .....	\$1.50	\$12.00	\$100.00
2 to 3 ft. ....(Large photo Page 12)	4.00	35.00	300.00

## WEIGELA Eva Rathke.

*Red-flowered Weigela*

The Everblooming Weigela. Dark red flowers, marked white, and splendid foliage produce an effect not to be had in any other shrub; flowers continuously.

	10	100	1000
1½ to 2 ft. ....	\$2.50	\$18.00	
2 to 3 ft. ....	3.00	25.00	\$200.00
3 to 4 ft. ....	4.00	35.00	

### rosea.

*Pink Weigela*

Rose-pink flowers in great profusion. Vigorous grower.

	10	100	
2 to 3 ft. ....	\$2.25	\$18.00	

# WHOLESALE PRICE-LIST

SPRING, 1931

## EVERGREENS

Grown in a clay-base loam, ideal for balling.



For edging walks and flower beds: *Buxus semp. suffruticosa*. 4 to 6 in.

### **BUXUS sempervirens.** *Common Box*

A faster and less dense growing form of dwarf box-wood. Useful for formal hedges.

	10	100	1000
10 to 12 in. ....	\$6.00	\$50.00	\$350.00

### **sempervirens suffruticosa.** *Truedwarf Box*

Dwarf grower, with very dark green leaves. A most beautiful plant for edging walks and flower-beds.

	10	100	1000
2¼-in pots .....	\$1.00	\$7.00	\$60.00
2 to 4 in. ....	1.50	10.00	90.00
4 to 6 in. <b>bushy</b> ..... (See Cut) .....	3.00	25.00	200.00

### **CHAMAECYPARIS lawsoniana alumi.** *Scarab Cypress*

Of columnar habit; foliage very glaucous, with a bluish metallic hue. The best blue columnar form.

	10	100	1000
2¼-in. pots .....	\$1.50	\$12.00	\$100.00
1½ to 2 ft. B. & B. ....	12.50	100.00	
2 to 2½ ft. B. & B. ....	17.50	150.00	

### **JUNIPERUS pfitzeriana.** *Pfitzer Juniper*

Highly recommended, and perhaps the handsomest green Juniper. Medium to large flower, dense in center, spreading to pointed, feathery, graceful foliage.

	10	100	1000
2¼-in. pots .....	\$2.00	\$14.00	\$120.00
12 to 15 in. B. & B. ....	6.00	50.00	400.00
1 to 1½ ft. B. & B. ....	12.50	100.00	
2 to 2½ ft. B. & B. ....	27.50	250.00	
2½ to 3 ft. B. & B. ....	32.50	300.00	

### **communis hibernica.** *Irish Juniper*

A very narrow pyramid. Useful for its spire-like effect.

	10	100	1000
2¼-in. pots .....	\$1.50	\$12.00	\$100.00
10 to 12 in. B. & B. 2-year field .....	4.00	35.00	
1½ to 2 ft. B. & B. ....	12.50	100.00	

### ADDITIONAL PROFIT!

Japanese Dish Gardens, Miniature Golf Courses and Little Rockeries offer you new outlets for small evergreens.

# The CONARD-PYLE COMPANY

ROBERT PYLE, President

**(JUNIPERUS) virginiana burki.** *Burk Redcedar*  
 A narrow fastigate grower, with steel-blue foliage; very symmetrical.

	10	100	
1 to 1½ ft. B. & B. ....	\$20.00	\$150.00	
2 to 2½ ft. B. & B. ....	30.00	250.00	

**virginiana keteleeri.** *Keteleer Redcedar*

A fine variety with beautiful intense green foliage. Symmetrical growth with tops of branches ascending; very compact and formal. Adapted for tub purposes.

	10	100	
2¼-in. pots .....	\$3.00	\$25.00	
1 to 1½ ft. B. & B. ....	12.50	100.00	
1½ to 2 ft. B. & B. ....	20.00	150.00	
2 to 2½ ft. B. & B. ....	25.00	200.00	

**virginiana smithi.** *Smith Redcedar*

Scarce. This is the only Juniper which keeps a grass-green color during the winter. Branches are sparingly ramified and pendulous at tips; forms a broad, compact, pyramidal tree.

	10	100	
2¼-in. pots .....	\$3.00	\$25.00	
1 to 1½ ft. B. & B. ....	20.00	150.00	

**PINUS montana mughus.** *Dwarf Mugho Pine*

Distinct; of compact and prostrate habit, with the tips of branches ascending; the leaves are twisted slightly.

	10	100	
9 to 12 in. B. & B. ....	\$10.00	\$75.00	
12 to 15 in. B. & B. ....	12.50	100.00	
15 to 18 in. B. & B. ....	17.50	150.00	

**nigra.** *Austrian Pine*

A robust, stately tree of rapid growth, and very hardy. Stiff, long dark green leaves in pairs. The winter buds are whitish and long.

	10	100	
9 to 12 in. B. & B. ....	\$6.00	\$50.00	
3 to 4 ft. B. & B. ....	40.00	350.00	
4 to 5 ft. B. & B. ....	55.00	500.00	

**sylvestris.** *Scotch Pine*

Of rapid growth, with strong branches and short, stiff, bluish green foliage. Develops into a tall, round-headed tree, very useful for sky-line effects.

	10	100	
1½ to 2 ft. B. & B. ....	\$7.50	\$65.00	
2 to 2½ ft. B. & B. ....	9.00	85.00	

**RETINOSPORA filifera.** *Thread Retinospora*

An elegant, drooping form. The thread-like, pensile branchlets are very graceful and are furnished with small, sharp-pointed, glossy green leaves.

	10	100	1000
2¼-in. pots .....	\$1.20	\$ 9.00	
8 to 10 in. 2-year field .....	2.00	15.00	
12 to 15 in. B. & B. ....	3.00	25.00	\$200.00
15 to 18 in. B. & B. ....	4.00	35.00	300.00
1½ to 2 ft. B. & B. ....	12.50	100.00	

**obtusa.** *Hinoki Cypress*

Graceful tree; foliage bright, clear green. Grows slowly and has a marked Japanese appearance.

	10	100	1000
2¼-in. pots .....	\$2.00	\$16.00	\$150.00
8 to 10 in. B. & B. 2-year field .....	4.00	35.00	

**obtusa compacta.** *Football Cypress*

Almost spherical in shape. Good green during winter—useful in foundation planting.

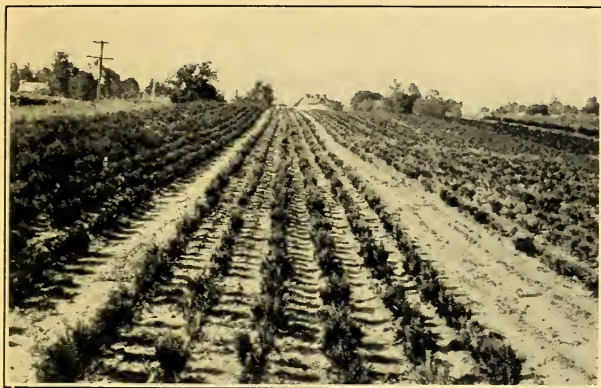
	10	100	1000
2¼-in. pots .....	\$2.00	\$14.00	\$120.00
10 to 12 in. B. & B. 2-year field .....	10.00	75.00	
1 to 1½ ft. B. & B. ....	12.50	100.00	

Add charm to Rock Gardens with *Dwarf Mugho Pine* and the "Japanese-y" *Football Cypress (Ret. obtusa compacta)*



# WHOLESALE PRICE-LIST

SPRING, 1931



A wise choice for value—*Thuja occ. elegantissima*. 8 to 10 in.

**(RETINOSPORA) obtusa gracilis.** *Slender Hinoki Cypress*

Beautiful, rare type of Retinospora, dense in habit; more erect and pyramidal in growth than the others.

	10	100	1000
2¼-in. pots .....	\$2.00	\$14.00	\$120.00
1 to 1½ ft. B. & B. ....	10.00	75.00	
1½ to 2 ft. B. & B. ....	17.50	150.00	
2 to 2½ ft. B. & B. ....	25.00	200.00	

**pisifera.** *Sawara Retinospora*

Loosely pyramidal, with excellent feathery foliage. It is a hardy, graceful and rapid-growing evergreen.

	10	100	1000
2¼-in. pots .....	\$1.50	\$9.00	\$75.00
10 to 12 in. B. & B. 2-year field .....	3.00	25.00	200.00
1½ to 2 ft. B. & B. ....	6.00	50.00	
2 to 2½ ft. B. & B. ....	8.00	75.00	

**pisifera aurea.** *Golden Sawara Ret.*

Golden feathery foliage. One of the most exquisite Retinosporas. Good Winter color.

	10	100	1000
10 to 12 in. B. & B. 2-year field .....	\$3.00	\$25.00	\$200.00
1 to 1½ ft. B. & B. ....	4.00	35.00	
1½ to 2 ft. B. & B. ....	6.00	50.00	
2 to 2½ ft. B. & B. <i>extra selected</i> ..	12.50	100.00	

**plumosa.** *Plume Retinospora*

Dwarf and dense-growing; branches slender and feathery. Very popular.

	10	100	1000
2¼-in pots .....	\$1.50	\$10.00	\$90.00
1 to 1½ ft. B. & B. ....	6.00	50.00	
1½ to 2 ft. B. & B. ....	8.00	75.00	
2 to 2½ ft. B. & B. ....	12.50	100.00	

**plumosa aurea.** *Golden Plume Retinospora*

A golden form of the preceding. It is one of the most popular evergreens, particularly liked for its rich yellow foliage, which shows up well among the more somber evergreens.

	10	100	1000
2¼-in. pots .....	\$1.50	\$10.00	\$90.00
8 to 10 in. B. & B. 2-year field .....	3.00	25.00	200.00
1½ to 2 ft. B. & B. ....	9.00	75.00	

**plumosa lutescens.** *Dwarf Yellow Plume Cypress*

Forms a low, broad, round-topped bush; bright yellow-tipped branchlets.

	10	100	1000
2¼-in pots .....	\$1.50	\$10.00	\$90.00
6 to 8 in. B. & B. 2-year field .....	3.00	25.00	200.00
8 to 10 in. B. & B. ....	4.00	35.00	
10 to 12 in. B. & B. ....	6.00	50.00	

**FOR URNS, TUBS OR WINDOW BOXES:**  
*Retinospora plumosa, Retinospora plumosa aurea*



# The CONARD-PYLE COMPANY

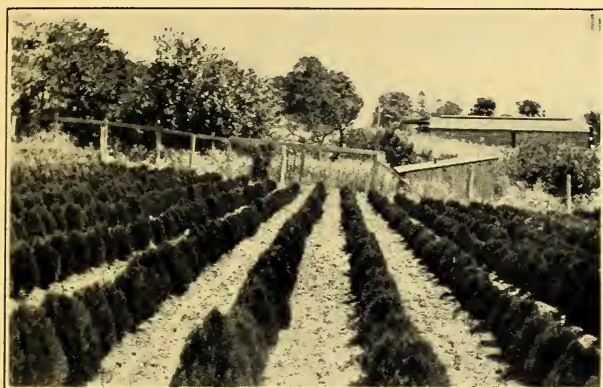
ROBERT PYLE, President

<b>(RETINOSPORA) squarrosa sulphurea.</b>	<i>Sulphur Moss</i>			
A beautiful variety with sulphur-tinted shoots; quite distinct.		10	100	1000
10 to 12 in. B. & B. 2-year field		\$3.00	\$25.00	\$200.00
1 to 1½ ft. B. & B.		5.50	50.00	
<b>squarrosa veitchi.</b>	<i>Veitch Moss Cypress</i>			
Silvery blue foliage, soft and graceful, gives woolly appearance. Broad, pyramidal outline in young plants.		10	100	1000
2¼-in. pots		\$1.50	\$10.00	\$90.00
10 to 12 in. B. & B. 2-year field		3.00	25.00	200.00
12 to 15 in. B. & B.		6.00	50.00	
<b>TAXUS cuspidata nana.</b>	<i>Dwarf Japanese Yew</i>			
Often called "cuspidata brevifolia." One of the richest and most handsome dwarf evergreens and typically Japanese in its beauty. The spreading branches are thickly clothed with short, dark green needles.		10	100	
2¼-in. pots		\$3.00	\$25.00	
<b>THUJA occidentalis compacta.</b>	<i>Golden-tipped Arborvitae</i>			
Dwarf, dense grower, almost globe-shaped. Bright green foliage. Handsome.		10	100	1000
2¼-in. pots		\$1.50	\$10.00	\$90.00
8 to 10 in. B. & B. 2-yr. field		3.00	25.00	200.00
10 to 12 in. B. & B.		4.00	35.00	
10 to 12 in. B. & B. <i>extra bushy</i>		6.00	50.00	
<b>occidentalis elegantissima.</b>	<i>Golden-tipped Arborvitae</i>			
Rich, lustrous green foliage; branches tipped with yellow. Fast grower.		10	100	1000
2¼-in. pots		\$1.50	\$10.00	\$90.00
8 to 10 in. B. & B. 2-year field		3.00	25.00	200.00
12 to 15 in. B. & B.		4.00	35.00	
1½ to 2 ft. B. & B.		8.00	75.00	
<b>occidentalis globosa.</b>	<i>American Globe Arborvitae</i>			
Naturally globe-shaped. Useful for formal work.		10	100	1000
2¼-in. pots		\$1.50	\$10.00	\$90.00
6 to 8 in. B. & B. 2-year field		3.00	25.00	
9 to 12 in. B. & B.		4.00	35.00	
<b>occidentalis lutea.</b>	<i>George Peabody Arborvitae</i>			
Showy, bright yellowish green all through the winter, changing to golden yellow in spring. Forms a compact, broad pyramid.		10	100	1000
2¼-in. pots		\$2.00	\$10.00	\$90.00
4 to 6 in. B. & B. 2-year field		3.00	25.00	
12 to 15 in. B. & B.		10.00	75.00	
<b>occidentalis pumila.</b>	<i>Green Globe Arborvitae</i>			
Dwarf; globe-shaped.		10	100	1000
2¼-in. pots		\$1.50	\$10.00	\$90.00
6 to 8 in. B. & B. 2-year field		3.00	25.00	
12 to 15 in. B. & B.		8.00	75.00	
15 to 18 in. B. & B.		12.50	100.00	
<b>occidentalis pyramidalis.</b>	<i>American Pyramidal Arborvitae</i>			
A choice narrow columnar tree that grows from 20 to 30 feet high. Stays bright green in winter. Excellent for accents and formal planting.		10	100	1000
2¼-in. pots		\$1.20	\$8.00	\$75.00
10 to 12 in. B. & B. 2-year field		3.00	25.00	
1 to 1½ ft. B. & B.		6.00	50.00	
1½ to 2 ft. B. & B.		8.00	75.00	
2 to 2½ ft. B. & B.		12.50	100.00	
2 to 2½ ft. B. & B. <i>well filled</i>		15.00	125.00	
2½ to 3 ft. B. & B.		20.00	150.00	

**A RAPID GROWER MAKES QUICK TURNOVER**  
*Thuja occ. elegantissima (Golden-tipped Arb.)*

# WHOLESALE PRICE-LIST

SPRING, 1931



Perfect for many purposes: "*Biota*" *Aurea Nana*.  
15 to 18 in. and 18 to 21 in.

<b>(THUJA) occidentalis vervaeneana.</b>	<i>Vervaene Arborvitae</i>		
Graceful, bronze, mottled tree for many uses.			
		10	100
2¼-in. pots .....	\$1.20	\$8.00	\$75.00
8 to 10 in. B. & B. 2-year field .....	3.00	25.00	
12 to 15 in. B. & B. ....	4.00	35.00	
1½ to 2 ft. B. & B. ....	8.00	75.00	
2 to 2½ ft. B. & B. ....	12.50	100.00	
<b>occidentalis vervaeneana variegata.</b>	<i>Variieg. Verv. Arb.</i>		
		10	100
12 to 15 in. B. & B. ....	\$4.00	\$35.00	
15 to 18 in. B. & B. ....	6.00	50.00	
<b>occidentalis wareana.</b>	<i>Siberian Arborvitae</i>		
Compact, pyramidal habit; constant in color; fine for hedges and screens. Very hardy.			
		10	100
2¼-in. pots .....	\$1.20	\$8.00	\$75.00
8 to 10 in. B. & B. 2-year field .....	3.00	25.00	
12 to 15 in. B. & B. ....	5.50	50.00	
15 to 18 in. B. & B. ....	6.50	60.00	
<b>(Biota) orientalis</b>	<i>Oriental Arborvitae</i>		
Tall and slender. Rich cheerful green. Fine for formal work.			
		10	100
2½ to 3 ft. B. & B. ....	\$17.50	\$150.00	
<b>(Biota) orientalis aurea nana.</b>	<i>Berckman's Golden Arb.</i>		
Very pretty dwarf form with yellow-tinged foliage, changing to bronze.			
		10	100
10 to 12 in. B. & B. ....	\$10.00	\$75.00	
12 to 15 in. B. & B. ....	12.50	100.00	
15 to 18 in. B. & B. ....	15.00	125.00	
18 to 21 in. B. & B. ( <u>Cut above</u> ) .....	20.00	175.00	
<b>(Biota) orientalis elegantissima.</b>	<i>Yellow Column Arb.</i>		
Compact and columnar. Assumes a rich, deep golden bronze color in winter. Handsome.			
		10	100
1½ to 2 ft. B. & B. ....	\$12.50	\$100.00	
2 to 2½ ft. B. & B. ....	17.50	150.00	
2½ to 3 ft. B. & B. ....	22.50	200.00	
<b>TSUGA canadensis.</b>	<i>Canada Hemlock</i>		
Most graceful and adaptable, the spreading horizontal branches making effective shadow effects. Useful for hedges and informal and formal work when sheared.			
		10	100
1½ to 2 ft. B. & B. ....	\$12.50	\$100.00	
2 to 2½ ft. B. & B. ....	17.50	150.00	

**Hedge Plant Par Excellence!**  
**TSUGA CANADENSIS**

# The CONARD-PYLE COMPANY

ROBERT PYLE, President

Get Million Dollar Effect at Minimum Cost

... with ...

## ☠ "Good Luck" CANNAS

Prices are for plump dormant divisions, 2 to 3 eyes, "plus" roots. Prices of plants from 3-in. pots, ready May 1st, are same as for dormant roots except \$3 per 100 must be added on all varieties priced herein at less than \$8 per hundred.

	100	1000
☠ American Beauty. 4 ft. Richest colored Canna. Oriental carmine .....	\$ 6.00	\$50.00
☠ Antoine Wintzer. 4 ft. Mr. Wintzer's favorite red. (Page 24) .....	50.00	
☠ Apricot. 4 ft. Rich apricot; durable .....	6.00	50.00
☠ City of Portland. 3 ft. Pink bedder .....	8.00	75.00
☠ Commander Byrd. 4 ft. New near white (Page 24) .....	50.00	
☠ Copper Giant. 4 ft. Madder red and old rose .....	10.00	90.00
☠ Cupid. 3 ft. Fascinating lilac rose .....	10.00	90.00
☠ Delicious. 3½ ft. New 1927. Lemon-yellow dotted old rose .....	10.00	90.00
☠ Flag of Truce. 4 ft. Cream white; pink dots .....	8.00	75.00
☠ Gold Bank. 4 ft. New 1927. Rich coppery gold .....	10.00	90.00
☠ Golden Wedding. 3 ft. Finest dwarf yellow .....	10.00	90.00
☠ Hollywood. 4 ft. New 1927. Outstanding color. Orange pink .....	12.00	100.00
☠ Honolulu. 3 ft. New 1927. Bronze leaf City of Portland .....	10.00	90.00
☠ King Humbert. 4 ft. Orange. Red leaf .....	6.00	50.00
☠ King Midas. 5 ft. The <i>Gold Canna</i> .....	8.00	75.00
☠ Laird's Favorite. 4 ft. Orange yellow .....	10.00	90.00
☠ Louis Cayeux. 4 ft. Giant rosy scarlet .....	10.00	90.00
☠ Mohawk. 5 ft. A bronze leaved <i>President</i> .....	6.00	50.00
☠ Montezuma. 3½ ft. New 1927. Very rich red. Bronze leaf .....	12.00	100.00
☠ Mrs. Alfred Conard. 4 ft. The favorite old pink .....	8.00	
☠ Mrs. Herbert Hoover. 4 ft. New watermelon pink (Page 24) .....	100.00	
☠ Mrs. Pierre S. du Pont. 4 ft. Queen of bright pinks (Page 24) .....	25.00	
☠ Nokomis. 5 ft. Crimson. Bronze leaf .....	6.00	50.00
☠ Palm Beach. 3½ ft. Rivals orchids. Maize yellow .....	6.00	50.00
☠ Razzle Dazzle. 4 ft. Dazzling crimson-maroon and yellow .....	8.00	75.00
☠ Snow Queen. 4 ft. White in mass; pink dots .....	10.00	90.00
☠ Statue of Liberty. 6 ft. Flame red. Bronze leaf .....	6.00	50.00
☠ Susquehanna. 3 ft. Old rose bedder .....	6.00	50.00
☠ The Ambassador. 5 ft. Like <i>Mohawk</i> .....	8.00	75.00
☠ The President. 4 ft. Most popular red .....	6.00	50.00
☠ Victory. 3 ft. Improved <i>Apricot</i> .....	6.00	50.00
☠ Vulcan. 3 ft. Cardinal red; ebony stems .....	6.00	50.00
☠ Wintzer's Colossal. 5 ft. <i>Big</i> vivid scarlet .....	6.00	50.00
☠ Wyoming. 7 ft. Orange. Purple leaf .....	6.00	50.00

Varieties marked ☠ introduced by The Conard-Pyle Company

# WHOLESALE PRICE-LIST

SPRING, 1931

## Of Mutual Interest

This list cancels all previous quotations, and the terms and conditions shown will apply for Spring, 1931, in all offers to the trade.

**The prices** printed in this list are based upon present market conditions, and are for immediate acceptance, subject to change without notice and stock being unsold. All goods are offered f. o. b. West Grove, Penna.; **packing extra** at cost or **free for cash before shipment**. **250 of a kind are offered at the 1,000 rate and 25 of a kind at the 100 rate.**

**Orders are booked** with the understanding that they shall become void should injury befall the stock from flood, error in count, drought, fire, or other causes beyond our control.

**Shipments** travel at purchaser's risk and in the absence of definite instructions from the buyer, stock will be forwarded according to our best judgment without assuming responsibility.

**Claims**, if any, must be made immediately on receipt of goods.

**Terms** cash, except to those with established credit, who may have the benefit of 60 days net from date of invoice.

**Every effort is made to keep varieties true to name** and, on proper proof, any not true will be replaced promptly; but the success of the grower is not guaranteed. In event of untrue stock, our liability must be limited to invoice value at time of shipment.

**Copy of Pennsylvania State Certificate of Inspection on all orders.**

**Correspondence** from prospective buyers is invited, but all communications should be written on printed business stationery so that trade prices can be granted to only those individuals or firms actually entitled to receive them.

**The plant names used** in this list conform, for the most part, with "Standardized Plant Names," adopted by The American Joint Committee on Horticultural Nomenclature.

**Member** American Association of Nurserymen, Eastern Nurserymen's Association, Pennsylvania Nurserymen's Association, etc.

## THE CONARD-PYLE COMPANY

ROBERT PYLE, *President* WEST GROVE, PA.

R. T. SATTERTHWAIT, *Vice-President*

E. P. GROFF, *Secretary-Treasurer*

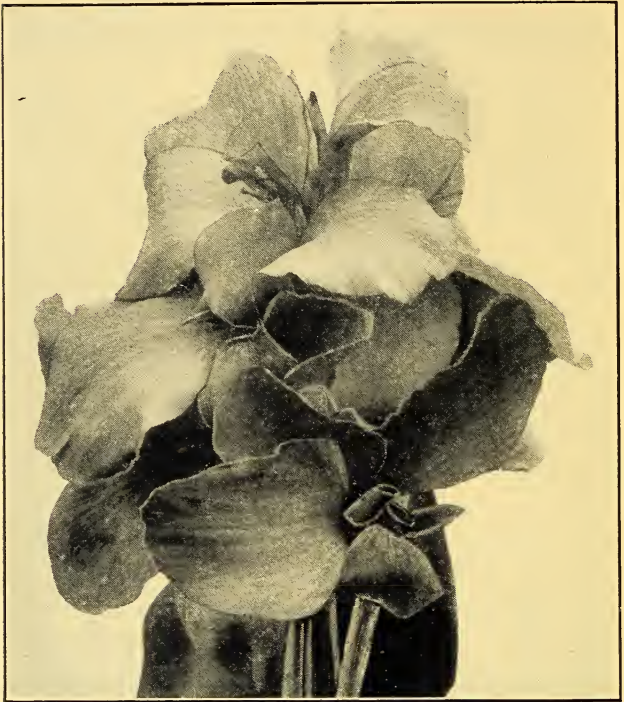


## Mushrooms and Roses

*Southeastern Pennsylvania is noted for its "Garden Spot" soil, and West Grove is the heart of a section famous because of having served such outstanding American plantsmen as John Bart-ram, Humphrey Marshall, George Pierce, Pierce Hoopes, Alfred Conard and Antoine Wintzer.*

*Practically 90% of the world's mushrooms are produced in the immediate vicinity of THE CONARD-PYLE COMPANY, and manure from the mushroom houses assists very materially in producing nursery stock strong in quality.*





The new Canna, Mrs. Herbert Hoover

Reap rich rewards from this set of royal-blooded new **☸** "Good Luck" CANNAS

**☸ MRS. HERBERT HOOVER**

Firm-petaled giant flowers of luscious watermelon pink, ten to fifteen blooms each head, one crop of bloom closely followed by another, serve to make this new Canna an outstanding, continuous pageant of beauty.

Dormant roots: 10 for \$11; 100 for \$100

**☸ ANTOINE WINTZER**

Mr. Wintzer himself chose this Canna as his favorite red; it is the most gorgeous, dazzling crimson color yet brought forth.

Dormant roots: 10 for \$6; 100 for \$50

**☸ COMMANDER BYRD**

Richard Evelyn Byrd has won promotion and leadership, and his namesake deserves popularity as one of the best near-white Cannas yet produced.

Dormant roots: 10 for \$6; 100 for \$50

**☸ MRS. PIERRE S. du PONT**

For sheer beauty this Queen of bright pink Cannas is unequalled. The individual flowers are very large, hold up well in hot sun, and are produced steadily until frost.

Dormant roots: 10 for \$3; 100 for \$25

**4** { Above four royal-blooded new **☸** CANNAS, one each for your display plot } **\$ 3** Post-paid

For other **☸** CANNAS at new low prices consult Page 22







