

# CATALOGUE



ONE • HUNDRED • AND • FIRST  
ANNUAL • EXHIBITION • OF • THE  
PENNSYLVANIA • ACADEMY • OF • THE  
FINE • ARTS • • JANUARY • 22 • MARCH • 3

1 • 9 • 0 • 6



R. POWELL

G. M. STRAD

ART  
IN  
BONBONS  
AND  
LUNCHEONS



Have You Visited the  
**ACKER QUALITY SHOP**  
Chestnut and Twelfth Streets?

**Paintings by  
American Artists**

CHOICE EXAMPLES ALWAYS ON VIEW

ALSO

**VOLKMAR POTTERY**

A FINE SELECTION

**WILLIAM MACBETH**

237 FIFTH AVE., NEW YORK

N. E. MONTROSS

WORKS OF ART

PICTURES BY

THOMAS W. DEWING    JOHN LA FARGE  
CHILDE HASSAM        ALBERT P. RYDER  
ALEX. SCHILLING       DWIGHT W. TRYON  
HORATIO WALKER

MONTROSS GALLERY

372 FIFTH AVENUE

CORNER OF 35th STREET

NEW YORK

We are Agents for the Famous

# Bondurant Frères Olive Oil

Nowhere else can it be had

Quart Bottles, 75c.

Pint Bottles, 40c.

Half-pint Bottles, 25c.

It is the highest Grade. It is Strictly  
Pure. Its Flavor cannot be equalled

## Showell & Fryer, Ltd.

DEPENDABLE GROCERS

MARKET AND JUNIPER STREETS

*Send for New Priced Catalogue*

---

### MAX WILLIAMS

*Rare Engravings      Fine Etchings*  
*Sporting Prints*

---

Old Views of Philadelphia, and New York,  
etc., a Specialty ✨ Correspondence Invited.  
Collections bought and sold    ✨    ✨    ✨

---

437 Fifth Avenue

Between 38th and 39th

NEW YORK

# ROBERT C. VOSE

## *Paintings*



EARLY ENGLISH

BARBIZON

AMERICAN

MODERN DUTCH



320 BOYLSTON STREET,  
BOSTON, MASS.

---

OLD FRAMES RE-GILT

OIL PAINTINGS RESTORED

## Art Gilding Company...

*JOHN P. CASSIDY, Manager.*

Frame and Furniture Gilder

DEALER IN

Oil Paintings, Etchings, Water Colors, &c.

1312 Filbert Street, Philadelphia.

*Packing and Shipping attended to.*



**"Old Masters"**

*(exclusively)*

at

**The Ehrich  
Galleries**

**No. 8 West 33rd St.**

*(Near Fifth Avenue)*

**New York**

EXPERT OPINION GIVEN AS TO ANTIQUE PAINTINGS

---

**THE ROSENBACH GALLERIES**

---

Ancient and Modern Paintings and Prints

Rare Books    Objects of Art

---

1320 WALNUT ST., PHILADELPHIA

---

**McCLEES GALLERIES**

HIGH CLASS PAINTINGS

ENGRAVINGS

WATER COLORS

**1411 WALNUT STREET**

OPPOSITE BELLEVUE-STRATFORD

# THE BERLIN PHOTOGRAPHIC CO.

---

---

**H**AVE just published their new catalogue, containing about 400 illustrations of the best subjects of their well-known publications—high-class reproductions in Gravure, Facsimiles and Carbons, of famous paintings in European Galleries by Old and Modern Masters.

This catalogue—a little work of art in itself—is embellished with comments by a competent art critic, biographical notes, suggestions for decorating a home, etc., and will prove an indispensable reference-book to all lovers of art.

*A copy will be sent on receipt of 50c., which amount will be reimbursed on receipt of initial order.*

INQUIRIES PROMPTLY ACKNOWLEDGED

---

---

**Berlin Photographic Co.**  
14 East 23rd Street, Madison Square South  
NEW YORK

WILLIAM SHEWELL ELLIS

1623 CHESTNUT STREET  
PHILADELPHIA  
BELL PHONE

PHOTOGRAPHIC STUDIO

---

THE HALF-TONE ILLUSTRATIONS

In this Catalogue are from

ORTHOCHROMATIC PHOTOGRAPHS

MADE BY

W. N. JENNINGS

PHOTOGRAPHY

1305 ARCH STREET

---

ARTISTIC FRAMING

Fine Gold Frames for Portraits,  
Oils, Water-colors, etc.  
Regilding a Specialty

ALBERT C. LÖWE, Inc.

8 SOUTH TENTH STREET

---

*THE BECK ENGRAVING CO. INC.*

*147-49-51 NORTH TENTH STREET*

*PHILADELPHIA*

FAC-SIMILE REPRODUCTIONS OF PAINTINGS AND  
DRAWINGS IN COLOR, FINE HALF TONES  
AND LINE ETCHINGS



The New Haseltine Galleries

1822 Chestnut Street

Philadelphia

---

NOW ON VIEW, AN EXTRAORDINARY COLLECTION OF EUROPEAN AND AMERICAN

## Paintings

---

EVERYTHING CONNECTED WITH THE FINE ART BUSINESS IS ATTENDED TO, INCLUDING RELINING AND RESTORING PAINTINGS, MAKING AND REGILDING FRAMES, ETC.

## ARTISTIC FRAMING



AT MODERATE PRICES. AN IMMENSE VARIETY OF PICTURES FOR REFINED HOMES. MANY ARE RARE, ALL ARE BEAUTIFUL! **FRAMES REGILDED.**



**SCHEIBAL'S** ART SHOP  
16 N. 9th St.

## LINDSAY'S GALLERIES

---

Walnut &  
Eleventh Streets

¶ Monthly Exhibitions of Paintings by Masters of the Dutch, French, English, and American Schools.

¶ Rare "Color" Prints, Etchings, Water-Colors, and Engravings.

The purpose of the Schools of the Pennsylvania Academy of the Fine Arts is, as it has always been, the training of professional painters and sculptors. The success achieved by the Schools is testified to by the number of artists of great reputation who received their training in them.

The present instructors are: Thomas P. Anshutz, William M. Chase, Cecilia Beaux, Charles Grafly, Hugh H. Breckenridge, Henry McCarter, Henry R. Poore, George McClellan, M.D., Frank Miles Day, and Paul Phillippe Crêt.

Detailed information in regard to the Schools will gladly be furnished to any one interested in the subject.

THE PENNSYLVANIA  
ACADEMY OF THE FINE ARTS  
FOUNDED 1805



CATALOGUE OF THE  
101ST ANNUAL EX-  
HIBITION, JANUARY 22  
TO MARCH 3, 1906

THIRD EDITION

PHILADELPHIA  
M D C C C C V I

MANAGEMENT OF THE PENNSYLVANIA  
ACADEMY OF THE FINE ARTS

PRESIDENT,

EDWARD H. COATES.

DIRECTORS,

E. BURGESS WARREN,  
JOHN H. PACKARD, M.D.,  
HENRY WHELEN, JR.,  
JOHN H. CONVERSE,  
THEOPHILUS P. CHANDLER,  
HERBERT M. HOWE, M.D.,

GEORGE H. MCFADDEN,  
CLEMENT B. NEWBOLD,  
EDWARD T. STOTESBURY,  
ROBERT C. H. BROCK,  
THEODORE N. ELY,  
JOHN F. LEWIS.

TREASURER,

HENRY WHELEN, JR.

SECRETARY AND MANAGER,

JOHN E. D. TRASK.

HONORARY CURATOR OF PRINTS,

JOHN F. LEWIS.

SOLICITOR,

JOHN G. JOHNSON.

COMMITTEE ON EXHIBITIONS,

E. BURGESS WARREN, CHAIRMAN,  
JOHN H. PACKARD, M.D., CLEMENT B. NEWBOLD,  
GEORGE H. MCFADDEN, EDWARD T. STOTESBURY.

JURY OF SELECTION AND HANGING COMMITTEE  
FOR THE 101ST ANNUAL EXHIBITION

Painting.

JOHN LAMBERT, CHAIRMAN.

HUGH H. BRECKENRIDGE,	FRANK VINCENT DUMOND,
THOMAS EAKINS,	WILLARD L. METCALF,
JOSEPH T. PEARSON,	J. ALDEN WEIR,
EDWARD W. REDFIELD,	CHARLES HOPKINSON,
CHARLES C. CURRAN,	WILTON LOCKWOOD,
EDMUND C. TARBELL.	

Sculpture.

CHARLES GRAFLY,	H. A. MACNEIL,
PAUL W. BARTLETT.	

Hanging Committee.

JOHN LAMBERT,	CHARLES C. CURRAN,
EDWARD W. REDFIELD,	FRANK VINCENT DUMOND.

Paris Jury.

The selection of Pictures by American artists in Europe was in the hands of the following Jury :

WALTER MACEWEN,	CHARLES MORRIS YOUNG,
HENRY O. TANNER.	

AWARDS OFFERED TO EXHIBITORS BY  
THE ACADEMY OF THE FINE ARTS



TEMPLE FUND  
AND MEDAL.

The Temple Trust Fund, created by the late Joseph E. Temple, yields an annual income of Eighteen Hundred Dollars for the purchase of works of American art at the discretion of the Directors of the Academy and for the issue of a gold medal by the Painters' Jury of Selection. The competition is open to all American Artists.

WALTER  
LIPPINCOTT  
PRIZE.

The Walter Lippincott Prize of Three Hundred Dollars, with an option on the part of the founder to purchase the painting chosen, will be awarded for the thirteenth time. The conditions governing the award for this exhibition are: that the picture selected shall be, all its qualities considered, the best Marine painting in oil by an American citizen, and that Mr. Lippincott shall have the option, for one week after the announcement of the award, of purchasing the chosen painting at the price named by the Artist in the memorandum of entry.

MARY SMITH  
PRIZE.

The Mary Smith Prize of One Hundred Dollars, founded by the late Russell Smith, will this year be awarded by the Exhibition Committee for the twenty-eighth time. According to the modified terms, the prize will be awarded: to the Painter of the best painting (not excluding portraits) in oil or water colors exhibited at the Academy, painted by a resident woman Artist, for qualities ranking as follows: 1st, Originality of Subject; 2d, Beauty of Design or Drawing; 3d, Color and Effect; and, lastly, Execution. The Academy will have no claim on the painting. The same Artist may not receive the prize twice in succession, nor more than twice in all.

GOLD MEDAL  
OF THE  
ACADEMY.

The Gold Medal of the Pennsylvania Academy of the Fine Arts, founded in 1893 by John H. Converse, Esq., will be at the disposal of the Academy. It will be awarded, at the discretion of the Board of Directors, in recognition of high achievement in their profession, to American Painters and Sculptors who may be exhibitors at the Academy or represented in the permanent collection, or who, for eminent services in the cause of art or to the Academy, have merited the distinction.

JENNIE SESNAN  
GOLD MEDAL.

The Jennie Sesnan Prize, a Gold Medal endowed by Miss Elizabeth W. Roberts, will this year be available for the fourth time. The medal will be awarded by the Painters' Jury of Selection, for the best landscape in the Exhibition, but the Jury may withhold the prize if in its judgment no work should merit it.

HONORS AWARDED BY  
THE TEMPLE FUND

From 1884 until 1890 the Temple Gold Medal was awarded by the Directors of the Academy to the best figure picture ; and the Temple Silver Medal to the best landscape and marine. In 1891 and 1892 the medals were awarded by the Jury of Selection and Hanging Committee of Artists to the best and second-best pictures, irrespective of subject. From 1893 to 1899 two Gold Medals were awarded annually. For the years 1900 to 1905 one Gold Medal was awarded, and for the present year there will be one Gold Medal.

TEMPLE GOLD MEDAL.	1884.	George W. Maynard.
	1885.	Charles Sprague Pearce.
	1887.	Clifford Provost Grayson.
	1888.	Charles Stanley Reinhart.
	1889	Anna Elizabeth Klumpke.
	1890.	William Henry Howe.
	1891.	Abbott H. Thayer.
	1892.	Henry S. Bisbing.
	1893.	No Exhibition.
	1894.	James A. McNeill Whistler.
	1894.	John S. Sargent.
	1895.	Edmund C. Tarbell.
	1895.	John H. Twachtman.
	1896.	Gari Melchers.
	1896.	J. Humphreys Johnston.
	1897.	George De Forest Brush.
	1897.	John W. Alexander.
	1898.	Wilton Lockwood.
	1898.	Edward F. Rook.
1899.	Joseph De Camp.	
1899.	Childe Hassam.	
1900.	Cecilia Beaux.	
1901.	William M. Chase.	
1902.	Winslow Homer.	
1903.	Edward W. Redfield.	
1904.	Thomas Eakins.	
1905.	J. Alden Weir.	
1906.	Eugene Paul Ullman.	



TEMPLE SILVER  
MEDAL.

- 1883. William Thomas Trego.
- 1884. Thomas Hill.
- 1885. William T. Richards.
- 1887. Alexander Harrison.
- 1888. Howard Russell Butler.
- 1889. Arthur Parton.
- 1890. Edward L. Simmons.
- 1891. Kenyon Cox.
- 1892. George Inness.

AWARDS OF THE  
WALTER LIPPINCOTT PRIZE

Founded in 1894 by Walter Lippincott, Esq.

- 1894. William Sergeant Kendall.
- 1895. Edmund C. Tarbell.
- 1896. William L. Picknell.
- 1897. Albert Herter.
- 1898. James Jebusa Shannon.
- 1899. John W. Alexander.
- 1900. Henry O. Tanner.
- 1901. Charles H. Davis.
- 1902. Walter MacEwen.
- 1903. Frank W. Benson.
- 1904. Mary Cassatt.
- 1905. Alexander Stirling Calder.
- 1905. T. W. Dewing.
- 1906. Childe Hassam.

AWARDS OF THE ACADEMY  
GOLD MEDAL OF HONOR

Founded in 1893 by John H. Converse, Esq., of the Board  
of Directors of the Academy.

- 1893. D. Ridgway Knight.
- 1894. Alexander Harrison.
- 1895. William M. Chase.
- 1896. Winslow Homer.
- 1898. Edwin A. Abbey.
- 1898. Cecilia Beaux.
- 1899. Charles Grafly.
- 1901. Henry J. Thouron.
- 1902. James A. McNeill Whistler.
- 1903. John S. Sargent.
- 1904. John W. Alexander.
- 1905. William T. Richards.
- 1905. Violet Oakley.

AWARD OF THE WILLIAM  
L. ELKINS PRIZE OF \$5000

Contributed for the Sixty-Fifth Annual Exhibition by the late  
William L. Elkins.

1896. Abbott H. Thayer, \$3000.  
1896. Edmund C. Tarbell, \$2000.

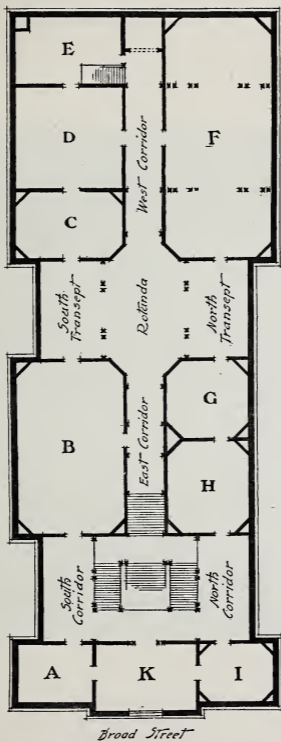
AWARDS OF THE  
MARY SMITH PRIZE

Founded in 1879 by the late Russell Smith, in memory of his  
daughter, Mary Smith.

1879. Susan H. MacDowell.  
1880. Catharine A. Janvier.  
1881. Emily Sartain.  
1882. Mary K. Trotter.  
1883. Emily Sartain.  
1884. Lucy D. Holme.  
1885. Cecilia Beaux.  
1886. No Exhibition.  
1887. Cecilia Beaux.  
1888. Elizabeth F. Bonsall.  
1889. Elizabeth W. Roberts.  
1890. Alice Barber Stephens.  
1891. Cecilia Beaux.  
1892. Cecilia Beaux.  
1893. No Exhibition.  
1894. Maria L. Kirk.  
1895. Gabrielle D. Clements.  
1896. Elizabeth H. Watson.  
1897. Elizabeth F. Bonsall.  
1898. Caroline Peart.  
1899. Carol H. Beck.  
1900. Mary F. R. Clay.  
1901. Janet Wheeler.  
1902. Elinor Earle.  
1903. Jessie Willcox Smith.  
1904. Lillian M. Genth.  
1905. Elizabeth Shippen Green.  
1906. Alice Mumford.

AWARDS OF THE  
JENNIE SESNAN GOLD MEDAL

1903. W. Elmer Schofield.  
1904. Colin C. Cooper.  
1905. Edward W. Redfield.  
1906. Albert L. Groll.



PLAN OF THE ACADEMY GALLERIES

## NOTE



The One Hundred and First Annual Exhibition of the Academy will be open to the public from Monday, January 22, to Saturday, March 3, 1906, inclusive.

Sundays, from 1 to 5 P. M.

Week-days, from 9 A. M. to 5 P. M.

Saturday Evenings, from 7.30 to 10.



PORTRAIT OF A GIRL. BY T. W. DEWING



THE YOUNG OAK. BY WILLARD L. METCALF



THE BLACK FAN. BY HOWARD GARDINER CUSHING



PORTRAIT OF A CHILD. BY CECILIA BEAUX





A VELE GONFIE. BY JOHN S. SARGENT



HAPPY DAYS. BY ELIZABETH NOURSE



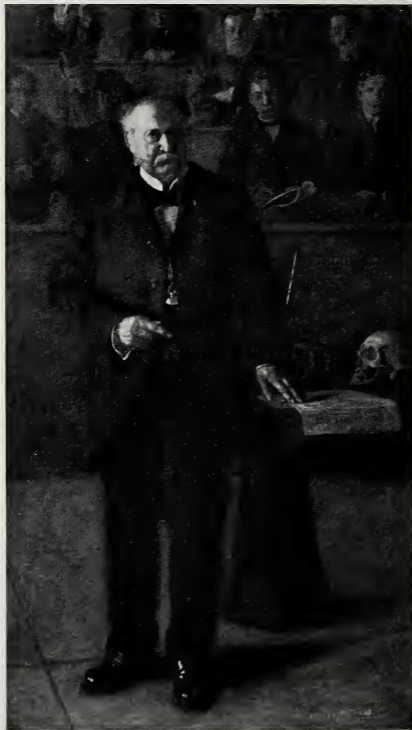
PORTRAIT OF MRS. C. R. C. AND CHILD. BY KARL BITTER



SAND DUNES NEAR LELANT. BY W. ELMER SCHOFIELD



THREE PORTRAITS. BY SERGEANT KENDALL



DR. WILLIAM SMITH FORBES. BY THOMAS EAKINS

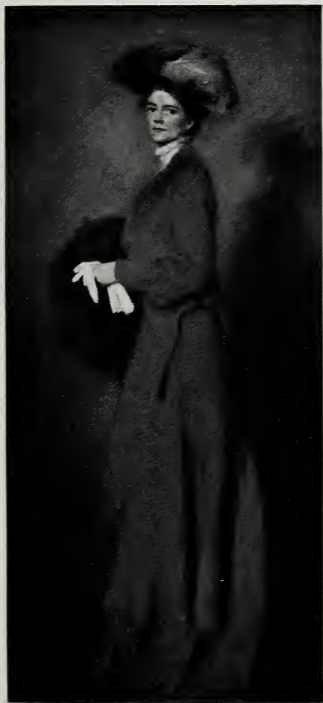


THE RIALTO. BY COLIN CAMPBELL COOPER

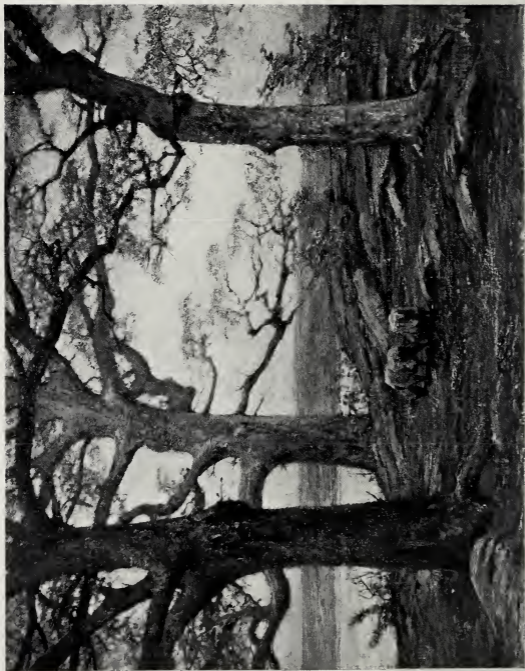


JERSEY FISHERMEN. BY H. L. HILDEBRANDT





MRS. RALPH ADAMS CRAM  
BY ADELAIDE COLE CHASE



EARLY APRIL. BY ALLEN B. TALCOTT



MODERN MADONNA. BY BESSIE POTTER VONNOH



HARE AND HOUNDS, BY H. M. WALCOTT



A GENTLEWOMAN. BY J. ALDEN WEIR



THE BARK. BY CHARLES H. WOODBURY



THE TRAGIC ACTOR. BY JOHN LAMBERT

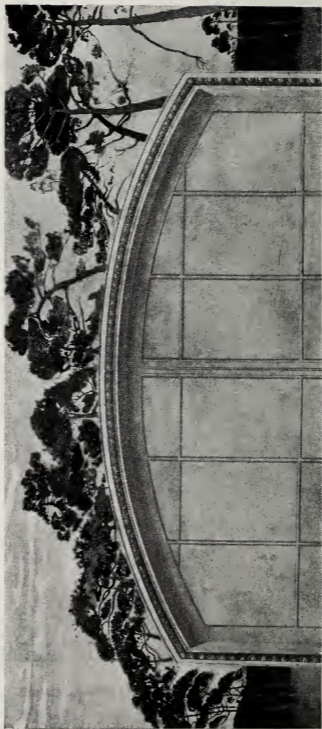


THE DAY'S WORK DONE. BY HENRY GOLDEN DEARTH





THE SISTERS. BY WILLIAM M. CHASE



BRITTANY PINES. BY FLORENCE ESTE



PORTRAIT OF JOSEPH HOLLMAN BY JULIAN STORY



THE BALLET, BY EVERETT SHINN



PORTRAIT OF MRS HARRY S. LEHR. BY JEAN BOLDINI



*Sept. 1912. By H. E. Matthews.*

PLOUGHING IN ACADIA. BY HORATIO WALKER



A HOLLAND LADY. BY GARI MELCHERS



THE NAUTILUS. BY HUGH H. BRECKENRIDGE





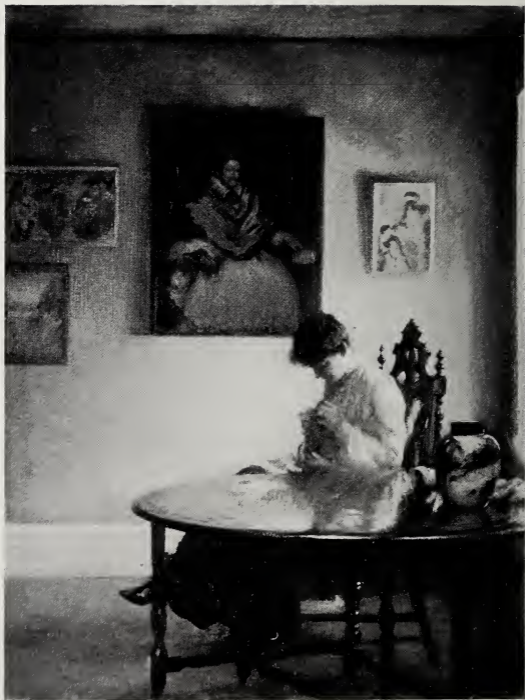
MOTHER AND CHILD. BY LOUISE COX



THE DELAWARE RIVER. BY EDWARD W. REDFIELD



THE YELLOW ROBE. BY WALTER MACEWEN



GIRL CROCHETING. BY EDMUND C. TARBELL

PAINTINGS IN OIL  
GALLERY F.



JOHN H. TWACHTMAN.

1 Sailing in the Mist.

FRANK W. BENSON.

2 Coasters in Harbor.

ROBERT REID.

3 Fleur de Lys.

GEORGE L. NOYES.

4 Afternoon Reflections, Annisquam.

CHARLES HOPKINSON.

5 Spray and Sunshine.

ROBERT REID.

6 The Brook.

LAWTON S. PARKER.

7 An English Girl.

EDUARD J. STEICHEN.

8 Nocturne of the Black Women: Screeching  
Birds.

*PAINTINGS IN OIL.*

---

ROBERT W. VONNOH.

9 Apple Bough.

GEORGE W. SOTTER.

10 Spring.

FRANK W. BENSON.

11 October.

PAUL DOUGHERTY.

12 Morning Sea Caprice.

Lent by Dr. Alexander C. Humphreys.

FREDERICK BALLARD WILLIAMS.

13 Sun and Shadow, Block Island.

JOSEPH DE CAMP.

14 In the Studio.

WILLARD D. PADDOCK.

15 The Passing of the Storm.

CHILDE HASSAM.

16 June Morning.

WILLIAM H. SINGER, JR.

17 Lane to Blaricum, Holland.

GARI MELCHERS.

18 A Holland Lady.

Lent by General Rush Hawkins.

MARY CASSATT.

19 In the Woods.

*PAINTINGS IN OIL.*

---

WILLIAM H. SINGER, JR.

20 Gray Day; Holland.

ADOLPHE BORIE.

21 Portrait of John W. Pepper, Esq.

WILLIAM OTIS SWETT, JR.

22 The Chateau.

ALBERT L. GROLL.

23 Arizona.

Awarded the Jennie Sesnan Medal.

LEONARD OCHTMAN.

24 Autumn Days.

JOHN S. SARGENT.

25 A Vele Gonfie; Portrait of Mrs. Robert M.  
Mathias.

Lent by A. Wertheimer, Esq.

GEORGE WETHERBEE.

26 Oh! What a Plague is Love.

W. ELMER SCHOFIELD.

27 Sand Dunes near Lelant.

CHARLES ROSEN.

28 Driftwood.

THOMAS EAKINS.

29 Portrait of John B. Gest, Esq.

Lent by Fidelity Trust Co.

*PAINTINGS IN OIL.*

---

GEORGE L. HERDLE.

30 Evening.

F. HUTTON SHILL.

31 St. Ives from the Harbor.

FRED WAGNER.

32 Excavation for Sky-scraper.

ROBERT HENRI.

33 Lady in Black.

WILLIAM M. CHASE.

34 Still Life.

FRED WAGNER.

35 Early Morning on Toms River.

EDMUND C. TARBELL.

36 Girl Crocheting.

Lent by Bela L. Pratt, Esq.

J. ALDEN WEIR.

37 The Haunt of the Woodcock.

HENRY GOLDEN DEARTH.

38 A Summer Night.

ETHELBERT BROWN.

39 Chateau Gaillard.

CECILIA BEAUX.

40 Portrait.

Lent by William Burnham, Esq.



*PAINTINGS IN OIL.*

---

CHARLES BITTINGER.

41 Council Chamber, Versailles.

L. M. GENTH.

42 The Seine, Paris.

CULLEN YATES.

43 Fallen Leaves and Misty Sky.

WILLIAM M. CHASE.

44 Portrait of Rev. Dr. Sparhawk Jones.

LOUIS PAUL DESSAR.

45 Moonlight.

Lent by George Arnold Hearn, Esq.

CHARLES H. WOODBURY.

46 The Bark.

CHARLES WARREN EATON.

47 On the Slope of the Mountain.

JOHN LAMBERT.

48 The Tragic Actor.

HORATIO WALKER.

49 Oxen Drinking. (1899.)

Lent by N. E. Montross, Esq.

CHAUNCEY F. RYDER.

50 The Potato Field.

*PAINTINGS IN OIL.*

---

HORATIO WALKER.

- 51 A Canadian Pastoral. (1888.)  
Lent by N. E. Montross, Esq.

HORATIO WALKER.

- 52 Boy Feeding Pigs. (1898.)  
Lent by N. E. Montross, Esq.

HORATIO WALKER.

- 53 Ploughing in Acadia. (1886.)  
Lent by N. E. Montross, Esq.

HORATIO WALKER.

- 54 The Wood Cutters. (1905.)  
Lent by N. E. Montross, Esq.

CULLEN YATES.

- 55 Late Autumn Morning.

THOMAS P. ANSHUTZ.

- 56 The Dutchman.

FRANK VINCENT DU MOND.

- 57 The Bathers.

WILLIAM S. HORTON.

- 58 Sheep Shearing; England.

HOWARD GARDINER CUSHING.

- 59 The Black Fan.

HARRY VAN DER WEYDEN

- 60 The Old Mills.

*PAINTINGS IN OIL.*

---

W. L. LATHROP.

61 Byway of a Village.

FLORENCE CARLYLE.

62\* A Jest Between Times.,

EDMUND C. TARBELL.

63 Miss Eleanor Hyde.

Lent by Mrs. Thomas S. Hyde.

CHARLES MORRIS YOUNG.

64 The Winter Stream.

ALEXANDER HARRISON.

65 Beg-Meil.

JOSEPH BENJAMIN DAVOL.

66 The Sea Pool.

JOSEPH DE CAMP.

67 Self-Portrait.

HARRY VAN DER WEYDEN.

68 Village by Moonlight.

ALLEN B. TALCOTT.

69 Early April.

EMILIE ZECKWER.

70 Child with Doll.

WILLIAM T. SMEDLEY.

71 Master Edward Darling Smedley.

*PAINTINGS IN OIL.*

---

LEWIS HERZOG.

72 Mackerel Boats.

WILLIAM KEITH.

73 Sunset, Sonoma Valley.

JOHN SLOAN.

74 Boy with Piccolo.

JULIAN STORY.

75 Portrait of Joseph Hollman.

ALBERT D. GIHON.

76 The Old Church on the Loing.

W. ELMER SCHOFIELD.

77 Autumn.

F. HUTTON SHILL.

78 Cooper's Point.

EDWARD W. REDFIELD.

79 The Crest.

LEWIS HERZOG.

80 Nantucket Dunes.

MARGARET FULLER.

81 Portrait.

ANNA FISHER.

82 Courtyard of San Gregorio.

*PAINTINGS IN OIL.*

---

JOHN F. WEIR.

83 A Summer Afternoon.

JOHN C. JOHANSEN.

84 After Rain. Chicago River.

J. ALDEN WEIR.

85 A Gentlewoman.

GEORGE W. SOTTER.

86 Ohio River.

JOSEPH T. PEARSON, JR.

87 Landscape.

EDUARD J. STEICHEN.

88 Spring; Opalescent Twilight.

DOUGLAS VOLK.

89 Pioneer Boy.

EVERETT L. BRYANT.

90 Woman Bathing.

WILLARD L. METCALF.

91 Spring Blossoms.

HARRY VAN DER WEYDEN

92 The River.

MARTHA S. BAKER.

93 In an Old Gown.

*PAINTINGS IN OIL.*

---

CLARENCE M. GIHON.

94 Summer Afternoon.

JOHN H. TWACHTMAN.

95 Niagara.

HENRY BOLLER PANCOAST, JR.

96 November Afternoon.

FRANK VINCENT DU MOND.

97 The Net Mender.

ARTHUR P. SPEAR.

98 On the Quay.

HENRY MCCARTER.

99 The Penitents.

JOSEPH T. PEARSON, JR.

100 Over the Hedge.

HUGH H. BRECKENRIDGE.

101 The Phlox Garden.

CHARLES H. DAVIS.

102 Uplands.

WILLIAM J. GLACKENS.

103 At Mouquin's.

CHARLES MORRIS YOUNG.

104 Winter Evening.

*PAINTINGS IN OIL.*

---

ERNEST LAWSON.

105 Boys Bathing.

MAURICE STERNE.

106 On the Piazza, Anzio, Italy.

COLIN CAMPBELL COOPER.

107 The "Rialto," New York.

Lent by The Lotus Club.

M. PETERSEN.

108 Snow.

# PAINTINGS IN NORTH TRANSEPT AND ROTUNDA



ROBERTSON K. MYGATT.  
151 A Wood Clearing.

AUGUSTUS KOOPMAN.  
152 The Last Kiss.

LOUIS LOEB.  
153 Morning.

F. LUIS MORA.  
154 Canciones y Refrescos.

AUGUSTUS KOOPMAN.  
155 Return of the Shrimp Catchers.

CHARLES WARREN EATON.  
156 Moonlight, the Bruges Canal.

ELIZABETH NOURSE.  
157 Happy Days.

GIFFORD BEAL.  
158 Last Kiss of the Sun



*PAINTINGS IN OIL.*

---

FLORENCE ESTÉ.

159 Brittany Pines.

Decorative panel made for the Academy  
Lecture Room.

CHARLES E. MILLS.

160 Andante: Cape Ann.

LOUIS AKIN.

161 After-glow: Grand Canyon.

HELEN DUNLAP HUNT.

162 The Studio Tea.

Lent by Mrs. David W. Hunt.

## GALLERY G.



EDMUND C. TARBELL.

201 The Golden Crescent.

GUY DU BOIS.

202 Wrestlers, Neuilly.

M. R. STURGIS.

203 Afternoon, Autumn.

GEORGE H. LEONARD, JR.

204 The Setting Sun, Etaples.

OLIVER AINSLEY.

205 By Lamplight. -

WILLIAM M. PAXTON.

206 The Shade Hat.

CHARLES MORRIS YOUNG.

207 The Mill Race, Winter.

CHILDE HASSAM.

208 Summer Morning, Isles of Shoals.

Awarded the Walter Lippincott Prize.

CHILDE HASSAM.

209 Rock Cliff, Appledore.

*PAINTINGS IN OIL.*

---

GEORGE L. NOYES.

210 Looking across the Cove.

E. M. COXE YOUNG.

211 Marine, Evening.

CARL NEWMAN.

212 Modesty.

HAROLD C. DUNBAR.

213 Evening in Autumn.

CARL NEWMAN.

214 Still Life.

ELIZABETH V. TAYLOR WATSON.

215 Portrait of Miss Jennie Leland.

CARL NEWMAN.

216 Plating the Hair.

B. K. HOWARD.

217 The Cedars, Mystic.

THEODORE WENDEL.

218 A Garden.

E. M. COXE YOUNG.

219 Rocks and Sea.

CHILDE HASSAM.

220 Summer Morning Sea.

*PAINTINGS IN OIL.*

---

CHILDE HASSAM.

221 At Sunset in the October Haze.

HOWARD GARDINER CUSHING.

222 Woman in Pink Satin.

FRED WAGNER.

223 Late Afternoon, Barnegat Bay.

DANIEL GARBER.

224 St. James' Park, London.

A. MOLARSKY.

225 Still Life.

ANNA STANLEY HOLBROOK.

226 The End of the Canal, Holland.

ALBERT WORCESTER.

227 The Peony.

ALEXANDER HARRISON.

228 Breakers.

ERNEST LAWSON.

229 The Hillside.

ELIZABETH CURTIS.

230 On York River.

ADELAIDE COLE CHASE.

231 Portrait of Mrs. Ralph Adams Cram.

Lent by Columbus Art Museum.

*PAINTINGS IN OIL.*

---

THEODORE WENDEL.

232 Ipswich Light.

THEODORE WENDEL.

233 Spring Rain.

SERGEANT KENDALL.

234 Three Portraits.

ALBERT WORCESTER.

235 Study of the Nude.

IDA J. BURGESS.

236 Cedar Point, Noank.

GEORGE CHARLES AID.

237 Harmony.

JOHN H. TWACHTMAN.

238 September Sunshine.

JOHN H. TWACHTMAN.

239 Summer.

J. ALDEN WEIR.

240 Midday.

W. L. LATHROP.

241 The Red Wheelbarrow

JOHN H. TWACHTMAN.

242 Summer Day.

*PAINTINGS IN OIL.*

---

ARTHUR M. HAZARD.

243 Reverie.

WILLIAM DE LEFTWICH DODGE.

244 The Sea.

ELLA S. HERGESHEIMER.

245 Still Life : Mushrooms.

ADELAIDE COLE CHASE.

246 June Roses.

ALICE MUMFORD.

247 Two Vaudeville Stars.

Awarded the Mary Smith Prize.

DANIEL GARBER.

248 Bridge at Kingston-on-Thames.

ADELAIDE COLE CHASE.

249 Garden Flowers.

HOWARD GARDINER CUSHING.

250 Woman in White.

FREDERICK J. WAUGH.

251 Moonlight.

GIFFORD BEAL.

252 The Cloud.

## GALLERY H.



JOHN LAMBERT.

301 Portrait of Miss Cecilia Beaux.

Lent by John Lambert.

W. GRANVILLE-SMITH.

302 An Old Freighter.

WINSLOW HOMER.

303 Long Branch.

Lent by Robert W. Vonnoh, Esq.

MARY FOOTE.

304 Portrait of Frederick MacMonnies.

LOUIS LOEB.

305 Siren.

PAUL DOUGHERTY.

306 No Man's Reef; Sou'west Weather.

Lent by Dr. Alexander C. Humphreys.

GEORGE M. BRUESTLE.

307 Landscape.

WALTER MAC EWEN.

308 Portrait of a Young Girl.

*PAINTINGS IN OIL.*

---

CHARLES C. CURRAN.

309 Peonies.

CLARA WEAVER PARRISH.

310 Roses.

CHARLOTTE B. COMAN.

311 A September Morning.

GUSTAVE WIEGAND.

312 The Snow of Spring.

ALFRED H. MAURER.

313 Gabrielle.

HERMANN DUDLEY MURPHY.

314 The Edge of the Hill.

S. EDWIN WHITEMAN.

315 Clouds and Shadows.

ROBERT H. NISBET.

316 In the Garden.

GEORGE DE FOREST BRUSH.

317 The Little Cavalier.

Lent by Mrs. Roland C. Lincoln.

MATILDA BROWNELL.

318 Still Life.



*PAINTINGS IN OIL.*

---

THOMAS EAKINS.

319. Right Rev. D. J. Dougherty, D.D., Bishop of  
New Segovia, Philippine Islands.

Lent by Mrs. Patrick Dougherty.

AIMÉ LÉON MEYVIS.

320 Toward Evening.

CECILIA BEAUX.

321 Portrait of Henry S. Drinker.

Lent by Mrs. Henry S. Drinker.

EDWARD DUFNER.

322 Early Evening Light.

HENRY B. SNELL.

323 English Cottages.

CLARA WEAVER PARRISH.

324 Savona.

JOSEPH DE CAMP.

325 La Penserosa.

EARL H. BREWSTER.

326 Moonrise, April Evening.

H. O. TANNER.

327 Christ Washing the Disciples' Feet.

ALFRED W. SCHWARTZ.

328 Kingston Point, Grey Day.

*PAINTINGS IN OIL.*

---

FRED W. MEYVIS.

329 Mending.

COLIN CAMPBELL COOPER.

330 Trinity Church, New York.

MARY BUTLER.

331 The End of the Island.

JOHN LAVERY.

332 Miss Groome.

Lent by H. C. Groome, Esq.

WILLIAM H. SINGER, JR.

333 October, Holland.

J. ALDEN WEIR.

334 After the First Frost.

BIRGE HARRISON.

335 The Evening Star.

MARY CASSATT.

336 Mother and Child.

EDWIN SCOTT.

337 St. Germain des Pris.

HENRY B. SNELL.

338 Polperro.

H. L. HILDEBRANDT.

339 Jersey Fishermen.

*PAINTINGS IN OIL.*

---

IRVING R. WILES.

340 Mrs. Wiles and Miss Gladys Wiles.

EDWARD W. REDFIELD.

341 The Delaware River.

EDWIN SCOTT.

342 Paris Street Scene.

THOMAS P. ANSHUTZ.

343 Portrait.

A. MOLARSKY.

344 In the Café.

EMIL CARLSEN.

345 Night, Old Windham.

GEORGE OBERTEUFFER.

346 Chezy-sur-Marne.

CHARLES C. CURRAN.

347 A Deep Sea Fantasy.

EMILIE ZECKWER.

348 Study of a Head.

ALBERT WORCESTER.

349 The Cup of Tea.

CHARLES J. TAYLOR.

350 The Bay Settlement.

*PAINTINGS IN OIL.*

---

WILLIAM M. CHASE.

351 August B. Loeb, Esq.

JULES TURCAS.

352 Oxen in Sunlight.

## NORTH CORRIDOR.



FRANK B. A. LINTON.

400 Portrait of Dr. Matthew Woods.

HENRY R. POORE.

401 The Silence of Winter.

HENRY L. SAWE.

402 Fleurs de Pommiers.

THOMAS EAKINS.

403 Dr. William Smith Forbes.

Lent by Jefferson Medical College.

FRANK R. WADSWORTH.

404 Landscape.

HARRY L. HOFFMAN.

405 Morning on the Quai d'Austerlitz, Paris.

WILLIAM RITSCHEL.

406 Katwijk Strand.

CHARLES W. HAWTHORNE.

407 Fisher Boy.

*PAINTINGS IN OIL.*

---

JOHN SLOAN.

408 Girl in White.

EVERETT SHINN.

409 The Ballet.

JEROME MYERS.

410 Recreation Pier.

WILLIAM M. CHASE.

411 The Sisters.

Lent by James F. Sullivan, Esq.

WILL HOWE FOOTE.

412 The Cry of the Whip-poor-will.

MAY WILSON PRESTON.

413 At the End of the Mall.

CECILIA BEAUX.

414 Portrait of a Child.

Lent by H. P. King, Esq.

CHARLES H. WOODBURY.

415 The North Atlantic.

GERTRUDE PARTINGTON.

416 The Merry Faun.

WILLIAM S. ROBINSON.

417 November Landscape.

*PAINTINGS IN OIL.*

---

J. C. MAGEE.

418 The Bay.

JEAN BOLDINI.

419. Portrait of Mrs. Harry S. Lehr.

Lent by Mrs. Harry S. Lehr.

HUGH H. BRECKENRIDGE.

420 The Nautilus.

LUCIEN W. POWELL.

421 Afterglow: Grand Canyon, Arizona.

## GALLERY I.



D. W. TRYON.

431 **Twilight, May.**

Lent by Charles L. Freer, Esq.

D. W. TRYON.

432 **New England Hills.**

Lent by Charles L. Freer, Esq.

D. W. TRYON.

433 **The Evening Star.**

Lent by Charles L. Freer, Esq.

D. W. TRYON.

434 **An Evening in May.**

Lent by Buffalo Fine Arts Academy.

D. W. TRYON.

435 **The Farm: October Night.**

Lent by Col. Frank J. Hecker.

T. W. DEWING.

436 **The Lute Player.**

Lent by Charles L. Freer, Esq.

T. W. DEWING.

437 **Portrait of a Girl.**

Lent by Charles L. Freer, Esq.



*PAINTINGS IN OIL.*

---

T. W. DEWING.

438 **The Fortune-Teller.**

Lent by W. K. Bixby, Esq.

T. W. DEWING.

439 **Portrait of a Young Lady in a Gray Dress.**

T. W. DEWING.

440 **Spanish Girl.**

Lent by W. K. Bixby, Esq.

ABBOTT H. THAYER.

441 **Monadnock.**

Lent by Charles L. Freer, Esq.

ABBOTT H. THAYER.

442 **Capri.**

Lent by Charles L. Freer, Esq.

ABBOTT H. THAYER.

443 **Head.**

Lent by Charles L. Freer, Esq.

J. MCNEILL WHISTLER.

444 **The Little Blue and Gold Girl.**

Lent by Charles L. Freer, Esq.

J. MCNEILL WHISTLER.

445 **Nocturne: Blue and Silver, Bognor.**

Lent by Charles L. Freer, Esq.

J. MCNEILL WHISTLER.

446 **Nocturne: Blue and Silver, Battersea Reach.**

Lent by Charles L. Freer, Esq.

## PICTURES IN GALLERY K.



JESSIE WILLCOX SMITH.  
451 The First Dissipation.

JESSIE WILLCOX SMITH.  
452 The First Love.

JESSIE WILLCOX SMITH.  
453 The First Punishment.

ANITA LEROY.  
454 Concarneau : Brittany.

ANITA LEROY.  
455 Fouesnant : Brittany.

JESSIE WILLCOX SMITH.  
456 The First Sermon.

JESSIE WILLCOX SMITH.  
457 Illustration ; Child's Garden of Verses.

JESSIE WILLCOX SMITH.  
458 The First Lesson.

JESSIE WILLCOX SMITH.  
459 Illustration ; Child's Garden of Verses.

*PAINTINGS.*

---

MAXFIELD PARRISH.

460 Cover Design.

MAXFIELD PARRISH.

461 Illustration to Rawhide.

MAXFIELD PARRISH.

462 Christmas Cover Design.

MAXFIELD PARRISH.

463 Illustration to Rawhide.

MAXFIELD PARRISH.

464 Cover Design.

MAXFIELD PARRISH.

465 Illustration to Rawhide.

ELIZABETH SHIPPEN GREEN.

466 The Window-garden.

ELIZABETH SHIPPEN GREEN.

467 Candle-light.

ELIZABETH SHIPPEN GREEN.

468 The Green Singing-book.

ELIZABETH SHIPPEN GREEN.

469 Afternoon Tea.

ELIZABETH SHIPPEN GREEN.

470 The Five Little Pigs.

*PAINTINGS.*

---

ELIZABETH SHIPPEN GREEN.

471 The Library.

JOHN MCLURE HAMILTON.

472 Portrait of William T. Richards.

ELLEN MACAULEY.

473 At the Cockcrowing.

ELIZABETH SHIPPEN GREEN.

474 Playtime.

ELIZABETH SHIPPEN GREEN.

475 The Rose-garden.

ELIZABETH SHIPPEN GREEN.

476 The Sewing-room.

ELIZABETH SHIPPEN GREEN.

477 Making Pictures.

ELIZABETH SHIPPEN GREEN.

478 My Lady of the Stairs.

ELIZABETH SHIPPEN GREEN.

479 The Dreamer.

CHARLOTTE HARDING.

480 Illustration for Jock and Joan : Playmates.

CHARLOTTE HARDING.

481 Illustration for Jock and Joan : Playing.

*PAINTINGS.*

---

CHARLOTTE HARDING.

482 Illustration for Jock and Joan : Grandma's.

CHARLOTTE HARDING.

483 Illustration for Jock and Joan : Speculation.

CHARLOTTE HARDING.

484 Illustration for Jock and Joan : Algy.

CHARLOTTE HARDING.

485 Illustration for Jock and Joan : Cover Design.

CHARLOTTE HARDING.

486 Illustration for Jock and Joan : The Cow.

ANITA LEROY.

487 Marken Children.

JESSIE WILLCOX SMITH.

488 Illustration ; Child's Garden of Verses.

JESSIE WILLCOX SMITH.

489 Illustration ; Child's Garden of Verses.

JESSIE WILLCOX SMITH.

490 Illustration ; Child's Garden of Verses.

JESSIE WILLCOX SMITH.

491 Illustration ; Child's Garden of Verses.

JESSIE WILLCOX SMITH.

492 Illustration ; Child's Garden of Verses.

*PAINTINGS.*

---

JESSIE WILLCOX SMITH.

493 Illustration ; Child's Garden of Verses.

JESSIE WILLCOX SMITH.

494 Illustration ; Child's Garden of Verses.

ANITA LEROY.

495 Quimper : Brittany.

ANITA LEROY.

496 Pont L'abbé : Brittany.

WILLIAM M. PAXTON.

497 Sisters.

FRED DANA MARSH.

498 Bridge-building.

## GALLERY A.



ALEXANDER HARRISON.

501 Haloe.

THOMAS EAKINS.

502 Portrait of a Lady.

ARTHUR B. DAVIES.

503 The Dodona Grove.

F. DEHAVEN.

504 October Evening.

ARTHUR B. DAVIES.

505 Invocation to Autumn.

ARTHUR B. DAVIES.

506 Golden Stream.

EDWARD F. ROOK.

507 Fountain; Borda Garden, Mexico.

THEODORE EARL BUTLER.

508 On the Normandy Coast.

EDWARD F. ROOK.

509 Landscape.

*PAINTINGS IN OIL.*

---

CARROLL S. TYSON, JR.

510 *Somes Sound: Mt. Desert.*

DANIEL GARBER.

511 *Group of Houses: April.*

ANNA FISHER.

512 *Street in Venice.*

FREDERIC P. VINTON.

513 *John Harsen Rhoades.*

Lent by The Greenwich Savings Bank.

WILLIAM M. CHASE.

514 *Still Life.*

AUGUSTUS KOOPMAN.

515 *The Village Circus.*

WILLIAM M. CHASE.

516 *Portrait of Miss Frances V. Earle.*

Lent by George H. Earle, Jr., Esq.

MAURICE STERNE.

517 *Entrance of the Ballet.*

W. W. GILCHRIST, JR.

518 *Still Life.*

JOHN LAMBERT.

519 *Portrait of Miss B.*



*PAINTINGS IN OIL.*

---

WILLIAM M. CHASE.

520 Landscape.

CHARLES AUSTIN NEEDHAM.

521 A New York Thoroughfare.

EVERETT L. WARNER.

522 Old Houses in Montreuil-sur-Mer.

JULIUS GOLZ, JR.

523 After the Concert.

CHARLES HOPKINSON.

524 Portrait.

HERMANN DUDLEY MURPHY.

525 The Little Cloud.

BENJAMIN EGGLESTON.

526 Mists of Early Morning.

C. MYLES COLLIER.

527 Zweindrecht, Holland.

JOHN S. SARGENT.

528 Portrait of Mrs. C. B. Alexander.

Lent by C. B. Alexander, Esq.

GUSTAVE WIEGAND.

529 Mysterious Night.

FRANK REED WHITESIDE.

530 Night.

*PAINTINGS IN OIL.*

---

FRANK W. BENSON.

531 **Three Sisters.**

HERMANN DUDLEY MURPHY.

532 **The Shower at Sunset.**

EDWARD W. REDFIELD.

533 **Laurel Road.**

JOSEPH BENJAMIN DAVOL.

534 **Sand Dunes.**

JULIAN STORY.

535 **Portrait.**

Lent by Walter Lippincott, Esq.

HENRY GOLDEN DEARTH.

536 **The Day's Work Done.**

Lent by Mrs. Chauncey I. Blair.

HENRY R. POORE.

537 **Marsh Hay.**

JANET WHEELER.

538 **Portrait of Alfred G. Baker Lewis.**

Lent by John Frederick Lewis, Esq.

WALTER GAY.

539 **Blue and White.**

THOMAS EAKINS.

540 **Ruth.**

## SOUTH CORRIDOR.



ARTHUR M. HAZARD.

551 Portrait of Elinor Macartney Lane.

WALTER MACEWEN.

552 The Yellow Robe.

CHARLES ROSEN.

553 March Morning.

ROBERTSON K. MYGATT.

554 The Brook.

PATRICK HENRY BRUCE.

555 Man in Black.

WALTER FARNDON.

556 North River.

ELENORE PLAISTED ABBOTT.

557 An August Day.

ADOLPHE BORIE.

558 Portrait.

*PAINTINGS IN OIL.*

---

- CHARLES ROSEN.  
559 Washed-out Bottomland.
- WILLIAM J. EDMONDSON.  
560 Last Gleam.
- EUGENE PAUL ULLMAN.  
561 Portrait of Mrs. Ullman.
- E. IRVING COUSE.  
562 A Mountain Hunter.
- CHARLES WARREN EATON.  
563 November Moonrise.
- JOSEPH T. PEARSON, JR.  
564 Emily.
- W. GRANVILLE-SMITH.  
565 Night Calm.
- JOSEPH BENJAMIN DAVOL.  
566 Where the River Meets the Sea.
- EUGENE PAUL ULLMAN.  
567 Portrait of Madame Fisher.  
Awarded the Temple Medal.
- WILL HOWE FOOTE.  
568 The Village Street.
- GUSTAVE WIEGAND.  
569 Spring Song.

*PAINTINGS IN OIL.*

---

VICTOR D. HECHT.

570 Portrait of Miss H.

RICHARD ANDREW.

571 Portrait of a Football Player.

## GALLERY B.



RICHARD BLOSSOM FARLEY.

601 Portrait of Dr. James M. Green.

CONSTANCE CURTIS.

602 Portrait.

ELLIOTT DAINGERFIELD.

603 The Story of the Madonna.

WILLIAM EMILE SCHUMACHER.

604 Rain and the Sea.

ABBOTT H. THAYER.

605 Portrait of Mrs. Walter Cranston Larned.

Lent by Walter Cranston Larned, Esq.

CLARA MAMRE NORTON.

606 Lilly.

KARL ANDERSON.

607 Young Lady with Blue Coat.

ALLEN B. TALCOTT.

608 The Return of the Redwings.

*PAINTINGS IN OIL.*

---

LEE LUFKIN KAULA.

609 Agnes.

ALBERT ROSENTHAL.

610 Hon. Edward M. Paxson, Chief Justice of  
Pennsylvania.

MARY SMYTH PERKINS.

611 La Siesta.

WILLIAM SARTAIN.

612 The Meadow.

MYRON BARLOW.

613 Grandfather.

MARY FOOTE.

614 Portrait of a Lady.

MARY BUTLER.

615 Mist: Looking Seaward.

LUCIUS WOLCOTT HITCHCOCK.

616 A Name in the Casualty List.

CHARLES A. WATSON.

617 Nearing Port.

GUSTAVE WIEGAND.

618 Sumac and Maple ; Connecticut Hills.

CAROLINE STEHLIN.

619 Study in Brown.

*PAINTINGS IN OIL.*

---

WILHELM FUNK.

620 Captain Try-Davies.

RUTH MCGOWAN.

621 The Poor Neighbor.

EMILIE ZECKWER.

622 Two Old Maids.

FLORENCE CARLYLE.

623 The Mother.

LOUISE COX.

624 Mother and Child.

JOHN SLOAN.

625 The Coffee Line.

J. REDDING KELLY.

626 Near Fieldhome.

W. VERPLANCK BIRNEY.

627 The Larder.

ALBERT ROSENTHAL.

628 Col. M. Richards Mucklé.

ALFRED W. SCHWARTZ.

629 November Sunlight and Shadow.

WILLIAM SARTAIN.

630 Café Bleu, Algiers.



*PAINTINGS IN OIL.*

---

JOHN C. JOHANSEN.

631 Evening.

WILLIAM J. HAYS.

632 Portrait of an Airedale Terrier.

W. W. GILCHRIST, JR.

633 The Model's Rest.

CURTIS WILLIAMSON.

634 Dutch Granny.

JOSEPHINE M. LEWIS.

635 Portrait of a Child.

FRANK O. SMALL.

636 Fruit-sellers at Nassau.

MARY W. BONSALE.

637 Portrait of Amos Bonsall.

SILAS S. DUSTIN.

638 Cattle and Landscape.

WILLARD L. METCALF.

639 East Boothbay Harbor.

WILLIAM W. CHURCHILL.

640 Black, Gray, and Violet.

WILLIAM T. SMEDLEY.

641 Portrait of My Mother.

*PAINTINGS IN OIL.*

---

FRANK REED WHITESIDE.

642 The Pool.

EDMUND GREACEN.

643 Portrait.

EDITH CORRINNE SWAN.

644 The Practice Hour.

WALTER L. PALMER.

645 The Pines, Lake George.

ERNEST L. MAJOR.

646 Heaven's Blue Smile.

MARY S. EDWARDS.

647 At Vespers.

DWIGHT BLANEY.

648 In the Park.

LIONEL WALDEN.

649 Waves Breaking Over Rocks.

EDWARD H. POTTHAST.

650 Summit of the Alps from Gorner Grat.

I. H. CALIGA.

651 The Ward Politicians.

ELIZABETH CURTIS.

652 Portrait.

*PAINTINGS IN OIL.*

---

MARTIN BORGORD.

653 Figure in Black.

W. W. GILCHRIST, JR.

654 Portrait of Mr. Bernard de Schweinitz.

WALTER L. DEAN.

655 Ballast-haulers.

JAMES B. SWORD.

656 At the Ferry.

EDWIN B. CHILD.

657 The Old Marble Quarry.

WILBUR DEAN HAMILTON.

658 Portrait.

PHILIP L. HALE.

659 Portrait of an Old Lady.

F. A. BRIDGMAN.

660 The Coast Road, Algeria.

HARRY ROSELAND.

661 Resting; Noon-time.

EDMOND T. QUINN.

662 Portrait.

E. IRVING COUSE.

663 The Fireside.

*PAINTINGS IN OIL.*

---

ADELAIDE COLE CHASE.

664 Portrait of Josef Adamowski.

ALEXANDER HARRISON.

665 Evening Glow.

F. HUTTON SHILL.

666 Ruth.

## SOUTH TRANSEPT.



JAMES R. HOPKINS.

701 Figure of a Young Girl.

LESLIE P. THOMPSON.

702 Gray Morning at Boulogne.

FLORENCE CARLYLE.

703 A Jewess.

SARAH S. STILWELL.

704 Japanese Girl.

JAMES R. HOPKINS.

705 Portrait of Madame Renon.

ROBERTSON K. MYGATT.

706 A Southeaster.

EDMOND WEILL.

707 Summer Grays.

HELEN M. TURNER.

708 White Houses and Sunshine.

BLONDELLE MALONE.

709 A Snowy Day in France.

*PAINTINGS IN OIL.*

---

CURTIS WILLIAMSON.

710 Jaap.

BENEDICT A. OSNIS.

711 Portrait Study.

MARY FOOTE.

712 Portrait of Mrs. Wilfred Worcester.

LESLIE P. THOMPSON.

713 Moutreuil-Sur-Mer.

CURTIS WILLIAMSON.

714 Old Dutchman.

CAROLINE PEART.

715 The Oval Mirror.

ROBERT H. NISBET.

716 Adagio.

M. L. JUDSON.

717 A Brook in April.

MAURICE STERNE.

718 Portrait of Sculptor.

EMMA EILERS.

719 Charlotte.

EVERETT L. BRYANT.

720 Baby and Nurse.

*PAINTINGS IN OIL.*

---

SUSAN WATKINS.

721 Ruth.

W. H. LISLE.

722 The Nocturne.

MARY BREWSTER HAZELTON.

723 Portrait of Dr. I. H. Hazelton.

E. CHRISTINE LUMSDON.

724 Study of a Head.

J. L. G. FERRIS.

725 A Game of Chess.

ANNA H. HUDSON.

726 San Giorgio Maggiore.

PERCY BIGLAND.

727 Portrait of Dean Bond.

ALFRED E. SMITH.

728 Portrait of Dr. Franz.

SILAS S. DUSTIN.

729 Westchester Meadows.

DAVID ERICSON.

730 Nocturne in Blue.

MARY HEARN GREIMS.

731 Stalheim, Norway.

Lent by George Arnold Hearn, Esq.

*PAINTINGS IN OIL.*

---

S. J. WOOLF.

732 Portrait of John Finley, President of College  
of City of New York.

VAN DEARING PERRINE.

733 Ice Flows from the Cliff.

M. H. BANCROFT.

734 Portrait of Miss Evelyn B. Longman.

WARREN B. DAVIS.

735 A Moment.

ELLA S. HERGESHEIMER.

736 The Cabinet.

L. L. MERTON GRUENHAGEN.

737 Portrait of My Mother.

L. L. MERTON GRUENHAGEN.

738 Tired of Play.

PAULA B. HIMMELSBACH.

739 Portrait, Mr. Martinus Van Gelder.

W. H. WILLCOX.

740 Spring Beauties.

BIRGE HARRISON.

741 The Flatiron after Rain.

KENNETH NEWELL AVERY.

742 Portrait of a Man.



## GALLERY E.



WALTER NETTLETON.

751 Santa Barbara Channel.

EDWARD H. POTTHAST.

752 Moonlight on the Marsh.

HERMANN DUDLEY MURPHY

753 The White Still Life.

J. H. TWACHTMAN.

754 Winter.

MARY L. WEISS.

755 The Sundial.

H. M. WALCOTT.

756 Hare and Hounds.

FREDERICK J. WAUGH.

757 Evening.

GEORGE ELMER BROWNE.

758 Etaples ; Beyond the Marsh.

LOUISE COX.

759 Blue and Gold.

*PAINTINGS IN OIL.*

---

GEORGE H. LEONARD, JR.

760 Boats at Pont Aven.

CHARLES H. DAVIS.

761 December Sunlight.

E. K. K. WETHERILL.

762 Françoise la pauvre.

ROBERT W. VONNOH.

763 In Questa Tomba.

Lent by Francis Walker, Esq.

EDWARD B. FULDE.

764 Visit.

CHARLES H. DAVIS.

765 Springtime.

E. K. K. WETHERILL.

766 Theodule.

JACQUES EMILE BLANCHE.

767 Portrait of Nancy McKean.

Lent by Thomas McKean, Esq.

SHIRLEY WILLIAMSON.

768 The Marshes.

FREDERICK MACMONNIES.

769 Portrait of Mrs. D. P. B. C.

*PAINTINGS IN OIL.*

---

PHILIP L. HALE.

770 Portrait.

WILLARD L. METCALF.

771 The Young Oak.

EMMA EILERS.

772 Louisa.

MARY SMYTH PERKINS.

773 Portrait of Carol and Ellis Allen.

WILLIAM J. GLACKENS.

774 Central Park ; Winter.

M. JEAN MCLANE.

775 In a City Square.

FRANK RUSSELL GREEN.

776 The Coming of Night.

WILHELM FUNK.

777 General Horace Porter.

ERNEST FUHR.

778 Fishing Village, St. Pierre.

ANNE HEEBNER.

779 The South Window.

F. K. M. REHN.

780 End of a Stormy Day.

*PAINTINGS IN OIL.*

---

IRVING R. WILES.

781 Portrait.

WILLIAM J. GLACKENS.

782 Battery Park.

EMMA EILERS.

783 The Homestead.

MARY SHEPARD GREENE—BLUMENSCHHEIN.

784 Le Negligée.

GEORGE GIBBS.

785 Surf.

SAMUEL A. WEISS.

786 Moonlight.

HOWARD GARDINER CUSHING.

787 Mrs. Patrick Campbell.

LOUIS KRONBERG.

788 Snow Ballet.

L. M. GENTH.

789 Brittany.

ROCKWELL KENT.

790 Manana Island.

## CENTRAL CORRIDOR.



HENRY SALEM HUBBELL.

801 Lady in Black.

MARTHA WALTER.

802 The Breton Maid.

F. K. M. REHN.

803 Surf at Cape Ann.

AUGUSTUS VINCENT TACK.

804 Portrait of Mr. La Farge.

JOEL NOLL ALLEN.

805 Rev. Charles H. Parkhurst, D. D.

E. F. KRUSEMAN VAN ELTEN.

806 Too Sleepy to Eat.

CAROLINE PEART.

807 Portrait.

CHARLES ABEL CORWIN.

808 Midday.

ZELMA BAYLOS.

809 An Engineer Officer.

*PAINTINGS IN OIL.*

---

PARKE C. DOUGHERTY.

810 Montigny Village.

WILLIAM T. SMEDLEY.

811 Portrait, Mrs. W. T. Smedley.

THEODORE C. STEELE.

812 In the Valley.

FREDERIC REMINGTON.

813 The Last Lull in the Fight.

FRANK TOWNSEND HUTCHENS.

814 An Olive Garden in Capri.

THEODORE WENDEL.

815 Town Hall, Ipswich.

CARL NEWMAN.

816 Plating the Hair.

HELEN WATSON PHELPS.

817 Portrait of Mr. Henry B. Snell.

H. WINTHROP PEIRCE.

818 The River.

ROSAMOND LOMBARD SMITH.

819 On the Sand Dunes.

CARL RUNGUIS.

820 On Northern Heights.

*PAINTINGS IN OIL.*

---

ROSAMOND LOMBARD SMITH.

821 A Woman Sewing.

EDWARD R. KINGSBURY.

822 Morning.

WILLIAM DE LEFTWICH DODGE.

823 Jeannette.

MARTHA S. BAKER.

824 Portrait of John T. McCutcheon.

WILLIAM JOHNSON BIXBEE.

825 After a Storm : Marblehead.

ERIC PAPE.

826 The Foaming Surges.

PERCY BIGLAND.

827 Portrait of Ellis Yarnall, Esq.

DEWITT M. LOCKMAN.

828 Portrait of Miss M.

JOHN PHELPS PETTE.

829 Portrait of Old Man.

VICTOR D. HECHT.

830 Portrait of Albert Dakin Gihon.

ROBERT F. WILLIAMS.

831 Patches of Snow.

*PAINTINGS IN OIL.*

---

HELEN WATSON PHELPS.

832 Portrait.

FLORENCE FRANCIS SNELL.

833 The White Street : Sunset.

BENJAMIN EGGLESTON.

834 A Storm on the Mountainside.

ALICE F. TILDEN.

835 Portrait.

GEORGE REITER BRILL.

836 Portrait of Mr. S.

FRANK R. WADSWORTH.

837 Young Woman in a Morris Chair.

ANNE HEEBNER.

838 A Spring Fantasy.

LILIAN WESTCOTT HALE.

839 As in a Looking-glass.

JANET WHEELER.

840 The Breakfast.

ROBERT C. KLUTH.

841 A Norway Fjord.

FRANK R. WADSWORTH.

842 When the Sun Shines in.



*PAINTINGS IN OIL.*

---

PAULA B. HIMMELSBACH.

843 Portrait.

HENRY R. RITTENBERG.

844 A Portrait.

ELLIOTT DAINGERFIELD.

845 The Holy Family.

HERMAN G. HERKOMER.

846 Portrait of David S. Bispham, Esq., as the Duc  
de Longueville in the Opera "La Basoche."  
Lent by David S. Bispham, Esq.

SANDOR L. LANDEAU.

847 Lady with Scarf.

FREDERICK MACMONNIES.

848 Portrait of Miss E. P.

## SCULPTURE IN NORTH TRANSEPT AND ROTUNDA.



KARL BITTER.

901 Portrait of Mrs. C. R. C. and Child.

ABASTENIA ST. LEGER EBERLE.

902 Moors Leaving Spain.

ALEXANDER STIRLING CALDER.

903 Man-Cub.

Cast in bronze for the permanent collection of the  
Academy.

C. P. CRUMB.

904 Ideal Head.

SHOBAL VAIL CLEVENGER.

905 Bust of Joseph Hopkinson.

Cast in bronze for the permanent collection of the  
Academy.

ELI HARVEY.

906 Family of Playing Leopards.

Lent by Eli Harvey, Esq.

EDWARD BERGE.

907 French Washerwomen.

SCULPTURE.

---

WILLIAM RUSH.

908 Bust of William Rush.

Cast in bronze for the permanent collection of the Academy.

ANNA V. HYATT.

909 Tigers Watching.

ELI HARVEY.

910 American Elk.

BELA L. PRATT.

911 Portrait Bust of General Charles J. Paine.

BESSIE POTTER VONNOH.

912 Modern Madonna.

RICHARD F. GEORGE.

913 Medallion of the late Henry George.

JEROME CONNER.

914 Walt Whitman.

M. GEORGIA ORMOND.

915 In Olden Times.

JANET SCUDDER.

916 Portrait Bas-relief.

JANET SCUDDER.

917 Portrait Bas-relief.

SCULPTURE.

---

WALTER S. ALLWARD.

918 Justice.

EVELYN B. LONGMAN.

919 Portrait of M. H. Bancroft.

SAMUEL MURRAY.

920 Portrait Statuette of Joseph Wharton, Esq.

FRANK F. STONE.

921 Relief Portrait; of the late Sir Henry Irving.

MAHONRI YOUNG.

922 Standing.

MAHONRI YOUNG.

923 Portrait of Alfred H. Maurer.

GRACE HOOPER.

924 Le Petit Bonnet.

CHARLES GRAFLY.

925 Walter Elmer Schofield.

FREDERICK G. R. ROTH.

926 The Tramp.

RICHARD F. GEORGE.

927 Portrait of Mr. Harry Fenn.

CHARLES GRAFLY.

928 Victor H. Zoll.

SCULPTURE.

---

WILLARD D. PADDOCK.

929 The Flower Boys.

ANNA V. HYATT.

930 Lioness and Cubs.

CHARLES GRAFLY.

931 Memorial to Leverett Bradley.

CHARLES GRAFLY.

932 Edwin S. Clymer.

ANNA V. HYATT.

933 Pigs.

JOHN M. BATEMAN.

934 Relief Portrait.

CHARLES GRAFLY.

935 D. C. Müller.

H. A. MAC NEIL.

936 Margaret.

ELI HARVEY.

937 Roaring Lion.

CAROL BROOKS MAC NEIL.

938 Brothers.

ANNA Y. HYATT.

939 Colts Playing.

*SCULPTURE.*

---

HERBERT ADAMS.

940 Portrait Bust of Daniel F. Appleton.

PERCIVAL DIETSCH.

941 Orpheus and Eurydice.

J. SCOTT HARTLEY.

942 Bust of Charles Battell Loomis.

SAMUEL MURRAY.

943 Statuette of Mrs. James Mapes Dodge.

A. O'CONNOR.

944 Nehemiah—Fragment of Vanderbilt Doors.

AUGUSTUS LUKEMAN.

945 Doria the Genoese.

ATTILIO PICCIRILLI.

946 Fragment of a Group for a Public Monument.

ELI HARVEY.

947 Lion With Scull.

MAHONRI YOUNG.

948 The Shoveller.

MAHONRI YOUNG.

949 The Chiseller of Stone.

ELI HARVEY.

950 Roaring Lion

SCULPTURE.

---

H. LYMAN SAYEN.

951 Design for Sculptured Reredos.

ATTILIO PICCIRILLI.

952 Fragment of a Group for a Public Monument.

A. O'CONNOR.

953 Inspiration.

JOHN DONOGHUE.

954 Sophocles.

Lent by David S. Bispham, Esq.

FRANK M. WHITE.

955 Relief portrait of a Child.

MARY LAESSLE.

956 A Girl with a Hoop.

MARTHA M. HOVENDEN.

957 Design for Memorial Tablet.

SAMUEL MURRAY.

958 Portrait of Admiral George W. Melville,  
U. S. N.

GAIL SHERMAN.

959 Figure for Hamilton S. White Memorial.

GIUSEPPE DONATO.

960 Inspiration.

SCULPTURE.

---

ISAAC BROOME.

961 The Wandering Psyche.

EDWARD BERGE.

962 Muse Finding Head of Orpheus.

GAIL SHERMAN.

963 Figures for Hamilton S. White Memorial.

SALVATOR E. FBILOTTI.

964 Portrait Bust.

ELI HARVEY.

965 Rampant Jaguar.

FURIO PICCIRILLI.

966 Portrait of My Sister.

LOUISA EYRE.

967 Miss Betty.

GIUSEPPE DONATO.

968 Nature's Melody.

CAROLINE PEDDLE BALL.

969 Figurine : Child with Picture Book.

ELI HARVEY.

970 Lioness and Cub ; Maternal Caress.

FURIO PICCIRILLI.

971 Relief Portrait of a Child.



SCULPTURE.

---

SERGEANT KENDALL.

- 972 Portrait Bust of Chanler Chapman.  
Lent by John Jay Chapman, Esq.

HERBERT ADAMS.

- 973 Portrait bust of Mrs. H.

ANNA V. HYATT.

- 974 Winter.

MAHONRI YOUNG.

- 975 Fatigue.

SAMUEL MURRAY.

- 976 Portrait of Mrs. Kern Dodge.

A. O'CONNOR.

- 977 Calabrian.

WALTER S. ALLWARD.

- 978 Jurisprudence.

ANNA V. HYATT.

- 979 Goats Butting.

JOHN FLANAGAN.

- 980 Frame of Medals.

HENRY H. KITSON.

- 981 Portrait.

ELI HARVEY.

- 982 Texas Steer.

SCULPTURE.

---

ELI HARVEY.

983 Young Lion with Rabbit.

JOHN FRAZEE.

984 Bust of John Frazee.

Cast in bronze for the permanent collection of the Academy.

SOLON H. BORGLUM.

985 Tamed.

ELI HARVEY.

986 Prometheus Bound.

JEAN ANTOINE HOUDON.

987 Bust of John Paul Jones.

Cast in bronze for the permanent collection of the Academy.

ELI HARVEY.

988 Young Lion with Antelope.

CLARA PFEIFER GARRETT.

989 Les Chrysalides.

CHARLES GRAFLY.

990 George Harding.

CARL BITTER.

991 Peace. Figure for surmounting column.

A. O'CONNOR.

992 Adam.

SCULPTURE.

---

A. O'CONNOR.

993 Portrait of a Lady.

JANET SCUDDER.

994 Portrait Bas-relief.

CYRUS E. DALLIN.

995 Portrait Bust.

J. M. BOERICKE.

996 Hiawatha Welcoming the Pale Face.

JULES REMMLEIN.

997 Portrait Bust.

MARTHA M. HOVENDEN.

998 Portrait.

R. TAIT MCKENZIE.

999 The Boxer.

ATTILIO PICCIRILLI

1000 Head of a Youth.

ENID YANDELL.

1001 Madame de la Meillaie.

ELI HARVEY.

1002 Recumbent Lioness.

ALEXANDER STIRLING CALDER.

1003 Hennig Memorial Tablet.

*SCULPTURE.*

---

GIUSEPPE DONATO.

1004 Contemplation.

ATTILIO PICCIRILLI.

1005 Head of a Boy.

HENRY C. MERCER.

1006 Flower Pot with Byzantine Design in Clay.

## SCULPTURE IN GALLERY K.



LOUISA EYRE.

1011 Bust of Richard Lewis Ashhurst, Esq.

EDWARD BERGE.

1012 Portrait Bust.

CHARLES M. RUSSELL.

1013 Counting Coup.

CHARLES M. RUSSELL.

1014 Buffalo Hunt.

LOUISA EYRE.

1015 The Wind.

JOHN K. BRITTON.

1016 Head of a Priest.

META VAUX WARRICK.

1017 Portrait from Mirrors.

ALBERT LAESSLE.

1018 Portrait Bust.

HENRY K. BUSH-BROWN.

1019 Infant Conversation.

SCULPTURE.

---

EDWARD BERGE.

1020 Master W.

CLYDE C. BATHURST.

1021 Portrait of J. F. Bathurst.

FRANK F. STONE.

1022 Whisper of the Dawn.

EDMOND T. QUINN.

1023 Dolorosa.

LOUISA EYRE.

1024 Head of a Child.

WILLIAM H. GLEAVES.

1025 Study of Child.

LOUIS R. DOUGHERTY.

1026 Fannie.

ATTILIO PICCIRILLI.

1027 Portrait of Mrs. Newcomb.

VICTOR SALVATORE.

1028 Ava.

PAUL NOCQUET.

1029 American Foot-ball.

PAUL NOCQUET.

1030 Effort.

THEO ALICE RUGGLES KITSON.

1031 The Framingham Minute Man.

# INDEX TO ARTISTS

## REPRESENTED IN THE PRESENT EXHIBITION

The figures following the address refer  
to the numbers in this Catalogue.

- Abbott, Elenore Plaisted,  
43 South 18th Street, Philadelphia, 557.
- Adams, Herbert,  
131 West 11th Street, New York City, 940, 973.
- Aid, George Charles,  
3 rue Campagne Premiere, Paris, France, 237.
- Ainsley, Oliver,  
15 West 67th St., New York City, 205.
- Akin, Louis,  
45 East 20th St., New York City, 161.
- Allen, Joel Nott,  
114 East 23rd St., New York City, 805.
- Allward, Walter S.,  
76 Walker Avenue, Toronto, Canada, 918, 978.
- Anderson, Karl,  
57 E. 59th St., New York City, 607.
- Andrew, Richard,  
192 Boylston St., Boston, Mass., 571.
- Anshutz, Thomas P.,  
Fort Washington, Pennsylvania, 56, 343.
- Avery, Kenneth Newell,  
18 rue Boissonnade, Paris, France, 742.
- Baker, Martha S.,  
1026 Fine Arts Bldg., Chicago, Illinois, 93, 824.

INDEX.

---

- Ball, Caroline Peddle,  
Westfield, N. J., 969.
- Bancroft, M. H.,  
145 W. 55th St., New York City, 734.
- Barlow, Myron,  
225 East Adams Ave., Detroit, Michigan, 613.
- Bateman, John M.,  
1729 Vine St., Philadelphia, 934.
- Bathurst, Clyde C.,  
1623 Arch St., Philadelphia, 1021.
- Baylos, Zelma,  
830 Carnegie Hall Studios, New York City, 809.
- Beal, Gifford,  
Newburgh, New York, 252, 158.
- Beaux, Cecilia,  
The Ludlow, Boston, Massachusetts, 40, 414.
- Benson, Frank W.,  
Salem, Mass., 2, 11, 531.
- Berge, Edward,  
1335 Greenmount Ave., Baltimore, Md.,  
907, 962, 1012, 1020.
- Bigland, Percy,  
Haverford College, Haverford, Pa., 727, 827.
- Bilotti, Salvatore F.,  
1720 Poplar St., Philadelphia, 964.
- Birney, W. Verplanck,  
58 West 57th St., New York City, 627.
- Bitter, Karl,  
Weehawken, N. J., 901, 991.
- Bittinger, Charles,  
10 rue Galilee, Paris, France, 41.
- Bixbee, William Johnson,  
11 Hamilton Place, Boston, Mass., 825.
- Blaney, Dwight,  
Fenway Studio Building, Boston, Mass., 648.



## INDEX.

---

- Blumenschein, Mary Shepard Greene,  
19 rue Le Verrier, Paris, France, 784.
- Boericke, J. M.,  
1020 Chestnut St., Philadelphia, 996.
- Boldini, Jean,  
41 Boulevard Berthier, Paris, France, 419.
- Bonsall, Mary W.,  
10 South 18th St., Philadelphia, 637.
- Borglum, Solon H.,  
30 East 14th Street, New York City, 985.
- Borgord, Martin,  
Edgeworth, Pennsylvania, 653.
- Borie, Adolphe,  
620 South Washington Square,  
Philadelphia, 21, 558.
- Blanche, Jacques Emile,  
Paris, France, 767.
- Breckenridge, Hugh H.,  
Fort Washington, Pennsylvania, 101, 420.
- Brewster, Earl H.,  
42 Washington Square, New York City, 326.
- Bridgman, F. A.,  
146 rue la Malesherbes, Paris, France, 660.
- Brill, George Reiter,  
1520 Chestnut St., Philadelphia, 836.
- Britton, John K.,  
126 West State St., Trenton, N. J., 1016.
- Broome, Isaac,  
235 East State St., Trenton, N. J., 961.
- Brown, Ethelbert,  
24 East 21st St., New York City, 39.
- Browne, George Elmer,  
70 bis rue Notre Dame des Champs,  
Paris, France, 758.
- Brownell, Matilda,  
1110 Carnegie Hall, New York City, 318.

INDEX.

---

- Bruce, Patrick Henry,  
65 Boulevard Arago, Paris, France, 555.
- Bruestle, George M.,  
306 East 25th St., New York City, 307.
- Brush, George de Forest,  
19 West 34th St., New York City, 317.
- Bryant, Everett L.,  
1438 N. 15th St., Philadelphia, 90, 720.
- Burgess, Ida J.,  
43 Washington Square, New York City, 236.
- Bush Brown, Henry K.,  
Newburgh, New York, 1019.
- Butler, Mary,  
2127 Green St., Philadelphia, 331, 615.
- Butler, Theodore Earl,  
Giverney par Vernon (Eure), France, 508.
- Calder, Alexander Stirling,  
1903 Park Avenue, Philadelphia, 903, 1003.
- Caliga, I. H.,  
130 Federal St., Salem, Mass, 651.
- Carlsom, Emil,  
43 East 59th St., New York City, 345.
- Carlyle, Florence,  
7 West 42nd St., New York City, 62, 623, 703.
- Cassatt, Mary,  
Care of Messrs Durand-Ruel, Paris, France, 19,  
336.
- Chase, Adelaide Cole,  
95 Beacon St., Boston, Mass., 231, 246, 249, 664.
- Chase, William M.,  
303 Fifth Avenue, New York City,  
34, 44, 351, 411, 514, 516, 520.
- Child, Edwin B.,  
71 Broadway, Flushing, L. I., New York, 657.
- Churchill, William W.,  
Fenway Studios, Boston, Massachusetts, 640.

*INDEX.*

---

- Clevenger, Shobal Vail,  
(Deceased), 905.
- Collier, C. Myles,  
Van Dyck Studios, New York City, 527,
- Coman, Charlotte B.,  
939 Eighth Avenue, New York City, 311.
- Conner, Jerome  
Syracuse, New York, 914.
- Cooper, Colin Campbell,  
58 West 57th St., New York City, 107, 330.
- Corwin, Charles Abel,  
14 Stearns Road, Brookline, Mass., 808.
- Couse, E. Irving,  
58 West 57th St., New York City, 562, 663.
- Cox, Louise,  
75 West 55th St., New York City, 624, 759.
- Crumb, C. P.,  
619 Walnut St., Room 18, Philadelphia, 904
- Curran, Charles C.,  
16 West 61st St., New York City, 309, 347.
- Curtis, Constance,  
33 West 69th St., New York City, 602.
- Curtis, Elizabeth,  
27 West 47th St., New York City, 230, 652.
- Cushing, Howard G.,  
Care of Morgan, Harjes & Co., Paris, France,  
59, 222, 250, 787.
- Daingerfield, Elliott,  
145 West 55th St., New York City, 603, 845.
- Dallin, Cyrus E.,  
Arlington Heights, Mass., 995.
- Davies, Arthur B.,  
237 Fifth Avenue, New York City, 503, 505, 506.
- Davis, Charles H.,  
2 Park St., Boston, Mass., 102, 761, 765.

*INDEX.*

---

- Davis, Warren B.,  
7 West 42nd St., New York City, 735.
- Davol, Joseph Benjamin,  
Ogunquit, Maine, 66, 534, 566.
- Dean, Walter L.,  
3 Winter St., Boston, Mass., 655.
- Dearth, Henry Golden,  
Carnegie Hall Studios, New York City, 38, 536.
- De Camp, Joseph,  
20 St. Botolph St., Boston, Mass., 14, 67, 325.
- De Haven, F.,  
23 West 24th St., New York City, 504.
- Dessar, Louis Paul,  
25 West 67th St., New York City, 45.
- Dewing, T. W.,  
51 West 10th St., New York City,  
436, 437, 438, 439, 440.
- Dietsch, Percival,  
717 E. 142nd St., New York City, 941.
- Dodge, William de Leftwich,  
51 West 10th St., New York City, 244, 823.
- Donato, Guiseppe,  
809 South 8th St., Philadelphia, 960, 968, 1004.
- Donoghue, John,  
(Deceased), 954.
- Dougherty, Louis R.,  
5829 Crittenden St., Germantown, Phila., 1026.
- Dougherty, Parke C.,  
49 Boulevard du Montparnasse,  
Paris, France, 810.
- Dougherty, Paul,  
27 West 67th St., New York City, 12, 306.
- Du Bois, Guy,  
4 Rue de la Grande, Chaumiere, France, 202.
- Dufner, Edward,  
1036 Elmwood Ave., Buffalo, N. Y., 322.

## INDEX.

---

- Du Mond, Frank Vincent,  
27 West 67th St., New York City, 57, 97.
- Dunbar, Harold C.,  
The Kayden Studio, Belmont, Mass., 213.
- Dustin, Silas S.,  
146 West 23rd St., New York City, 638, 729.
- Eakins, Thomas,  
1729 Mt. Vernon St., Philadelphia, 29, 319, 403,  
502, 540.
- Eaton, Charles Warren,  
318 West 57th St., New York City, 47, 156, 563.
- Eberle, Abastenia St. Leger,  
11 E. 33rd St., New York City, 902.
- Edmondson, William J.,  
550 Euclid Ave., Cleveland, Ohio, 560.
- Edwards, Mary S.,  
4801 Forbes St., Pittsburg, Pennsylvania, 647.
- Eggleston, Benjamin,  
712 Arbuckle Building, Brooklyn, New York,  
526, 834.
- Eilers, Emma,  
751 St. Marks Ave., Brooklyn, New York,  
719, 772, 783.
- Ericson, David,  
107 East 27th St., New York City, 730.
- Este, Florence,  
28 Ave. de l' Observatoire, Paris, France. 159.
- Eyre, Louisa,  
10 South 18th St., Philadelphia, 967, 1011,  
1015, 1024.
- Farley, Richard Blossom,  
1305 Arch St., Philadelphia, 601.
- Farndon, Walter,  
1789 Amsterdam Ave., New York City, 556.
- Ferris, J. L.G.,  
1520 Chestnut St., Philadelphia, 725.

## INDEX.

---

- Fisher, Anna,  
939 Eighth Ave., New York City, 82, 512.
- Flanagan, John,  
107 East 27th St., New York City, 980.
- Foote, Mary,  
Carnegie Hall, 57th St., New York City, 304,  
614, 712.
- Foote, Will Howe,  
939 Eighth Ave., New York City, 412, 568.
- Fraze, John,  
(Deceased), 984.
- Fuhr, Ernest,  
112 West 40th St., New York City, 778.
- Fulde, Edward Bernard,  
4 Rue Hervieu, Neuilly-sur-Seine, France, 764.
- Fuller, Margaret,  
286 Boylston St., Boston, Mass., 81.
- Funk, Wilhelm,  
119 West 42nd St., New York City, 620, 777.
- Garber, Daniel,  
32 via de Bardi, Florence, Italy, 224, 248, 511.
- Garrett, Clara Pfeifer,  
15 E. 59th St., New York City, 989.
- Gay, Walter,  
73 rue Ampere, Paris, France, 539.
- Genth, L. M.,  
1520 Chestnut St., Philadelphia, 42, 789.
- George, Richard F.,  
45 Washington Sq., New York City, 913, 927.
- Gibbs, George,  
Rosemont, Pennsylvania, 785.
- Gihon, Albert D.,  
59 Avenue de Saxe, Paris, France, 76.
- Gihon, Clarence M.,  
21 Rue Brea, Paris, 94.

## INDEX.

---

- Gilchrist, W. W., Jr.,  
716 Locust St., Philadelphia, 518, 633, 654.
- Glackens, William J.,  
3 North Washington Square,  
New York City, 103, 774, 782.
- Gleaves, William H.,  
31 Conrad St., Trenton, N. J., 1025.
- Golz, Julius, Jr.,  
261 West 54th St., New York City, 523.
- Graffy, Charles,  
2200 Arch St., Philadelphia,  
925, 928, 931, 932, 935, 990.
- Granville-Smith, W.,  
96 Fifth Ave., New York City, 302, 565.
- Greacen, Edmund,  
9 Rue Falguiere, Paris, 643.
- Green, Elizabeth Shippen,  
"Red Rose," Villa Nova, Pennsylvania,  
466, 467, 468, 469, 470, 471, 474, 475, 476, 477, 478, 479.
- Green, Frank Russell,  
211 West 85th St., New York City, 776.
- Greims, Mary Hearn,  
33 West 12th St., New York City, 731.
- Groll, Albert L.,  
121 East 23rd St., New York City, 23.
- Gruenhagen, L. L. Merton,  
Care of Penna. Academy of the Fine Arts,  
737, 738.
- Hale, Lilian Westcott,  
Fenway Studios, Ipswich St., Boston, Mass.,  
839.
- Hale, Philip L.,  
Fenway Studios, Ipswich St., Boston, Mass.,  
659, 770.
- Hamilton, John McLure,  
Murested, Grove End Road, London, 472

## INDEX.

---

- Hamilton, Wilbur Dean,  
20 Beacon St., Boston, Mass., 658.
- Harding, Charlotte,  
10 S. 18th St., Philadelphia,  
480, 481, 482, 483, 484, 485, 486.
- Harrison, Alexander,  
6 Rue de Val de Grace, Paris, 65, 228, 501, 665.
- Harrison, Birge,  
7 West 43rd St., New York City, 335, 741.
- Hartley, J. Scott,  
145 W. 55th St., New York City, 942.
- Harvey, Eli,  
80 E. Washington Sq., New York City,  
906, 910, 937, 947, 950, 965, 970, 982, 983, 986, 988, 1002.
- Hassam, Childe,  
27 West 67th St., New York City,  
16, 208, 209, 220, 221.
- Hawthorne, Charles W.,  
15 MacDougall Alley, New York City, 407.
- Hays, William J.,  
145 East 23rd St., New York City, 632.
- Hazard, Arthur M.,  
296 Boylston St., Boston, Mass., 243, 551.
- Hazelton, Mary Brewster,  
304 Fenway Studios, Ipswich St., Boston, Mass.,  
723.
- Hecht, Victor D.,  
80 West 40th St., New York City, 570, 830.
- Heebner, Anne,  
524 Walnut St., Philadelphia, 779, 838.
- Henri, Robert,  
58 West 57th St., New York City, 33.
- Herdle, George L.,  
28 State St., Rochester, N. Y., 30.



INDEX.

---

- Hergesheimer, Ella S.,  
34 South Fulton St.,  
Allentown, Pennsylvania, 245, 736.
- Herkomer, Herman G.,  
Cleveland, Ohio, 846.
- Herzog, Lewis,  
80 West 40th St., New York City, 72, 80.
- Hildebrandt, H. L.,  
27 West 67th St., New York City, 339.
- Himmelsbach, Paula B.,  
10 South 18th St., Philadelphia, 739, 843.
- Hitchcock, Lucius Wolcott,  
152 West 55th St., New York City, 616.
- Hoffman, Harry L.,  
Cressona, Schuylkill Co., Pennsylvania, 405.
- Holbrook, Anna Stanley,  
627 East 13th St., Chester, Pennsylvania, 226.
- Homer, Winslow,  
Scarboro, Maine, 303.
- Hooper, Grace,  
Hotel Oxford, Boston, Mass., 924.
- Hopkins, James R.,  
51 Boulevard St. Jacques, Paris, France,  
701, 705.
- Hopkinson, Charles,  
Manchester, Mass., 5, 524.
- Horton, William S.,  
64 Rue de la Rochefaucauld, Paris, France, 58.
- Houdon, Jean Antoine,  
(Deceased), 987.
- Hovenden, Martha M.,  
Plymouth Meeting, Pennsylvania, 957, 998.
- Howard, B. K.,  
Pine Bank House, Jamaica Plain, Mass., 217.
- Hubbell, Henry Salem,  
Chateau de Razieres,  
Par Nanteuil-le-Haudoin, Oise, France, 801.

## INDEX.

---

- Hudson, Miss A. H.,  
42 Lowndes St., London, S. W., 726.
- Hunt, Helen Duniap,  
(Deceased), 162.
- Hutchens, Frank Townsend,  
14 W. 12th St., New York City, 814.
- Hyatt, Anna V.,  
11 E. 33d St., New York City,  
909, 930, 933, 939, 974, 979.
- Johansen, John C.,  
43 S. Washington Sq., New York City, 84, 631.
- Judson, M. L.,  
Stratford, Connecticut, 717.
- Kaula, Lee Lufkin,  
Fenway Studios, Boston, Mass., 609,
- Keith, William,  
424 Pine St., San Francisco, California, 73.
- Kelly, J. Redding,  
217 West 125th St., New York City, 626.
- Kendall, Sergeant,  
26 West 8th St., New York City, 234, 972.
- Kent, Rockwell,  
Tarrytown, New York, 790.
- Kingsbury, Edward R.,  
18 a, Rockville Park, Roxbury, Mass., 822.
- Kitson, Henry H.,  
221 Columbus Ave., Boston, Mass., 981.
- Kitson, Theo Alice Ruggles,  
221 Columbus Ave., Boston, Mass., 1031.
- Kluth, Robert C.,  
277 Kosciusko St., Brooklyn, New York, 841.
- Koopman, Augustus,  
Etaples, France, 152, 155, 515.
- Kronberg, Louis,  
3 Winter St., Boston, Mass., 788.

INDEX.

---

- Laessle, Albert,  
5 Rue de Bagneux, Paris, France, 1018.
- Laessle, Mary,  
5 Rue de Bagneux, Paris, 956.
- Lambert, John,  
324 South 7th St., Philadelphia, 48, 301, 519.
- Landeau, Sandor L.,  
31 B'd Berthier, Paris, 847.
- Lathrop, W. L.,  
New Hope, Bucks Co., Pennsylvania, 61, 241.
- Lavery, John,  
5 Cromwell Place, London, England, 332.
- Lawson, Ernest,  
450 West 23rd St., New York City, 105, 229.
- Leonard, George H., Jr.,  
17 Rue Boissonade, Paris, 204, 760.
- LeRoy, Anita,  
43 South 18th Street, Philadelphia,  
454, 455, 487, 495, 496.
- Lewis, Josephine M.,  
Carnegie Studio, New York City, 635.
- Lisle, W. H.,  
463 West 21st St., New York City, 722.
- Lockman, DeWitt M.,  
58 West 57th St., New York City, 828.
- Loeb, Louis,  
58 West 57th St., New York City, 153, 305.
- Longman, Evelyn B.,  
11 East 14th St., New York City, 919.
- Lukeman, Augustus,  
145 W. 55th St., New York City, 945.
- Lumsdon, E. Christine,  
Hotel Majestic, New York City, 724.
- McCarter, Henry,  
Bethayres, Pennsylvania, 99.

INDEX.

---

- MacEwen, Walter,  
11 Place Pigalle, Paris, 308, 552.
- McGowan, Ruth,  
Cleveland Park, Washington, D. C., 621.
- McKenzie, R. Tait, 121 South 18th St.,  
Philadelphia, 999.
- McLane, M. Jean,  
43 South Washington Sq., New York City, 775.
- Mac Monnies, Frederick,  
Givery par Vernon, Eure, France, 769, 848.
- MacNeil, Carol Brooks,  
College Point, Long Island, N. Y., 938.
- MacNeil, H. A.,  
College Point, Long Island, N. Y., 936.
- Macauley, Ellen,  
Jamestown, Rhode Island, 473.
- Magee, J. C.,  
1714 Chestnut St., Philadelphia, 418.
- Major, Ernest L.,  
20 St. Botolph St., Boston, Mass., 646.
- Malone, Blondelle,  
1517 East Gervais St., Columbia, S. C., 709.
- Marsh, Fred Dana,  
Nutley, New Jersey, 498.
- Maurer, Alfred H.,  
9 Rue Falguiere, Paris, France, 313.
- Melchers, Gari,  
Hotel Manhattan, New York City, 18.
- Mercer, Henry C.,  
Doylestown, Pennsylvania, 1006.
- Metcalf, Willard L.,  
16 Gramercy Park, New York City, 91, 639, 771.
- Meyvis, Aime Leon,  
448 St. Paul St., Rochester, New York, 320.
- Meyvis, Fred W.,  
275 Glenwood Ave., Rochester, New York, 329.

## INDEX.

---

- Mills, Charles E.,  
Greenleaf Block, Dedham, Mass., 160.
- Molarsky, A.,  
93 Rue de Vaugirard, Paris, France, 225, 344.
- Mora, F. Luis,  
142 East 18th St., New York City, 154.
- Mumford, Alice,  
524 Walnut St., Philadelphia, 247.
- Murphy, Hermann Dudley,  
Copley Hall, Boston, Mass., 314, 525, 532, 753.
- Murray, Samuel,  
2210 Chestnut St., Philadelphia,  
920, 943, 958, 976.
- Myers, Jerome,  
113 East 59th St., New York City, 410.
- Mygatt, Robertson K.,  
15 East 32d St., New York City, 151, 554, 706.
- Needham, Charles Austin,  
145 East 23d St., New York City, 521.
- Nettleton, Walter,  
Stockbridge, Mass., 751.
- Newman, Carl,  
Bethayres, Pennsylvania, 212, 214, 216, 816.
- Nisbet, Robert H.,  
12 Rhode Island Ave., Providence, R. I.  
316, 716.
- Nocquet, Paul,  
55 E. 59th St., New York City, 1029, 1030.
- Norton, Clara Mamre,  
49 Woodland St., Bristol, Conn., 606.
- Nourse, Elizabeth,  
80 Rue d' Assas, Paris, 157.
- Noyes, George L.,  
23 Irvington St., Boston, Mass., 4, 210.
- Oberteuffer, George,  
9 Rue Falguere, Paris, France, 346.

INDEX.

---

- Ochtman, Leonard,  
156 Carnegie Hall, New York City, 24.
- O'Connor, A.,  
84 Bd. Garibaldi, Paris, France,  
944, 953, 977, 992, 993.
- Ormond, M. Georgia,  
2106 Jefferson Ave., Toledo, Ohio, 915.
- Osnis, Benedict A.,  
1520 Chestnut St., Philadelphia, 711.
- Paddock, Willard D.,  
22 East 10th St., New York City, 15, 929.
- Palmer, Walter L.,  
5 LaFayette St., Albany, N. Y., 645.
- Pancoast, Henry Boller, Jr.,  
Cornwells, Bucks Co., Pennsylvania, 96.
- Pape, Eric,  
"The Highlands,"  
Annisquam, Cape Ann, Mass., 826.
- Parker, Lawton S.,  
9 Impasse du Maire, Paris, France, 7.
- Parrish, Clara Weaver,  
939 Eighth Ave., New York City, 310, 324.
- Parrish, Maxfield,  
Windsor, Vermont, 460, 461, 462, 463, 464, 465.
- Partington, Gertrude,  
American Girls' Club,  
4 Rue de Chevreuse, Paris, 416.
- Paxton, William M.,  
Fenway Studios, Boston, Mass., 206, 497.
- Pearson, Joseph T., Jr.,  
5139 Wayne St., Germantown, 87, 100, 564.
- Peart, Caroline,  
1723 Chestnut St., Philadelphia, 715, 807.
- Peirce, H. Winthrop,  
East Billerica, Mass., 818.

## INDEX.

---

- Perkins, Mary Smyth,  
1520 Chestnut St., Philadelphia, 611, 773.
- Perrine, Van Dearing,  
The Palisades, Englewood, N. J., 733.
- Petersen, M.,  
42 West 60th St., New York City, 108.
- Pette, John Phelps,  
131 Jackson St., Trenton, N. J., 829.
- Phelps, Helen Watson,  
58 West 57th St., New York City, 817, 832.
- Piccirilli, Attilio,  
717 E. 142d St., New York City,  
946, 952, 1000, 1005, 1027.
- Piccirilli, Furio,  
717 E. 142d St., New York City, 966, 971.
- Poore, Henry R.,  
Lyme, Conn., 401, 537.
- Potthast, Edward H.,  
318 W. 57th St., New York City, 650, 752.
- Powell, Lucien W.,  
1425 New York Ave., Washington, D. C., 421.
- Pratt, Bela L.,  
St. Botolph Studios, Boston, Mass., 911.
- Preston, May Wilson,  
58 W. 57th St., New York City, 413.
- Quinn, Edmond T.,  
232 West 14th St., New York City, 662, 1023.
- Redfield, Edward W.,  
Centre Bridge, Pennsylvania, 79, 341, 533.
- Rehn, F. K. M.,  
The Chelsea, West 23d St., New York City,  
780, 803.
- Reid, Robert,  
142 East 33rd St., New York City, 3, 6.
- Remington, Frederic,  
301 Webster Ave., New Rochelle, N. Y., 813.

## INDEX.

---

- Remmlein, Jules,  
112 East Indiana Ave., Philadelphia, 997.
- Ritschel, William,  
59 E. 59th St., New York City, 406.
- Rittenberg, Henry R.,  
S. E. Cor. 10th and Walnut, Philadelphia, 844.
- Robinson, William S.,  
202 West 74th St., New York City, 417.
- Rook, Edward F.,  
Old Lyme, Conn., 507, 509.
- Roseland, Harry,  
191 Clinton St., Brooklyn, N. Y., 661.
- Rosen, Charles,  
New Hope, Bucks Co., Pennsylvania,  
28, 553, 559.
- Rosenthal, Albert,  
1529 Chestnut St., Philadelphia, 610, 628.
- Roth, Frederick G. R.,  
14 W. 12th St., New York City, 926.
- Rungius, Carl,  
107 Kent St., Brooklyn, New York, 820.
- Rush, William,  
(Deceased), 908.
- Russell, Charles M.,  
Great Falls, Montana, 1013, 1014.
- Ryder, Chauncey F.,  
Etaples, Pas de Calais, France, 50.
- Salvatore, Victor,  
131 E. 34th St., New York City, 1028.
- Sargent, John S.,  
33 Tite Street, Chelsea, S. W.,  
London, England, 25, 528.
- Sartain, William,  
152 West 57th St., New York City, 612, 630.
- Sawe, Henry L.,  
16 Rue Boissonade, Paris, France, 402.



## INDEX.

---

- Sayen, H. Lyman,  
1020 Chestnut St., Philadelphia, 951.
- Schofield, W. Elmer,  
St. Ives, Cornwall, England, 27, 77.
- Schumacher, William Emile,  
59 Ave de Saxe, Paris, France, 604.
- Schwartz, Alfred W.,  
Ulster Park, Ulster Co., New York, 328, 629.
- Scott, Edwin,  
17 Rue Boissonade, Paris, France, 337, 342.
- Scudder, Janet,  
1424 New York Ave., Washington, D. C..  
916, 917, 994.
- Sherman, Gail,  
107 E. 27th St., New York City, 959, 963.
- Shill, F. Hutton,  
226 Burns St., Camden, New Jersey, 31, 78, 666.
- Shinn, Everett,  
112 Waverly Place, New York City, 409.
- Singer, William H., Jr.,  
"Hill Crest," Edgeworth, Pa., 17, 20, 333.
- Sloan, John,  
165 West 23rd St., New York City, 74, 408, 625.
- Small, Frank O.,  
31 Pinckney St., Boston, Mass., 636.
- Smedley, William T.,  
Carnegie Hall, New York City, 71, 641, 811.
- Smith, Alfred E.,  
296 Boylston St., Boston, Mass., 728.
- Smith, Jessie Willcox,  
The Red Rose, Villa Nova, Pa., 451, 452,  
453, 456, 457, 458, 459, 488, 489, 490, 491,  
492, 493, 494.
- Smith, Rosamond Lombard,  
405 Fenway Studios, Ipswich St., Boston, Mass.,  
819, 821.

## INDEX.

---

- Snell, Florence Francis,  
37 West 22nd St., New York City, 833.
- Snell, Henry B.,  
37 West 22nd St., New York City, 323, 338.
- Sotter, George W.,  
1928 Sidney St., Pittsburgh S. S., Pa., 10, 86.
- Spear, Arthur P.,  
74 Rue Notre Dame des Champs,  
Paris, France, 98.
- Steele, Theodore C.,  
Security Trust Building, Indianapolis, Ind., 812.
- Stehlin, Caroline,  
162 East 93rd St., New York City, 619.
- Steichen, Eduard J.,  
293 Fifth Ave., New York City, 8, 88.
- Sterne, Maurice,  
6 Rue Vercingitorix, Paris, France, 106, 517, 718.
- Stilwell, Sarah S.,  
524 Walnut St., Philadelphia, 704.
- Stone, Frank F.,  
317 N. Beaudry Ave., Los Angeles, Calif.  
921, 1022.
- Story, Julian,  
The St. James, Philadelphia, 75, 535.
- Sturgis, M. R.,  
4 Acorn St., Boston, Mass., 203.
- Swan, Edith Corrinne,  
405 Fenway Studios, Ipswich St.,  
Boston, Mass., 644.
- Swett, William Otis, Jr.,  
139 West 55th St., New York City, 22.
- Sword, James B.,  
1520 Chestnut St., Philadelphia, 656.
- Tack, Augustus Vincent,  
2 Park St., Boston, Mass., 804.

## INDEX.

---

- Talcott, Allen B.,  
27 West 67th St., New York City, 69, 608.
- Tanner, H. O.,  
70 bis Rue Notre Dame des Champs,  
Paris, France, 327.
- Tarbell, Edmund C.,  
Tavern Club, Boylston Place,  
Boston, Massachusetts, 36, 63, 201.
- Taylor, Charles J.,  
16 Gramercy Park, New York City, 350.
- Thayer, Abbott H.,  
Dublin, N. H., 441, 442, 443, 605.
- Thompson, Leslie P.,  
19 Magoun Ave., Medford, Mass., 702, 713.
- Tilden, Alice F.,  
Studio C, Grundmann Studios,  
Boston, Mass., 835.
- Tryon, Dwight W.,  
226 W. 59th St., New York City,  
431, 432, 433, 434, 435.
- Turcas, Jules,  
27 West 67th St., New York City, 352.
- Turner, Helen M.,  
3 Rutherford Place, New York City, 708.
- Twachtman, John H.,  
(Deceased), 1, 95, 238, 239, 242, 754.
- Tyson, Carroll S., Jr.,  
319 Walnut St., Philadelphia, 510.
- Ullman, Eugene Paul,  
33 Rue Marbeuf, Paris, France, 561, 567.
- Van der Weyden, Harry,  
Montreuil sur Mer-Pas de Calais,  
Paris, France, 60, 68, 92.
- Van Elten, E. F. Kruseman,  
chez Paul Foinet fils 21 Rue Bre'a,  
Paris, France, 806.

## INDEX.

---

- Vinton, Frederic P.,  
247 Newbury St., Boston, Mass., 513.
- Volk, Douglas,  
355 Fifth Avenue, New York City, 89,
- Vonnoh, Bessie Potter,  
33 W. 67th St., New York City, 912.
- Vonnoh, Robert W.,  
33 West 67th St., New York City, 9, 763.
- Wadsworth, Frank R.,  
Hotel Wisconsin, Chicago, Ill., 404, 837, 842.
- Wagner, Fred,  
235 S. Camac St., Philadelphia, 32, 35, 223.
- Walcott, H. M.,  
Rutherford, N. J., 756.
- Walden, Lionel,  
33 Bard Edgar Quinet, Paris, France, 649.
- Walker, Horatio,  
372 Fifth Avenue, New York City,  
49, 51, 52, 53, 54.
- Warner, Everett L.,  
400 West 57th St., New York City, 522.
- Walter, Martha,  
2126 North 16th St., Philadelphia, 802.
- Warrick, Meta Vaux,  
206 S. 12th St., Philadelphia, 1017.
- Watkins, Susan,  
1 Rue du Val de Grace, Paris, France, 721.
- Watson, Charles A.,  
718 Jefferson St., Waverly, Baltimore, Md., 617.
- Watson, Elizabeth V. Taylor,  
404 Fenway Studios, Ipswich St.,  
Boston, Mass., 215.
- Waugh, Frederick J.,  
4102 Pine St., Philadelphia, 251, 757.
- Weill, Edmond,  
1132 Hancock St., Brooklyn, New York, 707.

INDEX.

---

- Weir, J. Alden,  
11 East 12th St., New York City,  
37, 85, 240, 334.
- Weir, John, F.,  
Yale School of Fine Arts, New Haven, Conn.  
83.
- Weiss, Mary L.,  
328 Broad St., Bethlehem, Pa., 755.
- Weiss, Samuel A.,  
Coytesville, N. J., 786.
- Wendel, Theodore,  
Ipswich, Mass., 218, 232, 233, 815.
- Wetherbee, George,  
The White Cottage, Redington Road,  
London, N. W., England, 26.
- Wetherill E. K. K.,  
2014 Walnut St., Philadelphia, 762, 766.
- Wheeler, Janet,  
1710 Chestnut St., Philadelphia, 538, 840.
- Whistler, J. McNeill,  
(Deceased), 444, 445, 446.
- White, Frank M.,  
1113 Arch St., Philadelphia, 955.
- White, H. Maynard,  
1710 Chestnut St., Philadelphia, 849.
- Whiteman, S. Edwin,  
Mt. Washington, Baltimore Co., Md., 315.
- Whiteside, Frank Reed,  
Wyncote, Pa., 530, 642.
- Wiegand, Gustave,  
191 Clinton St., Brooklyn, N. Y.,  
312, 529, 569, 618.
- Wiles, Irving R.,  
106 W. 55th St., New York City, 340, 781.
- Willcox, W. H.,  
40 W. Seymour St., Germantown, 740.

INDEX.

---

- Williams, Frederick Ballard,  
152 West 55th St., New York City, 13.
- Williams, Robert F.,  
Mariners Harbor, Staten Island, N. Y., 831.
- Williamson, Curtis, 58 West 57th St., New York City,  
634, 710, 714.
- Williamson, Shirley,  
163 W. 74th St., New York City, 768.
- Woodbury, Charles H.,  
194 Clarendon St., Boston, Mass., 46, 415.
- Wolf, S. J.,  
139 West 55th St., New York City, 732.
- Worcester, Albert,  
29 Rue Delambre, Paris, France, 227, 235, 349.
- Yandell, Enid,  
66 E. 77th St., New York City, 1001.
- Yates, Cullen,  
939 Eighth Ave., New York City, 43, 55.
- Young, Charles Morris,  
56 Rue Notre Dame des Champs,  
Paris, France, 64, 104, 207.
- Young, E. M. Coxe,  
56 Rue Notre Dame des Champs,  
Paris, France, 211, 219.
- Young, Mahonri,  
174 C St., Salt Lake City, Utah,  
922, 923, 948, 949, 975.
- Zeckwer, Emilie,  
1522 Chestnut St., Philadelphia, 70, 348, 622.



THE  
**Musical Echo  
 Company**

Invites the artistic public of Philadelphia to call and hear their favorite operatic selections as sung by

MELBA, TAMAGNO, CARUSO,  
 PLANCON, EAMES, AND  
 SEMBRICH



*Calvé.*

CONCERTS WEDNESDAY AND SATURDAY AT 8.30

***Musical Echo Company***

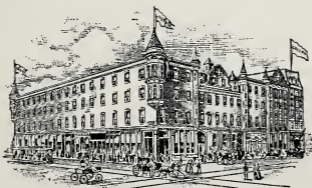
1339 CHESTNUT STREET

**GREEN'S HOTEL** European Plan

For Ladies and Gentlemen

Eighth and Chestnut Sts., Philadelphia

60 New  
 Rooms  
 with  
 Bath  
 Attached  
 \$2.00  
 Per Day



315  
 Rooms  
 \$1.00  
 and  
 Upwards  
 Per  
 Day

M. W. NEWTON, Proprietor.

Finest Restaurant in Philadelphia

Table d'Hote Dinner 12 to 8 P. M. at 50 Cents.

ORCHESTRA—12.30 to 2; 6 to 8 and 10.30 to 12 P. M

# WINSOR & NEWTON'S



2-inch Tube, Oil Color

Artist Oil and  
Water Colors are  
the **WORLD**  
**STANDARD**

WINSOR  
&  
NEWTON'S  
"BRITISH"  
CANVAS



Size of Half Tube

Prepared for Oil Painting. Made in Rough Roman and Smooth Surface. BRITISH LINEN, carefully selected and of fine quality, is used by WINSOR & NEWTON (Limited) in the production of their British Prepared Canvas. Sample book on application.

## The "Winton" White for Oil Color Painting

This White has been introduced to meet the demand for a really good quality of White Lead which can be obtained at a moderate price.

It is intended: 1—For the use of art students. 2—For the sketches, rough studies, etc., by artists in general. 3—For decorative work, on a large scale, by artists and craftsmen. 4—Double tubes, each 12 cents. Half-pound tubes, each 25 cents. 5—One-pound tubes, each 50 cents. Two-pound tubes, each 50 cents.

## Winsor & Newton's Illustration Boards



For Water Color and General Black and White Work for reproductions. It is also recommended for Pencil and Crayon Work. Write for samples.

Size of Whole Pans

Send stamp for complete catalogue

**WINSOR & NEWTON, Ltd.**

298 Broadway, New York

38 Rathbone Pl., London, Eng.



# HENRY M. TAWS

— Importer and Dealer in —

## Artists' Designers' and Illustrators' Materials

920 Arch Street :: :: Philadelphia



☞ Devoc, Mussini and Winsor and Newton Oil Colors. Winsor and Newton, Bourgeois and Hordam Water Colors. Special Whites for Illustration. Thomson, Sempie, Blanc de Argent, and others. Photo-Retouching Colors. Russian Compressed Charcoal. Winsor and Newton and Rubens finest Oil Brushes. :: :: :: :: :: :: ::

# F. WEBER & CO.

Manufacturers and Importers of

## ARTISTS' MATERIALS

F. W. & Co.'s Superfine Artists' Oil Colors.

F. W. & Co.'s Canvas and Academy Boards.

F. W. & Co.'s Moist Water Colors,

in Pans, Tubes, and Glass Pots.

F. W. & Co.'s Soft and Half Hard Pastels,

Pastel Paper, Pastel Canvas, and Boards.

Pyrography Outfits and Materials.

WORKS ON ART FOR ALL BRANCHES

IMPORTERS OF

Winsor & Newton's Oil and Water Colors.

Lacroix's and Müller & Hennig's China Colors.

Mathematical Instruments and Draughtsmen's  
Materials in large variety.

**1125 Chestnut Street, Philadelphia, Pa.**

*Branch Houses:*

709 Locust St., St. Louis, Mo.

227 Park Ave., Baltimore, Md.

F. W. DEVOE & CO.'S

Artists' Tube  
Colors :: :: ::



CANVAS, ACADEMY BOARDS, FINE BRUSHES for  
OIL and WATER-COLOR PAINTING are Perfectly Reliable,  
and can be had of all dealers. F. W. Devoe & Co.'s Tube  
Paints are ground to that consistency desired by professional  
Artists, and are THE "STANDARD QUALITY"

Supplies for China Painting, Modelling, Etching  
Pen-and-Ink Drawing, Pyrography, Miniature  
Painting, Engraving, etc. . . . .  
CATALOGUE ON REQUEST

NEW YORK, FULTON and WILLIAM STREETS

CHICAGO, 176 RANDOLPH STREET

ESTABLISHED 1846

*Wm. D. Rogers, Son & Co.*

COACHMAKERS

*329 & 331 North Broad Street*

AUTOMOBILE WORK

*Philadelphia*

---

HENRY W. BROWN & COMPANY  
INSURANCE

435 Walnut Street

Philadelphia

---

*Boys' and Misses' Sailor Suits a Specialty*

*Ladies' Tailor Made Suits and Riding Habits*

PETER THOMSON

NAVAL AND MERCHANT TAILOR

1118 WALNUT STREET

14 AND 16 W. 33d ST.  
NEW YORK

PHILADELPHIA



CHARLOTTE CUSHMAN.

35 Lockwood Ave., New Rochelle.

August 7th, 1903.

DEAR MR. GUTEKUNST:

Accept warm thanks for your kind courtesy in sending me your wonderful portrait of my great friend, Charlotte Cushman. The likeness and life-likeness startled me at first, almost too painfully, as though she were but just dead, and it were the first day of mourning for her, the noble woman and grand actress. Allow me to say that as an artist, who can capture the character, and conjure forth the soul, you are, for me, still unrivalled.

Believe me, yours sincerely,

GRACE GREENWOOD.

(Mrs. S. J. Lippincott.)

Faithful Photographic Portraiture

F. GUTEKUNST STUDIOS

712 Arch Street

1700 North Broad Street

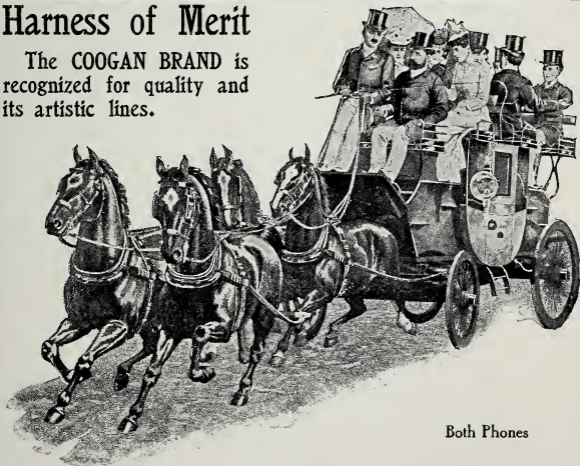
**TABLETS**  
 OR NAME PLATES  
 BRASS-BRONZE-GOLD  
 FOR OIL PAINTINGS

**W. H. ABBOTT**  
 1263 B'WAY.  
 NEW YORK

**DESIGNER**  
 OF BOOK PLATES  
 STATIONERY ARMS  
 CRESTS CARDS ETC.

## Harness of Merit

The COOGAN BRAND is recognized for quality and its artistic lines.



Both Phones

**RICHARD COOGAN**  
 HARNESS SPECIALIST

236 S. TWENTY-FIRST STREET and  
 237 S. VAN PELT STREET  
 PHILADELPHIA



Cable Address, Vangrifi  
A B C Code Used

Publishers Vandegrift's U. S. Tariff  
Telephone, 4655

F. B. VANDEGRIFT & CO.  
Customs Brokers and General Forwarders  
IMPORT FREIGHT AGENTS

PHILADELPHIA & READING RAILWAY COMPANY

PHILADELPHIA: 50 SOUTH FOURTH STREET

NEW YORK  
66 BEAVER STREET

CHICAGO  
315 DEARBORN STREET

# Mount Boards and Cover Papers

---

## CRASH, ANTIQUE, PLATE AND LINEN FINISHES

Well Chosen Qualities that Afford Rich  
Contrasts and Offer an Extensive Field  
for Color Schemes

OF INTEREST TO ALL SEEKERS FOR ARTISTIC EFFECTS

*SEND FOR SAMPLES*

Charles Beck Paper Company, Limited  
Six Hundred Nine Chestnut Street  
PHILADELPHIA, PA.

---

## COLLECTING AND FORWARDING FOR EXHIBITIONS A SPECIALTY

Packers, Removers, and Shippers of  
Paintings, Bric-a-Brac, Furniture,  
Etc.

*Telephone, 120 Columbus*

---

STORAGE

---

424  
West 52d St.  
New York



W. S. BUDWORTH & SON

We are Agents for and  
we refer you to the  
Pennsylvania Academy of the Fine  
Arts and Philadelphia Water Color Club.

Pictures, etc., received, delivered  
to, and returned from, all

NEW YORK CITY EXHIBITIONS

# FIDELITY TRUST COMPANY

Nos. 325-331 CHESTNUT STREET

Nos. 43-53 SOUTH FOURTH STREET

Capital	-	-	-	\$2,000,000
Surplus	-	-	-	\$6,000,000

R. ELLIS, PRESIDENT. WM. P. GEST, VICE-PRES.  
R. M. SCOTT, TREAS. JOS. McMORRIS, SECRETARY

## DIRECTORS

JOHN B. GEST	THOMAS DOLAN
CLEMENT A. GRISCOM	HENRY W. BIDDLE
GEORGE PHILLER	WILLIAM P. GEST
RUDULPH ELLIS	FRANCIS L. POTTS
ALEXANDER J. CASSATT	EDWARD WALTER CLARK

JACOB H. SCHIFF

The 50 Calling Cards now being offered, together with plate engraved in script for \$1.00 as an introduction to our engraving department, are fully equal to cards sold by others at \$1.50 to \$2.50. We use Crane's best card and our engraving is done by hand—no finer calling card can be produced at any price.

Tea and  
Calling Cards

Wedding  
Invitations

*Buy your Writing Paper by the Pound*

AT

## HOSKINS

YOUR STATIONER AND ENGRAVER

904-906 CHESTNUT STREET



The *Freihofers* Vienna Baking Co.

MASTER STREET, 23rd and 24th

VIENNA BREAD and ROLLS

Our Vienna Rolls are delicious, served in time for breakfast.  
Our Special Rolls for Social Teas and Banquets are very popular.

---

Established 1873

HUGH GRAHAM CO.

Florists and Decorators

104 South 13th Street

*Nurseries, Logan Station. Flowers and Plants for all occasions*

---

Stecher's

Women's Outergarments Exclusively

911-913-915 Market St.

---

WHEN ON YOUR SHOPPING TOUR, REST YOURSELF  
WITH A DELIGHTFUL HOUR OR TWO AT

== KEITH'S ==

Rarest Vaudeville Gems in a Million-dollar Setting. Every feature right up to the established Keith Standard. Something New, Bright, Mirthful, and Inspiring every Minute, from One till Ten-thirty P. M. Bring the Children. Prices POPULAR.

MATINEE PARTIES ARE THE RAGE.

Lest you forget, write "KEITH'S" on your Shopping List NOW!



F. Pulaski  
& Company

924

Chestnut St.

BRANCH:

1708

Columbia Ave



ARTISTIC  
FRAMING

---

LEWIS KING

Dealer in

COLONIAL Furniture ANTIQUE

Old English Hall Clocks, Bric-a-Brac, Etc.  
Cabinet Maker and Upholsterer

928 and 930 PINE STREET,

PHILADELPHIA

SOME COAL DEALERS HANDLE

**COAL**

BUT WHEN YOU WANT QUALITY  
YOU MUST DEAL WITH THE

**“QUALITY”**

COAL DEALERS ∴ ∴ ∴ ∴

---

**G. W. EDMONDS & CO**

Main Office, 1920 N. Ninth Street

---

**YARDS**

1920-40 N. Ninth Street      Ridge Ave. and Noble  
Tasker Street Wharf      49th and Grays Ave.

*BOTH PHONES.*

---

---

*WINDSOR HOTEL*

---

---

*Managed by*

College Fraternity Man

*Who Knows How to*

ENJOY ART      ENTERTAIN GUESTS

SPEED THE PARTING

WELCOME THE COMING

---

---

1217-29 Filbert St., Philadelphia

xxi



MARY CARNELL

PHOTOGRAPHER

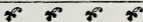
3710 SPRUCE STREET  
BY APPOINTMENT

1314 CHESTNUT STREET

xxii

PHILADELPHIA, PA.

# *Bailey's Pure Rye*



The Whiskey recommended  
by the best physicians :: :: :

## *HUEY & CHRIST*

*1209 Market Street*

*P H I L A D E L P H I A*



# STATON'S ART SHOP

SPECIALTY  
OF FINE  
FRAMING

Printsellers, Importers and Gilders

Oil Paintings skilfully  
cleaned and relined

5402 - 5404 Germantown Avenue  
Above Coulter Street  
GERMANTOWN, PHILADELPHIA





J. B. LIPPINCOTT COMPANY  
*Publishers, Printers & Bookbinders*  
227—231 SOUTH SIXTH STREET

---

---

PROGRAMMES AND CATALOGUES  
GENEALOGICAL & HISTORICAL PUBLICATIONS  
FOR GENERAL OR PRIVATE  
DISTRIBUTION  
FINE LEATHER BINDINGS



PUBLISHERS OF  
**Lippincott's Monthly Magazine**

227 SOUTH SIXTH STREET :: PHILADELPHIA  
TELEPHONE, MARKET 750

# J. E. CALDWELL & CO.

JEWELERS and SILVERSMITHS

---

---

Direct Importers of Pearls, Diamonds, and Other  
Precious Stones



Importers of Fine French and English Clocks  
and European Objects of Decorated Art. . . . .



Representatives for the H. R. Ekegren, Geneva,  
and Vacheron & Constantin, Geneva, Watches.



Sole Philadelphia Agents for  
HAWKES AMERICAN CUT GLASS  
TIFFANY FAVRILE GLASS and LAMPS  
And Other  
ARTISTIC AMERICAN PRODUCTIONS



Illustrated Brochures, with prices of representative pieces,  
arranged according to departments, mailed upon request

*"A Book of Natal Stones" sent postpaid*

Visitors are cordially invited to inspect our Art Rooms upon  
the second floor

---

---

902 Chestnut Street

ESTABLISHED 1846

---

M. Knoedler & Co.

SUCCESSORS TO GOUPIL & COMPANY

## Oil Paintings

of the early DUTCH and ENGLISH SCHOOLS,  
and from the Easels of EMINENT FOR-  
EIGN ARTISTS as well as the MOST  
NOTED AMERICAN PAINTERS

---

## Water Color Drawings

VERY COMPLETE  
COLLECTIONS OF ETCHINGS AND ENGRAVINGS

---

355 FIFTH AVENUE

CORNER THIRTY-FOURTH ST.

NEW YORK

LONDON, 15 Old Bond St.

23 Place Vendome, PARIS

1906

1492

---

414