



ISSN 0974-7907 (Online)  
ISSN 0974-7893 (Print)

## A CHECKLIST OF MAMMALS OF KERALA, INDIA

P.O. Nameer

Centre for Wildlife Studies, College of Forestry, Kerala Agricultural University, KAU (PO), Thrissur, Kerala 680656, India  
nameer.po@kau.in

OPEN ACCESS

**Abstract:** A checklist of mammals of Kerala State is presented in this paper. Accepted English names, scientific binomen, prevalent vernacular names in Malayalam, IUCN conservation status, endemism, Indian Wildlife (Protection) Act schedules, and the appendices in the CITES, pertaining to the mammals of Kerala are also given. The State of Kerala has 118 species of mammals, 15 of which are endemic to Western Ghats, and 29 species fall under the various threatened categories of IUCN.

**Keywords:** CITES, Indian Wildlife (Protection) Act, Malayalam name, vernacular name, Western Ghats.

The systematic collections of mammals of Kerala were made as early as the second half of the 19<sup>th</sup> century. The first book on Indian Mammals by Jerdon (1867) had references to the mammals of Kerala State. Other important historical publications that referred to the mammals of Kerala were those by Sterndale (1884) and Blanford (1888, 1891). As part of the Bombay Natural History Society's (BNHS) Mammal Survey of India held between 1912 to 1923, systematic collections of mammals were carried out from Kerala, the results of which were published by Thomas (1914–1924), Wroughton (1913–1921), Ryley (1913, 1914), Hinton

(1918) and Lindsay (1926, 1929). Taxonomic account on the mammals of Kerala found place in the second edition of the Fauna of British India series by Pocock (1939, 1941) and Ellerman (1961). The other taxonomic treatment on the mammals of Kerala include Ellerman & Morrison-Scot (1951), Prater (1971), Das (1986), Sadasivan (1987), Kurup (1989), Jayson (1996), Balakrishnan (1997), Nameer (2000), Dinesh et al. (2002) and Menon (2003, 2014). A regional checklist of mammals was published by Sathasivam (1996) where he listed 158 species of mammals from Kerala and Tamil Nadu. Subsequently, Nameer et al. (2001) reported 135 species of mammals from the Western Ghats. Dinesh et al. (2004) listed 106 species of mammals, while Easa and Ramachandran (2005) reported 145 species from Kerala.

The two ubiquitous and historically introduced species have been included in the list (e.g., Brown Rat *Rattus norvegicus* and House Mouse *Mus musculus*). The taxonomy and nomenclature follow Wilson & Reeder (2005) and Wilson & Mittermeier (2009), while the vernacular names have been taken from various sources (Sadasivan 1987; Nameer 2000; Menon 2008;



*Vandeleuria nilagirica*  
Nilgiri Long-tailed Tree Mouse

NOT EVALUATED	DATA DEFICIENT	LEAST CONCERN	NEAR THREATENED	VULNERABLE	ENDANGERED	CRITICALLY ENDANGERED	EXTINCT IN THE WILD	EXTINCT
NE	DD	LC	NT	VU	EN	CR	EW	EX



**DOI:** <http://dx.doi.org/10.11609/jott.2000.7.13.7971-7982> | **ZooBank:** urn:lsid:zoobank.org:pub:F3E01ED0-D44F-4E34-92F4-EA6236949AAC

**Editor:** Mewa Singh, University of Mysore, Mysuru, India.

**Date of publication:** 17 November 2015 (online & print)

**Manuscript details:** Ms # o4304 | Received 11 May 2015 | Final received 23 September 2015 | Finally accepted 29 September 2015

**Citation:** Nameer, P.O. (2015). A checklist of mammals of Kerala, India. *Journal of Threatened Taxa* 7(13): 7971–7982; <http://dx.doi.org/10.11609/jott.2000.7.13.7971-7982>

**Copyright:** © Nameer 2015. Creative Commons Attribution 4.0 International License. JoTT allows unrestricted use of this article in any medium, reproduction and distribution by providing adequate credit to the authors and the source of publication.

**Funding:** Kerala Agricultural University.

**Conflict of Interest:** The author declares no competing interests.

**Acknowledgements:** I would like to acknowledge the contribution of my team members viz., Praveen J, Rajeev Raghavan, A Bijukumar, Mohamed Jafer Palot and Sandeep Das in getting this checklist into a final shape. Dileep Anthikkad, Sandeep Das and Praveen Mohandas contributed the images used along with this paper.



Dinesan et al. 2010). Marine mammals in the list are indicated in blue colour.

Though 118 species have been listed here, the occurrence of certain species within the political boundary of Kerala has not been verified as yet, because of the absence of authentic sight records of these species. The most important among these are the Malabar Civet *Viverra civettina* and the Fishing Cat *Prionailurus viverrinus*. Though these two species were known to occur in Kerala based on historical records (Jerdon 1867; Blanford 1888–1891; Pocock 1939; Hutton 1949; Prater 1971; Kurup 1987, 1989), two recent studies (Nandini & Mudappa 2010; Janardhanan et al. 2014) have ruled out the distribution in Kerala. Similarly, there has only been a vague mention of the presence of Eurasian Otter *Lutra lutra* from Kerala in the historic past (Jerdon 1867; Blanford 1888–1891; Pocock 1941; Prater 1971), and there have not been any authentic records of this species from anywhere in the state.

Several recent taxonomic studies have led to splits in the species status of mammals. The Common Langur *Semnopithecus entellus* has now been split into seven species in India (Karanth et al. 2008; Nag et al. 2011; Zinner et al. 2013), of which two are known from Kerala. The other taxonomic splits include those related to Gray Slender Loris *Loris lydekkerianus*, Nilgiri Palm Squirrel *Funambulus sublineatus*, Nilgiri Vandeleuria *Vandeleuria nilagirica*, Hill Shrew *Suncus niger* and Indian Chevrotain *Moschiola indica* (Corbet & Hill 1992, Groves 2000, 2005; Groves & Meijaard 2005; Hutterer 2005; Meegaskumbura & Schneider 2008; Musser & Carleton 2005; Dissanayake & Oshida 2012; Nekaris 2013). There have been several nomenclatural changes at the both generic and species levels, which are given in the Table 1 below, examples include Nilgiri Langur *Semnopithecus johnii*, Blanford's Madromys *Madromys blanfordi*, Chocolate Bat *Falsistrellus affinis*, Dormer's Bat *Scotozous dormeri*, Sambar Deer *Rusa unicolor* and Nilgiri Tahr *Nilgiritragus hylocrius* (Grubb 2005; Musser & Carleton 2005; Simmons 2005; Karanth et al. 2008; Nag et al. 2011; Zinner et al. 2013).

In this monograph, 118 species of mammals in 35 families and 13 orders are listed. Out of which 15 are endemic to Western Ghats. Twenty-nine species of mammals of Kerala, fall under the various threatened categories of IUCN, and five are Near-threatened. Eighty-seven species fall under one of the schedules of Indian Wildlife (Protection) Act and 46 come under one of the appendices of CITES.

## REFERENCES

- Balakrishnan, M. (1997).** Mammalian Resources, pp. 494–506. In: Thampi, K.B., N.M. Nayaar & C.S. Nair (eds.). *The Natural Resources of Kerala*. WWF (I). Thiruvananthapuram, 567pp.
- Blanford, W.T. (1888–1891).** *The Fauna of British India, Including Ceylon and Burma. Mammalia. Part I & II.* Taylor and Francis, Red Lion Court Fleet Street, London, 617pp.
- Das, P.K. (1986).** Studies on the taxonomy and geographical distribution of the species of bats obtained by the Silent Valley expedition, 1980. *Records Zoological Survey of India* 84(1–4).
- Dinesan, C., C. Radhakrishnan & J.R.B. Alfred (2002).** *Threatened Mammals of Kerala*. Zoological Survey of India, Kolkata, i-v+58pp.
- Dinesan, C., C. Radhakrishnan & M.J. Palot (2004).** A systematic list of mammals reported from Kerala, India. *Indian Forester* 130(10): 1113–1131.
- Dinesan, C., C. Radhakrishnan & M.J. Palot (2010).** *Keralathile Sasthanikal* (Mammals of Kerala). Malabar Natural History Society, Kozhikode, 174pp.
- Dissanayake, R. & T. Oshida (2012).** The systematics of the Dusky Striped Squirrel, *Funambulus sublineatus* (Waterhouse, 1838) (Rodentia: Sciuridae) and its relationships to Layard's Squirrel, *Funambulus layardi* Blyth, 1849. *Journal of Natural History* 46(1–2): 91–116.
- Easa, P.S. & K.K. Ramachandran (2005).** *Biodiversity Documentation for Kerala. Part 12 - Mammals*. Kerala Forest Research Institute, Peechi, 40pp.
- Ellerman, J.R. & T.C.S. Morrison-Scott (1951).** *Checklist of Palaearctic and Indian Mammals, 1758–1946*. British Museum of Natural History, London, 810pp.
- Ellerman, J.R. & T.C.S. Morrison-Scott (1966).** *Checklist of Palaearctic and Indian Mammals, 1758–1946, 2<sup>nd</sup> Edition*. British Museum of Natural History, London, 810pp.
- Frost, D.R., W.C. Wozencraft & R.S. Hoffmann (1991).** Phylogenetic relationship of hedgehogs and gymnures (Mammalia: Insectivora: Erinaceidae). *Smithsonian Contributions to Zoology* 518: 1–69.
- Groves, C.P. & P. Grubb (1982).** Relationships of living deer. In: Wemmer, C.M. (ed.). *Biology and Management of the Cervidae. Research Symposia of the National Zoological Park*. Smithsonian Institution Press, Washington, D.C. xiii+577 pp.
- Groves, C.P. & E. Meijaard (2005).** Interspecific variation in *Moschiola*, The Indian Chevrotain. *The Raffles Bulletin of Zoology* 12: 413–421.
- Groves, C.P. (2001).** *Primate Taxonomy*. Smithsonian Institution Press, Washington DC, 350pp.
- Grubb, P. (2005).** Artiodactyla, pp. 637–722. In: Wilson, D.E. & D.M. Reeder (eds.). *Mammal Species of the World: A Taxonomic and Geographic Reference, 3rd Edition, Vol. 1 & 2*. The Johns Hopkins University Press, Baltimore, 2142pp.
- Hinton, M.A.C. (1918–1923).** Scientific results from the mammal survey # XVII, XVIII, XXXIV & XXXVI. *Journal of the Bombay Natural History Society* 26(1): 59–88, 26(4): 933–940, 28(4): 1056–1066, & 29(1): 77–83.
- Hutterer, R. (2005).** Soricomorpha, pp. 220–311. In: Wilson, D.E. & D.M. Reeder (eds.). *Mammal Species of the World: A Taxonomic and Geographic Reference, 3rd Edition, Vol. 1 & 2*. The Johns Hopkins University Press, Baltimore, 2142pp.
- Hutton, A.F. (1949).** Notes on the snakes and mammals of the High Wavy Mountains, Madura District, South India. Part II - Mammals. *Journal of the Bombay Natural History Society* 48: 681–694.
- Janardhanan, R., S. Mukherjee, P.V. Karunakaran & R. Athreya (2014).** On the occurrence of the Fishing Cat *Prionailurus viverrinus* Bennet, 1833 (Carnivora: Felidae) in coastal Kerala, India. *Journal of Threatened Taxa* 6(3): 5569–5573; <http://dx.doi.org/10.11609/JoTT.o3780.5569-73>
- Jayson, E.A. (1996).** *Rare and Endangered Mammals of Kerala*. KFRI, Book No. 3. Peechi, 44pp.
- Jerdon, T.C. (1867).** *The Mammals of India*. British Museum of Natural History publications, 335pp.

Table 1. Checklist of mammals of Kerala

English name	Species name	Authority	Malayalam name	Vernacular name	IUCN	END	WPA	CITES
<b>I. ORDER PROBOSCIDEA</b>								
1. Family Elephantidae (elephants)								
1	Asian Elephant (Indian Elephant)	Linnaeus, 1758	ഈര	Ána	EN		Sch. I	App. I
<b>II. ORDER SIRENIA</b>								
2. Family Dugongidae (dugongs)								
2	<i>Dugong dugong</i>	(Muller, 1776)	കടൽ പശു	Katal Paśu	VU		Sch. I	App. I
<b>III. ORDER SCANDENTIA</b>								
3. Family Tupaiidae (treeshrews)								
3	Madras Treeshrew (South Indian Treeshrew) <sup>1</sup>	(Waterhouse, 1850)	മരച്ചപ്പി	Mara Nacheli	LC			
<b>IV. ORDER PRIMATES</b>								
4. Family Lorisidae (lorises)								
4	Grey Slender Loris (Grey Slender Loris) <sup>2</sup>	Cabrera, 1908	കുട്ടിത്തേവരങ്ങ്	Kuṭṭittēvāññ	LC		Sch. I	
5. Family Cercopithecoidea (old world monkeys)								
5	Bonnet Macaque <sup>1</sup>	(E. Geoffroy, 1812)	നാടൻ കുരങ്ങ്	Nāṭan Kurahñ	LC		Sch. II	
6	Lion-tailed Macaque	(Linnaeus, 1758)	സിംഹവാലൻ കുരങ്ങ്	Sinhavālan Kurahñ	EN	WG	Sch. I	
7	Black-footed Grey Langur (Black-footed Grey Langur, Malabar Sacred Langur)	Blyth, 1841	കരിങ്കയ്യൻ കുരങ്ങ്	Kariñkayyan Kurahñ	VU	WG	Sch. II	
8	Nilgiri Langur <sup>3</sup>	(J. Fischer, 1829)	കരിമ്പുരങ്ങ്	Kariñkurahñ	VU	WG	Sch. I	
9	Tufted Grey Langur (Tufted Grey Langur, Coromandel Sacred Langur) <sup>4</sup>	Blyth, 1844	തൊപ്പിഹാരുകുരങ്ങ്	Teappi hanumān kurahñ	NT		Sch. II	
<b>V. ORDER RODENTIA</b>								
6. Family Sciuridae (squirrels)								
10	Malabar Giant Squirrel (Indian Giant Squirrel) <sup>1</sup>	(Erleben, 1777)	മലയണ്ണൻ	Malayannān	LC		Sch. II	
11	Grizzled Giant Squirrel (Sri Lankan Giant Squirrel) <sup>4</sup>	(Pennant, 1769)	ചമ്പൽ അണ്ണൻ	Chāmpal Annān	NT		Sch. I	
12	Indian Giant Flying Squirrel (Large Brown Flying Squirrel)	(Elliot, 1839)	പാറൻ	Pāṭān	LC		Sch. II	
13	Travancore Flying Squirrel <sup>4</sup>	(Jerdon, 1847)	കുന്നൻ പാറൻ	Kunnan Pāṭān	NT		Sch. I	
14	Three-striped Palm Squirrel (Indian Palm Squirrel) <sup>5</sup>	(Linnaeus, 1766)	അണ്ണാക്കണ്ണൻ	Annāṛakkannan	LC			
15	Nilgiri Palm Squirrel <sup>6</sup>	(Waterhouse, 1838)	കുന്നൻ അണ്ണൻ	Kunnan Annān	VU	WG		
16	Jungle Palm Squirrel (Western Ghats Striped Squirrel)	(Waterhouse, 1837)	കാട്ടുവരയണ്ണൻ	Kāṭṭuvarayannān	LC	WG		

English name	Species name	Authority	Malayalam name	Vernacular name	IUCN	END	WPA	CITES
7. Family Platacanthomyidae (tree mouse)								
17	Spiny Tree Mouse (Spiny Dormouse)	Blyth, 1859	മുളളമല	Mullēli	VU	WG		
8. Family Muridae (rats and mice)								
18	Lesser Bandicoot-rat (Indian Mole-rat)	(Gray, 1835, in 1830-1835)	തൃശ്ശൂരണി	Turappanēli	LC		Sch. V	
19	Greater Bandicoot-rat	(Bechstein, 1800)	പെരുച്ചുഴി	Peruchāli	LC		Sch. V	
20	Indian Bush Rat	Gray, 1837	ഗോളുണ്ട എലി	Gēāluṅṅa Eli	LC		Sch. V	
21	Blanford's Madromys (White-tailed Wood-rat) <sup>7</sup>	(Thomas, 1881)	വെള്ളവേലർ എലി	Vēllavālan Eli	LC		Sch. V	
22	Little Indian Field Mouse	(Gray, 1837)	പെരു ചുണ്ടമല	Cheruchunṅṅeli	LC		Sch. V	
23	Bonhote's Mouse (Servant Mouse)	Bonhote, 1898	കാട്ടു ചുണ്ടമല	Kāṭṭuchunṅṅeli	EN	WG	Sch. V	
24	House Mouse <sup>8</sup>	Linnaeus, 1758	ചുണ്ടമല	Chunṅṅeli	LC		Sch. V	
25	Brown Spiny Mouse (Flat-haired Mouse)	Bennett, 1832	മുളളൻ ചുണ്ടമല	Mullān Chunṅṅeli	LC		Sch. V	
26	Brown Rat <sup>9</sup>	(Berkenhout, 1769)	തവീടൻ എലി	Tavīṅṅan Eli	LC		Sch. V	
27	Ranjini's Field Rat (Kerala Rat) <sup>10</sup>	Agarwal & Ghosal, 1969	നൈളി	Nēlēli	EN	KL	Sch. V	
28	House Rat (Roof Rat)	(Linnaeus, 1758)	എലി	Eli	LC		Sch. V	
29	Sahyadris Forest Rat	Hinton, 1918	സഹ്യദ്രി കരടമല	Sahyādrī Kāṭṭeli	VU	WG	Sch. V	
30	Indian Gerbil	(Hardwicke, 1807)	കാശി എലി	Kāgaru Eli	LC		Sch. V	
31	Nilgiri Vandeleuria (Nilgiri Long-tailed Tree Mouse) <sup>11</sup>	Jerdon, 1867	വിലൻ ചുണ്ടമല	Vēlan Chunṅṅeli	EN	WG	Sch. V	
9. Family Hystricidae (porcupines)								
32	Indian Crested Porcupine	Kerr, 1792	മുളളൻ പന്നി	Mullānpanni	LC		Sch. IV	
<b>VI. ORDER LAGOMORPHA</b>								
10. Family Leporidae (hares )								
33	Black-naped Hare (Indian Hare)	F. Cuvier, 1823	കാട്ടു മുയൽ	Kāṭṭmuyal	LC		Sch. IV	
<b>VII. ORDER ERINACEOMORPHA</b>								
11. Family Erinaceidae (hedgehogs)								
34	Bare-bellied Hedgehog (Madras Hedgehog) <sup>12</sup>	(Horsfield, 1851)	ഇത്തിശർപന്നി	Ittiṅṅpanni	LC		Sch. IV	
<b>VIII. ORDER SORICOMORPHA</b>								
12. Family Soricidae (shrews)								
35	Kelaart's Long-clawed Shrew <sup>4</sup>	(Kelaart, 1850)	സിലേൻ നൈളി	Silēān Nācheli	EN			
36	Day's Shrew	(Dobson, 1888)	കാട്ടു നൈളി	Kāṭṭnācheli	EN	WG		
37	House Shrew (Grey Musk Shrew)	(Linnaeus, 1766)	വീട്ടു നൈളി	Vīṭṭnācheli	LC			
38	Hill Shrew (Indian Highland Shrew) <sup>13</sup>	(Horsfield, 1851)	മല നൈളി	Malānācheli	NE	WG		

English name	Species name	Authority	Malayalam name	Vernacular name	IUCN	END	WPA	CITES
39	Pygmy White-toothed Shrew <i>Suncus etruscus</i>	(Savi, 1822)	കുന്നൻ നടുലി	Kunnannacheli	LC			
<b>IX. ORDER CHIROPTERA</b>								
13. Family Pteropodidae (fruit bats)								
40	Lesser Dog-faced Fruit Bat <i>Cynopterus brachyotis</i>	(Muller, 1838)	ശാരമുഖൻ വാവാൽ	Śvānamukhan Vavāl	LC		Sch. V	
41	Short-nosed Fruit Bat (Greater Short-nosed Fruit Bat) <i>Cynopterus sphinx</i>	(Vahl, 1797)	കുറുമുക്കൻ വാവാൽ	Kurumūkkan Vavāl	LC		Sch. V	
42	Dawn Bat (Lesser Dawn Bat) <sup>14</sup> <i>Eonycteris spelaea</i>	(Dobson, 1871)	പ്രഭാത വാവാൽ	Prabhāta Vavāl	LC		Sch. V	
43	Indian Flying Fox <i>Pteropus giganteus</i>	(Brunnich, 1782)	ഇന്ത്യൻ പഴവാവാൽ	Intyan Pajavavāl	LC		Sch. V	
44	Fulvous Fruit Bat (Leschenault's Roussette) <i>Rousettus leschenaultii</i>	(Desmarest, 1820)	മഞ്ഞപ്പുവപ്പൻ പഴവാവാൽ	Maññāchuveppan Pajavavāl	LC		Sch. V	
14. Family Emballonuridae (sheath-tailed bats)								
45	Pouch-bearing Bat (Naked-rumped Pouched Bat) <i>Saccolaimus saccolaimus</i>	(Temminck, 1838)	സഞ്ചിവാഹി ഉറവലൻവാവാൽ	Sañchivāhi Ujavālanvāval	LC			
46	Bearded Sheath-tailed Bat (Black-bearded Tomb Bat) <i>Taphozous melanopogon</i>	Temminck, 1841	കരിനാടി ഉറവലൻവാവാൽ	Karintāṭi Ujavālanvāval	LC			
47	Long-armed Sheath-tailed Bat (Long-winged Tomb Bat) <i>Taphozous longimanus</i>	Hardwicke, 1825	നീൾകൈയ്യിൻ ഉറവലൻവാവാൽ	Nīlkkaiyyan Ujavālanvāval	LC			
15. Family Megadermatidae (false-vampire bats)								
48	Greater False-vampire Bat <i>Megaderma lyra</i>	E. Geoffroy, 1810	വലിയ നരിപിൻ	Vāliya Narichir	LC			
49	Lesser False-vampire Bat <i>Megaderma spasma</i>	(Linnaeus, 1758)	ചെറിയ നരിപിൻ	Cetiya Narichir	LC			
16. Family Rhinolophidae (horseshoe bats)								
50	Lesser Woolly Horseshoe Bat (Beddome's Horseshoe Bat) <i>Rhinolophus beddomei</i>	Andersen, 1905	ചിന്ന കുതിരലാതൻവാവാൽ	Chinna Kutiralātanvāval	LC			
51	Blyth's Horseshoe Bat <i>Rhinolophus lepidus</i>	Blyth, 1844	ചെറു കുതിരലാതൻവാവാൽ	Cheru Kutiralātanvāval	LC			
52	Least Horseshoe Bat <i>Rhinolophus pusillus</i>	Temminck, 1834	കുന്നൻ കുതിരലാതൻവാവാൽ	Kunnan Kutiralātanvāval	LC			
53	Rufous Horseshoe Bat <i>Rhinolophus rouxii</i>	Temminck, 1835	ചെമ്പൻ കുതിരലാതൻവാവാൽ	Chempan Kutiralātanvāval	LC			
17. Family Hipposideridae (leaf-nosed bats)								
54	Dusky Leaf-nosed Bat <i>Hipposideros ater</i>	Templeton, 1848	ഇരുളൻ ഇലമുക്കൻവാവാൽ	Iruḷan Ilamūkkanvāval	LC			
55	Fulvous Leaf-nosed Bat <i>Hipposideros fulvus</i>	Gray, 1838	തവിടൻ ഇലമുക്കൻവാവാൽ	Taviṭan Ilamūkkanvāval	LC			
56	Schneider's Leaf-nosed Bat <i>Hipposideros spearis</i>	Schneider, 1800	ഇന്ത്യൻ ഇലമുക്കൻവാവാൽ	Intyan Ilamūkkanvāval	LC			
18. Family Molossidae (free-tailed bats)								
57	Egyptian Free-tailed Bat <i>Tadarida aegyptiaca</i>	(E. Geoffroy, 1818)	ഇറാജിപ്പപ്പൂൻ വാലൻവാവാൽ	Īrājippūyan Vālanvāval	LC			
19. Family Vespertilionidae (evening bats)								
58	Hairy-winged Bat (Lesser Hairy-winged Bat) <i>Harpiocephalus harpia</i>	Temminck, 1840	രോമച്ചിറകൻ വാവാൽ	Rōmachirakan Vāval	LC			
59	Painted Bat (Painted Woolly Bat) <i>Kerivoula picta</i>	(Pallas, 1767)	ചിത്ര വാവാൽ	Chitravāval	LC			

English name	Species name	Authority	Malayalam name	Vernacular name	IUCN	END	WPA	CITES
60	Horsfield's Mouse-eared Bat (Horsfield's Myotis)	(Temminck, 1840)	ചെവിയിൽ വലുതായ പാപിയാൽ	Cheviyan Vāval	LC			
61	Burmese Whiskered Bat (Burmese Whiskered Myotis)	(Dobson, 1874)	മീശവലുതായ പാപിയാൽ	Mīṣavāval	LC			
62	Chocolate Bat <sup>15</sup>	(Dobson, 1871)	തവിട്ടൻ അടക്കവലുതായ പാപിയാൽ	Taviṭan Aṭakkavāval	LC			
63	Kelaart's Pipistrelle	(Kelaart, 1852)	സിലോൻ അടക്കവലുതായ പാപിയാൽ	Silēṇ Aṭakkavāval	LC			
64	Least Pipistrelle	(Temminck, 1840)	കുറുതൻ അടക്കവലുതായ പാപിയാൽ	Kunnan Aṭakkavāval	LC			
65	Dormer's Bat <sup>16</sup>	(Dobson, 1875)	ദോർമറുടെ അടക്കവലുതായ പാപിയാൽ	Dēarmarṭe Aṭakkavāval	LC			
66	Greater Asiatic Yellow House Bat	(Horsfield, 1831)	മഞ്ഞവലുതായ പാപിയാൽ	Maññivāval	LC			
67	Lesser Asiatic Yellow Bat	Leach, 1821	ചെറു മഞ്ഞവലുതായ പാപിയാൽ	Cheṭu Maññivāvāl	LC			
68	Bamboo Bat	(Temminck, 1840)	മുളവലുതായ പാപിയാൽ	Mulavāval	LC			
<b>X. ORDER PHOLIDOTA</b>								
20. Family Manidae (pangolins)								
69	Indian Pangolin	E. Geoffroy, 1803	ഇന്ത്യാപാപിയാൽ	Īnāmpēcci	EN		Sch. I	App. II
<b>XI. ORDER CARNIVORA</b>								
21. Family Canidae (dogs)								
70	Bengal Fox <sup>7</sup>	(Shaw, 1800)	കുറുക്കൻ	Kurukkan	LC		Sch. II	App. III
71	Golden Jackal	Linnaeus, 1758	കുറുനീക്കൻ, ഊളൻ	Kurunarī, Ūlan	LC		Sch. II	App. III
72	Indian Wild Dog (Dhole)	(Pallas, 1811)	ചെമ്മന്തയ, കാട്ടുമന്തയ	Chemnāya, Kāṭṭunāya	EN		Sch. II	App. II
22. Family Ursidae (bears)								
73	Sloth Bear	(Shaw, 1791)	കരടി	Karaṭi	VU		Sch. I	App. I
23. Family Mustelidae (otters and martens)								
74	Nilgiri Marten	Horsfield, 1851	മരന്തയ	Maranāya	VU	WG	Sch. II	App. III
75	Asian Small-clawed Otter (Clawless Otter)	Illiger, 1815	മല നീർത്തയ	Mala Nīrnāya	VU		Sch. I	App. II
76	Smooth-coated Otter (Indian Smooth-coated Otter)	(I. Geoffroy Saint-Hilaire, 1826)	നീർത്തയ	Nīrnāya	VU		Sch. II	App. II
24. Family Viverridae (civets and palm civets)								
77	Small Indian Civet	(E. Geoffroy Saint-Hilaire, 1818)	പുവുക	Pūveruk	LC		Sch. II	App. III
78	Common Palm Civet (Toddy Cat)	(Pallas, 1777)	മാപ്പട്ടി	Marappaṭṭi	LC		Sch. II	App. III
79	Brown Palm Civet (Jerdon's Palm Civet)	Bianford, 1885	തവിട്ടൻ പെറ്റുക	Taviṭan Veruk	LC	WG	Sch. II	App. III
25. Family Herpestidae (mongooses)								
80	Brown Mongoose <sup>4</sup>	Gray, 1837	തവിട്ടൻ കരി	Taviṭan Kiri	LC		Sch. II	
81	Indian Grey Mongoose	(E. Geoffroy Saint-Hilaire, 1818)	നാടൻ കരി	Nāṭan Kiri	LC		Sch. II	App. III

English name	Species name	Authority	Malayalam name	Vernacular name	IUCN	END	WPA	CITES
82 Ruddy Mongoose <sup>17</sup>	<i>Herpestes smithii</i>	Gray, 1837	ചുണ്ടാൻ കീന	Chundayan Kiri	LC		Sch. II	App. III
83 Stripe-necked Mongoose <sup>4</sup>	<i>Herpestes vitticollis</i>	Bennett, 1835	ചെങ്കീന	Chenkiri	LC		Sch. II	App. III
26. Family Felidae (cats)								
84 Jungle Cat	<i>Felis chaus</i>	Schreber, 1777	കട്ടുപുച്ച	Kāṭṭupūcha	LC		Sch. II	App. II
85 Leopard Cat	<i>Prionailurus bengalensis</i>	Kerr, 1792	പുലിപുച്ച	Pulipūcha	LC		Sch. I	App. I
86 Rusty-spotted Cat <sup>17</sup>	<i>Prionailurus rubiginosus</i>	(L. Geoffroy Saint-Hilaire, 1831)	തൂറ്റുമുൻപുച്ച	Turumpan Pūcha	VU		Sch. I	App. I
87 Leopard	<i>Panthera pardus</i>	(Linnaeus, 1758)	പുള്ളിപ്പുലി	Pullippuli	NT		Sch. I	App. I
88 Tiger	<i>Panthera tigris</i>	(Linnaeus, 1758)	കടുവ	Katuva	EN		Sch. I	App. I
<b>XII. ORDER ARTIODACTYLA</b>								
27. Family Suidae (pigs)								
89 Wild Boar (Wild Pig)	<i>Sus scrofa</i>	Linnaeus, 1758	കട്ടുപന്നി	Kāṭṭupanni	LC		Sch. III	
28. Family Tragulidae (mouse deer)								
90 Indian Chevrotain (Mouse Deer) <sup>18</sup>	<i>Moschiola indica</i>	Gray, 1852	കുന്താൻ, കുന്തർപന്നി	Kūramān, Kūranpanni	LC		Sch. I	
29. Family Cervidae (deer)								
91 Spotted Deer (Chital)	<i>Axis axis</i>	(Erxleben, 1777)	പുള്ളിമാൻ	Pullimān	LC		Sch. III	
92 Barking Deer (Indian Muntjac) <sup>19</sup>	<i>Muntiacus muntjak</i>	(Zimmermann, 1780)	കേശാൻ, കേശയാട്	Kēlamān, Kēlayāt	LC		Sch. III	
93 Sambar Deer	<i>Rusa unicolor</i>	(Kerr, 1792)	കലമാൻ, മൂവ്	Kalamān, Mlāv	VU		Sch. III	
30. Family Bovidae (cattle)								
94 Gaur (Indian Gaur)	<i>Bos gaurus</i>	Smith, 1827	കാട്ടുപൊത്തി	Kāṭṭupēatt	VU		Sch. I	App. I
95 Four-horned Antelope (Chousingha)	<i>Tetracerus quadricornis</i>	(de Blainville, 1816)	ഉല്ലമാൻ	Ullamān	VU		Sch. I	
96 Nilgiri Tahr <sup>20</sup>	<i>Nilgiritragus hylocrius</i>	(Ogilby, 1838)	വരയാട്	Varayāt	EN	WG	Sch. I	
<b>XIII. ORDER CETACEA</b>								
31. Family Delphinidae (marine dolphins)								
97 Common Dolphin (Short-beaked Common Dolphin)	<i>Delphinus delphis</i>	Linnaeus, 1758	കടൻപന്നി, കടലടി	Katalpanni, Katalēṭi	LC		Sch. II	App. II
98 Grey Dolphin (Risso's Dolphin)	<i>Grampus griseus</i>	(G. Cuvier, 1812)	ചാര സാൾഫിൻ	Chāra Dēāphin	LC		Sch. II	App. II
99 Short-finned Pilot Whale (Pacific Pilot Whale)	<i>Globicephala macrorhynchus</i>	Gray, 1846	കുന്നപ്പാറകൻ സാൾഫിൻ	Kunnichirakan Dēāphin	DD		Sch. II	App. II
100 Pygmy Killer Whale (Slender Blackfish)	<i>Feresa attenuata</i>	Gray, 1875	കുന്നൻ കരയടുക്കിത്തലം	Kunnan Keālayāṭṭimigalām	DD		Sch. II	App. II
101 Fraser's Dolphin (Sarawak Dolphin)	<i>Lagenodelphis hosei</i>	Fraser, 1957	ശാരംസത്യുടെ സാൾഫിൻ	Phrāsēruṭe Dēāphin	LC		Sch. II	App. II
102 Melon-headed Dolphin (Indian Broad-beaked Dolphin)	<i>Peponocephala electra</i>	(Gray, 1846)	തലയാൻ തിമംസലം	Talayan Timingalām	LC		Sch. II	App. II
103 False Killer Whale	<i>Pseudorca crassidens</i>	(Owen, 1846)	കപ്പാ കൊലയാളിത്തലം	Kapata Keālayāṭṭimigalām	DD		Sch. II	App. II
104 Rough-toothed Dolphin	<i>Steno bredanensis</i>	(G. Cuvier in Lesson, 1828)	പരുക്കൻപുളൻ	Parukkan Pallan	LC		Sch. II	App. II



English name	Species name	Authority	Malayalam name	Vernacular name	IUCN	END	WPA	CITES
105 Indo-Pacific humpback Dolphin (Plumbeous Dolphin)	<i>Sousa chinensis</i>	(Osbeck, 1765)	പുനനേടി	Punnanēṭi	NT		Sch. II	App. II
106 Striped Dolphin	<i>Stenella coeruleoalba</i>	(Meyen, 1833)	വായൻ	Varayan	LC		Sch. II	App. II
107 Pantropical Spotted Dolphin (Bridled Dolphin)	<i>Stenella attenuata</i>	(Gray, 1846)	പുല്ലി ഡോൾഫിൻ	Pullji Dēāṭṭhin	LC		Sch. II	App. II
108 Spinner Dolphin	<i>Stenella longirostris</i>	(Gray, 1828)	മേലിയനേടി	Meliyanēṭi	DD		Sch. II	App. II
109 Bottle-nosed Dolphin	<i>Tursiops truncatus</i>	(Montagu, 1821)	കുപ്പിമുക്കൻ ഡോൾഫിൻ	Kuppiṁṁūkkān Dēāṭṭhin	LC		Sch. II	App. II
32. Family Phocoenidae (porpoises)								
110 Finless Porpoise (Indo-Pacific Finless Porpoise)	<i>Neophocaena phocaenoides</i>	(G. Cuvier, 1829)	എലിയനേടി	Eliyanēṭi	VU		Sch. I	App. II
33. Family Physeteridae (sperm whales)								
111 Pygmy Sperm Whale	<i>Kogia breviceps</i>	(Blainville, 1838)	കുന്ദൻ എണ്ണതീമംഗലം	Kunnan Enṇatimāṅgalam	DD		Sch. II	App. II
112 Sperm Whale	<i>Physeter catodon</i>	Linnaeus, 1758	എണ്ണതീമംഗലം	Enṇa Timāṅgalam	VU		Sch. II	App. II
34. Family Ziphiidae (beaked whales)								
113 Ginkgo-toothed Whale (Ginkgo-toothed Beaked Whale)	<i>Mesoplodon ginkgodens</i>	Nishiwaki and Kamiya, 1958	ജിങ്കോ തീമംഗലം	Jinkēā Timāṅgalam	DD		Sch. II	App. II
35. Family Balaenopteridae (rorquals)								
114 Minke Whale (Lesser Rorqual)	<i>Balaenoptera acutorostrata</i>	Lacepede, 1804	ചെറു തീമംഗലം	Cheṛu Timāṅgalam	LC		Sch. II	App. I
115 Bryde's Whale (Tropical Whale)	<i>Balaenoptera edeni</i>	Anderson, 1879	ബ്രൈന്റേ തീമംഗലം	Braidaṅṅe Timāṅgalam	DD		Sch. II	App. I
116 Blue Whale	<i>Balaenoptera musculus</i>	(Linnaeus, 1758)	നീല തീമംഗലം	Nīla Timāṅgalam	EN		Sch. II	App. I
117 Fin Whale (Common Rorqual)	<i>Balaenoptera physalus</i>	(Linnaeus, 1758)	ചിറകൻ തീമംഗലം	Chirakan Timāṅgalam	EN		Sch. II	App. I
118 Humpback Whale	<i>Megaptera novaeangliae</i>	(Borowski, 1781)	കുന്ദൻ തീമംഗലം	Kūnan Timāṅgalam	LC		Sch. II	App. I

1 Endemic to peninsular India  
 2 Formerly placed under *L. tardigradus*, but has since been split into two and *L. tardigradus* is now endemic to Sri Lanka (Groves 2000, 2005; Nekaris 2013).  
*L. lydekkerianus* is endemic to southern India and Sri Lanka  
 3 Formerly placed under the genus *Trachyphethecus*, but later changed to *Semnopithecus* (Karanth et al. 2008; Nag et al. 2011; Zinner et al. 2013)  
 4 Endemic to Western Ghats and Sri Lanka  
 5 Endemic to southern India and Sri Lanka  
 6 *F. sublineatus* is split into *F. sublineatus* and *F. obscurus*, the former endemic to Western Ghats and the latter endemic to Sri Lanka (Dissanayake & Oshida 2012)  
 7 Formerly placed under the genus *Cremnomys*, later moved to *Madromys* Musser & Carleton (2005)  
 8 Originally a Palearctic species and is introduced in India  
 9 Native to southeastern Siberia, northeastern China and parts of Japan. introduced species in India  
 10 Known only from few specimens collected from the rice fields of Thrissur, Alleppey and Thiruvananthapuram (Agarwal 2000; Musser & Carleton 2005)  
 11 Formerly *V. oleracea* later split into *V. oleracea* and *V. nilagirica* (Corbet & Hill 1992, Musser & Carleton 2005)  
 12 Formerly *Hemichinus nudiventris* (Corbet & Hill 1992), but later moved to the genus *Paracehinus* (Frost et al. 1991; Hutterer 1993, 2005). Endemic to southern India  
 13 Formerly *S. montanus* Hutterer (2005), but later split to *S. niger* and *S. montanus*, former endemic to Western Ghats while the latter is endemic to Sri Lanka (Meegaskumbura & Schneider 2008)  
 14 Nameer et al. (in press.)  
 15 Formerly placed under the genus *Pipistrellus*, later moved to *Falsistrellus* (Simmons 2005)  
 16 Formerly placed under the genus *Pipistrellus*, later moved to *Scotozous* (Simmons 2005)  
 17 Endemic to peninsular India and Sri Lanka  
 18 Formerly *Tragulus memina*, until split and moved to the genus *Moschiola* (Groves & Meejaard 2005). Endemic to India.  
 19 Formerly placed under the genus *Cervus*, later moved to *Rusa* (Grubb 2005)  
 20 Formerly placed under the genus *Hemitragus*, later moved to *Niigiritragus* (Ropiquet & Hassanin 2005)



© Praveen Mohandas



< ENDANGERED >  
EN

Image 1. Asain Elephant *Elephas maximus*

© Praveen Mohandas



< ENDANGERED >  
EN

Image 2. Lion-tailed Macaque *Macaca silenus*

© Praveen Mohandas



< VULNERABLE >  
VU

Image 3. Nilgiri Langur *Trachypithecus johnii*

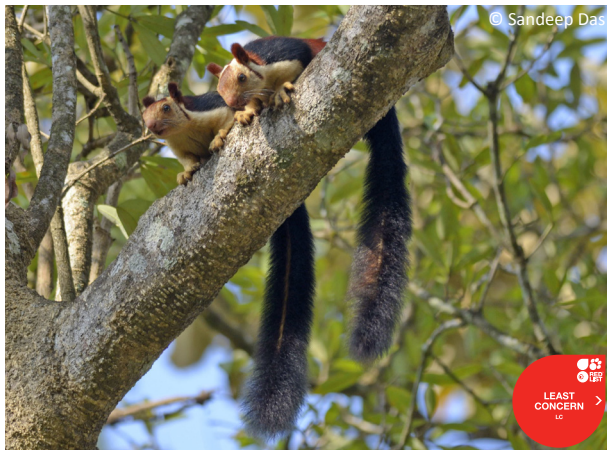
© Praveen Mohandas



< NEAR THREATENED >  
NT

Image 4. Grey Langur *Semnopithecus priam*

© Sandeep Das



< LEAST CONCERN >  
LC

Image 5. Malabar Giant Squirrel *Ratufa indica*

© Praveen Mohandas



< NEAR THREATENED >  
NT

Image 6. Grizzled-giant Squirrel *Ratufa macroura*





Image 7. Nilgiri Long-tailed Tree Mouse *Vandeleuria nilagirica*



Image 8. Greater-shortnosed Fruit Bat *Cynopterus sphinx*



Image 9. Dusky Leaf-nosed Bat *Hipposideros ater*



Image 11. Fulvus Leaf-nosed Bat *Hipposideros fulvus*



Image 10. Greater Asiatic Yellow House Bat *Scotophilus heathii*





Image 12. Blyth's Horseshoe Bat *Rhinolophus lepidus*



Image 13. Rufous Horseshoe Bat *Rhinolophus rouxii*



Image 14. Indian Pangolin *Manis crassicaudata*



Image 15. Sloth Bear *Melursus ursinus*



Image 16. Brown Mongoose *Herpestes fuscus*



Image 18. Tiger *Panthera tigris*





Image 17. Nilgiri Tahr *Nilgiritragus hylocrius*

- © Praveen Mohandas
- Karant, P.K., L. Singh, R. Collura & C.B. Stewart (2008).** Molecular phylogeny and biogeography of langurs and leaf monkeys of south Asia (Primates: Colobinae). *Molecular Phylogenetics and Evolution* 46: 683–694.
- Kurup, G.U. (1987).** The rediscovery of the Malabar Civet, *Viverra megaspilla civettina* Blyth in India. *Cheetal* 28(2): 1–4.
- Kurup, G.U. (1989).** The rediscovery of Malabar Civet (*Viverra megaspilla civettina* Blyth) in India. *Tiger Paper* 1989: 13–14.
- Lindsay, H.M. (1926).** Bombay Natural History Society's Mammal Survey of India: Report 38, 40, 41, 42, 43, 44, & 45. *Journal of the Bombay Natural History Society* 31(1): 40–48, 31(2): 379–382, 31(2): 383–403, 31(2): 403–407, 31(3): 591–597, 31(3): 597–606, & 31(3): 606–612.
- Meegaskumbura, S. & C.J. Schneider (2008).** A taxonomic evaluation of the Shrew *Suncus montanus* (Soricidae: Crocidurinae) of Sri Lanka and India. *Ceylon Journal of Science (Biological Sciences)* 37 (2): 129–136.
- Menon, V. (2008).** *Indiayile Sasthanikal - Oru Field Guide*. (Indian Mammals - A Field Guide). DC Books, 321pp.
- Menon, V. (2003).** *A Field Guide to Indian Mammals*. Dorling Kindersley (India) Pvt. Limited, 201pp.
- Menon, V. (2014).** *Indian Mammals - A Field Guide*. Hachette Book Publishing Indian Pvt. Ltd., 528pp.
- Musser, G.G. & M.D. Carleton (2005).** Rodentia: Myomorpha: Muroidea: Murinae, pp. 1189–1531. In: Wilson, D.E. & D.M. Reeder (eds.). *Mammal Species of the World: A Taxonomic and Geographic Reference, 3rd Edition, Vol. 1 & 2*. The Johns Hopkins University Press, Baltimore, 2142pp.
- Nag, C.K.S., P. Pramod & P.K. Karant (2011).** Taxonomic Implications of a field study of morpho types of Hanuman Langurs (*Semnopithecus entellus*) in peninsular India. *International Journal of Primatology*; <http://dx.doi.org/10.1007/s10764-011-9504-0>
- Nameer, P.O. (2000).** *Checklist of Indian Mammals*. Kerala State Forest Department and Kerala Agricultural University, 90pp+xxv.
- Nameer, P.O., S. Molur & S. Walker (2001).** Mammals of Western Ghats: a simplistic overview. *Zoos' Print Journal* 16(11): 629–639; <http://dx.doi.org/10.11609/JoTT.ZPJ.16.11.629-39>
- Nandini, R. & D. Mudappa (2010).** Mystery or myth: a review of history and conservation status of the Malabar Civet *Viverra civettina* Blyth, 1862. *Small Carnivore Conservation* 43: 47–59.
- Pocock, R.I. (1939).** *The Fauna of British India including Ceylon and Burma. (Vol. 1, Primates and Carnivora, in part)*. Taylor and Francis Red Lion Court Fleet Street, London, 463pp.
- Pocock, R.I. (1941).** *The Fauna of British India including Ceylon and Burma. (Vol. 2, Carnivora, in part)*. Taylor and Francis Red Lion Court Fleet Street, London, 503pp.
- Prater, S.H. (1971).** *The Book of Indian Animals*. 3rd Edition. 12th reprint 2005. Bombay Natural History Society, Bombay, 324pp.
- Ropiquet, A. & A. Hassanin (2005).** Molecular evidence for the polyphyly of the genus *Hemitragus* (Mammalia, Bovidae). *Molecular Phylogenetics and Evolution* 36: 154–168.
- Ryley, K.V. (1913–1914).** Bombay Natural History Society's Mammal Survey of India: Report 9, 10, 11, 12, 13 & 14. *Journal of the Bombay Natural History Society* 22(2): 283–295, 22(3): 464–486, 22(3): 486–513, 22(4): 684–699, 22(4): 700–710, & 22(4): 710–725.
- Sadasivan, V. (1987).** *Keralathile Vanyajeevikal - Sasthanikal*. (Wildlife of Kerala - Mammals). Kerala State Institute of Language, Kerala, 81p.
- Sathasivam, K. (1996).** A checklist of the mammals of Tamil Nadu and Kerala. *Blackbuck* 12(3): 60–70.
- Simmons, N.B. (2005).** Chiroptera, pp. 312–529. In: Wilson, D.E. & D.M. Reeder (eds.). *Mammal Species of the World: A Taxonomic and Geographic Reference, 3rd Edition, Vol. 1 & 2*. The Johns Hopkins University Press, Baltimore, 2142pp.
- Sterndale, R.A. (1884).** *Natural History of the Mammals of India and Ceylon*. Thacker, Spink and Co. Calcutta, 540pp.
- Thomas, O. (1914–1924).** Scientific Results from Mammal Survey Part VII, VIII, IX, X, XVI, XIX, XXI, XXII, XXIII, XXIV, XXV, XXVII, XXX, XXXI, XXXV, XXXVI, & XXXVIII. *Journal of the Bombay Natural History Society* 23(1): 23–31, 23(2): 197–205, 23(3): 413–416, 23(4): 607–613, 25(2): 119–206, 26(4): 933–940, 27(1): 33–39, 27(2): 248, 27(2): 249, 27(3): 596–598, 27(4): 772, 28(1): 26–27, 28(2): 428–432, 28(4): 1067–1068, & 29(1): 84.
- Wilson, D.E. & D.M. Reeder (eds.) (2005).** *Mammal Species of the World: A Taxonomic and Geographic Reference, 3rd Edition, Vol. 1 & 2*. The Johns Hopkins University Press, Baltimore, i-xxxv+1–743pp & pp.i-xvii+745–2142.
- Wilson, D.E. & R.A. Mittermeier (eds.) (2009).** *Handbook of Mammals of the World - Vol. I. Carnivores*. Lynx Edicions. Barcelona, 727pp.
- Wroughton, R.C. (1912–21).** Bombay Natural History Society's Mammal Survey of India: Report 1, 2, 3, 4, 5, 17, 18, 19, 21, 22, 23, 24, 25, 26, 27, 28, 32, 33, 34 & 35. *Journal of the Bombay Natural History Society* 21(2): 392–410, 21(3): 820–825, 21(3): 826–844, 21(3): 844–851, 21(4): 1170–1195, 23(4): 695–720, 24(1): 79–96, 24(1): 96–110, 24(2): 309–310, 24(2): 311–316, 24(3): 468–493, 24(4): 749–758, 24(4): 758–773, 24(4): 773–782, 25(1): 63–71, 25(2): 274–278, 27(2): 314–322, 27(3): 545–549, 27(3): 549–553, & 27(3): 553–554.
- Wroughton, R.C. (1918–21).** Summary of the results from the Indian mammal survey of Bombay Natural History Society, Part I, II, III, VI, VII, & Appendix. *Journal of the Bombay Natural History Society* 25(4): 547–598, 26(1): 19–58, 26(2): 338–378, 27(1): 57–85, 27(2): 301–313, & 27(3): 520–534.
- Wroughton, R.C. & K.V. Ryley (1913).** Bombay Natural History Society's Mammal Survey of India: Report 6, 7 & 8. *Journal of the Bombay Natural History Society* 22(1): 29–44, 22(1): 45–47 & 22(1): 58–66.